

# Businesses in Scotland 2016



A National Statistics publication for Scotland

BUSINESS AND ENERGY

# Contents

<b>Contents .....</b>	<b>1</b>
<b>Introduction.....</b>	<b>2</b>
<b>Key Facts 2016.....</b>	<b>4</b>
<b>Scotland Tables .....</b>	<b>12</b>
<b>Methodology .....</b>	<b>15</b>
<b>Contact Details .....</b>	<b>32</b>
<b>Links to area within the Scottish Government .....</b>	<b>33</b>
<b>Links to websites outside the Scottish Government.....</b>	<b>34</b>
<b>Scotland Tables – Time Series.....</b>	<b>36</b>
<b>Scotland Tables – All Enterprises.....</b>	<b>38</b>
<b>Scotland Tables – Registered Enterprises.....</b>	<b>43</b>
<b>Local Authority Tables .....</b>	<b>48</b>
<b>Urban and Rural Tables .....</b>	<b>56</b>
<b>Foreign-Owned Enterprises .....</b>	<b>62</b>

# Introduction

## What do these statistics cover?

The 'Businesses in Scotland' publication provides information on the number of enterprises (businesses) operating in Scotland. The main purpose of the publication is to provide an estimate of Scotland's business stock.

Within the publication the Scottish business stock is broken down by various dimensions including industry, business size, local authority area, urban/rural area and country of ownership. The publication includes **all** enterprises that **operate** in Scotland regardless of where the business is based.

The focus of the publication is on private sector enterprises, where the private sector is defined as including the following enterprise types:

- Companies (including Building Societies)
- Sole Proprietors
- Partnerships
- Public Corporations/Nationalised Bodies
- Non-profit making bodies and mutual associations

Data is also provided on enterprises' employment and turnover. However, please note that there are time lags associated with the employment and turnover variables.

## What are the statistics used for?

Statistics from the 'Businesses in Scotland' publication are used to provide insight into the characteristics of Scotland's business stock, and how Scotland's business stock has changed over time. The data are used to inform decision making and performance monitoring – both inside and outside government. More information on uses can be found in the on-line [Businesses in Scotland Data Sources, Suitability and Uses Note](#).

## What year do tables relate to?

The latest figures relate to March 2016 and were released on 8 November 2016.

The latest 2016 publication tables on the [Businesses in Scotland](#) website are consistent for the years 2010 to 2016. All industry sector data are based on the Standard Industrial Classification (SIC) 2007.

Older tables, available in the [Tables Archive](#), have not been updated to reflect the current methodology and are therefore not consistent with the latest tables. However, a high level time series for total (registered and unregistered) enterprises

and registered enterprises has been constructed for 2000 to 2016. This long time series has been produced on a consistent basis as far as possible.

The following data is available on the 'Businesses in Scotland' website:

Constructed Time Series back to 2000:

All enterprises (registered and unregistered)	2000 – 2016
Total registered enterprises	2000 – 2016

Latest detailed tables on a consistent methodological basis:

All enterprises (Tables A to E)	2010 – 2016
Registered enterprises by industry (Tables 1 to 14)	2010 – 2016

Archived Tables (on old methodology and SIC 2003 basis):

All enterprises (Tables A to E)	2000 – 2016
Registered enterprises by industry (Tables 1 to 8)	2000 – 2016

### **What's new?**

Table 12 is new and provides an urban/rural breakdown of public sector enterprises and public sector employment by industry sector.

Table 13 is new and provides a breakdown of business sites by urban/rural area and local authority area.

Table 14 is new and provides more detailed information on abroad-owned businesses operating in Scotland - with a breakdown of enterprises, sites, employment and turnover by country of ownership.

### **When will the figures be updated?**

It is the aim to publish the Businesses in Scotland 2017 as soon as possible after the release of the Office for National Statistics UK Business Activity and the Department for Business, Energy and Industrial Strategy Business Population Estimates for the UK and Regions publications, which are due out in Autumn 2017.

# Key Facts 2016

## Summary

- As at March 2016, there were an estimated 350,410 private sector enterprises operating in Scotland.
- Between March 2015 and March 2016, the estimated number of enterprises decreased by 3.0% (10,935 enterprises).
  - The decrease over the latest year is driven by a fall in the number of unregistered businesses (the smallest sole traders and partnerships that are not registered for VAT/PAYE) – unregistered businesses fell by 14,590 (-7.6%).
  - The number of VAT/PAYE registered businesses has increased - up by 3,660 (+2.1%) from 170,335 in 2015 to 173,995 in 2016 – the highest figure since the time series began (in 2000).
  - As at March 2016, there were 348,045 Small and Medium-sized Enterprises (SMEs) operating in Scotland, providing an estimated 1.2 million jobs. SMEs accounted for 99.3% of all private sector enterprises and accounted for 54.6% of private sector employment and 40.5% of private sector turnover.

## Scottish Economy – Gross Domestic Product (GDP) Trends - 1998 to 2016

[Scottish Gross Domestic Product \(GDP\)](#) in constant basic prices grew each year from 1998 reaching a peak in Q2 of 2008. Scotland then entered recession, which lasted six quarters, and returned to growth in Q1 of 2010. Further short periods of economic contraction occurred in Q4 2010 and Q1 2012. Between Q3 2012 and Q1 2015 there was sustained quarter-on-quarter growth, taking output 4.7% above the pre-recession peak. The most recent quarterly GDP figures show that the output of the Scottish economy remained flat during the second quarter of 2015; this was followed by growth in the second half of 2015. There was a slight contraction in Q1 2016, but the economy picked up in the second quarter of 2016, with GDP growing 0.4%.

## Businesses in Scotland as at March 2016

As at March 2016, there were an estimated 350,410 private sector enterprises operating in Scotland. Almost all of these enterprises (98.2%) were small (0 to 49 employees); 3,920 (1.1%) were medium-sized (50 to 249 employees) and 2,365 (0.7%) were large (250 or more employees).

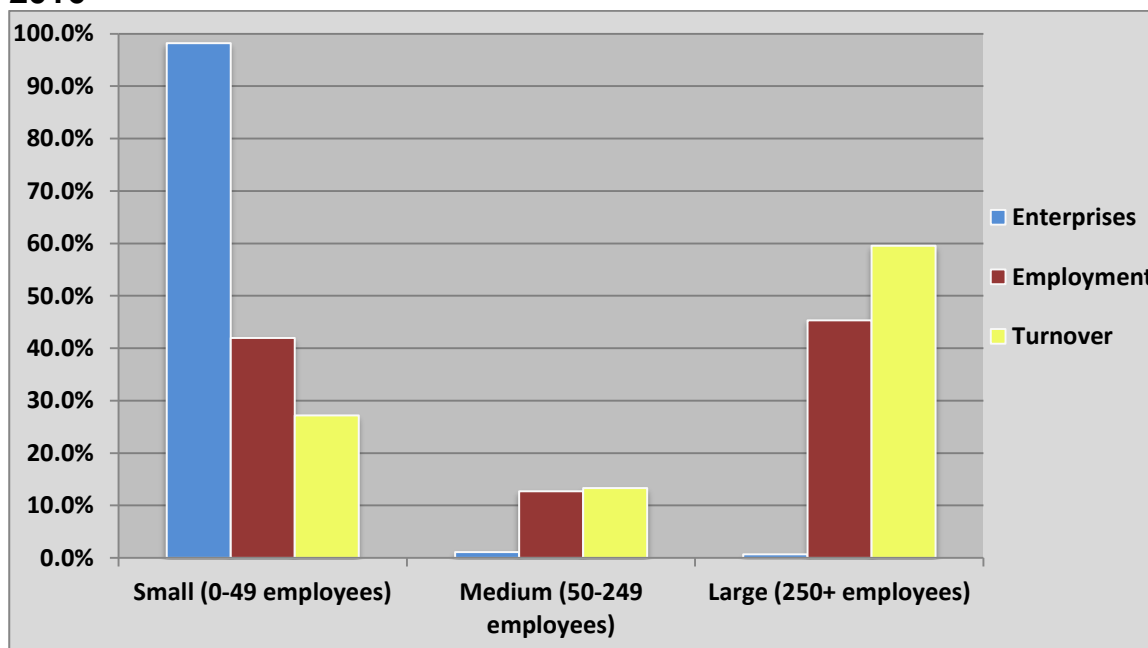
As at March 2016, there were 348,045 Small and Medium-sized Enterprises (SMEs) operating in Scotland, providing an estimated 1.2 million jobs. SMEs

accounted for 99.3% of all private sector enterprises, accounting for 54.6% of private sector employment and 40.5% of private sector turnover.

Small (0 to 49 employees) enterprises alone accounted for 42.0% of private sector employment and 27.2% of private sector turnover as at March 2016 (see Chart 1).

The 2,365 large (250+ employees) enterprises operating in Scotland, as at March 2016, accounted for 45.4% of private sector employment and 59.5% of private sector turnover (see Chart 1).

**Chart 1: Share of enterprises, employment and turnover by size of enterprise, 2016**



As at March 2016, enterprises with no employees – that is sole proprietors/partnerships comprising only the owner-managers or companies comprising only the employee director – accounted for 69.4% of all private sector enterprises in Scotland, 12.8% of private sector employment and 4.7% of private sector turnover.

The total number of enterprises operating in Scotland comprises those that are registered for VAT and/or PAYE, and those that are not (so called unregistered enterprises). Unregistered enterprises are sole proprietorships and partnerships that are not large enough to be VAT registered (have an annual turnover below the VAT threshold - £82,000 as at March 2016) and are not PAYE registered (i.e. do not employ others). As at March 2016, unregistered enterprises represented 50.3% of all private sector enterprises in Scotland.

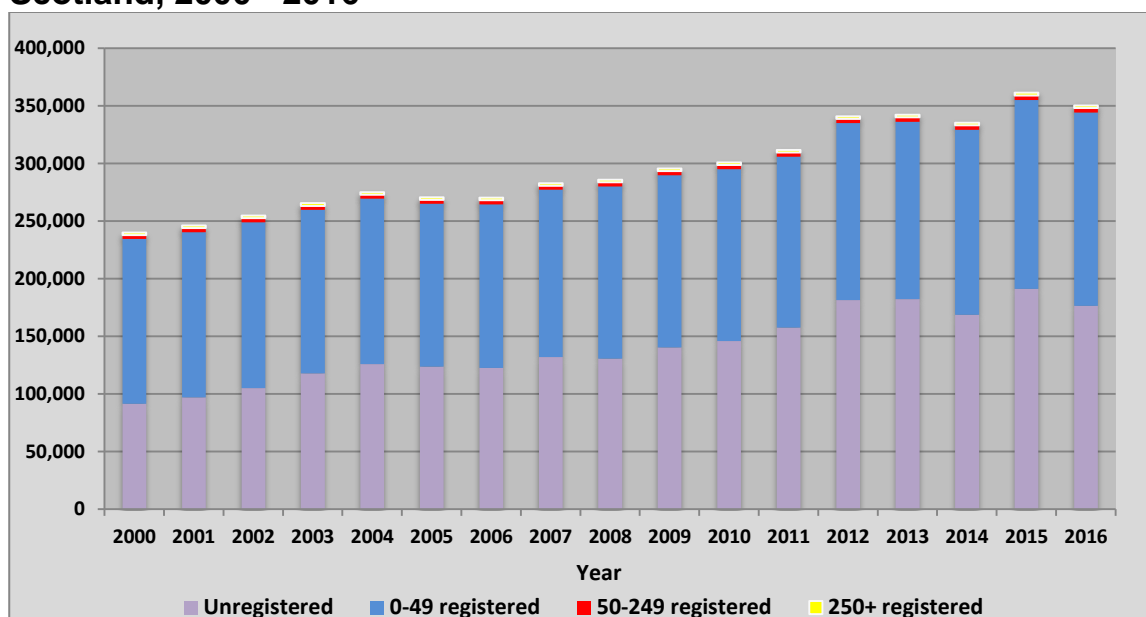
### **Changes in the Scottish business stock over time**

As at March 2016, there were an estimated 350,410 private sector enterprises operating in Scotland – a fall from 2015 but the 2016 business count is still

relatively high (with it being the second highest stock figure in the series back to 2000).

Between 2000 and 2016, the total number of private sector enterprises has increased by an estimated 46.0% (+110,440 enterprises). As shown in Chart 2 below this increase has been driven by a rise in the smallest unregistered enterprises – the number of unregistered enterprises in Scotland has increased by 93.2% since 2000 (up from 91,305 in 2000 to 176,420 in 2016). However, the number of registered enterprises has increased also – from 148,665 in 2000 to 173,995 in 2016 (an increase of 17.0%) - driven by a rise in the number of small (0 to 49 employees) registered enterprises.

**Chart 2: Estimated number of private sector enterprises operating in Scotland, 2000 - 2016**



Between 2015 and 2016, the total number of private sector businesses in Scotland dropped by 10,935 businesses (-3.0%). This follows an increase in the previous annual period.

The decrease over the latest year was driven by a fall in the number of unregistered businesses. The number of unregistered businesses decreased from 191,010 in 2015 to 176,420 in 2016 – a decrease of 14,590 businesses (-7.6%).

The number of registered businesses (those registered for VAT and/or PAYE) increased over the latest year - from 170,335 businesses in 2015 to 173,995 business in 2016, a rise of 3,660 registered businesses (+2.1%). With five years of sustained annual growth, this takes the number of registered businesses to a new series high.

This rise in registered enterprises over the latest year was driven by an increase in the number of small (0 to 49 employees) enterprises – up 2.2% (+3,540 enterprises) between 2015 and 2016. Looking within the group of small registered enterprises, the number of registered enterprises without employees grew by 6.0%

from 63,035 in 2015 to 66,825 in 2016 but the number of registered small employers (1-49 employees) decreased by 0.2% from 101,135 in 2015 to 100,885 in 2016.

The number of medium-sized (50 to 249 employees) enterprises increased between 2015 and 2016 to 3,920 enterprises – representing an increase of 50 enterprises. There has been an increase of 570 medium-sized enterprises since 2000 and the 2016 estimate is now higher than at any time since then.

The number of large (250 or more employees) enterprises also increased, over the latest year, to 2,365 – an increase of 70 since 2015. There has been an increase of 120 large-sized enterprises since 2000 and the 2016 estimate is now higher than at any time since then.

Following the recession there was a slight shift in employment from large businesses (250+ employees) to small businesses – with large businesses accounting for 47.1% of private sector employment in 2010 compared to 44.4% in 2015. However, these latest figures for 2016 show that the large business share of private sector employment has increased over the last year to 45.4%.

The number of employers decreased slightly, between 2015 and 2016, to 107,170 – representing a decrease of 130 employers (-0.1%).

### **Enterprises by legal status**

As at March 2016, private sector enterprises in Scotland, as per the ‘Businesses in Scotland’ definition, fell into the following categories:

- Sole Proprietors/Partnerships<sup>1</sup> (66.9% of enterprises, 20.1% of employment)
- Companies<sup>2</sup> (30.9% of enterprises, 71.5% of employment)
- Non-Profit Making Bodies (2.2% of enterprises, 8.4% of employment)

Although Sole Proprietors/Partnerships continue to make up the majority of private sector enterprises; there has been sustained high growth in the number of Companies over the last six years. The number of Companies has increased from 77,060 in 2010 to 108,150 in 2016 – an increase of 31,090 (+40.3%).

### **Enterprises by broad industry sector**

As at March 2016, the two largest industry sectors were ‘Professional, Scientific & Technical Activities’ (53,240 enterprises) and Construction (43,250 enterprises). Together, these two sectors make up 28% of all private sector enterprises in Scotland.

---

<sup>1</sup> Note that the Sole Proprietorships/Partnerships legal status group includes unregistered enterprises.

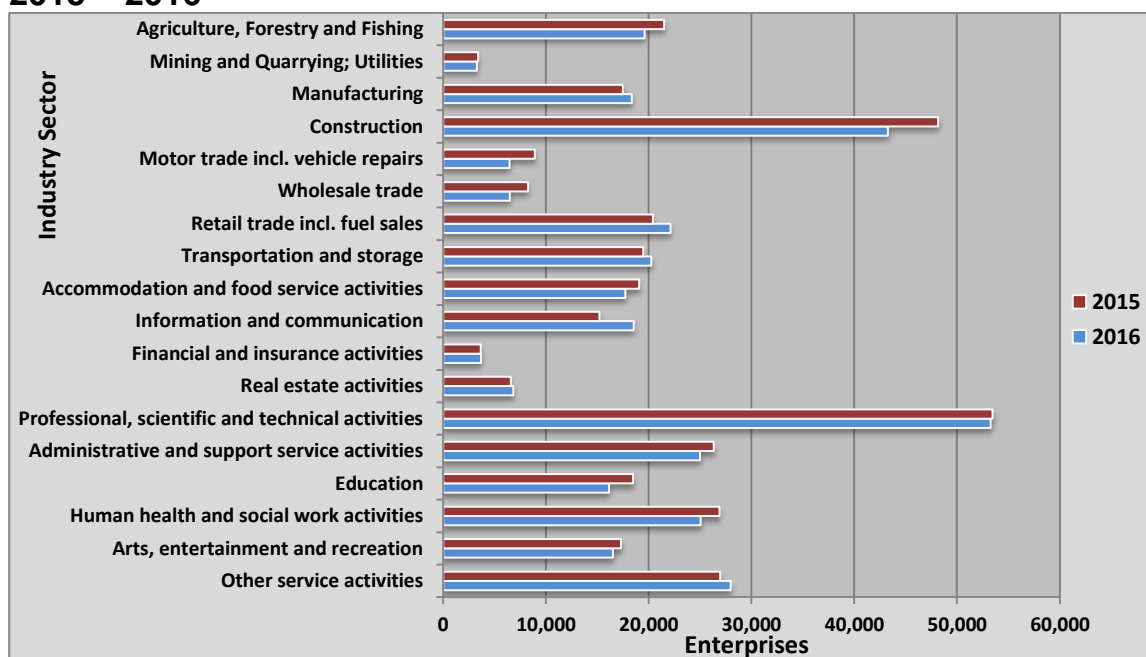
<sup>2</sup> Includes a small number of public corporations.



Between 2015 and 2016, the number of enterprises in the 'Professional, Scientific & Technical Activities' sector decreased by 210 enterprises. The number of enterprises in the Construction sector decreased by 4,885 enterprises (-10.1%) – this was driven by a fall in the number of unregistered construction sector enterprises, as the number of registered enterprises in the construction sector increased by 615 over the same period.

The number of enterprises within the broad industry groups in March 2015 and March 2016 can be seen in Chart 3:

**Chart 3: Number of private sector enterprises, Scotland, by industry sector, 2015 – 2016**



### Ownership (registered enterprises only)

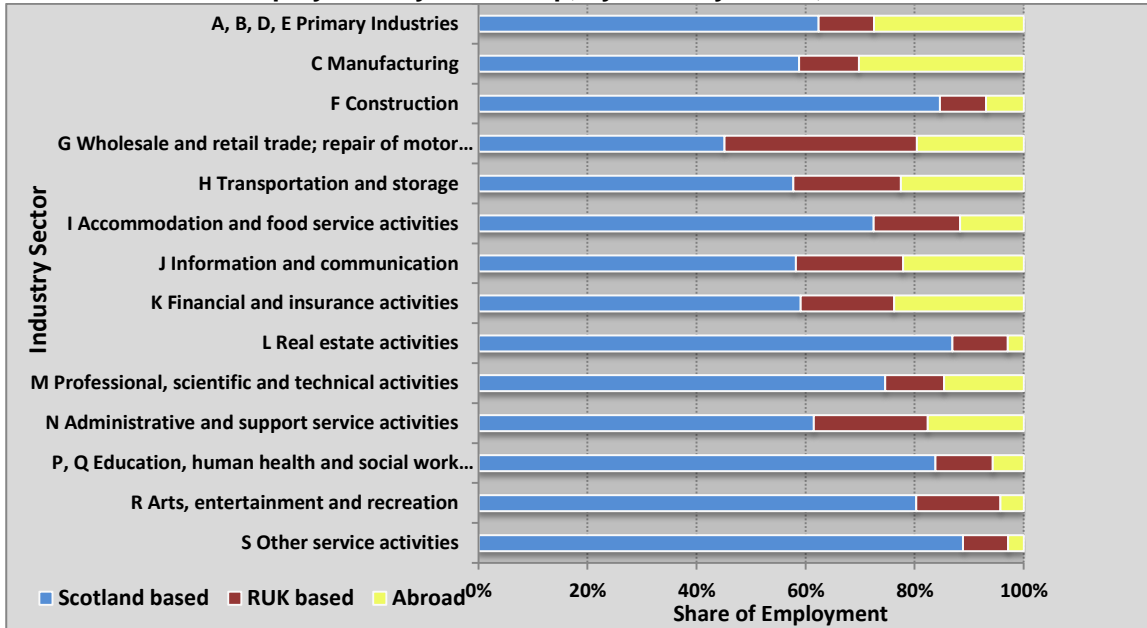
Information on the ownership of enterprises operating in Scotland is only available for enterprises registered for VAT and/or PAYE. Within the 'Businesses in Scotland' publication, enterprises can be either 'UK owned - Scotland based', 'UK owned - Rest of the UK (RUK) based' or Abroad owned.

As at March 2016, registered private sector enterprises with ultimate base outside Scotland (RUK based or Abroad owned) represented 2.9% of enterprises, accounting for 34.2% of employment and 54.1% of turnover. Within large firms (250+ employees) they represented 81.2% of enterprises, accounting for 62.1% of employment and 74.5% of turnover.

As at March 2016, 34.2% of private sector employment was in enterprises with ultimate base outside Scotland. Breaking this down, 17.7% of Scottish private sector employment was in enterprises with ultimate base in the RUK with 16.5% of employment in enterprises with ultimate ownership Abroad (outside the UK). The share of employment in Abroad owned enterprises varies by industry sector. For example, as at March 2016, 30.3% of Scottish manufacturing employment was in

Abroad-owned enterprises, compared to 3.0% of Scottish real estate activities employment (see Chart 4).

**Chart 4: Share of employment by ownership, by industry sector, 2016**



As at March 2016, there were 1,000 EU abroad-owned enterprises operating in Scotland – employing 127,110 people and generating a turnover of £36 billion (13.2% of all turnover from registered businesses in Scotland or 38.6% of all turnover from abroad-owned registered businesses in Scotland).

**Local Authority Area breakdown (registered enterprises only)**

Between 2015 and 2016, the majority of local authority areas saw an increase in the number of registered enterprises. However, five of Scotland’s 32 local authority areas experienced a falling registered business count between 2015 and 2016 – Aberdeen City (down 155 businesses), Argyll and Bute (-10), Dumfries and Galloway (-65), Na h-Eileanan Siar (-10) and the Orkney Islands (-25). The City of Edinburgh local authority area experienced the greatest increase with a rise of 835 enterprises between 2015 and 2016 – followed by Glasgow City local authority area with an increase of 740 enterprises.

SMEs account for a larger share of employment in the more rural local authority areas, compared to the more urban local authority areas. As at March 2016, SMEs accounted for 86.4% of private sector employment in the Orkney Islands local authority area compared to 37.7% in the Glasgow City local authority area.

**Urban/Rural Area breakdown (registered enterprises only)**

SMEs account for a larger share of private sector employment in rural areas, compared to urban areas. As at March 2016, SMEs accounted for 79.3% of private sector employment in remote rural areas compared to 69.2% in accessible rural areas and 45.8% in the rest of Scotland.

In remote rural areas, the 'Agriculture, Forestry & Fishing' industrial sector had the largest share of private sector employment (18.0%), in accessible rural areas the Manufacturing sector was largest (16.1%) and in the rest of Scotland, the 'Wholesale, Retail and Repair' sector was largest (20.2%).

### Changes to Scotland's registered business stock rate

The registered business stock rate, the total stock of private sector registered enterprises per 10,000 resident adults in Scotland, is the basis of the Scottish Government National Indicator: "Increase the number of businesses".

Between 2015 and 2016, the number of registered enterprises increased by 2.1% - this has increased the business stock rate from 382 to 390.

**Table 1 – Registered private sector businesses per 10,000 adults, Scotland, 2006-2016**

Year	Registered Enterprises	Annual Change	Resident Population	Adults	Businesses per 10,000 adults
2006	147,745	-	4,206,900		351
2007	151,145	2.3%	4,246,400		356
2008	155,285	2.7%	4,281,300		363
2009	155,320	0.0%	4,311,700		360
2010	155,045	-0.2%	4,344,400		357
2011	154,365	-0.4%	4,383,800		352
2012	159,580	3.4%	4,398,900		363
2013	160,050	0.3%	4,416,000		362
2014	166,525	4.0%	4,436,600		375
2015	170,335	2.3%	4,460,700		382
2016	173,995	2.1%	Not Yet Available		390*

Sources – Businesses in Scotland 2016, NRS Mid-year population estimates

\*The provisional business stock rates for 2016 are based on the 2015 Mid-year population estimates.

The 2016 estimate for the indicator is provisional and is based on the currently available mid-year population estimates for 2015. This will be updated in April 2017 when the 2016 mid-year population estimates, needed to form the 'per 10,000 adults' rate, will become available. Further information can be found at:

<http://www.gov.scot/About/Performance/scotPerforms/indicator/businesses>

## Comparisons with the UK Business Stock

Business stock estimates for the UK as a whole are published by the Department for Business, Energy and Industrial Strategy (BEIS). The BEIS [Business Population Estimates 2016](#) show that for the UK as a whole the total number of businesses (registered and unregistered) increased by 1.8% between the start of 2015 and start of 2016. This compares to a decrease of 3.0% for Scotland between March 2015 and March 2016 (as per the Businesses in Scotland 2016 results).

Scotland has a different business stock make-up compared to the UK as a whole. The table below shows that, in 2016, Scotland had a business stock rate of 768 enterprises per 10,000 adults, compared to 1,040 enterprises per 10,000 adults in the UK as a whole.

Scotland has a lower rate of small businesses (particularly those that do not employ others) but a higher rate of medium and large businesses compared to the UK as a whole – see the table below.

Large businesses account for a higher share of Scotland's private sector employment (45%), compared to the UK as a whole (40%).

**Table 2 – Private sector businesses (registered and unregistered) per 10,000 adults, 2016**

Country	Resident Adults Mid-year 2015	Private Sector Enterprises	Private Sector per 10,000 adults				
			Enterprise Size (number of employees)				All Sizes
			None	Small (1-49)	Medium (50-249)	Large (250+)	
UK	52,852,200	5,497,670	789	243	6	1	1,040
Scotland	4,460,700	342,750	545	210	8	5	768

Source: UK - Business Population Estimates 2016, BEIS. Scotland – Businesses in Scotland 2016. Note that the Scotland data, in the table above, is restricted to enterprises that are companies, sole proprietorships, partnerships or public corporations to ensure as much consistency as possible between the UK and Scotland results.

# Scotland Tables

## Time Series 2000 to 2016

The latest 2016 publication tables are consistent for the years 2010 to 2016.

Older tables, available in the [Tables Archive](#), have not been updated to reflect the latest methodological changes and are therefore not consistent with the latest tables for 2010 to 2016.

However, a high level time series for all (registered and unregistered) enterprises and registered enterprises has been constructed for 2000 to 2016. This long time series has been produced on a consistent basis as far as possible.

Web Link	Time Trend	Content
<a href="#">Table Time Series</a>	2000-2016	Number of enterprises (registered and unregistered) by employee sizeband
	2000-2016	Number of registered enterprises by employee sizeband

## All Enterprises

Tables A to E include both registered and unregistered enterprises. Table A **includes** the public sector; Tables B to E **exclude** all public sector enterprises.

Web Link	Time Trend	Content
<a href="#">Table A</a>	2010-2016	Number of enterprises (including public sector) and their total Scottish employment by enterprise legal status and employee sizeband
<a href="#">Table B</a>	2010-2016	Number of enterprises and their total Scottish employment
<a href="#">Table C</a>	2010-2016	Number of enterprises by sector and employee sizeband
<a href="#">Table D</a>	2010-2016	Total Scottish employment in enterprises in Scotland by sector and employee sizeband
<a href="#">Table E</a>	2010-2016	Total Scottish turnover of enterprises in Scotland by sector and employee sizeband

## Registered Enterprises Only

Tables 1, 2, 3 and 14 only include registered businesses (excluding public sector enterprises). Table 4 only refers to public sector enterprises. They all **exclude** estimates for unregistered businesses.

<a href="#">Table 1</a>	2010-2016	Number of registered enterprises in Scotland by sector, division (2 digit SIC), employee sizeband and total Scottish employment and turnover
<a href="#">Table 2</a>	2010-2016	Number of registered enterprises and their total Scottish employment and turnover by sector and country of main base (percentage based in Scotland)
<a href="#">Table 3</a>	2010-2016	Number of registered enterprises and their total Scottish employment and turnover by sector and country of ownership  (Scotland/Rest of UK/UK/Abroad)
<a href="#">Table 4</a>	2010-2016	Public sector registered enterprises and their employment by sector
<a href="#">Table 14</a>	2016	Number of foreign-owned enterprises by country of ownership and their total Scottish employment and turnover

## Local Authority Area Tables

Tables 5 to 8 provide data split by Local Authority. They only include registered businesses (excluding public sector enterprises). They **exclude** all estimates for unregistered businesses.

Web Link	Time Trend	Content
<a href="#">Table 5</a>	2010-2016	Number of registered enterprises in Scotland and their total Scottish employment and turnover by employee sizeband
<a href="#">Table 6</a>	2010-2016	Number of registered enterprises by employee sizeband and sector
<a href="#">Table 7</a>	2010-2016	Number of registered enterprises and their total Scottish employment and turnover by sector
<a href="#">Table 8</a>	2010-2016	Number of business sites of registered enterprises by sector and employee sizeband of site

## Urban Rural Tables

Web Link	Time Trend	Content
<a href="#">Table 9</a>	2010-2016	Number of registered enterprises in Scotland and their total Scottish employment by employee sizeband
<a href="#">Table 10</a>	2010-2016	Number of registered enterprises in Scotland and their total Scottish employment by sector
<a href="#">Table 11</a>	2010-2016	Number of registered enterprises and their total Scottish employment and turnover by sizeband and sector
<a href="#">Table 12</a>	2016	Number of enterprises in the public sector in Scotland and their total Scottish employment by urban/rural classification and broad sector
<a href="#">Table 13</a>	2016	Number of business sites of registered enterprises by urban/rural classification and Local Authority area

All the tables in 'Businesses in Scotland 2016' publication are on a SIC 2007 basis. Please go to the [Tables Archive](#) on the [Businesses in Scotland](#) website for data on a SIC 2003 basis for 2000 to 2010. However, please note that the Archived Tables have not been updated with the latest methodology (to estimate the number of unregistered enterprises) or had the registered enterprise count revised upwards to take account of the extra registered enterprises added to the IDBR in 2012 as a result of improvements made to HMRC computer systems.

# Methodology

## Introduction

The Businesses in Scotland Publication (formerly Scottish Corporate Sector Statistics) provides information about the **number of enterprises operating in Scotland**, broken down by various groupings including industry, business size, local authority area, urban/rural area and country of ownership. The publication includes all enterprises that operate in Scotland regardless of where the enterprise is based. This allows a more comprehensive understanding of the Scottish business environment than is possible via other business population estimates which only allocate enterprises to Scotland if they have their UK base in Scotland.

## Use

Statistics from the 'Businesses in Scotland' publication are used to provide insight into the characteristics of Scotland's business stock, and how Scotland's business stock has changed over time. The data are used to inform decision making and performance monitoring – both inside and outside government. More information on the uses can be found in the on-line [Businesses in Scotland Data Sources, Suitability and Uses Note](#).

## Overview of Methodology and Sources

The estimates have been constructed using data from the [Inter-Departmental Business Register \(IDBR\)](#), the Annual Population Survey (annual version of the [Labour Force Survey \(LFS\)](#)), the [Family Resources Survey \(FRS\)](#) and Self Assessment (SA) data. The IDBR provides the number of enterprises registered for VAT and/or PAYE in Scotland. However there is a substantial number of very small enterprises which have no employees and are therefore not included on the IDBR. A modelling procedure that combines data from the IDBR with estimates derived from the LFS, FRS and SA data is used to estimate the number of unregistered enterprises. The principles of the model were developed by economic consultants working with the then Department of Trade and Industry and Eurostat.

## Key Terms

Business units held on the IDBR can be grouped into 3 types:

### Administrative Units:

- VAT trader and PAYE employer information supplemented with incorporated business data from Companies House.

### Statistical Units:

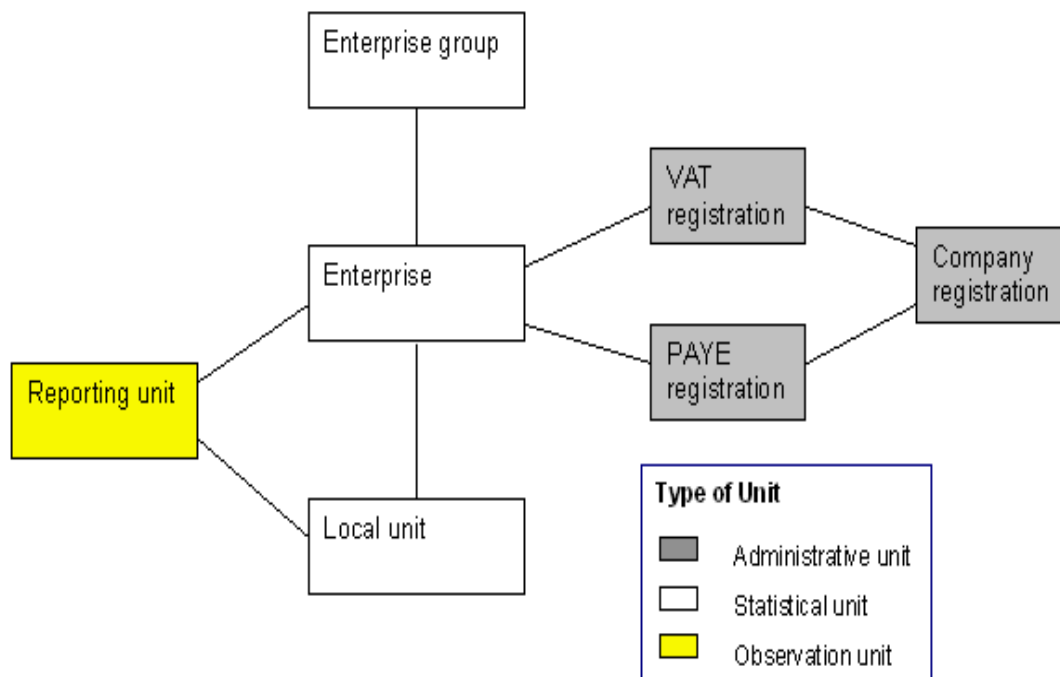


- A group of legal units under common ownership is called an Enterprise Group.
- An **Enterprise** can be defined as the smallest combination of legal units (generally based on VAT and/or PAYE records) that is an organisational unit producing goods or services, which benefits from a certain degree of autonomy in decision-making, especially for the allocation of its current resources. An enterprise carries out one or more activities at one or more locations. An enterprise may be a sole legal unit.
- A **local unit (or business site)** is an enterprise or part thereof (e.g. a workshop, factory, warehouse, office, mine or depot) situated in a geographically identified place.

### Observation Units:

- Reporting Units hold the mailing address to which the survey questionnaires are sent. The questionnaire can cover the enterprise as a whole, or parts of the enterprise identified by lists of local units.

The Businesses in Scotland publication is based on enterprise counts, with the exception of Table 8 and Table 13 which are based on business sites (or local units).



### About the Estimates

The purpose of the publication is to provide information about the number of enterprises but the estimates also include information about enterprises' employment and turnover. The function of these data is to act as 'auxiliary variables' that can be used to (i) classify enterprises by employee/turnover size

band and (ii) calculate shares of employment and turnover across industrial sectors, local areas, business sizes etc. The nature of the underlying processes used to update these variables on the IDBR means that direct comparisons made using the absolute values are less reliable. (See Section 6.4 to 6.6)

Enterprises are counted only once in Scotland-level estimates (Tables 1, 2, 3 and 14) or once each in each of the local authority areas or rural/urban areas they operate in (Tables 5-7 and Tables 9-11). Estimates of the number of business sites in each local authority area are provided in Table 8 and also by urban/rural area in Table 13. (See Section 12)

The estimates do not include turnover information for financial and insurance enterprises as it is not available on a comparable basis.

The figures for unregistered enterprises are estimated primarily using data from a sample survey (LFS), which is subject to sampling error – this should be considered when making year on year comparisons between the number of unregistered enterprises (these make up the majority of the smallest size band in Tables A-E).

## **Time Series**

The 2011 and 2012 publications introduced several methodological changes:

- All data are now published using the Standard Industrial Classification (SIC) 2007 only.
- In 2011 a number of changes were made to the methodology used to estimate the number of unregistered enterprises. See the [Methodology section](#) for more details.
- In 2012 improvements to HMRC computer systems led to previously excluded businesses being added to the IDBR. For Scotland, this resulted in 2,340 extra enterprises being added to the IDBR in 2012; these extra enterprises should have been included in previous years also.

The latest 2016 publication tables on the [Businesses in Scotland](#) website are consistent for the years 2010 to 2016 i.e. all 3 methodological changes above have been applied back to 2010.

Older tables, available in the [Tables Archive](#), have not been updated to reflect the 3 methodological changes and are therefore not consistent with the latest tables for 2010 to 2016.

However, a high level time series for total (registered and unregistered) enterprises and registered enterprises has been constructed for 2000 to 2016. This long time series has been produced on a consistent basis as far as possible – as follows:

- The registered time series has been adjusted upwards to take account of the 2,340 extra enterprises added to the IDBR in 2012. Note that this back revision is based on enterprises that were in operation in 2012, by using the birth dates of the enterprises they can be added into the stock estimates for back years. See Table 1 below.
- The unregistered time series has been adjusted upwards to take account of the improved unregistered enterprises estimation methodology. See table below.

## Constructed Back Series

Year	Original			Constructed Time Series		
	Registered	Unregistered	Total	Registered*	Unregistered**	Total
2000	148,635	89,195	237,830	148,665	91,310	239,970
2001	149,325	94,580	243,905	149,370	96,820	246,195
2002	149,560	102,655	252,215	149,615	105,090	254,700
2003	147,490	115,135	262,625	147,590	117,865	265,455
2004	149,025	122,980	272,005	149,180	125,895	275,075
2005	146,890	120,685	267,575	147,065	123,545	270,610
2006	147,490	119,670	267,160	147,745	122,505	270,250
2007	150,745	128,745	279,490	151,145	131,795	282,940
2008	154,635	127,490	282,125	155,285	130,510	285,800
2009	154,370	137,010	291,380	155,320	140,255	295,575

\* Adjusted for HMRC additions.

\*\* Uprated based on relationship between estimates under old and new methodology in 2010.

## Registered Enterprises

### Source

The Inter-Departmental Business Register (IDBR) is maintained by the Office for National Statistics (ONS) and is a database of all registered enterprises operating in the UK i.e. enterprises that are registered for VAT and/or PAYE. It covers 99% of economic activity in the UK. Those excluded are small sole traders or partnerships with no employees and an annual turnover of less than the VAT threshold.

When an enterprise registers/de-registers for VAT/PAYE with HMRC, this information is fed through to the IDBR. The reporting of de-registrations, however, can be subject to a number of time delays. For example when an enterprise closes there may be a delay before HMRC are informed. Closure of the VAT record may then be delayed until all liabilities are settled. There may also be lags in recording PAYE data.

### **Time Period Covered**

The estimate of registered enterprises is based on a snapshot of the IDBR taken in March of each year (prior to 2005 the November snapshot was used). A Scottish extract provides a count of the IDBR enterprises that were “live” at the snapshot date. However, due to the time lags that often occur in recording de-registrations, an enterprise which had ceased trading by March but had outstanding business with HMRC may still be included on the IDBR at the time the extract is taken. Whilst this introduces some error into the data, this lag impacts on each year so the extracts are consistent over time.

### **Scope**

All tables in the ‘Businesses in Scotland’ Publication (excluding Table A, Table 4 and Table 12) focus on the private sector - that is companies, sole proprietors, partnerships, public corporations/nationalised bodies and not for profit organisations - and exclude central and local government. This differs from the ONS publication “UK Business: Activity, Size and Location” which includes the public sector. Further information about other sources of business information is available in the information note [UK Business Data Sources](#).

### **Employment**

Prior to 2009, the employment information held on the IDBR was mainly drawn from the Business Register Survey and the employment part of the Annual Business Inquiry (ABI/1). The use of these sources caused a considerable time lag in the employment data, so that in each March extract, the majority of employment information was two years out of date i.e. employment estimates for 2009 were mainly based on data from 2007. For some enterprises, however, the employment data was more lagged than this.

The Business Register and Employment Survey (BRES) replaced and integrated the BRS and ABI/1 in 2009. For businesses that are surveyed by BRES, the regional and local estimates of employment are more accurate because, rather than producing data by an apportionment model, they are obtained directly from data reported at site level. Employment data is now updated on the IDBR on a monthly basis rather than annually, as updates are made as completed surveys are

returned. This means that, at any point in time, employment data on the IDBR will be as accurate and up to date as possible, based on the survey returns that have been received at that time.

However, it also means that year on year comparisons made using point in time extracts of the IDBR will be less accurate as businesses are unlikely to return their forms at precisely the same time each year.

The most up to date employment information in 'Businesses in Scotland 2016' tends to be based on data from BRES 2015 (which asks businesses for their level of employment as at September 2015). For some enterprises the employment data will be more lagged than this.

It is important for users to be aware that time lags exist in the employment estimates in every year. However, the difference between the March 2009 and March 2010 extracts were particularly influenced by the change in BRES reporting.

Because BRES (and previously BRS/ABI1) is based on a sample of enterprises, estimates from previous returns and other ONS surveys are also used to update employment on the IDBR. For the smallest enterprises, either PAYE jobs or employment imputed from VAT turnover is used.

Note that the employment estimates refer to the number of employee jobs rather than the number of individual employees. A person who has more than one job will be counted once in each enterprise they work for. Furthermore, no distinction is made between full-time and part-time employees – both count as one employee.

## **Turnover**

On the IDBR, turnover for the majority of registered enterprises is based on VAT returns for a 12 month period. For 2016 these relate to a 12 month period ending in December 2014, or January/February 2015, depending on the reporting pattern of the trader. For other records, in particular members of VAT group registrations, turnover may relate to an earlier period or survey data. For traders who have registered more recently, turnover represents the estimates made by traders at the time of registration. The turnover figures on the IDBR generally exclude VAT but include other taxes, such as the revenue duties on alcoholic drinks and tobacco.

## **Making Comparisons over Time**

The main purpose of the 'Businesses in Scotland' publication is to provide information about the number of enterprises which were operating in Scotland at the time of the IDBR snapshot in March but the estimates also include information about enterprises' employment and turnover. Sections 6.4 and 6.5 explained that these variables are updated on the IDBR via a number of sources and at different

times. This makes it difficult to obtain accurate employment/turnover estimates on the IDBR because the figures for each enterprise may not relate to the same point in time. This should be considered if employment and turnover estimates are compared over time. The employment/turnover data should really be considered to be 'auxiliary variables' that can be used to compare shares across industrial sectors or to determine how shares have changed over a period of several years.<sup>3</sup>

However, comparisons of enterprise counts can be made robustly. As the IDBR is a live register that is continually updated each time an enterprise registers/de-registers for VAT/PAYE, it can be taken as a reliable estimate of the number of enterprises in operation at any point in time. Since 'Businesses in Scotland' data is always based on a March extract of the IDBR, comparisons of enterprise counts from year to year can be considered reliable.

## **Exclusions**

Enterprises with no UK activity or dummy enterprises created to help with clerical procedures are excluded. Enterprises which have zero employment and zero turnover are also excluded as they are holding companies whose activity is recorded elsewhere or are enterprises not contributing to the economy at the time of the estimates.

There were a few instances where several registrations for a single company (usually VAT registrations) occurred at the same address. This may be a result of a legal loophole created as a result of changes in legislation. The Office for National Statistics now exclude these from their publications as the figures would overstate the actual number of businesses in existence and their associated employment in local area tables. Please note the estimates for 2000 and 2001 have not been amended to reflect these changes.

## **Reclassifications**

### *Historic Reclassifications*

The number of public corporations in Scotland decreased from 60 businesses in 2014 to 35 businesses in 2015 – this was largely as a result of the reclassification of Lloyds Banking Group plc. On 30th April 2014, the Office for National Statistics (ONS) announced the reclassification of Lloyds Banking Group plc. (and subsidiaries) as a former Public Corporation into the private sector. More information on this can be found in [Classification of Lloyds Banking Group and Subsidiaries](#).

---

<sup>3</sup> More detailed comparisons can be obtained via [BRES](#) (for employee jobs) or [Scottish Annual Business Statistics](#) (for turnover).

On 17<sup>th</sup> December 2013, the Office for National Statistics (ONS) announced that from 1<sup>st</sup> September 2014, Network Rail would be reclassified as a Central Government body in the public sector. This change can be most clearly seen in Table 4 of the Businesses in Scotland publication, where public sector employment in the 'H Transportation and storage' sector increased by 2,850 (+87%) between 2014 and 2015. More information on this can be found in [Classification of Network Rail](#).

Colleges of Further Education were re-classified by the Office for National Statistics to the public sector in October 2010 for the purposes of National Accounts. The change transferred 35 enterprises from the business sector to the public sector from the March 2011 results onwards. This reclassification has not been applied back to previous years' estimates.

Primary Care NHS Trusts and all remaining NHS Trusts were re-classified by the Office for National Statistics to the public sector in 2001 and 2003 respectively. This was done to bring the 2003 Standard Industrial Classification in line with international guidelines for National Accounts. The change transferred 54,200 and 95,530 jobs from the business sector to the public sector in 2001 and 2003. This has led to a discontinuity between tables as tables previously included this employment.

### **Unregistered Enterprises**

A large number of very small firms are excluded from the IDBR because they are small sole traders/partnerships with no employees and an annual turnover of less than the VAT threshold. This section describes the method used to estimate the number of unregistered enterprises in Scotland.

### **Estimation**

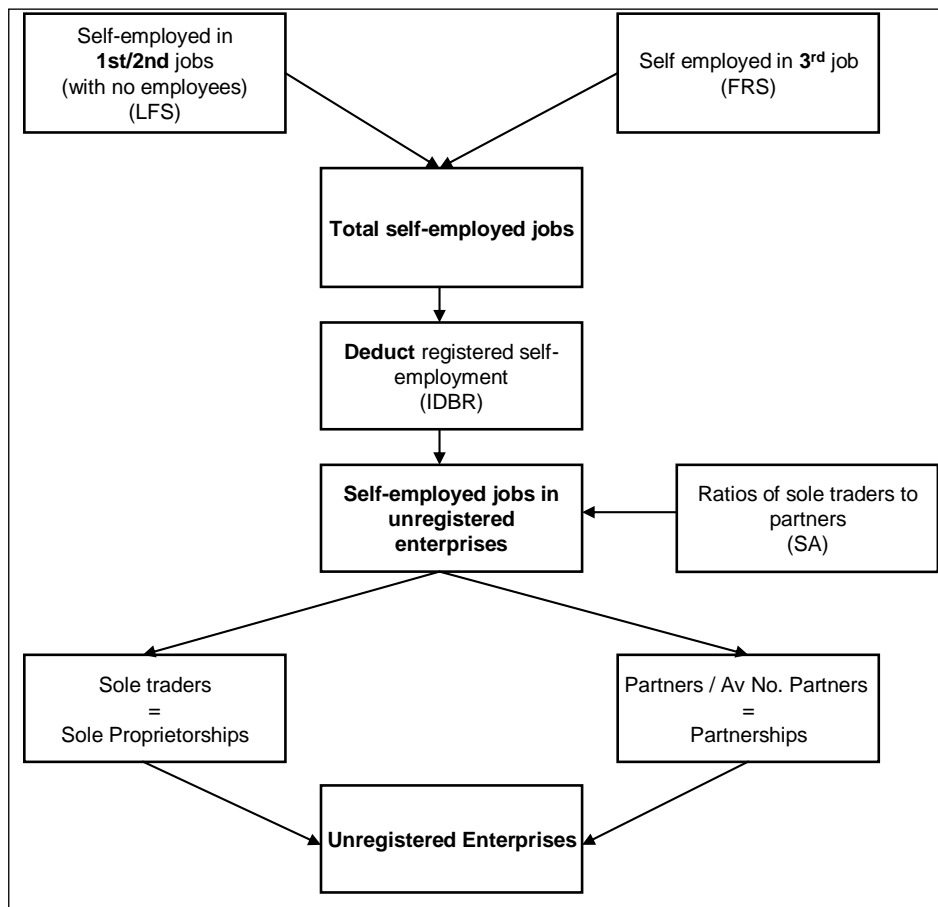
The Labour Force Survey (LFS) provides data on the number of people who are self-employed in their first or second jobs (with no employees). A new methodology has been applied to the estimates from 2010 onwards; the new methodology enables a better estimate of the self-employed to be obtained by reclassifying people who have misclassified their employment status. More information on this improvement can be found in the ['Methodology Changes' information note](#).

The LFS figure for second jobs is augmented by data from the Family Resources Survey (FRS) on people who are self-employed in a third job, to obtain an estimate of the total number of self-employed jobs (with no employees). This estimate is compared to the level of self-employment that is already registered on the IDBR in enterprises (sole traders/partnerships) with no employees. As many self-employed people are not required to pay VAT or register for PAYE, the figure from the LFS/FRS is generally higher.



The difference between these two figures (self-employed jobs in unregistered enterprises) is the starting point for estimating the number of additional sole traders and partners with no employees. The ratio between sole traders and partners is different in each industry and is obtained via HMRC Self Assessment (SA) data. Previously the Survey of Personal Incomes (SPI) was used for this purpose but delays with updated data and more stringent disclosure control processes meant that it was necessary to use a different source. Please see the [‘Methodology Changes’ information note](#) for more information about the effects of using SA data.

**Diagram 1: Estimating Unregistered Enterprises**



The ratios are used to derive the number of unregistered sole traders and partners in each industry and hence the number of sole proprietorships and partnerships.

Note that each of the sample surveys above are subject to sampling error. For example a yearly estimate of 300,000 taken from the Annual Population Survey (annual version of the Labour Force Survey (LFS)) has a 95% confidence interval of +/- 12,000. This sampling error should be considered when making year on year comparisons between the number of unregistered enterprises (the smallest size band in Tables A-E).

### Time Period Covered

The estimate of unregistered enterprises is driven by the self employment estimates from the Labour Force Survey. The LFS data that is used covers the period April to March, i.e. the estimate of unregistered enterprises for 2016 is derived from annual LFS data covering April 2015 to March 2016.

The FRS data used to estimate the number of people self-employed in a third job relative to those who are self-employed in a second job is based on a three year rolling average percentage. The 2016 estimates are based on FRS data from 2012/13, 2013/14 and 2014/15.

Self Assessment data as at 2014/15 were used to obtain the ratio of sole traders to partners for the 2016 estimates.

### **Turnover**

Turnover in unregistered businesses will generally be lower than that of registered businesses of the same size, as turnover in the former would usually be below the VAT threshold. Turnover for the unregistered enterprises is imputed from turnover per head of registered sole traders and partners with zero employees in each industry division and then scaled down by a factor of a half. For a few 2-digit industry divisions, this still leaves average annual turnover per unregistered business above the VAT threshold. In these cases, the unregistered turnover is reduced to the VAT threshold for that year.

### **Industrial Classification**

The industrial sectors presented in the tables are defined by the UK Standard Industrial Classification (SIC). This is used to classify business establishments and other statistical units by the type of economic activity in which they are engaged.

### **Assigning Enterprises to Industrial Sectors**

Enterprises may have business sites operating in several industrial sectors. The enterprise as a whole is assigned to one sector based on the sector and then division in which the majority of its Scottish employment is found. A change in the balance of employment across sites can therefore lead to some enterprises changing their sector between years.

Table 8 provides sector classification at business site level rather than enterprise level.

The classification for this publication follows the standard coding scheme. Some titles have been shortened to make them more readable. The tables generally exclude central and local government (as defined by the legal status of the enterprise). The small number of enterprises that provide support services to public administration are, for these tables, included within the sector 'Other community

social and personal services'. Extra territorial organisations and private households with employees are excluded.

### **Revision of Standard Industrial Classification**

In January 2008, the Standard Industrial Classification underwent a major revision to enable it to more accurately reflect the structure of the modern economy and SIC 2003 was replaced by SIC 2007. The revision was motivated by the need to adapt the classification to changes in the world economy. The revised classification reflects the growing importance of service activities in economies over the last fifteen years, mainly due to the developments in information and communications technologies.

The Businesses in Scotland 2016 tables provide data on registered enterprises for 2010 to 2016 on a SIC 2007 basis. Tables for unregistered enterprises (and hence total enterprises) are available on a SIC 2007 basis for 2010 to 2016. Time series data on total (unregistered and registered) and registered enterprises has also been made available from 2000 to 2016. Data on the old SIC 2003 basis is still available on the Scottish Government website but note that archived tables have not been updated with the latest methodology.

### **VAT Thresholds**

<b>Operative Dates</b>	<b>VAT Registration Threshold</b>
01 Apr 1999 – 31 Mar 2000	£51,000
01 Apr 2000 – 31 Mar 2001	£52,000
01 Apr 2001 – 24 Apr 2002	£54,000
25 Apr 2002 – 09 Apr 2003	£55,000
10 Apr 2003 – 31 Mar 2004	£56,000
01 Apr 2004 – 31 Mar 2005	£58,000
01 Apr 2005 – 31 Mar 2006	£60,000
01 Apr 2006 – 31 Mar 2007	£61,000
01 Apr 2007 – 31 Mar 2008	£64,000
01 Apr 2008 – 30 Apr 2009	£67,000
01 May 2009 – 31 Mar 2010	£68,000
01 Apr 2010 – 31 Mar 2011	£70,000
01 Apr 2011 – 31 Mar 2012	£73,000
01 Apr 2012 – 31 Mar 2013	£77,000
01 Apr 2013 – 31 Mar 2014	£79,000
01 Apr 2014 – 31 Mar 2015	£81,000
01 Apr 2015 – 31 Mar 2016	£82,000
01 Apr 2016 –	£83,000

Further details on VAT thresholds can be found via the following link – [HM Revenue & Customs](#).

## Size Bands

In the tables (with the exception of Table 8), enterprises are classified by employee size bands on the basis of their total UK employees. The rationale behind this approach is that the size of the overall enterprise determines its behaviour as an economic agent. An enterprise with a large number of employees in the UK as a whole is likely to behave like a large enterprise, regardless of its level of Scottish employment. An information note about the effects of using size bands based on UK rather than Scottish employees is available at:

<http://www.gov.scot/Topics/Statistics/Browse/Business/Corporate/sizebands>

Table 8 contains data on the number of business sites and is classified by the total number of employees at each site.

Enterprises with only one employee (who is also the employer) are treated as a self-employed person working in a firm with zero employees unless the enterprise is part of an enterprise group. As these companies provide no employment for others it is more consistent to classify them as enterprises with no employees.

## Public Sector

Public sector enterprises are involved in more varied activities than the majority of those in the private sector, so Table 4 (and Table 12) accounts for this by counting each enterprise once in each sector it has activity in. This helps to provide a more realistic impression of public sector activity in each industry. However, in order to provide accurate figures at Scotland level, each enterprise is counted only once in the total, therefore the table components do not equal the overall total.

Public sector employee jobs estimates at the local authority area level are available via the ONS publication [Business Register Employment Survey](#).

## Geographical Analyses

The geographical analyses use a postcode index file from the Office for National Statistics. Unregistered enterprises are not included in the geographical analyses.

Tables 5-7: These tables split the data by local authority area. They include each enterprise once in each local authority it operates in, irrespective of how many business sites it has in each area. As in Table 4, each enterprise is only counted once in the total for Scotland, hence cells in the enterprise column of the tables do not sum to the overall total due to double counting.

Note that only enterprises are double-counted in these tables – enterprises' employment and turnover, where provided, are assigned to the local authority areas they operate in. However, the sum of the turnover over the local authority areas is slightly lower the Scotland total turnover since turnover for sites in Section K (financial and insurance activities) is not available.

Table 8&13: Table 8 (and Table 13) present data on individual business sites within each local authority area (and urban/rural area for Table 13). This is a straightforward count of the number of sites located in each local authority area (and urban/rural area for Table 13). Note that in Table 8 the employee size bands are based on the number of employees at each site.

Tables 9-11: These tables split the data by urban/rural area. They include each enterprise once in each area it operates in, irrespective of how many business sites it has in each area. As in Tables 5-7, each enterprise is only counted once in the total for Scotland, hence cells in the enterprise column of the tables do not sum to the overall total due to double counting.

Note that only enterprises are double-counted in these tables – enterprises' employment and turnover, where provided, are assigned to the urban/rural areas they operate in. However, the sum of the turnover over the urban/rural areas is slightly lower the Scotland total turnover since turnover for sites in Section K (financial and insurance activities) is not available.

Data on the total number of business sites at intermediate-zone will be made available on the <http://statistics.gov.scot/> site in December 2016.

## **Business Ownership**

Within Businesses in Scotland, business ownership is defined as:

- UK (Scotland based)
- UK (Rest of the UK (RUK) based)
- Abroad

Country of ownership is either UK or Abroad (outside the UK). Business country of ownership is determined by the nationality of the ultimate parent of the business (i.e. the institutional unit, proceeding up a business' chain of control, which is not controlled by another institutional unit). Where control of the business is shared, country of ownership is determined by the country of residence of the majority ultimate owner. Enterprise groups with foreign ownership are identified using data

provided by Dun & Bradstreet. All businesses that do not belong to an enterprise group, and are therefore not under the control of another institutional unit, are classified as UK-owned.

Once it is determined that an enterprise is UK owned, the next step is to classify businesses into whether they are Scotland registered or registered in the Rest of the UK (RUK). Enterprises, and their associated local units, are classified as Scotland registered if the enterprise's VAT/PAYE registered office address is in Scotland. Enterprises, and their associated local units, are classified as registered in RUK if the enterprise's VAT/PAYE registered office address is, outside Scotland, elsewhere in the UK.

### **Statistical Disclosure Control**

The confidentiality of all data held on the IDBR is protected by the Code of Practice for Official Statistics and by specific legislation. The disclosure of data relating to individual undertakings without consent is prohibited under the Statistics of Trade Act 1947, the Value Added Tax Act 1994 and the Finance Act 1969. In accordance with these requirements, measures have been taken to ensure that no information about individual enterprises or local units are disclosed. All figures in this publication have been rounded to avoid disclosure, and where necessary additional measures have been taken to protect confidentiality.

The number of enterprises/business sites are rounded to the nearest 5, employment is rounded to the nearest 10 and turnover is rounded to the nearest £million.

The statistical disclosure control process was updated for the 2010 results onwards. Previously, a minimum threshold rule was applied, whereby the employment and turnover values associated with enterprise counts below a certain threshold were suppressed. To avoid disclosure by deduction, additional cells were also suppressed. To further minimise disclosure, the minimum threshold was lowered and an additional dominance rule was introduced. The dominance rule identifies and suppresses cells where a small number of enterprises account for the majority of the associated employment or turnover. The overall effect of these changes is that more information is included in the tables but greater protection is provided for enterprises which dominate their respective industry or local area.

### **Revisions Policy**

#### **General Revisions Policy for Unregistered Enterprises**

LFS self employment data is the basis for the estimate of unregistered enterprises. ONS reweight the LFS data according to the latest population estimates. As a result, we will revise the unregistered time series to take account of the reweighted

LFS data. These revisions are generally small in magnitude – we will revise to take account of the latest LFS data on a biennial basis (every two years).

### **Unregistered Enterprises – latest revisions**

The unregistered estimates for 2010 to 2015 have not been revised to take account of the latest LFS data. The next set of revisions for this will be in the Businesses in Scotland 2017 publication.

### **General Revisions Policy for Registered Enterprises**

In general, the figures for registered enterprises should be final and should not be revised in future, since they are based on a snapshot in time from the IDBR which cannot change. However sometimes, when quality assuring the data for the latest year, errors in terms of the industry classification applied to businesses may come to light in which case we may correct the erroneous business classifications in previous years. Where these corrections lead to revisions to previously published data, we will flag this up in the revised tables using the 'r' flag.

### **Registered Enterprises – latest revisions**

The registered estimates have not been revised back this year.

### **Making comparisons with other business statistics**

#### **Business Stock Data published by ONS and BEIS**

Business stock estimates for the UK and all regions of the UK (including Scotland) are published by the Office for National Statistics (ONS) and the Department for Business, Energy and Industrial Strategy (BEIS). A key difference between the UK series for Scotland and the 'Businesses in Scotland' publication estimates is that 'Businesses in Scotland' includes all enterprises that operate in Scotland regardless of where the business is based. There are other differences between the publications, and these are explained in the following on-line information notes:

<http://www.gov.scot/Topics/Statistics/Browse/Business/Corporate/ukbusiness>

#### **Scottish Annual Business Statistics**

Scottish Annual Business Statistics (SABS) is another publication released by the Scottish Government. The source of the SABS is the Annual Business Survey. The main purpose of SABS is to provide information on the performance of detailed industry sectors of the Scottish economy, predominately, in terms of turnover or gross value added. As discussed, in section 6.6 above, the employment and turnover estimates provided in the 'Businesses in Scotland' publication are not ideal for comparing change in employment or turnover over time. Scottish Annual Business Statistics is the best source for comparing turnover change over time for detailed industry sectors. More information on the key differences between

Scottish Annual Business Statistics and the 'Businesses in Scotland' publication (formerly Scottish Corporate Sector Statistics) is available at:

<http://www.gov.scot/Topics/Statistics/Browse/Business/SourcesandSuitability/KeyDifferences>



## Contact Details

If you have any enquiries relating to Business Statistics then please contact us at:

Email: [industrystatistics@gov.scot](mailto:industrystatistics@gov.scot)

Telephone: 0300 244 6813

Post: Scottish Government  
Business and Enterprise Statistics  
Office of the Chief Economic Adviser  
5 Atlantic Quay  
150 Broomielaw  
Glasgow  
G2 8LU

We welcome any comments on both the format and content of the website, including any problems you may encounter.

You may also contact the Statistician Group Enquiries for general information.

# Links to area within the Scottish Government

## [Scottish Statistics Website](#)

Scottish Statistics Website has replaced Scottish Neighbourhood Statistics (SNS) website. At this new site, you can access a range of official statistics about Scotland for information and re-use. You can explore the data by theme, organisation, or geography. You can also search for datasets, places or enter your postcode to find data about your local area. The data can be viewed as tables, maps and charts or downloaded in various formats.

## [Growth Sector Statistics Database](#)

The Growth Sector statistics database provides economic statistics for the growth sectors (also known as key sectors) as set out in the [Scotland's Economic Strategy 2015](#).

## [Scottish Annual Business Statistics](#)

Scottish Annual Business Statistics (SABS) provides data mainly on the Production (including Manufacturing), Construction and Service Sectors in Scotland. The Annual Business Survey, from which the statistics are largely derived, covers approximately two thirds of the economy. The main sectors not covered are the financial sector & parts of agriculture and the public sector. These statistics are therefore best suited to the analysis of individual industries rather than the economy as a whole.

## [Business, Enterprise and Energy - Data Sources and Suitability](#)

For background on Businesses in Scotland (formerly Scottish Corporate Sector Statistics) and Scottish Annual Business Statistics (SABS) as data sources including comparison of their differences.

# Links to websites outside the Scottish Government

Please note that when accessing the following links you will leave the Scottish Government website. The Scottish Government and its staff are not responsible for content external to this website.

## [Business Population Estimates](#)

Produced by the Department for Business, Energy and Industrial Strategy, the Business Population Estimates publication is the main UK equivalent of Businesses in Scotland and provides business information for each Government Office Region in the UK broken down by company size and industry. It includes information about registered and unregistered enterprises.

## [UK Business: Activity, Size and Location](#)

The publication UK Business: Activity, Size and Location is produced by the Office for National Statistics (ONS) and contains detailed information on all registered businesses in the UK including size, classification and location.

## [Business Demography](#)

Statistics on Enterprise Births, Deaths and Survival are released annually by the ONS. They are the best official source on business start-ups, closures and survival rates and provide detailed information by local authority, region and industrial sector at a UK level.

The information note [UK Business Data Sources](#) provides more detail about the three publications above and, in particular, explains the key differences between them and Scottish Corporate Sector Statistics (now known as Businesses in Scotland).

## [IDBR](#)

For more information on the Inter Departmental Business Register (IDBR) please see the link above.

## [Business Register and Employment Survey \(BRES\)](#)

Business Register and Employment Survey (BRES) is the preferred source for employment estimates by industry for regional and sub-regional geographies. Data is released annually in September.

## [Public Sector Employment \(PSE\)](#)

Public Sector Employment (PSE) is the preferred source of *public sector* employment data is the National Statistics Public Sector Employment (PSE) series. This is published quarterly by ONS and the Scottish Government and provides

employment estimates at national and regional (government office) level based on public sector returns.

### **[Virtual Microdata Laboratory \(VML\)](#)**

The Virtual Microdata Laboratory (VML) is a facility within the Office for National Statistics (ONS) for providing secure access to sensitive detailed data for statistical research purposes that serve the public good. Access is provided for Approved Researchers working on defined and approved projects. Available data sources include business surveys, social surveys and Census samples. For information, a remote lab is located in Glasgow.

### **[UK Data Service](#)**

The UK Data Service is a comprehensive resource funded by the ESRC to support researchers, teachers and policymakers who depend on high-quality social and economic data. It is a single point of access to a wide range of secondary data including large-scale government surveys, international macrodata, business microdata, qualitative studies and census data.

### **[Scottish Business Information Service](#)**

Scottish Business Information Service (SCOTBIS) provides a research service for businesses across Scotland. SCOTBIS is based on the vast resources of the National Library of Scotland (NLS). At NLS you can access market research reports, business databases, international directories, and business and trade journals.

**Time Series 1: Number of enterprises (registered & unregistered)<sup>1</sup> in Scotland by employee sizeband<sup>2</sup>  
2000-2016<sup>3</sup>**

<b>Employee Sizeband</b>	<b>2000</b>	<b>2001</b>	<b>2002</b>	<b>2003</b>	<b>2004</b>	<b>2005</b>	<b>2006</b>	<b>2007</b>	<b>2008</b>	<b>2009</b>	<b>2010</b>	<b>2011</b>	<b>2012</b>	<b>2013</b>	<b>2014</b>	<b>2015</b>	<b>2016</b>
0 employee	146,155	152,005	160,975	172,155	180,975	177,955	177,295	187,890	187,890	197,395	201,765	214,350	238,670	241,395	229,865	254,045	243,245
1-49 employees	88,220	88,340	87,940	87,615	88,515	87,105	87,215	89,295	92,045	92,230	93,250	91,610	96,390	94,810	99,315	101,135	100,885
50-249 employees	3,350	3,500	3,490	3,415	3,345	3,300	3,480	3,490	3,575	3,640	3,655	3,630	3,635	3,705	3,780	3,870	3,920
250+ employees	2,245	2,345	2,295	2,270	2,240	2,250	2,255	2,265	2,285	2,315	2,260	2,230	2,250	2,270	2,295	2,295	2,365
<b>Total</b>	<b>239,970</b>	<b>246,195</b>	<b>254,700</b>	<b>265,455</b>	<b>275,075</b>	<b>270,610</b>	<b>270,250</b>	<b>282,940</b>	<b>285,800</b>	<b>295,575</b>	<b>300,925</b>	<b>311,820</b>	<b>340,945</b>	<b>342,180</b>	<b>335,255</b>	<b>361,345</b>	<b>350,410</b>

Note: Totals may not equal the sum of the constituent parts due to rounding.

Source : Scottish Government, ONS (IDBR)

Notes:

1. Excludes central and local government.
2. Sizeband is based on the number of employees that the enterprise employs across the UK.
3. To enable a robust comparison over time, this time series has been produced on a consistent basis as far as possible using the latest methodology. These estimates supersede those published in previous Businesses in Scotland and Scottish Corporate Sector Statistics publications.

[For more information on Definitions and Methodology - please click here](#)

**Time Series 2: Number of registered enterprises<sup>1</sup> in Scotland by employee sizeband<sup>2</sup>  
2000-2016<sup>3,4</sup>**

Employee Sizeband	2000	2001	2002	2003	2004	2005	2006	2007	2008	2009	2010	2011	2012	2013	2014	2015	2016
0 employee	54,845	55,185	55,890	54,290	55,080	54,410	54,790	56,095	57,380	57,135	55,880	56,890	57,305	59,265	61,135	63,035	66,825
1-49 employees	88,220	88,340	87,940	87,615	88,515	87,105	87,215	89,295	92,045	92,230	93,250	91,610	96,390	94,810	99,315	101,135	100,885
50-249 employees	3,350	3,500	3,490	3,415	3,345	3,300	3,480	3,490	3,575	3,640	3,655	3,630	3,635	3,705	3,780	3,870	3,920
250+ employees	2,245	2,345	2,295	2,270	2,240	2,250	2,255	2,265	2,285	2,315	2,260	2,230	2,250	2,270	2,295	2,295	2,365
<b>Total</b>	<b>148,665</b>	<b>149,370</b>	<b>149,615</b>	<b>147,590</b>	<b>149,180</b>	<b>147,065</b>	<b>147,745</b>	<b>151,145</b>	<b>155,285</b>	<b>155,320</b>	<b>155,045</b>	<b>154,365</b>	<b>159,580</b>	<b>160,050</b>	<b>166,525</b>	<b>170,335</b>	<b>173,995</b>

Note: Totals may not equal the sum of the constituent parts due to rounding.

Source : Scottish Government, ONS (IDBR)

Notes:

1. Excludes central and local government.
2. Sizeband is based on the number of employees that the enterprise employs across the UK.
3. To enable a robust comparison over time, this time series has been produced on a consistent basis as far as possible using the latest methodology. These estimates supersede those published in previous Businesses in Scotland and Scottish Corporate Sector Statistics publications.
4. HMRC provide information on VAT/PAYE registrations, which forms the basis of the Inter Departmental Business Register (IDBR). In 2012, improvements to HMRC computer systems led to previously excluded businesses being added to the IDBR. For Scotland, this resulted in 2,340 extra enterprises being added to the IDBR in 2012; these extra enterprises should have been included in previous years also. This step change has been taken back in the Scottish statistics as far as possible so as not to hinder time series analysis. This has resulted in the registered enterprises count being revised upwards for previous years when compared to data published in Scottish Corporate Sector Statistics 2011.

[For more information on Definitions and Methodology - please click here](#)

**Table A: Number of enterprises in Scotland and their total Scottish employment and turnover<sup>1</sup> by enterprise legal status and employee sizeband<sup>4</sup>  
March 2016**

Legal Status	Totals			0 to 49 employees			50 to 249 employees			250 or more employees		
	Number of enterprises	Total Scottish employment	Turnover in £ millions	Number of enterprises	Total Scottish employment	Turnover in £ millions	Number of enterprises	Total Scottish employment	Turnover in £ millions	Number of enterprises	Total Scottish employment	Turnover in £ millions
Companies (incl. Building Societies)	108,150	1,490,510	247,460	102,610	429,090	53,058	3,380	226,640	34,793	2,160	834,780	159,608
Sole proprietors	36,975	106,470	6,205	36,945	*	*	25	2,100	92	0	*	*
Partnerships	21,180	123,210	8,174	21,080	112,410	7,419	90	*	*	10	*	*
Public Corporation/ nationalised body	35	20,660	1,880	10	*	*	5	*	*	20	20,230	1,786
Central and local government <sup>2</sup>	210	560,180	17,832	50	480	35	25	1,910	71	135	557,790	17,726
Non-profit making bodies and mutual associations	7,660	178,390	6,367	7,070	46,580	2,332	415	31,020	1,408	170	100,790	2,627
Total registered	174,200	2,479,410	287,918	167,760	692,420	69,002	3,945	270,190	36,811	2,500	1,516,800	182,105
Unregistered enterprises <sup>3</sup>	176,420	195,280	6,029	176,420	195,280	6,029	-	-	-	-	-	-
<b>Total</b>	<b>350,620</b>	<b>2,674,690</b>	<b>293,947</b>	<b>344,175</b>	<b>887,700</b>	<b>75,031</b>	<b>3,945</b>	<b>270,190</b>	<b>36,811</b>	<b>2,500</b>	<b>1,516,800</b>	<b>182,105</b>

Note: Totals may not equal the sum of the constituent parts due to rounding.

Source: Scottish Government, ONS (IDBR)

\* not available due to confidentiality constraints

1. Turnover data for financial intermediation enterprises are not available. Totals exclude turnover of such enterprises.

2. Colleges of Further Education were reclassified as Central Government entities on 13 October 2010, transferring FE Colleges (and any associated employment/turnover) from the private/business sector to the public sector.

This change has not been applied to historical data, and therefore represents a step change in the results from 2011 onwards.

3. [Please refer to Definitions and Methodology for further details of the estimation of unregistered enterprises.](#)

4. Sizeband is based on the number of employees that the enterprise employs across the UK.

5. Includes central and local government.

**Table B: Number of enterprises<sup>1,2</sup> in Scotland, and their total Scottish employment<sup>3</sup> by employee sizeband<sup>4</sup>  
2010 - 2016**

Employee Sizeband	Number of enterprises in Scotland							Total Scottish Employment						
	2010	2011	2012	2013	2014	2015	2016	2010	2011	2012	2013	2014	2015	2016
0	201,765	214,350	238,670	241,395	229,865	254,045	243,245	226,530	240,060	265,930	271,430	257,750	284,760	270,510
1 - 4	60,780	59,840	63,390	60,750	63,420	64,205	64,985	172,960	170,690	180,420	172,200	178,400	178,490	178,570
5 - 9	17,885	17,515	18,465	18,610	20,040	20,530	19,520	126,150	122,860	129,040	130,200	139,860	143,140	136,150
10 - 19	9,775	9,605	9,970	10,480	10,890	11,345	11,275	136,970	134,730	139,260	145,720	150,960	156,950	155,710
20 - 49	4,815	4,650	4,570	4,965	4,965	5,055	5,105	139,490	133,660	130,810	140,990	141,280	144,660	146,280
50 - 99	2,050	2,005	2,015	2,080	2,145	2,200	2,235	112,900	108,060	107,660	109,480	114,680	116,470	119,580
100 - 199	1,305	1,325	1,300	1,275	1,290	1,330	1,320	110,780	111,780	106,820	106,310	104,660	110,280	109,370
200 - 249	295	305	320	350	345	340	365	32,370	33,110	32,240	36,230	36,920	38,030	39,340
250 - 499	760	750	770	795	795	785	805	112,780	102,870	105,820	113,550	116,960	116,190	116,210
500+	1,500	1,485	1,480	1,475	1,500	1,515	1,560	829,220	801,660	806,220	807,560	811,600	818,710	842,800
<b>Total</b>	<b>300,925</b>	<b>311,820</b>	<b>340,945</b>	<b>342,180</b>	<b>335,255</b>	<b>361,345</b>	<b>350,410</b>	<b>2,000,150</b>	<b>1,959,470</b>	<b>2,004,220</b>	<b>2,033,670</b>	<b>2,053,070</b>	<b>2,107,690</b>	<b>2,114,510</b>
0-49 Employees	295,015	305,960	335,060	336,205	329,180	355,180	344,130	802,110	802,000	845,440	860,540	868,250	908,010	887,220
50-249 Employees	3,655	3,630	3,635	3,705	3,780	3,870	3,920	256,050	252,950	246,730	252,030	256,260	264,780	268,280
250+ Employees	2,260	2,230	2,250	2,270	2,295	2,295	2,365	942,000	904,530	912,040	921,110	928,560	934,900	959,010
1+ Employees	99,165	97,475	102,280	100,785	105,390	107,300	107,170	1,773,620	1,719,410	1,738,290	1,762,240	1,795,330	1,822,920	1,844,000

Note: Totals may not equal the sum of the constituent parts due to rounding.

Source: Scottish Government, ONS (IDBR)

1. Excludes central and local government.
2. Colleges of Further Education were reclassified as Central Government entities on 13 October 2010, transferring FE Colleges (and any associated employment/turnover) from the private/business sector to the public sector. This change has not been applied to historical data, and therefore represents a step change in the results from 2011 onwards.
3. [For advice about comparing employment over time please see the Methodology note.](#)
4. Sizeband is based on the number of employees that the enterprise employs across the UK.



**Table C: Number of enterprises<sup>1,2</sup> in Scotland by sector and employee sizeband<sup>3</sup>**  
**March 2016**

Industry	Total	0	1-4	5-9	10-19	20-49	50-249	250+
		Employees	Employees	Employees	Employees	Employees	Employees	Employees
Agriculture, Forestry and Fishing	19,585	12,420	5,645	1,030	390	50	35	15
Mining and quarrying, utilities	3,285	2,415	435	125	85	80	65	80
Manufacturing	18,355	12,270	2,810	1,060	785	585	590	250
Construction	43,250	31,285	8,020	2,010	1,065	440	310	120
Motor trade incl. vehicle repairs	6,455	3,070	2,145	725	275	120	70	45
Wholesale trade	6,490	2,600	1,680	795	585	325	335	165
Retail trade incl. fuel sales	22,105	11,525	6,485	2,315	900	335	240	300
Transportation and storage	20,250	16,960	1,710	555	400	235	225	160
Accommodation and food service activities	17,740	5,370	5,835	3,180	2,085	805	315	150
Information and communication	18,520	14,770	2,640	470	265	145	140	95
Financial and insurance activities	3,685	2,165	880	265	100	65	80	130
Real estate activities	6,840	3,770	2,070	515	265	85	95	45
Professional, scientific and technical activities	53,240	39,215	10,180	1,765	1,020	475	375	215
Administrative and support service activities	24,970	17,480	4,820	1,110	675	280	330	275
Education	16,130	14,800	645	265	185	90	85	55
Human health and social work activities	25,040	18,960	2,070	1,510	1,300	630	410	155
Arts, entertainment and recreation	16,515	13,540	1,535	600	440	220	120	60
Other service activities	27,960	20,625	5,370	1,225	455	140	105	45
<b>Total</b>	<b>350,410</b>	<b>243,245</b>	<b>64,985</b>	<b>19,520</b>	<b>11,275</b>	<b>5,105</b>	<b>3,920</b>	<b>2,365</b>

Note: Figures rounded to the nearest five. Totals may not equal the sum of the constituent parts due to rounding.

Source: Scottish Government, ONS (IDBR)

1. Excludes central and local government.
2. Colleges of Further Education were reclassified as Central Government entities on 13 October 2010, transferring FE Colleges (and any associated employment/turnover) from the private/business sector to the public sector. This change has not been applied to historical data, and therefore represents a step change in the results from 2011 onwards.
3. Sizeband is based on the number of employees that the enterprise employs across the UK.

[For more information on Definitions and Methodology - please click here](#)

**Table D: Total Scottish employment in enterprises<sup>1,2</sup> in Scotland by sector and employee sizeband<sup>3</sup>  
March 2016**

Industry	Total	0	1-4	5-9	10-19	20-49	50-249	250+
		Employees	Employees	Employees	Employees	Employees	Employees	Employees
Agriculture, Forestry and Fishing	57,840	17,780	18,300	7,750	5,390	1,550	*	*
Mining and quarrying, utilities	70,980	2,960	1,020	820	1,120	2,440	*	*
Manufacturing	192,250	13,400	7,700	7,230	10,770	17,580	48,270	87,300
Construction	150,890	32,470	21,210	13,390	14,450	13,600	22,720	33,060
Motor trade incl. vehicle repairs	45,560	3,460	6,450	4,950	3,660	3,680	4,320	19,040
Wholesale trade	71,590	3,160	4,740	5,420	7,680	8,410	16,410	25,770
Retail trade incl. fuel sales	261,920	13,510	20,100	16,400	12,060	9,270	12,120	178,460
Transportation and storage	105,270	17,810	4,800	3,950	5,530	6,660	11,620	54,910
Accommodation and food service activities	191,530	7,420	18,690	22,780	29,030	23,800	26,560	63,270
Information and communication	73,890	16,330	6,010	3,000	3,520	3,860	7,430	33,740
Financial and insurance activities	86,570	3,750	2,040	1,750	1,260	1,350	2,830	73,590
Real estate activities	34,280	5,860	4,930	3,410	3,530	2,410	7,140	7,000
Professional, scientific and technical activities	172,600	42,410	24,130	12,220	14,050	13,070	23,210	43,510
Administrative and support service activities	189,920	18,750	12,440	7,580	9,150	7,650	22,800	111,560
Education	88,240	15,660	1,710	1,890	2,540	2,640	7,960	55,850
Human health and social work activities	186,120	19,580	5,610	11,240	19,910	18,940	33,240	77,600
Arts, entertainment and recreation	71,260	14,400	3,810	4,080	6,090	6,230	11,080	25,580
Other service activities	63,810	21,820	14,870	8,290	5,980	3,140	3,410	6,300
<b>Total</b>	<b>2,114,510</b>	<b>270,510</b>	<b>178,570</b>	<b>136,150</b>	<b>155,710</b>	<b>146,280</b>	<b>268,280</b>	<b>959,010</b>

Note: Totals may not equal the sum of the constituent parts due to rounding.

Source: Scottish Government, ONS (IDBR)

1. Excludes central and local government.

2. Colleges of Further Education were reclassified as Central Government entities on 13 October 2010, transferring FE Colleges (and any associated employment/turnover) from the private/business sector to the public sector. This change has not been applied to historical data, and therefore represents a step change in the results from 2011 onwards.

3. Sizeband is based on the number of employees that the enterprise employs across the UK.

[For more information on Definitions and Methodology - please click here](#)

**Table E: Total Scottish turnover<sup>1,2</sup> of enterprises<sup>3,4</sup> in Scotland by sector and employee sizeband<sup>5</sup>  
March 2016**

Industry	Total	£ millions						
		0 Employees	1-4 Employees	5-9 Employees	10-19 Employees	20-49 Employees	50-249 Employees	250+ Employees
Agriculture, Forestry and Fishing	6,060	915	1,962	919	652	214	*	*
Mining and quarrying, utilities	54,256	169	722	178	246	3,282	*	*
Manufacturing	37,798	466	660	792	1,041	2,330	8,820	23,688
Construction	18,180	1,995	2,252	1,539	1,536	1,623	3,003	6,232
Motor trade incl. vehicle repairs	9,921	252	683	534	539	840	1,409	5,663
Wholesale trade	26,842	466	1,191	3,802	2,439	1,941	6,844	10,158
Retail trade incl. fuel sales	31,002	794	1,696	1,459	1,063	837	1,175	23,979
Transportation and storage	12,458	697	602	544	724	887	1,768	7,236
Accommodation and food service activities	7,516	230	804	762	870	815	1,101	2,935
Information and communication	13,165	725	420	248	318	426	994	10,033
Financial and insurance activities	NA	NA	NA	NA	NA	NA	NA	NA
Real estate activities	3,439	427	652	373	286	275	733	693
Professional, scientific and technical activities	20,310	2,920	2,096	1,144	1,552	1,284	2,866	8,447
Administrative and support service activities	14,136	942	1,687	831	1,155	690	2,340	6,490
Education	2,883	351	101	114	125	126	438	1,628
Human health and social work activities	6,740	543	341	628	1,031	921	1,434	1,842
Arts, entertainment and recreation	8,612	357	213	204	225	211	641	6,761
Other service activities	2,798	629	631	368	278	183	224	487
<b>Total</b>	<b>276,115</b>	<b>12,878</b>	<b>16,713</b>	<b>14,439</b>	<b>14,080</b>	<b>16,886</b>	<b>36,740</b>	<b>164,379</b>

Note: Totals may not equal the sum of the constituent parts due to rounding.

Source: Scottish Government, ONS (IDBR)

1. Turnover figures quoted are in £ millions.
2. Turnover data for financial intermediation enterprises are not available.
3. Excludes central and local government.
4. Colleges of Further Education were reclassified as Central Government entities on 13 October 2010, transferring FE Colleges (and any associated employment/turnover) from the private/business sector to the public sector. This change has not been applied to historical data, and therefore represents a step change in the results from 2011 onwards.
5. Sizeband is based on the number of employees that the enterprise employs across the UK.

[For more information on Definitions and Methodology - please click here](#)

Table 1: Number of Enterprises<sup>1,2</sup> in Scotland by sector<sup>3</sup>, division, employee sizeband<sup>4</sup> and their total Scottish employment and turnover<sup>5</sup>  
March 2016

Division	Division/Industry	0 employees	1-4 employees	5-9 employees	10-19 employees	20-49 employees	50-249 employees	250+ employees	Total Enterprises	Total Scottish Employment	Turnover in £ millions
1	Crop and animal production, hunting and related service activities	8,500	4,840	835	300	35	20	10	14,545	45,030	4,025
2	Forestry and Logging	575	315	80	30	10	5	0	1,010	3,450	517
3	Fishing and Aquaculture	1,155	490	115	60	5	5	5	1,835	6,550	1,421
<b>A</b>	<b>Agriculture, Forestry and Fishing</b>	<b>10,230</b>	<b>5,645</b>	<b>1,030</b>	<b>390</b>	<b>50</b>	<b>35</b>	<b>15</b>	<b>17,390</b>	<b>55,020</b>	<b>5,963</b>
5	Mining of Coal and Lignite	-	-	-	-	0	0	0	5	-	-
6	Extraction of Crude Petroleum and Natural Gas	10	10	5	5	5	15	15	50	11,100	20,283
7	Mining of Metal Ores	-	-	-	-	-	-	-	-	-	-
8	Other Mining and Quarrying	15	20	10	10	10	5	5	75	-	-
9	Mining Support Service Activities	35	50	10	5	10	15	20	145	21,910	7,270
<b>B</b>	<b>Mining and Quarrying</b>	<b>60</b>	<b>80</b>	<b>20</b>	<b>20</b>	<b>25</b>	<b>25</b>	<b>45</b>	<b>275</b>	<b>36,130</b>	<b>28,435</b>
10	Manufacture of Food Products	140	180	90	100	85	100	40	730	34,230	5,458
11	Manufacture of Beverages	75	60	15	15	10	20	15	210	12,450	6,265
12	Manufacture of Tobacco Products	-	-	-	-	-	-	-	-	-	-
13	Manufacture of Textiles	90	100	50	30	20	20	5	315	4,570	545
14	Manufacture of Wearing Apparel	50	105	25	15	15	10	0	220	3,380	223
15	Manufacture of Leather and Related Products	5	10	0	0	5	5	0	25	650	-
16	Manufacture of Wood and of Products of Wood and Cork	295	440	90	60	40	25	5	950	7,890	1,254
17	Manufacture of Paper and Paper Products	15	20	10	15	10	15	10	95	4,380	808
18	Printing and Reproduction of Recorded Media	170	205	70	55	30	20	5	550	4,320	377
19	Manufacture of Coke and Refined Petroleum	0	0	0	0	5	0	0	10	1,130	-
20	Manufacture of Chemicals and Chemical Products	45	45	30	15	15	30	10	195	5,380	2,892
21	Manufacture of Basic Pharmaceutical Products and Pharmaceutical Preparations	5	10	5	-	0	5	5	30	3,200	756
22	Manufacture of Rubber and Plastic Products	40	50	40	40	30	35	15	250	8,810	1,482
23	Manufacture of Other Non-Metallic Mineral Products	55	80	40	35	20	15	15	260	5,010	730
24	Manufacture of Basic Metals	65	25	10	5	10	10	5	130	2,500	809
25	Manufacture of Fabricated and Metal Products	715	465	230	190	115	95	20	1,835	20,970	2,564
26	Manufacture of Computer, Electronic and Optical Products	95	110	40	30	30	40	10	350	9,240	1,499
27	Manufacture of Electrical Equipment	25	40	25	20	25	15	5	155	3,840	674
28	Manufacture of Machinery and Equipment Not Elsewhere Classified	140	155	60	50	45	45	25	520	13,810	3,001
29	Manufacture of Motor Vehicles, Trailers and Semi-Trailers	35	35	10	5	0	10	5	110	3,520	625
30	Manufacture of Other Transport Equipment	100	40	15	5	0	10	5	180	10,550	2,473
31	Manufacture of Furniture	55	95	40	20	15	10	0	235	2,680	261
32	Other Manufacturing	185	255	90	25	20	20	0	595	4,750	391
33	Repair and Installation of Machinery and Equipment	550	280	75	60	45	45	35	1,095	14,740	3,719
<b>C</b>	<b>Manufacturing</b>	<b>2,955</b>	<b>2,810</b>	<b>1,060</b>	<b>785</b>	<b>585</b>	<b>590</b>	<b>250</b>	<b>9,040</b>	<b>182,000</b>	<b>37,556</b>
35	Electricity, Gas, Steam and Air Conditioning Supply	320	210	35	20	5	5	15	605	21,080	23,096
<b>D</b>	<b>Electricity, gas, steam and air conditioning supply</b>	<b>320</b>	<b>210</b>	<b>35</b>	<b>20</b>	<b>5</b>	<b>5</b>	<b>15</b>	<b>605</b>	<b>21,080</b>	<b>23,096</b>
36	Water Collection, Treatment and Supply	5	5	0	0	5	0	5	15	-	-
37	Sewerage	15	20	10	5	5	5	5	60	660	115
38	Waste Collection, Treatment and Disposal Activities; Materials Recovery	65	105	50	35	40	25	15	340	5,840	1,033
39	Remediation Activities and Other Waste Management Services	25	15	10	5	5	5	0	65	-	-
<b>E</b>	<b>Water supply; Sewerage, waste management and remediation activities</b>	<b>110</b>	<b>145</b>	<b>70</b>	<b>45</b>	<b>50</b>	<b>35</b>	<b>20</b>	<b>480</b>	<b>11,340</b>	<b>2,670</b>
41	Construction of Buildings	1,675	1,675	415	215	105	75	40	4,205	32,790	7,303
42	Civil Engineering	560	455	140	95	60	50	25	1,380	18,510	3,081
43	Specialised Construction Activities	4,980	5,895	1,450	755	270	185	60	13,590	74,800	6,689
<b>F</b>	<b>Construction</b>	<b>7,210</b>	<b>8,020</b>	<b>2,010</b>	<b>1,065</b>	<b>440</b>	<b>310</b>	<b>120</b>	<b>19,175</b>	<b>126,090</b>	<b>17,073</b>
45	Wholesale and Retail Trade and Repair of Motor Vehicles and Motorcycles	1,180	2,145	725	275	120	70	45	4,565	43,410	9,824
46	Wholesale Trade, Except of Motor Vehicles and Motorcycles	1,965	1,680	795	585	325	335	165	5,855	70,610	26,790
47	Retail Trade, Except of Motor Vehicles and Motorcycles	3,445	6,485	2,315	900	335	240	300	14,025	252,400	30,593
<b>G</b>	<b>Wholesale and retail trade; Repair of motor vehicles and motorcycles</b>	<b>6,590</b>	<b>10,310</b>	<b>3,840</b>	<b>1,760</b>	<b>785</b>	<b>645</b>	<b>510</b>	<b>24,440</b>	<b>366,420</b>	<b>67,207</b>
49	Land Transport and Transport via Pipelines	1,325	1,120	395	275	155	100	45	3,415	44,500	4,371
50	Water Transport	65	65	20	15	10	10	5	180	2,390	659
51	Air Transport	15	5	0	5	0	5	15	45	4,000	1,403
52	Warehousing and Support Activities for Transportation	220	190	75	75	55	100	80	795	21,120	4,217
53	Postal and Courier Activities	540	335	65	35	15	10	20	1,020	17,760	1,295
<b>H</b>	<b>Transportation and storage</b>	<b>2,165</b>	<b>1,710</b>	<b>555</b>	<b>400</b>	<b>235</b>	<b>225</b>	<b>160</b>	<b>5,455</b>	<b>89,770</b>	<b>11,945</b>

Division	Division/Industry	0 employees	1-4 employees	5-9 employees	10-19 employees	20-49 employees	50-249 employees	250+ employees	Total Enterprises	Total Scottish Employment	Turnover in £ millions
55	Accommodation	375	880	445	410	310	160	60	2,640	54,370	2,657
56	Food and Beverage Service Activities	610	4,955	2,735	1,675	495	155	90	10,715	130,970	4,713
<b>I</b>	<b>Accommodation and food service activities</b>	<b>985</b>	<b>5,835</b>	<b>3,180</b>	<b>2,085</b>	<b>805</b>	<b>315</b>	<b>150</b>	<b>13,355</b>	<b>185,340</b>	<b>7,369</b>
58	Publishing Activities	240	145	55	30	15	5	10	510	6,050	532
59	Motion Picture, Video and Television Programme Production, Sound Recording and Music Publishing	465	210	35	20	10	10	10	765	4,580	498
60	Programming and Broadcasting Activities	30	40	5	5	0	0	5	85	660	80
61	Telecommunications	155	105	30	20	10	15	10	340	19,120	2,957
62	Computer Programming, Consultancy and Related Activities	5,115	2,005	315	180	100	95	50	7,860	31,370	8,692
63	Information Service Activities	210	130	25	15	10	10	10	405	2,080	199
<b>J</b>	<b>Information and communication</b>	<b>6,215</b>	<b>2,640</b>	<b>470</b>	<b>265</b>	<b>145</b>	<b>140</b>	<b>95</b>	<b>9,965</b>	<b>63,860</b>	<b>12,957</b>
64	Financial Service Activities, Except Insurance and Pension Funding	175	220	60	20	10	15	45	545	48,730	NA
65	Insurance, Reinsurance and Pension Funding, Except Compulsory Social Security	10	30	10	0	0	5	15	70	10,060	NA
66	Activities Auxiliary to Financial Services and Insurance Activities	530	630	195	80	55	60	75	1,620	24,760	NA
<b>K</b>	<b>Financial and insurance activities</b>	<b>720</b>	<b>880</b>	<b>265</b>	<b>100</b>	<b>65</b>	<b>80</b>	<b>130</b>	<b>2,235</b>	<b>83,550</b>	<b>NA</b>
68	Real Estate Activities	2,350	2,070	515	265	85	95	45	5,420	31,440	3,322
<b>L</b>	<b>Real estate activities</b>	<b>2,350</b>	<b>2,070</b>	<b>515</b>	<b>265</b>	<b>85</b>	<b>95</b>	<b>45</b>	<b>5,420</b>	<b>31,440</b>	<b>3,322</b>
69	Legal and Accounting Activities	1,365	1,355	540	335	150	80	45	3,875	38,650	2,894
70	Activities of Head Offices; Management Consultancy Activities	6,750	2,640	315	135	60	50	30	9,985	25,070	2,781
71	Architectural and Engineering Activities; Technical Testing and Analysis	7,475	3,860	445	310	170	165	95	12,515	54,330	10,571
72	Scientific Research and Development	140	110	45	35	20	20	20	390	9,250	1,079
73	Advertising and Market Research	400	225	70	30	15	20	15	775	4,310	484
74	Other Professional, Scientific and Technical Activities	2,445	1,910	275	100	35	30	10	4,800	13,390	1,187
75	Veterinary Activities	60	75	75	75	25	10	5	325	4,230	280
<b>M</b>	<b>Professional, scientific and technical activities</b>	<b>18,640</b>	<b>10,180</b>	<b>1,765</b>	<b>1,020</b>	<b>475</b>	<b>375</b>	<b>215</b>	<b>32,665</b>	<b>149,230</b>	<b>19,275</b>
77	Rental and Leasing Activities	480	420	165	120	55	65	50	1,350	14,200	2,361
78	Employment Activities	350	340	125	110	55	100	75	1,155	43,670	2,884
79	Travel Agency, Tour Operator and Other Reservation Service and Related Activities	185	165	50	30	25	20	20	495	7,040	1,680
80	Security and Investigation Activities	100	100	35	30	15	15	25	320	11,880	347
81	Services to Building and Landscape Activities	905	1,405	385	205	85	75	65	3,125	59,920	2,381
82	Office Administrative, Office Support and Other Business Support Activities	2,665	2,395	355	185	40	50	40	5,730	39,420	4,119
<b>N</b>	<b>Administrative and support service activities</b>	<b>4,685</b>	<b>4,820</b>	<b>1,110</b>	<b>675</b>	<b>280</b>	<b>330</b>	<b>275</b>	<b>12,175</b>	<b>176,120</b>	<b>13,771</b>
85	Education	595	645	265	185	90	85	55	1,920	73,210	2,580
<b>P</b>	<b>Education</b>	<b>595</b>	<b>645</b>	<b>265</b>	<b>185</b>	<b>90</b>	<b>85</b>	<b>55</b>	<b>1,920</b>	<b>73,210</b>	<b>2,580</b>
86	Human Health Activities	620	935	820	715	170	55	25	3,335	36,600	1,922
87	Residential Care Activities	15	70	50	70	130	160	60	565	60,850	2,043
88	Social Work Activities Without Accommodation	110	1,065	640	510	330	195	70	2,925	69,850	2,298
<b>Q</b>	<b>Human health and social work activities</b>	<b>745</b>	<b>2,070</b>	<b>1,510</b>	<b>1,300</b>	<b>630</b>	<b>410</b>	<b>155</b>	<b>6,825</b>	<b>167,290</b>	<b>6,262</b>
90	Creative, Arts and Entertainment Activities	635	360	65	25	15	20	5	1,125	5,560	420
91	Libraries, Archives, Museums and Other Cultural Activities	15	90	30	20	30	15	5	205	4,980	128
92	Gambling and Betting Activities	10	25	20	15	10	5	15	105	8,660	6,392
93	Sports Activities and Amusement and Recreation Activities	410	1,060	485	380	165	80	35	2,610	38,870	1,408
<b>R</b>	<b>Arts, entertainment and recreation</b>	<b>1,070</b>	<b>1,535</b>	<b>600</b>	<b>440</b>	<b>220</b>	<b>120</b>	<b>60</b>	<b>4,045</b>	<b>58,080</b>	<b>8,348</b>
94	Activities of Membership Organisations	70	1,225	310	130	80	70	25	1,910	12,220	645
95	Repair of Computers and Personal Household Goods	200	300	60	15	5	10	5	595	3,380	433
96	Other Personal Service Activities	910	3,845	855	310	55	25	15	6,015	27,660	1,176
<b>S</b>	<b>Other service activities</b>	<b>1,180</b>	<b>5,370</b>	<b>1,225</b>	<b>455</b>	<b>140</b>	<b>105</b>	<b>45</b>	<b>8,520</b>	<b>43,260</b>	<b>2,255</b>
	<b>Grand Total</b>	<b>66,825</b>	<b>64,985</b>	<b>19,520</b>	<b>11,275</b>	<b>5,105</b>	<b>3,920</b>	<b>2,365</b>	<b>173,995</b>	<b>1,919,230</b>	<b>270,086</b>

Note: Totals may not equal the sum of the constituent parts due to rounding.

Source : Scottish Government, ONS (IDBR)

\* not available due to confidentiality constraints

Notes:

- Excludes central and local government.
- Colleges of Further Education were reclassified as Central Government entities on 13 October 2010, transferring FE Colleges (and any associated employment/turnover) from the private/business sector to the public sector. This change has not been applied to historical data, and therefore represents a step change in the results from 2011 onwards.
- For more information on Standard Industrial Classification 2007 - please click here.
- Sizeband is based on the number of employees that the enterprise employs across the UK.
- Turnover for financial and insurance activities enterprises are not available on a comparable basis.

For more information on Definitions and Methodology - please click here

**Table 2: Number of registered enterprises<sup>1</sup> and their total Scottish employment and turnover<sup>2</sup> by sector<sup>3</sup> and country of base<sup>4</sup> March 2016**

Sector	Employee Sizeband <sup>5</sup>	Total Enterprises operating in Scotland			Percentage of enterprises based in Scotland <sup>4</sup>		
		Number of enterprises	Total Scottish Employment	Turnover (£ Millions)	Number of enterprises	Total Scottish Employment	Turnover
A Agriculture, Forestry and Fishing (SIC: 01 - 03)	0-49	17,345	47,960	4,566	99.9%	99.7%	99.6%
	50-249	35	-	-	71.4%	-	-
	250+	15	-	-	33.3%	-	-
B Mining and Quarrying (SIC: 05 - 09)	All	17,380	55,020	5,963	99.8%	97.3%	92.1%
	0-49	205	1,460	3,641	97.6%	93.8%	30.2%
	50-249	25	2,050	2,096	80.0%	89.8%	83.7%
C Manufacturing (SIC: 10 - 33)	250+	45	32,620	22,698	55.6%	75.3%	49.5%
	All	275	38,130	28,435	80.1%	78.9%	49.5%
	0-49	8,200	46,430	5,048	99.3%	99.1%	98.3%
D Electricity, gas, steam and air conditioning supply (SIC: 35)	50-249	590	48,270	8,820	77.1%	92.4%	82.6%
	250+	250	87,300	23,688	40.0%	60.4%	54.7%
	All	9,040	192,000	37,556	96.2%	78.7%	67.1%
E Water supply, Sewerage, waste management and remediation activities (SIC: 36 - 39)	0-49	590	1,350	384	98.3%	97.0%	86.2%
	50-249	5	-	-	-	-	-
	250+	15	-	-	33.3%	-	-
F Construction (SIC: 41 - 43)	All	605	21,080	23,096	96.7%	62.7%	-
	0-49	425	3,120	516	98.8%	-	-
	50-249	35	2,090	332	71.4%	91.9%	93.1%
G Motor trade incl. vehicle repairs and fuel sales (SIC: 45)	250+	30	6,130	1,822	-	-	-
	All	480	11,340	2,670	92.7%	82.0%	-
	0-49	18,740	70,320	7,839	99.8%	99.7%	98.4%
H Wholesale trade (SIC: 46)	50-249	310	22,720	3,003	75.8%	92.3%	90.1%
	250+	120	33,060	6,232	33.3%	50.1%	43.1%
	All	19,175	126,090	17,073	98.9%	85.3%	76.8%
I Accommodation and food service activities (SIC: 55 - 56)	0-49	4,450	20,060	2,752	99.7%	99.7%	99.3%
	50-249	70	4,320	1,409	64.3%	93.3%	95.8%
	250+	45	19,040	5,663	22.2%	70.8%	75.1%
J Information and communication (SIC: 58 - 63)	All	4,565	43,410	9,824	98.4%	86.4%	84.8%
	0-49	5,355	28,430	9,787	97.8%	97.5%	71.1%
	50-249	335	18,410	6,844	44.8%	87.6%	90.3%
K Financial and insurance activities <sup>2</sup> (SIC: 64 - 66)	250+	165	25,770	10,158	9.1%	29.9%	39.0%
	All	5,855	70,610	26,790	92.3%	70.4%	62.7%
	0-49	13,480	61,820	5,439	99.5%	99.0%	99.1%
L Real estate activities (SIC: 68)	50-249	240	12,120	1,175	52.1%	87.1%	80.8%
	250+	300	178,460	23,979	6.7%	6.3%	5.7%
	All	14,025	252,400	30,593	96.6%	34.3%	25.2%
M Professional, scientific and technical activities (SIC: 69 - 75)	0-49	5,070	23,240	2,940	99.1%	99.0%	92.4%
	50-249	235	11,620	1,768	53.3%	66.6%	78.8%
	250+	160	54,910	7,236	21.9%	49.7%	42.8%
N Administrative and support service activities (SIC: 77 - 82)	All	5,455	89,770	11,945	95.0%	67.2%	60.3%
	0-49	12,890	95,520	3,334	99.8%	99.4%	98.3%
	50-249	315	28,560	1,101	89.9%	91.3%	91.3%
O Human health and social work activities (SIC: 85 - 88)	250+	150	63,270	2,935	23.3%	26.3%	26.7%
	All	13,355	185,340	7,369	98.7%	73.7%	68.8%
	0-49	9,730	22,680	1,930	99.3%	97.8%	95.7%
P Education (SIC: 85)	50-249	140	7,430	694	46.4%	77.9%	72.2%
	250+	95	33,740	10,033	15.8%	39.5%	8.4%
	All	9,965	63,860	12,957	97.7%	64.7%	26.5%
Q Arts, entertainment and recreation (SIC: 90 - 93)	0-49	2,025	7,130	NA	98.0%	98.2%	NA
	50-249	80	2,830	NA	31.3%	68.6%	NA
	250+	130	73,590	NA	11.5%	65.4%	NA
R Other service activities (SIC: 94 - 99)	All	2,235	83,550	NA	90.6%	68.3%	NA
	0-49	5,285	17,310	1,897	99.3%	98.6%	99.8%
	50-249	95	7,140	733	63.2%	-	-
S Other service activities (SIC: 94 - 99)	250+	45	7,000	693	11.1%	-	-
	All	5,420	31,440	3,322	98.2%	87.3%	83.3%
	0-49	32,075	82,500	7,962	99.5%	99.1%	97.4%
T Administrative and support service activities (SIC: 77 - 82)	50-249	375	23,210	2,866	57.3%	87.7%	83.2%
	250+	215	43,510	8,447	20.9%	48.3%	64.4%
	All	32,665	149,230	19,275	98.9%	82.5%	80.8%
U Administrative and support service activities (SIC: 77 - 82)	0-49	11,570	41,770	4,941	99.4%	99.1%	97.7%
	50-249	330	22,800	2,340	66.7%	92.8%	84.5%
	250+	275	111,560	6,490	20.0%	46.8%	36.6%
V Education (SIC: 85)	All	12,175	178,120	13,771	98.8%	65.2%	66.7%
	0-49	1,780	9,410	514	99.7%	99.7%	99.6%
	50-249	85	7,960	438	76.5%	93.1%	89.3%
W Human health and social work activities (SIC: 85 - 88)	250+	55	55,850	1,628	54.5%	97.1%	95.6%
	All	1,920	73,210	2,580	97.4%	97.0%	95.4%
	0-49	6,260	56,460	2,986	99.3%	99.5%	99.5%
X Arts, entertainment and recreation (SIC: 90 - 93)	50-249	410	33,240	1,434	79.3%	93.8%	91.0%
	250+	155	77,600	1,842	41.9%	57.1%	46.7%
	All	6,825	167,290	6,262	96.8%	78.7%	82.0%
Y Arts, entertainment and recreation (SIC: 90 - 93)	0-49	3,865	21,420	946	99.4%	99.1%	99.3%
	50-249	120	11,080	641	87.5%	96.4%	97.7%
	250+	60	25,580	6,761	50.0%	60.6%	5.8%
Z Other service activities (SIC: 94 - 99)	All	4,045	58,080	8,348	98.1%	81.6%	23.4%
	0-49	8,370	33,550	1,544	99.3%	99.5%	98.6%
	50-249	105	3,410	224	28.6%	-	-
ZZ Other service activities (SIC: 94 - 99)	250+	45	6,300	487	11.1%	-	-
	All	6,520	43,260	2,255	98.1%	89.6%	76.2%
	0-49	167,710	691,940	68,967	99.5%	99.2%	90.5%
Total	50-249	3,920	268,280	36,740	65.9%	91.0%	85.9%
	250+	2,365	953,010	164,279	23.7%	46.7%	44.0%
	Total	173,995	1,919,230	270,986	97.7%	71.8%	61.6%

Note: Totals may not equal the sum of the constituent parts due to rounding.

Source: Scottish Government, ONS (EDP)

<sup>1</sup> Includes central and local government.

<sup>2</sup> Turnover data for financial intermediation enterprises are not available on a comparable basis.

<sup>3</sup> For more information on Standard Industrial Classification 2007, please click here.

<sup>4</sup> For this analysis enterprises were classified as based in Scotland if the enterprise address was in Scotland.

Foreign based companies were classified in the same way, i.e. they were regarded as based in Scotland if their main UK address was in Scotland.

<sup>5</sup> Sizeband is based on the number of employees that the enterprise employs across the UK.

For more information on Definitions and Methodology, please click here.

**Table 3: Number of registered enterprises<sup>1</sup> and their total Scottish employment and turnover<sup>2</sup> by sector<sup>3</sup> and country of ownership<sup>4,5</sup>  
March 2016**

Sector	Employee Sizeband <sup>6</sup>	Country of Ownership														
		UK - Scotland based <sup>7</sup>			UK - RUK based			Total UK			Abroad			Total		
		Number of enterprises	Total Scottish Employment	Turnover (£ millions)	Number of enterprises	Total Scottish Employment	Turnover (£ millions)	Number of enterprises	Total Scottish Employment	Turnover (£ millions)	Number of enterprises	Total Scottish Employment	Turnover (£ millions)	Number of enterprises	Total Scottish Employment	Turnover (£ millions)
	0-49	18,425	52,800	5,785	30	230	291	18,450	53,030	6,076	110	870	3,031	18,565	53,890	9,107
A, B, D, E Primary Industries (SIC: 01 - 03, 05 - 09, 35, 36 - 39)	50-249	60	5,470	911	15	210	85	75	5,680	997	20	1,500	1,953	100	7,180	2,949
	250+	15	18,790	17,253	30	12,080	6,909	45	30,870	24,162	50	31,630	23,945	95	62,500	48,107
	All	18,495	77,060	23,949	75	12,510	7,286	18,575	89,580	31,235	180	33,990	28,929	18,755	123,570	60,164
C Manufacturing (SIC: 10 - 33)	0-49	8,065	44,650	4,194	50	340	59	8,115	45,000	4,253	85	1,440	795	8,200	46,430	5,048
	50-249	350	32,770	4,377	90	2,090	689	440	34,850	5,066	150	13,410	3,754	590	48,270	8,820
	250+	60	29,520	5,950	65	17,530	4,770	125	47,050	10,720	125	40,250	12,968	250	87,300	23,688
	All	8,475	106,940	14,521	205	19,960	5,519	8,680	126,900	20,040	360	55,090	17,516	9,040	182,000	37,556
F Construction (SIC: 41 - 43)	0-49	18,655	69,810	7,626	40	230	124	18,695	70,030	7,750	45	290	89	18,740	70,320	7,839
	50-249	230	20,640	2,666	65	1,300	193	295	21,940	2,859	20	780	144	310	22,720	3,003
	250+	35	16,240	2,671	50	9,120	2,766	90	25,360	4,437	35	7,700	795	120	33,060	6,232
	All	18,925	106,680	12,963	155	10,650	3,082	19,080	117,330	16,046	95	8,760	1,028	19,175	126,090	17,073
G Wholesale and retail trade; repair of motor vehicles and motor cycle (SIC: 45 - 47)	0-49	22,990	107,940	14,490	155	1,100	181	23,145	109,030	14,672	140	1,280	3,306	23,285	110,310	17,978
	50-249	285	25,690	6,372	235	2,800	617	515	28,490	6,989	130	4,360	2,439	645	32,850	9,428
	250+	40	31,610	6,488	255	125,470	18,787	295	157,080	25,275	215	66,190	14,525	510	223,270	39,801
	All	23,310	165,230	27,350	645	129,360	19,586	23,960	294,600	46,936	485	71,830	20,271	24,440	366,420	67,207
H Transportation and storage (SIC: 49 - 53)	0-49	4,995	22,670	2,246	30	170	50	5,025	22,840	2,296	45	410	644	5,070	23,240	2,940
	50-249	110	9,180	1,071	65	1,100	247	175	10,280	1,317	50	1,340	451	225	11,620	1,768
	250+	25	19,990	1,766	55	16,440	2,080	80	36,430	3,846	80	18,480	3,390	160	54,910	7,236
	All	5,130	51,840	5,083	150	17,710	2,377	5,285	69,550	7,460	170	20,230	4,485	5,455	89,770	11,945
I Accommodation and food service activities (SIC: 55 - 56)	0-49	12,845	94,750	3,267	30	520	48	12,875	95,280	3,315	15	250	19	12,890	95,520	3,334
	50-249	270	24,120	939	30	2,700	69	300	25,370	1,008	20	1,190	93	315	26,560	1,101
	250+	30	15,380	618	70	27,610	1,166	100	42,990	1,804	50	20,280	1,130	150	63,270	2,935
	All	13,145	134,260	4,823	130	29,390	1,304	13,275	163,640	6,127	80	21,710	1,242	13,355	185,340	7,369
J Information and communication (SIC: 58 - 63)	0-49	9,610	-	-	60	430	57	9,670	-	-	60	-	-	9,730	22,680	1,930
	50-249	10	4,470	434	40	730	82	90	5,200	516	50	2,230	478	140	7,430	994
	250+	-	-	-	40	11,390	2,372	45	-	-	50	-	-	95	33,740	10,033
	All	9,670	37,150	2,785	135	12,550	2,511	9,805	49,700	5,296	160	14,150	7,661	9,965	63,860	12,957
K Financial and insurance activities <sup>2</sup> (SIC: 64 - 66)	0-49	1,960	6,940	NA	35	110	NA	1,990	7,040	NA	35	90	NA	2,025	7,130	NA
	50-249	20	1,610	NA	35	440	NA	55	2,050	NA	20	790	NA	80	2,830	NA
	250+	10	40,830	NA	60	13,750	NA	70	54,580	NA	60	19,000	NA	130	73,590	NA
	All	1,990	49,370	NA	130	14,300	NA	2,120	63,670	NA	115	19,880	NA	2,235	83,550	NA
L Real estate activities (SIC: 68)	0-49	5,225	16,970	1,745	30	160	61	5,255	17,130	1,806	30	180	90	5,285	17,310	1,897
	50-249	60	-	-	30	490	57	90	-	-	5	-	-	95	7,140	733
	250+	5	-	-	25	2,540	318	35	-	-	10	-	-	45	7,000	693
	All	5,295	27,330	2,701	85	3,190	436	5,380	30,510	3,137	40	930	185	5,420	31,440	3,322
M Professional, scientific and technical activities (SIC: 69 - 75)	0-49	31,810	80,370	7,392	125	650	183	31,940	81,020	7,575	135	1,480	387	32,075	82,500	7,962
	50-249	190	18,020	1,712	115	1,810	263	305	19,840	1,975	70	3,380	891	375	23,210	2,866
	250+	30	12,800	1,245	105	13,630	1,829	135	26,530	3,074	80	16,990	5,373	215	43,510	8,447
	All	32,030	111,300	10,348	345	16,090	2,276	32,375	127,380	12,624	285	21,840	6,652	32,665	149,230	19,275
N Administrative and support service activities (SIC: 77 - 82)	0-49	11,420	40,690	4,536	55	320	93	11,480	41,010	4,628	95	760	313	11,570	41,770	4,941
	50-249	200	19,570	1,609	85	1,300	224	285	20,870	1,833	45	1,930	507	330	22,800	2,340
	250+	50	48,040	2,258	130	35,180	2,073	185	83,220	4,331	90	28,340	2,159	275	111,560	6,490
	All	11,675	108,310	8,403	275	36,790	2,390	11,945	145,100	10,793	230	31,030	2,979	12,175	176,120	13,771
P, Q Education, human health and social work activities (SIC: 85, 86 - 88)	0-49	7,980	65,330	3,466	50	320	16	8,025	65,660	3,483	15	210	17	8,040	65,860	3,500
	50-249	385	38,230	1,657	95	2,260	136	480	40,490	1,792	15	700	80	495	41,190	1,872
	250+	95	97,890	2,378	95	22,760	672	190	120,650	3,049	20	12,800	420	210	133,450	3,470
	All	8,460	201,460	7,501	240	25,340	824	8,700	226,800	8,325	50	13,700	517	8,745	240,500	8,842
R Arts, entertainment and recreation (SIC: 90 - 93)	0-49	3,835	-	-	25	190	7	3,860	-	-	5	-	-	3,865	21,420	946
	50-249	100	-	-	10	350	12	110	-	-	5	-	-	120	11,080	641
	250+	25	15,130	380	25	8,440	6,168	50	23,570	6,547	15	2,010	214	60	25,580	6,761
	All	3,960	46,600	1,866	60	8,980	6,186	4,020	55,580	8,052	20	2,490	297	4,045	58,080	8,348
S Other service activities (SIC: 84, 94 - 96)	0-49	8,300	33,250	1,480	50	160	19	8,350	33,400	1,499	20	140	46	8,370	33,550	1,544
	50-249	30	-	-	70	690	105	100	-	-	5	-	-	105	3,410	224
	250+	5	-	-	30	2,740	209	40	-	-	5	-	-	45	6,300	487
	All	8,335	38,440	1,668	155	3,580	334	8,490	42,020	2,001	30	1,240	253	8,520	43,260	2,255
<b>Total</b>	<b>0-49</b>	<b>166,115</b>	<b>679,030</b>	<b>58,963</b>	<b>770</b>	<b>4,920</b>	<b>1,191</b>	<b>166,885</b>	<b>683,950</b>	<b>60,153</b>	<b>825</b>	<b>7,990</b>	<b>8,813</b>	<b>167,710</b>	<b>691,940</b>	<b>68,967</b>
	<b>50-249</b>	<b>2,335</b>	<b>219,020</b>	<b>23,063</b>	<b>985</b>	<b>16,820</b>	<b>2,780</b>	<b>3,320</b>	<b>235,840</b>	<b>25,843</b>	<b>600</b>	<b>32,440</b>	<b>10,897</b>	<b>3,920</b>	<b>268,280</b>	<b>36,740</b>
	<b>250+</b>	<b>445</b>	<b>363,910</b>	<b>41,934</b>	<b>1,040</b>	<b>318,660</b>	<b>50,140</b>	<b>1,480</b>	<b>682,570</b>	<b>92,074</b>	<b>880</b>	<b>276,440</b>	<b>72,306</b>	<b>2,365</b>	<b>959,010</b>	<b>164,379</b>
	<b>Total</b>	<b>168,895</b>	<b>1,261,960</b>	<b>123,960</b>	<b>2,790</b>	<b>340,400</b>	<b>54,110</b>	<b>171,685</b>	<b>1,602,360</b>	<b>178,070</b>	<b>2,305</b>	<b>316,870</b>	<b>92,016</b>	<b>173,995</b>	<b>1,919,230</b>	<b>270,086</b>

Note: Totals may not equal the sum of the constituent parts due to rounding.  
\* not available due to confidentiality constraints

- Excludes central and local government.
- Turnover for financial and insurance activities enterprises are not available on a comparable basis.
- For more information on Standard Industrial Classification 2007 - please click here.
- The IDBR uses data provided by Dun & Bradstreet to identify enterprise groups with foreign ownership and/or subsidiaries.  
For further information on Dun & Bradstreet, please contact Ron Turner at TurnerR@dnb.com
- Colleges of Further Education were reclassified as Central Government entities on 13 October 2010, transferring FE Colleges (and any associated employment/turnover) from the private/business sector to the public sector.  
This change has not been applied to historical data, and therefore represents a step change in the results from 2011 onwards.
- Sizeband is based on the number of employees that the enterprise employs across the UK.
- UK - Scotland based businesses are enterprises that are UK-owned and that have their registered office in Scotland.

For more information on Definitions and Methodology - please click here

**Table 4: Number of enterprises<sup>1,2</sup> in the public sector in Scotland and their total Scottish employment by sector<sup>3</sup>  
March 2016**

<b>Sector</b>	<b>Number of enterprises<sup>4</sup></b>	<b>Total Scottish employment</b>
A, B, D, E Primary industries <sup>5</sup>	25	6,750
C Manufacturing	5	*
F Construction	25	8,670
G Wholesale and retail trade; Repair of motor vehicles and motorcycles	15	460
H Transportation and storage	35	6,330
I Accommodation and food service activities	20	2,180
J Information and communication	5	*
K Financial and insurance activities	5	*
L Real estate activities	15	1,090
M Professional, scientific and technical activities	35	3,990
N Administrative and support service activities	40	12,190
O Public administration and defence; Compulsory social security	110	147,410
P Education	60	115,160
Q Human health and social work activities	65	239,430
R Arts, entertainment and recreation	45	9,140
S Other service activities	45	3,780
<b>Total</b>	<b>210</b>	<b>560,180</b>

Source : Scottish Government, ONS (IDBR)

Note: Totals may not equal the sum of the constituent parts due to rounding.

\* not available due to confidentiality constraints

1. This data only refers to central and local government.

2. Colleges of Further Education were reclassified as Central Government entities on 13 October 2010, transferring FE Colleges (and any associated employment/turnover) from the private/business sector to the public sector. This change has not been applied to historical data, and therefore represents a step change in the results from 2011 onwards.

[3. For more information on Standard Industrial Classification 2007 - please click here.](#)

4. Counts of the number of enterprises operating within each sector have been derived from an analysis at business site level. These do not sum to the total, as the same enterprise may operate in more than one sector.

5. Primary industries include Agriculture, forestry and fishing, Mining and quarrying and Electricity, gas and water supply.

[For more information on Definitions and Methodology - please click here](#)



**Table 5: Number of registered enterprises<sup>1</sup> in Scotland and their total Scottish employment and turnover<sup>2,3</sup> by Local Authority<sup>4</sup> area  
March 2016**

Local Authority	Total			0 - 49 employees			50 - 249 employees			250+ employees		
	Number of enterprises	Total Scottish employment	Turnover (£ millions)	Number of enterprises	Total Scottish employment	Turnover (£ millions)	Number of enterprises	Total Scottish employment	Turnover (£ millions)	Number of enterprises	Total Scottish employment	Turnover (£ millions)
Aberdeen City	10,040	150,160	45,299	8,785	36,450	11,363	515	25,130	5,760	740	88,580	28,176
Aberdeenshire	14,485	93,540	17,251	13,935	49,530	5,678	270	14,370	2,578	280	29,650	8,994
Angus	4,155	29,450	3,595	3,880	15,790	1,381	105	4,820	720	170	8,850	1,494
Argyll and Bute	4,070	27,850	2,900	3,825	15,440	996	95	3,910	439	150	8,500	1,465
City of Edinburgh	19,285	256,090	25,750	17,530	69,110	7,236	755	31,410	2,968	1,000	155,570	15,545
Clackmannanshire	1,285	11,240	1,278	1,135	4,650	340	35	980	105	110	5,620	833
Dumfries and Galloway	6,705	49,400	5,740	6,250	27,010	2,226	135	6,290	877	320	16,100	2,637
Dundee City	3,760	51,810	5,185	3,170	15,630	1,134	185	8,670	845	405	27,500	3,206
East Ayrshire	3,405	28,060	2,763	3,105	12,800	1,037	75	3,640	410	220	11,620	1,316
East Dunbartonshire	3,160	21,720	2,058	2,950	10,350	746	45	2,340	212	165	9,030	1,100
East Lothian	3,260	23,120	2,560	3,045	12,540	1,091	65	2,680	379	145	7,900	1,091
East Renfrewshire	2,730	15,410	1,356	2,565	8,220	600	50	2,030	167	115	5,150	588
Falkirk	4,195	44,460	6,942	3,700	14,660	1,456	160	6,670	1,500	340	23,130	3,987
Fife	9,760	102,400	13,625	9,075	38,210	3,001	255	13,190	1,723	425	50,990	8,902
Glasgow City	18,910	308,600	37,787	16,905	77,100	6,938	895	39,240	4,823	1,110	192,260	26,026
Highland	11,485	83,460	9,915	10,740	41,820	3,305	290	12,800	1,674	455	28,840	4,935
Inverclyde	1,860	21,150	2,589	1,625	6,510	513	50	2,640	209	180	11,990	1,867
Midlothian	2,495	22,160	2,191	2,245	10,350	878	85	3,240	404	170	8,570	910
Moray	3,485	28,860	3,410	3,165	13,330	1,079	110	4,090	543	210	11,440	1,787
Na h-Eileanan Siar	1,230	7,120	750	1,155	4,610	330	25	880	87	50	1,640	332
North Ayrshire	3,480	30,200	3,819	3,145	13,100	1,081	110	5,290	618	225	11,810	2,120
North Lanarkshire	7,910	92,940	14,939	7,075	29,150	2,619	325	14,380	1,622	510	49,410	10,698
Orkney Islands	1,530	7,940	727	1,460	5,940	369	25	930	132	45	1,080	226
Perth and Kinross	6,485	54,630	12,177	5,965	25,050	2,003	195	7,870	787	325	21,710	9,386
Renfrewshire	5,015	67,040	9,209	4,390	18,750	1,609	195	9,410	1,454	425	38,880	6,146
Scottish Borders	5,330	34,140	3,272	5,015	19,590	1,630	120	6,030	628	190	8,520	1,014
Shetland Islands	1,530	10,830	1,682	1,440	5,730	597	40	1,980	240	50	3,120	845
South Ayrshire	3,885	35,230	5,189	3,455	14,810	1,114	120	4,840	564	310	15,580	3,511
South Lanarkshire	9,285	89,950	12,671	8,585	34,680	2,987	260	12,120	1,633	440	43,150	8,051
Stirling	4,275	37,520	3,973	3,810	14,870	1,220	145	4,860	950	325	17,790	1,802
West Dunbartonshire	2,040	20,130	2,271	1,780	8,100	741	65	2,570	253	195	9,460	1,277
West Lothian	5,065	62,640	7,214	4,390	18,060	1,666	220	9,020	1,435	455	35,570	4,113
<b>Scotland Total<sup>5</sup></b>	<b>173,995</b>	<b>1,919,230</b>	<b>270,086</b>	<b>167,710</b>	<b>691,940</b>	<b>68,967</b>	<b>3,920</b>	<b>268,280</b>	<b>36,740</b>	<b>2,365</b>	<b>959,010</b>	<b>164,379</b>

Note: This data only refers to the registered enterprises. Unregistered are sole traders and partnerships who are not registered for PAYE or VAT.

Source: Scottish Government, ONS (IDBR)

Totals may not equal the sum of the constituent parts due to rounding.

1. Excludes central and local government.
2. Turnover for financial and insurance activities enterprises are not available. Totals exclude turnover of such enterprises.
3. [For more information on Standard Industrial Classification 2007 - please click here.](#)
4. Includes June 2002 LA boundary changes between The City of Edinburgh & West Lothian and Glasgow City & Renfrewshire.
5. Each enterprise is counted once in each local authority it operates in. The sum of the local authority enterprises do not equal the overall Scotland totals because each enterprise is only counted once in the Scotland figures.  
Note that only enterprises are double-counted in these tables – each enterprise's employment and turnover are accurately assigned to the local authorities they operate in therefore the sum of these columns do correspond to the Scotland totals.
6. Sizeband is based on the number of employees that the enterprise employs across the UK.

[For more information on Definitions and Methodology - please click here](#)

**Table 6: Number of registered enterprises<sup>1,2</sup> by Local Authority area<sup>3</sup>, employee sizeband and sector<sup>4</sup>**  
**March 2016**

Local Authority	Employee Sizeband	A Agriculture, Forestry and Fishing	B Mining and Quarrying	C Manufacturing	D Electricity, gas, steam and air conditioning supply	E Water supply; Sewerage, waste management and remediation activities	F Construction	G Wholesale and retail trade; Repair of motor vehicles and motorcycles	H Transportation and storage	I Accommodation and food service activities	J Information and communication	K Financial and insurance activities	L Real estate activities	M Professional, scientific and technical activities	N Administrative and support service activities	P Education	Q Human health and social work activities	R Arts, entertainment and recreation	S Other service activities	Grand Total
Aberdeen City	0 - 49	95	65	375	10	10	600	850	215	455	425	80	295	3,695	755	100	280	95	380	<b>8,785</b>
	50 - 249	0	15	65	0	5	25	100	35	55	10	5	10	85	55	10	10	10	10	<b>515</b>
	250+	0	35	45	5	5	20	235	55	50	20	35	10	65	85	10	45	15	15	<b>740</b>
	Total	95	115	485	10	20	645	1,185	310	540	455	120	320	3,845	895	120	350	120	405	<b>10,040</b>
Aberdeenshire	0 - 49	2,975	45	660	110	25	1,405	1,250	335	565	390	50	245	3,935	965	115	280	190	410	<b>13,935</b>
	50 - 249	5	5	45	0	5	25	60	10	15	5	0	5	25	25	5	25	5	5	<b>270</b>
	250+	5	15	35	5	5	10	65	10	20	5	15	0	20	25	0	10	0	5	<b>280</b>
	Total	2,980	65	740	110	30	1,445	1,375	360	600	400	70	245	3,980	1,010	120	340	190	420	<b>14,485</b>
Angus	0 - 49	650	10	195	30	10	460	520	130	275	80	10	95	740	255	45	120	75	175	<b>3,880</b>
	50 - 249	10	0	25	0	0	5	25	5	5	0	0	5	5	0	0	5	0	0	<b>105</b>
	250+	5	5	10	0	0	0	70	5	10	5	10	5	5	10	0	20	5	5	<b>170</b>
	Total	665	15	230	35	15	470	615	135	295	85	25	100	750	265	50	150	85	180	<b>4,155</b>
Argyll and Bute	0 - 49	840	5	170	30	5	375	605	100	445	105	15	90	395	210	30	135	110	155	<b>3,825</b>
	50 - 249	5	0	10	0	0	5	15	5	15	0	0	5	5	5	5	10	5	0	<b>95</b>
	250+	5	0	5	5	0	5	45	5	15	5	10	5	10	0	20	10	0	0	<b>150</b>
	Total	845	0	185	35	5	385	665	115	475	110	25	100	405	225	35	170	120	160	<b>4,070</b>
City of Edinburgh	0 - 49	135	5	485	65	15	1,395	2,030	230	1,495	2,300	505	795	4,245	1,340	250	835	515	885	<b>17,530</b>
	50 - 249	5	0	25	0	0	5	125	30	25	50	35	20	130	55	25	85	20	45	<b>755</b>
	250+	5	5	25	5	5	25	295	5	50	90	45	75	25	110	15	75	25	25	<b>1,000</b>
	Total	140	10	540	70	20	1,440	2,455	305	1,660	2,395	615	855	4,480	1,505	285	935	555	960	<b>19,285</b>
Clackmannanshire	0 - 49	50	0	80	5	5	150	175	45	105	60	5	30	190	90	15	40	25	70	<b>1,135</b>
	50 - 249	0	0	0	0	0	0	10	0	5	0	0	0	5	0	0	5	0	0	<b>35</b>
	250+	0	0	0	0	0	0	5	0	5	0	0	0	0	0	0	0	0	0	<b>110</b>
	Total	50	0	80	5	5	155	235	45	115	60	5	30	195	90	15	45	25	70	<b>1,285</b>
Dumfries and Galloway	0 - 49	2,070	5	275	20	20	620	820	205	520	35	220	105	435	220	45	220	120	265	<b>6,250</b>
	50 - 249	5	0	25	0	0	10	35	5	10	0	0	5	5	5	0	20	5	0	<b>135</b>
	250+	0	5	15	0	0	10	140	5	15	20	5	10	5	5	10	5	5	5	<b>320</b>
	Total	2,075	10	320	25	25	635	1,000	225	580	105	55	115	445	225	35	275	135	270	<b>6,705</b>
Dundee City	0 - 49	15	0	195	0	10	370	595	85	325	160	50	155	480	185	40	180	70	250	<b>3,170</b>
	50 - 249	0	0	25	0	5	15	45	5	15	5	5	5	5	5	5	5	5	5	<b>185</b>
	250+	0	0	10	5	5	10	190	15	25	10	25	5	15	35	5	35	10	10	<b>405</b>
	Total	15	5	225	5	15	390	825	105	365	175	80	170	510	235	45	240	85	265	<b>3,760</b>
East Ayrshire	0 - 49	460	0	195	5	10	370	530	130	235	105	25	70	400	195	15	105	70	200	<b>3,105</b>
	50 - 249	0	0	15	0	0	5	15	0	0	0	0	5	5	5	5	15	5	0	<b>75</b>
	250+	0	5	5	5	5	5	85	5	15	5	20	5	25	5	20	5	10	5	<b>220</b>
	Total	460	5	215	5	15	375	625	140	255	105	45	75	415	225	20	145	80	200	<b>3,405</b>
East Dunbartonshire	0 - 49	50	5	135	0	10	395	395	80	145	240	35	120	705	200	35	145	80	185	<b>2,950</b>
	50 - 249	0	0	0	0	0	5	0	5	0	5	0	5	0	0	0	0	0	0	<b>45</b>
	250+	0	0	5	0	0	5	65	0	5	0	5	5	5	5	5	5	5	5	<b>185</b>
	Total	50	5	145	0	15	400	465	80	165	240	50	125	710	215	40	180	90	185	<b>3,160</b>
East Lothian	0 - 49	305	0	125	5	5	375	425	75	225	225	40	80	525	245	35	130	100	120	<b>3,045</b>
	50 - 249	0	0	10	0	0	5	15	0	5	0	0	0	5	5	0	15	5	0	<b>65</b>
	250+	5	5	5	0	5	5	35	5	15	5	10	0	5	5	5	25	10	5	<b>145</b>
	Total	310	5	140	10	10	385	475	80	245	230	50	80	530	250	40	150	115	120	<b>3,260</b>
East Renfrewshire	0 - 49	65	0	100	0	5	275	350	50	230	40	130	600	200	35	130	75	165	165	<b>2,565</b>
	50 - 249	0	0	5	0	0	5	10	0	5	0	0	5	0	0	0	15	0	0	<b>50</b>
	250+	0	0	0	0	0	0	5	0	5	0	0	5	0	0	0	15	0	0	<b>110</b>
	Total	65	0	105	0	5	285	410	55	135	230	50	135	600	210	35	160	85	165	<b>2,730</b>
Falkirk	0 - 49	115	5	210	5	20	435	615	175	265	260	35	75	750	260	40	130	75	235	<b>3,700</b>
	50 - 249	0	0	25	0	0	15	30	15	10	0	5	5	15	10	5	15	5	0	<b>160</b>
	250+	0	5	15	0	5	20	130	20	5	20	5	15	10	30	0	35	10	10	<b>340</b>
	Total	115	5	255	5	25	470	780	210	290	285	60	85	775	300	40	185	85	245	<b>4,195</b>
Fife	0 - 49	630	5	595	15	30	1,110	1,415	280	750	495	85	210	1,645	615	95	355	230	525	<b>9,075</b>
	50 - 249	0	5	50	0	0	20	45	5	25	5	0	5	25	20	5	30	10	5	<b>255</b>
	250+	5	5	30	5	10	40	330	45	70	45	90	30	100	145	20	85	20	25	<b>1,110</b>
	Total	630	10	675	20	35	1,140	1,625	295	810	515	105	225	1,685	670	105	425	250	535	<b>9,760</b>
Glasgow City	0 - 49	35	5	765	15	60	1,515	2,935	360	1,560	1,465	355	895	3,215	1,125	230	910	455	1,015	<b>16,905</b>
	50 - 249	0	0	75	0	5	50	175	30	55	35	35	35	130	90	20	100	15	40	<b>895</b>
	250+	0	5	40	5	10	40	330	45	70	45	90	30	100	145	20	85	20	25	<b>1,110</b>
	Total	35	10	880	20	70	1,610	3,440	435	1,685	1,550	480	955	3,445	1,360	270	1,090	495	1,080	<b>18,910</b>
Highland	0 - 49	2,210	20	510	55	20	1,455	1,275	315	1,015	240	60	310	1,430	715	90	350	265	405	<b>10,740</b>
	50 - 249	5	0	35	0	5	20	55	5	30	5	5	10	30	15	5	35	15	5	<b>290</b>
	250+	5	5	25	5	5	15	180	5	30	25	10	5	15	20	5	35	10	10	<b>455</b>
	Total	2,220	25	565	60	25	1,485	1,510	360	1,085	265	80	320	1,485	770	100	420	285	420	<b>11,485</b>
Inverclyde	0 - 49	35	0	85	15	0	170	290	45	145	80	15	60	355	85	25	60	30	105	<b>1,625</b>
	50 - 249	0	0	0	0	0	0	5	0	5	0	0	0	5	0	5	15	0	0	<b>50</b>
	250+	0	0	5	0	0	0	5	0	5	0	0	5	5	0	20	10	5		

Local Authority	Employee Sizeband	A Agriculture, Forestry and Fishing	B Mining and Quarrying	C Manufacturing	D Electricity, gas, steam and air conditioning supply	E Water supply; Sewerage, waste management and remediation activities	F Construction	G Wholesale and retail trade; Repair of motor vehicles and motorcycles	H Transportation and storage	I Accommodation and food service activities	J Information and communication	K Financial and insurance activities	L Real estate activities	M Professional, scientific and technical activities	N Administrative and support service activities	P Education	Q Human health and social work activities	R Arts, entertainment and recreation	S Other service activities	Grand Total
North Lanarkshire	0 - 49	140	5	440	10	25	1,105	1,235	490	555	375	100	185	1,045	495	65	260	125	420	7,075
	50 - 249	0	0	55	0	5	45	65	35	15	10	5	5	15	25	5	30	5	5	325
	250+	0	5	40	5	10	40	150	20	15	20	10	20	70	5	30	20	20	10	510
	<b>Total</b>	<b>140</b>	<b>10</b>	<b>530</b>	<b>15</b>	<b>40</b>	<b>1,190</b>	<b>1,450</b>	<b>570</b>	<b>595</b>	<b>400</b>	<b>125</b>	<b>195</b>	<b>1,080</b>	<b>595</b>	<b>75</b>	<b>320</b>	<b>150</b>	<b>435</b>	<b>7,910</b>
Orkney Islands	0 - 49	680	5	45	30	0	135	155	40	70	20	0	15	95	65	5	35	25	40	1,460
	50 - 249	0	0	0	0	0	0	5	5	5	0	0	0	5	0	0	0	0	0	25
	250+	0	0	5	0	0	0	10	5	0	0	5	0	0	0	5	0	0	0	45
	<b>Total</b>	<b>680</b>	<b>5</b>	<b>50</b>	<b>30</b>	<b>0</b>	<b>135</b>	<b>175</b>	<b>50</b>	<b>75</b>	<b>20</b>	<b>10</b>	<b>100</b>	<b>70</b>	<b>70</b>	<b>10</b>	<b>30</b>	<b>25</b>	<b>40</b>	<b>1,530</b>
Perth and Kinross	0 - 49	965	0	270	60	20	725	850	150	480	235	55	190	845	440	55	205	160	260	5,965
	50 - 249	5	0	15	0	0	10	40	5	25	0	5	10	15	10	10	25	10	5	195
	250+	5	5	15	5	5	5	140	10	25	5	20	5	10	25	0	35	10	5	325
	<b>Total</b>	<b>970</b>	<b>5</b>	<b>300</b>	<b>65</b>	<b>25</b>	<b>740</b>	<b>1,030</b>	<b>170</b>	<b>535</b>	<b>245</b>	<b>80</b>	<b>205</b>	<b>870</b>	<b>475</b>	<b>65</b>	<b>265</b>	<b>180</b>	<b>270</b>	<b>6,485</b>
Renfrewshire	0 - 49	120	0	290	10	15	595	735	170	290	210	130	830	315	50	185	90	285	4,390	
	50 - 249	0	0	20	0	0	20	35	25	15	0	0	5	15	25	0	20	5	5	195
	250+	0	0	30	0	5	10	155	5	50	20	15	5	40	5	5	40	15	5	425
	<b>Total</b>	<b>120</b>	<b>5</b>	<b>340</b>	<b>10</b>	<b>20</b>	<b>630</b>	<b>925</b>	<b>245</b>	<b>340</b>	<b>220</b>	<b>85</b>	<b>140</b>	<b>850</b>	<b>310</b>	<b>55</b>	<b>240</b>	<b>115</b>	<b>300</b>	<b>5,015</b>
Scottish Borders	0 - 49	1,255	0	235	15	5	600	685	115	355	180	35	120	595	310	55	130	145	165	5,015
	50 - 249	5	0	15	0	0	5	35	0	10	0	0	10	10	0	5	20	0	5	120
	250+	0	0	10	5	0	5	80	5	10	5	10	5	0	15	0	25	5	5	190
	<b>Total</b>	<b>1,255</b>	<b>5</b>	<b>260</b>	<b>15</b>	<b>10</b>	<b>610</b>	<b>795</b>	<b>125</b>	<b>375</b>	<b>190</b>	<b>45</b>	<b>130</b>	<b>605</b>	<b>330</b>	<b>60</b>	<b>175</b>	<b>155</b>	<b>190</b>	<b>5,330</b>
Shetland Islands	0 - 49	580	0	70	10	0	145	140	50	80	20	5	20	150	70	5	35	15	50	1,440
	50 - 249	0	0	5	0	0	0	5	0	0	0	0	0	0	0	0	0	0	0	40
	250+	0	0	0	0	0	0	10	0	0	0	5	0	5	0	5	0	0	0	50
	<b>Total</b>	<b>585</b>	<b>5</b>	<b>75</b>	<b>10</b>	<b>5</b>	<b>150</b>	<b>160</b>	<b>65</b>	<b>80</b>	<b>20</b>	<b>10</b>	<b>20</b>	<b>155</b>	<b>80</b>	<b>10</b>	<b>40</b>	<b>20</b>	<b>50</b>	<b>1,530</b>
South Ayrshire	0 - 49	425	0	150	10	5	415	580	110	290	125	45	125	500	215	35	115	100	205	3,455
	50 - 249	0	0	15	0	0	5	30	0	15	0	0	0	10	5	0	25	5	0	120
	250+	0	0	15	0	0	5	140	10	25	10	15	5	5	10	0	35	10	5	310
	<b>Total</b>	<b>430</b>	<b>5</b>	<b>180</b>	<b>10</b>	<b>10</b>	<b>425</b>	<b>750</b>	<b>125</b>	<b>330</b>	<b>135</b>	<b>65</b>	<b>135</b>	<b>515</b>	<b>245</b>	<b>35</b>	<b>170</b>	<b>115</b>	<b>215</b>	<b>3,885</b>
South Lanarkshire	0 - 49	610	5	550	30	30	1,145	1,425	425	585	485	125	220	1,330	590	95	295	170	470	8,585
	50 - 249	0	0	45	0	0	25	50	15	15	5	0	5	25	20	5	20	5	5	260
	250+	0	5	20	5	5	20	165	30	35	10	20	15	40	5	40	15	5	5	440
	<b>Total</b>	<b>610</b>	<b>10</b>	<b>625</b>	<b>35</b>	<b>40</b>	<b>1,190</b>	<b>1,640</b>	<b>465</b>	<b>630</b>	<b>500</b>	<b>145</b>	<b>235</b>	<b>1,370</b>	<b>650</b>	<b>105</b>	<b>360</b>	<b>190</b>	<b>480</b>	<b>9,285</b>
Stirling	0 - 49	395	0	140	5	5	405	510	95	315	250	55	405	160	750	270	145	70	180	3,810
	50 - 249	5	0	15	0	0	10	35	5	20	5	0	5	20	10	5	10	5	5	145
	250+	0	0	0	0	0	10	150	5	25	10	20	5	5	30	5	25	10	5	325
	<b>Total</b>	<b>395</b>	<b>5</b>	<b>165</b>	<b>5</b>	<b>10</b>	<b>415</b>	<b>695</b>	<b>110</b>	<b>360</b>	<b>265</b>	<b>75</b>	<b>170</b>	<b>775</b>	<b>305</b>	<b>65</b>	<b>185</b>	<b>85</b>	<b>190</b>	<b>4,275</b>
West Dunbartonshire	0 - 49	45	5	130	0	5	255	290	65	165	85	20	50	255	125	20	85	50	125	1,780
	50 - 249	0	0	10	0	0	5	15	5	10	0	0	0	5	5	0	10	5	0	65
	250+	0	0	0	0	0	5	85	5	15	5	15	5	5	15	0	15	10	5	195
	<b>Total</b>	<b>45</b>	<b>5</b>	<b>140</b>	<b>0</b>	<b>10</b>	<b>265</b>	<b>395</b>	<b>75</b>	<b>190</b>	<b>90</b>	<b>35</b>	<b>55</b>	<b>265</b>	<b>145</b>	<b>25</b>	<b>110</b>	<b>65</b>	<b>130</b>	<b>2,040</b>
West Lothian	0 - 49	135	0	250	5	15	540	685	220	290	455	50	120	775	320	45	175	110	205	4,390
	50 - 249	0	0	30	0	5	15	75	15	5	5	0	5	15	20	5	15	5	0	220
	250+	0	5	30	0	5	20	195	20	30	15	15	5	10	55	5	30	10	10	455
	<b>Total</b>	<b>140</b>	<b>5</b>	<b>315</b>	<b>5</b>	<b>25</b>	<b>575</b>	<b>950</b>	<b>255</b>	<b>325</b>	<b>475</b>	<b>65</b>	<b>130</b>	<b>800</b>	<b>395</b>	<b>55</b>	<b>215</b>	<b>125</b>	<b>215</b>	<b>5,065</b>
<b>Scotland Total<sup>6</sup></b>	0 - 49	<b>17,345</b>	<b>205</b>	<b>8,200</b>	<b>590</b>	<b>425</b>	<b>18,740</b>	<b>23,285</b>	<b>5,070</b>	<b>12,890</b>	<b>9,730</b>	<b>2,025</b>	<b>5,285</b>	<b>32,075</b>	<b>11,570</b>	<b>1,780</b>	<b>6,260</b>	<b>3,865</b>	<b>8,370</b>	<b>167,710</b>
	50 - 249	<b>35</b>	<b>25</b>	<b>590</b>	<b>5</b>	<b>35</b>	<b>310</b>	<b>645</b>	<b>225</b>	<b>315</b>	<b>140</b>	<b>80</b>	<b>95</b>	<b>375</b>	<b>330</b>	<b>85</b>	<b>410</b>	<b>120</b>	<b>105</b>	<b>3,920</b>
	250+	<b>15</b>	<b>45</b>	<b>250</b>	<b>15</b>	<b>20</b>	<b>120</b>	<b>510</b>	<b>160</b>	<b>190</b>	<b>95</b>	<b>130</b>	<b>45</b>	<b>215</b>	<b>275</b>	<b>55</b>	<b>155</b>	<b>60</b>	<b>45</b>	<b>2,365</b>
	<b>Total</b>	<b>17,390</b>	<b>275</b>	<b>9,040</b>	<b>605</b>	<b>480</b>	<b>19,175</b>	<b>24,440</b>	<b>5,455</b>	<b>13,355</b>	<b>9,965</b>	<b>2,235</b>	<b>5,420</b>	<b>32,665</b>	<b>12,175</b>	<b>1,920</b>	<b>6,825</b>	<b>4,045</b>	<b>8,520</b>	<b>173,995</b>

Note: Totals may not equal the sum of the constituent parts due to rounding.

Source: Scottish Government, ONS (IDBR)

1. Excludes central and local government.
2. Colleges of Further Education were reclassified as Central Government entities on 13 October 2010, transferring FE Colleges (and any associated employers/turnover) from the private/business sector to the public sector. This change has not been applied to historical data, and therefore represents a step change in the 2011 results compared to data for earlier years.
3. Includes June 2002 LA boundary changes between The City of Edinburgh & West Lothian and Glasgow City & Renfrewshire.
4. For more information on Standard Industrial Classification 2007 - please click here.
5. Each enterprise is counted once in each local authority it operates in. The sum of the local authority enterprises do not equal the overall Scotland totals because each enterprise is only counted once in the Scotland figures.
6. Sizeband is based on the number of employees that the enterprise employs across the UK.

For more information on Definitions and Methodology - please click here

**Table 7: Number of registered enterprises<sup>1</sup> in Scotland and their total Scottish employment and turnover<sup>2</sup> by Local Authority area<sup>3</sup> and sector<sup>4</sup>  
March 2016**

Local Authority area	A, B, D, E Primary Industries			C Manufacturing			F Construction			G Wholesale, retail and repairs			H Transport and storage			I Accommodation and food service activities			J Information and communication		
	Number of enterprises	Total Scottish employment	Turnover (£ millions)	Number of enterprises	Total Scottish employment	Turnover (£ millions)	Number of enterprises	Total Scottish employment	Turnover (£ millions)	Number of enterprises	Total Scottish employment	Turnover (£ millions)	Number of enterprises	Total Scottish employment	Turnover (£ millions)	Number of enterprises	Total Scottish employment	Turnover (£ millions)	Number of enterprises	Total Scottish employment	Turnover (£ millions)
Aberdeen City	240	28,040	23,892	485	12,170	3,080	645	6,670	712	1,185	20,150	6,097	310	8,530	2,209	540	12,770	602	455	3,360	525
Aberdeenshire	3,190	14,590	4,674	740	14,120	2,687	1,445	8,270	1,233	1,375	15,270	2,821	360	3,550	588	600	6,990	238	400	1,120	159
Argyll and Bute	725	3,840	377	230	4,610	1,000	470	2,060	209	615	5,880	946	135	1,290	117	295	2,720	103	85	180	15
Argyll and Bute	895	2,960	770	185	3,080	476	385	2,000	169	665	4,640	603	115	1,480	126	475	5,170	191	110	340	28
City of Edinburgh	245	3,870	1,637	540	7,210	1,733	1,440	7,700	1,895	2,455	40,990	7,123	305	10,450	1,386	1,660	28,840	1,285	2,395	11,930	2,495
Clackmannanshire	60	300	45	90	2,150	585	155	940	92	235	2,300	293	45	320	26	115	1,070	38	60	130	10
Dumfries and Galloway	2,135	6,950	901	320	6,420	1,357	635	3,030	284	1,000	10,520	1,676	225	2,670	357	580	5,740	208	105	520	55
Dumfries and Galloway	40	440	263	225	4,890	1,087	390	2,630	248	825	12,150	1,791	105	1,660	119	365	4,900	170	175	2,800	363
East Ayrshire	485	1,960	443	215	2,980	390	375	1,750	191	625	6,130	863	140	1,350	117	255	2,070	69	105	290	25
East Dunbartonshire	70	560	236	145	1,600	226	400	1,570	177	465	5,050	719	80	470	32	165	1,650	61	240	860	120
East Lothian	335	2,370	598	140	1,730	289	385	1,620	199	475	3,700	550	85	650	47	245	2,770	101	230	400	35
East Renfrewshire	75	270	19	105	670	85	285	1,490	208	410	3,540	487	55	690	42	135	1,490	51	230	380	26
Falkirk	155	1,330	690	255	7,670	1,548	470	3,690	444	780	10,720	2,700	210	2,880	357	290	3,290	104	265	570	65
Fife	695	5,130	1,509	675	15,160	4,403	1,140	7,610	1,045	1,625	21,960	3,786	295	3,410	261	810	9,240	338	515	3,900	223
Glasgow City	135	4,430	3,922	880	17,350	3,113	1,610	15,220	2,374	3,440	49,240	8,554	435	10,600	1,734	1,685	27,170	1,094	1,550	15,260	6,576
Highland	2,335	7,170	1,992	565	7,020	1,294	1,485	7,210	876	1,510	16,970	2,900	360	4,550	408	1,085	12,690	478	255	2,140	303
Inverclyde	50	150	*	95	1,650	188	175	520	66	365	4,720	1,194	55	940	120	160	1,700	52	85	*	*
Midlothian	145	650	63	150	1,850	182	350	3,130	359	410	5,700	881	75	630	61	155	1,500	52	175	440	34
Moray	675	2,290	316	190	6,230	1,217	445	2,610	298	565	5,900	910	105	1,310	110	270	2,660	80	85	290	33
Na h-Eileanan Siar	320	810	134	80	540	68	105	750	52	175	1,460	211	50	550	58	105	1,010	30	45	250	86
North Ayrshire	270	1,660	432	225	4,260	904	420	2,090	227	615	7,010	1,217	125	1,300	128	350	3,450	120	110	340	39
North Lanarkshire	205	4,100	3,476	530	11,570	2,757	1,190	11,000	1,612	1,450	20,460	3,346	570	7,700	816	595	5,780	209	400	2,400	312
Orkney Islands	720	1,900	243	50	360	47	135	800	52	175	1,480	196	50	670	45	75	920	33	20	*	8
Perth and Kinross	1,060	8,680	*	300	3,920	650	740	4,050	528	1,030	10,690	1,822	170	2,020	166	535	7,570	345	245	600	*
Renfrewshire	155	1,170	166	340	8,860	2,272	630	4,780	773	925	14,400	3,040	245	5,710	963	340	5,090	227	220	1,250	140
Scottish Borders	1,285	4,690	588	260	4,830	443	610	2,540	253	795	7,140	1,120	125	1,000	80	375	3,100	113	190	490	43
Shetland Islands	600	1,790	667	75	850	116	150	1,510	150	160	1,620	262	125	970	157	80	1,280	116	20	*	15
South Ayrshire	450	1,550	192	180	4,550	1,420	425	1,950	227	750	8,440	2,057	125	2,330	318	330	4,900	190	135	420	52
South Lanarkshire	695	7,110	3,735	625	11,390	1,532	1,190	8,570	982	1,640	20,040	3,698	465	4,820	424	630	6,730	257	500	1,600	158
Stirling	420	1,430	213	165	2,590	467	415	2,230	440	695	7,700	1,563	110	1,130	88	360	4,760	182	265	1,240	111
West Dunbartonshire	60	280	37	140	2,390	639	265	1,120	105	395	4,710	691	75	720	181	190	2,590	93	90	*	54
West Lothian	175	1,130	243	315	7,440	1,301	575	4,960	595	950	15,760	3,089	255	3,450	302	325	3,730	140	475	8,320	364
<b>Scottish Total<sup>5</sup></b>	<b>18,755</b>	<b>123,570</b>	<b>60,164</b>	<b>9,040</b>	<b>182,090</b>	<b>37,556</b>	<b>19,175</b>	<b>126,090</b>	<b>17,073</b>	<b>24,440</b>	<b>366,420</b>	<b>67,207</b>	<b>5,455</b>	<b>89,770</b>	<b>11,945</b>	<b>13,355</b>	<b>185,340</b>	<b>7,369</b>	<b>9,965</b>	<b>63,860</b>	<b>12,957</b>

Note: Totals may not equal the sum of the constituent parts due to rounding.

\* not available due to confidentiality constraints

1. Excludes central and local government.

2. Turnover for financial and insurance activities enterprises are not available on a comparable basis. Totals exclude turnover of such enterprises.

3. Includes June 2002 LA boundary changes between The City of Edinburgh & West Lothian and Glasgow City & Renfrewshire.

4. For more information on Standard Industrial Classification 2007 - please click here.

5. Each enterprise is counted once in each local authority it operates in. The sum of the local authority enterprises do not equal the overall Scotland totals because each enterprise is only counted once in the Scotland figures.

Note that only enterprises are double-counted in these tables – each enterprise's employment and turnover are accurately assigned to the local authorities they operate in therefore the sum of these columns do correspond to the Scotland totals.

For more information on Definitions and Methodology - please click here

K Financial and insurance activities <sup>2</sup>			L Real estate activities			M Professional, scientific and technical activities			N Administrative and support service activities			P, Q Education, human health and social work activities			R Arts, entertainment and recreation			S Other service activities			Total		
Number of enterprises	Total Scottish employment	Turnover (£ millions)	Number of enterprises	Total Scottish employment	Turnover (£ millions)	Number of enterprises	Total Scottish employment	Turnover (£ millions)	Number of enterprises	Total Scottish employment	Turnover (£ millions)	Number of enterprises	Total Scottish employment	Turnover (£ millions)	Number of enterprises	Total Scottish employment	Turnover (£ millions)	Number of enterprises	Total Scottish employment	Turnover (£ millions)	Number of enterprises	Total Scottish employment	Turnover (£ millions)
120	1,610	NA	320	1,920	196	3,845	21,850	4,720	895	12,920	1,937	470	14,930	725	120	2,860	436	405	2,390	168	10,040	150,160	45,299
70	700	NA	245	920	113	3,980	12,290	3,532	1,010	5,340	679	455	6,980	277	190	1,630	145	420	1,630	104	14,485	93,540	17,251
25	250	NA	100	330	26	750	2,260	405	265	1,280	155	200	3,150	137	85	860	84	180	720	22	4,155	29,450	3,595
25	230	NA	100	580	40	405	1,460	108	225	1,310	154	205	3,020	129	120	970	82	160	620	24	4,070	27,850	2,900
615	36,160	NA	855	5,360	717	4,480	24,230	2,782	1,505	24,430	1,850	1,280	41,470	1,628	555	7,400	849	960	6,030	368	19,285	256,090	25,750
15	100	NA	30	150	9	195	490	37	100	440	25	80	2,270	55	35	330	56	70	250	8	1,285	11,240	1,278
55	530	NA	115	840	104	445	2,300	191	365	2,300	198	320	5,680	238	135	860	129	270	1,070	42	6,705	49,400	5,740
80	1,270	NA	170	930	116	510	3,350	202	235	3,110	210	285	10,260	313	85	1,970	255	265	1,460	49	3,760	51,810	5,185
45	490	NA	75	220	10	415	1,510	115	225	3,690	203	165	1,010	148	80	3,910	158	200	690	32	3,405	28,060	2,763
50	11,130	NA	125	390	27	710	1,540	107	215	1,200	83	220	3,950	135	90	1,030	106	185	740	29	3,160	21,720	2,058
50	320	NA	85	300	25	540	2,200	214	250	1,210	192	215	3,910	154	115	1,440	137	120	500	19	3,260	23,120	2,560
50	260	NA	135	360	29	600	1,110	84	210	1,100	99	195	2,860	110	85	570	89	165	610	26	2,730	15,410	1,356
60	590	NA	85	500	32	775	2,530	209	300	4,520	361	225	3,840	142	85	1,290	241	245	1,040	49	4,195	44,460	6,942
105	3,540	NA	225	1,040	79	1,885	5,590	437	670	5,170	491	530	13,750	445	250	3,320	462	535	3,600	146	9,760	102,400	13,625
480	20,250	NA	955	7,980	965	3,445	27,860	2,635	1,360	53,530	2,891	1,365	42,470	1,367	495	10,190	2,178	1,080	7,050	385	18,910	308,600	37,787
80	860	NA	320	1,260	116	1,465	4,940	401	770	4,980	468	520	9,320	366	285	2,690	219	420	1,680	72	11,485	83,460	9,915
30	*	NA	65	580	63	360	930	60	115	2,760	142	150	3,380	100	45	800	143	110	470	22	1,860	21,150	2,589
40	250	NA	60	460	33	395	1,890	173	205	920	68	140	3,490	144	75	510	100	130	750	41	2,495	22,160	2,191
40	350	NA	80	350	52	450	1,320	87	210	1,370	127	165	2,930	109	70	680	52	140	580	19	3,485	28,860	3,410
10	80	NA	15	150	12	115	390	39	70	220	16	65	680	33	25	100	2	45	140	8	1,230	7,120	750
40	370	NA	80	370	31	555	1,660	193	230	2,060	168	175	3,880	134	105	1,030	194	185	740	32	3,480	30,200	3,819
125	1,930	NA	195	790	82	1,080	4,090	401	595	10,080	973	395	8,250	279	150	3,190	606	435	1,610	68	7,910	92,940	14,939
10	*	NA	15	90	7	100	530	40	70	290	28	45	410	15	30	190	7	40	140	6	1,530	7,940	727
80	1,600	NA	205	970	78	870	2,710	192	475	2,880	255	330	5,520	228	180	2,090	109	270	1,340	63	6,485	54,630	12,177
85	680	NA	140	810	95	850	3,900	383	375	7,540	442	295	9,540	252	115	1,660	261	300	1,650	194	5,015	67,040	9,209
45	350	NA	130	820	73	605	2,170	176	330	1,580	171	235	3,340	171	155	1,460	78	190	650	45	5,330	34,140	3,272
10	*	NA	20	70	9	155	770	94	80	720	63	50	410	18	20	370	8	50	220	7	1,530	10,830	1,682
65	560	NA	135	480	34	515	1,770	124	245	1,230	146	205	5,110	168	115	1,250	228	215	800	33	3,885	35,230	5,189
145	2,920	NA	235	960	53	1,370	4,650	434	650	7,230	476	465	9,000	320	190	3,020	524	480	1,910	79	9,285	89,350	12,671
75	2,040	NA	170	650	52	775	2,440	214	305	4,050	293	250	5,570	222	85	990	94	190	710	34	4,275	37,520	3,973
35	*	NA	55	260	19	265	810	129	145	1,030	70	135	2,500	105	65	690	125	130	550	24	2,040	20,130	2,271
65	720	NA	130	580	28	800	3,700	354	395	5,690	396	270	4,750	173	125	1,480	191	215	930	36	5,065	62,640	7,214
<b>2,235</b>	<b>83,550</b>	<b>NA</b>	<b>5,420</b>	<b>31,440</b>	<b>3,322</b>	<b>32,665</b>	<b>149,230</b>	<b>19,275</b>	<b>12,175</b>	<b>176,120</b>	<b>13,771</b>	<b>8,745</b>	<b>240,500</b>	<b>8,842</b>	<b>4,045</b>	<b>58,080</b>	<b>8,348</b>	<b>8,520</b>	<b>43,260</b>	<b>2,255</b>	<b>173,995</b>	<b>1,919,230</b>	<b>270,086</b>

Source: Scottish Government, ONS (IDBR)

**Table 8: Number of business sites<sup>1,2</sup> of registered enterprises by Local Authority area<sup>3</sup>, sector<sup>4</sup> and employee sizeband<sup>5</sup> of site March 2016**

Local Authority	Employee Sizeband	A, B, D, E Primary Industries	C Manufacturing	F Construction	G Wholesale and retail trade; Repair of motor vehicles and motorcycles	H Transportation and storage	I Accommodation and food service activities	J Information and communication	K Financial and insurance activities	L Real estate activities	M Professional, scientific and technical activities	N Administrative and support service activities	P, Q Education, human health and social work activities	R Arts, entertainment and recreation	S Other service activities	Total
Aberdeen City	0-4 employees	155	245	505	705	185	270	370	85	270	3,425	725	275	105	305	7,625
	5-9 employees	25	80	60	335	50	130	35	40	40	180	135	125	50	80	1,375
	10-14 employees	10	45	40	190	30	100	25	70	15	105	55	70	10	20	725
	15-49 employees	25	85	45	235	60	215	35	25	15	160	100	120	20	30	1,170
	50+ employees	55	55	20	65	45	45	15	5	5	80	55	50	15	5	510
	Total	270	510	670	1,530	370	765	475	170	345	3,950	1,070	640	200	440	11,405
Aberdeenshire	0-4 employees	2,850	515	1,170	970	255	265	375	65	230	3,795	895	270	115	335	12,115
	5-9 employees	230	80	160	345	40	175	30	30	20	120	80	115	35	70	1,545
	10-14 employees	80	45	35	140	35	75	10	5	10	60	30	60	25	15	620
	15-49 employees	50	95	70	155	50	115	5	5	5	50	45	90	30	10	780
	50+ employees	25	55	25	40	15	15	0	0	5	20	15	30	5	0	245
	Total	3,235	795	1,460	1,645	395	645	420	115	270	4,045	1,070	560	215	430	15,305
Angus	0-4 employees	605	140	385	460	95	150	85	20	90	705	240	105	45	150	3,280
	5-9 employees	85	25	55	160	25	90	5	20	10	35	25	35	20	30	620
	10-14 employees	25	20	15	60	10	25	0	5	0	15	5	35	5	5	220
	15-49 employees	10	25	15	65	20	45	0	0	0	10	10	40	20	0	270
	50+ employees	10	25	5	10	5	5	0	0	0	5	0	15	0	0	80
	Total	735	240	475	755	150	310	95	45	105	770	280	230	95	185	4,470
Argyll and Bute	0-4 employees	865	150	310	535	100	235	110	30	95	360	200	120	100	130	3,340
	5-9 employees	60	15	45	140	20	120	5	15	15	35	15	60	20	20	595
	10-14 employees	20	10	15	60	10	60	0	5	5	10	10	30	10	5	250
	15-49 employees	10	15	20	30	5	80	5	0	5	5	10	40	15	5	275
	50+ employees	0	5	5	10	5	10	0	0	0	0	5	15	0	0	55
	Total	960	200	395	770	165	505	120	50	120	415	245	265	145	160	4,515
City of Edinburgh	0-4 employees	195	365	1,150	1,900	220	815	2,160	480	705	3,825	1,205	725	445	705	14,890
	5-9 employees	30	80	180	750	45	495	125	95	350	230	335	110	180	180	3,130
	10-14 employees	5	35	60	250	35	280	55	40	50	120	85	165	50	70	1,305
	15-49 employees	10	40	80	375	35	410	85	80	50	210	105	300	60	70	1,910
	50+ employees	10	25	20	100	45	100	40	65	15	95	65	105	30	10	720
	Total	250	540	1,490	3,375	380	2,100	2,465	795	910	4,595	1,695	1,625	695	1,035	21,955
Clackmannanshire	0-4 employees	55	60	125	145	35	60	55	5	30	185	80	40	20	60	950
	5-9 employees	5	15	5	60	5	25	5	5	5	5	15	10	10	5	185
	10-14 employees	0	5	10	30	0	20	0	5	0	5	0	10	0	0	85
	15-49 employees	5	20	5	10	0	5	0	0	0	5	0	15	5	5	95
	50+ employees	0	5	0	5	0	5	0	0	0	0	0	5	0	0	35
	Total	65	90	155	260	50	125	60	15	40	200	100	85	40	70	1,355
Dumfries and Galloway	0-4 employees	1,940	205	500	705	175	315	90	50	105	395	320	180	110	225	5,315
	5-9 employees	155	45	85	285	35	125	10	25	20	55	35	100	30	45	1,050
	10-14 employees	50	15	25	110	15	70	5	5	0	10	10	60	10	10	395
	15-49 employees	25	35	30	110	20	85	5	5	10	20	15	60	10	5	440
	50+ employees	0	30	5	20	10	10	0	0	5	0	5	25	0	0	120
	Total	2,170	330	650	1,225	250	610	115	90	140	480	385	435	160	280	7,315
Dundee City	0-4 employees	30	140	310	560	75	185	130	60	160	415	180	120	75	220	2,660
	5-9 employees	5	30	35	230	30	95	25	20	20	60	40	70	35	50	720
	10-14 employees	5	15	25	90	5	45	5	5	5	15	10	50	10	15	305
	15-49 employees	5	20	25	105	10	85	15	15	10	30	25	80	10	5	435
	50+ employees	0	25	10	40	10	15	5	5	0	5	15	30	10	0	175
	Total	45	230	400	1,025	110	420	185	105	195	525	270	355	140	290	4,290
East Ayrshire	0-4 employees	445	150	310	410	110	155	95	30	65	355	170	70	50	175	2,595
	5-9 employees	25	25	35	165	15	60	5	10	5	30	35	50	30	25	520
	10-14 employees	5	10	10	75	5	25	5	5	0	20	15	20	5	0	195
	15-49 employees	10	20	20	50	10	20	0	5	0	15	15	35	10	0	215
	50+ employees	5	15	5	15	5	5	0	5	0	0	0	20	5	0	90
	Total	495	220	380	715	145	260	105	55	75	420	245	195	100	205	3,615
East Dunbartonshire	0-4 employees	60	95	330	350	70	65	225	35	105	675	180	125	65	155	2,535
	5-9 employees	5	20	45	90	15	55	15	15	15	30	25	50	20	25	425
	10-14 employees	0	5	15	35	0	20	0	5	5	5	5	30	5	10	145
	15-49 employees	5	20	20	45	5	25	0	5	5	0	5	40	15	5	195
	50+ employees	0	5	0	20	0	5	0	0	0	0	0	20	5	0	60
	Total	75	145	410	530	95	175	245	60	130	715	220	260	110	195	3,365
East Lothian	0-4 employees	280	95	325	365	60	110	225	40	70	505	210	105	80	105	2,575
	5-9 employees	40	15	40	100	15	75	5	10	5	25	25	55	20	15	440
	10-14 employees	10	15	10	40	5	25	0	5	5	10	5	20	10	10	170
	15-49 employees	15	10	15	40	5	40	0	5	5	10	10	35	15	5	215
	50+ employees	0	5	10	5	0	5	0	0	0	0	0	15	0	0	55
	Total	340	145	390	550	95	255	230	65	85	550	255	135	130	130	3,455
East Renfrewshire	0-4 employees	65	80	240	285	40	65	220	45	125	575	190	115	60	140	2,250
	5-9 employees	5	10	25	100	5	35	10	10	10	20	15	45	15	25	320
	10-14 employees	0	5	5	35	0	20	0	0	5	5	10	25	5	5	125
	15-49 employees	5	5	10	20	10	20	0	5	0	5	10	25	5	5	125
	50+ employees	0	0	5	10	5	5	0	0	0	0	0	15	0	0	45
	Total	75	100	290	445	60	140	230	65	140	605	220	225	90	175	2,865

Local Authority	Employee Sizeband	A, B, D, E Primary Industries	C Manufacturing	F Construction	G Wholesale and retail trade; Repair of motor vehicles and motorcycles	H Transportation and storage	I Accommodation and food service activities	J Information and communication	K Financial and insurance activities	L Real estate activities	M Professional, scientific and technical activities	N Administrative and support service activities	P, Q Education, human health and social work activities	R Arts, entertainment and recreation	S Other service activities	Total
Falkirk	0-4 employees	135	150	385	495	145	150	260	50	70	705	230	105	60	190	3,135
	5-9 employees	10	40	45	200	25	90	5	15	10	40	50	40	40	45	655
	10-14 employees	0	20	10	30	10	30	5	0	5	20	25	35	10	10	260
	15-49 employees	5	25	20	90	30	40	0	10	5	25	20	55	10	5	340
	50+ employees	5	30	15	35	15	10	0	0	0	15	0	20	0	0	145
	<b>Total</b>	<b>155</b>	<b>265</b>	<b>475</b>	<b>895</b>	<b>225</b>	<b>320</b>	<b>270</b>	<b>80</b>	<b>90</b>	<b>790</b>	<b>340</b>	<b>255</b>	<b>120</b>	<b>250</b>	<b>4,535</b>
Fife	0-4 employees	605	430	930	1,245	240	455	485	100	195	1,530	570	280	175	440	7,670
	5-9 employees	60	100	125	450	45	200	25	40	25	105	90	155	80	80	1,570
	10-14 employees	30	35	50	200	20	90	10	15	15	40	30	80	25	25	665
	15-49 employees	35	80	50	210	25	135	15	15	15	45	25	140	40	20	850
	50+ employees	5	60	15	20	5	15	0	5	0	15	25	35	10	5	265
	<b>Total</b>	<b>735</b>	<b>705</b>	<b>1,165</b>	<b>2,150</b>	<b>345</b>	<b>895</b>	<b>540</b>	<b>170</b>	<b>255</b>	<b>1,735</b>	<b>740</b>	<b>690</b>	<b>330</b>	<b>570</b>	<b>11,020</b>
Glasgow City	0-4 employees	90	565	1,225	2,480	365	855	1,315	355	795	2,700	1,065	700	430	865	13,810
	5-9 employees	20	120	180	1,045	65	440	115	130	175	400	225	450	240	195	3,795
	10-14 employees	10	60	70	390	30	250	55	60	75	150	100	230	45	50	1,575
	15-49 employees	15	90	135	445	45	395	85	80	85	215	130	280	75	65	2,140
	50+ employees	20	75	50	150	45	85	40	55	25	105	120	115	35	20	945
	<b>Total</b>	<b>155</b>	<b>905</b>	<b>1,665</b>	<b>4,515</b>	<b>545</b>	<b>2,025</b>	<b>1,610</b>	<b>685</b>	<b>1,150</b>	<b>3,570</b>	<b>1,640</b>	<b>1,775</b>	<b>825</b>	<b>1,200</b>	<b>22,265</b>
Highland	0-4 employees	2,220	430	1,235	1,150	310	535	230	75	280	1,320	675	360	205	335	9,360
	5-9 employees	115	65	145	430	75	305	30	45	35	115	70	130	60	85	1,705
	10-14 employees	45	35	60	165	30	130	10	30	45	20	40	70	20	15	665
	15-49 employees	35	40	65	175	45	200	10	10	15	50	40	95	30	10	815
	50+ employees	5	35	15	40	15	25	10	5	0	15	15	35	10	0	225
	<b>Total</b>	<b>2,425</b>	<b>600</b>	<b>1,520</b>	<b>1,960</b>	<b>480</b>	<b>1,195</b>	<b>290</b>	<b>140</b>	<b>340</b>	<b>1,545</b>	<b>820</b>	<b>690</b>	<b>325</b>	<b>440</b>	<b>12,770</b>
Inverclyde	0-4 employees	45	70	160	265	45	75	70	25	55	335	85	70	25	90	1,410
	5-9 employees	5	10	10	80	10	50	10	10	10	20	20	40	20	15	310
	10-14 employees	5	5	0	30	0	20	0	0	5	5	5	20	10	10	115
	15-49 employees	0	5	0	35	5	30	5	5	5	5	5	30	10	5	145
	50+ employees	0	10	0	5	5	5	0	5	0	5	5	20	0	0	70
	<b>Total</b>	<b>50</b>	<b>100</b>	<b>175</b>	<b>430</b>	<b>65</b>	<b>170</b>	<b>90</b>	<b>40</b>	<b>75</b>	<b>370</b>	<b>125</b>	<b>180</b>	<b>65</b>	<b>115</b>	<b>2,050</b>
Midlothian	0-4 employees	115	90	250	280	60	75	160	40	50	330	170	70	50	100	1,840
	5-9 employees	15	20	40	90	10	45	10	5	0	35	25	30	20	15	360
	10-14 employees	5	10	25	30	0	25	0	5	5	15	10	20	10	5	170
	15-49 employees	5	20	25	45	20	20	5	25	0	25	5	40	5	5	215
	50+ employees	0	5	10	15	5	5	0	0	0	5	0	10	0	0	60
	<b>Total</b>	<b>140</b>	<b>145</b>	<b>350</b>	<b>465</b>	<b>85</b>	<b>165</b>	<b>180</b>	<b>55</b>	<b>60</b>	<b>410</b>	<b>210</b>	<b>165</b>	<b>85</b>	<b>130</b>	<b>2,640</b>
Moray	0-4 employees	620	115	360	390	75	135	75	25	65	415	185	90	45	115	2,705
	5-9 employees	60	35	45	140	15	70	10	15	15	20	15	40	15	20	520
	10-14 employees	15	30	20	55	5	30	5	5	5	15	10	20	5	5	215
	15-49 employees	15	35	25	65	20	40	0	5	5	10	15	40	10	5	290
	50+ employees	0	20	5	15	5	5	0	0	0	0	0	15	0	0	65
	<b>Total</b>	<b>710</b>	<b>235</b>	<b>450</b>	<b>665</b>	<b>120</b>	<b>285</b>	<b>90</b>	<b>55</b>	<b>85</b>	<b>465</b>	<b>225</b>	<b>200</b>	<b>80</b>	<b>145</b>	<b>3,800</b>
Na h-Eileanan Siar	0-4 employees	320	65	80	120	55	55	40	10	10	105	65	35	20	35	1,005
	5-9 employees	15	5	5	35	15	30	0	5	5	5	5	15	5	10	175
	10-14 employees	5	0	5	15	5	10	0	5	10	5	5	10	0	0	65
	15-49 employees	5	10	10	20	5	20	5	0	0	0	0	10	5	0	95
	50+ employees	0	5	0	0	0	0	0	0	0	0	0	0	0	0	10
	<b>Total</b>	<b>345</b>	<b>85</b>	<b>110</b>	<b>200</b>	<b>80</b>	<b>115</b>	<b>45</b>	<b>15</b>	<b>20</b>	<b>115</b>	<b>75</b>	<b>75</b>	<b>25</b>	<b>45</b>	<b>1,350</b>
North Ayrshire	0-4 employees	245	145	355	425	100	180	105	30	80	515	185	90	75	160	2,695
	5-9 employees	15	30	35	150	10	105	10	15	5	35	30	40	40	25	540
	10-14 employees	5	15	10	85	10	30	0	5	5	10	10	25	5	10	230
	15-49 employees	10	20	15	55	20	35	0	5	0	5	10	45	20	5	250
	50+ employees	5	10	5	20	0	10	0	0	0	5	0	20	0	0	95
	<b>Total</b>	<b>275</b>	<b>230</b>	<b>425</b>	<b>735</b>	<b>145</b>	<b>365</b>	<b>115</b>	<b>60</b>	<b>90</b>	<b>565</b>	<b>245</b>	<b>140</b>	<b>195</b>	<b>3,805</b>	
North Lanarkshire	0-4 employees	155	300	915	1,025	435	380	355	125	170	950	460	175	120	440	6,005
	5-9 employees	20	75	130	135	60	335	30	30	65	30	75	120	100	70	1,285
	10-14 employees	10	40	55	150	30	65	10	5	10	30	40	45	20	10	520
	15-49 employees	15	75	70	180	60	70	15	20	10	40	55	65	40	10	725
	50+ employees	10	50	50	55	45	15	10	5	0	10	30	45	5	0	335
	<b>Total</b>	<b>215</b>	<b>545</b>	<b>1,220</b>	<b>1,765</b>	<b>635</b>	<b>660</b>	<b>410</b>	<b>190</b>	<b>210</b>	<b>1,095</b>	<b>655</b>	<b>455</b>	<b>280</b>	<b>530</b>	<b>8,870</b>
Orkney Islands	0-4 employees	700	30	105	105	50	30	20	0	10	80	60	25	20	35	1,280
	5-9 employees	20	15	15	45	10	15	0	5	5	10	5	10	5	5	160
	10-14 employees	0	0	5	20	0	5	0	0	0	5	5	5	0	0	60
	15-49 employees	0	5	15	10	0	20	0	0	0	10	5	10	0	0	95
	50+ employees	0	0	0	0	0	0	0	0	0	0	0	0	0	0	10
	<b>Total</b>	<b>725</b>	<b>50</b>	<b>140</b>	<b>195</b>	<b>75</b>	<b>75</b>	<b>20</b>	<b>15</b>	<b>20</b>	<b>105</b>	<b>70</b>	<b>50</b>	<b>30</b>	<b>40</b>	<b>1,605</b>
Perth and Kinross	0-4 employees	940	215	585	730	135	260	225	60	175	785	395	160	140	215	5,015
	5-9 employees	85	30	105	265	25	125	20	25	35	60	45	80	35	35	960
	10-14 employees	30	15	25	95	10	70	5	5	25	15	25	40	10	15	375
	15-49 employees	25	35	30	95	20	95	5	10	10	25	30	75	20	5	475
	50+ employees	10	10	10	30	5	20	0	0	0	10	10	25	10	5	140
	<b>Total</b>	<b>1,090</b>	<b>305</b>	<b>755</b>	<b>1,215</b>	<b>200</b>	<b>565</b>	<b>250</b>	<b>100</b>	<b>225</b>	<b>895</b>	<b>500</b>	<b>375</b>	<b>210</b>	<b>275</b>	<b>6,960</b>
Renfrewshire	0-4 employees	140	190	470	610	135	175	200	65	120	745	290	145	80	235	3,595
	5-9 employees	5	55	75	230	45	95	15	20	25	65	50	70	35	45	825
	10-14 employees	5	25	30	85	5	45	5	5	5	20	20	40	5	20	330
	15-49 employees	10	40	40	125	40	75	10	25	10	25	25	50	25	10	510
	50+ employees	5	30	15	55	30	15	5	0	0	10	25	35	5	0	230
	<b>Total</b>	<b>160</b>	<b>350</b>	<b>635</b>	<b>1,100</b>	<b>275</b>	<b>400</b>	<b>235</b>	<b>105</b>	<b>160</b>	<b>860</b>	<b>405</b>	<b>345</b>	<b>155</b>	<b>310</b>	<b>5,490</b>

Local Authority	Employee Sizeband	A, B, D, E Primary Industries	C Manufacturing	F Construction	G Wholesale and retail trade; Repair of motor vehicles and motorcycles	H Transportation and storage	I Accommodation and food service activities	J Information and communication	K Financial and insurance activities	L Real estate activities	M Professional, scientific and technical activities	N Administrative and support service activities	P, Q Education, human health and social work activities	R Arts, entertainment and recreation	S Other service activities	Total
Scottish Borders	0-4 employees	1,150	170	505	600	95	215	180	45	120	545	295	155	115	155	4,355
	5-9 employees	105	35	70	185	20	85	10	20	15	50	30	60	30	25	740
	10-14 employees	25	15	15	75	5	45	5	5	5	15	5	15	10	5	250
	15-49 employees	15	30	25	80	15	35	5	5	10	15	10	35	20	0	295
	50+ employees	0	20	5	10	0	5	0	0	5	0	5	15	5	0	70
	<b>Total</b>	<b>1,300</b>	<b>270</b>	<b>620</b>	<b>950</b>	<b>140</b>	<b>380</b>	<b>200</b>	<b>75</b>	<b>145</b>	<b>630</b>	<b>345</b>	<b>285</b>	<b>180</b>	<b>190</b>	<b>5,705</b>
Shetland Islands	0-4 employees	570	55	115	85	50	35	15	5	20	130	60	20	15	35	1,210
	5-9 employees	30	10	20	45	10	15	0	5	0	15	10	15	5	10	200
	10-14 employees	15	10	0	25	5	15	0	0	0	5	5	5	5	0	90
	15-49 employees	5	10	15	20	15	25	0	0	0	5	5	5	0	5	120
	50+ employees	5	5	5	5	5	0	0	0	0	5	5	0	0	0	25
	<b>Total</b>	<b>625</b>	<b>85</b>	<b>155</b>	<b>180</b>	<b>85</b>	<b>95</b>	<b>25</b>	<b>10</b>	<b>20</b>	<b>160</b>	<b>85</b>	<b>50</b>	<b>30</b>	<b>50</b>	<b>1,645</b>
South Ayrshire	0-4 employees	415	110	335	520	100	155	125	50	120	440	200	100	80	180	2,930
	5-9 employees	25	20	35	195	15	90	15	20	15	45	25	40	40	25	615
	10-14 employees	5	10	20	90	5	45	0	0	5	20	20	25	5	10	265
	15-49 employees	5	15	20	80	15	55	5	10	5	15	10	40	15	5	290
	50+ employees	0	15	5	20	10	15	0	0	0	0	0	30	5	0	110
	<b>Total</b>	<b>455</b>	<b>175</b>	<b>430</b>	<b>905</b>	<b>140</b>	<b>365</b>	<b>140</b>	<b>85</b>	<b>145</b>	<b>525</b>	<b>260</b>	<b>235</b>	<b>140</b>	<b>220</b>	<b>4,215</b>
South Lanarkshire	0-4 employees	655	385	945	1,185	365	330	460	140	235	1,220	535	225	160	405	7,240
	5-9 employees	35	80	135	380	45	185	30	40	35	95	90	110	95	70	1,430
	10-14 employees	10	40	20	185	20	60	5	10	20	30	35	70	20	25	580
	15-49 employees	15	85	50	185	45	85	10	15	5	40	40	75	40	10	705
	50+ employees	5	45	25	55	15	20	5	0	0	10	25	45	10	0	270
	<b>Total</b>	<b>725</b>	<b>640</b>	<b>1,205</b>	<b>1,995</b>	<b>495</b>	<b>680</b>	<b>510</b>	<b>205</b>	<b>295</b>	<b>1,395</b>	<b>715</b>	<b>525</b>	<b>325</b>	<b>505</b>	<b>10,220</b>
Stirling	0-4 employees	390	105	335	450	90	160	240	60	145	700	250	120	60	155	3,260
	5-9 employees	20	20	40	185	15	85	10	20	15	60	35	65	15	35	620
	10-14 employees	10	10	20	60	5	55	5	5	5	15	10	20	5	5	230
	15-49 employees	5	15	20	80	15	80	10	10	5	20	15	45	15	5	330
	50+ employees	5	15	5	20	5	10	5	5	5	5	10	20	5	0	105
	<b>Total</b>	<b>430</b>	<b>165</b>	<b>415</b>	<b>795</b>	<b>130</b>	<b>390</b>	<b>270</b>	<b>95</b>	<b>175</b>	<b>795</b>	<b>320</b>	<b>270</b>	<b>100</b>	<b>195</b>	<b>4,545</b>
West Dunbartonshire	0-4 employees	55	95	220	240	65	100	85	20	50	235	120	60	40	105	1,480
	5-9 employees	5	15	30	115	10	50	5	15	10	20	20	35	25	15	370
	10-14 employees	0	10	5	45	0	15	0	5	5	10	10	25	0	10	150
	15-49 employees	0	20	10	60	10	30	5	5	5	5	10	25	10	5	200
	50+ employees	0	10	0	10	5	10	0	5	0	0	5	10	0	0	55
	<b>Total</b>	<b>60</b>	<b>145</b>	<b>265</b>	<b>465</b>	<b>90</b>	<b>205</b>	<b>95</b>	<b>50</b>	<b>65</b>	<b>270</b>	<b>165</b>	<b>160</b>	<b>80</b>	<b>135</b>	<b>2,250</b>
West Lothian	0-4 employees	150	170	435	570	195	190	435	55	105	720	285	145	85	180	3,715
	5-9 employees	25	45	70	255	30	85	20	20	15	40	60	75	35	35	805
	10-14 employees	5	25	30	110	10	25	10	10	0	25	25	45	10	10	335
	15-49 employees	15	40	25	145	25	50	15	5	10	25	40	50	25	5	475
	50+ employees	0	40	20	45	15	10	10	0	0	5	20	15	5	0	190
	<b>Total</b>	<b>195</b>	<b>315</b>	<b>580</b>	<b>1,125</b>	<b>280</b>	<b>355</b>	<b>485</b>	<b>90</b>	<b>135</b>	<b>820</b>	<b>430</b>	<b>330</b>	<b>155</b>	<b>230</b>	<b>5,520</b>
<b>Scotland</b>	<b>0-4 employees</b>	<b>17,255</b>	<b>6,120</b>	<b>15,595</b>	<b>20,340</b>	<b>4,540</b>	<b>7,230</b>	<b>9,235</b>	<b>2,295</b>	<b>4,905</b>	<b>29,720</b>	<b>10,775</b>	<b>5,385</b>	<b>3,270</b>	<b>7,180</b>	<b>143,840</b>
	<b>5-9 employees</b>	<b>1,370</b>	<b>1,260</b>	<b>2,160</b>	<b>7,635</b>	<b>835</b>	<b>3,775</b>	<b>620</b>	<b>820</b>	<b>745</b>	<b>2,240</b>	<b>1,650</b>	<b>2,690</b>	<b>1,335</b>	<b>1,435</b>	<b>28,570</b>
	<b>10-14 employees</b>	<b>440</b>	<b>635</b>	<b>775</b>	<b>3,110</b>	<b>390</b>	<b>1,825</b>	<b>240</b>	<b>270</b>	<b>275</b>	<b>890</b>	<b>645</b>	<b>1,420</b>	<b>370</b>	<b>395</b>	<b>11,680</b>
	<b>15-49 employees</b>	<b>410</b>	<b>1,105</b>	<b>1,020</b>	<b>3,460</b>	<b>735</b>	<b>2,685</b>	<b>370</b>	<b>385</b>	<b>310</b>	<b>1,125</b>	<b>850</b>	<b>2,095</b>	<b>630</b>	<b>315</b>	<b>15,485</b>
	<b>50+ employees</b>	<b>200</b>	<b>755</b>	<b>360</b>	<b>985</b>	<b>395</b>	<b>495</b>	<b>165</b>	<b>165</b>	<b>70</b>	<b>410</b>	<b>505</b>	<b>860</b>	<b>195</b>	<b>50</b>	<b>5,605</b>
	<b>Total</b>	<b>19,670</b>	<b>9,875</b>	<b>19,910</b>	<b>35,530</b>	<b>6,890</b>	<b>16,010</b>	<b>10,630</b>	<b>3,930</b>	<b>6,310</b>	<b>34,380</b>	<b>14,425</b>	<b>12,450</b>	<b>5,800</b>	<b>9,375</b>	<b>205,180</b>

Note: Totals may not equal the sum of the constituent parts due to rounding.

Source: Scottish Government, ONS (IDBR)

1. Excludes central and local government.
2. Colleges of Further Education were reclassified as Central Government entities on 13 October 2010, transferring FE Colleges (and any associated employment/turnover) from the private/business sector to the public sector. This change has not been applied to historical data, and therefore represents a step change in the results from 2011 onwards.
3. Includes June 2002 LA boundary changes between The City of Edinburgh & West Lothian and Glasgow City & Renfrewshire.
4. For more information on Standard Industrial Classification 2007 - please click here.
5. Sites are allocated a Sizeband by their total number of employees at that business site.

For more information on Definitions and Methodology - please click here



**Table 9: Number of enterprises<sup>1</sup> in Scotland by urban/rural classification<sup>2</sup> and employee sizeband and their total Scottish employment March 2016**

Urban/rural classification <sup>3</sup>	Employee Sizeband <sup>4</sup>	Number of enterprises	Total Scottish Employment
1 Large Urban Areas	0 employee	23,095	24,300
	1-4 employees	22,485	59,350
	5-9 employees	7,490	51,060
	10-19 employees	4,670	62,950
	20-49 employees	2,300	58,850
	50-249 employees	2,270	126,910
	250+ employees	1,860	558,060
	<b>Total</b>	<b>64,175</b>	<b>941,480</b>
2 Other Urban Areas	0 employee	13,700	14,640
	1-4 employees	15,555	42,730
	5-9 employees	5,180	35,530
	10-19 employees	3,110	41,540
	20-49 employees	1,655	41,120
	50-249 employees	1,365	73,460
	250+ employees	1,195	268,650
	<b>Total</b>	<b>41,760</b>	<b>517,680</b>
3 Accessible Small Towns	0 employee	4,740	5,180
	1-4 employees	5,010	13,860
	5-9 employees	1,460	10,040
	10-19 employees	760	9,780
	20-49 employees	415	9,210
	50-249 employees	355	13,930
	250+ employees	385	30,510
	<b>Total</b>	<b>13,125</b>	<b>92,500</b>
4 Remote Small Towns	0 employee	2,070	2,360
	1-4 employees	2,830	8,260
	5-9 employees	1,025	7,220
	10-19 employees	625	8,270
	20-49 employees	330	7,800
	50-249 employees	260	11,310
	250+ employees	240	19,130
	<b>Total</b>	<b>7,375</b>	<b>64,340</b>
5 Accessible Rural	0 employee	13,565	16,480
	1-4 employees	11,595	32,560
	5-9 employees	2,680	18,800
	10-19 employees	1,480	19,810
	20-49 employees	715	17,940
	50-249 employees	595	30,560
	250+ employees	520	60,680
	<b>Total</b>	<b>31,145</b>	<b>196,830</b>
6 Remote Rural	0 employee	9,660	12,280
	1-4 employees	7,610	21,820
	5-9 employees	1,895	13,500
	10-19 employees	1,005	13,370
	20-49 employees	435	11,360
	50-249 employees	290	12,110
	250+ employees	245	21,980
	<b>Total</b>	<b>21,145</b>	<b>106,410</b>
<b>Scotland<sup>3</sup></b>	<b>0 employee</b>	<b>66,825</b>	<b>75,230</b>
	<b>1-4 employees</b>	<b>64,985</b>	<b>178,570</b>
	<b>5-9 employees</b>	<b>19,520</b>	<b>136,150</b>
	<b>10-19 employees</b>	<b>11,275</b>	<b>155,710</b>
	<b>20-49 employees</b>	<b>5,105</b>	<b>146,280</b>
	<b>50-249 employees</b>	<b>3,920</b>	<b>268,280</b>
	<b>250+ employees</b>	<b>2,365</b>	<b>959,010</b>
	<b>Total</b>	<b>173,995</b>	<b>1,919,230</b>

Source: Scottish Government, ONS (IDBR)

Note: Enterprise counts rounded to the nearest five. Employment rounded to the nearest ten.

Totals may not equal the sum of the constituent parts due to rounding.

1. Excludes central and local government.

2. Urban/rural classification according to 2011-12 sixfold classification.

3. Counts of the number of enterprises operating within each urban/rural classification have been included.

These do not sum to the total for Scotland, as the same enterprise may operate in more than one type of area.

4. Sizeband is based on the number of employees that the enterprise employs across the UK.

**Table 10: Number of enterprises<sup>1</sup> in Scotland by urban/rural classification<sup>2</sup> and broad industry sector<sup>3</sup> and their total Scottish employment  
March 2016**

Urban/rural classification	A Agriculture, forestry and fishing		B, D, E Mining & quarrying; Utilities		C Manufacturing		F Construction		G Wholesale, retail and repair		H, J Transportation & storage; Information & communication		I Accommodation and food service activities	
	Number of enterprises	Total Scottish Employment	Number of enterprises	Total Scottish Employment	Number of enterprises	Total Scottish Employment	Number of enterprises	Total Scottish Employment	Number of enterprises	Total Scottish Employment	Number of enterprises	Total Scottish Employment	Number of enterprises	Total Scottish Employment
1 Large Urban Areas	370	1,480	405	41,550	3,020	58,240	6,050	48,310	9,540	162,190	7,130	80,610	5,130	85,390
2 Other Urban Areas	1,165	4,040	330	15,160	2,695	64,830	5,105	37,570	7,175	127,770	3,790	45,090	3,525	43,960
3 Accessible Small Towns	685	2,160	75	1,810	725	10,890	1,725	8,560	2,190	21,080	1,080	5,390	1,065	10,300
4 Remote Small Towns	490	1,870	55	590	415	5,970	885	4,480	1,480	16,030	430	5,190	825	9,780
5 Accessible Rural	7,595	26,350	355	6,270	1,605	31,760	3,465	17,350	3,260	25,440	2,185	11,430	1,410	17,690
6 Remote Rural	7,155	19,120	285	3,180	940	10,300	2,160	9,830	2,165	13,910	1,085	5,930	1,725	18,230
<b>Scotland<sup>4</sup></b>	<b>17,390</b>	<b>55,020</b>	<b>1,365</b>	<b>68,550</b>	<b>9,040</b>	<b>182,000</b>	<b>19,175</b>	<b>126,090</b>	<b>24,440</b>	<b>366,420</b>	<b>15,420</b>	<b>153,630</b>	<b>13,355</b>	<b>185,340</b>

Note: Totals may not equal the sum of the constituent parts due to rounding.

1. Excludes central and local government

2. Urban/rural classification according to 2011-12 sixfold classification

3. For more information on Standard Industrial Classification 2007 - please click here.

4. Counts of the number of enterprises operating within each urban/rural classification have been included. These do not sum to the total for Scotland, as the same enterprise may operate in more than one type of area.

K Financial & insurance activities		L Real estate activities		M Professional, scientific and technical activities		N Administrative & support service activities		P, Q Education; Human health & social work activities		R, S Arts, entertainment and recreation; Other service activities		Total	
Number of enterprises	Total Scottish Employment	Number of enterprises	Total Scottish Employment	Number of enterprises	Total Scottish Employment	Number of enterprises	Total Scottish Employment	Number of enterprises	Total Scottish Employment	Number of enterprises	Total Scottish Employment	Number of enterprises	Total Scottish Employment
1,370	65,280	2,745	18,340	14,400	86,170	4,815	112,820	4,055	132,510	5,145	48,600	<b>64,175</b>	<b>941,480</b>
565	14,310	1,245	6,680	7,310	32,040	2,840	36,920	2,495	61,590	3,520	27,720	<b>41,760</b>	<b>517,680</b>
125	980	300	1,290	2,615	8,010	875	4,730	715	11,750	950	5,550	<b>13,125</b>	<b>92,500</b>
70	1,000	170	840	1,045	3,710	450	3,010	445	8,280	615	3,610	<b>7,375</b>	<b>64,340</b>
170	1,650	675	2,220	5,580	13,570	2,275	13,830	1,045	19,070	1,515	10,200	<b>31,145</b>	<b>196,830</b>
60	340	410	2,080	2,215	5,720	1,225	4,820	675	7,300	1,050	5,660	<b>21,145</b>	<b>106,410</b>
<b>2,235</b>	<b>83,550</b>	<b>5,420</b>	<b>31,440</b>	<b>32,665</b>	<b>149,230</b>	<b>12,175</b>	<b>176,120</b>	<b>8,745</b>	<b>240,500</b>	<b>12,565</b>	<b>101,340</b>	<b>173,995</b>	<b>1,919,230</b>

Source : Scottish Government, ONS (IDBR)

**Table 11: Number of enterprises<sup>1,2</sup> in Scotland by urban/rural classification<sup>3</sup>, broad sector<sup>4</sup> and employee sizeband and their total Scottish employment and turnover<sup>5</sup> March 2016**

Please note that Table 11 was corrected on 16 November 2016

Sector	Employee Sizeband <sup>6</sup>	Rest of Scotland			Accessible Rural			Remote Rural			Scotland <sup>2</sup>		
		Number of Enterprises	Total Scottish Employment	Turnover (£ millions)	Number of Enterprises	Total Scottish Employment	Turnover (£ millions)	Number of Enterprises	Total Scottish Employment	Turnover (£ millions)	Number of Enterprises	Total Scottish Employment	Turnover (£ millions)
		0-49	2,665	7,730	1,155	7,565	22,990	2,157	7,140	17,240	1,253	17,345	47,960
A Agriculture, Forestry and Fishing (SIC: 01 - 03)	50-249	15	*	*	20	1,180	73	10	*	35	*	*	
	250+	10	*	*	10	2,180	384	5	*	15	*	*	
	Total	2,690	9,550	1,590	7,595	26,350	2,614	7,155	19,120	1,759	17,390	55,020	5,963
B, D, E Mining & quarrying; Utilities (SIC: 05 - 09, 35, 36 - 39)	0-49	670	3,820	4,189	300	*	246	260	*	106	1,220	5,930	4,541
	50-249	50	3,370	2,192	20	*	*	5	*	65	*	*	
	250+	70	51,910	43,600	35	*	*	20	*	80	*	*	
	Total	795	59,100	49,981	355	6,270	2,590	285	3,180	1,629	1,365	68,550	54,200
C Manufacturing (SIC: 10 - 33)	0-49	5,945	35,070	3,880	1,430	7,280	786	875	4,080	382	8,200	46,430	5,048
	50-249	510	39,620	6,941	105	7,020	1,556	35	1,630	323	590	48,270	8,820
	250+	220	65,250	17,447	70	17,460	5,091	25	4,590	1,151	250	87,300	23,688
	Total	6,675	139,940	28,267	1,605	31,760	7,433	940	10,300	1,856	9,040	182,000	37,556
F Construction (SIC: 41 - 43)	0-49	13,255	50,810	6,021	3,385	11,850	1,161	2,135	7,670	656	18,740	70,320	7,839
	50-249	270	18,680	2,405	55	*	*	15	*	310	22,720	3,003	
	250+	120	29,430	5,487	20	*	*	10	*	120	33,060	6,232	
	Total	13,645	98,920	13,913	3,465	17,350	2,226	2,160	9,830	935	19,175	126,090	17,073
G Wholesale and retail trade; repair of motor vehicles and motor cycle (SIC: 45 - 47)	0-49	18,340	88,460	14,702	3,060	13,060	2,287	2,060	8,790	989	23,285	110,310	17,978
	50-249	590	27,300	8,056	105	4,110	1,017	60	1,440	355	645	32,850	9,428
	250+	500	211,310	37,502	95	8,280	1,746	40	3,680	553	510	223,270	39,801
	Total	19,430	327,070	60,260	3,260	25,440	5,050	2,165	13,910	1,897	24,440	366,420	67,207
H, J Transportation & storage; Information and communication (SIC: 49 - 53, 58 - 63)	0-49	11,675	35,630	3,930	2,100	6,470	564	1,045	3,830	377	14,800	45,930	4,871
	50-249	335	17,030	2,484	35	1,570	199	15	460	80	365	19,050	2,762
	250+	245	83,620	16,489	50	3,390	598	20	1,640	182	260	88,560	17,269
	Total	12,255	136,270	22,903	2,185	11,430	1,360	1,085	5,930	639	15,420	153,630	24,902
I Accommodation and food service activities (SIC: 55 - 56)	0-49	9,960	72,680	2,525	1,310	10,200	354	1,660	12,640	454	12,890	95,520	3,334
	50-249	260	20,910	860	55	3,120	117	40	2,530	124	315	26,560	1,101
	250+	135	55,830	2,543	45	4,380	217	25	3,060	174	150	63,270	2,935
	Total	10,355	149,420	5,928	1,410	17,690	688	1,725	18,230	753	13,355	185,340	7,369
K Financial and insurance activities <sup>2</sup> (SIC: 64 - 66)	0-49	1,820	6,650	NA	160	*	NA	50	*	NA	2,025	7,130	NA
	50-249	80	*	NA	0	*	NA	0	NA	80	2,830	NA	
	250+	130	*	NA	10	*	NA	5	NA	130	73,590	NA	
	Total	2,030	81,570	NA	170	1,650	NA	60	340	NA	2,235	83,550	NA
L Real estate activities (SIC: 68)	0-49	4,260	14,050	1,584	655	1,850	175	385	1,400	138	5,285	17,310	1,897
	50-249	85	6,460	678	10	*	15	*	*	95	7,140	733	
	250+	40	6,630	653	15	*	5	*	*	45	7,000	693	
	Total	4,385	27,150	2,915	675	2,220	212	410	2,080	195	5,420	31,440	3,322
M Professional, scientific and technical activities (SIC: 69 - 75)	0-49	24,455	67,460	6,655	5,510	10,650	965	2,180	4,390	342	32,075	82,500	7,962
	50-249	355	21,640	2,672	40	1,170	172	20	410	22	375	23,210	2,866
	250+	205	40,840	8,077	30	1,750	199	15	930	171	215	43,510	8,447
	Total	25,015	129,940	17,404	5,580	13,570	1,337	2,215	5,720	535	32,665	149,230	19,275
N Administrative and support service activities (SIC: 77 - 82)	0-49	8,200	31,030	3,688	2,195	7,430	956	1,200	3,310	298	11,570	41,770	4,941
	50-249	305	20,500	1,991	35	1,620	264	10	680	84	330	22,800	2,340
	250+	270	105,950	6,080	50	4,790	362	15	820	48	275	111,560	6,490
	Total	8,770	157,480	11,759	2,275	13,830	1,582	1,225	4,820	430	12,175	176,120	13,771
P, Q Education, human health and social work activities (SIC: 85, 86 - 88)	0-49	6,630	56,000	2,945	895	5,800	342	595	4,060	213	8,040	65,860	3,500
	50-249	445	34,820	1,574	80	4,680	223	40	1,700	75	495	41,190	1,872
	250+	200	123,320	3,221	70	8,590	207	40	1,540	42	210	133,450	3,470
	Total	7,275	214,130	7,740	1,045	19,070	772	675	7,300	330	8,745	240,500	8,842
R, S Arts, entertainment and recreation; Other service activities (SIC: 84, 90 - 93, 94 - 96)	0-49	9,780	44,650	1,998	1,460	6,280	314	1,015	4,040	178	12,235	54,960	2,490
	50-249	190	11,700	772	25	1,860	62	20	940	30	225	14,490	865
	250+	100	29,130	6,994	25	2,070	232	15	690	22	105	31,880	7,248
	Total	10,075	85,470	9,764	1,515	10,200	609	1,050	5,660	230	12,565	101,340	10,603
<b>Total</b>	0-49	117,655	514,040	53,271	30,030	105,590	10,308	20,610	72,310	5,387	167,710	691,940	68,967
	50-249	3,485	225,610	30,775	595	30,560	4,549	290	12,110	1,416	3,920	268,280	36,740
	250+	2,250	876,350	148,378	520	60,680	11,617	245	21,980	4,384	2,365	959,010	164,379
	Total	123,390	1,616,000	232,425	31,145	196,830	26,474	21,145	106,410	11,188	173,995	1,919,230	270,086

Note: Totals may not equal the sum of the constituent parts due to rounding.

\* not available due to confidentiality constraints

Source: Scottish Government, ONS (IDBR)

1. Excludes central and local government

2. Counts of the number of enterprises operating within each urban/rural classification have been included. These do not sum to the total for Scotland, as the same enterprise may operate in more than one type of area.

3. Urban/rural classification according to 2011-12 sixfold classification

4. For more information on Standard Industrial Classification 2007 - please click here.

5. Turnover data for K Financial and insurance activities exclude the turnover of financial intermediation enterprises as it is not available on a comparable basis.

6. Sizeband is based on the number of employees that the enterprise employs across the UK.

**Table 12: Number of enterprises<sup>1</sup> in the public sector in Scotland and their total Scottish employment by sector<sup>2</sup> and by urban/rural classification<sup>3</sup>  
March 2016**

Sector	Urban <sup>4</sup>		Rural <sup>4</sup>		Scotland	
	Number of enterprises <sup>5</sup>	Total Scottish employment	Number of enterprises <sup>5</sup>	Total Scottish employment	Number of enterprises <sup>5</sup>	Total Scottish employment
A, B, D, E Primary industries <sup>6</sup>	25	4510	15	2230	25	6750
C Manufacturing	5	*	0	*	5	*
F Construction	25	7640	10	1040	25	8670
G Wholesale and retail trade; Repair of motor vehicles and motorcycles	15	*	5	*	15	460
H Transportation and storage	35	5200	15	1130	35	6330
I Accommodation and food service activities	15	1990	15	190	20	2180
J Information and communication	5	*	0	*	5	*
K Financial and insurance activities	5	*	0	0	5	*
L Real estate activities	15	*	5	*	15	1090
M Professional, scientific and technical activities	30	2930	10	1070	35	3990
N Administrative and support service activities	40	10720	15	1470	40	12190
O Public administration and defence; Compulsory social security	100	136340	50	11070	110	147410
P Education	55	97220	40	17940	60	115160
Q Human health and social work activities	65	221420	45	18010	65	239430
R Arts, entertainment and recreation	40	8140	25	1000	45	9140
S Other service activities	40	3310	20	470	45	3780
<b>Total</b>	<b>190</b>	<b>504450</b>	<b>105</b>	<b>55730</b>	<b>210</b>	<b>560180</b>

Note: Totals may not equal the sum of the constituent parts due to rounding.

Source : Scottish Government, ONS (IDBR)

\* not available due to confidentiality constraints

1. This data only refers to central and local government.

2. For more information on Standard Industrial Classification 2007 - please click here.

3. Urban/rural classification according to 2011-12 sixfold classification - this uses a datazone to urban/rural look-up i.e. the urban/rural category is applied according to the urban/rural classification of the datazone that the business site falls within.

4. Counts of the number of enterprises operating within each urban/rural classification have been included.

These do not sum to the total for Scotland, as the same enterprise may operate in more than one type of area.

5. Counts of the number of enterprises operating within each sector have been derived from an analysis at business site level. These do not sum to the total, as the same enterprise may operate in more than one sector.

6. Primary industries include Agriculture, forestry and fishing, Mining and quarrying and Electricity, gas and water supply.

For more information on Definitions and Methodology - please click here

**Table 13: Number of business sites<sup>1,2</sup> of registered enterprises by Local Authority area and urban/rural classification<sup>3</sup>**

**March 2016**

Local Authority area	1 Large	2 Other	3 Accessible	4 Remote	5 Accessible	6 Remote	All
	Urban Areas	Urban Areas	Small Towns	Small Towns	Rural	Rural	
Aberdeen City	10,895	0	475	0	40	0	11,405
Aberdeenshire	0	3,145	1,010	1,055	6,800	3,295	15,305
Angus	155	1,905	520	0	1,885	0	4,470
Argyll and Bute	0	525	0	1,200	200	2,590	4,515
City of Edinburgh	21,205	0	450	0	300	0	21,955
Clackmannanshire	0	720	400	0	230	0	1,355
Dumfries and Galloway	0	1,550	940	610	2,300	1,915	7,315
Dundee City	4,235	0	0	0	55	0	4,290
East Ayrshire	0	1,265	725	195	1,225	200	3,615
East Dunbartonshire	2,090	925	160	0	185	0	3,365
East Lothian	630	230	605	550	1,195	245	3,455
East Renfrewshire	2,480	0	230	0	155	0	2,865
Falkirk	0	4,060	20	0	455	0	4,535
Fife	0	6,880	1,510	0	2,630	0	11,020
Glasgow City	22,235	0	0	0	35	0	22,265
Highland	0	2,720	0	2,300	1,185	6,565	12,770
Inverclyde	0	1,600	280	0	165	0	2,050
Midlothian	0	1,450	485	0	710	0	2,640
Moray	0	880	790	205	1,165	760	3,800
Na h-Eileanan Siar	0	0	0	425	0	930	1,350
North Ayrshire	0	2,185	670	0	615	335	3,805
North Lanarkshire	5,875	1,370	805	0	825	0	8,870
Orkney Islands	0	0	0	335	0	1,275	1,605
Perth and Kinross	40	1,920	560	655	2,550	1,240	6,960
Renfrewshire	4,250	245	400	0	600	0	5,490
Scottish Borders	0	955	975	230	2,435	1,110	5,705
Shetland Islands	0	0	0	545	0	1,100	1,645
South Ayrshire	0	2,770	100	160	910	275	4,215
South Lanarkshire	2,050	5,095	1,090	0	1,770	215	10,220
Stirling	0	2,370	530	0	1,230	415	4,545
West Dunbartonshire	1,150	1,035	0	0	70	0	2,250
West Lothian	0	4,590	435	0	500	0	5,520
<b>Scotland</b>	<b>77,285</b>	<b>50,395</b>	<b>14,160</b>	<b>8,460</b>	<b>32,415</b>	<b>22,465</b>	<b>205,180</b>

Note: Totals may not equal the sum of the constituent parts due to rounding.

Source : Scottish Government, ONS (IDBR)

1. Excludes central and local government.

2. A business site (or local unit) refers to each individual shop, factory, restaurant etc that is part of an enterprise e.g. A large supermarket chain is considered to be one 'enterprise'. Each individual store that forms part of this supermarket chain is known as a 'business site'.

3. Urban/rural classification according to 2011-12 sixfold classification

[For more information on Definitions and Methodology - please click here](#)

**Table 14: Foreign-owned enterprises<sup>1</sup> by country of ownership<sup>2</sup> with total Scottish employment and turnover  
March 2016**

Continent/Country	Number of enterprises	Number of local units	Total Scottish employment	Total Scottish turnover (£m)
<b>Europe</b>	<b>1,335</b>	<b>5,180</b>	<b>167,400</b>	<b>44,329</b>
<b>EU</b>	<b>1,000</b>	<b>3,915</b>	<b>127,110</b>	<b>35,524</b>
Austria	15	45	550	94
Belgium	20	30	1,180	231
Cyprus	5	5	*	*
Czech Republic	0	0	*	*
Denmark	55	385	7,740	1,798
Finland	15	20	850	275
France	155	820	29,140	6,872
Germany	155	610	17,980	4,403
Greece	0	10	*	*
Irish Republic	105	235	6,300	3,068
Italy	40	65	2,970	1,027
Luxembourg	120	720	18,890	4,225
Malta	5	10	*	*
Netherlands	185	525	22,300	4,710
Poland	5	5	*	*
Portugal	5	5	*	*
Spain	40	260	10,350	*
Sweden	70	160	7,530	1,840
<b>EFTA</b>	<b>180</b>	<b>435</b>	<b>15,240</b>	<b>5,328</b>
Iceland	0	55	*	*
Liechtenstein	10	20	*	*
Norway	105	215	6,740	2,653
Switzerland	60	140	7,530	2,462
<b>Other European</b>	<b>150</b>	<b>830</b>	<b>25,050</b>	<b>3,476</b>
<i>of which</i>				
Faroe Islands	0	0	*	*
Gibraltar	5	15	*	*
Turkey	5	5	*	*
<i>UK Offshore Islands</i>	140	810	24,110	3,335

**Table 14: Foreign-owned enterprises<sup>1</sup> by country of ownership<sup>2</sup> with total Scottish employment and turnover  
March 2016**

Continent/Country	Number of enterprises	Number of local units	Total Scottish employment	Total Scottish turnover (£m)
<b>Americas</b>	<b>715</b>	<b>2,675</b>	<b>124,090</b>	<b>40,592</b>
<i>of which</i>				
Bahamas	0	25	*	*
Bermuda	25	110	1,920	290
British Virgin Islands	35	85	3,040	611
Canada	45	85	3,630	3,449
Cayman Islands	40	235	9,010	1,148
Curacao	15	25	2,130	*
Mexico	0	20	*	*
Panama	5	40	*	*
Trinidad and Tobago	0	0	*	*
United States	550	2,050	102,810	33,749
Venezuela	0	0	*	*
<b>Asia</b>	<b>190</b>	<b>520</b>	<b>16,380</b>	<b>6,050</b>
<i>of which</i>				
Bahrain	0	0	*	*
China	10	40	1,830	*
Hong Kong	15	145	1,980	662
India	10	20	*	*
Israel	0	0	*	*
Japan	85	210	6,250	1,489
Jordan	0	0	*	*
Kuwait	5	5	*	*
Malaysia	5	10	*	*
Pakistan	5	5	*	*
Qatar	0	0	*	*
Saudi Arabia	5	5	*	*
Singapore	25	40	1,430	188
South Korea	5	10	*	*
Taiwan, Province of China	5	5	*	*
Thailand	5	10	*	*
United Arab Emirates	15	20	1,160	*
<b>Australasia and Oceania</b>	<b>55</b>	<b>235</b>	<b>6,710</b>	<b>645</b>
<i>of which</i>				
Australia	50	230	6,400	607
Cook Islands	0	0	*	*
Marshall Islands	0	5	*	*
New Zealand	0	0	*	*
<b>Africa</b>	<b>15</b>	<b>50</b>	<b>2,300</b>	<b>400</b>
<i>of which</i>				
Egypt	0	20	*	*
Mauritius	0	0	*	*
South Africa	10	30	2,150	384
<b>Total Foreign-owned Enterprises</b>	<b>2,305</b>	<b>8,655</b>	<b>316,870</b>	<b>92,016</b>

Note: Totals may not equal the sum of the constituent parts due to rounding.

Source: Scottish Government, ONS (IDBR)

\* not available due to confidentiality constraints

- no registered enterprises present in Scotland

1. Excludes central and local government.

2. The IDBR uses data provided by Dun & Bradstreet to identify enterprise groups with foreign ownership and/or subsidiaries.



## **A National Statistics publication for Scotland**

The United Kingdom Statistics Authority has designated these statistics as National Statistics, in accordance with the Statistics and Registration Service Act 2007 and signifying compliance with the Code of Practice for Official Statistics.

Designation can be interpreted to mean that the statistics: meet identified user needs; are produced, managed and disseminated to high standards; and are explained well.

### **Correspondence and enquiries**

For enquiries about this publication please contact:

Marina Curran,  
Office of the Chief Economic Adviser,  
Telephone: 0300-244-6813,  
e-mail: [Marina.Curran@gov.scot](mailto:Marina.Curran@gov.scot)

For general enquiries about Scottish Government statistics please contact:

Office of the Chief Statistician, Telephone: 0131 244 0442,  
e-mail: [statistics.enquiries@scotland.gsi.gov.uk](mailto:statistics.enquiries@scotland.gsi.gov.uk)

### **How to access background or source data**

The data collected for this statistical bulletin publication>:

- are available in more detail through [Statistics.gov.scot](http://Statistics.gov.scot)
- may be made available on request, subject to consideration of legal and ethical factors. Please contact [industrystatistics@gov.scot](mailto:industrystatistics@gov.scot) for further information.
- cannot be made available by Scottish Government for further analysis as Scottish Government is not the data controller.

### **Complaints and suggestions**

If you are not satisfied with our service or have any comments or suggestions, please write to the Chief Statistician, 3WR, St Andrews House, Edinburgh, EH1 3DG, Telephone: (0131) 244 0302, e-mail [statistics.enquiries@scotland.gsi.gov.uk](mailto:statistics.enquiries@scotland.gsi.gov.uk).

If you would like to be consulted about statistical collections or receive notification of publications, please register your interest at [www.gov.scot/scotstat](http://www.gov.scot/scotstat)  
Details of forthcoming publications can be found at [www.gov.scot/statistics](http://www.gov.scot/statistics)

### **Crown Copyright**

You may use or re-use this information (not including logos) free of charge in any format or medium, under the terms of the Open Government Licence. See: [www.nationalarchives.gov.uk/doc/open-government-licence/](http://www.nationalarchives.gov.uk/doc/open-government-licence/)