

# Statistics Publication Notice

## Economy Series

A NATIONAL STATISTICS PUBLICATION FOR SCOTLAND

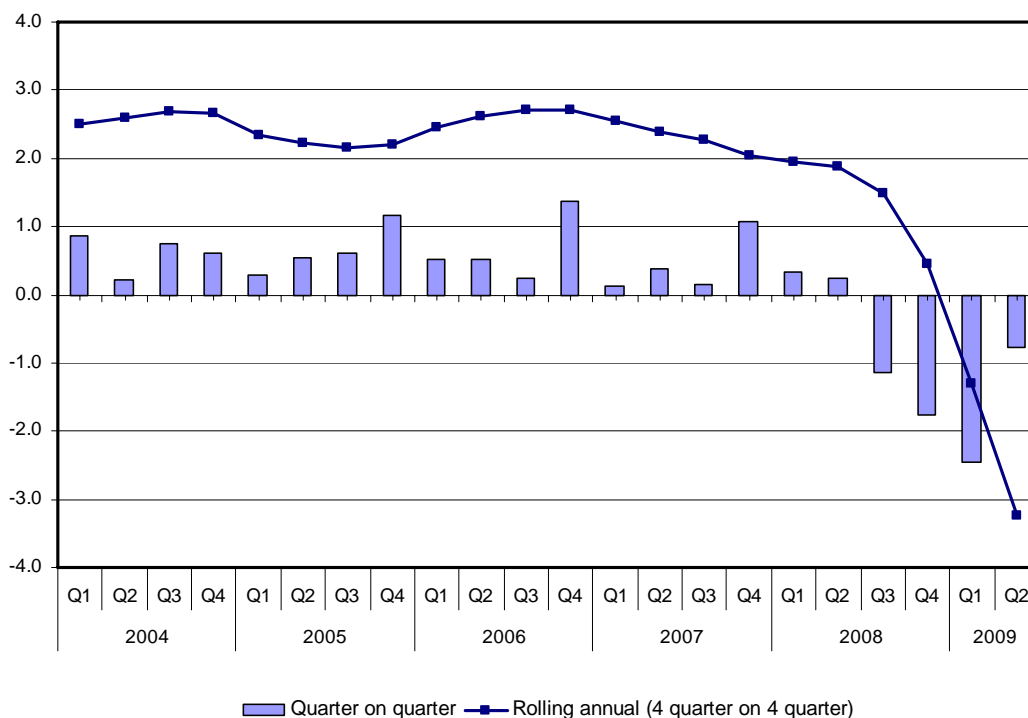
### GROSS DOMESTIC PRODUCT (GDP) FOR SCOTLAND FOR THE 2nd QUARTER OF 2009



21 October 2009

Gross Domestic Product (GDP) in constant basic prices, also referred to as Gross Value Added (GVA), in Scotland fell by 3.2 per cent over the year to the end of 2009 Q2 and fell by 0.8 per cent in the second quarter of 2009, according to provisional estimates released today by Scotland's Chief Statistician.

#### GDP Growth Rates 2004-2009 Q2



The **main findings** of the latest figures are:

- GDP fell by 3.2 per cent annually and fell by 0.8 per cent in the second quarter of 2009 (seasonally adjusted).
- In the year to end-June 2009, the Scottish service sector fell by 2.5 per cent, the production sector fell by 5.7 per cent and the construction sector fell by 6.3 per cent.
- In the second quarter of 2009, the service sector fell by 0.4 per cent, the production sector declined by 1.9 per cent and the construction sector fell by 2.8 per cent.

## UK Figures:

- The UK figures show that GDP on a comparable basis (constant basic prices) fell by 3.2 per cent in the year to end-June 2009 and fell 0.6 per cent in the second quarter of 2009.
- Over the year, the UK experienced a 1.9 per cent fall in services, a 8.8 per cent fall in production and the construction sector fell by 8.2 per cent.
- In the second quarter of 2009, the UK service sector fell by 0.6 per cent, the production sector declined by 0.5 per cent and the construction sector declined by 0.8 per cent.

## Industry Analysis:

- In the second quarter of 2009, service sector output in Scotland fell by 0.4 per cent. Within services, transport, storage & communication (-1.4%), financial services (-1.0%), other services (-1.2%) and retail & wholesale (-0.4%) all declined over the quarter. The public administration, education & health sector grew by 0.2 per cent along with modest growth in real estate & business services (+0.2%).
- Output in the production sector fell by 1.9 per cent in the latest quarter. Within production, electricity, gas & water supply (-11.0%) and manufacturing (-0.3%) experienced falls in the latest quarter, but mining and quarrying (+2.5%) grew over the period. Within manufacturing, metals & metal products (-8.5%), chemicals & man-made fibres (-4.2%) and total other manufacturing (-0.2%) fell over the latest quarter. Food, drink & tobacco (+2.3%), engineering & allied industries (+1.6%) and textiles, footwear, leather & clothing (+2.2%) grew over the period.

## BACKGROUND NOTES

### Definitions and Methodology

1. Gross Domestic Product (GDP) is a measure of the value added to materials and other inputs in the production of goods and services by resident organisations; before allowing for depreciation or capital consumption. Net receipts from interest, profits and dividends abroad are excluded. The estimates produced in this publication measure **GDP at basic prices**, also referred to as **Gross Value Added (GVA)**.
2. Scottish GVA estimates will generally be less reliable than the equivalent estimates for the UK, primarily because the UK figures are produced by balancing three independent sets of estimates (Output (GVA), Income & Expenditure-based approaches).
3. Furthermore, the survey data for Scotland tend to be based on smaller numbers of units, making figures for Scotland more likely to be susceptible to statistical variance. Statistical variance in estimates is directly proportional to the variability in the underlying population of interest. In the current economic climate, the variability in the economy is increased and users should bare this in mind when interpreting all economic indicators.
4. The Scottish National Accounts Project (SNAP) is exploring the feasibility of producing income and expenditure measures of GDP for Scotland. Further information is available using <http://www.scotland.gov.uk/SNAP>

## **Chainlinking**

5. Annual chainlinking is the technique used to compile the overall measure of GVA growth and also the other, lower-level published aggregates. The resultant indices represent changes in the value added, at constant prices, in the production of goods and services in individual industries. These industries are compiled using the standard industrial classification SIC2003.

6. The Office for National Statistics updated the weights used to compile their aggregate measures, including GVA, in the 2009 Q1 Quarterly National Accounts published on the 30<sup>th</sup> June 2009. The latest weights used to produce growth rates for Scotland in this publication continue to relate to the year 2004 whilst the weights used in the UK statistics relate to the calendar year 2005. The Scottish weights will be updated following the next publication of Input-Output tables for Scotland.

## **Seasonal Adjustment**

7. The data used in the production of these quarterly GDP estimates are seasonally adjusted in accordance with the European System of Accounts guidelines and international practice.

8. The X-12-ARIMA technique is used where appropriate to remove seasonal peaks and troughs so that the underlying trends and other features of the data are easier to identify. Further information about the seasonal adjustment of the GDP data can be found in section A3 of Scottish Economic Statistics 2006 ([www.scotland.gov.uk/stats/ses](http://www.scotland.gov.uk/stats/ses)).

## **Future developments**

9. Following discussion with SESCOG in May 2009, the methodology and source data used to compile the Financial Services sector indices is being reviewed.

10. The recent development work carried out by the Information Services Division of the NHS Scotland and analysts in the Scottish Government's Health division towards establishing a direct measure of health service output is nearly complete. It is planned to incorporate these measures when the series are reweighted.

11. Ratio estimation methodology for the Index of Production was discussed at the SESCOG meeting on 29 October 2008. It was agreed that this should be incorporated as an improvement to the current use of a panel estimate. This methodology is currently in development and it is planned to introduce it when the series are reweighted.

## **Background**

12. Series are derived from indicators based on data from a wide range of sources. Examples include: deflated turnover, deflated production, the volume of a good or service sold or produced and, for some parts of the public sector, employee numbers.

13. The quarterly Scottish GDP estimates are published within 4 months (approximately 16 weeks) of the end of the quarter to which they relate.

14. The indices published within this Statistics Publication Notice are grouped according to the 2003 revised Standard Industrial Classification. The four broad groupings of industries are:

(a) *agriculture, hunting, forestry & fishing;*

(b) *production* - mining & quarrying industries; energy & water supply; and manufacturing, which includes: refined petroleum products & nuclear fuel; chemicals & man-made fibres; metal & metal products; engineering & allied industries; food, drink & tobacco industries; textiles, footwear, leather & clothing; other manufacturing;

(c) *construction;*

(d) *services* - retail & wholesale; hotels & catering; transport, storage & communication; financial services; real estate & business services; public administration, education & health; other services.

### **Cash Estimates of GVA**

15. Estimates of the cash value of Gross Value Added (GVA) at current prices for Scotland (and other regions of the UK) are produced by the Office for National Statistics. Estimates for 2007 were published on 12th December 2008. The ONS current price value estimates are methodologically different from the Scottish Government volume (constant price) index and are based on different data sources.

### **Revisions**

16. Very few statistical revisions arise as a result of 'errors' in the popular sense of the word. All estimates, by definition, are subject to statistical 'error' but in this context the word refers to the uncertainty inherent in any process or calculation that uses sampling, estimation or modelling. Most revisions reflect either the adoption of new statistical techniques, or the incorporation of new information which allows the statistical error of previous estimates to be reduced. Only rarely are there avoidable 'errors' such as human or system failures, and such mistakes are made quite clear when they do occur.

17. The figures in this Statistics Publication Notice incorporate revisions to previously published estimates and include the effects of recent ONS revisions to UK GVA series and the underlying source data. Tables 8 – 13 identify the extent of revisions since the last publication in July 2009. Revisions are shown to one decimal place for total GVA and GVA excluding oil & gas. Revisions are shown to zero decimal places for all other sectors.

The series most affected by revisions this quarter are:

- *Other Services* – due to an improvement in seasonal adjustment methodology;
- *Retail* – due to revisions to deflators;
- *Transport Equipment* – The input series for shipbuilding has been replaced with a deflated turnover series using an improved methodology, ratio estimation, that will be more sensitive to current activity.

A number of other series are affected by revisions to a lesser extent. These are mainly due to revisions to input data, deflators and seasonal adjustment factors.

### **National Statistics**

18. National Statistics are produced to high professional standards set out in the National Statistics Code of Practice. They undergo regular quality assurance reviews to ensure that they meet customer needs. They are produced free from any political interference.

19. Detailed results for all industries, are available to download from the Scottish Government website [www.scotland.gov.uk/gdp](http://www.scotland.gov.uk/gdp).

### **Issued by**

Office of the Chief Economic Adviser  
DG Economy  
St Andrew's House  
Regent Road  
Edinburgh, EH1 3DG

### **Telephone**

Press Office:	Tim Jays	0131-244-5122
Statistician:	Richard Morrison	0131-244-3768

**Table 1: Gross Value Added chained volume measures at basic prices,<sup>1,2</sup> by category of output**

Scotland, 2002 to 2009 Q2

2004=100

SIC 2003		Total Gross Value Added	Agriculture, Forestry & Fishing	Production	Construction	Services
SIC 2003		A-P	A,B	C,D,E	F	G-P
<b>2004 weights<sup>3</sup></b>		<b>1000.0</b>	<b>15.1</b>	<b>177.6</b>	<b>64.9</b>	<b>742.4</b>
2002		95.3	93.4	102.4	86.6	94.4
2003		97.4	96.2	99.9	92.4	97.3
2004		100.0	100.0	100.0	100.0	100.0
2005		102.2	93.3	98.3	102.7	103.3
2006		105.0	95.9	98.0	108.1	106.5
2007		107.1	93.6	97.8	106.2	109.7
2008		107.6	91.6	97.1	104.7	110.7
Seasonally Adjusted						
2002	Q1	94.5	91.8	102.1	86.3	93.5
	Q2	94.8	92.8	102.7	85.2	93.7
	Q3	96.0	93.9	103.0	87.0	95.1
	Q4	96.1	95.1	102.0	88.1	95.4
2003	Q1	96.3	94.1	101.0	87.8	96.0
	Q2	96.9	95.0	99.6	90.6	96.9
	Q3	97.9	96.7	99.5	94.2	97.9
	Q4	98.5	98.9	99.7	97.2	98.3
2004	Q1	99.3	100.8	100.3	99.3	99.1
	Q2	99.5	101.4	99.7	99.6	99.4
	Q3	100.3	100.0	99.8	100.2	100.4
	Q4	100.9	97.8	100.1	101.0	101.1
2005	Q1	101.2	95.2	98.4	100.7	102.0
	Q2	101.7	92.6	99.0	102.5	102.5
	Q3	102.4	92.3	97.7	103.4	103.6
	Q4	103.6	93.1	98.2	104.3	105.0
2006	Q1	104.1	94.8	97.8	107.0	105.5
	Q2	104.6	96.1	97.8	106.9	106.2
	Q3	104.9	97.5	98.0	109.8	106.2
	Q4	106.3	95.4	98.2	108.9	108.2
2007	Q1	106.4	95.1	96.5	107.8	108.9
	Q2	106.8	94.2	98.6	107.3	109.0
	Q3	107.0	92.5	97.3	105.5	109.7
	Q4	108.1	92.6	98.8	104.2	111.0
2008	Q1	108.5	90.9	97.3	105.0	111.8
	Q2	108.8	92.1	98.4	106.6	111.8
	Q3	107.5	91.8	98.2	106.0	110.2
	Q4	105.6	91.6	94.5	101.0	109.0
2009	Q1	103.0	92.5	89.3	95.2	107.2
	Q2	102.2	92.6	87.6	92.5	106.8
<b>Percentage change:</b>						
	Q2 08 on Q1 08	+0.2	+1.3	+1.1	+1.5	-0.1
	Q3 08 on Q2 08	-1.1	-0.4	-0.2	-0.6	-1.4
	Q4 08 on Q3 08	-1.8	-0.1	-3.8	-4.7	-1.1
	Q1 09 on Q4 08	-2.5	+1.0	-5.6	-5.8	-1.6
	Q2 09 on Q1 09	-0.8	+0.1	-1.9	-2.8	-0.4
<b>% change latest 4 qtrs on previous 4 qtrs</b>						
		-3.2	+0.1	-5.7	-6.3	-2.5

1. Gross Value Added (GVA) is also referred to as Gross Domestic Product (GDP) at basic prices

2. Estimates cannot be regarded as accurate to the last digit shown

3. Weights may not sum to the total due to rounding

**Table 2: Gross Value Added chained volume measures at basic prices,<sup>1,2</sup> by category of output**

Scotland, 2006 to 2009 Q2

2004=100

SIC 2003	Total Gross Value Added	All Sectors excl. extraction of mineral oil & natural gas		Production Sector				Construction	Service Sector					
		Agriculture, forestry and fishing		Total	Mining and Quarrying Industries	Electricity, Gas and Water Supply	Manufacturing		Total	Distribution, Hotels and Catering	Transport, Storage and Communication	Business Services and Finance	Government and Other Services	
		A-P	A-P excl 11.1											A,B
<b>2004 weights<sup>3</sup></b>	<b>1000</b>	<b>992</b>	<b>15</b>	<b>178</b>	<b>11</b>	<b>26</b>	<b>141</b>	<b>65</b>	<b>742</b>	<b>140</b>	<b>70</b>	<b>256</b>	<b>276</b>	
2006	105.0	105.2	95.9	98.0	82.8	99.2	98.9	108.1	106.5	103.7	111.0	112.1	101.7	
2007	107.1	107.4	93.6	97.8	77.2	90.4	100.7	106.2	109.7	105.7	121.7	116.0	102.8	
2008	107.6	108.0	91.6	97.1	69.9	93.4	99.9	104.7	110.7	108.4	126.0	114.4	104.5	
Seasonally Adjusted														
2006	Q1	104.1	104.2	94.8	97.8	86.6	97.5	98.8	107.0	105.5	102.6	107.9	110.2	102.0
	Q2	104.6	104.8	96.1	97.8	82.4	99.8	98.6	106.9	106.2	104.3	108.9	111.2	101.9
	Q3	104.9	105.1	97.5	98.0	81.1	101.2	98.7	109.8	106.2	103.6	110.7	111.3	101.7
	Q4	106.3	106.6	95.4	98.2	81.1	98.1	99.5	108.9	108.2	104.2	116.3	115.8	101.3
2007	Q1	106.4	106.7	95.1	96.5	78.8	84.1	100.1	107.8	108.9	103.7	121.4	115.4	102.4
	Q2	106.8	107.2	94.2	98.6	79.6	98.1	100.1	107.3	109.0	105.7	119.8	115.1	102.4
	Q3	107.0	107.3	92.5	97.3	77.4	90.3	100.1	105.5	109.7	106.9	123.1	115.3	102.6
	Q4	108.1	108.5	92.6	98.8	73.0	89.1	102.6	104.2	111.0	106.6	122.7	118.1	103.7
2008	Q1	108.5	108.9	90.9	97.3	72.2	88.3	100.9	105.0	111.8	109.0	124.6	118.1	104.2
	Q2	108.8	109.1	92.1	98.4	71.0	91.3	101.8	106.6	111.8	109.8	127.0	116.0	104.9
	Q3	107.5	107.9	91.8	98.2	69.4	99.7	100.2	106.0	110.2	108.4	127.3	112.4	104.7
	Q4	105.6	106.0	91.6	94.5	67.0	94.4	96.7	101.0	109.0	106.4	125.2	111.0	104.2
2009	Q1	103.0	103.4	92.5	89.3	61.1	96.4	90.1	95.2	107.2	106.1	123.9	106.4	104.3
	Q2	102.2	102.6	92.6	87.6	62.6	85.8	89.9	92.5	106.8	105.0	122.2	106.3	104.2
<b>Percentage change, latest quarter on previous quarter</b>														
		-0.8	-0.8	0.1	-1.9	2.5	-11.0	-0.3	-2.8	-0.4	-1.0	-1.4	-0.2	0.0
<b>Percentage change, latest 4 quarters on preceding 4 quarters</b>														
		-3.2	-3.2	0.1	-5.7	-11.4	4.8	-7.0	-6.3	-2.5	-1.5	0.3	-6.7	0.5

UK, 2006 to 2009 Q2

2004=100

SIC 2003	Total Gross Value Added	All Sectors excl. extraction of mineral oil & natural gas		Production Sector				Construction	Service Sector					
		Agriculture, forestry and fishing		Total	Mining and Quarrying Industries	Electricity, Gas and Water Supply	Manufacturing		Total	Distribution, Hotels and Catering	Transport, Storage and Communication	Business Services and Finance	Government and Other Services	
		A-P	A-P excl 11.1											A,B
<b>2005 weights<sup>3</sup></b>	<b>1000</b>	<b>978</b>	<b>7</b>	<b>172</b>	<b>25</b>	<b>15</b>	<b>133</b>	<b>63</b>	<b>759</b>	<b>146</b>	<b>72</b>	<b>304</b>	<b>236</b>	
	CGCE	JUNT	GDQA	CKYW	CKYX	CKYZ	CKYY	GDQB	GDQS	GDQE	GDQH	GDQN	GDQU	
2006	105.4	106.0	108.4	98.8	84.0	99.1	101.4	102.1	106.9	105.0	106.2	111.5	102.4	
2007	108.2	108.8	103.2	99.1	82.7	99.3	102.0	104.9	110.6	108.2	109.9	117.7	103.4	
2008	108.8	109.7	103.3	96.0	77.2	99.4	99.1	104.5	112.1	107.1	111.8	120.6	104.7	
Seasonally Adjusted														
2006	Q1	104.6	105.0	109.7	99.5	89.1	102.7	100.9	101.3	105.7	103.6	104.4	109.9	102.0
	Q2	105.1	105.6	107.8	98.6	83.2	98.9	101.3	101.5	106.5	104.6	105.8	110.9	102.3
	Q3	105.6	106.1	109.4	98.5	82.8	98.1	101.4	102.4	107.1	105.3	106.4	111.9	102.4
	Q4	106.4	107.1	106.6	98.5	80.7	96.8	102.0	103.2	108.2	106.3	108.2	113.2	103.0
2007	Q1	107.2	107.8	104.1	98.8	82.9	98.1	101.8	103.7	109.5	107.2	109.9	115.4	103.4
	Q2	107.9	108.5	103.6	99.3	83.5	97.8	102.3	104.8	110.3	107.9	110.3	116.9	103.3
	Q3	108.5	109.2	102.2	98.8	82.4	99.4	101.8	105.2	111.1	108.8	109.3	119.0	103.1
	Q4	109.1	109.8	102.9	99.3	82.0	102.0	102.2	105.9	111.6	109.1	110.2	119.3	103.8
2008	Q1	109.9	110.7	102.2	99.1	78.6	100.5	102.7	106.9	112.7	109.8	112.1	120.7	104.7
	Q2	109.8	110.6	104.5	97.8	78.3	100.5	101.1	106.5	112.9	109.0	112.7	121.3	104.7
	Q3	108.8	109.6	104.0	95.7	76.9	99.2	98.8	104.9	112.1	106.2	112.0	120.6	105.1
	Q4	106.8	107.6	102.4	91.4	75.0	97.3	93.7	99.8	110.8	103.3	110.3	119.7	104.5
2009	Q1	104.1	104.9	101.6	86.7	72.2	93.7	88.6	93.0	108.8	102.1	106.8	116.2	104.1
	Q2	103.5	104.3	98.7	86.3	71.8	90.3	88.5	92.3	108.1	101.7	104.9	115.4	103.8
<b>Percentage change, latest quarter on previous quarter</b>														
		-0.6	-0.6	-2.9	-0.5	-0.6	-3.6	-0.1	-0.8	-0.6	-0.4	-1.8	-0.7	-0.2
<b>Percentage change, latest 4 quarters on preceding 4 quarters<sup>4</sup></b>														
		-3.2	-3.2	-1.3	-8.8	-7.9	-5.4	-9.4	-8.2	-1.9	-5.4	-2.3	-1.8	+0.3

1. Gross Value Added (GVA) is also referred to as Gross Domestic Product (GDP) at basic prices

2. Estimates cannot be regarded as accurate to the last digit shown

3. Weights may not sum to the totals due to rounding

4. This is a different measure from that shown in the ONS press release: the change to the latest quarter from the same quarter of previous year

**Table 3: Gross Value Added chained volume measures at basic prices: <sup>1,2</sup> service industries**

Scotland, 2006 to 2009 Q2

		<b>2004=100</b>						
		Retail & wholesale	Hotels & catering	Transport, Storage & Communication	Financial services	Real Estate & Business Services	Public Admin, Education and Health	Other services
<b>SIC 2003</b>		<b>G</b>	<b>H</b>	<b>I</b>	<b>J</b>	<b>K</b>	<b>L,M,N</b>	<b>O,P</b>
<b>2004 weights<sup>3</sup></b>		<b>106</b>	<b>33</b>	<b>70</b>	<b>79</b>	<b>177</b>	<b>221</b>	<b>55</b>
2006		105.0	99.4	111.0	114.9	110.9	103.3	95.4
2007		108.4	97.3	121.7	116.6	115.7	103.7	99.1
2008		111.2	99.8	126.0	108.9	116.8	104.1	106.1
Seasonally Adjusted								
2006	Q1	103.5	99.5	107.9	113.9	108.6	102.8	98.8
	Q2	105.8	99.6	108.9	113.5	110.2	103.5	95.3
	Q3	104.6	100.3	110.7	113.2	110.5	103.5	94.4
	Q4	106.1	98.2	116.3	119.1	114.3	103.4	93.0
2007	Q1	105.5	97.9	121.4	120.8	113.0	103.5	98.0
	Q2	108.3	97.5	119.8	116.3	114.6	103.4	98.3
	Q3	109.9	97.3	123.1	114.0	115.9	103.7	98.3
	Q4	109.8	96.6	122.7	115.4	119.4	104.2	101.9
2008	Q1	111.4	101.5	124.6	110.0	121.7	104.0	105.1
	Q2	113.0	99.8	127.0	110.6	118.4	104.0	108.6
	Q3	111.3	99.3	127.3	107.7	114.5	104.0	107.4
	Q4	108.9	98.7	125.2	107.4	112.7	104.4	103.3
2009	Q1	109.5	95.3	123.9	102.3	108.2	105.1	101.2
	Q2	109.1	92.2	122.2	101.3	108.5	105.3	100.1
<b>Percentage change, latest quarter on previous quarter</b>		-0.4	-3.3	-1.4	-1.0	+0.2	+0.2	-1.2
<b>Percentage change, latest 4 quarters on preceding 4 quarters</b>		-1.2	-2.5	+0.3	-7.0	-6.6	+0.7	-0.4

UK, 2006 to 2009 Q2

		<b>2004=100</b>						
		Retail & wholesale	Hotels & catering	Transport, Storage & Communication	Financial services	Real Estate & Business Services	Public Admin, Education and Health	Other services
<b>2005 weights<sup>3</sup></b>		<b>116</b>	<b>29</b>	<b>72</b>	<b>71</b>	<b>233</b>	<b>184</b>	<b>52</b>
		GDQC	GDQD	GDQH	GDQI	GDQM	WSBA	GDQR
2006		104.7	106.0	106.2	112.3	111.2	102.9	100.7
2007		108.0	109.3	109.9	120.4	116.8	103.7	102.3
2008		106.5	109.5	111.8	127.7	118.4	104.8	104.7
Seasonally Adjusted								
2006	Q1	103.4	104.3	104.4	110.3	109.7	102.6	100.0
	Q2	104.4	105.4	105.8	112.0	110.6	102.7	100.6
	Q3	104.9	107.1	106.4	113.2	111.5	103.1	100.1
	Q4	106.1	107.1	108.2	113.8	113.0	103.2	102.3
2007	Q1	106.9	108.1	109.9	117.5	114.7	103.7	102.5
	Q2	107.3	110.3	110.3	119.5	116.1	103.6	102.1
	Q3	108.5	109.6	109.3	121.9	118.1	103.6	101.6
	Q4	109.0	109.4	110.2	122.7	118.3	104.1	102.8
2008	Q1	109.5	111.3	112.1	125.9	119.1	104.2	106.3
	Q2	108.9	109.4	112.7	127.4	119.5	104.3	105.9
	Q3	105.4	109.6	112.0	128.8	118.1	105.0	105.5
	Q4	102.1	107.9	110.3	128.9	116.9	105.5	100.9
2009	Q1	101.4	105.1	106.8	126.2	113.2	105.6	98.7
	Q2	101.1	103.9	104.9	126.4	112.0	105.6	97.5
<b>Percentage change, latest quarter on previous quarter</b>		-0.3	-1.2	-1.8	+0.2	-1.0	+0.0	-1.2
<b>Percentage change, latest 4 quarters on preceding 4 quarters<sup>4</sup></b>		-6.0	-3.0	-2.3	+2.5	-3.1	+1.3	-3.4

1. Gross Value Added (GVA) is also referred to as Gross Domestic Product (GDP) at basic prices

2. Estimates cannot be regarded as accurate to the last digit shown

3. Weights may not sum to the totals due to rounding

4. This is a different measure from that shown in the ONS press release: the change to the latest quarter from the same quarter of previous year

**Table 4: Gross Value Added chained volume measures at basic prices:<sup>1,2</sup> detailed service industries**

Scotland, 2006 to 2009 Q2

		<b>2004=100</b>						
		Retail	Transport	Communications	Banking	Public Administration and Defence	Education	Health and Social Work
<b>SIC 2003</b>		<b>div 52</b>	<b>div 60-63</b>	<b>div 64</b>	<b>div 65.12/1</b>	<b>L</b>	<b>M</b>	<b>N</b>
<b>2004 weights</b>		<b>53</b>	<b>42</b>	<b>28</b>	<b>45</b>	<b>70</b>	<b>61</b>	<b>90</b>
2006		103.3	105.7	119.0	112.5	102.5	98.5	107.2
2007		107.0	111.7	137.0	120.5	101.4	97.4	109.7
2008		109.8	110.7	149.2	119.5	100.0	97.2	112.0
Seasonally Adjusted								
2006	Q1	101.4	103.0	115.3	111.3	102.7	99.0	105.4
	Q2	104.1	104.6	115.3	109.5	102.9	98.7	107.3
	Q3	103.2	106.5	117.1	110.2	102.4	98.3	107.8
	Q4	104.5	108.5	128.1	119.1	101.8	97.9	108.3
2007	Q1	103.1	111.4	136.5	121.7	102.0	97.6	108.6
	Q2	106.6	113.2	129.9	119.2	101.2	97.4	109.1
	Q3	109.2	112.0	139.8	117.4	101.2	97.4	109.9
	Q4	109.1	110.1	141.8	123.9	101.3	97.4	111.0
2008	Q1	109.3	110.9	145.3	117.9	100.0	97.4	111.6
	Q2	108.2	110.2	152.4	120.5	100.0	97.4	111.6
	Q3	110.6	110.3	153.0	118.7	100.0	97.1	111.8
	Q4	111.0	111.4	146.2	121.0	100.2	96.8	113.0
2009	Q1	113.1	109.3	146.1	114.5	100.6	96.4	114.4
	Q2	112.6	109.2	141.9	113.6	100.4	96.0	115.5
<b>Percentage change, latest quarter on previous quarter</b>		-0.4	-0.1	-2.9	-0.9	-0.2	-0.4	+1.0
<b>Percentage change, latest 4 quarters on preceding 4 quarters</b>		+2.6	-0.7	+1.3	-2.5	-0.3	-0.9	+2.4

1. Gross Value Added (GVA) is also referred to as Gross Domestic Product (GDP) at basic prices

2. Estimates cannot be regarded as accurate to the last digit shown

**Table 5: Gross Value Added chained volume measures at basic prices:<sup>1,2</sup> production industries**

Scotland, 2006 to 2009 Q2

2004 = 100

SIC 2003	Manufacturing Industries											
	Total Production	Mining and Quarrying Industries	Electricity, Gas and Water Supply	Manu- facturing	Refined Petroleum Products and Nuclear Fuel	Chemicals & Man-Made Fibres	Metals & Metal Products	Engineering and Allied Industries	Food, Drink & Tobacco Industries	Textiles, Footwear, Leather & Clothing	Total Other Manu- facturing	
	C,D,E	C	E	D	DF	DG	DJ	DK,DL,DM	DA	DB,DC	DD,DE,DH, DI, DN	
<b>2004 weights<sup>3</sup></b>	<b>178</b>	<b>11</b>	<b>26</b>	<b>141</b>	<b>2</b>	<b>13</b>	<b>12</b>	<b>49</b>	<b>30</b>	<b>4</b>	<b>31</b>	
2006	98.0	82.8	99.2	98.9	91.6	106.2	109.1	94.6	100.9	84.5	99.3	
2007	97.8	77.2	90.4	100.7	82.2	113.1	111.9	97.4	103.5	78.8	98.4	
2008	97.1	69.9	93.4	99.9	87.3	115.9	108.7	98.0	105.0	72.9	92.6	
Seasonally Adjusted												
2006	Q1	97.8	86.6	97.5	98.8	91.7	106.1	107.4	94.8	98.7	87.8	100.8
	Q2	97.8	82.4	99.8	98.6	91.5	103.3	108.6	94.4	100.3	85.1	100.3
	Q3	98.0	81.1	101.2	98.7	91.9	108.2	109.1	93.4	101.8	83.3	98.7
	Q4	98.2	81.1	98.1	99.5	91.3	107.2	111.3	96.0	102.8	81.8	97.4
2007	Q1	96.5	78.8	84.1	100.1	81.4	115.4	109.5	95.8	102.6	82.6	98.5
	Q2	98.6	79.6	98.1	100.1	77.9	114.3	113.1	96.3	101.6	79.4	98.3
	Q3	97.3	77.4	90.3	100.1	81.0	110.8	112.0	96.3	104.1	76.4	98.2
	Q4	98.8	73.0	89.1	102.6	88.3	111.8	112.9	101.2	105.5	76.7	98.8
2008	Q1	97.3	72.2	88.3	100.9	88.2	112.9	107.6	98.2	106.3	75.6	96.8
	Q2	98.4	71.0	91.3	101.8	83.2	115.0	111.2	100.5	105.8	75.4	96.1
	Q3	98.2	69.4	99.7	100.2	88.9	123.5	110.4	96.3	105.7	73.4	92.0
	Q4	94.5	67.0	94.4	96.7	88.9	112.0	105.8	96.9	102.4	67.4	85.4
2009	Q1	89.3	61.1	96.4	90.1	90.4	96.5	106.4	88.0	99.6	61.7	79.5
	Q2	87.6	62.6	85.8	89.9	82.2	92.4	97.4	89.4	101.9	63.1	79.4
<b>Percentage change, latest quarter on previous quarter</b>												
	-1.9	+2.5	-11.0	-0.3	-9.1	-4.2	-8.5	+1.6	+2.3	+2.2	-0.2	
<b>Percentage change, latest 4 quarters on previous 4 quarters</b>												
	-5.7	-11.4	+4.8	-7.0	+2.8	-5.8	-5.4	-6.5	-2.9	-12.6	-13.7	

UK, 2006 to 2009 Q2

2004 = 100

SIC 2003	Manufacturing Industries											
	Total Production	Mining and Quarrying Industries	Electricity, Gas and Water Supply	Manu- facturing	Refined Petroleum Products and Nuclear Fuel	Chemicals & Man-Made Fibres	Metals & Metal Products	Engineering and Allied Industries	Food, Drink & Tobacco Industries	Textiles, Footwear, Leather & Clothing	Total Other Manu- facturing	
	C,D,E	C	E	D	DF	DG	DJ	DK,DL,DM	DA	DB,DC	DD,DE,DH, DI, DN	
<b>2005 weights<sup>3</sup></b>	<b>172</b>	<b>25</b>	<b>15</b>	<b>133</b>	<b>2</b>	<b>15</b>	<b>14</b>	<b>40</b>	<b>20</b>	<b>3</b>	<b>37</b>	
2006	98.8	84.0	99.1	101.4	93.2	105.8	102.4	102.7	101.4	97.7	98.8	
2007	99.1	82.7	99.3	102.0	94.4	104.5	104.0	103.9	101.5	96.1	99.6	
2008	96.0	77.2	99.4	99.1	96.6	104.0	99.8	100.3	99.7	96.4	95.6	
Seasonally Adjusted												
2006	Q1	99.5	89.1	102.7	100.9	93.9	103.9	102.2	102.0	100.2	99.4	99.1
	Q2	98.6	83.2	98.9	101.3	93.4	105.7	102.4	103.1	100.9	97.8	98.3
	Q3	98.5	82.8	98.1	101.4	93.2	106.8	102.4	102.5	101.2	95.7	98.9
	Q4	98.5	80.7	96.8	102.0	92.5	107.0	102.5	103.1	103.2	98.1	99.0
2007	Q1	98.8	82.9	98.1	101.8	92.7	105.6	104.7	104.0	101.4	94.6	98.5
	Q2	99.3	83.5	97.8	102.3	95.5	104.4	104.4	104.3	101.9	96.3	99.7
	Q3	98.8	82.4	99.4	101.8	94.8	103.4	103.6	103.7	101.4	97.6	99.5
	Q4	99.3	82.0	102.0	102.2	94.8	104.7	103.4	103.8	101.3	95.8	100.6
2008	Q1	99.1	78.6	100.5	102.7	96.3	105.9	104.0	104.6	101.8	97.2	100.4
	Q2	97.8	78.3	100.5	101.1	98.7	105.0	103.1	103.2	99.9	97.9	97.7
	Q3	95.7	76.9	99.2	98.8	95.5	104.8	100.8	99.5	99.3	96.7	95.0
	Q4	91.4	75.0	97.3	93.7	95.9	100.5	91.3	94.1	97.9	93.8	89.3
2009	Q1	86.7	72.2	93.7	88.6	99.0	99.5	83.1	84.4	98.5	90.1	85.2
	Q2	86.3	71.8	90.3	88.5	90.1	100.2	80.4	84.5	98.5	88.5	86.2
<b>Percentage change, latest quarter on previous quarter</b>												
	-0.5	-0.6	-3.6	-0.1	-9.0	+0.7	-3.2	+0.1	+0.1	-1.8	+1.2	
<b>Percentage change, latest 4 quarters on previous 4 quarters<sup>4</sup></b>												
	-8.8	-7.9	-5.4	-9.4	-1.1	-3.3	-14.1	-12.7	-2.5	-5.0	-10.6	

1. Gross Value Added (GVA) is also referred to as Gross Domestic Product (GDP) at basic prices

2. Estimates cannot be regarded as accurate to the last digit shown

3. Weights may not sum to the totals due to rounding

4. This is a different measure from that shown in the ONS press release: the change to the latest quarter from the same quarter of previous year

**Table 6: Gross Value Added chained volume measures at basic prices:<sup>1,2</sup> detailed production industries**

Scotland, 2006 to 2009 Q2

2004=100

SIC 2003	Food, Drink and Tobacco Industries			Engineering and Allied Industries				Other Manufacturing			
	Total Food, Drink and Tobacco Industries	Food and Tobacco	Drink	Total Engineering and Allied Industries	Mechanical Engineering	Electrical and Instrument Engineering	Transport Equipment	Total Other Manufacturing Industries	Paper, Printing and Publishing	Other Manufacturing Industries	
	DA	DA15.1-DA15.8, DA16.0	DA15.9	DK-DM	DK	DL	DM	DD,DE,DH, DI, DN	DE	DD,DH,DI, DN	
<b>2004 weights<sup>3</sup></b>	<b>30</b>	<b>14</b>	<b>16</b>	<b>49</b>	<b>10</b>	<b>28</b>	<b>10</b>	<b>31</b>	<b>14</b>	<b>17</b>	
2006	100.9	97.6	103.7	94.6	101.2	85.3	114.7	99.3	89.4	107.2	
2007	103.5	97.2	108.9	97.4	109.4	85.5	119.3	98.4	85.1	109.1	
2008	105.0	97.3	111.8	98.0	106.2	86.3	123.1	92.6	79.7	102.8	
Seasonally Adjusted											
2006	Q1	98.7	97.6	99.7	94.8	99.4	89.5	105.3	100.8	92.8	107.2
	Q2	100.3	97.1	103.1	94.4	101.1	87.2	108.1	100.3	91.2	107.6
	Q3	101.8	98.0	105.0	93.4	100.2	81.7	120.0	98.7	87.9	107.3
	Q4	102.8	97.8	107.0	96.0	103.9	83.0	125.3	97.4	85.8	106.7
2007	Q1	102.6	97.4	107.2	95.8	108.2	83.4	118.5	98.5	86.0	108.4
	Q2	101.6	97.1	105.6	96.3	108.2	82.9	122.5	98.3	85.2	108.7
	Q3	104.1	97.1	110.2	96.3	108.4	84.2	118.5	98.2	85.0	108.7
	Q4	105.5	97.4	112.5	101.2	113.0	91.3	117.5	98.8	84.2	110.4
2008	Q1	106.3	98.5	113.1	98.2	104.2	88.5	119.9	96.8	84.1	107.0
	Q2	105.8	96.8	113.6	100.5	107.0	89.8	124.3	96.1	81.0	108.1
	Q3	105.7	97.4	112.9	96.3	106.3	83.5	122.6	92.0	79.1	102.3
	Q4	102.4	96.4	107.6	96.9	107.5	83.2	125.7	85.4	74.8	94.0
2009	Q1	99.6	91.9	106.3	88.0	94.6	76.3	115.1	79.5	70.1	87.0
	Q2	101.9	96.3	106.8	89.4	94.7	80.7	109.0	79.4	70.1	86.8
<b>Percentage change, latest quarter on previous quarter</b>											
		+2.3	+4.8	+0.4	+1.6	+0.1	+5.8	-5.3	-0.2	-0.0	-0.2
<b>Percentage change, latest 4 quarters on previous 4 quarters</b>											
		-2.9	-2.0	-3.5	-6.5	-6.8	-8.5	-1.7	-13.7	-12.1	-14.8

UK, 2006 to 2009 Q2

2004 = 100

SIC 2003	Food, Drink and Tobacco Industries			Engineering and Allied Industries				Other Manufacturing			
	Total Food, Drink and Tobacco Industries	Food and Tobacco	Drink	Total Engineering and Allied Industries	Mechanical Engineering	Electrical and Instrument Engineering	Transport Equipment	Total Other Manufacturing Industries	Paper, Printing and Publishing	Other Manufacturing Industries	
	DA	DA15.1-DA15.8, DA16.0	DA15.9	DK-DM	DK	DL	DM	DD,DE,DH, DI, DN	DE	DD,DH,DI, DN	
<b>2005 weights<sup>3</sup></b>	<b>20</b>	<b>16</b>	<b>4</b>	<b>40</b>	<b>11</b>	<b>15</b>	<b>15</b>	<b>37</b>	<b>17</b>	<b>20</b>	
2006	101.4	100.1	106.9	102.7	109.8	95.9	104.2	98.8	95.7	101.6	
2007	101.5	99.2	111.8	103.9	114.6	95.4	104.7	99.6	95.9	102.9	
2008	99.7	96.9	112.7	100.3	113.2	90.3	101.2	95.6	94.0	97.1	
Seasonally Adjusted											
2006	Q1	100.2	99.6	102.7	102.0	107.8	96.7	102.9	99.1	96.7	101.2
	Q2	100.9	99.6	106.6	103.1	109.9	97.2	104.1	98.3	94.4	101.8
	Q3	101.2	100.3	105.3	102.5	111.4	94.7	103.7	98.9	95.5	102.0
	Q4	103.2	101.0	113.1	103.1	110.3	95.0	106.0	99.0	96.2	101.5
2007	Q1	101.4	98.9	112.6	104.0	113.9	96.2	104.6	98.5	94.8	102.0
	Q2	101.9	100.2	109.7	104.3	113.6	95.4	106.5	99.7	95.7	103.3
	Q3	101.4	99.0	112.2	103.7	115.9	96.2	102.2	99.5	95.6	103.0
	Q4	101.3	98.8	112.8	103.8	115.1	93.9	105.5	100.6	97.7	103.2
2008	Q1	101.8	98.6	116.4	104.6	117.3	93.6	106.6	100.4	97.2	103.2
	Q2	99.9	96.7	114.6	103.2	116.0	91.6	105.7	97.7	95.4	99.8
	Q3	99.3	96.5	112.2	99.5	113.1	89.1	100.1	95.0	94.0	96.0
	Q4	97.9	95.8	107.5	94.1	106.5	86.7	92.4	89.3	89.3	89.3
2009	Q1	98.5	96.2	108.7	84.4	94.4	80.9	80.4	85.2	87.3	83.2
	Q2	98.5	96.0	110.0	84.5	91.4	80.2	83.6	86.2	88.2	84.3
<b>Percentage change, latest quarter on previous quarter</b>											
		+0.1	-0.2	+1.1	+0.1	-3.1	-0.9	+4.0	+1.2	+1.0	+1.3
<b>Percentage change, latest 4 quarters on previous 4 quarters<sup>4</sup></b>											
		-2.5	-2.2	-3.8	-12.7	-12.7	-10.3	-15.1	-10.6	-7.0	-13.8

1. Gross Value Added (GVA) is also referred to as Gross Domestic Product (GDP) at basic prices

2. Estimates cannot be regarded as accurate to the last digit shown

3. Weights may not sum to the totals due to rounding

4. This is a different measure from that shown in the ONS press release: the change to the latest quarter from the same quarter of previous year

Table 7: Gross Value Added chained volume measures at basic prices<sup>1,2</sup> by category of output

Scotland, 1963 to 2009 Q2

2004=100

SIC 2003	Total Gross Value Added	All Sectors excl. extraction of mineral oil & natural gas	Agriculture, Forestry and Fishing Total	Production and Construction				Service Sector				
				Production Sector		Construction		Total	Distribution Hotels and Catering	Transport, Storage and Communication	Business, Financial, Public and Other Services	
				Total	C-F	Total	Manufacturing					Total
<b>2004 weights</b>	<b>1000</b>	<b>992</b>	<b>15</b>	<b>243</b>	<b>178</b>	<b>141</b>	<b>65</b>	<b>742</b>	<b>140</b>	<b>70</b>	<b>533</b>	
1995	80.6	80.4	89.4	94.4	99.6	100.6	80.5	75.9	89.7	61.1	74.8	
1996	83.0	82.7	90.2	97.3	102.0	102.9	85.8	78.0	91.8	63.5	76.8	
1997	85.4	85.1	87.3	101.7	107.4	108.3	86.4	79.9	92.4	68.6	78.4	
1998	87.1	86.9	91.2	102.4	108.9	110.3	84.5	81.9	91.5	71.9	80.9	
1999	89.4	89.1	92.4	105.2	112.1	112.8	85.7	84.0	91.4	78.3	82.9	
2000	91.8	91.6	96.9	108.6	114.0	115.7	93.9	86.1	91.4	80.4	85.5	
2001	93.9	93.7	92.2	103.4	107.8	109.3	91.6	90.7	94.4	89.8	89.8	
2002	95.3	95.2	93.4	98.1	102.4	102.7	86.6	94.4	96.8	93.0	94.0	
2003	97.4	97.3	96.2	97.9	99.9	99.8	92.4	97.3	97.5	93.5	97.8	
2004	100.0	100.0	100.0	100.0	100.0	100.0	100.0	100.0	100.0	100.0	100.0	
2005	102.2	102.3	93.3	99.5	98.3	99.4	102.7	103.3	100.6	105.6	103.6	
2006	105.0	105.2	95.9	100.7	98.0	98.9	108.1	106.5	103.7	111.0	106.7	
2007	107.1	107.4	93.6	100.1	97.8	100.7	106.2	109.7	105.7	121.7	109.1	
2008	107.6	108.0	91.6	99.1	97.1	99.9	104.7	110.7	108.4	126.0	109.3	
2006	Q1	104.1	104.2	94.8	100.3	97.8	98.8	107.0	105.5	102.6	107.9	106.0
	Q2	104.6	104.8	96.1	100.2	97.8	98.6	106.9	106.2	104.3	108.9	106.4
	Q3	104.9	105.1	97.5	101.1	98.0	98.7	109.8	106.2	103.6	110.7	106.3
	Q4	106.3	106.6	95.4	101.1	98.2	99.5	108.9	108.2	104.2	116.3	108.2
2007	Q1	106.4	106.7	95.1	99.5	96.5	100.1	107.8	108.9	103.7	121.4	108.7
	Q2	106.8	107.2	94.2	100.9	98.6	100.1	107.3	109.0	105.7	119.8	108.5
	Q3	107.0	107.3	92.5	99.5	97.3	100.1	105.5	109.7	106.9	123.1	108.7
	Q4	108.1	108.5	92.6	100.3	98.8	102.6	104.2	111.0	106.6	122.7	110.6
2008	Q1	108.5	108.9	90.9	99.4	97.3	100.9	105.0	111.8	109.0	124.6	110.9
	Q2	108.8	109.1	92.1	100.6	98.4	101.8	106.6	111.8	109.8	127.0	110.3
	Q3	107.5	107.9	91.8	100.3	98.2	100.2	106.0	110.2	108.4	127.3	108.4
	Q4	105.6	106.0	91.6	96.3	94.5	96.7	101.0	109.0	106.4	125.2	107.5
2009	Q1	103.0	103.4	92.5	90.9	89.3	90.1	95.2	107.2	106.1	123.9	105.3
	Q2	102.2	102.6	92.6	88.9	87.6	89.9	92.5	106.8	105.0	122.2	105.2

1 Gross Value Added (GVA) is also referred to as Gross Domestic Product (GDP) at basic prices

2 Estimates cannot be regarded as accurate to the last digit shown

**Table 8: Revisions to data published on 22 July 2009 (Table 2)**

Scotland, 2006 to 2009 Q1

2004=100

SIC 2003	Total Gross Value Added	All Sectors excl. extraction of mineral oil & natural gas	Agriculture, forestry and fishing	Production Sector			Construction	Service Sector					
				Total	Mining and Quarrying Industries	Electricity, Gas and Water Supply		Manu-facturing	Total	Distribution, Hotels and Catering	Transport, Storage and Communication	Business Services and Finance	Government , and Other Services
	A-P	A-P excl 11.1	A,B	C,D,E	C	E	D	F	G-P	G,H	I	J,K	L-P
<b>2004 weights</b>	<b>1000</b>	<b>992</b>	<b>15</b>	<b>178</b>	<b>11</b>	<b>26</b>	<b>141</b>	<b>65</b>	<b>742</b>	<b>140</b>	<b>70</b>	<b>256</b>	<b>276</b>
2006	0.1	0.1	-	-	-	-	-	-	-	-	-	-	-
2007	0.1	0.1	-	-	-	-	1	-	-	-	-	-	-
2008	-	-	-	-	-1	-	1	-	-	-	-	-	-
Seasonally Adjusted													
2006	Q1	0.1	0.1	-	-	-	-	-	-	-	-	-	-
	Q2	-	-	-	-	-	-	-	-	-	-	-	-
	Q3	-	-	-	-	-	-	-	-	-	-	-	-
	Q4	0.1	0.1	-	-	-	-	-	-	-	-	-	-
2007	Q1	0.1	0.1	-	-	-	-	-	-	-	-	-	-
	Q2	0.1	0.1	-	1	-	1	-	-	1	-	-	-
	Q3	0.1	0.1	-	-	1	-1	-	-	-	-	-	-
	Q4	0.1	0.1	-	1	-	1	-	-	-	-	-	-
2008	Q1	-	-	-	-	-	-	-	-	-	-	-	-
	Q2	0.1	0.1	-	1	-	1	-	-	-	-	-	-
	Q3	-	-	-	-	-1	-1	-	-	-	-	-	-
	Q4	-	-	-	1	-1	1	-	-	-	-	-	-
2009	Q1	-0.1	-0.1	-	-	-1	-1	-	1	-	-	-	-

**Table 9: Revisions to data published on 22 July 2009 (Table 3)**

**Scotland, 2006 to 2009 Q1**

		<b>2004=100</b>						
		Retail & wholesale	Hotels & catering	Transport, Storage & Communication	Financial services	Real Estate & Business Services	Public Admin, Education and Health	Other services
<b>SIC 2003</b>		<b>G</b>	<b>H</b>	<b>I</b>	<b>J</b>	<b>K</b>	<b>L,M,N</b>	<b>O,P</b>
<b>2004 weights</b>		<b>106</b>	<b>33</b>	<b>70</b>	<b>79</b>	<b>177</b>	<b>221</b>	<b>55</b>
2006		-	-	-	-	-	-	-
2007		1	-	-	-	-	-	-1
2008		-	-	-	-1	-	-	-1
Seasonally Adjusted								
2006	Q1	-	-	-	-	-	-	-
	Q2	-	-	-	-	-	-	-
	Q3	-	-	-	-	-	-	-
	Q4	-	-	-	-	-	-	-
2007	Q1	1	-	-	-	-	-	-
	Q2	1	-	-	-	-	-	-1
	Q3	1	-	-	-	-	-	-1
	Q4	-	-	-	-	-	-	-1
2008	Q1	-	-	-	-1	1	-	-1
	Q2	1	-	-	-	-	-	-
	Q3	-	-	-	-	-	-	-1
	Q4	-	-	-	-1	-	-	-1
2009	Q1	-	-	-	-1	-	-	-2

**Table 10: Revisions to data published on 22 July 2009 (Table 4)**

**Scotland, 2006 to 2009 Q1**

**2004=100**

		Retail	Transport	Communications	Banking	Public Administration and Defence	Education	Health and Social
<b>SIC 2003</b>		<b>div 52</b>	<b>div 60-63</b>	<b>div 64</b>	<b>div 65.12/1</b>	<b>L</b>	<b>M</b>	<b>N</b>
<b>2004 weights</b>		<b>53</b>	<b>42</b>	<b>28</b>	<b>45</b>	<b>70</b>	<b>61</b>	<b>90</b>
2006		1	-	-	-	-	-	-
2007		1	-	-	-	-	-	-
2008		1	-	-	-	-	-	-
Seasonally Adjusted								
2006	Q1	1	-	-	-	-	-	-
	Q2	1	-	-	-	-	-	-
	Q3	1	-	-	-	-	-	-
	Q4	1	-	-	-	-	-	-
2007	Q1	1	-	-	-	-	-	-
	Q2	1	-	1	-	-	-	-
	Q3	1	-	-	-	-	-	-
	Q4	1	-	-	-	-	-	-
2008	Q1	1	-	-1	-	-	-	-
	Q2	1	-	1	-	-	-	-
	Q3	1	-	-	-	-	-	-
	Q4	1	-	-	-	-	-	-
2009	Q1	1	1	-1	-	-	-	-

**Table 11: Revisions to data published on 22 July 2009 (Table 5)**

Scotland, 2006 to 2009 Q1

2004=100

		<b>Manufacturing Industries</b>										
		<b>Total Producti on</b>	<b>Mining and Quarrying Industries</b>	<b>Electricity, Gas and Water Supply</b>	<b>Manu- facturing</b>	<b>Refined Petroleum Products and Nuclear Fuel</b>	<b>Chemicals &amp; Man-Made Fibres</b>	<b>Metals &amp; Metal Products</b>	<b>Engineering and Allied Industries</b>	<b>Food, Drink &amp; Tobacco Industries</b>	<b>Textiles, Footwear, Leather &amp; Clothing</b>	<b>Total Other Manufacturin g</b>
<b>SIC 2003</b>		<b>C,D,E</b>	<b>C</b>	<b>E</b>	<b>D</b>	<b>DF</b>	<b>DG</b>	<b>DJ</b>	<b>DK,DL,DM</b>	<b>DA</b>	<b>DB,DC</b>	<b>DD,DE,DH, DI,DN</b>
<b>2004 weights</b>		<b>178</b>	<b>11</b>	<b>26</b>	<b>141</b>	<b>2</b>	<b>13</b>	<b>12</b>	<b>49</b>	<b>30</b>	<b>4</b>	<b>31</b>
2006		-	-	-	-	-	-	-	-	-	-	-
2007		-	-	-	1	-	-	-	2	-1	-	-
2008		-	-1	-	1	-	-	-	2	-1	-	-
Seasonally Adjusted												
2006	Q1	-	-	-	-	-	-	-	-	-	-	-
	Q2	-	-	-	-	-	-	-	-	-	-	-
	Q3	-	-	-	-	-	-	-	-	-	-	-
	Q4	-	-	-	-	-	-	-	-	-	-	-
2007	Q1	-	-	-	-	-	-	-	-	-	-	-
	Q2	1	-	1	1	-	-	-	3	-1	-	-
	Q3	-	1	-1	-	-	-	-	2	-1	-	-
	Q4	1	-	-	1	-	-	-	2	-1	-	-
2008	Q1	-	-	-	-	-	-	-	1	-	-	-
	Q2	1	-	1	1	-	-	-	2	-1	-	-
	Q3	-	-1	-1	-	-	-	-	1	-1	-1	-
	Q4	1	-1	-	1	-	-	-	3	-	-	-
2009	Q1	-	-1	-1	-	-	-	-	2	-1	-	-

**Table 12: Revisions to data published on 22 July 2009 (Table 6)**

Scotland, 2006 to 2009 Q1

2004=100

SIC 2003	Total Food, Drink and Tobacco Industries	Food, Drink and Tobacco Industries		Total Engineering and Allied Industries	Engineering and Allied Industries			Total Other Manufacturing Industries	Other Manufacturing	
		Food and Tobacco	Drink		Mechanical Engineering	Electrical and Instrument Engineering	Transport Equipment		Paper, Printing and Publishing	Other Manufacturing Industries
		DA	DA15.1-DA15.8, DA16.0		DA15.9	DK-DM	DK		DL	DM
<b>2004 weights</b>	<b>30</b>	<b>14</b>	<b>16</b>	<b>49</b>	<b>10</b>	<b>28</b>	<b>10</b>	<b>31</b>	<b>14</b>	<b>17</b>
2006	-	-	-	-	-1	-	2	-	-	-
2007	-1	-	-1	2	-1	-	10	-	-	-
2008	-1	-	-1	2	-1	-	10	-	-	-
Seasonally Adjusted										
2006	Q1	-	-	1	-	-	-	-	-	-
	Q2	-	-	-	-	-	1	-	-	-
	Q3	-	-	-	-	-1	-	4	-	-
	Q4	-	-	-1	-	-1	-	4	-	-
2007	Q1	-	-	-1	-	-1	-	1	-	-
	Q2	-1	-	-1	3	-	-	15	-	-
	Q3	-1	-	-1	2	-1	-	10	-	-
	Q4	-1	-	-1	2	-1	-	13	-	-
2008	Q1	-	-	-1	1	-1	-	8	-	-
	Q2	-1	-	-1	2	-	-	9	-	-
	Q3	-1	-	-1	1	-1	-	8	-	-
	Q4	-	-	-1	3	-1	-	14	-	-
2009	Q1	-1	-1	-2	2	-	-	10	-	-

Table 13: Revisions to data published on 22 July 2009 (Table 7)

Scotland, 1963 to 2008 Q4

2004=100

SIC 2003	Total Gross Value Added	All Sectors excl. extraction of mineral oil & natural gas	Agriculture, Forestry and Fishing Total	Production and Construction				Service Sector				
				Production Sector			Construction	Total	Distribution Hotels and Catering	Transport, Storage and Communication	Business, Financial, Public and Other Services	
				Total	Total	Manufacturing	Total					
A-p	A-P excl 11.1	A,B	C-F	C,D,E	D	F	G-P	G,H	I	J-P		
2004 weights	1000	992	15	243	178	141	65	742	140	70	533	
1995	-0.1	-0.1	-	-1	-1	-1	-	-	-	-	-	
1996	-0.1	-0.1	-	-1	-1	-1	-	-	-	-	-	
1997	-0.1	-0.1	-	-1	-1	-1	-	-	-	-	-	
1998	-0.2	-0.2	-	-1	-1	-1	-	-	-	-	-	
1999	-0.2	-0.2	-	-1	-1	-1	-	-	-	-	-	
2000	-0.2	-0.2	-	-1	-1	-1	-	-	-	-	-	
2001	-0.2	-0.2	-	-	-1	-1	-	-	-	-	-	
2002	-	-	-	-	-	-	-	-	-	-	-	
2003	-	-	-	-	-	-	-	-	-	-	-	
2004	-	-	-	-	-	-	-	-	-	-	-	
2005	-	-	-	-	-	-	-	-	-	-	-	
2006	0.1	0.1	-	-	-	-	-	-	-	-	-	
2007	0.1	0.1	-	-	-	1	-	-	-	-	-	
2008	-	-	-	-	-	1	-	-	-	-	-	
2006	Q1 0.1	0.1	-	-	-	-	-	-	-	-	-	
	Q2 -	-	-	-	-	-	-	-	-	-	-	
	Q3 -	-	-	-	-	-	-	-	-	-	-	
	Q4 0.1	0.1	-	-	-	-	-	-	-	-	-	
2007	Q1 0.1	0.1	-	-	-	-	-	-	-	-	-	
	Q2 0.1	0.1	-	1	1	1	-	-	1	-	-	
	Q3 0.1	0.1	-	-	-	-	-	-	-	-	-	
	Q4 0.1	0.1	-	-	1	1	-	-	-	-	-	
2008	Q1 -	-	-	-	-	-	-	-	-	-	-	
	Q2 0.1	0.1	-	-	1	1	-	-	-	-	-	
	Q3 -	-	-	-	-	-	-	-	-	-	-	
	Q4 -	-	-	-	1	1	-	-	-	-	-	
2009	Q1 -0.1	-0.1	-	-	-	-	1	-	-	-	-	

# SCOTTISH GOVERNMENT STATISTICIAN GROUP

## OUR AIM

To provide relevant and reliable information, analysis and advice that meet the needs of government, business and the people of Scotland.

## OBJECTIVES

1. To produce statistics and analysis relevant to user needs by
  - Developing our understanding of customer requirements to ensure statistics are kept relevant and analysis is well targeted;
  - Developing the range of statistics and analysis we produce;
  - Where practicable improving timeliness;
  - Providing more statistics disaggregated by age, gender and ethnicity;
  - Developing more data for small areas through the Neighbourhood Statistics project;
  - Contributing to production of comparable statistics across the UK and internationally.
2. To ensure effective use of our statistics by
  - Contributing more directly to policy processes inside and where possible outside government;
  - Improving access to and presentation of data and analysis;
  - Improving the advice provided on statistics.
3. To work effectively with users and providers by
  - Maintaining arrangements to consult and involve users and providers;
  - Involving users and providers in planning developments in outputs and processes;
  - Minimising the burden on data providers through dropping or streamlining collections as appropriate, to ensure the benefits of the information justify the costs of collection.
4. To develop the quality of statistics by
  - Assuring and improving quality as an integral part of data collection and analysis and through regular reviews in line with National Statistics quality strategy;
  - Developing statistical methods, systems and classifications;
  - Working with the rest of the Government Statistical Service to develop joint approaches/solutions where appropriate.
5. To assure the integrity of statistics by
  - Maintaining and promoting integrity through implementation of the National Statistics Code of Practice and related protocols;
  - Safeguarding the confidentiality of data subjects.
6. To ensure the efficient and effective delivery of statistics products and services by
  - Making best use of all sources including administrative sources;
  - Working with other analysts to maximise the contribution of our own and other analysts' work;
  - Ensuring value for money;
  - Making best use of Information and Communications Technology;
  - Ensuring effective communication within the Statistician Group.
7. To develop our workforce and competences
  - Ensuring recruitment of staff with the necessary skills and potential;
  - Ensuring development of expertise amongst existing staff;
  - Promoting and upholding the standards of the statistics profession.

## This is a National Statistics publication

"This is a National Statistics publication. It has been produced to high professional standards set out in the National Statistics Code of Practice Protocol - see [www.statistics.gov.uk/about\\_ns/cop/default.asp](http://www.statistics.gov.uk/about_ns/cop/default.asp)

These statistics undergo regular quality assurance reviews to ensure that they meet customer needs. They are produced free from any political interference."

Details of pre-release access will be provided in the Scottish Government Statistics Website under 'Forthcoming Releases'

## Correspondence and enquiries

<p>Enquiries on Quarterly Gross Domestic Product should be addressed to:</p> <p>Richard Morrison Office of the Chief Economic Adviser Scottish Government Room 4.ER, St Andrews House Edinburgh, EH1 3DG Telephone: (0131) 244 3768; Fax: (0131) 244 2824 e-mail: richard.morrison@scotland.gsi.gov.uk</p>	<p>General enquiries on Scottish Government statistics can be addressed to:</p> <p>Niamh Laffan Office of the Chief Statistician Scottish Government 3 Floor West Rear, St Andrews House EDINBURGH EH1 3DG Telephone: (0131) 244 2223; Fax: (0131) 244 0335 e-mail: statistics.enquiries@scotland.gsi.gov.uk</p>
--	--

Advice on specific areas of Scottish Government statistical work can be obtained from staff at the telephone numbers given below:

Scottish Government Statistics contacts		Other contacts for Scottish statistics	
Schools – qualifications	(0131) 244 0315	Forestry Commission	(0131) 314 6337
Schools – pupils and teachers	(0131) 244 1689	The Scottish Funding Councils for Higher and Further Education	(0131) 313 6575
Further and Higher Education	(0141) 242 0273	General Register Office for Scotland - Vital statistics and publications - Population statistics, census statistics or digital boundary products	(0131) 314 4243 (0131) 314 4254
The Economy	(0131) 244 3330		
Labour market	(0141) 242 5446		
Business	(0141) 242 5446		
Income, Tax and Benefits	(0131) 244 2583		
Local government finance	(0131) 244 7033		
Environment	(0131) 244 0445		
Planning	(0131) 244 0439		
Equality	(0131) 244 0324		
Housing	(0131) 244 7236		
Transport	(0131) 244 7255		
Health	(0131) 244 3432		
Community Care	(0131) 244 3777		
Social Justice	(0131) 244 0442		
Scottish Government personnel	(0131) 244 3926		
Agricultural census and labour force	(0131) 244 6150		
Fisheries	(0131) 244 6441		
Courts and law	(0131) 244 2227		
Recorded crime	(0131) 244 2635		
Prisons	(0131) 244 2147		

For **general enquiries about National Statistics** in the United Kingdom Government contact the National Statistics Public Enquiry Service on

**+44 (0) 845 601 3034**  
minicom: +44 (0)1633 812399  
Email: info@statistics.gov.uk  
Fax: +44 (0)1633 652747

Letters: Customer Contact Centre, Room 1.015  
Office for National Statistics, Cardiff Road, Newport  
NP10 8XG

You can also find National Statistics on the internet - go to **www.statistics.gov.uk**

If you would like to be consulted about new or existing statistical collections or receive notification of forthcoming statistical publications, please register your interest on the Scottish Government ScotStat website at **www.scotland.gov.uk/scotstat**

Current contact points, e-mail addresses and the publications listed below as well as a range of other statistical publications can be found on the Scottish Government Web site at **www.scotland.gov.uk/stats**

Further information on the General Register Office for Scotland is available on the website **www.gro-scotland.gov.uk**

### Most recent Publications relating to the economy theme

Ref no.	Title	Last published	Price
	Scottish Manufactured Exports Estimates for the second quarter of 2009	07/10/2009	Free
	Gross Domestic Product for Scotland for the first quarter of 2009	22/07/2009	Free
	Scottish Manufactured Exports Estimates for the first quarter of 2009	01/07/2009	Free
	Government Expenditure And Revenue Scotland 2007-08	18/06/2009	Free
	Gross Domestic Product for Scotland for the fourth quarter of 2008	22/04/2009	Free
	Scottish Manufactured Exports Estimates for the fourth quarter of 2008	01/04/2009	Free

Additional copies of these publications may be purchased from **Scottish Government Publication Sales, Blackwell's Bookshop, 53 South Bridge, Edinburgh, EH1 1YS**, Telephone: 0131 622 8283 or 0131 622 8258, Fax: 0131 557 8149. Cheques should be made payable to 'Blackwell's Bookshop'.

### Complaints and suggestions

If you are not satisfied with our service, please write to the Chief Statistician, Mr Rob Wishart, 3R02, St Andrews House, Edinburgh, EH1 3DG, Telephone: (0131) 244 0302, e-mail rob.wishart@scotland.gsi.gov.uk. We also welcome any comments or suggestions that would help us to improve our standards of service.

Crown Copyright

Brief extracts from the Crown Copyright material in this publication may be reproduced provided the source is fully acknowledged.