

# Statistics Publication Notice

A National Statistics Publication for Scotland

16 September 2009



## **PUBLIC SECTOR EMPLOYMENT IN SCOTLAND: STATISTICS FOR 2<sup>nd</sup> QUARTER 2009**

Scotland's Chief Statistician today published statistics on **Public Sector Employment in Scotland**. The publication provides statistics up to Quarter 2 of 2009 and covers all of the public sector as defined by UK National Accounts. This release provides a complete quarterly series from Quarter 1 1999 onwards. The quarterly data in this publication are not seasonally adjusted and therefore comparisons between years should only be made for the same quarter. The statistics in this release are produced quarterly.

The publication includes information on public sector employment in Scotland with distinctions made for employment in devolved and reserved bodies.

### **SECTION 1 - TOTAL PUBLIC SECTOR EMPLOYMENT IN SCOTLAND**

This covers total public sector employment including employment in both Scottish devolved public bodies and UK Government Departments and UK wide public bodies with a presence in Scotland.

### **SECTION 2 - EMPLOYMENT IN CORE SCOTTISH GOVERNMENT, GOVERNMENT AGENCIES, NON MINISTERIAL DEPARTMENTS, PUBLIC CORPORATIONS, LOCAL GOVERNMENT AND DEVOLVED PUBLIC BODIES IN SCOTLAND**

This section focuses on employment in public authorities which are the devolved responsibility of the Scottish Government or Scottish Parliament. This includes the core Scottish Government and Agencies, local authorities, Police and Fire Services, NHS, Non-Departmental Public Bodies, Non-Ministerial Departments, Public Corporations, Ombudsmen and Commissioners and other significant national bodies.

### **SECTION 3 - EMPLOYMENT IN UK GOVERNMENT DEPARTMENTS AND UK WIDE PUBLIC BODIES WITH A PRESENCE IN SCOTLAND**

This section focuses on employment in Scotland in UK Government Departments and UK wide public bodies, with a presence in Scotland, which are reserved to the UK Parliament.

### **SECTION 4 - SIMPLIFYING THE PUBLIC SECTOR**

These statistics also cover employment within the 199 significant national public bodies which are the focus of the Scottish Government's Simplification Programme. The programme is committed to reducing the number of national public bodies by 25% by 2011. Quarterly updates will be provided in future bulletins.

Quarterly public sector employment statistics for the UK can be found on the UK Statistics Authority website at [www.statistics.gov.uk](http://www.statistics.gov.uk)

The statistics in this release are based on administrative records and surveys of individual public sector bodies. These surveys are carried out by the Scottish Government and the Office for National Statistics (ONS). An estimate of private sector employment is also included in this release. This is derived as the difference between the Labour Force Survey employment estimate for the whole of Scotland (not seasonally adjusted) and the public sector estimate.

#### **PUBLIC SECTOR FINANCIAL INSTITUTIONS**

***Royal Bank of Scotland (RBS) Group plc, Lloyds Banking Group plc and Northern Rock plc***

On 19 February 2009, the Office for National Statistics (ONS) announced that the Royal Bank of Scotland Group plc (RBS) and Lloyds Banking Group plc (previously Halifax Bank of Scotland plc and Lloyds TSB Group plc) would be classified as public corporations to take effect from 13 October 2008. As a result, employment estimates for these two banking groups have been included in the public sector employment series for the first time from Q1 2009, with revisions also made to include them in the Q4 2008 estimates.

Both RBS and Lloyds Banking Group have been included in a new category known as 'Public Sector Financial Institutions' along with Northern Rock which has already been included in the series from Q4 2007 following its earlier nationalisation. An aggregate estimate is available for these Public Sector Financial Institutions from Q4 2008 onwards in Tables 2 and 3. The size of these banking groups has the capacity to influence the aggregate public sector employment statistics with a step change in the series evident from Q4 2008. As a result, some secondary analysis is presented in Table 1 to provide users with a public sector employment series which excludes these Public Sector Financial Institutions allowing consistent comparisons to be made over time.

Further information on the reclassification of these banking groups to the public sector can be found in background note 13.

This publication is also the official release of Scottish Local Government employment statistics. These were previously published by the Scottish Government in the Joint Staffing Watch Survey. More detailed statistics on Local Government employment are available at [www.scotland.gov.uk/Topics/Statistics/Browse/Labour-Market/JointStaffingWatchSurvey](http://www.scotland.gov.uk/Topics/Statistics/Browse/Labour-Market/JointStaffingWatchSurvey) or on request

Comments on the presentation of these statistics should be sent to:  
[labour-market.statistics@scotland.gsi.gov.uk](mailto:labour-market.statistics@scotland.gsi.gov.uk).

## **MAIN POINTS**

### **SECTION 1**

#### **TOTAL PUBLIC AND PRIVATE SECTOR EMPLOYMENT IN SCOTLAND**

##### **Headcount**

- In quarter 2 (Q2) 2009, there were 614,700 people employed in the public sector. This includes employment in local government, core Scottish Government, Scottish Government Agencies, Non Ministerial Departments and devolved public bodies in Scotland as well as employment in UK Government Departments and UK wide public bodies with a presence in Scotland.
- There were 1,866,900 people employed in the private sector in Scotland.
- Total public sector employment has increased by 87,400 (16.6%) since Q2 1999 and increased by 38,400 (6.7%) since Q2 2008.
- Total public sector employment currently accounts for 24.8% of total employment in Scotland. This has increased from 23.1% in Q2 1999 and increased from 22.7% in Q2 2008.

##### **Impact of Public Sector Financial Institutions**

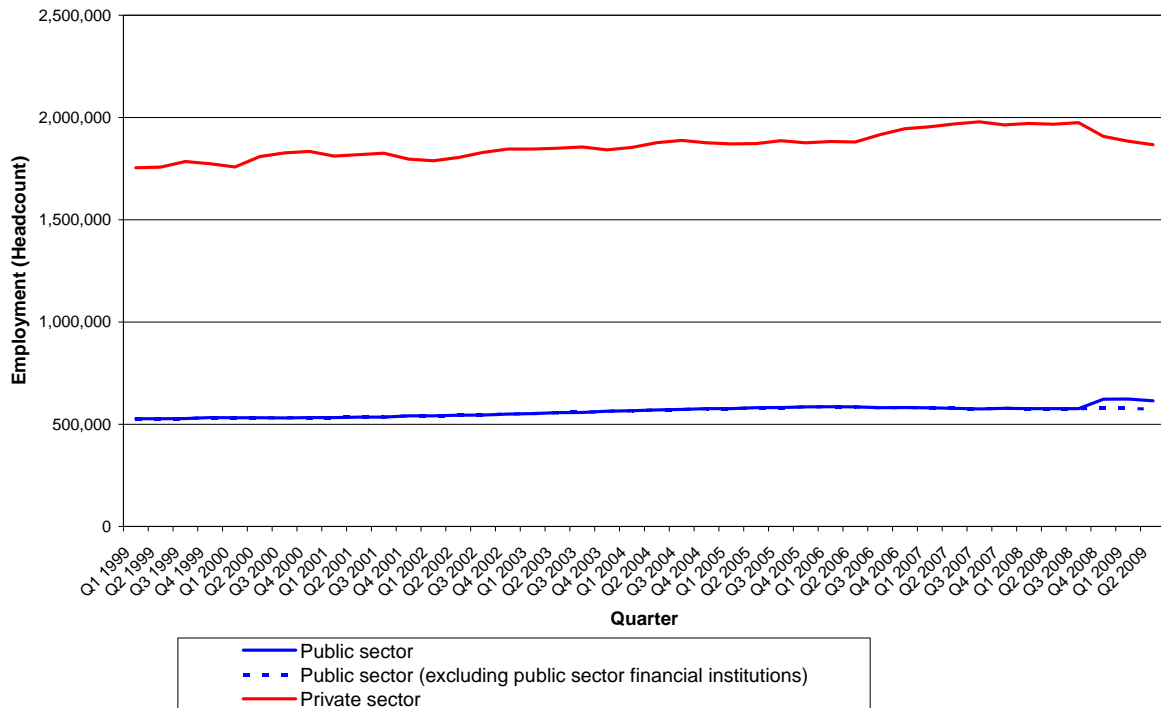
###### ***Royal Bank of Scotland Group plc, Lloyds Banking Group plc and Northern Rock plc***

- The large increase in public sector employment over the year is caused by the reclassification of RBS and Lloyds Banking Group as public corporations. If we exclude public sector financial institutions<sup>1</sup> from the series, there would be 572,200 people employed in the public sector, representing 23.1% of total employment in Scotland. Excluding these banking groups, public sector employment would have decreased by 4,200 (0.7%) over the year.
- The public sector financial institutions are classified as UK-wide public corporations as they are the responsibility of the UK Government. Hence the inclusion of these banking groups has no impact on the estimates for devolved public sector employment which is the responsibility of the Scottish Government or the Scottish Parliament. Commentary on the trends of devolved public sector employment can be found in section 2.

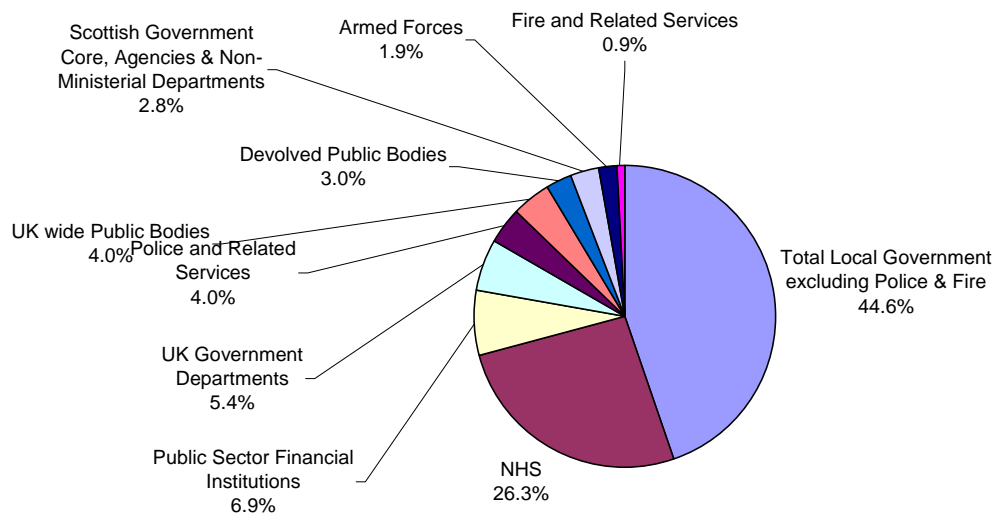
---

<sup>1</sup> Public Sector Financial Institutions includes: Royal Bank of Scotland Group plc, Lloyds Banking Group plc and Northern Rock plc.

**Chart 1: Total Public Sector and Private Sector Employment in Scotland, Headcount, 1999-2009**



**Chart 2: Breakdown of Total Public Sector Employment in Scotland, Headcount, Q2 2009**



**Note:**

1. Devolved public bodies includes devolved public corporations, devolved NDPBs and devolved other public bodies
2. UK wide public bodies includes UK wide public corporations, UK wide NDPBs and UK wide other public bodies with a presence in Scotland.

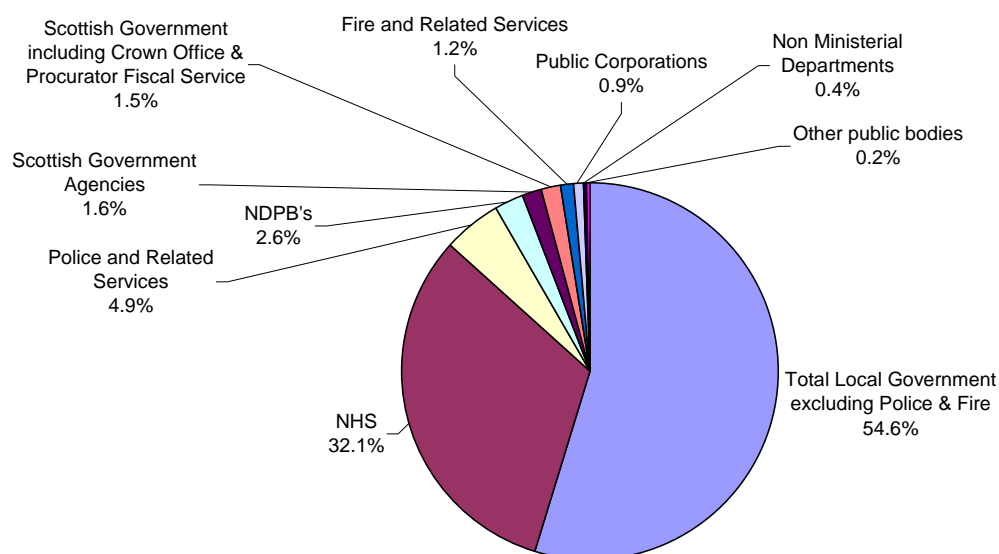
## SECTION 2

### EMPLOYMENT IN CORE SCOTTISH GOVERNMENT, GOVERNMENT AGENCIES, NON MINISTERIAL DEPARTMENTS, PUBLIC CORPORATIONS, LOCAL GOVERNMENT AND DEVOLVED PUBLIC BODIES IN SCOTLAND

*This section focuses on employment in public bodies which are the devolved responsibility of the Scottish Government or Scottish Parliament. It consists of:*

- Local Government including police and fire and related services
- Scottish Government including Crown Office and Procurator Fiscal Service
- Scottish Government Agencies
- Non Ministerial Departments
- Non Departmental Public Bodies
- Public Corporations
- NHS
- Other Public Bodies<sup>2</sup>

**Chart 3: Breakdown of Devolved Public Sector Employment in Scotland, Headcount, Q2 2009**



### Headcount

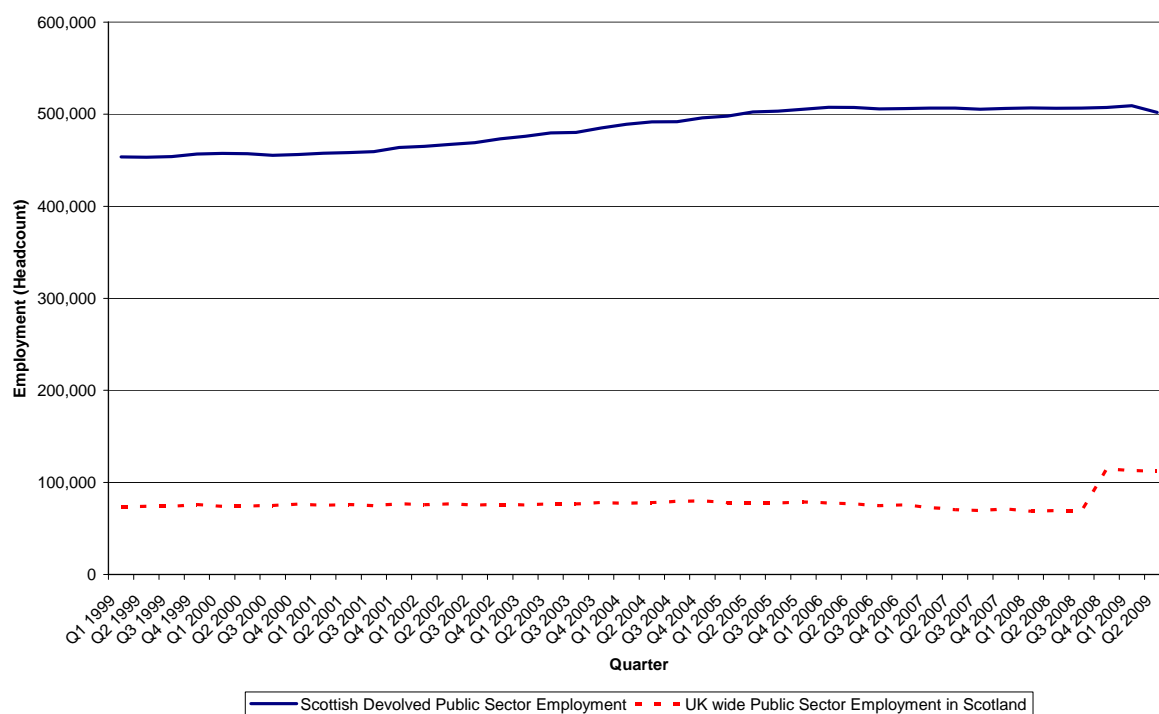
- In quarter 2 (Q2) 2009 there were 502,000 people employed in Scottish devolved public bodies. This is a decrease of 4,400 (0.9%) since Q2 2008.
- Of total (614,700) public sector employment in Scotland, 502,000 (81.7%) derives from bodies devolved to Scotland. The remaining 112,200 (18.3%) relates to

<sup>2</sup> Other Public Bodies includes the Scottish Public Services Ombudsman, Standards Commission for Scotland, Audit Scotland and Strathclyde Partnership for Transport.

employment in UK government departments and UK wide public bodies with a presence in Scotland, and 510 (0.1%) relates to the Scottish Parliamentary Corporate Body.

- Devolved public sector bodies currently account for 20.2% of total employment in Scotland. This has increased from 19.9% in Q2 2008.

**Chart 4: Employment in Scottish devolved public bodies (core Scottish Government, Government Agencies, Non Ministerial Departments, local government and devolved public bodies in Scotland) and UK wide public bodies, Headcount, 1999-2009**



## Full-time equivalent (FTE)

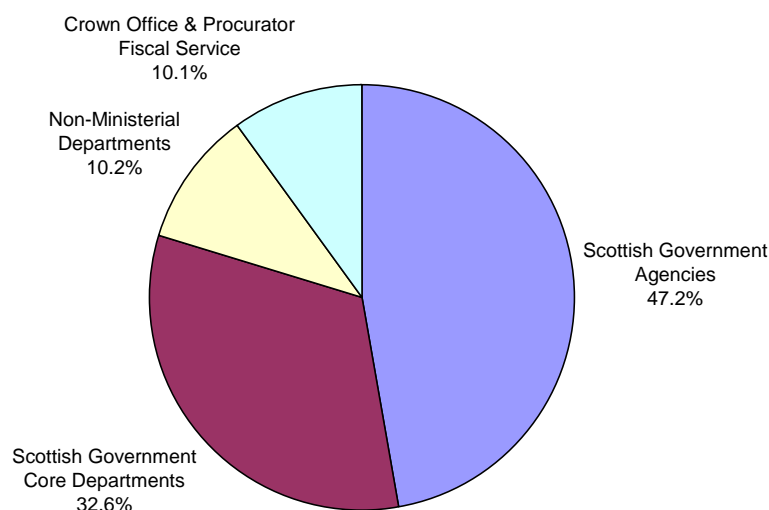
### Civil Service – Employment in core Scottish Government, Government Agencies and Non Ministerial Departments in Scotland (Full-Time Equivalent - FTE)

- The total number of full-time equivalent civil servants (including both permanent and casual staff) employed in Scotland was 16,700 in Q2 2009 (Table 3). This covers those working in the Scottish Administration, comprising Scottish Government core departments, Crown Office & Procurator Fiscal Service, Scottish Government Agencies and Non Ministerial Departments of the Scottish Administration (General Register Office, Registers of Scotland, and the Office of the Scottish Charity Regulator). This is an increase of 2.7% since Q2 2008.
- Non Ministerial Departments form part of the Scottish Administration but not the Scottish Government. In Q2 2009 there were 14,600 permanent staff employed by the Scottish Government, comprising Scottish Government core departments, Crown Office & Procurator Fiscal Service and Scottish Government Agencies (Table 5a). This is an increase of 2.9% since Q2 2008. Employment levels are

presented separately for the Scottish Prison Service and the Crown Office and Procurator Fiscal Service.

- As part of the Scottish Government's Simplification Programme, a number of agencies have been absorbed back into core Scottish Government departments. This accounts for increases in employment in Scottish Government core departments over the year from Q2 2008 to Q2 2009. This increase includes staff transferred from Communities Scotland, Scottish Agricultural Science Agency, Scottish Building Standards Agency, Fisheries Research Services, Scottish Fisheries Protection Agency and the Mental Health Tribunal Scotland. As a result of this staff movement, total staff figures for core Scottish Government and Government Agencies combined should be used. The figures for Scottish Government core staff alone are not comparable over the year as they now include staff who were previously classified as Agency staff in Q2 2008.
- In Q2 2009, there were 1,700 permanent staff employed by the General Register Office, Registers of Scotland, and the Office of the Scottish Charity Regulator. This is an increase of 1.7% since Q2 2008 (Table 5b).

**Chart 5: Breakdown of devolved Civil Service in Scotland, FTE, Q2 2009**  
*Permanent staff*

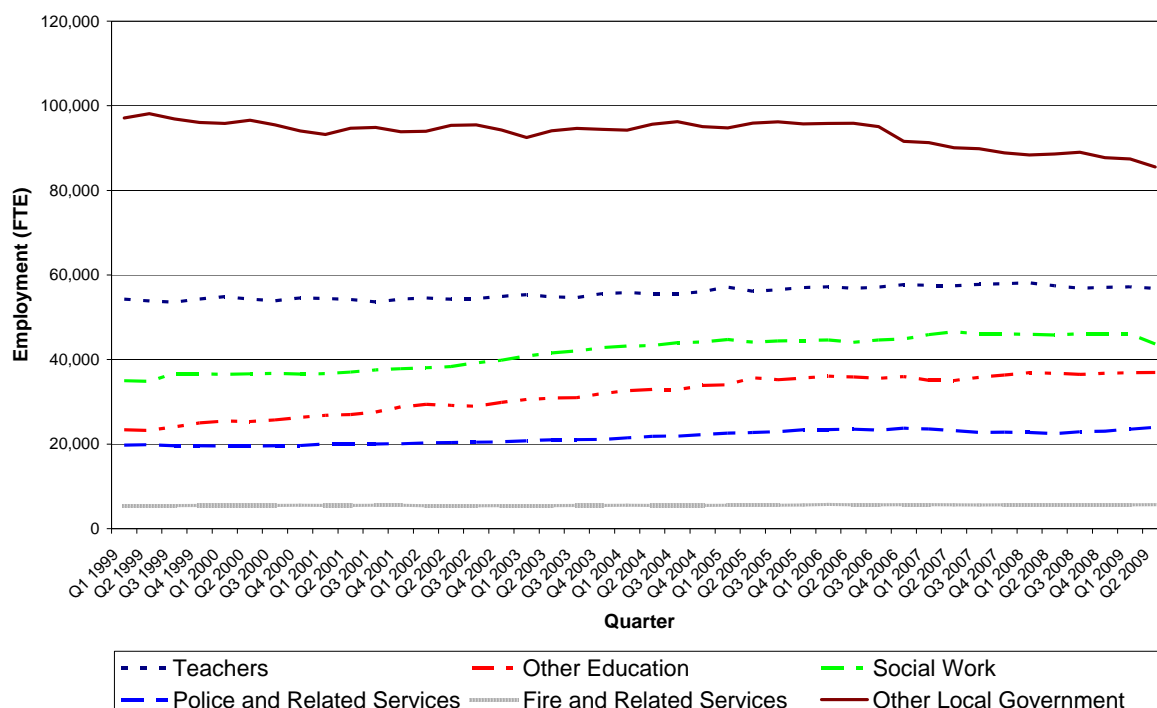


### **Local Government (Full-Time Equivalent - FTE)**

- Total full-time equivalent employment in Local Government (excluding Police, Fire and related services) was 223,000 in Q2 2009. This figure comprises: 56,800 teachers; 37,000 other education staff; 43,600 social work staff and 85,500 other staff.
- Total employment within Local Government (excluding Police, Fire and related services) has decreased by 5,600 (2.5%) since Q2 2008. This decrease is driven primarily by a large number of staff from Glasgow City Council transferring to Cordia Limited Liability Partnership.

- In Q2 2009 total employment in police and related services was 23,900 and total employment in fire and related services was 5,700.
- The number of teachers employed within Local Government has increased by 5.6% since Q2 1999 and decreased by 1.1% since Q2 2008.
- Other Education staff within Local Government has increased by 59.1% since Q2 1999 and increased by 0.6% over the year. Other Education staff include other staff within schools such as classroom assistants, music instructors, laboratory assistants, library staff, clerical staff etc.
- The number of Social Work staff working within Local Government has increased by 25.2% since Q2 1999 and decreased by 4.7% since Q2 2008. The decrease over the year is caused by a large number of staff from Glasgow City Council transferring to Cordia Limited Liability Partnership.
- The number of police and related services staff has increased by 20.6% since Q2 1999 and increased by 6.5% since Q2 2008. A number of central services provided to the Scottish police forces transferred to the new Scottish Police Services Authority (SPSA) from April 2007. As the SPSA is a Non-Departmental Public Body, staff employed in SPSA are included under NDPBs and not included in the total for Police and Related Services staff. A level shift in the data can be seen between Q1 2007 and Q2 2007 following the movement of staff to the SPSA on its inception. NDPB staffing numbers increase and Police and related services staffing numbers decrease between Q1 2007 and Q2 2007.
- The number of fire and related services staff has increased by 3.9% since Q2 1999 and increased by 0.9% since Q2 2008.
- The number of other Local Government staff has decreased by 12.9% since Q2 1999 and decreased by 3.5% since Q2 2008.

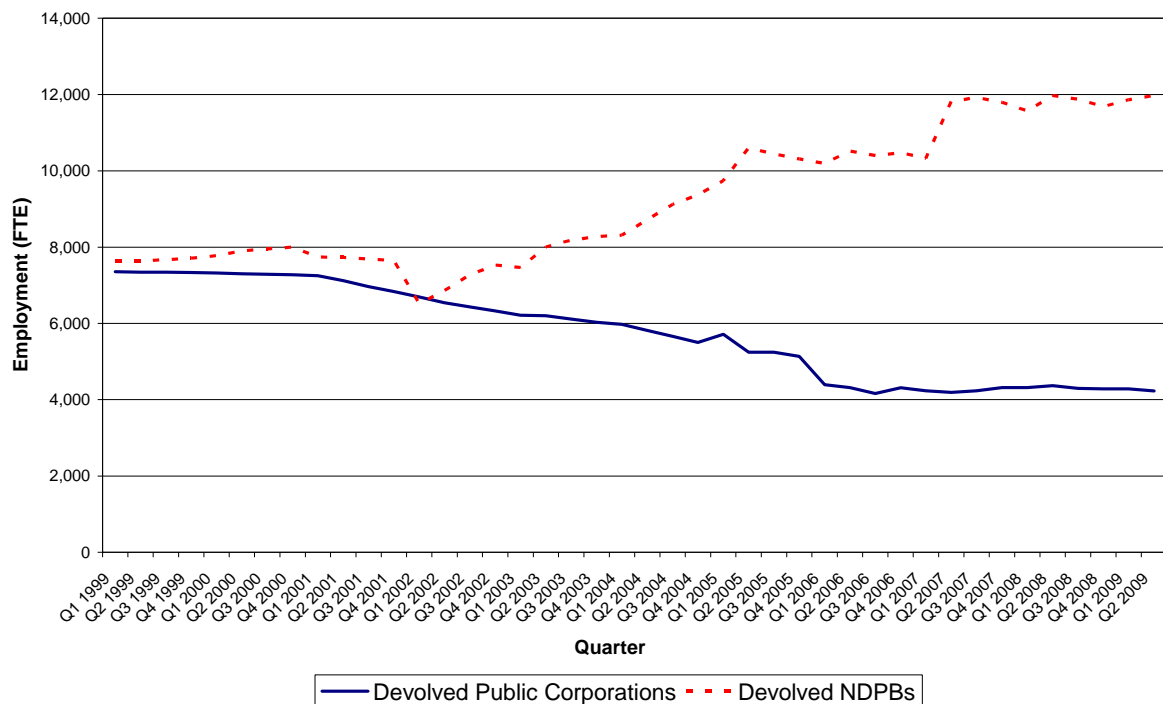
**Chart 6: Breakdown of employment in Local Government in Scotland, FTE, 1999-2009**



## Devolved Non-Departmental Public Bodies (NDPBs) and Public Corporations (Full-time equivalent – FTE)

- Changes in the number of staff employed by NDPBs and Public Corporations are caused by changes in the structure and staffing of individual organisations as well as the overall number of organisations falling within this category at any one time.
- The total number of full-time equivalent staff working in Scottish devolved NDPBs and Public Corporations was 16,200 in Q2 2009. This is a decrease of 0.8% since Q2 2008.
- In Q2 2009 there were 4,200 FTE staff employed by devolved Public Corporations. This is a decrease of 3.2% since Q2 2008.
- In Q2 2009 there were 12,000 FTE staff employed by devolved NDPBs. This is an increase of less than 0.1% since Q2 2008.

**Chart 7: Employment in devolved Public Corporations and devolved NDPBs in Scotland, FTE, 1999-2009**



## SECTION 3

### EMPLOYMENT IN UK GOVERNMENT DEPARTMENTS AND UK WIDE PUBLIC BODIES WITH A PRESENCE IN SCOTLAND

*This section focuses on the public sector bodies for which the UK Government has ministerial responsibility.*

#### Headcount

- In quarter 2 (Q2) 2009 there were 112,200 people employed in UK public bodies with a presence in Scotland. This is an increase of 38,200 (51.7%) since Q2 1999 and an increase of 42,800 (61.6%) since Q2 2008.
- The large increase in employment in UK public bodies (with a presence in Scotland) is caused by the reclassification of the Royal Bank of Scotland plc and Lloyds Banking Group plc as UK wide public corporations. In Q2 2009, there were 42,500 people employed in these Public Sector Financial Institutions including also Northern Rock. Excluding these public sector financial institutions, employment in UK public bodies (with a presence in Scotland) would be 69,700 which is an increase of 200 (0.4%) over the year.
- Employment in UK public bodies (with a presence in Scotland) currently accounts for 4.5% of total employment in Scotland. This has increased from 3.2% in Q2 1999 and 2.7% in Q2 2008.
- Chart 4 shows how employment in UK wide public bodies has changed since 1999.

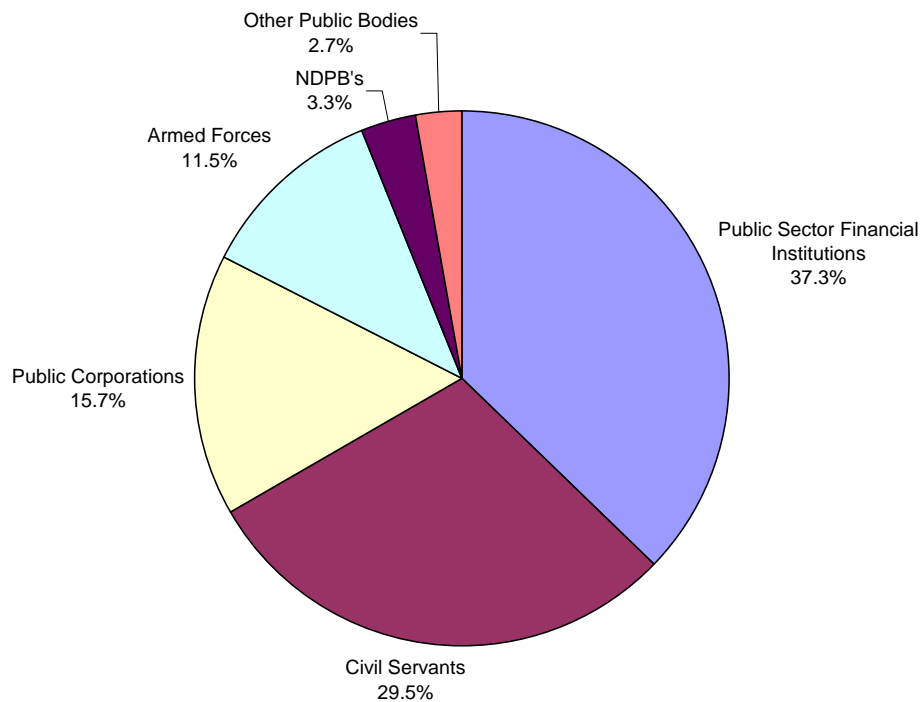
#### Full-time equivalent (FTE)

- Public sector employment in UK public bodies with a presence in Scotland consists of Armed Forces (11.5%); Civil Servants in UK Government Departments (29.5%), Public Corporations (15.7%), Non Departmental Public Bodies (3.3%), Public Sector Financial Institutions (37.3%) and Other Public Bodies<sup>3</sup> (2.7%).

---

<sup>3</sup> Other Public Bodies include the BBC, Forestry Commission and Electoral Commission.

**Chart 8: Breakdown of employment in UK public bodies with a presence in Scotland, FTE, Q2 2009**



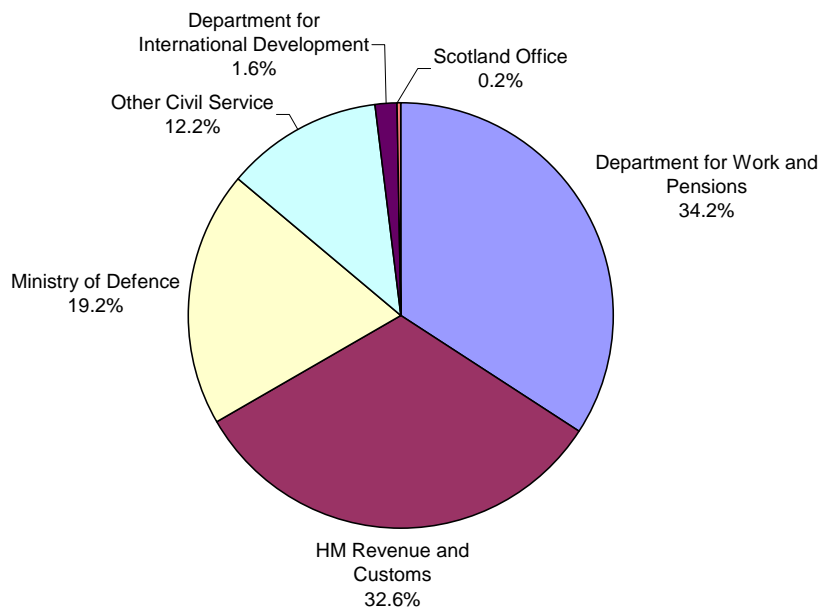
#### **Armed Forces (Full-time equivalent – FTE)**

- The total number of full-time equivalent staff in Scotland employed in the Armed Forces was 12,000 in Q2 2009. This is a decrease of 20.0% since Q2 1999 and a decrease of 0.9% since Q2 2008.

#### **Civil Service - UK Government Departments with a presence in Scotland (Full-time equivalent – FTE)**

- The total number of full-time equivalent civil servants employed in UK Government Departments with a presence in Scotland was 30,700 in Q2 2009. This covers staff working in the Ministry of Defence, HM Revenue and Customs, Department for Work and Pensions, Department for International Development, the Scotland Office and other Civil Service units with a presence in Scotland.
- Employment in UK Government Departments with a presence in Scotland has decreased by 3.0% since Q2 1999 and increased by 3.0% since Q2 2008.

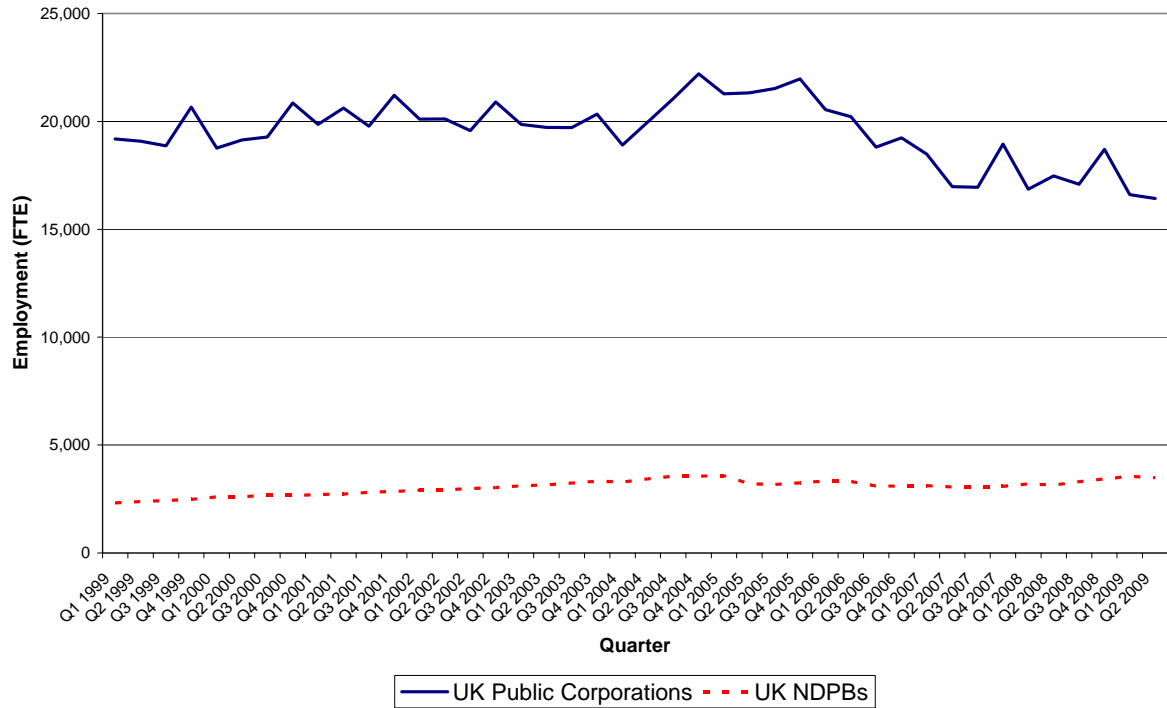
**Chart 9: Breakdown of employment in UK Government Departments with a presence in Scotland, FTE, Q2 2009**  
*Permanent staff*



**UK Non-Departmental Public Bodies (NDPBs) and Public Corporations with a presence in Scotland (Full-time equivalent – FTE)**

- Changes in the number of staff employed by NDPBs and Public Corporations are caused by changes in individual organisations staff structures/requirements as well as the overall number of organisations falling within this category at any one time.
- The total number of full-time equivalent staff working in UK wide NDPBs and Public Corporations with a presence in Scotland was 19,900 in Q2 2009. This is a decrease of 3.5% since Q2 2008.
- In Q2 2009 there were 16,400 FTE staff employed by UK wide Public Corporations. This is a decrease of 6.0% since Q2 2008.
- In Q2 2009 there were 3,500 FTE staff employed by UK wide NDPBs. This is an increase of 10.3% since Q2 2008.

**Chart 10: Employment in UK Public Corporations and UK NDPBs with a presence in Scotland, FTE, 1999-2009**



## SECTION 4

### **SIMPLIFYING THE PUBLIC SECTOR LANDSCAPE - Official Statistics**

On 30 January 2008, the Scottish Government announced in Parliament detailed plans to reshape Scotland's public bodies to make them more flexible, responsive and effective. As part of their national performance framework, the Scottish Government announced a National Indicator to reduce the number of Scottish public bodies by 25% by 2011. A baseline list of 199 public bodies has been published, against which progress will be measured and published on the Scotland Performs website:

<http://www.scotland.gov.uk/About/scotPerforms/indicators/reducePublicBodies>.

The vast majority of the significant national public bodies included in the Government's baseline list are included in the Public Sector Employment Statistics. Only 18 of the public bodies included in the baseline list are not included in the Public Sector Employment Statistics (Tables 1 to 7). These 18 public bodies are excluded as they fall below the employment threshold for inclusion or are outwith National Accounts definitions (see background note 6 for more information).

The official public sector employment estimates, based on National Accounts definitions, are provided in Tables 1 to 7. These should be used for official estimates of the total public sector in Scotland and for comparisons over time and with the UK.

The Simplification Programme Tracker provides details of how the public sector landscape has changed since October 2007, measured against the baseline position. Details of the public bodies included in each category in Table A can be found in the Simplification Tracker:

<http://www.scotland.gov.uk/Topics/Government/public-bodies/Simplification-Tracker>

Information on employment for the public bodies in the baseline list is provided in Table A below. This provides information on employment levels for the 199 public bodies which were operating as at the baseline position in 2007. The number of public sector bodies has fallen from the baseline of 199 bodies to 162 bodies, including 1 proposed body which has yet to become fully operational but is included on the baseline list. Quarterly updates to Table A will be provided in this bulletin.

**Table A: Employment for baseline list of public bodies, Headcount**  
OFFICIAL STATISTICS

|   | Q3 2007             | Q4 2008        | Q1 2009        | Q2 2009        |
|---|---------------------|----------------|----------------|----------------|
|   | * Baseline position |                |                |                |
| Executive Agencies                        | 8,910               | 8,400          | 8,610          | 8,230          |
| Non-Ministerial Departments               | 1,680               | 1,760          | 1,750          | 1,770          |
| Public corporations                       | 4,380               | 4,450          | 4,450          | 4,410          |
| Executive NDPBs                           | 12,890              | 12,610         | 12,820         | 12,920         |
| Advisory NDPBs                            | 100                 | 110            | 110            | 110            |
| Tribunals                                 | 10                  | 10             | 10             | 10             |
| Commissioners & Ombudsmen                 | 110                 | 100            | 100            | 110            |
| NHS bodies                                | 156,370             | 159,230        | 159,170        | 159,200        |
| Other significant national bodies         | 2,220               | 1,910          | 1,930          | 1,950          |
| <b>Total Employment</b>                   | <b>186,670</b>      | <b>188,580</b> | <b>188,950</b> | <b>188,710</b> |
| Total number of public sector bodies (N=) | 199                 | 162            | 162            | 161            |

Notes:

1. The baseline measures employment as at October 2007, or the nearest time point in the Quarterly Public Sector Employment Statistics (Q3 2007).
2. Some of the differences between the baseline and other quarters may be due to seasonal effects.
3. Figures rounded to the nearest ten.
4. Table A refers to total staff (permanent and casual).
5. Further information on the source and methodology for employment in NHS bodies can be found in background note 7.
- r. Figures have been revised since previous publication. For more information see background note 22.

## **INDEX OF TABLES**

### **NATIONAL STATISTICS**

Table 1 - *Number of people employed by main sector; Scotland 1999 to 2009*

Table 2 - *Public Sector Employment by Sector; Headcount*

Table 3 - *Public Sector Employment by Sector; Full-time equivalent*

Table 4a - *Employment (Permanent Staff Only): Scottish Government and Associated Agencies; Headcount*

Table 4b - *Employment (Permanent Staff Only): Other Civil Service in Scotland; Headcount*

Table 5a - *Employment (Permanent Staff Only): Scottish Government and Associated Agencies; Full-time equivalent*

Table 5b - *Employment (Permanent Staff Only): Other Civil Service in Scotland; Full-time equivalent*

Table 6 – *Employment: Local Government; Headcount*

Table 7 – *Employment: Local Government; Full-time equivalent*

### **BACKGROUND NOTES**

1. This regular series of quarterly Scottish Public Sector Employment Statistics includes results from the work of a cross-departmental project, led by ONS, to improve the quality and timeliness of public sector employment statistics. This publication includes the first publication of data for Quarter 2 2009. Historical data for some areas of public sector employment have been modelled using available data (see background note 4). Some figures from previous publications have been revised (see background note 22).
2. Tables 1 to 7 are the official source for national comparisons over time and comparisons with the UK.
3. An article summarising work carried out to improve estimates of public sector employment across the UK is accessible on the Office for National Statistics (ONS) website at the following address:  
<http://www.statistics.gov.uk/CCI/article.asp?ID=1095>

### **RESULTS FOR QUARTERS PRIOR TO Q1 2005**

4. Public sector data prior to Q1 2005 are based partly on estimates as actual data for all quarters are not available. Estimates prior to Q1 2005 are calculated based on available data for the following areas and time periods:
  - Quarters 2, 3 and 4 of each year prior to 2005 for the Civil Service excluding Ministry of Defence
  - Quarters 1, 2 and 4 of each year for the NHS
  - Quarters 1, 3 and 4 of each year prior to 2005 for the armed forces
  - All quarters prior to Q4 2004 for NDPBs and Public Corporations

## CONCEPTS, SOURCES AND DEFINITIONS

5. The public sector comprises central government, local government, and public corporations as defined for the UK National Accounts. The Sector Classifications Guide (MA23) provides information on the classification of organisations and institutions in the National Accounts.

<http://www.statistics.gov.uk/CCI/SearchRes.asp?term=ma23>

6. Public sector bodies with employment below the threshold of 20 staff are excluded from the Public Sector Employment series.
7. Data on NHS employment in Scotland for Q2 2009, as reported in Table 2 and Table 3, have been estimated using projections based on previous data. Information on employment in the NHS in Scotland is published by the Information Services Division (ISD) of NHS National Services Scotland and is available annually as at September each year (Q3). The projections model estimates NHS employment for Q1, Q2 and Q4. Information on the NHS workforce estimates published by ISD are available from:

<http://www.isdscotland.org/isd/796.html>

The NHS employment reported in Table A (section 4) is aggregated from employment in each of the following individual NHS bodies:

Mental Welfare Commission for Scotland  
National Waiting Times Centre Board  
NHS 24  
NHS Boards (14 Bodies)  
NHS Education for Scotland  
NHS Health Scotland Board  
NHS National Services Scotland  
NHS Quality Improvement Scotland  
Scottish Ambulance Service Board  
State Hospital Board for Scotland

The employment estimates for each individual NHS body are published by ISD as at Q3 each year. The projections model is not suitable to project employment for each individual body so the figures in Table A are only updated annually with the exception of the Mental Welfare Commission where figures are available quarterly.

Over the next quarter, we will be discussing with ISD the feasibility of obtaining quarterly NHS workforce estimates from their management information systems. This would be an improvement to the methodology by removing the need to use projections and would ensure we have quarterly NHS employment estimates overall and for each individual NHS body.

8. According to the National Accounts definition of the public sector General Medical Practitioners (GMP) and General Dental Practitioners (GDP) are not included in the public sector and are therefore not included in the figures in the publication.

However data on GMPs and GDPs are available and the table below shows the most recent data available.

**Data on GMPs and GDPs as at 30 September 2008**

|                               | Headcount | Full Time Equivalent |
|-------------------------------|-----------|----------------------|
| General Medical Practitioners | 4,916     | Not available        |
| General Dental Practitioners  | 2,703     | Not available        |

Source: ISD Scotland, Scottish Workforce Information Standard System (SWISS)

9. Local government comprises all government units with a local remit. It includes: Education teaching staff and Education other staff; Social Workers; Police and related services; Fire and related services; and other staff. Other staff contains: corporate services; central support; planning and economic development; housing; roads and transport; arts, sports and leisure; libraries, museums and galleries; trading standards; staff of district court; environmental services; Direct Labour Organisation (DLO) and Direct Service Organisation (DSO) staff. Joint Staffing Watch Survey data is collected based on those employed by Local Government organisations. Due to definitional issues, this data may differ from other sources of information for the individual sectors of Local Government. More information on these definitional issues can be found at: <http://www.scotland.gov.uk/Publications/2005/03/20889/55029>
10. Estimates for education teaching staff only include those paid and employed at the last pay period before the survey date of the Joint Staffing Watch Survey. Any changes in numbers of teaching staff will only be measured if they are included on the payroll at the survey date.
11. Public corporations are companies or quasi-corporations controlled by government. An example is the Post Office LTD. These companies receive more than half their income from sales of goods or services into the market place.
12. Public Corporations within this publication include Public Corporations based wholly in Scotland and UK wide Public Corporations with a presence in Scotland. Data for the UK wide Public Corporations with a presence in Scotland are estimated based on UK data and business survey information. This business survey information is updated in our series each year in Q3 which may result in step changes in the series.

The Public Corporations, as currently defined by the Office for National Statistics for National Account Purposes, which are based wholly in Scotland are:

Scottish Water  
David MacBrayne Ltd  
Highlands and Islands Airports LTD

The UK wide Public Corporations with a presence in Scotland are:

Civil Aviation Authority  
British Waterways  
The Financial Services Authority

The Crown Estate Commissioners  
Post Office LTD  
Horse Race Totalisator Board  
Tote Bookmakers  
Driving Standards Agency  
Vehicle and Operator Services  
Ordnance Survey  
Defence Support Group  
Army Base Repair Organisation  
The British Council  
Remploy LTD  
OFCOM  
Magnox Electric PLC  
Channel Four Television Corporation  
British Energy LTD  
British Energy Generation (UK) LTD  
\*Northern Rock PLC (reclassified to public sector October 2007)  
Northern Lighthouse Board  
Aberdeen Harbour Board

\* From Q4 2008, Northern Rock is included within the Public Sector Financial Institutions category, along with Royal Bank of Scotland Group and Lloyds Banking Group. Prior to Q4 2008, Northern Rock is included within the public corporation category to avoid disclosure.

13.A number of financial institutions are now included in the Public Sector Employment series as UK-wide public corporations.

The Public Sector Financial Institutions included in the Scottish Public Sector Employment Release are:  
Royal Bank of Scotland plc  
Lloyds Banking Group plc  
Northern Rock plc

Northern Rock has been included in the series from Q4 2007 following its earlier nationalisation. The Royal Bank of Scotland and Lloyds Banking Group have been included for the first time from Q1 2009, with revisions also made to include them in the Q4 2008 estimates. The inclusion of these financial institutions in the public sector employment estimates are based on a judgement that government has the ability to control the respective banks' general corporate policy through the conditions associated with the agreements signed relating to recapitalisation. These agreements contain unconditional covenants and contractual arrangements, which include: restrictions on the declaration and payment of any dividends or distributions; restrictions on Directors' remuneration; and obligations relating to lending. These decisions are consistent with international statistical guidelines on national accounts. National accounts classification decisions relate to control rather than ownership. The decisions have been authorised by the National Statistician.

14. The agencies included in the category for Other Scottish Government Agencies as published in Table 4a and Table 5a are:

Historic Scotland  
HM Inspectorate of Education  
Office of Accountant in Bankruptcy  
Scottish Court Service  
Scottish Public Pensions Agency  
Student Awards Agency for Scotland  
National Archive for Scotland  
Transport Scotland  
Social Work Inspection Agency  
Scottish Housing Regulator  
Disclosure Scotland

The Scottish Prison Service (SPS) is also a Government Agency. Figures are presented separately in Table 4a and Table 5a for the SPS as this is the largest Government Agency.

15. Following the Scottish Government's Simplification Programme the following changes have been since the previous publication:

|                                      |  |
|--------------------------------------|--|
| Fisheries Research Services          | On 1 April 2009, this agency was absorbed into the core Scottish Government. |
| Scottish Fisheries Protection Agency | On 1 April, this agency was absorbed into the core Scottish Government.      |
| The Mental Health Tribunal Scotland  | On 1 April, this agency was absorbed into the core Scottish Government.      |
| Disclosure Scotland                  | New agency established from 1 April 2009.                                    |

16. Some organisations do not fall into any of the sub categories used in this publication. These organisations are classified within the Other Public Bodies category in Table 2 and Table 3.

Devolved Other Public Bodies, as currently defined by the Office for National Statistics for National Accounts Purposes, include:

Scottish Public Services Ombudsman  
Standards Commission for Scotland  
Audit Scotland  
Strathclyde Partnership for Transport

UK wide Other Public Bodies with a presence in Scotland include:

British Broadcasting Corporation (BBC)  
Forestry Commission  
Electoral Commission

The Scottish Parliamentary Corporate Body is included under its own category in Table 2 and Table 3 as it is funded from the Scottish Consolidated Fund but they are not accountable to Scottish Ministers.

17. Data on Armed Forces for Q1 2006 onwards are provisional and subject to review, due to ongoing validation of data from the Defence Analytical Services Agency's (DASA) new Personnel Administration System (JPA).
18. Headcount estimates are based on the number of employees with an employment contract who are being paid by the organisation. Employees can be permanent, on a fixed-term contract or employed on a casual basis. Self-employed, contract workers, and agency workers are excluded.
19. As well as the headcount estimates, estimates have also been produced for the number of employees on a full-time equivalent (FTE) basis. This is based on converting part-time employees' hours into a full-time employee equivalent, and provides a better indicator of total labour input than a simple headcount.
20. Tables 4a, 4b, 5a and 5b contain data on Civil Service permanent staff only. The totals for Civil Service in tables 2 and 3 also include casual staff.
21. The statistics published here are derived from the relevant departments and devolved governments plus comprehensive quarterly surveys of the home Civil Service, Non-Departmental Public Bodies, and Public Corporations, carried out by ONS. The following list shows the data sources used to calculate total public sector employment.

### **Sources of Public Sector Employment estimates**

#### Central Government

*Department for Work and Pensions* – Direct and Civil Service Statistics, Office for National Statistics

*Department for International Development* – Direct and Civil Service Statistics, Office for National Statistics

*HM Revenue and Customs* – Direct and Civil Service Statistics, Office for National Statistics

*Other Central Government* – Civil Service Statistics, Office for National Statistics

#### Local Government

*Education Teachers* – Joint Staffing Watch Survey

*Education Others* – Joint Staffing Watch Survey

*Police and Related Services* – Joint Staffing Watch Survey

*Fire and Related Services* – Joint Staffing Watch Survey

*Social Work* – Joint Staffing Watch Survey

*Other staff* – Joint Staffing Watch Survey

National Health Service

Information Services Division, NHS  
National Services Scotland

|                                |  |
|--------------------------------|--|
| HM Forces                      | Ministry of Defence  |
| Public Corporations            | Office for National Statistics, Inter Departmental Business Register         |
| Non-Departmental Public Bodies | Direct, Office for National Statistics, Inter Departmental Business Register |

## REVISIONS

22. Data in this publication are revised where appropriate. These revisions are generally caused by revisions to other sources of data, such as the Labour Force Survey due to new population estimates, and revisions to the projections in health data, as actual data becomes available. However some revisions are unforeseen due to revisions in survey estimates provided to the Office for National Statistics and revisions based on more up to date data. All revisions are highlighted in the data tables.
23. As previously announced, the classification of the following public bodies are being investigated by ONS following a review of the classification of public bodies in Scotland. Details below:

### **Strathclyde Partnership for Transport (SPT)**

SPT is a Regional Transport Partnership established under the Transport (Scotland) Act 2005. There is currently some uncertainty over the classification of SPT as a public corporation. The Sector Classification team at ONS are currently investigating the classification of this body. Until a formal decision has been made by ONS, it has been decided to classify SPT within the 'Other Public Body' category. This is because the current public corporation figure for Scotland is significantly inflated by the inclusion of SPT. Latest estimates for Q2 2009 show that SPT has the following number of staff:

|     | Headcount | Full Time Equivalent |
|-----|-----------|----------------------|
| SPT | 720       | 700                  |

### **Audit Scotland**

The classification of Audit Scotland is also being investigated. ONS currently classify Audit Scotland as a public corporation which is inconsistent with the Scottish classification as a 'Devolved Other Public Body'.

It is expected that these issues will be resolved for next quarter and details will be provided in the next quarterly release.

24. A revisions policy outlining the timings of the different planned and unplanned revisions can be found at:  
<http://www.scotland.gov.uk/Publications/2006/12/PSERevisionsPolicy>

Any changes to the classifications (including SPT and Audit Scotland) and improvements to the methodology (NHS workforce figures) will be made in line with our revisions policy.

## **FUTURE PUBLICATIONS**

25. Public sector employment statistics will be published every quarter and the release timetable will be pre-announced in National Statistics Updates. The next quarterly first release will be published on the 16 December 2009.

26. The Scottish Government recently commissioned the Office for National Statistics to carry out a seasonal adjustment review of the Scottish Public Sector Employment estimates. We are currently reviewing the findings.

## **GENERAL**

27. Details of the policy governing the release of new data are available from the press office. Also available is a list of the names of those given pre-release access to the contents of this release.

Further details are available at <http://www.scotland.gov.uk/stats/bulletins/00761>

|   |  |
|---|--|
| Public enquiries (statistical) contact: | Denise Patrick 0141 278 8783<br>or 0300 244 6783 |
| Public enquiries (policy) contact:      | Colin Miller 0131 244 0980                       |
| Media enquiries contact:                | Michael Berry 0131 244 2967                      |

Date: September 16, 2009

Table 1. Number of people employed by main sector; Scotland 1999 to 2009 <sup>1,2,3</sup>  
Not Seasonally Adjusted, Headcount

|    |      | TOTAL                                       |               | PRIVATE SECTOR     |               | PUBLIC SECTOR      |               |                 |
|----|------|---|---------------|--------------------|---------------|--------------------|---------------|-----------------|
|    |      | Labour Force Survey Employment <sup>4</sup> | Annual Change | Level <sup>5</sup> | Annual Change | Level <sup>5</sup> | Annual Change | % Public Sector |
| Q1 | 1999 | 2,282,000                                   | ~             | 1,754,400          | ~             | 527,300            | ~             | 23.1%           |
| Q2 | 1999 | 2,284,000                                   | ~             | 1,756,900          | ~             | 527,300            | ~             | 23.1%           |
| Q3 | 1999 | 2,313,000                                   | ~             | 1,785,000          | ~             | 528,200            | ~             | 22.8%           |
| Q4 | 1999 | 2,306,000                                   | ~             | 1,773,100          | ~             | 532,900            | ~             | 23.1%           |
| Q1 | 2000 | 2,290,000                                   | 8,000         | 1,757,800          | 3,400         | 531,700            | 4,400         | 23.2%           |
| Q2 | 2000 | 2,341,000                                   | 56,000        | 1,808,800          | 52,000        | 531,700            | 4,300         | 22.7%           |
| Q3 | 2000 | 2,368,000                                   | 45,000        | 1,827,500          | 42,500        | 530,400            | 2,300         | 22.5%           |
| Q4 | 2000 | 2,367,000                                   | 61,000        | 1,834,100          | 61,000        | 532,900            | 100           | 22.5%           |
| Q1 | 2001 | 2,344,000                                   | 55,000        | 1,811,000          | 53,200        | 533,100            | 1,400         | 22.7%           |
| Q2 | 2001 | 2,353,000                                   | 13,000        | 1,818,700          | 9,900         | 534,600            | 2,900         | 22.7%           |
| Q3 | 2001 | 2,360,000                                   | 2,000         | 1,825,700          | -1,800        | 534,600            | 4,200         | 22.6%           |
| Q4 | 2001 | 2,330,000                                   | -29,000       | 1,796,500          | -27,500       | 541,000            | 8,100         | 23.1%           |
| Q1 | 2002 | 2,321,000                                   | -14,000       | 1,789,300          | -21,700       | 541,300            | 8,200         | 23.2%           |
| Q2 | 2002 | 2,349,000                                   | 5,000         | 1,804,500          | -14,300       | 544,100            | 9,500         | 23.2%           |
| Q3 | 2002 | 2,374,000                                   | 14,000        | 1,829,200          | 3,500         | 545,000            | 10,400        | 23.0%           |
| Q4 | 2002 | 2,395,000                                   | 58,000        | 1,845,500          | 48,900        | 549,700            | 8,700         | 23.0%           |
| Q1 | 2003 | 2,368,000                                   | 67,000        | 1,845,900          | 66,000        | 552,000            | 10,700        | 23.0%           |
| Q2 | 2003 | 2,407,000                                   | 58,000        | 1,849,900          | 45,500        | 557,000            | 12,900        | 23.1%           |
| Q3 | 2003 | 2,413,000                                   | 39,000        | 1,855,000          | 26,800        | 557,400            | 12,400        | 23.1%           |
| Q4 | 2003 | 2,405,000                                   | 10,000        | 1,841,800          | -3,700        | 563,700            | 14,000        | 23.4%           |
| Q1 | 2004 | 2,421,000                                   | 23,000        | 1,853,800          | 7,800         | 566,800            | 14,800        | 23.4%           |
| Q2 | 2004 | 2,448,000                                   | 41,000        | 1,877,800          | 27,700        | 570,400            | 13,300        | 23.3%           |
| Q3 | 2004 | 2,460,000                                   | 47,000        | 1,888,200          | 32,200        | 572,000            | 14,600        | 23.2%           |
| Q4 | 2004 | 2,454,000                                   | 48,000        | 1,877,100          | 35,300        | 576,500            | 12,800        | 23.5%           |
| Q1 | 2005 | 2,447,000                                   | 26,000        | 1,870,500          | 16,900        | 576,400            | 9,600         | 23.6%           |
| Q2 | 2005 | 2,454,000                                   | 6,000         | 1,873,200          | -4,400        | 580,600            | 10,200        | 23.7%           |
| Q3 | 2005 | 2,458,000                                   | 8,000         | 1,886,400          | -1,800        | 581,600            | 9,600         | 23.6%           |
| Q4 | 2005 | 2,462,000                                   | 8,000         | 1,877,200          | 100           | 584,500            | 8,000         | 23.7%           |
| Q1 | 2006 | 2,468,000                                   | 21,000        | 1,882,400          | 11,700        | 585,500            | 9,200         | 23.7%           |
| Q2 | 2006 | 2,465,000                                   | 12,000        | 1,880,800          | 7,600         | 584,400            | 3,900         | 23.7%           |
| Q3 | 2006 | 2,497,000                                   | 29,000        | 1,915,800          | 29,300        | 580,900            | -700          | 23.3%           |
| Q4 | 2006 | 2,527,000                                   | 65,000        | 1,944,700          | 67,500        | 582,000            | -2,500        | 23.0%           |
| Q1 | 2007 | 2,534,000                                   | 67,000        | 1,954,600          | 72,200        | 579,900            | -5,700        | 22.9%           |
| Q2 | 2007 | 2,547,000                                   | 81,000        | 1,969,100          | 88,300        | 577,600            | -6,800        | 22.7%           |
| Q3 | 2007 | 2,554,000                                   | 67,000        | 1,978,500          | 62,800        | 575,500            | -6,400        | 22.5%           |
| Q4 | 2007 | 2,543,000                                   | 16,000        | 1,964,600          | 19,900        | 578,100            | -3,900        | 22.7%           |
| Q1 | 2008 | 2,548,000                                   | 13,000        | 1,971,500          | 17,000        | 576,200            | -3,700        | 22.6%           |
| Q2 | 2008 | 2,544,000                                   | -3,000        | 1,967,200          | -1,900        | 576,300            | -1,300        | 22.7%           |
| Q3 | 2008 | 2,551,000                                   | 3,000         | 1,974,800          | -2,900        | 576,200            | 700           | 22.6%           |
| Q4 | 2008 | 2,530,000                                   | -13,000       | 1,907,200          | -57,300       | 622,700            | 44,600        | 24.6%           |
| Q1 | 2009 | 2,507,000                                   | -41,000       | 1,884,000          | -87,500       | 622,900            | 45,700        | 24.8%           |
| Q2 | 2009 | 2,482,000                                   | -62,000       | 1,886,900          | -100,300      | 614,700            | 38,400        | 24.8%           |

Sources: Labour Force Survey  
 Joint Shilling Match Survey  
 Information Services Division, NHS National Services Scotland  
 Quarterly Public Sector Employee Survey  
 Intra-Departmental Business Register, Office for National Statistics  
 Ministry of Defence  
 HM Revenue and Customs  
 Department for Work and Pensions  
 Department for International Development  
 Child Maintenance and Enforcement Commission  
 Civil Service Statistics

Notes:  
 1. Public sector figures include estimates for NHS. NHS quarterly workforce data are estimates based on the time period of actual annual data. Estimated data will be revised in future publications with the actual figures. For more information see background note 7.  
 2. Where quarterly data are not available the data are estimated from available data. More information can be found in background note 4.  
 3. Data based on National Accounts definition. For more information see background note 5.  
 4. LFS figures are rounded to the nearest thousand. Q1 data based on Feb - April quarter. Q2 data based on May - July quarter. Q3 data based on Aug - Oct quarter. Q4 data based on Nov - Jan quarter.  
 5. Figures have been rounded to the nearest hundred.  
 6. Figures have been revised since previous publication. For more information see background note 22.

SECONDARY ANALYSIS

The reclassification of a number of financial institutions to the public sector creates a step change in the time series from Q4 2008. This secondary analysis provides a comparable time series showing public sector employment excluding these financial institutions.

| PUBLIC SECTOR - Excluding public sector financial institutions<br>Royal Bank of Scotland Group plc, Lloyds Banking Group plc and Northern Rock plc |               |                       |
|--|---------------|-----------------------|
| Level <sup>6</sup>   | Annual Change | % Total Public Sector |
| 527,300  | ~             | 23.1%                 |
| 527,300  | ~             | 23.1%                 |
| 528,200  | ~             | 22.8%                 |
| 532,900  | ~             | 23.1%                 |
| 531,700  | 4,400         | 23.2%                 |
| 531,700  | 4,300         | 22.7%                 |
| 530,400  | 2,300         | 22.5%                 |
| 532,900  | 100           | 22.5%                 |
| 533,100  | 1,400         | 22.7%                 |
| 534,600  | 2,900         | 22.7%                 |
| 534,600  | 4,200         | 22.6%                 |
| 541,000  | 8,100         | 23.1%                 |
| 541,300  | 8,200         | 23.2%                 |
| 544,100  | 9,500         | 23.2%                 |
| 545,000  | 10,400        | 23.0%                 |
| 549,700  | 8,700         | 23.0%                 |
| 552,000  | 10,700        | 23.0%                 |
| 557,000  | 12,900        | 23.1%                 |
| 557,400  | 12,400        | 23.1%                 |
| 563,700  | 14,000        | 23.4%                 |
| 566,800  | 14,800        | 23.4%                 |
| 570,400  | 13,300        | 23.3%                 |
| 572,000  | 14,600        | 23.2%                 |
| 576,500  | 12,800        | 23.5%                 |
| 576,400  | 9,600         | 23.6%                 |
| 580,600  | 10,200        | 23.7%                 |
| 581,600  | 9,600         | 23.6%                 |
| 584,500  | 8,000         | 23.7%                 |
| 585,500  | 9,200         | 23.7%                 |
| 584,400  | 3,900         | 23.7%                 |
| 580,900  | -700          | 23.3%                 |
| 582,000  | -2,500        | 23.0%                 |
| 579,900  | -5,700        | 22.9%                 |
| 577,600  | -6,800        | 22.7%                 |
| 575,500  | -6,400        | 22.5%                 |
| 578,100  | -3,900        | 22.7%                 |
| 576,200  | -3,700        | 22.6%                 |
| 576,300  | -1,300        | 22.7%                 |
| 576,200  | 700           | 22.6%                 |
| 579,100  | 1,000         | 22.9%                 |
| 579,900  | 3,100         | 23.1%                 |
| 572,200  | -4,200        | 23.1%                 |

Table 2. Public Sector Employment by Sector; Headcount<sup>1,2,3,4</sup>

Total public sector covering both devolved public bodies in Scotland and UK government departments and UK wide public bodies with a presence in Scotland

|    |      | Devolved       |                     |        |                  |                             |                           |  | Total Devolved | UK government departments and UK wide public bodies |                           |                |                     |        | Total UK government departments and UK wide public bodies | Scottish Parliamentary Corporate Body | Total |   |
|----|------|----------------|---------------------|--------|------------------|-----------------------------|---------------------------|--|----------------|---|---------------------------|----------------|---------------------|--------|---|---------------------------------------|-------|---|
|    |      | Civil Servants | Public Corporations | NDPB's | NHS <sup>6</sup> | Police and Related Services | Fire and Related Services | Total Local Government excluding Police & Fire |                | Other Public Bodies <sup>5</sup>                    | Armed Forces <sup>5</sup> | Civil Servants | Public Corporations | NDPB's |   |                                       |       | Public Sector Financial Institutions <sup>7</sup> |
| 01 | 1999 | 14,600         | 7,500               | 8,300  | 129,000          | 20,400                      | 5,600                     | 267,400  | 780            | 453,600   | 14,800                    | 33,400         | 20,500              | 2,400  | 2,600   | 73,700                                | 30    | 527,300   |
| 02 | 1999 | 14,600         | 7,500               | 8,300  | 129,100          | 20,500                      | 5,600                     | 267,000  | 800            | 453,300   | 14,900                    | 33,500         | 20,400              | 2,500  | 2,600   | 74,000                                | 60    | 527,300   |
| 03 | 1999 | 14,600         | 7,500               | 8,300  | 129,700          | 20,100                      | 5,600                     | 267,400  | 820            | 454,100   | 15,000                    | 33,500         | 20,100              | 2,600  | 2,700   | 74,000                                | 80    | 528,200   |
| 04 | 1999 | 14,500         | 7,500               | 8,400  | 129,800          | 20,100                      | 5,600                     | 270,100  | 830            | 456,800   | 15,100                    | 33,500         | 22,000              | 2,600  | 2,800   | 76,000                                | 110   | 532,900   |
| 01 | 2000 | 14,400         | 7,500               | 8,400  | 129,800          | 20,000                      | 5,700                     | 270,800  | 840            | 457,500   | 15,100                    | 33,400         | 20,000              | 2,700  | 2,800   | 74,000                                | 140   | 531,700   |
| 02 | 2000 | 14,300         | 7,500               | 8,500  | 129,900          | 20,100                      | 5,600                     | 270,200  | 830            | 457,000   | 15,100                    | 33,400         | 20,400              | 2,700  | 2,900   | 74,500                                | 160   | 531,700   |
| 03 | 2000 | 14,200         | 7,500               | 8,600  | 130,100          | 20,200                      | 5,600                     | 268,300  | 830            | 455,400   | 15,000                    | 33,600         | 20,600              | 2,800  | 2,900   | 74,800                                | 190   | 530,400   |
| 04 | 2000 | 14,200         | 7,500               | 8,600  | 130,400          | 20,200                      | 5,600                     | 268,800  | 840            | 456,200   | 14,900                    | 33,600         | 22,200              | 2,800  | 3,000   | 76,500                                | 220   | 532,900   |
| 01 | 2001 | 14,300         | 7,400               | 8,400  | 130,800          | 20,500                      | 5,600                     | 269,900  | 870            | 457,800   | 14,700                    | 33,400         | 21,200              | 2,800  | 3,000   | 75,100                                | 250   | 533,100   |
| 02 | 2001 | 14,500         | 7,300               | 8,300  | 131,400          | 20,600                      | 5,600                     | 269,700  | 880            | 458,300   | 14,500                    | 33,700         | 22,000              | 2,900  | 3,000   | 76,000                                | 300   | 534,600   |
| 03 | 2001 | 14,700         | 7,100               | 8,300  | 132,100          | 20,600                      | 5,700                     | 270,000  | 870            | 459,500   | 14,200                    | 33,500         | 21,100              | 2,900  | 3,100   | 74,800                                | 330   | 534,600   |
| 04 | 2001 | 14,900         | 7,000               | 8,300  | 133,100          | 20,700                      | 5,600                     | 273,300  | 900            | 463,800   | 13,900                    | 34,300         | 22,700              | 3,000  | 3,100   | 76,800                                | 360   | 541,000   |
| 01 | 2002 | 15,100         | 6,900               | 7,000  | 134,200          | 20,900                      | 5,500                     | 274,500  | 910            | 465,100   | 13,600                    | 34,500         | 21,500              | 3,000  | 3,100   | 75,800                                | 380   | 541,300   |
| 02 | 2002 | 15,300         | 6,700               | 7,400  | 135,500          | 21,000                      | 5,500                     | 274,700  | 910            | 467,000   | 13,500                    | 35,500         | 21,500              | 3,000  | 3,200   | 76,600                                | 410   | 544,100   |
| 03 | 2002 | 15,400         | 6,800               | 7,800  | 136,800          | 21,100                      | 5,500                     | 274,900  | 920            | 469,100   | 13,400                    | 34,900         | 20,900              | 3,100  | 3,200   | 75,900                                | 440   | 545,000   |
| 04 | 2002 | 15,400         | 6,500               | 8,100  | 138,100          | 21,200                      | 5,600                     | 277,500  | 940            | 473,400   | 13,500                    | 33,800         | 22,300              | 3,200  | 3,200   | 75,900                                | 460   | 549,700   |
| 01 | 2003 | 15,500         | 6,400               | 8,000  | 139,400          | 22,100                      | 5,500                     | 278,200  | 960            | 476,100   | 13,600                    | 34,100         | 21,200              | 3,300  | 3,200   | 75,500                                | 460   | 552,000   |
| 02 | 2003 | 15,600         | 6,400               | 8,600  | 140,600          | 21,700                      | 5,600                     | 280,300  | 980            | 479,700   | 13,800                    | 35,400         | 21,100              | 3,300  | 3,300   | 76,800                                | 470   | 557,000   |
| 03 | 2003 | 15,700         | 6,300               | 8,800  | 141,700          | 21,700                      | 5,600                     | 279,400  | 1,000          | 480,300   | 14,000                    | 34,900         | 21,100              | 3,400  | 3,400   | 76,700                                | 480   | 557,400   |
| 04 | 2003 | 15,900         | 6,200               | 8,900  | 142,600          | 21,900                      | 5,700                     | 283,000  | 1,010          | 485,200   | 14,100                    | 35,400         | 21,700              | 3,500  | 3,400   | 78,100                                | 480   | 563,700   |
| 01 | 2004 | 16,000         | 6,100               | 9,000  | 143,400          | 22,400                      | 5,700                     | 285,600  | 1,030          | 489,100   | 14,100                    | 36,000         | 20,200              | 3,400  | 3,400   | 77,100                                | 480   | 566,800   |
| 02 | 2004 | 16,100         | 6,000               | 9,400  | 143,800          | 22,700                      | 5,600                     | 287,000  | 1,050          | 491,700   | 14,200                    | 35,800         | 21,300              | 3,600  | 3,300   | 78,200                                | 480   | 570,400   |
| 03 | 2004 | 16,200         | 5,800               | 9,800  | 144,100          | 22,700                      | 5,700                     | 286,800  | 1,060          | 492,000   | 14,100                    | 36,000         | 22,500              | 3,700  | 3,200   | 79,500                                | 480   | 572,000   |
| 04 | 2004 | 16,200         | 5,600               | 10,300 | 145,200          | 23,000                      | 5,600                     | 289,000  | 1,080          | 496,000   | 13,900                    | 35,600         | 23,600              | 3,700  | 3,200   | 80,100                                | 480   | 576,500   |
| 01 | 2005 | 16,600         | 5,900               | 10,600 | 146,100          | 23,300                      | 5,700                     | 289,000  | 1,070          | 498,000   | 13,300                    | 34,900         | 22,700              | 3,700  | 3,100   | 77,900                                | 490   | 576,400   |
| 02 | 2005 | 16,600         | 5,400               | 11,400 | 146,900          | 23,400                      | 5,700                     | 291,900  | 1,120          | 502,500   | 13,200                    | 35,100         | 22,800              | 3,400  | 3,100   | 77,600                                | 480   | 580,600   |
| 03 | 2005 | 16,600         | 5,400               | 11,200 | 148,000          | 23,700                      | 5,700                     | 291,600  | 1,110          | 503,400   | 12,900                    | 35,500         | 23,000              | 3,400  | 3,000   | 77,800                                | 500   | 581,600   |
| 04 | 2005 | 16,600         | 5,300               | 11,100 | 148,800          | 24,100                      | 5,700                     | 292,800  | 1,110          | 505,400   | 13,100                    | 35,500         | 23,500              | 3,400  | 3,100   | 78,700                                | 490   | 584,500   |
| 01 | 2006 | 16,600         | 4,500               | 11,000 | 149,700          | 24,200                      | 5,800                     | 294,600  | 1,060          | 507,500   | 13,500                    | 35,400         | 22,100              | 3,500  | 3,000   | 77,600                                | 490   | 585,500   |
| 02 | 2006 | 16,800         | 4,500               | 11,400 | 150,500          | 24,400                      | 5,800                     | 292,900  | 1,070          | 507,300   | 12,900                    | 35,700         | 21,700              | 3,500  | 2,900   | 76,600                                | 490   | 584,400   |
| 03 | 2006 | 16,600         | 4,300               | 11,300 | 152,200          | 24,200                      | 5,800                     | 290,400  | 1,050          | 505,800   | 12,800                    | 35,400         | 20,300              | 3,300  | 2,800   | 74,600                                | 500   | 580,900   |
| 04 | 2006 | 16,600         | 4,500               | 11,300 | 152,500          | 24,600                      | 5,800                     | 289,800  | 1,050          | 506,100   | 12,800                    | 35,200         | 21,400              | 3,200  | 2,800   | 75,400                                | 500   | 582,000   |
| 01 | 2007 | 16,600         | 4,400               | 11,200 | 153,400          | 24,600                      | 5,800                     | 289,800  | 1,040          | 506,700   | 12,600                    | 33,900         | 20,000              | 3,300  | 2,800   | 72,700                                | 510   | 579,900   |
| 02 | 2007 | 16,700         | 4,400               | 12,800 | 154,200          | 24,100                      | 5,800                     | 287,700  | 1,060          | 506,800   | 12,400                    | 33,500         | 18,400              | 3,200  | 2,900   | 70,300                                | 510   | 577,600   |
| 03 | 2007 | 16,700         | 4,400               | 13,000 | 155,700          | 23,600                      | 5,700                     | 285,300  | 1,050          | 505,500   | 12,200                    | 33,000         | 18,300              | 3,200  | 2,800   | 69,500                                | 510   | 575,500   |
| 04 | 2007 | 16,600         | 4,500               | 12,800 | 156,000          | 23,600                      | 5,800                     | 286,000  | 1,070          | 506,300   | 12,200                    | 32,800         | 20,200              | 3,200  | 2,800   | 71,300                                | 510   | 578,100   |
| 01 | 2008 | 16,800         | 4,500               | 12,500 | 156,800          | 23,600                      | 5,800                     | 286,000  | 1,090          | 507,000   | 12,000                    | 32,200         | 18,300              | 3,400  | 2,800   | 68,700                                | 520   | 576,200   |
| 02 | 2008 | 17,000         | 4,500               | 13,000 | 157,700          | 23,300                      | 5,800                     | 284,000  | 1,100          | 506,400   | 12,100                    | 32,100         | 19,000              | 3,300  | 3,000   | 69,400                                | 520   | 576,300   |
| 03 | 2008 | 17,000         | 4,500               | 12,900 | 159,000          | 23,800                      | 5,800                     | 282,800  | 1,080          | 506,700   | 12,000                    | 31,900         | 18,600              | 3,500  | 3,000   | 69,000                                | 510   | 576,200   |
| 04 | 2008 | 16,900         | 4,400               | 12,700 | 159,600          | 23,900                      | 5,800                     | 283,000  | 1,080          | 507,400   | 12,000                    | 32,400         | 20,200              | 3,600  | 3,000   | 71,800                                | 520   | 578,200   |
| 01 | 2009 | 17,200         | 4,400               | 12,900 | 160,500          | 24,400                      | 5,800                     | 283,100  | 1,090          | 509,300   | 12,000                    | 32,700         | 18,000              | 3,700  | 43,600  | 113,100                               | 520   | 622,900   |
| 02 | 2009 | 17,500         | 4,400               | 13,000 | 161,400          | 24,700                      | 5,800                     | 274,200  | 1,100          | 502,000   | 12,000                    | 33,200         | 17,800              | 3,600  | 42,500  | 112,200                               | 510   | 614,700   |

Sources: Joint Staffing Watch Survey  
Information Services Division, NHS National Services Scotland  
Quarterly Public Sector Employees Survey  
Inter-Departmental Business Register, Office for National Statistics  
Ministry of Defence  
HM Revenue and Customs  
Department for Work and Pensions  
Department for International Development  
Civil Service Statistics

Notes:  
1. Figures have been rounded to the nearest hundred, with the exception of devolved Other Public Bodies and Scottish Parliamentary Corporate Body which have been rounded to the nearest ten.  
2. Totals may not add to the sum of the parts due to rounding.  
3. Data based on National Accounts definition. For more information see background note 5.  
4. Where quarterly data are not available the data are estimated from available data. More information can be found in background note 4.  
5. Armed Forces data for Q1 refer to April, Q2 refer to July, Q3 refer to October and Q4 refer to January.  
Armed Forces data from Q1 2006 onwards are provisional and subject to review. More information can be found in background note 17.  
6. NHS quarterly workforce data are estimates based on the time series of actual annual data. Estimated data will be revised in future publications with the actual figures.  
For more information see background note 7.  
7. Public Sector Financial Institutions includes: Royal Bank of Scotland Group plc, Lloyds Banking Group plc and Northern Rock plc. More information can be found in background note 13.  
8. This includes public bodies which do not fall into any other sub-category. Other devolved public bodies includes: Scottish Public Services Ombudsman, Standards Commission for Scotland, Audit Scotland and Strathclyde Partnership for Transport. Other UK wide public bodies includes: BBC, Forestry Commission and Electoral Commission.  
1. Figures have been revised since previous publication. For more information see background note 22.

Table 3. Public Sector Employment by Sector: Full-time equivalent<sup>1,2,3,4</sup>

Total public sector covering both devolved public bodies in Scotland and UK government departments and UK wide public bodies with a presence in Scotland

|    |      | Devolved       |                     |        |                  |                             |                           |  | Total Devolved | UK government departments and UK wide public bodies |                           |                |                     |        | Total UK government departments and UK wide public bodies | Scottish Parliamentary Corporate Body | Total |   |
|----|------|----------------|---------------------|--------|------------------|-----------------------------|---------------------------|--|----------------|---|---------------------------|----------------|---------------------|--------|---|---------------------------------------|-------|---|
|    |      | Civil Servants | Public Corporations | NDPB's | NHS <sup>6</sup> | Police and Related Services | Fire and Related Services | Total Local Government excluding Police & Fire |                | Other Public Bodies <sup>5</sup>                    | Armed Forces <sup>5</sup> | Civil Servants | Public Corporations | NDPB's |   |                                       |       | Public Sector Financial Institutions <sup>7</sup> |
| Q1 | 1999 | 14,100         | 7,400               | 7,600  | 106,000          | 19,800                      | 5,500                     | 209,800  | 750            | 370,900   | 14,800                    | 31,800         | 19,200              | 2,300  | 2,400   | 70,500                                | 30    | 441,400   |
| Q2 | 1999 | 14,100         | 7,300               | 7,600  | 106,200          | 19,800                      | 5,500                     | 210,100  | 770            | 374,400   | 14,900                    | 31,700         | 19,100              | 2,400  | 2,500   | 70,600                                | 30    | 442,100   |
| Q3 | 1999 | 14,100         | 7,300               | 7,700  | 107,000          | 19,600                      | 5,500                     | 211,200  | 900            | 373,200   | 15,000                    | 31,600         | 18,900              | 2,400  | 2,500   | 70,500                                | 80    | 443,700   |
| Q4 | 1999 | 14,000         | 7,300               | 7,700  | 106,900          | 19,600                      | 5,500                     | 212,000  | 810            | 373,900   | 15,100                    | 31,600         | 20,700              | 2,500  | 2,600   | 72,400                                | 110   | 446,300   |
| Q1 | 2000 | 13,900         | 7,300               | 7,800  | 106,900          | 19,500                      | 5,500                     | 212,600  | 810            | 374,300   | 15,100                    | 31,500         | 18,800              | 2,600  | 2,600   | 70,600                                | 130   | 445,100   |
| Q2 | 2000 | 13,900         | 7,300               | 7,800  | 107,000          | 19,500                      | 5,500                     | 212,800  | 810            | 374,700   | 15,100                    | 31,600         | 19,100              | 2,600  | 2,700   | 71,100                                | 160   | 446,000   |
| Q3 | 2000 | 13,700         | 7,300               | 8,000  | 107,300          | 19,600                      | 5,500                     | 211,800  | 900            | 374,000   | 15,000                    | 31,600         | 19,300              | 2,700  | 2,700   | 71,500                                | 190   | 445,600   |
| Q4 | 2000 | 13,700         | 7,300               | 8,000  | 107,600          | 19,700                      | 5,500                     | 211,500  | 810            | 374,100   | 14,900                    | 31,900         | 20,900              | 2,700  | 2,800   | 73,100                                | 220   | 447,400   |
| Q1 | 2001 | 13,800         | 7,300               | 7,700  | 108,100          | 20,000                      | 5,500                     | 211,100  | 840            | 374,400   | 14,700                    | 31,800         | 19,900              | 2,700  | 2,800   | 71,800                                | 240   | 446,400   |
| Q2 | 2001 | 14,000         | 7,100               | 7,700  | 109,700          | 20,000                      | 5,500                     | 212,900  | 850            | 376,800   | 14,500                    | 32,000         | 20,600              | 2,700  | 2,800   | 72,600                                | 300   | 449,700   |
| Q3 | 2001 | 14,200         | 7,000               | 7,700  | 109,500          | 20,000                      | 5,500                     | 213,600  | 840            | 378,400   | 14,200                    | 31,800         | 19,800              | 2,800  | 2,900   | 71,400                                | 320   | 450,100   |
| Q4 | 2001 | 14,500         | 6,800               | 7,600  | 110,400          | 20,100                      | 5,500                     | 214,700  | 870            | 380,500   | 13,900                    | 32,500         | 21,200              | 2,800  | 2,900   | 73,300                                | 350   | 454,200   |
| Q1 | 2002 | 14,700         | 6,700               | 6,500  | 111,400          | 20,300                      | 5,400                     | 216,000  | 880            | 381,800   | 13,600                    | 32,600         | 20,100              | 2,900  | 2,900   | 72,100                                | 380   | 454,300   |
| Q2 | 2002 | 14,800         | 6,500               | 6,900  | 112,500          | 20,400                      | 5,400                     | 217,200  | 880            | 384,500   | 13,500                    | 33,700         | 20,100              | 2,900  | 3,000   | 73,100                                | 400   | 458,000   |
| Q3 | 2002 | 14,900         | 6,400               | 7,300  | 113,600          | 20,500                      | 5,400                     | 218,100  | 890            | 387,100   | 13,400                    | 33,000         | 19,600              | 3,000  | 2,900   | 71,900                                | 430   | 459,400   |
| Q4 | 2002 | 14,900         | 6,300               | 7,500  | 114,800          | 20,600                      | 5,400                     | 218,900  | 910            | 389,300   | 13,500                    | 31,900         | 20,900              | 3,000  | 2,900   | 72,200                                | 450   | 462,000   |
| Q1 | 2003 | 14,900         | 6,200               | 7,500  | 115,900          | 20,800                      | 5,400                     | 219,200  | 930            | 390,900   | 13,600                    | 32,200         | 19,900              | 3,100  | 3,000   | 71,800                                | 450   | 463,100   |
| Q2 | 2003 | 15,000         | 6,200               | 8,000  | 116,900          | 21,000                      | 5,500                     | 221,400  | 940            | 395,000   | 13,800                    | 33,400         | 19,700              | 3,200  | 3,100   | 73,100                                | 460   | 468,600   |
| Q3 | 2003 | 15,100         | 6,100               | 8,200  | 117,900          | 21,000                      | 5,500                     | 221,300  | 970            | 397,100   | 14,000                    | 32,900         | 19,700              | 3,200  | 3,200   | 73,000                                | 470   | 470,600   |
| Q4 | 2003 | 15,200         | 6,000               | 8,300  | 118,700          | 21,100                      | 5,500                     | 224,800  | 970            | 400,600   | 14,100                    | 33,600         | 20,300              | 3,300  | 3,100   | 74,300                                | 470   | 475,400   |
| Q1 | 2004 | 15,400         | 6,000               | 8,300  | 119,300          | 21,500                      | 5,500                     | 225,800  | 1,000          | 402,800   | 14,100                    | 34,000         | 18,900              | 3,300  | 3,100   | 73,500                                | 470   | 476,700   |
| Q2 | 2004 | 15,500         | 5,800               | 8,700  | 119,700          | 21,800                      | 5,500                     | 227,500  | 1,010          | 405,600   | 14,200                    | 33,600         | 20,000              | 3,400  | 3,100   | 74,400                                | 470   | 480,500   |
| Q3 | 2004 | 15,500         | 5,700               | 9,100  | 119,900          | 21,900                      | 5,500                     | 228,700  | 1,030          | 407,400   | 14,100                    | 33,900         | 21,100              | 3,600  | 3,000   | 75,600                                | 470   | 483,500   |
| Q4 | 2004 | 15,500         | 5,500               | 9,400  | 120,900          | 22,300                      | 5,500                     | 229,200  | 1,040          | 409,300   | 13,900                    | 33,600         | 22,200              | 3,600  | 2,900   | 76,200                                | 470   | 485,900   |
| Q1 | 2005 | 15,900         | 5,700               | 9,700  | 121,700          | 22,600                      | 5,600                     | 230,600  | 1,040          | 412,900   | 13,300                    | 32,800         | 21,300              | 3,600  | 2,900   | 73,900                                | 480   | 487,300   |
| Q2 | 2005 | 16,000         | 5,200               | 10,600 | 122,400          | 22,700                      | 5,500                     | 231,800  | 1,050          | 415,400   | 13,200                    | 32,900         | 21,300              | 3,200  | 2,900   | 73,600                                | 470   | 489,500   |
| Q3 | 2005 | 16,000         | 5,200               | 10,400 | 123,300          | 22,800                      | 5,500                     | 232,300  | 1,060          | 416,700   | 12,900                    | 33,200         | 21,500              | 3,200  | 2,800   | 73,700                                | 490   | 490,900   |
| Q4 | 2005 | 15,800         | 5,100               | 10,300 | 124,100          | 23,400                      | 5,600                     | 232,900  | 1,060          | 418,200   | 13,100                    | 33,200         | 22,000              | 3,200  | 2,900   | 74,400                                | 480   | 493,100   |
| Q1 | 2006 | 15,900         | 4,400               | 10,200 | 124,800          | 23,400                      | 5,700                     | 233,700  | 1,010          | 419,200   | 13,500                    | 33,100         | 20,500              | 3,300  | 2,900   | 73,300                                | 480   | 493,000   |
| Q2 | 2006 | 16,100         | 4,300               | 10,500 | 125,600          | 23,500                      | 5,600                     | 232,600  | 1,020          | 419,400   | 12,900                    | 33,200         | 20,200              | 3,300  | 2,800   | 72,500                                | 480   | 492,300   |
| Q3 | 2006 | 15,900         | 4,200               | 10,400 | 127,000          | 23,300                      | 5,700                     | 232,400  | 1,000          | 419,800   | 12,800                    | 33,000         | 19,800              | 3,100  | 2,800   | 70,400                                | 490   | 490,600   |
| Q4 | 2006 | 15,800         | 4,300               | 10,500 | 127,400          | 23,700                      | 5,700                     | 230,100  | 990            | 418,500   | 12,800                    | 32,700         | 19,200              | 3,100  | 2,700   | 70,500                                | 480   | 489,500   |
| Q1 | 2007 | 15,800         | 4,200               | 10,300 | 128,200          | 23,600                      | 5,700                     | 229,800  | 990            | 418,600   | 12,800                    | 31,600         | 18,500              | 3,100  | 2,800   | 68,500                                | 490   | 487,500   |
| Q2 | 2007 | 16,000         | 4,200               | 11,800 | 129,000          | 23,200                      | 5,600                     | 229,100  | 1,010          | 419,900   | 12,400                    | 31,200         | 17,000              | 3,100  | 2,700   | 66,300                                | 490   | 486,700   |
| Q3 | 2007 | 15,900         | 4,200               | 11,900 | 130,300          | 22,700                      | 5,600                     | 229,500  | 1,000          | 421,200   | 12,200                    | 30,700         | 16,900              | 3,100  | 2,700   | 65,600                                | 490   | 487,300   |
| Q4 | 2007 | 15,900         | 4,300               | 11,800 | 130,500          | 22,800                      | 5,700                     | 229,300  | 1,010          | 421,200   | 12,200                    | 30,500         | 18,900              | 3,100  | 2,700   | 67,400                                | 500   | 489,100   |
| Q1 | 2008 | 16,000         | 4,300               | 11,600 | 131,300          | 22,700                      | 5,700                     | 229,300  | 1,030          | 421,900   | 12,000                    | 30,000         | 16,900              | 3,200  | 2,700   | 64,700                                | 500   | 487,100   |
| Q2 | 2008 | 16,200         | 4,400               | 12,000 | 132,100          | 22,500                      | 5,600                     | 228,600  | 1,040          | 422,400   | 12,100                    | 29,600         | 17,500              | 3,200  | 2,600   | 65,300                                | 500   | 488,200   |
| Q3 | 2008 | 16,200         | 4,300               | 11,900 | 133,100          | 22,800                      | 5,600                     | 228,400  | 1,040          | 423,400   | 12,000                    | 29,700         | 17,100              | 3,300  | 2,600   | 64,900                                | 490   | 488,800   |
| Q4 | 2008 | 16,200         | 4,300               | 11,700 | 133,700          | 23,100                      | 5,600                     | 227,800  | 1,050          | 423,200   | 12,000                    | 30,000         | 18,700              | 3,400  | 2,800   | 106,800                               | 490   | 530,500   |
| Q1 | 2009 | 16,400         | 4,300               | 11,900 | 134,500          | 23,500                      | 5,600                     | 227,500  | 1,020          | 424,700   | 12,000                    | 30,100         | 16,600*             | 3,500* | 3,000   | 104,800*                              | 490   | 530,000*  |
| Q2 | 2009 | 16,700         | 4,200               | 12,000 | 135,300          | 23,900                      | 5,700                     | 223,000  | 1,060          | 421,800   | 12,000                    | 30,700         | 16,400              | 3,500  | 3,000   | 104,400                               | 490   | 526,600   |

Sources: Joint Staffing Varch Survey  
Information Services Division, NHS National Services Scotland  
Quarterly Public Sector Employees Survey  
Inter-Departmental Business Register, Office for National Statistics  
Ministry of Defence  
HM Revenue and Customs  
Department for Work and Pensions  
Department for International Development  
Civil Service Statistics

Notes:

1. Figures have been rounded to the nearest hundred, with the exception of devolved Other Public Bodies and Scottish Parliamentary Corporate Body which have been rounded to the nearest ten.

2. Totals may not add to the sum of the parts due to rounding.

3. Data based on National Accounts definition. For more information see background note 5.

4. Where quarterly data are not available the data are estimated from available data. More information can be found in background note 4.

5. Armed Forces data for Q1 refer to April, Q2 refer to July, Q3 refer to October and Q4 refer to January.

6. NHS quarterly workforce data are provisional and subject to review. More information can be found in background note 7.

7. NHS quarterly workforce data are estimates based on the time series of actual annual data. Estimated data will be revised in future publications with the actual figures.

8. For more information see background note 7.

9. Public Sector Financial Institutions includes: Royal Bank of Scotland Group plc, Lloyds Banking Group plc and Northern Rock plc. More information can be found in background note 13.

10. This includes public bodies which do not fall into any other sub-category. Other devolved public bodies includes: Scottish Public Services Ombudsman, Standards Commission for Scotland, Audit Scotland and Strathclyde Partnership for Transport. Other UK wide public bodies includes: BBC, Forestry Commission and Electoral Commission.

11. Figures have been revised since previous publication. For more information see background note 22.

Table 4 (a). Employment (Permanent Staff Only): Core Scottish Government and Government Agencies; Headcount<sup>1,2,3</sup>

|    |      | Scottish<br>Government Core<br>Departments (excl<br>Agencies) <sup>4</sup> | Crown Office<br>and Procurator<br>Fiscal | Scottish Government Agencies |   | Total  |
|----|------|--|--|------------------------------|---|--------|
|    |      |  |  | Scottish Prison<br>Service   | Other Scottish<br>Agencies <sup>5</sup> |        |
| Q1 | 1999 | 3,800  | 1,100                                    | 4,900                        | 2,800                                   | 12,600 |
| Q2 | 1999 | 3,800  | 1,200                                    | 4,900                        | 2,800                                   | 12,600 |
| Q3 | 1999 | 3,900  | 1,200                                    | 4,800                        | 2,700                                   | 12,600 |
| Q4 | 1999 | 3,900  | 1,200                                    | 4,700                        | 2,700                                   | 12,500 |
| Q1 | 2000 | 3,900  | 1,200                                    | 4,700                        | 2,700                                   | 12,500 |
| Q2 | 2000 | 4,000  | 1,200                                    | 4,600                        | 2,600                                   | 12,400 |
| Q3 | 2000 | 4,000  | 1,200                                    | 4,600                        | 2,600                                   | 12,400 |
| Q4 | 2000 | 4,100  | 1,200                                    | 4,500                        | 2,600                                   | 12,400 |
| Q1 | 2001 | 4,100  | 1,200                                    | 4,500                        | 2,600                                   | 12,500 |
| Q2 | 2001 | 4,200  | 1,200                                    | 4,500                        | 2,700                                   | 12,600 |
| Q3 | 2001 | 4,200  | 1,300                                    | 4,500                        | 2,800                                   | 12,800 |
| Q4 | 2001 | 4,300  | 1,300                                    | 4,500                        | 2,900                                   | 13,000 |
| Q1 | 2002 | 4,300  | 1,300                                    | 4,600                        | 3,000                                   | 13,100 |
| Q2 | 2002 | 4,400  | 1,300                                    | 4,600                        | 3,000                                   | 13,300 |
| Q3 | 2002 | 4,400  | 1,400                                    | 4,600                        | 3,100                                   | 13,400 |
| Q4 | 2002 | 4,400  | 1,400                                    | 4,600                        | 3,100                                   | 13,500 |
| Q1 | 2003 | 4,500  | 1,500                                    | 4,500                        | 3,200                                   | 13,600 |
| Q2 | 2003 | 4,500  | 1,500                                    | 4,500                        | 3,300                                   | 13,700 |
| Q3 | 2003 | 4,500  | 1,500                                    | 4,400                        | 3,400                                   | 13,800 |
| Q4 | 2003 | 4,500  | 1,500                                    | 4,300                        | 3,600                                   | 13,900 |
| Q1 | 2004 | 4,500  | 1,500                                    | 4,300                        | 3,700                                   | 14,000 |
| Q2 | 2004 | 4,600  | 1,400                                    | 4,200                        | 3,900                                   | 14,100 |
| Q3 | 2004 | 4,500  | 1,400                                    | 4,300                        | 3,900                                   | 14,100 |
| Q4 | 2004 | 4,500  | 1,400                                    | 4,200                        | 4,000                                   | 14,100 |
| Q1 | 2005 | 4,600  | 1,400                                    | 4,200                        | 4,000                                   | 14,200 |
| Q2 | 2005 | 4,600  | 1,400                                    | 4,200                        | 4,200                                   | 14,300 |
| Q3 | 2005 | 4,600  | 1,500                                    | 4,200                        | 4,200                                   | 14,500 |
| Q4 | 2005 | 4,600  | 1,500                                    | 4,000                        | 4,200                                   | 14,400 |
| Q1 | 2006 | 4,400  | 1,500                                    | 4,000                        | 4,500                                   | 14,400 |
| Q2 | 2006 | 4,500  | 1,500                                    | 4,000                        | 4,500                                   | 14,500 |
| Q3 | 2006 | 4,400  | 1,500                                    | 4,000                        | 4,500                                   | 14,500 |
| Q4 | 2006 | 4,400  | 1,500                                    | 4,100                        | 4,500                                   | 14,500 |
| Q1 | 2007 | 4,300  | 1,500                                    | 4,000                        | 4,600                                   | 14,500 |
| Q2 | 2007 | 4,300  | 1,500                                    | 4,000                        | 4,700                                   | 14,600 |
| Q3 | 2007 | 4,400  | 1,600                                    | 4,000                        | 4,700                                   | 14,600 |
| Q4 | 2007 | 4,400  | 1,500                                    | 4,000                        | 4,600                                   | 14,500 |
| Q1 | 2008 | 4,500  | 1,600                                    | 4,000                        | 4,700                                   | 14,700 |
| Q2 | 2008 | 4,900  | 1,600                                    | 4,000                        | 4,300                                   | 14,800 |
| Q3 | 2008 | 4,900  | 1,700                                    | 4,000                        | 4,300                                   | 14,900 |
| Q4 | 2008 | 5,000  | 1,700                                    | 4,000                        | 4,300                                   | 14,900 |
| Q1 | 2009 | 5,000  | 1,700                                    | 4,000                        | 4,500                                   | 15,200 |
| Q2 | 2009 | 5,500  | 1,700                                    | 4,000                        | 4,000                                   | 15,300 |

Sources: Quarterly Public Employees Survey  
Civil Service Statistics

Notes:

1. All Figures are rounded to the nearest hundred.
2. Totals may not add to the sum of the parts due to rounding.
3. Where quarterly data are not available the data are estimated from available data. More information can be found in background note 4.
4. 1999 figures are for the Scottish Office.
5. Details of the agencies included in this category can be found in background note 14.
- r. Figures have been revised since previous publication. For more information see background note 22.

Table 4 (b). Employment (Permanent Staff Only): Other Civil Service in Scotland; Headcount<sup>1,2,3</sup>

|    | Devolved Non-Ministerial Departments |                       |  |                                    | UK Government Departments |                                     |   |  |                 |                                  | Total UK wide Civil Service (with presence in Scotland) | Total  |        |
|----|--------------------------------------|-----------------------|--|------------------------------------|---------------------------|-------------------------------------|---|--|-----------------|----------------------------------|---|--------|--------|
|    | General Register Office              | Registers of Scotland | Office of the Scottish Charity Regulator | Total Devolved Other Civil Service | Ministry of Defence       | HM Revenue and Customs <sup>4</sup> | Department for Work and Pensions <sup>4</sup> | Department for International Development | Scotland Office | Other Civil Service <sup>5</sup> |   |        |        |
| 01 | 1999                                 | 220                   | 1,200                                    | 1,400                              | 9,300                     | 7,800                               | 12,800  | 400                                      |                 |                                  | 1,900   | 32,200 | 33,600 |
| 02 | 1999                                 | 230                   | 1,300                                    | 1,500                              | 9,300                     | 7,800                               | 13,100  | 400                                      |                 |                                  | 1,900   | 32,400 | 33,900 |
| 03 | 1999                                 | 240                   | 1,300                                    | 1,500                              | 9,300                     | 7,700                               | 13,200  | 400                                      |                 |                                  | 1,900   | 32,600 | 34,100 |
| 04 | 1999                                 | 240                   | 1,300                                    | 1,600                              | 9,200                     | 7,700                               | 13,300  | 500                                      |                 |                                  | 1,900   | 32,600 | 34,200 |
| 01 | 2000                                 | 240                   | 1,400                                    | 1,600                              | 9,200                     | 7,600                               | 13,400  | 500                                      | 20              |                                  | 1,900   | 32,600 | 34,200 |
| 02 | 2000                                 | 240                   | 1,300                                    | 1,600                              | 9,300                     | 7,700                               | 13,400  | 500                                      | 30              |                                  | 1,900   | 32,700 | 34,300 |
| 03 | 2000                                 | 240                   | 1,300                                    | 1,600                              | 9,400                     | 7,700                               | 13,500  | 500                                      | 50              |                                  | 1,900   | 33,000 | 34,600 |
| 04 | 2000                                 | 240                   | 1,300                                    | 1,600                              | 9,400                     | 7,800                               | 13,500  | 500                                      | 60              |                                  | 1,900   | 33,100 | 34,600 |
| 01 | 2001                                 | 240                   | 1,300                                    | 1,600                              | 9,000                     | 7,800                               | 13,700  | 500                                      | 70              |                                  | 1,800   | 32,800 | 34,400 |
| 02 | 2001                                 | 240                   | 1,300                                    | 1,600                              | 9,000                     | 7,900                               | 13,900  | 500                                      | 80              |                                  | 1,800   | 33,000 | 34,600 |
| 03 | 2001                                 | 240                   | 1,300                                    | 1,600                              | 8,900                     | 7,900                               | 13,600  | 500                                      | 80              |                                  | 1,800   | 32,800 | 34,400 |
| 04 | 2001                                 | 240                   | 1,400                                    | 1,600                              | 8,900                     | 8,000                               | 14,300  | 500                                      | 80              |                                  | 1,800   | 33,500 | 35,100 |
| 01 | 2002                                 | 240                   | 1,400                                    | 1,600                              | 8,900                     | 8,000                               | 14,300  | 500                                      | 80              |                                  | 1,800   | 33,700 | 35,300 |
| 02 | 2002                                 | 240                   | 1,400                                    | 1,600                              | 8,800                     | 8,400                               | 14,900  | 500                                      | 80              |                                  | 1,900   | 34,700 | 36,300 |
| 03 | 2002                                 | 230                   | 1,400                                    | 1,600                              | 8,700                     | 8,800                               | 14,100  | 500                                      | 80              |                                  | 2,000   | 34,100 | 35,700 |
| 04 | 2002                                 | 230                   | 1,400                                    | 1,600                              | 7,300                     | 9,200                               | 13,900  | 500                                      | 80              |                                  | 2,100   | 33,100 | 34,700 |
| 01 | 2003                                 | 220                   | 1,400                                    | 1,600                              | 7,300                     | 9,500                               | 13,900  | 500                                      | 80              |                                  | 2,300   | 33,500 | 35,100 |
| 02 | 2003                                 | 220                   | 1,400                                    | 1,600                              | 7,200                     | 9,700                               | 14,900  | 500                                      | 80              |                                  | 2,300   | 34,800 | 36,400 |
| 03 | 2003                                 | 210                   | 1,400                                    | 1,600                              | 7,200                     | 10,000                              | 14,200  | 500                                      | 70              |                                  | 2,400   | 34,300 | 36,000 |
| 04 | 2003                                 | 210                   | 1,500                                    | 1,700                              | 7,200                     | 10,200                              | 14,500  | 500                                      | 70              |                                  | 2,400   | 34,800 | 36,500 |
| 01 | 2004                                 | 210                   | 1,500                                    | 1,700                              | 7,300                     | 10,400                              | 14,800  | 500                                      | 60              |                                  | 2,400   | 35,400 | 37,100 |
| 02 | 2004                                 | 210                   | 1,500                                    | 1,700                              | 7,100                     | 10,500                              | 14,600  | 500                                      | 60              |                                  | 2,300   | 35,100 | 36,900 |
| 03 | 2004                                 | 210                   | 1,500                                    | 1,700                              | 7,000                     | 10,500                              | 14,800  | 500                                      | 80              |                                  | 2,300   | 35,300 | 37,000 |
| 04 | 2004                                 | 220                   | 1,500                                    | 1,700                              | 6,900                     | 10,600                              | 14,500  | 500                                      | 80              |                                  | 2,300   | 35,000 | 36,700 |
| 01 | 2005                                 | 220                   | 1,500                                    | 1,700                              | 6,900                     | 10,700                              | 13,800  | 500                                      | 70              |                                  | 2,500   | 34,500 | 36,200 |
| 02 | 2005                                 | 250                   | 1,500                                    | 1,700                              | 6,900                     | 10,800                              | 13,500  | 500                                      | 60              |                                  | 2,500   | 34,300 | 36,000 |
| 03 | 2005                                 | 240                   | 1,500                                    | 1,700                              | 7,000                     | 10,900                              | 13,400  | 500                                      | 60              |                                  | 2,500   | 34,400 | 36,100 |
| 04 | 2005                                 | 260                   | 1,500                                    | 1,700                              | 7,000                     | 11,100                              | 13,300  | 600                                      | 60              |                                  | 2,500   | 34,500 | 36,300 |
| 01 | 2006                                 | 250                   | 1,500                                    | 1,800                              | 7,000                     | 11,300                              | 13,300  | 600                                      | 60              |                                  | 2,500   | 34,700 | 36,400 |
| 02 | 2006                                 | 250                   | 1,500                                    | 1,700                              | 6,900                     | 11,600                              | 13,100  | 600                                      | 50              |                                  | 2,500   | 34,800 | 36,500 |
| 03 | 2006                                 | 250                   | 1,400                                    | 1,700                              | 6,800                     | 11,600                              | 13,100  | 600                                      | 50              |                                  | 2,400   | 34,500 | 36,200 |
| 04 | 2006                                 | 250                   | 1,400                                    | 1,700                              | 6,700                     | 11,500                              | 13,000  | 600                                      | 50              |                                  | 2,400   | 34,200 | 35,900 |
| 01 | 2007                                 | 260                   | 1,400                                    | 1,700                              | 6,600                     | 11,300                              | 12,600  | 500                                      | 50              |                                  | 2,400   | 33,500 | 35,200 |
| 02 | 2007                                 | 260                   | 1,400                                    | 1,700                              | 6,600                     | 11,200                              | 12,500  | 500                                      | 60              |                                  | 2,400   | 33,200 | 34,900 |
| 03 | 2007                                 | 270                   | 1,400                                    | 1,700                              | 6,500                     | 10,800                              | 12,300  | 500                                      | 60              |                                  | 2,400   | 32,600 | 34,300 |
| 04 | 2007                                 | 270                   | 1,400                                    | 1,700                              | 6,500                     | 10,700                              | 12,100  | 500                                      | 60              |                                  | 2,400   | 32,300 | 34,000 |
| 01 | 2008                                 | 280                   | 1,400                                    | 1,700                              | 6,100                     | 10,800                              | 12,000  | 500                                      | 60              |                                  | 2,300   | 31,700 | 33,400 |
| 02 | 2008                                 | 290                   | 1,400                                    | 1,700                              | 6,000                     | 10,700                              | 12,000  | 500                                      | 60              |                                  | 2,300   | 31,600 | 33,300 |
| 03 | 2008                                 | 300                   | 1,400                                    | 1,700                              | 6,000                     | 10,600                              | 11,900  | 500                                      | 60              |                                  | 2,400   | 31,400 | 33,100 |
| 04 | 2008                                 | 310                   | 1,400                                    | 1,700                              | 6,000                     | 11,100                              | 10,400  | 500                                      | 70              |                                  | 4,000   | 32,000 | 33,700 |
| 01 | 2009                                 | 310                   | 1,400                                    | 1,700                              | 5,900                     | 10,900                              | 10,600  | 500                                      | 70              |                                  | 4,000   | 32,000 | 33,700 |
| 02 | 2009                                 | 310                   | 1,400                                    | 1,800                              | 5,900                     | 10,700                              | 11,200  | 500                                      | 70              |                                  | 3,900   | 32,300 | 34,100 |

Sources: HM Revenues and Customs  
 Department for Work and Pensions  
 Department for International Development  
 Civil Service Statistics  
 Ministry of Defence

Notes:

- All figures are rounded to the nearest hundred except for the General Register Office, Office of the Scottish Charity Regulator and Scotland Office figures which are rounded to the nearest ten.
- Totals may not add to the sum of the parts due to rounding.
- Where quarterly data are not available the data are estimated from available data. More information can be found in background note 4.
- Data prior to 2005 for HM Revenue and Customs are calculated from the Inland Revenue and HM Customs and Excise.
- Data prior to 2001 for the Department for Work and Pensions are calculated from the employment service and the Department for Social Security. Staff previously working in the Child Support Agency (part of DWP) have transferred to the new Child Maintenance Enforcement Commission (CMEC) from Q4 2008. Although CMEC is an NDPB, staff are included in the Other Civil Service category as staff have retained their civil service contracts.
- Figures have been revised since previous publication. For more information see background note 22.

5 (a). Employment (Permanent Staff Only): Core Scottish Government and Government Agencies; Full-time equivalent<sup>1,2,3,4</sup>

|    |      | Scottish Government Core Departments (excl Agencies) <sup>4</sup> |                         | Scottish Government Agencies         |       | Total  |
|----|------|---|-------------------------|--------------------------------------|-------|--------|
|    |      | Crown Office and Procurator Fiscal                                | Scottish Prison Service | Other Scottish Agencies <sup>5</sup> |       |        |
| Q1 | 1999 | 3,700   | 1,100                   | 4,800                                | 2,600 | 12,200 |
| Q2 | 1999 | 3,700   | 1,100                   | 4,800                                | 2,600 | 12,200 |
| Q3 | 1999 | 3,700   | 1,100                   | 4,700                                | 2,600 | 12,200 |
| Q4 | 1999 | 3,800   | 1,100                   | 4,700                                | 2,500 | 12,100 |
| Q1 | 2000 | 3,800   | 1,100                   | 4,600                                | 2,500 | 12,100 |
| Q2 | 2000 | 3,800   | 1,100                   | 4,600                                | 2,500 | 12,000 |
| Q3 | 2000 | 3,900   | 1,100                   | 4,500                                | 2,500 | 12,000 |
| Q4 | 2000 | 3,900   | 1,100                   | 4,500                                | 2,500 | 12,000 |
| Q1 | 2001 | 4,000   | 1,200                   | 4,400                                | 2,500 | 12,100 |
| Q2 | 2001 | 4,000   | 1,200                   | 4,400                                | 2,600 | 12,200 |
| Q3 | 2001 | 4,100   | 1,200                   | 4,500                                | 2,700 | 12,400 |
| Q4 | 2001 | 4,100   | 1,200                   | 4,500                                | 2,800 | 12,600 |
| Q1 | 2002 | 4,200   | 1,200                   | 4,500                                | 2,800 | 12,800 |
| Q2 | 2002 | 4,200   | 1,300                   | 4,500                                | 2,900 | 12,900 |
| Q3 | 2002 | 4,300   | 1,300                   | 4,500                                | 2,900 | 13,000 |
| Q4 | 2002 | 4,300   | 1,400                   | 4,500                                | 2,900 | 13,100 |
| Q1 | 2003 | 4,300   | 1,400                   | 4,500                                | 3,000 | 13,200 |
| Q2 | 2003 | 4,300   | 1,400                   | 4,400                                | 3,100 | 13,200 |
| Q3 | 2003 | 4,400   | 1,400                   | 4,300                                | 3,200 | 13,300 |
| Q4 | 2003 | 4,400   | 1,400                   | 4,300                                | 3,400 | 13,400 |
| Q1 | 2004 | 4,400   | 1,400                   | 4,200                                | 3,500 | 13,500 |
| Q2 | 2004 | 4,400   | 1,400                   | 4,100                                | 3,700 | 13,600 |
| Q3 | 2004 | 4,400   | 1,300                   | 4,200                                | 3,700 | 13,700 |
| Q4 | 2004 | 4,300   | 1,300                   | 4,200                                | 3,700 | 13,600 |
| Q1 | 2005 | 4,500   | 1,300                   | 4,100                                | 3,800 | 13,700 |
| Q2 | 2005 | 4,400   | 1,300                   | 4,100                                | 4,000 | 13,800 |
| Q3 | 2005 | 4,500   | 1,400                   | 4,100                                | 4,000 | 14,000 |
| Q4 | 2005 | 4,400   | 1,400                   | 4,000                                | 4,000 | 13,800 |
| Q1 | 2006 | 4,300   | 1,400                   | 3,900                                | 4,200 | 13,900 |
| Q2 | 2006 | 4,300   | 1,400                   | 4,000                                | 4,300 | 14,000 |
| Q3 | 2006 | 4,200   | 1,400                   | 4,000                                | 4,300 | 13,900 |
| Q4 | 2006 | 4,200   | 1,500                   | 4,000                                | 4,200 | 13,900 |
| Q1 | 2007 | 4,200   | 1,500                   | 4,000                                | 4,300 | 13,900 |
| Q2 | 2007 | 4,100   | 1,500                   | 3,900                                | 4,500 | 14,000 |
| Q3 | 2007 | 4,200   | 1,500                   | 3,900                                | 4,400 | 14,000 |
| Q4 | 2007 | 4,200   | 1,500                   | 3,900                                | 4,300 | 13,900 |
| Q1 | 2008 | 4,300   | 1,500                   | 3,900                                | 4,400 | 14,100 |
| Q2 | 2008 | 4,700   | 1,500                   | 3,900                                | 4,100 | 14,200 |
| Q3 | 2008 | 4,700   | 1,600                   | 3,900                                | 4,100 | 14,200 |
| Q4 | 2008 | 4,800   | 1,600                   | 3,900                                | 4,100 | 14,300 |
| Q1 | 2009 | 4,800   | 1,600                   | 3,900                                | 4,200 | 14,500 |
| Q2 | 2009 | 5,300   | 1,600                   | 3,900                                | 3,800 | 14,600 |

Notes:

1. All Figures are rounded to the nearest hundred.

2. Totals may not add to the sum of the parts due to rounding.

3. Where quarterly data are not available the data are estimated from available data. More information can be found in background note 4.

4. 1999 figures are for the Scottish Office.

5. Details of the agencies included in this category can be found in background note 14.

r. Figures have been revised since previous publication. For more information see background note 22.

5 (b). Employment (Permanent Staff Only): Other Civil Service in Scotland: Full-time equivalent<sup>1,2,3</sup>

|    |      | Devolved Non-Ministerial Departments |                       |  | UK Government Departments          |                     |                                     |   |  |                 | Total UK wide                    |   |        |
|----|------|--------------------------------------|-----------------------|--|------------------------------------|---------------------|-------------------------------------|---|--|-----------------|----------------------------------|---|--------|
|    |      | General Register Office              | Registers of Scotland | Office of the Scottish Charity Regulator | Total Devolved Other Civil Service | Ministry of Defence | HM Revenue and Customs <sup>4</sup> | Department for Work and Pensions <sup>5</sup> | Department for International Development | Scotland Office | Other Civil Service <sup>5</sup> | Civil Service (with presence in Scotland) | Total  |
| 01 | 1999 | 210                                  | 1,100                 |  | 1,300                              | 9,100               | 7,400                               | 12,000  | 400                                      |                 | 1,800                            | 30,600                                    | 32,000 |
| 02 | 1999 | 220                                  | 1,200                 |  | 1,400                              | 9,100               | 7,300                               | 12,200  | 400                                      |                 | 1,600                            | 30,700                                    | 32,100 |
| 03 | 1999 | 230                                  | 1,200                 |  | 1,500                              | 9,100               | 7,300                               | 12,400  | 400                                      |                 | 1,600                            | 30,700                                    | 32,200 |
| 04 | 1999 | 230                                  | 1,300                 |  | 1,500                              | 9,000               | 7,300                               | 12,500  | 400                                      |                 | 1,600                            | 30,700                                    | 32,200 |
| 01 | 2000 | 230                                  | 1,300                 |  | 1,500                              | 9,000               | 7,200                               | 12,500  | 400                                      | 20              | 1,600                            | 30,800                                    | 32,300 |
| 02 | 2000 | 230                                  | 1,300                 |  | 1,500                              | 9,100               | 7,300                               | 12,600  | 400                                      | 30              | 1,600                            | 31,000                                    | 32,500 |
| 03 | 2000 | 230                                  | 1,300                 |  | 1,500                              | 9,200               | 7,300                               | 12,600  | 500                                      | 40              | 1,700                            | 31,300                                    | 32,800 |
| 04 | 2000 | 230                                  | 1,300                 |  | 1,500                              | 9,200               | 7,300                               | 12,700  | 500                                      | 50              | 1,700                            | 31,400                                    | 32,900 |
| 01 | 2001 | 230                                  | 1,300                 |  | 1,500                              | 8,900               | 7,400                               | 12,800  | 500                                      | 60              | 1,700                            | 31,200                                    | 32,700 |
| 02 | 2001 | 230                                  | 1,300                 |  | 1,500                              | 8,700               | 7,400                               | 13,000  | 500                                      | 70              | 1,700                            | 31,400                                    | 32,900 |
| 03 | 2001 | 230                                  | 1,300                 |  | 1,500                              | 8,700               | 7,500                               | 12,700  | 500                                      | 70              | 1,700                            | 31,100                                    | 32,600 |
| 04 | 2001 | 230                                  | 1,300                 |  | 1,500                              | 8,700               | 7,500                               | 13,400  | 500                                      | 70              | 1,700                            | 31,800                                    | 33,300 |
| 01 | 2002 | 230                                  | 1,300                 |  | 1,500                              | 8,600               | 7,600                               | 13,400  | 500                                      | 70              | 1,700                            | 31,800                                    | 33,300 |
| 02 | 2002 | 230                                  | 1,300                 |  | 1,500                              | 8,700               | 7,900                               | 14,000  | 500                                      | 70              | 1,800                            | 32,900                                    | 34,400 |
| 03 | 2002 | 220                                  | 1,300                 |  | 1,500                              | 8,600               | 8,200                               | 13,100  | 500                                      | 70              | 1,900                            | 32,300                                    | 33,800 |
| 04 | 2002 | 220                                  | 1,300                 |  | 1,500                              | 7,200               | 8,500                               | 13,000  | 500                                      | 70              | 2,000                            | 31,200                                    | 32,800 |
| 01 | 2003 | 210                                  | 1,300                 |  | 1,500                              | 7,200               | 8,800                               | 12,900  | 500                                      | 70              | 2,100                            | 31,600                                    | 33,100 |
| 02 | 2003 | 210                                  | 1,300                 |  | 1,500                              | 7,100               | 9,000                               | 13,900  | 500                                      | 70              | 2,200                            | 32,800                                    | 34,400 |
| 03 | 2003 | 200                                  | 1,300                 |  | 1,500                              | 7,100               | 9,300                               | 13,200  | 500                                      | 70              | 2,200                            | 32,400                                    | 34,000 |
| 04 | 2003 | 200                                  | 1,400                 |  | 1,600                              | 7,100               | 9,500                               | 13,500  | 500                                      | 60              | 2,200                            | 32,900                                    | 34,500 |
| 01 | 2004 | 200                                  | 1,400                 |  | 1,600                              | 7,200               | 9,700                               | 13,700  | 500                                      | 60              | 2,200                            | 33,400                                    | 35,000 |
| 02 | 2004 | 200                                  | 1,400                 |  | 1,600                              | 7,100               | 9,800                               | 13,600  | 500                                      | 60              | 2,200                            | 33,200                                    | 34,800 |
| 03 | 2004 | 200                                  | 1,400                 |  | 1,600                              | 6,900               | 9,800                               | 13,700  | 500                                      | 80              | 2,200                            | 33,300                                    | 34,900 |
| 04 | 2004 | 210                                  | 1,400                 |  | 1,600                              | 6,900               | 9,900                               | 13,400  | 500                                      | 70              | 2,200                            | 33,000                                    | 34,600 |
| 01 | 2005 | 210                                  | 1,400                 |  | 1,600                              | 6,900               | 10,000                              | 12,700  | 500                                      | 60              | 2,400                            | 32,500                                    | 34,100 |
| 02 | 2005 | 230                                  | 1,400                 |  | 1,600                              | 6,900               | 10,000                              | 12,400  | 500                                      | 60              | 2,400                            | 32,300                                    | 33,900 |
| 03 | 2005 | 230                                  | 1,400                 |  | 1,600                              | 6,900               | 10,100                              | 12,300  | 500                                      | 60              | 2,400                            | 32,200                                    | 33,800 |
| 04 | 2005 | 240                                  | 1,400                 |  | 1,600                              | 6,800               | 10,300                              | 12,200  | 500                                      | 60              | 2,400                            | 32,200                                    | 33,900 |
| 01 | 2006 | 240                                  | 1,400                 | 30                                       | 1,600                              | 6,800               | 10,400                              | 12,200  | 500                                      | 60              | 2,400                            | 32,300                                    | 34,000 |
| 02 | 2006 | 240                                  | 1,400                 | 30                                       | 1,600                              | 6,700               | 10,700                              | 12,000  | 500                                      | 50              | 2,400                            | 32,400                                    | 34,000 |
| 03 | 2006 | 230                                  | 1,300                 | 30                                       | 1,600                              | 6,600               | 10,700                              | 12,000  | 500                                      | 50              | 2,300                            | 32,100                                    | 33,700 |
| 04 | 2006 | 230                                  | 1,300                 | 30                                       | 1,600                              | 6,500               | 10,500                              | 11,900  | 500                                      | 50              | 2,300                            | 31,800                                    | 33,400 |
| 01 | 2007 | 250                                  | 1,300                 | 30                                       | 1,600                              | 6,500               | 10,400                              | 11,500  | 500                                      | 50              | 2,300                            | 31,200                                    | 32,800 |
| 02 | 2007 | 250                                  | 1,300                 | 30                                       | 1,600                              | 6,400               | 10,300                              | 11,400  | 500                                      | 50              | 2,300                            | 30,900                                    | 32,500 |
| 03 | 2007 | 260                                  | 1,300                 | 40                                       | 1,600                              | 6,300               | 10,000                              | 11,200  | 500                                      | 60              | 2,300                            | 30,300                                    | 31,900 |
| 04 | 2007 | 260                                  | 1,300                 | 50                                       | 1,600                              | 6,300               | 9,900                               | 11,100  | 500                                      | 60              | 2,300                            | 30,100                                    | 31,700 |
| 01 | 2008 | 270                                  | 1,300                 | 50                                       | 1,600                              | 5,900               | 10,000                              | 10,900  | 500                                      | 60              | 2,200                            | 29,500                                    | 31,100 |
| 02 | 2008 | 260                                  | 1,300                 | 50                                       | 1,600                              | 5,900               | 9,900                               | 10,900  | 500                                      | 60              | 2,200                            | 29,400                                    | 31,000 |
| 03 | 2008 | 290                                  | 1,300                 | 50                                       | 1,600                              | 5,900               | 9,800                               | 10,800  | 500                                      | 60              | 2,300                            | 29,200                                    | 30,800 |
| 04 | 2008 | 300                                  | 1,300                 | 50                                       | 1,700                              | 5,800               | 10,100                              | 9,500   | 500                                      | 60              | 3,700                            | 29,600                                    | 31,200 |
| 01 | 2009 | 300                                  | 1,300                 | 50                                       | 1,600                              | 5,800               | 9,900                               | 9,700   | 500                                      | 60              | 3,700                            | 29,600                                    | 31,300 |
| 02 | 2009 | 300                                  | 1,300                 | 50                                       | 1,700                              | 5,800               | 9,700                               | 10,200  | 500                                      | 70              | 3,700                            | 29,900                                    | 31,600 |

Sources: HM Revenues and Customs  
 Department for Work and Pensions  
 Department for International Development  
 Civil Service Statistics  
 Ministry of Defence

Notes:

- All Figures are rounded to the nearest hundred except for the General Register Office, Office of the Scottish Charity Regulator and Scotland Office figures which are rounded to the nearest ten.
- Totals may not add to the sum of the parts due to rounding.
- Where quarterly data are not available the data are estimated from available data. More information can be found in background note 4.
- Data prior to 2005 for HM Revenue and Customs are calculated from the Inland Revenue and HM Customs and Excise.
- Data prior to 2001 for the Department for Work and Pensions are calculated from the employment service and the Department for Social Security. Staff previously working in the Child Support Agency (part of DWP) have transferred to the new Child Maintenance Enforcement Commission (CMEC) from Q4 2008. Although CMEC is an NDPB, staff are included in the Other Civil Service category as staff have retained their civil service contracts.
- Figures have been revised since previous publication. For more information see background note 22.

Table 6. Public Sector Employment by Local Government: Headcount<sup>1,2,5,6</sup>

|    |      | Education |                    | Social Work | Police and Related Services <sup>7</sup> | Fire and Related Services | Other <sup>4</sup> | Total Local Government excluding Police & Fire | Total Local Government |
|----|------|-----------|--------------------|-------------|--|---------------------------|--------------------|--|------------------------|
|    |      | Teachers  | Other <sup>3</sup> |             |  |                           |                    |  |                        |
| Q1 | 1999 | 60,500    | 35,400             | 47,700      | 20,400                                   | 5,600                     | 123,800            | 267,400  | 293,400                |
| Q2 | 1999 | 60,000    | 34,400             | 47,400      | 20,500                                   | 5,600                     | 125,200            | 267,000  | 293,000                |
| Q3 | 1999 | 59,500    | 34,900             | 50,100      | 20,100                                   | 5,600                     | 123,000            | 267,400  | 293,100                |
| Q4 | 1999 | 60,500    | 36,600             | 50,300      | 20,100                                   | 5,600                     | 122,700            | 270,100  | 295,800                |
| Q1 | 2000 | 61,000    | 37,600             | 50,100      | 20,000                                   | 5,700                     | 122,100            | 270,800  | 296,500                |
| Q2 | 2000 | 60,400    | 36,600             | 49,900      | 20,100                                   | 5,600                     | 123,300            | 270,200  | 295,900                |
| Q3 | 2000 | 59,900    | 36,500             | 49,600      | 20,200                                   | 5,600                     | 122,300            | 268,300  | 294,200                |
| Q4 | 2000 | 60,900    | 38,100             | 49,300      | 20,200                                   | 5,600                     | 120,500            | 268,800  | 294,700                |
| Q1 | 2001 | 61,000    | 39,400             | 49,500      | 20,500                                   | 5,600                     | 119,900            | 269,900  | 296,000                |
| Q2 | 2001 | 60,400    | 38,800             | 50,100      | 20,600                                   | 5,600                     | 120,400            | 269,700  | 295,900                |
| Q3 | 2001 | 60,000    | 39,600             | 50,100      | 20,600                                   | 5,700                     | 120,300            | 270,000  | 296,400                |
| Q4 | 2001 | 61,200    | 42,200             | 50,200      | 20,700                                   | 5,600                     | 119,700            | 273,300  | 299,700                |
| Q1 | 2002 | 61,600    | 43,600             | 50,200      | 20,900                                   | 5,500                     | 119,100            | 274,500  | 301,000                |
| Q2 | 2002 | 61,000    | 43,500             | 50,500      | 21,000                                   | 5,500                     | 119,700            | 274,700  | 301,300                |
| Q3 | 2002 | 60,400    | 42,600             | 51,700      | 21,100                                   | 5,500                     | 120,200            | 274,900  | 301,600                |
| Q4 | 2002 | 61,500    | 44,500             | 52,000      | 21,200                                   | 5,600                     | 119,500            | 277,500  | 304,300                |
| Q1 | 2003 | 61,900    | 45,700             | 53,100      | 22,100                                   | 5,500                     | 117,500            | 278,200  | 305,800                |
| Q2 | 2003 | 61,400    | 45,800             | 53,900      | 21,700                                   | 5,600                     | 119,200            | 280,300  | 307,500                |
| Q3 | 2003 | 59,900    | 45,200             | 54,400      | 21,700                                   | 5,600                     | 119,800            | 279,400  | 306,700                |
| Q4 | 2003 | 62,200    | 46,900             | 55,300      | 21,900                                   | 5,700                     | 118,600            | 283,000  | 310,600                |
| Q1 | 2004 | 62,700    | 48,400             | 56,000      | 22,400                                   | 5,700                     | 118,600            | 285,600  | 313,700                |
| Q2 | 2004 | 62,200    | 48,600             | 56,100      | 22,700                                   | 5,600                     | 120,100            | 287,000  | 315,300                |
| Q3 | 2004 | 61,900    | 47,800             | 56,500      | 22,700                                   | 5,700                     | 120,600            | 286,800  | 315,100                |
| Q4 | 2004 | 63,200    | 49,600             | 56,500      | 23,000                                   | 5,600                     | 119,700            | 289,000  | 317,600                |
| Q1 | 2005 | 63,800    | 49,900             | 57,000      | 23,300                                   | 5,700                     | 118,300            | 289,000  | 318,000                |
| Q2 | 2005 | 62,900    | 52,000             | 56,200      | 23,400                                   | 5,700                     | 120,900            | 291,900  | 321,100                |
| Q3 | 2005 | 63,200    | 50,700             | 56,600      | 23,700                                   | 5,700                     | 121,100            | 291,600  | 321,000                |
| Q4 | 2005 | 64,000    | 52,000             | 56,500      | 24,100                                   | 5,700                     | 120,300            | 292,800  | 322,700                |
| Q1 | 2006 | 64,600    | 53,100             | 56,500      | 24,200                                   | 5,800                     | 120,400            | 294,600  | 324,600                |
| Q2 | 2006 | 63,900    | 52,400             | 56,300      | 24,400                                   | 5,800                     | 120,400            | 292,900  | 323,100                |
| Q3 | 2006 | 64,000    | 50,700             | 57,000      | 24,200                                   | 5,800                     | 118,800            | 290,400  | 320,300                |
| Q4 | 2006 | 65,200    | 51,700             | 57,200      | 24,600                                   | 5,800                     | 115,700            | 289,800  | 320,200                |
| Q1 | 2007 | 65,000    | 51,600             | 58,400      | 24,600                                   | 5,800                     | 114,900            | 289,800  | 320,200                |
| Q2 | 2007 | 64,600    | 51,700             | 58,600      | 24,100                                   | 5,800                     | 112,900            | 287,700  | 317,600                |
| Q3 | 2007 | 63,800    | 50,900             | 58,400      | 23,600                                   | 5,700                     | 112,200            | 285,300  | 314,700                |
| Q4 | 2007 | 65,000    | 52,500             | 58,300      | 23,600                                   | 5,800                     | 110,200            | 286,000  | 315,500                |
| Q1 | 2008 | 65,200    | 53,200             | 57,800      | 23,600                                   | 5,800                     | 109,800            | 286,000  | 315,400                |
| Q2 | 2008 | 64,300    | 52,800             | 57,700      | 23,300                                   | 5,800                     | 109,200            | 284,000  | 313,100                |
| Q3 | 2008 | 63,500    | 52,000             | 58,000      | 23,800                                   | 5,800                     | 109,200            | 282,800  | 312,300                |
| Q4 | 2008 | 64,300    | 52,400             | 57,700      | 23,900                                   | 5,800                     | 108,600            | 283,000  | 312,700                |
| Q1 | 2009 | 64,400    | 52,400             | 57,700      | 24,400                                   | 5,800                     | 108,600            | 283,100  | 313,200                |
| Q2 | 2009 | 63,600    | 51,800             | 54,200      | 24,700                                   | 5,800                     | 104,600            | 274,200  | 304,700                |

Source: Joint Staffing Watch Survey

Notes:

1. All figures have been rounded to the nearest hundred.
2. Totals may not add to the sum of the parts due to rounding.
3. Education 'Other' contains: Director of Education and support staff; other education department support staff; and staff providing educational support services; cultural and youth services staff; and school based administration and support staff.
4. Further breakdowns are available on request.
5. Other staff contains: corporate services; central support; planning and economic development; housing; roads and transport; arts, sports and leisure; libraries, museums and galleries; trading standards; staff of district court; environmental services; Direct Labour Organisation (DLO) staff and Direct Service Organisation (DSO) staff.
6. From Q1 2005, the Joint Staffing Watch Survey is collected by the Scottish Government. This data was previously collected by COSLA in conjunction with the Scottish Government.
7. Figures for Fire Service staff exclude volunteer and retained firefighters.
8. Figures have been revised since previous publication. For more information see background note 22.

Table 7. Public Sector Employment by Local Government; Full-time equivalent<sup>1,2,5,6</sup>

|    |      | Education |                    | Social Work | Police and Related Services <sup>7</sup> | Fire and Related Services | Other <sup>4</sup> | Total Local Government excluding Police & Fire | Total Local Government |
|----|------|-----------|--------------------|-------------|--|---------------------------|--------------------|--|------------------------|
|    |      | Teachers  | Other <sup>3</sup> |             |  |                           |                    |  |                        |
| 01 | 1999 | 54,300    | 23,400             | 35,000      | 19,800                                   | 5,500                     | 97,100             | 209,800  | 235,000                |
| 02 | 1999 | 53,800    | 23,200             | 34,800      | 19,800                                   | 5,500                     | 98,100             | 210,100  | 235,400                |
| 03 | 1999 | 53,600    | 24,100             | 36,700      | 19,600                                   | 5,500                     | 96,900             | 211,200  | 236,300                |
| 04 | 1999 | 54,300    | 25,000             | 36,700      | 19,600                                   | 5,500                     | 96,100             | 212,000  | 237,100                |
| 01 | 2000 | 54,900    | 25,400             | 36,500      | 19,500                                   | 5,500                     | 95,800             | 212,600  | 237,600                |
| 02 | 2000 | 54,300    | 25,300             | 36,600      | 19,500                                   | 5,500                     | 96,600             | 212,800  | 237,900                |
| 03 | 2000 | 53,900    | 25,700             | 36,700      | 19,600                                   | 5,500                     | 95,500             | 211,800  | 236,900                |
| 04 | 2000 | 54,500    | 26,300             | 36,600      | 19,700                                   | 5,500                     | 94,100             | 211,500  | 236,700                |
| 01 | 2001 | 54,500    | 26,800             | 36,600      | 20,000                                   | 5,500                     | 93,200             | 211,100  | 236,600                |
| 02 | 2001 | 54,200    | 27,000             | 37,000      | 20,000                                   | 5,500                     | 94,700             | 212,900  | 238,400                |
| 03 | 2001 | 53,600    | 27,600             | 37,500      | 20,000                                   | 5,500                     | 94,900             | 213,600  | 239,200                |
| 04 | 2001 | 54,300    | 28,800             | 37,800      | 20,100                                   | 5,500                     | 93,900             | 214,700  | 240,300                |
| 01 | 2002 | 54,600    | 29,400             | 38,000      | 20,300                                   | 5,400                     | 94,000             | 216,000  | 241,700                |
| 02 | 2002 | 54,300    | 29,200             | 38,400      | 20,400                                   | 5,400                     | 95,400             | 217,200  | 242,900                |
| 03 | 2002 | 54,400    | 29,000             | 39,200      | 20,500                                   | 5,400                     | 95,500             | 218,100  | 244,000                |
| 04 | 2002 | 54,900    | 29,800             | 39,900      | 20,600                                   | 5,400                     | 94,300             | 218,900  | 244,900                |
| 01 | 2003 | 55,300    | 30,500             | 40,900      | 20,800                                   | 5,400                     | 92,500             | 219,200  | 245,500                |
| 02 | 2003 | 54,800    | 30,900             | 41,600      | 21,000                                   | 5,500                     | 94,100             | 221,400  | 247,900                |
| 03 | 2003 | 54,700    | 31,000             | 42,000      | 21,000                                   | 5,500                     | 94,700             | 222,300  | 248,800                |
| 04 | 2003 | 55,600    | 31,900             | 42,800      | 21,100                                   | 5,500                     | 94,400             | 224,800  | 251,400                |
| 01 | 2004 | 55,800    | 32,600             | 43,200      | 21,500                                   | 5,500                     | 94,200             | 225,800  | 252,800                |
| 02 | 2004 | 55,600    | 32,900             | 43,300      | 21,800                                   | 5,500                     | 95,600             | 227,500  | 254,800                |
| 03 | 2004 | 55,500    | 32,900             | 44,000      | 21,900                                   | 5,500                     | 96,200             | 228,700  | 256,100                |
| 04 | 2004 | 56,100    | 33,900             | 44,200      | 22,300                                   | 5,500                     | 95,100             | 229,200  | 256,900                |
| 01 | 2005 | 57,100    | 34,000             | 44,700      | 22,600                                   | 5,600                     | 94,800             | 230,600  | 258,800                |
| 02 | 2005 | 56,200    | 35,700             | 44,100      | 22,700                                   | 5,500                     | 95,900             | 231,900  | 260,100                |
| 03 | 2005 | 56,500    | 35,200             | 44,400      | 22,900                                   | 5,500                     | 96,200             | 232,300  | 260,800                |
| 04 | 2005 | 57,000    | 35,700             | 44,500      | 23,400                                   | 5,600                     | 95,700             | 232,900  | 261,900                |
| 01 | 2006 | 57,200    | 36,000             | 44,600      | 23,400                                   | 5,700                     | 95,800             | 233,700  | 262,800                |
| 02 | 2006 | 56,800    | 35,900             | 44,100      | 23,500                                   | 5,600                     | 95,900             | 232,600  | 261,800                |
| 03 | 2006 | 57,100    | 35,600             | 44,600      | 23,300                                   | 5,700                     | 95,100             | 232,400  | 261,300                |
| 04 | 2006 | 57,700    | 35,900             | 44,900      | 23,700                                   | 5,700                     | 91,600             | 230,100  | 259,500                |
| 01 | 2007 | 57,500    | 35,100             | 45,900      | 23,600                                   | 5,700                     | 91,300             | 229,800  | 259,000                |
| 02 | 2007 | 57,500    | 35,000             | 46,500      | 23,200                                   | 5,600                     | 90,100             | 229,100  | 257,900                |
| 03 | 2007 | 57,700    | 35,800             | 46,100      | 22,700                                   | 5,600                     | 89,900             | 229,500  | 257,800                |
| 04 | 2007 | 58,000    | 36,400             | 46,100      | 22,800                                   | 5,700                     | 88,900             | 229,300  | 257,800                |
| 01 | 2008 | 58,100    | 36,900             | 46,000      | 22,700                                   | 5,700                     | 88,400             | 229,300  | 257,700                |
| 02 | 2008 | 57,500    | 36,700             | 45,800      | 22,500                                   | 5,600                     | 88,600             | 228,600  | 256,700                |
| 03 | 2008 | 56,800    | 36,500             | 46,100      | 22,900                                   | 5,600                     | 89,000             | 228,400  | 256,900                |
| 04 | 2008 | 57,100    | 36,700             | 46,100      | 23,100                                   | 5,600                     | 87,700             | 227,600  | 256,300                |
| 01 | 2009 | 57,200    | 36,900             | 46,000      | 23,500                                   | 5,600                     | 87,400             | 227,500  | 256,700                |
| 02 | 2009 | 56,800    | 37,000             | 43,600      | 23,900                                   | 5,700                     | 85,500             | 223,000  | 252,600                |

Source: Joint Staffing Watch Survey

Notes:

1. All figures have been rounded to the nearest hundred.
2. Totals may not add to the sum of the parts due to rounding.
3. Education 'Other' contains: Director of Education and support staff; other education department support staff; and staff providing educational support services; cultural and youth services staff; and school based administration and support staff.
4. Further breakdowns are available on request.
5. Other staff contains: corporate services; central support; planning and economic development; housing; roads and transport; arts, sports and leisure; libraries, museums and galleries; trading standards; staff of district court; environmental services; Direct Labour Organisation (DLO) staff and Direct Service Organisation (DSO) staff.
6. From Q1 2005, the Joint Staffing Watch Survey is collected by the Scottish Government. This data was previously collected by COSLA in conjunction with the Scottish Government.
7. Figures for Fire Service staff exclude volunteer and retained firefighters.
8. Figures have been revised since previous publication. For more information see background note 22.

## A NATIONAL STATISTICS PUBLICATION FOR SCOTLAND

Official and National Statistics are produced to high professional standards set out in the Code of Practice for Official Statistics at <http://www.statisticsauthority.gov.uk/assessment/code-of-practice/code-of-practice-for-official-statistics.pdf>. Both undergo regular quality assurance reviews to ensure that they meet customer needs and are produced free from any political interference.

Statistics assessed, or subject to assessment, by the UK Statistics Authority carry the National Statistics label, a stamp of assurance that the statistics have been produced and explained to high standards and that they serve the public good.

Further information about Official and National Statistics can be found on the UK Statistics Authority website at [www.statisticsauthority.gov.uk](http://www.statisticsauthority.gov.uk)

## SCOTTISH GOVERNMENT STATISTICIAN GROUP

### Our Aim

To provide relevant and reliable information, analysis and advice that meet the needs of government, business and the people of Scotland.

For more information on the Statistician Group, please see the Scottish Government website at [www.scotland.gov.uk/statistics](http://www.scotland.gov.uk/statistics)

### Correspondence and enquiries

Enquiries on this publication should be addressed to:

Denise Patrick  
Education Analytical Services  
Scottish Government  
5<sup>th</sup> Floor, 5 Atlantic Quay  
GLASGOW G2 8LU  
Telephone: (0300) 244 6783 or (0141) 278 8783;  
e-mail: [labour-market.statistics@scotland.gsi.gov.uk](mailto:labour-market.statistics@scotland.gsi.gov.uk)

General enquiries on Scottish Government statistics can be addressed to:

Office of the Chief Statistician  
Scottish Government  
1N.04, St Andrews House  
EDINBURGH EH1 3DG  
Telephone: (0131) 244 0442  
e-mail: [statistics.enquiries@scotland.gsi.gov.uk](mailto:statistics.enquiries@scotland.gsi.gov.uk)

Further contact details, e-mail addresses and details of previous and forthcoming publications can be found on the Scottish Government Website at [www.scotland.gov.uk/statistics](http://www.scotland.gov.uk/statistics)

### Complaints and suggestions

If you are not satisfied with our service, please write to the Chief Statistician, Mr Rob Wishart, 1N.04, St Andrews House, Edinburgh, EH1 3DG, Telephone: (0131) 244 0302, e-mail [rob.wishart@scotland.gsi.gov.uk](mailto:rob.wishart@scotland.gsi.gov.uk). We also welcome any comments or suggestions that would help us to improve our standards of service.

### ScotStat

If you would like to be consulted about new or existing statistical collections or receive notification of forthcoming statistical publications, please register your interest on the Scottish Government ScotStat website at [www.scotland.gov.uk/scotstat](http://www.scotland.gov.uk/scotstat)

### Crown Copyright

Brief extracts from the Crown Copyright material in this publication may be reproduced provided the source is fully acknowledged.