

simd Scottish Index of Multiple Deprivation

The Scottish Index of Multiple Deprivation (SIMD)

31st August 2009

Niamh Laffan
Office of the Chief Statistician

www.scotland.gov.uk/simd

simd Scottish Index of Multiple Deprivation

The SIMD - Outline

- History
- Methodology
- Common Misconceptions
- The 2009 update
 - Domains & Indicators
 - Outputs

Questions

www.scotland.gov.uk/simd

simd Scottish Index of Multiple Deprivation

SIMD – The History.

- 2002
 - SE commissioned work from SDRC
- 2003
 - SE publish SID 2003 (ward level)
- 2004
 - Data zones produced by St Andrews University
 - SE publish SIMD 2004 (data zone level)
- 2006
 - SE publish SIMD 2006 (data zone level)
- 2009
 - ...????

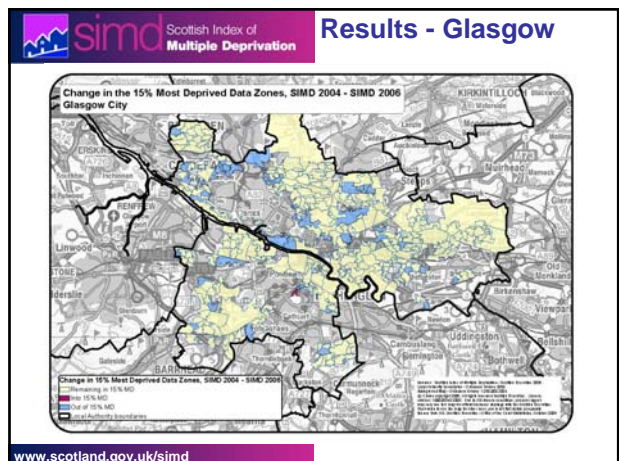
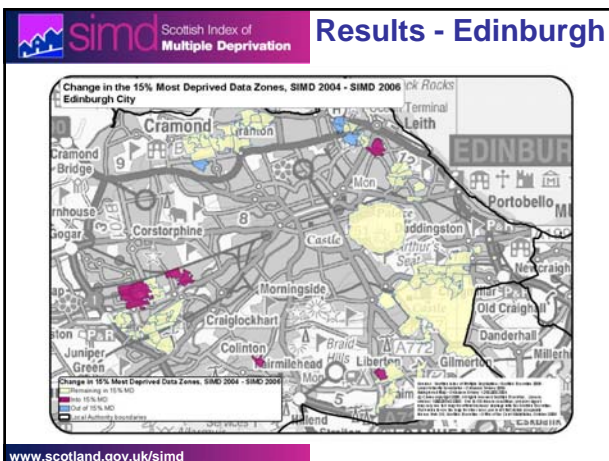
www.scotland.gov.uk/simd

simd Scottish Index of Multiple Deprivation

How is the SIMD calculated?

- Basic geography – data zone
- 38 indicators across 7 domains
- Weights
 - Income = 12
 - Employment = 12
 - Education = 6
 - Health = 6
 - Access = 4
 - Crime = 2
 - Housing = 1

www.scotland.gov.uk/simd



simc Scottish Index of Multiple Deprivation

Common Misconceptions.

- Tells us how much more deprived one area is than another.
- Tells us that deprived individuals only live in urban areas.
- Lets us make absolute comparisons over time.
- Tells us where all the rich people live.
- Picks out deprived individuals.

www.scotland.gov.uk/simd

simc Scottish Index of Multiple Deprivation

Individual Deprivation – an example

Data zone S01002101
SIMD 2006Rank = 624

www.scotland.gov.uk/simd

simc Scottish Index of Multiple Deprivation

Common Misconceptions.

- Tells us how much more deprived one area is than another.
- Tells us that deprived individuals only live in urban areas.
- Lets us make absolute comparisons over time.
- Tells us where all the rich people live.
- Picks out deprived individuals.
- It allows us to compare areas across the UK.
- It can answer all deprivation questions.

www.scotland.gov.uk/simd

simc Scottish Index of Multiple Deprivation

The 2009 update

- Why 2009?
- When?
- Domains
 - indicators
- Outputs

www.scotland.gov.uk/simd

simc Scottish Index of Multiple Deprivation

Income Deprivation Domain

- Not measuring income
- Based on benefits data
 - Income support
 - adults and children
 - Guarantee Pension Credit
 - adults
 - Job Seekers Allowance
 - adults and children
- 2004 used WFTC and DTC data
- 2009 – WTC and CTC
- Data zone SAPE
 - Total population

www.scotland.gov.uk/simd

simc Scottish Index of Multiple Deprivation

Employment Deprivation Domain

- Based on benefits data
 - Unemployment Claimant Count
 - 12 month average
 - Incapacity Benefit recipients
 - Working age
 - Severe Disablement Allowance
 - Working age
 - Compulsory New Deal Participants
- No change to 2004 indicators for 2006 or 2009
- Data zone SAPE
 - Working age population

www.scotland.gov.uk/simd

simd Scottish Index of Multiple Deprivation

Health Deprivation Domain

- Indicators used:
 - Standardised Mortality Ratio
 - Hospital Episodes related to alcohol use
 - Hospital Episodes related to drug use
 - Comparative Illness Factor
 - Emergency Admissions to Hospital
 - Prescription of drugs for anxiety, depression or psychosis
 - Live singleton births of low birth weight
- Methodological changes since 2004
- Minor changes for 2009
- Ranked, transformed, weighted

www.scotland.gov.uk/simd

simd Scottish Index of Multiple Deprivation

Education Deprivation Domain

- Indicators
 - School pupil absences
 - Pupil Performance on SQA at Stage 4
 - Working age people with no qualifications
 - 17-21 year olds enrolling into HE
 - People ages 16-18 not in full time education
- Changes between 2004 and 2006
- NEET indicator change for 2009
- Populations relevant to indicator
- Ranked, transformed, weighted

www.scotland.gov.uk/simd

simd Scottish Index of Multiple Deprivation

Crime Domain

- Relevant to Neighbourhood Deprivation
- 'SIMD crime' *not* 'Total Crime'
 - Crimes of violence
 - Drug Offences
 - Domestic Housebreaking
 - Minor Assault
 - Vandalism
- Does not include crimes in/near police station
- First included in 2006
- Total populations – rate per 10,000

www.scotland.gov.uk/simd

simd Scottish Index of Multiple Deprivation

Housing Deprivation Domain

- Census data
 - Persons in households which are overcrowded
 - Persons in households without central heating
- Same domain for SIMD 2004 and SIMD 2006
- No new indicators identified
- Data zone SAPE
 - Total population

www.scotland.gov.uk/simd

simd Scottish Index of Multiple Deprivation

Access to Services Domain

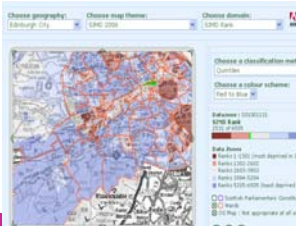
- Drive Times
 - GP
 - Shopping facilities (Supermarket in 2004)
 - Petrol Station
 - Primary and Secondary Schools (Primary only in 2004)
 - Post Office
- Public Transport (Not included in SIMD 2004)
 - GP
 - Shopping Facilities
 - Post Office
- Population weighted based on COAs
- Ranked and weighted within sub-domains
- Some changes for SIMD 2009

www.scotland.gov.uk/simd

simd Scottish Index of Multiple Deprivation

What was published - 2006

- General report with initial analysis
- Technical report
- Guidance leaflet
- Interactive mapping site
- Statistical Compendium
 - tables, charts & maps
- Background data



www.scotland.gov.uk/simd

simd Scottish Index of Multiple Deprivation

Proposed Additional Output

- Change over time
- Local Authority level analysis
- Links with outcomes data
- More guidance

www.scotland.gov.uk/simd

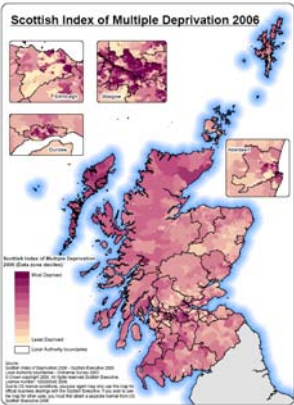
simd Scottish Index of Multiple Deprivation

ANY QUESTIONS?

Contacts:
 Neighbourhood Statistics (SNS & SIMD)
 Tel: 0131 244 0442
neighbourhoodstatistics@scotland.gov.uk

Niamh Laffan
 Tel: 0131 244 3331
niamh.laffan@scotland.gsi.gov.uk

Matt Perkins
 Tel: 0131 244 0443
matt.perkins@scotland.gsi.gov.uk



Scottish Index of Multiple Deprivation 2006

www.scotland.gov.uk/simd



simd Scottish Index of Multiple Deprivation

SIMD 2006 – National Share (part 1)

	Data Zones in LA	SIMD 2004		SIMD 2006	
		Data zones in 15% MD	% National share	Data zones in 15% MD	% National share
Glasgow City	694	374	38.3%	330	33.8%
North Lanarkshire	418	103	10.6%	84	8.6%
Edinburgh, City of	549	61	6.3%	63	6.5%
South Lanarkshire	398	66	6.8%	56	5.7%
Dundee City	179	51	5.2%	53	5.4%
Fife	453	34	3.5%	47	4.8%
Inverclyde	110	36	3.7%	42	4.3%
Renfrewshire	214	41	4.2%	36	3.7%
North Ayrshire	179	33	3.4%	33	3.4%
West Dunbartonshire	118	32	3.3%	33	3.4%
East Ayrshire	154	28	2.9%	28	2.9%

*The national share is the proportion data zones in the 15% most deprived for each Local Authority

www.scotland.gov.uk/simd

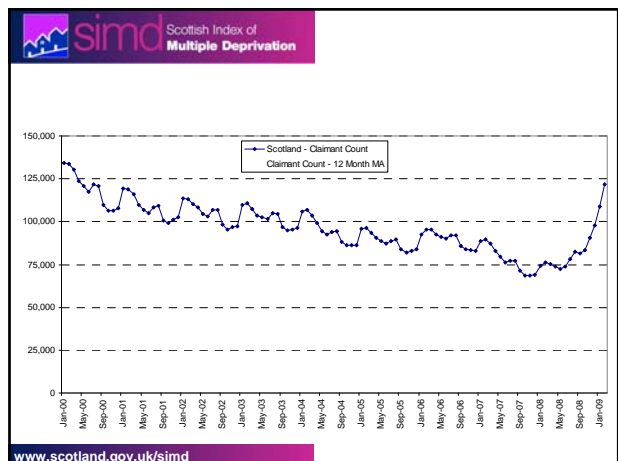
simd Scottish Index of Multiple Deprivation

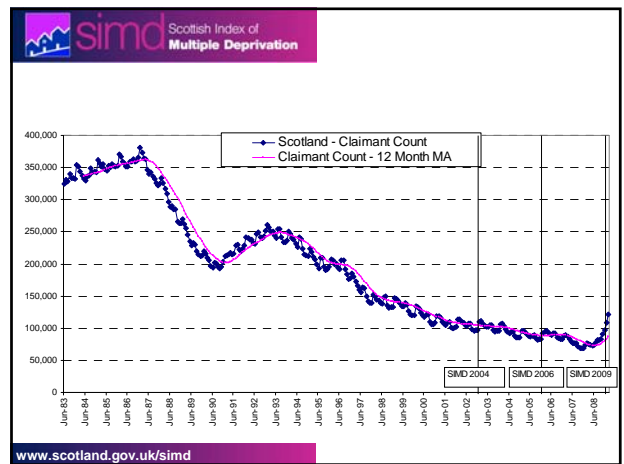
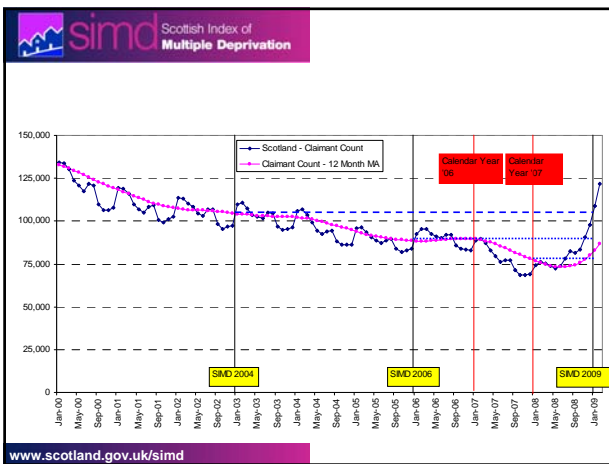
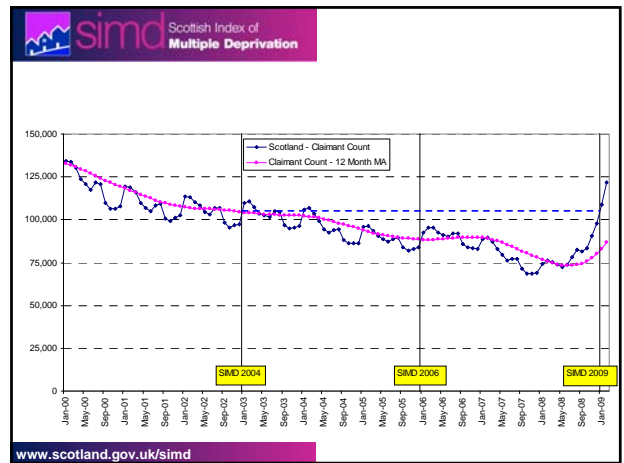
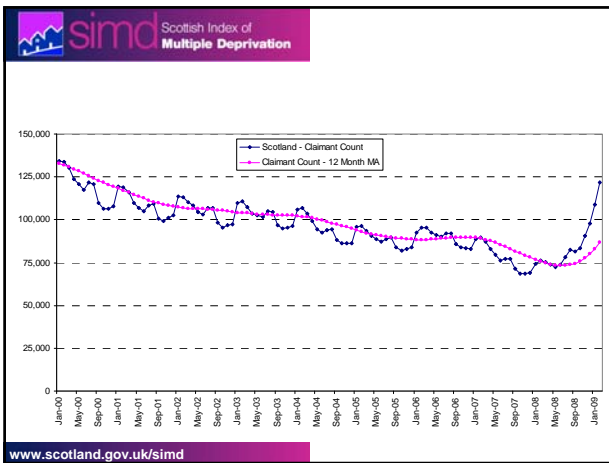
Local authority areas with more than 15 per cent local share of data zones in the 15% most deprived in the overall SIMD 2006

Local Authority	Number of data zones in LA	15% most deprived data zones			
		SIMD 2004		SIMD 2006	
		No of data zones	Local share (%)	No of data zones	Local share (%)
Glasgow City	694	374	53.9	330	47.6
Inverclyde	110	36	32.7	42	38.2
Dundee City	179	51	28.5	53	29.6
West Dunbartonshire	118	32	27.1	33	28.0
Clackmannanshire	64	10	15.6	15	23.4
North Lanarkshire	418	103	24.6	84	20.1
East Ayrshire	154	28	18.2	28	18.2
North Ayrshire	179	33	18.4	33	18.4
Renfrewshire	214	41	19.2	36	16.8

The local share is the proportion of data zones in a local authority area that are in the 15% most deprived in Scotland

www.scotland.gov.uk/simd





• QUESTIONS?

www.scotland.gov.uk/simd