

Scottish Index of Multiple Deprivation (SIMD)

NHS Lothian

18th April 2008

James Boyce
Office of the Chief Statistician
Scottish Government

Summary

- Background and methodology
- Appropriate use of the SIMD
- Summary results of the SIMD 2006:
 - Local Authority
 - 15% Most Deprived
- Outputs and results for Lothian
- SIMD vs Carstairs

What is the SIMD?

- The Scottish Index of Multiple Deprivation identifies small area concentrations of multiple deprivation across all of Scotland
- The Index allows effective targeting of policies and funding where the aim is to wholly or partly tackle or take account of area concentrations of multiple deprivation
- The first index (SIMD 2004) was published in June 2004, dividing the whole of Scotland into 6,505 areas and ranking each area in terms of multiple deprivation

Background

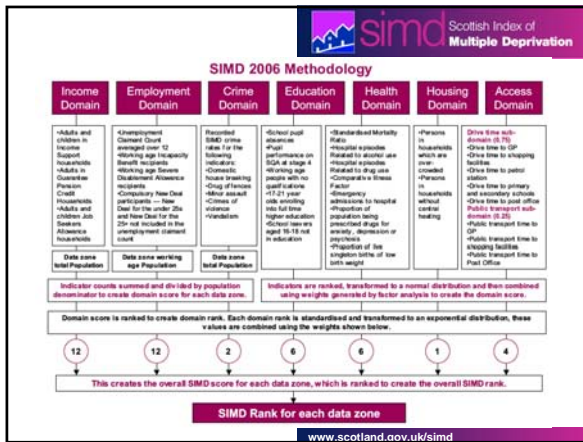
- Robust methodology used across UK
- Administrative data sources
- Stable 'data zone' geography
- Combines individual indicators on income, employment, health, education, access, housing and crime into 'domains' and overall index rank
- Rank 1 = most deprived, 6,505 = least deprived
- The most deprived 976 areas are the 15% most deprived in Scotland and these tend to be the focus of policies and funding

Carstairs

- Derived from four census indicators:
 - low social class,
 - lack of car ownership,
 - Overcrowding
 - male unemployment.
- Calculated at postcode sector level (e.g. G84 9)
- Available on the web site of Glasgow University's MRC Social and Public Health Sciences Unit
- Decile 1 (Least deprived) to Decile 10 (most deprived)

SIMD update: 2006

- Update to SIMD 2004
- Improvements to methodology and data sources
- 7 subject areas / 'domains': 37 indicators
- New crime domain using 2004 crime data
- New public transport data
- Shows *relative* changes between SIMD 2004 and 2006



Domains and Weightings

2004			2006		
Domains	weight	% of overall weight	Domains	weight	% of overall weight
Current Income	6	29	Current Income	12	28
Employment	6	29	Employment	12	28
Health	3	14	Health	6	14
Education, Skills and training	3	14	Education, Skills and training	6	14
Geographic Access and Telecommunications	2	10	Geographic Access:	4	9
			- Drive times	0.75	
			- Public transport times	0.25	
Housing	1	5	Housing	1	2
-	-	-	Crime	2	5

www.scotland.gov.uk/simd

The index does ...

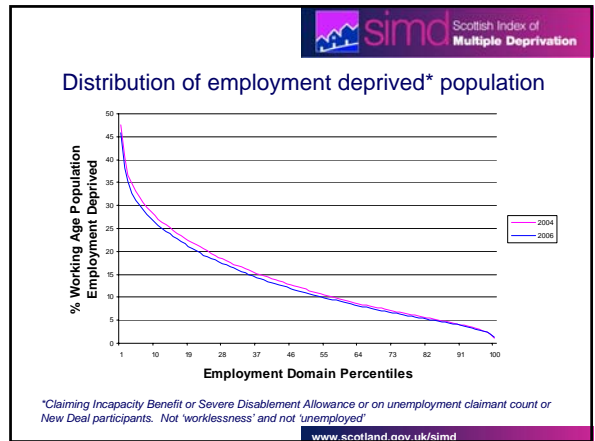
- pick out area concentrations of multiple deprivation
- provide a 'scale' of deprivation

The index does not...

- describe how much more deprived one area is than another
- make absolute comparisons over time, BUT individual indicators and the employment domain can be used
- measure affluence – least deprived areas are not necessarily 'rich' areas
- pick out deprived individuals - Not all deprived people live in the most deprived areas, and not all those living in deprived areas are deprived
- answer all deprivation questions

See SIMD 2006 Guidance Leaflet for advice on appropriate use of the index

www.scotland.gov.uk/simd



SIMD 2006 Results – National Share*

Local authority areas with the largest national share of the 15% most deprived in SIMD 2006 are

- Glasgow City (34 per cent)
- North Lanarkshire (9 per cent)
- Edinburgh, City of (6 per cent)
- South Lanarkshire (6 per cent)
- Dundee City (5 per cent)
- Fife (5 per cent)

Eilean Siar, Moray, Orkney Islands and Shetland Islands do not have any data zones in the SIMD 2006 15% most deprived

*The national share is the proportion data zones in the 15% most deprived for each Local Authority

www.scotland.gov.uk/simd

SIMD 2006 – National Share

Data Zones in LA	SIMD 2004		SIMD 2006	
	Data zones in 15% MD	% National share	Data zones in 15% MD	% National share
Glasgow City	694	37.4	330	33.8%
North Lanarkshire	418	10.3	84	8.6%
Edinburgh, City of	549	6.1	63	6.5%
South Lanarkshire	398	6.6	56	5.7%
Dundee City	179	5.1	53	5.4%
Fife	453	3.4	47	4.8%
Inverclyde	110	3.6	42	4.3%
Renfrewshire	214	4.1	36	3.7%
North Ayrshire	179	3.3	33	3.4%
West Dunbartonshire	118	3.2	33	3.4%
East Ayrshire	154	2.8	28	2.9%

*The national share is the proportion data zones in the 15% most deprived for each Local Authority

www.scotland.gov.uk/simd

Key facts from overall SIMD 2006

Local authority areas with the largest *local share* of the 15% most deprived in SIMD 2006 are

- Glasgow City (48 per cent)
- Inverclyde (38 per cent)
- Dundee City (30 per cent)
- West Dunbartonshire (28 per cent)
- Clackmannanshire (23 per cent)
- North Lanarkshire (20 per cent)
- Eilean Siar, Moray, Orkney Islands and Shetland Islands do not have any data zones in the SIMD 2006 15% most deprived

The *local share* is the proportion of data zones in a local authority area that are in the 15% most deprived

Local authority areas with more than 15 per cent *local share* of data zones in the 15% most deprived in the overall SIMD 2006

Local Authority	Number of data zones in LA	15% most deprived data zones			
		SIMD 2004		SIMD 2006	
		No of data zones	Local share (%)	No of data zones	Local share (%)
Glasgow City	694	374	53.9	330	47.6
Inverclyde	110	36	32.7	42	38.2
Dundee City	179	51	28.5	53	29.6
West Dunbartonshire	118	32	27.1	33	28.0
Clackmannanshire	64	10	15.6	15	23.4
North Lanarkshire	418	103	24.6	84	20.1
East Ayrshire	154	28	18.2	28	18.2
North Ayrshire	179	33	18.4	33	18.4
Renfrewshire	214	41	19.2	36	16.8

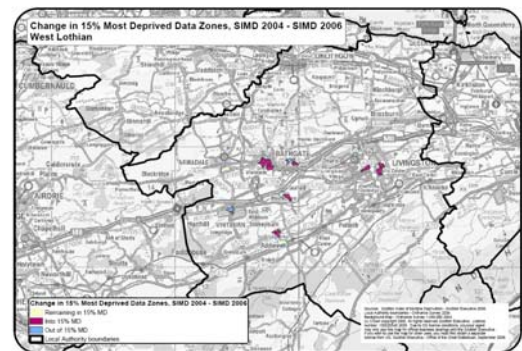
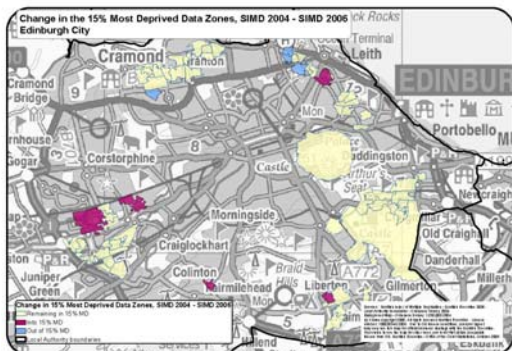
The *local share* is the proportion of data zones in a local authority area that are in the 15% most deprived in Scotland

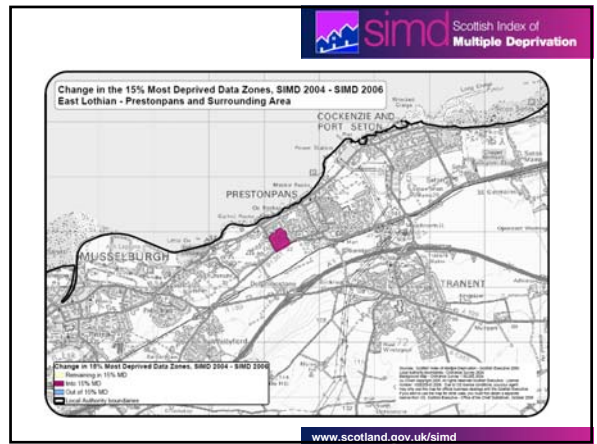
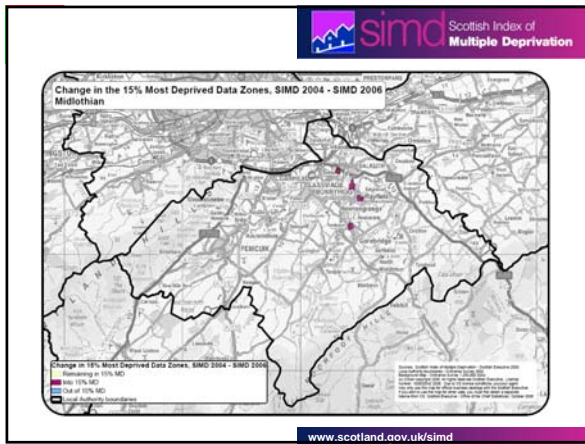
Local Authorities with between 5 and 15% local share of data zones in the 15% most deprived in the overall SIMD 2006

Local Authority	Number of data zones in LA	15% most deprived data zones			
		SIMD 2004		SIMD 2006	
		No of data zones	Local share (%)	No of data zones	Local share (%)
South Lanarkshire	398	66	16.6	56	14.1
Edinburgh, City of	549	61	11.1	63	11.5
Fife	453	34	7.5	47	10.4
Aberdeen City	267	18	6.7	27	10.1
Falkirk	197	14	7.1	19	9.6
West Lothian	211	9	4.3	14	6.6
South Ayrshire	147	13	8.8	13	8.8
Argyll & Bute	122	9	7.4	10	8.2
Stirling	110	6	5.5	7	6.4
Dumfries & Galloway	193	9	4.7	11	5.7
Highland	292	9	3.1	17	5.8
Angus	142	3	2.1	8	5.6
Perth & Kinross	175	3	1.7	9	5.1

15% most deprived data zones: change between SIMD 2004 and SIMD 2006

- Of the 976 data zones in the 15% most deprived in SIMD 2004:
 - 856 (88%) remained in the 15% most deprived areas in the SIMD 2006
 - 120 new data zones moved in and 120 moved out of the 15% most deprived areas
- Of the 120 data zones moving *in* to the 15% most deprived areas in the SIMD 2006:
 - Over 80 are ranked in the 15% most deprived for three or more SIMD 2006 domains and 89 (74%) were in the 15% to 20% in the SIMD 2004
- Of the 120 data zones moving *out* of the 15% most deprived in SIMD 2004:
 - The proportion of working age population employment deprived decreased in 113 (94%) of the 120 data zones
 - 94 (78%) moved to 15 - 20% and 112 (93%) moved to 15 - 25%





What was published

- Hardcopy and online general report with initial analysis
- Online technical report
- Hardcopy and online guidance leaflet
- An online interactive mapping website
- An online Statistical Compendium of tables, charts and maps
- Online background data for SIMD 2006

www.scotland.gov.uk/simd

Website: overview

www.scotland.gov.uk/simd

Interactive mapping Edinburgh City

Choose geography: Edinburgh City
 Choose map theme: SIMD 2006
 Choose domain: SIMD Rank

Choose a classification method: Quantiles
 Choose a colour scheme: Red to Blue

Database: SIMD Rank

Data Zones
 ■ Ranks 1-1301 (most deprived in Scotland)
 ■ Ranks 1302-2602
 ■ Ranks 2603-3903
 ■ Ranks 3904-5204
 ■ Ranks 5205-6505 (least deprived in Scotland)

Scottish Parliamentary Constituencies
 Wards
 OS Map - Not appropriate at all scales

www.scotland.gov.uk/simd

Interactive mapping Background map

Choose geography: Edinburgh City
 Choose map theme: SIMD 2006
 Choose domain: SIMD Rank

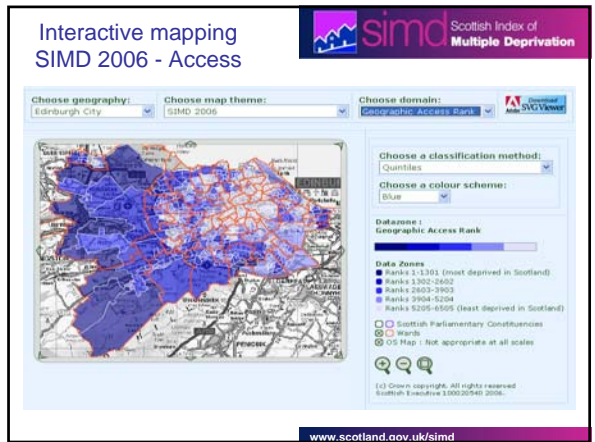
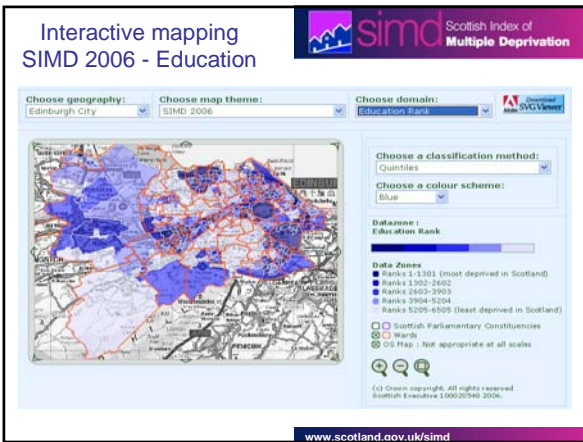
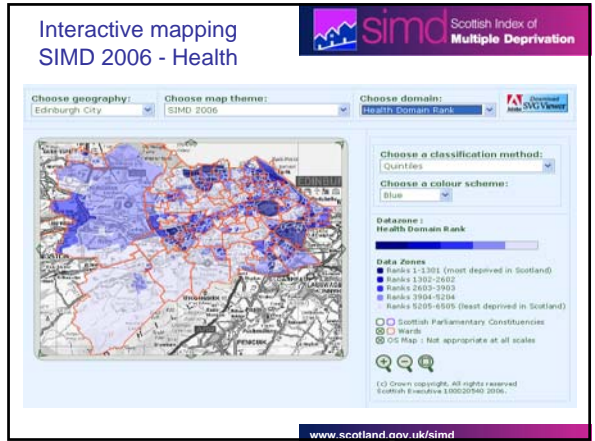
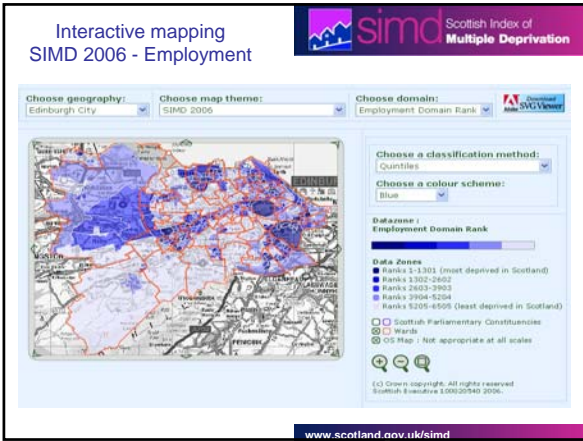
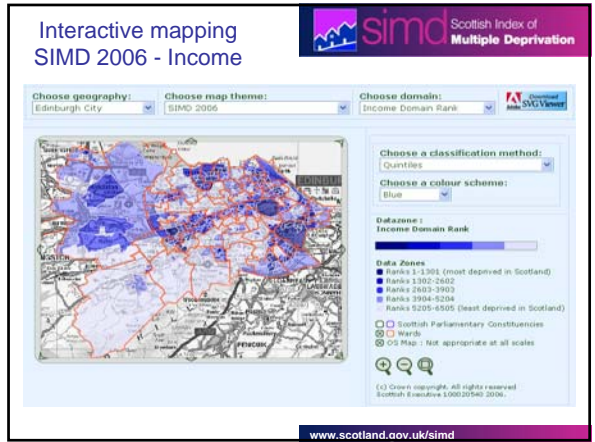
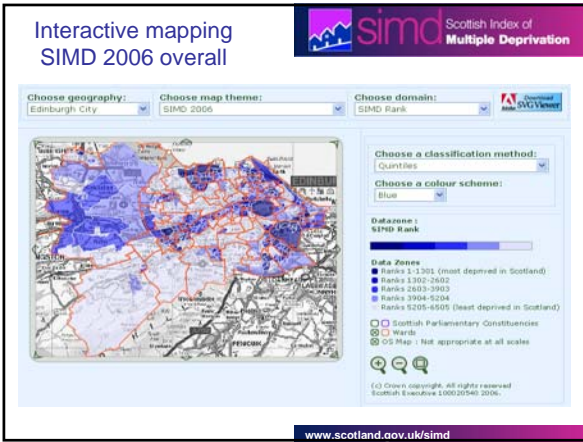
Choose a classification method: Quantiles
 Choose a colour scheme: Red to Blue

Database: SIMD Rank

Data Zones
 ■ Ranks 1-1301 (most deprived in Scotland)
 ■ Ranks 1302-2602
 ■ Ranks 2603-3903
 ■ Ranks 3904-5204
 ■ Ranks 5205-6505 (least deprived in Scotland)

Scottish Parliamentary Constituencies
 Wards
 OS Map - Not appropriate at all scales

www.scotland.gov.uk/simd



Interactive mapping
SIMD 2006 - Crime

www.scotland.gov.uk/simd

Area-based measures

- Scottish Index of Multiple Deprivation (SIMD)
 - 2004, 2006
 - Datazone geography
- Carstairs
 - 1981, 1991, 2001 (census-based)
 - postcode sector geography, also output area and datazone for 2001 only

www.scotland.gov.uk/simd

Which Deprivation Measure?

- For current estimates and trend analyses from 1997 onwards use SIMD06 (datazone)
 - Care needed when comparing SIMD04 and SIMD06
- For long term trends – from necessity - use Carstairs (postcode sector)
 - results very similar to SIMD and allow longer time trend
- To get a more accurate snapshot of the magnitude of inequalities use Carstairs at output area level (2001 population estimate)

www.scotland.gov.uk/simd

ANY QUESTIONS?

Contact:

Neighbourhood Statistics (SNS & SIMD)
Tel: 0131 244 0442
neighbourhoodstatistics@scotland.gov.uk

Matt Perkins
Tel: 0131 244 0443
matt.perkins@scotland.gsi.gov.uk

James Boyce
Tel: 0131 244 0329
james.boyce@scotland.gsi.gov.uk

www.scotland.gov.uk/simd