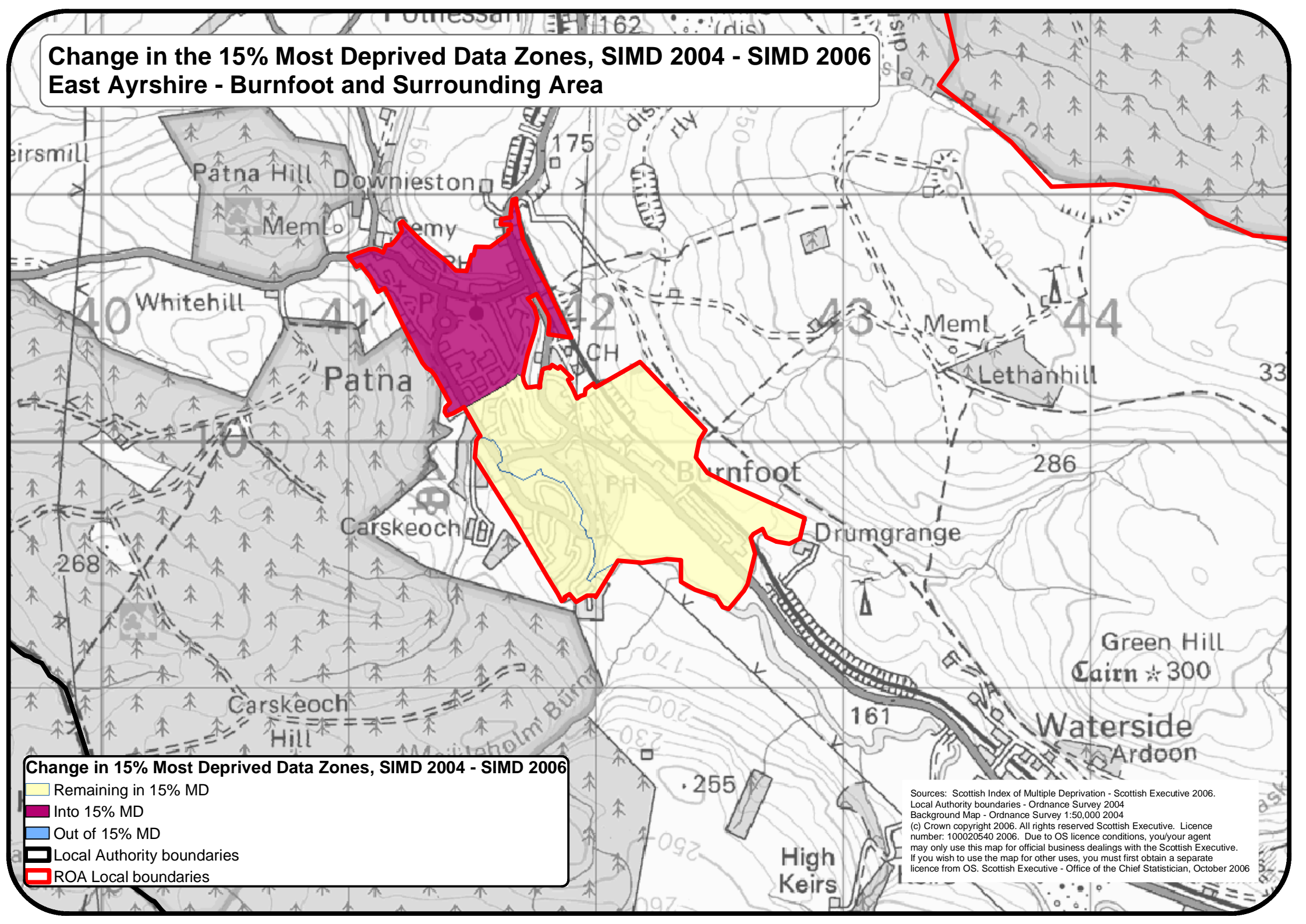


# Change in the 15% Most Deprived Data Zones, SIMD 2004 - SIMD 2006

## East Ayrshire - Burnfoot and Surrounding Area



**Change in 15% Most Deprived Data Zones, SIMD 2004 - SIMD 2006**

- Remaining in 15% MD
- Into 15% MD
- Out of 15% MD
- Local Authority boundaries
- ROA Local boundaries

Sources: Scottish Index of Multiple Deprivation - Scottish Executive 2006.  
 Local Authority boundaries - Ordnance Survey 2004  
 Background Map - Ordnance Survey 1:50,000 2004  
 (c) Crown copyright 2006. All rights reserved Scottish Executive. Licence number: 100020540 2006. Due to OS licence conditions, you/your agent may only use this map for official business dealings with the Scottish Executive. If you wish to use the map for other uses, you must first obtain a separate licence from OS. Scottish Executive - Office of the Chief Statistician, October 2006