



SCOTTISH EXECUTIVE

Media Communications Group

St Andrew's House
Regent Road
Edinburgh EH1 3DG

Telephone: 0131-244-1111

June 30, 2006

PUBLIC SECTOR EMPLOYMENT IN SCOTLAND: STATISTICS FOR 1st QUARTER 2006

<http://www.scotland.gov.uk/stats/bulletins/00515>

This news release provides statistics on those employed in the public sector in Scotland up to Quarter 1 of 2006. This covers all of the public sector as defined by UK National Accounts. This release provides a complete quarterly series from Quarter 1 1999 onwards. The quarterly data in this publication are not seasonally adjusted and therefore comparisons between years should only be made for the same quarter.

This publication is also the official release of Scottish Local Government employment statistics. These were previously published by the Executive in the Joint Staffing Watch Survey. More detailed statistics on Local Government employment are available at www.scotland.gov.uk/jointstaffingwatch or on request.

The statistics in this release are based on administrative records and surveys of individual public sector organisations. These surveys are carried out by the Scottish Executive and the Office for National Statistics (ONS). An estimate of private sector employment is also included in this release. This is derived as the difference between the Labour Force Survey employment estimate for the whole of Scotland (not seasonally adjusted) and the public sector estimate.

ONS will also be publishing quarterly public sector employment statistics for the UK on 30 June 2006. These can be found on the National Statistics website at www.statistics.gov.uk

Any comments on the presentation of these statistics should be sent to labour-market.statistics@scotland.gsi.gov.uk. Selected individual elements of this series are classified as National Statistics. More information on this can be found in the notes for news editors.

The statistics in this release will be produced quarterly.



Statistics News Release

MAIN POINTS

Public and Private Sector Employment in Scotland (Headcount)

- In quarter 1 (Q1) 2006, there were 586,400 people employed in the public sector and 1,878,600 people employed in the private sector in Scotland.
- Public sector employment in Scotland consists of Local Government including police and fire and related services (55.3%), NHS (25.6%), Civil Service (8.8%), Public Corporations (4.9%), Non Departmental Public Bodies (2.4%) and Armed Forces (2.3%).
- Public sector employment has increased by 58,800 (11.2%) since Q1 1999 and by 10,100 (1.8%) since Q1 2005. The largest increase since 1999 was within Local Government (31,000) including education services, social work services and fire and police services.
- The public sector currently accounts for 23.8% of employment in Scotland which has increased from 23.1% in Q1 1999 and 23.6% in Q1 2005.

Chart 1 Public and Private Sector Employment in Scotland, 1999-2006

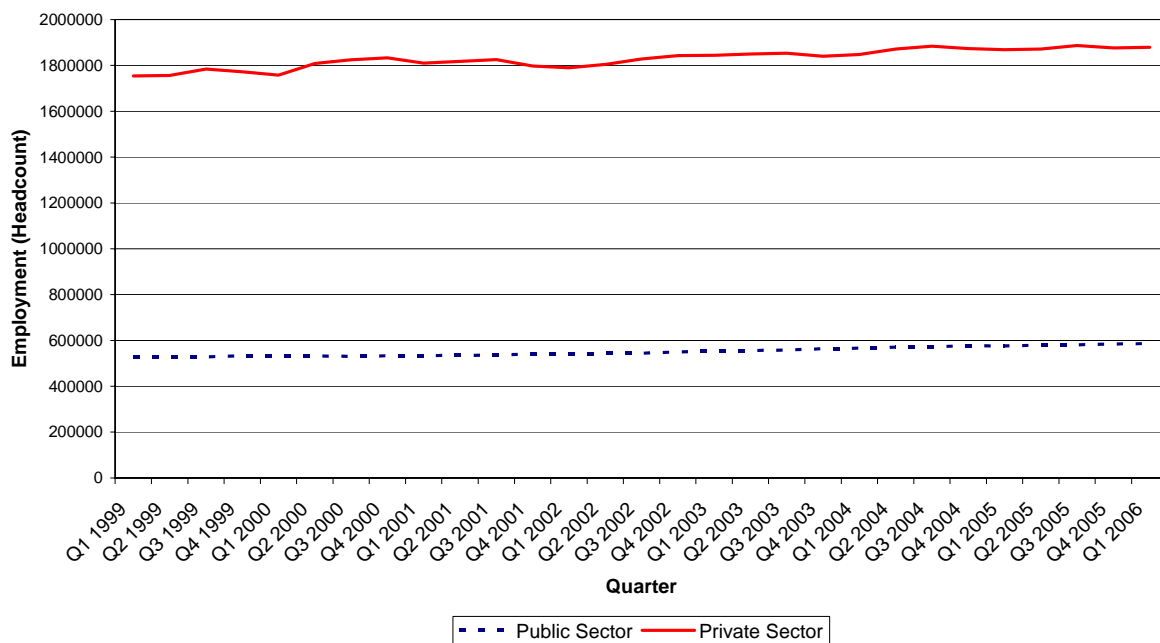
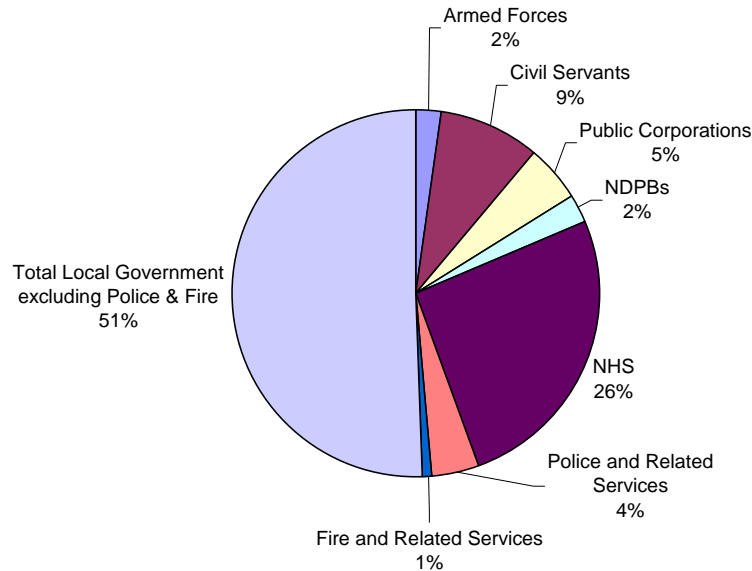


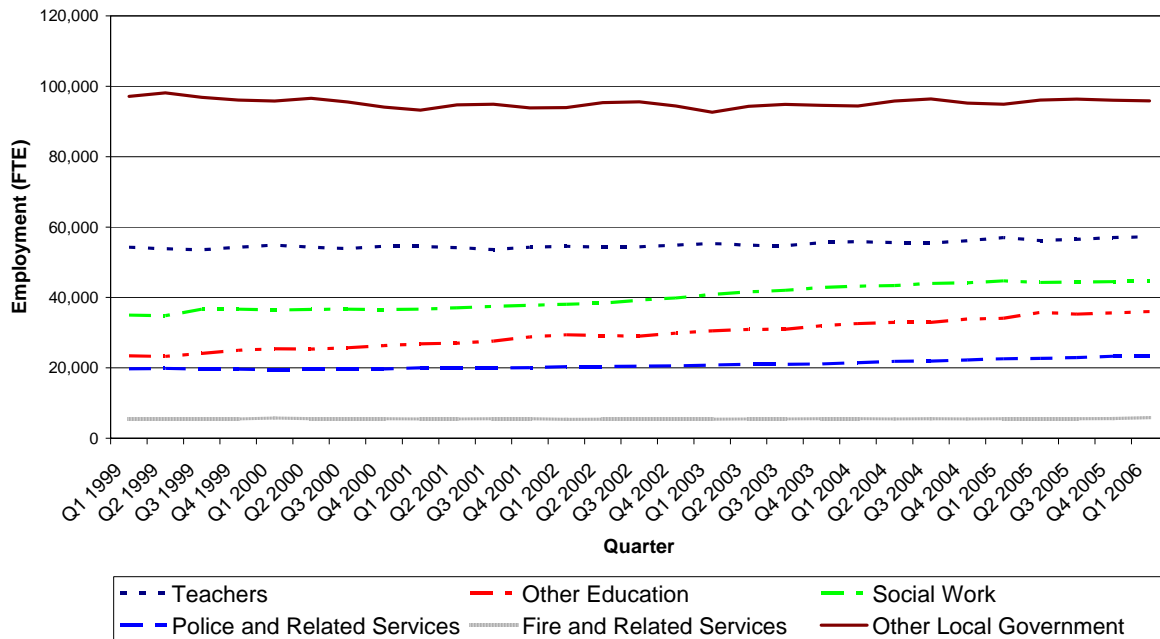
Chart 2 Breakdown of Public Sector Employment in Scotland, Q1 2006



Local Government (Full-Time Equivalent - FTE)

- Total full-time equivalent employment in Local Government (excluding Police, Fire and related services) was 233,500 in Q1 2006. This figure comprises: 57,200 teachers; 36,000 other education staff; 44,600 social work staff and 95,900 other staff.
- In Q1 2006 total employment in police and related services was 23,400 and total employment in fire and related services was 5,700.
- The number of teachers employed within Local Government has increased by 5.4% since Q1 1999 and by 0.3% since Q1 2005.
- Other Education staff within Local Government has increased by 53.9% since Q1 1999 and by 5.6% since Q1 2005. Other Education staff include other staff within schools such as classroom assistants, music instructors, laboratory assistants, library staff, clerical staff etc.
- The number of Social Work staff working within Local Government has increased by 27.6% since Q1 1999 but decreased by 0.3% since Q1 2005.
- The number of police and related services staff has increased by 18.2% since Q1 1999 and by 3.5% since Q1 2005.
- The number of fire and related services staff has increased by 4.8% since Q1 1999 and by 3.1% since Q1 2005.
- The number of other Local Government staff has decreased by 1.3% since Q1 1999 but increased by 1.0% since Q1 2005.

Chart 3 Employment in Local Government in Scotland, 1999-2006



Civil Service in Scotland (Full-Time Equivalent - FTE)

- The total number of full-time equivalent Civil Servants employed in Scotland was 48,700 in Q1 2006. This is an increase of 5.6% since Q1 1999 and an increase of 0.3% since Q1 2005.
- In Q1 2006 there were 15,400 permanent staff employed by the Scottish Executive and its associated agencies. This is an increase of 13.8% since Q1 1999 and an increase of 0.5% since Q1 2005.
- In Q1 2006 there were 31,300 permanent staff employed by other Civil Service Departments and Agencies in Scotland. This is an increase of 1.5% since Q1 1999 but a decrease of 1.4% on Q1 2005.

Chart 4 Breakdown of Scottish Executive and Associated Agencies, Q1 2006

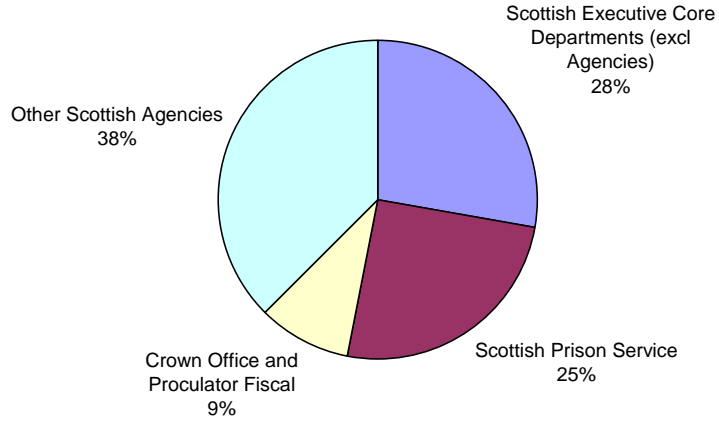
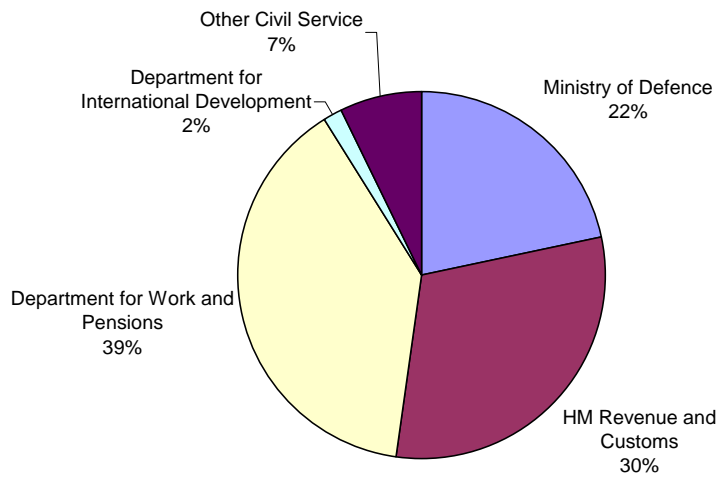


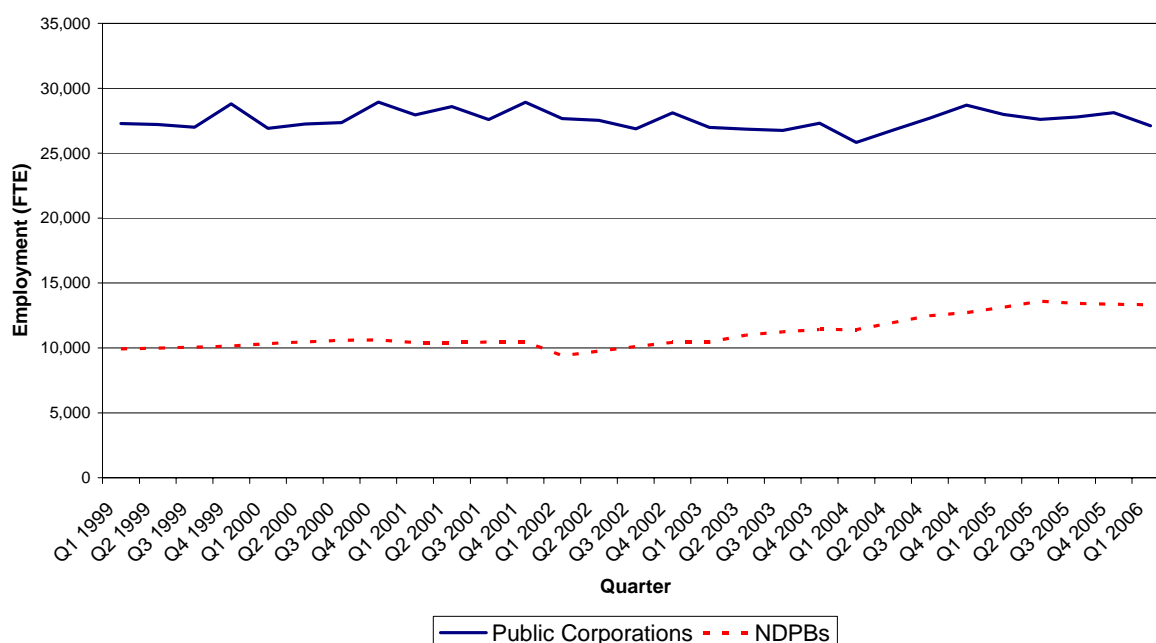
Chart 5 Breakdown of Other Civil Service in Scotland, Q1 2006



Non Departmental Public Bodies (NDPBs) and Public Corporations (Full-Time Equivalent – FTE)

- Changes in the number of staff employed within NDPBs and Public Corporations are caused by changes in the number, scope and classification of NDPBs and Public Corporations as well as increases in staff within organisations.
- The total number of full-time equivalent staff working in NDPBs and Public Corporations was 40,400 in Q1 2006. This is an increase of 8.7% since Q1 1999 but a decrease of 1.7% since Q1 2005.
- In Q1 2006 there were 27,100 FTE staff employed by Public Corporations. This is a decrease of 0.7% since Q1 1999 and a decrease of 3.2% since Q1 2005.
- In Q1 2006 there were 13,300 FTE staff employed by NDPBs. This is an increase of 34.4% since Q1 1999 and an increase of 1.5% since Q1 2005.

Chart 6 Employment in Public Corporations and NDPBs in Scotland, 1999-2006



INDEX OF TABLES

Table 1 - *Number of people employed by main sector; Scotland 1999 to 2006*

Table 2 - *Public Sector Employment by Sector; Headcount*

Table 3 - *Public Sector Employment by Sector; Full-time equivalent*

Table 4a - *Employment (Permanent Staff Only): Scottish Executive and Associated Agencies; Headcount*

Table 4b - *Employment (Permanent Staff Only): Other Civil Service in Scotland; Headcount*

Table 5a - *Employment (Permanent Staff Only): Scottish Executive and Associated Agencies; Full-time equivalent*

Table 5b - *Employment (Permanent Staff Only): Other Civil Service in Scotland; Full-time equivalent*

Table 6 - *Employment: Local Government; Headcount*

Table 7 - *Employment: Local Government; Full-time equivalent*

NOTES FOR NEWS EDITORS

1. This regular series of quarterly Scottish Public Sector Employment First Releases results from the work of a cross-departmental project, led by ONS, to improve the quality and timeliness of public sector employment statistics. This publication includes the first publication of data for Quarter 1 2006. Historical data for some areas of public sector employment have been modelled using available data. Some figures from previous publications have been revised. For more information see paragraph 16.
2. An article setting out the full details of the improvements being made to estimates of public sector employment across the UK is accessible on the National Statistics website at the following address: <http://www.statistics.gov.uk/CCI/article.asp?ID=1095>

RESULTS FOR QUARTERS PRIOR TO Q1 2005

3. Public sector data prior to Q1 2005 are based partly on estimates as actual data for all quarters are not available. Estimates prior to Q1 2005 are calculated based on available data for the following areas and time periods:
 - Quarters 2, 3 and 4 of each year prior to 2005 for the Civil Service excluding Ministry of Defence
 - Quarters 1, 2 and 4 of each year for the NHS
 - Quarters 1, 3 and 4 of each year prior to 2005 for the armed forces
 - All quarters prior to Q4 2004 for NDPBs and Public Corporations

CONCEPTS, SOURCES AND DEFINITIONS

4. The public sector comprises central government, local government, and public corporations as defined for the UK National Accounts. The Sector Classifications Guide (MA23) provides information on the classification of organisations and institutions in the National Accounts. <http://www.statistics.gov.uk/CCI/SearchRes.asp?term=ma23>
5. Central government includes all administrative departments of government and other central agencies and non-departmental public bodies (NDPBs). This sector also includes HM Forces and the NHS. NDPBs within this publication are those defined within National Accounts as NDPBs and include both Scottish NDPBs and UK NDPBs with employees in Scotland. Advisory NDPBs are also included in this publication.
6. Since the last publication of this series further UK NDPBs with staff in Scotland have been identified and have been added into these statistics. These are added into the data from Q1 1999 onwards. The extra NDPBs which are now included are:

Construction Industry Training Board
Medical Research Council
Sea Fish Industry Authority
Equal Opportunities Commission
United Kingdom Atomic Energy Authority
Community Development Foundation
Commission for Racial Equality
Disability Rights Commission

7. Data on NHS employment in Scotland for Q4 2005 and Q1 2006 has been estimated using projections based on previous data. Information on employment in the NHS in Scotland can be found on the Information Services Division, NHS National Services Scotland's website at:
http://www.isdscotland.org/isd/info3.jsp?pParentID=799&pContentID=1346&p_applic=CCC&p_service=Content.show&
8. According to the National Accounts definition of the public sector General Medical Practitioners (GMP) and General Dental Practitioners (GDP) are not included in the public sector and are therefore not included in the figures in the publication. However data on GMPs and GDPs are available and the table below shows the most recent data available.

Data on GMPs and GDPs as at September 2005

	Headcount	Full Time Equivalent
General Medical Practitioners	4538	4073.8
General Dental Practitioners	2266	2266.0

Source: ISD Scotland website

9. Local government comprises all government units with a local remit. It includes: Education teaching staff and Education other staff; Social Workers; Police and related services; Fire and related services; and other staff. Other staff contains: corporate services; central support; planning and economic development; housing; roads and transport; arts, sports and leisure; libraries, museums and galleries; trading standards; staff of district court; environmental services; Direct Labour Organisation (DLO); Direct Service Organisation (DSO) staff and National Parks staff. Joint Staffing Watch Survey data is collected based on those employed by Local Government organisations. Due to definitional issues, this data may differ from other sources of information for the individual sectors of Local Government. More information on these definitional issues can be found at: <http://www.scotland.gov.uk/Publications/2005/03/20889/55029>
10. Public corporations are companies or quasi-corporations controlled by government. Examples include British Nuclear Fuels plc and Post Office Ltd. These companies receive more than half their income from sales of goods or services into the market place.
11. Public Corporations within this publication include Scottish Public Corporations and UK Public Corporations with a presence in Scotland. Data for the UK Public Corporations with a presence in Scotland are estimated based on UK data and business survey information. The UK Public Corporations included in this data are:

Civil Aviation Authority
 British Waterways
 The Crown Estate Commissioners
 Post Office LTD
 Horse Race Totalisator Board
 Driving Standards Agency
 Qinetiq LTD
 Vehicle and Operator Services
 Ordnance Survey
 Defence Aviation Repair Agency

Army Base Repair Organisation
N.A.A.F.I.
The British Council
Remploy LTD
British Nuclear Fuels PLC
OFCOM
Magnox Electric PLC
Channel Four Television Corporation
British Energy LTD
British Energy Generation (UK) LTD

12. A recent review of the BBC's status in National Accounts determined that the BBC should no longer be classified as a public corporation but instead is now classified as Central Government. This classification has been backdated to 1946. For this reason BBC has been removed from the Public Corporations data in this publication but is still included in the total estimate of public sector. Data on the BBC employment in Scotland is estimated based on UK data and business survey information.
13. Headcount estimates are based on the number of employees with an employment contract who are being paid by the organisation. Employees can be permanent, on a fixed-term contract or employed on a casual basis. Self-employed, contract workers, and agency workers are excluded.
14. As well as the headcount estimates, estimates have also been produced for the number of employees on a full-time equivalent (FTE) basis. This is based on converting part-time employees' hours into a full-time employee equivalent, and provides a better indicator of total labour input than a simple headcount.
15. Tables 4a, 4b, 5a and 5b contain data on Civil Service permanent staff only. The totals for Civil Service in tables 2 and 3 also include casual staff.
16. The statistics published here are derived from the relevant departments and devolved governments plus comprehensive quarterly surveys of the home Civil Service, Non-Departmental Public Bodies, and Public Corporations, carried out by ONS. The following list shows the data sources used to calculate total public sector employment.

Sources of Public Sector Employment estimates

Central Government

Department for Work and Pensions – Direct and Civil Service Statistics, Cabinet Office
Department for International Development – Direct and Civil Service Statistics, Cabinet Office
HM revenue and Customs – Direct and Civil Service Statistics, Cabinet Office
Other Central Government – Civil Service Statistics, Cabinet Office

Local Government

Education Teachers – Joint Staffing Watch Survey
Education Others – Joint Staffing Watch Survey

Police and Related Services – Joint Staffing Watch Survey

Fire and Related Services – Joint Staffing Watch Survey

Social Work – Joint Staffing Watch Survey

Other staff – Joint Staffing Watch Survey

National Health Service

Information Services Division, NHS
National Services Scotland

HM Forces

Ministry of Defence

Public Corporations

Office for National Statistics, Inter
Departmental Business Register

Non-Departmental Public Bodies

Direct, Office for National Statistics, Inter
Departmental Business Register

Revisions

17. Data in this publication are revised where appropriate. These revisions are generally caused by revisions to other sources of data, such as the Labour Force Survey due to new population estimates, and revisions to the projections in health data, as actual data becomes available. However some revisions are unforeseen due to revisions in survey estimates provided to the Office for National Statistics and revisions based on more up to date data. All revisions are highlighted in the data tables.

18. A revisions policy outlining the timings of the different planned revisions is being developed. This will be published with the next quarters Public Sector Employment release.

Future Publications

19. In future, public sector employment statistics will be published every quarter and the release timetable will be pre-announced in National Statistics Updates. The next quarterly first release will be published in September 2006.

20. Work is currently ongoing to make this publication a National Statistics publication.

General

21. Details of the policy governing the release of new data are available from the press office. Also available is a list of the names of those given pre-publication access to the contents of this release.

Further details are available at <http://www.scotland.gov.uk/stats/bulletins/00515>

Statistical Contact: David McPhee 0141 242 5451

Press Contact: Karen McNally: 0131 244 2967

Date: June 30, 2006

1. Number of people employed by main sector; Scotland 1999 to 2006^{1,2,3}
Not Seasonally adjusted, Headcount

		Total		Public Sector		Private Sector		% Public Sector
		Labour Force Survey Employment ⁴	Annual Change	Level ^{5,6}	Annual Change	Level ^{5,6}	Annual Change	
Q1	1999	2,282,000	~	527,600	~	1,754,400	~	23.1%
Q2	1999	2,284,000	~	527,600	~	1,756,400	~	23.1%
Q3	1999	2,313,000	~	528,400	~	1,784,600	~	22.8%
Q4	1999	2,306,000	~	533,300	~	1,772,700	~	23.1%
Q1	2000	2,290,000	8,000	532,200	4,700	1,757,800	3,300	23.2%
Q2	2000	2,341,000	57,000	532,200	4,600	1,808,800	52,400	22.7%
Q3	2000	2,356,000	43,000	530,900	2,400	1,825,100	40,600	22.5%
Q4	2000	2,367,000	61,000	533,400	100	1,833,600	60,900	22.5%
Q1	2001	2,344,000	54,000	533,900	1,600	1,810,100	52,400	22.8%
Q2	2001	2,353,000	12,000	535,200	3,000	1,817,800	9,000	22.7%
Q3	2001	2,361,000	5,000	535,500	4,600	1,825,500	400	22.7%
Q4	2001	2,339,000	- 28,000	541,200	7,800	1,797,800	- 35,800	23.1%
Q1	2002	2,331,000	- 13,000	541,300	7,400	1,789,700	- 20,400	23.2%
Q2	2002	2,347,000	- 6,000	543,100	7,900	1,803,900	- 13,900	23.1%
Q3	2002	2,373,000	12,000	544,500	9,000	1,828,500	3,000	22.9%
Q4	2002	2,393,000	54,000	550,400	9,100	1,842,600	44,900	23.0%
Q1	2003	2,397,000	66,000	552,400	11,100	1,844,600	54,900	23.0%
Q2	2003	2,406,000	59,000	556,500	13,400	1,849,500	45,600	23.1%
Q3	2003	2,411,000	38,000	557,800	13,300	1,853,200	24,700	23.1%
Q4	2003	2,404,000	11,000	564,100	13,700	1,839,900	- 2,700	23.5%
Q1	2004	2,415,000	18,000	566,900	14,500	1,848,100	3,500	23.5%
Q2	2004	2,442,000	36,000	570,100	13,600	1,871,900	22,400	23.3%
Q3	2004	2,456,000	45,000	571,600	13,700	1,884,400	31,300	23.3%
Q4	2004	2,451,000	47,000	576,000	12,000	1,875,000	35,000	23.5%
Q1	2005	2,445,000	30,000	576,300	9,300	1,868,700	20,700	23.6%
Q2	2005	2,452,000	10,000	580,500	10,300	1,871,500	- 300	23.7%
Q3	2005	2,468,000	12,000	581,300	9,700	1,886,700	2,300	23.6%
Q4	2005	2,461,000	10,000	584,400	8,300	1,876,600	1,700	23.7%
Q1	2006	2,465,000	20,000	586,400	10,100	1,878,600	9,900	23.8%

Sources: Labour Force Survey
Joint Staffing Watch Survey
Information Services Division, NHS National Services Scotland
Quarterly Public Sector Employees Survey
Inter-Departmental Business Register, Office for National Statistics
Ministry of Defence
HM Revenue and Customs
Department for Work and Pensions
Department for International Development
Civil Service Statistics

Notes:

- Public sector figures include estimates for NHS. NHS quarterly workforce data are estimates based on the time series of actual annual data. Estimated data will be revised in future publications with the actual figures. For more information see background note 7
- Where quarterly data are not available the data are estimated from available data. More information can be found in background note 3
- Data based on National Accounts definition. For more information see background note 4
- LFS figures are rounded to the nearest thousand. Q1 data based on Feb - April quarter. Q2 data based on May - July quarter. Q3 data based on Aug - Oct quarter. Q4 data based on Nov - Jan quarter.
- Figures have been rounded to the nearest hundred
- Public sector employment levels, and hence private sector employment levels, have been revised for every quarter due to improved coverage of the estimates. More information can be found in background note 6.
- Figures have been revised since previous publication. For more information see background note 17

2. Public Sector Employment by Sector; Headcount^{1,2,3,4}

		Armed Forces ⁵	Civil Servants	Public Corporations ⁶	NDPBs ⁷	NHS ⁸	Police and Related Services	Fire and Related Services	Total Local Government excluding Police & Fire	Total ^{6,7,9}
Q1	1999	14,800	48,300	28,800	10,700	129,000	20,400	5,600	267,400	527,600
Q2	1999	14,900	48,400	28,700	10,700	129,100	20,500	5,600	267,000	527,600
Q3	1999	15,000	48,400	28,500	10,800	129,700	20,100	5,600	267,400	528,400
Q4	1999	15,100	48,400	30,400	10,900	129,800	20,100	5,600	270,100	533,300
Q1	2000	15,100	48,300	28,400	11,100	129,800	20,000	5,700	270,800	532,200
Q2	2000	15,100	48,300	28,700	11,200	129,900	20,100	5,600	270,200	532,200
Q3	2000	15,000	48,300	28,900	11,400	130,100	20,200	5,600	268,300	530,900
Q4	2000	14,900	48,300	30,600	11,400	130,400	20,200	5,600	268,800	533,400
Q1	2001	14,700	48,500	29,500 ^f	11,200	130,800	20,500	5,600	269,900	533,900
Q2	2001	14,500	48,800	30,200	11,200	131,400	20,600	5,600	269,700	535,200
Q3	2001	14,200	49,100	29,100	11,200	132,100	20,600	5,700	270,000	535,500
Q4	2001	13,900	49,400	30,600	11,200	133,100	20,700	5,600	273,300	541,200
Q1	2002	13,600	49,700	29,200	10,000	134,200	20,900	5,500	274,500	541,300
Q2	2002	13,500	49,800	29,100	10,400	135,500	21,000	5,500	274,700	543,100
Q3	2002	13,400	49,900	28,400	10,800	136,800	21,100	5,500	274,900	544,500
Q4	2002	13,500	50,000	29,700	11,100	138,100	21,200	5,600	277,500	550,400
Q1	2003	13,600	50,200	28,500	11,200	139,400	22,100	5,500	278,200	552,400
Q2	2003	13,800	50,700	28,400	11,700	140,600	21,700	5,600	280,300	556,500
Q3	2003	14,000	51,200	28,300	12,000	141,700	21,700	5,600	279,400	557,800
Q4	2003	14,100	51,800	28,900	12,200	142,600	21,900	5,700	283,000	564,100
Q1	2004	14,100	52,400	27,300	12,200	143,400	22,400	5,700	285,600	566,900
Q2	2004	14,200	51,900 ^f	28,300 ^f	12,800	143,800	22,700	5,600	287,000	570,100
Q3	2004	14,100	51,900 ^f	29,300 ^f	13,300	144,100	22,700	5,700	286,800	571,600
Q4	2004	13,900	51,400 ^f	30,300 ^f	13,800	145,400	23,000	5,600	289,000	576,000
Q1	2005	13,300	51,400 ^f	29,600	14,000	146,300	23,300	5,700	289,000	576,300
Q2	2005	13,200	51,500	29,200	14,500	147,300	23,400 ^f	5,700	291,900	580,500
Q3	2005	12,900	51,900	29,400	14,400	148,000	23,700	5,700	291,700	581,300
Q4	2005	13,100	51,800	29,800	14,200	149,000	24,200 ^f	5,700	292,800 ^f	584,400
Q1	2006	13,500	51,800	28,800	14,300	150,000	24,200	5,800	294,400	586,400

Sources: Joint Staffing Watch Survey
Information Services Division, NHS National Services Scotland
Quarterly Public Sector Employees Survey
Inter-Departmental Business Register, Office for National Statistics
Ministry of Defence
HM Revenue and Customs
Department for Work and Pensions
Department for International Development
Civil Service Statistics

Notes:

- All figures have been rounded to the nearest hundred
- Totals may not add to the sum of the parts due to rounding
- Data based on National Accounts definition. For more information see background note 4
- Where quarterly data are not available the data are estimated from available data. More information can be found in background note 3
- Armed Forces data for Q1 2005 refer to April 2005, Q2 2005 data refer to July 2005, Q3 2005 data refer to October 2005 and Q4 2005 data refer to January 2006.
- The BBC has been reclassified from a Public Corporation to Central Government. The BBC has been removed from the Public Corporation series for all time points. The BBC has been included in the total public sector estimate but is not included in any individual sector breakdown. More information can be found in background note 12
- Estimates have been revised for every quarter due to improved coverage of organisations and classification changes. More information can be found in background note 6.
- NHS quarterly workforce data are estimates based on the time series of actual annual data. Estimated data will be revised in future publications with the actual figures. For more information see background note 7
- Data for Scottish Parliament, Scottish Business Ombudsman, Office of the Scottish Charity Regulator, Forestry Commission, Electoral Commission and BBC are included in the total public sector but are not included in any individual sector breakdown.
- Figures have been revised since previous publication. For more information see background note 17.

3. Public Sector Employment by Sector; Full-time equivalent^{1,2,3,4}

		Armed Forces ⁵	Civil Servants	Public Corporations ⁵	NDPBs ⁷	NHS ⁸	Police and Related Services	Fire and Related Services	Total Local Government excluding Police & Fire	Total ^{6,7,9}
Q1	1999	14,800	46,200	27,300	9,900	106,000	19,800	5,500	209,800	441,600
Q2	1999	14,900	46,300	27,200	10,000	106,200	19,800	5,500	210,100	442,400
Q3	1999	15,000	46,300	27,000	10,100	107,000	19,600	5,500	211,200	444,200
Q4	1999	15,100	46,200	28,800	10,200	106,900	19,600	5,500	212,000	447,000
Q1	2000	15,100	46,200	26,900	10,300	106,900	19,500	5,500	212,600	445,800
Q2	2000	15,100	46,100	27,200 ^f	10,500	107,000	19,500	5,500 ^f	212,800	446,600
Q3	2000	15,000	46,100	27,400	10,600	107,300	19,600	5,500	211,800	446,100
Q4	2000	14,900	46,100	28,900	10,600	107,600	19,700	5,500	211,500	447,800
Q1	2001	14,700	46,300	28,000 ^f	10,400	108,100	20,000	5,500	211,100	447,100
Q2	2001	14,500	46,500	28,600	10,400	108,700	20,000	5,500	212,900	450,300
Q3	2001	14,200	46,900	27,600	10,500	109,500	20,000	5,500	213,600	450,900
Q4	2001	13,900	47,200	28,900	10,400	110,400	20,100	5,500	214,700	454,300
Q1	2002	13,600	47,400	27,700	9,400	111,400	20,300	5,400	216,000	454,400
Q2	2002	13,500	47,400	27,500	9,800	112,500	20,400	5,400	217,200	456,900
Q3	2002	13,400	47,300	26,900	10,100	113,600	20,500	5,400	218,100	458,700
Q4	2002	13,500	47,300	28,100	10,400	114,800	20,600	5,400	218,900	462,400
Q1	2003	13,600	47,500	27,000	10,400	115,900	20,800	5,400	219,200	463,300
Q2	2003	13,800	47,800	26,800	11,000	116,900	21,000	5,500	221,400	467,800
Q3	2003	14,000	48,400	26,800	11,200	117,900	21,000	5,500	222,300	470,700
Q4	2003	14,100	49,000	27,300	11,400	118,700	21,100	5,500	224,800	475,500
Q1	2004	14,100	49,600	25,800	11,400	119,300	21,500	5,500	225,800	476,700
Q2	2004	14,200	49,300 ^f	26,800 ^f	12,000	119,700	21,800	5,500	227,500	480,300
Q3	2004	14,100	49,300 ^f	27,700 ^f	12,500	119,900	21,900	5,500	228,700	483,100
Q4	2004	13,900	48,700 ^f	28,700 ^f	12,700	121,200	22,300	5,500	229,200	485,700
Q1	2005	13,300	48,600 ^f	28,000	13,100	122,000	22,600	5,600	230,600	487,200
Q2	2005	13,200	48,700	27,600	13,600	122,900	22,700	5,500 ^f	232,100	489,800
Q3	2005	12,900	49,000	27,800	13,400	123,300	22,900	5,500	232,400	490,600
Q4	2005	13,100	48,800	28,100	13,400	124,300	23,300 ^f	5,600	233,000 ^f	493,000
Q1	2006	13,500	48,700	27,100	13,300	125,100	23,400	5,700	233,500	493,800

Sources: Joint Staffing Watch Survey
Information Services Division, NHS National Services Scotland
Quarterly Public Sector Employees Survey
Inter-Departmental Business Register, Office for National Statistics
Ministry of Defence
HM Revenue and Customs
Department for Work and Pensions
Department for International Development
Civil Service Statistics

Notes:

- All figures have been rounded to the nearest hundred
- Totals may not add to the sum of the parts due to rounding
- Data based on National Accounts definition. For more information see background note 4
- Where quarterly data are not available the data are estimated from available data. More information can be found in background note 3
- Armed Forces data for Q1 2005 refer to April 2005, Q2 2005 data refer to July 2005, Q3 2005 data refer to October 2005 and Q4 2005 data refer to January 2006.
- The BBC has been reclassified from a Public Corporation to Central Government. The BBC has been removed from the Public Corporation series for all time points. The BBC has been included in the total public sector estimate but is not included in any individual sector breakdown. More information can be found in background note 12
- Estimates have been revised for every quarter due to improved coverage of organisations and classification changes. More information can be found in background note 6
- NHS quarterly workforce data are estimates based on the time series of actual annual data. Estimated data will be revised in future publications with the actual figures. For more information see background note 7
- Data for Scottish Parliament, Scottish Business Ombudsman, Office of the Scottish Charity Regulator, Forestry Commission, Electoral Commission and BBC are included in the total public sector but are not included in any individual sector breakdown.
- Figures have been revised since previous publication. For more information see background note 17.

4 (a) Employment (Permanent Staff Only): Scottish Executive and Associated Agencies; Headcount^{1,2,3}

		Scottish Executive Core Departments (excl Agencies) ⁴	Scottish Prison Service	Crown Office and Procudator Fiscal	Other Scottish Agencies	Total
Q1	1999	3,800	4,900	1,100	4,200	14,100
Q2	1999	3,800	4,900	1,200	4,300	14,100
Q3	1999	3,900	4,800	1,200	4,300	14,100
Q4	1999	3,900	4,700	1,200	4,300	14,100
Q1	2000	3,900	4,700	1,200	4,300	14,000
Q2	2000	4,000	4,600	1,200	4,200	14,000
Q3	2000	4,000	4,600	1,200	4,200	14,000
Q4	2000	4,100	4,500	1,200	4,200	14,000
Q1	2001	4,100	4,500	1,200	4,300	14,100
Q2	2001	4,200	4,500	1,200	4,300	14,200
Q3	2001	4,200	4,500	1,300	4,400	14,400
Q4	2001	4,300	4,500	1,300	4,500	14,600
Q1	2002	4,300	4,600	1,300	4,600	14,800
Q2	2002	4,400	4,600	1,300	4,700	14,900
Q3	2002	4,400	4,600	1,400	4,700	15,100
Q4	2002	4,400	4,600	1,400	4,700	15,200
Q1	2003	4,500	4,500	1,500	4,800	15,300
Q2	2003	4,500	4,500	1,500	4,900	15,400
Q3	2003	4,500	4,400	1,500	5,100	15,500
Q4	2003	4,500	4,300	1,500	5,300	15,600
Q1	2004	4,500	4,300	1,500	5,500	15,800
Q2	2004	4,600	4,200	1,400	5,700	15,900
Q3	2004	4,500	4,300	1,400	5,600 ^r	15,800 ^r
Q4	2004	4,500	4,200	1,400	5,700	15,900
Q1	2005	4,600	4,200	1,400	5,700 ^r	16,000 ^r
Q2	2005	4,600	4,200	1,400	5,800	16,000
Q3	2005	4,600	4,200	1,500	5,900	16,200
Q4	2005	4,600	4,000	1,500	5,900	16,100
Q1	2006	4,400	4,000	1,500	6,100	16,100

Sources: Quarterly Public Employees Survey
Civil Service Statistics

Notes:

1. All Figures are rounded to the nearest hundred
2. Totals may not add to the sum of the parts due to rounding
3. Where quarterly data are not available the data are estimated from available data. More information can be found in background note 3
4. 1999 figures are for the Scottish Office.
- r. Figures have been revised since the previous publication. For more information see background note 17

4 (b) Employment (Permanent Staff Only): Other Civil Service in Scotland; Headcount^{1,2,3}

		Ministry of Defence	HM Revenue and Customs ⁴	Department for Work and Pensions ⁵	Department for International Development	Scotland Office	Other Civil Service ⁶	Total
Q1	1999	9,300	7,800	12,800	400	~	1,900	32,400
Q2	1999	9,300	7,700	13,100	400	~	1,900	32,600
Q3	1999	9,300	7,700	13,200	400	~	1,900	32,800
Q4	1999	9,200	7,700	13,300	500	~	1,900	33,000
Q1	2000	9,200	7,700	13,400	500	20	1,900	33,200
Q2	2000	9,300	7,800	13,400	500	30	1,900	33,300
Q3	2000	9,400	7,800	13,500	500	50	1,900	33,400
Q4	2000	9,400	7,900	13,500	500	60	1,900	33,500
Q1	2001	9,000	7,900	13,700	500	70	1,800	33,600
Q2	2001	9,000	7,800	13,900	500	80	1,800	33,600
Q3	2001	8,900	7,800	13,600	500	80	1,800	33,600
Q4	2001	8,900	7,900	14,300	500	80	1,800	33,700
Q1	2002	8,900	8,100	14,300	500	80	1,800	33,700
Q2	2002	8,800	8,500	14,900	500	80	1,900	33,600
Q3	2002	8,700	8,900	14,100	500	80	2,000	33,700
Q4	2002	7,300	9,400	13,900	500	80	2,100	33,800
Q1	2003	7,300	9,900	13,900	500	80	2,300	34,000
Q2	2003	7,200	10,200	14,900	500	80	2,300	34,400
Q3	2003	7,200	10,300	14,200	500	70	2,400	34,800
Q4	2003	7,200	10,400	14,500	500	70	2,400	35,300
Q1	2004	7,300	10,400	14,800	500	60	2,400	35,600
Q2	2004	7,100	10,300 ^f	14,600	500	60	2,300	35,000^f
Q3	2004	7,000	10,200 ^f	14,800	500	80	2,300	35,000^f
Q4	2004	6,900	10,100 ^f	14,500	500	80	2,300	34,500^f
Q1	2005	6,900	10,000 ^f	13,800	500	70	2,400	33,600^f
Q2	2005	6,900	10,100	13,500	500	60	2,400	33,500
Q3	2005	7,000	10,200	13,400	500	60	2,400	33,500
Q4	2005	7,000	10,200	13,300	600	60	2,400	33,400
Q1	2006	7,000	10,200	13,300	600	60	2,400	33,400

Sources: HM Revenues and Customs
Department for Work and Pensions
Department for International Development
Civil Service Statistics
Ministry of Defence

Notes:

1. All Figures are rounded to the nearest hundred except for the Scotland Office figures which are rounded to the nearest ten.
 2. Totals may not add to the sum of the parts due to rounding
 3. Where quarterly data are not available the data are estimated from available data. More information can be found in background note 3
 4. Data prior to 2005 for HM Revenue and Customs are calculated from the Inland Revenue and HM Customs and Excise
 5. Data prior to 2001 for the Department for Work and Pensions are calculated from the employment service and the Department for Social Security.
 6. Data for "Other" Civil Service for Q1 2005 onwards are based on 2004 data. This data will be revised when more up to date data are available
- r. Figures have been revised since the previous publication. For more information see background note 17

5 (a) Employment (Permanent Staff Only): Scottish Executive and Associated Agencies; Full-time equivalent^{1,2,3}

		Scottish Executive Core Departments (excl Agencies)⁴	Scottish Prison Service	Crown Office and Procurator Fiscal	Other Scottish Agencies	Total
Q1	1999	3,700	4,800	1,100	4,000	13,600
Q2	1999	3,700	4,800	1,100	4,100	13,800
Q3	1999	3,700	4,700	1,100	4,100	13,900
Q4	1999	3,800	4,700	1,100	4,100	13,900
Q1	2000	3,800	4,600	1,100	4,100	13,800
Q2	2000	3,800	4,600	1,100	4,000	13,700
Q3	2000	3,900	4,500	1,100	4,000	13,600
Q4	2000	3,900	4,500	1,100	4,000	13,500
Q1	2001	4,000	4,400	1,200	4,000	13,600
Q2	2001	4,000	4,400	1,200	4,100	13,700
Q3	2001	4,100	4,500	1,200	4,200	13,900
Q4	2001	4,100	4,500	1,200	4,300	14,100
Q1	2002	4,200	4,500	1,200	4,400	14,300
Q2	2002	4,200	4,500	1,300	4,500	14,500
Q3	2002	4,300	4,500	1,300	4,500	14,600
Q4	2002	4,300	4,500	1,400	4,500	14,600
Q1	2003	4,300	4,500	1,400	4,600	14,700
Q2	2003	4,300	4,400	1,400	4,700	14,800
Q3	2003	4,400	4,300	1,400	4,800	14,900
Q4	2003	4,400	4,300	1,400	5,000	15,000
Q1	2004	4,400	4,200	1,400	5,200	15,200
Q2	2004	4,400	4,100	1,400	5,400	15,300
Q3	2004	4,400	4,200	1,300	5,400	15,300
Q4	2004	4,300	4,200	1,300	5,400	15,200
Q1	2005	4,500	4,100	1,300	5,500	15,400
Q2	2005	4,400	4,100	1,300	5,500	15,400
Q3	2005	4,500	4,100	1,400	5,600	15,500
Q4	2005	4,400	4,000	1,400	5,600	15,400
Q1	2006	4,300	3,900	1,400	5,800	15,400

Sources: Quarterly Public Employees Survey
Civil Service Statistics

Notes:

1. All Figures are rounded to the nearest hundred
2. Totals may not add to the sum of the parts due to rounding
3. Where quarterly data are not available the data are estimated from available data. More information can be found in background note 3
4. 1999 figures are for the Scottish Office.
- r. Figures have been revised since the previous publication. For more information see background note 17

5 (b) Employment (Permanent Staff Only): Other Civil Service in Scotland; Full-time equivalent^{1,2,3}

		Ministry of Defence	HM Revenue and Customs ⁴	Department for Work and Pensions ⁵	Department for International Development	Scotland Office	Other Civil Service ⁶	Total
Q1	1999	9,100	7,400	12,000	400	~	1,800	30,800
Q2	1999	9,100	7,300	12,200	400	~	1,600	30,900
Q3	1999	9,100	7,300	12,400	400	~	1,600	31,000
Q4	1999	9,000	7,300	12,500	400	~	1,600	31,100
Q1	2000	9,000	7,300	12,500	400	20	1,600	31,300
Q2	2000	9,100	7,300	12,600	400	30	1,600	31,500
Q3	2000	9,200	7,400	12,600	500	40	1,700	31,600
Q4	2000	9,200	7,400	12,700	500	50	1,700	31,800
Q1	2001	8,800	7,400	12,800	500	60	1,700	31,900
Q2	2001	8,700	7,400	13,000	500	70	1,700	32,000
Q3	2001	8,700	7,400	12,700	500	70	1,700	32,000
Q4	2001	8,700	7,500	13,400	500	70	1,700	31,900
Q1	2002	8,600	7,600	13,400	500	70	1,700	31,900
Q2	2002	8,700	7,900	14,000	500	70	1,800	31,800
Q3	2002	8,600	8,300	13,100	500	70	1,900	31,700
Q4	2002	7,200	8,700	13,000	500	70	2,000	31,700
Q1	2003	7,200	9,100	12,900	500	70	2,100	31,900
Q2	2003	7,100	9,400	13,900	500	70	2,200	32,200
Q3	2003	7,100	9,600	13,200	500	70	2,200	32,600
Q4	2003	7,100	9,700	13,500	500	60	2,200	33,100
Q1	2004	7,200	9,800	13,700	500	60	2,200	33,500
Q2	2004	7,100	9,700 ^f	13,600	500	60	2,200	33,100^f
Q3	2004	6,900	9,600 ^f	13,700	500	80	2,200	33,000^f
Q4	2004	6,900	9,500 ^f	13,400	500	70	2,200	32,500^f
Q1	2005	6,900	9,300 ^f	12,700	500	60	2,200	31,700^f
Q2	2005	6,900	9,400	12,400	500	60	2,200	31,500
Q3	2005	6,900	9,500	12,300	500	60	2,200	31,500
Q4	2005	6,800	9,500	12,200	500	60	2,200	31,300
Q1	2006	6,800	9,500	12,200	500	60	2,200	31,300

Sources: HM Revenues and Customs
Department for Work and Pensions
Department for International Development
Civil Service Statistics
Ministry of Defence

Notes:

1. All figures are rounded to the nearest hundred except for the Scotland Office figures which are rounded to the nearest ten.
 2. Totals may not add to the sum of the parts due to rounding.
 3. Where quarterly data are not available the data are estimated from available data. More information can be found in background note 3.
 4. Data prior to 2005 for HM Revenue and Customs are calculated from the Inland Revenue and HM Customs and Excise.
 5. Data prior to 2001 for the Department for Work and Pensions are calculated from the employment service and the Department for Social Security.
 6. Data for "Other" Civil Service for Q1 2005 onwards are based on 2004 data. This data will be revised when more up to date data are available.
- r. Figures have been revised since the previous publication. For more information see background note 17

6. Public Sector Employment by Local Government; Headcount^{1,2,3,4}

		Education		Social Work	Police and Related Services	Fire and Related Services	Other ⁶	Total Local Government excluding Police & Fire	Total Local Government
		Teachers	Other ⁵						
Q1 1999		60,500	35,400	47,700	20,400	5,600	123,800	267,400	293,400^f
Q2 1999		60,000	34,400	47,400	20,500	5,600	125,200	267,000	293,000
Q3 1999		59,500	34,900	50,100	20,100	5,600	123,000	267,400	293,100
Q4 1999		60,500	36,600	50,300	20,100	5,600	122,700	270,100	295,800
Q1 2000		61,000	37,600	50,100	20,000	5,700	122,100	270,800	296,500
Q2 2000		60,400	36,600	49,900	20,100	5,600	123,300	270,200	295,900
Q3 2000		59,900	36,500	49,600	20,200	5,600	122,300	268,300	294,200
Q4 2000		60,900	38,100	49,300	20,200	5,600	120,500	268,800	294,700
Q1 2001		61,000	39,400	49,500	20,500	5,600	119,900	269,900	296,000
Q2 2001		60,400	38,800	50,100	20,600	5,600	120,400	269,700	295,900
Q3 2001		60,000	39,600	50,100	20,600	5,700	120,300	270,000	296,400
Q4 2001		61,200	42,200	50,200	20,700	5,600	119,700	273,300	299,700
Q1 2002		61,600	43,600	50,200	20,900	5,500	119,100	274,500	301,000
Q2 2002		61,000	43,500	50,500	21,000	5,500	119,700	274,700	301,300
Q3 2002		60,400	42,600	51,700	21,100	5,500	120,300	274,900	301,600
Q4 2002		61,500	44,500	52,000	21,200	5,600	119,600	277,500	304,300
Q1 2003		61,900	45,700	53,100	22,100	5,500	117,600	278,200	305,800
Q2 2003		61,400	45,800	53,900	21,700	5,600	119,400	280,300	307,500
Q3 2003		59,900	45,200	54,400	21,700	5,600	119,900	279,400	306,700
Q4 2003		62,200	46,900	55,300	21,900	5,700	118,800	283,000	310,600
Q1 2004		62,700	48,400	56,000	22,400	5,700	118,700	285,600	313,700
Q2 2004		62,200	48,600	56,100	22,700	5,600	120,300	287,000	315,300
Q3 2004		61,900	47,800	56,500	22,700	5,700	120,800	286,800	315,100
Q4 2004		63,200	49,600	56,500	23,000	5,600	119,900	289,000	317,600
Q1 2005		63,800	49,900	57,000	23,300	5,700	118,500	289,000	318,000
Q2 2005		62,900	52,000	56,200	23,400 ^f	5,700	121,100	291,900	321,100
Q3 2005		63,200	50,800	56,600	23,700	5,700	121,200	291,700	321,100
Q4 2005		64,000 ^f	52,000 ^f	56,500 ^f	24,200 ^f	5,700	120,500 ^f	292,800 ^f	322,700^f
Q1 2006		64,600	53,100	56,500	24,200	5,800	120,300	294,400	324,400

Source: Joint Staffing Watch Survey

Notes:

1. All figures have been rounded to the nearest hundred
2. Totals may not add to the sum of the parts due to rounding
3. From Q1 2005, the Joint Staffing Watch Survey is collected by the Scottish Executive. This data was previously collected by COSLA in conjunction with the Scottish Executive.
4. Further breakdowns are available on request
5. Education 'Other' contains: Director of Education and support staff; other education department support staff; and staff providing educational support services; cultural and youth services staff; and school based administration
6. Other staff contains: corporate services; central support; planning and economic development; housing; roads and transport; arts, sports and leisure; libraries, museums and galleries; trading standards; staff of district court; environmental services; Direct Labour Organisation (DLO) staff and Direct Service Organisation (DSO) staff; National Parks staff
- r. Figures have been revised since previous publication. For more information see background note 17.

7. Public Sector Employment by Local Government; Full-time equivalent^{1,2,3,4}

		Education		Social Work	Police and Related Services	Fire and Related Services	Other ⁶	Total Local Government excluding Police & Fire	Total Local Government
		Teachers	Other ⁵						
Q1 1999		54,300	23,400	35,000	19,800	5,500	97,100	209,800	235,000
Q2 1999		53,800	23,200	34,800	19,800	5,500	98,100	210,100	235,400
Q3 1999		53,600	24,100	36,700	19,600	5,500	96,900	211,200	236,300
Q4 1999		54,300	25,000	36,700	19,600	5,500	96,100	212,000	237,100
Q1 2000		54,900	25,400	36,500	19,500	5,500 ^r	95,800	212,600	237,600^r
Q2 2000		54,300	25,300	36,600	19,500	5,500	96,600	212,800	237,900
Q3 2000		53,900	25,700	36,700	19,600	5,500	95,500	211,800	236,900
Q4 2000		54,500	26,300	36,600	19,700	5,500	94,100	211,500	236,700
Q1 2001		54,500	26,800	36,600	20,000	5,500	93,200	211,100	236,600
Q2 2001		54,200	27,000	37,000	20,000	5,500	94,700	212,900	238,400
Q3 2001		53,600	27,600	37,500	20,000	5,500	94,900	213,600	239,200
Q4 2001		54,300	28,800	37,800	20,100	5,500	93,900	214,700	240,300
Q1 2002		54,600	29,400	38,000	20,300	5,400	94,000	216,000	241,700
Q2 2002		54,300	29,200	38,400	20,400	5,400	95,400	217,200	242,900
Q3 2002		54,400	29,000	39,200	20,500	5,400	95,600	218,100	244,000
Q4 2002		54,900	29,800	39,900	20,600	5,400	94,400	218,900	244,900
Q1 2003		55,300	30,500	40,900	20,800	5,400	92,600	219,200	245,500
Q2 2003		54,800	30,900	41,600	21,000	5,500	94,300	221,400	247,900
Q3 2003		54,700	31,000	42,000	21,000	5,500	94,800	222,300	248,800
Q4 2003		55,600	31,900	42,800	21,100	5,500	94,600	224,800	251,400
Q1 2004		55,800	32,600	43,200	21,500	5,500	94,400	225,800	252,800
Q2 2004		55,600	32,900	43,300	21,800	5,500	95,800	227,500	254,800
Q3 2004		55,500	32,900	44,000	21,900	5,500	96,400	228,700	256,100
Q4 2004		56,100	33,900	44,200	22,300	5,500	95,200	229,200	256,900
Q1 2005		57,000	34,100	44,700	22,600	5,600	94,900	230,600	258,700
Q2 2005		56,200	35,800	44,200	22,700 ^r	5,500 ^r	96,100	232,100	260,300^r
Q3 2005		56,500	35,300	44,400	22,900	5,500	96,400	232,400	260,800^r
Q4 2005		57,000 ^r	35,600	44,500	23,300 ^r	5,600	96,000 ^r	233,000 ^r	261,900^r
Q1 2006		57,200	36,000	44,600	23,400	5,700	95,900	233,500	262,600

Source: Joint Staffing Watch Survey

Notes:

1. All figures have been rounded to the nearest hundred
2. Totals may not add to the sum of the parts due to rounding
3. From Q1 2005, the Joint Staffing Watch Survey is collected by the Scottish Executive. This data was previously collected by COSLA in conjunction with the Scottish Executive.
4. Further breakdowns are available on request
5. Education 'Other' contains: Director of Education and support staff; other education department support staff; and staff providing educational support services; cultural and youth services staff; and school based
6. Other staff contains: corporate services; central support; planning and economic development; housing; roads and transport; arts, sports and leisure; libraries, museums and galleries; trading standards; staff of district court; environmental services; Direct Labour Organisation (DLO) staff and Direct Service Organisation (DSO) staff; National Parks staff
- r. Figures have been revised since previous publication. For more information see background note 17.