

Index of Manufactured Exports Q2, 2009

Economy Series

A NATIONAL STATISTICS PUBLICATION FOR SCOTLAND

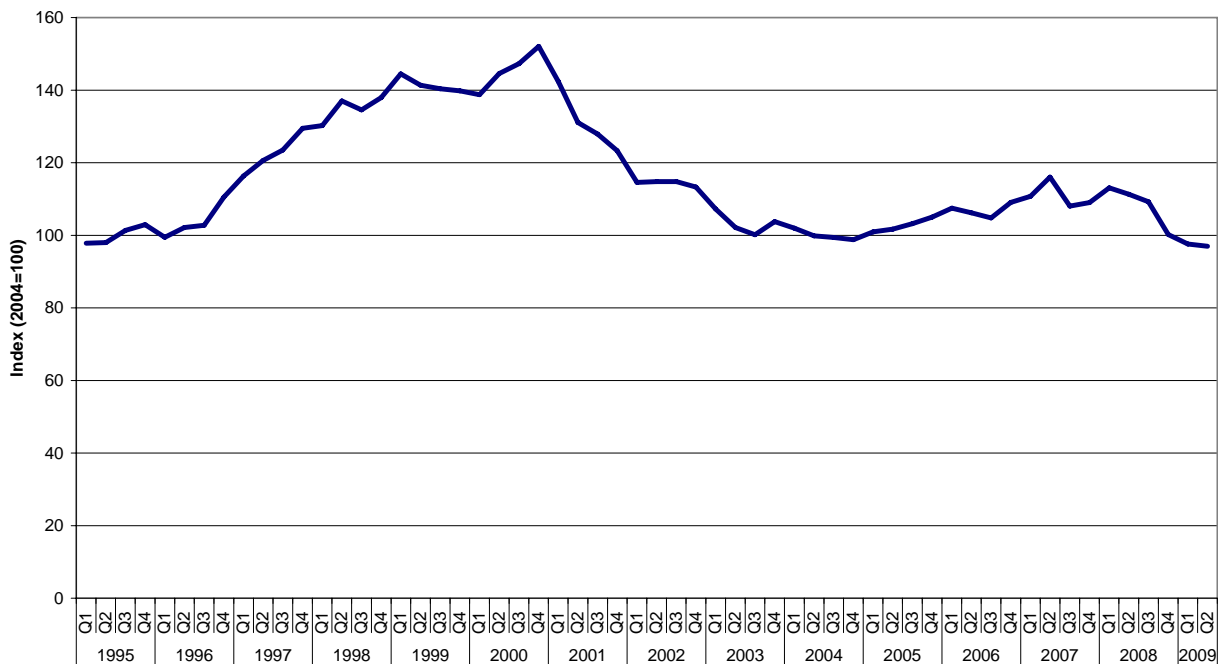
SCOTTISH MANUFACTURED EXPORTS ESTIMATES
FOR THE SECOND QUARTER OF 2009



7 October 2009

Scottish manufactured export sales fell by 0.7 per cent in real terms in the second quarter of 2009 and fell by 8.5 per cent over the year to the end of June 2009, according to estimates published today by Scotland's Chief Statistician.

Index of Scottish Manufactured Exports



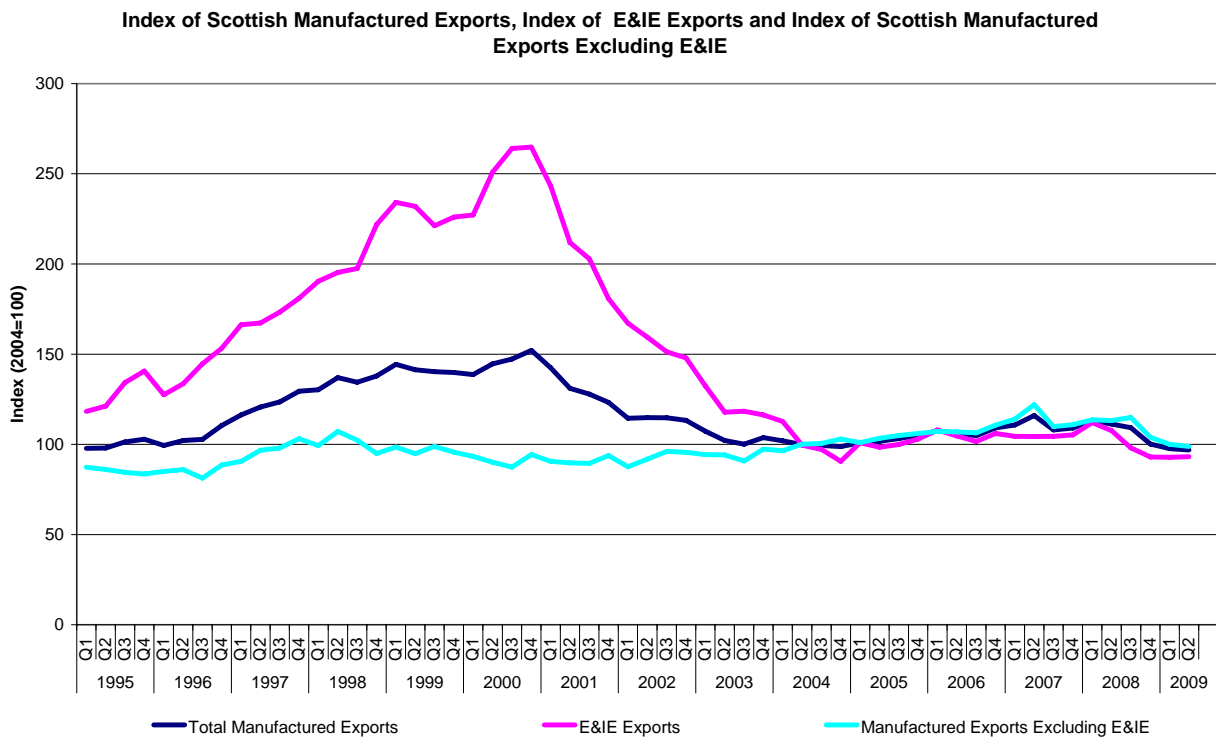
The main findings are:

- Scottish manufactured export sales decreased by 0.7 per cent in real terms in 2009 Q2 (seasonally adjusted). The level of Scottish manufactured export sales decreased by 8.5 per cent in real terms over the year to 2009 Q2.
- Over the quarter the greatest declines were observed in chemicals, coke, refined petroleum & nuclear fuel (-6.0%), wood, paper, publishing & printing (-12.0%), engineering & allied industries (-1.0%), metals & metal products (-5.9%), and textiles, fur & leather (-7.3%). In the same period, growth in exports were observed in the food, drink & tobacco industries (+5.5%), and other manufacturing (+0.9%).

- Over the year to June 2009 export sales fell in all industries including engineering & allied industries (-8.0%), food, drink & tobacco (-8.0%), metals & metal products (-20.7%), chemicals, coke, refined petroleum & nuclear fuel (-5.7%), textiles, fur & leather (-17.0%), wood, paper, publishing & printing (-11.3%), and other manufacturing (-2.4%).

Longer Term Trends

- Over 1995 Q1 to 2000 Q4 the index of manufactured exports exhibited a period of strong growth (1.9% average quarterly growth) which was followed by a sustained period of decline from 2000 Q4 to 2004 Q4 (2.7% average quarterly decline). Thereafter there was some evidence of modest trend growth in export sales until the start of 2008. Over the last five quarters the volume of export sales have declined, reaching their lowest level since 1995 this quarter.
- The growth and decline in manufactured exports over the period 1995-2004 is largely explained by the electrical and instrument engineering sector, which grew by 95.7 per cent between 1995 and 2000 and fell by 66.1 per cent between 2000 Q4 and 2004 Q4. This sector continues to exert heavy influence on the current changes in the volume of exports.



- At its peak in 2000 the electrical and instrument engineering sector accounted for 58 per cent of Scotland’s manufactured exports. This industry remains Scotland’s largest exporting sector and accounted for nearly 33 per cent of Scotland’s total manufactured exports in 2008.

BACKGROUND NOTES

Methodology

1. Estimates of Scottish manufactured exports are compiled on the standard industrial classification UKSIC(2003). Implemented on 1 January 2003, UKSIC(2003) is a minor revision to UKSIC(92), in line with the latest revision of the European Union classification system.
2. The estimates are derived from data on sales of goods produced by the Scottish manufacturing industry for export outwith the UK. The Office for National Statistics (ONS) collect the data used to produce these figures in their Monthly Production Inquiry. Export estimates for the refined petroleum products industry are calculated using a volume series supplied by the Department for Business, Enterprise and Regulatory Reform (BERR) and export ratios estimated using the Scottish Government's Global Connections Survey.
3. The main purpose of the Index is to identify volume changes over time. Accordingly, data are deflated to 2000 prices using UK export producer price indices, which are produced by the ONS. These constant (2000) price estimates provide a more appropriate measure for monitoring change over time as they have had the effect of price changes removed.
4. Deflated exports sales of the companies covered by the Inquiry are weighted to represent the entire population of each industry using the Inter Departmental Business Register.
5. Cross-referencing of company information from the Global Connections Survey (GCS) is carried out annually to enhance the level of consistency between individual company records held in both sources. GCS annual data are currently only available for calendar years 2002 - 2007, so rescaling of pre-2002 data takes place to ensure continuity.
6. The data have been seasonally adjusted where appropriate using the X-12-ARIMA technique. Further information is available in an article published in the 2006 edition of Scottish Economic Statistics. (<http://www.scotland.gov.uk/stats/ses/>).
7. In total, the Index is based on a sample of around 1,000 Scottish manufacturing companies per quarter. This sample covers all sizes of unit across the manufacturing sector.
8. Equivalent figures, on a cash basis, for Table 1 are available on the experimental SNAP website. These are presented in constant and current prices, and both seasonally adjusted and non- seasonally adjusted. These are available using the following link: <http://www.scotland.gov.uk/Topics/Statistics/Browse/Economy/SNAP>

The Global Connections Survey

9. The annual Global Connections Survey (GCS) provides a current price estimate, in monetary terms, of the value of exports sales for the economy as a whole; the only survey to do so. The Quarterly Index of Manufactured Exports provides a time series of growth in export sales, at constant prices, for the manufacturing industry. The annual estimate of total exports from Scotland derived from the Global Connections Survey indicates that the manufacturing sector accounted for £13.6 billion in 2007 - 66 per cent of all exports from Scotland.
10. Further information about the methodology of the Index of Manufactured Exports and the Global Connections Survey can be found on the website at: www.scotland.gov.uk/exports

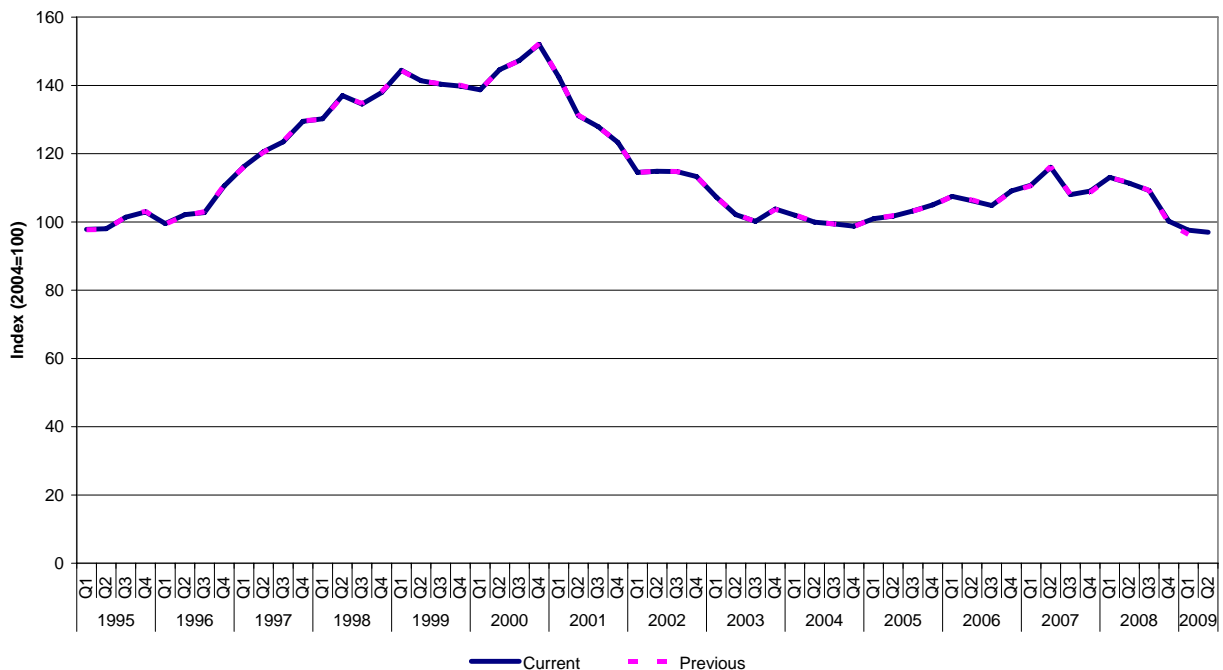
Volatility

11. Some of the indices for smaller industries can be particularly volatile when examined on a quarterly basis. In some cases, this is due to the nature of the industry (e.g. transport equipment); in others it can be due to the relatively small size of the industry in export terms (e.g. food & tobacco). For these reasons, care should be taken when drawing any firm conclusions from individual quarter results. Estimates of annual changes will be more robust than quarterly changes.

Revisions

12. It is the Scottish Government's policy to use all the data available at the time of publication to ensure that the best possible estimates are provided. This inevitably leads to revisions to previously published estimates. All quarters affected by data revisions are updated at the earliest possible opportunity. This allows those using the data for long-term analysis to have a long-term consistent series. We have a commitment to improve continually the quality of the index of manufactured exports, and part of this commitment involves an ongoing programme to develop the data sources and methodologies used in the compilation of the series.

Comparison of Current Index with Previously Published Estimates



13. The chart above shows a comparison of the overall Index this quarter and the index published in July 2009. Tables 3 and 4 provide detailed information of revisions at industry level. Quarterly revisions which balance out to zero over the year usually indicate that there has been a change to the seasonal pattern of the series rather than a revision to the data for any companies.

14. Revisions this quarter have resulted from revisions to information previously supplied by respondent companies, re-estimation of seasonal adjustment factors and alignment with the latest Global Connections Survey data. The series most affected are food, drink & tobacco, and textiles, fur & leather.

Future Revisions

15. There are no planned changes to the methodologies used in the production of the Index of Manufactured Exports next quarter.

National Statistics

16. National Statistics are produced to high professional standards set out in the National Statistics Code of Practice. They undergo regular quality assurance reviews to ensure that they meet customer needs. They are produced free from any political interference. Mercury and Profile users may obtain a copy of the Index tables by telephoning the number below or via the website www.scotland.gov.uk/exports

Issued by:

Office of the Chief Economic Adviser
Scottish Government
St Andrew's House
Regent Road
Edinburgh EH1 3DG

Telephone:

Communications Office:	Stewart Cooper	0131-244-5122
Assistant Statistician:	Glen Deakin	0131-244-2838

Table 1: Quarterly Index of Scottish Manufactured Exports, in Constant prices, by Industry

	2004=100							
	Total Manufacturing	Food, Drink & Tobacco	Textiles, Fur & Leather	Wood, Pulp, Paper, Publishing & Printing	Chemicals, Coke, Refined Petroleum Products & Nuclear Fuel	Metals & Metal Products	Engineering & Allied Industries	Other Manufacturing
SIC 2003	D	DA	DB, DC	DD, DE	DF, DG	DJ	DK, DL, DM	DH, DI, DN
2004 Weights ¹²	100.0%	24.1%	3.2%	3.9%	12.7%	3.4%	48.1%	4.3%
1995	100.0	78.0	94.4	91.1	67.3	90.6	119.8	125.4
1996	103.7	75.8	110.5	92.0	81.3	85.8	123.8	126.5
1997	122.5	99.6	135.5	89.1	81.9	88.3	149.4	125.0
1998	134.9	104.6	122.0	103.3	80.1	129.5	171.2	114.7
1999	141.5	90.9	120.8	106.1	83.8	124.4	190.9	115.1
2000	145.7	83.9	112.8	100.4	80.5	104.5	206.5	115.0
2001	131.2	83.4	105.0	97.9	94.3	99.3	173.7	114.1
2002	114.3	86.7	102.2	88.0	95.7	110.4	137.1	109.1
2003	103.3	86.6	89.7	90.7	99.2	105.0	114.9	100.6
2004	100.0	100.0	100.0	100.0	100.0	100.0	100.0	100.0
2005	102.7	110.2	91.9	102.1	100.0	98.6	101.3	97.7
2006	106.9	112.4	96.0	92.1	101.6	124.2	107.1	97.5
2007	111.0	116.0	94.7	111.7	98.4	140.1	112.4	93.5
2008	108.4	112.4	87.5	110.4	98.1	138.8	109.4	97.9
Seasonally Adjusted								
1995 Q1	97.8	77.5	96.6	89.8	71.0	100.2	112.9	134.9
Q2	98.0	78.1	92.1	91.7	68.2	94.9	114.8	127.9
Q3	101.3	76.9	94.3	88.9	65.2	79.3	125.3	118.0
Q4	102.9	79.6	94.5	93.9	64.7	88.0	126.1	120.8
1996 Q1	99.5	82.1	104.7	88.3	70.6	91.6	114.3	135.1
Q2	102.1	74.0	118.2	87.2	89.3	87.3	118.7	127.5
Q3	102.8	68.5	105.9	91.5	81.6	78.9	126.7	120.8
Q4	110.5	78.7	113.3	101.0	83.6	85.3	135.4	122.4
1997 Q1	116.3	88.6	123.5	80.5	76.0	72.5	145.9	129.8
Q2	120.6	101.2	131.3	82.0	76.7	81.7	146.3	139.8
Q3	123.5	103.4	144.1	93.8	88.3	95.8	147.3	114.1
Q4	129.5	105.3	143.1	100.0	86.7	103.3	158.2	116.4
1998 Q1	130.2	103.9	129.3	101.7	80.3	122.4	161.2	121.2
Q2	137.0	107.8	116.4	107.0	88.4	124.4	171.6	119.5
Q3	134.5	105.7	122.0	104.2	80.2	124.8	170.5	109.3
Q4	137.9	100.9	120.2	100.3	71.5	146.4	181.4	109.0
1999 Q1	144.5	96.1	124.4	94.6	80.4	134.3	195.3	117.0
Q2	141.3	91.3	124.6	110.9	80.6	127.4	190.7	111.4
Q3	140.3	89.9	118.0	112.8	90.0	120.6	187.0	117.3
Q4	139.8	86.3	116.3	106.0	84.1	115.2	190.6	114.5
2000 Q1	138.7	86.6	114.3	107.3	80.6	110.7	190.0	109.3
Q2	144.6	79.9	113.1	110.6	79.0	105.4	206.2	110.0
Q3	147.3	78.6	110.0	89.2	78.7	103.2	213.6	121.0
Q4	152.0	90.4	113.8	94.6	83.6	98.5	216.1	119.8
2001 Q1	142.4	79.7	112.5	103.7	92.8	107.5	197.4	120.6
Q2	131.1	78.1	97.1	101.3	92.8	97.2	176.4	121.0
Q3	127.9	83.8	101.8	96.3	92.1	91.0	168.6	109.3
Q4	123.3	91.9	108.6	90.4	99.4	101.5	152.5	105.4
2002 Q1	114.5	75.8	103.8	88.4	98.4	107.7	142.1	111.0
Q2	114.8	87.2	102.4	82.5	93.2	109.2	138.9	110.7
Q3	114.8	93.3	102.8	92.9	97.6	106.8	134.2	107.1
Q4	113.3	90.5	99.9	88.3	93.6	118.1	133.4	107.7
2003 Q1	107.3	89.7	87.5	83.6	97.9	123.0	120.6	109.2
Q2	102.1	85.0	83.9	86.3	98.5	109.6	113.6	103.8
Q3	100.1	83.8	95.8	98.0	95.9	96.0	110.7	94.7
Q4	103.8	88.1	91.5	94.8	104.6	91.6	114.6	94.5
2004 Q1	102.0	95.9	101.5	97.0	94.7	98.8	107.7	102.2
Q2	99.9	101.6	98.4	93.5	100.7	105.8	98.8	101.5
Q3	99.4	100.1	97.3	102.0	103.0	100.5	97.9	98.9
Q4	98.8	102.3	102.8	107.5	101.6	94.9	95.6	97.3
2005 Q1	101.0	106.2	93.4	97.0	97.7	92.2	100.6	102.1
Q2	101.7	111.8	88.2	105.7	93.8	95.2	99.9	101.3
Q3	103.2	113.1	93.1	104.8	101.7	97.7	100.8	89.8
Q4	105.0	109.6	92.8	100.9	106.8	109.2	103.7	97.4
2006 Q1	107.5	110.3	96.1	87.6	104.6	116.7	108.9	103.9
Q2	106.2	112.6	102.0	93.6	99.6	121.4	105.3	103.4
Q3	104.8	106.5	102.1	91.9	103.7	128.3	104.9	91.9
Q4	109.1	120.3	84.0	95.2	98.4	130.1	109.4	90.9
2007 Q1	110.8	121.7	101.4	110.8	101.1	129.9	108.6	96.5
Q2	116.0	108.6	96.4	109.1	100.2	136.6	126.2	98.3
Q3	108.0	118.3	91.9	112.6	89.6	139.7	108.3	87.4
Q4	109.0	115.6	89.1	114.5	102.8	154.1	106.7	91.7
2008 Q1	113.1	119.6	93.9	111.3	100.0	150.7	113.9	94.2
Q2	111.3	113.4	88.1	114.5	94.4	148.9	114.4	102.9
Q3	109.2	118.5	86.4	109.3	105.4	135.1	106.2	98.7
Q4	100.2	98.1	81.6	106.5	92.5	120.4	103.1	95.9
2009 Q1	97.6	103.6	69.2	98.8	86.0	110.7	99.7	85.9
Q2	96.9	109.3	64.2	87.0	80.8	104.2	98.7	86.7
% Growth, latest Q on previous Q	-0.7%	5.5%	-7.3%	-12.0%	-6.0%	-5.9%	-1.0%	0.9%
% Growth, latest 4Qs on previous 4Qs	-8.5%	-8.0%	-17.0%	-11.3%	-5.7%	-20.7%	-8.0%	-2.4%

¹ Weights vary on a quarterly basis - base year weights are shown here as an illustration of relative industry importance.² Components may not sum to totals due to rounding.

Table 2: Quarterly Index of Scottish Manufactured Exports, in Constant prices, Detailed Industries

SIC 2003	2004=100				
	Food & Tobacco	Drink	Mechanical Engineering	Electrical & Instrument Engineering	Transport Equipment
	DA 15.1-15.8 & DA 16	DA 15.9	DK	DL	DM
2004 Weights¹²³	3.4%	20.7%	7.1%	33.9%	7.1%
1995	100.8	74.3	135.4	128.6	62.2
1996	80.6	75.0	114.2	139.8	57.0
1997	86.0	101.9	114.0	172.0	77.1
1998	84.0	108.0	106.2	201.3	92.4
1999	88.0	91.4	107.1	228.3	95.7
2000	97.4	81.6	106.6	251.7	89.9
2001	88.4	82.5	102.3	209.7	73.1
2002	83.5	87.2	101.2	156.4	80.8
2003	87.4	86.5	107.6	121.2	91.8
2004	100.0	100.0	100.0	100.0	100.0
2005	104.9	111.0	106.4	100.5	99.7
2006	91.9	115.8	111.6	105.1	112.6
2007	85.7	121.0	-	104.6	-
2008	78.2	118.0	144.7	102.7	106.3
Seasonally Adjusted					
1995 Q1	99.7	73.8	139.7	118.3	60.2
Q2	114.4	72.2	130.7	121.3	66.3
Q3	93.3	74.2	136.5	134.2	72.0
Q4	95.7	76.9	134.7	140.6	48.3
1996 Q1	92.0	80.5	113.9	127.5	51.5
Q2	84.9	72.2	106.1	133.7	60.2
Q3	74.4	67.5	110.8	144.6	57.0
Q4	71.3	79.9	126.2	153.3	59.3
1997 Q1	78.6	90.2	115.8	166.3	78.6
Q2	82.4	104.3	121.7	167.3	70.3
Q3	92.4	105.3	109.8	173.3	60.6
Q4	90.7	107.6	108.6	181.0	98.8
1998 Q1	78.3	108.1	97.9	190.5	84.8
Q2	80.3	112.4	105.0	195.3	124.8
Q3	88.0	108.6	120.3	197.5	91.9
Q4	89.6	102.8	101.7	221.8	68.1
1999 Q1	86.3	97.7	103.6	234.1	101.1
Q2	95.8	90.6	100.1	232.0	84.0
Q3	89.4	89.9	113.1	221.2	97.1
Q4	80.6	87.2	111.4	226.0	100.5
2000 Q1	103.4	83.8	106.7	227.2	95.0
Q2	90.7	78.2	103.6	251.0	94.6
Q3	89.2	76.8	118.1	264.0	68.4
Q4	106.3	87.7	98.0	264.7	101.8
2001 Q1	117.8	73.4	108.2	243.4	66.5
Q2	84.1	77.1	106.5	211.9	76.6
Q3	73.6	85.5	106.4	202.9	66.9
Q4	78.2	94.1	87.9	180.7	82.2
2002 Q1	78.8	75.3	99.9	167.1	64.5
Q2	81.1	88.2	98.7	159.4	81.2
Q3	93.1	93.3	98.1	151.2	88.7
Q4	81.1	92.0	108.1	148.0	88.8
2003 Q1	82.8	90.8	105.4	132.4	79.2
Q2	87.1	84.6	113.6	117.8	93.4
Q3	86.9	83.3	114.4	118.4	70.4
Q4	92.6	87.3	96.8	116.3	124.0
2004 Q1	93.3	96.4	97.9	112.7	93.4
Q2	96.3	102.5	99.1	99.5	95.2
Q3	106.2	99.1	97.3	97.1	102.1
Q4	104.1	102.0	105.7	90.7	109.3
2005 Q1	112.7	105.1	99.0	100.9	100.9
Q2	101.2	113.5	105.7	98.4	101.8
Q3	99.0	115.4	110.7	99.8	95.5
Q4	106.6	110.0	110.1	103.0	100.8
2006 Q1	98.2	112.2	112.4	108.0	109.7
Q2	93.4	115.7	105.0	104.6	109.0
Q3	90.1	109.1	113.0	101.5	113.1
Q4	85.9	125.9	116.1	106.1	118.5
2007 Q1	98.7	125.5	120.7	104.5	116.1
Q2	84.4	112.6	-	104.3	-
Q3	79.4	124.7	134.4	104.5	100.8
Q4	80.4	121.3	122.6	105.3	97.4
2008 Q1	86.7	124.9	149.2	112.1	87.3
Q2	83.4	118.3	154.4	107.6	106.9
Q3	77.4	125.2	138.5	98.1	113.1
Q4	65.1	103.5	136.5	93.0	117.7
2009 Q1	63.4	110.2	138.1	92.8	94.6
Q2	61.2	117.2	135.1	93.1	88.8
% Growth, latest Q on previous Q					
	-3.4%	6.4%	-2.1%	0.4%	-6.2%
% Growth, latest 4Qs on previous 4Qs					
	-19.0%	-6.8%	-2.2%	-12.2%	5.6%

¹ Weights vary on a quarterly basis - base year weights are shown here as an illustration of relative industry importance.

² Components may not sum to totals due to rounding.

³ Components do not sum to 100% as not all industries are included in this table.

To avoid the disclosure of company level information, the indices for the mechanical engineering and transport equipment industries have been suppressed for 2007Q2.

Table 3: Revisions to data published on 1 April 2009 (Table 1)

2004=100

SIC 2003	Total Manufacturing	Food, Drink & Tobacco	Textiles, Fur & Leather	Wood, Pulp, Paper, Publishing & Printing	Chemicals, Coke, Refined Petroleum Products & Nuclear Fuel	Metals & Metal Products	Engineering & Allied Industries	Other Manufacturing
	D	DA	DB, DC	DD, DE	DF, DG	DJ	DK, DL, DM	DH, DI, DN
2004 Weights ¹	100.0%	24.1%	3.2%	3.9%	12.7%	3.4%	48.1%	4.3%
1995	-	-	-	-	-	-	-	-
1996	-	-	-	-	-	-	-	-
1997	-	-	-	-	-	-	-	-
1998	-	-	-	-	-	-	-	-
1999	-	-	-	-	-	-	-	-
2000	-	-	-	-	-	-	-	-
2001	-	-	-	-	-	-	-	-
2002	-	-	-	-	-	-	-	-
2003	-	-	-	-	-	-	-	-
2004	-	-	-	-	-	-	-	-
2005	-	-	-	-	-	-	-	-
2006	-	-	-	-	-	-	-	-
2007	0	-	-	-	-	-	-	-
2008	0	-	-	-	-	1	-	-
Seasonally Adjusted								
1995 Q1	-	-	-	-	-	-	-	-
1995 Q2	-	-	-	-	-	-	-	-
1995 Q3	-	-	-	-	-	-	-	-
1995 Q4	-	-	-	-	-	-	-	-
1996 Q1	-	-	-	-	-	-	-	-
1996 Q2	-	-	-	-	-	-	-	-
1996 Q3	-	-	-	-	-	-	-	-
1996 Q4	-	-	-	-	-	-	-	-
1997 Q1	-	-	-	-	-	-	-	-
1997 Q2	-	-	-	-	-	-	-	-
1997 Q3	-	-	-	-	-	-	-	-
1997 Q4	-	-	-	-	-	-	-	-
1998 Q1	-	-	-	-	-	-	-	-
1998 Q2	-	-	-	-	-	-	-	-
1998 Q3	-	-	-	-	-	-	-	-
1998 Q4	-	-	-	-	-	-	-	-
1999 Q1	-	-	-	-	-	-	-	-
1999 Q2	-	-	-	-	-	-	-	-
1999 Q3	-	-	-	-	-	-	-	-
1999 Q4	-	-	-	-	-	-	-	-
2000 Q1	-	-	-	-	-	-	-	-
2000 Q2	-	-	-	-	-	-	-	-
2000 Q3	-	-	-	-	-	-	-	-
2000 Q4	-	-	-	-	-	-	-	-
2001 Q1	-	-	-	-	-	-	-	-
2001 Q2	-	-	-	-	-	-	-	-
2001 Q3	-	-	-	-	-	-	-	-
2001 Q4	-	-	-	-	-	-	-	-
2002 Q1	-	-	-	-	-	-	-	-
2002 Q2	-	-	-	-	-	-	-	-
2002 Q3	-	-	-	-	-	-	-	-
2002 Q4	-	-	-	-	-	-	-	-
2003 Q1	-	-	-	-	-	-	-	-
2003 Q2	-	-	-	-	-	-	-	-
2003 Q3	-	-	-	-	-	-	-	-
2003 Q4	-	-	-	-	-	-	-	-
2004 Q1	-	-	-	-	-	-	-	-
2004 Q2	-	-	-	-	-	-	-	-
2004 Q3	-	-	-	-	-	-	-	-
2004 Q4	-	-	-	-	-	-	-	-
2005 Q1	-	-	-1	-	-	-	-	-
2005 Q2	-	-	-	-	-	-	-	-
2005 Q3	-	-	-	-	-	-	-	-
2005 Q4	-	-	-	-	-	-	-	-
2006 Q1	-	-	-1	-	-	-	-	-
2006 Q2	-	-1	1	-	-	-	-	-
2006 Q3	-	-	-	-	-	-	-	-
2006 Q4	-	-	-	-	-	-	1	-
2007 Q1	-	1	-2	-	-	-1	-	-
2007 Q2	-	-	1	-	-	-	-	-
2007 Q3	-	1	-	-	-	1	-	-
2007 Q4	-	-	-	-	-	-1	1	-
2008 Q1	-	-	-2	-	-	-2	-	-
2008 Q2	-	-1	2	-	-	1	-	-
2008 Q3	-	-	-	-	-	2	-	-
2008 Q4	1	1	-	-	-	2	1	-
2009 Q1	1	1	-2	-	-1	-	3	-

¹Weights vary on a quarterly basis - base year weights are shown here as an illustration of relative industry importance.

Table 4: Revisions to data published on 1 April 2009 (Table 2)

2004=100

	Food & Tobacco	Drink	Mechanical Engineering	Electrical & Instrument Engineering	Transport Equipment
SIC 2003	DA 15.1-15.8 & DA 16	DA 15.9	DK	DL	DM
2004 Weights¹	3.4%	20.7%	7.1%	33.9%	7.1%
1995	-	-	-	-	-
1996	-	-	-	-	-
1997	-	-	-	-	-
1998	-	-	-	-	-
1999	-	-	-	-	-
2000	-	-	-	-	-
2001	-	-	-	-	-
2002	-	-	-	-	-
2003	-	-	-	-	-
2004	-	-	-	-	-
2005	-	-	-	-	-
2006	-	-	-	-	-
2007	-5	-	-	-	-
2008	1	-	-	-	-
Seasonally Adjusted					
1995 Q1	-	-	-	-	-
Q2	-	-	-	1	-
Q3	-	-	-	-	-
Q4	-	-	-	-1	-
1996 Q1	-	-	-	1	-
Q2	-	-	-	1	-
Q3	-	-	-	-1	-
Q4	-	-	-	-1	-
1997 Q1	-	-	-	1	-
Q2	-	-	-	1	-
Q3	-	-	-	-1	-
Q4	-	-	-	-1	-
1998 Q1	-	-	-	1	-
Q2	-	-	-	1	-
Q3	-	-	-	-1	-
Q4	-	-	-	-1	-
1999 Q1	-	-	-	1	-
Q2	-	-	-	-	-
Q3	-	-	-	-	-
Q4	-	-	-	-1	-
2000 Q1	-	-	-	-	-
Q2	-	-	-	-	-
Q3	-	-	-	-	-
Q4	-	-	-	-	-
2001 Q1	-	-	1	-	-
Q2	-	-	-	-	-
Q3	-	-	-	-	-
Q4	-	-	-	-	-
2002 Q1	-	-	-	-	-
Q2	-	-	-	-	-
Q3	-	-	-	-	-
Q4	-	-	-	-	-
2003 Q1	-	-	-	-	-
Q2	-	-	-	-	-
Q3	-	-	-	-	-
Q4	-	-	-	-	-
2004 Q1	-1	-	-	-	-
Q2	-	-	-	-	-
Q3	-	-	-	-	-
Q4	1	-	-	-	-1
2005 Q1	-2	-	-	-	-
Q2	-	-	-	-	-
Q3	1	-	-	-	-
Q4	1	-	-	1	-1
2006 Q1	-3	-	-	-	-
Q2	1	-1	-	-1	1
Q3	2	-	-	-1	1
Q4	-	-	-	1	-1
2007 Q1	2	1	-	-	-
Q2	4	-1	*	-1	*
Q3	5	-	1	-1	-
Q4	1	-	-1	1	-1
2008 Q1	-4	1	-1	1	-
Q2	3	-1	-	-1	1
Q3	4	-	1	-1	-
Q4	2	-	-1	2	-1
2009 Q1	1	1	1	4	-4

¹Weights vary on a quarterly basis - base year weights are shown here as an illustration of relative industry importance.

Table 5: Percentage of Total Manufactured Exports Contributed by Each Industry, in Constant 2000 Prices¹

SIC 2003	Total Manufacturing	Food, Drink & Tobacco			Textiles, Fur & Leather	Wood, Pulp, Paper, Publishing	Chemicals, Coke, Refined Petroleum Products & Products	Metals & Metal	Engineering & Allied Industries				Other Manufacturing
		Total	Food & Tobacco						Mechanical Engineering	Electrical & Instrument Engineering		Transport Equipment	
			DA	DA 15.1-15.8 & DA 16						DA 15.9	DK, DL, DM		
D	DA	DA 15.1-15.8 & DA 16	DA 15.9	DB, DC	DD, DE	DF, DG	DJ	DK, DL, DM	DK	DL	DM	DH, DI, DN	
1995	100.0	18.8	3.4	15.4	3.0	3.6	8.5	3.1	57.6	9.6	43.6	4.4	5.4
1996	100.0	17.6	2.6	15.0	3.4	3.5	9.9	2.8	57.4	7.8	45.7	3.9	5.2
1997	100.0	19.6	2.4	17.2	3.5	2.9	8.5	2.5	58.6	6.6	47.6	4.5	4.4
1998	100.0	18.7	2.1	16.6	2.9	3.0	7.5	3.3	61.0	5.6	50.5	4.9	3.6
1999	100.0	15.5	2.1	13.4	2.7	2.9	7.5	3.0	64.8	5.4	54.7	4.8	3.5
2000	100.0	13.9	2.3	11.6	2.4	2.7	7.0	2.5	68.1	5.2	58.6	4.4	3.4
2001	100.0	15.3	2.3	13.0	2.5	2.9	9.1	2.6	63.7	5.5	54.2	4.0	3.7
2002	100.0	18.3	2.5	15.8	2.8	3.0	10.6	3.3	57.6	6.3	46.3	5.0	4.1
2003	100.0	20.2	2.9	17.3	2.7	3.4	12.2	3.5	53.4	7.4	39.7	6.3	4.2
2004	100.0	24.1	3.4	20.7	3.2	3.9	12.7	3.4	48.1	7.1	33.9	7.1	4.3
2005	100.0	25.8	3.5	22.4	2.8	3.9	12.4	3.3	47.4	7.3	33.2	6.9	4.1
2006	100.0	25.3	2.9	22.4	2.8	3.4	12.1	4.0	48.2	7.4	33.3	7.5	3.9
2007	100.0	25.2	2.6	22.6	2.7	3.9	11.3	4.3	48.7	*	31.9	*	3.6
2008	100.0	25.0	2.4	22.5	2.5	4.0	11.5	4.4	48.5	9.5	32.1	7.0	3.9

¹ Components may not sum due to rounding

A NATIONAL STATISTICS PUBLICATION FOR SCOTLAND

Official and National Statistics are produced to high professional standards set out in the Code of Practice for Official Statistics at <http://www.statisticsauthority.gov.uk/assessment/code-of-practice/code-of-practice-for-official-statistics.pdf>. Both undergo regular quality assurance reviews to ensure that they meet customer needs and are produced free from any political interference.

Statistics assessed, or subject to assessment, by the UK Statistics Authority carry the National Statistics label, a stamp of assurance that the statistics have been produced and explained to high standards and that they serve the public good.

Further information about Official and National Statistics can be found on the UK Statistics Authority website at www.statisticsauthority.gov.uk

SCOTTISH GOVERNMENT STATISTICIAN GROUP

Our Aim

To provide relevant and reliable information, analysis and advice that meet the needs of government, business and the people of Scotland.

For more information on the Statistician Group, please see the Scottish Government website at www.scotland.gov.uk/statistics

Correspondence and enquiries

Enquiries on this publication should be addressed to:

Glen Deakin
Office of the Chief Economic Adviser
4ER
St. Andrew's House
Edinburgh EH1 3DG
Telephone: 0131 244 2838;
Fax: 0131 244 2824
e-mail: export.statistics@scotland.gsi.gov.uk

General enquiries on Scottish Government statistics can be addressed to:

Office of the Chief Statistician
Scottish Government
1N.04, St Andrews House
EDINBURGH EH1 3DG
Telephone: (0131) 244 0442
e-mail: statistics.enquiries@scotland.gsi.gov.uk

Further contact details, e-mail addresses and details of previous and forthcoming publications can be found on the Scottish Government Website at www.scotland.gov.uk/statistics

Complaints and suggestions

If you are not satisfied with our service, please write to the Chief Statistician, Mr Rob Wishart, 1N.04, St Andrews House, Edinburgh, EH1 3DG, Telephone: (0131) 244 0302, e-mail rob.wishart@scotland.gsi.gov.uk. We also welcome any comments or suggestions that would help us to improve our standards of service.

ScotStat

If you would like to be consulted about new or existing statistical collections or receive notification of forthcoming statistical publications, please register your interest on the Scottish Government ScotStat website at www.scotland.gov.uk/scotstat

Additional copies of these publications may be purchased from Scottish Government Publication Sales, Blackwell's Bookshop, 53 South Bridge, Edinburgh, EH1 1YS, Telephone: 0131 622 8283 or 0131 622 8258, Fax: 0131 557 8149. Cheques should be made payable to 'Blackwell's Bookshop'.

Crown Copyright

Brief extracts from the Crown Copyright material in this publication may be reproduced provided the source is fully acknowledged.