

FINAL RESULTS OF THE JUNE 2008 AGRICULTURAL CENSUS

Notes:

1. All figures have been rounded to the nearest 10. The sum of individual items may not, therefore, equal totals.
2. Percent figures have been rounded to the nearest 0.1%. 0.0% represents a change of less than 0.1%.
3. Following a reclassification exercise all results are published on a Main and Minor holding basis. The June 2008 final figures contain an estimate for minor holdings based on June 2007 figures.
4. Results incorporating data from the June 2008 survey of minor holdings will be published in the Abstract of Scottish Agricultural Statistics in Spring 2009.

Further information and other agricultural statistics can be obtained from:

Agricultural Census Branch,
The Scottish Government Rural and Environment Research and Analysis Directorate,
1A West, Pentland House,
47 Robb's Loan,
EDINBURGH
EH14 1TY

E-mail: agric.stats@scotland.gsi.gov.uk Phone: 0131 244 5239 Fax: 0131 244 3065

A NATIONAL STATISTICS PUBLICATION FOR SCOTLAND

FINAL RESULTS OF THE JUNE 2008 AGRICULTURAL CENSUS
TOGETHER WITH FINAL JUNE RESULTS FOR THE YEARS 1998 TO 2007 FOR COMPARISON

Table 1. Agricultural area in hectares, 1998 to 2008

	1998	1999	2000	2001	2002	2003	2004	2005	2006	2007	2008 ⁽⁴⁾	Percentage change between 2007 & 2008
Cereals												
Wheat	111,250	84,540	108,880	79,710	97,190	87,500	101,130	95,600	99,680	102,740	113,650	10.6%
Triticale	1,670	1,500	1,540	1,500	1,260	1,310	1,270	1,140	1,290	1,240	1,100	-11.4%
Barley - winter	77,850	58,580	61,760	55,420	61,230	55,650	56,350	51,340	53,760	52,630	57,520	9.3%
Barley - spring	256,370	281,100	255,230	281,380	263,910	264,920	257,460	243,300	220,640	226,020	261,890	15.9%
Oats - winter	7,730	5,630	6,760	4,160	5,430	6,030	6,150	4,980	6,620	7,230	6,510	-9.9%
Oats - spring	14,330	16,920	15,420	17,420	16,480	16,310	15,680	14,970	16,060	13,630	15,160	11.2%
Mixed grain	440	520	450	530	420	450	320	440	460	400	240	-41.2%
Total	469,640	448,770	450,050	440,130	445,930	432,160	438,360	411,770	398,510	403,900	456,060	12.9%
Oilseed rape												
Winter	42,040	37,710	28,200	27,220	26,430	29,880	34,180	32,270	30,980	34,280	31,570	-7.9%
Spring	23,140	13,520	8,240	7,640	4,470	5,280	5,140	3,320	2,760	2,060	2,000	-3.0%
Total	65,170	51,230	36,440	34,860	30,900	35,160	39,320	35,590	33,740	36,330	33,560	-7.6%
Peas for combining	2,100	1,810	1,640	1,910	1,450	1,670	1,580	1,390	1,490	1,790	1,480	-17.3%
Beans for combining	510	680	1,140	2,130	2,120	1,900	2,800	3,440	4,530	3,510	3,170	-9.6%
Linseed	1,390	4,770	2,540	1,500	860	820⁽³⁾	630	410	310	240	180	-24.8%
Total combine harvested crops	538,810	507,270	491,800	480,520	481,260	471,720	482,690	452,610	438,590	445,770	494,460	10.9%
Potatoes												
Seed	14,110	14,480	14,280	13,150	13,790	12,230	11,860	11,130	11,440	11,450	11,720	2.4%
Ware - harvest by 31 July	700	690	770	1,040	950	1,180	930	910	830	800	840	5.3%
Ware - harvest after 31 July	14,160	14,690	14,770	15,460	15,470	14,820	16,330	15,800	15,880	17,070	17,200	0.8%
Total	28,960	29,850	29,810	29,660	30,200	28,230	29,120	27,830	28,150	29,320	29,760	1.5%
Crops for stockfeeding												
Turnips/swedes	13,430	12,300	11,330	10,150	9,070	8,680	8,360	7,560	7,310	6,490	5,550	-14.4%
Kale/cabbage	3,090	2,810	2,590	2,530	2,240	2,170	2,180	2,510	3,020	2,890	2,790	-3.5%
Rape	4,030	3,510	3,320	3,250	2,940	2,860	3,010	3,140	3,190	2,940	2,730	-7.1%
Fodder beet	520	480	480	450	400	370	400	340	350	420	580	38.4%
Lupins ⁽¹⁾	n/a	n/a	n/a	n/a	n/a	790	690	780	580	410	400	-2.9%
Other crops ⁽²⁾	4,350	5,550	6,550	8,000	9,230	9,920	10,520	10,950	11,680	11,580	10,610	-8.4%
Total	25,420	24,660	24,260	24,370	23,880	24,790	25,180	25,270	26,140	24,720	22,660	-8.4%
Vegetables for human consumption	11,300	10,370	10,780	10,600	10,110	10,590	10,680	10,570	11,310	11,780	12,230	3.8%
Orchard fruit	50	40	50	50	50	40	40	50	40	50	50	6.7%
Soft fruit	2,250	2,130	1,970	1,830	1,740	1,650	1,700	1,680	1,710	1,790	1,860	4.0%
Other crops	3,090	3,300	4,080	4,020	4,780	4,810	5,770	6,900	9,150	9,730	8,290	-14.8%
Fallow	6,810	7,030	10,990	11,340	12,080	8,070	8,510	19,210	17,720	15,090	14,300	-5.2%
Set-aside	43,420	70,870	77,930	90,060	85,580	90,680	75,120	69,490	67,550	62,430	17,920	-71.3%
Total crops, fallow, and set-aside	660,120	655,540	651,690	652,450	649,690	640,590	638,800	613,610	600,350	600,670	601,510	0.1%
Grass												
Grass for mowing - under 5 years	168,890	165,270	164,590	164,900	164,240	161,410	164,870	161,270	161,400	160,620	150,420	-6.3%
Grass for mowing - 5th year & over	148,900	154,560	157,900	159,640	160,870	158,870	157,140	155,740	155,490	156,870	153,600	-2.1%
Grass for grazing - under 5 years	161,280	158,390	156,640	156,890	157,370	157,740	157,180	163,170	160,080	155,410	150,030	-3.5%
Grass for grazing - 5th year & over	673,600	698,090	707,740	735,190	768,960	774,630	745,260	754,560	766,610	762,250	764,120	0.2%
Total grass	1,152,670	1,176,300	1,186,870	1,216,630	1,251,430	1,252,650	1,224,450	1,234,730	1,243,580	1,235,150	1,218,170	-1.4%
Total area of crops and grass	1,812,800	1,831,840	1,838,560	1,869,080	1,901,120	1,893,250	1,863,250	1,848,340	1,843,930	1,835,820	1,819,680	-0.9%
Rough grazing	3,470,780	3,428,770	3,399,770	3,375,840	3,359,710	3,313,490	3,329,490	3,342,320	3,441,130	3,407,190	3,431,930	0.7%
Woodland	185,480	197,180	200,600	202,850	209,870	236,640	238,960	238,020	249,290	279,850	311,440	11.3%
Other land	60,270	58,820	61,390	64,910	64,850	74,240	80,680	80,600	80,400	74,520	75,420	1.2%
Total agricultural area	5,529,320	5,516,610	5,500,320	5,512,690	5,535,550	5,517,610	5,512,370	5,509,280	5,614,750	5,597,390	5,638,470	0.7%

⁽¹⁾ Lupins are not available before 2003.

⁽²⁾ Maize is included within 'Crops for stockfeeding - other crops'.

⁽³⁾ The 2003 figure for linseed also includes flax, which was collected separately for 2003 only.

⁽⁴⁾ Estimates of Cereal areas have increased by 8 thousand hectare since the publication of provisional results.

Additional quality assurance of data has identified some Cereal crops grown on land attracting set-aside entitlements, which had not been previously included in Cereal totals.

Conversely, the set-aside estimate has decreased by 5 thousand hectares. The set-aside estimate is still likely to include some crops, especially forage crops.

FINAL RESULTS OF THE JUNE 2008 AGRICULTURAL CENSUS
TOGETHER WITH FINAL JUNE RESULTS FOR THE YEARS 1998 TO 2007 FOR COMPARISON

Table 2. Area (in hectares) of vegetables for human consumption, bulbs & soft fruit, 1998 to 2008

	1998	1999	2000	2001	2002	2003	2004	2005	2006	2007	2008	Percentage change between 2007 & 2008
Vegetables for human consumption												
Peas for canning, freezing or drying	3,930	2,880	3,700	3,250	3,200	3,310	3,400	3,170	3,840	3,790	4,480	18.1%
Beans for canning, freezing or drying	440	240	410	430	640	810	540	280	300	370	420	13.9%
Turnips/swedes	1,990	2,130	1,890	2,080	1,570	1,440	1,450	1,620	1,650	1,770	1,800	1.7%
Calabrese	1,360	1,350	1,180	1,210	1,230	1,030	1,170	1,390	1,040	990	970	-2.3%
Cauliflower/broccoli	370	360	360	380	280	590	650	540	440	320	340	4.3%
Carrots	1,760	1,860	1,680	1,700	1,660	1,820	2,000	1,940	2,190	2,400	2,330	-3.0%
Other vegetables	1,460	1,560	1,560	1,550	1,520	1,590	1,480	1,630	1,840	2,130	1,890	-11.2%
Total vegetables for human consumption	11,300	10,370	10,780	10,600	10,110	10,590	10,680	10,570	11,310	11,780	12,230	3.8%
Bulbs, flowers & hardy nursery stock	850	860	870	890	910	910	970	980	950	910	980	8.3%
Soft fruit												
Strawberries	570	560	620	630	670	630	680	680	770	810	920	13.6%
Raspberries	1,310	1,160	880	670	570	520	520	470	430	480	540	14.0%
Blackcurrants	260	300	330	440	420	410	410	420	400	360	270	-25.9%
Mixed fruit	110	120	150	80	80	90	90	110	120	140	130	-8.7%
Total soft fruit	2,250	2,130	1,970	1,830	1,740	1,650	1,700	1,680	1,710	1,790	1,860	4.0%

FINAL RESULTS OF THE JUNE 2008 AGRICULTURAL CENSUS
TOGETHER WITH FINAL JUNE RESULTS FOR THE YEARS 1998 TO 2007 FOR COMPARISON

Table 3. Number of cattle, 1998 to 2008

	1998	1999	2000	2001	2002	2003	2004	2005	2006	2007	2008	Percentage change between 2007 & 2008
Dairy cows												
Cows and heifers in milk	187,900	187,040	181,390	170,680	173,570	172,680	168,990	170,490	171,770	170,840	166,360	-2.6%
Cows in calf but not in milk	27,680	27,450	25,960	25,280	25,830	25,290	25,550	26,220	26,800	27,150	25,800	-5.0%
Total dairy cows	215,580	214,490	207,350	195,950	199,400	197,970	194,540	196,710	198,570	197,990	192,160	-2.9%
Beef cows												
Cows and heifers in milk	427,520	413,040	406,610	385,930	389,440	386,240	394,610	393,300	388,980	378,770	373,630	-1.4%
Cows in calf but not in milk	107,000	111,720	111,990	103,140	99,350	100,890	98,260	99,020	98,220	93,450	90,730	-2.9%
Total beef cows	534,520	524,750	518,600	489,070	488,790	487,130	492,870	492,320	487,190	472,220	464,350	-1.7%
Heifers in calf for the first time												
Dairy - 2 years and over	34,660	33,480	33,380	32,010	30,020	27,480	29,740	30,130	28,120	27,750	25,800	-7.0%
- Under 2 years	19,160	19,000	18,560	17,640	16,140	15,400	16,610	16,150	16,190	16,910	16,720	-1.1%
Beef - 2 years and over	37,720	32,320	33,440	29,990	35,130	34,230	34,730	33,480	32,050	32,300	31,370	-2.9%
- Under 2 years	14,640	13,990	12,790	13,970	14,660	13,980	15,620	14,140	14,340	13,770	13,700	-0.5%
Total	106,170	98,780	98,170	93,610	95,950	91,090	96,690	93,890	90,700	90,730	87,590	-3.5%
Bulls for service												
2 years and over	16,830	16,880	16,960	16,210	16,580	16,920	17,190	17,570	18,190	18,120	18,140	0.1%
Under 2 years	3,810	3,760	3,500	3,650	3,960	3,870	3,960	4,110	3,930	3,840	3,860	0.5%
Total	20,630	20,640	20,460	19,860	20,530	20,800	21,150	21,680	22,120	21,960	22,000	0.2%
Other cattle 2 years and over												
Male	42,530	42,230	44,440	38,580	42,580	44,140	40,690	45,400	47,270	48,050	44,380	-7.6%
Female for breeding - dairy	7,600	7,780	8,060	7,290	6,720	6,450	6,760	6,220	7,000	6,630	5,930	-10.5%
- beef	19,270	21,140	23,340	22,250	22,170	22,060	23,160	24,690	24,400	26,830	25,580	-4.7%
Female not for breeding	15,860	20,510	21,070	20,100	21,510	22,710	21,280	22,920	27,430	25,560	27,210	6.4%
Total	85,270	91,660	96,910	88,230	92,990	95,370	91,880	99,220	106,090	107,070	103,090	-3.7%
Other cattle 1 year and over but under 2 years												
Male	220,480	219,280	217,640	211,490	221,110	222,170	222,940	228,460	214,560	212,440	204,100	-3.9%
Female for breeding - dairy	50,160	51,310	48,590	42,530	38,090	40,860	39,620	39,720	38,270	37,420	35,690	-4.6%
- beef	62,150	57,430	54,980	58,230	57,690	56,990	56,340	58,600	57,390	61,660	60,710	-1.5%
Female not for breeding	158,850	158,090	157,310	140,110	148,320	148,560	148,020	154,070	152,030	146,710	141,530	-3.5%
Total	491,620	486,110	478,520	452,350	465,210	468,580	466,910	480,840	462,260	458,220	442,030	-3.5%
Other cattle 6 months and over but under 1 year												
Male	109,510	108,070	111,900	105,270	104,580	105,150	105,800	102,630	101,960	97,710	93,450	-4.4%
Female	133,580	132,600	129,170	113,110	109,040	109,940	111,280	109,820	109,450	104,380	103,000	-1.3%
Total	243,090	240,670	241,070	218,380	213,620	215,100	217,080	212,450	211,410	202,090	196,460	-2.8%
Other cattle under 6 months												
Male	181,470	174,480	180,180	171,020	176,770	179,220	182,380	178,250	174,750	171,430	168,370	-1.8%
Female	199,950	192,680	188,090	176,860	181,430	183,680	186,230	183,520	180,770	176,830	176,040	-0.4%
Total	381,410	367,160	368,270	347,870	358,200	362,910	368,600	361,770	355,520	348,260	344,410	-1.1%
Total cattle	2,078,300	2,044,280	2,029,330	1,905,320	1,934,680	1,938,930	1,949,730	1,958,880	1,933,870	1,898,540	1,852,090	-2.4%

FINAL RESULTS OF THE JUNE 2008 AGRICULTURAL CENSUS
TOGETHER WITH FINAL JUNE RESULTS FOR THE YEARS 1998 TO 2007 FOR COMPARISON

Table 4. Number of sheep, 1998 to 2008

	1998	1999	2000	2001	2002	2003	2004	2005	2006	2007	2008	Percentage change between 2007 & 2008
Ewes used for breeding in previous season	3,876,740	3,877,890	3,714,670	3,277,170	3,221,700	3,192,610	3,179,430	3,141,550	3,028,600	2,919,570	2,773,840	-5.0%
Rams to be used for service	119,250	117,690	113,020	103,030	101,410	99,970	99,570	100,800	96,940	95,350	91,300	-4.2%
Other sheep 1 year and over												
For breeding	906,770	885,530	819,320	749,210	795,370	780,640	805,280	745,660	725,380	712,080	674,130	-5.3%
Other	77,960	87,230	89,540	99,190	92,560	84,270	83,870	83,470	84,020	93,930	83,120	-11.5%
Total	984,730	972,760	908,860	848,400	887,920	864,910	889,150	829,130	809,400	806,010	757,250	-6.0%
Lambs	4,823,070	4,736,980	4,450,410	3,881,290	3,852,150	3,848,850	3,814,140	3,811,590	3,692,990	3,677,280	3,472,790	-5.6%
Total sheep	9,803,790	9,705,320	9,186,970	8,109,890	8,063,190	8,006,340	7,982,300	7,883,060	7,627,930	7,498,220	7,095,190	-5.4%

FINAL RESULTS OF THE JUNE 2008 AGRICULTURAL CENSUS
TOGETHER WITH FINAL JUNE RESULTS FOR THE YEARS 1998 TO 2007 FOR COMPARISON

Table 5. Number of pigs, 1998 to 2008

	1998	1999	2000	2001	2002	2003	2004	2005	2006	2007	2008	Percentage change between 2007 & 2008
Breeding herd												
Sows in pig	47,320	40,450	40,470	40,960	37,860	34,410	35,800	32,340	31,030	30,110	26,690	-11.4%
Gilts in pig	13,210	7,730	7,100	8,240	7,900	7,530	5,280	4,200	4,530	3,830	3,530	-7.8%
Other sows	13,280	10,810	10,110	12,070	9,860	7,640	7,750	7,180	6,250	6,230	6,670	7.0%
Total	73,810	59,000	57,680	61,270	55,630	49,580	48,830	43,710	41,810	40,180	36,890	-8.2%
Barren sows for fattening	660	510	970	2,450	1,220	960	1,180	810	820	760	720	-5.8%
Gilts 50 kg & over to be used for breeding	9,380	9,100	5,860	5,650	4,720	5,310	4,640	5,260	6,320	6,140	3,890	-36.6%
Boars	3,890	3,040	2,710	2,720	2,150	1,770	1,600	1,470	1,410	1,350	1,280	-5.3%
Other pigs												
80 kg liveweight and over	64,720	57,580	64,690	65,960	62,260	70,470	64,040	78,350	66,940	61,600	64,060	4.0%
50 kg and under 80 kg liveweight	128,570	115,820	117,140	125,760	117,320	98,120	88,760	87,020	95,160	88,000	89,640	1.9%
20 kg and under 50 kg liveweight	198,290	149,160	146,870	151,840	132,050	118,910	127,110	122,820	127,210	134,800	118,700	-11.9%
Under 20 kg liveweight	190,790	154,450	162,190	180,800	150,930	143,140	133,540	129,580	124,060	123,850	120,540	-2.7%
Total other pigs	582,370	477,000	490,890	524,370	462,560	430,630	413,450	417,760	413,370	408,240	392,940	-3.7%
Total pigs	670,110	548,640	558,100	596,460	526,280	488,260	469,700	469,010	463,730	456,670	435,720	-4.6%

FINAL RESULTS OF THE JUNE 2008 AGRICULTURAL CENSUS
TOGETHER WITH FINAL JUNE RESULTS FOR THE YEARS 1998 TO 2007 FOR COMPARISON

Table 6. Number of poultry, 1998 to 2008

	1998	1999	2000	2001	2002	2003	2004	2005	2006	2007	2008	Percentage change between 2007 & 2008
Fowls for producing eggs												
Pullets and hens in the laying flock	2,257,260	2,236,930	2,245,130	2,814,060	2,647,750	2,923,580	2,938,130	2,714,540	2,735,460	2,919,810	2,952,890	1.1%
Pullets being reared for laying	638,820	643,630	774,510	721,550	925,990	946,100	855,840	1,154,730	865,260	1,237,750	1,035,530	-16.3%
Total	2,896,080	2,880,560	3,019,640	3,535,600	3,573,740	3,869,670	3,793,970	3,869,270	3,600,710	4,157,560	3,988,420	-4.1%
Fowls for breeding												
Breeding hens ⁽²⁾	1,240,020	1,164,580	1,225,550	1,219,280	1,102,960	963,410	1,217,740	1,437,610	1,258,090	1,199,840	1,166,140	-2.8%
Cocks	137,360	151,680	123,730	129,090	105,430	99,500	74,540	125,040	109,880	116,960	118,610	1.4%
Total	1,377,380	1,316,250	1,349,280	1,348,370	1,208,390	1,062,910	1,292,270	1,562,650	1,367,970	1,316,800	1,284,760	-2.4%
Broilers and other table birds ⁽²⁾	9,530,960	6,632,540	9,828,830	11,083,530	10,664,100	9,470,110	10,697,130	9,208,470	8,561,910	8,584,990	8,470,740	-1.3%
Other poultry ⁽¹⁾	108,800	108,820	99,010	89,710	97,910	68,240	80,440	63,680	69,200	69,610	71,370	2.5%
Total poultry	13,913,210	10,938,170	14,296,750	16,057,210	15,544,140	14,470,920	15,863,820	14,704,070	13,599,790	14,128,950	13,815,280	-2.2%

⁽¹⁾ The 'other poultry' category (which includes turkeys, ducks, geese, guinea fowl etc.) is volatile due to the incorrect inclusion of game birds on some census forms in some years.

⁽²⁾ The 2007 breeding hens figure has been revised down by 270,000 and the broilers and other table birds figure revised up by the same amount due to a correction to 2007 data.

FINAL RESULTS OF THE JUNE 2008 AGRICULTURAL CENSUS
 TOGETHER WITH FINAL JUNE RESULTS FOR THE YEARS 1998 TO 2007 FOR COMPARISON

Table 7. Number of other livestock, 1998 to 2008

	1998	1999	2000	2001	2002	2003	2004	2005	2006	2007	2008	Percentage change between 2007 & 2008
Deer	8,470	8,040	6,930	7,890	7,740	7,120	7,070	7,470	6,500	6,220	5,960	-4.2%
Horses												
For agricultural or horticultural use	670	650	630	710	670	650	830	700	810	840	710	-15.7%
Other horses	24,420	25,490	22,950	23,400	24,390	25,080	26,580	28,840	30,400	31,740	31,300	-1.4%
Total	25,080	26,140	23,580	24,110	25,060	25,720	27,420	29,550	31,210	32,580	32,010	-1.7%
Goats	9,550	8,860	7,660	6,910	6,830	5,880	5,570	4,290	4,520	4,180	4,160	-0.6%

FINAL RESULTS OF THE JUNE 2008 AGRICULTURAL CENSUS
TOGETHER WITH FINAL JUNE RESULTS FOR THE YEARS 1998 TO 2007 FOR COMPARISON

Table 8. Number of employees, 1998 to 2008 ⁽¹⁾

												Percentage
	1998	1999	2000	2001	2002	2003	2004	2005	2006	2007	2008	change between 2007 & 2008
Regular full-time staff												
Males : Hired	10,320	9,950	9,600	9,180	8,810	8,400	8,240	7,820	7,750	7,420	7,040	-5.1%
Family	2,940	2,980	3,070	2,960	2,580	2,580	2,470	2,280	2,200	2,130	2,010	-5.4%
Partners	2,660	2,430	2,250	2,280	2,320	2,200	2,140	2,120	2,130	2,160	2,140	-0.8%
Total	15,920	15,360	14,920	14,410	13,720	13,180	12,850	12,230	12,090	11,700	11,200	-4.3%
Females : Hired	810	740	770	810	820	740	810	820	840	980	880	-10.8%
Family	370	340	390	360	340	330	350	350	330	340	310	-10.2%
Partners	200	200	190	190	250	260	250	210	240	240	240	1.3%
Total	1,370	1,280	1,350	1,370	1,410	1,330	1,400	1,370	1,410	1,570	1,430	-8.8%
Regular part-time staff												
Males : Hired	2,130	2,020	2,130	2,190	2,150	2,240	2,190	2,190	2,240	2,420	2,120	-12.4%
Family	1,820	1,840	1,850	1,880	1,870	1,860	1,840	1,960	1,890	1,870	1,730	-7.6%
Partners	460	490	470	460	550	570	560	610	580	560	540	-3.1%
Total	4,410	4,360	4,440	4,540	4,570	4,670	4,600	4,750	4,710	4,840	4,380	-9.5%
Females : Hired	1,140	1,120	1,170	1,200	1,120	1,120	1,110	990	1,020	1,140	1,010	-10.8%
Family	1,020	990	1,020	990	960	980	920	950	930	850	840	-1.2%
Partners	250	280	240	270	280	270	290	250	240	230	260	12.8%
Total	2,400	2,380	2,430	2,450	2,360	2,370	2,330	2,190	2,190	2,220	2,120	-4.6%
Total regular staff	24,110	23,380	23,140	22,770	22,050	21,550	21,180	20,540	20,390	20,330	19,120	-5.9%
Casual and seasonal staff												
Males	2,940	2,800	2,910	2,840	3,050	3,180	3,160	3,330	3,240	3,830	3,920	2.5%
Females	710	640	750	750	900	1,040	1,070	1,300	1,290	1,780	2,000	12.5%
Total	3,640	3,430	3,670	3,590	3,950	4,220	4,230	4,630	4,530	5,610	5,920	5.6%

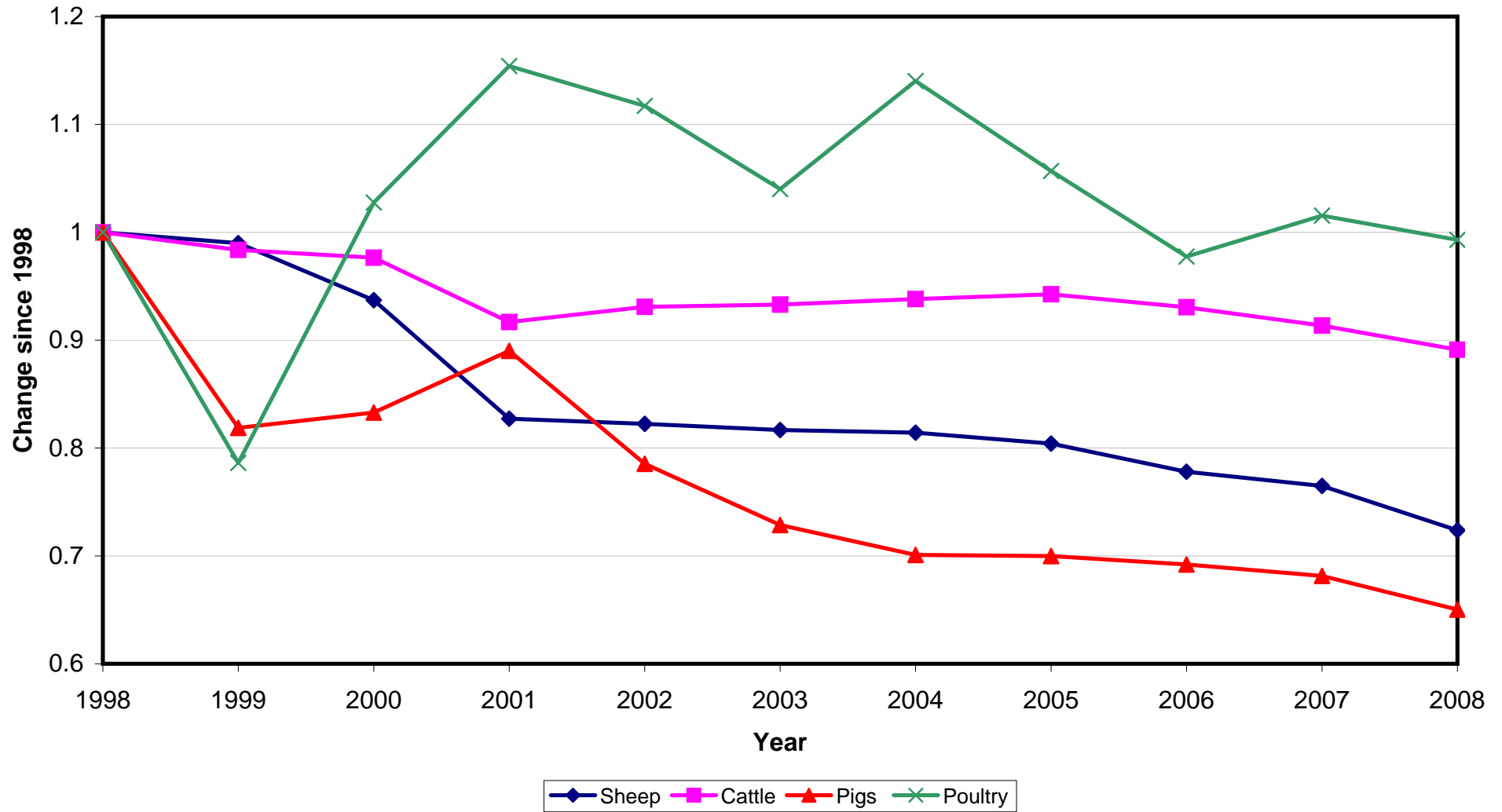
⁽¹⁾ In 1998, new questions were asked on the management of agricultural holdings, including whether legal and financial responsibility for the holding was undertaken by the occupier and other partners in a legal partnership. For such holdings, the labour questions distinguished the partners in the partnership working on the holding from hired and family workers. It appears that this change in questions may have led to the recording of workers who were not previously included in the returns. Figures from 1998 onwards are not therefore strictly comparable with those of previous years.

FINAL RESULTS OF THE JUNE 2008 AGRICULTURAL CENSUS
 TOGETHER WITH FINAL JUNE RESULTS FOR THE YEARS 1998 TO 2007 FOR COMPARISON

Table 9. Number of occupiers and spouses, 1998 to 2008

												Percentage		
	1998	1999	2000	2001	2002	2003	2004	2005	2006	2007	2008	change between 2007 & 2008		
Occupiers														
- full time	12,630	12,470	11,930	11,640	11,380	11,170	11,040	10,970	10,570	10,210	9,380		-8.1%	
- half time or more	3,940	3,890	3,970	3,960	3,890	3,790	3,850	3,860	3,750	3,730	3,720		-0.2%	
- less than half time	12,030	12,390	12,940	13,010	12,990	13,260	13,350	13,310	13,480	13,230	13,020		-1.6%	
Total	28,600	28,760	28,840	28,620	28,250	28,210	28,240	28,140	27,800	27,180	26,130		-3.9%	
Spouses														
- full time	2,420	2,400	2,270	2,230	2,140	2,140	2,070	2,030	2,030	1,970	1,830		-7.0%	
- half time or more	2,710	2,680	2,650	2,640	2,520	2,380	2,400	2,310	2,300	2,230	2,190		-1.9%	
- less than half time	8,680	8,770	8,950	8,970	9,390	9,780	9,950	9,970	9,960	9,840	9,510		-3.3%	
Total	13,810	13,850	13,880	13,840	14,050	14,300	14,420	14,310	14,280	14,040	13,530		-3.6%	
Total occupiers and spouses	42,410	42,610	42,710	42,460	42,300	42,510	42,660	42,450	42,090	41,210	39,660		-3.8%	

Livestock indices, ten-year trends relative to 1998



Land use and workforce indices, ten-year trends relative to 1998

