



# Statistics Publication Notice

Education Series

ISSN 1479-7569

## SCHOOL MEALS IN SCOTLAND, JANUARY 2004

June 22, 2004

### A Scottish Executive National Statistics Publication

This statistical publication notice provides results of the latest annual survey of school meals, including new information on the provision of free fruit and chilled drinking water.

The information was collected in January 2004 from all publicly funded schools in Scotland.

The main findings for January 2004 are:

#### Free school meals

- Nineteen per cent of pupils were known to be **entitled** to free school meals. Until this year, this figure had fallen each year since 1998, when it was 22 per cent (Table 1). A slight increase this year could be due to more accurate reporting following a change in the survey form.
- Of those entitled, 92 per cent were **registered** for free meals. This equates to 18 per cent of all pupils (Table 1).
- Of those entitled, 69 per cent were present and **took** a free school meal on the survey day, a percentage which has declined slightly in recent years. This equates to 13 per cent of all pupils (Table 2).
- Twenty-six per cent of mainstream schools had an **anonymised system** for free school meals receipt (Tables 18 and 19).

#### School meals (free or purchased)

- Of those pupils present on the survey day, 49 per cent took a meal supplied by the school, a decrease from 51 per cent in 2003 (Table 3).

#### Healthy eating

- Ninety-nine per cent of primary schools gave free **fresh fruit** to P1 and P2 pupils, and 78 per cent of all schools had free **fresh chilled water** available to pupils and staff at all times. (Tables 18, 19 and 20).

## **TABLES**

- Table 1 - Pupils entitled to free school meals by sector, 1997 to 2004
- Table 2 - Entitled pupils taking free school meals by sector, 1997 to 2004
- Table 3 - Pupils present taking school meals (free or purchased) by sector, 1997 to 2004
- Table 4a - Entitlement to free school meals, by size of school, publicly funded primary schools 2004
- Table 4b - Entitlement to free school meals, by size of school, publicly funded secondary schools 2004
- Table 5 - Entitlement to free school meals, by urban/rural indicator of school, 2004
- Table 6 - Pupils in education authority primary schools: Number of pupils entitled, registered and taking free school meals, 2004
- Table 7 - Pupils in education authority primary schools: Percentage of pupils entitled, registered and taking free school meals, 2004
- Table 8 - Pupils in education authority primary schools: Number and percentage of pupils taking school meals (free or purchased), 2004
- Table 9 - Pupils in education authority primary schools: Percentage of pupils entitled to free school meals, 1997 to 2004 (NPI 3.1.C)
- Table 10 - Pupils in education authority primary schools: Percentage of entitled pupils taking free school meals, 1997 to 2004 (NPI 3.1.C)
- Table 11 - Pupils in education authority primary schools: Percentage of pupils present taking school meals (free or purchased), 1997 to 2004
- Table 12 - Pupils in education authority secondary schools: Number of pupils entitled, registered and taking free school meals, 2004
- Table 13 - Pupils in education authority secondary schools: Percentage of pupils entitled, registered and taking free school meals, 2004
- Table 14 - Pupils in education authority secondary schools: Number and percentage of pupils taking school meals (free or purchased), 2004
- Table 15 - Pupils in education authority secondary schools: Percentage of pupils entitled to free school meals, 1997 to 2004 (NPI 3.1.C)
- Table 16 - Pupils in education authority secondary schools: Percentage of entitled pupils taking free school meals, 1997 to 2004 (NPI 3.1.C)
- Table 17 - Pupils in education authority secondary schools: Percentage of pupils present taking school meals (free or purchased), 1997 to 2004
- Table 18 - Education authority primary schools with an anonymised system, drinking water and free fruit, 2004
- Table 19 - Education authority secondary schools with an anonymised system and drinking water, 2004
- Table 20 - Education authority special schools with drinking water, 2004
- Table 21 - The price of a free meal credit (£), 2004

## **CHARTS**

Chart 1 - Percentage entitled to free school meals, 1997 to 2004

Chart 2 - Percentage take-up of free school meals, 1997 to 2004

Chart 3 - Percentage take-up of school meals (free or purchased), 1997 to 2004

Chart 4 - Meals taken by pupils in primary and secondary schools, 2004

## **BACKGROUND NOTES**

1. In January 2004 around 95 per cent of primary and 89 per cent of secondary pupils on school registers were present on census day, an increase compared with the previous year.
2. Schools in which no pupils took a school meal are excluded from tables 1-17 in the publication, as it is assumed that these schools do not provide school meals. These schools were included in some columns of Tables 18 and 20 (there were no publicly funded secondary schools in which no pupils took a school meal).
3. Figures for special schools may be unreliable, as all pupils in the school may be automatically given free school meals. They have therefore not been published in the local authority tables.
4. Figures for primary schools may include some nursery school pupils attending primary schools.
5. The number of pupils entitled to free school meals was not available in Edinburgh. Therefore, the percentage of pupils entitled to free school meals in each school in the January 2003 School Meals Survey was applied to the school roll figure from January 2004 School Meals Survey, to obtain the estimated number of pupils entitled to free school meals (or the number registered, which was used if it was higher).
6. The number of pupils entitled to free school meals in East Renfrewshire was higher than normal due to their misinterpretation about the eligibility for free school meals.
7. The rural/ urban classifications in Table 5 are defined as follows:
  - Large urban areas — settlements over 125,000 population. This covers the city conurbations of Edinburgh, Glasgow, Aberdeen and Dundee.
  - Other urban areas — settlements of 10,000 to 125,000 people.
  - Accessible small towns — settlements of between 3,000 and 10,000 people and within 30 minutes drive of a settlement of 10,000 or more.
  - Small remote towns — settlements of between 3,000 and 10,000 people, who are not within 30 minutes drive of a settlement of 10,000 or more people.
  - Accessible rural areas — settlements of less than 3,000 people and within 30 minutes drive of a settlement of 10,000 or more people
  - Remote rural areas — settlements of less than 3,000 people who are not within 30 minutes drive of a settlement of 10,000 or more people.
8. The information in this publication is used for benchmarking performance, and has been used in calculating the distribution of grant support to local authorities in previous years. Entitlement to free school meals is widely used as an indicator of deprivation, which can be seen to be linked to attainment

levels, attendance rates etc. Tables 9, 10, 15 and 16 are National Priority indicators.

### **Entitlement and registration**

9. Local Authorities are issued with agreed guidance to allow for a figure to be given for those pupils whom they understand to be entitled to free school meals but who are not registered as such on their systems. For the first time this year, the number of pupils registered was also collected. Some authorities returned the same number of pupils registered as entitled (generally those showing 100 per cent in the third column of tables 7 and 13).
10. Pupils entitled to free school meals are those within families who receive Income Support (IS) or Income-based Job Seekers Allowance (IBJSA). Those within families who receive support under Part VI of the Immigration and Asylum Act 1999 may also be entitled. Children who receive IS or IBJSA in their own right are also entitled to receive free school meals. Also entitled are children whose parents or carers receive Child Tax Credit, do not receive Working Tax Credit and have an annual income (as assessed by the Inland Revenue) of below £13,230.

### **Healthy eating**

11. This publication also gives new information on the Executive's healthy eating campaign. Ministers accepted all of the recommendations in the report of the Expert Panel on School Meals. This was set up to improve the provision, presentation and nutrition of school meals and increase take up. Amongst other measures, standalone nutrient standards have been issued to authorities. We have also provided detailed guidance on implementing the Panel's recommendations and setting up a free fruit scheme. The three aspects of this initiative which were measured in the survey are:
  - Anonymised system: whether there is a system in place (e.g. a swipe card system) that ensures that recipients of free school meals remain anonymous.
  - Drinking water: whether there is an adequate supply of readily accessible drinking water for pupils and staff, which is free, fresh and chilled, provided with drinking cups, glasses or drinking bottles both within the dining room and available during periods of learning.
  - Free fruit: whether P1 and P2 pupils are supplied with free fruit at least three times per week, in addition to any fruit provided as part of the lunch.
12. **This is a National Statistics publication.** National Statistics are produced to high professional standards set out in the National Statistics Code of Practice. They undergo regular quality assurance reviews to ensure that they meet customer needs. They are produced free from any political interference.
13. The following symbol is used in the publication:
  - = zero or rounds to zero
  - n/a = not available
  - \* = where numbers involve fewer than five individuals. Where this figure then contributes to the total, it has been assumed throughout that this figure is 3.
14. The team responsible for producing this document was: Mal Cooke, Bianca Heggie, Colin Gallacher, Aileen Kirchen, Douglas White.
15. All tables are available on the Scottish Executive website at <http://www.scotland.gov.uk/stats/bulletins/00347-00.asp>

### **Enquiries or comments**

16. Public enquiries (non-media) about the information contained in this News Release should be addressed to Mal Cooke, ECSU, Scottish Executive Education Department, Area 1A, Victoria Quay, Edinburgh EH6 6QQ. Telephone 0131 244 1689 or email [school.stats@scotland.gsi.gov.uk](mailto:school.stats@scotland.gsi.gov.uk)
17. Media enquiries about the information in this News Release should be addressed to Michael Bargeton Telephone 0131 244 2087

Statistics Publication Notice  
22 June 2004

**Table 1: Pupils entitled to free school meals by sector, 1997 to 2004**

		1997	1998	1999	2000	2001	2002	2003	2004
Pupils on school roll	Total	754,739	748,529	747,968	744,577	739,511	733,520	730,372	723,355
	Primary	440,486	438,024	436,149	430,522	424,525	421,158	414,691	406,919
	Secondary	306,758	302,791	304,406	306,159	307,024	304,451	308,086	308,770
	Special	7,495	7,714	7,413	7,896	7,962	7,911	7,595	7,666
Pupils entitled to free meals	Total	163,467	164,193	154,458	150,938	144,284	138,482	137,396	138,808
	Primary	105,165	104,702	96,840	93,406	88,286	85,331	83,597	83,994
	Secondary	53,135	54,381	53,264	52,788	51,194	48,455	49,389	50,156
	Special	5,167	5,110	4,354	4,744	4,804	4,696	4,410	4,658
Pupils registered for free meals <sup>(1)</sup>	Total								127,897
	Primary								77,757
	Secondary								45,585
	Special								4,555
Percentage of pupils entitled to free meals	Total	21.7	21.9	20.7	20.3	19.5	18.9	18.8	19.2
	Primary	23.9	23.9	22.2	21.7	20.8	20.3	20.2	20.6
	Secondary	17.3	18.0	17.5	17.2	16.7	15.9	16.0	16.2
	Special	68.9	66.2	58.7	60.1	60.3	59.4	58.1	60.8

(1) Not collected before 2004

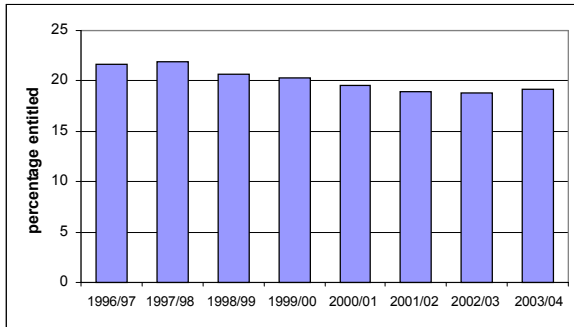
**Table 2: Entitled pupils taking free school meals by sector, 1997 to 2004**

		1997	1998	1999	2000	2001	2002	2003	2004
Pupils entitled to free meals	Total	163,467	164,193	154,458	150,938	144,284	138,482	137,396	138,808
	Primary	105,165	104,702	96,840	93,406	88,286	85,331	83,597	83,994
	Secondary	53,135	54,381	53,264	52,788	51,194	48,455	49,389	50,156
	Special	5,167	5,110	4,354	4,744	4,804	4,696	4,410	4,658
Pupils entitled to and taking free meals	Total	114,364	109,686	108,409	109,953	103,289	100,203	96,742	96,116
	Primary	79,652	76,179	74,324	73,500	68,649	67,084	64,547	64,055
	Secondary	30,114	29,094	30,202	32,293	30,376	29,028	28,245	28,017
	Special	4,598	4,413	3,883	4,160	4,264	4,091	3,950	4,044
Percentage of entitled pupils taking free meals	Total	70.0	66.8	70.2	72.8	71.6	72.4	70.4	69.2
	Primary	75.7	72.8	76.7	78.7	77.8	78.6	77.2	76.3
	Secondary	56.7	53.5	56.7	61.2	59.3	59.9	57.2	55.9
	Special	89.0	86.4	89.2	87.7	88.8	87.1	89.6	86.8

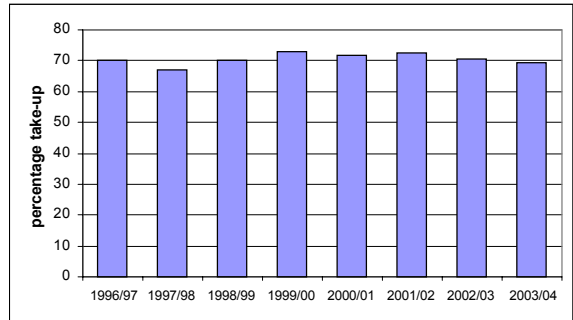
**Table 3: Pupils present taking school meals (free or purchased) by sector, 1997 to 2004**

		1997	1998	1999	2000	2001	2002	2003	2004
Pupils present on census day	Total	693,948	671,991	670,812	688,235	665,012	669,809	659,418	668,144
	Primary	417,356	403,254	403,615	408,799	392,982	396,810	385,004	387,090
	Secondary	269,951	262,060	260,678	272,535	265,160	266,027	267,822	274,299
	Special	6,641	6,677	6,519	6,901	6,870	6,972	6,592	6,755
Pupils present and taking meals	Total	301,229	314,620	311,305	326,451	324,309	336,557	333,989	329,179
	Primary	187,490	195,508	189,171	192,283	189,462	196,826	191,142	189,310
	Secondary	107,893	113,385	116,615	128,055	128,730	133,721	137,028	133,933
	Special	5,846	5,727	5,519	6,113	6,117	6,010	5,819	5,936
Percentage of those present taking meals	Total	43.4	46.8	46.4	47.4	48.8	50.2	50.6	49.3
	Primary	44.9	48.5	46.9	47.0	48.2	49.6	49.6	48.9
	Secondary	40.0	43.3	44.7	47.0	48.5	50.3	51.2	48.8
	Special	88.0	85.8	84.7	88.6	89.0	86.2	88.3	87.9

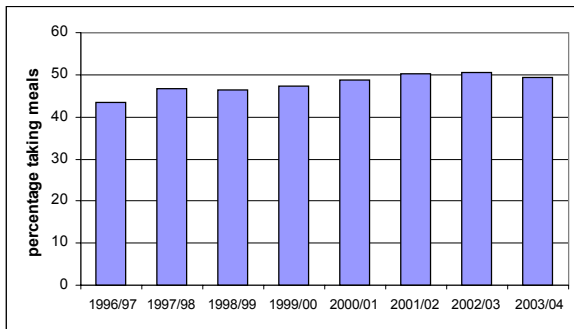
**Chart 1: Percentage entitled to free school meals, 1997 to 2004**



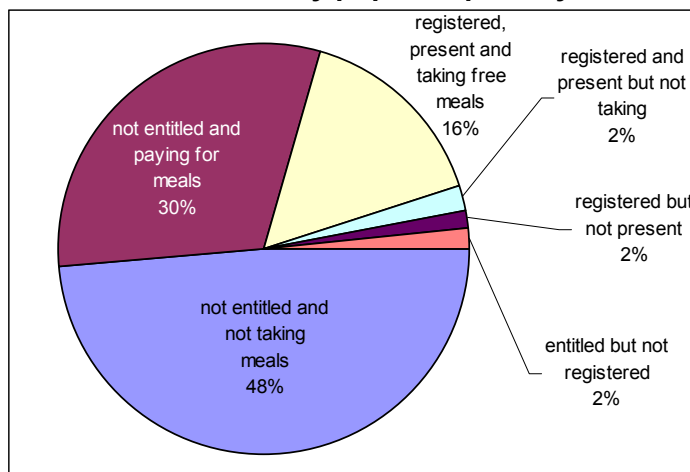
**Chart 2: Percentage take-up of free school meals, 1997 to 2004**



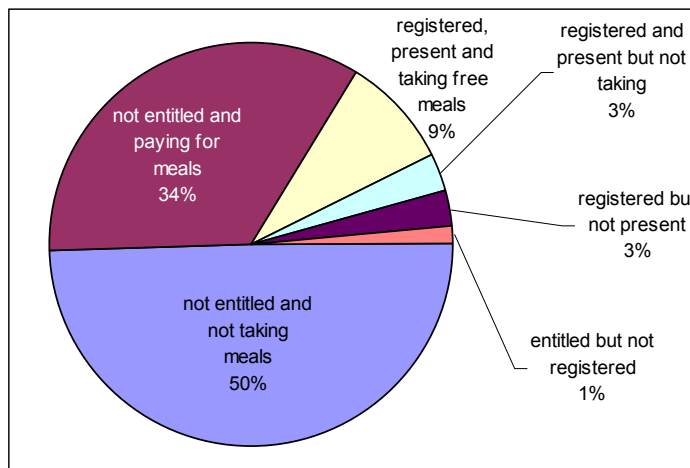
**Chart 3: Percentage take-up of school meals (free or purchased), 1997 to 2004**



**Chart 4: Meals taken by pupils in primary and secondary schools, 2004**



**Primary schools**



**Secondary schools**

**Table 4a: Entitlement to free school meals, by size of school, publicly funded primary schools, 2004**

School roll	Number of schools	Pupils on school roll	Pupils entitled to free meals	% of pupils entitled to free meals
Less than 50	421	12,215	1,336	10.9
50-99	324	23,691	4,382	18.5
100-149	273	34,228	10,011	29.2
150-199	285	49,834	13,944	28.0
200-249	269	60,150	14,925	24.8
250-299	215	58,977	13,313	22.6
300-399	275	95,176	16,321	17.1
400+	158	72,648	9,761	13.4
Total	2,220	406,919	83,994	20.6

**Table 4b: Entitlement to free school meals, by size of school, publicly funded secondary schools, 2004**

School roll	Number of schools	Pupils on school roll	Pupils entitled to free meals	% of pupils entitled to free meals
Less than 200	32	2,521	181	7.2
200-399	21	6,674	1,010	15.1
400-499	24	10,873	2,383	21.9
500-599	29	15,971	2,892	18.1
600-699	28	18,188	3,403	18.7
700-799	44	32,776	6,424	19.6
800-899	55	46,431	7,906	17.0
900-999	42	39,867	6,242	15.7
1,000-1,099	35	36,883	4,950	13.4
1,100-1,199	28	32,179	4,623	14.4
1,200+	48	66,407	10,142	15.3
Total	386	308,770	50,156	16.2

**Table 5: Entitlement to free school meals, by urban/rural indicator of school, 2004**

		Large urban	Other urban	Accessible towns	Remote towns	Accessible rural	Remote rural
Pupils on school roll	Total	259,241	235,204	85,622	30,137	80,051	33,100
	Primary	145,089	127,411	46,749	12,928	52,582	22,160
	Secondary	109,897	105,305	38,607	17,153	26,904	10,904
	Special	4,255	2,488	266	56	565	36
Pupils entitled to free meals	Total	67,169	43,477	11,192	3,819	9,843	3,308
	Primary	40,498	25,847	7,195	2,088	5,919	2,447
	Secondary	24,169	16,073	3,872	1,694	3,493	855
	Special	2,502	1,557	125	37	431	6
Percentage of pupils entitled to free meals	Total	25.9	18.5	13.1	12.7	12.3	10.0
	Primary	27.9	20.3	15.4	16.2	11.3	11.0
	Secondary	22.0	15.3	10.0	9.9	13.0	7.8
	Special	58.8	62.6	47.0	66.1	76.3	16.7

**Table 6: Pupils in education authority primary schools:  
Number of pupils entitled, registered and taking free school meals, 2004**

	Pupils on the school roll	Pupils entitled to free meals	Pupils entitled and registered for free meals	Registered pupils present on census day	Pupils present and taking free meals
Scotland	406,919	83,994	77,757	71,009	64,055
Aberdeen City	13,752	2,246	2,196	1,983	1,824
Aberdeenshire	20,319	1,623	1,623	1,502	1,440
Angus	9,281	1,513	1,199	1,068	920
Argyll & Bute	7,105	917	917	855	801
Clackmannanshire	4,201	998	940	870	767
Dumfries & Galloway	11,959	1,345	1,345	1,243	1,157
Dundee City	10,657	2,823	2,199	2,012	1,894
East Ayrshire	10,100	2,104	2,101	1,978	1,812
East Dunbartonshire	9,773	827	827	784	636
East Lothian	7,908	1,553	966	883	830
East Renfrewshire	8,764	1,473	1,398	1,325	1,045
Edinburgh, City of <sup>(1)</sup>	26,828	6,078	5,242	5,003	4,595
Eilean Siar	2,177	269	269	250	244
Falkirk	12,213	2,307	2,251	2,093	2,066
Fife	28,716	6,704	5,147	4,789	4,245
Glasgow City	41,796	17,516	17,516	15,561	13,910
Highland	18,013	2,565	2,358	2,103	1,939
Inverclyde	6,700	1,655	1,655	1,571	1,367
Midlothian	6,867	1,241	1,068	983	953
Moray	7,825	786	754	687	642
North Ayrshire	11,721	2,984	2,886	2,613	2,425
North Lanarkshire	28,303	6,633	6,195	5,610	4,864
Orkney Islands	1,709	372	372	340	335
Perth & Kinross	10,660	881	869	822	760
Renfrewshire	14,336	3,240	2,788	2,653	2,308
Scottish Borders	8,921	746	731	676	604
Shetland Islands	2,018	135	134	126	123
South Ayrshire	8,649	1,567	1,473	1,398	1,196
South Lanarkshire	25,398	4,904	4,868	4,149	3,660
Stirling	7,060	964	964	894	777
West Dunbartonshire	7,819	2,064	2,054	1,903	1,779
West Lothian	14,909	2,961	2,452	2,282	2,137
Grant Maintained	462	-	-	-	-

(1) The number of pupils entitled to free meals in Edinburgh was unavailable, so figures were estimated. See background note 3 for further information.

**Table 7: Pupils in education authority primary schools:  
Percentage of pupils entitled, registered and taking free school meals, 2004**

	Percentage of school roll entitled to free meals	Percentage of school roll registered for free meals	Percentage of those entitled who are registered	Percentage of those entitled taking free meals	Percentage of those present and registered who took free meals
Scotland	21	19	93	76	90
Aberdeen City	16	16	98	81	92
Aberdeenshire	8	8	100	89	96
Angus	16	13	79	61	86
Argyll & Bute	13	13	100	87	94
Clackmannanshire	24	22	94	77	88
Dumfries & Galloway	11	11	100	86	93
Dundee City	26	21	78	67	94
East Ayrshire	21	21	100	86	92
East Dunbartonshire	8	8	100	77	81
East Lothian	20	12	62	53	94
East Renfrewshire	17	16	95	71	79
Edinburgh, City of <sup>(1)</sup>	23	20	86	76	92
Eilean Siar	12	12	100	91	98
Falkirk	19	18	98	90	99
Fife	23	18	77	63	89
Glasgow City	42	42	100	79	89
Highland	14	13	92	76	92
Inverclyde	25	25	100	83	87
Midlothian	18	16	86	77	97
Moray	10	10	96	82	93
North Ayrshire	25	25	97	81	93
North Lanarkshire	23	22	93	73	87
Orkney Islands	22	22	100	90	99
Perth & Kinross	8	8	99	86	92
Renfrewshire	23	19	86	71	87
Scottish Borders	8	8	98	81	89
Shetland Islands	7	7	99	91	98
South Ayrshire	18	17	94	76	86
South Lanarkshire	19	19	99	75	88
Stirling	14	14	100	81	87
West Dunbartonshire	26	26	100	86	93
West Lothian	20	16	83	72	94
Grant Maintained	-	-	-	-	-

(1) The number of pupils entitled to free meals in Edinburgh was unavailable, so figures were estimated. See background note 3 for further information.

**Table 8: Pupils in education authority primary schools:  
Number and percentage of pupils taking school meals (free or purchased), 2004**

	Pupils on the school roll	Pupils present on census day	Pupils present taking meals	Percentage of those present who take meals
Scotland	406,919	387,090	189,310	49
Aberdeen City	13,752	13,029	6,951	53
Aberdeenshire	20,319	19,206	9,857	51
Angus	9,281	8,927	3,436	38
Argyll & Bute	7,105	6,815	3,761	55
Clackmannanshire	4,201	3,989	1,699	43
Dumfries & Galloway	11,959	11,427	5,365	47
Dundee City	10,657	10,093	4,437	44
East Ayrshire	10,100	9,655	4,383	45
East Dunbartonshire	9,773	9,467	3,666	39
East Lothian	7,908	7,592	3,423	45
East Renfrewshire	8,764	8,465	3,162	37
Edinburgh, City of	26,828	25,489	9,847	39
Eilean Siar	2,177	2,064	1,310	63
Falkirk	12,213	11,698	7,033	60
Fife	28,716	27,349	12,667	46
Glasgow City	41,796	38,428	25,254	66
Highland	18,013	17,037	7,838	46
Inverclyde	6,700	6,424	3,435	53
Midlothian	6,867	6,610	4,241	64
Moray	7,825	7,450	3,034	41
North Ayrshire	11,721	11,163	5,985	54
North Lanarkshire	28,303	27,057	11,718	43
Orkney Islands	1,709	1,629	1,282	79
Perth & Kinross	10,660	10,224	4,238	41
Renfrewshire	14,336	13,867	6,353	46
Scottish Borders	8,921	8,440	2,959	35
Shetland Islands	2,018	1,948	1,717	88
South Ayrshire	8,649	8,309	4,000	48
South Lanarkshire	25,398	24,252	12,159	50
Stirling	7,060	6,736	3,024	45
West Dunbartonshire	7,819	7,461	4,394	59
West Lothian	14,909	14,328	6,537	46
Grant Maintained	462	462	145	31

**Table 9: Pupils in education authority primary schools:  
Percentage of pupils entitled to free school meals, 1997 to 2004  
(National Priorities Indicator 3.1.C)**

	1997	1998	1999	2000	2001	2002	2003	2004
Scotland	23.9	23.9	22.2	21.7	20.8	20.3	20.2	20.6
Aberdeen City	15.7	15.5	14.9	15.6	15.0	15.3	15.1	16.3
Aberdeenshire	7.0	7.1	7.1	7.4	7.7	7.5	7.6	8.0
Angus	11.8	13.7	13.1	12.2	11.9	11.7	12.6	16.3
Argyll & Bute	15.9	15.4	15.2	14.0	13.2	12.9	12.7	12.9
Clackmannanshire	25.5	24.3	25.3	22.9	22.5	22.1	22.3	23.8
Dumfries & Galloway	14.3	15.6	13.6	13.4	12.5	12.3	11.8	11.2
Dundee City	34.9	34.4	31.5	30.5	28.8	27.7	27.6	26.5
East Ayrshire	26.0	24.8	25.2	23.5	23.3	22.5	21.9	20.8
East Dunbartonshire	9.8	9.6	9.2	9.2	9.0	8.8	8.6	8.5
East Lothian	15.6	18.4	15.8	15.8	14.2	13.2	17.0	19.6
East Renfrewshire	11.1	10.6	10.5	10.0	8.7	8.3	8.7	16.8
Edinburgh, City of <sup>(1)</sup>	29.1	29.2	23.2	25.2	24.4	24.6	22.9	22.7
Eilean Siar	14.1	14.0	12.8	13.5	12.8	11.4	10.8	12.4
Falkirk	23.2	21.3	20.9	20.8	19.8	19.5	17.9	18.9
Fife	21.1	20.5	19.8	19.2	18.5	17.7	19.6	23.3
Glasgow City	46.0	47.9	44.8	43.3	42.4	42.5	41.5	41.9
Highland	16.7	15.8	15.2	16.8	17.4	16.6	14.7	14.2
Inverclyde	27.3	25.9	24.6	25.4	24.3	24.6	24.1	24.7
Midlothian	18.4	19.8	18.7	19.5	18.3	15.8	16.7	18.1
Moray	12.4	12.0	11.4	12.3	10.8	10.4	10.2	10.0
North Ayrshire	29.8	29.1	28.4	27.1	26.8	25.7	25.0	25.5
North Lanarkshire	27.2	27.6	27.3	26.5	25.7	24.8	23.8	23.4
Orkney Islands	12.0	10.8	8.5	8.3	15.5	18.0	22.4	21.8
Perth & Kinross	10.7	10.7	9.6	9.0	8.7	8.4	7.7	8.3
Renfrewshire	37.6	38.3	35.0	25.8	23.9	23.2	22.7	22.6
Scottish Borders	9.4	8.7	9.3	10.2	9.3	8.4	8.6	8.4
Shetland Islands	12.3	9.9	8.0	7.8	8.1	6.8	6.6	6.7
South Ayrshire	19.7	18.5	17.5	17.6	16.9	16.3	16.3	18.1
South Lanarkshire	23.2	23.6	21.9	21.8	20.4	19.5	19.8	19.3
Stirling	17.9	18.4	17.5	17.6	15.4	14.3	14.7	13.7
West Dunbartonshire	32.1	31.8	31.9	31.1	27.9	27.1	28.0	26.4
West Lothian	23.8	22.4	17.6	19.3	16.6	16.2	20.6	19.9
Grant Maintained <sup>(2)</sup>	<i>n/a</i>	<i>n/a</i>	<i>n/a</i>	<i>n/a</i>	<i>n/a</i>	<i>n/a</i>	<i>n/a</i>	-

(1) The number of pupils entitled to free meals in Edinburgh was unavailable, so figures were estimated. See background note 3 for further information.

(2) Grant maintained schools were previously included within Glasgow

**Table 10: Pupils in education authority primary schools:  
Percentage of entitled pupils taking free school meals, 1997 to 2004  
(National Priorities Indicator 3.1.C)**

	1997	1998	1999	2000	2001	2002	2003	2004
Scotland	75.7	72.8	76.7	78.7	77.8	78.6	77.2	76.3
Aberdeen City	85.8	85.5	86.9	88.9	84.8	85.2	81.5	81.2
Aberdeenshire	94.7	93.6	92.0	92.6	89.8	88.7	84.3	88.7
Angus	84.4	73.4	68.0	80.3	82.5	79.2	77.9	60.8
Argyll & Bute	85.3	80.8	82.2	86.7	84.7	86.1	83.7	87.4
Clackmannanshire	85.7	88.9	83.0	88.4	85.3	85.6	81.0	76.9
Dumfries & Galloway	92.8	85.0	86.0	88.7	86.7	86.1	82.0	86.0
Dundee City	61.1	60.0	63.2	64.4	62.6	66.0	66.6	67.1
East Ayrshire	82.5	76.3	75.4	84.3	78.4	82.3	83.5	86.1
East Dunbartonshire	77.3	73.6	78.4	80.8	78.9	77.9	77.3	76.9
East Lothian	87.4	68.8	71.9	73.3	71.5	67.8	54.3	53.4
East Renfrewshire	78.8	76.5	77.6	77.4	79.3	80.1	76.0	70.9
Edinburgh, City of <sup>(1)</sup>	70.2	68.2	77.3	72.8	71.0	68.1	73.4	75.6
Eilean Siar	84.9	84.8	88.3	87.2	83.3	85.7	78.7	90.7
Falkirk	77.6	84.2	86.2	87.5	86.7	85.7	92.3	89.6
Fife	84.1	82.7	84.2	85.2	81.2	83.9	74.0	63.3
Glasgow City	73.6	67.6	76.4	78.9	78.4	80.4	79.8	79.4
Highland	82.6	82.4	82.1	71.0	67.1	69.8	72.9	75.6
Inverclyde	82.7	81.6	79.5	83.5	82.7	81.1	77.5	82.6
Midlothian	85.7	80.2	76.7	75.2	77.7	77.9	79.1	76.8
Moray	92.1	88.7	91.3	90.1	83.4	86.5	84.1	81.7
North Ayrshire	86.9	83.9	88.5	86.6	84.1	84.7	82.4	81.3
North Lanarkshire	66.2	68.7	71.6	72.7	71.4	72.4	72.2	73.3
Orkney Islands	76.8	91.4	92.8	93.8	82.6	92.1	85.9	90.1
Perth & Kinross	86.0	85.4	90.8	86.9	83.7	85.0	85.8	86.3
Renfrewshire	49.2	44.9	45.7	67.3	69.8	70.4	71.3	71.2
Scottish Borders	79.4	88.1	82.7	84.3	84.2	85.4	82.1	81.0
Shetland Islands	92.3	90.0	93.0	90.2	89.0	88.0	92.6	91.1
South Ayrshire	89.2	83.7	83.0	82.1	85.5	85.9	86.1	76.3
South Lanarkshire	75.1	71.3	75.1	73.7	73.2	75.8	74.4	74.6
Stirling	85.3	85.5	79.1	81.3	85.0	83.5	79.9	80.6
West Dunbartonshire	85.2	79.1	78.1	83.2	86.0	84.2	84.8	86.2
West Lothian	71.9	74.2	86.4	78.5	87.8	87.0	71.2	72.2
Grant Maintained <sup>(2)</sup>	n/a	n/a	n/a	n/a	n/a	n/a	n/a	-

(1) The number of pupils entitled to free meals in Edinburgh was unavailable, so figures were estimated. See background note 3 for further information.

(2) Grant maintained schools were previously included within Glasgow

**Table 11: Pupils in education authority primary schools:  
Percentage of pupils present taking school meals (free or purchased),  
1997 to 2004**

	1997	1998	1999	2000	2001	2002	2003	2004
Scotland	44.9	48.5	46.9	47.0	48.2	49.6	49.6	48.9
Aberdeen City	46.7	50.0	46.9	46.8	49.6	47.8	50.7	53.4
Aberdeenshire	40.4	47.9	49.8	55.6	53.5	54.6	53.8	51.3
Angus	32.8	31.6	28.5	35.1	43.7	36.1	39.4	38.5
Argyll & Bute	52.3	58.4	54.7	56.6	54.9	57.0	58.5	55.2
Clackmannanshire	56.2	49.9	52.3	47.4	51.1	49.8	48.6	42.6
Dumfries & Galloway	56.8	59.6	61.2	60.8	57.8	58.9	55.4	47.0
Dundee City	35.9	45.6	41.9	38.8	42.9	44.9	43.0	44.0
East Ayrshire	43.3	45.0	38.8	40.7	43.3	44.0	46.4	45.4
East Dunbartonshire	42.5	47.2	42.7	45.4	39.8	42.7	38.9	38.7
East Lothian	44.5	48.1	42.6	45.3	45.3	45.2	45.7	45.1
East Renfrewshire	37.2	35.7	32.1	30.8	31.0	37.6	37.2	37.4
Edinburgh, City of	45.3	39.9	35.6	35.7	37.6	36.9	38.2	38.6
Eilean Siar	52.1	54.7	56.7	56.5	57.0	60.5	61.2	63.5
Falkirk	52.8	54.4	55.2	55.0	59.0	59.6	59.9	60.1
Fife	47.2	56.9	52.2	46.7	46.2	51.0	48.5	46.3
Glasgow City	54.2	59.5	58.4	60.7	61.7	63.0	65.0	65.7
Highland	36.8	37.4	38.1	38.6	39.9	43.4	44.6	46.0
Inverclyde	47.0	56.6	60.1	60.3	57.3	59.0	56.1	53.5
Midlothian	47.4	51.7	44.7	48.8	49.3	53.3	55.5	64.2
Moray	38.2	45.1	39.7	41.1	40.6	41.6	42.5	40.7
North Ayrshire	57.8	61.1	61.6	57.5	57.1	57.0	59.3	53.6
North Lanarkshire	32.3	36.0	37.1	35.3	42.6	44.9	44.3	43.3
Orkney Islands	60.5	77.0	75.2	71.5	80.8	80.4	77.7	78.7
Perth & Kinross	32.1	42.4	37.2	39.1	44.8	42.6	37.9	41.5
Renfrewshire	40.6	41.8	35.7	44.8	44.7	52.1	48.3	45.8
Scottish Borders	31.2	41.1	36.8	39.6	39.1	37.8	33.3	35.1
Shetland Islands	79.3	83.2	85.9	88.7	88.5	89.1	90.5	88.1
South Ayrshire	46.5	52.3	51.3	50.6	49.4	50.5	53.2	48.1
South Lanarkshire	42.1	41.9	47.4	44.3	45.4	47.6	48.7	50.1
Stirling	43.9	48.8	49.3	49.5	46.4	47.3	48.0	44.9
West Dunbartonshire	55.2	66.7	62.2	52.5	59.4	58.5	63.5	58.9
West Lothian	49.6	48.1	45.3	44.6	42.5	43.0	44.9	45.6
Grant Maintained	n/a	n/a	n/a	n/a	n/a	n/a	n/a	31.4

**Table 12: Pupils in education authority secondary schools:  
Number of pupils entitled, registered and taking free school meals, 2004**

	Pupils on the school roll	Pupils entitled to free meals	Pupils entitled and registered for free meals	Registered pupils present on census day	Pupils present and taking free meals
Scotland	308,770	50,156	45,585	37,406	28,017
Aberdeen City	10,299	907	870	711	554
Aberdeenshire	15,457	741	741	581	457
Angus	6,957	729	596	469	431
Argyll & Bute	5,539	506	506	431	330
Clackmannanshire	2,943	519	472	380	237
Dumfries & Galloway	9,383	636	636	574	493
Dundee City	8,160	1,653	1,203	953	701
East Ayrshire	7,868	1,246	1,210	1,018	833
East Dunbartonshire	8,728	799	757	607	392
East Lothian	5,437	902	480	397	297
East Renfrewshire	7,402	1,261	1,139	993	721
Edinburgh, City of <sup>(1)</sup>	19,525	3,389	2,770	2,333	1,876
Eilean Siar	1,925	152	152	104	103
Falkirk	8,710	1,289	1,233	1,051	935
Fife	21,983	4,136	2,818	2,391	1,950
Glasgow City	29,367	10,400	10,400	8,441	5,901
Highland	14,460	1,517	1,365	1,147	911
Inverclyde	5,350	1,062	1,062	979	596
Midlothian	5,364	612	605	605	324
Moray	5,739	438	438	371	262
North Ayrshire	8,812	1,894	1,812	1,560	1,205
North Lanarkshire	21,438	3,910	3,702	3,097	2,419
Orkney Islands	1,423	207	207	159	159
Perth & Kinross	7,609	439	420	357	329
Renfrewshire	11,285	2,113	1,805	1,379	1,118
Scottish Borders	6,794	383	379	322	258
Shetland Islands	1,634	79	79	72	64
South Ayrshire	7,173	1,025	966	777	575
South Lanarkshire	19,207	3,242	3,223	2,520	1,447
Stirling	5,714	693	693	523	397
West Dunbartonshire	6,170	1,653	1,509	1,060	873
West Lothian	10,336	1,621	1,334	1,041	866
Grant Maintained <sup>(2)</sup>	579	*	*	*	*

(1) The number of pupils entitled to free meals in Edinburgh was unavailable, so figures were estimated. See background note 3 for further information.

(2) Where numbers involve fewer than five individuals, data has been marked by a \*. Where this figure then contributes to the total, it has been substituted by the figure 3

**Table 13: Pupils in education authority secondary schools:  
Percentage of pupils entitled, registered and taking free school meals, 2004**

	Percentage of school roll entitled to free meals	Percentage of school roll registered for free meals	Percentage of those entitled who are registered	Percentage of those entitled taking free meals	Percentage of those present and registered who took free meals
Scotland	16	15	91	56	75
Aberdeen City	9	8	96	61	78
Aberdeenshire	5	5	100	62	79
Angus	10	9	82	59	92
Argyll & Bute	9	9	100	65	77
Clackmannanshire	18	16	91	46	62
Dumfries & Galloway	7	7	100	78	86
Dundee City	20	15	73	42	74
East Ayrshire	16	15	97	67	82
East Dunbartonshire	9	9	95	49	65
East Lothian	17	9	53	33	75
East Renfrewshire	17	15	90	57	73
Edinburgh, City of <sup>(1)</sup>	17	14	82	55	80
Eilean Siar	8	8	100	68	99
Falkirk	15	14	96	73	89
Fife	19	13	68	47	82
Glasgow City	35	35	100	57	70
Highland	10	9	90	60	79
Inverclyde	20	20	100	56	61
Midlothian	11	11	99	53	54
Moray	8	8	100	60	71
North Ayrshire	21	21	96	64	77
North Lanarkshire	18	17	95	62	78
Orkney Islands	15	13	100	77	100
Perth & Kinross	6	6	96	75	92
Renfrewshire	19	16	85	53	81
Scottish Borders	6	6	99	67	80
Shetland Islands	5	5	100	81	89
South Ayrshire	14	13	94	56	74
South Lanarkshire	17	17	99	45	57
Stirling	12	12	100	57	76
West Dunbartonshire	27	24	91	53	82
West Lothian	16	13	82	53	83
Grant Maintained	*	*	100	100	100

(1) The number of pupils entitled to free meals in Edinburgh was unavailable, so figures were estimated. See background note 3 for further information.

**Table 14: Pupils in education authority secondary schools:  
Number and percentage of pupils taking school meals (free or purchased), 2004**

	Pupils on the school roll	Pupils present on census day	Pupils present taking meals	Percentage of those present who take meals
Scotland	308,770	274,299	133,933	49
Aberdeen City	10,299	9,185	5,033	55
Aberdeenshire	15,457	14,492	6,547	45
Angus	6,957	6,100	2,867	47
Argyll & Bute	5,539	5,069	2,979	59
Clackmannanshire	2,943	2,529	939	37
Dumfries & Galloway	9,383	8,514	4,597	54
Dundee City	8,160	7,209	1,975	27
East Ayrshire	7,868	7,080	3,189	45
East Dunbartonshire	8,728	8,042	3,304	41
East Lothian	5,437	4,980	1,680	34
East Renfrewshire	7,402	6,839	3,809	56
Edinburgh, City of	19,525	17,026	5,809	34
Eilean Siar	1,925	1,268	770	61
Falkirk	8,710	7,758	4,068	52
Fife	21,983	19,617	11,052	56
Glasgow City	29,367	24,037	11,151	46
Highland	14,460	12,847	9,074	71
Inverclyde	5,350	4,905	2,352	48
Midlothian	5,364	4,949	3,569	72
Moray	5,739	5,220	2,215	42
North Ayrshire	8,812	7,966	3,431	43
North Lanarkshire	21,438	19,293	9,695	50
Orkney Islands	1,423	1,322	839	63
Perth & Kinross	7,609	6,788	2,960	44
Renfrewshire	11,285	9,647	4,850	50
Scottish Borders	6,794	6,220	3,074	49
Shetland Islands	1,634	1,521	1,383	91
South Ayrshire	7,173	6,389	2,336	37
South Lanarkshire	19,207	17,195	7,292	42
Stirling	5,714	4,929	3,425	69
West Dunbartonshire	6,170	5,529	2,514	45
West Lothian	10,336	9,264	5,005	54
Grant Maintained	579	570	150	26

**Table 15: Pupils in education authority secondary schools:  
Percentage of pupils entitled to free school meals, 1997 to 2004  
(National Priorities Indicator 3.1.C)**

	1997	1998	1999	2000	2001	2002	2003	2004
Scotland	17.3	18.0	17.5	17.2	16.7	15.9	16.0	16.2
Aberdeen City	7.4	8.6	10.2	9.2	9.0	8.5	8.3	8.8
Aberdeenshire	4.0	3.8	4.2	4.5	4.8	4.6	4.6	4.8
Angus	6.6	7.7	7.7	7.3	8.0	7.8	8.3	10.5
Argyll & Bute	12.3	10.2	12.9	13.3	11.5	11.1	11.5	9.1
Clackmannanshire	16.5	15.9	19.8	18.5	21.1	17.7	17.4	17.6
Dumfries & Galloway	7.7	9.0	8.6	8.7	8.3	7.5	7.4	6.8
Dundee City	23.3	22.4	20.5	21.9	22.2	21.3	21.2	20.3
East Ayrshire	18.0	17.5	18.9	18.4	18.0	17.5	17.3	15.8
East Dunbartonshire	11.6	11.0	10.3	9.2	9.6	9.1	9.7	9.2
East Lothian	9.0	9.1	12.5	12.6	11.0	11.1	14.1	16.6
East Renfrewshire	10.1	10.6	10.2	10.3	9.3	9.3	9.6	17.0
Edinburgh, City of <sup>(1)</sup>	20.6	20.9	16.2	17.7	18.2	17.3	17.6	17.4
Eilean Siar	10.8	10.6	10.7	9.8	10.0	8.0	7.2	7.9
Falkirk	15.1	14.3	14.5	14.1	14.8	15.9	15.0	14.8
Fife	14.3	14.9	14.9	14.6	13.7	13.0	14.7	18.8
Glasgow City	37.6	44.3	40.7	39.9	39.0	37.8	36.2	35.4
Highland	12.6	10.7	10.1	11.7	12.1	11.5	10.5	10.5
Inverclyde	21.1	23.2	22.5	22.2	20.9	20.0	20.0	19.9
Midlothian	9.5	12.9	13.0	14.6	10.9	11.5	11.9	11.4
Moray	6.3	6.8	6.7	7.2	7.4	7.0	6.9	7.6
North Ayrshire	22.5	22.6	22.2	22.8	21.9	21.2	22.3	21.5
North Lanarkshire	22.1	22.9	23.2	22.8	22.1	20.5	18.9	18.2
Orkney Islands	6.6	5.9	6.3	6.9	11.3	11.7	13.0	14.5
Perth & Kinross	5.0	5.7	5.5	6.3	5.9	5.9	5.8	5.8
Renfrewshire	31.9	32.6	32.5	21.6	20.4	20.0	19.9	18.7
Scottish Borders	4.4	4.8	5.6	6.3	6.3	5.9	5.1	5.6
Shetland Islands	7.1	6.0	5.8	6.2	6.4	5.0	5.7	4.8
South Ayrshire	13.1	13.0	13.0	14.1	13.2	12.4	12.2	14.3
South Lanarkshire	19.4	19.3	18.7	18.8	17.9	17.5	17.7	16.9
Stirling	12.9	13.8	14.6	14.9	13.5	12.4	12.3	12.1
West Dunbartonshire	26.6	27.4	28.7	28.4	25.5	23.4	25.1	26.8
West Lothian	17.1	16.3	12.9	14.1	12.0	12.6	15.6	15.7
Grant Maintained <sup>(2)</sup>	<i>n/a</i>	<i>n/a</i>	<i>n/a</i>	<i>n/a</i>	<i>n/a</i>	<i>n/a</i>	<i>n/a</i>	*

(1) The number of pupils entitled to free meals in Edinburgh was unavailable, so figures were estimated. See background note 3 for further information.

(2) Grant maintained schools were previously included within Glasgow

**Table 16: Pupils in education authority secondary schools:  
Percentage of entitled pupils taking free school meals, 1997 to 2004  
(National Priorities Indicator 3.1.C)**

	1997	1998	1999	2000	2001	2002	2003	2004
Scotland	56.7	53.5	56.7	61.2	59.3	59.9	57.2	55.9
Aberdeen City	56.6	64.6	60.0	75.4	70.0	73.5	69.9	61.1
Aberdeenshire	89.8	81.8	79.4	87.6	79.3	61.2	59.0	61.7
Angus	66.9	63.6	62.9	77.8	77.1	68.3	74.2	59.1
Argyll & Bute	61.6	66.6	64.0	65.0	59.3	61.1	65.8	65.2
Clackmannanshire	63.8	67.1	66.4	73.8	54.0	56.7	51.2	45.7
Dumfries & Galloway	81.8	71.9	77.0	81.6	78.5	73.9	78.5	77.5
Dundee City	42.5	43.9	47.4	48.8	45.4	50.0	45.0	42.4
East Ayrshire	63.9	71.8	62.6	68.2	64.2	65.3	65.6	66.9
East Dunbartonshire	55.1	58.7	66.3	69.3	63.9	64.3	56.0	49.1
East Lothian	52.2	54.4	39.6	47.4	45.9	46.1	40.4	32.9
East Renfrewshire	71.4	66.2	64.9	64.4	71.2	69.2	60.6	57.2
Edinburgh, City of <sup>(1)</sup>	49.6	56.6	68.7	64.7	57.6	59.7	55.9	55.4
Eilean Siar	76.1	75.9	74.8	73.3	69.6	72.7	64.5	67.8
Falkirk	58.4	62.3	65.0	67.0	63.7	69.4	74.5	72.5
Fife	66.7	63.7	64.6	65.1	66.5	65.2	56.2	47.1
Glasgow City	55.6	39.9	51.3	58.4	57.4	59.3	52.5	56.7
Highland	63.8	64.7	64.0	52.0	51.5	47.4	52.7	60.1
Inverclyde	65.7	62.4	60.2	62.6	53.8	63.1	59.3	56.1
Midlothian	63.9	55.7	52.8	47.7	65.3	52.5	50.2	52.9
Moray	69.5	65.2	66.2	63.5	66.2	66.8	70.2	59.8
North Ayrshire	67.5	71.4	70.7	74.8	73.0	72.1	66.4	63.6
North Lanarkshire	53.9	49.8	49.0	54.2	53.5	56.6	60.5	61.9
Orkney Islands	64.9	66.7	72.9	67.4	80.1	70.1	69.4	76.8
Perth & Kinross	65.7	68.4	74.6	71.6	75.6	80.7	78.0	74.9
Renfrewshire	30.5	31.0	29.5	51.5	51.1	50.0	54.2	52.9
Scottish Borders	70.0	76.0	61.0	70.3	67.0	64.4	74.6	67.4
Shetland Islands	71.4	81.9	71.1	90.9	74.8	73.4	68.8	81.0
South Ayrshire	67.5	67.4	58.4	64.7	64.0	69.0	69.3	56.1
South Lanarkshire	51.1	51.0	55.8	53.7	49.3	48.8	45.0	44.6
Stirling	56.1	54.6	56.2	53.9	60.8	59.3	54.0	57.3
West Dunbartonshire	72.4	69.4	69.0	72.5	64.6	63.3	67.1	52.8
West Lothian	54.3	58.0	65.4	59.0	66.7	63.0	54.2	53.4
Grant Maintained <sup>(2)</sup>	<i>n/a</i>	<i>n/a</i>	<i>n/a</i>	<i>n/a</i>	<i>n/a</i>	<i>n/a</i>	<i>n/a</i>	100.0

(1) The number of pupils entitled to free meals in Edinburgh was unavailable, so figures were estimated. See background note 3 for further information.

(2) Grant maintained schools were previously included within Glasgow

**Table 17: Pupils in education authority secondary schools:  
Percentage of pupils present taking school meals (free or purchased),  
1997 to 2004**

	1997	1998	1999	2000	2001	2002	2003	2004
Scotland	40.0	43.3	44.7	47.0	48.5	50.3	51.2	48.8
Aberdeen City	44.0	43.5	47.7	49.5	50.5	55.0	48.8	54.8
Aberdeenshire	23.4	35.5	33.4	39.3	40.8	44.0	45.8	45.2
Angus	30.9	37.8	30.4	36.4	54.0	61.0	54.7	47.0
Argyll & Bute	56.1	45.5	54.4	64.6	64.9	56.2	65.9	58.8
Clackmannanshire	21.6	43.1	43.6	40.5	42.6	40.8	44.9	37.1
Dumfries & Galloway	51.7	60.5	60.1	63.3	69.4	69.2	61.6	54.0
Dundee City	41.8	41.8	43.1	41.2	40.9	42.8	47.4	27.4
East Ayrshire	41.4	43.7	40.7	43.8	37.3	42.9	41.5	45.0
East Dunbartonshire	29.0	39.8	43.1	49.4	47.9	51.5	46.3	41.1
East Lothian	19.5	24.7	22.0	27.2	32.2	32.1	28.5	33.7
East Renfrewshire	38.0	42.5	56.6	45.9	51.9	50.8	59.6	55.7
Edinburgh, City of	38.8	34.1	34.3	34.4	33.1	31.3	31.9	34.1
Eilean Siar	56.4	52.9	56.2	53.5	53.4	54.7	50.7	60.7
Falkirk	41.8	42.8	47.4	48.3	50.2	50.8	50.8	52.4
Fife	47.8	53.2	56.8	53.1	53.9	64.5	57.3	56.3
Glasgow City	46.2	41.1	47.7	51.8	49.8	48.2	49.4	46.4
Highland	49.0	53.2	51.2	52.3	49.9	46.7	68.5	70.6
Inverclyde	46.4	47.7	58.2	57.6	50.8	56.7	55.8	48.0
Midlothian	27.0	36.2	36.7	53.9	56.5	67.5	70.2	72.1
Moray	32.2	37.5	34.8	34.3	31.9	37.0	39.2	42.4
North Ayrshire	45.5	43.4	48.1	50.7	47.9	43.8	44.1	43.1
North Lanarkshire	32.9	36.3	33.9	36.7	42.5	53.5	54.7	50.3
Orkney Islands	69.9	66.2	74.2	70.7	64.5	69.6	70.3	63.5
Perth & Kinross	40.5	38.8	38.0	38.9	41.8	51.7	49.7	43.6
Renfrewshire	30.0	28.6	37.4	51.2	55.3	47.2	58.6	50.3
Scottish Borders	33.6	34.5	37.9	40.3	50.1	38.6	44.7	49.4
Shetland Islands	80.2	89.7	87.4	84.5	89.7	89.2	96.8	90.9
South Ayrshire	29.2	40.9	47.8	45.4	45.6	50.6	57.1	36.6
South Lanarkshire	39.8	48.6	48.2	48.3	47.9	42.7	38.7	42.4
Stirling	48.7	64.9	40.2	63.8	67.9	71.8	69.3	69.5
West Dunbartonshire	43.4	55.5	58.3	46.3	56.1	56.4	56.3	45.5
West Lothian	45.2	44.3	41.9	43.7	49.9	53.1	53.5	54.0
Grant Maintained	<i>n/a</i>	<i>n/a</i>	<i>n/a</i>	<i>n/a</i>	<i>n/a</i>	<i>n/a</i>	<i>n/a</i>	26.3

**Table 18: Education authority primary schools with an anonymised system, drinking water and free fruit, 2004<sup>(1)</sup>**

	Anonymised system for recipients of free school meals		Drinking water <sup>(2)</sup>		Free fruit for P1 and P2 pupils <sup>(2)</sup>	
	Number of schools	%	Number of schools	%	Number of schools	%
Scotland	497	22	1,772	79	2,210	99
Aberdeen City	51	91	56	100	56	100
Aberdeenshire	111	72	86	55	154	99
Angus	-	-	60	100	60	100
Argyll & Bute	26	33	60	74	70	86
Clackmannanshire	19	100	18	95	19	100
Dumfries & Galloway	-	-	110	100	110	100
Dundee City	41	100	41	100	41	100
East Ayrshire	-	-	28	60	46	98
East Dunbartonshire	10	27	37	100	37	100
East Lothian	-	-	15	43	32	91
East Renfrewshire	-	-	22	92	24	100
Edinburgh, City of	-	-	46	47	98	100
Eilean Siar	-	-	-	-	39	100
Falkirk	48	100	48	100	48	100
Fife	51	35	139	96	144	99
Glasgow City	7	4	154	78	195	99
Highland	4	2	82	45	182	99
Inverclyde	-	-	30	94	31	97
Midlothian	-	-	36	100	36	100
Moray	11	24	39	85	46	100
North Ayrshire	1	2	36	68	53	100
North Lanarkshire	4	3	131	100	131	100
Orkney Islands	17	81	21	100	21	100
Perth & Kinross	-	-	77	100	77	100
Renfrewshire	1	2	49	96	51	100
Scottish Borders	9	13	24	34	69	97
Shetland Islands	31	100	32	100	32	100
South Ayrshire	10	22	45	100	45	100
South Lanarkshire	5	4	124	100	124	100
Stirling	36	84	37	86	43	100
West Dunbartonshire	4	11	31	89	31	89
West Lothian	-	-	57	86	65	98
Grant Maintained	-	-	1	100	-	-

(1) See background note 5 for definitions

(2) Figures include schools in which no pupils took a school meal

**Table 19: Education authority secondary schools with an anonymised system and drinking water, 2004<sup>(1)</sup>**

	Anonymised system for recipients of free school meals		Drinking water	
	Number of schools	%	Number of schools	%
Scotland	181	47	269	70
Aberdeen City	3	25	10	83
Aberdeenshire	2	12	17	100
Angus	8	100	8	100
Argyll & Bute	4	40	6	60
Clackmannanshire	1	33	3	100
Dumfries & Galloway	1	6	16	100
Dundee City	10	100	10	100
East Ayrshire	-	-	3	33
East Dunbartonshire	9	100	9	100
East Lothian	-	-	3	50
East Renfrewshire	1	14	7	100
Edinburgh, City of	3	13	9	39
Eilean Siar	-	-	10	91
Falkirk	8	100	8	100
Fife	4	21	14	74
Glasgow City	29	100	22	76
Highland	22	76	9	31
Inverclyde	3	38	7	88
Midlothian	2	33	6	100
Moray	-	-	8	100
North Ayrshire	9	90	4	40
North Lanarkshire	14	54	26	100
Orkney Islands	-	-	6	100
Perth & Kinross	6	60	10	100
Renfrewshire	2	17	-	-
Scottish Borders	-	-	3	33
Shetland Islands	9	100	9	100
South Ayrshire	9	100	9	100
South Lanarkshire	6	29	-	-
Stirling	7	100	4	57
West Dunbartonshire	-	-	3	43
West Lothian	9	82	9	82
Grant Maintained	-	-	1	100

(1) See background note 5 for definitions

**Table 20: Education authority special schools with drinking water, 2004<sup>(1)</sup>**

	Drinking water <sup>(2)</sup>	
	Number of schools	%
Scotland	136	83
Aberdeen City	6	100
Aberdeenshire	4	100
Angus	n/a	
Argyll & Bute	2	67
Clackmannanshire	4	100
Dumfries & Galloway	3	100
Dundee City	1	100
East Ayrshire	7	100
East Dunbartonshire	3	100
East Lothian	n/a	
East Renfrewshire	1	100
Edinburgh, City of	4	29
Eilean Siar	n/a	
Falkirk	6	100
Fife	7	100
Glasgow City	31	79
Highland	4	67
Inverclyde	4	100
Midlothian	2	100
Moray	n/a	
North Ayrshire	2	50
North Lanarkshire	11	100
Orkney Islands	1	100
Perth & Kinross	2	100
Renfrewshire	4	100
Scottish Borders	1	100
Shetland Islands	n/a	
South Ayrshire	-	-
South Lanarkshire	9	100
Stirling	3	75
West Dunbartonshire	2	100
West Lothian	6	100
Grant Maintained	6	86

n/a: there are no special schools in some local authorities

(1) See background note 5 for definitions

(2) Figures include schools in which no pupils took a school meal

**Table 21: The price of a free meal credit (£), 2004**

	Primary	Secondary	Special <sup>(1)</sup>
Aberdeen City	1.54	1.62	1.97
Aberdeenshire	1.45	1.93	1.45
Angus	1.40	1.50	0.00
Argyll & Bute	1.40	1.40	1.40
Clackmannanshire	1.50	1.50	1.50
Dumfries & Galloway	1.25	1.30	2.80
Dundee City	1.50	1.55	1.50 / 2.50
East Ayrshire	1.43	1.43	1.43
East Dunbartonshire	1.40	1.40	1.40
East Lothian	1.40	1.55	0.00
East Renfrewshire	1.35	1.40	1.40
Edinburgh, City of	1.35	1.85	1.35
Eilean Siar	1.50	1.50	0.00
Falkirk	1.35	1.35	1.35
Fife	1.35	1.35	1.35
Glasgow City	1.15	1.15	1.15
Highland	1.45	1.45	1.45
Inverclyde	1.54	1.54	1.54
Midlothian	1.30	1.40	1.30 / 1.40
Moray	1.60	1.70	0.00
North Ayrshire	1.50	1.50	1.50
North Lanarkshire	1.45	1.50	1.50
Orkney Islands	1.20	1.30	1.20
Perth & Kinross	1.40	1.45	2.15
Renfrewshire	1.35	1.35	1.35
Scottish Borders	1.50	1.60	0.00
Shetland Islands	1.10	1.20	1.10 / 1.20
South Ayrshire	1.40	1.40	1.40
South Lanarkshire	1.20	1.20	1.20
Stirling	1.40	1.40	1.40
West Dunbartonshire	1.37	1.37	1.37
West Lothian	1.35	1.45	1.45

(1) In some authorities there was a different value for primary and secondary aged pupils