

SCOTTISH EXECUTIVE
Office of the Chief Economic Adviser

Benefits and Tax Credits in Scotland

Report for August 2003

ISSUED February 2004

A Scottish Executive National Statistics Publication

CONTENTS¹

	Page
INTRODUCTION	4
SUMMARY	5
SECTION A: CLIENT GROUP ANALYSIS	7
Table A1 Working Age Claimants of Key Benefits by Statistical Group and Local Authority	9
Table A2 Children of Claimants of Key Benefits by Local Authority	11
Table A3 Population over State Pension Age Claimants of Key Benefits by Statistical Group and Local Authority, May 2003	13
SECTION B: INCOME SUPPORT	15
Table B1 Claimants of IS by Statistical Group and Local Authority	17
Table B2 Claimants of IS by Age, Sex and Family Type	18
Table B3 Claimants of IS by Duration of Current Claim and Statistical Group	18
Table B4 Partners and Dependants of IS Claimants	19
Table B5 & Chart B1 Claimants of IS by Statistical Group, August 1998 to August 2003	19
SECTION C: JOBSEEKER'S ALLOWANCE	20
Table C1 Claimants of JSA by Local Authority	22
Table C2 Claimants of JSA by Benefit Entitlement and Duration of Claim	23
Table C3 Claimants of JSA by Sex, Age and Duration of Current Claim	23
Table C4 Claimants of JSA by Age and Benefit Entitlement	24
Table C5 & Chart C1 Claimants of JSA by Benefit Entitlement, August 1998 to August 2003	24
SECTION D: INCAPACITY BENEFIT	25
Table D1 Claimants and Beneficiaries of IB by Local Authority	28
Table D2 Claimants and Beneficiaries of IB by Age and Sex	29
Table D3 Claimants and Beneficiaries of IB by Rate of Benefit	29
Table D4 Claimants of IB by Age and Duration of Benefit	29
Table D5 & Chart D1 Claimants of IB by Rate of Benefit, August 1998 to August 2003	30
SECTION E: SEVERE DISABLEMENT ALLOWANCE	31
Table E1 Claimants and Beneficiaries of SDA by Local Authority	33
Table E2 Claimants and Beneficiaries of SDA by Age and Sex	34

¹ Tables relate to August 2003 unless otherwise stated.

SECTION F:	DISABILITY LIVING ALLOWANCE	35
Table F1	Allowances of DLA by Local Authority	36
Table F2	Allowances and Awards of DLA by Age and Sex	36
Table F3	Allowances of DLA by Disability	37
Table F4	Awards of DLA by Disability	37
Table F5 & Chart F1	Allowances of Disability Living Allowance by Disability, August 1998 to August 2003	38 39
SECTION G:	ATTENDANCE ALLOWANCE	340
Table G1	Allowances of AA by Local Authority	42
Table G2	Allowances and Awards of AA by Age and Sex	43
Table G3	Allowances of AA by Disability and Rate	43
Table G4	Awards of AA by Disability and Rate	43
Table G5 & Chart G1	Allowances of AA by Rate, August 1998 to August 2003	44 44
SECTION H:	CARER'S ALLOWANCE	45
Table H1	Allowances of CA by Local Authority	47
SECTION I:	COUNCIL TAX BENEFIT	48
Table I1	Recipients of CTB, with or without IS/JSA(IB) by Local Authority	50
Table I2 & Chart I1	Recipients of CTB, with or without IS/JSA(IB), August 1998 to August 2003	51 51
SECTION J:	HOUSING BENEFIT	52
Table J1	Recipients of HB, with or without IS/JSA(IB) by Local Authority	54
Table J2 & Chart J1	Housing Benefit Recipients, with or without IS/JSA(IB), August 1998 to August 2003	55 55
SECTION K:	TAX CREDITS	56
Table K1	Families with CTC or WTC award, or with children and receiving out-of-work benefits, July 2003, October 2003, January 2004	58
Table K2	In-work families with awards; recipients and their children, January 2004	58
Table K3	In-work families with CTC or WTC awards by Local Authority, January 2004	59
GLOSSARY OF CONVENTIONS AND TERMS		60
ANNEX 1:	TECHNICAL DETAILS	61
ANNEX 2:	SCOTTISH EXECUTIVE STATISTICAL SERVICES	62

INTRODUCTION

This report on benefits and tax credits in Scotland has been developed in consultation with the main users of benefits data within the Scottish Executive, and aims to provide summary information on benefit recipients in Scotland across a range of benefits and tax credits.

Figures on benefits have been provided by and published with the permission of the Department for Work and Pensions. Figures on tax credits have been provided by the Inland Revenue.

The figures presented are the latest available at the time of publishing: August 2003 for benefits and January 2004 for tax credits. This is the first time that this report has included information on the Child and Working Tax Credits. The headline figures for Scotland for both benefits and tax credits for these dates have already been published by DWP and Inland Revenue.

Benefit figures in this, and future reports are affected by the introduction of Child Tax Credit (CTC) in April 2003. (See Annex 1 for details). **It is therefore advised that customers exercise caution when performing year on year comparisons, or when comparing with the previous quarter.**

A series of tables show the number of claimants, allowances, awards etc. made as a percentage of the relevant population. The population estimates used in this report are those as at 30th June 2002; the latest available at the time of publishing.

The last published report entitled "Benefits and Tax Credits in Scotland: Report for February 2003 can be found at <http://www.scotland.gov.uk/library5/social/taxcred03.pdf>

Any further views or suggestions for changes to future editions are welcome. Please contact Julie Bright (☎ 0131 244 2583, e-mail julie.bright@scotland.gsi.gov.uk) with any comments.

Scottish Executive
Office of the Permanent Secretary
OCEA Statistics
February 2004

SUMMARY

Current situation

Benefits

In August 2003, 554 thousand people of working age in Scotland were claiming a key benefit; 18% of the working-age population. There were 223 thousand children aged under 16 of claimants of key benefits (23% of all under 16s) and 935.9 thousand pensioners (99% of all pensioners) were claiming. (Key Benefits are Jobseekers Allowance (JSA), Incapacity Benefit (IB), Severe Disablement Allowance, Disability Living Allowance, Income Support, National Insurance credits only (through JSA or IB) and State Pension.)

432.9 thousand people were claiming Income Support (11% of the adult population) and 104.2 thousand were claiming Jobseeker's Allowance (3% of the working age population).

There were 185.2 thousand Incapacity Benefit recipients (6% of the working-age population), 281.2 thousand receiving Disability Living Allowance (6% of the population), 133.8 thousand receiving Attendance Allowance (16% of over 65s), 36.4 thousand were receiving Severe Disablement Allowance (0.9% of the adult population) and 40,600 (1% of all adults) were receiving Carers Allowance.

523.9 thousand households were receiving Council Tax Benefit and 434.1 thousand were receiving Housing Benefit, respectively 24% and 20% of all households.

Tax Credits

There were 0.5 million families with Child Tax Credit or Working Tax Credit awards, or with children and receiving out-of-work benefits at January 2004 (these out-of-work families with children are due to migrate to Child Tax Credit during 2004/05). 404,500 of these families were in work and receiving tax credit payments.

There were 381.4 thousand families receiving Child Tax Credit, 203.4 thousand with awards above the family element. There were 145.1 thousand recipients of both Working Tax Credit and Child Tax Credit and 23.2 thousand receiving Working Tax Credit only.

28.5 thousand families were benefiting from the childcare element at 5 January 2004, with an average award of £46.12 a week.

Changes over the last 5 years

The total number of **Income Support** claimants in Scotland has increased by 7% in the last five years, from 403.4 thousand claimants at August 1998 to 432.9 thousand at August 2003. Increases in the number of claimants who were disabled or aged over 60 (Minimum Income Guarantee) account for the overall increase, whilst the number of lone parent claimants fell from 90.2 thousand in August 1998 to 76.4 thousand at August 2003. This fall in lone parent claimants fits intuitively with job entries via New Deal and the associated increase in the lone parent employment rate.

The number of claimants of **Jobseeker's Allowance** has been falling steadily, from 149.5 thousand claimants at August 1998 to 104.2 thousand at August 2003, a 30% fall. This fits alongside the fall in the number of unemployed over this period.

The total number of **Incapacity Benefit** claimants has remained fairly steady for the past five years. There has been a decrease in the number of long term claimants and a corresponding increase in the number receiving National Insurance Credits only.

The number of recipients of **Attendance Allowance** has increased by 7% from 124.8 thousand at August 1998 to 133.8 thousand at August 2003 (the proportion though remained at 16% over the period as the total numbers of over 65s also increased). A larger proportion of these recipients (56% at August 2003) now receive the higher rate than at August 1998 (47%). The number of recipients of **Disability Living Allowance** has increased by 24% over the last four years, from 226.2 thousand at August 1998 to 281.2 thousand at August 2003.

The number of recipients of **Housing Benefit** has fallen steadily over the past few years, from 515.1 thousand at August 1998 to 434.1 thousand at August 2003, a fall of 16%. Similarly, the number of recipients of **Council Tax Benefit** at August 2003 (523.9 thousand) was 12% lower than at August 1998 (597.6 thousand).

Local Authorities

The rates of **working age** claimants of key benefits are **highest** in Glasgow City where 29% of the working aged population are claimants, followed by Inverclyde, North Lanarkshire, North Ayrshire, East Ayrshire, West Dunbartonshire, Renfrewshire and Dundee City (all between 21% and 26%). The **lowest** rates are found in Orkney, Aberdeenshire, East Dunbartonshire, East Renfrewshire, Moray, Perth and Kinross and Shetland, at between 8% and 11%.

Comparison with Great Britain

The rate of benefit claimants in Scotland is slightly higher than for GB as a whole for all key benefits, except for Jobseekers Allowance where the rates are the same.

SECTION A: CLIENT GROUP ANALYSIS

Working age

Table A1 presents numbers and proportions of working age people who are in receipt of **one or more** of a range of key benefits. The range of benefits included in this analysis are: Jobseeker's Allowance (JSA); Incapacity Benefit (IB); Severe Disablement Allowance (SDA); Disability Living Allowance (DLA); and Income Support (IS).

The analysis is produced on the basis of **statistical group**, which is defined as follows:

Unemployed	Claimant of JSA
Sick/Disabled	Claimant of at least one of: IB, SDA, DLA or IS with a disability premium
Lone Parent	Single people with children on IS and not receiving a disability related premium
Other	IS claimant not in other groups, e.g. carers, asylum seekers, pensioners (Minimum Income Guarantee (MIG))

In "Client Group Analysis", claimants of key benefits have been divided into groups based mainly on the type of benefit they receive. This gives an indication of the main reason why they are claiming a benefit.

Children

Figures in these tables are affected by the introduction of Child Tax Credit (CTC) in April 2003. As CTC is available to nearly all families with children, it has been possible to add additional information about children not available from the benefit data (e.g. children of DLA only claimants, for whom no child information is collected by the benefit system). This has added to the total number of children where we have information at August 2003 compared with previous quarters. As a result, **great care should be taken when making comparisons with earlier quarters**. See Annex 1 for further details.

Pensioners

The **statistical group** analysis for claimants over state pension age is broken down as follows:

Sick/disabled	Claimant receiving one or more of Attendance Allowance (AA), DLA, IB, SDA or receiving MIG and one of the following: <ol style="list-style-type: none">1. Single and aged 60-79 in receipt of a Higher Pensioner Premium (HPP) due to disability;2. In a residential care or nursing home;3. Sick days being recorded;4. Hospitalised or receiving State Pension and one of the following: <ol style="list-style-type: none">1. In hospital2. Receiving Invalidity Allowance (IVA)
Non disabled MIG	MIG claimants not included in the sick/disabled category

State Pension only

State Pension claimants not in other statistical groups

You can obtain further information on the methodology used to carry out Client Group Analysis, and comparable GB figures, for working age claimants, from the following URL address: http://www.dwp.gov.uk/asd/asd1/cga_wa/CGA_WA_Aug03.pdf

The bulletin detailing comparable GB statistics on the number of children and young adult dependants of claimants can be found at the following URL address: http://www.dwp.gov.uk/asd/asd1/cga_famchild/CGA_FC_Aug03.pdf

Comparable figures for pensioners can be found at:

http://www.dwp.gov.uk/asd/asd1/state_pension/cga_statepen_may03.pdf

Main Findings

- In August 2003, 554 thousand people of working age in Scotland were claiming a key benefit, representing 18% of the working age population.
- The proportion ranged from 8% in Orkney to 29% in Glasgow City.
- Almost two thirds (65%) of benefit claimants were in the sick/disabled group – 358.1 thousand people or 11% of the working age population.
- 100.1 thousand people (18% of all working age benefit claimants) were claiming unemployment related benefits; 3% of all working age people.
- There were 73.7 thousand people claiming a key benefit who were in the “lone parent” group; 2% of the working age population.
- There were 223 thousand children aged under 16 of claimants of key benefits. This represents 23% of all children aged under 16.
- There were 935.9 thousand people over state pension age claiming key benefits at May 2003. There were 275.3 thousand in the disabled group and 596.5 thousand receiving state pension only – respectively, 29% and 63% of all pensioners.

A1 Working Age Claimants of Key Benefits² by Statistical Group and Local Authority, August 2003

	All Claimants		Unemployed		Sick/Disabled		Lone Parents		Other	
	000s	% of pop ³	000s	% of pop ³	000s	% of pop ³	000s	% of pop ³	000s	% of pop ³
Scotland	554.0	18	100.1	3	358.1	11	73.7	2	22.1	0.7
Aberdeen City	17.9	13	2.5	2	12.6	9	2.3	2	0.5	0.3
Aberdeenshire	13.7	10	1.6	1	10.2	7	1.4	1	0.5	0.4
Angus	9.2	14	2.2	3	5.4	8	1.4	2	*0.2	*0.3
Argyll and Bute	7.2	13	1.3	2	4.8	9	0.6	1	*0.4	*0.7
Clackmannanshire	5.8	19	1.1	4	3.9	13	0.7	2	*0.1	*0.3
Dumfries and Galloway	12.8	15	2.8	3	8.0	9	1.5	2	0.5	0.6
Dundee City	18.7	21	4.0	4	11.0	12	3.0	3	0.8	0.9
East Ayrshire	15.9	22	3.5	5	9.3	13	2.4	3	0.7	1.0
East Dunbartonshire	6.9	11	1.3	2	4.6	7	0.7	1	*0.3	*0.4
East Lothian	7.8	14	1.0	2	5.4	10	1.1	2	*0.3	*0.5
East Renfrewshire	6.0	11	0.9	2	3.9	7	0.9	2	*0.2	*0.3
Edinburgh, City of	38.4	13	7.2	2	24.5	8	5.3	2	1.4	0.5
Eilean Siar	2.5	16	0.5	3	1.5	10	*0.2	*1	*0.2	*1.6
Falkirk	14.7	16	2.7	3	9.6	11	1.9	2	0.6	0.6
Fife	36.7	17	8.8	4	21.8	10	4.7	2	1.4	0.6
Glasgow City	107.1	29	16.6	4	69.4	19	15.9	4	5.2	1.4
Highland	17.3	14	3.5	3	11.2	9	2.0	2	0.5	0.4
Inverclyde	13.3	26	2.7	5	8.1	16	1.8	4	0.7	1.4
Midlothian	7.0	14	0.9	2	4.8	10	1.0	2	*0.2	*0.5
Moray	5.6	11	1.3	2	3.6	7	0.6	1	*0.2	*0.3
North Ayrshire	18.5	22	4.3	5	10.9	13	2.5	3	0.8	0.9
North Lanarkshire	46.4	23	7.4	4	31.3	15	5.9	3	1.8	0.9
Orkney Islands	0.9	8	*0.1	*1	0.7	6	*0.1	*1	-	-
Perth and Kinross	8.5	11	1.4	2	5.8	7	1.0	1	*0.3	*0.4

Source: Department for Work and Pensions, IAD Information Centre, August 2003

² Key benefits are Jobseeker's Allowance (JSA), Incapacity Benefit (IB), Severe Disablement Allowance, Disability Living Allowance, Income Support and National Insurance credits only (through JSA or IB).

³ Based on population aged 16-59/64.

A1 Working Age Claimants of Key Benefits² by Statistical Group and Local Authority: Scotland, August 2003 (cont.)

	All Claimants		Unemployed		Sick and Disabled		Lone Parents		Other	
	000s	% of pop ³	000s	% of pop ³	000s	% of pop ³	000s	% of pop ³	000s	% of pop ³
Renfrewshire	22.3	21	3.8	4	14.5	13	3.3	3	0.7	0.6
Scottish Borders	7.6	12	1.5	2	5.0	8	0.9	1	*0.3	*0.4
Shetland Islands	1.4	11	*0.4	*3	0.9	7	*0.1	*1	*0.1	*0.4
South Ayrshire	11.1	17	2.4	4	7.1	11	1.1	2	*0.4	*0.6
South Lanarkshire	36.2	19	5.7	3	24.9	13	4.1	2	1.5	0.8
Stirling	7.6	14	1.3	3	5.2	10	0.9	2	*0.2	*0.4
West Dunbartonshire	12.9	22	2.7	5	7.7	13	1.8	3	0.7	1.2
West Lothian	16.3	16	2.6	3	10.6	10	2.5	2	0.5	0.5

Source: Department for Work and Pensions, IAD Information Centre, August 2003

² Key benefits are Jobseeker's Allowance (JSA), Incapacity Benefit (IB), Severe Disablement Allowance, Disability Living Allowance, Income Support and National Insurance credits only (through JSA or IB).

³ Based on population aged 16-59/64.

A2 Children (aged under 16)⁴ of Claimants of Key Benefits by Local Authority, Scotland, August 2003

	Claimants of Key Benefits	
	000s	% of pop ⁵
Scotland	223.0	23
Aberdeen City	6.1	18
Aberdeenshire	5.7	12
Angus	4.3	21
Argyll & Bute	2.1	12
Clackmannanshire	2.8	28
Dumfries & Galloway	4.6	17
Dundee City	7.8	31
East Ayrshire	6.7	29
East Dunbartonshire	2.8	13
East Lothian	3.5	19
East Renfrewshire	2.6	14
Edinburgh, City of	14.8	20
Eilean Siar	1.2	25
Falkirk	6.5	23
Fife	15.5	23
Glasgow City	43.5	42
Highland	7.4	18
Inverclyde	5.2	33
Midlothian	3.0	18
Moray	2.3	13
North Ayrshire	7.3	27
North Lanarkshire	18.8	29
Orkney Islands	0.5	14

Source: Department for Work and Pensions, IAD Information Centre, August 2003

⁴ Children aged under 16 for whom additional benefit allowance is payable and/or CTC payable (see note on children on page 5).

⁵ Based on population aged under 16.

A2 Children (aged under 16)⁴ of Claimants of Key Benefits by Local Authority, Scotland, August 2003 (cont.)

	All Claimants / Recipients	
	000s	% of pop⁵
Perthshire & Kinross	3.0	12
Renfrewshire	8.4	25
Scottish Borders	2.8	14
Shetland Islands	*0.3	*6
South Ayrshire	3.3	17
South Lanarkshire	14.4	24
Stirling	3.1	19
West Dunbartonshire	4.8	26
West Lothian	7.9	23

Source: Department for Work and Pensions, IAD Information Centre, August 2003

⁴ Children aged under 16 for whom additional benefit allowance is payable and/or CTC payable (see note on children on page 5).

⁵ Based on population aged under 16.

A3 Population over State Pension Age Claimants of Key Benefits by Statistical Group and Local Authority, Scotland, May 2003

	All Claimants		Sick / Disabled		Non Disabled Minimum Income Guarantee (MIG) ⁶		State Pension Only	
	000s	% of pop ^{7 8}	000s	% of pop ⁶	000s	% of pop ⁶	000s	% of pop ⁶
Scotland	935.9	99	275.3	29	64.0	7	596.5	63
Aberdeen City	36.4	98	9.6	26	2.2	6	24.7	66
Aberdeenshire	39.3	100	8.5	22	2.1	5	28.8	74
Angus	22.1	97	5.3	23	1.1	5	15.7	69
Argyll & Bute	18.0	90	4.3	22	1.3	7	12.3	62
Clackmannanshire	7.8	93	2.2	27	*0.4	*5	5.1	61
Dumfries & Galloway	32.9	97	7.7	23	2.2	6	22.9	68
Dundee City	28.9	97	9.7	33	2.4	8	16.7	56
East Ayrshire	22.8	99	7.4	32	1.8	8	13.5	59
East Dunbartonshire	19.8	97	5.1	25	0.9	4	13.8	67
East Lothian	18.3	100	5.0	28	1.1	6	12.2	67
East Renfrewshire	17.3	100	4.1	24	0.6	4	12.5	75
Edinburgh, City of	75.4	95	17.3	22	4.2	5	54.0	68
Eilean Siar	5.1	84	1.3	21	0.8	14	3.0	49
Falkirk	26.4	99	8.0	30	1.9	7	16.5	62
Fife	66.4	99	17.8	27	3.8	6	44.8	67
Glasgow City	100.6	97	43.7	42	10.1	10	46.7	45
Highland	42.4	100	8.5	21	3.3	8	30.6	74
Inverclyde	17.1	100	5.6	34	1.3	8	10.2	63
Midlothian	14.1	98	3.9	27	0.7	5	9.5	66
Moray	16.3	97	3.2	19	1.1	7	12.0	72
North Ayrshire	25.9	99	8.1	31	2.0	8	15.8	60
North Lanarkshire	52.4	98	22.1	41	3.8	7	26.5	49

Source: Department for Work and Pensions, IAD Information Centre, May 2003

⁶ Over 60s receiving Income Support but also claiming AA, DLA, IB or SDA are included in the Sick/Disabled group, therefore these numbers differ from those in table G2 (see page 7 for further details).

⁷ Based on population 60/65+

⁸ Proportions shown as 100% may actually have been calculated as slightly higher than 100%, i.e. the benefit caseload is apparently at least as high, if not higher, than the corresponding population figure. This can occur because of imperfections associated with both data sources. In particular, the latest population estimates available are around one year behind the benefit data.

A3 Population over State Pension Age Claimants of Key Benefits by Statistical Group and Local Authority, Scotland, May 2003 (cont.)

	All Claimants		Sick / Disabled		Non Disabled Minimum Income Guarantee (MIG) ⁶		State Pension Only	
	000s	% of pop ^{7,8}	000s	% of pop ⁷	000s	% of pop ⁷	000s	% of pop ⁷
Orkney Islands	4.3	100	0.8	20	*0.4	*10	3.2	81
Perthshire & Kinross	30.0	100	5.9	20	1.8	6	22.3	76
Renfrewshire	32.1	100	10.8	34	2.2	7	19.1	60
Scottish Borders	23.3	99	4.5	19	1.6	7	17.2	73
Shetland Islands	3.6	98	0.8	21	*0.4	*11	2.4	66
South Ayrshire	24.6	98	7.0	28	1.3	5	16.3	65
South Lanarkshire	56.0	100	18.9	34	3.6	6	33.6	61
Stirling	16.2	100	4.2	26	0.7	4	11.3	70
West Dunbartonshire	17.5	100	5.9	34	1.7	10	9.9	57
West Lothian	22.8	100	7.9	35	1.3	6	13.6	60

Source: Department for Work and Pensions, IAD Information Centre, May 2003.

⁶ Over 60s receiving Income Support but also claiming AA, DLA, IB or SDA are included in the Sick/Disabled group therefore these numbers differ from those in table G2 (see page 7 for further details).

⁷ Based on population 60/65+

⁸ Proportions shown as 100% may actually have been calculated as slightly higher than 100%, i.e. the benefit caseload is apparently at least as high, if not higher, than the corresponding population figure. This can occur because of imperfections associated with both data sources. In particular, the latest population estimates available are around one year behind the benefit data.

SECTION B: INCOME SUPPORT

IS Quarterly Statistical Enquiry

Income Support is a **non-contributory, income assessed** benefit. It is intended to help people on low incomes who do not have to be available for employment. It can normally be claimed by people who are: aged 16 or over; working under 16 hours (and with a partner working under 24 hours); not required to be available for full-time employment; and in receipt of insufficient income to meet prescribed needs. The main types of people who receive it are pensioners, lone parents, the long and short-term sick, people with disabilities and other special groups (e.g. carers).

The amount of IS which a claimant can receive depends mainly upon their age; whether they have a partner and dependent children; whether they have special needs such as a disability or caring responsibilities (known as premia); and whether they have liabilities for certain types of housing costs, such as mortgage interest payments. The maximum amount which a claimant can receive is normally reduced by income from other types of benefits or other sources.

Claimants who are in possession of capital and/or savings with a net value of over £8,000 are not entitled to Income Support. Savings of £3,000 or less do not affect entitlement. Above this level a notional income of £1 is assumed for every £250 or part thereof between £3,000 and £8,000. Actual income from capital is ignored. From April 2001, the limits for people aged 60 or over increased – the lower capital limit increased from £3,000 to £6,000 and the upper limit increased from £8,000 to £12,000. For people in a residential care or nursing home, the upper and lower limits are £16,000 and £10,000 respectively; (there are some exceptions to this rule).

Prior to October 1996 people who were unemployed or on a government training scheme could also claim IS. On 7 October 1996 Jobseeker's Allowance (JSA) was introduced to replace Unemployment Benefit and IS for unemployed people and brought them together in a unified benefit. It is intended for people who are available for and actively seeking employment, including those in remunerative work for less than 16 hours a week on average, and for people on a government training scheme.

You can obtain further information on Income Support from the following URL address: <http://www.jobcentreplus.gov.uk/cms.asp?Page=/Home/Customers/WorkingAgeBenefits/493>

The bulletin detailing comparable GB statistics on Income Support can be found at the following URL address: http://www.dwp.gov.uk/asd/asd1/is/is_quarterly_aug03.asp

Main Findings

- 432.9 thousand people were claiming Income Support in Scotland as at August 2003; 11% of the adult population (aged 16 or over) and slightly higher than the equivalent rate of 9% for Great Britain as a whole.
- The rate in Glasgow (20%) was almost double the Scottish average, whilst Aberdeenshire, East Dunbartonshire, East Renfrewshire, Moray and Orkney had the lowest rates, at 6% of the adult population.
- 44% of all claimants were aged 60 or over, 18% were lone parents and 31% were disabled.
- 489.2 thousand adults were covered by Income Support either through a direct claim or as a partner of a claimant; 12% of the working age population.
- The majority of claimants were single without dependants (65%).
- 64% (276.8 thousand) of all claimants were women. The vast majority of single parent claimants were female (93%).
- 44% of all claimants had been on Income Support for 5 years and over. This varied with statistical group, with 50% of over 60s and 34% of lone parents claiming for over 5 years.
- There were 56.3 thousand partners of IS claimants and 187.4 thousand child dependants. 28% of child dependants were under 5 whilst 35% were aged between 5 and 10.
- The number of Income Support claimants has increased since 1998, from 403.4 thousand claimants as at August 1998 to 432.9 thousand at August 2003. Increases in the number of claimants who were disabled or aged over 60 (Minimum Income Guarantee) account for the overall increase, whilst the number of lone parent claimants fell over the period (from 90.2 thousand in August 1998 to 76.4 thousand at August 2003).

B1 Claimants of Income Support by Statistical Group and Local Authority: Scotland, August 2003

	All claimants (000s)	Claimants as % of pop aged 16+	Statistical Group		Disabled (000s)	Other (000s)	All claimants and partners (000s)	Claimants and partners as % of pop aged 16+
			Aged 60 or over ⁹ (000s)	Lone parents ¹⁰ (000s)				
Scotland	432.9	11	191.3	76.4	132.4	489.2	489.2	12
Aberdeen City	14.4	8	6.2	2.5	4.4	15.5	15.5	9
Aberdeenshire	11.0	6	5.6	1.5	3.2	12.5	12.5	7
Angus	7.1	8	3.3	1.4	2.0	8.1	8.1	9
Argyll and Bute	6.2	8	3.5	0.7	1.8	7.1	7.1	10
Clackmannanshire	3.4	9	1.2	0.8	1.2	4.1	4.1	11
Dumfries and Galloway	10.6	9	5.7	1.5	2.8	12.5	12.5	10
Dundee City	16.6	14	7.6	3.1	4.6	18.1	18.1	15
East Ayrshire	11.8	12	5.4	2.4	3.0	13.6	13.6	14
East Dunbartonshire	5.1	6	2.7	0.7	1.3	6.0	6.0	7
East Lothian	6.4	9	3.0	1.1	1.9	7.2	7.2	10
East Renfrewshire	4.4	6	2.1	0.9	1.1	5.0	5.0	7
Edinburgh, City of	30.3	8	11.7	5.5	10.6	33.4	33.4	9
Eilean Siar	2.6	12	1.8	*0.2	0.5	3.0	3.0	14
Falkirk	10.6	9	5.0	1.9	2.9	12.3	12.3	10
Fife	23.4	8	9.8	4.9	7.1	26.4	26.4	9
Glasgow City	93.1	20	36.2	16.6	32.9	104.2	104.2	22
Highland	13.8	8	7.2	2.1	3.8	15.8	15.8	9
Inverclyde	9.9	15	4.0	1.9	3.0	10.9	10.9	16
Midlothian	4.5	7	2.0	1.0	1.3	5.1	5.1	8
Moray	4.5	6	2.4	0.6	1.2	5.1	5.1	7
North Ayrshire	13.1	12	5.8	2.6	3.7	14.9	14.9	14
North Lanarkshire	33.4	13	14.0	6.1	10.4	38.1	38.1	15
Orkney Islands	1.0	6	0.7	*0.1	*0.2	1.1	1.1	7
Perth and Kinross	7.6	7	4.2	1.1	1.9	8.6	8.6	8
Renfrewshire	16.8	12	7.2	3.4	5.0	18.9	18.9	14
Scottish Borders	6.3	7	3.5	0.9	1.6	7.4	7.4	8
Shetland Islands	1.2	7	0.8	*0.1	*0.3	1.3	1.3	8
South Ayrshire	8.6	9	4.3	1.2	2.5	9.9	9.9	11
South Lanarkshire	27.2	11	12.7	4.2	8.1	31.6	31.6	13
Stirling	5.1	7	2.4	0.9	1.5	5.8	5.8	8
West Dunbartonshire	10.6	14	4.7	1.9	3.1	11.6	11.6	16
West Lothian	11.9	9	4.9	2.6	3.6	13.9	13.9	11

Source: Department for Work and Pensions, IAD Information Centre, August 2003

⁹ The category 'Aged 60 or over' consists of benefit units where the claimant and/or their partner are aged 60 or over. Therefore this category may include claimants who are aged under 60, but whose partner is aged 60 or over.

¹⁰ Excludes lone parents also in receipt of pensioner or disability premia, who are included in the aged 60 or over, or disabled groups.

B2 Claimants of Income Support by Age, Sex and Family Type: Scotland, August 2003

	Thousands				
	All Claimants	Single without dependants ¹¹	Single with dependants	Couple without dependants	Couple with dependants
All persons	432.9	283.4	93.2	40.9	15.3
Male	156.1	106.7	6.3	31.8	11.3
Under 18	0.6	0.6	-	-	-
18-24	7.5	6.9	*0.2	*0.1	*0.3
25-59	86.1	61.1	5.9	9.3	9.8
60 or over ¹²	61.9	38.1	*0.2	22.4	1.2
Female	276.8	176.7	87.0	9.1	4.0
Under 18	1.4	0.9	*0.4	-	-
18-24	23.0	5.1	17.3	*0.3	*0.3
25-59	124.1	47.7	68.7	4.0	3.6
60 or over ¹²	128.3	123.0	0.5	4.8	-

Source: Department for Work and Pensions, IAD Information Centre, August 2003

B3 Income Support Claimants by Duration of Current Claim and Statistical Group: Scotland, August 2003

Duration	Thousands / Column %s				
	All Claimants	Aged 60 or over ¹³	Lone parents ¹⁴	Disabled	Other
All claimants (Numbers)	432.9	191.3	76.4	132.4	32.8
% under 3 months	5.0	3.3	5.4	2.1	26.4
% 3 to under 6 months	5.2	3.2	7.7	2.5	22.1
% 6 to under 12 months	7.8	6.0	9.9	5.4	23.0
% 1 to under 2 years	11.9	10.5	14.8	13.5	6.4
% 2 to under 3 years	10.9	12.1	11.1	10.8	4.5
% 3 to under 4 years	8.9	9.5	9.4	9.0	3.9
% 4 to under 5 years	6.3	5.5	7.9	7.5	2.9
% 5 years and over	43.9	50.0	33.8	49.1	10.9

Source: Department for Work and Pensions, IAD Information Centre, August 2003

¹¹ 'Dependants' are defined as children and young people under the age of 19 whose resources and requirements are included in those of the claimant.

¹² '60 or over' does not match the figures for the statistical group of the same name (in Tables B1 and B3). The breakdown shown in this table relates to the age of the claimant only, whereas totals for the statistical group 'Aged 60 or over' are based on benefit units where the claimant and/or partner are aged 60 or over. The statistical group will therefore include claimants aged under 60 whose partners are aged 60 or over.

¹³ The category 'Aged 60 or over' consists of benefit units where the claimant and/or their partners are aged 60 or over. Therefore this category may include claimants who are aged under 60, but whose partner is aged 60 or over.

¹⁴ Excludes lone parents also in receipt of pensioner or disability premia, who are included in the aged 60 or over, or disabled groups.

B4 Partners and Dependants of Income Support Claimants: Scotland, August 2003

Thousands/Row %s

Partners (000s)	Dependants (000s = 100%)	Dependants aged			
		Under 5 %	5-10 %	11-15 %	16 or over %
56.3	187.4	28.3	35.0	29.7	7.0

Source: Department for Work and Pensions, IAD Information Centre, August 2003

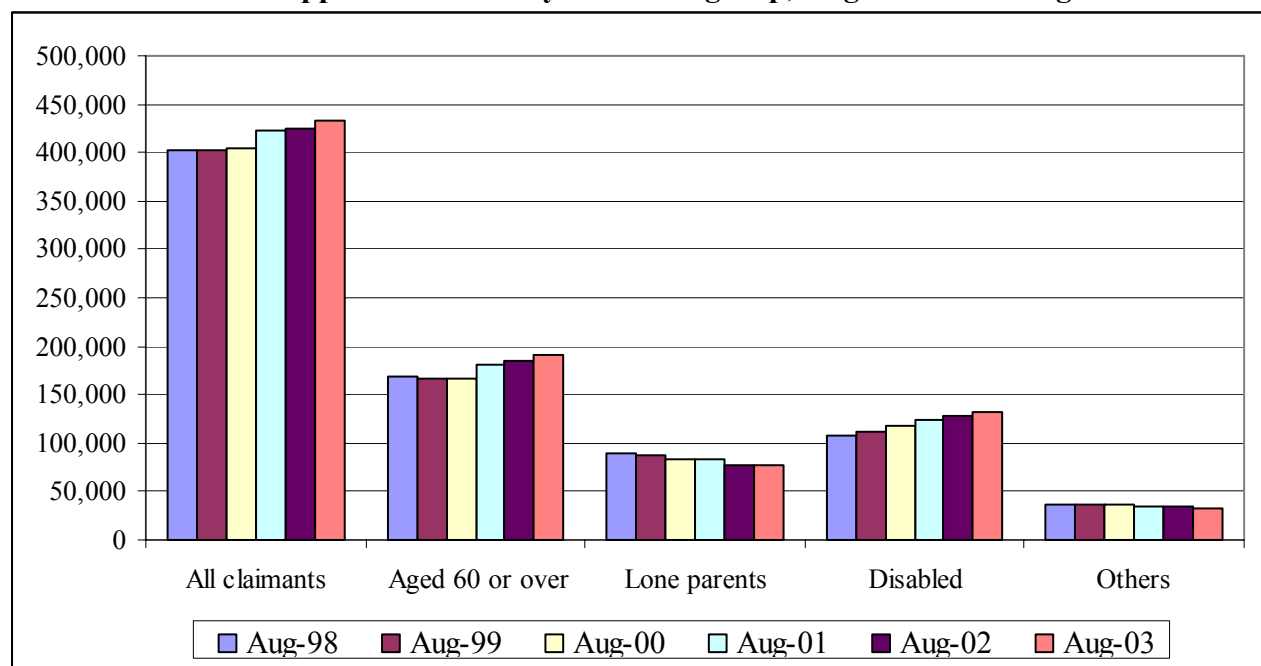
B5 Claimants of Income support by statistical group: August 1998 to August 2003

Thousands/column %s

	Aug-98		Aug-99		Aug-00		Aug-01		Aug-02		Aug-03	
	000s	%	000s	%	000s	%	000s	%	000s	%	000s	%
All claimants	403.4	100	401.5	100	404.2	100	422.0	100	425.1	100	432.9	100
Aged 60 or over ¹³	168.0	42	165.7	41	167.5	41	180.5	43	185.4	44	191.3	44
Lone parents ¹⁴	90.2	22	88.1	22	83.1	21	82.4	20	78.0	18	76.4	18
Disabled	107.6	27	112.0	28	117.7	29	124.7	30	127.5	30	132.4	31
Others	37.6	9	35.7	9	35.9	9	34.4	8	34.2	8	32.8	8

Source: Department for Work and Pensions, IAD Information Centre, August 2003

Chart B1: Income Support claimants by statistical group, August 1998 to August 2003



¹³ The category 'Aged 60 or over' consists of benefit units where the claimant and/or their partners are aged 60 or over. Therefore this category may include claimants who are aged under 60, but whose partner is aged 60 or over.

¹⁴ Excludes lone parents also in receipt of pensioner or disability premia, who are included in the aged 60 or over, or disabled groups.

SECTION C: JOBSEEKER'S ALLOWANCE

Jobseeker's Allowance (JSA) was introduced on 7 October 1996. It replaced Unemployment Benefit (UB) and Income Support (IS) for unemployed people and brought them together in a unified benefit with two routes of entry. It can be claimed by people who are available for and actively seeking employment, including those in remunerative work for less than 16 hours a week on average, and by people on a Government training scheme.

There are two routes of entry to Jobseeker's Allowance:

- **Contribution based JSA:** those who have paid sufficient National Insurance contributions get contribution-based JSA, at a personal rate for up to six months;
- **Income based JSA:** those who do not qualify for, or whose needs are not met by contribution-based JSA may qualify for income-based JSA for themselves and their dependants according to need. The income-based element is paid as long as needed, provided that the qualifying conditions continue to be met.

Credits of National Insurance contributions are normally automatically awarded for each week that Jobseeker's Allowance is paid. Credits are also awarded where the jobseeker satisfies the conditions for Jobseeker's Allowance but does not get it because:

- they have not paid enough contributions; or
- they have already received their full entitlement of contribution-based Jobseeker's Allowance; or
- their income is too high to get income-based Jobseeker's Allowance.

Claimants with occupational pensions who claim contribution-based JSA will have their benefit reduced by the amount the pension exceeds £50 a week. Claimants receiving income-based JSA will have their benefit reduced £ for £.

You can obtain further information on Jobseeker's Allowance from the following URL address: <http://www.jobcentreplus.gov.uk/cms.asp?Page=/Home/Customers/WorkingAgeBenefits/497>

The bulletin containing the most recent GB statistics on Jobseeker's Allowance is at the following URL address: http://www.dwp.gov.uk/asd/asd1/jsa/jsa_quarterly_aug03.asp

Main Findings

- 104.2 thousand people were claiming JSA in Scotland as at August 2003. 3% of the working age population in Scotland were claimants of JSA. The rate for GB as a whole was also 3%.
- Including partners for whom additional amounts of benefit are payable (in other words, partners of JSA Income Based recipients) a total of 113.5 thousand adults were covered by JSA.
- Amongst the local authorities, Dundee, East Ayrshire, Glasgow, Inverclyde, North Ayrshire and West Dunbartonshire had the highest rates of claimants at 5% of the population, while Aberdeenshire and Orkney showed the lowest rates at 1%. (Some of the rates for the smaller local authority areas are based on a small number of sample cases and are therefore subject to a higher degree of sampling variation).
- 91% of claimants (94.4 thousand) received some form of benefit in payment. The majority of these received income-based benefit only (71.8 thousand).
- Three quarters of all claimant were male (78.4 thousand).
- Just over half of claimants were in the 25-49 age group (51%). Younger claimants were more likely to be receiving income based benefit only – as these claimants are more likely to have made insufficient National Insurance contributions.
- Almost 69% of claimants had been claiming for less than 6 months whilst 6% had been claiming for 2 years or more.
- Men tend to have been claiming for longer than women; 7% of men had been claiming for 2 years or more compared to 4% of women.
- The number of claimants of Jobseeker's Allowance has been falling steadily, from 149.5 thousand claimants at August 1998 to 104.2 thousand at August 2003.

C1 Claimants of Jobseeker's Allowance by Local Authority: Scotland, August 2003

	Number of Claimants (000s)	Claimants as a % of population aged 16-59/64	All Claimants and Partners ¹⁵ (000's)	Claimants and Partners ¹⁷ as % of pop aged 16 - 59/64
Scotland	104.2	3	113.5	4
Aberdeen City	2.6	2	2.8	2
Aberdeenshire	1.6	1	1.8	1
Angus	2.3	4	2.6	4
Argyll and Bute	1.4	3	1.5	3
Clackmannanshire	1.1	4	1.2	4
Dumfries and Galloway	2.9	3	3.2	4
Dundee City	4.2	5	4.5	5
East Ayrshire	3.6	5	4.0	6
East Dunbartonshire	1.4	2	1.4	2
East Lothian	1.0	2	1.2	2
East Renfrewshire	1.0	2	1.1	2
Edinburgh, City of	7.5	3	8.0	3
Eilean Siar	0.5	3	0.6	4
Falkirk	2.8	3	3.0	3
Fife	9.2	4	10.0	5
Glasgow City	17.3	5	18.8	5
Highland	3.6	3	4.2	3
Inverclyde	2.8	5	3.0	6
Midlothian	0.9	2	1.0	2
Moray	1.3	3	1.4	3
North Ayrshire	4.5	5	4.9	6
North Lanarkshire	7.7	4	8.4	4
Orkney Islands	*0.1	*1	*0.1	*1
Perth and Kinross	1.5	2	1.5	2
Renfrewshire	4.0	4	4.2	4
Scottish Borders	1.6	2	1.8	3
Shetland Islands	*0.4	*3	0.5	4
South Ayrshire	2.5	4	2.8	4
South Lanarkshire	5.9	3	6.4	3
Stirling	1.4	3	1.5	3
West Dunbartonshire	2.8	5	3.0	5
West Lothian	2.7	3	3.1	3

Source: Department for Work and Pensions, IAD Information Centre, August 2003

¹⁵ Partners for whom additional amounts of benefit are payable; in other words, partners of JSA Income Based recipients.

C2 Claimants of Jobseeker's Allowance by Benefit Entitlement and Duration of Current Claim: Scotland, August 2003

Thousands / Column %s

	All Claimants		All with benefit		Type of unemployment related benefit			
	000s	%	000s	%	Contribution based only (000s)	Contribution and income based (000s)	Income based only (000s)	No benefit in payment (000s)
All (000s = 100%)	104.2	100	94.4	100	20.7	1.9	71.8	9.8
Up to 2 weeks	10.3	9.9	8.0	8.5	2.7	*0.3	5.1	2.3
2 to under 6 weeks	17.7	17.0	16.1	17.0	5.4	*0.4	10.3	1.6
6 to under 13 weeks	22.7	21.8	21.1	22.4	6.5	*0.4	14.2	1.6
13 to under 26 weeks	21.0	20.1	19.8	21.0	6.1	0.8	12.9	1.2
26 to under 39 weeks	10.1	9.7	9.0	9.5	-	-	9.0	1.2
39 weeks to under 1 year	5.9	5.6	5.1	5.4	-	-	5.1	0.8
1 to under 2 years	9.9	9.5	9.0	9.6	-	-	9.0	0.9
2 years or over	6.7	6.4	6.3	6.7	-	-	6.3	*0.4

Source: Department for Work and Pensions, IAD Information Centre, August 2003

C3 Claimants of Jobseeker's Allowance by Sex, Age and Duration of Current Claim: Scotland, August 2003

Thousands / Row %s

	All Claimants (000s=100%)	Duration of current claim			
		Under 6 months %	6 months to under 1 year %	1 to under 2 years %	2 years or more %
All persons	104.2	68.8	15.3	9.5	6.4
Under 18	2.9	94.9	5.1	0.0	0.0
18 to 24	30.5	86.5	11.6	1.6	0.3
25 to 49	53.4	63.2	18.1	12.5	6.2
50 or over	17.5	50.3	15.0	15.9	18.8
Males	78.4	66.1	16.2	10.6	7.1
Under 18	1.5	94.4	5.6	0.0	0.0
18 to 24	20.8	85.9	11.9	1.9	0.3
25 to 49	42.6	61.2	18.7	13.5	6.6
50 or over	13.4	48.0	16.0	15.8	20.2
Females	25.9	76.7	12.8	6.3	4.2
Under 18	1.4	95.4	4.6	0.0	0.0
18 to 24	9.7	87.8	10.9	0.8	0.4
25 to 49	10.7	71.4	15.9	8.4	4.4
50 or over	4.1	57.9	12.0	16.1	14.0

Source: Department for Work and Pensions, IAD Information Centre, August 2003

C4 Claimants of Jobseeker's Allowance by Age and Benefit Entitlement: Scotland, August 2003

Thousands / Column %s

	All Claimants		All with benefit		Type of unemployment related benefit			
					Contribution based only (000s)	Contribution and income based (000s)	Income based only (000s)	No benefit in payment (000s)
	000s	%	000s	%				
All (000s = 100%)	104.2	100	94.4	100	20.7	1.9	71.8	9.8
Under 18	2.9	3	2.8	3	-	-	2.8	-
18-24	30.5	29	28.8	31	4.4	*0.2	24.2	1.8
25-49	53.4	51	49.2	52	12.6	1.3	35.2	4.2
50 or over	17.5	17	13.6	14	3.7	*0.4	9.5	3.9

Source: Department for Work and Pensions, IAD Information Centre, August 2003

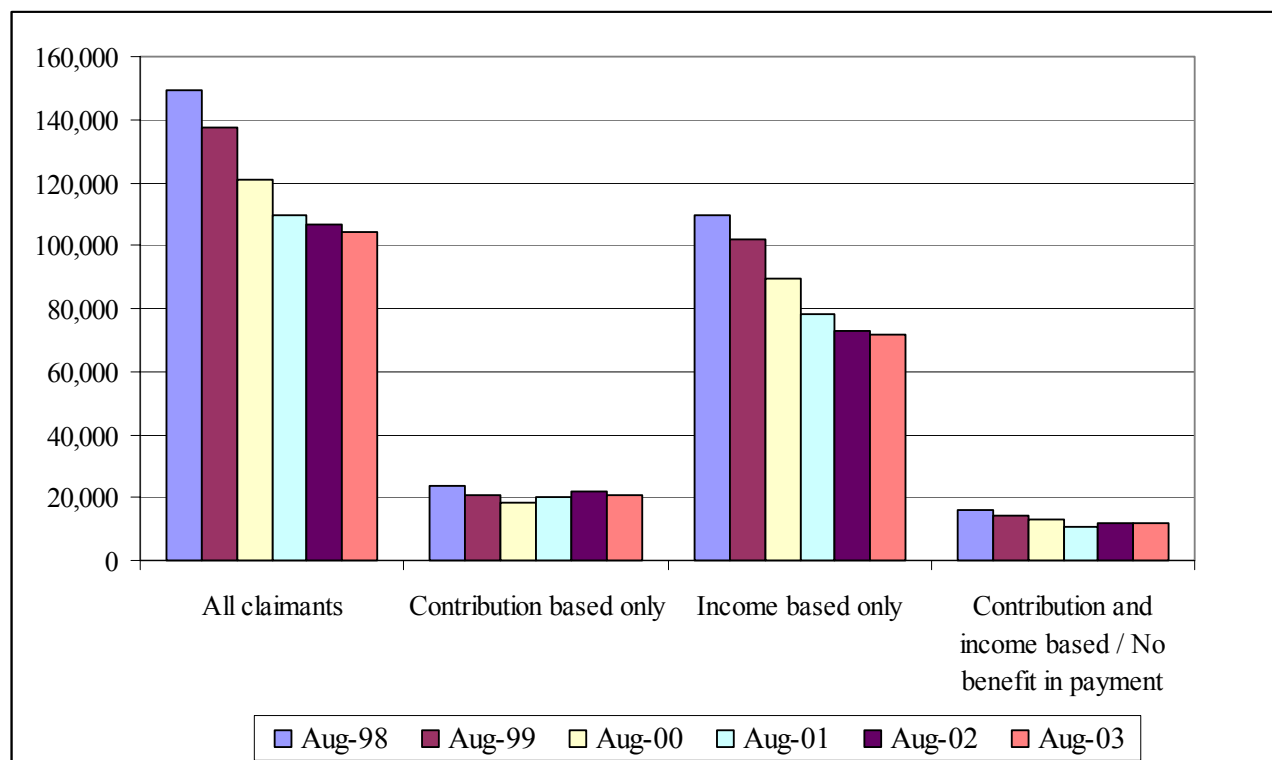
C5 Jobseeker's Allowance claimants by Benefit Entitlement, August 1998 to August 2003

Thousands/column %s

	Aug-98		Aug-99		Aug-00		Aug-01		Aug-02		Aug-03	
	000s	%	000s	%	000s	%	000s	%	000s	%	000s	%
All claimants	149.5	100	137.3	100	120.8	100	109.4	100	106.9	100	104.2	100
Contribution based only	23.6	16	20.7	15	18.4	15	20.1	18	22.1	21	20.7	20
Income based only	109.6	73	102.2	74	89.3	74	78.5	72	72.9	68	71.8	69
Contribution and income based/No benefit in payment	16.2	11	14.5	11	13.1	11	10.9	10	11.9	11	11.7	11

Source: Department for Work and Pensions, IAD Information Centre.

Chart C1 Jobseeker's Allowance claimants by Benefit Entitlement, August 1998 to August 2003



SECTION D: INCAPACITY BENEFIT

Incapacity Benefit is a **contributory** benefit. It replaced Sickness Benefit and Invalidity Benefit from 13 April 1995 and is paid to people who are assessed as being incapable of work and who meet certain contribution conditions.

There are three rates of Incapacity Benefit. There are two short-term rates: the lower rate - IBST(L) - is paid for the first 28 weeks of sickness and the higher rate - IBST(H) - for weeks 29 to 52. The long-term rate - IBLT - applies to people who have been sick for more than a year. The higher short-term rate and the long-term rate are treated as **taxable** income.

Incapacity Benefit will be paid at the short-term rate for people over pension age for up to a year from the date of claim, but only if the incapacity began before they reached pension age.

Increases are paid for dependant adults where the spouse is aged 60 or over and, for claims originating before April 2003, who are caring for a child. (From April 2003 child dependency increases were abolished for new claims to Incapacity Benefit, State Pension, Bereavement Benefit, and Carer's Allowance - see Annex 1 for further details). Increases for children are paid with the short-term higher rate and with the long-term rate. An age addition is paid with the long-term rate at one of two rates depending on the age when incapacity began.

For the first 28 weeks of incapacity, people previously in work are assessed on the 'own occupation' test – the claimants ability to do their own job. Otherwise incapacity is based on the 'personal capability assessment' (formerly 'all work test') which assesses ability to carry out a range of work-related activities. The test applies after 28 weeks of incapacity or from the start of the claim for people who did not previously have a job.

Certain people are exempt from the personal capability assessment. This includes, those in receipt of Disability Living Allowance care at the higher rate, those registered blind, or those suffering from a severe illness (for example: tetraplegia, persistent vegetative state, dementia).

There were transitional provisions for people who were on Sickness or Invalidity Benefit on 12 April 1995. They were automatically transferred to Incapacity Benefit payable on the same basis as before. Former Invalidity Benefit recipients continue to get additional pension entitlement, but frozen at 1994 rates. If they were over state pension age on 12 April 1995 they may have received Incapacity Benefit for up to 5 years beyond pension age. Benefit received by former Invalidity Benefit claimants is not subject to tax.

Since April 2001, occupational and personal pensions paid by employers in excess of £85 a week are taken into account when assessing IB for new claimants. Benefit is reduced by 50% of the excess over £85. People with the most severe disabilities, who receive the highest rate of the care component of Disability Living Allowance, will not have their IB affected by pensions.

'**Claimants**' include people who are in receipt of benefit and also those who applied for the benefit and continue to submit medical evidence, but who either are not entitled because of failing the contribution conditions, or have their benefit extinguished for reasons such as an overlap with another benefit, or because of hospitalisation. All claimants receive National Insurance credits regardless of whether or not they receive benefit payments.

'**Beneficiaries**' are people who are actually in receipt of benefit payments.

You can obtain further information on Incapacity Benefit from the following URL address:
<http://www.jobcentreplus.gov.uk/cms.asp?Page=/Home/Customers/WorkingAgeBenefits/492>

The bulletin detailing comparable GB statistics on Incapacity Benefit is at the following URL address: http://www.dwp.gov.uk/asd/asd1/ib_sda/ib_sda_aug03.asp

Main Findings

- There were 289.7 thousand claimants of Incapacity Benefit in Scotland as at August 2003; almost two thirds of these (185.2 thousand) received benefit payments, with the remaining third receiving National Insurance Credits only.
- Scotland has a higher rate of Incapacity Benefit claimants than Great Britain. 9% of people of working age in Scotland (16-59/64) were claimants compared to only 7% for Great Britain as a whole.
- At a local authority level, Glasgow City had the highest rate of claimants at 16% of the population. Orkney Islands and Shetland Islands showed the lowest rates, with 3% and 4% respectively, (although as these rates are based on a small number of sample cases, they are subject to a higher degree of sampling variation).
- Glasgow and North Lanarkshire had the highest proportion of beneficiaries, each at 9% of the population. In Scotland as a whole the rate was 6%. The equivalent rate for Great Britain was 4%.
- The majority of claimants and beneficiaries were male – 59% of claimants (171.9 thousand) and 62% of beneficiaries (115.4 thousand). This may be partly due to the fact that incapacity benefit is a contributory benefit and some women (particularly older women) may not have made sufficient National Insurance contributions to receive it.
- 36% of claimants received National Insurance credits only. Of those who received payment, 162.7 thousand were paid at the long-term rate (88% of beneficiaries).
- 46% (134.7 thousand) of claimants have been on Incapacity Benefit for over 5 years. Older claimants are more likely to have been on the benefit for a longer duration; 59% of claimants aged 50-64 have been claiming for over 5 years.
- The total number of Incapacity Benefit claimants has remained fairly steady for the past five years. There has been an decrease in the number of long term claimants (from 183.6 thousand as at August 1998 to 163.3 thousand at August 2003) and an increase in the number receiving National Insurance credits only (from 80.1 thousand to 103.3 thousand over the period).

D1 Claimants and Beneficiaries of Incapacity Benefit by Local Authority: Scotland, August 2003

	Number of Claimants (000s)	Claimants as % of population aged 16-59/64	Number of Beneficiaries	Beneficiaries as % of population aged 16-59/64
Scotland	289.7	9	185.2	6
Aberdeen City	9.9	7	6.1	4
Aberdeenshire	7.9	6	5.5	4
Angus	4.3	7	2.8	4
Argyll and Bute	4.0	7	2.3	4
Clackmannanshire	3.3	11	2.2	7
Dumfries and Galloway	6.1	7	4.2	5
Dundee City	8.5	9	4.8	5
East Ayrshire	7.9	11	5.4	7
East Dunbartonshire	3.3	5	2.4	4
East Lothian	4.3	8	3.1	6
East Renfrewshire	3.1	6	2.5	5
Edinburgh, City of	19.1	6	10.8	4
Eilean Siar	1.2	8	0.8	6
Falkirk	7.8	9	5.3	6
Fife	17.2	8	11.8	5
Glasgow City	59.3	16	31.6	9
Highland	8.6	7	5.6	4
Inverclyde	6.9	13	4.3	8
Midlothian	3.7	7	2.8	6
Moray	2.6	5	1.9	4
North Ayrshire	8.8	11	5.8	7
North Lanarkshire	26.2	13	17.9	9
Orkney Islands	*0.4	*3	*0.3	*2
Perth and Kinross	4.3	5	2.9	4
Renfrewshire	12.2	11	8.6	8
Scottish Borders	3.9	6	2.7	4
Shetland Islands	0.5	4	*0.4	*3
South Ayrshire	5.5	8	3.7	6
South Lanarkshire	20.2	11	14.2	8
Stirling	4.1	8	2.7	5
West Dunbartonshire	6.3	11	4.1	7
West Lothian	8.2	8	5.7	6

Source: Department for Work and Pensions, IAD Information Centre, August 2003

D2 Claimants and Beneficiaries of Incapacity Benefit by Age and Sex: Scotland, August 2003

	Thousands					
	Claimants			Beneficiaries		
	Total	Men	Women	Total	Men	Women
All Ages	289.7	171.9	117.8	185.2	115.4	69.8
Under 25	19.8	10.4	9.4	8.1	4.3	3.9
25-49	134.4	73.3	61.2	72.9	39.5	33.4
50-59	100.6	53.3	47.2	73.6	41.1	32.6
60-64	34.9	34.9	-	30.5	30.5	-
65 and over	-	-	-	-	-	-

Source: Department for Work and Pensions, IAD Information Centre, August 2003

D3 Claimants and Beneficiaries of Incapacity Benefit by Rate of Benefit: Scotland, August 2003

	Thousands	
	Claimants	Beneficiaries
All Incapacity Benefit (IB)	289.7	185.2
IB Short Term (Lower Rate)	11.9	11.4
IB Short Term (Higher Rate)	11.2	11.1
IB Long Term:	All Long Term	163.3
	Ex-Invalidity Benefit	66.6
	Other Long Term	96.8
Credits only	103.3	-

Source: Department for Work and Pensions, IAD Information Centre, August 2003

D4 Claimants of Incapacity Benefit by Age and Duration of Benefit: Scotland, August 2003

	Thousands			
	All Ages	Under 50	50-64	65 and over
All	289.7	154.2	135.5	-
Up to 1 month	4.9	3.6	1.4	-
Over 1 month up to 3 months	11.9	8.9	3.0	-
Over 3 months up to 6 months	16.1	11.0	5.0	-
Over 6 months up to 1 year	21.6	15.4	6.2	-
Over 1 year up to 2 years	31.9	21.1	10.8	-
Over 2 years up to 3 years	25.0	15.4	9.6	-
Over 3 years up to 4 years	23.0	13.0	10.0	-
Over 4 years up to 5 years	20.6	11.2	9.4	-
Over 5 years	134.7	54.6	80.1	-

Source: Department for Work and Pensions, IAD Information Centre, August 2003

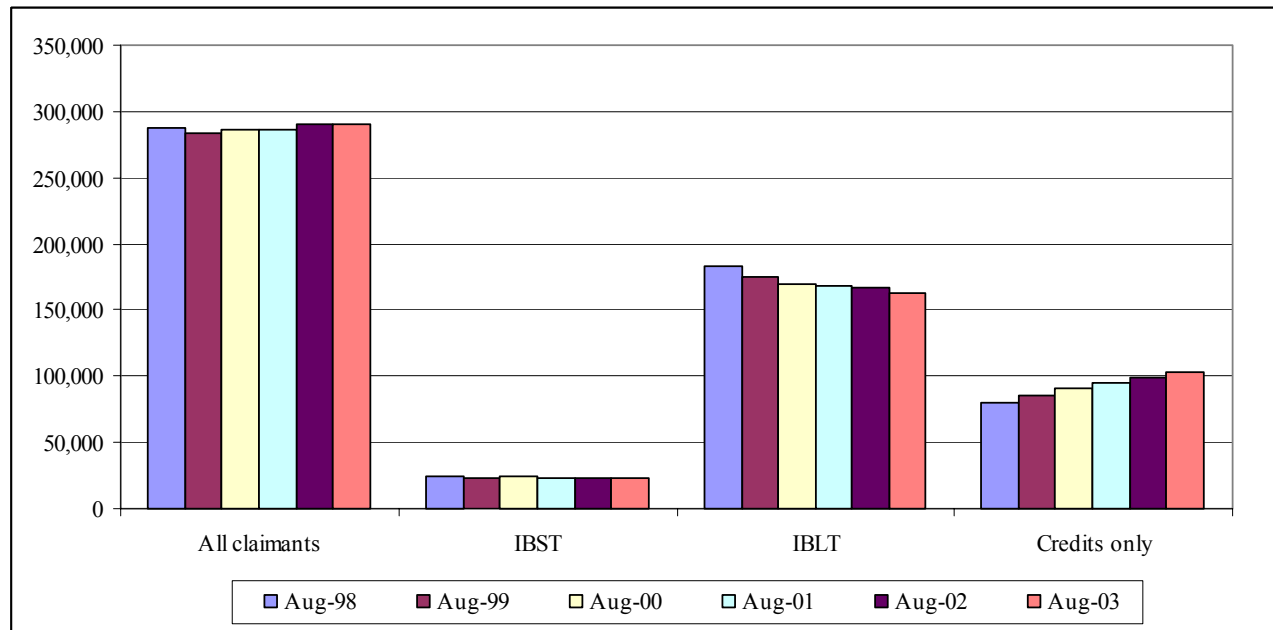
D5 Claimants of Incapacity Benefit by Rate of Benefit, August 1998 to August 2003¹⁶

Thousands/column %s

	Aug-98		Aug-99		Aug-00		Aug-01		Aug-02		Aug-03	
	000s	%	000s	%	000s	%	000s	%	000s	%	000s	%
All Claimants	287.8	100	283.2	100	285.8	100	286.0	100	289.7	100	289.7	100
IBST	24.0	8	23.3	8	24.2	8	23.3	8	22.8	8	23.0	8
IBLT	183.6	64	174.4	62	170.1	60	168.3	59	167.3	58	163.3	56
Credits only	80.1	28	85.5	30	91.4	32	94.4	33	99.6	34	103.3	36

Source: Department for Work and Pensions, IAD Information Centre.

Chart D1 Claimants of Incapacity Benefit by Rate of Benefit, August 1998 to August 2003



¹⁶ The fall in total claimants of Incapacity Benefit between 1998 and 1999 may be a reflection of a change in the rules for which persons were eligible to receive this benefit. At the time Incapacity Benefit was introduced in 1995, persons over pensionable age who had previously received Invalidity Benefit could continue to claim Incapacity Benefit until 5 years after the date on which they reached state pension age. However, persons newly receiving Incapacity Benefit can only continue to receive it up until they reach State Pension age.

SECTION E: SEVERE DISABLEMENT ALLOWANCE

Severe Disablement Allowance (SDA) replaced both non-contributory invalidity pension (NCIP) and housewives' non-contributory invalidity pension (HNCIP) from 29 November 1984. It is payable to those aged 16 or over who have been unable to work for a continuous period of 28 weeks because of incapacity and who do not qualify for Incapacity Benefit (because of an insufficient contribution record).

SDA is not available to new claimants from 6 April 2001. From this point, disabled people, whose period of incapacity begins before the age of 20 (or 25 if in education or training before the age of 20), may be able to receive Incapacity Benefit without having to satisfy the National Insurance contribution conditions. SDA recipients aged below 20 at the cut-off point transferred on to IB at the long-term rate in April 2002. Existing recipients can continue to receive the benefit for as long as they satisfy the conditions of entitlement for the benefit.

A person must continue to meet the threshold of incapacity and evidence of this is normally provided in the form of a statement from the claimant's doctor or by meeting the incapacity threshold under the Personal Capability Assessment. In addition, someone whose period of incapacity began after their 20th birthday must also continue to be assessed as 80 per cent disabled.

People who are in receipt of certain benefits, such as those receiving the highest rate care component of Disability Living Allowance, or people who are registered blind, are automatically accepted as satisfying the disablement condition.

It is a **tax-free** allowance, paid regardless of unearned income or resources apart from overlapping with certain other benefits.

'Claimants' include people who are in receipt of benefit and also those who applied for the benefit and continue to submit medical evidence, but have their benefit extinguished for reasons such as an overlap with another benefit, or because of hospitalisation.

'Beneficiaries' are people who are actually in receipt of benefit.

You can obtain further information on Severe Disablement Allowance from the following URL address:

<http://www.jobcentreplus.gov.uk/cms.asp?Page=/Home/Customers/WorkingAgeBenefits/500>

The bulletin detailing comparable GB statistics on Severe Disablement Allowance is at the following URL address: http://www.dwp.gov.uk/asd/asd1/ib_sda/ib_sda_aug03.asp

Main Findings

- There were 36.4 thousand claimants of Severe Disablement Allowance in Scotland as at August 2003. Almost all claimants met the eligibility conditions to receive the benefit.
- There were 9 claimants per 1,000 population aged 16 and over in Scotland, compared to 7 per 1,000 in Great Britain as a whole.
- At a local authority level, Dundee City and Shetland Islands showed the highest rate of 14 per 1,000 population while East Renfrewshire and Scottish Borders showed the lowest rate of 6. It should be noted, however, that the figures for a number of local authority areas are based on a small number of sample cases and are therefore subject to a high degree of sampling variation.
- Over half of all claimants (53%) were aged 25-49.
- The majority of Severe Disablement Allowance claimants were women (59%).

**E1 Claimants and Beneficiaries of Severe Disablement Allowance by Local Authority:
Scotland, August 2003**

	<i>Thousands/column %s</i>			
	Number of Claimants (000s)	Claimants per 1,000 population aged 16+	Number of Beneficiaries (000s)	Beneficiaries per 1,000 population aged 16+
Scotland	36.4	9	36.4	9
Aberdeen City	1.2	7	1.2	7
Aberdeenshire	1.3	7	1.3	7
Angus	0.8	9	0.8	9
Argyll and Bute	0.5	7	0.5	7
Clackmannanshire	*0.3	*8	*0.3	*8
Dumfries and Galloway	1.0	8	1.0	8
Dundee City	1.6	14	1.6	14
East Ayrshire	0.9	9	0.9	9
East Dunbartonshire	0.6	7	0.6	7
East Lothian	0.6	8	0.6	8
East Renfrewshire	*0.4	*6	*0.4	*6
Edinburgh, City of	3.2	9	3.2	9
Eilean Siar	*0.1	*7	*0.1	*7
Falkirk	1.1	10	1.1	10
Fife	2.4	8	2.4	8
Glasgow City	5.0	11	5.0	11
Highland	1.3	8	1.3	8
Inverclyde	0.6	9	0.6	9
Midlothian	*0.4	*7	*0.4	*7
Moray	0.5	8	0.5	8
North Ayrshire	1.0	9	1.0	9
North Lanarkshire	2.8	11	2.8	11
Orkney Islands	*0.2	*13	*0.2	*13
Perth and Kinross	0.8	7	0.8	7
Renfrewshire	1.4	10	1.4	10
Scottish Borders	0.5	6	0.5	6
Shetland Islands	*0.2	*14	*0.2	*14
South Ayrshire	1.0	11	1.0	11
South Lanarkshire	2.3	9	2.3	9
Stirling	0.5	8	0.5	8
West Dunbartonshire	0.5	7	0.5	7
West Lothian	1.2	9	1.1	9

Source: Department for Work and Pensions, IAD Information Centre, August 2003

**E2 Claimants and Beneficiaries of Severe Disablement Allowance by Age and Sex:
Scotland, August 2003**

	Thousands					
	Claimants			Beneficiaries		
	Total	Men	Women	Total	Men	Women
All Ages	36.4	15.0	21.4	36.4	15.0	21.4
Under 25	1.8	1.0	0.8	1.8	1.0	0.8
25-49	19.3	9.6	9.8	19.3	9.6	9.8
50-59	9.0	2.7	6.3	9.0	2.7	6.3
60-64	2.9	1.1	1.8	2.9	1.1	1.8
65 and over	3.4	0.7	2.7	3.4	0.7	2.7

Source: Department for Work and Pensions, IAD Information Centre, August 2003

SECTION F: DISABILITY LIVING ALLOWANCE

Disability Living Allowance (DLA) is **non-contributory, non income assessed and non taxable**. It replaced and extended Attendance Allowance and Mobility Allowance in April 1992 for disabled people who claim before the age of 65. People already in receipt of either Attendance Allowance or Mobility Allowance before April 1992 were invited to make a 'top up' claim for the other component.

DLA is payable to people who are disabled and who have personal care needs, mobility needs or both. DLA consists of two components:

- The care component: for people who need help with personal care;
- The mobility component: for people who need help with getting around.

The care component is paid at one of three rates and the mobility component at one of two rates.

To qualify for DLA the need for help must have existed for three months (the qualifying period) and be expected to last for at least a further six months (the prospective test). People who are not expected to live longer than six months because of an illness do not have to satisfy either the qualifying period or the prospective test. Once awarded, DLA will continue to be paid as long as the conditions of entitlement are met.

‘**Allowances**’ refer to the number of people in receipt of benefit at the specified date, excluding those with entitlement where the payment has been suspended.

‘**Awards**’ refer to new awards of benefit made during the preceding year.

You can obtain further information on DLA from the following URL address:
http://www.dwp.gov.uk/lifeevent/benefits/disability_liv_allowance.asp

The bulletin detailing comparable GB statistics on Disability Living Allowance is at the following URL address:

http://www.dwp.gov.uk/asd/asd1/dla/dla_quarterly_statistics_aug03.asp

Main Findings

- 281.2 thousand people were receiving Disability Living Allowance in Scotland as at August 2003.
- 28.9 thousand new awards of DLA were made during the year to August 2003.
- 6% of the total population received DLA in Scotland compared to a GB rate of 4%. The rate varied between local authority areas, from 3% in Moray to 8% in Glasgow City.
- Of the total number of recipients, 66% received both care and mobility components, 23% received the mobility component only and 11% received the care component only.
- Arthritis was the single most common disabling condition for those receiving DLA, accounting for 55.8 thousand recipients (20%).
- Out of the 28.9 thousand new awards made during the year to August 2003, 60% had a care and mobility component, 18% had a mobility component only and 21% had a care component only.
- The number of recipients of Disability Allowance has increased by 24% over the last four years, from 226.2 thousand at August 1998 to 281.2 thousand at August 2003.

F1 Allowances of Disability Living Allowance by Local Authority: Scotland, August 2003

	Number of Allowances (000s)	Allowances as a % of population (all ages)
Scotland	281.2	6
<i>Local authority unknown</i>	<i>*0.1</i>	
Aberdeen City	8.5	4
Aberdeenshire	8.7	4
Angus	4.6	4
Argyll and Bute	3.8	4
Clackmannanshire	3.1	7
Dumfries and Galloway	7.6	5
Dundee City	8.6	6
East Ayrshire	7.4	6
East Dunbartonshire	4.1	4
East Lothian	4.3	5
East Renfrewshire	3.2	4
Edinburgh, City of	18.7	4
Eilean Siar	1.0	4
Falkirk	8.6	6
Fife	18.8	5
Glasgow City	48.4	8
Highland	9.1	4
Inverclyde	5.6	7
Midlothian	4.9	6
Moray	3.0	3
North Ayrshire	8.3	6
North Lanarkshire	23.2	7
Orkney Islands	0.8	4
Perth and Kinross	4.7	4
Renfrewshire	11.0	6
Scottish Borders	4.0	4
Shetland Islands	0.8	4
South Ayrshire	5.8	5
South Lanarkshire	19.4	6
Stirling	4.5	5
West Dunbartonshire	6.7	7
West Lothian	10.0	6

Source: Department for Work and Pensions, IAD Information Centre, August 2003

F2 Allowances and Awards of Disability Living Allowance by Age and Sex: Scotland, August 2003

	Allowances			Awards in year to Aug 2003		
	Total	Men	Women	Total	Men	Women
All Ages	281.2	137.1	144.1	28.9	14.5	14.4
Under 25	35.4	22.1	13.3	5.2	3.2	2.0
25-49	75.6	35.9	39.7	10.5	4.7	5.8
50-59	61.0	27.8	33.2	8.2	3.7	4.4
60-64	39.1	18.6	20.5	4.5	2.7	1.8
65 and over	70.1	32.7	37.4	0.6	*0.2	*0.4

Source: Department for Work and Pensions, IAD Information Centre, August 2003

F3 Allowances of Disability Living Allowance by Disability: Scotland, August 2003

	Thousands			
	All Allowances	Care component only	Mobility component only	Care and mobility component
All Conditions	281.2	30.1	65.1	185.9
Arthritis	55.8	5.1	15.9	34.8
Muscle/bone/joint disease	20.2	3.3	5.6	11.3
Blindness	6.2	*0.3	0.6	5.4
Stroke related	12.9	1.0	1.3	10.6
Learning difficulties	24.8	2.7	4.0	18.1
Other mental health causes	40.5	4.2	5.8	30.5
Epilepsy	6.9	0.9	*0.2	5.8
Deafness	2.5	0.6	*0.4	1.5
Malignant disease	6.0	0.7	0.7	4.6
Chest disease	12.6	0.6	4.4	7.6
Back ailments	20.2	1.9	6.4	11.9
Heart disease	21.0	0.8	9.4	10.8
Diabetes mellitus	4.9	2.0	0.6	2.2
Other	46.5	5.9	9.6	30.9

Source: Department for Work and Pensions, IAD Information Centre, August 2003

F4 Awards of Disability Living Allowance by Disability: Scotland, Year to August 2003

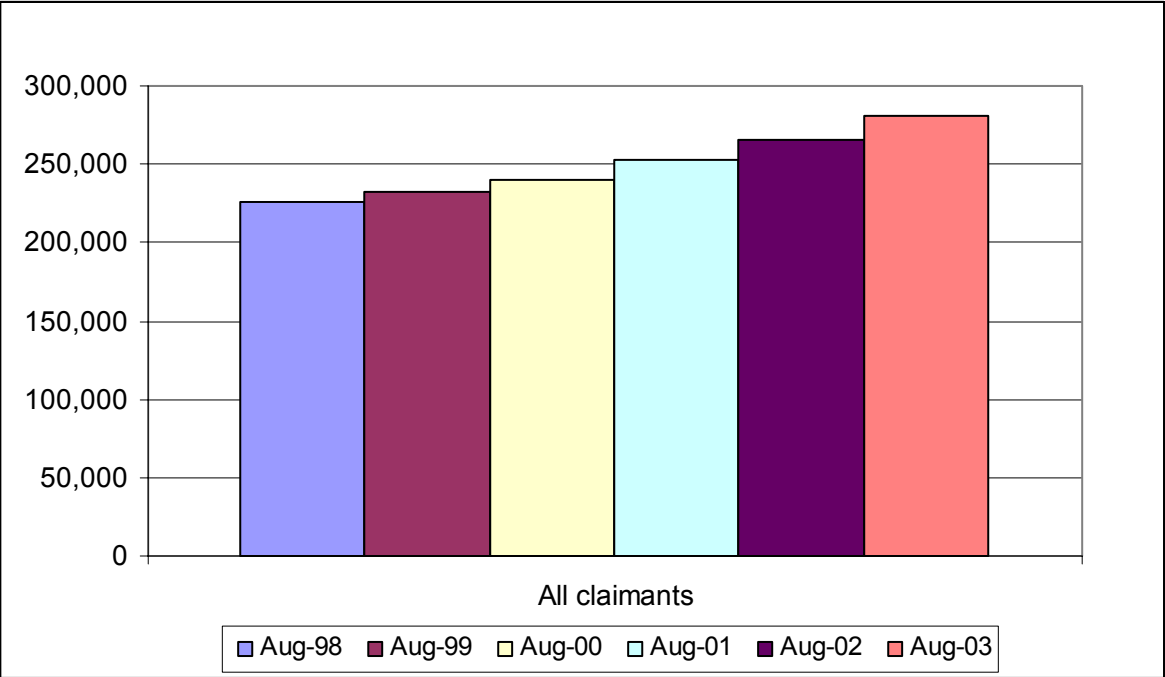
	Thousands			
	All Awards	Care component only	Mobility component only	Care and mobility component
All Conditions	28.9	6.2	5.3	17.4
Arthritis	3.2	0.7	0.9	1.6
Muscle/bone/joint disease	1.8	0.5	*0.4	0.8
Learning difficulties	1.5	0.5	*0.1	0.9
Other mental health causes	6.8	1.1	1.2	4.6
Malignant disease	3.1	*0.3	*0.1	2.7
Back ailments	2.2	0.6	0.6	1.0
Heart disease	1.8	*0.2	0.7	0.9
Other	8.5	2.3	1.3	5.0

Source: Department for Work and Pensions, IAD Information Centre, August 2003

F5 Allowances of Disability Living Allowance by Disability, August 1998 to August 2003

	Thousands					
	Aug-98 000s	Aug-99 000s	Aug-00 000s	Aug-01 000s	Aug-02 000s	Aug-03 000s
All Allowances	226.2	232.3	240.5	253.4	265.7	281.2

Chart F1 Allowances of Disability Living Allowance by Disability, August 1998 to August 2003



SECTION G: ATTENDANCE ALLOWANCE

Attendance Allowance (AA) is a **non-contributory, non income assessed and non-taxable** benefit for people who are so severely disabled, physically or mentally, that they need someone with them to help with personal care. They could need either frequent help coping with their bodily functions or constant care to stop them hurting themselves or others. This could be either during the day or at night.

A claimant who needs help both during the day and at night can get the higher rate of AA. A claimant who needs help either during the day or at night gets the lower rate. From October 1990, people who have a terminal illness and are therefore not likely to live for more than 6 months, were also invited to claim. AA can be awarded to a disabled person with care needs who claims on or after their 65th birthday. Since April 1992, people who were disabled before the age of 65 receive DLA instead of AA.

‘**Allowances**’ refer to the number of people in receipt of benefit at the specified date, excluding those with entitlement where the payment has been suspended.

‘**Awards**’ refer to new awards of benefit made during the preceding year.

You can obtain further information on AA from the following URL address:
http://www.dwp.gov.uk/lifeevent/benefits/attendance_allowance.asp

The bulletin detailing comparable GB statistics on Attendance Allowance is at the following URL address:

http://www.dwp.gov.uk/asd/asd1/aa/aa_quarterly_statistics_aug03.asp

Main Findings

- 133.8 thousand people were receiving Attendance Allowance in Scotland as at August 2003; 16% of the 65+ population in Scotland were recipients. The comparable GB rate was 15%.
- 31.9 thousand new awards of AA were made during the year to August 2003.
- Glasgow City had the highest rate amongst local authorities at 22% whilst Clackmannanshire and Moray had the lowest at 12%.
- 69% of recipients (92.7 thousand) were women as were 61% of new awards made during the preceding year.
- 82% of recipients were aged 75 or over. Almost a third (40.8 thousand) were aged 85 or over – the vast majority of whom (78%) were women.
- Arthritis was the single most common disabling condition for those receiving Attendance Allowance with 35.5 thousand recipients in this category; 55 per cent of these (19.7 thousand) received benefit at the higher rate.
- The number of recipients of Attendance Allowance has increased from 124.8 thousand at August 1998 to 133.8 thousand at August 2003. Part of this increase is due to a change in the methodology in November 2002. This change allowed statistics to be published much sooner. However, it caused an increase in the number of recipients because some cases which have actually terminated but have not yet been updated on the computer system are now included. A larger proportion of these recipients (56% at August 2003) now receive the higher rate than at August 1998 (47%).

G1 Allowances of Attendance Allowance by Local Authority: Scotland, August 2003

	Number of Allowances	Allowances as % of pop aged 65+
Scotland	133.8	16
Aberdeen City	5.5	17
Aberdeenshire	4.5	14
Angus	2.7	14
Argyll and Bute	2.5	14
Clackmannanshire	0.8	12
Dumfries and Galloway	3.9	13
Dundee City	5.3	20
East Ayrshire	3.6	19
East Dunbartonshire	2.8	16
East Lothian	2.8	18
East Renfrewshire	2.4	17
Edinburgh, City of	9.6	14
Eilean Siar	0.8	15
Falkirk	3.5	16
Fife	8.0	14
Glasgow City	19.4	22
Highland	4.7	13
Inverclyde	2.4	17
Midlothian	2.0	16
Moray	1.8	12
North Ayrshire	3.2	15
North Lanarkshire	8.8	20
Orkney Islands	0.5	15
Perth and Kinross	3.6	14
Renfrewshire	4.7	18
Scottish Borders	2.8	14
Shetland Islands	0.6	19
South Ayrshire	3.9	18
South Lanarkshire	8.6	18
Stirling	2.1	15
West Dunbartonshire	2.8	19
West Lothian	3.3	18

Source: Department for Work and Pensions, IAD Information Centre, August 2003

G2 Allowances and Awards of Attendance Allowance by Age and Sex: Scotland, August 2003

Thousands

	Allowances at August 2003			Awards in year to August 2003		
	Total	Men	Women	Total	Men	Women
All Ages	133.8	41.1	92.7	31.9	12.5	19.4
65-69	6.2	2.7	3.5	3.9	1.8	2.1
70-74	17.8	6.8	11.0	6.7	3.0	3.8
75-79	31.5	11.6	19.9	8.0	3.0	5.0
80-84	37.5	11.1	26.4	7.6	3.1	4.5
85-89	24.6	6.0	18.6	3.8	1.3	2.5
90 & over	16.2	3.0	13.2	1.9	*0.4	1.5

Source: Department for Work and Pensions, IAD Information Centre, August 2003

G3 Allowances of Attendance Allowance by Disability and Rate: Scotland, August 2003

Thousands

	Allowances		
	Total	Higher Rate	Lower Rate
All Conditions	133.8	74.4	59.4
Arthritis	35.5	19.7	15.8
Muscle/Joint/Bone disease	6.6	3.5	3.0
Blindness	6.2	2.5	3.7
Stroke-related	11.3	7.0	4.3
Mental health causes	13.4	7.2	6.1
Malignant disease	2.5	1.7	0.8
Chest disease	8.7	5.2	3.5
Back ailments	2.8	1.4	1.4
Heart disease	15.9	8.7	7.1
Parkinsons disease	2.3	1.6	0.7
Diabetes mellitus	1.5	0.7	0.8
Frailty	13.0	7.0	6.0
Other	14.3	8.0	6.3

Source: Department for Work and Pensions, IAD Information Centre, August 2003

G4 Awards of Attendance Allowance by Disability and Rate: Scotland, Year to August 2003

Thousands

	Awards		
	Total	Higher Rate	Lower Rate
All Conditions	31.9	21.1	10.8
Arthritis	6.2	4.1	2.1
Muscle/Joint/Bone disease	1.6	1.0	0.6
Blindness	0.9	0.5	*0.4
Stroke-related	2.0	1.3	0.7
Mental health causes	4.1	2.0	2.1
Chest disease	2.1	1.5	0.6
Heart disease	4.0	2.7	1.3
Frailty	2.8	1.7	1.1
Other	8.2	6.4	1.8

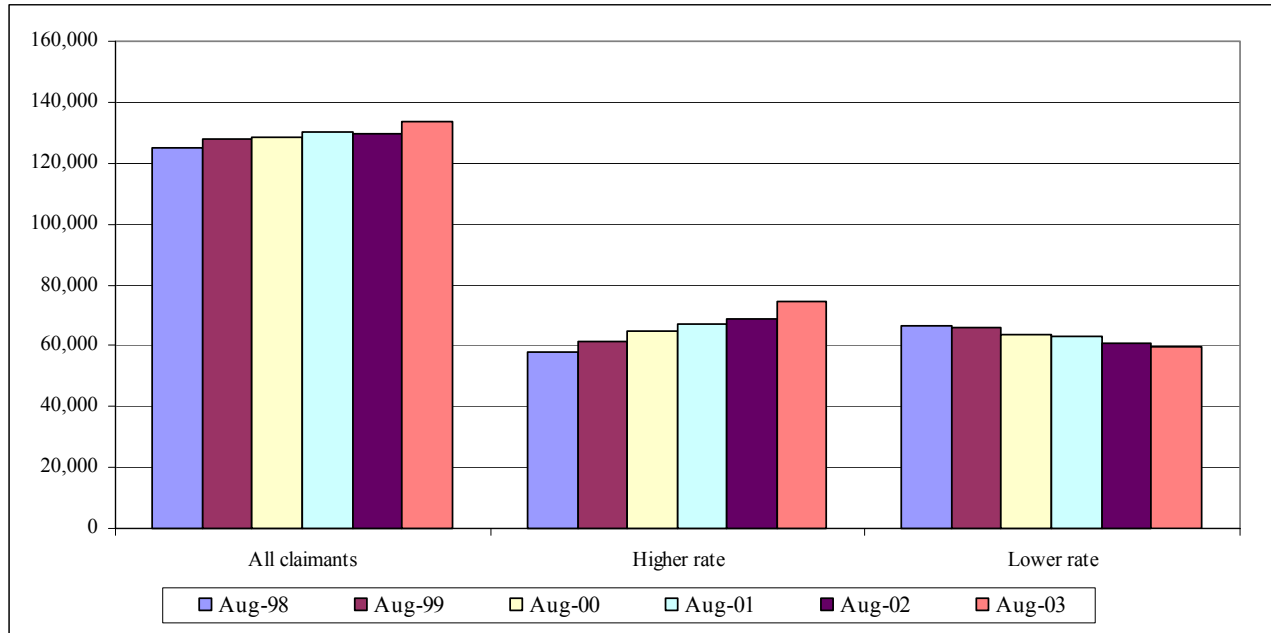
Source: Department for Work and Pensions, IAD Information Centre, August 2003

G5 Allowances of Attendance Allowance by Rate, August 1998 to August 2003¹⁷

	Aug-98		Aug-99		Aug-00		Aug-01		Aug-02		Aug-03	
	000s	%	000s	%	000s	%	000s	%	000s	%	000s	%
All allowances	124.8	100	127.7	100	128.7	100	130.0	100	129.5	100	133.8	100
Higher rate	58.1	47	61.5	48	64.9	50	67.2	52	68.6	53	74.4	56
Lower rate	66.7	53	66.2	52	63.8	50	62.9	48	60.9	47	59.4	44

Source: Department for Work and Pensions, IAD Information Centre.

Chart G1 Allowances of Attendance Allowance by Rate, August 1998 to August 2003



¹⁷ From November 2002, the methodology for producing these figures was changed to allow statistics to be published much sooner. This has resulted in a small increase in the reported caseload. This is because some cases which have actually terminated but have not yet been updated on the computer system are now included.

SECTION H: CARER'S ALLOWANCE (Previously Invalid Care Allowance)

Carer's Allowance (CA) is a **non-contributory, taxable** benefit. It is for men and women who:

- Look after a severely disabled person for at least 35 hours a week,
- Are not gainfully employed (i.e. not earning more than the lower earnings limit per week after certain deductions), and
- Are not in full-time education.

The severely disabled person must be getting either:

- The higher or middle rate of Disability Living Allowance care component, or
- Attendance Allowance, or
- Constant Attendance Allowance at the maximum rate under the War Pensions or Industrial Injuries Scheme.

Someone who gets CA can have extra money added on for their dependants. From April 2003 child dependency increases were abolished for new claims to Carer's Allowance, Incapacity Benefit, State Pension and Bereavement Benefit. See Annex 1 for further details.

In October 2002, the barrier that prevents people aged 65 or over from claiming CA was removed when the upper age limit to claim the benefit was abolished.

You can obtain further information on CA from the following URL address:
http://www.dwp.gov.uk/lifeevent/benefits/carers_allowance.asp

The bulletin detailing comparable GB statistics on Carers Allowance is at the following URL address:
http://www.dwp.gov.uk/asd/asd1/ca/ca_quarterly_statistics_aug03.asp

Main Findings

- 40.6 thousand people were receiving Carer's Allowance in Scotland as at August 2003.
- There were 10 claimants per 1,000 population aged 16 and over in Scotland.
- At a local authority level, East Ayrshire and Glasgow showed the highest rate of 14 per 1,000 population while Shetland Islands showed the lowest rate of 4.

H1 Allowances of Carer's Allowance by Local Authority: Scotland, August 2003

	Number of Allowances (000s)	Allowances per 1,000 population aged 16+
Scotland	40.6	10
Aberdeen City	0.9	5
Aberdeenshire	1.3	7
Angus	0.8	9
Argyll and Bute	0.6	8
Clackmannanshire	0.5	13
Dumfries and Galloway	1.3	11
Dundee City	1.3	11
East Ayrshire	1.4	14
East Dunbartonshire	0.6	7
East Lothian	0.6	9
East Renfrewshire	0.5	7
Edinburgh, City of	2.6	7
Eilean Siar	0.2	10
Falkirk	1.3	11
Fife	2.8	10
Glasgow City	6.6	14
Highland	1.6	10
Inverclyde	0.7	11
Midlothian	0.6	10
Moray	0.6	9
North Ayrshire	1.3	12
North Lanarkshire	3.2	12
Orkney Islands	0.1	8
Perth and Kinross	0.8	7
Renfrewshire	1.3	9
Scottish Borders	0.6	7
Shetland Islands	0.1	4
South Ayrshire	0.9	10
South Lanarkshire	2.7	11
Stirling	0.6	9
West Dunbartonshire	1.0	13
West Lothian	1.3	11

Source: Department for Work and Pensions, IAD Information Centre, August 2003

SECTION I: COUNCIL TAX BENEFIT

Council Tax Benefit (CTB) is an **income-related** benefit, administered by Local Authorities, designed to help people on low incomes pay their council tax. Generally, it mirrors the Housing Benefit scheme in the calculation of claimants' applicable amount, resources and deductions in respect of any non-dependants. There are two types of Council Tax Benefit:

- Main Council Tax Benefit; and
- Second Adult Rebate

Main Council Tax Benefit can help people who are liable to pay council tax whether in or out of work. It is paid by rebating a person's council tax bill. Those receiving Income Support/JSA(IB) can get up to 100% help, subject to any non-dependant deductions that may be appropriate. People not in receipt of Income Support/JSA(IB) have their benefit assessed in a similar way to Housing Benefit, but the maximum Council Tax Benefit is reduced by 20% of any net income above their applicable amount. People who are liable for council tax but who have capital in excess of £16,000 are not entitled to Council Tax Benefit.

Help is also available to people who are solely liable for the tax and who have a second adult in their household who would normally be expected to contribute to the council tax bill but cannot afford to do so. These are called Second Adult Rebates and they are assessed on the basis of the financial circumstances of the second adult, not of those of the liable tax payer. Rebates of up to 25% may be awarded.

Where a person is entitled to both maximum Council Tax Benefit and second adult rebate, the Local Authority is required to make a "better buy" calculation and award the liable person whichever amount of benefit is the greater.

Full time students are not generally liable for council tax because most live in accommodation that is exempt. Where liability does arise, Council Tax Benefit is not payable on the same grounds as for Housing Benefit (except to the same prescribed vulnerable groups).

If a person lives in a property valued in bands F, G or H the Council Tax Benefit may be restricted to that for a band E property.

You can obtain further information on Council Tax Benefit from the following URL address:

http://www.dwp.gov.uk/lifeevent/benefits/council_tax_benefit.asp

The bulletin detailing comparable GB statistics on Council Tax Benefit can be found at the following URL address: http://www.dwp.gov.uk/asd/asd1/hb_ctb/ht_ctb_quarterly_aug03.asp

Main Findings

- There were 526.4 thousand recipients¹⁸ of Council Tax Benefit in Scotland as at August 2003, representing a rate of 24% of all households.
- At local authority level, Glasgow City had the highest rate at 40% – well above the next highest rate of 35% in West Dunbartonshire. The lowest rates were in Aberdeenshire, East Dunbartonshire, East Renfrewshire and Shetland where 13% of households were recipients.
- Almost two-thirds (66%) of CTB recipients were also in receipt of Income Support or income based Jobseeker's Allowance.
- The number of recipients of Council Tax Benefit at August 2003 (523.9 thousand) was 12% lower than at August 1998 (597.6 thousand).

¹⁸ Excludes those on second adult rebates.

I1 Recipients of Council Tax Benefit, with or without IS/JSA(IB) by Local Authority: Scotland, August 2003^{19,20}

	All Recipients ²¹ (000s)	Recipients as % of all households ²²	Also in receipt of IS or JSA (IB) (000s)	Not in receipt of IS or JSA (IB) (000s)
Scotland	523.9	24	345.6	178.3
Aberdeen City	16.9	17	11.4	5.5
Aberdeenshire	11.7	13	7.6	4.1
Angus	8.5	18	6.0	2.5
Argyll and Bute	7.3	19	4.8	2.5
Clackmannanshire	5.3	26	3.5	1.8
Dumfries and Galloway	12.2	19	8.3	3.9
Dundee City	20.2	30	13.9	6.2
East Ayrshire	14.4	29	9.6	4.8
East Dunbartonshire	5.7	13	3.6	2.0
East Lothian	7.1	19	4.4	2.8
East Renfrewshire	4.6	13	2.9	1.7
Edinburgh, City of	40.1	20	23.6	16.4
Eilean Siar	2.6	23	1.9	0.7
Falkirk	14.2	23	9.6	4.6
Fife	31.3	21	19.5	11.8
Glasgow City	107.7	40	73.0	34.7
Highland	16.4	18	11.5	4.9
Inverclyde	11.2	30	7.5	3.7
Midlothian	6.4	19	3.7	2.7
Moray	5.5	15	3.5	2.0
North Ayrshire	15.7	27	10.7	4.9
North Lanarkshire	38.5	29	27.0	11.4
Orkney Islands	1.2	15	0.8	*0.4
Perth and Kinross	8.6	15	5.5	3.1
Renfrewshire	19.2	26	11.9	7.3
Scottish Borders	8.4	18	5.2	3.2
Shetland Islands	1.1	13	0.8	*0.3
South Ayrshire	10.7	22	7.1	3.5
South Lanarkshire	36.3	29	22.8	13.5
Stirling	6.5	18	4.3	2.2
West Dunbartonshire	14.3	35	9.7	4.5
West Lothian	14.5	22	9.8	4.8

Source: Department for Work and Pensions, IAD Information Centre, August 2003

¹⁹ The data refer to people in receipt of Council Tax Benefit which may be a single person a couple or a family. More than one claimant can live in one property, for example two or more adults in a flat or house share arrangement.

²⁰ At GB level, approximately 80% of Housing Benefit recipients also receive Council Tax Benefit.

²¹ Excludes those on second adult rebates.

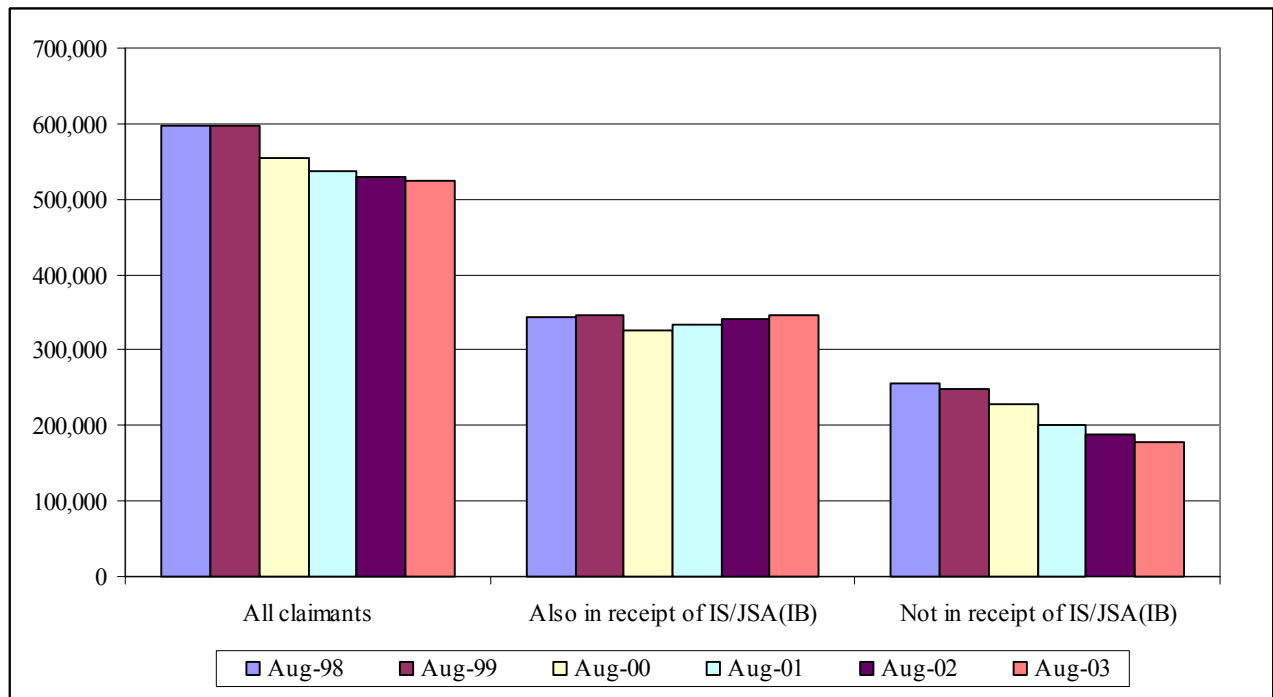
²² Based on number of households as at April 2001 Census.

I2 Council Tax Benefit Recipients^{19,21} with or without IS/JSA(IB), August 1998 to August 2003

	Aug-98		Aug-99		Aug-00		Aug-01		Aug-02		Aug-03	
	000s	%	000s	%	000s	%	000s	%	000s	%	000s	%
Total	597.6	100	596.4	100	555.1	100	535.9	100	528.8	100	523.9	100
Also in receipt of IS/JSA(IB)	342.5	57	347.0	58	327.0	59	334.0	62	341.9	65	345.6	66
Not in receipt of IS/JSA(IB)	255.1	43	249.4	42	228.1	41	201.9	38	186.9	35	178.3	34

Source: Department for Work and Pensions, IAD Information Centre.

Chart I1 Council Tax Benefit Recipients, with or without IS/JSA(IB), August 1998 to August 2003



¹⁹ The data refer to people in receipt of Council Tax Benefit which may be a single person a couple or a family. More than one claimant can live in one property, for example two or more adults in a flat or house share arrangement.

²¹ Excludes those on second adult rebates.

SECTION J: HOUSING BENEFIT

Housing Benefit (HB) is administered by Local Authorities. People on Income Support or income based Jobseeker's Allowance with responsibility for rent qualify for maximum Housing Benefit. Other people, with income above Income Support levels, may also qualify. Their entitlement depends on the claimant's age and status, the number and age of dependent children, the level of rent payable (and eligible for benefit), and on the claimant's and dependants' capital and income. Full-time students ceased to be eligible for Housing Benefit from the academic year 1990-91, with a few exceptions (e.g. disabled students and student lone parents). Part-time students and partners of students are eligible to claim Housing Benefit.

Housing Benefit is administered either as a rebate (deduction from rent payable) for council tenants or an allowance (cash payment) for tenants of private landlords. Maximum entitlement is the full amount of eligible rent.

For most tenants in the private rented sector, the eligible rent is limited to the local reference rent (LRR), which represents the general level of rents in the locality for the size and type of property. For most single people under 25 in the private rented sector the eligible rent is restricted to the single room rent (SRR), which represents the general level of local rents for a single room with shared use of a living room, bathroom, toilet and kitchen facilities. Where either the LRR or SRR applies, local authorities have discretion to pay more where they consider the claimant is in need of further financial assistance.

These limits do not apply to tenants in social housing or to those who have been claiming since before 2 January 1996. For these claimants, the eligible rent can only be restricted if the accommodation is either unreasonably expensive or overlarge for the claimant's needs.

HB and CTB may be received for a further 4 weeks by people aged under 60 when they start working full time following a period of at least 6 months being unemployed, on a Government Training Scheme or on Income Support as a lone parent or carer. This is called an "Extended Payment".

You can obtain further information on Housing Benefit from the following URL address:

http://www.dwp.gov.uk/lifeevent/benefits/housing_benefit.asp

The bulletin detailing comparable GB statistics on Housing Benefit can be found at the following URL address: http://www.dwp.gov.uk/asd/asd1/hb_ctb/ht_ctb_quarterly_aug03.asp

Main Findings

- There were 434.1 thousand recipients²³ of Housing Benefit in Scotland as at August 2003. This represents a rate of 20% of all households. The equivalent rate for Great Britain was 16%.
- Amongst the local authorities, Glasgow City had the highest rate of recipients at 35%, whilst East Dunbartonshire had the lowest rate at 9% of the population.
- 72% of recipients were also in receipt of Income Support or income-based Jobseeker's Allowance
- The number of recipients of Housing Benefit has fallen steadily over the past few years, from 515.1 thousand at August 1998 to 434.1 thousand at August 2003.

²³ Excludes any Extended Payment cases.

**J1 Recipients of Housing Benefit, with or without IS/JSA(IB) by Local Authority:
Scotland, August 2003^{24,25}**

	All Recipients ²⁶ (000s)	Recipients as % of all households ²⁷	Also in receipt of IS or JSA (IB) (000s)	Not in receipt of IS or JSA (IB) (000s)
Scotland	434.1	20	310.9	123.2
Aberdeen City	15.4	16	10.8	4.6
Aberdeenshire	9.6	11	6.6	3.1
Angus	7.1	15	5.2	1.9
Argyll and Bute	5.8	15	4.1	1.7
Clackmannanshire	4.6	22	3.2	1.4
Dumfries and Galloway	10.1	16	7.3	2.8
Dundee City	17.8	27	13.0	4.8
East Ayrshire	12.1	24	8.6	3.5
East Dunbartonshire	3.9	9	2.8	1.1
East Lothian	5.9	15	3.9	2.0
East Renfrewshire	3.4	10	2.4	1.0
Edinburgh, City of	31.9	16	21.5	10.4
Eilean Siar	1.2	10	0.9	0.3
Falkirk	12.6	20	8.7	3.9
Fife	26.6	18	18.0	8.6
Glasgow City	95.7	35	69.3	26.4
Highland	12.9	14	9.5	3.5
Inverclyde	9.4	26	6.6	2.8
Midlothian	5.1	15	3.3	1.8
Moray	4.4	12	3.0	1.4
North Ayrshire	13.3	23	9.6	3.7
North Lanarkshire	27.4	21	23.9	3.5
Orkney Islands	0.8	10	0.6	0.3
Perth and Kinross	7.4	13	5.1	2.3
Renfrewshire	16.0	21	10.9	5.1
Scottish Borders	7.2	15	4.7	2.5
Shetland Islands	0.9	10	0.7	0.3
South Ayrshire	8.5	18	6.2	2.4
South Lanarkshire	27.3	22	19.6	7.6
Stirling	5.4	15	3.7	1.6
West Dunbartonshire	11.8	29	8.7	3.1
West Lothian	12.7	20	9.0	3.7

Source: Department for Work and Pensions, IAD Information Centre, August 2003

²⁴ data refer to people in receipt of Housing Benefit which may be a single person a couple or a family. More than one claimant can live in one property, for example two or more adults in a flat or house share arrangement.

²⁵ At GB level, approximately 80% of Housing Benefit recipients also receive Council Tax Benefit.

²⁶ Excludes any Extended Payment cases.

²⁷ Based on number of households as at April 2001 Census.

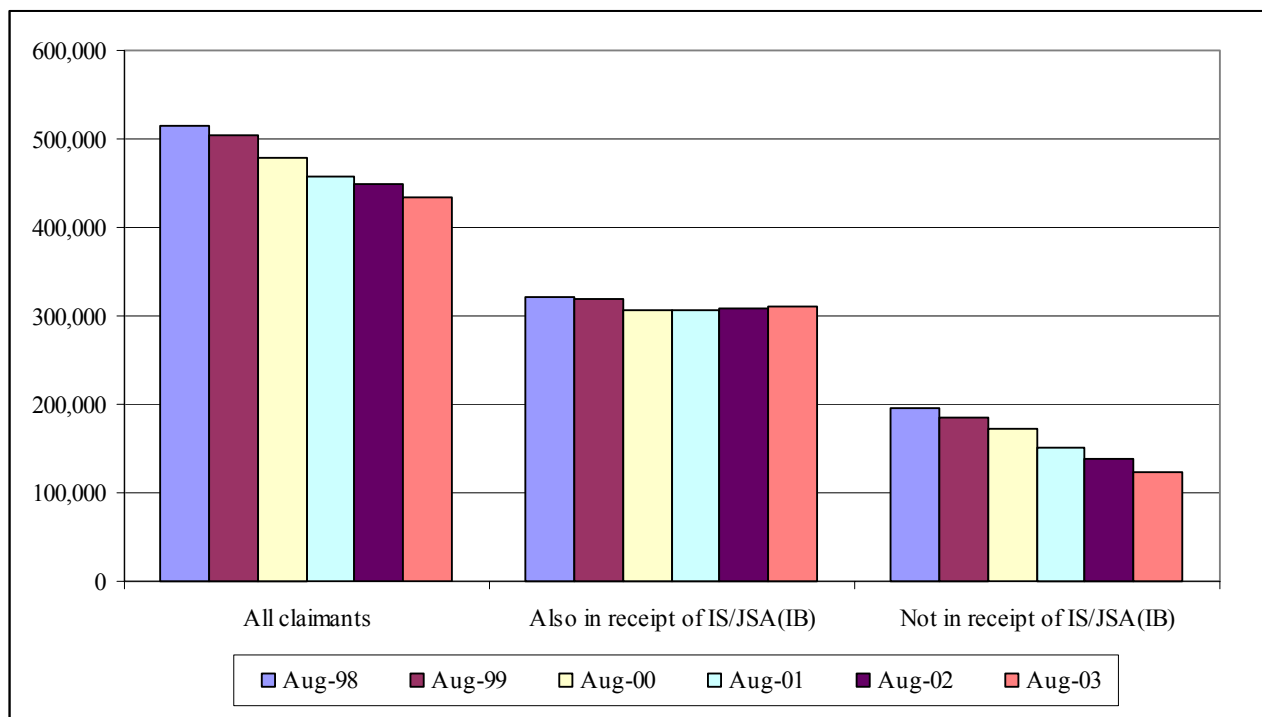
J2 Housing Benefit Recipients, with or without IS/JSA(IB), August 1998 to August 2003

Thousands/column %s

	Aug-98		Aug-99		Aug-00		Aug-01		Aug-02		Aug-03	
	000s	%	000s	%	000s	%	000s	%	000s	%	000s	%
Total	515.1	100	504.8	100	479.2	100	457.6	100	448.2	100	434.1	100
Also in receipt of IS/JSA(IB)	320.4	62	319.4	63	306.2	64	306.8	67	309.0	69	310.9	72
Not in receipt of IS/JSA(IB)	194.8	38	185.4	37	173.0	36	150.8	33	139.2	31	123.2	28

Source: Department for Work and Pensions, IAD Information Centre.

Chart J1 Housing Benefit Recipients, with or without IS/JSA(IB), August 1998 to August 2003



SECTION K: WORKING TAX CREDIT AND CHILD TAX CREDIT

The Child and Working Tax Credits replaced Working Families' Tax Credit (WFTC) and Disabled Person's Tax Credit (DPTC) and the Childrens Tax Credit in April 2003. This is the first time figures on the Child and Working Tax Credits have been included in this report.

Child Tax Credit (CTC) provides support to families for the children (up to the 31 August after their 16th birthdays) and the "qualifying" young people (i.e. in full-time non-advanced education until their 19th birthdays) for which they are responsible. It is paid in addition to Child benefit.

Working Tax Credit (WTC) tops up the earnings of families on low or moderate incomes. People working for at least 16 hours a week can claim it if they (a) are responsible for at least one child or qualifying young person, (b) have an illness or disability which puts them at a disadvantage in getting a job or (c) returned to work on or after 6 April 2003 aged at least 50 after a period of at least six months receiving out-of-work benefits. Other adults also qualify if they are aged at least 25 and work for at least 30 hours a week.

CTC and WTC are claimed by individuals, or jointly by couples. These claimants are described as "families" in this publication, whether or not they have children. These tables cover families who were eligible for, CTC or WTC at 5 January 2004 (the "reference date") and who had awards at that date.

The coverage of out-of-work families with children

A family is defined as being in work at the reference date if one of the adults, or the single adult, works for at least 16 hours per week. Table K1 covers both in-work and out of-work families. Tables K2 and K3 cover only families in work.

Out of work families with children receive the same level of child support whether via CTC or via out of work benefits - Income Support or income-based Jobseeker's Allowance. (The child premia in these benefits were increased from April 2003 to bring them into line with the CTC child element).

These families fall into one of three groups:

- A. Receiving CTC but not benefits (*not eligible for the benefits; or CTC and other income reduces the benefit to zero*);
- B. Receiving CTC and benefits (*the benefit is reduced by CTC, but not to zero*)
- C. Receiving benefits but not CTC.

The total 'awards' figure include both families with positive awards and families with zero awards (tapered to zero), based on their circumstances at the reference date and their annual income reported by that date. Families with zero awards may have positive awards based on their circumstances at other times in the year, and may finally qualify for positive annual awards.

'Recipient' figures include only families with positive awards at the reference date.

You can obtain further information on Tax Credits from the following URL address:

<https://www.taxcredits.inlandrevenue.gov.uk/Home.aspx>. The latest bulletin detailing UK statistics on Child and Working Tax Credits can be found at the same URL address.

A breakdown of UK and Scotland figures on Child and Working Tax Credits by local authority area and by parliamentary constituency can be found at the following URL address: [Child and Working Tax Credit Statistics - Geographical Analyses - July 2003](#)

Main Findings

- There were 0.5 million families with Child Tax Credit or Working Tax Credit awards, or with children and receiving out-of-work benefits in Scotland at 5 January 2004.
- 419.2 thousand of these families were in work, 404.5 were receiving a positive award at 5 January 2004.
- There were 381.4 thousand families receiving Child Tax Credit, 203.4 with awards above the family element.
- 419.2 thousand of these families were in work, 404.5 were receiving a positive award at 5 January 2004.
- There were 145.1 thousand recipients of both Working Tax Credit and Child Tax Credit and 23.2 thousand receiving Working Tax Credit only.
- 28.5 thousand families were benefiting from the childcare element at 5 January 2004, with an average award of £46.12 a week.

K1: Families with CTC or WTC award, or with children and receiving out-of-work benefits, July 2003, October 2003, January 2004

	Jul-03	Oct-03	Jan-04
<i>Millions</i>			
Total awards or on benefits²⁸	0.5	0.5	0.5
Families not in work	0.1	0.1	0.1
Families in work	0.4	0.4	0.4
<i>Thousands</i>			
Total families in work	379.5	407.0	419.2
With children	358.3	377.6	385.4
WTC and CTC	135.7	141.0	145.1
CTC only	219.2	232.7	236.3
Zero award	3.4	3.9	4.0
Without Children	21.3	29.4	33.9
WTC	14.5	20.0	23.2
Zero award	6.8	9.4	10.7
Total families in work with positive awards	369.4	393.7	404.5

K2: In-work families with positive awards; recipients and their children, January 2004

	<i>Thousands</i>	
	Number of families	Number of children
Total in work recipients	404.5	667.1
With children		
WTC and CTC	145.1	248.6
CTC only		
with CTC above family element	58.3	122.9
with CTC equal to family element	167.1	276.3
with CTC below family element	10.9	19.4
Without children (WTC only)	23.2	-

²⁸ These numbers do not fall under National Statistics. They include families receiving out-of-work benefits, which are projections to the reference date of the numbers of families with children receiving these benefits, based on data for August 2003 and broad assumptions about trends since then. These numbers, and the totals, are therefore heavily rounded.

K3: In-work families with CTC or WTC awards by Local Authority, January 2004

	<u>Total (with or without children)</u>			<u>Recipients with children</u>			
	<u>All with awards</u>		<u>Recipients (with positive awards)</u>	<u>With CTC above the family element</u>		<u>With CTC at or below the family element</u>	
	<u>Number</u>	<u>Range²⁹</u>		<u>Families</u>	<u>Children</u>	<u>Families</u>	<u>Children</u>
SCOTLAND	419.2		404.5	203.4	371.4	177.9	295.7
Aberdeen City	13.2	± 0.52	12.8	5.9	10.6	6.4	10.3
Aberdeenshire	19.9	± 0.63	19	7.8	15.5	10.3	17.9
Angus	9.6	± 0.45	9.3	4.5	8.7	4.2	7.2
Argyll & Bute	7.2	± 0.38	7	3.6	6.6	3	5.1
Clackmannanshire	4.5	± 0.31	4.4	2.2	3.9	1.9	3.1
Dumfries and Galloway	13.8	± 0.52	13.2	7	13.3	5.2	8.9
Dundee City	12.2	± 0.5	11.8	6.7	11.4	4.2	6.9
East Ayrshire	11.2	± 0.48	10.8	5.5	10	4.4	7.1
East Dunbartonshire	8.7	± 0.42	8.4	3.3	6	4.9	8.6
East Lothian	7.8	± 0.4	7.5	3.7	6.9	3.6	5.9
East Renfrewshire	7.4	± 0.38	7.1	2.8	5	4.2	7.3
Edinburgh, City of	25.8	± 0.73	25	12.2	22.1	11.7	19.5
Eilean Siar	2.4	± 0.22	2.3	1.3	2.5	0.9	1.6
Falkirk	13.8	± 0.52	13.3	6	10.6	6.7	11
Fife	31	± 0.8	29.9	15.5	28.5	12.9	21
Glasgow City	38.8	± 0.89	37.4	23.1	39.9	11.7	18.4
Highland	18.3	± 0.62	17.8	9.6	18.5	7.1	12.3
Inverclyde	7.8	± 0.4	7.3	3.8	6.7	2.9	4.8
Midlothian	7.2	± 0.38	7	3.7	6.9	3.1	5.4
Moray	8.6	± 0.42	8.3	3.9	7.6	3.8	6.3
North Ayrshire	12.2	± 0.5	11.7	6.5	11.4	4.5	7.4
North Lanarkshire	31.7	± 0.8	30.5	15.4	28	13.4	21.8
Orkney Islands	1.9	± 0.2	1.8	1	2	0.7	1.2
Perth and Kinross	11.9	± 0.48	11.5	5.8	10.6	4.9	8.3
Renfrewshire	15	± 0.56	14.5	6.8	12.3	6.8	11.2
Scottish Borders	9.7	± 0.45	9.4	5	9.8	3.8	6.2
Shetland Islands	1.8	± 0.2	1.8	0.7	1.6	1	1.9
South Ayrshire	9.1	± 0.44	8.8	4.3	7.4	4	6.6
South Lanarkshire	26.4	± 0.73	25.5	11.8	20.9	12.5	20.5
Stirling	6	± 0.36	5.7	2.5	4.7	2.8	4.8
West Dunbartonshire	8.5	± 0.42	8.2	4.4	8	3.3	5.3
West Lothian	15.8	± 0.56	15.3	7.4	13.6	7.3	12

²⁹ Subtract and add this to obtain the boundaries of the 95% confidence interval for the number (see Annex 1, data sources for further details).

GLOSSARY OF CONVENTIONS AND TERMS

Conventions

- All figures in sections A to J are rounded to the nearest hundred and expressed in thousands.
- “-” indicates figures are nil or negligible.
- Local authorities are assigned by matching postcodes against the relevant Office for National Statistics postcode directory.
- Where figures are preceded by an asterisk, they are based on a small number of sample cases and greater care should be taken with their interpretation (see data source below).

General Terms

(terms relevant to specific benefits are included in the introduction to individual chapters)

Child: This generally encompasses persons aged under 16 and also persons aged between 16 and 18 inclusive, for whom the parent is still receiving Child Benefit. However, Table A2 in this report only covers children who are aged under 16.

Couple: Two people either married or living together as husband and wife.

Dependant: Dependants are normally defined in the same way as children above.

Family type: Whether single or couple, with or without dependants.

Lone parent: A single parent aged under 60 and not in the disabled group.

Partner: One of a married or unmarried couple, living together.

Single: A claimant who is not living as one of a couple.

Single parent: A claimant without a partner but with one or more dependants.

Statistical group: This gives an indication of the main reason why each individual is in the benefit system (for example, aged 60 or over, lone parents, disabled and other).

ANNEX 1: TECHNICAL DETAILS

1. Impact of the introduction of New Tax Credits on benefit figures

Benefit figures in this, and future reports are affected by the introduction of Child Tax Credit (CTC) in April 2003. The main changes are:

- Child dependency increases paid with non-income related benefits are abolished for new claims to State Pension, Bereavement Benefit, Incapacity Benefit and Carer's Allowance from April 2003.
- CTC will replace the child elements of Income Support (IS) and income-based Jobseeker's Allowance (JSA(IB)). This will happen from April 2004 onwards.

Dates when there may be particular changes in the figures are:

- April 2003, when child dependency increases paid with non-income related benefits were abolished for new claims.
- October 2003, when families on Minimum Income Guarantee (MIG) with children will have child elements migrated to CTC.
- Financial year 2004/05, when families on Income Support and income-based Jobseeker's Allowance will have child elements migrated to CTC.

A small number of IS/ JSA(IB) recipients will no longer be eligible once CTC is in payment. This is because CTC payments will raise total income above the IS/JSA(IB) threshold, or other income exceeds the threshold once child allowances are removed.

It is therefore advised that customers exercise caution when performing year on year comparisons, or when comparing with the previous quarter.

2. Data Sources

Figures on benefits (in sections A to J) are supplied by the Department for Work and Pensions. Figures on Tax Credits (in section K) are supplied by the Inland Revenue.

All figures in sections A to G are based on a 5% sample of cases and are thus subject to sampling error. The figures in section H are from a 100% sample. The figures in sections I and J are collected directly from local authorities and may include some estimated data. The Tax Credit data in section K are based on a sample of 10% of single adults (with or without children) and 20% of such couples. Each figure is derived by weighting the relevant sample cases by the inverses of these sampling fractions. 95% confidence intervals of the estimates are given in the local authority table.

'Neighbourhood Statistics' are a collection of data that provide wide-ranging information on social conditions in neighbourhoods. They have been developed to provide essential information to underpin the National Strategy for Neighbourhood Renewal. A web-based statistical system for small geographical areas has been developed to disseminate information on population, access to services, community well-being, crime, economic deprivation, education skills & training, health, housing, the physical environment and work deprivation. DWP have provided a range of detailed benefits information for the Scottish Neighbourhood Statistics System (SNS) (<http://www.sns.gov.uk/>) at Ward, SIP and Parliamentary Constituency level. Ward level data for 2001 and 2002 are expected to be available on the SNS website by early Spring. Further information for the UK is available on the Office For National Statistics Neighbourhood Statistics website at <http://neighbourhood.statistics.gov.uk>.

ANNEX 2 : SCOTTISH EXECUTIVE STATISTICAL SERVICES

Our aim

The aim of the Statistical Service is to provide relevant and reliable statistical information, analysis and advice that meet the needs of government, business and the people of Scotland.

Our Objectives

- 1. To ensure that all statistics work is relevant to meeting user needs by**
 - Improving the range of statistics and analysis we produce for users inside and outside of government (including for key cross cutting policy areas such as the economy, social justice, area regeneration, equality and rural issues)
 - Reviewing and where practicable improving timeliness.
 - Providing more statistics disaggregated by age, gender, ethnicity and other characteristics.
 - Developing more data for small areas through the Neighbourhood Statistics project
 - Maintaining comparability of statistics across the UK.
- 2. To make better use of our statistics by**
 - Contributing more directly to policy processes inside and where possible outside government. These include community planning, performance information, measurement of government targets, better policy making and modernising government objectives.
 - Improving access to and presentation of data and analysis, through better use of the Web, improved publications and improved systems for holding and accessing background data.
 - Improving the advice provided on statistics to Ministers and senior management within the Executive.
- 3. To develop the reliability and integrity of official statistics by**
 - Assuring and improving quality as an integral part of data collection and analysis and through regular reviews in line with National Statistics quality strategy.
 - Developing statistical methods, systems and classifications
 - Maintaining and promoting integrity through implementation of the National Statistics Code of Practice and related protocols.
- 4. To ensure the efficient and effective delivery of statistics products and services by**
 - Making full use of all sources including administrative sources.
 - Minimising the burden on data providers through Survey Monitoring & Advice
 - Ensuring value for money.
 - Employing staff with the necessary skills and ensuring development of expertise amongst existing staff.
 - Ensuring effective use of Information and Communications Technology.
 - Managing, promoting and upholding the integrity of the statistics profession.
- 5. To plan effectively and work together by**
 - Producing and implementing an annual Scottish Executive Statistics Plan.
 - Developing more co-ordinated working arrangements with other analytical services in and out of the Executive.
 - Working with the rest of the Government Statistical Service to develop joint approaches/solutions where appropriate.
 - Improving the involvement of users and providers, working on a partnership basis wherever possible.

This is a National Statistics publication

This Statistics Release has been produced to the standards set out in the National Statistics Code of Practice and Release Practice Protocol.

http://www.statistics.gov.uk/about_ns/cop/default.asp

National Statistics are produced to high professional standards. They undergo regular quality assurance reviews to ensure that they meet customer needs. They are produced free from any political interference.

Details of pre-release access will be provided in the Scottish Executive Statistics Website under 'Forthcoming Releases'.

Correspondence and enquiries

Enquiries on Benefits and Tax Credits in Scotland, Report for August 2002 should be addressed to:

Julie Bright
Office of the Chief Economic Adviser
Scottish Executive Office of the Permanent Secretary Dept.
4 Floor East Rear, St Andrews House
EDINBURGH EH1 3DG
Telephone: (0131) 244 2583; Fax: (0131) 244 2824
e-mail: julie.bright@scotland.gsi.gov.uk

General enquiries on Scottish Executive statistics can be addressed to:

Kevin Meenan
Central Statistics Unit
Scottish Executive
3rd Floor West Rear, St Andrews House
EDINBURGH EH1 3DG
Telephone: (0131) 244 0442; Fax: (0131) 244 0335
e-mail: statistics.enquiries@scotland.gsi.gov.uk

Advice on specific areas of Scottish Executive statistical work can be obtained from staff at the telephone numbers given below:

Scottish Executive Statistics contacts

Schools – qualifications	(0131) 244 0313
Schools – pupils and teachers	(0131) 244 0309
Further and Higher Education	(0141) 242 0273
The Economy	(0131) 244 2234
Labour market	(0141) 242 5446
Business	(0141) 242 5446
Income, Tax and Benefits	(0131) 244 2583
Local government finance	(0131) 244 7033
Environment, planning & local government staffing	(0131) 244 0445
Equality	(0131) 244 0442
Housing	(0131) 244 7236
Transport	(0131) 244 7255
Health	(0131) 244 3432
Community Care	(0131) 244 3777
Social Justice	(0131) 244 0442
Scottish Executive personnel	(0131) 244 3926
Agricultural census and labour force	(0131) 244 6150
Fisheries	(0131) 244 6441
Courts and law	(0131) 244 2227
Recorded crime and prisons	(0131) 244 2225

Other contacts for Scottish statistics

Forestry Commission	(0131) 314 6337
The Scottish Funding Councils for Higher and Further Education	(0131) 313 6575
General Register Office for Scotland - Vital statistics and publications	(0131) 314 4243
- Population statistics, census statistics or digital boundary products	(0131) 314 4254

For **general enquiries about National Statistics** in the United Kingdom Government contact the National Statistics Public Enquiry Service on

020 7533 5888

minicom: 01633 812399

Email: info@statistics.gov.uk

Fax: 01633 652747

Letters: Room DG/18, 1 Drummond Gate,
LONDON SW1V 2QQ

You can also find National Statistics on the internet - go to www.statistics.gov.uk

Current staff names, e-mail addresses and the publications listed below as well as a range of other statistical publications can be found on the Scottish Executive Web site at www.scotland.gov.uk/stats.

Further information on the General Register Office for Scotland is available on the website www.gro-scotland.gov.uk

Complaints and suggestions

If you are not satisfied with our service, please write to the Chief Statistician, Mr Rob Wishart, 4 Floor East Rear, St Andrews House, Edinburgh, EH1 3DG, Telephone: (0131) 244 0302, e-mail rob.wishart@scotland.gov.uk. We also welcome any comments or suggestions that would help us to improve our standards of service.

Crown Copyright

Brief extracts from the Crown Copyright material in this publication may be reproduced provided the source is fully acknowledged.

