

# The Royal Highland

## Education Trust

*assisting teachers*

*and pupils in their*

*studies of the*

*Scottish countryside*

*and its environment*

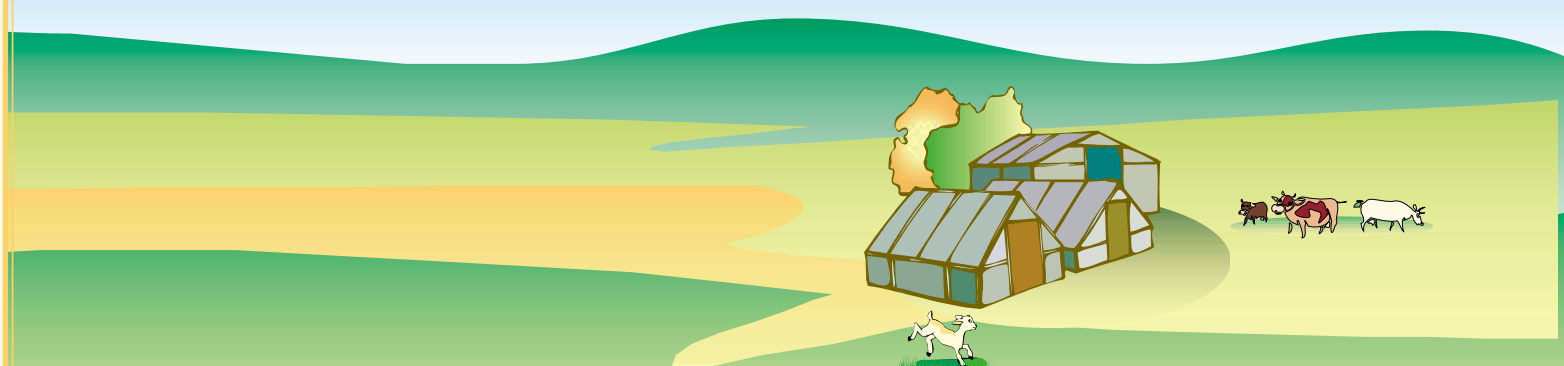


**TAKING THE  
CLASSROOM  
TO THE  
COUNTRYSIDE**

*Patron: HRH The Princess Royal*



**THE ROYAL HIGHLAND EDUCATION TRUST**



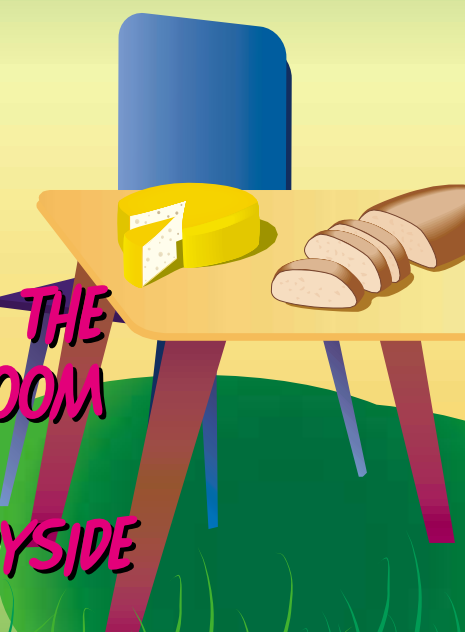
**The Royal Highland  
Education Trust  
Royal Highland Centre  
Ingliston  
Edinburgh  
EH28 8NF**

**Tel: 0131 335 6227  
Fax: 0131 333 5236**

**e-mail: [rhet@rhass.org.uk](mailto:rhet@rhass.org.uk)**

**[www.rhet.rhass.org.uk](http://www.rhet.rhass.org.uk)**

**TAKING THE  
CLASSROOM  
TO THE  
COUNTRYSIDE**



## Aims and Objectives

To provide a source of independent information about food, farming and the countryside, aimed to help children gain a better understanding of the role played by these industries in the Scottish Economy, environment and way of life by reliable and balanced information on farming and rural issues, by:

- Providing resource materials and other activities which will assist teachers and pupils in their studies of the Scottish countryside and its environment, to help them make informed decisions about rural issues;

and

- promoting a better understanding of the changes taking place in rural Scotland and its environment.

## Farm Visits For Schools

People have become increasingly distanced from understanding food production and the role of farming. RHET aims to promote more, and better quality educational visits to farms by making it easier for teachers and farmers to organise visits. RHET can provide support materials and practical assistance for schools as they plan their outing. Visiting a farm is a wonderful learning experience for children and teachers alike.

## Classroom Resources

RHET has produced two high quality classroom resources. Looking At The Farm is a differentiated teaching pack that is structured to meet the requirements of the Scottish curriculum. The Working Countryside CD-ROM is fully interactive and allows children to learn independently about topics such as wildlife, food production and conservation.

## The RHET network

RHET has established a network of local groups around Scotland, which operate side by side with RHET to deliver their common aims on a local basis. RHET provides the local groups, known as Countryside Initiatives, with strategic advice and practical administrative assistance, along with access to, and co-development of, resource materials.

## Friends of RHET

RHET needs support from individuals and companies with an interest in the future of Scotland's countryside. Individual Friends will receive a bi-annual newsletter to update them on progress and achievements. In addition to receiving this newsletter, Corporate Friends will be listed and recognised in RHET's annual report.

## Classroom Speakers

There is a high demand from schools for farmers to speak to children about their work, particularly as it can sometimes be difficult for classes to visit the countryside. RHET has responded to this demand by producing a new booklet, 'Guidelines for Speakers' and is developing training courses for farmers throughout Scotland.

## I'd like to learn more about...

- Farm Visits for Schools
- Classroom Speakers
- RHET Learning and Teaching Resources

Name.....

School.....

Address.....

.....

.....

Post Code.....

Tel. No.....

Email.....

**The Royal Highland  
Education Trust  
Royal Highland Centre  
Ingliston  
Edinburgh EH28 8NF  
Tel: 0131 335 6227  
Fax: 0131 333 5236  
e-mail: [rhet@rhass.org.uk](mailto:rhet@rhass.org.uk)**

**[www.rhet.rhass.org.uk](http://www.rhet.rhass.org.uk)**