



Statistics Publication Notice

Education Series

ISSN 1479-7569 (*online*)

revised¹ 21 July 2003

EXCLUSIONS FROM SCHOOLS, 2001/2002

The results of the survey on exclusions from schools are published today by the Scottish Executive Education Department. The results relate to the school year 2001/2002. Exclusions, in this context, include both temporary exclusions and pupils removed from the register.

Most of the data refers to *cases* of exclusion, which should not be confused with the *number of pupils* excluded, as some pupils were excluded more than once during the year.

The main findings are:

- During 2001/2002 there were 37,442 exclusions from local authority primary, secondary and special schools in Scotland, a decrease of three per cent from the 2000/2001 figure. 85 per cent were from secondary schools, twelve per cent were from primary schools, and three per cent were from special schools. (Tables 1, 2a, 2b and 2c)
- Over 99 per cent of all exclusions were temporary. In 332 cases pupils were removed from the register of the school, an increase of 3 per cent from the 2000/2001 figure of 322. (Table 1)
- Overall, male pupils accounted for 81 per cent of all exclusions. (Chart 1)
- Exclusion rates peaked during S3, with 172 exclusions per 1,000 pupils. (Chart 2)
- About 87% of all temporary exclusions lasted one week or less. (Table 3).
- During 2001/2002, 20,596 pupils (three per cent of pupils) were temporarily excluded from school. Of these, almost two-thirds were

¹ This document has been revised since it was originally published in February 2003 to include exclusion rates by ethnicity (table 5b), and to use amended pupil numbers for calculation of rates (tables 8 and 9).

excluded on one occasion only and one fifth were temporarily excluded twice. 52 pupils were temporarily excluded ten times or more. (Table 4)

- Of all exclusions with known circumstances, 24 per cent were for general or persistent disobedience; 17 per cent involved verbal abuse of members of staff; and 13 per cent involved physical abuse of fellow pupils. (Table 6)
- Of all exclusions: 45 per cent involved children entitled to free school meals; four per cent involved children with a Record of Needs and three per cent involved children looked after by the local authority. Comparison with the overall school population shows that pupils entitled to free school meals, or with a Record of Needs, or looked after by the Local authority, had higher exclusion rates than other pupils. (Table 7)
- Overall, there were 50 exclusions per 1,000 pupils from local authority primary, secondary, and special schools in Scotland in 2001/2002. The highest exclusion rates were in West Dunbartonshire (103 per 1,000), Dundee City (95 per 1,000) and Glasgow City (92 per 1,000). (Table 8)

TABLES

- Table 1 - Total number of exclusions from local authority primary, secondary and special schools, by type of exclusion, 1998/1999 to 2001/2002.
- Chart 1 - Total number of exclusions from local authority primary, secondary and special schools, by gender and year, 1998/99 to 2001/02.
- Chart 2 - Total number of exclusions from local authority primary, and secondary schools, by stage, 2001/02
- Table 2a - Exclusions from local authority primary schools, by stage and gender, 2001/2002.
- Table 2b - Exclusions from local authority secondary schools, by stage and gender, 2001/2002.
- Table 2c - Exclusions from local authority special schools, by gender, 2001/2002.
- Table 3 - Temporary exclusions by duration, 2001/2002.
- Table 4 - Exclusions by the number of times that pupils were temporarily excluded, 2001/2002.
- Table 5a - Total number of exclusions by ethnic background, 2001/2002.
- Table 5b - Estimates of exclusions per 1,000 pupils, by ethnicity, 2001/02.
- Chart 3 - Estimates of exclusions per 1,000 pupils, by ethnicity, 2001/02.
- Table 6 - Total number of exclusions, by circumstances, 2001/2002.
- Table 7 - Other information on exclusions, 2001/2002.
- Table 8 - Exclusions from local authority primary, secondary, and special schools, by type of exclusion and local authority, 2001/2002.
- Table 9 - Temporary exclusions from local authority primary, secondary and special schools, by different pupils temporarily excluded, and local authority, 2001/2002.

NOTES TO NEWS EDITORS

1. Under Circulars 10/93 and 1/95, local authorities are required each year to collect certain statistics from schools on exclusions. The statistics relate to half-days of temporary exclusions and number of pupils removed from the register (previously known as 'permanent' exclusions).
2. An exclusion is temporary when a pupil is excluded from a school but remains on the register of that school because they are expected to return when the exclusion period is completed. The term 'removed from the register' refers to a pupil who is excluded and their name removed from the school register. Such a pupil would then be educated at another school or via some other form of provision. The process of being removed and subsequently receiving education elsewhere can either take place with or without a break in school attendance.
3. In April 1998, the then Scottish Office issued Circular 2/98 to local authorities, informing them of a formal requirement to report, record and monitor additional information on exclusions from schools starting from the 1998/1999 school year.
4. Also, on 20 July 1999, the Scottish Executive published an Action Plan for the implementation in Scotland of the recommendations made in the Macpherson Report into the murder of Stephen Lawrence. In the Action Plan, the Executive made a commitment to publish information at a national level on the ethnic identity of excluded pupils in Scotland. Information on the ethnicity of all pupils in Scotland was collected for the first time in September 2002, and is due to be published by June 2003. Exclusion rates by ethnicity will be made available soon after.
5. Following the issue of Circular 2/98, the Scottish Executive collected and collated this additional information from local authorities for the first time in September 1999.
6. This is the fourth year that this 'Exclusions from Schools' survey has been run. Returns were received from all local authorities. However, in some cases some authorities were unable to provide information on the duration of exclusions, circumstances which lead to the exclusions or information on the number of times that pupils were excluded. In some cases, the ethnicity of the pupil was also unknown. Therefore, the results for these four categories have been expressed as a percentage of known information.
7. All tables are available on the Scottish Executive website at <http://www.scotland.gov.uk/stats/bulletins/00240-00.asp>.

Enquiries

8. Public enquiries (non-media) about the information contained in this notice should be addressed to Mal Cooke, Statistician, Scottish Executive Education Department, Room 1A, Victoria Quay, Edinburgh EH6 6QQ. Telephone 0131 244 1689 or e-mail ea.stats@scotland.gsi.gov.uk

9. Media enquiries about the information in this notice should be addressed to:

Press Education: 0131 244 2087

Statistics Publication Notice

21 July 2003

Table 1: Total number of exclusions from local authority primary, secondary and special schools, by type of exclusion.

	1998/1999	1999/2000	2000/2001	2001/2002
Total All Exclusions	34,831	38,769	38,656	37,442
Temporary	34,630	38,409	38,334	37,110
Total Removed from Register	201	360	322	332
Removed from register (with a break in school attendance)		190	136	175
Removed from register (without a break in school attendance)		170	186	157

Chart 1: Total number of exclusions from local authority primary, secondary and special schools, by gender and year.

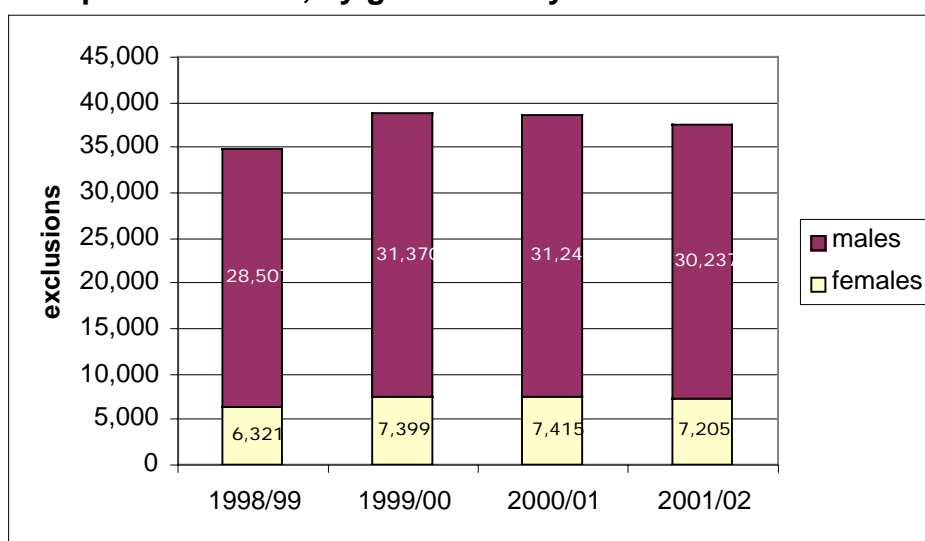


Chart 2: Total number of exclusions from local authority primary and secondary schools per 1,000 pupils, by stage, 2001/02.

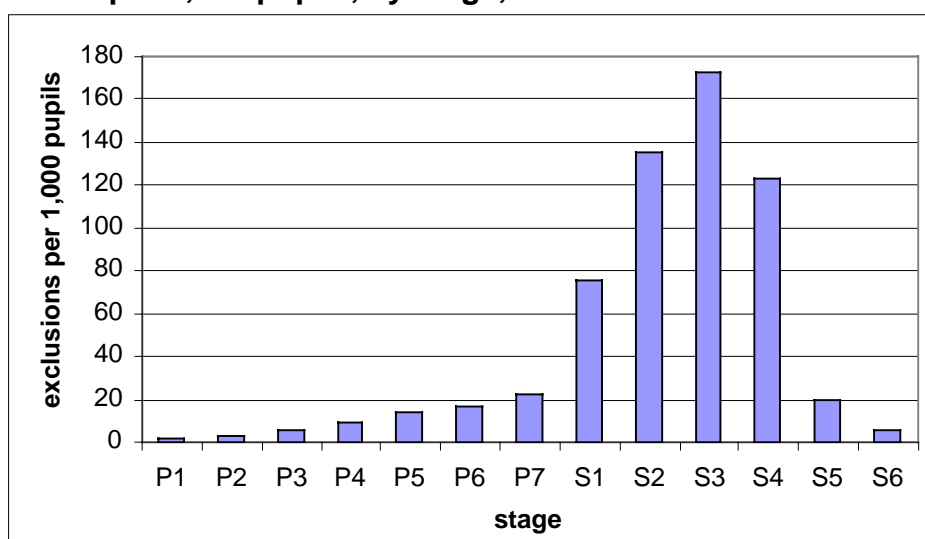


Table 2a: Exclusions from local authority primary schools, by stage and gender, 2001/2002

	Total	Stage						
		P1	P2	P3	P4	P5	P6	P7
Total	4,478	112	184	327	575	835	1,053	1,392
Percentage	100	3	4	7	13	19	24	31
Male	4,137	100	168	304	541	783	960	1,281
Female	341	12	16	23	34	52	93	111

Table 2b: Exclusions from local authority secondary schools, by stage and gender, 2001/2002

	Total	Stage					
		S1	S2	S3	S4	S5	S6
Total	31,767	4,481	8,224	10,651	7,335	922	154
Percentage	100	14	26	34	23	3	0
Male	24,996	3,759	6,458	8,147	5,752	762	118
Female	6,771	722	1,766	2,504	1,583	160	36

Table 2c: Exclusions from local authority special schools, by gender, 2001/2002

	Total
Total	1,197
Male	1,104
Female	93

Table 3: Temporary exclusions, by duration, 2001/2002

Duration (half-days)	Number	Percentage for known durations
Total	37,110	100
1	330	1
2	4,259	11
3	1,142	3
4	6,754	18
5	1,304	4
6	10,349	28
7	679	2
8	2,305	6
9	584	2
10	4,548	12
11-20	3,319	9
21-30	735	2
>30	761	2
Duration not known	41	-

Table 4: Exclusions by number of times that pupils were temporarily excluded, 2001/2002

Number of temporary exclusions per pupil	Number of pupils	Percentage for known number of temporary exclusions per pupil
Total	20,596	100
1	12,745	62
2	3,895	19
3	1,842	9
4	958	5
5	518	3
6	313	2
7	140	1
8	79	0
9	52	0
10	22	0
More than 10	30	0
Not known	2	-

Table 5a: Total number of exclusions, by ethnic background, 2001/2002

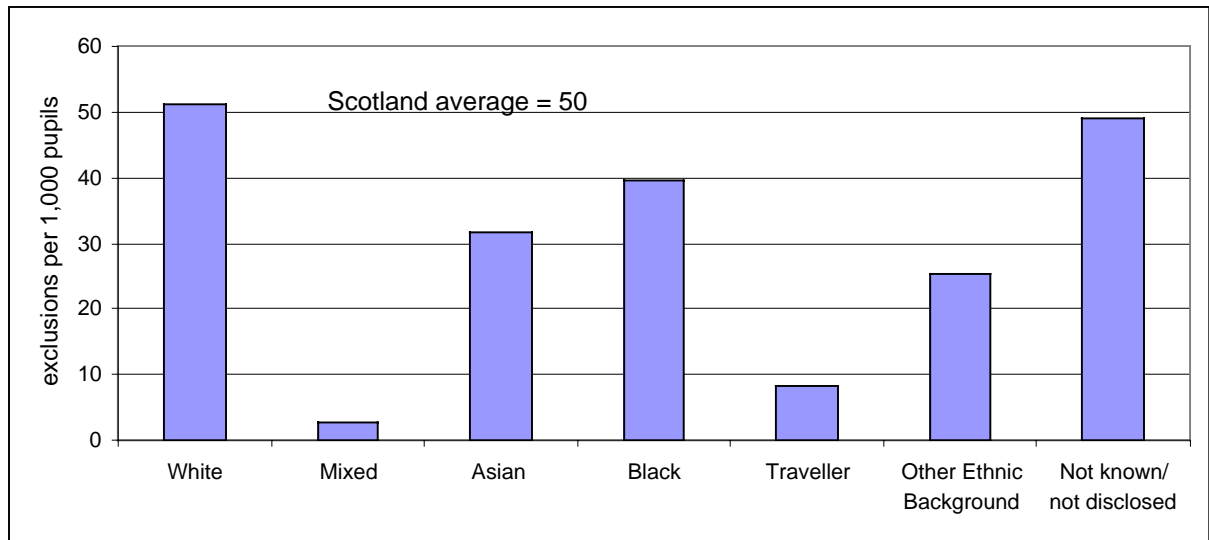
Ethnic background	Total all exclusions	Percentage for known ethnic backgrounds	Number of temporary exclusions	Number of removals from register, with or without a break in school attendance
Total	37,442	100	37,110	332
White - UK	34,103	97	33,814	289
White - other	487	1	486	1
Mixed	10	0	10	-
Asian - Indian	42	0	42	-
Asian - Pakistani	335	1	331	4
Asian - Bangladeshi	13	0	13	-
Asian - Chinese	13	0	12	1
Asian - other	38	0	38	-
Black - Caribbean	8	0	8	-
Black - African	21	0	20	1
Black - other	31	0	30	1
Occupational traveller	2	0	2	-
Gypsy traveller	1	0	1	-
Other traveller	0	0	-	-
Other	64	0	61	3
Not known or not divulged	2,274	-	2,242	32

Table 5b: Estimates of exclusions per 1,000 pupils, by ethnicity, 2001/02*

	pupils	number			rate per 1,000 pupils		
		temporary exclusions	removals from the register	total exclusions	temporary exclusions	removals from the register	total exclusions
All Pupils	743,958	37,110	332	37,442	50	0.4	50
White	675,497	34,300	290	34,590	51	0.4	51
Mixed	3,772	10	-	10	3	-	3
Asian	13,956	436	5	441	31	0.4	32
Black	1,516	58	2	60	38	1.3	40
Traveller	370	3	-	3	8	-	8
Other Ethnic Background	2,528	61	3	64	24	1.2	25
Not known/ not disclosed	46,319	2,242	32	2,274	48	0.7	49

* Exclusions figures are for 2001/02, whereas pupil numbers are from September 2002 scaled to 2001/02 totals, and hence a different academic year.

Chart 3: Estimates of exclusions per 1,000 pupils, by ethnicity, 2001/02*



* Exclusions figures are for 2001/02, whereas pupil numbers are from September 2002 scaled to 2001/02 totals, and hence a different academic year.

Table 6: Total number of exclusions, by circumstances, 2001/2002

Circumstances	Number*	Percentage for known circumstances	Number of temporary exclusions	Number of removals from register, with or without a break in attendance
Total	44,192		43,727	465
Fighting	3,076	7	3,058	18
Physical abuse of fellow pupils	5,514	13	5,456	58
Physical abuse of members of staff	1,452	3	1,410	42
Verbal abuse of fellow pupils	906	2	889	17
Verbal abuse of members of staff	7,135	17	7,078	57
Aggressive or threatening behaviour	4,294	10	4,208	86
General or persistent disobedience	10,092	24	10,014	78
Insolent or offensive behaviour	3,602	9	3,573	29
Drug related incident	568	1	559	9
Racist incident	118	0	117	1
Lack of parental co-operation	81	0	80	1
Other	5,047	12	4,990	57
Not known	2,307	-	2,295	12

An exclusion with more than one circumstance given is counted under each relevant category

Table 7: Other information on exclusions, 2001/2002

	Number of exclusions	Percentage of all exclusions	This group as percentage of all pupils	Number of temporary exclusions	Number of removals from register, with or without break in school attendance
Pupils entitled to Free School Meals	16,833	45	19	16,699	134
Pupils with a Record of Needs	1,559	4	2	1,549	10
Pupils looked after by the local authority*	1,235	3	1	1,220	15
Appealed against	144	0	N/A	131	13

* Under the Children (Scotland) Act 1995. Children aged 5-16 used as a proxy for all pupils in school.

Table 8: Exclusions from local authority primary, secondary and special schools, by type of exclusion and local authority, 2001/2002

Local authority	Total exclusions	Exclusions per 1,000 pupils	Number of temporary exclusions	Removed from register (with a break in attendance)	Removed from register (without a break in attendance)
Scotland	37,442	50	37,110	175	157
Aberdeen City	988	38	953	35	0
Aberdeenshire	699	19	684	8	7
Angus	649	40	649	0	0
Argyll & Bute	616	47	616	0	0
Clackmannanshire	308	41	308	0	0
Dumfries & Galloway	571	26	571	0	0
Dundee City	1,933	95	1,933	0	0
East Ayrshire	995	53	995	0	0
East Dunbartonshire	803	42	803	0	0
East Lothian	447	33	447	0	0
East Renfrewshire	207	13	192	5	10
Edinburgh, City of	1,805	36	1,688	117	0
Eilean Siar	22	5	22	0	0
Falkirk	1,098	52	1,098	0	0
Fife	3,028	58	3,028	0	0
Glasgow City	6,953	92	6,850	0	103
Highland	759	23	759	0	0
Inverclyde	930	72	930	0	0
Midlothian	534	41	525	2	7
Moray	202	15	197	5	0
North Ayrshire	1,052	49	1,052	0	0
North Lanarkshire	3,535	68	3,528	0	7
Orkney Islands	15	5	15	0	0
Perth & Kinross	608	33	608	0	0
Renfrewshire	2,428	90	2,426	0	2
Scottish Borders	270	17	268	0	2
Shetland Islands	7	2	7	0	0
South Ayrshire	811	49	811	0	0
South Lanarkshire	2,288	49	2,288	0	0
Stirling	176	14	175	1	0
West Dunbartonshire	1,545	103	1,526	0	19
West Lothian	1,160	45	1,158	2	0

Table 9: Temporary exclusions from local authority primary, secondary and special schools, by different pupils temporarily excluded, and local authority, 2001/2002

Local authority	Temporary exclusions		Different pupils temporarily excluded	
	Number	Per 1,000 pupils	Number	Per 1,000 pupils
Scotland	37,110	50	20,596	28
Aberdeen City	953	37	621	24
Aberdeenshire	684	19	472	13
Angus	649	40	333	20
Argyll & Bute	616	47	348	27
Clackmannanshire	308	41	198	27
Dumfries & Galloway	571	26	378	17
Dundee City	1,933	95	1,016	50
East Ayrshire	995	53	532	28
East Dunbartonshire	803	42	400	21
East Lothian	447	33	265	20
East Renfrewshire	192	12	142	9
Edinburgh, City of	1,688	34	1,133	23
Eilean Siar	22	5	17	4
Falkirk	1,098	52	603	28
Fife	3,028	58	1,650	31
Glasgow City	6,850	91	3,672	48
Highland	759	23	485	15
Inverclyde	930	72	456	35
Midlothian	525	40	361	28
Moray	197	15	138	10
North Ayrshire	1,052	49	592	28
North Lanarkshire	3,528	68	1,923	37
Orkney Islands	15	5	15	5
Perth & Kinross	608	33	356	19
Renfrewshire	2,426	89	1,137	42
Scottish Borders	268	17	168	11
Shetland Islands	7	2	6	2
South Ayrshire	811	49	457	27
South Lanarkshire	2,288	49	1,289	28
Stirling	175	14	137	11
West Dunbartonshire	1,526	101	598	40
West Lothian	1,158	45	698	27