

T: 0131-244 2147  
E: elizabeth.fraser@scotland.gsi.gov.uk

27 November 2009

Dear colleague

## **PRISON STATISTICS SCOTLAND 2008-09 AND BEYOND**

Please find enclosed the latest statistical bulletin on the prison population in Scotland. There have been some changes in the format of this bulletin in that most of the tables presented in previous bulletins have been restructured in order to improve their usability. Some of the more detailed tables no longer appear in the printed bulletin, and are instead included in the web tables published alongside the bulletin on the Scottish Government website ([www.scotland.gov.uk](http://www.scotland.gov.uk)).

We are planning to further develop our web tables over the course of the next year, and publishing a more streamlined and informative Key Trends document alongside the annual tables. We will also be exploring the possibility for releasing data on a quarterly basis in order to improve the timeliness of reporting. Given the focus on developing our web dissemination, we will be discontinuing print publication of the bulletin in its current format and seeking users' views to inform our future dissemination strategy.

If you have any questions or comments about our dissemination, or would like to be more actively involved in helping us improve this, please feel free to get in touch with me.

Yours sincerely

**ELIZABETH FRASER**  
Prison Statistics  
Justice Analytical Services  
Scottish Government

# Statistical Bulletin

## Crime and Justice Series

A National Statistics Publication for Scotland



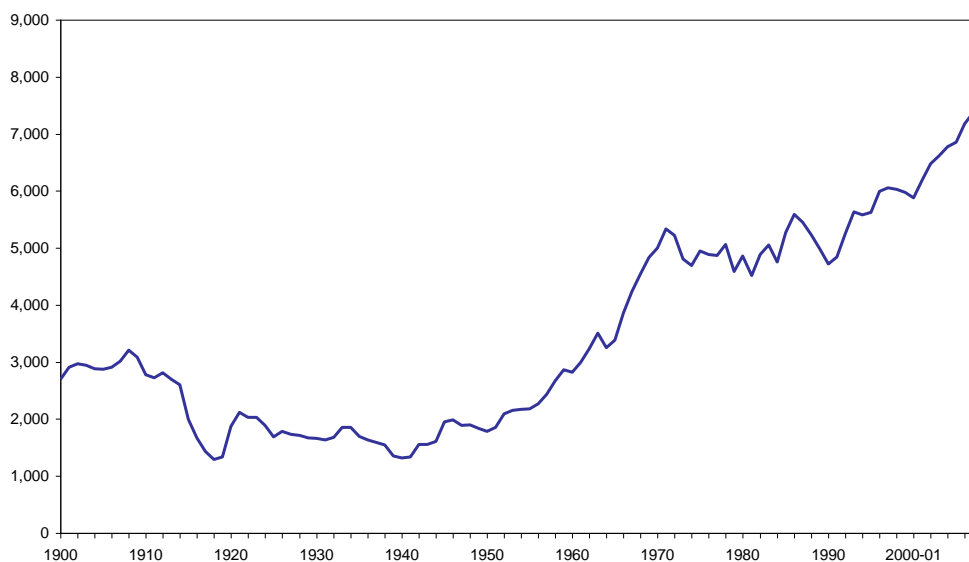
### Prison statistics Scotland: 2008-09

27 November 2009

#### 1. Introduction

1. This bulletin is part of a series on the criminal justice system, and shows data up to 2008-09 on Scottish prison population level and characteristics, as well as information on receptions to Scottish prisons, breaches of discipline and international comparisons.

**Chart 1 Average daily prison population (Scotland): 1900 to 2008-09**



2. Figures for 2008-09 reflect the sustained increase in the prison population since 2000-01, reaching an average daily population of 7,835. This represents an increase of 6 per cent over the previous year.

3. The increase is primarily driven by the direct sentenced population. However, the numbers of remand prisoners and those recalled from licence/supervision have increased more rapidly over the past 10 years relative to sentenced prisoners, and now make up 29 per cent of the total population compared to 18 per cent in 1999-00.

**Contents**

- 1. Introduction..... 1**
- 2. Key points ..... 4**
- 3. Main findings ..... 5**
  - Prison population..... 5
  - Population profile..... 6
  - Home Detention Curfew ..... 7
  - Receptions ..... 8
  - Breaches of discipline and punishments ..... 9
  - International comparisons of prison population ..... 9
- 4. Tables ..... 11**
  - Notes on tables ..... 11
  - Average daily population in penal establishments by type of custody: 1999-00 to 2008-09 .. 11
  - Average daily population and maximum number by penal establishment: 2008-09 ..... 12
  - Average daily population of sentenced offenders by length of sentence:  
1999-00 to 2008-09 ..... 13
  - Offenders in custody by age, ethnic origin, religion and supervision level: 30 June 2008 ..... 14
  - Main crime/offence of offenders in custody by sex and custody type: 30 June 2008 ..... 15
  - Community Justice Authority and local authority home area of offenders in custody by age  
and sex: 30 June 2008 ..... 16
  - Liberations from prison by custody type/sentence length and local authority area of home  
address: 2008-09 ..... 17
  - Prisoners released on Home Detention Curfew: August 2006 to March 2009 ..... 18
  - Receptions to penal establishments by type of custody: 1999-00 to 2008-09 ..... 19
  - Sentenced receptions to penal establishments by sentencing court:1999-00 to 2008-09 ..... 20
  - Unruly certificate receptions by sex, age, crime/offence and time spent in custody:  
1999-00 to 2008-09 ..... 20
  - Direct sentenced receptions to penal establishments by age and sex: 1999-00 to 2008-09 .21
  - Direct sentenced receptions to penal establishments by main crime/offence:  
1999-00 to 2008-09 ..... 22
  - Direct sentenced receptions to penal establishments by length of sentence, age and sex  
1999-00 to 2008-09 ..... 23
  - Length of sentence imposed for direct sentenced receptions by main crime/offence, age and  
sex: 2008-09..... 24
  - Fine default receptions to penal establishments by age, sex, length of sentence and amount  
of fine outstanding: 1999-00 to 2008-09..... 25
  - Breaches of discipline and outcome in penal establishments by sex, age and type:  
2008-09 ..... 26
  - Prison population and rate per 100,000 population by jurisdiction: 2008 ..... 27
- 5. Notes and definitions ..... 28**
  - Coverage and data collection ..... 28
  - Counting conventions ..... 28
  - Fine default..... 29
  - Unruly certificates ..... 29
  - Home Detention Curfew ..... 29
  - Supervision level ..... 29
  - Community Justice Authorities ..... 29
  - Classification of crimes/offences ..... 30

**List of charts**

Chart 1 Average daily prison population (Scotland): 1900 to 2008-09..... 1  
Chart 2 Average daily prison population by category of prisoner: 1999-2000 to 2008-09 .....5  
Chart 3 Age distribution of prisoners by sex: 30 June 2008 .....6  
Chart 4 Imprisonment rate per 100,000 population (Scotland): June 2008.....7  
Chart 5 Average daily population on Home Detention Curfew: August 2006 to March 2009..8  
Chart 6 Prison receptions by custody type: 1999-2000 to 2008-09 ..... 8  
Chart 7 Average sentence imposed (days): 1999-00 to 2008-09..... 9  
Chart 8 Imprisonment rate per 100,000 population: 2008 ..... 10

## 2. Key points

- The average daily population during 2008-09 reached 7,835. This represents an increase of 6 per cent from the previous year, and 31 per cent over the past 10 years since 1999-00 ([Table 1](#)).
- The number of prisoners on remand or recalled from licence/supervision increased disproportionately compared to sentenced prisoners. The average daily population of remand prisoners has grown by 72 per cent since 1999-00 (from 976 to 1,678), while the number of recalls has risen nearly five-fold from 100 to 599 over the same period ([Table 1](#)).
- These groups now make up a larger proportion of the total population than they did 10 years ago. In 2008-09, the remand population represented 21 per cent of the total and the recall population 8 per cent, a marked increase from 16 and 2 per cent since 1999-00 ([Table 1](#)).
- During 2008-09, the average daily population was 7,422 for men and 413 for women. However, there has also been a disproportionate increase in the population of women prisoners: while the male population has increased by 29 per cent since 1999-00, the female population has nearly doubled ([Table 1](#)).
- The average daily population on Home Detention Curfew (HDC) during 2008-09 was 371, an increase of 20 per cent over the previous year. The number of releases on HDC during 2008-09 was 2,056, a slight drop of 1 per cent compared to 2,082 the previous year ([Table 8](#)).

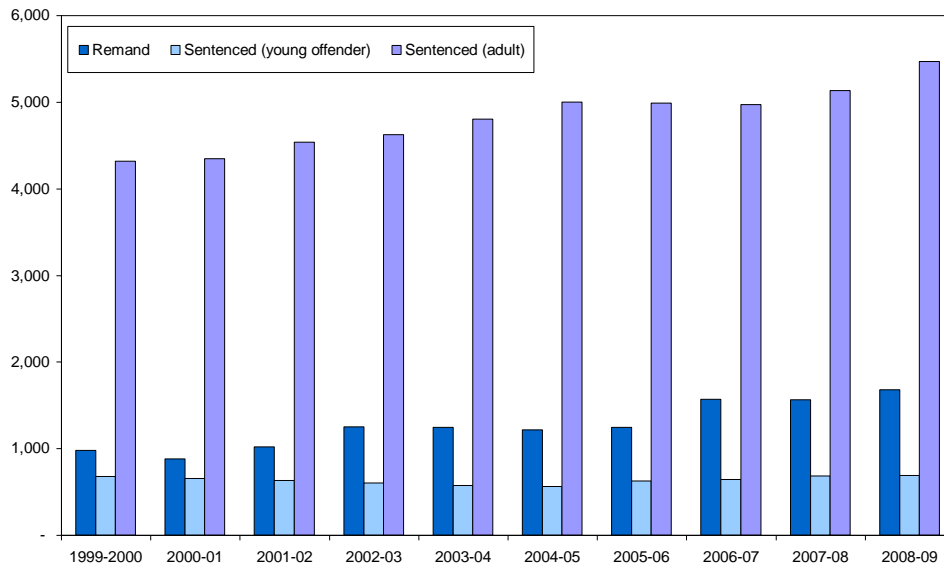
### 3. Main findings

#### Prison population

4. The prison population has been increasing steadily since 2000-01, reaching an average daily population of 7,835 during 2008-09 (Table 1). This represents an increase of 6 per cent from the previous year, and 31 per cent over the past 10 years since 1999-00.

5. This trend is driven mainly by a sustained increase in the average daily population of adult sentenced prisoners although the population of remand prisoners has also shown a marked rise since 2005-06 to the current level of 1,678 (Chart 2).

**Chart 2 Average daily prison population by category of prisoner: 1999-2000 to 2008-09**



6. The increase in the sentenced population is particularly notable for the medium term sentences of six months to two years. This population increased by 28 per cent from the previous year, from an average daily population of 1,226 to 1,574 (Table 3).

7. Prisoners on remand or recalled from licence or supervision constitute a relatively small proportion of the prison population. However, these categories have increased disproportionately compared to sentenced prisoners and now make up a larger proportion of the total population than they did 10 years ago. For 2008-09, the remand population represented 21 per cent of the total and the recall population 8 per cent, a marked increase from 16 and 2 per cent since 1999-00. The percentage increase over that period is 72 per cent for remand, while the number of recalls has risen nearly five-fold, from 100 to 599 (Table 1).

8. Untried prisoners form the bulk of the remand population (1,414 compared to 264 for remand prisoners who have been convicted but not sentenced), although the number of convicted remand prisoners shows a somewhat higher rate of increase over the past 10 years (156 per cent compared to 62 per cent).

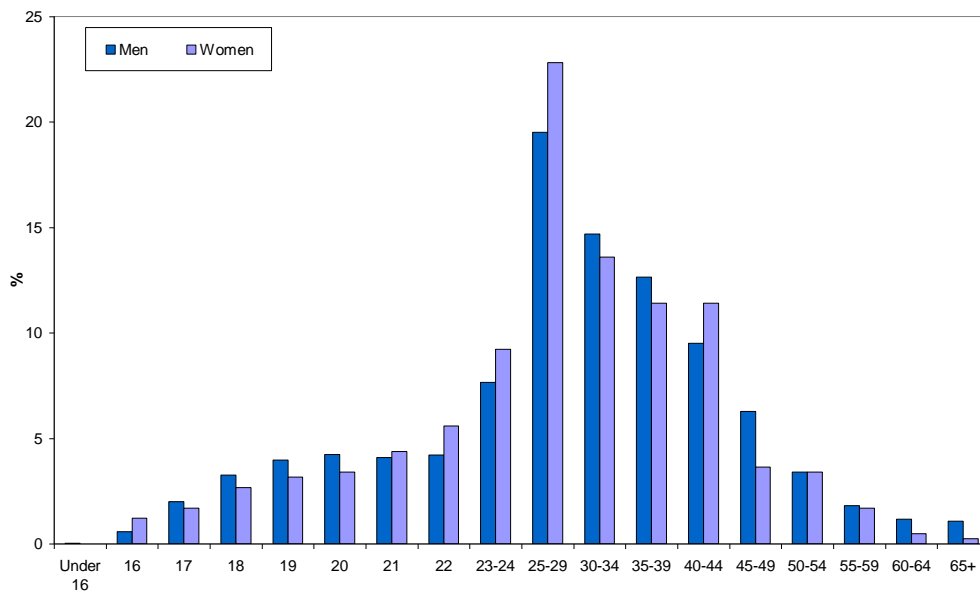
9. There has also been a disproportionate increase in the population of women prisoners, although these make up a fairly small proportion of the prison population. During 2008-09, the average daily population was 7,422 for men and 413 for women. While the male population has increased by 29 per cent since 1999-00, the female population has nearly doubled (Table 1).

10. The average daily population can fluctuate quite substantially compared to the average over the year. There were particularly high population levels during 2008, with a peak of 8,181 in mid-September (Table 2).

### Population profile

11. The prison population on 30 June 2008 was 7,761, of which 95 per cent were men (Table 4). The age profiles of men and women prisoners differ somewhat in that women are more likely to be in the 21-29 and 40-44 age bands (53 per cent of women compared to 45 per cent of men), and this is consistent with previous years (Chart 3).

**Chart 3 Age distribution of prisoners by sex: 30 June 2008**



12. Just over half of the prison population (51 per cent) had a medium supervision level, and 9 per cent had a high supervision level. The remaining 40 per cent had a low level of supervision (Table 4).

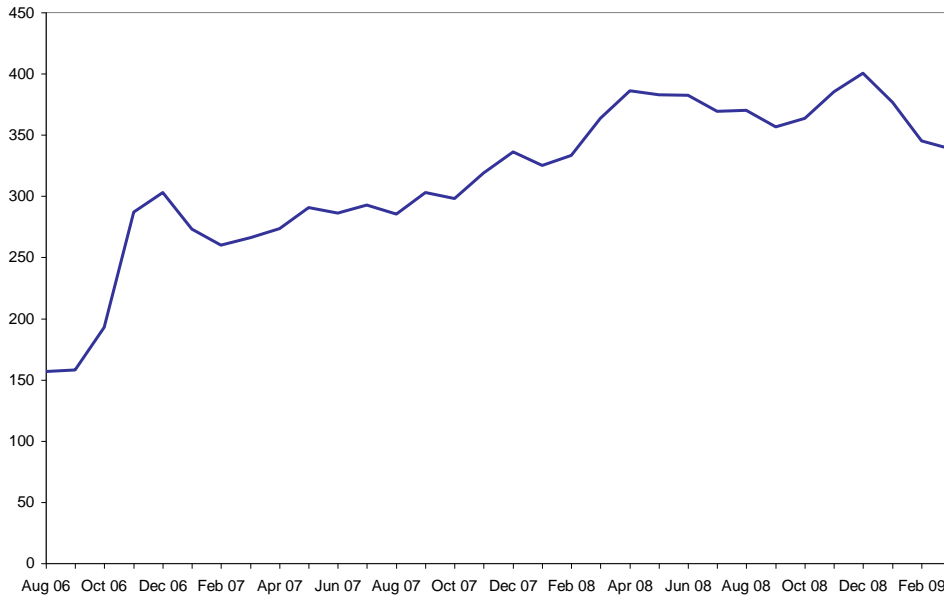
13. The crime category with the largest population of sentenced prisoners on 30 June 2008 was non-sexual violent crime (37 per cent), followed by the other crimes category (20 per cent). This category consisted mainly of drugs-related crimes, which make up 14 per cent of the total.

14. Offenders from Glasgow City represent a disproportionately large group in the prison population: while Glasgow has 11 per cent of the total 16+ Scottish population, 21 per cent of prisoners are from Glasgow (Table 6).

15. This is reflected in the imprisonment rate per 100,000 population, which is highest for Glasgow at 337, followed closely by Dundee at 328. West Dunbartonshire, Inverclyde, North Ayrshire and Renfrewshire also have relatively high imprisonment rates (Chart 8). Orkney has the lowest rate (30), followed by Aberdeenshire (53), Eilean Siar (69), East Lothian and East Dunbartonshire (70 for both) (Table 6).



**Chart 5 Average daily population on Home Detention Curfew: August 2006 to March 2009**



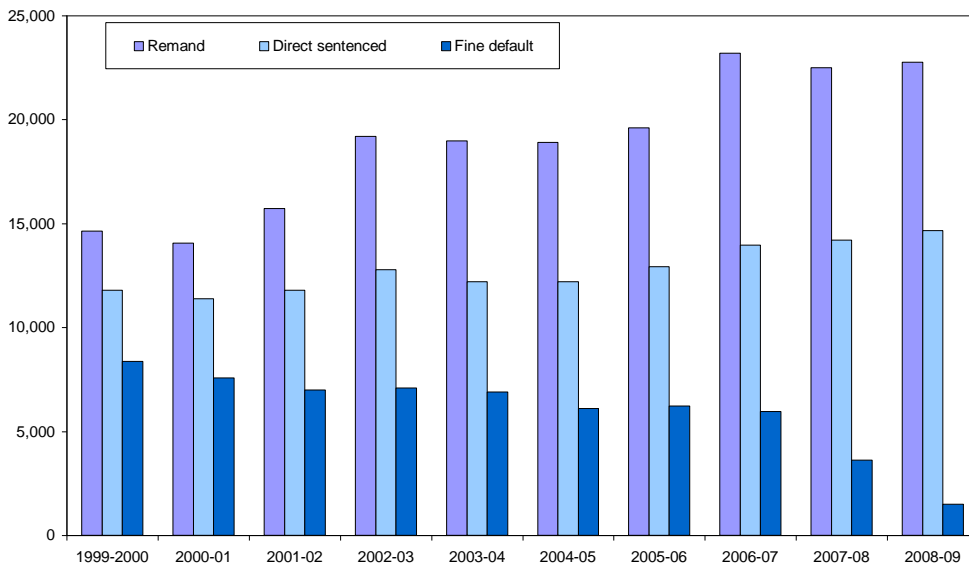
**Receptions**

18. Receptions tend to show some year on year variation (Chart 6), with the number of remand receptions increasing by 1 per cent to 22,754 for 2008-09, after a drop of 3 per cent between 2006-07 and 2007-08 (Table 9).

19. Over the last year, direct sentenced receptions have increased by 3 per cent to 14,650 (Table 14), and the number of fine defaulters has dropped by about 60 per cent to 1,506 (Table 16).

20. Over the 10 year period between 1999-00 and 2008-09, remand receptions have increased by 56 per cent and direct sentenced receptions by 24 per cent, while receptions for fine default have dropped by about four-fifths.

**Chart 6 Prison receptions by custody type: 1999-2000 to 2008-09**



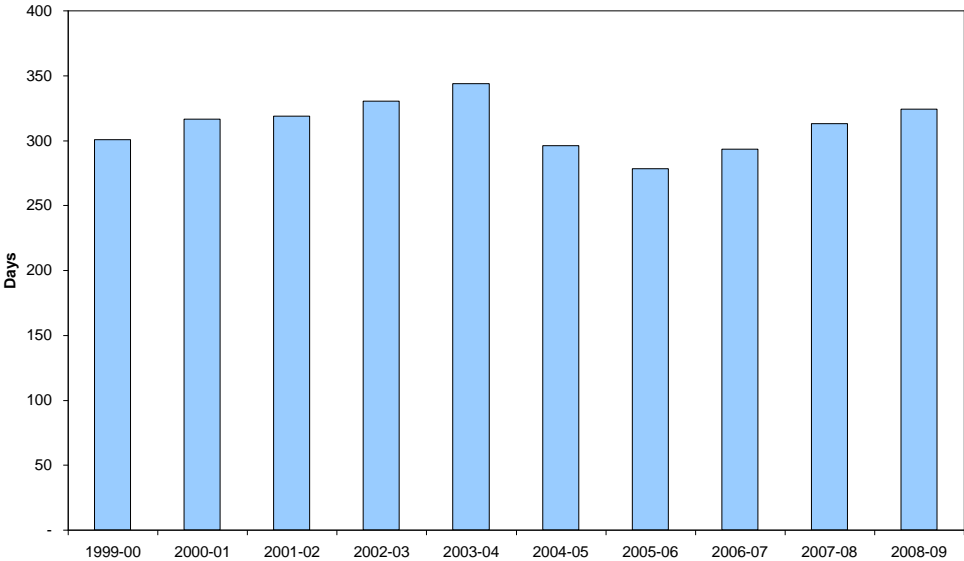
*Direct sentenced receptions*

21. In terms of types of crimes and offences, the most notable areas of recent increase are serious assault/attempted murder and common assault. These have increased by 11 per cent to 1,154 and 10 per cent to 2,041 respectively since 2007-08 (Table 13).

22. The bulk of the rise in direct sentenced receptions over the past 10 years is due to increasing volumes of relatively low-tariff crimes and offences. These include crimes against public justice (148 per cent), handling offensive weapons (138 per cent), common assault (87 per cent) and breach of the peace (88 per cent). The rate of increase has been particularly marked since 2003-04.

23. The average sentence length has fluctuated somewhat over the past 10 years, with the most recent figures showing an increase between 2005-06 and 2008-09 to 324 days (Table 14). This represents an increase of 4 per cent over the previous year, but is somewhat lower than the peak at 344 days during 2003-04 (Chart 7).

**Chart 7 Average sentence imposed (days): 1999-00 to 2008-09**



24. The shift in balance between less serious and more serious crimes highlighted in §22 appears to have had a short term impact on the average sentence length between 2003-04 and 2005-06. However, there have also been increases in crimes of violence over the past 10 years (43 per cent). These tend to result in heavier sentences and will therefore have a greater impact on the prison population in the longer term (Table 13).

25. The sentence category with the largest increase is for sentences between six months and two years, where there was a 30 per cent increase to 5,558 in 2008-09 compared to the previous year (Table 14). This category also accounts for the largest number of receptions (38 per cent of all direct sentenced receptions).

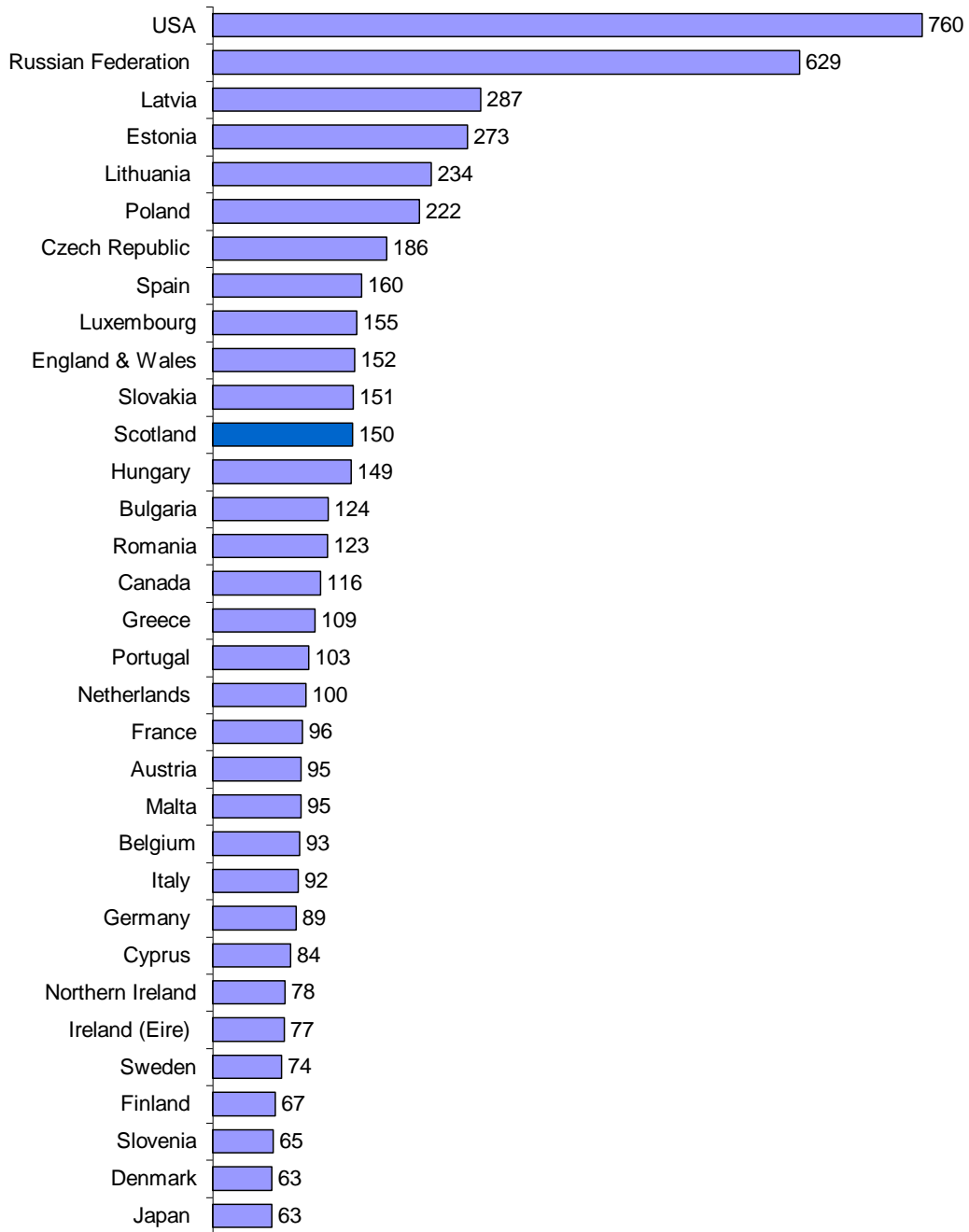
**Breaches of discipline and punishments**

26. There were 23,357 breaches of discipline recorded in Scottish penal establishments in 2008-09, an increase of nearly 20 per cent compared with 2007-08 (Table 17).

**International comparisons of prison population**

27. In terms of prison population per 100,000 population, Scotland ranked twelfth highest with 150, similar to Slovakia (151), England and Wales (152) and Luxembourg (155) (Chart 8). This is higher than most other EU countries, but substantially lower than the US, the Russian Federation and the Baltic states (Table 18). Comparisons of the prison population in different jurisdictions should be treated with caution due to the different justice systems and recording rules in operation.

**Chart 8 Imprisonment rate per 100,000 population: 2008**



## 4. Tables

### Notes on tables

28. Where a table refers to average daily populations, components may not add to totals due to rounding.

29. Receptions do not equate to persons received since someone receiving a custodial sentence after a period on remand, or several custodial sentences at different times or from different courts, will be counted more than once. [Counting conventions](#) are described in more detail in Section 5.

30. The following symbols are used throughout.

- nil
- \* less than 0.5
- n/a not available

### Average daily population in penal establishments by type of custody: 1999-00 to 2008-09

Table 1

	1999-00	2000-01	2001-02	2002-03	2003-04	2004-05	2005-06	2006-07	2007-08	2008-09	% change 07-08 to 08-09
<b>Total</b>	<b>5,975</b>	<b>5,883</b>	<b>6,186</b>	<b>6,475</b>	<b>6,621</b>	<b>6,779</b>	<b>6,857</b>	<b>7,183</b>	<b>7,376</b>	<b>7,835</b>	<b>6</b>
<i>Remand</i>	976	881	1,019	1,247	1,246	1,216	1,242	1,567	1,560	1,678	8
Untried	873	771	898	1,102	1,085	1,031	1,025	1,325	1,305	1,414	8
Convicted awaiting sentence	103	109	120	145	161	185	217	242	255	264	4
Young offenders	270	220	256	272	251	260	284	361	355	334	-6
Adults	706	661	763	975	995	956	958	1,206	1,205	1,344	12
<i>Sentenced</i>	4,997	5,001	5,165	5,226	5,375	5,561	5,614	5,615	5,815	6,156	6
Young offenders (direct sentence)	666	642	609	590	556	544	608	621	658	659	*
Adults (direct sentence)	4,146	4,115	4,259	4,318	4,439	4,595	4,552	4,428	4,514	4,887	8
Fine defaulters	56	64	58	62	64	61	53	46	29	11	-63
Recalls from supervision/licence	100	145	202	250	310	356	400	519	614	599	-2
Others	28	36	37	6	6	5	1	-	*	-	-
<i>Sentenced by court martial</i>	2	*	*	*	-	1	-	-	*	1	n/a
<i>Civil prisoners</i>	1	1	1	2	*	1	1	1	1	*	n/a
<b>Men</b>	<b>5,765</b>	<b>5,676</b>	<b>5,929</b>	<b>6,193</b>	<b>6,307</b>	<b>6,447</b>	<b>6,523</b>	<b>6,830</b>	<b>7,005</b>	<b>7,422</b>	<b>6</b>
<i>Remand</i>	922	835	956	1,165	1,158	1,132	1,159	1,466	1,443	1,545	7
Untried	833	740	854	1,046	1,026	975	969	1,253	1,231	1,330	8
Convicted awaiting sentence	89	95	101	119	132	156	190	213	212	215	1
<i>Sentenced</i>	4,840	4,840	4,972	5,026	5,148	5,314	5,364	5,363	5,561	5,876	6
Young offenders (direct sentence)	639	614	586	570	532	515	584	591	634	634	*
Adults (direct sentence)	4,023	3,991	4,098	4,145	4,243	4,383	4,331	4,214	4,292	4,640	8
Fine defaulters	53	59	54	56	58	56	49	43	27	10	-62
Recalls from supervision/licence	99	144	201	249	308	355	398	515	607	592	-3
Others	26	33	33	5	6	5	1	-	-	-	-
<i>Sentenced by court martial</i>	2	*	*	*	-	1	-	-	*	1	n/a
<i>Civil prisoners</i>	*	*	1	2	*	1	*	*	1	*	n/a
<b>Women</b>	<b>210</b>	<b>207</b>	<b>257</b>	<b>282</b>	<b>314</b>	<b>332</b>	<b>334</b>	<b>353</b>	<b>371</b>	<b>413</b>	<b>11</b>
<i>Remand</i>	54	45	63	82	87	84	83	101	117	133	14
Untried	40	31	44	57	59	56	56	72	74	85	14
Convicted awaiting sentence	14	14	19	26	29	29	27	29	42	49	15
<i>Sentenced</i>	156	161	194	200	227	248	251	251	254	280	10
Young offenders (direct sentence)	27	28	24	20	23	30	24	30	24	25	5
Adults (direct sentence)	123	124	161	173	197	212	220	214	222	247	11
Fine defaulters	3	5	4	5	5	4	4	3	2	1	-68
Recalls from supervision/licence	1	1	1	1	1	2	2	4	7	7	3
Others	2	3	4	1	*	*	*	-	-	-	n/a
<i>Sentenced by court martial</i>	-	-	-	-	-	-	-	-	-	-	n/a
<i>Civil prisoners</i>	*	*	*	-	*	*	*	*	*	*	n/a

**Average daily population and maximum number by penal establishment: 2008-09**

**Table 2**

	Average daily population			Maximum number <sup>1</sup>		
	Men	Women	Total	Men	Women	Total
<i>Prisons</i>						
Aberdeen	233	-	<b>233</b>	265	-	<b>265</b>
Addiewell <sup>2</sup>	113	-	<b>113</b>	711	-	<b>711</b>
Barlinnie	1,555	-	<b>1,555</b>	1,777	-	<b>1,777</b>
Cornton Vale	-	366	<b>366</b>	-	415	<b>415</b>
Dumfries	205	-	<b>205</b>	226	-	<b>226</b>
Edinburgh	847	-	<b>847</b>	926	-	<b>926</b>
Glenochil	730	-	<b>730</b>	761	-	<b>761</b>
Greenock	312	*	<b>312</b>	348	19	<b>348</b>
Inverness	148	3	<b>151</b>	173	14	<b>180</b>
Kilmarnock	635	-	<b>635</b>	660	-	<b>660</b>
Open Estate <sup>3</sup>	350	-	<b>350</b>	411	-	<b>411</b>
Perth	645	-	<b>645</b>	690	-	<b>690</b>
Peterhead	305	-	<b>305</b>	306	-	<b>306</b>
Shotts	540	-	<b>540</b>	550	-	<b>550</b>
<i>Young Offenders Institutions</i>						
Cornton Vale	-	44	<b>44</b>	-	54	<b>54</b>
Perth	116	-	<b>116</b>	144	-	<b>144</b>
Polmont	689	-	<b>689</b>	733	-	<b>733</b>
<i>Legalised police cells</i> <sup>4</sup>	*	-	*			
<b>Total</b>	<b>7,422</b>	<b>413</b>	<b>7,835</b>	<b>7,741</b>	<b>461</b>	<b>8,181</b>

Notes:

1. The figures in these columns cannot be added to produce a total maximum since the individual establishment figures relate to different days within the year. The maximum number of prisoners held within the Scottish Prison Service estate on any one day in 2008-09, was 8,181, and occurred on 15 September 2008. The maximum number of male prisoners was 7,741 on 15 September 2008, and the maximum number of female prisoners was 461 on 16 March 2009.
2. Addiewell opened on 12 December 2008 and therefore its average daily population for 2008-09 is much lower than its maximum population for 2008-09.
3. Castle Huntly and Noranside have been merged for administrative purposes and are now known as the Open Estate.
4. See Section 5 for details on the [current prison estate](#).

**Average daily population of sentenced offenders by length of sentence:  
1999-00 to 2008-09**

**Table 3**

	1999-00	2000-01	2001-02	2002-03	2003-04	2004-05	2005-06	2006-07	2007-08	2008-09	% change 07-08 to 08-09
<b>Total</b>	<b>4,996</b>	<b>5,001</b>	<b>5,165</b>	<b>5,226</b>	<b>5,375</b>	<b>5,561</b>	<b>5,614</b>	<b>5,615</b>	<b>5,815</b>	<b>6,156</b>	<b>6</b>
Fine default	56	64	58	62	64	61	53	46	29	11	-63
Less than 3 months	75	79	75	69	68	81	102	125	116	98	-15
3 months - less than 6 months	444	419	434	426	404	451	443	445	426	404	-5
6 months - less than 2 years	1,105	1,074	1,182	1,171	1,161	1,160	1,215	1,159	1,226	1,574	28
2 years - less than 4 years	778	790	780	817	856	881	912	956	1,058	1,101	4
4 years or over (excluding life)	1,848	1,808	1,799	1,830	1,919	1,952	1,835	1,696	1,650	1,642	0
Life/Section 205/206 sentences	561	587	597	595	587	615	653	669	696	727	4
Persons recalled from supervision/licence	100	145	202	250	310	356	400	519	614	599	-2
Others	28	36	37	6	6	5	1	-	*	-	n/a
<b>Young offenders</b>	<b>679</b>	<b>655</b>	<b>628</b>	<b>601</b>	<b>573</b>	<b>560</b>	<b>625</b>	<b>645</b>	<b>685</b>	<b>688</b>	<b>*</b>
Fine default	7	9	9	9	7	7	6	5	3	1	-65
Less than 3 months	14	13	12	9	9	10	14	13	13	11	-20
3 months - less than 6 months	88	81	76	62	51	55	57	58	59	50	-14
6 months - less than 2 years	272	255	246	236	217	212	242	241	243	269	11
2 years - less than 4 years	119	119	113	116	112	118	142	136	175	165	-6
4 years or over (excluding life)	138	142	136	145	146	131	127	143	136	134	-1
Life/Section 205/206 sentences	35	31	26	21	20	19	26	30	31	30	-4
Persons recalled from supervision/licence	4	3	6	3	9	8	11	19	25	28	12
Others	2	1	4	*	1	1	*	-	-	-	n/a
<b>Adults</b>	<b>4,317</b>	<b>4,346</b>	<b>4,537</b>	<b>4,624</b>	<b>4,802</b>	<b>5,001</b>	<b>4,989</b>	<b>4,970</b>	<b>5,130</b>	<b>5,468</b>	<b>7</b>
Fine default	49	55	49	53	57	54	48	42	26	10	-63
Less than 3 months	61	66	63	60	59	71	88	112	102	88	-14
3 months - less than 6 months	357	338	358	364	353	396	386	386	367	353	-4
6 months - less than 2 years	833	819	936	935	944	948	973	918	983	1,305	33
2 years - less than 4 years	659	671	667	700	744	763	770	820	883	936	6
4 years or over (excluding life)	1,710	1,665	1,663	1,685	1,773	1,821	1,708	1,553	1,514	1,508	0
Life/Section 205/206 sentences	526	556	571	574	567	597	627	640	665	697	5
Persons recalled from supervision/licence	96	142	196	247	301	348	389	500	590	572	-3
Others	26	34	33	6	5	4	1	-	*	-	-
<b>Men</b>	<b>4,840</b>	<b>4,840</b>	<b>4,972</b>	<b>5,026</b>	<b>5,148</b>	<b>5,314</b>	<b>5,364</b>	<b>5,363</b>	<b>5,561</b>	<b>5,876</b>	<b>6</b>
Fine default	53	59	54	56	58	56	49	43	27	10	-62
Less than 3 months	71	73	70	65	63	74	95	117	108	91	-16
3 months - less than 6 months	421	397	410	400	379	422	416	419	402	376	-7
6 months - less than 2 years	1,051	1,022	1,116	1,114	1,083	1,075	1,121	1,069	1,133	1,469	30
2 years - less than 4 years	753	763	740	769	815	828	861	901	1,002	1,036	3
4 years or over (excluding life)	1,814	1,774	1,761	1,784	1,866	1,900	1,786	1,647	1,603	1,594	-1
Life/Section 205/206 sentences	552	576	586	583	570	599	637	652	678	708	4
Persons recalled from supervision/licence	99	144	201	249	308	355	398	515	607	592	-3
Others	26	33	33	5	6	5	1	-	*	-	-
<b>Women</b>	<b>156</b>	<b>161</b>	<b>194</b>	<b>200</b>	<b>227</b>	<b>248</b>	<b>251</b>	<b>251</b>	<b>254</b>	<b>280</b>	<b>10</b>
Fine default	3	5	4	5	5	4	4	3	2	1	-68
Less than 3 months	4	6	5	4	5	6	7	8	8	7	-8
3 months - less than 6 months	24	22	24	26	25	30	27	25	24	28	16
6 months - less than 2 years	54	52	67	57	78	85	94	89	92	105	13
2 years - less than 4 years	25	27	40	48	41	52	51	55	56	64	15
4 years or over (excluding life)	35	34	38	46	54	52	49	49	47	48	3
Life/Section 205/206 sentences	8	11	11	13	17	16	17	18	18	19	7
Persons recalled from supervision/licence	1	1	1	1	1	2	2	4	7	7	3
Others	2	3	4	1	*	*	*	-	-	-	-

**Offenders in custody by age, ethnic origin, religion,  
and supervision level: 30 June 2008 Table 4**

	Male	Female	All
<b>Total</b>	<b>7,349</b>	<b>412</b>	<b>7,761</b>
<b>Age</b>			
Under 16	1	-	1
16	42	5	47
17	147	7	154
18	239	11	250
19	291	13	304
20	310	14	324
21	301	18	319
22	309	23	332
23 - 24	563	38	601
25 - 29	1,434	94	1,528
30 - 34	1,080	56	1,136
35 - 39	929	47	976
40 - 44	698	47	745
45 - 49	461	15	476
50 - 54	249	14	263
55 - 59	132	7	139
60 - 64	85	2	87
65 or over	78	1	79
<b>Ethnic background</b>			
White	7,051	379	7,430
Black-Caribbean	39	5	44
Black-African	58	7	65
Black-Other	21	5	26
Indian	5	2	7
Pakistani	68	-	68
Bangladeshi	2	-	2
Chinese	45	7	52
Other Asian	24	2	26
Mixed	19	-	19
Other	17	5	22
<b>Religion</b>			
Church Of Scotland	2,409	77	2,486
Roman Catholic	1,716	77	1,793
Church Of England	89	3	92
Baptist	13	2	15
Episcopalian	5	-	5
Christian	199	24	223
Muslim	164	4	168
Buddhist	29	4	33
Jehovah Witness	4	-	4
Sikh	8	2	10
Hindu	2	-	2
Jewish	2	1	3
Mormon	3	-	3
Other	98	12	110
None	2,608	206	2,814
<b>Supervision level</b>			
High	652	18	670
Medium	3,707	270	3,977
Low	2,990	124	3,114

Note: See Section 5 for details on [supervision levels](#).

# Main crime/offence of offenders in custody by sex and custody type: 30 June 2008

## Table 5

	Number						Percentage					
	Remand			Sentenced			Remand			Sentenced		
	Men	Women	All	Men	Women	All	Men	Women	All	Men	Women	All
<b>Total crimes &amp; offences</b>	<b>1,652</b>	<b>148</b>	<b>1,800</b>	<b>5,697</b>	<b>264</b>	<b>5,961</b>	<b>100</b>	<b>100</b>	<b>100</b>	<b>100</b>	<b>100</b>	<b>100</b>
<b>Crimes</b>	1,331	121	1,452	4,340	234	4,574	81	82	81	76	89	77
<i>Non-sexual crimes of violence</i>	415	34	449	2,130	86	2,216	25	23	25	37	33	37
Homicide	63	7	70	789	29	818	4	5	4	14	11	14
Serious assault and attempted murder	247	23	270	944	41	985	15	16	15	17	16	17
Robbery	85	4	89	341	13	354	5	3	5	6	5	6
Other	20	-	20	56	3	59	1	-	1	1	1	1
<i>Crimes of indecency</i>	55	1	56	358	1	359	3	1	3	6	*	6
Rape and attempted rape	28	-	28	173	1	174	2	-	2	3	*	3
Indecent assault	1	-	1	31	-	31	*	-	*	1	-	1
Lewd and indecent behaviour	16	-	16	97	-	97	1	-	1	2	-	2
Other	10	1	11	57	-	57	1	1	1	1	-	1
<i>Crimes of dishonesty</i>	296	37	333	645	50	695	18	25	19	11	19	12
Housebreaking	82	3	85	206	3	209	5	2	5	4	1	4
Theft by opening lockfast places (OLP)	14	2	16	25	1	26	1	1	1	*	*	*
Theft from a motor vehicle (by OLP)	17	-	17	17	-	17	1	-	1	*	-	*
Theft of a motor vehicle	22	-	22	20	-	20	1	-	1	*	-	*
Shoplifting	73	15	88	163	22	185	4	10	5	3	8	3
Other theft	49	12	61	118	12	130	3	8	3	2	5	2
Fraud	18	2	20	41	6	47	1	1	1	1	2	1
Other	21	3	24	55	6	61	1	2	1	1	2	1
<i>Fire-raising, vandalism etc</i>	49	5	54	105	11	116	3	3	3	2	4	2
Fire-raising	12	2	14	40	4	44	1	1	1	1	2	1
Vandalism etc	37	3	40	65	7	72	2	2	2	1	3	1
<i>Other crimes</i>	516	44	560	1,102	86	1,188	31	30	31	19	33	20
Crimes against public justice	154	11	165	67	7	74	9	7	9	1	3	1
Handling offensive weapons	208	9	217	253	7	260	13	6	12	4	3	4
Drugs	147	23	170	763	69	832	9	16	9	13	26	14
Other	7	1	8	19	3	22	*	1	*	*	1	*
<b>Offences</b>	321	27	348	772	24	796	19	18	19	14	9	13
<i>Miscellaneous offences</i>	298	26	324	600	20	620	18	18	18	11	8	10
Common assault	134	13	147	358	13	371	8	9	8	6	5	6
Breach of the peace	102	5	107	143	7	150	6	3	6	3	3	3
Drunkenness	1	-	1	-	-	-	*	-	*	-	-	-
Breach of social work orders	1	-	1	21	-	21	*	-	*	*	-	*
Other	60	8	68	78	-	78	4	5	4	1	-	1
<i>Motor vehicle offences</i>	23	1	24	172	4	176	1	1	1	3	2	3
Dangerous and careless driving	11	-	11	40	-	40	1	-	1	1	-	1
Drunk driving	2	-	2	23	-	23	*	-	*	*	-	*
Speeding	-	-	-	-	-	-	-	-	-	-	-	-
Unlawful use of vehicle	10	1	11	109	3	112	1	1	1	2	1	2
Vehicle defect offences	-	-	-	-	-	-	-	-	-	-	-	-
Other	-	-	-	-	1	1	-	-	-	-	*	*
<b>Unknown charge</b>	-	-	-	575	6	581	-	-	-	10	2	10
<b>Other jurisdiction charge</b>	-	-	-	10	-	10	-	-	-	*	-	*

Notes: Civil prisoners are excluded from this table. See Section 5 for definitions of [main crime/offence](#) and [crime categories](#).

**Community Justice Authority and local authority home area of offenders in custody  
by age and sex: 30 June 2008**

**Table 6**

	Adult			Young offender			All			Imprisonment rate per 100,000 population <sup>1</sup>
	Men	Women	All	Men	Women	All	Men	Women	All	
<b>Total</b>	<b>6,319</b>	<b>362</b>	<b>6,681</b>	<b>1,030</b>	<b>50</b>	<b>1,080</b>	<b>7,349</b>	<b>412</b>	<b>7,761</b>	<b>168</b>
<b>Tayside</b>	509	30	<b>539</b>	69	8	<b>77</b>	578	38	<b>616</b>	<b>187</b>
Angus	88	4	<b>92</b>	9	1	<b>10</b>	97	5	<b>102</b>	<i>113</i>
Dundee City	321	18	<b>339</b>	45	6	<b>51</b>	366	24	<b>390</b>	<i>328</i>
Perth & Kinross	100	8	<b>108</b>	15	1	<b>16</b>	115	9	<b>124</b>	<i>104</i>
<b>South West Scotland</b>	601	36	<b>637</b>	137	6	<b>143</b>	738	42	<b>780</b>	<b>183</b>
Dumfries & Galloway	132	10	<b>142</b>	30	-	<b>30</b>	162	10	<b>172</b>	<i>139</i>
East Ayrshire	142	11	<b>153</b>	40	1	<b>41</b>	182	12	<b>194</b>	<i>197</i>
North Ayrshire	193	10	<b>203</b>	41	2	<b>43</b>	234	12	<b>246</b>	<i>221</i>
South Ayrshire	134	5	<b>139</b>	26	3	<b>29</b>	160	8	<b>168</b>	<i>180</i>
<b>Fife and Forth Valley</b>	551	39	<b>590</b>	127	7	<b>134</b>	678	46	<b>724</b>	<b>136</b>
Clackmannanshire	52	5	<b>57</b>	11	1	<b>12</b>	63	6	<b>69</b>	<i>169</i>
Falkirk	110	4	<b>114</b>	28	1	<b>29</b>	138	5	<b>143</b>	<i>116</i>
Fife	308	20	<b>328</b>	67	2	<b>69</b>	375	22	<b>397</b>	<i>134</i>
Stirling	81	10	<b>91</b>	21	3	<b>24</b>	102	13	<b>115</b>	<i>160</i>
<b>Glasgow City</b>	1,388	69	<b>1,457</b>	185	4	<b>189</b>	1,573	73	<b>1,646</b>	<b>337</b>
<b>Northern</b>	580	46	<b>626</b>	106	7	<b>113</b>	686	53	<b>739</b>	<b>109</b>
Aberdeen City	262	21	<b>283</b>	49	1	<b>50</b>	311	22	<b>333</b>	<i>188</i>
Aberdeenshire	85	10	<b>95</b>	6	3	<b>9</b>	91	13	<b>104</b>	<i>53</i>
Eilean Siar	12	-	<b>12</b>	3	-	<b>3</b>	15	-	<b>15</b>	<i>69</i>
Highland	155	8	<b>163</b>	30	3	<b>33</b>	185	11	<b>196</b>	<i>109</i>
Moray	53	5	<b>58</b>	13	-	<b>13</b>	66	5	<b>71</b>	<i>98</i>
Orkney Islands	3	-	<b>3</b>	2	-	<b>2</b>	5	-	<b>5</b>	<i>30</i>
Shetland Islands	10	2	<b>12</b>	3	-	<b>3</b>	13	2	<b>15</b>	<i>85</i>
<b>Lothian and Borders</b>	793	38	<b>831</b>	133	4	<b>137</b>	926	42	<b>968</b>	<b>126</b>
East Lothian	45	3	<b>48</b>	6	-	<b>6</b>	51	3	<b>54</b>	<i>70</i>
Edinburgh, City of	515	29	<b>544</b>	80	3	<b>83</b>	595	32	<b>627</b>	<i>156</i>
Midlothian	46	-	<b>46</b>	15	1	<b>16</b>	61	1	<b>62</b>	<i>95</i>
Scottish Borders	66	1	<b>67</b>	12	-	<b>12</b>	78	1	<b>79</b>	<i>86</i>
West Lothian	121	5	<b>126</b>	20	-	<b>20</b>	141	5	<b>146</b>	<i>108</i>
<b>Lanarkshire</b>	665	41	<b>706</b>	143	5	<b>148</b>	808	46	<b>854</b>	<b>166</b>
North Lanarkshire	346	20	<b>366</b>	76	4	<b>80</b>	422	24	<b>446</b>	<i>170</i>
South Lanarkshire	319	21	<b>340</b>	67	1	<b>68</b>	386	22	<b>408</b>	<i>161</i>
<b>Northern Strathclyde</b>	702	27	<b>729</b>	109	4	<b>113</b>	811	31	<b>842</b>	<b>164</b>
Argyll & Bute	53	2	<b>55</b>	13	-	<b>13</b>	66	2	<b>68</b>	<i>90</i>
East Dunbartonshire	49	3	<b>52</b>	8	-	<b>8</b>	57	3	<b>60</b>	<i>70</i>
East Renfrewshire	55	2	<b>57</b>	4	-	<b>4</b>	59	2	<b>61</b>	<i>86</i>
Inverclyde	130	6	<b>136</b>	27	1	<b>28</b>	157	7	<b>164</b>	<i>246</i>
Renfrewshire	240	8	<b>248</b>	33	2	<b>35</b>	273	10	<b>283</b>	<i>203</i>
West Dunbartonshire	175	6	<b>181</b>	24	1	<b>25</b>	199	7	<b>206</b>	<i>276</i>
<b>Outwith Scotland</b>	258	17	<b>275</b>	12	-	<b>12</b>	270	17	<b>287</b>	
<b>No fixed abode</b>	269	19	<b>288</b>	9	5	<b>14</b>	278	24	<b>302</b>	
<b>Unidentifiable address</b>	3	-	<b>3</b>	-	-	<b>-</b>	3	-	<b>3</b>	

Notes: See Section 5 for details on [Community Justice Authorities](#). Details on the length of sentence of offenders in custody are published on the web in Table 6a.

1. The imprisonment rate is based on the General Register Office for Scotland mid-year 16+ population estimates for 2008.

**Liberations from prison by custody type/sentence length and local authority area of home address: 2008-09** **Table 7**

	Remand	Fine default	Less than 6 months	6 months - less than 1 year	1 year - less than 4 years	4 years or over	Life/Section 205 /206 sentences	Recalls from supervision/license	Others	Total
<b>Total</b>	<b>10,118</b>	<b>562</b>	<b>4,512</b>	<b>2,979</b>	<b>2,853</b>	<b>518</b>	<b>31</b>	<b>388</b>	<b>33</b>	<b>21,994</b>
<b>Tayside</b>	962	33	484	302	236	37	2	34	-	<b>2,090</b>
Angus	170	10	59	39	34	3	1	12	-	<b>328</b>
Dundee City	590	13	303	190	156	30	-	13	-	<b>1,295</b>
Perth & Kinross	202	10	122	73	46	4	1	9	-	<b>467</b>
<b>South West Scotland</b>	811	89	586	435	376	34	1	36	2	<b>2,370</b>
Dumfries & Galloway	165	17	126	70	64	12	-	11	-	<b>465</b>
East Ayrshire	205	24	161	119	111	11	-	9	-	<b>640</b>
North Ayrshire	283	42	139	137	122	9	1	12	1	<b>746</b>
South Ayrshire	158	6	160	109	79	2	-	4	1	<b>519</b>
<b>Fife and Forth Valley</b>	1,213	57	478	331	287	58	2	43	-	<b>2,469</b>
Clackmannanshire	140	4	36	30	31	3	-	6	-	<b>250</b>
Falkirk	337	12	157	51	63	11	1	10	-	<b>642</b>
Fife	588	27	218	175	150	39	-	23	-	<b>1,220</b>
Stirling	148	14	67	75	43	5	1	4	-	<b>357</b>
<b>Glasgow City</b>	2,147	98	826	482	528	116	12	90	15	<b>4,314</b>
<b>Northern</b>	1,124	75	399	305	325	34	1	32	5	<b>2,300</b>
Aberdeen City	480	34	145	108	159	12	-	10	3	<b>951</b>
Aberdeenshire	103	8	44	40	40	6	-	9	2	<b>252</b>
Eilean Siar	10	1	9	21	11	-	-	-	-	<b>52</b>
Highland	366	14	128	97	74	11	1	10	-	<b>701</b>
Moray	128	18	61	29	27	4	-	2	-	<b>269</b>
Orkney Islands	15	-	4	2	3	-	-	-	-	<b>24</b>
Shetland Islands	22	-	8	8	11	1	-	1	-	<b>51</b>
<b>Lothian and Borders</b>	1,299	77	621	366	317	66	2	43	1	<b>2,792</b>
East Lothian	69	-	58	21	10	3	-	6	-	<b>167</b>
Edinburgh, City of	825	47	348	220	207	33	2	30	1	<b>1,713</b>
Midlothian	84	8	41	23	22	8	-	1	-	<b>187</b>
Scottish Borders	73	1	67	48	35	5	-	1	-	<b>230</b>
West Lothian	248	21	107	54	43	17	-	5	-	<b>495</b>
<b>Lanarkshire</b>	1,110	29	473	349	335	51	3	44	3	<b>2,397</b>
North Lanarkshire	572	15	235	202	165	25	2	27	2	<b>1,245</b>
South Lanarkshire	538	14	238	147	170	26	1	17	1	<b>1,152</b>
<b>Northern Strathclyde</b>	842	62	358	299	308	74	6	39	5	<b>1,993</b>
Argyll & Bute	103	6	42	35	24	3	-	4	-	<b>217</b>
East Dunbartonshire	62	-	21	14	24	7	-	2	-	<b>130</b>
East Renfrewshire	35	4	23	19	24	5	-	6	2	<b>118</b>
Inverclyde	149	12	65	70	46	11	3	6	-	<b>362</b>
Renfrewshire	272	10	92	78	98	29	-	13	1	<b>593</b>
West Dunbartonshire	221	30	115	83	92	19	3	8	2	<b>573</b>
<b>Outwith Scotland</b>	267	16	70	40	85	21	-	9	-	<b>508</b>
<b>No fixed abode</b>	338	26	215	69	55	27	2	18	2	<b>752</b>
<b>Unidentifiable address</b>	5	-	2	1	1	-	-	-	-	<b>9</b>

Notes: Figures include only those prisoners who are liberated into the community. This excludes prisoners who are deceased, deported, in a hospital, transferred cross border, repatriated, and liberated on appeal or to immigration authorities. If a prisoner is liberated more than once during the year, they will be counted more than once. Further breakdowns for adults and young offenders are published on the web in Tables 7a-b.

**Prisoners released on Home Detention Curfew (HDC): August 2006 to March 2009**

**Table 8**

	Average daily population on HDC					Number of HDC releases				
	Men	Women	Adults	Young offenders	All	Men	Women	Adults	Young offenders	All
Aug 06	148	10	133	24	157	83	9	83	9	92
Sep 06	146	12	139	19	158	85	5	72	18	90
Oct 06	179	14	162	31	193	143	12	132	23	155
Nov 06	264	22	247	40	287	170	20	163	27	190
Dec 06	274	29	258	45	303	127	24	124	27	151
Jan 07	242	31	234	39	273	115	16	109	22	131
Feb 07	230	30	231	29	260	135	10	117	28	145
Mar 07	234	32	230	36	266	122	20	115	27	142
Apr 07	232	41	236	37	273	142	29	153	18	171
May 07	251	40	255	36	291	163	15	150	28	178
Jun 07	254	32	240	46	286	136	29	126	39	165
Jul 07	258	35	245	48	293	133	15	124	24	148
Aug 07	245	40	239	46	285	153	22	131	44	175
Sep 07	262	41	248	55	303	159	13	139	33	172
Oct 07	267	32	236	62	298	168	18	131	55	186
Nov 07	291	28	254	65	319	166	11	143	34	177
Dec 07	303	33	274	62	336	158	24	149	33	182
Jan 08	291	34	267	58	325	131	14	115	30	145
Feb 08	298	35	272	61	333	152	18	131	39	170
Mar 08	324	39	300	63	364	196	17	180	33	213
Apr 08	346	40	315	71	386	184	30	169	45	214
May 08	331	51	315	68	383	159	29	152	36	188
Jun 08	334	49	320	63	383	161	16	151	26	177
Jul 08	325	44	314	55	369	140	18	130	28	158
Aug 08	328	42	317	53	370	149	21	152	18	170
Sep 08	319	38	322	34	356	126	16	131	11	142
Oct 08	322	42	329	35	364	177	29	178	28	206
Nov 08	332	54	346	39	385	154	22	161	15	176
Dec 08	348	52	362	39	401	203	20	195	28	223
Jan 09	331	46	333	44	377	94	15	87	22	109
Feb 09	306	39	302	43	345	133	21	139	15	154
Mar 09	300	38	299	39	339	124	15	115	24	139

Notes: See Section 5 for details of the [HDC scheme](#). Due to technical difficulties, the number of HDC recalls is not included in the table. This will be added to the web table once the data become available.

## Receptions to penal establishments by type of custody: 1999-00 to 2008-09 Table 9

	1999-00	2000-01	2001-02	2002-03	2003-04	2004-05	2005-06	2006-07	2007-08	2008-09
<b>Total</b>	<b>35,012</b>	<b>33,258</b>	<b>34,786</b>	<b>39,512</b>	<b>38,573</b>	<b>37,632</b>	<b>39,227</b>	<b>43,852</b>	<b>40,791</b>	<b>39,448</b>
<i>Remand</i>	14,626	14,062	15,725	19,198	18,963	18,892	19,593	23,181	22,491	22,754
<i>Unruly certificate</i>	12	18	24	25	23	20	28	33	15	11
<i>Persons under sentence</i>	20,336	19,136	18,953	20,084	19,357	18,584	19,477	20,403	18,227	16,576
Young offenders	3,910	3,552	3,421	3,223	2,774	2,602	2,941	2,984	2,761	2,454
Direct sentenced	2,582	2,436	2,312	2,207	1,949	1,908	2,170	2,286	2,359	2,269
Fine defaulters	1,328	1,116	1,109	1,016	825	694	771	698	402	185
Adults	16,247	15,393	15,352	16,652	16,318	15,703	16,188	16,949	15,054	13,702
Direct sentenced	9,217	8,943	9,470	10,571	10,255	10,299	10,746	11,684	11,846	12,381
Fine defaulters	7,030	6,450	5,882	6,081	6,063	5,404	5,442	5,265	3,208	1,321
Recalls from supervision/licence	179	191	180	209	265	279	348	470	412	420
<i>Persons sentenced by court martial</i>	3	2	2	3	1	5	-	-	1	1
<i>Civil prisoners</i>	17	10	8	11	10	7	4	4	11	4
<i>Receptions on remand in legalised police cells</i>	18	30	74	191	219	124	125	231	46	102
<b>Men</b>	<b>32,623</b>	<b>31,053</b>	<b>32,256</b>	<b>36,458</b>	<b>35,358</b>	<b>34,506</b>	<b>36,108</b>	<b>40,388</b>	<b>37,336</b>	<b>35,973</b>
<i>Remand</i>	13,450	13,042	14,402	17,455	17,111	17,085	17,796	21,129	20,256	20,416
<i>Unruly certificate</i>	10	18	22	24	22	19	28	30	14	11
<i>Persons under sentence</i>	19,125	17,953	17,755	18,779	18,013	17,272	18,161	19,018	17,011	15,443
Young offenders	3,683	3,349	3,237	3,052	2,607	2,451	2,827	2,810	2,630	2,326
Direct sentenced	2,427	2,303	2,185	2,085	1,833	1,787	2,082	2,156	2,246	2,150
Fine defaulters	1,256	1,046	1,052	967	774	664	745	654	384	176
Adults	15,268	14,416	14,338	15,519	15,145	14,547	14,991	15,751	13,979	12,707
Direct sentenced	8,759	8,513	8,934	9,990	9,607	9,585	10,002	10,884	11,017	11,475
Fine defaulters	6,509	5,903	5,404	5,529	5,538	4,962	4,989	4,867	2,962	1,232
Recalls from supervision/licence	174	188	180	208	261	274	343	457	402	410
<i>Persons sentenced by court martial</i>	3	2	2	3	1	5	-	-	1	1
<i>Civil prisoners</i>	17	10	8	11	10	7	4	3	10	3
<i>Receptions on remand in legalised police cells</i>	18	28	67	186	201	118	119	208	44	99
<b>Women</b>	<b>2,389</b>	<b>2,205</b>	<b>2,530</b>	<b>3,054</b>	<b>3,215</b>	<b>3,126</b>	<b>3,119</b>	<b>3,464</b>	<b>3,455</b>	<b>3,475</b>
<i>Remand</i>	1,176	1,020	1,323	1,743	1,852	1,807	1,797	2,052	2,235	2,338
<i>Unruly certificate</i>	2	-	2	1	1	1	-	3	1	-
<i>Persons under sentence</i>	1,211	1,183	1,198	1,305	1,344	1,312	1,316	1,385	1,216	1,133
Young offenders	227	203	184	171	167	151	114	174	131	128
Direct sentenced	155	133	127	122	116	121	88	130	113	119
Fine defaulters	72	70	57	49	51	30	26	44	18	9
Adults	979	977	1,014	1,133	1,173	1,156	1,197	1,198	1,075	995
Direct sentenced	458	430	536	581	648	714	744	800	829	906
Fine defaulters	521	547	478	552	525	442	453	398	246	89
Recalls from supervision/licence	5	3	-	1	4	5	5	13	10	10
<i>Persons sentenced by court martial</i>	-	-	-	-	-	-	-	-	-	-
<i>Civil prisoners</i>	-	-	-	-	-	-	-	1	1	1
<i>Receptions on remand in legalised police cells</i>	-	2	7	5	18	6	6	23	2	3

**Sentenced receptions to penal establishments by sentencing court:1999-00 to 2008-09**  
**Table 10**

	1999-00	2000-01	2001-02	2002-03	2003-04	2004-05	2005-06	2006-07	2007-08	2008-09
<b>Total</b>	<b>20,157</b>	<b>18,945</b>	<b>18,773</b>	<b>19,875</b>	<b>19,092</b>	<b>18,305</b>	<b>19,129</b>	<b>19,933</b>	<b>17,815</b>	<b>16,156</b>
High	1,070	979	1,047	1,221	1,238	947	849	880	851	789
Sheriff (solemn & summary procedure)	14,243	13,598	13,828	14,764	14,032	14,131	15,397	16,089	14,960	14,388
District & Stipendiary Magistrate <sup>1</sup>	4,756	4,236	3,779	3,804	3,712	3,123	2,781	2,867	1,891	881
Other	88	132	119	86	110	104	102	97	113	98
	<b>%</b>									
High	5	5	6	6	6	5	4	4	5	5
Sheriff (solemn & summary procedure)	71	72	74	74	73	77	80	81	84	89
District & Stipendiary Magistrate <sup>1</sup>	24	22	20	19	19	17	15	14	11	5
Other	*	1	1	*	1	1	1	*	1	1

Note: Excludes receptions of people recalled from supervision/licence as court details are normally unavailable.

1. Includes Justice of the Peace courts from March 2008.

**Unruly certificate receptions by sex, age, crime/offence and time spent in custody:**  
**1999-00 to 2008-09**  
**Table 11**

	1999-00	2000-01	2001-02	2002-03	2003-04	2004-05	2005-06	2006-07	2007-08	2008-09
<b>Total</b>	<b>12</b>	<b>18</b>	<b>24</b>	<b>25</b>	<b>23</b>	<b>20</b>	<b>28</b>	<b>33</b>	<b>15</b>	<b>11</b>
<i>Sex</i>										
Male	10	18	22	24	22	19	28	30	14	11
Female	2	-	2	1	1	1	-	3	1	-
<i>Age</i>										
14	1	4	1	2	5	3	2	8	3	-
15	4	11	14	16	13	9	24	19	10	10
16	6	3	7	5	5	7	1	5	2	-
17	1	-	2	2	-	1	1	1	-	1
<i>Crime/offence</i>										
All crimes	10	16	19	24	19	19	23	25	12	8
Non-sexual crimes of violence	7	9	8	20	10	12	11	9	3	3
Crimes of indecency	-	-	-	1	1	-	-	1	-	1
Crimes of dishonesty	3	3	4	1	6	2	5	3	3	-
Fire-raising, vandalism etc.	-	-	1	1	1	2	-	4	-	-
Other crimes	-	4	6	1	1	3	7	8	6	4
All offences	2	2	5	1	4	1	5	8	3	3
Miscellaneous offences	2	1	5	-	4	1	5	8	3	3
Motor vehicle offences	-	1	-	1	-	-	-	-	-	-
<i>Time spent in custody</i>										
Less than 7 days	1	3	7	6	7	8	8	8	6	7
7 - 13 days	6	9	10	14	7	4	13	15	5	3
14 - 29 days	2	3	3	1	5	4	3	6	2	-
30 - 59 days	1	1	2	1	3	2	3	3	2	-
60 -90 days	-	1	1	3	-	-	-	-	-	1
Greater than 90 days	2	1	1	-	1	2	1	1	-	-
Average time spent in custody (days)	30	28	19	16	19	17	17	16	12	10

Note: See Section 5 for details on unruly certificates.

**Direct sentenced receptions to penal establishments by age and sex:  
1999-00 to 2008-09**

**Table 12**

	1999-00	2000-01	2001-02	2002-03	2003-04	2004-05	2005-06	2006-07	2007-08	2008-09
<b>Total</b>	<b>11,799</b>	<b>11,379</b>	<b>11,782</b>	<b>12,778</b>	<b>12,204</b>	<b>12,207</b>	<b>12,916</b>	<b>13,970</b>	<b>14,205</b>	<b>14,650</b>
Under 16	1	2	1	1	5	-	2	2	4	5
16	136	81	100	132	100	123	134	157	130	107
17	479	350	349	373	340	310	375	390	408	378
18	647	613	512	481	444	494	515	561	584	583
19	694	672	629	592	499	527	570	577	622	593
20	625	718	721	628	561	454	574	599	611	603
21 - 30	5,750	5,442	5,727	6,270	5,996	5,752	5,684	6,082	6,365	6,422
31 - 40	2,497	2,506	2,592	3,036	3,006	3,082	3,404	3,632	3,524	3,786
41 - 50	653	687	803	881	897	1,118	1,211	1,521	1,463	1,642
Over 50	317	308	348	384	356	347	447	449	494	531
<b>Men</b>	<b>11,186</b>	<b>10,816</b>	<b>11,119</b>	<b>12,075</b>	<b>11,440</b>	<b>11,372</b>	<b>12,084</b>	<b>13,040</b>	<b>13,263</b>	<b>13,625</b>
Under 16	1	2	1	1	4	-	2	2	4	5
16	131	76	97	126	98	117	134	145	125	102
17	452	337	332	353	324	292	366	378	385	354
18	610	575	497	450	429	469	489	524	562	553
19	645	642	589	562	457	497	546	547	586	569
20	588	671	669	593	521	412	545	560	584	567
21 - 30	5,437	5,157	5,396	5,918	5,604	5,332	5,278	5,622	5,908	5,938
31 - 40	2,391	2,389	2,442	2,855	2,829	2,880	3,153	3,406	3,287	3,503
41 - 50	622	663	761	845	836	1,046	1,146	1,431	1,371	1,536
Over 50	309	304	335	372	338	327	425	425	451	498
<b>Women</b>	<b>613</b>	<b>563</b>	<b>663</b>	<b>703</b>	<b>764</b>	<b>835</b>	<b>832</b>	<b>930</b>	<b>942</b>	<b>1,025</b>
Under 16	-	-	-	-	1	-	-	-	-	-
16	5	5	3	6	2	6	-	12	5	5
17	27	13	17	20	16	18	9	12	23	24
18	37	38	15	31	15	25	26	37	22	30
19	49	30	40	30	42	30	24	30	36	24
20	37	47	52	35	40	42	29	39	27	36
21 - 30	313	285	331	352	392	420	406	460	457	484
31 - 40	106	117	150	181	177	202	251	226	237	283
41 - 50	31	24	42	36	61	72	65	90	92	106
Over 50	8	4	13	12	18	20	22	24	43	33

**Direct sentenced receptions to penal establishments by main crime/offence:  
1999-00 to 2008-09**

**Table 13**

	1999-00	2000-01	2001-02	2002-03	2003-04	2004-05	2005-06	2006-07	2007-08	2008-09
<b>Total crimes &amp; offences</b>	<b>11,799</b>	<b>11,379</b>	<b>11,782</b>	<b>12,778</b>	<b>12,204</b>	<b>12,207</b>	<b>12,916</b>	<b>13,970</b>	<b>14,205</b>	<b>14,650</b>
<b>Crimes</b>	<b>8,669</b>	<b>8,231</b>	<b>8,649</b>	<b>9,116</b>	<b>8,695</b>	<b>8,437</b>	<b>8,650</b>	<b>9,290</b>	<b>9,558</b>	<b>9,897</b>
<i>Non-sexual crimes of violence</i>	1,231	1,261	1,398	1,578	1,708	1,551	1,485	1,520	1,675	1,766
Homicide	96	99	105	116	161	155	114	129	146	126
Serious assault and attempted murder	620	667	767	891	996	897	899	927	1,040	1,154
Robbery	482	455	502	512	493	437	398	398	411	428
Other	33	40	24	59	58	62	74	66	78	58
<i>Crimes of indecency</i>	227	200	221	211	233	217	248	213	182	197
Rape and attempted rape	35	38	48	55	51	54	62	58	50	43
Indecent assault	42	29	24	23	34	34	22	15	11	9
Lewd and indecent behaviour	116	96	125	105	108	89	119	105	74	109
Other	34	37	24	28	40	40	45	35	47	36
<i>Crimes of dishonesty</i>	5,187	4,726	4,921	4,834	4,322	4,097	3,923	3,986	3,746	3,933
Housebreaking	1,350	1,251	1,226	1,174	1,102	990	889	926	779	782
Theft by opening lockfast places (OLP)	173	166	191	172	170	111	126	113	137	139
Theft from a motor vehicle (by OLP)	138	112	110	156	149	158	120	111	139	127
Theft of a motor vehicle	522	471	355	356	237	207	164	180	145	174
Shoplifting	n/a	n/a	n/a	n/a	n/a	1,453	1,526	1,487	1,402	1,450
Other theft	2,420	2,250	2,552	2,468	2,208	769	689	666	648	708
Fraud	149	124	139	131	132	112	137	180	186	239
Other	435	352	348	377	324	297	272	323	310	314
<i>Fire-raising, vandalism etc</i>	221	216	235	280	311	318	360	366	396	414
Fire-raising	24	33	40	44	57	50	72	70	77	82
Vandalism etc	197	183	195	236	254	268	288	296	319	332
<i>Other crimes</i>	1,803	1,828	1,874	2,213	2,121	2,254	2,634	3,205	3,559	3,587
Crimes against public justice	408	400	434	535	496	504	674	926	1,036	1,011
Handling offensive weapons	491	581	541	720	643	757	914	1,071	1,118	1,170
Drugs	879	832	887	949	969	970	1,005	1,121	1,293	1,329
Other	25	15	12	9	13	23	41	87	112	77
<b>Offences</b>	<b>3,072</b>	<b>3,067</b>	<b>3,069</b>	<b>3,608</b>	<b>3,449</b>	<b>3,716</b>	<b>4,238</b>	<b>4,647</b>	<b>4,612</b>	<b>4,732</b>
<i>Miscellaneous offences</i>	1,944	1,865	1,943	2,186	2,086	2,511	3,067	3,493	3,564	3,842
Common assault	1,090	1,045	1,056	1,134	1,121	1,387	1,601	1,775	1,862	2,041
Breach of the peace	759	727	753	895	789	927	1,172	1,398	1,411	1,424
Drunkenness	4	-	2	3	2	1	-	3	1	2
Breach of social work orders	n/a	n/a	n/a	n/a	n/a	59	89	132	80	102
Other	91	93	132	154	174	137	205	185	210	273
<i>Motor vehicle offences</i>	1,128	1,202	1,126	1,422	1,363	1,205	1,171	1,154	1,048	890
Dangerous and careless driving	129	134	113	177	171	155	142	169	175	154
Drunk driving	147	175	145	194	175	186	161	194	167	164
Speeding	1	2	1	1	-	-	-	4	-	-
Unlawful use of vehicle	843	886	859	1,034	1,003	853	851	773	692	562
Vehicle defect offences	1	-	-	-	-	2	-	2	-	2
Other	7	5	8	16	14	9	17	12	14	8
<b>Unknown charge</b>	<b>-</b>	<b>1</b>	<b>1</b>	<b>1</b>	<b>-</b>	<b>-</b>	<b>2</b>	<b>-</b>	<b>-</b>	<b>-</b>
<b>Other jurisdiction charge</b>	<b>58</b>	<b>80</b>	<b>63</b>	<b>53</b>	<b>60</b>	<b>54</b>	<b>26</b>	<b>33</b>	<b>35</b>	<b>21</b>

Notes: Prior to 2004-05, shoplifting is included in other theft and breaches of social work orders are included in other. Further breakdowns for adults and young offenders by sex are published on the web in Tables 13a-f.

**Direct sentenced receptions to penal establishments by length of sentence, age and sex: 1999-00 to 2008-09**

**Table 14**

	1999-00	2000-01	2001-02	2002-03	2003-04	2004-05	2005-06	2006-07	2007-08	2008-09
<b>Total</b>	<b>11,799</b>	<b>11,379</b>	<b>11,782</b>	<b>12,778</b>	<b>12,204</b>	<b>12,207</b>	<b>12,916</b>	<b>13,970</b>	<b>14,205</b>	<b>14,650</b>
Less than 30 days	335	296	312	349	293	321	386	464	490	530
30-59 days	744	579	615	739	607	660	968	1,131	1,020	900
60-89 days	1,377	1,203	1,230	1,429	1,290	1,702	2,214	2,260	2,114	1,682
90 days/3 months	2,419	2,344	2,316	2,383	2,248	2,462	2,253	1,772	1,581	1,179
Over 3 months - less than 6 months	2,196	2,093	2,248	2,348	2,317	2,898	2,885	2,976	2,986	2,983
6 months - less than 2 years	3,380	3,468	3,642	3,913	3,757	2,725	2,756	3,794	4,291	5,558
2 years - less than 4 years	704	741	675	794	864	765	857	969	1,067	1,166
4 years & over (excluding life)	588	584	681	749	721	582	526	527	581	562
Life/Section 205	56	71	63	74	107	92	71	77	75	90
Average sentence imposed (days)	300	317	319	330	344	296	278	293	313	324
<b>Young offenders</b>	<b>2,582</b>	<b>2,436</b>	<b>2,312</b>	<b>2,207</b>	<b>1,949</b>	<b>1,908</b>	<b>2,170</b>	<b>2,286</b>	<b>2,359</b>	<b>2,269</b>
Less than 30 days	73	59	52	76	48	50	57	58	76	69
30-59 days	157	105	96	110	95	89	125	133	154	127
60-89 days	313	248	239	217	171	248	384	298	287	224
90 days/3 months	553	537	509	399	374	406	427	281	238	193
Over 3 months - less than 6 months	474	429	431	357	310	411	417	482	472	416
6 months - less than 2 years	810	842	787	812	721	511	515	805	861	978
2 years - less than 4 years	109	120	123	137	125	127	154	155	176	184
4 years & over (excluding life)	84	83	73	86	92	56	76	61	81	63
Life/Section 205	9	13	2	13	13	10	15	13	14	15
Average sentence imposed (days)	252	267	265	297	322	267	276	291	315	315
<b>Adults</b>	<b>9,217</b>	<b>8,943</b>	<b>9,470</b>	<b>10,571</b>	<b>10,255</b>	<b>10,299</b>	<b>10,746</b>	<b>11,684</b>	<b>11,846</b>	<b>12,381</b>
Less than 30 days	262	237	260	273	245	271	329	406	414	461
30-59 days	587	474	519	629	512	571	843	998	866	773
60-89 days	1,064	955	991	1,212	1,119	1,454	1,830	1,962	1,827	1,458
90 days/3 months	1,866	1,807	1,807	1,984	1,874	2,056	1,826	1,491	1,343	986
Over 3 months - less than 6 months	1,722	1,664	1,817	1,991	2,007	2,487	2,468	2,494	2,514	2,567
6 months - less than 2 years	2,570	2,626	2,855	3,101	3,036	2,214	2,241	2,989	3,430	4,580
2 years - less than 4 years	595	621	552	657	739	638	703	814	891	982
4 years & over (excluding life)	504	501	608	663	629	526	450	466	500	499
Life/Section 205	47	58	61	61	94	82	56	64	61	75
Average sentence imposed (days)	314	330	332	337	348	301	279	294	312	326
<b>Men</b>	<b>11,186</b>	<b>10,816</b>	<b>11,119</b>	<b>12,075</b>	<b>11,440</b>	<b>11,372</b>	<b>12,084</b>	<b>13,040</b>	<b>13,263</b>	<b>13,625</b>
Less than 30 days	318	283	281	330	271	303	352	419	443	486
30-59 days	687	542	571	694	560	594	883	1,035	941	811
60-89 days	1,291	1,127	1,149	1,344	1,191	1,572	2,069	2,113	1,974	1,561
90 days/3 months	2,288	2,212	2,170	2,246	2,097	2,296	2,085	1,655	1,492	1,100
Over 3 months - less than 6 months	2,107	1,986	2,126	2,200	2,187	2,690	2,737	2,790	2,806	2,775
6 months - less than 2 years	3,193	3,314	3,458	3,714	3,512	2,536	2,572	3,524	3,974	5,164
2 years - less than 4 years	678	714	641	752	822	724	807	918	998	1,097
4 years & over (excluding life)	573	570	660	726	698	566	512	510	560	545
Life/Section 205	51	68	63	69	102	91	67	76	75	86
Average sentence imposed (days)	304	321	323	334	349	302	282	297	316	328
<b>Women</b>	<b>613</b>	<b>563</b>	<b>663</b>	<b>703</b>	<b>764</b>	<b>835</b>	<b>832</b>	<b>930</b>	<b>942</b>	<b>1,025</b>
Less than 30 days	17	13	31	19	22	18	34	45	47	44
30-59 days	57	37	44	45	47	66	85	96	79	89
60-89 days	86	76	81	85	99	130	145	147	140	121
90 days/3 months	131	132	146	137	151	166	168	117	89	79
Over 3 months - less than 6 months	89	107	122	148	130	208	148	186	180	208
6 months - less than 2 years	187	154	184	199	245	189	184	270	317	394
2 years - less than 4 years	26	27	34	42	42	41	50	51	69	69
4 years & over (excluding life)	15	14	21	23	23	16	14	17	21	17
Life/Section 205	5	3	-	5	5	1	4	1	-	4
Average sentence imposed (days)	228	236	245	260	266	210	217	235	274	271

Note: Average sentence imposed excludes life and Section 205 sentences.

**Length of sentence imposed for direct sentenced receptions by main crime/offence, age and sex: 2008-09** **Table 15**

	Number received	Average sentence (days)	Percentage sentenced to								
			< 30 days	30-59 days	60-89 days	90 days-3 months	Over 3 months - less than 6 months	6 months - less than 2 years	2 years - less than 4 years	4 years & over (excluding life)	
<b>Total</b>											
Serious assault and attempted murder	1,149	772	1	1	2	3	5	48	25	16	
Robbery	427	795	1	1	2	2	5	43	32	15	
Housebreaking	782	287	1	3	5	7	21	55	7	1	
Theft by opening lockfast places (OLP)	139	208	4	7	6	9	22	51	1	-	
Theft from a motor vehicle (by OLP)	127	210	1	2	7	16	29	43	2	-	
Theft of a motor vehicle	174	180	2	3	10	11	30	43	1	-	
Shoplifting	1,450	132	7	11	18	10	29	26	*	-	
Fraud	239	257	1	4	24	6	14	41	9	1	
Drugs	1,329	618	2	3	5	4	9	42	25	10	
Common assault	2,041	207	2	6	12	11	26	40	4	*	
Breach of the peace	1,424	142	5	12	21	11	24	26	1	-	
Unlawful use of a motor vehicle	562	194	3	3	5	6	28	54	*	-	
<b>Young offenders</b>											
Serious assault and attempted murder	349	671	1	1	2	3	6	52	25	11	
Robbery	92	609	1	-	2	1	4	56	30	5	
Housebreaking	126	270	-	3	6	7	21	60	3	-	
Theft by opening lockfast places (OLP)	15	219	7	13	7	-	27	47	-	-	
Theft from a motor vehicle (by OLP)	12	249	-	-	8	25	17	42	8	-	
Theft of a motor vehicle	66	166	3	3	12	17	23	41	2	-	
Shoplifting	70	127	4	19	16	19	20	23	-	-	
Fraud	15	129	-	-	47	-	27	23	-	-	
Drugs	87	440	1	2	8	3	11	48	23	2	
Common assault	443	215	1	7	12	12	23	44	2	-	
Breach of the peace	192	166	5	9	13	11	27	33	2	-	
Unlawful use of a motor vehicle	36	204	-	8	6	6	25	56	-	-	
<b>Adults</b>											
Serious assault and attempted murder	800	817	1	1	1	3	5	46	24	18	
Robbery	335	846	1	1	2	3	6	39	32	17	
Housebreaking	656	291	1	3	5	7	21	54	8	1	
Theft by opening lockfast places (OLP)	124	206	3	6	6	10	21	52	2	-	
Theft from a motor vehicle (by OLP)	115	206	1	2	7	15	30	43	2	-	
Theft of a motor vehicle	108	188	2	3	8	8	35	44	-	-	
Shoplifting	1,380	133	7	10	18	9	29	26	*	-	
Fraud	224	266	1	4	22	6	13	42	9	1	
Drugs	1,242	630	3	3	5	4	9	41	25	11	
Common assault	1,598	205	2	6	12	11	27	39	4	*	
Breach of the peace	1,232	138	5	12	22	11	24	25	1	-	
Unlawful use of a motor vehicle	526	194	4	3	5	6	28	54	*	-	
<b>Men</b>											
Serious assault and attempted murder	1,048	798	1	1	2	3	4	48	26	17	
Robbery	405	813	*	1	2	2	5	41	32	16	
Housebreaking	760	288	1	3	5	6	21	55	7	1	
Theft by opening lockfast places (OLP)	124	213	3	7	6	8	22	52	2	-	
Theft from a motor vehicle (by OLP)	127	210	1	2	7	16	29	43	2	-	
Theft of a motor vehicle	173	180	2	3	10	12	30	43	1	-	
Shoplifting	1,285	132	7	10	19	10	29	25	*	-	
Fraud	199	261	1	3	24	6	16	41	9	1	
Drugs	1,167	641	3	3	5	4	9	40	26	11	
Common assault	1,938	209	2	6	12	11	26	40	4	*	
Breach of the peace	1,349	142	5	11	20	11	25	26	1	-	
Unlawful use of a motor vehicle	547	196	3	3	5	6	27	55	*	-	
<b>Women</b>											
Serious assault and attempted murder	101	506	1	5	3	9	16	44	16	7	
Robbery	22	467	5	-	-	9	5	64	18	-	
Housebreaking	22	258	5	-	-	18	9	68	-	-	
Theft by opening lockfast places (OLP)	15	160	7	7	13	13	20	40	-	-	
Theft from a motor vehicle (by OLP)	-	-	-	-	-	-	-	-	-	-	
Theft of a motor vehicle	1	152	-	-	-	-	100	-	-	-	
Shoplifting	165	138	6	15	10	7	33	28	1	-	
Fraud	40	238	3	10	23	8	8	43	8	-	
Drugs	162	455	-	2	6	3	14	54	20	2	
Common assault	103	173	2	7	19	7	31	31	3	-	
Breach of the peace	75	125	8	17	23	9	16	27	-	-	
Unlawful use of a motor vehicle	15	134	-	-	7	13	60	20	-	-	

Note: Figures exclude life and Section 205 sentences.

**Fine default receptions to penal establishments by age, sex, length of sentence and amount of fine outstanding: 1999-00 to 2008-09** **Table 16**

	1999-00	2000-01	2001-02	2002-03	2003-04	2004-05	2005-06	2006-07	2007-08	2008-09
<b>Total</b>	<b>8,358</b>	<b>7,566</b>	<b>6,991</b>	<b>7,097</b>	<b>6,888</b>	<b>6,098</b>	<b>6,213</b>	<b>5,963</b>	<b>3,610</b>	<b>1,506</b>
Under 21	1,328	1,116	1,109	1,016	825	694	771	698	402	185
21 - 30	4,246	3,742	3,506	3,542	3,407	2,859	2,909	2,731	1,703	707
31 - 40	1,937	1,968	1,666	1,787	1,934	1,722	1,731	1,677	1,000	406
41 - 50	599	560	535	575	548	631	616	705	422	171
Over 50	248	180	175	177	174	192	186	152	83	37
<b>Men</b>	<b>7,765</b>	<b>6,949</b>	<b>6,456</b>	<b>6,496</b>	<b>6,312</b>	<b>5,626</b>	<b>5,734</b>	<b>5,521</b>	<b>3,346</b>	<b>1,408</b>
Under 21	1,256	1,046	1,052	967	774	664	745	654	384	176
21 - 30	3,920	3,425	3,240	3,214	3,120	2,622	2,676	2,533	1,572	664
31 - 40	1,791	1,797	1,500	1,609	1,755	1,576	1,578	1,531	921	376
41 - 50	554	509	501	539	501	581	562	656	393	158
Over 50	244	172	163	167	162	183	173	147	76	34
<b>Women</b>	<b>593</b>	<b>617</b>	<b>535</b>	<b>601</b>	<b>576</b>	<b>472</b>	<b>479</b>	<b>442</b>	<b>264</b>	<b>98</b>
Under 21	72	70	57	49	51	30	26	44	18	9
21 - 30	326	317	266	328	287	237	233	198	131	43
31 - 40	146	171	166	178	179	146	153	146	79	30
41 - 50	45	51	34	36	47	50	54	49	29	13
Over 50	4	8	12	10	12	9	13	5	7	3
<b>Length of sentence</b>										
Less than 7 days	994	941	870	834	739	754	987	913	515	129
7 days	3,795	3,431	3,078	3,045	2,881	2,361	2,373	2,270	1,362	559
8-13 days	1,040	910	883	877	898	889	836	805	470	155
14 days	1,868	1,656	1,571	1,763	1,766	1,520	1,499	1,401	861	404
15-29 days	517	503	467	481	502	487	444	477	334	213
30-59 days	121	109	91	85	87	78	63	90	59	40
Over 60 days	22	12	27	11	14	9	11	7	9	6
Missing sentence	1	4	4	1	1	-	-	-	-	-
Average sentence imposed (days)	11	11	11	11	11	11	11	11	12	12
<b>Fine outstanding</b>										
Less than £50	260	277	217	153	134	125	137	128	73	25
£50 - less than £100	1,313	1,170	983	926	792	665	689	731	438	126
£100 - less than £200	2,692	2,422	2,180	2,238	2,075	1,770	1,889	1,808	1,020	370
£200 - less than £500	3,307	2,950	2,838	2,974	3,059	2,684	2,719	2,551	1,591	660
£500 - less than £1,000	634	588	605	646	690	699	654	628	396	259
£1,000 - less than £2,500	130	121	107	105	107	133	114	109	84	62
£2,500 - less than £5,000	9	4	9	12	8	8	8	5	4	4
£5,000 or more	6	2	6	1	5	2	3	3	2	-
Non-offence	7	32	46	42	18	12	-	-	2	-
Average fine outstanding (£)	251	241	259	261	276	288	277	277	286	339

Note: See Section 5 for details on [fine default](#).

## Breaches of discipline and outcome in penal establishments by sex, age and type:

2008-09

Table 17

	Prison		Young Offenders Institution		All	
	Men	Women	Men	Women	Men	Women
<b>Average daily population</b>	<b>6,617</b>	<b>369</b>	<b>805</b>	<b>44</b>	<b>7,422</b>	<b>413</b>
<b>Breaches of discipline</b>	<b>18,155</b>	<b>1,236</b>	<b>3,709</b>	<b>257</b>	<b>21,864</b>	<b>1,493</b>
Assault	692	76	236	24	928	100
Detention of a person against their will	2	-	-	-	2	-
Denying an officer access to any part of the prison	6	-	1	2	7	2
Fighting	1,012	99	480	17	1,492	116
Intentionally endangering the health or personal safety of others	412	91	151	18	563	109
Intentionally obstructing an officer in the execution of his duty	120	19	37	5	157	24
Escaping or absconding from custody	2	-	-	-	2	-
Failure to return from temporary release or to comply with a condition of such release	51	4	6	-	57	4
Possession of an unauthorised article or quantity of an article	2,455	106	349	17	2,804	123
Sale or delivery of an unauthorised article	52	2	2	1	54	3
Sale or delivery of an article allowed only for prisoners own use	46	4	6	-	52	4
Taking (improperly) any article	78	15	29	3	107	18
Arson	46	5	25	1	71	6
Destroying or damaging property	640	41	299	26	939	67
Unauthorised absence from or presence in any part of the establishment	403	92	45	11	448	103
Being disrespectful to any officer, worker or visitor	182	14	38	3	220	17
Using threatening, abusive, insulting, indecent or obscene words or behaviour	1,432	138	297	43	1,729	181
Intentionally refusing to work or failing to work properly	291	1	57	-	348	1
Disobeying a lawful order	7,583	360	1,170	59	8,753	419
Disobeying a rule or regulation	465	28	191	4	656	32
Inhaling a prohibited or unauthorised substance	28	2	6	-	34	2
Smoking in an area where smoking is not permitted	883	22	105	2	988	24
Consuming, taking, injecting, ingesting or concealing a prohibited substance	120	17	7	-	127	17
Committing an indecent or obscene act	33	-	4	-	37	-
Administering, or allowing to be administered, a controlled drug to himself	1,006	94	143	14	1,149	108
Failing without reasonable excuse to open mouth for a visual examination	8	1	1	-	9	1
Attempting/inciting/assisting to commit/attempt to commit, any of the above	107	5	24	7	131	12
<b>Punishments awarded</b>	<b>26,208</b>	<b>1,657</b>	<b>7,874</b>	<b>328</b>	<b>34,082</b>	<b>1,985</b>
Caution	3,479	217	381	28	3,860	245
Forfeiture of privileges	11,660	797	3,124	169	14,784	966
Stoppage/deduction from earnings or other cash	9,638	588	3,906	115	13,544	703
Confinement to cell	1,197	47	393	16	1,590	63
Forfeiture of other entitlements	234	8	70	-	304	8
<b>Breaches of discipline per head of average prison population</b>	<b>3</b>	<b>3</b>	<b>5</b>	<b>6</b>	<b>3</b>	<b>4</b>

Notes: The categories used above are set out in *Prisons and Young Offenders Institutions (Scotland) Rules 1994* as amended, although some of the categories have been aggregated. It is possible for a breach of discipline to result in more than one punishment, and *vis versa*. In addition 82 cases were remanded for police and 476 cases were dismissed in 2008-09.

**Prison population and rate per 100,000 population by jurisdiction: 2008**

**Table 18**

	Prison population	Rate per 100,000	% change from previous year	Population at
Australia	27,615	129	1	30 June 2008
Austria	7,909	95	-12	1 August 2008
Belgium	10,002	93	*	17 June 2008
Bulgaria	9,408	124	-23	1 January 2009
Canada	38,348	116	9	2007-08 (average)
Czech Republic	19,145	186	-1	11 April 2007
Cyprus	671	84	1	31 August 2008
Denmark	3,448	63	-5	4 September 2008
England & Wales	82,918	152	2	19 December 2008
Estonia	3,656	273	5	1 January 2009
Finland	3,583	67	*	16 May 2009
France	59,655	96	6	1 July 2008
Germany	73,203	89	1	31 August 2008
Greece	12,300	109	11	November 2008
Hungary	14,911	149	-3	2 September 2008
Ireland (Eire)	3,325	77	8	26 October 2007
Italy	55,057	92	24	30 June 2008
Japan	80,523	63	3	31 December 2008
Latvia	6,548	287	-2	1 January 2007
Lithuania	7,866	234	-2	1 January 2008
Luxembourg	744	155	-3	1 September 2007
Malta	387	95	10	2007 (average)
Netherlands	16,416	100	-14	31 August 2008
New Zealand	7,887	185	-6	30 June 2008
Northern Ireland	1,393	78	-3	29 December 2008
Norway	3,276	69	-7	1 August 2008
Poland	84,511	222	-6	30 November 2008
Portugal	10,944	103	-8	15 December 2008
Romania	26,377	123	-11	23 December 2008
Russian Federation	891,738	629	*	1 November 2008
<b>Scotland</b>	<b>7,761</b>	<b>150</b>	<b>8</b>	<b>30 June 2008</b>
Slovakia	8,166	151	-3	31 December 2008
Slovenia	1,317	65	-1	1 September 2008
South Africa	163,676	334	*	30 November 2008
Spain	73,589	160	9	26 December 2008
Sweden	6,853	74	-4	1 October 2008
Switzerland	5,780	76	1	3 September 2008
Turkey	101,100	142	14	1 November 2008
USA	2,310,984	760	1	30 June 2008

Sources: International Centre for Prison Studies at Kings College, Eurostat population figures, HM Prison Service for England and Wales, US Bureau of Justice Statistics.

Note: Comparisons of the prison population in different jurisdictions should be treated with caution due to the different justice systems and recording rules in operation.

## 5. Notes and definitions

### Coverage and data collection

31. Before April 1996, population and reception information was collected from the penal establishments via monthly manual statistical returns. In April 1996, a computerised Prisoner Records System (PRS) was introduced by the Scottish Prison Service to enable on-line recording of information on individual prisoners.

32. In July 2004, an improved computerised information system (PR2) was introduced. Due to the way some information is recorded on the new system, some of the tables published in earlier bulletins cannot be reproduced.

33. In 2008 there were 15 penal establishments in Scotland, with Addiewell opening in December 2008. Castle Huntly and Noranside merged in 2007 to form the Open Estate. In addition, there are nine legalised police cells which could be used to detain prisoners. (These tend to be located in more rural areas and are primarily used to detain prisoners temporarily for court attendance).

34. Of the 15 establishments in Scotland, 14 cater mainly for adult prisoners. There is one dedicated young offenders institution in Polmont and two other young offenders institutions are incorporated within the main prison at Cornton Vale and Perth. Due to the increase in the young offender population, Friarton Hall, a separate building which is part of Perth prison, began to be used to house male young offenders in 2006. Cornton Vale continues to be the only all female establishment in the Scottish Prison Service estate. A small number of persons aged 21 or over are received into young offenders institutions. In addition, prisoners up to the age of 23 may be kept at young offenders institutions.

### Counting conventions

35. Prison receptions provide a useful indication of flows through the prison service but are not equivalent to persons received. If a person enters prison on remand or having been sentenced by one court, this is counted as one reception. Where a person receives a custodial sentence after a period on remand or while serving another custodial sentence, this constitutes a further reception. If several custodial sentences are imposed on the same person by two or more courts in one day, this counts as several receptions.

36. Direct sentenced prison receptions (this excludes fine default receptions) are counted differently from custodial court disposals published in the Scottish Government publication *Criminal Proceedings in Scottish Courts*. Most of this difference can be explained by the fact that when a person is given consecutive custodial sentences for several separate sets of charges from the same court on the same day, this is counted as two custodial sentences in the court statistics, but only one direct sentence reception.

37. The table below illustrates the difference between direct sentence prison receptions and custodial court disposals based on the normal counting conventions, and gives an estimate of the equivalent court-derived 'receptions' using the same counting convention as prison statistics.

### Comparison of direct sentenced prison receptions to court derived 'receptions': Scotland

	2001-02	2002-03	2003-04	2004-05	2005-06	2006-07	2007-08
Custodial court disposals	14,858	15,614	14,785	15,012	15,079	16,714	16,686
Court derived 'receptions'	11,318	12,140	11,391	11,425	11,533	12,948	12,955
Direct sentenced receptions	11,782	12,778	12,204	12,207	12,916	13,970	14,205

Source: Scottish Government Justice Analytical Services courts proceedings database and prisons data.

Notes: Due to a change in recording for 2007-08, courts data exclude cases where the main charge is breach of social work order. Court-derived 'receptions' have been estimated by excluding multiple sets of charges on the same day.

38. Only the main crime or offence is used for persons convicted of more than one criminal act. The main crime or offence is the most serious, assumed to be that for which the longest sentence was imposed. Where sentences are to be served consecutively, the length of the sentence recorded is the sum of the sentences. For concurrent sentences, the period of the longest sentence is given. These sentences represent the period which would be served in the absence of any early release, such as Home Detention Curfew or parole.

#### **Fine default**

39. From 1996-97, fine default information includes a separate category of non-offence (non-offence receptions are contempt of court and breach of a supervised attendance order). These receptions are excluded from any calculation of average fine amount.

40. Receptions for compensation order default are included in the fine default figures as these receptions are not separately identifiable from the recorded data.

#### **Unruly certificates**

41. Children may be remanded in custody on an 'unruly certificate' under Sections 24 and 297 of the Criminal Procedure (Scotland) Act 1975. This is where a child over the age of 14 appears before a court charged with a crime or offence and the court considers that release on bail or detention by a local authority is not appropriate because of the child's unruly character. The child may then be detained in the prison system on the authority of the court. The unruly certificate arrangements apply to children aged over 14 and, normally, under 16, although an upper age limit of 18 applies where a child is under a supervision requirement from a children's hearing.

42. The Scottish Government plans to abolish unruly certificates and a provision to repeal the legislation was included in the Criminal Justice and Licensing Bill introduced to Parliament in March 2009. This is currently being considered at stage 1.

#### **Home Detention Curfew**

43. From July 2006, prisoners became eligible for early release from custody on Home Detention Curfew (HDC). The provisions for HDC are contained in the Management of Offenders etc (Scotland) Act 2005. This allows short term prisoners assessed as presenting a low risk of reoffending, to be released on licence between two weeks and four months early. The maximum period was extended to six months in April 2008, and the scheme extended to certain categories of long-term prisoners. Offenders are subject to electronically monitored restrictions on their movements for up to 12 hours per day for the remainder of their sentence. The primary aim of HDC is to facilitate reintegration of prisoners back into the community prior to final release. However, releasing prisoners early on HDC has also resulted in some degree of reduction in the average daily prison population.

#### **Supervision level**

44. Prior to April 2002, there were five security categories which could be assigned to a prisoner, from category A, the highest security level, to category D the lowest. A category of limited D was also available exclusively for life sentence prisoners who could participate in activities approved by Scottish Ministers for the purposes of suitability to be assigned security category D. In April 2002, a new prisoner supervision system, specifically designed to assist the effective management of prisoners and to enhance public safety, was implemented giving supervision levels of High/Medium/Low.

#### **Community Justice Authorities**

45. The Management of Offenders etc. (Scotland) Act 2005 established new Community Justice Authorities (CJAs) to create a more coherent and flexible system of offender management through improved partnership working between the different agencies involved in the criminal justice system. The CJA structure is shown overleaf.

<b>Tayside</b>	Angus Dundee City Perth and Kinross
<b>South West Scotland</b>	Dumfries and Galloway East Ayrshire North Ayrshire South Ayrshire
<b>Fife and Forth Valley</b>	Clackmannanshire Falkirk Fife Stirling
<b>Glasgow</b>	Glasgow City
<b>Northern</b>	Aberdeen City Aberdeenshire Eilean Siar Highland Moray Orkney Islands Shetland Islands
<b>Lothian and Borders</b>	Edinburgh East Lothian Midlothian Scottish Borders West Lothian
<b>Lanarkshire</b>	North Lanarkshire South Lanarkshire
<b>Northern Strathclyde</b>	Argyll and Bute East Dunbartonshire East Renfrewshire Inverclyde Renfrewshire West Dunbartonshire

### **Classification of crimes/offences**

46. The classification of crimes and offences used by the Scottish Government for criminal statistics contains approximately 350 codes. The detailed offence information contained on the warrants on the Prisoner Records System is mapped to the relevant classification code using the following groupings:

## CRIMES

### NON-SEXUAL CRIMES OF VIOLENCE

#### Homicide

(Also referred to as **Violence**)

Comprises murder and culpable homicide (including the statutory crimes of causing death by dangerous driving or causing death by careless driving while under the influence of drink or drugs).

#### Serious assault and attempted murder

Referred for short in the text as “serious assault”.

#### Robbery

Includes offences involving intent to rob.

#### Other

Includes threats, extortion and cruel and unnatural treatment of children.

### CRIMES OF INDECENCY

(Also referred to as **Indecency**).

#### Rape and attempted rape

#### Indecent assault

#### Lewd & indecent behaviour

Comprises lewd & indecent practices against children, indecent exposure.

#### Other

Includes offences connected with prostitution, incest and sexual intercourse with girls aged under 16.

### CRIMES INVOLVING DISHONESTY

(Also referred to as **Dishonesty**)

#### Housebreaking

Includes business as well as domestic premises.

#### Theft by opening a lockfast place

#### Theft of/from a motor vehicle

#### Shoplifting

Includes theft of pedal cycles.

#### Other theft

Includes statutory fraud, except social security benefit fraud.

#### Fraud

Includes forgery, reset and embezzlement.

#### Other

### FIRE-RAISING, VANDALISM ETC

#### Fire-raising

Includes malicious mischief, vandalism and reckless conduct with firearms.

#### Vandalism

### OTHER CRIMES

#### Crimes against public justice

Includes perjury, contempt of court, bail offences and failing to appear at court.

#### Handling an offensive weapon

Comprises carrying offensive weapons, restriction of offensive weapons legislation. (This crime category was previously included under the non-sexual crimes of violence group.)

#### Drugs

Includes importation, possession and supply of controlled drugs.

#### Other

Includes conspiracy and explosives offences.

## OFFENCES

### MISCELLANEOUS OFFENCES

#### Common assault

Also sometimes termed petty or minor assault

#### Breach of the peace

#### Drunkenness

#### Other

Includes offences against local legislation, Revenue and Excise Acts, Licensing Acts, Wireless Telegraphy Acts / Communication Acts.

### MOTOR VEHICLE OFFENCES

#### Dangerous and careless driving

Prior to 1992 this was known as “reckless and careless driving”.

#### Drink/drug driving

Comprises driving or in charge of motor vehicle while unfit through drink or drugs, blood alcohol content above limit and failing to provide breath, blood or urine specimens.

#### Speeding

Includes the small number of motorway and clearway offences, as these are mostly speeding-related.

#### Unlawful use of vehicle

Comprises driving while disqualified, without a licence, insurance, test certificate, vehicle tax and registration and identification offences.

#### Vehicle defect offences

Comprises construction and use and lighting offences.

#### Other

Includes parking, record of work offences, neglect of traffic directions, failing to stop after accident and mobile phone offences.

## A NATIONAL STATISTICS PUBLICATION FOR SCOTLAND

Official and National Statistics are produced to high professional standards set out in the Code of Practice for Official Statistics at <http://www.statisticsauthority.gov.uk/assessment/code-of-practice/code-of-practice-for-official-statistics.pdf>. Both undergo regular quality assurance reviews to ensure that they meet customer needs and are produced free from any political interference.

Statistics assessed, or subject to assessment, by the UK Statistics Authority carry the National Statistics label, a stamp of assurance that the statistics have been produced and explained to high standards and that they serve the public good.

Further information about Official and National Statistics can be found on the UK Statistics Authority website at [www.statisticsauthority.gov.uk](http://www.statisticsauthority.gov.uk)

## SCOTTISH GOVERNMENT STATISTICIAN GROUP

### Our Aim

To provide relevant and reliable information, analysis and advice that meet the needs of government, business and the people of Scotland.

For more information on the Statistician Group, please see the Scottish Government website at [www.scotland.gov.uk/statistics](http://www.scotland.gov.uk/statistics)

### Correspondence and enquiries

Enquiries on this publication should be addressed to:

Martin McNicoll  
Justice Analytical Services  
Justice and Communities Directorate  
GWR, St Andrews House  
Edinburgh EH1 3DG  
Telephone: 0131 244 8740;  
Fax: 0131 244  
e-mail: [Martin.McNicoll@scotland.gsi.gov.uk](mailto:Martin.McNicoll@scotland.gsi.gov.uk)

General enquiries on Scottish Government statistics can be addressed to:

Office of the Chief Statistician  
Scottish Government  
1N.04, St Andrews House  
Edinburgh EH1 3DG  
Telephone: 0131 244 0442  
e-mail: [statistics.enquiries@scotland.gsi.gov.uk](mailto:statistics.enquiries@scotland.gsi.gov.uk)

Further contact details, e-mail addresses and details of previous and forthcoming publications can be found on the Scottish Government Website at [www.scotland.gov.uk/statistics](http://www.scotland.gov.uk/statistics)

### Complaints and suggestions

If you are not satisfied with our service, please write to the Chief Statistician, Mr Rob Wishart, 1N.04, St Andrews House, Edinburgh, EH1 3DG, Telephone: (0131) 244 0302, e-mail [rob.wishart@scotland.gsi.gov.uk](mailto:rob.wishart@scotland.gsi.gov.uk). We also welcome any comments or suggestions that would help us to improve our standards of service.

### ScotStat

If you would like to be consulted about new or existing statistical collections or receive notification of forthcoming statistical publications, please register your interest on the Scottish Government ScotStat website at [www.scotland.gov.uk/scotstat](http://www.scotland.gov.uk/scotstat)

ISSN 0264 1178

ISBN 978-7559-7730-7

### Crown Copyright

Brief extracts from the Crown Copyright material in this publication may be reproduced provided the source is fully acknowledged.