

# Statistical Bulletin

Education Series

Edn/B1/2009/2

ISSN 1479-7569

A National Statistics Publication for Scotland

TEACHERS IN SCOTLAND, 2009

27<sup>th</sup> November, 2009



## 1 Introduction

- 1.1 This report contains the latest data on teachers and support staff in publicly funded schools in Scotland, mainly derived from the annual staff census which took place in September 2009.
- 1.2 Information from the census is used to inform policy making, particularly in modelling the teacher workforce to ensure adequate future supply of newly trained teachers, and for monitoring current policies and equality issues.
- 1.3 Following the publication of *Teachers in Scotland 2008* problems were identified with the completeness of the data provided to the Scottish Government by local authorities. **This bulletin therefore contains revised figures for 2007 and 2008.** Data for 2003 to 2006 will also be reviewed in due course and if necessary new figures will be published.
- 1.4 Unless clearly stated as headcount, figures are always **full-time equivalent**.

## 2 Totals

- 2.1 The **total number of teachers** based in pre-school, primary, secondary and special schools, or visiting specialists, was 52,993, which is 1,348 fewer than the revised 2008 figure of 54,341.
- 2.2 The pupil teacher ratio in schools increased from 12.9 in 2008 to 13.2 this year.
- 2.3 There were a further 22,144 school based staff and 3,257 centrally employed support staff identified in the staff census as providing **support** to the education system.

### 3 Main Points

- 3.1 The following numbers will be partly affected by local authorities changing whether they record visiting specialists as centrally employed or in the schools where they teach.
- 3.2 There were 23,255 teachers in **primary** schools (23,621 in 2008), giving a pupil teacher ratio of 15.8 (15.7 in 2008). Ninety-two per cent of teachers were female, the same as in 2008.
- 3.3 There were 25,371 teachers in **secondary** schools (26,067 in 2008), giving a pupil teacher ratio of 11.9 (11.7 in 2008). Sixty-one per cent of teachers were female, an increase from 2008 (60 per cent).
- 3.4 There were 1,985 teachers in **special** schools (2,083 in 2008), giving a pupil teacher ratio of 3.4 (3.2 in 2008). Eighty-one per cent of teachers were female, the same as in 2008.
- 3.5 There were a further 745 teachers reported as **centrally employed** (933 in 2008). Some of this change is due to changes in reporting practices.
- 3.6 There were 1,638 teachers in pre-school in the January 2009 census.
- 3.7 The average (mean) **age** of primary, secondary and special school teachers fell slightly, from 43.1 to 43.0. There was an increase in the proportion of teachers aged under 40 (39 per cent compared to 38 per cent in 2008) and in those aged 55 or over (21 per cent compared to 20 per cent in 2008). The age profile shows a major peak at age 55, and increasing numbers in the late twenties.
- 3.8 The proportion of teachers who were **male** was 24 per cent. In promoted posts the proportion who were male was 33 per cent, with the figure being 27 per cent for head teachers and deputies.
- 3.9 In primary schools there were 166 teachers whose main **subject** was physical education, 102 whose main subject was music and 70 whose main subject was art & design. There were 569 who reported learning support as their main subject, and 315 gave additional support needs related subjects.
- 3.10 In secondary schools, the largest numbers of teachers were in English (2,915) and maths (2,718). Technical education was the **subject** with the highest proportion of male teachers (85 per cent), with home economics being nearly all female teachers. Physical education, music and drama teachers had the youngest average age, with additional support needs teachers being on average the oldest.
- 3.11 Where ethnic background data was given (in 97 per cent of cases), 2.5 per cent of teachers were from non-UK, white backgrounds, and 1.5 per cent from other **minority ethnic groups**. In promoted posts the proportion was 1.0 per cent and 0.6 per cent respectively, though the minority ethnic group teachers have not, on average, been in the workforce for as long as white-UK teachers.
- 3.12 There were 111 teachers currently teaching **Gaelic** language (up from 107 in 2008), 256 providing Gaelic medium education (242 in 2008), and 415 teachers who reported being able to teach through the medium of Gaelic (404 in 2008).
- 3.13 There were 3,044 teachers in the probation **induction scheme** (3,167 in 2008), of which 1,865 were in primary schools and 1,179 were in secondary schools.

## Contents

Table	Page
<b>Scotland</b>	
<i>Summary</i>	
1.1 Schools, pupils and teachers by school sector, 2007-2009	10
1.2 Teacher numbers by gender, all sectors, 2007-2009	10
1.3 Teachers (headcount) by mode of working, 2007-2009	10
1.4 Average age of teachers by sector, 2007-2009	10
1.5 Numbers of teachers in schools, 2009	10
 <i>Primary</i>	
2.1 Primary school teachers by gender, 2007-2009	12
2.2 ..... age and gender, 2009	12
2.3 ..... age and grade, 2007-2009	13
2.4 ..... grade, mode of working and gender, 2009	13
2.5 ..... status and gender, 2009	13
2.6 ..... employment type and gender, 2009	13
2.7 ..... ethnicity and grade, 2009	14
2.8 ..... main subject taught, 2007-2009	14
2.9 ..... ability to teach through Gaelic medium and age, 2009	15
2.10 ..... with Roman Catholic approval, by age, 2009	15
2.11 Continuing professional development, by grade and gender, 2009	15
2.12 Supply teachers by age and gender, 2009	15
2.13 Teachers by class contact time, grade and mode of working, 2009	16
2.14 Teachers not currently in school, by gender 2009	16
2.15 Primary School Support Staff, 2009	16
 <i>Secondary</i>	
3.1 Teachers by gender, and pupil teacher ratios, 2007-2009	17
3.2 ..... age and gender, 2009	17
3.3 ..... age and grade, 2007-2009	17
3.4 ..... grade, mode of working and gender, 2009	18
3.5 ..... status and gender, 2009	18
3.6 ..... employment type and gender, 2009	18
3.7 ..... ethnicity and grade, 2009	19
3.8 Continuing professional development, by grade and gender, 2009	19
3.9 Teachers by main subject taught, gender, 2007-2009	20
3.10 ..... main subject taught and age, 2009	21
3.11 ..... main subject taught, Gaelic ability and use, 2009	22
3.12 ..... ability to teach through Gaelic and age, 2009	22
3.13 Teachers with Roman Catholic approval, by age, 2009	22
3.14 Supply teachers by main subject taught and gender, 2009	23
3.15 Secondary school teachers by age and subject taught	24
3.16 Teachers by class contact time, grade and mode of working, 2009	25
3.17 Teachers not currently in school, by gender, 2009	25
3.18 Secondary School Support Staff, 2009	25

Table	Page
<b>Scotland</b>	
<i>Special</i>	
4.1 Teachers by gender, and pupil teacher ratios, 2007-2009	26
4.2 ..... age and gender, 2009	26
4.3 ..... age and grade, 2007-2009	27
4.4 ..... grade, mode of working and gender, 2009	27
4.5 ..... status and gender, 2009	27
4.6 ..... employment type and gender, 2009	27
4.7 ..... ethnicity and grade, 2009	28
4.8 ..... main subject taught, 2007-2009	28
4.9 Continuing professional development, by grade and gender, 2009	29
4.10 Teachers with Roman Catholic approval, by age, 2009	29
4.11 Supply teachers by age and gender, 2009	29
4.12 Teachers by class contact time, grade and mode of working, 2009	30
4.13 Teachers not currently in school, 2009	30
4.14 Special School Support Staff, 2009	30
 <i>Centrally Employed</i>	
5.1 Centrally employed teachers, by age and gender, 2009	31
5.2 Centrally employed teachers by main subject taught, 2009	31
5.3 Other centrally employed staff, 2007-2009	32
 <b>Local Authority</b>	
<i>All sectors</i>	
6.1 Teachers in publicly funded schools and pre-schools, 2007-2009	33
6.2 Pupil teacher ratios in publicly funded schools, 2007-2009	34
6.3 Teachers in all sectors by age, 2009	35
 <i>Primary</i>	
7.1 Teachers in publicly funded primary schools, 2007-2009	36
7.2 Pupil teacher ratios in publicly funded primary schools, 2007-2009	37
7.3 Primary school teachers by age, 2009	38
7.4 Average age of primary school teachers, 2007-2009	39
7.5 Primary school teachers by grade, 2009	40
7.6 ..... mode of working and gender (headcount), 2009	41
7.7 ..... employment type, 2009	42
7.8 ..... ethnicity, 2009	43
7.9 ..... main subject taught, 2009	44
7.10 ..... ability to teach through and use of Gaelic, 2009	45
7.11 Primary school support Staff, 2009	46
 <i>Secondary</i>	
8.1 Teachers in publicly funded secondary schools, 2007-2009	47
8.2 Pupil teacher ratios in publicly funded secondary schools, 2007-2009	48
8.3 Teachers by age, 2009	49
8.4 Average age of secondary school teachers, 2007-2009	50
8.5 Secondary school teachers by grade, 2009	51
8.6 ..... mode of working and gender (headcount), 2009	52
8.7 ..... employment type, 2009	53
8.8 ..... ethnicity, 2009	54

Table	Page
<b>Local authority</b>	
<i>Secondary</i>	
8.9 ..... main subject taught, 2009	55
8.10 ..... ability to teach through and use of Gaelic, 2009	58
8.11 Secondary school support Staff, 2009	59
<i>Special</i>	
9.1 Teachers in publicly funded special schools, 2007-2009	60
9.2 Pupil teacher ratios in publicly funded special schools, 2007-2009	61
9.3 Average age of special school teachers, 2007-2009	62
9.4 Special school teachers by grade, 2009	63
9.5 ..... gender and mode of working (headcount), 2009	64
9.6 ..... employment type, 2009	65
9.7 ..... ethnicity, 2009	66
9.8 ..... main subject, 2009	67
9.9 Special school support Staff, 2009	69
<i>Centrally employed staff</i>	
10.1 Numbers of centrally employed staff, 2009-2009	70
10.2 Centrally employed teachers, by subject, 2009	71
10.3 Centrally employed support staff, 2009	72
<i>Pre-school</i>	
11.1 Teachers in publicly funded pre- schools, 2007-2009	73
 <i>Charts</i>	
1 Age profile, all sectors, (headcount), 2007-2009	11
2 Percentage of male teachers, by age (headcount), 2007-2009	11
3 Teachers from minority ethnic backgrounds and of unknown ethnic origin, 2007-2009	11
4 Primary school teachers, age profile (headcount), 2007-2009	12
5 Primary school teachers by national identity, 2009	14
6 Secondary school teachers, age profile (headcount), 2007-2009	17
7 Secondary school teachers by national identity, 2009	19
8 Special school teachers, age profile, (headcount) 2007-2009	26
9 Special school teachers by national identity, 2009	28
10 Changes in the school based workforce since 2008	72
Map 1 Overall pupil teacher ratio, September 2009	74
Index	75

## **BACKGROUND NOTES**

1. The information in this publication for 2009 is derived from the 21<sup>st</sup> September 2009 staff census of all publicly funded primary, secondary and special schools. Information about centrally employed staff was also collected from local authorities.
2. Information relating to pre-school teachers was collected from providers as part of the pre-school census in January 2009.
3. This is the seventh full annual staff census. Comparison of figures from these full censuses with data prior to 2003 may therefore be affected by the change in collection method.

### **Coverage**

4. The staff census covers all publicly funded schools in Scotland (local authority and grant-aided). Where a school has more than one department, for example a secondary school with a primary department, these are counted as separate schools. The census of independent schools is published separately will be available from the Scottish Government website.  
<http://www.scotland.gov.uk/schoolstats>
5. Results of the pupil census, also taken on 21<sup>st</sup> September 2009, were published in "Pupils in Scotland, 2009", which is available on the Scottish Government website at <http://www.scotland.gov.uk/stats/bulletins/00777>
6. Results of the pre-school and childcare census, taken during the week starting on 19<sup>th</sup> January 2009, were published in "Pre-School and Childcare Statistics 2009", which is available on the Scottish Government website at <http://www.scotland.gov.uk/Publications/2009/09/22154942/0>

### **Census consultation**

7. The content of the Teacher Census is considered in consultation with local authorities. The Scottish Government operates in the light of National Statistics guidelines, which restrict data collection to only the information that is required, at a level which is fit for purpose, whilst always trying to minimise the burden on data providers. Recommendations for changes to the census are made through the Scottish Exchange of Educational Data (ScotXed) network.

### **Collection methods**

8. The information required to complete the September 2009 staff census was collected electronically, through local authorities, from all publicly funded primary, secondary and special schools, as part of the ScotXed programme. The information is generally that stored on schools' management information systems, thus reducing the burden on schools.
9. ScotXed supports and promotes effective and secure data exchanges so that key partners in school education in Scotland can benefit from access to information to monitor and improve education services. Partners include: Local authorities, schools, the Scottish Qualifications Authority, HM Inspectorate of Education, Learning and Teaching Scotland and Scottish Government Education Analytical Services Directorate. Further information, including specifications of the data exchanges, can be found at [www.scotxed.net](http://www.scotxed.net).

## Definitions and Data quality

10. Tables in this publication cover **publicly funded schools only**, i.e. local authority and grant-aided schools.
11. Unless clearly stated as **headcount**, figures are always **full-time equivalents**. Where a teacher works in more than one school, this is counted as one person in the headcount.
12. Figures for 2007 and 2008 censuses have been **revised** and therefore differ from those published at the time. While the exact number of teachers reported is always likely to be affected by a handful of missing data, it was identified that a considerable number of teachers, particularly probationer teachers, were missing from returns. Additional steps have now been added to the quality assurance process to ensure that this problem does not recur. It is likely that revised data for 2003 to 2006 will be published in due course.
13. Figures in this publication are reported on a different basis to those in the quarterly **Public Sector Employment in Scotland** publication. In particular, figures here do not count both those who are on sick leave, parental leave or some secondments *and* their replacement, but try to show the number of teachers working at a given time. The methodology in Public Sector Employment in Scotland is therefore more useful for considering payroll implications.
14. Figures for the **special school** sector are compiled from special schools only, and do not include teachers of special classes in mainstream schools. There may be inconsistency between schools and between local authorities in the reporting of special schools and special classes, as well as changes between years. We therefore advise caution when comparing results with previous years and across local authorities.

A few authorities do not have special schools, and may fund places in neighbouring authorities for their pupils. Special schools data include those where there were no pupils based, but which received pupils based in other schools.
15. At September 2009 there was one **grant-aided** mainstream school, with primary and secondary departments, and seven grant-aided special schools. These schools are included in national totals, but are identified separately in the local authority level tables.
16. While 1,090 teachers in the census reported being **chartered teachers**, data from the General Teaching Council showed that by September 2009 904 teachers had gained chartered teacher status. It is therefore assumed that the other teachers had only embarked on the course, or were being paid on the chartered teacher pay scale. All chartered teachers have been included in this publication as teacher grade.
17. The Teacher **Induction Scheme**, for newly qualified **probationer** teachers, was introduced in 2002. Probationers on the scheme have 70 per cent of the normal class contact time without this affecting their full time equivalence. In previous years *Teachers in Scotland* has published centrally held administrative data for those figures. However for 2009 data linkage with GTC information has allowed induction scheme teachers to be accurately included and identified in the census.
18. Teachers are asked to supply their main **subject taught**. Where numbers in a given subject are small these have been included with "other".

19. Tables in this publication show **class contact time** (CCT) based on posts and are not grossed up to the full time post. A teacher having a post with FTE of 0.3 and a CCT of 6 hours appears as 0.3 FTE in the category 'up to 10 hours'. In previous publication this teacher would have appeared FTE 0.3 with 20 hours CCT as that is what their equivalent CCT would be if they were working full time.
20. Information on **qualifications** and **GTC registration** is no longer collected as a part of Teacher Census.
21. The **ethnicity** and **national identity** categories were based broadly on those collected in the 2001 population census and were agreed following consultation. In choosing them it was necessary to balance the competing needs of not grouping different peoples together too much, while having large enough groups for valid analysis. Teachers were given the option of not disclosing their ethnicity. About 98 per cent of teachers disclosed their ethnic background. Where "minority ethnic groups" are referred to, this includes all categories of ethnic background other than "white-UK" and "white-other".
22. **Roman Catholic approval** means teachers have been approved as to their religious belief and character by representatives of the Roman Catholic church.
23. **Supply teachers** were separately identified as either covering a vacancy (and hence included in the total) or covering absence (and so not included to avoid double counting). In practice some schools may not have included the shorter term, sick absence cover staff in their returns, so figures for these may be an undercount.
24. There are some differences in the way in which authorities deal with **centrally employed teachers**. In some cases these **visiting specialists** are considered as allocated to the schools where they teach, and have been included, with relevant partial FTE, in the school-level data. In other cases they are included in the centrally employed staff table. We are also aware that local authorities have changed procedures for reporting during recent years, so figures are not comparable.

### Disclosive data

25. For certain types of information, numbers less than five are deemed to be disclosive, and hence not published. Where figures have been removed they are replaced by a \*. Other figures in the table may also be removed to stop a disclosive figure from being calculated from the total. However, in some cases where there are a large number of pupils in the *unknown* category or where data is incomplete i.e. ethnic background and disability respectively, there often exists a large enough amount of uncertainty for figures to be published.

### Rounding

26. All percentages and FTEs are rounded separately and breakdowns may consequently not sum to Scotland figures.

### Symbols

27. The following symbols are used:

- . . = not available
- # = not applicable
- = nil or rounds to nil
- \* = disclosive data

## Other data

28. Some further data, such as some schools level data, will be made available on the Scottish Government website at [www.scotland.gov.uk/schoolstats](http://www.scotland.gov.uk/schoolstats).

## General

29. All tables are available on the Scottish Government website at <http://www.scotland.gov.uk/stats/bulletins/00785>
30. **This is a National Statistics publication.** National Statistics are produced to high professional standards set out in the National Statistics Code of Practice. They undergo regular quality assurance reviews to ensure that they meet customer needs. They are produced free from any political interference
31. This report was edited by: Kasia Bejtka, Mal Cooke.

## Enquiries or comments

32. Public enquiries (non-media) about the information contained in this bulletin should be addressed to:

Kasia Bejtka,  
Pupil, Teacher and School Statistics,  
Scottish Government,  
Area 1B-South,  
Victoria Quay,  
Edinburgh, EH6 6QQ.  
Tel - 0131 244 4933

Email - [school.stats@scotland.gsi.gov.uk](mailto:school.stats@scotland.gsi.gov.uk)

33. Media enquiries about the information in this bulletin should be addressed to:  
Lisa McDonald: 0131 244 2960

27<sup>th</sup> November, 2009

ALL SECTORS

Table 1.1: Schools, pupils and teachers by school sector, 2007 - 2009

	2007		2008		2009			
	Teachers	Pupil: Teacher ratio	Teachers	Pupil: Teacher ratio	Schools	Pupils	Teachers	Pupil: Teacher ratio
Total	55,089		54,341				52,993	
Publicly funded schools	53,416	12.9	52,703	12.9	2,692	676,740	51,355	13.2
Total based in schools	52,452	13.2	51,770	13.2	2,692	676,740	50,610	13.4
Primary	23,835	15.7	23,621	15.7	2,128	367,146	23,255	15.8
Secondary	26,573	11.7	26,067	11.7	374	302,921	25,371	11.9
Special	2,044	3.2	2,083	3.2	190	6,673	1,985	3.4
Centrally employed	964		933				745	
Pre-schools <sup>(1)</sup>	1,672		1,638				1,638	

(1) Data from the pre-school census, January 2008 and 2009

Table 1.2: Teacher numbers by gender, all sectors, 2007-2009

	Percentage female	Total excluding pre-school	Pupils	Pupil teacher ratio	Total including pre-school
2007	75.7	53,416	692,215	13.0	55,089
2008	75.8	52,703	681,573	12.9	54,341
2009	76.0	51,355	676,740	13.3	52,993

Local authority figures on pages 33 and 34.

Table 1.3: Number of teachers (headcount) by mode of working, 2007-2009<sup>(1)</sup>

	Full-time	Part-time	Total headcount <sup>(1)</sup>	Percentage part-time
2007	47,065	9,045	55,016	15.5
2008	46,204	9,722	55,926	17.4
Primary	20,019	6,170	26,189	23.6
Secondary	23,171	3,858	27,029	14.3
Special	1,734	494	2,228	22.2
Total	44,765	10,369	55,134	18.8

(1) Teachers are counted as full-time if their total FTE across all schools where they teach is greater or equal to one. Excludes centrally employed and pre-school teachers.

Table 1.4: Average age of teachers by sector, 2007-2009

	Primary	Secondary	Special	Total
2007	42.8	43.4	47.5	43.3
2008	42.6	43.3	47.4	43.1
2009	42.4	43.3	46.9	43.0

Excludes centrally employed and pre-school teachers.

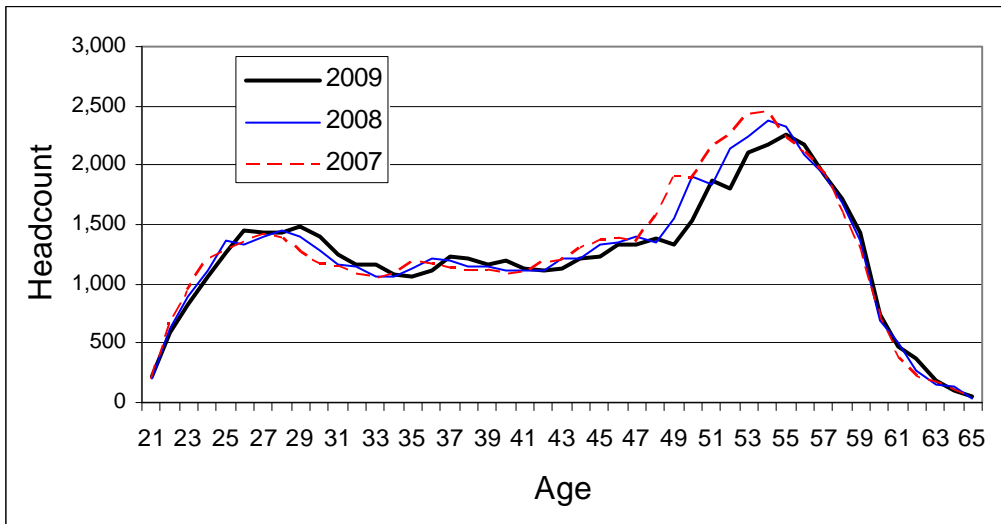
Table 1.5: Numbers of teachers in schools, 2009

	Primary	Secondary	Special <sup>(1)</sup>
Fewer than 5 teachers	516	8	47
5 to 9 teachers	426	7	53
10 to 19 teachers	944	13	67
20 to 39 teachers	241	30	21
40 to 59 teachers	2	76	2
60 to 79 teachers	-	112	-
80 to 99 teachers	-	92	-
100 teachers or more	-	38	-
Average	11	67	10

(1) Includes schools with no permanently based teachers.

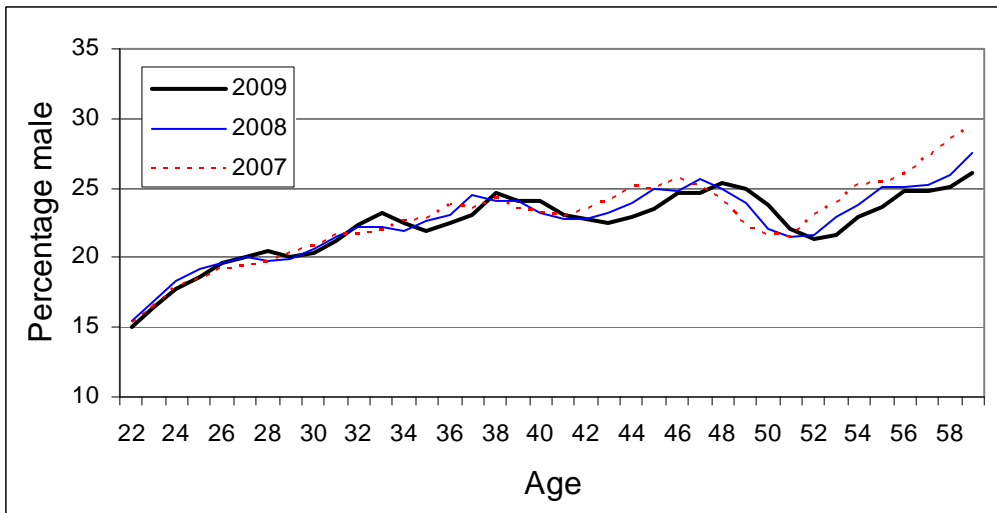
ALL SECTORS

Chart 1: Age profile, all sectors, (headcount), 2007-2009



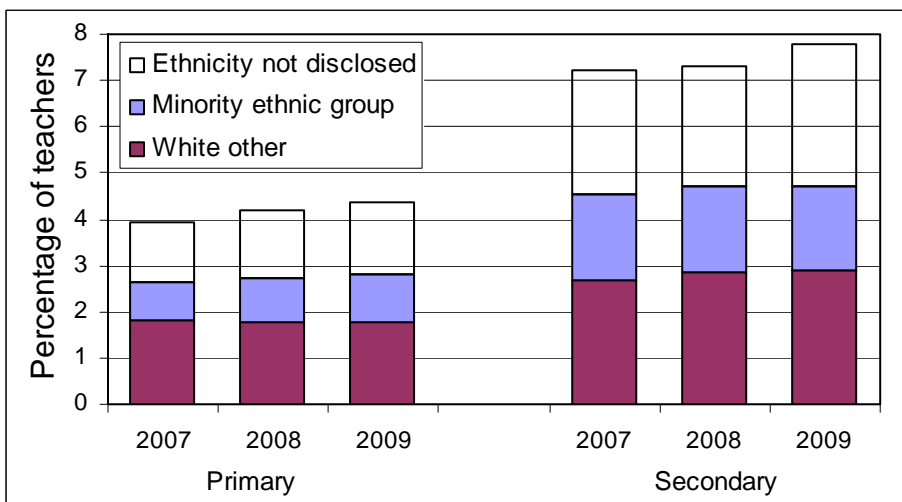
Excludes centrally employed and pre-school teachers.

Chart 2: Percentage of male teachers, by age (headcount), 2007-2009



Excludes centrally employed and pre-school teachers.

Chart 3: Teachers from minority ethnic backgrounds and of unknown ethnic background<sup>(1)</sup>, 2007-2009



Excludes grant-aided schools, centrally employed teachers.

PRIMARY

**Publicly Funded Primary Schools**

Table 2.1: Primary school teachers by gender, 2007-2009

	Female	Male	Percentage female	Total	Pupils	Pupil teacher ratio
2007 <sup>(1)</sup>	21,963	1,834	92	23,835	375,946	15.8
2008 <sup>(1)</sup>	21,701	1,870	92	23,621	370,839	15.7
2009	21,392	1,863	92	23,255	367,146	15.8

(1) Male and female figures from 2007 and 2008 do not add to total. Gender unknown for 38FTE and 50FTE teacher in 2007 and 2008 respectively.

Local authority figures on pages 36 and 37.

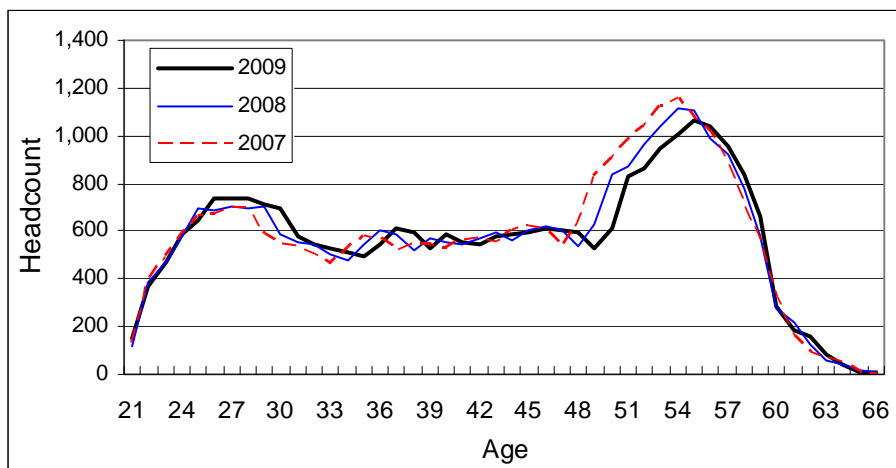
Table 2.2: Primary school teachers by age and gender, 2009<sup>(1)</sup>

	Female	Male	Total
Under 25	1,403	104	1,507
25-29	3,104	274	3,379
30-34	2,251	266	2,516
35-39	2,050	245	2,295
40-44	2,209	212	2,421
45-49	2,324	215	2,539
50-54	3,626	219	3,844
55-59	3,831	269	4,100
60 or over	577	54	632
<b>Average</b>	<b>42.5</b>	<b>41.1</b>	<b>42.4</b>

(1) Excludes teachers in grant aided schools

Local authority figures on page 38 and 39.

Chart 4: Primary school teachers, age profile (headcount), 2007-2009



PRIMARY

Table 2.3: Primary school teachers by age and grade, 2007-2009 <sup>(1)</sup>

	Average age			2009				
	2007	2008	2009	Under 30	30-39	40-49	50-59	60+
Head teacher	51	51	51	5	173	486	1,200	90
Depute head	48	48	48	18	258	367	631	47
Principal teacher	45	45	45	101	523	458	632	51
Teacher	41	41	41	4,761	3,856	3,649	5,482	444
Total	43	43	42	4,886	4,811	4,960	7,945	632

(1) See background note 16. Excludes grant aided schools

Table 2.4: Primary school teachers by grade, mode of working and gender, 2009  
Total

	Female	Male	Total	Percentage female
Head teacher	1,658	297	1,954	85
Depute head teacher	1,186	137	1,323	90
Principal teacher	1,635	131	1,765	93
Teacher	16,914	1,299	18,213	93
Total	21,392	1,863	23,255	92

Full-time

	Female	Male	Total	Percentage female
Head teacher	1,633	290	1,923	85
Depute head teacher	1,124	131	1,255	90
Principal teacher	1,517	127	1,644	92
Teacher	13,993	1,151	15,144	92
Total	18,267	1,699	19,966	91

Part-time

	Female	Male	Total	Percentage female
Head teacher	25	7	31	79
Depute head teacher	62	6	68	91
Principal teacher	118	4	121	97
Teacher	2,921	148	3,069	95
Total	3,125	164	3,289	95

See background note 16.

Local authority figures on page 41.

Table 2.5: Primary school teachers by status and gender, 2009

	Female	Male	Total
Normal Complement	20,174	1,732	21,907
Long term sick replacement	136	19	155
Secondment replacement	124	14	137
Maternity leave replacement	296	27	323
Long term training replacement	5	-	5
Other replacement	95	10	104
Teacher on foreign exchange	5	-	5
Supply covering a vacancy	258	33	291
Supernumerary	17	2	19
Other	282	26	309

Table 2.6: Primary school teachers by employment type and gender, 2009

	Female	Male	Total
Permanent	17,665	1,415	19,080
Temporary <sup>(1)</sup>	3,727	448	4,175

(1) Includes probationer induction scheme. Local authority figures on page 42.

PRIMARY

Table 2.7: Primary school teachers by ethnicity and grade<sup>(1)</sup>, 2009

	Head teacher	Depute head teacher	Principal teacher	Teacher
White - UK	1,913	1,293	1,724	17,292
White - Other	18	18	18	362
Mixed	-	*	*	24
Asian - Indian	*	-	-	15
Asian - Pakistani	-	-	*	23
Asian - Bangladeshi	-	-	-	6
Asian - Chinese	-	-	-	*
Asian - Other	*	-	*	21
Black - Caribbean	*	*	5	76
Black - African	-	-	-	*
Black - Other	-	-	-	5
Other	7	*	*	31
Not Disclosed	12	6	13	330

(1) Excludes grant aided schools

See background note 16.

Local authority figures on pages 40 and 43.

Chart 5: Primary school teachers by national identity, 2009

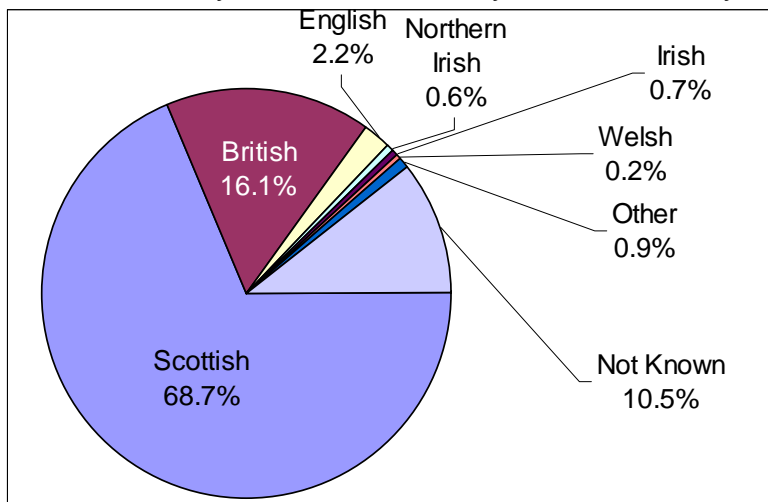


Table 2.8: Primary school teachers by main subject taught, 2007-2009<sup>(1)</sup>

	Main subject			Other subject 2009
	2007	2008	2009	
Primary teaching	20,248	20,154	19,685	413
Learning support	618	578	569	50
Additional support needs general	169	146	141	81
Additional support needs : behavioural support	27	32	32	17
Additional support needs : learning difficulties	103	97	124	-
Additional support needs : physical disabilities	1	3	6	20
Hearing impairment	4	2	7	4
Visual impairment	2	-	5	-
Art & Design	78	80	70	11
Music	112	98	102	7
Physical Education	159	147	166	14
Other / not known	294	282	394	433

(1) Excludes head teachers.

Local authority figures on page 44.

PRIMARY

Table 2.9: Primary school teachers by ability to teach through Gaelic medium and age, 2009

	Able to teach through Gaelic	Currently teaching through Gaelic
Under 25	19	15
25-29	53	39
30-34	34	25
35-39	32	24
40-44	23	12
45-49	31	15
50-54	41	23
55 or over	45	25
Total	278	177

Local authority figures on page 45.

Table 2.10: Primary school teachers with Roman Catholic approval, by age, 2009

	All teachers in Roman Catholic schools	With Roman Catholic approval	
		In Roman Catholic schools	In other schools
Under 25	284	208	15
25-29	592	484	73
30-34	421	367	72
35-39	393	348	89
40-44	423	373	77
45-49	404	352	83
50-54	662	606	122
55-59	721	661	117
60 or over	100	89	17
Total	4,000	3,488	665

Table 2.11: Continuing professional development, by grade and gender, primary schools 2009

	Undertaking chartered teacher programme		Undertaking standard for headship programme		Achieved standard for headship	
	Female	Male	Female	Male	Female	Male
Head teacher	2	-	29	6	448	62
Depute head	2	-	76	18	95	13
Principal teacher	14	-	37	7	16	2
Chartered teacher	526	24	20	3	26	-
Teacher	544	24	162	35	584	76
Total	2	-	29	6	448	62

Table 2.12: Primary school supply teachers in school during census week, by age and gender, 2009

	Female	Male	Total
Under 25	67	5	71
25-29	132	15	147
30-34	47	8	55
35-39	43	6	49
40-44	29	4	34
45-49	27	3	30
50-54	23	4	27
55-59	26	3	29
60 or over	16	2	18
Total	410	50	459

PRIMARY

Table 2.13: Primary school teachers by class contact time, grade and mode of working, 2009

	Head teacher	Depute head	Principal teacher
<i>Full time</i>			
more than 22.5 hours	17	3	16
more than 20 hours, up to 22.5 hours	119	94	755
more than 18 hours, up to 20 hours	35	48	300
more than 10 hours, up to 18 hours	218	261	377
up to 10 hours	1,432	839	189
<i>Part-time</i>			
more than 22.5 hours	1	-	1
more than 20 hours, up to 22.5 hours	3	1	10
more than 18 hours, up to 20 hours	-	1	2
more than 10 hours, up to 18 hours	9	19	72
up to 10 hours	116	54	39

(1) See background notes 16 and 19.

Table 2.14: Primary school teachers not currently in school, by gender, 2009

	Female	Male	Total
Long term absence	103	8	111
Long term training	1	1	2
Secondment to SQA	-	-	-
Secondment to Scottish Government	3	-	3
Secondment to LTScotland	8	-	8
Secondment to LA	108	12	120
Secondment to Other	37	6	43
Maternity/Paternity Leave	293	4	297
Total	553	30	583

Table 2.15: Support staff in primary schools, 2009

	FTE		FTE
Additional support needs auxiliary or care assistant	3,191	Nursery Nurse	988
Admin & clerical	2,771	Office manager	55
Behaviour Support	52	Other APT&C	505
Bursar	6	Other childcare worker (qualified)	107
Business Manager	27	Other childcare worker (unqualified)	278
Classroom assistant	4,294		
		Other instructor	11
Foreign language assistant	2	School nurse or other medical	11
Home-school link worker	13	Sports coach/coordinator	10
Laboratory assistant	-	Swimming pool manager/operator	1
Library staff	4	Technician	19
Music instructor	63		
		Total	12,410

Local authority figures on page 46.

## SECONDARY

### Publicly funded Secondary Schools

Table 3.1: Secondary school teachers by gender, 2007-2009

	Female	Male	Percentage female	Total	Pupils	Pupil teacher ratio
2007 <sup>(1)</sup>	15,891	10,653	60	26,573	309,560	11.6
2008 <sup>(1)</sup>	15,723	10,326	60	26,067	303,978	11.7
2009	15,399	9,972	61	25,371	302,921	11.9

(1) Male and female figures from 2007 and 2008 do not add to total. Gender unknown for 30FTE and 18FTE teacher in 2007 and 2008 respectively.

See background note 11.

Local authority figures on pages 47 and 48.

Table 3.2: Secondary school teachers by age and gender, 2009<sup>(1)</sup>

	Female	Male	Total
Under 25	776	325	1,102
25-29	2,181	1,077	3,259
30-34	1,859	981	2,839
35-39	1,558	1,037	2,595
40-44	1,508	1,016	2,524
45-49	1,931	1,310	3,241
50-54	2,858	1,765	4,623
55-59	2,278	1,939	4,217
60 or over	416	499	916
<b>Average</b>	<b>42.4</b>	<b>44.6</b>	<b>43.3</b>

(1) Excludes teachers in grant aided schools.

Local authority figures on page 49 and 50.

Chart 6: Secondary school teachers, age profile (headcount), 2007-2009

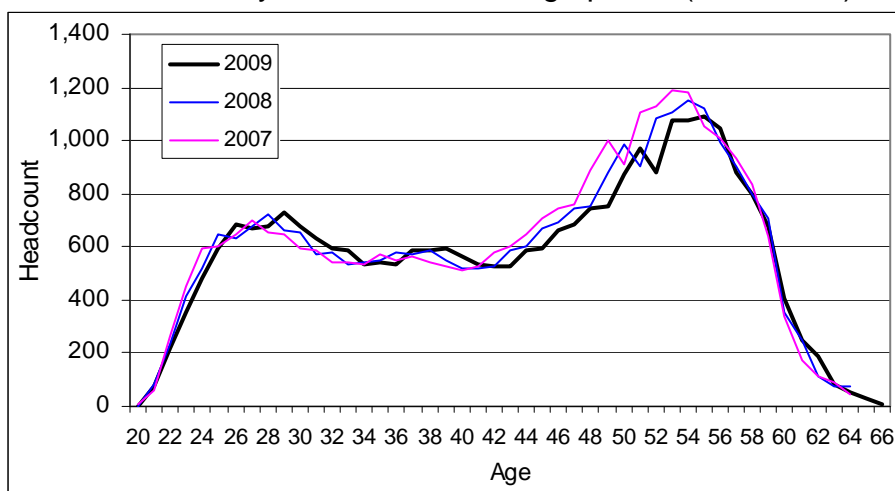


Table 3.3: Secondary school teachers by age and grade, 2007-2009<sup>(1)</sup>

	Average age			2009				
	2007	2008	2009	Under 30	30-39	40-49	50-59	60+
Head teacher	53	53	53	-	9	69	255	27
Depute head	50	50	50	1	152	360	712	58
Principal teacher	47	47	47	226	1,410	1,815	3,156	249
Teacher	41	41	41	4,133	3,865	3,521	4,718	582
<b>Total</b>	<b>43</b>	<b>43</b>	<b>43</b>	<b>4,360</b>	<b>5,435</b>	<b>5,764</b>	<b>8,840</b>	<b>916</b>

(1) Excludes grant aided schools.

See background note 16.

## SECONDARY

Table 3.4: Secondary school teachers by grade, mode of working and gender, 2009

Total				
	Female	Male	Total	Percentage female
Head teacher	105	255	360	29
Depute head teacher	608	678	1,286	47
Principal teacher	3,886	2,989	6,875	57
Teacher	10,800	6,051	16,850	64
<b>Total</b>	<b>15,399</b>	<b>9,972</b>	<b>25,371</b>	<b>61</b>
Full time				
	Female	Male	Total	Percentage female
Head teacher	98	249	347	28
Depute head teacher	600	669	1,269	47
Principal teacher	3,692	2,947	6,639	56
Teacher	9,154	5,700	14,854	62
<b>Total</b>	<b>13,544</b>	<b>9,565</b>	<b>23,109</b>	<b>59</b>
Part-time				
	Female	Male	Total	Percentage female
Head teacher	7	6	13	53
Depute head teacher	8	9	17	49
Principal teacher	194	42	236	82
Teacher	1,646	350	1,996	82
<b>Total</b>	<b>1,855</b>	<b>407</b>	<b>2,262</b>	<b>82</b>

See background note 16.

Local authority figures on page 52.

Table 3.5: Secondary school teachers by status and gender, 2009

	Female	Male	Total
Normal Complement	14,646	9,467	24,114
Long term sick replacement	88	65	153
Secondment replacement	50	45	95
Maternity leave replacement	152	82	234
Other replacement	84	57	141
Teacher on foreign exchange	-	3	3
Supply covering a vacancy	189	158	347
Supernumerary	28	17	46
Other	161	78	239

Table 3.6: Secondary school teachers by employment type and gender, 2009

	Female	Male	Total
Permanent	13,408	8,762	22,169
Temporary <sup>(1)</sup>	1,991	1,211	3,202

(1) Includes probationer induction scheme.

Local authority figures on page 53.

SECONDARY

Table 3.7: Secondary school teachers by ethnicity and grade<sup>(1)</sup>, 2009

	Head teacher	Depute head teacher	Principal teacher	Teacher
White – UK	350	1,237	6,529	15,226
White - Other	*	9	128	597
Mixed	-	*	6	44
Asian - Indian	-	*	*	33
Asian - Pakistani	-	-	9	38
Asian - Bangladeshi	-	*	*	4
Asian - Chinese	-	-	*	18
Asian - Other	-	*	10	46
Black - Caribbean	*	*	5	70
Black - African	-	-	-	32
Black - Other	-	*	*	12
Other	*	*	19	90
Not disclosed/ not known	5	27	143	608

(1) Excludes grant aided schools.

See background note 16.

Local authority figures on pages 51 and 54.

Chart 7: Secondary school teachers by national identity, 2009

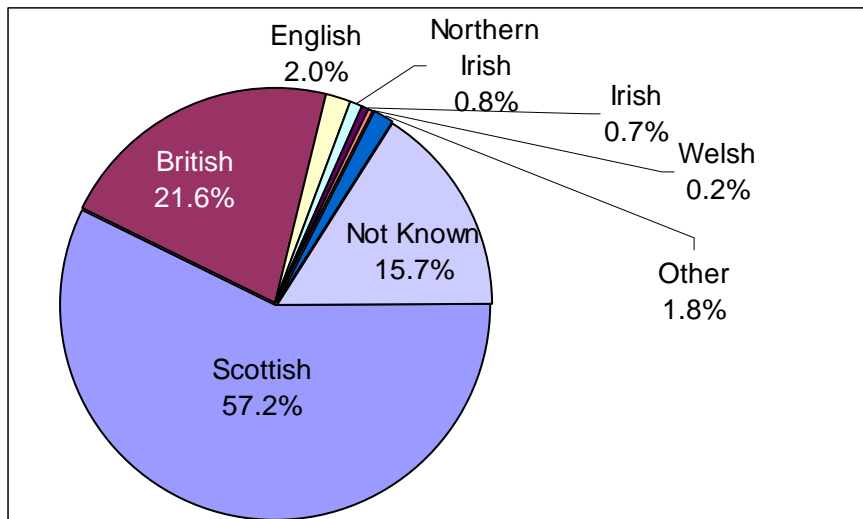


Table 3.8: Continuing professional development, by grade and gender, secondary schools, 2009

	Undertaking chartered teacher programme		Undertaking standard for headship programme		Achieved standard for headship	
	Female	Male	Female	Male	Female	Male
Head teacher	-	-	1	1	60	108
Depute head	-	1	62	72	103	76
Principal teacher	20	4	36	17	11	12
Teacher	445	309	3	1	3	2
Total	464	314	102	91	177	198

SECONDARY

Table 3.9: Secondary school teachers by main subject taught and gender 2007-2009<sup>(1)</sup>

			Main subject taught			Including where the subject is not the main subject		
	2007	2008	2009			Female	Male	Total
	Total	Total	Female	Male	Total			
All subjects	24,895	24,418	14,685	9,040	23,724	20,999	12,521	33,519
English	2,963	2,992	2,080	835	2,915	2,217	876	3,093
French	1,136	1,070	850	154	1,004	1,068	199	1,267
German	189	180	139	37	175	476	104	580
Spanish	66	64	58	8	66	254	47	301
Gaelic	55	57	39	18	57	45	19	64
Italian	11	12	6	3	9	68	12	80
English as Additional Language	40	39	33	10	42	37	11	48
Community Languages	8	8	5	2	7	5	2	7
Other Modern Languages	282	290	237	60	297	256	65	321
Classical Studies	30	27	16	8	24	34	19	53
Mathematics	2,760	2,787	1,477	1,242	2,718	1,570	1,323	2,893
Biology	1,166	1,177	804	373	1,177	920	435	1,354
Chemistry	1,037	989	523	440	963	623	505	1,127
General Science	164	153	78	59	137	1,110	967	2,077
Physics	906	887	235	629	865	269	681	950
Economics	14	11	3	5	8	67	28	94
Geography	852	824	472	318	790	556	368	924
History	860	874	442	410	852	634	520	1,155
Religious Education	684	676	370	306	676	720	493	1,212
Modern Studies	550	560	308	230	538	523	402	925
Media Studies	7	13	2	9	11	51	57	108
Business Studies	992	969	748	189	938	855	233	1,088
Computing Studies	788	766	303	425	728	545	526	1,071
Home Economics	1,001	978	928	17	945	985	21	1,007
Technical Education	1,364	1,345	198	1,133	1,331	213	1,166	1,379
PSE/Guidance	269	300	280	116	396	1,032	494	1,526
Art	1,235	1,192	756	400	1,155	770	426	1,196
Music	892	884	606	275	882	625	283	909
Physical Education	1,731	1,728	862	863	1,725	917	894	1,810
Speech and Drama	347	340	253	79	332	284	96	379
Learning support	961	945	839	174	1,014	956	206	1,162
Additional support needs:								
general	144	151	144	15	159	213	26	240
behavioural support	127	127	88	25	113	122	44	166
learning difficulties	156	167	162	30	192	210	42	253
physical disabilities	11	11	6	1	7	25	4	29
Hearing impairment	25	30	31	4	35	34	4	39
Visual impairment	8	11	10	3	13	13	3	16
Other / not known	1,066	782	294	137	430	1,695	919	2,614

(1) Excludes head teachers and depute head teachers.  
See background note 18.  
Local authority figures on pages 55 to 57.

SECONDARY

Table 3.10: Secondary school teachers by main subject taught<sup>(1)</sup> and age, 2009

	Under 25	25-29	30-34	35-39	40-44	45-49	50-54	55-59	60 or over	Average
All subjects	1,106	3,268	2,812	2,477	2,373	2,974	4,152	3,730	833	43
English	128	518	382	333	285	316	476	378	100	41
French	29	128	120	87	134	105	198	175	28	44
German	6	15	21	21	20	18	34	34	6	44
Spanish	7	*	9	*	9	7	16	13	-	43
Gaelic	*	12	10	5	7	*	6	*	*	40
Italian	-	*	-	*	*	*	*	*	*	48
English as an Additional Language	-	-	-	5	*	*	11	11	6	51
Community Languages	-	-	-	-	*	*	*	*	*	51
Other Modern Languages	*	38	37	45	35	35	50	46	*	42
Classical Studies	*	*	*	*	*	*	8	*	*	48
Mathematics	136	429	290	310	307	413	392	361	80	42
Biology	61	179	182	106	109	116	234	160	31	42
Chemistry	34	121	114	129	100	124	144	164	34	43
General Science	*	8	16	20	16	20	32	15	5	44
Physics	34	93	108	92	118	145	127	114	34	43
Economics	-	-	-	*	-	-	*	*	*	49
Geography	45	135	112	76	47	76	129	141	28	42
History	60	150	110	108	90	68	98	132	34	41
Religious Education	42	87	81	86	68	88	102	92	30	42
Modern Studies	28	109	93	69	39	43	57	82	18	40
Media Studies	-	*	*	*	*	-	-	*	*	40
Business Studies	35	87	98	127	102	164	153	148	25	43
Computing Studies	15	79	65	77	104	126	123	122	17	44
Home Economics	24	70	59	52	103	146	247	205	39	47
Technical Education	66	137	141	111	138	221	251	207	58	44
PSE/Guidance	*	*	56	43	35	57	99	74	10	46
Art	14	121	147	116	140	144	206	214	54	44
Music	81	150	148	108	72	104	125	81	15	39
Physical Education	208	407	233	141	77	129	293	219	19	39
Speech and Drama	16	74	53	26	37	45	49	*	*	39
Learning support	10	30	57	84	80	129	262	282	80	49
Additional support needs:										
general	-	8	11	8	11	22	37	54	9	50
behavioural support	*	*	*	8	11	16	33	26	10	50
learning difficulties	-	10	6	20	17	25	49	48	17	49
physical disabilities	-	*	-	-	*	*	*	*	*	51
Hearing impairment	-	-	*	*	6	*	13	*	*	48
Visual impairment	-	-	*	*	*	*	*	*	*	49
Other / not known	10	42	42	51	43	54	85	71	33	45

(1) Excludes head teachers and depute head teachers.  
 Additional cells may have been replaced by \* for disclosure purposes  
 Local authority figures on pages 49, 50 and 55 to 57.

SECONDARY

Table 3.11: Secondary school teachers by main subject taught and Gaelic ability and use, 2009

	Able to teach through Gaelic	Currently teaching through Gaelic		Able to teach through Gaelic	Currently teaching through Gaelic
All subjects	121	71			
English	9	4	Religious Education	1	-
French	1	-	Computing Studies	2	1
German	1	-	Home Economics	9	3
Gaelic	52	44	Technical Education	4	1
Other Modern Languages	1	-	PSE/Guidance	1	1
Classical Studies	-	-	Art	4	2
Mathematics	11	1	Music	1	1
Biology	3	2	Physical Education	2	2
Chemistry	1	-	Learning support	2	-
General Science	2	2	Additional support needs:		
Physics	3	1	general	-	-
Geography	4	3	Other / not known	1	-
History	5	3			

(1) Excludes head teachers and depute head teachers. Specific registration not necessary for additional support needs subjects, teachers may have registration in another subject and a qualification in additional support needs.

Table 3.12: Secondary school teachers of Gaelic medium and Gaelic language, by age, 2009

	Able to teach through Gaelic	Currently teaching through Gaelic	Teaching Gaelic language <sup>(1)</sup>
Under 30	21	15	15
30-34	17	11	11
35-39	8	7	7
40-44	13	12	13
45-49	27	10	14
50-54	19	8	10
55 or over	31	17	19
Total	137	79	88

(1) As main subject or other subject.  
Local authority figures on page 58.

Table 3.13: Secondary school teachers with Roman Catholic approval, by age, 2009

	All teachers in Roman Catholic schools	With Roman Catholic approval	
		in Roman Catholic schools	in other schools
Under 25	161	77	18
25-29	507	224	81
30-34	475	224	108
35-39	356	210	111
40-44	360	190	113
45-49	503	320	166
50-54	758	514	192
55-59	633	433	126
60 or over	120	80	28
Total	3,873	2,273	943

SECONDARY

Table 3.14: Secondary school supply teachers in school during census week, by main subject taught and gender, 2009

	Female	Male	Total
English	35	29	64
French	16	2	18
German	2	-	2
Spanish	3	1	4
Gaelic	-	1	1
Other Modern Languages	5	3	8
English as an Additional Language	1	-	1
Mathematics	20	31	50
Biology	18	9	27
Chemistry	8	9	17
Science (general)	6	3	9
Physics	5	12	17
Geography	10	13	22
History	8	18	26
Religious Education	5	9	13
Modern Studies	7	6	13
Business Education	14	4	18
Computing	5	11	16
Home Economics	19	-	19
Technical Education	2	24	27
PSE/Guidance	3	2	4
Art & Design	24	6	30
Music	9	10	19
Physical Education	19	24	43
Drama	7	1	8
Learning support	24	8	32
ASN general	6	1	7
ASN behavioural support	2	1	3
ASN learning difficulties	1	1	2
Other	13	7	20

## SECONDARY

Table 3.15: Secondary school teachers by age and subject taught, 2007-2009

	Average age			Percentage aged 55+		
	2007	2008	2009	2007	2008	2009
English	42	42	42	16	17	18
French	44	44	44	19	21	21
German	45	45	45	24	23	27
Spanish	44	44	44	16	18	23
Gaelic	41	40	41	17	16	21
Italian	46	46	48	*	*	*
ESL	51	51	51	34	36	41
Community Lang.	50	50	51	*	*	*
Other Modern Lang.	44	44	43	16	16	18
Classics	49	49	48	42	42	36
Mathematics	42	42	42	16	17	17
Biology	43	43	42	17	18	17
Chemistry	44	44	44	23	22	22
Science (general)	45	45	45	21	21	17
Physics	44	44	43	19	20	19
Economics	50	49	50	36	*	*
Geography	44	43	43	22	24	24
History	43	43	42	23	24	22
Religious Education	43	43	43	15	17	19
Modern Studies	42	41	41	21	22	21
Media Studies	40	40	40	*	*	*
Business Education	44	44	44	16	16	19
Computing	44	44	44	14	16	19
Home Economics	47	48	47	24	24	26
Technical Education	44	44	44	16	18	20
PSE/Guidance	46	46	46	22	20	22
Art & Design	44	44	45	20	21	23
Music	39	39	39	10	11	11
Physical Education	40	40	39	12	12	15
Speech and Drama	51	52	52	40	40	*
Learning support	50	50	49	32	36	36
ASN general	50	50	50	39	37	39
behavioural support	50	50	50	31	33	33
learning difficulties	49	49	49	34	33	33
physical disabilities	50	47	51	*	*	*
Hearing impairment	47	48	49	*	17	22
Visual impairment	49	50	49	*	*	*

## SECONDARY

Table 3.16: Secondary school promoted teachers by class contact time, grade and mode of working, 2009

	Head teacher	Depute head	Principal teacher
<i>Full time</i>			
more than 22.5 hours	3	5	62
more than 20 hours, up to 22.5 hours	20	103	1,894
more than 18 hours, up to 20 hours	2	16	1,411
more than 10 hours, up to 18 hours	5	136	2,802
up to 10 hours	314	1,004	437
<i>part-time</i>			
more than 22.5 hours	-	-	-
more than 20 hours, up to 22.5 hours	-	1	13
more than 18 hours, up to 20 hours	-	1	16
more than 10 hours, up to 18 hours	1	2	137
up to 10 hours	11	12	67

(1) See background notes 16 and 19.

Table 3.17: Secondary school teachers not currently in school, by gender, 2009

	Female	Male	Total
Maternity/Paternity leave	198	3	202
Secondment to LA	41	38	79
Secondment to Other	33	33	66
Long term absence	90	49	139
Long term training	1	-	1
<b>Total</b>	<b>364</b>	<b>124</b>	<b>487</b>

Table 3.18: Support staff in secondary schools, 2009

	FTE		FTE
Additional support needs auxiliary or care assistant	1,847	Nursery Nurse	10
Admin & clerical	1,867	Office manager	108
Behaviour Support	132	Other APT&C	373
Bursar	68	Other childcare worker (qualified)	31
Business Manager	192	Other childcare worker (unqualified)	39
Classroom assistant	818		
		Other instructor	3
Foreign language assistant	71	School nurse or other medical	51
Home-school link worker	113	Sports coach/coordinator	39
Laboratory assistant	104	Swimming pool manager/operator	19
Library staff	340	Technician	1,215
Music instructor	201		
		<b>Total</b>	<b>7,640</b>

Local authority figures on page 59.

SPECIAL

**Publicly funded Special Schools**

Table 4.1: Special school teachers by gender, 2007-2009

	Female	Male	percentage female	Total	pupils	Pupil teacher ratios
2007	1,659	385	81	2,044	6,709	3.3
2008	1,696	387	81	2,083	6,756	3.2
2009	1,602	383	81	1,985	6,673	3.4

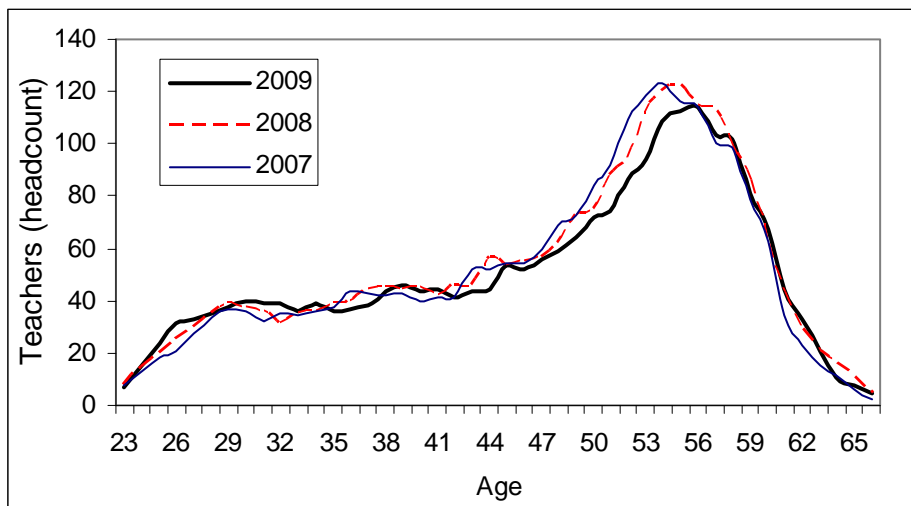
Local authority figures on pages 60 and 61.

Table 4.2: Special school teachers by age and gender, 2009<sup>(1)</sup>

	Female	Male	Total
under 25	15	3	18
25-29	130	16	146
30-34	126	31	157
35-39	142	35	177
40-44	128	54	181
45-49	183	69	252
50-54	297	68	365
55-59	392	71	462
60 or over	101	24	125
Average	47.0	46.8	46.9

(1) Excludes the 7 grant-aided special schools.

Chart 8: Special school teachers, age profile, (headcount) 2007-2009 <sup>(1)</sup>



(1) This graph has been smoothed using a moving average

## SPECIAL

Table 4.3: Special school teachers by age and grade, 2007-2009<sup>(1)</sup>

	Average age			2009				
	2007	2008	2009	Under 30	30-39	40-49	50-59	60+
Head teacher	53	53	53	-	6	20	92	6
Depute head	51	51	50	1	24	28	80	12
Principal teacher	47	47	47	2	51	63	89	10
Teacher	47	47	46	161	253	323	567	97
Total	47	47	47	164	334	433	827	125

(1) Excludes the 7 grant-aided special schools. See background note 16.

Table 4.4: Special school teachers by grade, mode of working and gender, 2009

Total				
	Female	Male	Total	Percentage female
Head teacher	102	28	130	79
Depute head teacher	122	32	154	79
Principal teacher	186	44	230	81
Teacher (incl probationer)	1,193	279	1,471	81
Total	1,602	383	1,985	81
Full-time				
	Female	Male	Total	Percentage female
Head teacher	100	26	126	79
Depute head teacher	121	32	153	79
Principal teacher	177	44	221	80
Teacher (incl probationer)	974	254	1,228	79
Total	1,372	356	1,728	79
Part-time				
	Female	Male	Total	Percentage female
Head teacher	2	2	4	57
Depute head teacher	1	-	1	60
Principal teacher	9	-	9	97
Teacher (incl probationer)	218	25	243	90
Total	230	27	257	90

See background note 16. Local authority figures on pages 63 and 64.

Table 4.5: Special school teachers by status and gender, 2009

	Female	Male	Total
Normal Complement	1,487	349	1,836
Long term sick replacement	16	8	24
Secondment replacement	5	2	7
Maternity leave replacement	14	5	18
Other replacement	10	3	13
Teacher on foreign exchange	-	-	-
Supply covering a vacancy	50	9	60
Supernumerary	1	-	1
Other	19	7	26

Table 4.6: Special school teachers by employment type and gender, 2009

	Female	Male	Total
Permanent	1,390	326	1,715
Temporary	212	57	269

Local authority figures on page 65.

SPECIAL

Table 4.7: Special school teachers by ethnicity and grade, 2009<sup>(1)</sup>

	Head teacher	Depute head teacher	Principal teacher	Teacher
White-UK	120	140	201	1284
White-other	*	*	*	56
Minority ethnic group	*	*	*	44
Not known/ not disclosed	*	*	*	18

(1) Excludes the 7 grant-aided special schools.

See background note 16.

Local authority figures on pages 63 and 66.

Chart 9: Special school teachers by national identity, 2009

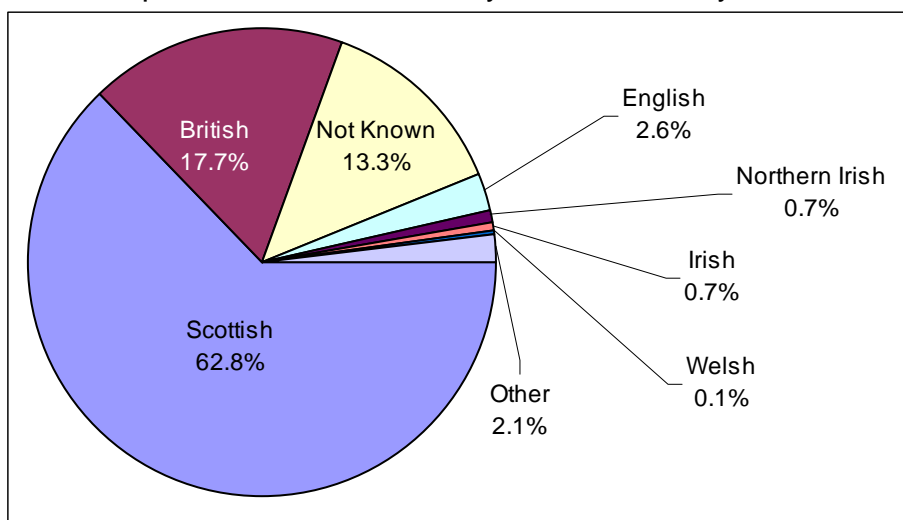


Table 4.8: Special school teachers by main subject taught, 2007-2009<sup>(1)</sup>

	Main subject			Other subject
	2007	2008	2009	2009
Primary teaching	407	426	409	42
Learning support	29	35	33	8
Additional support needs				
Physical Disabilities	16	18	20	23
Behavioural Support	75	71	80	61
Learning Difficulties	274	284	259	49
General	282	289	274	120
Hearing Impairment	19	20	20	4
Visual Impairment	12	10	9	-
Art & design	43	47	41	9
English	87	84	84	42
Maths	73	76	72	44
Music	29	29	30	7
Physical Education	73	74	77	16
Other / not known	386	371	353	275

(1) Excludes the 7 grant-aided special schools. See background note 15.

Local authority figures on page 67.

## SPECIAL

Table 4.9: Continuing professional development, by grade and gender, special schools 2009<sup>(1)</sup>

	Undertaking chartered teacher programme		Undertaking standard for headship programme		Achieved standard for headship	
	Female	Male	Female	Male	Female	Male
Head teacher	-	-	3	-	15	7
Depute head	-	1	6	1	2	2
Principal teacher	-	-	1	-	1	1
Teacher	65	21	-	-	-	-
<b>Total</b>	<b>65</b>	<b>22</b>	<b>10</b>	<b>1</b>	<b>18</b>	<b>10</b>

(1) Excludes the 7 grant-aided special schools.

Table 4.10: Special school teachers with Roman Catholic approval, by age, 2009<sup>(1)</sup>

	All teachers in Roman Catholic schools	With Roman Catholic approval	
		in Roman Catholic schools	in other schools
Under 30	8	6	13
30-34	5	4	23
35-39	5	5	15
40-44	2	1	24
45-49	14	7	28
50-54	17	13	41
55 or over	34	24	76
<b>Total</b>	<b>85</b>	<b>59</b>	<b>220</b>

(1) Excludes the 7 grant-aided special schools.

Table 4.11: Special school supply teachers in school during census week, by age and gender, 2009<sup>(1)</sup>

	Female	Male	Total
Under 30	19	6	24
30-39	11	6	16
40-49	12	-	12
50-59	13	-	13
60 or over	15	1	16

(1) Excludes the 7 grant-aided special schools.

## SPECIAL

Table 4.12: Special school promoted teachers by class contact time, grade and mode of working, 2009

	Head teacher	Depute head	Principal teacher
<i>Full time</i>			
more than 22.5 hours	2	2	4
more than 20 hours, up to 22.5 hours	11	19	98
more than 18 hours, up to 20 hours	-	3	24
more than 10 hours, up to 18 hours	4	35	70
up to 10 hours	101	89	24
<i>part-time</i>			
more than 22.5 hours	-	-	-
more than 20 hours, up to 22.5 hours	-	-	2
more than 18 hours, up to 20 hours	-	-	-
more than 10 hours, up to 18 hours	-	-	5
up to 10 hours	5	1	3

(1) See background notes 16 and 19.

Table 4.13: Special school teachers not currently in school, by gender, 2009<sup>(1)</sup>

	Female	Male	Total
Maternity/Paternity leave	13	-	13
Secondment to LA	6	-	6
Secondment to Other	4	1	5
Long term absence	8	4	12
Other	19	4	22
<b>Total</b>	<b>49</b>	<b>9</b>	<b>58</b>

(1) Excludes the 7 grant-aided special schools.

Table 4.14: Support staff in special schools, 2009<sup>(1)</sup>

	FTE		FTE
Additional support needs	977	Nursery Nurse	160
auxiliary or care assistant	175	Office manager	2
Admin & clerical	17	Other APT&C	111
Behaviour Support	5	Other childcare worker (qualified)	48
Business Manager	-	Other childcare worker (unqualified)	71
Bursar	418	Other instructor	79
Classroom assistant	-	School nurse or other medical	11
Foreign language assistant	3	Sports coach/coordinator	3
Home-school link worker	-	Swimming pool manager/operator	4
Laboratory assistant	2	Technician	5
Library staff	3		
Music instructor	977	<b>Total</b>	<b>2,094</b>

(1) Excludes the 7 grant-aided special schools. Local authority figures on page 69.

## CENTRALLY EMPLOYED

Table 5.1: Centrally employed teachers by age and gender<sup>(1)</sup>, 2009

	Female	Male	Total
Under 25	38	3	41
25-29	132	35	167
30-34	100	22	122
35-39	71	21	92
40-44	102	20	122
45-49	133	25	158
50-54	187	31	218
55-59	210	31	241
60 or over	65	21	86
Average	44.8	44.1	44.7

(1) Includes supply pool teachers.

Table 5.2: Centrally employed teachers by main subject taught<sup>(1)</sup>, 2009

	Visiting specialist <sup>(2)</sup>	Hospital or home visiting tutor	Total	Supply pool
All subjects	689	56	745	502
Primary	124	20	144	301
English	5	6	11	22
French	2	-	2	7
German	-	-	-	-
Spanish	-	-	-	1
Gaelic	-	-	-	-
English as an Additional Language	91	-	91	1
Other Modern Languages	-	-	-	1
Mathematics	4	4	7	16
Biology	-	-	-	7
Chemistry	1	-	1	7
General Science	-	-	-	2
Physics	-	-	-	6
Economics	-	-	-	-
Geography	1	-	1	2
History	-	1	1	8
Religious Education	2	-	2	6
Modern Studies	-	1	1	6
Media Studies	-	-	-	-
Business Studies	3	-	3	4
Computing Studies	7	-	7	8
Home Economics	1	-	1	5
Technical Education	-	-	-	6
Art	29	-	29	9
Music	47	-	47	8
Physical Education	44	-	44	10
Speech and Drama	12	-	12	2
Learning support	162	5	167	12
Additional support needs general	23	2	25	2
Behavioural support	24	1	25	2
Learning difficulties	14	1	15	5
Hearing impairment	39	-	39	1
Visual impairment	19	-	19	-
Other / not known	35	15	50	37

Local authority figures on pages 69 and 70.

## CENTRALLY EMPLOYED

Table 5.3: Other centrally employed staff, 2007-2009

	2007	2008	2009
Education centre	213	204	296
Outdoor centre	62	72	81
Educational Psychologist	416	413	418
Education Welfare officer	78	69	52
Quality Improvement Officer	528	498	555
Supply teacher pool	493	496	502
Peripatetic: Music Instructor	744	711	592
Other	427	472	762

Local authority figures on page 71.

LOCAL AUTHORITY ALL SECTORS

Table 6.1: Teachers in publicly funded schools and pre-schools, 2007-2009<sup>(1)</sup>

	2007	2008	2009
Aberdeen City	1,927	1,785	1,778
Aberdeenshire	2,659	2,775	2,714
Angus	1,222	1,213	1,202
Argyll & Bute	950	930	929
Clackmannanshire	537	550	531
Dumfries & Galloway	1,640	1,660	1,637
Dundee City	1,571	1,563	1,524
East Ayrshire	1,319	1,277	1,289
East Dunbartonshire	1,297	1,269	1,205
East Lothian	1,017	993	1,027
East Renfrewshire	1,291	1,239	1,235
Edinburgh City	3,499	3,475	3,361
Eilean Siar	409	398	403
Falkirk	1,634	1,630	1,592
Fife	3,644	3,653	3,629
Glasgow City	5,638	5,479	5,099
Highland	2,650	2,640	2,567
Inverclyde	918	869	835
Midlothian	950	926	892
Moray	1,001	984	963
North Ayrshire	1,490	1,477	1,380
North Lanarkshire	3,870	3,791	3,727
Orkney Islands	273	281	276
Perth & Kinross	1,372	1,370	1,394
Renfrewshire	1,853	1,751	1,643
Scottish Borders	1,230	1,197	1,170
Shetland Islands	409	418	416
South Ayrshire	1,175	1,134	1,110
South Lanarkshire	3,388	3,382	3,306
Stirling	980	945	976
West Dunbartonshire	1,072	1,040	988
West Lothian	2,021	2,067	2,018
All local authorities	54,904	54,160	52,815
Grant aided	184	181	178

(1) Includes centrally employed teachers. Number of pre-school teachers from January 2009 is used for calculation of the total for 2008 and 2009.

National figures on page 10.

LOCAL AUTHORITY ALL SECTORS

Table 6.2: Pupil teacher ratios in publicly funded schools, 2007-2009<sup>(1)</sup>

Excludes pre-schools.

	2007	2008	2009
Aberdeen City	12.3	13.0	12.8
Aberdeenshire	13.7	12.8	13.1
Angus	13.3	13.2	13.3
Argyll & Bute	12.8	12.8	12.5
Clackmannanshire	13.3	12.7	13.1
Dumfries & Galloway	12.7	12.3	12.4
Dundee City	11.7	11.5	11.7
East Ayrshire	13.2	13.5	13.2
East Dunbartonshire	13.1	13.1	13.6
East Lothian	13.8	14.0	13.5
East Renfrewshire	13.0	13.5	13.6
Edinburgh City	13.5	13.5	13.9
Eilean Siar	9.4	9.4	9.2
Falkirk	13.0	12.9	13.2
Fife	13.8	13.7	13.6
Glasgow City	12.3	12.4	13.2
Highland	12.5	12.3	12.6
Inverclyde	12.3	12.7	13.1
Midlothian	13.1	13.1	13.7
Moray	13.2	12.9	13.0
North Ayrshire	13.4	13.2	14.0
North Lanarkshire	13.0	13.1	13.4
Orkney Islands	11.1	10.4	10.5
Perth & Kinross	13.6	13.5	13.1
Renfrewshire	13.5	14.1	14.8
Scottish Borders	13.0	13.1	13.4
Shetland Islands	8.7	8.5	8.5
South Ayrshire	13.3	13.6	13.7
South Lanarkshire	13.4	13.2	13.5
Stirling	13.3	13.6	13.1
West Dunbartonshire	12.2	12.4	12.8
West Lothian	13.3	13.0	13.3
All local authorities	13.0	13.0	13.2
Grant aided	7.4	7.4	7.5

(1) Includes centrally employed teachers.  
National figures on page 10.

LOCAL AUTHORITY ALL SECTORS

Table 6.3: Teachers in all sectors by age<sup>(1)</sup>, 2009

	under 25	25-29	30-34	35-39	40-44	45-49	50-54	55 or over	Average
Aberdeen City	86	236	190	186	158	179	301	346	43
Aberdeenshire	173	316	232	250	279	325	500	561	43
Angus	68	161	114	110	120	140	203	255	43
Argyll & Bute	26	109	74	74	108	142	172	215	45
Clackmannanshire	33	96	64	55	62	49	87	89	41
Dumfries & Galloway	82	195	144	151	156	239	280	351	44
Dundee City	51	195	161	155	153	170	253	347	44
East Ayrshire	99	163	145	117	112	128	227	256	42
East Dunbartonshire	53	169	141	125	127	176	218	240	43
East Lothian	53	161	124	125	111	96	139	176	41
East Renfrewshire	75	206	158	151	102	108	194	203	41
Edinburgh, City of	137	477	415	345	308	361	477	731	43
Eilean Siar	12	40	41	38	33	69	70	98	45
Falkirk	98	314	182	135	141	173	224	291	41
Fife	175	478	405	387	380	446	608	628	42
Glasgow City	191	608	494	457	535	607	971	1,211	44
Highland	102	240	217	234	295	347	457	624	45
Inverclyde	31	67	90	60	84	98	181	206	45
Midlothian	48	133	120	80	80	84	132	185	42
Moray	34	98	85	84	93	114	217	226	45
North Ayrshire	63	164	137	139	130	177	261	289	44
North Lanarkshire	221	596	389	364	353	411	637	675	42
Orkney Islands	10	33	23	19	25	39	47	67	45
Perth & Kinross	56	144	144	153	168	165	218	293	44
Renfrewshire	93	173	188	164	149	185	345	323	43
Scottish Borders	68	121	119	131	139	161	201	227	43
Shetland Islands	25	29	40	46	52	66	71	67	43
South Ayrshire	42	135	117	93	113	126	186	263	44
South Lanarkshire	162	467	363	322	294	407	602	638	43
Stirling	89	153	121	102	101	109	133	163	41
West Dunbartonshire	65	137	105	96	103	99	174	204	43
West Lothian	149	337	292	213	184	196	266	335	40
All local authorities	2,668	6,950	5,635	5,159	5,247	6,190	9,050	10,780	43

(1) Excludes pre-school teachers. Includes supply pool teachers.

LOCAL AUTHORITY PRIMARY

Table 7.1: Teachers in publicly funded primary schools, 2007-2009<sup>(1)</sup>

	2007	2008	2009		
			Female	Male	Total
Aberdeen City	822	761	707	59	765
Aberdeenshire	1,173	1,255	1,145	90	1,236
Angus	558	559	508	40	548
Argyll & Bute	438	421	400	32	431
Clackmannanshire	236	243	216	18	234
Dumfries & Galloway	644	681	595	63	659
Dundee City	691	673	611	65	676
East Ayrshire	546	546	536	37	573
East Dunbartonshire	484	477	438	30	468
East Lothian	445	445	430	31	461
East Renfrewshire	539	515	470	33	502
Edinburgh City	1,502	1,458	1,270	140	1,410
Eilean Siar	198	185	172	18	190
Falkirk	716	732	680	57	736
Fife	1,621	1,667	1,544	122	1,666
Glasgow City	2,466	2,384	2,010	184	2,194
Highland	1,139	1,132	1,024	92	1,116
Inverclyde	383	361	335	26	360
Midlothian	399	386	335	35	370
Moray	429	419	383	25	408
North Ayrshire	638	638	552	48	601
North Lanarkshire	1,718	1,668	1,538	113	1,651
Orkney Islands	124	127	101	21	123
Perth & Kinross	574	559	593	63	656
Renfrewshire	793	771	663	58	721
Scottish Borders	516	503	478	49	526
Shetland Islands	193	186	159	20	179
South Ayrshire	527	503	447	39	487
South Lanarkshire	1,511	1,544	1,394	111	1,505
Stirling	409	394	387	29	416
West Dunbartonshire	444	445	382	38	420
West Lothian	934	956	873	72	945
All local authorities	23,809	23,595	21,375	1,859	23,234
Grant aided	26	26	17	4	21

(1) See background note 11.  
National figures on page 12.

LOCAL AUTHORITY PRIMARY

Table 7.2: Pupil teacher ratios in publicly funded primary schools, 2007-2009<sup>(1)</sup>

	2007	2008	2009
Aberdeen City	14.9	15.9	15.5
Aberdeenshire	16.4	15.2	15.4
Angus	15.7	15.6	15.6
Argyll & Bute	14.3	14.5	13.9
Clackmannanshire	16.7	15.9	16.2
Dumfries & Galloway	16.6	15.4	15.8
Dundee City	14.1	14.2	14.0
East Ayrshire	16.6	16.4	15.5
East Dunbartonshire	17.6	17.6	17.6
East Lothian	16.7	16.6	16.0
East Renfrewshire	15.5	16.1	16.4
Edinburgh City	16.5	16.9	17.3
Eilean Siar	9.9	10.3	10.1
Falkirk	16.1	15.6	15.4
Fife	16.5	15.9	15.9
Glasgow City	15.3	15.5	16.7
Highland	15.0	15.0	15.1
Inverclyde	15.1	15.7	15.4
Midlothian	15.9	16.3	17.0
Moray	16.4	16.3	16.0
North Ayrshire	16.4	16.1	16.8
North Lanarkshire	15.7	16.0	16.0
Orkney Islands	11.8	11.1	11.3
Perth & Kinross	17.5	17.7	14.9
Renfrewshire	16.4	16.6	17.4
Scottish Borders	16.2	16.5	15.6
Shetland Islands	9.6	9.8	10.1
South Ayrshire	15.1	15.5	15.8
South Lanarkshire	15.8	15.3	15.6
Stirling	16.2	16.6	15.5
West Dunbartonshire	15.5	15.2	15.8
West Lothian	15.5	15.1	15.2
All local authorities	15.8	15.7	15.8
Grant aided	18.0	17.8	21.6

(1) See background note 11.

(2) Figures for 2007 and 2008 have been updated since previous publication National figures on page 12.

LOCAL AUTHORITY PRIMARY

Table 7.3: Primary school teachers by age, 2009

	Under 25	25-29	30-34	35-39	40-44	45-49	50-54	55 or over	Average
Aberdeen City	58	124	86	76	65	79	141	136	42
Aberdeenshire	126	169	89	104	125	158	219	244	42
Angus	45	87	50	65	57	54	80	110	42
Argyll & Bute	11	49	32	27	47	65	95	104	46
Clackmannanshire	13	44	34	23	28	17	40	35	41
Dumfries & Galloway	55	96	63	63	74	76	98	133	42
Dundee City	30	108	91	70	68	64	94	150	42
East Ayrshire	56	69	52	58	50	54	106	128	43
East Dunbartonshire	26	71	57	49	53	52	67	93	42
East Lothian	39	73	53	53	59	48	62	75	41
East Renfrewshire	35	89	70	66	46	34	80	82	40
Edinburgh, City of	82	223	189	139	130	162	199	286	42
Eilean Siar	5	22	26	23	14	30	33	36	43
Falkirk	59	144	93	61	69	85	94	132	40
Fife	92	236	192	179	175	204	289	299	42
Glasgow City	89	286	208	183	251	252	397	528	44
Highland	55	109	98	106	138	154	185	270	44
Inverclyde	20	30	38	27	41	28	84	92	45
Midlothian	31	57	43	28	43	29	55	84	42
Moray	18	39	34	43	38	43	93	101	45
North Ayrshire	28	76	63	55	64	79	103	133	43
North Lanarkshire	137	333	185	162	157	139	247	292	40
Orkney Islands	4	20	12	12	10	14	20	31	44
Perth & Kinross	21	90	71	78	89	72	93	142	43
Renfrewshire	40	91	77	83	83	69	143	135	43
Scottish Borders	37	65	55	57	58	77	81	96	42
Shetland Islands	17	15	15	26	23	24	25	33	42
South Ayrshire	25	67	48	45	49	43	82	129	44
South Lanarkshire	89	222	164	156	135	158	281	300	43
Stirling	38	55	51	48	44	50	59	72	41
West Dunbartonshire	38	54	43	40	46	37	66	95	42
West Lothian	86	166	133	88	94	88	133	156	40
All local authorities	1,507	3,379	2,516	2,295	2,421	2,539	3,844	4,732	42

National figures on page 12.

LOCAL AUTHORITY PRIMARY

Table 7.4: Average age of primary school teachers, 2007-2009

	Average age			Percentage aged 55+		
	2007	2008	2009	2007	2008	2009
Aberdeen City	42	43	42	19	19	18
Aberdeenshire	44	43	42	19	19	20
Angus	43	42	42	17	19	20
Argyll & Bute	45	46	46	24	25	24
Clackmannanshire	42	41	41	21	19	15
Dumfries & Galloway	44	43	42	19	20	20
Dundee City	43	43	42	21	23	22
East Ayrshire	44	43	43	23	23	22
East Dunbartonshire	43	42	42	21	21	20
East Lothian	42	41	41	17	16	16
East Renfrewshire	40	40	40	13	15	16
Edinburgh, City of	42	42	42	20	20	20
Eilean Siar	43	43	43	21	18	19
Falkirk	41	41	40	15	16	18
Fife	43	42	42	16	16	18
Glasgow City	44	44	44	20	22	24
Highland	45	44	44	22	22	24
Inverclyde	44	45	45	20	25	25
Midlothian	43	43	42	21	21	23
Moray	45	45	45	18	20	25
North Ayrshire	44	44	43	23	23	22
North Lanarkshire	41	40	40	16	17	18
Orkney Islands	44	43	44	23	25	26
Perth & Kinross	43	43	43	20	20	22
Renfrewshire	43	42	43	20	16	19
Scottish Borders	43	42	42	16	17	18
Shetland Islands	43	43	42	14	19	19
South Ayrshire	44	44	44	21	23	26
South Lanarkshire	42	42	43	17	18	20
Stirling	42	42	41	16	16	17
West Dunbartonshire	42	42	42	18	20	23
West Lothian	41	40	40	14	16	16
Scotland	43	43	42	19	19	20

National figures on page 12.

LOCAL AUTHORITY PRIMARY

Table 7.5: Primary school teachers by grade, 2009

	Head teacher	Depute head teacher	Principal teacher	Teacher	Percentage female	
					all staff	heads and deputes
Aberdeen City	46	56	24	640	92	89
Aberdeenshire	141	62	15	1,018	93	87
Angus	51	31	30	436	93	90
Argyll & Bute	78	13	33	306	93	83
Clackmannanshire	19	9	21	186	92	86
Dumfries & Galloway	91	28	14	526	90	78
Dundee City	34	53	7	582	90	83
East Ayrshire	49	24	69	432	93	86
East Dunbartonshire	35	39	25	370	94	86
East Lothian	34	26	39	363	93	90
East Renfrewshire	23	33	51	395	93	89
Edinburgh, City of	85	75	74	1,176	90	82
Eilean Siar	23	9	12	146	91	92
Falkirk	49	38	42	608	92	90
Fife	137	85	88	1,355	93	91
Glasgow City	149	142	250	1,654	92	90
Highland	152	42	61	861	92	81
Inverclyde	22	30	18	291	93	89
Midlothian	30	19	39	282	90	71
Moray	44	23	65	276	94	84
North Ayrshire	51	35	92	423	92	84
North Lanarkshire	123	77	182	1,269	93	91
Orkney Islands	16	3	14	90	83	71
Perth & Kinross	73	39	34	510	90	86
Renfrewshire	46	63	60	552	92	90
Scottish Borders	42	31	73	381	91	82
Shetland Islands	20	9	10	140	89	82
South Ayrshire	42	32	64	349	92	88
South Lanarkshire	118	110	106	1,171	93	90
Stirling	37	27	52	300	93	94
West Dunbartonshire	34	30	39	316	91	91
West Lothian	62	30	62	791	92	85
All local authorities	1,954	1,322	1,765	18,192	92	87
Grant aided	-	1	-	20	80	-

National figures on pages 13.  
See background note 16.

LOCAL AUTHORITY PRIMARY

Table 7.6: Headcount of primary school teachers by gender and mode of working, 2009

	Full time		Part time		Total	
	Female	Male	Female	Male	Female	Male
Aberdeen City	598	55	211	8	809	63
Aberdeenshire	893	61	506	45	1,399	106
Angus	436	35	127	7	563	42
Argyll & Bute	320	27	153	11	473	38
Clackmannanshire	187	16	51	5	238	21
Dumfries & Galloway	495	57	187	12	682	69
Dundee City	549	63	116	3	665	66
East Ayrshire	475	32	114	10	589	42
East Dunbartonshire	367	29	141	2	508	31
East Lothian	365	29	124	4	489	33
East Renfrewshire	401	31	135	3	536	34
Edinburgh, City of	1,038	125	438	28	1,476	153
Eilean Siar	146	10	59	18	205	28
Falkirk	594	54	152	4	746	58
Fife	1,350	117	358	10	1,708	127
Glasgow City	1,800	180	402	10	2,202	190
Highland	835	79	377	29	1,212	108
Inverclyde	300	24	61	4	361	28
Midlothian	274	33	125	5	399	38
Moray	324	24	109	4	433	28
North Ayrshire	471	45	154	5	625	50
North Lanarkshire	1,401	109	265	9	1,666	118
Orkney Islands	68	19	63	3	131	22
Perth & Kinross	492	56	183	12	675	68
Renfrewshire	586	56	140	6	726	62
Scottish Borders	373	46	208	7	581	53
Shetland Islands	119	12	87	17	206	29
South Ayrshire	388	36	112	6	500	42
South Lanarkshire	1,205	108	343	5	1,548	113
Stirling	334	28	98	1	432	29
West Dunbartonshire	349	38	60	-	409	38
West Lothian	764	69	207	7	971	76
All local authorities	18,297	1,703	5,866	300	24,163	2,003
Grant aided	15	4	3	1	18	5

LOCAL AUTHORITY PRIMARY

Table 7.7: Primary school teachers by employment type, 2009

	Permanent	Temporary	Of whom, probationer induction scheme <sup>(1)</sup>
Aberdeen City	664	102	51
Aberdeenshire	908	328	110
Angus	483	65	47
Argyll & Bute	366	65	22
Clackmannanshire	175	60	25
Dumfries & Galloway	535	123	41
Dundee City	598	78	27
East Ayrshire	423	150	58
East Dunbartonshire	345	123	48
East Lothian	356	104	56
East Renfrewshire	414	89	56
Edinburgh, City of	1,124	286	113
Eilean Siar	166	23	8
Falkirk	616	121	75
Fife	1,419	246	122
Glasgow City	1,801	393	139
Highland	957	158	73
Inverclyde	297	63	35
Midlothian	297	74	41
Moray	343	65	34
North Ayrshire	481	120	39
North Lanarkshire	1,343	309	131
Orkney Islands	98	24	9
Perth & Kinross	538	119	40
Renfrewshire	598	123	63
Scottish Borders	446	81	27
Shetland Islands	151	28	14
South Ayrshire	404	83	38
South Lanarkshire	1,282	223	120
Stirling	335	81	50
West Dunbartonshire	335	84	46
West Lothian	763	182	106
All local authorities	19,062	4,172	1,864
Grant aided	18	3	1

(1) See background note 17 National figures on page 13.

LOCAL AUTHORITY PRIMARY

Table 7.8: Primary school teachers by ethnicity, 2009

	White-other			Ethnic minority		Not disclosed	
	White-UK	Number	% <sup>(1)</sup>	Number	% <sup>(1)</sup>	Number	%
Aberdeen City	732	20	3	4	1	10	1
Aberdeenshire	1,209	12	1	7	1	8	1
Angus	458	4	1	14	3	72	13
Argyll & Bute	419	*	*	*	*	-	-
Clackmannanshire	*	*	*	*	*	-	-
Dumfries & Galloway	643	10	2	*	*	*	*
Dundee City	642	14	2	8	1	12	2
East Ayrshire	546	18	3	2	-	7	1
East Dunbartonshire	454	6	1	4	1	4	1
East Lothian	452	8	2	-	-	1	-
East Renfrewshire	483	14	3	5	1	1	-
Edinburgh, City of	1,320	53	4	19	1	18	1
Eilean Siar	185	*	*	*	*	1	-
Falkirk	718	9	1	2	-	7	1
Fife	1,619	28	2	5	-	14	1
Glasgow City	2,006	42	2	122	6	24	1
Highland	1,086	23	2	2	-	5	-
Inverclyde	*	*	*	*	*	2	-
Midlothian	352	9	3	2	-	8	2
Moray	397	5	1	2	-	5	1
North Ayrshire	568	2	-	-	-	31	5
North Lanarkshire	1,624	17	1	8	-	3	-
Orkney Islands	109	1	1	1	1	11	9
Perth & Kinross	611	13	2	1	-	31	5
Renfrewshire	686	9	1	2	-	24	3
Scottish Borders	511	*	*	*	*	1	-
Shetland Islands	173	*	*	*	*	*	*
South Ayrshire	469	10	2	-	-	8	2
South Lanarkshire	1,452	20	1	8	1	25	2
Stirling	400	15	4	-	-	2	-
West Dunbartonshire	404	*	*	*	*	2	-
West Lothian	910	11	1	7	1	17	2
All local authorities	22,222	415	2	235	1	360	2

(1) Percentage of those with known ethnic background.  
National figures on page 14.

LOCAL AUTHORITY PRIMARY

Table 7.9: Primary school teachers by main subject taught, 2009<sup>(1)</sup>

	Primary teaching	Learning support	Additional Support Needs	Art & design	Physical Education	Music	Other/ not known
Aberdeen City	643	26	32	2	7	5	5
Aberdeenshire	924	47	45	14	17	16	32
Angus	447	27	9	3	7	4	-
Argyll & Bute	327	5	6	-	5	1	9
Clackmannanshire	197	2	1	2	9	2	2
Dumfries & Galloway	558	4	3	-	-	-	2
Dundee City	534	51	25	6	6	6	12
East Ayrshire	492	1	30	-	-	1	-
East Dunbartonshire	422	-	-	1	5	3	3
East Lothian	398	16	9	1	1	-	2
East Renfrewshire	466	8	1	-	3	-	2
Edinburgh, City of	1,228	52	3	2	14	5	22
Eilean Siar	139	8	2	4	5	4	5
Falkirk	608	20	25	5	14	7	10
Fife	1,444	55	24	-	1	1	4
Glasgow City	1,960	5	1	-	1	1	77
Highland	861	50	7	8	17	11	10
Inverclyde	328	6	1	-	-	-	3
Midlothian	322	13	3	-	2	-	-
Moray	325	22	16	-	-	-	1
North Ayrshire	512	24	8	1	3	-	2
North Lanarkshire	1,457	26	14	-	1	-	31
Orkney Islands	88	6	1	3	4	4	1
Perth & Kinross	499	16	4	5	15	8	37
Renfrewshire	667	1	1	-	1	1	5
Scottish Borders	427	21	8	1	11	6	10
Shetland Islands	113	11	13	4	6	6	6
South Ayrshire	418	16	1	-	5	3	3
South Lanarkshire	1,277	8	16	1	1	1	83
Stirling	366	2	2	1	-	-	8
West Dunbartonshire	383	1	-	-	-	-	1
West Lothian	833	20	5	4	8	5	8
All local authorities	19,664	569	315	70	166	101	394
Grant aided	21	-	-	-	-	-	-

(1) Excludes head teachers..  
National figures on page 14.

LOCAL AUTHORITY PRIMARY

Table 7.10: Primary school teachers by ability to teach through Gaelic, 2009

	Able to teach through Gaelic	Currently teaching through Gaelic
Aberdeen City	5	4
Aberdeenshire	2	-
Angus	2	2
Argyll & Bute	28	15
Clackmannanshire	1	-
Dumfries & Galloway	-	-
Dundee City	1	-
East Ayrshire	4	4
East Dunbartonshire	6	4
East Lothian	-	-
East Renfrewshire	-	-
Edinburgh, City of	12	8
Eilean Siar	91	46
Falkirk	3	-
Fife	1	-
Glasgow City	23	17
Highland	68	57
Inverclyde	2	2
Midlothian	-	-
Moray	-	-
North Ayrshire	-	-
North Lanarkshire	12	8
Orkney Islands	-	-
Perth & Kinross	2	1
Renfrewshire	1	-
Scottish Borders	-	-
Shetland Islands	-	-
South Ayrshire	-	-
South Lanarkshire	6	5
Stirling	6	6
West Dunbartonshire	2	1
West Lothian	1	-
All local authorities	278	177
Grant aided	-	-

National figures on page 15.

LOCAL AUTHORITY PRIMARY

Table 7.11: Support staff in primary schools<sup>(1)</sup>, 2009.

	ASN auxiliary or care assistant	Classroom assistant	Foreign language assistant	Other classroom staff	Other non- classroom staff
Aberdeen City	138	198	-	81	132
Aberdeenshire	286	176	-	99	246
Angus	56	83	-	31	54
Argyll & Bute	75	53	-	12	86
Clackmannanshire	35	39	-	12	61
Dumfries & Galloway	115	83	-	56	116
Dundee City	59	66	-	47	256
East Ayrshire	22	125	-	1	74
East Dunbartonshire	106	133	-	4	81
East Lothian	43	39	-	59	67
East Renfrewshire	51	71	1	14	86
Edinburgh, City of	60	333	1	160	201
Eilean Siar	53	20	-	9	42
Falkirk	54	269	-	-	52
Fife	300	151	-	73	261
Glasgow City	315	440	-	4	343
Highland	258	143	-	51	267
Inverclyde	76	64	-	17	54
Midlothian	37	82	-	23	48
Moray	128	99	-	28	75
North Ayrshire	4	236	-	20	98
North Lanarkshire	245	322	-	22	283
Orkney Islands	2	22	-	23	33
Perth & Kinross	158	83	-	54	86
Renfrewshire	63	155	-	8	131
Scottish Borders	82	49	-	6	74
Shetland Islands	49	18	-	10	29
South Ayrshire	60	79	-	9	76
South Lanarkshire	123	197	-	17	200
Stirling	52	69	-	48	55
West Dunbartonshire	4	190	-	1	69
West Lothian	81	208	-	73	115
All local authorities	3,191	4,294	2	1,072	3,850

(1) See online spreadsheet version for full detail  
National figures on page 16.

LOCAL AUTHORITY SECONDARY

Table 8.1: Teachers in publicly funded secondary schools, 2007-2009<sup>(1)</sup>

	2007	2008	2009		
			Female	Male	Total
Aberdeen City	898	807	515	277	792
Aberdeenshire	1,316	1,326	862	452	1,313
Angus	608	606	371	237	609
Argyll & Bute	483	480	267	211	478
Clackmannanshire	248	251	158	86	245
Dumfries & Galloway	845	839	441	353	794
Dundee City	805	811	472	293	765
East Ayrshire	683	632	380	234	613
East Dunbartonshire	677	664	387	230	617
East Lothian	503	478	293	193	486
East Renfrewshire	679	649	402	256	658
Edinburgh City	1,572	1,577	901	627	1,528
Eilean Siar	207	208	115	91	206
Falkirk	794	783	486	264	750
Fife	1,745	1,737	1,025	684	1,708
Glasgow City	2,422	2,353	1,311	903	2,215
Highland	1,314	1,331	782	560	1,342
Inverclyde	458	436	238	172	410
Midlothian	469	467	267	178	445
Moray	508	507	307	192	499
North Ayrshire	750	732	419	259	678
North Lanarkshire	1,848	1,810	1,075	687	1,762
Orkney Islands	137	137	84	52	136
Perth & Kinross	633	645	386	265	650
Renfrewshire	941	859	499	308	807
Scottish Borders	604	579	342	243	585
Shetland Islands	196	205	117	93	209
South Ayrshire	575	558	330	219	548
South Lanarkshire	1,620	1,596	948	638	1,586
Stirling	508	490	327	173	500
West Dunbartonshire	540	512	301	176	477
West Lothian	927	946	561	344	905
All local authorities	26,515	26,012	15,366	9,949	25,315
Grant aided	57	54	32	23	56

(1) See background note 11.  
National figures on page 17.

LOCAL AUTHORITY SECONDARY

Table 8.2: Pupil teacher ratios in publicly funded secondary schools, 2007-2009<sup>(1)</sup>

	2007	2008	2009
Aberdeen City	11.0	11.8	11.9
Aberdeenshire	11.8	11.3	11.4
Angus	11.6	11.4	11.3
Argyll & Bute	11.8	11.6	11.6
Clackmannanshire	12.1	11.4	11.7
Dumfries & Galloway	11.4	11.2	11.9
Dundee City	10.0	9.7	10.3
East Ayrshire	11.3	11.8	12.2
East Dunbartonshire	11.6	11.5	12.4
East Lothian	11.7	12.1	11.9
East Renfrewshire	11.5	12.1	12.0
Edinburgh City	12.4	12.2	12.6
Eilean Siar	9.0	8.7	8.8
Falkirk	11.4	11.5	12.0
Fife	12.5	12.4	12.6
Glasgow City	11.5	11.7	12.4
Highland	11.4	11.1	11.0
Inverclyde	11.2	11.4	12.2
Midlothian	11.6	11.4	11.9
Moray	11.7	11.3	11.5
North Ayrshire	11.7	11.7	12.7
North Lanarkshire	11.7	11.8	12.1
Orkney Islands	10.7	10.1	10.2
Perth & Kinross	12.4	12.1	12.0
Renfrewshire	11.9	12.8	13.6
Scottish Borders	11.6	11.8	11.7
Shetland Islands	8.1	7.6	7.4
South Ayrshire	12.1	12.3	12.5
South Lanarkshire	12.2	12.1	12.2
Stirling	11.8	12.2	12.0
West Dunbartonshire	11.1	11.4	12.2
West Lothian	12.0	11.7	12.3
All local authorities	11.7	11.7	12.0
Grant aided	10.2	10.6	10.4

(1) See background note 12.  
National figures on page 17.

LOCAL AUTHORITY SECONDARY

Table 8.3: Secondary school teachers by age, 2009

	Under 25	25-29	30-34	35-39	40-44	45-49	50-54	55 or over	Average
Aberdeen City	25	100	94	102	84	86	130	171	43
Aberdeenshire	44	140	137	141	144	160	260	287	44
Angus	23	74	65	45	61	86	121	134	44
Argyll & Bute	15	59	41	46	59	75	74	108	44
Clackmannanshire	18	45	21	27	24	28	38	43	41
Dumfries & Galloway	27	94	75	81	76	145	140	156	44
Dundee City	21	85	69	83	82	102	147	177	45
East Ayrshire	42	84	88	53	56	63	118	110	42
East Dunbartonshire	21	66	69	63	62	101	125	112	44
East Lothian	12	82	69	68	49	45	73	87	42
East Renfrewshire	39	110	83	79	55	71	111	110	41
Edinburgh, City of	46	217	189	181	147	160	231	358	43
Eilean Siar	7	18	15	15	18	38	36	60	46
Falkirk	38	167	86	73	66	72	117	132	41
Fife	84	236	206	199	187	218	286	293	42
Glasgow City	91	252	222	207	220	273	468	482	44
Highland	46	130	117	126	151	178	257	337	45
Inverclyde	11	32	49	29	37	65	90	97	45
Midlothian	17	72	71	48	35	51	69	82	42
Moray	15	60	50	38	48	63	112	113	45
North Ayrshire	31	83	66	76	60	89	141	131	43
North Lanarkshire	82	243	187	175	170	236	345	324	43
Orkney Islands	6	14	11	7	15	24	26	35	45
Perth & Kinross	35	54	70	72	76	92	114	137	44
Renfrewshire	51	70	97	72	58	107	182	171	44
Scottish Borders	27	51	60	69	72	77	113	116	44
Shetland Islands	7	13	25	20	29	41	41	34	44
South Ayrshire	17	62	64	47	57	78	96	128	44
South Lanarkshire	67	220	181	149	147	225	292	306	43
Stirling	50	90	62	48	52	52	67	79	40
West Dunbartonshire	27	77	56	51	50	53	85	78	42
West Lothian	60	160	145	109	76	89	118	148	40
All local authorities	1,102	3,259	2,839	2,595	2,524	3,241	4,623	5,133	43

National figures on pages 17 and 21.

LOCAL AUTHORITY SECONDARY

Table 8.4: Average age of secondary school teachers, 2007-2009

	Average age			Percentage aged 55+		
	2007	2008	2009	2007	2008	2009
Aberdeen City	43	43	43	21	21	22
Aberdeenshire	44	44	44	20	22	22
Angus	45	45	44	25	24	22
Argyll & Bute	44	44	44	20	20	23
Clackmannanshire	43	42	41	16	17	18
Dumfries & Galloway	44	44	44	17	19	20
Dundee City	44	45	45	21	23	23
East Ayrshire	42	43	42	16	20	18
East Dunbartonshire	44	44	44	19	19	18
East Lothian	41	41	42	16	17	18
East Renfrewshire	41	41	41	14	15	17
Edinburgh, City of	43	43	43	21	22	23
Eilean Siar	46	46	46	27	28	29
Falkirk	41	41	41	15	15	18
Fife	43	43	42	18	18	17
Glasgow City	44	44	44	20	20	22
Highland	45	45	45	23	23	25
Inverclyde	44	45	45	18	21	24
Midlothian	42	41	42	18	17	19
Moray	46	45	45	23	22	23
North Ayrshire	44	44	43	23	21	19
North Lanarkshire	43	43	43	14	16	18
Orkney Islands	46	45	45	22	22	26
Perth & Kinross	44	44	44	16	19	21
Renfrewshire	45	44	44	21	20	21
Scottish Borders	44	44	44	20	19	20
Shetland Islands	44	44	44	13	16	16
South Ayrshire	45	45	44	26	24	23
South Lanarkshire	43	43	43	13	16	19
Stirling	41	41	40	16	17	16
West Dunbartonshire	41	41	42	13	16	16
West Lothian	41	40	40	16	17	16
Scotland	43	43	43	19	19	20

National figures on pages 17 and 21.

LOCAL AUTHORITY SECONDARY

Table 8.5: Secondary school teachers by grade, 2009

	Head teacher	Depute head teacher	Principal teacher	Teacher	Percentage female	
					All staff	Heads and deputes
Aberdeen City	10	37	232	514	65	51
Aberdeenshire	16	63	327	907	66	42
Angus	8	28	149	423	61	36
Argyll & Bute	9	30	141	296	56	49
Clackmannanshire	3	12	54	176	65	20
Dumfries & Galloway	15	45	175	559	55	33
Dundee City	10	45	241	469	62	44
East Ayrshire	9	31	193	380	62	48
East Dunbartonshire	8	35	176	398	63	40
East Lothian	6	23	137	320	60	45
East Renfrewshire	7	40	148	463	61	38
Edinburgh, City of	23	76	482	948	59	54
Eilean Siar	7	12	42	145	56	37
Falkirk	8	28	97	617	65	46
Fife	19	68	503	1,119	60	34
Glasgow City	32	127	582	1,474	59	48
Highland	29	61	340	913	58	37
Inverclyde	7	27	137	239	58	47
Midlothian	5	22	148	269	60	44
Moray	8	26	178	287	62	38
North Ayrshire	9	29	223	417	62	34
North Lanarkshire	25	106	515	1,116	61	50
Orkney Islands	4	5	41	86	62	46
Perth & Kinross	10	26	211	403	59	47
Renfrewshire	11	49	217	530	62	43
Scottish Borders	8	26	164	386	58	30
Shetland Islands	5	9	48	148	56	39
South Ayrshire	8	29	161	350	60	35
South Lanarkshire	17	97	375	1,097	60	49
Stirling	7	23	97	372	65	50
West Dunbartonshire	5	25	163	284	63	50
West Lothian	11	23	158	713	62	32
All local authorities	359	1,282	6,856	16,818	61	43
Grant aided	1	4	19	32	58	40

See background note 16.

National figures on pages 18 and 19.

LOCAL AUTHORITY SECONDARY

Table 8.6: Headcount of secondary school teachers by gender and mode of working, 2009

	Full time		Part time		Total	
	Female	Male	Female	Male	Female	Male
Aberdeen City	451	260	111	26	562	286
Aberdeenshire	697	433	290	35	987	468
Angus	343	233	47	6	390	239
Argyll & Bute	235	204	64	12	299	216
Clackmannanshire	144	85	25	3	169	88
Dumfries & Galloway	387	336	88	29	475	365
Dundee City	436	283	70	17	506	300
East Ayrshire	333	224	82	17	415	241
East Dunbartonshire	341	222	84	15	425	237
East Lothian	247	182	76	17	323	199
East Renfrewshire	362	251	75	11	437	262
Edinburgh, City of	770	600	216	44	986	644
Eilean Siar	94	76	41	29	135	105
Falkirk	445	256	67	15	512	271
Fife	941	672	143	19	1,084	691
Glasgow City	1,191	875	223	55	1,414	930
Highland	682	535	168	38	850	573
Inverclyde	213	168	44	7	257	175
Midlothian	222	165	75	19	297	184
Moray	263	184	76	14	339	198
North Ayrshire	358	251	107	13	465	264
North Lanarkshire	984	656	170	56	1,154	712
Orkney Islands	67	49	37	9	104	58
Perth & Kinross	326	251	96	21	422	272
Renfrewshire	437	291	114	34	551	325
Scottish Borders	302	234	66	18	368	252
Shetland Islands	90	85	50	18	140	103
South Ayrshire	286	206	80	25	366	231
South Lanarkshire	848	625	172	25	1,020	650
Stirling	304	170	42	5	346	175
West Dunbartonshire	258	172	72	7	330	179
West Lothian	509	332	79	18	588	350
All local authorities	13,566	9,566	3,150	677	16,716	10,243
Grant aided	23	16	19	12	42	28

LOCAL AUTHORITY SECONDARY

Table 8.7: Secondary school teachers by employment type, 2009

	Permanent	Temporary	Of whom, probationer induction scheme <sup>(1)</sup>
Aberdeen City	690	103	27
Aberdeenshire	1,180	133	52
Angus	551	57	33
Argyll & Bute	436	42	10
Clackmannanshire	210	35	16
Dumfries & Galloway	728	66	21
Dundee City	701	64	32
East Ayrshire	489	124	41
East Dunbartonshire	525	91	31
East Lothian	420	66	33
East Renfrewshire	531	127	55
Edinburgh, City of	1,323	205	70
Eilean Siar	183	23	7
Falkirk	678	72	31
Fife	1,530	178	69
Glasgow City	1,800	415	122
Highland	1,232	110	39
Inverclyde	366	44	6
Midlothian	396	49	24
Moray	471	28	13
North Ayrshire	573	105	32
North Lanarkshire	1,529	233	67
Orkney Islands	113	23	6
Perth & Kinross	562	88	28
Renfrewshire	689	118	60
Scottish Borders	520	65	17
Shetland Islands	195	15	6
South Ayrshire	481	67	18
South Lanarkshire	1,381	204	83
Stirling	431	69	44
West Dunbartonshire	418	58	31
West Lothian	786	119	50
All local authorities	22,122	3,193	1,174
Grant aided	47	9	5

(1) See background note 17  
National figures on page 18.

LOCAL AUTHORITY SECONDARY

Table 8.8: Secondary school teachers by ethnicity, 2009

	White - UK	White - other		Ethnic minority		Not disclosed	
		Number	% <sup>(1)</sup>	Number	% <sup>(1)</sup>	Number	%
Aberdeen City	727	22	3	17	2	26	3
Aberdeenshire	1,217	34	3	15	1	48	4
Angus	507	14	2	30	5	58	10
Argyll & Bute	433	15	3	6	1	24	5
Clackmannanshire	234	*	*	*	*	*	*
Dumfries & Galloway	748	23	3	5	1	18	2
Dundee City	684	25	4	11	2	45	6
East Ayrshire	573	24	4	5	1	11	2
East Dunbartonshire	580	16	3	12	2	9	1
East Lothian	463	13	3	8	2	2	1
East Renfrewshire	593	15	2	17	3	33	5
Edinburgh, City of	1,431	51	3	29	2	17	1
Eilean Siar	200	*	*	*	*	-	-
Falkirk	722	13	2	3	-	13	2
Fife	1,552	60	4	13	1	84	5
Glasgow City	1,951	55	3	161	7	47	2
Highland	1,243	58	4	13	1	28	2
Inverclyde	391	10	2	-	-	9	2
Midlothian	387	28	7	7	2	24	5
Moray	468	15	3	3	1	13	3
North Ayrshire	639	12	2	5	1	22	3
North Lanarkshire	1,692	37	2	14	1	20	1
Orkney Islands	122	3	2	-	-	11	8
Perth & Kinross	572	19	3	5	1	55	8
Renfrewshire	750	11	1	15	2	31	4
Scottish Borders	544	25	4	2	-	14	2
Shetland Islands	199	*	*	*	*	*	*
South Ayrshire	512	17	3	4	1	15	3
South Lanarkshire	1,458	35	2	28	2	65	4
Stirling	456	29	6	2	-	13	3
West Dunbartonshire	463	6	1	5	1	3	1
West Lothian	835	33	4	14	2	23	3
All local authorities	23,343	735	3	455	2	783	3

(1) Percentage of those with known ethnic background.  
National figures on page 19.

LOCAL AUTHORITY SECONDARY

Table 8.9: Secondary school teachers by main subject taught, 2009<sup>(1)</sup>

	English	French	German	Spanish	Gaelic	Italian	English as an Additional Language	Community Languages	Other Modern Languages	Classics	Mathematics	Biology
Aberdeen City	84	29	9	2	1	-	-	-	1	-	82	34
Aberdeenshire	128	60	16	2	-	-	1	-	2	-	127	56
Angus	67	25	5	-	-	-	-	-	7	-	61	22
Argyll & Bute	52	22	2	-	8	-	1	-	1	-	49	18
Clackmannanshire	26	9	4	-	-	-	-	-	-	-	25	11
Dumfries & Galloway	92	41	5	-	-	-	-	-	2	-	83	52
Dundee City	75	20	2	3	-	-	1	-	15	2	77	34
East Ayrshire	75	29	2	1	1	-	-	-	10	-	69	24
East Dunbartonshire	75	28	-	2	1	-	-	-	11	-	69	34
East Lothian	50	23	5	-	-	-	-	-	-	2	49	23
East Renfrewshire	85	29	-	2	-	-	1	-	10	-	69	32
Edinburgh, City of	187	72	17	6	1	4	-	-	5	1	158	68
Eilean Siar	25	11	2	-	12	-	-	-	-	1	20	10
Falkirk	80	34	7	1	-	-	-	-	1	2	76	40
Fife	190	53	25	1	-	-	-	-	24	4	179	85
Glasgow City	279	74	3	9	2	4	38	7	46	3	259	89
Highland	142	68	5	3	24	-	-	-	-	1	135	63
Inverclyde	46	14	-	7	-	-	1	-	9	-	45	15
Midlothian	51	16	7	2	-	-	-	-	3	-	47	20
Moray	53	19	6	2	-	-	-	-	4	-	49	20
North Ayrshire	80	29	2	2	-	-	-	-	12	1	77	34
North Lanarkshire	226	45	10	9	3	1	-	-	29	-	216	82
Orkney Islands	15	6	3	-	-	-	-	-	1	-	14	7
Perth & Kinross	68	13	3	2	2	-	-	-	24	1	67	25
Renfrewshire	99	27	4	3	-	1	-	-	15	1	91	42
Scottish Borders	64	25	10	-	-	-	-	-	2	-	56	28
Shetland Islands	18	10	5	-	-	-	-	-	-	-	20	8
South Ayrshire	63	21	2	1	-	-	-	-	5	-	60	31
South Lanarkshire	185	49	4	7	1	-	-	-	42	4	172	70
Stirling	61	29	2	-	1	-	-	-	1	-	54	27
West Dunbartonshire	57	28	5	-	-	-	-	-	3	1	56	22
West Lothian	112	42	5	1	-	-	-	-	12	-	101	45
All local authorities	2,910	999	175	66	57	9	42	7	297	24	2,711	1,173
Grant aided	5	5	-	-	-	-	-	-	-	-	7	4

(1) Excludes head teachers and deputy head teachers.  
National figures on page 21.

LOCAL AUTHORITY SECONDARY

Table 8.9 (cont.): Secondary school teachers by main subject taught, 2008

Chemistry	Science (general)	Physics	Economics	Geography	History	Religious Education	Modern Studies	Media Studies	Business Education	Computing	Home Economics	Technical Education	
27	2	31	-	21	25	25	24	-	28	19	27	33	Aberdeen City
52	3	40	-	41	41	36	28	-	46	31	40	68	Aberdeenshire
21	15	24	1	28	24	11	3	-	19	19	26	33	Angus
18	4	16	-	17	20	10	6	-	18	13	21	25	Argyll & Bute
9	2	7	-	8	10	11	8	-	9	10	11	17	Clackmannanshire
30	2	27	-	28	36	19	16	-	29	19	35	51	Dumfries & Galloway
22	2	21	-	21	26	22	19	1	27	28	28	32	Dundee City
24	3	16	-	16	23	10	12	1	17	19	25	37	East Ayrshire
29	1	24	-	20	19	19	16	-	25	25	22	32	East Dunbartonshire
21	1	18	-	15	16	13	13	-	19	14	17	25	East Lothian
36	3	25	-	19	19	25	11	-	27	24	19	31	East Renfrewshire
48	12	53	-	50	54	42	31	3	54	55	61	69	Edinburgh, City of
6	2	8	-	7	5	3	2	-	7	5	9	11	Eilean Siar
29	2	27	-	23	21	20	12	-	30	21	30	42	Falkirk
68	3	65	-	50	51	37	52	-	67	44	59	82	Fife
77	11	69	-	50	64	60	57	-	100	62	78	106	Glasgow City
55	5	48	3	53	50	27	8	2	39	24	47	85	Highland
14	2	15	-	11	17	12	8	-	19	13	17	26	Inverclyde
19	2	13	-	17	17	15	7	1	12	12	19	27	Midlothian
19	3	19	-	16	15	11	9	-	15	7	18	23	Moray
25	1	27	1	20	23	23	10	-	20	24	25	34	North Ayrshire
62	8	52	1	52	51	49	44	-	60	55	76	100	North Lanarkshire
5	3	4	-	8	4	4	1	-	5	3	5	8	Orkney Islands
23	9	23	-	23	22	16	11	-	22	20	25	40	Perth & Kinross
32	2	27	-	24	26	23	18	-	30	20	29	49	Renfrewshire
21	7	17	-	17	23	14	13	-	20	11	22	28	Scottish Borders
6	5	5	-	8	6	2	5	-	11	5	8	13	Shetland Islands
24	1	19	-	17	13	17	14	-	18	17	26	31	South Ayrshire
64	9	54	2	51	56	37	30	3	65	45	55	76	South Lanarkshire
22	1	20	-	21	25	17	14	-	19	14	13	26	Stirling
19	2	20	-	14	14	14	18	-	18	15	19	23	West Dunbartonshire
33	8	29	-	24	35	32	20	-	41	33	31	47	West Lothian
959	137	862	8	787	850	676	537	11	935	726	943	1,329	All local authorities
4	-	3	-	2	2	-	1	-	3	2	2	2	Grant aided

National figures on page 21.

LOCAL AUTHORITY SECONDARY

Table 8.9 (cont.): Secondary school teachers by main subject taught, 2009

	PSE/Guidance	Art & Design	Music	Physical Education	Drama	Learning Support	ASN general	ASN Behavioural Support	ASN Learning Difficulties	ASN Physical Disabilities	Hearing Impairment	Visual Impairment	Other
Aberdeen City	23	32	27	40	17	35	17	9	9	-	-	-	32
Aberdeenshire	63	54	36	62	27	76	19	15	35	3	1	1	23
Angus	11	25	22	39	5	33	10	3	9	-	-	-	3
Argyll & Bute	6	28	17	32	7	19	2	2	3	-	-	-	4
Clackmannanshire	3	10	8	19	1	4	2	-	4	-	-	-	2
Dumfries & Galloway	4	36	29	61	14	12	3	1	-	-	-	-	6
Dundee City	3	35	28	47	8	67	1	2	4	3	3	-	34
East Ayrshire	2	36	25	45	2	25	3	4	8	-	5	1	2
East Dunbartonshire	8	30	22	38	2	14	-	-	-	-	-	-	7
East Lothian	8	22	16	30	5	22	-	1	7	-	-	-	24
East Renfrewshire	3	25	22	48	16	21	1	2	4	-	-	-	4
Edinburgh, City of	40	69	47	104	32	43	4	10	7	-	-	-	22
Eilean Siar	1	8	6	14	-	8	3	-	-	-	-	-	1
Falkirk	7	29	25	61	10	63	2	5	3	-	-	1	10
Fife	6	99	61	125	42	71	24	15	8	1	-	-	32
Glasgow City	46	92	78	168	44	48	7	1	4	-	3	3	17
Highland	4	60	47	85	9	80	19	1	17	1	4	-	42
Inverclyde	1	18	16	25	2	18	-	2	1	-	3	1	2
Midlothian	11	23	17	31	6	19	-	-	-	-	-	-	4
Moray	12	20	16	28	10	24	8	1	7	-	-	-	30
North Ayrshire	15	33	23	48	2	37	2	7	-	-	-	-	1
North Lanarkshire	16	82	67	129	22	61	1	-	4	-	6	-	14
Orkney Islands	1	5	4	10	2	4	-	-	6	-	-	-	-
Perth & Kinross	33	29	20	49	5	12	8	2	10	-	-	-	9
Renfrewshire	8	42	32	59	3	22	6	2	7	-	-	-	4
Scottish Borders	10	27	20	42	2	33	-	5	4	-	1	-	30
Shetland Islands	6	10	8	13	-	5	2	2	11	-	-	-	4
South Ayrshire	8	26	20	37	-	36	-	3	-	-	-	-	3
South Lanarkshire	16	65	49	98	29	52	6	7	12	-	8	6	45
Stirling	-	19	18	39	-	9	2	3	6	-	-	-	8
West Dunbartonshire	1	23	17	31	1	17	-	6	-	-	-	-	3
West Lothian	21	40	37	65	9	24	7	3	3	-	-	-	12
All local authorities	396	1,153	880	1,722	331	1,013	159	113	192	7	35	13	431
Grant aided	-	3	2	3	1	1	-	-	-	-	-	-	-

National figures on page 21.

LOCAL AUTHORITY SECONDARY

Table 8.10: Secondary school teachers by ability to teach through Gaelic, 2009

	Able to teach through Gaelic	Currently teaching through Gaelic
Aberdeen City	1	1
Aberdeenshire	2	-
Angus	2	-
Argyll & Bute	9	8
Clackmannanshire	1	-
Dumfries & Galloway	-	-
Dundee City	-	-
East Ayrshire	1	1
East Dunbartonshire	2	1
East Lothian	-	-
East Renfrewshire	1	-
Edinburgh, City of	5	2
Eilean Siar	38	18
Falkirk	2	-
Fife	-	-
Glasgow City	16	14
Highland	38	27
Inverclyde	1	-
Midlothian	-	-
Moray	2	-
North Ayrshire	1	-
North Lanarkshire	3	3
Orkney Islands	-	-
Perth & Kinross	2	2
Renfrewshire	-	-
Scottish Borders	3	-
Shetland Islands	-	-
South Ayrshire	-	-
South Lanarkshire	5	1
Stirling	1	1
West Dunbartonshire	-	-
West Lothian	1	-
All local authorities	137	79
Grant aided	-	-

National figures on page 22.

LOCAL AUTHORITY SECONDARY

Table 8.11: Support staff in secondary schools<sup>(1)</sup>, 2009

	ASN auxiliary or care assistant	Classroom assistant	Foreign language assistant	Other classroom staff	Other non- classroom staff
Aberdeen City	70	9	-	5	192
Aberdeenshire	189	2	2	11	246
Angus	51	38	6	7	95
Argyll & Bute	45	40	5	1	94
Clackmannanshire	26	16	-	2	32
Dumfries & Galloway	40	42	-	4	167
Dundee City	51	5	-	30	176
East Ayrshire	22	46	-	1	118
East Dunbartonshire	45	14	-	-	133
East Lothian	39	6	-	11	78
East Renfrewshire	58	8	2	2	117
Edinburgh, City of	109	55	8	81	273
Eilean Siar	24	10	-	3	35
Falkirk	50	63	4	4	117
Fife	145	9	-	1	308
Glasgow City	91	66	11	50	404
Highland	148	-	1	21	225
Inverclyde	43	13	-	1	82
Midlothian	5	34	-	10	41
Moray	68	10	-	6	116
North Ayrshire	1	67	7	2	110
North Lanarkshire	131	56	6	20	315
Orkney Islands	-	15	2	3	24
Perth & Kinross	64	-	-	16	104
Renfrewshire	47	38	-	7	140
Scottish Borders	80	-	-	5	93
Shetland Islands	33	1	-	7	26
South Ayrshire	29	31	-	3	94
South Lanarkshire	64	13	-	11	214
Stirling	11	38	-	-	81
West Dunbartonshire	14	32	16	2	113
West Lothian	31	42	-	31	184
All local authorities	1,824	818	71	357	4,548

(1) See online spreadsheet version for full detail. Excludes grant aided schools.  
National figures on page 25.

LOCAL AUTHORITY SPECIAL

Table 9.1: Teachers in publicly funded special schools, 2007-2009<sup>(1)</sup>

	2007	2008	2009		
			Female	Male	Total
Aberdeen City	92	96	80	17	97
Aberdeenshire	47	46	45	1	46
Angus	-	-	-	-	-
Argyll & Bute	16	17	9	1	10
Clackmannanshire	36	33	22	4	26
Dumfries & Galloway	9	11	3	5	8
Dundee City	33	36	32	4	36
East Ayrshire	44	46	44	3	47
East Dunbartonshire	59	61	50	13	62
East Lothian	-	-	-	-	-
East Renfrewshire	21	20	17	3	20
Edinburgh City	176	196	141	32	173
Eilean Siar	-	-	-	-	-
Falkirk	75	78	54	14	68
Fife	77	75	46	23	69
Glasgow City	527	530	406	102	508
Highland	45	41	37	6	42
Inverclyde	42	43	37	4	41
Midlothian	29	28	26	3	28
Moray	-	-	-	-	-
North Ayrshire	43	44	33	10	43
North Lanarkshire	202	192	137	56	193
Orkney Islands	-	-	-	-	-
Perth & Kinross	21	22	17	6	23
Renfrewshire	80	80	72	7	78
Scottish Borders	8	8	7	1	8
Shetland Islands	-	-	-	-	-
South Ayrshire	24	25	23	2	25
South Lanarkshire	127	134	82	27	109
Stirling	16	16	16	5	21
West Dunbartonshire	35	40	31	7	38
West Lothian	60	64	49	16	65
All local authorities	1,943	1,982	1,513	371	1,884
Grant Aided	101	101	89	12	101

(1) See background note 12.  
National figures on page 26.

LOCAL AUTHORITY SPECIAL

Table 9.2: Pupil teacher ratios in publicly funded special schools, 2007-2009<sup>(1)</sup>

	2007	2008	2009
Aberdeen City	3.1	2.8	3.0
Aberdeenshire	4.9	5.0	4.8
Angus	#	#	#
Argyll & Bute	2.4	2.3	2.7
Clackmannanshire	1.2	1.1	0.7
Dumfries & Galloway	0.7	1.8	1.1
Dundee City	3.4	3.5	3.4
East Ayrshire	4.2	4.0	3.8
East Dunbartonshire	2.8	2.7	2.7
East Lothian	#	#	#
East Renfrewshire	3.1	3.1	3.4
Edinburgh City	4.0	3.7	4.0
Eilean Siar	#	#	#
Falkirk	2.1	2.2	2.8
Fife	1.5	1.6	1.7
Glasgow City	3.2	3.2	3.5
Highland	3.6	3.8	3.3
Inverclyde	3.3	3.3	3.6
Midlothian	3.3	3.4	3.3
Moray	#	#	#
North Ayrshire	4.0	3.8	3.8
North Lanarkshire	3.9	4.1	4.1
Orkney Islands	#	#	#
Perth & Kinross	2.4	2.3	2.3
Renfrewshire	4.0	4.1	4.3
Scottish Borders	-	-	-
Shetland Islands	#	#	#
South Ayrshire	4.0	3.8	3.6
South Lanarkshire	3.7	3.2	2.9
Stirling	1.7	2.3	1.4
West Dunbartonshire	2.7	3.4	3.9
West Lothian	3.1	3.1	3.4
All local authorities	3.3	3.3	3.4
Grant aided	3.2	2.9	2.8

(1) See background note 12.  
National figures on page 26.

LOCAL AUTHORITY SPECIAL

Table 9.3: Average age of special school teachers, 2007-2009

	Average age			Percentage aged 55+		
	2007	2008	2009	2007	2008	2009
Aberdeen City	49	49	47	32	33	31
Aberdeenshire	52	51	50	45	45	42
Angus	#	#	#	#	#	#
Argyll & Bute	52	47	48	*	*	*
Clackmannanshire	47	46	45	28	28	20
Dumfries & Galloway	49	50	52	*	*	*
Dundee City	51	49	51	34	34	45
East Ayrshire	44	45	43	23	24	24
East Dunbartonshire	48	47	47	26	27	29
East Lothian	#	#	#	#	#	#
East Renfrewshire	41	41	43	14	20	30
Edinburgh, City of	48	48	47	35	36	33
Eilean Siar	#	#	#	#	#	#
Falkirk	50	50	49	33	38	37
Fife	49	49	49	29	26	32
Glasgow City	48	48	48	33	34	35
Highland	49	50	50	26	30	29
Inverclyde	46	48	46	25	33	34
Midlothian	48	47	47	42	35	43
Moray	#	#	#	#	#	#
North Ayrshire	48	48	49	19	31	33
North Lanarkshire	47	47	46	24	24	24
Orkney Islands	#	#	#	#	#	#
Perth & Kinross	51	52	52	23	41	47
Renfrewshire	45	45	45	17	17	21
Scottish Borders	47	50	48	*	*	*
Shetland Islands	#	#	#	#	#	#
South Ayrshire	44	43	44	25	23	20
South Lanarkshire	47	47	45	28	28	21
Stirling	48	46	44	*	*	*
West Dunbartonshire	46	46	46	25	32	30
West Lothian	45	44	45	17	21	27
Scotland	47	47	47	29	31	31

National figures on page 26.

LOCAL AUTHORITY SPECIAL

Table 9.4: Special school teachers by grade, 2009

	Head teacher	Depute head teacher	Principal teacher	Teacher	Percentage female	
					All teachers	Heads and deposes
Aberdeen City	6	5	12	74	82	81
Aberdeenshire	4	4	-	38	98	100
Angus	-	-	-	-	-	-
Argyll & Bute	-	1	-	8	94	75
Clackmannanshire	1	2	3	20	85	100
Dumfries & Galloway	2	-	-	6	40	50
Dundee City	1	3	5	27	88	75
East Ayrshire	3	4	6	34	94	71
East Dunbartonshire	2	4	12	44	80	65
East Lothian	-	-	-	-	-	-
East Renfrewshire	1	2	2	15	85	67
Edinburgh, City of	9	12	24	128	81	81
Eilean Siar	-	-	-	-	-	-
Falkirk	5	6	8	49	79	64
Fife	9	3	8	49	66	58
Glasgow City	37	47	53	372	80	82
Highland	5	2	4	32	87	62
Inverclyde	3	3	2	33	90	83
Midlothian	1	2	5	20	91	100
Moray	-	-	-	-	-	-
North Ayrshire	4	5	6	28	77	44
North Lanarkshire	10	17	22	144	71	67
Orkney Islands	-	-	-	-	-	-
Perth & Kinross	1	2	-	20	75	100
Renfrewshire	2	7	7	62	92	100
Scottish Borders	1	-	2	6	83	100
Shetland Islands	-	-	-	-	-	-
South Ayrshire	2	2	3	18	92	100
South Lanarkshire	8	5	13	83	75	86
Stirling	2	1	5	13	76	20
West Dunbartonshire	2	2	4	30	81	100
West Lothian	5	4	9	47	76	100
All local authorities	124	145	214	1,401	81	79
Grant aided	6	9	16	70	89	93

See background note 16.  
National figures on pages 27.

LOCAL AUTHORITY SPECIAL

Table 9.5: Headcount of special school teachers by gender and mode of working, 2009

	Full time		Part time		Total	
	Female	Male	Female	Male	Female	Male
Aberdeen City	65	16	26	3	91	19
Aberdeenshire	34	1	26	-	60	1
Angus	#	#	#	#	#	#
Argyll & Bute	6	-	7	2	13	2
Clackmannanshire	16	4	13	-	29	4
Dumfries & Galloway	2	5	2	-	4	5
Dundee City	30	4	6	1	36	5
East Ayrshire	35	3	20	-	55	3
East Dunbartonshire	41	12	16	2	57	14
East Lothian	#	#	#	#	#	#
East Renfrewshire	17	3	-	-	17	3
Edinburgh, City of	115	29	45	7	160	36
Eilean Siar						
Falkirk	48	14	15	1	63	15
Fife	40	23	10	1	50	24
Glasgow City	362	97	85	12	447	109
Highland	28	5	15	1	43	6
Inverclyde	31	4	10	-	41	4
Midlothian	25	2	1	1	26	3
Moray	#	#	#	#	#	#
North Ayrshire	26	10	13	-	39	10
North Lanarkshire	118	53	35	9	153	62
Orkney Islands	#	#	#	#	#	#
Perth & Kinross	13	5	7	1	20	6
Renfrewshire	63	6	18	1	81	7
Scottish Borders	6	1	2	1	8	2
Shetland Islands	#	#	#	#	#	#
South Ayrshire	23	2	1	-	24	2
South Lanarkshire	71	23	20	6	91	29
Stirling	12	5	6	-	18	5
West Dunbartonshire	27	5	6	3	33	8
West Lothian	45	14	9	5	54	19
All local authorities	1,299	346	414	57	1,713	403
Grant aided	78	11	22	1	100	12

National figures on page 27.

## LOCAL AUTHORITY SPECIAL

Table 9.6: Special school teachers by employment type, 2009

	Permanent	Temporary
Aberdeen City	88	9
Aberdeenshire	40	6
Angus	-	-
Argyll & Bute	7	2
Clackmannanshire	22	4
Dumfries & Galloway	8	-
Dundee City	35	2
East Ayrshire	36	11
East Dunbartonshire	55	7
East Lothian	-	-
East Renfrewshire	15	5
Edinburgh, City of	158	15
Eilean Siar	-	-
Falkirk	61	7
Fife	63	6
Glasgow City	419	89
Highland	38	4
Inverclyde	30	11
Midlothian	27	1
Moray	-	-
North Ayrshire	39	4
North Lanarkshire	155	38
Orkney Islands	-	-
Perth & Kinross	22	1
Renfrewshire	67	11
Scottish Borders	7	2
Shetland Islands	-	-
South Ayrshire	22	3
South Lanarkshire	100	10
Stirling	19	2
West Dunbartonshire	32	6
West Lothian	55	10
All local authorities	1,619	265

National figures on page 27.

LOCAL AUTHORITY SPECIAL

Table 9.7: Special school teachers by ethnicity, 2009

	White-UK	White-other		Ethnic minority		Not disclosed	
		Number	% <sup>(1)</sup>	Number	% <sup>(1)</sup>	Number	%
Aberdeen City	90	*	*	*	*	*	*
Aberdeenshire	*	*	*	-	-	1	1
Angus							
Argyll & Bute	*	*	*	-	-	-	-
Clackmannanshire	*	*	*	-	-	-	-
Dumfries & Galloway	*	*	*	*	*	-	-
Dundee City	36	-	-	-	-	-	-
East Ayrshire	46	-	-	-	-	-	-
East Dunbartonshire	*	*	*	-	-	1	2
East Lothian							
East Renfrewshire	*	-	-	*	*	-	-
Edinburgh, City of	161	7	4	*	*	*	*
Eilean Siar							
Falkirk	*	*	*	*	*	-	-
Fife	*	*	*	*	*	1	1
Glasgow City	441	18	4	34	7	14	3
Highland	*	*	*	-	-	-	-
Inverclyde	41	-	-	-	-	-	-
Midlothian	27	-	-	-	-	1	4
Moray							
North Ayrshire	*	*	*	-	-	-	-
North Lanarkshire	184	*	*	*	*	-	-
Orkney Islands							
Perth & Kinross	21	-	-	-	-	2	7
Renfrewshire	73	*	*	*	*	-	-
Scottish Borders	8	-	-	-	-	-	-
Shetland Islands							
South Ayrshire	*	*	*	-	-	-	-
South Lanarkshire	102	*	*	*	*	-	-
Stirling	21	-	-	-	-	-	-
West Dunbartonshire	*	*	*	-	-	-	-
West Lothian	60	*	*	*	*	1	2
All local authorities	1,744	66	4	49	3	25	1

(1) Percentage of those with known ethnic background.  
National figures on page 28.

LOCAL AUTHORITY SPECIAL

Table 9.8: Special school teachers by main subject taught, 2009<sup>(1)</sup>

	General & ASN	Art & design	English	Maths	Music	Physical Education	Other / not known
Aberdeen City	65	2	4	3	2	3	12
Aberdeenshire	37	-	-	-	-	1	4
Angus	-	-	-	-	-	-	-
Argyll & Bute	9	-	-	-	1	-	-
Clackmannanshire	18	-	4	1	-	-	3
Dumfries & Galloway	1	1	-	1	-	1	3
Dundee City	4	1	1	-	2	2	26
East Ayrshire	42	-	-	-	-	2	-
East Dunbartonshire	38	-	2	5	1	2	12
East Lothian	-	-	-	-	-	-	-
East Renfrewshire	17	-	1	-	-	-	1
Edinburgh, City of	83	6	12	8	4	10	42
Eilean Siar	-	-	-	-	-	-	-
Falkirk	43	1	6	2	1	2	8
Fife	39	2	1	3	-	4	12
Glasgow City	290	11	25	20	5	16	104
Highland	29	2	1	1	1	2	2
Inverclyde	33	1	1	-	2	1	1
Midlothian	15	2	2	1	1	3	4
Moray	-	-	-	-	-	-	-
North Ayrshire	31	-	-	2	-	2	4
North Lanarkshire	104	8	11	7	3	9	41
Orkney Islands	-	-	-	-	-	-	-
Perth & Kinross	16	-	-	-	1	2	3
Renfrewshire	47	1	2	2	3	4	17
Scottish Borders	7	-	-	-	-	-	-
Shetland Islands	-	-	-	-	-	-	-
South Ayrshire	21	-	-	-	-	-	2
South Lanarkshire	44	3	9	8	2	6	30
Stirling	13	-	2	1	-	-	3
West Dunbartonshire	19	1	1	5	1	3	5
West Lothian	41	-	-	2	1	2	14
All local authorities	1,104	41	84	72	30	77	353

(1) Excludes head teachers.  
National figures on page 29.

LOCAL AUTHORITY SPECIAL

Table 9.9: Support staff in special schools<sup>(1)</sup>, 2009

	ASN auxiliary or care assistant	Classroom assistant	Other classroom staff	Other non- classroom staff
Aberdeen City	70	-	27	55
Aberdeenshire	65	-	12	18
Angus	-	-	-	-
Argyll & Bute	16	-	1	2
Clackmannanshire	13	-	-	20
Dumfries & Galloway	-	8	-	1
Dundee City	51	-	4	7
East Ayrshire	15	19	8	5
East Dunbartonshire	44	1	2	12
East Lothian	-	-	-	-
East Renfrewshire	19	-	-	7
Edinburgh, City of	26	8	48	36
Eilean Siar	-	-	-	-
Falkirk	-	39	-	12
Fife	46	21	-	36
Glasgow City	172	188	55	102
Highland	54	-	4	7
Inverclyde	35	-	3	5
Midlothian	23	-	12	2
Moray	-	-	-	-
North Ayrshire	-	35	9	6
North Lanarkshire	149	10	17	19
Orkney Islands	-	-	-	-
Perth & Kinross	21	-	1	4
Renfrewshire	3	51	10	10
Scottish Borders	5	-	-	2
Shetland Islands	-	-	-	-
South Ayrshire	25	-	-	12
South Lanarkshire	59	2	2	20
Stirling	26	-	-	15
West Dunbartonshire	21	5	9	9
West Lothian	16	31	22	30
All local authorities	977	418	244	455

(1) See online spreadsheet version for full detail. Excludes grant aided special schools. National figures on page 30.

## CENTRALLY EMPLOYED STAFF

Table 10.1: Centrally employed teachers and support staff<sup>(1)</sup>, 2007-2009

	Teachers			Support staff		
	2007	2008	2009	2007	2008	2009
Aberdeen City	15	24	28	96	90	87
Aberdeenshire	22	47	19	99	143	156
Angus	19	15	12	61	57	71
Argyll & Bute	2	1	-	49	40	73
Clackmannanshire	3	8	10	42	42	37
Dumfries & Galloway	103	87	134	167	67	185
Dundee City	2	5	7	113	50	44
East Ayrshire	9	10	13	76	84	59
East Dunbartonshire	42	40	32	236	261	222
East Lothian	19	19	29	27	52	31
East Renfrewshire	12	13	11	62	48	90
Edinburgh, City of	72	72	78	224	290	110
Eilean Siar	4	4	5	14	14	17
Falkirk	4	5	4	161	171	164
Fife	85	52	64	136	160	191
Glasgow City <sup>(2)</sup>	57	58	30	236	229	320
Highland <sup>(2)</sup>	83	85	15	70	72	87
Inverclyde	13	10	5	47	45	80
Midlothian	15	8	12	43	55	98
Moray	49	47	45	45	57	55
North Ayrshire	19	26	21	108	97	111
North Lanarkshire	29	36	36	173	253	224
Orkney Islands	2	4	5	8	17	18
Perth & Kinross	93	90	11	49	52	43
Renfrewshire	6	5	1	55	28	80
Scottish Borders	57	68	11	45	58	91
Shetland Islands	5	6	6	32	29	28
South Ayrshire	3	4	6	37	77	44
South Lanarkshire	41	7	4	148	108	132
Stirling	19	25	20	40	30	46
West Dunbartonshire	43	33	45	73	19	129
West Lothian	19	21	24	100	142	133
<b>Scotland</b>	<b>964</b>	<b>933</b>	<b>745</b>	<b>2872</b>	<b>2,936</b>	<b>3,257</b>

(1) Teachers include peripatetic teachers, visiting specialists, hospital teaching service and home visiting tutors. Excludes pre-school home visiting teachers and mainstream supply pools.

Support staff includes quality improvement officers, music instructors, mainstream supply teacher pools and other centrally employed staff. See also background note 24.

(2) Glasgow and Highland were unable to complete individual level teacher and support staff data from 2007 and 2008. Totals were provided and published where necessary.

## CENTRALLY EMPLOYED STAFF

Table 10.2: Centrally employed teachers, including supply pool teachers<sup>(1)</sup>, 2009

	Primary	Additional Support Needs	English as an Additional Language	Music	Physical Education	Art & Design	Other / not known	Total	Mainstream supply pool
Aberdeen City	-	7	20	-	-	-	1	28	-
Aberdeenshire	1	5	4	-	1	1	7	19	24
Angus	1	7	-	-	-	1	4	12	1
Argyll & Bute	-	-	-	-	-	-	-	-	-
Clackmannanshire	2	6	-	2	-	1	1	10	19
Dumfries & Galloway	23	97	5	-	-	-	10	134	3
Dundee City	6	2	-	-	-	-	-	7	-
East Ayrshire	-	6	-	2	-	-	5	13	-
East Dunbartonshire	6	17	9	-	-	-	1	32	68
East Lothian	-	5	-	8	9	4	3	29	9
East Renfrewshire	2	4	-	5	-	1	-	11	6
Edinburgh, City of	20	17	20	1	4	1	14	78	61
Eilean Siar	1	3	1	-	-	-	-	5	-
Falkirk	-	-	4	-	-	-	-	4	-
Fife	3	14	-	13	11	13	10	64	-
Glasgow City	4	3	15	2	3	-	3	30	128
Highland	1	11	-	-	-	-	4	15	-
Inverclyde	2	2	1	-	-	-	-	5	-
Midlothian	4	2	-	2	2	1	1	12	6
Moray	-	20	4	6	8	5	2	45	-
North Ayrshire	2	16	1	-	-	-	2	21	16
North Lanarkshire	22	7	6	-	-	-	1	36	2
Orkney Islands	1	3	-	-	-	-	1	5	-
Perth & Kinross	5	5	-	-	-	-	1	11	-
Renfrewshire	1	-	-	-	-	-	-	1	13
Scottish Borders	6	1	-	-	2	-	2	11	36
Shetland Islands	-	6	-	-	-	-	-	6	-
South Ayrshire	2	4	-	1	-	-	-	6	8
South Lanarkshire	2	1	-	-	-	-	1	4	53
Stirling	9	3	1	3	2	1	1	20	14
West Dunbartonshire	16	15	-	1	-	1	11	45	3
West Lothian	4	2	-	-	2	-	16	24	32
Scotland	144	289	91	47	44	29	100	745	502

(1) Includes peripatetic teachers, visiting specialists, hospital teaching service, home visiting tutors and mainstream supply pools.

## CENTRALLY EMPLOYED STAFF

Table 10.3: Centrally employed support staff, 2009

	Education centre	Educational Psychologist	Peripatetic Music Instructor	Foreign language assistant	Home-school link worker	Business Manager	Education Welfare Officer	Outdoor centre	Quality Improvement Officer	Other
Aberdeen City	-	18	38	-	-	-	6	8	18	-
Aberdeenshire	-	22	42	10	-	-	-	-	56	3
Angus	-	8	16	-	-	-	-	-	33	12
Argyll & Bute	22	8	17	-	-	-	-	-	19	7
Clackmannanshire	-	5	-	-	-	-	3	-	9	1
Dumfries & Galloway	2	11	21	-	15	-	7	-	13	112
Dundee City	-	10	-	-	-	-	14	-	17	4
East Ayrshire	-	9	13	-	-	-	-	4	9	24
East Dunbartonshire	66	9	25	-	19	11	-	-	16	8
East Lothian	-	7	0	-	-	-	-	3	10	2
East Renfrewshire	-	11	21	3	-	-	-	-	20	29
Edinburgh, City of	-	35	6	-	-	-	4	4	-	-
Eilean Siar	-	2	7	-	-	-	-	-	8	-
Falkirk	28	11	17	-	-	-	-	4	24	80
Fife	-	25	49	-	12	16	1	-	16	74
Glasgow City	-	51	25	39	-	2	-	22	43	11
Highland	6	17	19	9	-	-	-	-	13	23
Inverclyde	-	9	13	4	-	1	1	-	8	44
Midlothian	41	7	19	-	3	-	8	-	11	3
Moray	-	7	14	-	-	-	-	-	34	-
North Ayrshire	-	15	30	1	11	-	8	6	15	10
North Lanarkshire	-	29	67	13	8	-	1	16	62	28
Orkney Islands	-	3	-	-	-	1	-	2	4	8
Perth & Kinross	17	10	11	-	-	-	-	-	-	5
Renfrewshire	-	11	14	-	24	-	-	-	6	12
Scottish Borders	3	7	15	-	5	3	-	1	13	9
Shetland Islands	-	2	14	-	1	-	-	-	11	-
South Ayrshire	-	4	7	-	2	-	-	4	10	9
South Lanarkshire	2	26	38	-	-	-	-	-	14	-
Stirling	-	6	12	-	-	-	-	-	14	-
West Dunbartonshire	93	10	-	4	-	1	-	-	18	-
West Lothian	16	15	23	-	-	22	-	8	12	6
Scotland	296	418	592	83	100	57	52	81	555	523

National figures on page 32.

PRE-SCHOOL

Table 11.1: Teachers employed or working peripatetically in local authority and partnership pre-school education centres, 2007-2009

These figures are taken from the annual January Census and have been previously published at the following link:

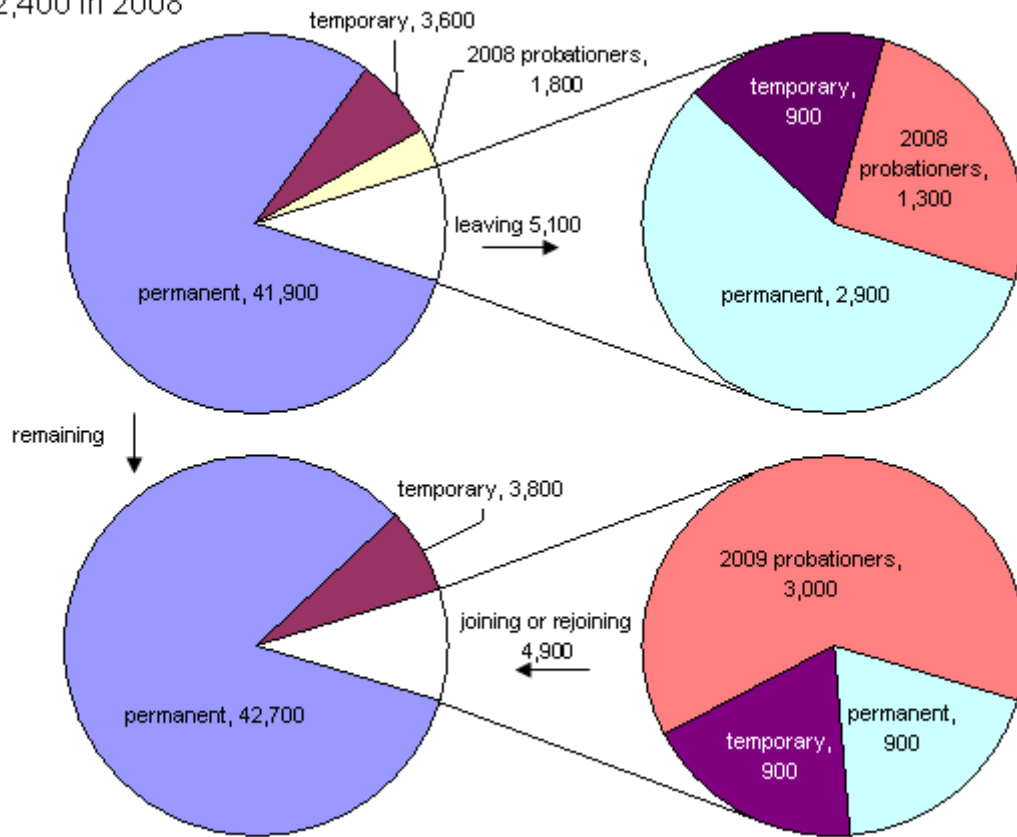
<http://www.scotland.gov.uk/Topics/Statistics/Browse/Children/PubPreSchoolEdChildcare>

	Jan 2007	Jan 2008	Jan 2009
Aberdeen City	104	100	96
Aberdeenshire	109	101	100
Angus	32	37	33
Argyll & Bute	15	10	11
Clackmannanshire	15	14	16
Dumfries & Galloway	33	39	42
Dundee City	48	40	39
East Ayrshire	40	37	42
East Dunbartonshire	29	34	26
East Lothian	54	49	51
East Renfrewshire	37	40	43
Edinburgh City	179	178	172
Eilean Siar	7	-	2
Falkirk	39	44	33
Fife	119	116	122
Glasgow City	164	166	153
Highland	79	69	52
Inverclyde	37	21	19
Midlothian	41	39	37
Moray	12	14	11
North Ayrshire	38	40	38
North Lanarkshire	78	74	84
Orkney Islands	10	9	12
Perth & Kinross	48	51	53
Renfrewshire	33	32	36
Scottish Borders	39	45	39
Shetland Islands	20	15	21
South Ayrshire	39	46	43
South Lanarkshire	85	90	102
Stirling	29	28	19
West Dunbartonshire	7	10	10
West Lothian	68	81	79
All local authorities	1,686	1,672	1,638

CHANGES IN THE WORKFORCE

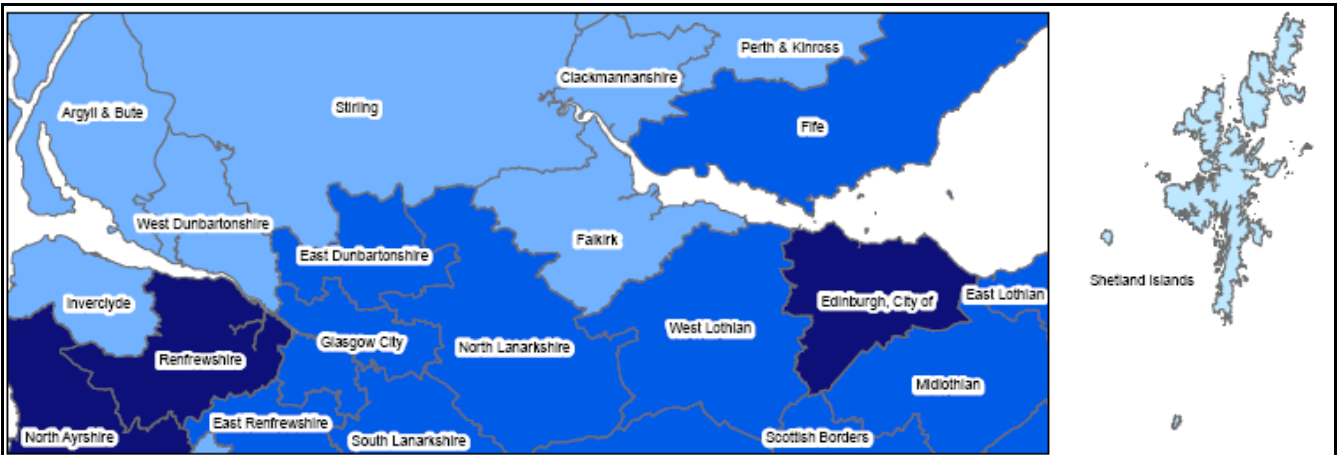
Chart 10: Changes in the school-based workforce since 2008<sup>(1)</sup>

52,400 in 2008

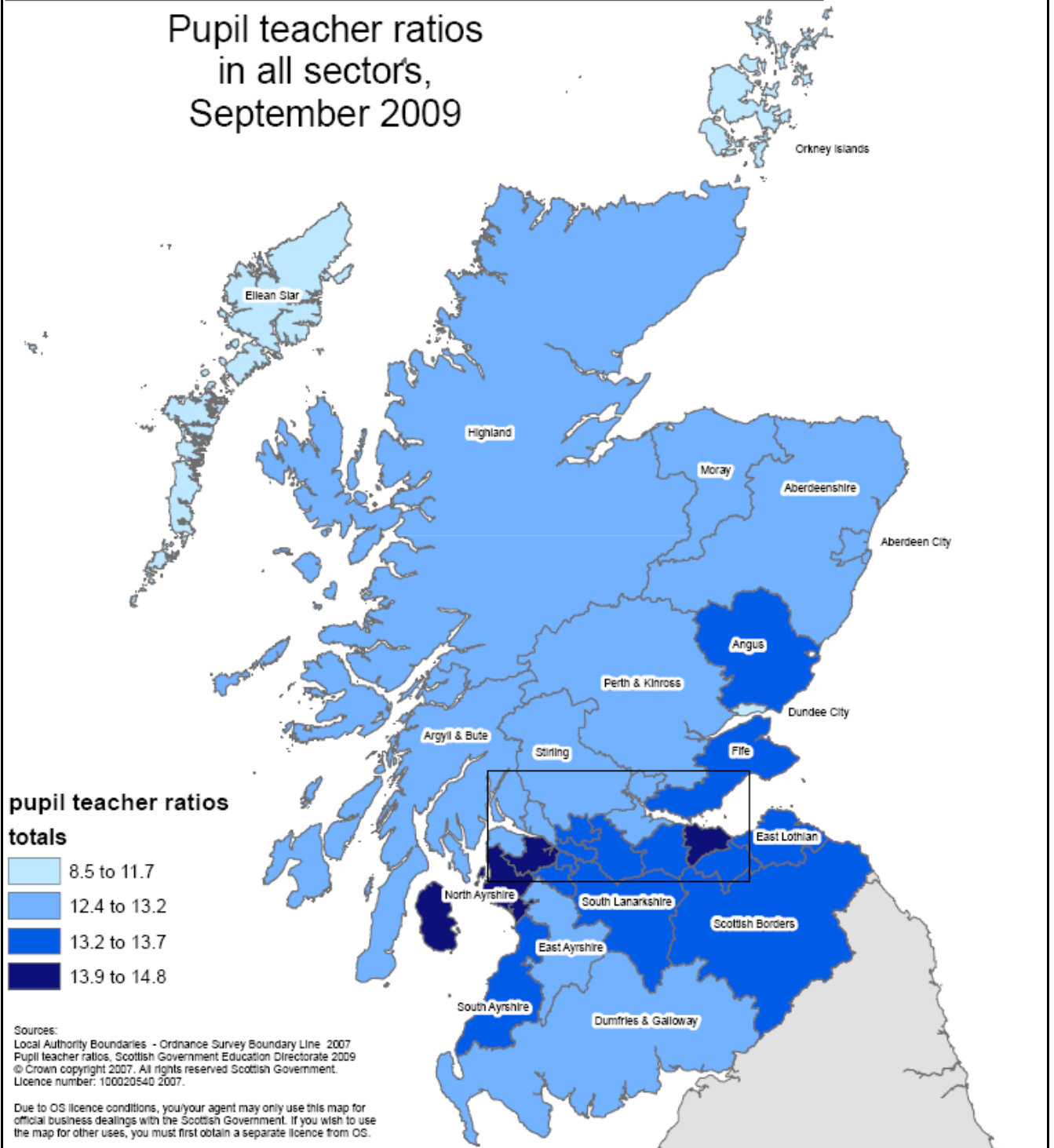


51,300 in 2008

Excludes centrally employed teachers in Glasgow and Highland.



## Pupil teacher ratios in all sectors, September 2009



## Index

	background note	table
Absence	23	2.14, 3.17, 4.13
Age		1.4, 2.2, 2.3, 2.9, 2.10, 2.12, 3.2, 3.3, 3.10, 3.12, 3.13, 4.2, 4.3, 4.10, 4.11, 5.1, 6.3, 7.3, 8.3; charts 1, 2, 4, 6, 8
Care assistants		2.15, 3.18, 4.14, 7.11, 8.11, 9.9
Centrally employed staff	24	1.1, 5.1-5.3, 10.1-10.3
Chartered teachers	16	2.11, 3.8, 4.9
Class contact time	19	2.13, 3.16, 4.12
Classroom assistants		2.15, 3.18, 4.14, 7.11, 8.11, 9.9
Continuing Professional Development		2.11, 3.8, 4.9
Educational Psychologists		5.3, 10.3
Ethnic background	21	2.7, 3.7, 4.7, 7.8, 8.8, 9.7, chart 3
Foreign language assistants		2.15, 3.18, 4.14, 7.11, 8.11
Gaelic medium teachers		2.9, 3.11, 3.12, 7.10, 8.10
Gender		1.2, 2.1, 2.2, 2.5, 2.6, 2.11, 2.12, 2.14, 3.1, 3.2, 3.4-3.6, 3.8, 3.9, 3.14, 3.17, 4.1, 4.2, 4.4-4.6, 4.9, 4.11, 4.13, 5.1, 7.1, 7.6, 8.1, 8.6, 9.1, 9.5
Grade	16	2.3, 2.4, 2.7, 2.11, 2.13, 3.3, 3.4, 3.7, 3.8, 3.16, 4.3, 4.4, 4.7, 4.9, 4.12, 7.5, 8.5, 9.4
GTC registration	20	
Headcount number of teachers	11	1.3, 7.6, 8.6, 9.5, charts 1, 2, 4, 6, 8
Headteachers		2.3, 2.4, 2.7, 2.11, 2.13, 3.3, 3.4, 3.7, 3.8, 3.16, 4.3, 4.4, 4.7, 4.9, 4.12, 7.5, 8.5, 9.4
Induction scheme	17	7.7, 8.7
Local authority		6.1-11.1
Part time staff		1.3, 2.4, 2.13, 3.4, 3.16, 4.4, 4.12, 7.6, 8.6, 9.5
Peripatetic staff	24	5.1-5.3, 10.1-10.3
Primary school teachers		1.1, 1.3, 1.4, 2.1-2.15, 7.1-7.11, charts 4 and 5
Probationers	17	7.7, 8.7
Pupil teacher ratios		1.1, 1.2, 2.1, 3.1, 4.1, 6.2, 7.2, 8.2, 9.2
Roman catholic approved teachers	22	2.10, 3.13, 4.10
Qualifications	20	
School numbers		1.1, 1.5
Secondary school teachers		1.1, 1.3, 1.4, 3.1-3.18, 8.1-8.11, charts 6 and 7
Secondments		2.14, 3.17, 4.13
Additional support needs auxiliaries		2.15, 3.18, 4.14, 7.11, 8.11, 9.9
Special school teachers	14	1.1, 1.3, 1.4, 4.1-4.14, 9.1-9.9
Subjects taught	18	2.8, 3.9-3.11, 3.14, 3.15, 4.8, 5.2, 7.9, 8.9, 9.8, 10.2
Supply teachers	23	2.5, 2.12, 3.5, 3.14, 4.5, 4.11, 5.1-5.3, 10.2
Support staff		2.15, 3.18, 4.14, 5.3, 7.11, 8.11, 9.9, 10.1, 10.3
Teacher workforce		chart 10
Temporary staff		2.6, 3.6, 4.6, 7.7, 8.7, 9.6
Visiting specialists	24	1.1, 2.8, 4.8, 5.1, 5.2, 10.1, 10.2

## A NATIONAL STATISTICS PUBLICATION FOR SCOTLAND

Official and National Statistics are produced to high professional standards set out in the Code of Practice for Official Statistics at <http://www.statisticsauthority.gov.uk/assessment/code-of-practice/code-of-practice-for-official-statistics.pdf>. Both undergo regular quality assurance reviews to ensure that they meet customer needs and are produced free from any political interference.

Statistics assessed, or subject to assessment, by the UK Statistics Authority carry the National Statistics label, a stamp of assurance that the statistics have been produced and explained to high standards and that they serve the public good.

Further information about Official and National Statistics can be found on the UK Statistics Authority website at [www.statisticsauthority.gov.uk](http://www.statisticsauthority.gov.uk)

## SCOTTISH GOVERNMENT STATISTICIAN GROUP

### Our Aim

To provide relevant and reliable information, analysis and advice that meet the needs of government, business and the people of Scotland.

For more information on the Statistician Group, please see the Scottish Government website at [www.scotland.gov.uk/statistics](http://www.scotland.gov.uk/statistics)

### Correspondence and enquiries

Enquiries on this publication should be addressed to:

Kasia Bejtka  
Education Analytical Services  
Scottish Government Education Directorate  
Room 1-B, Victoria Quay  
Edinburgh, EH6 6QQ  
Telephone: 0131 244 4933  
Fax: 0131 244 0354  
e-mail: [school.stats@scotland.gsi.gov.uk](mailto:school.stats@scotland.gsi.gov.uk)

General enquiries on Scottish Government statistics can be addressed to:

Office of the Chief Statistician  
Scottish Government  
1N.04, St Andrews House  
EDINBURGH EH1 3DG  
Telephone: (0131) 244 0442  
e-mail: [statistics.enquiries@scotland.gsi.gov.uk](mailto:statistics.enquiries@scotland.gsi.gov.uk)

Further contact details, e-mail addresses and details of previous and forthcoming publications can be found on the Scottish Government Website at [www.scotland.gov.uk/statistics](http://www.scotland.gov.uk/statistics)

### Complaints and suggestions

If you are not satisfied with our service, please write to the Chief Statistician, Mr Rob Wishart, 1N.04, St Andrews House, Edinburgh, EH1 3DG, Telephone: (0131) 244 0302, e-mail [rob.wishart@scotland.gsi.gov.uk](mailto:rob.wishart@scotland.gsi.gov.uk). We also welcome any comments or suggestions that would help us to improve our standards of service.

### ScotStat

If you would like to be consulted about new or existing statistical collections or receive notification of forthcoming statistical publications, please register your interest on the Scottish Government ScotStat website at [www.scotland.gov.uk/scotstat](http://www.scotland.gov.uk/scotstat)

Additional copies of these publications may be purchased from **Scottish Government Publication Sales, Blackwell's Bookshop, 53 South Bridge, Edinburgh, EH1 1YS**, Telephone: 0131 622 8283 or 0131 622 8258, Fax: 0131 557 8149. Cheques should be made payable to 'Blackwell's Bookshop'.

ISSN < ISSN number > ISBN < ISBN number >

Price < Price >

### Crown Copyright

Brief extracts from the Crown Copyright material in this publication may be reproduced provided the source is fully acknowledged.