

GYPSIES/TRAVELLERS IN SCOTLAND

The Twice Yearly Count – No. 15: January 2009

SUMMARY OF FINDINGS

- The January 2009 Count recorded a total of 497 Gypsy/Traveller households living on Council/Registered Social Landlord Sites (RSL) sites, private sites and unauthorised encampments in Scotland. This represents an estimated population of around 1,590 people, a small increase from the January 2008 population of 1,547 people.
- There were 280 households (56%) living on Council/RSL sites, 109 (22%) on private sites and 108 (22%) on unauthorised encampments. Comparable figures for January 2008 were 276 (61%) on Council/RSL sites, 81 (18%) on private sites and 98 (22%) on unauthorised encampments).
- There are currently 32 Council/RSL sites across Scotland. 29 of these operate all year round and 3 are only open in the summer. These sites provide a total of 499 pitches (down from 500 in the January 2008 Count) of which 320 (64%) are currently tenanted, 103 (21%) are available for let but untenanted and 76 (15%) are unavailable for letting.
- Of the 32 Council/RSL sites, 9 were operating at full capacity. The 3 seasonal sites were unoccupied at the time of the Count while sites in Glasgow and North Lanarkshire remain unused.
- Around 70% of households based on Council/RSL sites had been tenants for over a year. 29% of all households had held their tenancies for 5 years or more.
- There were 21 private sites at the time of the Count, 17 of which operate all year round and 4 of which are seasonal open only in the summer months. 109 households were living on private sites, with the great majority (95%) having been there for 4 weeks or longer
- The number of unauthorised encampments on the day of the January 2009 count stood at 20 across 9 local authorities. Over a six month period encampments varied in size from as little as two to 150 households.
- Around 45% of the Gypsy/Traveller population living on Council/RSL sites is aged 19 or under, compared to only 23% in the wider Scottish population; conversely only 8% of Gypsies/Travellers are over 60, compared to around 22% of the general population.

A report by Craigforth on behalf of
Scottish Government Social Research

CONTENTS		Page
1.	INTRODUCTION	4
2.	OVERALL TRENDS	5
	Distribution	6
3.	COUNCIL/RSL SITES	13
	Provision	13
	Population	16
	Change, Movement and Demand	20
4.	PRIVATE SITES	25
	Population and Provision	25
	Characteristics of Sites	28
5.	UNAUTHORISED ENCAMPMENTS	30
	Background	30
	Population and Unauthorised Encampment Activity	31
	6 Month Activity	35

Acknowledgement

Thanks to all the staff members employed by local authorities, Registered Social Landlord (RSL) and Police Forces who assisted with the completion of the January 2009 Count

INDEX OF TABLES

Table 2.1: Gypsy/Traveller Households by Local Authority Area and Type of Site, January 2006 to January 2009	8
Table 2.2: Distribution of Gypsy/Traveller Households by Local Authority	10
Table 2.3: Change in Winter (January) Households by Region	11
Table 3.1: Pitch Provision and Occupancy by Local Authority Area January 2009.....	15
Table 3.2: Unavailable Pitches	16
Table 3.3: Demographic Comparison: Gypsies/ Travellers on Council/ RSL Sites/ Scotland as a whole	18
Table 3.4: Council/RSL – Age Structure Profile by Site January 2009	19
Table 3.5: Length of Tenancy Profile on Council/RSL by Local Authority Area January 2009.....	20
Table 3.6: Duration of tenancies on Council/RSL Sites January 2009.....	21
Table 3.7: Absences from Council/RSL Sites, January 2009	22
Table 4.1: Households Living in Private Sites by Local Authority Area, January 2009.....	27
Table 4.2: Private Sites at January 2009	28
Table 4.3: Private Sites: Availability and Usage January 2009.....	29
Table 5.1: Number of Households on Unauthorised Encampments (Winter) January 2005 to January 2009.....	32
Table 5.2: Characteristics of Unauthorised Encampments Occupied January 2009.....	33
Table 5.3: Encampment locations in use at time of the count.	34
Table 5.4: Usage of unauthorised encampment locations July 2008 - January 2009 ..	36

INDEX OF FIGURES

Figure 2.1: Gypsy/Traveller Population – Summer and Winter 2001 to 2009	5
Figure 2.2: Winter Population of Gypsies/Travellers: January 2001 to January 2009	7
Figure 2.3: Distribution of All Households and Gypsy/Traveller Households: January 2009	12
Figure 3.1: Number of Households on Council/RSL Sites (Winter) January 2001 to January 2009	17
Figure 4.1: Number of Households on Private Sites (Winter) January 2001 to January 2009	26
Figure 5.1: Households Living in Unauthorised Encampments by Local Authority Area January 2009	31

1. INTRODUCTION

1.1 Gypsies/Travellers are a small but distinctive ethnic and cultural minority within the Scottish population. The Scottish Government recognises that Gypsies/Travellers have specific requirements and should receive the same level of protection from prejudice and discrimination as other ethnic minority groups in Scotland. The current definition of Gypsies/Travellers excludes Travelling Showpeople/Circus and New (Age) Travellers.

1.2 In July 1998, the former Scottish Executive (now Scottish Government) introduced a series of Twice Yearly Counts of this population (undertaken in January and July) to establish standardised and consistent estimates across Scotland. The purpose of the Count is to better understand the characteristics of this population and to assist and inform the development of public policies and services for Gypsies/Travellers, both nationally and locally.

1.3 The Count is based on an estimate of the number of Gypsy/Traveller households living on:

- Sites provided by Councils or Registered Social Landlords (RSLs)
- Privately owned sites
- Unauthorised encampments.

1.4 It is therefore a Count of the site/encampment based population only and does not seek to capture those living in ordinary housing. It can be difficult to identify Gypsies/Travellers in ordinary housing, as many do not want to make their ethnicity known and do not identify themselves to their local authority, other organisations or even other Gypsies/Travellers.

1.5 Travelling extensively for some or all of the year has become less common than in the past for some of the Scottish based Gypsy/Traveller population. This appears particularly true of those who have become settled for long periods of time on official Council/RSL or private sites. For others, travelling is still very much part of their culture and lifestyle.

1.6 The incidence of travelling means that the population of Gypsies/Travellers in Scotland can vary considerably at different points in time. Previous counts have demonstrated that the summer months are much more popular times for travelling, although some local authorities do report encampments all year round.

1.7 As (due to unavoidable circumstances) there was no return from West Lothian in January 2008, estimates based on the 2007 figures were used in this count to make comparisons over time. This will affect all subsequent comparisons, including the 2009 Count.

2. OVERALL TRENDS

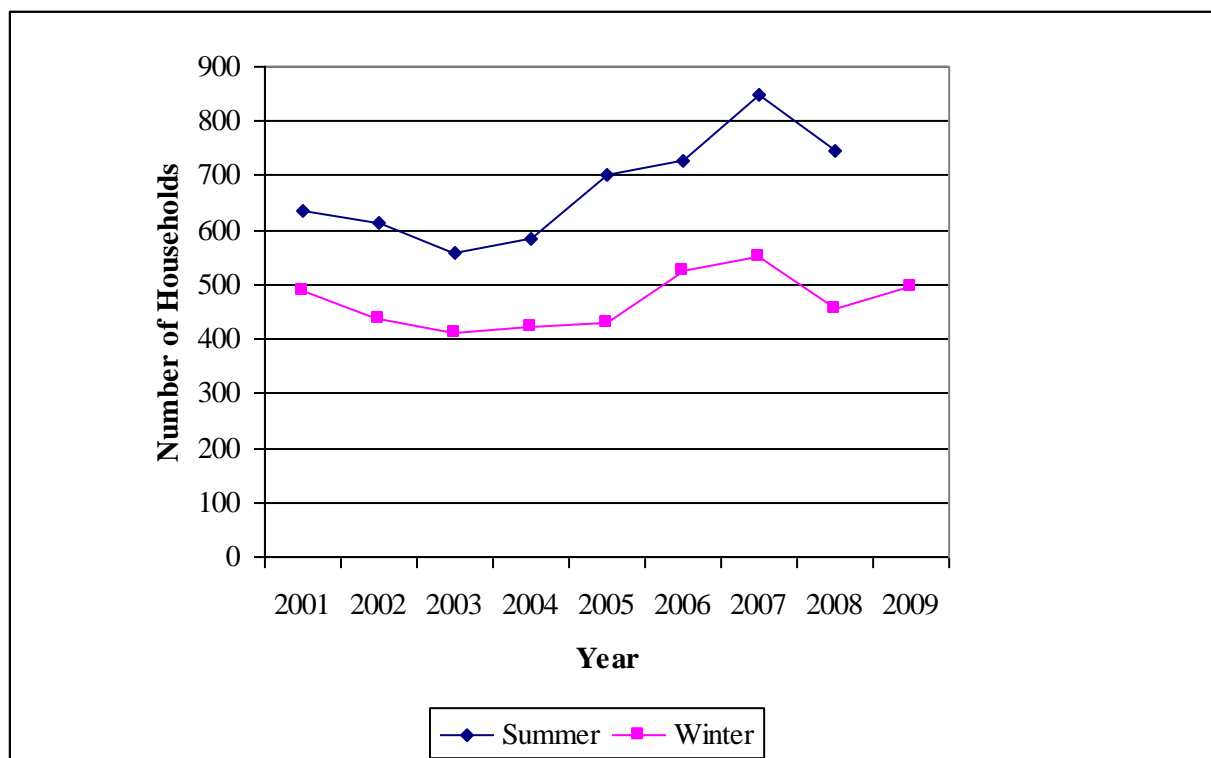
2.1 In January 2009 there were 497 Gypsy/Traveller households recorded on sites and encampments in Scotland. This represents an increase of 9% from January 2008 (455 households), and is similar to the number of households recorded in 2001 (490 households).

2.2 It is estimated the 497 households represent 1,590 people. This is estimated by applying the average household size (see Table 3.3. in Chapter 3) of 3.2 to the number of households. Gypsies/Travellers account for a very small percentage, only 0.03% of the total Scottish population.

2.3 Over the years the summer population has been consistently higher than the winter population. The January Count shows a decrease of a third in the number of households recorded in July 2008. This is similar to the average decrease of 31% over the 8 year period since 2001.

2.4 Figure 2.1 shows the Count of summer and winter households since 2001. As can be seen, although the two patterns seem to mirror each other, there has been a widening of the gap between winter and summer households over time, with January 2009 showing an increase on January 2008.

Figure 2.1: Gypsies/Travellers Population – Summer and Winter 2001 to 2009



Distribution

2.5 Unauthorised encampments account for a growing proportion of the total number of Gypsy/Traveller households. In 2001 they accounted for 11% of the January population; this had doubled to 22% by January 2009. In contrast, the proportion on private sites had dropped since 2001, when it was 28%, which evidence indicates was an exceptionally high year. The proportion of Gypsy/Traveller households on council sites has in the years since 2001, fluctuated between 54% and 70%, with current levels closer to 2001 levels (60%).

2.6 The distribution of Gypsy/Traveller households has changed since January 2008. The population levels on council sites has decreased slightly, but still accounts for the largest proportion, the levels on private sites have increased and those in encampments have remained relatively stable.

2.7 In January 2009, the largest proportion (56%) of households continued to be those who lived on Council sites, although this was smaller than in January 2008 (61%). There were 10 local authorities (Angus, Argyll and Bute, Clackmannanshire, Dundee, East Dunbartonshire, East/Midlothian, Edinburgh, Stirling and West Dunbartonshire) who reported all their Gypsy/Traveller households to be tenants of Council/RSL sites at the time of the Count.

2.8 The proportion of households living on private sites (22%) has increased since January 2008 (18%). This is now the same proportion as those who live on unauthorised encampments. While figures in 2008 might suggest a decline in usage of private sites, and those in 2009 a recovery, the difficulties in collecting accurate data means that what is available can be unrepresentative of what might actually be happening on these sites. Longer term trends (over 15-20 years) might give more insight, when and if such a perspective is available.

2.9 While the proportion of unauthorised encampments has increased since 2001, there has been no change since last year's January Count (22%). The highest number of winter encampments recorded was 23% in 2006. However, distribution within individual local authorities can be quite different, with three (Aberdeenshire, Moray and Renfrewshire) reporting all of their Gypsies/Travellers households to be living on unauthorised encampments at the time of the count.

2.10 The changing trend in different site usage amongst the winter population is illustrated for Scotland as a whole in Figure 2.2. Table 2.1 shows the trend by local authority area.

Figure 2.2: Winter Population of Gypsies/Travellers January 2001 to January ... 2009

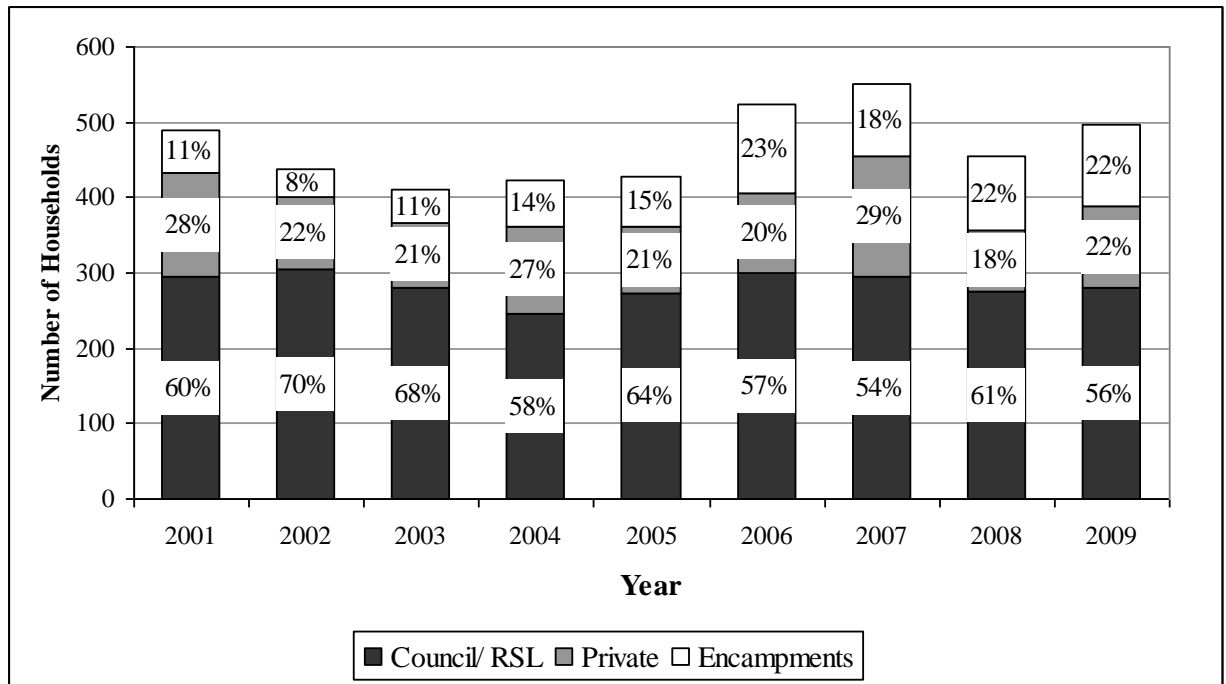


Table 2.1: Gypsy/Traveller Households by Local Authority Area and Type of Site, January 2006 to January 2009

Local Authority	January 2006				January 2007				January 2008				January 2009			
	A	B	C	D	A	B	C	D	A	B	C	D	A	B	C	D
Aberdeen	7	0	0	7	11	5	4	20	10	0	20	30	4	6	14	24
Aberdeenshire	0	0	11	11	0	0	0	0	0	0	21	21	0	0	5	5
Angus	18	16	2	36	18	21	23	62	7	0	0	7	6	0	0	6
Argyll & Bute	23	0	0	23	26	0	0	26	16	0	0	16	18	0	0	18
Clackmannanshire	7	0	0	7	5	0	0	5	0	0	0	0	5	0	0	5
Dumfries & Galloway	18	0	3	21	20	0	0	20	20	4	0	24	16	2	0	18
Dundee	17	0	31	48	14	0	0	14	12	0	0	12	11	0	0	11
East Ayrshire	0	1	7	8	0	6	7	13	0	0	2	2	0	2	5	7
East Dunbartonshire	1	0	0	1	2	0	0	2	5	0	0	5	5	0	0	5
East/ Midlothian	13	0	18	31	7	0	9	16	12	0	0	12	9	0	0	9
East Renfrewshire	0	16	0	16	0	15	0	15	0	0	0	0	0	0	0	0
Edinburgh	15	0	9	24	16	0	0	16	12	0	0	12	16	0	0	16
Eilean Siar	0	0	0	0	0	0	0	0	0	0	0	0	0	0	0	0
Falkirk	10	0	0	10	13	5	0	18	12	5	0	17	13	16	0	29
Fife	44	20	10	74	45	20	3	68	46	24	6	76	46	32	0	78
Glasgow	2	0	0	2	0	0	0	0	0	0	0	0	0	0	0	0
Highland	19	1	4	24	27	0	16	43	27	0	8	35	33	0	30	63
Inverclyde	0	0	3	3	0	0	0	0	0	0	0	0	0	0	0	0
Moray	0	0	2	2	0	10	0	10	0	0	15	15	0	0	13	13
North Ayrshire	19	0	3	22	0	0	0	0	12	0	0	12	8	0	11	19
North Lanarkshire	0	0	5	5	8	0	19	27	0	0	0	0	0	0	0	0
Orkney	0	0	0	0	0	0	0	0	0	0	0	0	0	0	0	0
Perth & Kinross	16	0	5	21	21	0	5	26	16	25	4	45	16	25	0	41
Renfrewshire	0	0	0	0	0	0	0	0	0	0	0	0	0	0	6	6
Scottish Borders	0	15	0	15	0	10	0	10	0	0	0	0	0	0	0	0
Shetland	0	0	0	0	0	0	0	0	0	0	0	0	0	0	0	0
South Ayrshire	8	0	0	8	8	0	0	8	8	0	8	16	7	0	2	9
South Lanarkshire	26	38	2	66	27	67	2	96	24	23	0	47	28	26	0	54
Stirling	11	0	0	11	5	0	0	5	16	0	0	16	5	0	0	5
West Dunbartonshire	20	0	0	20	21	0	0	21	20	0	5	25	21	0	0	21
West Lothian	5	0	4	9	1	0	9	10	1	0	9	10	13	0	22	35
SCOTLAND	299	107	119	525	295	159	97	551	276	81	98	455	280	109	108	497
<i>Categories as % of total</i>	<i>57%</i>	<i>20%</i>	<i>23%</i>	<i>100%</i>	<i>54%</i>	<i>29%</i>	<i>18%</i>	<i>100%</i>	<i>61%</i>	<i>18%</i>	<i>22%</i>	<i>100%</i>	<i>56%</i>	<i>22%</i>	<i>22%</i>	<i>100%</i>
Population*	927	332	369	1,628	885	477	291	1,653	938	275	333	1,547	896	349	346	1,590

A Estimated households on Council/RSL Sites

C Estimated households on Unauthorised Encampments

B Estimated households on Private Sites

D Total estimated number of Households

West Lothian figures for January 2008 are as at January 2007

* The estimate population is calculated by multiplying the number of households by the average size of households. Actual numbers for the population on Council/RSL Sites is collected, and can be see at Table 3.3.

2.11 At the time of the January 2009 Count the largest Gypsy/Traveller population was to be found in Fife (78 households), followed by Highland (63) and South Lanarkshire (54). These three authorities account for 39% of the total January Gypsy/Traveller population.

2.12 Seven local authorities recorded no Gypsies/Travellers present on the day of the count; East Renfrewshire, Eilean Siar, Glasgow, Inverclyde, North Lanarkshire, Orkney, Scottish Borders and Shetland.

2.13 The smallest populations on the day of the Count were recorded in Aberdeenshire, Angus, Clackmannanshire, East Ayrshire, East Dunbartonshire, East/Midlothian, Renfrewshire, South Ayrshire and Stirling who all had less than 10 households at the time of the Count.

2.14 The biggest increase in household numbers at local authority level since January 2008 were in Highland (+28) and Falkirk (+12). There was also a substantial increase of 25 households in West Lothian, however this is based on comparing the January 2008 figures that were estimated from the January 2007 Count (it was not possible for West Lothian to make a return in January 2008). It is therefore uncertain whether this year's figures represent a genuine increase. Indications are that it is indeed an increase; the West Lothian site manager notes a surprising rise in encampments on newly vacant 'to-let' plots on industrial estates.

2.15 The number of households fell significantly in Aberdeenshire (-16), Stirling (-11) and South Ayrshire (-7). South Ayrshire reported that there had been flooding on the Girvan site which could account for the loss of 7 households. The site manager also remarked that poor weather and it generally being a 'quiet time of year' had led to a low level of encampments.

2.16 Table 2.2 shows the distribution, according to type of site, of Gypsy/Traveller households within different local authorities in Scotland.

Table 2.2: Distribution of Gypsy/Traveller Households by Local Authority

Local Authority	Council/RSL	Private	Unauthorised encampments	Total Households
Aberdeen	17%	25%	58%	24
Aberdeenshire	0%	0%	100%	5
Angus	100%	0%	0%	6
Argyll & Bute	100%	0%	0%	18
Clackmannanshire	100%	0%	0%	5
Dumfries & Galloway	89%	11%	0%	18
Dundee	100%	0%	0%	11
East Ayrshire	0%	29%	71%	7
East Dunbartonshire	100%	0%	0%	5
East/ Midlothian	100%	0%	0%	9
East Renfrewshire	0	0	0	0
Edinburgh	100%	0%	0%	16
Eilean Siar	0	0	0	0
Falkirk	45%	55%	0%	29
Fife	59%	41%	0%	78
Glasgow	0	0	0	0
Highland	52%	0%	48%	63
Inverclyde	0	0	0	0
Moray	0%	0%	100%	13
North Ayrshire	42%	0%	58%	19
North Lanarkshire	0	0	0	0
Orkney	0	0	0	0
Perth & Kinross	39%	61%	0%	41
Renfrewshire	0%	0%	100%	6
Scottish Borders	0	0	0	0
Shetland	0	0	0	0
South Ayrshire	78%	0%	22%	9
South Lanarkshire	52%	48%	0%	54
Stirling	100%	0%	0%	5
West Dunbartonshire	100%	0%	0%	21
West Lothian	37%	0%	63%	35
SCOTLAND	56%	22%	22%	497

2.17 As can be seen, while at a national level Gypsies/Travellers are mostly distributed on Council/RSL sites, this differs at local authority level (often due to the availability or unavailability of types of provision). This is reflected in Aberdeenshire, Moray and Renfrewshire where 100% of Gypsy/Traveller households live on encampments, due to the fact there is either no Council/RSL or privately owned site available or, as in the case of Aberdeenshire, the Council/RSL site is seasonal and closed for the winter. In East Ayrshire, where there is a privately owned site, 71% of Gypsies/Travellers were found on encampments, the rest on the private site.

2.18 However, despite the majority of Gypsy/Traveller households on encampments in Aberdeen (58%) North Ayrshire (58%) and West Lothian (63%); all had pitches available on Council/RSL sites.

2.19 This can be contrasted with Angus, Argyll and Bute, Clackmannanshire, Dundee, East Dunbartonshire, East/Midlothian, Edinburgh, Stirling and West Dunbartonshire, where 100% of its households live on the Council/RSL site.

2.20 In Perth and Kinross 61% of Gypsy/Traveller households live on private sites, the highest percentage in Scotland. There were also high percentages of households on private sites in Falkirk (55%) and South Lanarkshire (48%).

2.21 The level of annual change in the number of Gypsy/Traveller households by region is shown in Table 2.3 along with the longer term trend since 2001.

Table 2.3: Change in Winter (January) Households by Region

Region	Number of Households		Change 2008 - 2009	Change 2001 - 2009
	2008	2009		
Highlands, Islands, Grampian	101	105	+4%	+72%
Tayside, Fife, Central	173	175	+1%	-1%
Ayrshire, Dumfries & Galloway	54	53	-2%	+29%
Lothians and Borders	34	60	+76%	+13%
West Central Scotland	93	104	+12%	-34%
TOTAL	455	497	9%	1%

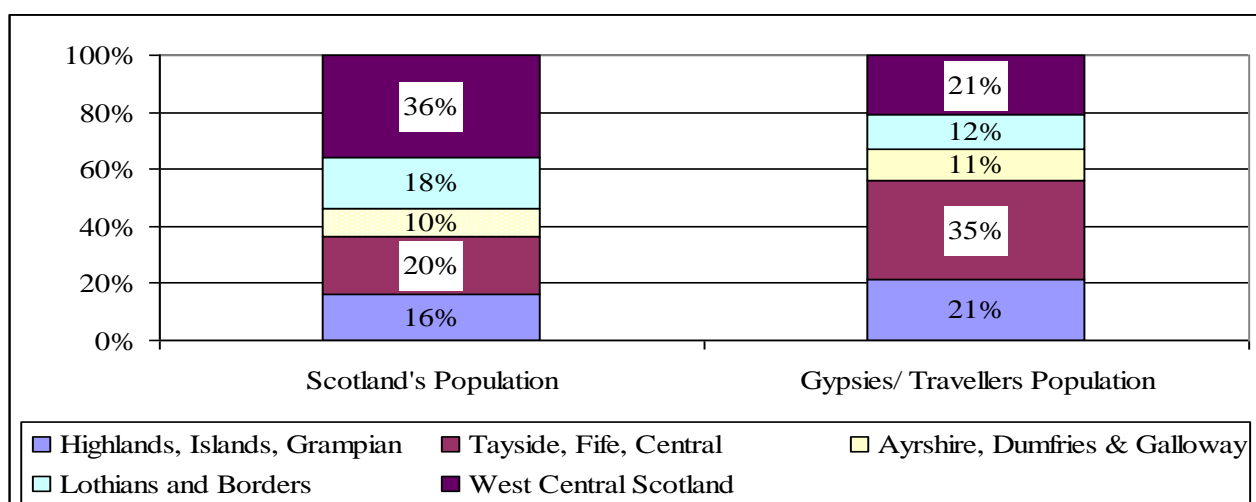
2.22 As can be seen in Table 2.3 there has been a net increase of 9% in the number of Gypsies/Travellers households from the January Count of last year. This has been reflected in all regions except for 'Ayrshire, Dumfries and Galloway' which has decreased, although only by one household. The biggest increase is in Lothians and Borders (much of which can be accounted for by the increase reported in West Lothian). Compared to January 2001, there has been an increase of just 1% in the number of households.

2.23 As with the January 2008 Count, the biggest increase in households since 2001 was recorded in Highlands, Islands and Grampian (+72%), and the biggest decrease in households from West Central Scotland (-34%).

2.24 The increasing number of Gypsies/Travellers in Highlands, Islands and Grampian is concentrated in Highland and Grampian local authorities, as the islands have very few Gypsy/Traveller households on record over the time period.

2.25 Tayside, Fife and Central (35%), the Highlands, Islands, Grampian (21%) and West Central Scotland (21%) accounted for the largest proportion of the Gypsy/Traveller population. The smallest proportion is found in Ayrshire, Dumfries and Galloway (11%) and Lothians and Borders (12%). Figure 2.3 shows how the Gypsy/Traveller population is distributed in comparison with the wider Scottish population.

Figure 2.3: Distribution of All Households and Gypsy/Traveller Households January 2009



2.26 The January 2009 Gypsy/Traveller population is distributed differently to the Scottish population as a whole. The contrast is most obvious in the distribution across 'rural' and 'urban' regions, for example West Central Scotland and Lothian and Borders account for a smaller proportion of Gypsy/Traveller households (21% and 12% respectively) than they do for the overall Scottish population (36% and 18% respectively).

2.27 A higher proportion of Gypsy/Traveller households live in Tayside, Fife and Central (35%) than households from the overall Scottish population (20%). The same is true for the Highlands, Islands, Grampian (21% Gypsies/Travellers) compared to Scotland (16%). The proportion of the Gypsy/Traveller population living in Ayrshire, Dumfries and Galloway (11%) was much the same as in the overall Scottish population (10%) living in this area.

3. COUNCIL/RSL SITES

Background

3.1 From the late 1970s through to the early 2000s, many of Scotland's local authorities developed purpose-built serviced sites for Gypsies/Travellers with the aid of grant assistance from the (then) Scottish Office. Management of these sites was undertaken by the local authorities.

3.2 A total of 37 facilities were developed over the period (34 year round and 3 seasonal) although 5 of these year round sites have since closed. Reasons for closure varied, but vandalism, low occupancy or association with family feuding/fear of intimidation among Gypsies/Travellers featured in many individual site histories.

3.3 Purpose-built Council/RSL sites are formally laid out with clearly demarcated pitches intended for a single household. Very large households may be allocated two adjacent pitches based on a single tenancy and there may also be instances of more than one household occupying a single pitch and a single tenancy. Overall, such instances tend to be rare. Pitches are usually designed to accommodate a large trailer or static caravan with space for a lorry/van although in some instances a small touring caravan is also permitted. Each pitch has its own amenity block containing facilities such as showers/baths, toilets and domestic appliances, although the type and extent of such facilities tends to vary by site.

3.4 Tenancies of year round sites are unrestricted in length and tenants are permitted leaves of absence for up to 12 weeks for reasons such as work, travelling, visiting relatives or holidaying, while retaining their tenancy.

3.5 The range of data available on Council/RSL sites and those who live on them is largely based on site management records and the knowledge of those who manage them. As a result, it is much more extensive than in the case of private sites and unauthorised encampments.

Provision

3.6 There are now 32 Council/RSL sites across Scotland; 29 are year round sites and 3 are seasonal (open summer only). In 2006, Argyll and Bute Council transferred ownership of its 3 year round sites to a RSL – Argyll Community Housing Association (ACHA) - as part of a Council housing stock transfer. This means that overall, 29 sites are now owned and managed by Councils and 3 by a RSL. A total of 24 local authorities have sites (including shared provision) and 8 do not.

3.7 East and Midlothian Councils jointly operate a site based in Dalkeith. The Site Manager is employed by East Lothian Council and also monitors encampment activity in the two areas.

3.8 At the time of the Count there were 499 available pitches – the same as July 2008, and one fewer than in January 2008. Of the 499 pitches;

- 320 (64%) were let, much the same as in January 2008 when 321 pitches were let.
- Of the let pitches over half (57%) were occupied at the time of the Count. This is about the same level of occupation as in January 2008 (55% occupied).
- 38 pitches (8%) had tenants who were temporarily absent, fewer than in January 2008, when 45 pitches (9%) had tenants who were temporarily absent.
- 103 pitches (21%) were available for let but not tenanted. This is an increase on January 2008, when 70 pitches (14%) were not tenanted.
- A total of 423 pitches (85%) were usable, an increase from the 391 pitches (78%) that were usable in January 2008.
- 76 pitches (15%) were not available for letting, significantly fewer than the 109 that were unavailable in January 2008. This may be linked to fewer sites reporting refurbishments and repairs than in 2008.

3.9 There were 9 sites - St. Christopher's in Angus, all three sites in Fife, Kentallen in Highland, Double Dykes in Perth & Kinross, Houdston in South Ayrshire, Springbank in South Lanarkshire and Dennystoun Forge in West Dunbartonshire – that reported all their pitches let on the day of the count. Three (St Christopher's, Double Dykes and Springbank) reported all their pitches to be let and occupied on the day of the count.

3.10 A further 4 sites had all of their *usable* pitches let (meaning that all pitches that were available to be let, were let). These sites were Westhaugh (Clackmannanshire), Redding (Falkirk), Spean Bridge, and Sibbald's Brae (West Lothian).

3.11 Table 3.1 below gives more information on tenancies across the various sites in Scotland.

Table 3.1: Pitch Provision and Occupancy by Local Authority Area January 2009

Local Authority Area	Site	Total Number of pitches	Available for let but not tenanted	Total Let	Let and occupied	Let with tenant temporarily absent	Empty and not available for letting
Aberdeen City	Clinterty	21	38%	43%	10%	33%	19%
Aberdeenshire	Greenbanks	20	0%	0%	0%	0%	100%
Angus	St Christopher's	18	0%	100%	100%	0%	0%
Argyll & Bute	Duncholgan	14	21%	71%	64%	7%	7%
Argyll & Bute	Ledaig	8	25%	75%	63%	13%	0%
Argyll & Bute	Torlochan	10	30%	60%	50%	10%	10%
Clackmannanshire	Westhaugh	16	0%	75%	75%	0%	25%
Dumfries & Galloway	Barlockhart	14	71%	21%	21%	0%	7%
Dumfries & Galloway	Thistlegrove	18	22%	72%	67%	6%	6%
Dundee City	Balmuir Wood	20	30%	60%	55%	5%	10%
East and Midlothian	Old Dalkeith Colliery	20	25%	50%	45%	5%	25%
East Dunbartonshire	Redhills	15	67%	33%	7%	27%	0%
Edinburgh (City of)	Duddingston	20	15%	85%	80%	5%	0%
Falkirk	Redding	15	0%	87%	80%	7%	13%
Fife	Heatherywood	18	0%	100%	72%	28%	0%
Fife	Tarvit Mill	20	0%	100%	90%	10%	0%
Fife	Thornton Wood	12	0%	100%	92%	8%	0%
Glasgow City	Oakbank Wharf	10	90%	0%	0%	0%	10%
Highland	Spean Bridge	15	0%	93%	73%	20%	7%
Highland	Kentallen	7	0%	100%	86%	14%	0%
Highland	Longman	20	5%	75%	50%	25%	20%
Highland	Newtonmore	7	0%	0%	0%	0%	100%
North Ayrshire	Redburn	16	31%	69%	69%	0%	0%
North Lanarkshire	Forrest Street	20	100%	0%	0%	0%	0%
Perth and Kinross	Double Dykes	20	0%	100%	100%	0%	0%
Scottish Borders	Innerleithen	10	0%	0%	0%	0%	100%
South Ayrshire	Houdston	8	0%	100%	88%	13%	0%
South Lanarkshire	Springbank	6	0%	100%	100%	0%	0%
South Lanarkshire	Swinhill	22	5%	91%	91%	0%	5%
Stirling	Bridgend Park	18	72%	28%	28%	0%	0%
West Dunbartonshire	Dennystoun Forge	20	0%	100%	95%	5%	0%
West Lothian	Sibbald's Brae	21	0%	48%	48%	0%	52%
SCOTLAND		499	21%	64%	57%	8%	15%

3.12 As shown in Table 3.2, there were 77 pitches unavailable for use at the time of the count. One of these was a pitch on the West Dunbartonshire site, temporarily vacated by the tenant so that accidental damage to an amenity block could be repaired. There are 37 pitches in Aberdeenshire, Highland (Newtonmore) and the Scottish Borders currently set aside for seasonal use. Another 23 pitches were described as 'unfit for use'. Specific reasons were not given but some incidents of vandalism were reported in two local authorities.

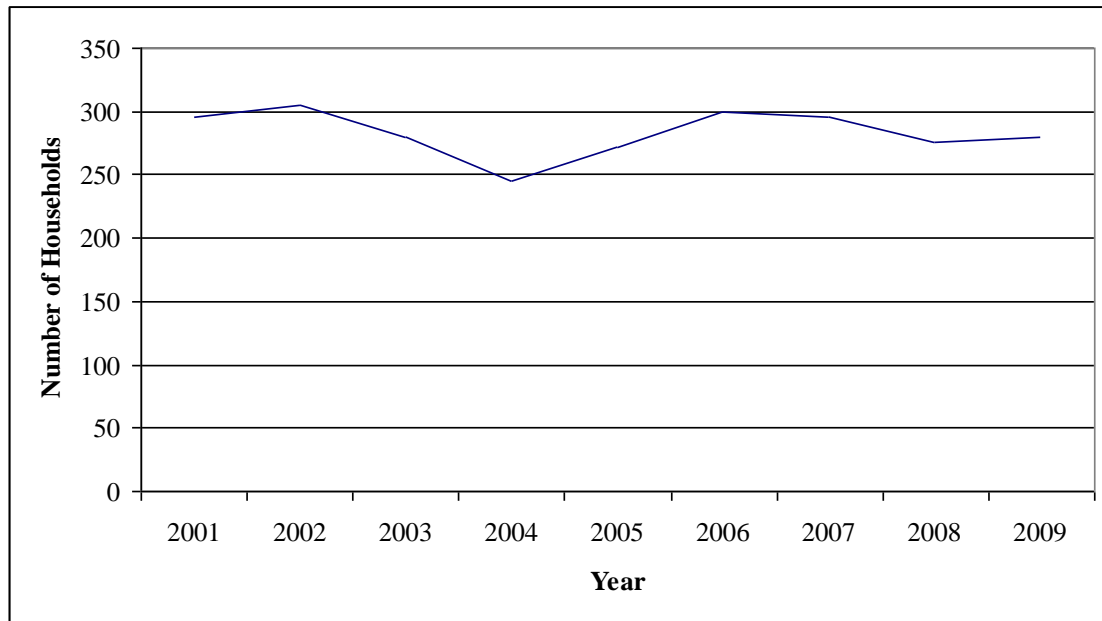
Table 3.2: Unavailable Pitches

Reason	Number	%
Seasonal use only	37	48%
Unfit for use	23	30%
Under refurbishment	4	5%
Being used for community use	3	4%
Being held for decant purposes	3	4%
Other	7	9%
Total	77	

Population

3.13 There were 897 people living on Council sites in January 2009, or 280 households. This was an increase of 4 households from January 2008, and a decrease of 15 households since 2001. Council site tenants account for 56% of the total Gypsy/Traveller population, less than in January 2008 (61%) and 2001 (60%). As Figure 3.1 shows, despite minor fluctuations this population has remained generally quite stable since 2001, with decline and recovery taking place between 2002 and 2006. The 2009 figure is very close to the average number of households of 283 from 2001 to 2009.

Figure 3.1: Number of Households on Council/RSL Sites (Winter) January 2001 to January 2009



3.14 Males accounted for 49% and females 51% of the Gypsy/Traveller population living on Council/RSL sites. The average household size across all sites was 3.2, a decrease on the household size of 3.4 recorded in January 2008, but still significantly higher than the Scottish average of 2.2. This average of 3.2 has been applied as a working assumption to the number of caravans on unauthorised encampments and private sites, to estimate the total population of Gypsies/Travellers living on sites in Scotland.

3.15 Table 3.3 compares the demographic characteristics of the Gypsy/Traveller population with those of the overall Scottish population.

Table 3.3: Demographic Comparison: Gypsies/ Travellers on Council/ RSL Sites/ Scotland as a whole

	Gypsies/Travellers		Scotland
	Number	%	%
GENDER			
Male	440	49%	48%
Female	457	51%	52%
AGE STRUCTURE			
0-4 years	135	15%	5%
5-11 years	139	15%	7%
12-15 years	77	9%	5%
16-19 years	56	6%	6%
20-59 years	419	47%	55%
Over 60 years	71	8%	22%
POPULATION BASE	897		5,168,500
AVERAGE HOUSEHOLD SIZE	3.2		2.2

Source data for Scotland (GROS 2008 Mid-year population estimates)

3.16 For Gypsies/Travellers living on Council/RSL sites the population is younger than the general Scottish population, with 45% aged under 19 years, compared to 23% of the Scottish population. The most significant difference in the population was between the under 5s, who account for 15% of the Gypsy/Traveller population compared to 5% of the total Scottish population.

3.17 The opposite is true with the older Gypsy/Traveller population. Over 60s account for only 8% of Gypsies/Travellers, compared to 22% of the general Scottish population. This is not necessarily a sign of a shorter lifespan, but could reflect a desire to move away from Council/RSL sites, possibly to housed accommodation. However, other studies of Gypsies/Travellers, such as the recent health study of Gypsies/Travellers by Sheffield University¹ and the *Accommodation Needs Assessment of Gypsies/Travellers in Grampian*² both point to a lower life expectancy and high incidences of chronic ailments among this population.

3.18 The most settled sites (with tenants over 5 years) in Table 3.5 also tend to have older populations, as was the case in St Christopher's in Angus where 26% of the population is over 60 (89% of tenants over 5 years) and Double Dykes in Perth and Kinross where 17% are over 60 (60% of tenancies over 5 years). Table 3.4 shows how the demographic profile differed between individual sites.

¹Parry et al, 2004, *The Health Status of Gypsies & Travellers in England*, Sheffield: University of Sheffield

² Craigforth, *Accommodation Needs Assessment of Gypsies/Travellers in Grampian*, 2009

Table 3.4: Council/RSL – Age Structure Profile by Site January 2009

Local Authority Area	Site	Total People	Under 5 years	5-11 years	12-15 years	16-19 years	20-59 years	60+ years
Aberdeen City	Clinterty	25	16%	28%	4%	4%	40%	8%
Aberdeenshire	Greenbanks	0	0	0	0	0	0	0
Angus	St Christophers	47	6%	9%	2%	2%	55%	26%
Argyll & Bute	Duncholgan	18	6%	11%	6%	11%	50%	17%
Argyll & Bute	Ledaig	26	19%	23%	4%	4%	50%	0%
Argyll & Bute	Torlochan	12	17%	17%	8%	17%	42%	0%
Clackmannanshire	Westhaugh	24	21%	0%	0%	8%	71%	0%
Dumfries & Galloway	Barlockhart	5	0%	0%	0%	20%	0%	80%
Dumfries & Galloway	Thistlegrove	39	15%	21%	3%	3%	44%	15%
Dundee City	Balmuir Wood	23	9%	22%	4%	4%	57%	4%
East and Midlothian	Old Dalkeith Colliery	31	16%	23%	6%	13%	39%	3%
East Dunbartonshire	Redhills	7	0%	29%	0%	0%	71%	0%
Edinburgh (City of)	Duddingston	62	15%	24%	16%	3%	39%	3%
Falkirk	Redding	53	23%	15%	6%	6%	45%	6%
Fife	Heatherywood	56	25%	14%	11%	0%	46%	4%
Fife	Tarvit Mill	39	10%	8%	10%	8%	56%	8%
Fife	Thorntonwood	36	22%	17%	19%	0%	42%	0%
Glasgow City	Oakbank Wharf	0	0	0	0	0	0	0
Highland	Spean Bridge	44	30%	9%	2%	7%	45%	7%
Highland	Kentallen	25	24%	28%	4%	0%	40%	4%
Highland	Longman	34	18%	12%	15%	3%	47%	6%
Highland	Newtonmore	0	0	0	0	0	0	0
North Ayrshire	Redburn	24	17%	21%	17%	4%	25%	17%
North Lanarkshire	Forrest Street	0	0	0	0	0	0	0
Perth and Kinross	Double Dykes	53	8%	13%	4%	15%	43%	17%
Scottish Borders	Innerleithen	0	0	0	0	0	0	0
South Ayrshire	Houdston	33	9%	18%	15%	12%	39%	6%
South Lanarkshire	Springbank	18	6%	39%	17%	6%	28%	6%
South Lanarkshire	Swinhill	78	13%	5%	6%	12%	55%	9%
Stirling	Bridgend Park	6	17%	0%	0%	0%	83%	0%
West Dunbartonshire	Dennystoun Forge	48	6%	17%	17%	10%	44%	6%
West Lothian	Sibbalds Brae	31	13%	13%	13%	0%	61%	0%
SCOTLAND		897	15%	15%	9%	6%	47%	8%

3.19 The highest number of residents aged 19 and under were reported in Edinburgh (36 residents), Swinhill in South Lanarkshire and Heatherywood in Fife (both reporting 28 residents). The Springbank site in South Lanarkshire had the highest proportion of residents aged 19 and under, accounting for 68% of the site population, or 12 out of 18 residents.

3.20 Over 60s accounted for less than 10% of the population on 25 sites and were absent from 11. The Barlockhart site in Dumfries and Galloway had the highest proportion of over 60s, accounting for 80% or 4 out of the 5 residents. Elsewhere, the more settled sites (with more tenancies lasting over 5 years) were more likely to have older populations, such as St Christopher's in Angus (12 residents over 60 or 26% of the site population) and Double Dykes in Perth and Kinross (9 residents or 17%).

3.21 This did not hold true for all sites however, as 17% of residents living on the Redburn site in North Ayrshire were over 60 and no residents had lived there for more than 5 years.

Change, Movement and Demand

3.22 Table 3.5 profiles tenancies held by Gypsies/Travellers on Council/RSL sites at the time of the January 2009 Count.

Table 3.5: Length of Tenancy Profile on Council/RSL by Local Authority Area January 2009

Local Authority Area	Total Tenancies	Under 1 year	1 year to 5 years	5 years and above
Aberdeen City	9	33%	44%	22%
Aberdeenshire	0	0	0	0
Angus	18	11%	0%	89%
Argyll & Bute	22	41%	32%	27%
Clackmannanshire	12	42%	58%	0%
Dumfries & Galloway	16	44%	50%	6%
Dundee City	12	75%	17%	8%
East and Midlothian	10	30%	50%	20%
East Dunbartonshire	5	20%	60%	20%
Edinburgh (City of)	17	35%	35%	29%
Falkirk	13	23%	69%	8%
Fife	50	26%	50%	24%
Glasgow City	0	0	0	0
Highland	36	28%	64%	8%
North Ayrshire	11	55%	45%	0%
North Lanarkshire	0	0	0	0
Perth and Kinross	20	20%	20%	60%
Scottish Borders	0	0	0	0
South Ayrshire	8	0%	25%	75%
South Lanarkshire	26	8%	50%	42%
Stirling	5	40%	20%	40%
West Dunbartonshire	20	20%	15%	65%
West Lothian	10	100%	0%	0%
SCOTLAND	320	31%	40%	29%

3.23 The most settled sites are found in Angus, (16, or 89% of households have been resident for over 10 years), Double Dykes in Perth and Kinross (12, or 60%), and Dennystoun Forge in West Dunbartonshire (13, or 65%).

3.24 Table 3.6 gives more detailed information on lengths of stay by Council/RSL tenants.

Table 3.6: Duration of tenancies on Council/RSL Sites January 2009

Local Authority Area	Total Tenancies	Up to 3 months	3-6 months	6-12 months	1-2 years	2-5 years	5-10 years	Over 10 years
Aberdeen City	9	0%	11%	22%	22%	22%	22%	0%
Aberdeenshire	0	0	0	0	0	0	0	0
Angus	18	0%	11%	0%	0%	0%	0%	89%
Argyll & Bute	22	9%	14%	18%	0%	32%	14%	14%
Clackmannanshire	12	17%	0%	25%	58%	0%	0%	0%
Dumfries & Galloway	16	13%	0%	31%	25%	25%	6%	0%
Dundee City	12	0%	0%	75%	8%	8%	0%	8%
East and Midlothian	10	20%	0%	10%	20%	30%	10%	10%
East Dunbartonshire	5	20%	0%	0%	40%	20%	20%	0%
Edinburgh (City of)	17	6%	29%	0%	12%	24%	6%	24%
Falkirk	13	23%	0%	0%	23%	46%	8%	0%
Fife	50	18%	2%	6%	30%	20%	18%	6%
Glasgow City	0	0	0	0	0	0	0	0
Highland	36	14%	8%	6%	39%	25%	6%	3%
North Ayrshire	11	27%	9%	18%	45%	0%	0%	0%
North Lanarkshire	0	0	0	0	0	0	0	0
Perth and Kinross	20	0%	20%	0%	0%	20%	0%	60%
Scottish Borders	0	0	0	0	0	0	0	0
South Ayrshire	8	0%	0%	0%	0%	25%	75%	0%
South Lanarkshire	26	0%	0%	8%	23%	27%	27%	15%
Stirling	5	0%	20%	20%	0%	20%	40%	0%
West Dunbartonshire	20	5%	0%	15%	5%	10%	25%	40%
West Lothian	10	60%	40%	0%	0%	0%	0%	0%
SCOTLAND	320	12%	8%	12%	20%	20%	13%	17%

3.25 Tenants on Council/RSL sites are, through the terms of their tenancy agreements and/or arrangements with the site manager, permitted periods of usually up to 12 weeks absence from their pitch. Un-permitted absences are when tenants either exceed the agreed time away from the site, or leave without having made any arrangements or agreements. The Count asks for information both if tenants are absent over the last 6 months, and if tenants have been away for any permitted periods during the last 6 months.

3.26 On the day of the Count 12% of Council/RSL site tenants were simply described as absent from their pitch, slightly less than the 14% who were absent on January 2008. The Clinterty site in Aberdeen City had the highest number of absences, with 7 (or 78%) of tenants away (it was also one of the sites with the highest number of permitted absences). The Longman site in Highland and Heatherywood in Fife both had 5 tenants absent, accounting for 33% and 28% of tenants respectively. At East Dunbartonshire 4 tenants were absent, but this accounted for 80% of the site's population. Table 3.7 gives more information on movement on and off of Council/RSL sites.

3.27 The number of tenants away for permitted periods over the 6 months accounted for 24% of tenancies, slightly less than the 27% who were away on January 2008. Sibbalds Brae in West Lothian had the highest number of permitted absences, with 12 tenants away for permitted periods in the 6 months before the Count. This was followed by 4 tenants (80%) resident in East Dunbartonshire and 7 tenants (78%) at Clinterty in Aberdeen taking permitted absences in the 6 months leading to the count.

Table 3.7: Absences from Council/RSL Sites, January 2009

Local Authority Area	Site	Total Let Pitches	Let with tenant absent	Tenants away for permitted periods
Aberdeen City	Clinterty	9	78%	78%
Angus	St Christophers	18	0%	17%
Argyll & Bute	Duncholgan	10	10%	30%
Argyll & Bute	Ledaig	6	17%	17%
Argyll & Bute	Torlochan	6	17%	0%
Clackmannanshire	Westhaugh	12	0%	8%
Dumfries & Galloway	Barlockhart	3	0%	0%
Dumfries & Galloway	Thistlegrove	13	8%	31%
Dundee City	Balmuir Wood	12	8%	33%
East and Midlothian	Old Dalkeith Colliery	10	10%	30%
East Dunbartonshire	Redhills	5	80%	80%
Edinburgh (City of)	Duddingston TPS	17	6%	6%
Falkirk	Redding	13	8%	15%
Fife	Heatherywood	18	28%	28%
Fife	Tarvit Mill	20	10%	20%
Fife	Thorntonwood	12	8%	50%
Glasgow City	Oakbank Wharf	0	0	0
Highland	Brackletter	14	21%	7%
Highland	Kentallen	7	14%	14%
Highland	Longman	15	33%	33%
Highland	Newtonmore	0	0	0
North Ayrshire	Redburn Traveller Site	11	0%	18%
Perth and Kinross	Double Dykes	20	0%	0%
Scottish Borders	Innerleithen	0	0	0
South Ayrshire	Houdston	8	13%	38%
South Lanarkshire	Springbank	6	0%	0%
South Lanarkshire	Swinhill	20	0%	20%
Stirling	Bridgend Park	5	0%	40%
West Dunbartonshire	Dennystoun Forge	20	5%	0%
West Lothian	Sibbalds Brae	10	0%	100%
SCOTLAND		320	12%	24%

This table shows both absences on the day of the count (Let with tenants absent) and over a six month period (Tenants away for permitted periods),

3.28 There were 81 applicants on the waiting lists for Council/RSL sites, equivalent to 19% of the available pitches. This compares to 113 applicants on waiting lists in January 2008 (29%). There were 15 sites with households on their waiting list. The longest lists were found at St Christopher's in Angus (17 or equivalent to 94% of useable pitches), and Swinhill, (16, or 76% of useable pitches), both fairly settled sites. There were also long waiting lists at Heatherywood in Fife, with 10 applicants equivalent to 56% of provision. At Springbank, there are 4 names on the waiting list, but this is equivalent to 67% of the useable pitches. Table 3.8 gives information on tenancy changes, applications and refusals for January 2009 at a local authority level only.

Table 3.8: Tenancy Profile of Council/RSL Sites January 2009

Local Authority Area	Usable Pitches	Tenancy Changes		Waiting List		Number Turned Away	
	Number	Number	%	Number	%	Number	%
Aberdeen City	17	2	12%	0	0%	0	0%
Aberdeenshire	0	0	0%	0	0%	0	0%
Angus	18	2	11%	17	94%	1	6%
Argyll & Bute	30	5	17%	1	3%	0	0%
Clackmannanshire	12	2	17%	0	0%	0	0%
Dumfries & Galloway	30	2	7%	0	0%	4	13%
Dundee City	18	0	0%	0	0%	0	0%
East and Midlothian	15	2	13%	0	0%	0	0%
East Dunbartonshire	15	2	13%	0	0%	0	0%
Edinburgh (City of)	20	6	30%	1	5%	0	0%
Falkirk	13	3	23%	7	54%	1	8%
Fife	50	10	20%	17	34%	1	2%
Glasgow City	9	0	0%	0	0%	0	0%
Highland	37	5	14%	7	19%	0	0%
North Ayrshire	16	3	19%	0	0%	0	0%
North Lanarkshire	20	0	0%	0	0%	0	0%
Perth and Kinross	20	2	10%	0	0%	1	5%
Scottish Borders	0	15	0%	0	0%	0	0%
South Ayrshire	8	0	0%	4	50%	0	0%
South Lanarkshire	27	0	0%	20	74%	3	11%
Stirling	18	0	0%	0	0%	0	0%
West Dunbartonshire	20	1	5%	6	30%	1	5%
West Lothian	10	19	190%	1	10%	0	0%
SCOTLAND	423	81	19%	81	19%	12	3%

* The tenancy changes on the Scottish Borders site are in-keeping with its function as a seasonal site.

3.29 Gypsy/Traveller families are on occasion, turned away from a site, either because it is full, they cannot supply appropriate references or available pitches are not suited to their needs. Fewer families (12) were turned away from Council/RSL sites in January 2009 than in January 2008, when 56 were turned away from Council RSL sites. The Thistlegrove site in Dumfries and Galloway turned away 4 Gypsies/Travellers, and the Swinhill site turned away 3.

3.30 There were 81 changes of tenancy reported, or 19% turnover of site provision. This is a higher percentage (14%) than January 2008, where 55 changes of tenancy were reported. This year 31% of tenants had held their pitch for less than 1 year, compared to 37% in January 2008. Tenancies of between 1 to 5 years accounted for 40% of Council/RSL tenancies (31% in January 2008) and those of more than 5 years 29% (32% in January 2008).

3.31 The majority of the 81 new tenancies recorded in January 2009 (58) came from Scotland, and 6 were known to have originated from England and Wales. It was not known where the remaining 17 tenants had originated from.

3.32 Of the 7 new tenants in Highland, Islands and Grampian, 6 had travelled from within the area. In Tayside, Fife and Central 14 out of the 19 new tenants had also travelled from within the region. West Lothian reported 19 new tenants from West Central Scotland. As West Lothian borders West Central Scotland, this may also indicate Gypsies/Travellers travelling locally.

4. PRIVATE SITES

Background

4.1 Privately owned sites are used by Gypsies/Travellers who either do not want to access Council/RSL sites, or are unable to do so. They include year round sites and those used only on a seasonal basis.

4.2 Year round private sites are often established by Gypsies/Travellers themselves and usually cater for specific families or extended families. This tends to mean they accommodate groups of people from largely the same ethnicity (for example, Romanies, Scottish Travellers etc).

4.3 Private seasonal sites can either be specifically for Gypsies/Travellers (often provided and/or managed by Gypsies/Travellers) or commercial holiday/touring stopover sites known to accept Gypsies/Travellers.

4.4 Owners of private sites are under no obligation to take part in the Twice Yearly Count. Owners of holiday/touring sites can be reluctant to disclose that they accept Gypsies/Travellers, while sites established by Gypsies/Travellers themselves tend to value their privacy. Accurate data on the number of households living on private sites and details of the sites themselves can therefore be difficult to obtain. The information gathered for the count is based on the best local intelligence held among local authority officers working most closely with Gypsies/Travellers.

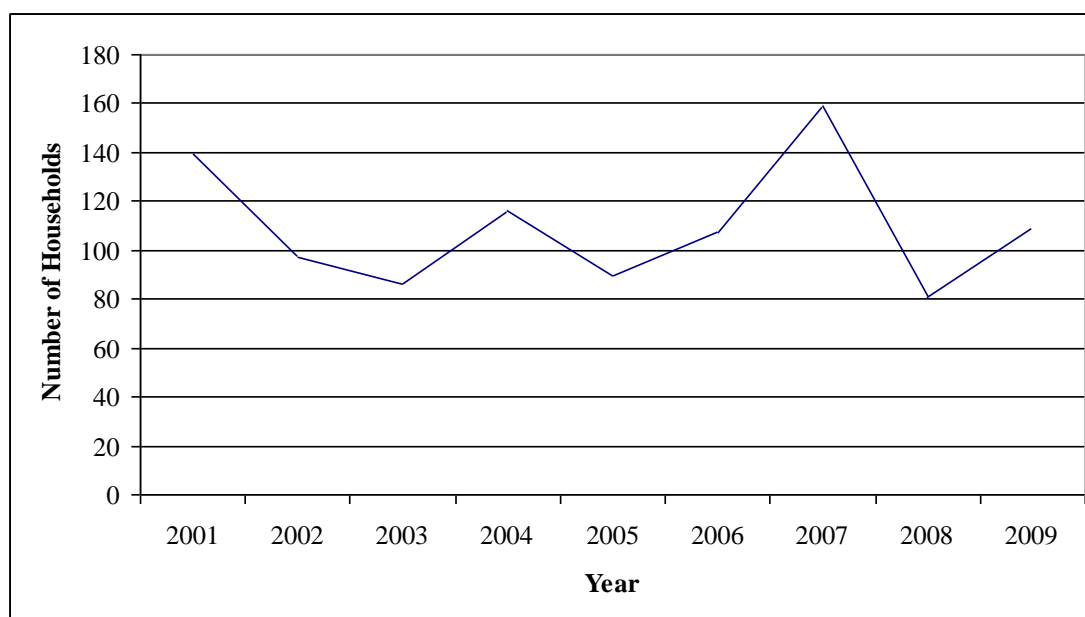
4.5 In the case of private sites, estimates of the number of households for count purposes are based on the assumption that one caravan is equivalent to one household. While experience from Council/RSL sites suggests this will not be strictly true in all cases, it will be in the vast majority. It is therefore a useful general rule to apply when estimating the total Gypsy/Traveller population.

Population and Provision

4.6 There were 109 Gypsy/Traveller households living in private sites in January 2009. This is an increase of 35% on the 81 households reported in January 2008. The 2009 figure represents a decrease of 22% households since 2001 when 139 households were reported on private sites. It should be noted however, that 2001 was the second highest year for private sites in the history of the Count.

4.7 Figure 4.1 shows the number of households living on private sites between January 2001 and January 2009.

Figure 4.1: Number of Households on Private Sites (Winter) January 2001 to ... January 2009



4.8 Methods of collecting data on private sites can vary between local authorities, and some sites are difficult to access, meaning that robust information is not always available. As much private provision comes from commercial or holiday sites where pitches are set aside for Gypsies/Travellers to use, the level of availability can change every year or be withdrawn altogether. As a result, actual trends can be hard to identify.

4.9 Where no tenants are recorded it is usually because a local authority has reported a site available to Gypsies/Travellers, but that none of them were present at the time of the Count. Sites can and do 'disappear' from records in some years as they no longer offer pitches to Gypsies/Travellers.

4.10 Table 4.1 shows households living on private sites. Fife has the largest number of households (32) living on private sites, followed by Perth & Kinross (25 households), South Lanarkshire (23 households) and Falkirk (16 households). These four have by far the highest levels, the next being Aberdeen City reporting 6 households.

Table 4.1: Households Living in Private Sites by Local Authority Area, January 2009

Local Authority Area	2008		2009	
	Short Stay	Long Stay	Short Stay	Long Stay
Aberdeen City	0	0	0	6
Aberdeenshire	0	0	0	0
Dumfries & Galloway	0	4	0	2
East Ayrshire	0	0	2	0
Falkirk	0	5	0	16
Fife	0	24	0	32
Highland	0	0	0	0
Moray	0	0	0	0
Perth & Kinross	0	25	0	25
Scottish Borders	0	0	-	-
South Lanarkshire	8	15	3	23
SCOTLAND	8	73	5	104
	81		109	

4.11 Private sites are defined as long term stay or short term stay of respectively, more or less than four weeks. There were 104 households, or 95%, staying on long term pitches in January 2009.

4.12 The biggest increase in households on private sites was recorded in Falkirk, reporting an increase of 11 households. Fife reported a rise of 8 households. Only Dumfries & Galloway showed a decrease from January 2008, by two households.

Number of Sites

4.13 Since 2001 the number of private sites recorded by the Count have fluctuated around 20.

4.14 This year there were 21 sites recorded, distributed across 10 local authorities, one fewer local authority than in 2008. Of these, 7 local authorities reported 14 sites in use on count day, two more than in January 2008.

4.15 Table 4.2 shows where private sites were located in January 2009.

Table 4.2: Private Sites at January 2009

Local Authority	Number of Sites			Total
	All year	Seasonal		
		Summer only	Winter only	
Aberdeen City	1	0	0	1
Aberdeenshire	0	2	0	2
Dumfries & Galloway	1	0	0	1
East Ayrshire	1	0	0	1
Falkirk	4	0	0	4
Fife	2	0	0	2
Highland	0	2	0	2
Moray	2	0	0	2
Perth and Kinross	3	0	0	3
South Lanarkshire	3	0	0	3
SCOTLAND	17	4	0	21

4.16 Falkirk had the largest number of private sites (4), all of which were in use at the time of the Count, an increase of two sites since January 2009. The three sites in Perth & Kinross were also all in use, while two of the three South Lanarkshire sites were in use on count day in January 2009. The number of private sites in Highland and South Lanarkshire has increased since January 2008.

4.17 Dumfries and Galloway have recorded one fewer site than in January 2008. Scottish Borders had reported one site in January 2008 but none this year.

Characteristics of Sites

4.18 Of the 21 sites, 17 were available for year round use, the rest being for summer only. There were 11 sites that were specifically for Gypsies/Travellers, 9 holiday sites that set aside pitches for use by Gypsies/Travellers, and one that was designed to cater to both. Table 4.3 gives more detailed information on the characteristics of private sites for Gypsies/Travellers.

Table 4.3: Private Sites: Availability and Usage January 2009

Local Authority	Site	Seasonality	Type	Households		Frequency
				Short Stay	Long Stay	
Aberdeen City	a	All year round	Specifically for Gypsies/ Travellers	0	6	Continuously
Aberdeenshire	a	Summer only	Holiday	0	0	Occasionally
	b	Summer only	Holiday	0	0	Occasionally
Dumfries & Galloway	a	All year round	Holiday	0	2	Continuously
East Ayrshire	a	All year round	Holiday	2	0	Occasionally
Falkirk	a	All year round	Specifically for Gypsies/ Travellers	0	2	Continuously
	b	All year round	Specifically for Gypsies/ Travellers	0	3	Continuously
	c	All year round	Specifically for Gypsies/ Travellers	0	9	Continuously
	d	All year round	Specifically for Gypsies/ Travellers	0	2	Continuously
Fife	a	All year round	Specifically for Gypsies/ Travellers	0	20	Continuously
	b	All year round	Specifically for Gypsies/ Travellers	0	12	Continuously
Highland	a	Summer only	Holiday	0	0	Not at all
	b	Summer only	Holiday	0	0	Not at all
Moray	a	All year round	Holiday	0	0	Occasionally
	b	All year round	Holiday	0	0	Occasionally
Perth and Kinross	a	All year round	Holiday	0	10	Occasionally
	b	All year round	Specifically for Gypsies/ Travellers	0	13	Continuously
	c	All year round	Specifically for Gypsies/ Travellers	0	2	Continuously
South Lanarkshire	a	All year round	Specifically for Gypsies/ Travellers	0	10	Continuously
	b	All year round	Both	0	0	Occasionally
	c	All year round	Specifically for Gypsies/ Travellers	3	13	Continuously
SCOTLAND	21			5	104	

4.19 There were 12 sites that were described as in continuous use, and a further 7 that were used occasionally. Two sites available to Gypsies/Travellers had not been used at all.

5. UNAUTHORISED ENCAMPMENTS

Background

5.1 Unauthorised encampments are set up on a typically short-term basis by Gypsies/Travellers when travelling through or visiting an area. They can also arise when families are having difficulty finding somewhere to settle, for example, on a Council/RSL or private site. In many areas, such unauthorised encampments are the only option available (where no available sites/pitches exist or where they are refused entry to private/holiday sites); for other Gypsies/Travellers they are the only option they will consider as part of their way of life.

5.2 Gypsies/Travellers based in Scotland and seasonal incomers from England, Ireland and Wales traditionally move around during the summer months. While unauthorised encampments tend to spring up more frequently in summer than in winter, there are however areas of Scotland where unauthorised encampments are reported throughout the winter.

5.3 Locations used include wasteland, industrial sites, open space areas, lay-bys, car parks and more secluded spots away from settled populations such as loch shores, river banks, remote glens and grazing pastures. Some of these are long-established 'stopping places' used by Gypsies/Travellers for decades and traditionally recognised as such, although locations of this type seem to be increasingly a thing of the past. Families often follow an annual pattern of favoured locations, stopping periodically before moving on of their own accord or as a result of a court order being raised by the landowner.

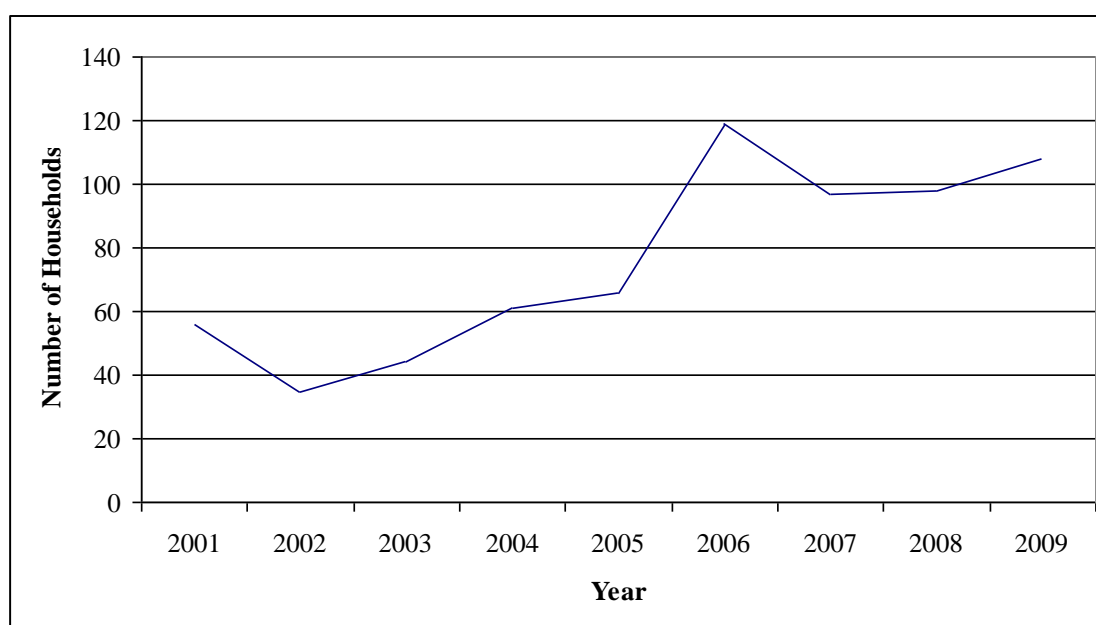
5.4 As in the case of private sites, accurate data on unauthorised encampments is difficult to obtain and varies from authority to authority. For the purposes of the Count, household estimates are based on a count of caravans on known sites within an area. Again, estimates of the number of households are based on the working assumption that one caravan is the equivalent of one household.

5.5 Unauthorised encampments can be difficult to find and are not always known to the local authority officers, as Gypsies/Travellers often set up encampments in remote locations. Other agencies such as the Police are a valuable source of information on encampment activity. As well as unauthorised encampment activity on the day of the Count, information was gathered on unauthorised encampments over the 6 month period.

Population and Unauthorised Encampment Activity

5.6 The number of households recorded on unauthorised encampments has increased since the 2001 figure of 56; by January 2009 this had risen to 108 households, an increase of 93%. The number of unauthorised encampments is nearly equal, one household less than those on private sites (which has also increased this year) and 10 households more than in January 2008. Gypsies/Travellers in unauthorised encampments account for 22% of the 2009 Gypsy/Traveller population, double the percentage recorded in 2001. Figure 5.1 gives more detailed information on households living in unauthorised encampments since January 2001.

Figure 5.1: Households Living in Unauthorised Encampments by Local Authority Area January 2009



5.7 On the day of the Count unauthorised encampment activity was concentrated in nine local authorities, one less than in January 2008. Local authorities reported 20 separate unauthorised encampments on the day of the Count, the same number as in January 2008.

5.8 The highest numbers of caravans recorded on the day of the Count were found in Highland (30 or 28% of that day's total), West Lothian (22 or 20%), Aberdeen (14 or 13%), Moray (13 or 12%) and North Ayrshire (11 or 10%). The biggest increases were in Highland (+22 households), and North Ayrshire (+11 households). There was also an increase in West Lothian of +13 households compared to January 2007, there being no available figure for 2008.

5.9 Overall, encampment activity seemed to be concentrated in northern Scotland, with no activity recorded on the islands. However, the number of encampments in northern Scotland decreased compared to January 2008. The number of households on unauthorised encampments in Aberdeenshire on the day decreased by 16 from the

number of households present in January 2008, while Aberdeen decreased by 6 households. Fife and South Ayrshire also decreased by 6 households.

5.10 Table 5.1 shows unauthorised encampment activity on the count day in January over the last five years.

**Table 5.1: Number of Households on Unauthorised Encampments (Winter)
January 2005 to January 2009**

Local Authority Area	2005	2006	2007	2008	2009
Aberdeen	0	0	4	20	14
Aberdeenshire	8	11	0	21	5
Angus	7	2	23	0	0
Argyll & Bute	0	0	0	0	0
Clackmannanshire	0	0	0	0	0
Dumfries & Galloway	0	3	0	0	0
Dundee	0	31	0	0	0
East Ayrshire	5	7	7	2	5
East Dunbartonshire	0	0	0	0	0
East/ Midlothian	0	18	9	0	0
East Renfrewshire	0	0	0	0	0
Edinburgh	8	9	0	0	0
Eilean Siar	0	0	0	0	0
Falkirk	0	0	0	0	0
Fife	23	10	3	6	0
Glasgow	0	0	0	0	0
Highland	0	4	16	8	30
Inverclyde	0	3	0	0	0
Moray	1	2	0	15	13
North Ayrshire	0	3	0	0	11
North Lanarkshire	5	5	19	0	0
Orkney	0	0	0	0	0
Perth & Kinross	4	5	5	4	0
Renfrewshire	0	0	0	0	6
Scottish Borders	0	0	0	0	0
Shetland	0	0	0	0	0
South Ayrshire	0	0	0	8	2
South Lanarkshire	5	2	2	0	0
Stirling	0	0	0	0	0
West Dunbartonshire	0	0	0	5	0
West Lothian	0	4	9	9	22
TOTAL	66	119	97	98	108

Characteristics of sites

5.11 The average unauthorised encampment size over the six month period was 4.9 caravans, although this varied between individual local authorities. On count day there were 13 encampments with 5 or fewer caravans and 18 with 10 or fewer caravans

5.12 Unauthorised encampments tended to be present for a week or longer, although there were a greater number of short term unauthorised encampments than in January 2008, and overall, the typical length of stay has decreased. There were 7 that stayed for a few days (compared to 1 in January 2008), 4 that stayed for 1 or 2 weeks (compared to 7 in January 2008) and 9 that stayed for a longer period (only one less than in Jan 2008). This may indicate a trend towards shorter term unauthorised encampments, although it may also simply be that encampments are being moved on or are leaving for a period, only to later reoccupy the same location.

5.13 Table 5.2 gives more detailed information on the characteristics of unauthorised encampments on the day of the Count.

Table 5.2: Characteristics of Unauthorised Encampments Occupied January 2009

LA	Location	At the time of the count	
		Number of Caravans	How Long Had Caravans Occupied Site?
Aberdeen City	a	7	Longer
	b	7	Longer
Aberdeenshire	a	5	Longer
East Ayrshire	a	2	Longer
	b	3	1 or 2 weeks
Highland	a	4	Longer
	b	2	Few days
	c	2	Few days
	d	2	Few days
	e	18	1 or 2 weeks
	f	2	Longer
Moray	a	5	Longer
	b	4	Longer
	c	4	Longer
North Ayrshire	a	5	1 or 2 weeks
	b	6	Few days
Renfrewshire	a	6	Few days
South Ayrshire	a	2	Few days
West Lothian	a	12	1 or 2 weeks
	b	10	Few days
SCOTLAND	20	108	

5.14 Local authorities were able to gather some information from 15 encampments on where the Gypsies/Travellers had travelled from. All of them had come from within Scotland, with 5 coming from within the local authority area, and 10 from elsewhere in the country.

5.15 Table 5.3 shows the number of locations in use on the day of the count.

Table 5.3: Encampment locations in use at time of the count.

Local Authority Area	Number of locations used as encampments	Number of locations occupied at Count
Aberdeen City	6	2
Aberdeenshire	4	1
Angus	13	0
Argyll & Bute	0	0
Clackmannanshire	2	0
Dumfries & Galloway	5	0
Dundee City	4	0
East and Midlothian	6	0
East Ayrshire	4	2
East Dunbartonshire	0	0
East Renfrewshire	0	0
Edinburgh (City of)	4	0
Eilean Siar	0	0
Falkirk	5	0
Fife	5	0
Glasgow City	1	0
Highland	17	6
Inverclyde	5	0
Moray	6	3
North Ayrshire	6	2
North Lanarkshire	6	0
Orkney	2	0
Perth and Kinross	20	0
Renfrewshire	6	1
Scottish Borders	4	0
Shetland	0	0
South Ayrshire	6	1
South Lanarkshire	0	0
Stirling	5	0
West Dunbartonshire	2	0
West Lothian	3	2
SCOTLAND	147	20

6 Month Activity

5.16 Many site managers and Gypsy/Traveller liaisons had felt that the ‘snapshot’ nature of previous Twice Yearly Counts did not represent the true level of encampments in their area and did not provide information on patterns of work and travel. Some local authorities had already been gathering this information for themselves but it could not be included in previous Count reports.

5.17 The January 2008 Count responded to these comments by introducing a new question on unauthorised encampments recorded over the 6 month period between the Counts. Although this has made more information available, there continue to be some problems in accurately recording the level of unauthorised encampments. For example, the Count records instance of caravans but not unique caravans. This means that vehicles which return to the same site on more than one instance will be recorded each time.

5.18 The 6 month Count is based on records kept by those who collect the information, usually a site manager. We are aware of many different approaches to collecting data which can affect the quality and comparability of the information. While some local authorities have always collected this data, others are only beginning to develop the mechanisms to do so.

5.19 There are also difficulties in looking at the average number of caravans recorded on locations, as a certain amount of visits are needed to get a useful and applicable average. As a result, this analysis focuses on those local authorities reporting more than 10 visits, which were Aberdeen City, Angus, Dumfries & Galloway East and Midlothian, Highland, Moray, North Ayrshire, North Lanarkshire and, Renfrewshire.

5.20 As the 6 month view is a new addition to the Count added in January 2008, comparisons can only be made over the last year. It is hoped that in time more and better quality data will accumulate and allow for longer comparisons over time.

5.21 There were 25 local authorities reporting encampment activity between July 2008 and January 2009. These local authorities were visited 271 times by 1,338 caravans. It is possible that a small number of caravans may have been counted twice as they moved between local authority areas.

5.22 Encampment activity has been much less in the previous six months (January 2008-July 2008) when there were 361 visits by 1,839 caravans. Information gathered on unauthorised encampments over the 6 month period showed that the locations shown in Table 5.1 were visited on 58 separate instances by 227 caravans.

5.23 Although this winter’s figures look much the same as the period recorded between July 2007 and January 2008, when there were 274 visits by 1,400 caravans, this is the first Count where information from West Lothian could be included. As a result this is likely to show slightly greater decrease than the figures would suggest.

5.24 There were seven Local Authorities that reported no unauthorised encampments; Argyll & Bute, East Dunbartonshire, East Renfrewshire, Eilean Siar, Shetland and South Lanarkshire. The East/Midlothian joint return reported no unauthorised encampments in Midlothian, but some in East Lothian.

5.25 Table 5.4 gives more information on the usage of locations over the 6 month period. Please note that column three in Table 5.4 does not reflect the number of times each individual encampment was occupied but the number of times encampment locations were occupied overall.

Table 5.4: Usage of unauthorised encampment locations July 2008 - January 2009

Local Authority Area	Number of locations used as encampments	Number of Times Occupied in Last 6 Months	Total Number of Caravans in Last 6 Months
Aberdeen City	6	15	97
Aberdeenshire	4	1	12
Angus	13	18	75
Argyll & Bute	0	0	0
Clackmannanshire	2	4	32
Dumfries & Galloway	5	15	50
Dundee City	4	7	29
East and Midlothian	6	10	67
East Ayrshire	4	5	16
East Dunbartonshire	0	0	0
East Renfrewshire	0	0	0
Edinburgh (City of)	4	5	27
Eilean Siar	0	0	0
Falkirk	5	5	34
Fife	5	7	12
Glasgow City	1	2	9
Highland	17	18	56
Inverclyde	5	2	15
Moray	6	42	93
North Ayrshire	6	74	386
North Lanarkshire	6	16	256
Orkney	2	0	0
Perth and Kinross	20	0	0
Renfrewshire	6	10	36
Scottish Borders	4	4	4
Shetland	0	0	0
South Ayrshire	6	1	2
South Lanarkshire	0	0	0
Stirling	5	0	0
West Dunbartonshire	2	4	11
West Lothian	3	6	19
SCOTLAND	147	271	1338

5.26 North Ayrshire had the highest number of visits over the period (74) followed by Moray (42), Highland and Angus (both 18), North Lanarkshire (16), Aberdeen City and Dumfries & Galloway (both 15). North Ayrshire also had the highest number of caravans visiting the area, recording 386 or 29% of all caravans counted over the 6 months. North Lanarkshire had the next highest number of 256 caravans or 19% of those recorded, followed by, Aberdeen City (97, or 7%), Moray (93 also 7%) and Angus (75 or 6%).

5.27 North Ayrshire reported a very large unauthorised encampment of between 150 to 200 caravans estimated onsite. To minimise double counting, we have assumed the lower estimate. These may have been Irish Travellers, who are generally known to camp in larger numbers.

5.28 In Scotland the average unauthorised encampment size remains stable at around 5 (4.9 in January 2009 and 5.1 in 2008). North Lanarkshire reports very large encampments, with an average of 16.0. The next highest was in East and Midlothian (in reality only East Lothian) with an average size of 6.7. Unauthorised encampments in Moray were small, averaging 2.2 caravans.



© Crown copyright 2009

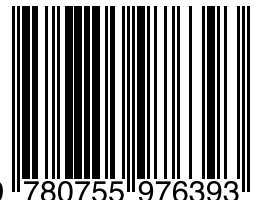
ISBN: 978-0-7559-7639-3

Scottish Government
St Andrew's House
Edinburgh
EH1 3DG

Produced for the Scottish Government by RR Donnelley B62027

Published by the Scottish Government, September 2009

ISBN 978-0 -7 559-7 639-3



9 780755 976393

w w w . s c o t l a n d . g o v . u k