

Statistical Bulletin

Education Series

Edn/B1/2009/1

ISSN 1479-7569 (*online*)

A National Statistics Publication for Scotland



PUPILS IN SCOTLAND, 2008

24th February, 2009

1. Introduction

1.1 This document contains information on pupils in publicly funded schools in Scotland, mainly derived from the latest annual pupil census which took place in September 2008. It describes the education system by providing information on the numbers of schools and pupils, the types and sizes of schools and classes they learn in, and some characteristics of the pupils.

1.2 Tables in this publication are grouped into chapters, firstly at a national level into all sector summary figures (tables 1.1-1.15), then into primary (tables 2.1-2.21), secondary (tables 3.1-3.10) and special (tables 4.1-4.9). Then local authority figures are similarly grouped (tables 5.1-5.10, 6.1-6.16, 7.1-7.13, 8.1-8.12). At the bottom of each table a note will direct you to the equivalent national or local authority table. A map of local authorities is given on page 93 and an index is also provided at the back of the publication.

2. Main Statistics

2.1 In September 2008 there were, in **total**, 681,573 pupils in 2,722 publicly funded schools in Scotland. Pupil numbers have fallen by 1.5% since 2007.

2.2 There were 370,839 pupils in 2,153 **primary** schools, 303,978 pupils in 376 **secondary** schools and 6,756 pupils in 193 **special** schools (table 1.1). The proportion of pupils in special schools continues to be about one per cent, with about 1.3% of pupils spending all or most of their time in special schools or classes.

2.3 The **average number** of pupils in a primary school was 172, a figure which has fallen each year since peaking in 1997 at 192. About 35 per cent of primaries had fewer than 100 pupils. The average number of pupils in a secondary school was 808, the lowest since 1998. About a third of secondaries had over 1,000 pupils (table 1.2)

2.4 There were 38,716 pupils who were either based in a special school or had **Additional Support Needs** in primary or secondary schools (table 1.6). In mainstream schools there were 31,960 pupils (4.7 per cent of all mainstream pupils) with a Coordinated Support Plan (CSP), an Individualised Educational Programme

(IEP) and/or with provision levels set by a Record of Needs (RoN) pre-dating the implementation of the Education (Additional Support for Learning) (Scotland) Act 2004. This compares to 29,833 pupils in 2007, a seven per cent increase. Eighty-six per cent of these pupils spent all of their time in mainstream classes (table 1.5).

2.5 All pupils who had a **RoN** prior to the Act were to be re-assessed by November 2007. Where they do not require a **CSP**, their level of provision may continue as that of their previous RoN. While there were 7,439 pupils with their RoN provision in 2007 there were still 5,250 pupils in September 2008. The number of pupils with CSPs had risen from 1,881 in 2007 to 2,694 in 2008. (table 1.6).

2.6 Of those pupils with Additional Support Needs, the most prevalent categories of **reason for support** are learning disabilities (13.2 pupils per 1,000) and social emotional and behavioural difficulties (12.0 pupils per 1,000).

2.7 Overall, 70 per cent of pupils with additional support needs were boys, the same proportion as in recent years (table 1.8).

2.8 Of those pupils whose **ethnic background** was declared (in 98% of cases), 93.1 per cent were White-UK (down from 93.7 per cent). The largest other groupings were White-other (2.2 per cent, up from 1.9 per cent), Asian-Pakistani (1.5 per cent, up from 1.4 per cent) and Mixed (0.9 per cent, unchanged). (table 1.11)

2.9 The average **class size** in primary schools was 23.2 pupils, down from 23.3 in 2007. P1 classes had the smallest average size of single stage classes at 21.1 pupils, unchanged from 2007 (table 2.11). The proportion of pupils in composite classes increased from 26.0 per cent in 2007 to 26.9 per cent (table 2.12).

2.10 The percentage of **P1-P3 pupils** who were in class sizes of 18 or less rose from 12.3 in 2007 to 13.2 in 2008 (table 2.21). If classes with two teachers are also counted, the increase is from 15.3 per cent to 15.6 per cent. In **P1** six per cent of pupils were in class sizes of more than 25, up from five per cent in 2007 (table 2.14).

2.11 There were 2,766 pupils receiving **Gaelic medium education**, up from 2,601 in 2007. A further 1,330 were taught Gaelic through the medium of Gaelic, up from 1,096 in 2007.

2.12 There were 12,391 pupils assessed or declared as **disabled** (table 1.10). There are wide variations in the extent to which pupils with disabilities had been identified in different local authorities and the information should not be considered as complete.

2.13 There were 147 different **languages** reported as the main home language. The most common after English was Polish, which moved above Punjabi and Urdu for the first time. These were followed by Cantonese, Arabic, French and Gaelic (table 1.15). Polish was the most common main home language after English in 19 authorities, with Punjabi in seven authorities (table 5.8).

2.14 There were 19,001 pupils identified as having **English as an additional language** and who were not fluent in English (an increase of 3,590). There were 4,021 who were considered "New to English". This is an increase of 426 from the 2007 figure. (table 5.9)

Table N°	Scotland	Page
<i>All Sectors</i>		
1.1	Schools and pupils, by school sector, 1996-2008	11
1.2	Size of schools, 2008	11
1.3	Pupils by urban/rural classification, 2008	12
1.4	Pupils looked after by local authority, 2008	12
1.5	Pupils with Additional Support Needs in mainstream schools, 2005-2008	12
1.6	Integration of pupils with Additional Support Needs into mainstream classes, 2008	13
1.7	Nature of support for pupils with Additional Support Needs, 2008	14
1.8	Reasons for support for pupils with Additional Support Needs, by gender, 2008	14
1.9	Pupils who are assessed or declared as disabled, 2008	15
1.10	Pupil ethnicity, 2005-2008	15
1.11	Pupil ethnicity by national identity, 2008	16
1.12	Ethnicity of asylum seekers and refugees, 2007-2008	17
1.13	Pupils receiving Gaelic medium education, 2007-2008	17
1.14	Main home language, 2008	18
1.15	Schools and pupils by school denomination, 1996-2008	18
<i>Primary</i>		
2.1	Schools and pupils in publicly funded primary schools, 1996-2008	19
2.2	Primary schools and pupils by school denomination, 1996-2008	19
2.3	Primary pupils by stage, 2001-2008	19
2.4	Primary pupils by age at 28 th February 2009 and stage and gender, as at September 2008	20
2.5	Integration of primary pupils with Additional Support Needs, by gender, 2007-2008	21
2.6	Nature of support for primary pupils with Additional Support Needs, 2008	22
2.7	Reasons for support for primary pupils with Additional Support Needs, by gender, 2008	22
2.8	Primary pupils who are assessed or declared as disabled, by gender, 2008	23
2.9	Primary pupils by ethnicity and stage, 2008	23
2.10	Average primary class sizes by type of class and stage, 2001-2008	24
2.11	Percentage of pupils in composite classes, by stage, 2001-2008	24
2.12	Number of primary classes and pupils by size and type of class, 2008	24
2.13	P1 single stage primary classes by size of class, 2007-2008	25
2.14	P2	25
2.15	P3	25
2.16	Class size of pupil in P1-P3, 2007-2008	26
2.17	P4	26
2.18	P5	26
2.19	P6	27
2.20	P7	27
2.21	Proportion of pupils in class sizes, 1997-2008	27
<i>Secondary</i>		
3.1	Schools and pupils in publicly funded secondary schools, 1996-2008	28

3.2	Secondary schools and pupils by school denomination, 1996-2008	28
3.3	Secondary pupils by stage, 2001-2008	28
3.4	Secondary pupils by age at 28 th February 2009 and stage and gender, as at September 2008	29
3.5	Integration of secondary pupils with Additional Support Needs, by gender, 2007-2008	30
3.6	Nature of support for secondary pupils with Additional Support Needs, 2008	31
3.7	Reasons for support for secondary pupils with Additional Support Needs, by gender, 2008	31
3.8	Secondary pupils who are assessed or declared as disabled, by gender, 2008	32
3.9	Secondary pupils by ethnicity and stage, 2008	32
3.10	Staying on rates of secondary pupils, 1996-2008	33

Special

4.1	Schools and pupils in publicly funded special schools, 1996-2008	34
4.2	Special schools and pupils by school denomination, 1996-2008	34
4.3	Pupils based in special schools by age at 28 th February 2009 and gender, 2008	35
4.4	Integration of pupils based in special schools, by gender, 2007-2008	35
4.5	Nature of support for pupils based in special schools with Additional Support Needs, 2008	36
4.6	Reasons for support for pupils based in special schools with Additional Support Needs, by gender, 2008	36
4.7	Pupils based in special schools who are assessed or declared as disabled, by gender, 2008	37
4.8	Pupils based in special schools by gender and mode of attendance, 2003-2008	37
4.9	Pupils based in special schools ethnicity by national identity, 2008	37

Local Authorities

All sectors

5.1	Publicly funded schools, 2000-2008	38
5.2	Pupils in publicly funded schools, 2000-2008	39
5.3	School and Pupil Numbers by Sector and Local Authority, 2008	40
5.4	Pupils who are assessed or declared as disabled, 2008	41
5.5	Looked after children in publicly funded schools, by age and local authority of residence, 2008	42
5.6	Asylum seekers and refugees in publicly funded schools, 2007-2008	43
5.7	Pupils from minority ethnic groups, 2007-2008	44
5.8	Main home language of pupils in publicly funded schools, 2008	45
5.9	Pupils with English as an additional language, 2008	46
5.10	Pupils, by Scottish Index of Multiple Deprivation, 2008	47

Primary

6.1	Publicly funded primary schools, 2000-2008	48
6.2	Pupils in publicly funded primary schools, 2003-2008	49
6.3	Primary schools and pupils by school denomination, 2008	50
6.4	Primary pupils by stage, 2008	51
6.5	Primary classes by type of class, 2008	52

6.6	Average primary class size by type of class, 2008	53
6.7	Number of pupils by stage and class size, 2008	54
6.8	Percentage of P1-P3 pupils in class sizes of 18 or less, 2004-2008	55
6.9	Looked after children in primary schools by local authority of school, 2008	56
6.10	Primary pupils with Additional Support Needs, 2008	57
6.11	Reasons for support for primary pupils with Additional Support Needs, 2008	58
6.12	Nature of support of primary pupils with Additional Support Needs, 2008	60
6.13	Primary pupils by ethnicity, 2008	61
6.14	Primary pupils who attend schools outwith their local authority of residence, 2006-2008	62
6.15	Primary pupils who attend schools but who live outwith the local authority, 2006-2008	63
6.16	Primary pupils receiving Gaelic medium education, 2008	64
<i>Secondary</i>		
7.1	Publicly funded secondary schools, 2000-2008	65
7.2	Pupils in publicly funded secondary schools, 2003-2008	66
7.3	Secondary schools and pupils by school denomination, 2008	67
7.4	Secondary pupils by stage, 2008	68
7.5	Secondary pupils with Additional Support Needs, 2008	69
7.6	Reasons for support for secondary pupils with Additional Support Needs, 2008	70
7.7	Nature of support for secondary pupils with Additional Support Needs, 2008	72
7.8	Looked after children in secondary schools by local authority of school, 2008	73
7.9	Secondary pupils by ethnicity, 2008	74
7.10	Secondary pupils who attend schools outwith their local authority of residence, 2006-2008	75
7.11	Secondary pupils who attend schools but who live outwith the local authority, 2006-2008	76
7.12	Staying on rates of secondary pupils, 2008	77
7.13	Secondary pupils receiving Gaelic medium education, 2008	78
<i>Special</i>		
8.1	Publicly funded special schools, 2000-2008	79
8.2	Pupils based in publicly funded special schools, 2003-2008	80
8.3	Special schools and pupils by school denomination, 2008	81
8.4	Pupils based in special schools by age at 28 th February 2009	82
8.5	Looked after children in special schools by local authority of school, 2008	84
8.6	Pupils based in special schools with Additional Support Needs, 2008	85
8.7	Reasons for support for pupils based in special schools with Additional Support Needs, 2008	86
8.8	Nature of support for pupils based in special schools with Additional Support Needs, 2008	88
8.9	Pupils in special schools who are assessed or declared as disabled, 2008	89
8.10	Pupils based in special schools by ethnicity, 2008	90
8.11	Pupils based in special schools who attend schools outwith their local	

	authority of residence, 2006-2008	91
8.12	Pupils based in special schools who attend schools but live outwith the local authority, 2006-2008	92
Charts		
Chart 1	Pupil numbers by sector, 1996-2008	11
Chart 2	Pupils with Additional Support Needs in mainstream schools, primary and secondary, 2003-2008	12
Chart 3	Number of pupils with Additional Support Needs, looked after by local authority or living in areas of deprivation, 2008	13
Chart 4	Pupils by ethnicity, 2008	16
Map of Local Authorities		
		93
Index		
		94

BACKGROUND NOTES

1. Sources

1.1 The information in this publication is derived mainly from the Pupil Census from 22nd September 2008 and previous years.

2 Coverage and Timing

2.1 The Pupil Census covers all **publicly funded schools** in Scotland (local authority and grant-aided). Where a school has more than one department, for example a secondary school with a primary department, these are counted as separate schools. The census of independent schools is published separately and will be available on the Scottish Government website.

<http://www.scotland.gov.uk/stats/bulletins/00647>

2.2 Schools which provide education predominantly for children with special educational needs often have pupils from a wide age range and the data collected from this sector reflects this. Where pupils attend a 'special unit' attached to a mainstream school, they are usually included in the figures for the mainstream school. Some schools and local authorities have reported pupils from 'special units' separately.

2.3 Pupils included in this census are those recorded by the school as being on the roll of the school except those in full time education at another institution (i.e. "status 01" in the data specification only).

2.4 Results of the census of teachers will be published in "Teachers in Scotland, 2008" and will be available on the Scottish Government website.

<http://www.scotland.gov.uk/schoolstats>

3 Census content

3.1 The content of the Pupil Census is considered in consultation with local authorities. The Scottish Government operates in the light of National Statistics guidelines, which restrict data collection to only the information that is required, at a level which is fit for purpose, whilst always trying to minimise the burden on data providers. Recommendations for changes to the census are made through the Scottish Exchange of Educational Data (ScotXed) network.

4 Collection methods

4.1 The information required to complete the September 2008 Pupil Census was collected electronically, through local authorities, from all publicly funded primary, secondary and special schools, as part of the ScotXed programme. The information is that stored on schools' management information systems, thus reducing the burden on schools.

4.2 ScotXed supports and promotes effective and secure data exchanges so that key partners in school education in Scotland can benefit from access to information to monitor and improve education services. Partners include local authorities, schools, the Scottish Qualifications Agency, HM Inspectorate of Education, Learning and Teaching Scotland and the Scottish Government. Further information, including specifications of the data exchanges, can be found at www.scotxed.net.

5. Definitions and Data Quality

5.1 A **class** is a group of pupils normally supervised by one teacher. The group may sometimes be supervised by more than one teacher, for example, when pupils are receiving learning support from a teacher who is not the class teacher. In this publication a class with two teachers is still counted as one class. Only pupils on the school roll have been included in the figures in order to avoid double counting of pupils.

5.2 Maximum class sizes in primary schools are as follows:

- 30 for single stage class P1-P3 (with 25 set as a norm for P1)
- 33 for single stage class P4-P7
- 25 for composite stage class

5.3 A **composite class** is a class of pupils from two or more stages.

5.4 The **ethnic background** and **national identity** categories were based generally on those collected in the 2001 population census and were agreed following consultation. Pupils and parents were given the option of not disclosing their ethnicity and in such cases pupils were *not* attributed a category. About 97.6 per cent of pupils disclosed their ethnic background, similar to in 2007.

5.5 There would appear to be inconsistency between schools and between local authorities in the reporting of **special schools** as separate identities, as well as changes over the past years. We therefore advise caution when comparing results with previous years and across local authorities. See also the 'narrative' of all changes to the list of schools,

<http://www.scotland.gov.uk/Topics/Statistics/Browse/School-Education/openingsnarrative07>

A few authorities do not have special schools and may fund places in neighbouring authorities for their pupils. The number of special schools includes 45 where there were no pupils based, but which received pupils based in other schools.

5.6 At September 2008 there was one **grant-aided mainstream** school, with primary and secondary departments, and seven **grant-aided special** schools. These schools are included in national totals, but are identified separately in the local authority level tables. In publications prior to 2003 they were included within the local authority of their location.

5.7 **Free school meal** data collected in the Pupil Census have not been published this year. As in 2007, the data on registrations appear to be incomplete for Glasgow. More complete information is collected in the February School Meals Survey. The figures collected in the annual School Meals Survey are currently used in funding calculations and in benchmarking schools.

5.8 Education authorities must have arrangements in place to identify pupils with additional support needs who require a **Co-ordinated Support Plan** and the particular additional support needs of the pupils so identified. The statutory criteria and content for a Co-ordinated Support Plan can be found in the supporting children's learning code of practice at:

<http://www.ltscotland.org.uk/inclusiveeducation/additionalsupportforlearning/index.asp>

5.9 For those pupils who had a **Record of Needs** (RoN) immediately prior to the commencement of the Education (Additional Support for Learning) (Scotland) Act 2004, on 14 November 2005, the education authorities were, within 2 years

(November 2007), to establish whether or not such pupils required a co-ordinated support plan. The provision being made for the recorded pupil is preserved as a minimum level of support unless there is a significant change in the individual's additional support needs or until the date that it is established that they require a plan, or if they do not require a plan, 2 years from the date that that is established. Such pupils are referred to in this publication under the heading "with RoN".

5.10 Individualised Educational Programmes (IEPs) are written plans setting targets that a child with additional support needs is expected to achieve. Targets should be limited in number and focus on key priorities of learning. They should be simple, clearly expressed and measurable.

5.11 Pupils may have an IEP with another record of support needs but they cannot have both a CSP and an RoN. Pupils with any combination of support needs are categorised in this publication as having **Additional Support Needs**.

5.12 Pupil census figures on **children looked after by the local authority** appear to be incomplete when compared with similar data from social work departments. They are published in Table 5.5 alongside the social work figures, as at 31st March 2008, for comparison.

5.13 The **urban/rural** classifications in Table 1.3 are defined as in the Scottish Household Survey, <http://www.scotland.gov.uk/Publications/2003/08/17898/24432>.

5.14 For the purposes of this report **denominational schools** have been restricted to those schools where a specific denomination is named. Multi- and inter-denominational schools have therefore been grouped with non-denominational schools.

6. Rounding

6.1 All percentages are rounded separately and breakdowns may consequently not sum to 100 per cent.

7. Disclosive data

7.1 Numbers less than five are generally deemed to be disclosive and hence not published. Where figures have been removed they are replaced by *. Other figures in the table may also be removed to stop a disclosive figure from being calculated from the total. However, in some cases where there are a large number of pupils in the *unknown* category or where data is believed to be incomplete i.e. ethnic background and disability respectively, there often exists a large enough amount of uncertainty for figures to be published.

7.2 Occasionally it has been preferable to swap a small number of data rather than removing figures elsewhere in the publication. Swapped data has still usually been marked as *.

8. Other data

8.1 Some further data, for example some school level data, will be made available on the Scottish Government website www.scotland.gov.uk/schoolstats.

8.2 Analysis on a more local level will also be available via the Neighbourhood Statistics website - <http://www.sns.gov.uk>.

9. Symbols

9.1 The following symbols are used:

- .. = not available
- = nil or rounds to nil
- # = not applicable
- * = disclosive data

10. General

10.1 **This is a National Statistics publication.** National Statistics are produced to high professional standards set out in the National Statistics Code of Practice. They undergo regular quality assurance reviews to ensure that they meet customer needs. They are produced free from any political interference.

10.2 The report was edited by: Paul Gona, Mal Cooke.

10.3 All tables are available on the Scottish Government website at <http://www.scotland.gov.uk/stats/bulletins/00717>

11. Enquiries

11.1. Public enquiries (non-media) about the information contained in this bulletin should be addressed to

Paul Gona,
Pupil and School Statistics, Room 1B South,
Victoria Quay, Edinburgh EH6 6QQ.
Telephone 0131 244 0183 or e-mail school.stats@scotland.gsi.gov.uk

11.2 Media enquiries about the information in this notice should be addressed to:
Tom Whittles: 0131 244 2530

24th February, 2009

Scotland: All Sectors

Table 1.1: Schools and pupils, by school sector, 1996-2008

	Schools				Pupils			
	Primary	Secondary	Special ⁽¹⁾	Total	Primary	Secondary	Special	Total
1996	2,313	403	158	2,874	441,727	316,594	8,077	766,398
1997	2,300	401	158	2,859	440,594	314,889	8,056	763,539
1998	2,291	392	185	2,868	436,979	313,204	8,231	758,414
1999	2,293	389	195	2,877	431,414	315,356	8,311	755,081
2000	2,278	389	195	2,862	425,221	317,704	8,318	751,243
2001	2,271	387	197	2,855	420,521	316,359	8,183	745,063
2002	2,258	386	191	2,835	413,713	316,903	7,981	738,597
2003	2,248	386	194	2,828	406,015	318,427	7,680	732,122
2004	2,217	386	192	2,795	398,100	317,900	7,389	723,389
2005	2,194	385	190	2,769	390,260	315,840	7,140	713,240
2006	2,184	381	190	2,755	382,783	312,979	6,975	702,737
2007	2,168	378	183	2,729	375,946	309,560	6,709	692,215
2008	2,153	376	193	2,722	370,839	303,978	6,756	681,573

(1) Changes in number of institutions officially registered as separate schools do not necessarily signify a change in provision. See background note 5.6. From 2002 onwards, figures include schools managed by local authority social work services. Local authority figures on page 40

Chart 1: Pupil numbers by sector, 1996-2008

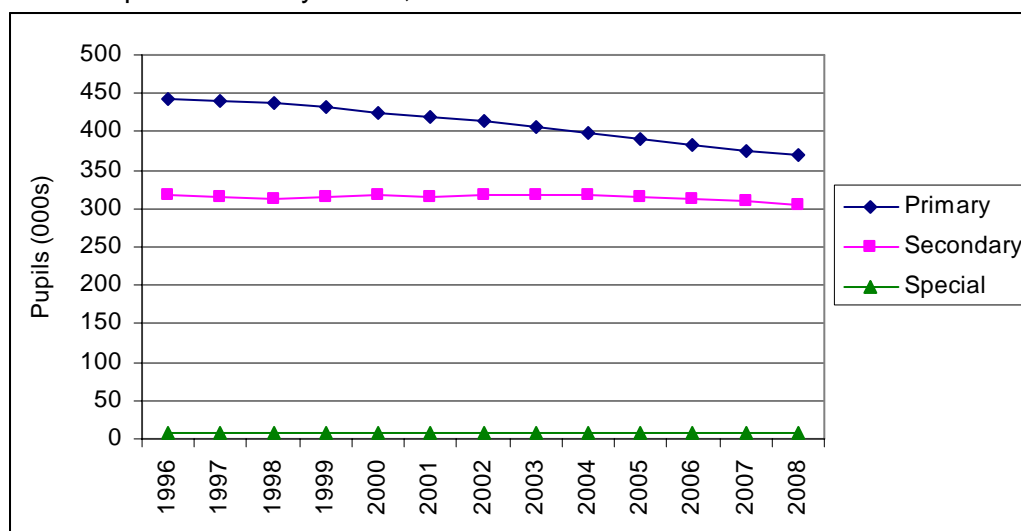


Table 1.2: Size of schools, 2008

School roll	Schools			Pupils		
	Primary	Secondary	Special ⁽¹⁾	Primary	Secondary	Special
under 50	431	14	93	11,433	398	2,149
50-99	317	8	43	22,860	548	2,992
100-199	588	13	12	89,202	1,786	1,615
200-299	445	7	-	108,192	1,769	-
300-399	284	13	-	98,078	4,453	-
400-499	72	20	-	31,401	8,975	-
500-599	9	22	-	4,885	12,166	-
600-799	6	80	-	3,984	55,763	-
800-999	1	79	-	804	71,578	-
1,000-1,199	-	75	-	-	82,094	-
1,200 and over	-	45	-	-	64,448	-

(1) There were also 45 special schools where there were no pupils based.

SCOTLAND: ALL SECTORS

Table 1.3: Pupils by urban/rural classification, 2008⁽¹⁾

	Classification of school	Classification of pupil ⁽²⁾
Scotland	679,324	676,362
Large urban areas ⁽³⁾	241,131	235,272
Other urban areas	220,826	209,452
Accessible small towns	81,281	65,520
Remote small towns	28,559	26,388
Accessible rural areas	76,751	93,575
Remote rural areas	30,776	46,155

(1) Data does not include grant aided special schools.

(2) Geographic location not identified for a further 4,915 pupils.

Table 1.4: Pupils looked after by local authority, 2008⁽¹⁾

	Number of pupils	Looked after:	
		At home	Away from home
Female	335,249	2,459	2,106
Male	346,324	3,096	2,439
Total	681,573	5,555	4,545

(1) See background note 5.12

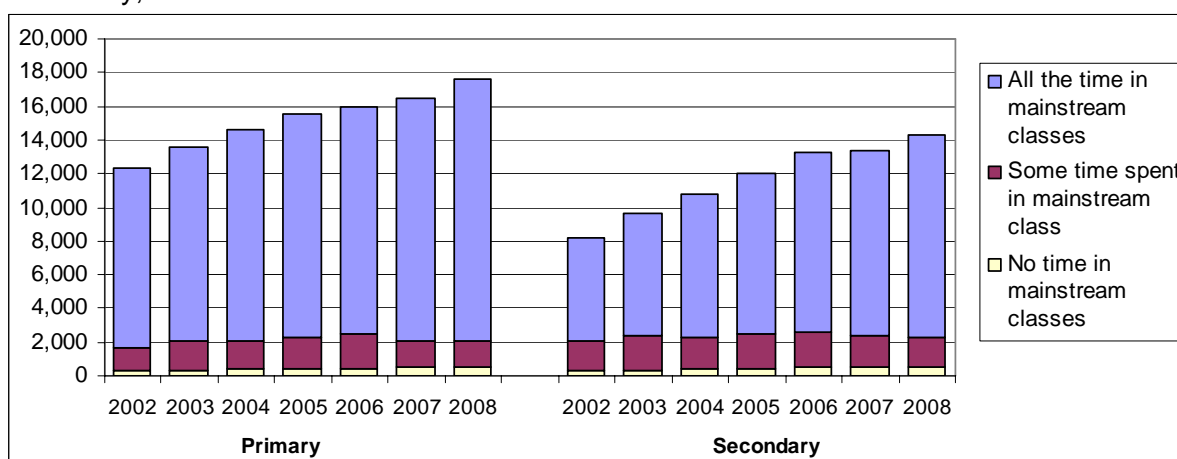
Local authority figures on pages 56, 73 and 84

Table 1.5: Pupils with Additional Support Needs in mainstream schools, 2005-2008⁽¹⁾

	Primary				Secondary			
	2005	2006	2007	2008	2005	2006	2007	2008
All the time in mainstream classes	13,246	13,487	14,330	15,537	9,542	10,661	10,990	12,079
Some time spent in mainstream class	1,852	2,001	1,674	1,573	2,027	2,067	1,844	1,702
No time in mainstream classes	423	451	474	516	450	506	523	553
Total	15,521	15,939	16,478	17,626	12,019	13,234	13,355	14,334
Percentage of school roll	4.0	4.2	4.4	4.8	3.8	4.2	4.3	4.7

(1) Data prior to 2006 shows pupils with a Record of Needs and/or an Individualised Education Programme

Chart 2: Pupils with Additional Support Needs, in mainstream schools, primary and secondary, 2002-2008⁽¹⁾



(1) Data prior to 2006 shows pupils with a Record of Needs and/or an Individualised Education Programme

SCOTLAND: ALL SECTORS

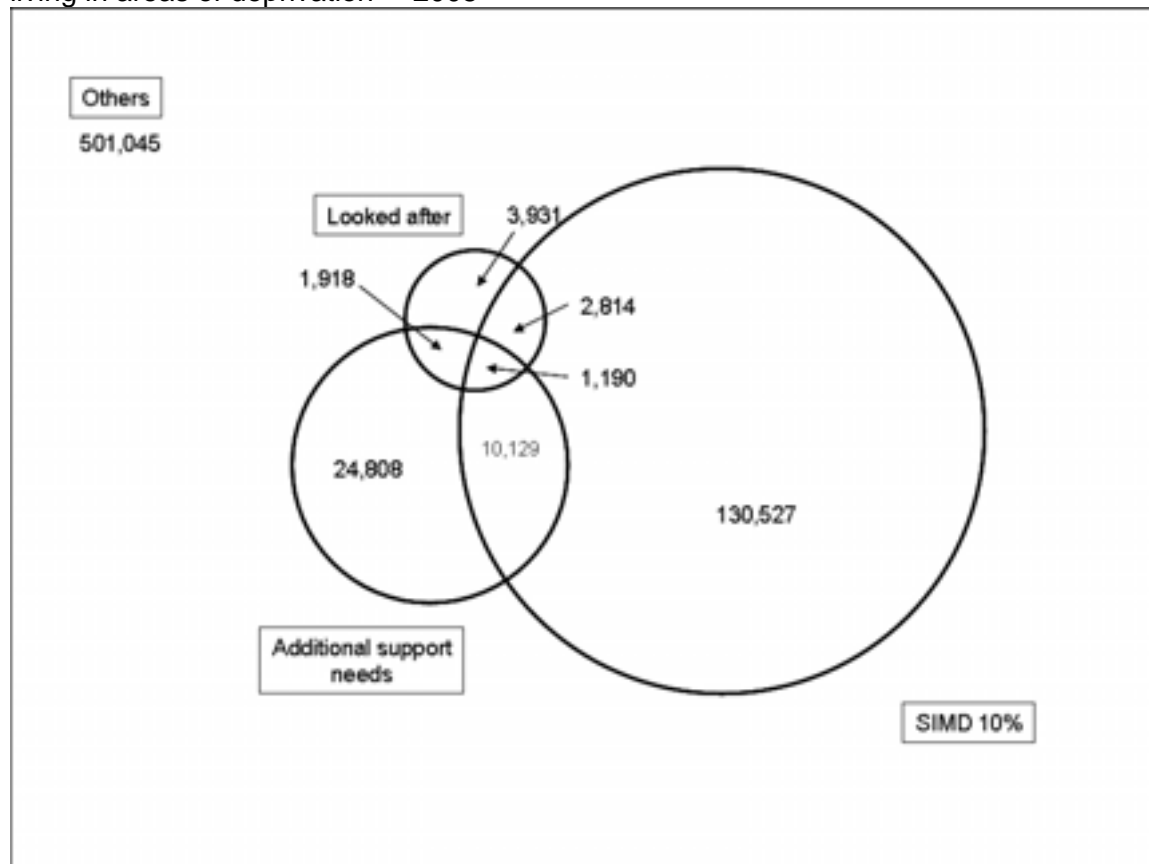
Table 1.6: Integration of pupils with Additional Support Needs into mainstream classes, 2008⁽¹⁾

Nature of attendance	All pupils in special schools and those with RoN, CSP and/or IEP in mainstream schools			
	With RoN ⁽²⁾	With CSP ⁽²⁾	With IEP only	
2007	36,510	7,439	1,881	27,190
2008	38,716	5,250	2,694	30,752
Time spent by pupils in mainstream classes				
All the time in mainstream classes	27,645	2,081	1,023	24,531
¾ or more but less than all time in mainstream classes	958	142	54	762
½ or more but less than ¾ of the time in mainstream classes	1,176	159	117	900
¼ or more but less than ½ of the time in mainstream classes	558	138	72	348
Some time, but less than ¼ of the time in mainstream classes	910	206	205	499
No time in mainstream classes	7,469	2,524	1,223	3,712

(1) See tables 2.5, 3.5 and 4.4 for separate sector tables.

(2) Irrespective of whether they have an IEP

Chart 3: Number of pupils with Additional Support Needs, looked after by local authority or living in areas of deprivation⁽¹⁾ 2008



(1) pupils living in the decile of highest area deprivation according to the Scottish Index of Multiple Deprivation Data does not include grant aided special schools or a further 4,915 pupils for whom geographic location was not identified.

Table 1.7: Nature of support for pupils with Additional Support Needs, 2008 Occurrences. Pupils with more than one support type will appear in each row.

	All pupils in special schools and those with RoN and/or IEP or CSP in mainstream schools	With	With	With IEP
		RoN ⁽¹⁾	CSP ⁽¹⁾	only
Pupils for whom nature of support is reported	37,691	5,117	2,690	29,876
Education: Additional Specialist teaching support	27,931	4,016	2,103	21,812
Education: Additional Specialist non-teaching support	18,964	2,551	1,781	14,632
Social Work services	4,111	619	740	2,752
Health services	7,195	1,265	1,501	4,429
Voluntary	452	67	117	268
Other	3,617	424	163	3,030

(1) Irrespective of whether they have an IEP
Local authority figures on pages 60, 72 and 88.

Table 1.8: Reasons for support for pupils with Additional Support Needs, by gender, 2008 Occurrences. Pupils with more than one reason for support will appear in each row.

	Female	Male	Total	Rate per 1,000 pupils		
				Female	Male	Total
Pupils for whom reason for support is reported	11,388	26,463	37,851	34.0	76.4	55.5
Learning disability	3,088	5,868	8,956	9.2	16.9	13.1
Dyslexia	1,098	3,071	4,169	3.3	8.9	6.1
Other specific learning difficulty (e.g. numeric)	969	1,947	2,916	2.9	5.6	4.3
Other moderate learning difficulty	1,965	3,679	5,644	5.9	10.6	8.3
Visual impairment	535	740	1,275	1.6	2.1	1.9
Hearing impairment	401	553	954	1.2	1.6	1.4
Deafblind	22	30	52	0.1	0.1	0.1
Physical or motor impairment	1,200	1,809	3,009	3.6	5.2	4.4
Language or speech disorder	1,347	3,068	4,415	4.0	8.9	6.5
Autistic spectrum disorder	639	4,261	4,900	1.9	12.3	7.2
Social, emotional and behavioural difficulty	1,657	6,481	8,138	4.9	18.7	11.9
Physical health problem	736	1,083	1,819	2.2	3.1	2.7
Mental health problem	84	133	217	0.3	0.4	0.3
Interrupted learning	210	325	535	0.6	0.9	0.8
English as an additional language	592	781	1,373	1.8	2.3	2.0
Looked after	455	630	1,085	1.4	1.8	1.6
More able pupil	144	145	289	0.4	0.4	0.4
Other	722	1,480	2,202	2.2	4.3	3.2

Local authority figures on pages 58, 70 and 86 .

SCOTLAND: ALL SECTORS

Table 1.9: Pupils who are assessed or declared as disabled, by gender, 2008

				Rate per 1,000 pupils		
	Female	Male	Total	Female	Male	Total
Total assessed and/or declared disabled	4,206	8,185	12,391	12.5	23.6	18.2
Assessed as disabled ⁽¹⁾	2,665	5,416	8,081	7.9	15.6	11.9
Declared as disabled but not assessed	1,541	2,769	4,310	4.6	8.0	6.3
Assessed requirement of adaptation to school provision:						
Physical adaptation	925	1,173	2,098	2.8	3.4	3.1
Curriculum adaptation	2,116	4,444	6,560	6.3	12.8	9.6
Communication adaptation	1,052	2,168	3,220	3.1	6.3	4.7
Not known/not disclosed	264	584	848	0.8	1.7	1.2

(1) Irrespective of whether a pupil is declared as disabled. Excludes grant aided special schools. Local authority figures on pages 41 and 89.

Table 1.10: Pupil ethnicity, 2005-2008⁽¹⁾

					2008		
	2004	2005	2006	2007	Female	Male	Total
White - UK	662,856	656,059	644,649	632,154	304,950	313,879	618,829
White - Other	8,022	8,926	10,357	12,566	7,070	7,331	14,401
Mixed	4,814	5,208	5,458	5,805	3,017	3,129	6,146
Asian - Indian	2,163	2,223	2,388	2,591	1,358	1,467	2,825
Asian - Pakistani	8,680	8,753	9,129	9,505	4,764	5,086	9,850
Asian - Bangladeshi	473	499	515	511	274	267	541
Asian - Chinese	2,200	2,276	2,275	2,246	1,117	1,131	2,248
Asian - Other	1,531	1,906	2,199	2,538	1,358	1,391	2,749
Black - Caribbean	105	105	110	124	57	69	126
Black - African	1,529	1,834	2,090	2,431	1,349	1,466	2,815
Black - Other	490	508	464	470	207	253	460
Occupational Traveller	176	176	207	208	110	109	219
Gypsy / Traveller	349	418	428	448	255	249	504
Other Traveller	56	76	91	105	42	50	92
Other	2,500	2,250	2,284	3,017	1,431	1,574	3,005
Not known / not disclosed	27,066	21,663	19,747	17,174	7,781	8,686	16,467
Total	723,010	712,880	702,391	691,893	335,140	346,137	681,277

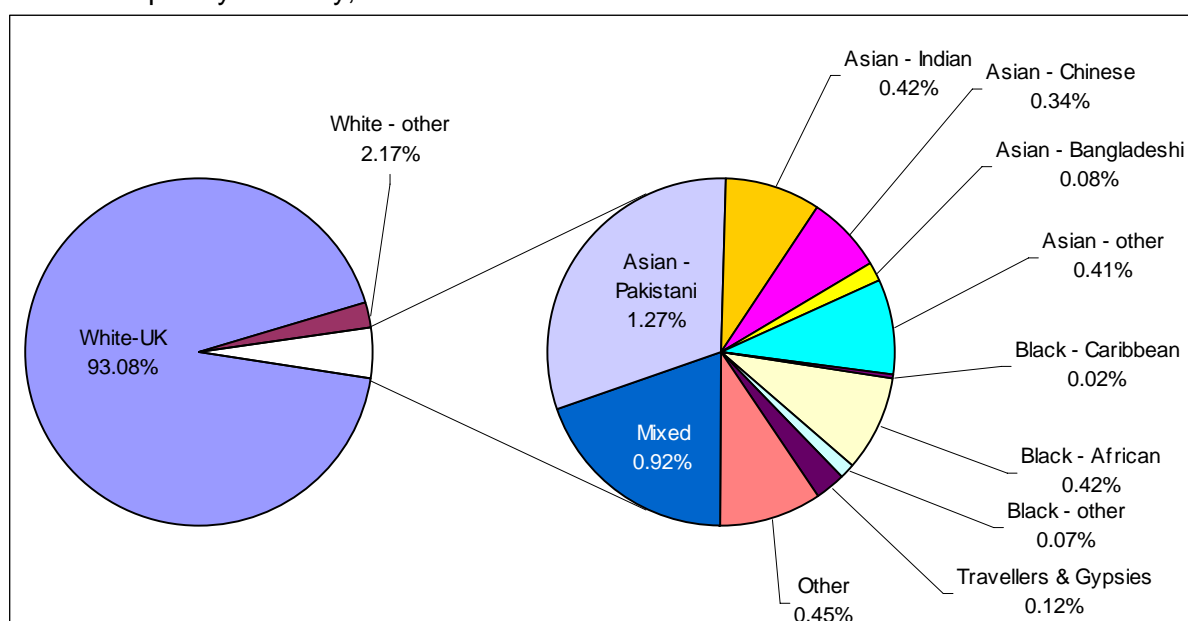
(1) Data does not include grant aided special schools.

Table 1.11: Pupil ethnicity by national identity, 2008⁽¹⁾

	Scottish	English	Northern Irish	Welsh	British	Irish	Other	Not known / not disclosed	Total
White - UK	490,253	15,786	557	558	90,522	252	1,931	18,970	618,829
White - Other	3,545	234	9	7	1,774	227	7,912	693	14,401
Mixed	3,499	253	*	15	1,732	*	430	201	6,146
Asian - Indian	758	44	*	-	833	*	914	268	2,825
Asian - Pakistani	3,142	119	*	*	4,557	9	856	1,161	9,850
Asian - Bangladeshi	138	15	-	-	228	-	125	35	541
Asian - Chinese	571	28	*	-	975	*	499	164	2,248
Asian - Other	269	35	-	*	471	*	1,693	280	2,749
Black - Caribbean	25	10	-	*	22	*	57	11	126
Black - African	130	43	-	-	336	14	1,918	374	2,815
Black - Other	90	12	-	-	102	5	207	44	460
Occupational Traveller	149	8	*	*	37	*	10	14	219
Gypsy / Traveller	377	35	6	2	55	-	10	19	504
Other Traveller	58	6	-	1	8	-	13	6	92
Other	579	30	-	*	398	*	1,196	797	3,005
Not known/not disclosed	2,747	142	*	5	1,202	*	532	11,833	16,467
Total	506,330	16,800	587	592	103,252	543	18,303	34,870	681,277

(1) Does not include grant aided special schools. Local authority figures on page 44.

Chart 4: Pupils by ethnicity, 2008⁽¹⁾



(1) Does not include grant aided special schools. Percentages of those where ethnic background is known. Ethnicity not known or not disclosed for 3 per cent of pupils. Local authority figures on pages 61, 74 and 90.

SCOTLAND: ALL SECTORS

Table 1.12: Ethnicity of asylum seekers and refugees, 2007-2008⁽¹⁾

	2007		2008	
	Asylum Seekers	Refugees	Asylum Seekers	Refugees
White - UK	10	9	6	11
White - Other	197	102	108	194
Mixed	9	7	5	13
Asian - Indian	16	5	11	13
Asian - Pakistani	243	51	170	146
Asian - Bangladeshi	*	*	*	*
Asian - Chinese	10	5	*	14
Asian - Other	319	156	175	289
Black - Caribbean	*	*	-	5
Black - African	526	287	264	605
Black - Other	62	39	26	56
Occupational Traveller	*	*	*	*
Gypsy / Traveller	-	-	*	-
Other Traveller	*	*	5	*
Other	199	87	73	133
Not known / not disclosed	54	19	56	32
Total	1,655	775	907	1,517

(1) Does not include grant aided special schools.
Local authority figures on page 43.

Table 1.13: Pupils receiving Gaelic medium education and those learning Gaelic, 2007-2008

	2007		2008	
	number	rate per 1,000 pupils	number	rate per 1,000 pupils
Exclusively through Gaelic ⁽¹⁾	739	1.1	866	1.3
All curriculum through Gaelic or bilingual ⁽¹⁾	1,283	1.9	1,286	1.9
Some curriculum through English, some through Gaelic ⁽¹⁾	579	0.8	614	0.9
Gaelic the only subject taught through Gaelic	1,096	1.6	1,330	2.0

(1) These categories are considered as Gaelic medium education
Local authority figures on pages 64 and 78.

SCOTLAND: ALL SECTORS

Table 1.14 Main home language in publicly funded schools, 2008⁽¹⁾

Language	Number	Language	Number	Language	Number
<i>Number of languages</i>	147	Malayalam	406	Swahili/Kiswahili	208
		Tagalog/Filipino	406	Latvian	199
<i>Number of pupils⁽¹⁾</i>		Russian	363	Dutch	150
English	653,731	Turkish	358	Pashto	150
Polish	4,677	Chinese (Mandarin)	323	Bahasa Malaysia	142
Punjabi	4,622	Slovak	318	Hungarian/Magyar	139
Urdu	4,207	Scots	306	Kurdish	139
Cantonese	1,506	Hindi	292	Thai	135
Arabic	1,403	Lithuanian	290	Shona	134
French	788	Italian	265	Sign Language	131
Gaelic (Scottish)	681	Portuguese	263	Not known/ not disclosed	2,219
Bengali/Bangala	539	Farsi/Iranian/Persian	260		
German	496	Somali	246		
Spanish	463	Tamil	243	Other ⁽²⁾	2,234

(1) Data includes 1,859 pupils who are not based in their reporting school and hence are likely to be double counted.

(2) Languages in the 'Other' category are: Afrikaans, Akan/Twi, Albanian, Algerian, Amharic, Armenian, Azerbaijani, Bahasa Indonesia, Bajuni, Balochi, Basque, Bemba, Bosnian, Bulgarian, Burmese, Catalan, Cebuano/Visayan, Chechen, Coorge, Creole, Croatian, Czech, Danish, Dari, Doric, Duri, Edo/Bini, Esan, Estonian, Ewe, Faroese, Fijian, Finnish, Flemish, Frisian, Gaelic (Irish), Georgian, Greek, Gujarati, Gurani, Hakka, Hausa, Hebrew, Herero, Hokkien, Ibo/Igbo, Icelandic, Idoma, Isekiri, Japanese, Jju, Jola, Jula, Kagoro, Kalabari, Kannada, Kashmiri, Katchi/Kutchi, Khmer, Kikuyu, Kinyarwanda, Kirundi, Konkani, Korean, Lingala, Luganda, Malagasy, Maltese, Mandinka, Marathi, Memmoni, Mirpuri, Moldavian, Mongolian, Ndebele, Nepalese, Northern Sotho, Norwegian, Nyanja/Chichewa/Chewa, Romanian, Romany, Rugika, Serbian, Serbo-Croatian, Setswana, Shanghainese, Silheti/Sylheti, Sindhi, Sinhalese, Slovene, Soninke, Sourashtra, Swati, Swedish, Telugu, Tibetan, Tigrinya, Tiv, Tonga, Tongan, Tswana, Tulu, Turkmani, Ukrainian, Urhobo, Uzbek, Vietnamese, Welsh, Wolof, Xhosa, Yoruba, Zulu.

Local authority figures on page 45.

Table 1.15: Schools and pupils by school denomination, 1997-2008

	Schools			Pupil roll		
	Non-denominational	Roman Catholic	Other denomination ⁽¹⁾	Non-denominational	Roman Catholic	Other denomination
1997	2,419	421	19	629,842	132,728	969
1998	2,424	418	26	625,974	131,367	1,073
1999	2,429	417	31	622,920	130,998	1,163
2000	2,415	416	31	619,617	130,493	1,133
2001	2,408	414	33	614,722	129,188	1,153
2002	2,393	409	33	609,567	127,887	1,143
2003	2,388	411	29	604,837	126,295	990
2004	2,360	405	28	597,843	124,588	958
2005	2,339	401	29	589,263	122,873	1,104
2006	2,360	391	4	581,174	121,171	392
2007	2,337	388	4	572,280	119,550	385
2008	2,333	385	4	562,965	118,189	419

(1) The decrease in the number of schools and pupils in the "Other" denomination is due to inter-denominational schools being categorised as non-denominational from 2006. See background note 5.14

Local authority figures on pages 50, 67 and 81.

Scotland: Primary

Table 2.1: Schools and pupils in publicly funded primary schools, 1996-2008

	Schools	Female	Male	Total
1996	2,313	441,727
1997	2,300	440,594
1998 ⁽¹⁾	2,291	213,276	222,430	436,979
1999	2,293	211,168	220,246	431,414
2000	2,278	208,066	217,155	425,221
2001	2,271	205,642	214,879	420,521
2002 ⁽¹⁾	2,258	202,432	211,279	413,713
2003	2,248	198,725	207,290	406,015
2004	2,217	195,038	203,062	398,100
2005	2,194	191,099	199,161	390,260
2006	2,184	187,394	195,389	382,783
2007	2,168	184,122	191,824	375,946
2008	2,153	181,579	189,260	370,839

(1) There were 1,273 pupils in 1998 and 2 pupils in 2002 for whom gender was not recorded. Local authority figures on pages 48 and 49.

Table 2.2: Primary schools and pupils by school denomination, 1996-2008

	Schools			Pupil roll		
	Non-denominational	Roman Catholic	Other denomination ⁽¹⁾	Non-denominational	Roman Catholic	Other denomination
1996	1,959	350	4	362,783	78,576	368
1997	1,946	350	4	362,041	78,211	342
1998	1,937	350	4	359,217	77,408	354
1999	1,939	350	4	354,735	76,338	341
2000	1,925	349	4	349,639	75,270	312
2001	1,918	349	4	345,647	74,571	303
2002	1,910	344	4	340,074	73,340	299
2003	1,899	345	4	334,171	71,564	280
2004	1,875	339	3	327,857	70,008	235
2005	1,854	336	4	321,073	68,790	397
2006	1,851	329	4	314,616	67,775	392
2007	1,837	327	4	308,939	66,622	385
2008	1,824	325	4	304,455	65,965	419

(1) See background note 5.14 Local authority figures on page 50.

Table 2.3: Primary pupils by stage, 2001-2008

	2001	2002	2003	2004	2005	2006	2007	2008
P1	56,771	56,374	55,434	53,439	52,292	51,247	50,591	52,106
P2	57,722	56,672	56,351	55,451	53,280	52,222	51,374	50,552
P3	58,709	57,607	56,710	56,472	55,407	53,403	52,332	51,288
P4	59,918	58,576	57,690	56,801	56,474	55,351	53,475	52,254
P5	61,658	59,827	58,629	57,794	56,763	56,438	55,343	53,412
P6	63,377	61,419	59,880	58,558	57,643	56,609	56,285	55,149
P7	62,366	63,037	61,277	59,585	58,401	57,513	56,546	56,078

(1) In 2002 there were 201 pupils and in 2003 there were 44 pupils for whom stage was not recorded. Local authority figures on page 51.

SCOTLAND: PRIMARY

Table 2.4a: Primary pupils (all) by age at 28th February 2009 and stage, as at September 2008⁽¹⁾

	P1	P2	P3	P4	P5	P6	P7
4	80						
5	47,317	74					
6	4,655	45,791	93				
7	12	4,666	46,197	104			
8		20	4,979	47,298	110		
9			19	4,844	48,716	110	
10				8	4,573	50,620	109
11					13	4,406	51,852
12						13	4,093
13							19

(1) There were 48 pupils for whom age was outwith the shown range.

Table 2.4b: Primary pupils (female) by age at 28th February 2009 and stage, as at September 2008⁽¹⁾

	P1	P2	P3	P4	P5	P6	P7
4	49						
5	23,650	52					
6	1,705	23,040	66				
7	2	1,711	23,256	74			
8		6	1,864	23,685	80		
9			7	1,761	24,447	73	
10				2	1,631	25,244	69
11					2	1,564	26,038
12						7	1,463
13							9

(1) There were 22 pupils for whom age was outwith the shown range.

Table 2.4c: Primary pupils (male) by age at 28th February 2009 and stage, as at September 2008⁽¹⁾

	P1	P2	P3	P4	P5	P6	P7
4	31						
5	23,667	22					
6	2,950	22,751	27				
7	10	2,955	22,941	30			
8		14	3,115	23,613	30		
9			12	3,083	24,269	37	
10				6	2,942	25,376	40
11					11	2,842	25,814
12						6	2,630
13							10

(1) There were 26 pupils for whom age was outwith the shown range.

SCOTLAND: PRIMARY

Table 2.5a: Integration of primary pupils (total) with Additional Support Needs, 2007-2008

Nature of attendance	RoN, CSP and/or IEP	with RoN ⁽¹⁾	with CSP ⁽¹⁾	with IEP only
2007	16,478	1,504	913	14,061
2008	17,626	866	1,168	15,592
Time spent by pupils in mainstream classes				
All the time in mainstream classes	15,537	606	759	14,172
¾ or more but less than all time in mainstream classes	195	14	23	158
½ or more but less than ¾ of the time in mainstream classes	615	46	70	499
¼ or more but less than ½ of the time in mainstream classes	324	41	43	240
Some time, but less than ¼ of the time in mainstream classes	439	75	114	250
No time in mainstream classes	516	84	159	273

(1) Irrespective of whether they have an IEP
Local authority figures on page 57.

Table 2.5b: Integration of primary pupils (female) with Additional Support Needs, 2007-2008

Nature of attendance	RoN, CSP and/or IEP	with RoN ⁽¹⁾	with CSP ⁽¹⁾	with IEP only
2007	4,760	413	308	4,039
2008	5,193	235	361	4,597
Time spent by pupils in mainstream classes				
All the time in mainstream classes	4,706	176	252	4,278
¾ or more but less than all time in mainstream classes	52	2	9	41
½ or more but less than ¾ of the time in mainstream classes	158	14	22	122
¼ or more but less than ½ of the time in mainstream classes	80	11	12	57
Some time, but less than ¼ of the time in mainstream classes	116	20	39	57
No time in mainstream classes	81	12	27	42

(1) Irrespective of whether they have an IEP

Table 2.5c: Integration of primary pupils (male) with Additional Support Needs, 2007-2008

Nature of attendance	RoN, CSP and/or IEP	with RoN ⁽¹⁾	with CSP ⁽¹⁾	with IEP only
2007	11,718	1,091	605	10,022
2008	12,433	631	807	10,995
Time spent by pupils in mainstream classes				
All the time in mainstream classes	10,831	430	507	9,894
¾ or more but less than all time in mainstream classes	143	12	14	117
½ or more but less than ¾ of the time in mainstream classes	457	32	48	377
¼ or more but less than ½ of the time in mainstream classes	244	30	31	183
Some time, but less than ¼ of the time in mainstream classes	323	55	75	193
No time in mainstream classes	435	72	132	231

(1) Irrespective of whether they have an IEP

SCOTLAND: PRIMARY

Table 2.6: Nature of support for primary pupils with Additional Support Needs, 2008 Occurrences. Pupils with more than one support type will appear in each row.

Pupils for whom reason for support is reported	with RoN, CSP and/or IEP	with RoN ⁽¹⁾	with CSP ⁽¹⁾	with IEP
		17,296	859	1,165
Education: Additional Specialist teaching support	12,417	584	849	10,986
Education: Additional Specialist non-teaching support	8,570	568	823	7,181
Social Work services	1,571	62	201	1,310
Health services	3,791	268	694	2,831
Voluntary	188	9	46	133
Other	1,718	61	72	1,585

(1) Irrespective of whether they have an IEP
Local authority figures on page 60.

Table 2.7: Reasons for support for pupils with Additional Support Needs, by gender, 2008 Occurrences. Pupils with more than one reason will appear in each row.

Pupils for whom reason for support is reported	Rate per 1,000 pupils					
	Female	Male	Total	Female	Male	Total
	5,101	12,232	17,333	28.1	64.6	46.7
Learning disability	869	1,651	2,520	4.8	8.7	6.8
Dyslexia	415	1,067	1,482	2.3	5.6	4.0
Other specific learning difficulty (e.g. numeric)	564	1,110	1,674	3.1	5.9	4.5
Other moderate learning difficulty	1,018	2,049	3,067	5.6	10.8	8.3
Visual impairment	173	271	444	1.0	1.4	1.2
Hearing impairment	167	218	385	0.9	1.2	1.0
Deafblind	13	15	28	0.1	0.1	0.1
Physical or motor impairment	451	719	1,170	2.5	3.8	3.2
Language or speech disorder	772	1,856	2,628	4.3	9.8	7.1
Autistic spectrum disorder	276	1,943	2,219	1.5	10.3	6.0
Social, emotional and behavioural difficulty	685	2,971	3,656	3.8	15.7	9.9
Physical health problem	302	475	777	1.7	2.5	2.1
Mental health problem	19	56	75	0.1	0.3	0.2
Interrupted learning	105	180	285	0.6	1.0	0.8
English as an additional language	368	501	869	2.0	2.6	2.3
Looked after	237	321	558	1.3	1.7	1.5
More able pupil	52	95	147	0.3	0.5	0.4
Other	330	666	996	1.8	3.5	2.7

Local authority figures on page 58.

SCOTLAND: PRIMARY

Table 2.8: Primary pupils who are assessed or declared as disabled, by gender, 2008

	Female	Male	Total	Rate per 1,000 pupils		
				Female	Male	Total
Total assessed and/or declared as disabled	1,329	2,474	3,803	7.3	13.1	10.3
Assessed as disabled ⁽¹⁾	894	1,782	2,676	4.9	9.4	7.2
Declared as disabled but not assessed	435	692	1,127	2.4	3.7	3.0
Assessed requirement of adaptation to school provision:						
Physical adaptation	379	437	816	2.1	2.3	2.2
Curriculum adaptation	608	1,301	1,909	3.3	6.9	5.1
Communication adaptation	336	715	1,051	1.9	3.8	2.8
Not known/not disclosed	115	270	385	0.6	1.4	1.0

(1) Irrespective of whether a pupil is declared as disabled

Table 2.9: Primary pupils by ethnicity and stage, 2008

	P1	P2	P3	P4	P5	P6	P7
White – UK	42,770	43,868	45,626	47,035	48,842	50,962	52,039
White – Other	1,690	1,527	1,354	1,465	1,182	1,018	1,039
Mixed	568	551	562	525	535	518	524
Asian – Indian	282	314	287	245	245	225	205
Asian – Pakistani	829	896	868	794	779	777	784
Asian – Bangladeshi	48	40	50	53	57	47	45
Asian – Chinese	153	165	161	200	154	173	160
Asian – Other	270	272	261	240	255	227	200
Black – Caribbean	14	12	12	11	12	8	10
Black – African	308	313	256	257	244	226	200
Black – Other	30	45	42	44	31	50	28
Occupational Traveller	10	18	10	22	28	26	18
Gypsy / Traveller	45	62	53	53	48	55	48
Other Traveller	4	5	11	7	6	10	11
Other	475	354	254	168	171	171	192
Total known	47,496	48,442	49,807	51,119	52,589	54,493	55,503
Not known/disclosed	4,610	2,110	1,481	1,135	823	656	575

Local authority figures on page 61.

SCOTLAND: PRIMARY

Table 2.10: Average primary class sizes by type of class and stage, 2001-2008⁽¹⁾

Class Type	2001	2002	2003	2004	2005	2006	2007	2008
All	24.3	24.0	23.7	23.9	23.6	23.6	23.3	23.2
Single stage	25.7	25.5	25.1	25.3	25.1	25.1	24.8	24.7
Composite	20.6	20.2	20.1	20.2	19.9	20.0	20.0	20.0
Single stage classes by stage								
P1	23.7	23.5	23.2	23.2	23.1	22.9	21.1	21.1
P2	24.8	24.6	24.3	24.6	24.2	24.2	24.2	23.6
P3	25.3	25.3	24.6	25.1	25.1	25.0	24.8	24.7
P4	26.5	26.3	25.9	26.1	26.0	25.9	26.0	26.1
P5	26.7	26.5	26.2	26.5	26.3	26.4	26.1	26.3
P6	26.7	26.6	26.3	26.2	26.2	26.3	26.2	26.3
P7	26.2	26.0	25.7	25.9	25.4	25.6	25.6	25.6

(1) see background note 5.1.

Local authority figures on pages 53 and 54.

Table 2.11: Percentage of pupils in composite classes, by stage, 2001-2008⁽¹⁾

	2001	2002	2003	2004	2005	2006	2007	2008
P1	15.8	16.9	16.8	17.2	16.7	17.9	19.1	18.9
P2	26.4	27.4	26.1	27.4	27.6	28.8	31.5	33.3
P3	25.8	27.0	25.7	27.2	27.6	28.4	29.1	31.2
P4	24.6	26.5	27.1	27.3	27.0	28.1	28.6	29.8
P5	23.8	25.1	26.4	26.8	26.3	27.4	28.3	29.1
P6	24.1	25.3	25.8	26.6	26.8	27.7	27.9	28.3
P7	15.7	16.9	17.1	17.6	17.1	18.3	18.0	18.6
all pupils	22.7	23.6	23.6	24.3	24.2	25.2	26.0	26.9

(1) See background note 5.1.

Table 2.12: Number of primary classes and pupils by size and type of class, 2008⁽¹⁾

Class size	Single stage classes				Composite stage classes			
	Classes		Pupils		Classes		Pupils	
	Number	%	Number	%	Number	%	Number	%
Total	10,992		271,083		4,993		99,756	
0 – 18	1,131	10.3	16,936	6.2	1,420	28.4	18,849	18.9
19 – 20	884	8.0	17,277	6.4	606	12.1	11,839	11.9
21 – 25	4,040	36.8	94,008	34.7	2,948	59.0	68,541	68.7
26 – 30	3,763	34.2	105,296	38.8	18	0.4	481	0.5
31 – 33	1,146	10.4	36,516	13.5	-	-	-	-
>33	28	0.3	1,050	0.4	1	0.0	46	0.0
Of which: Classes over 25 taught by 2 teachers								
26 – 30	71	1.9	1,997	1.9	-	-	-	-
31-33	27	2.4	869	2.4	-	-	-	-
>33	24	85.7	906	86.3	1	100.0	46	100.0

(1) See background note 5.1.

SCOTLAND: PRIMARY

Table 2.13 Class size of pupils in P1, 2007-2008⁽¹⁾

Class size	2007			2008		
	Single stage classes	Composite classes	%	Single stage classes	Composite classes	%
Total	40,940	9,651		42,269	9,837	
0 – 18	6,272	2,820	18.0	7,102	3,053	19.5
19 – 20	6,859	1,480	16.5	6,484	1,532	15.4
21 – 25	25,562	5,307	61.0	25,906	5,131	59.6
26 – 30	1,527	44	3.1	2,127	93	4.3
31 – 33	477	-	0.9	290	-	0.6
>33	243	-	0.5	360	28	0.7
Of which: Classes over 25 taught by 2 teachers						
26 – 30	584	22	38.6	487	62	24.7
>30	720	-	100.0	615	28	94.8

(1) See background note 5.1.

Table 2.14: Class size of pupils in P2, 2007-2008⁽¹⁾

Class size	2007			2008		
	Single stage classes	Composite classes	%	Single stage classes	Composite classes	%
Total	35,210	16,164		33,722	16,830	
0 – 18	2,258	3,258	10.7	2,087	3,488	11.0
19 – 20	2,323	2,275	9.0	2,709	2,217	9.7
21 – 25	12,123	10,552	44.1	16,122	11,034	53.7
26 – 30	18,191	79	35.6	12,605	73	25.1
31 – 33	126	-	0.2	164	-	0.3
>33	189	-	0.4	35	18	0.1
Of which: Classes over 25 taught by 2 teachers						
26 – 30	392	8	2.2	377	52	3.4
>30	252	-	80.0	199	18	100.0

(1) See background note 5.1.

Table 2.15: Class size of pupils in P3, 2007-2008⁽¹⁾

Class size	2007			2008		
	Single stage classes	Composite classes	%	Single stage classes	Composite classes	%
Total	37,109	15,223		35,311	15,977	
0 – 18	1,771	2,552	8.3	1,806	2,751	8.9
19 – 20	1,839	1,882	7.1	1,819	1,603	6.7
21 – 25	11,643	10,670	42.6	11,453	11,562	44.9
26 – 30	21,200	119	40.7	19,845	61	38.8
31 – 33	508	-	1.0	346	-	0.7
>33	148	-	0.3	42	-	0.1
Of which: Classes over 25 taught by 2 teachers						
26 – 30	649	23	3.2	441	45	2.4
>30	374	-	57.0	106	-	27.3

(1) See background note 5.1.

SCOTLAND: PRIMARY

Table 2.16 Class size of pupils in P1-P3, 2007-2008⁽¹⁾

Class size	2007			2008		
	Single stage classes	Composite classes	%	Single stage classes	Composite classes	%
Total	113,259	41,038		111,302	42,644	
0 – 18	10,301	8,630	12.3	10,995	9,292	13.2
19 – 20	11,021	5,637	10.8	11,012	5,352	10.6
21 – 25	49,328	26,529	49.2	53,481	27,727	52.8
26 – 30	40,918	242	26.7	34,577	227	22.6
31 – 33	1,111	-	0.7	800	-	0.5
>33	580	-	0.4	437	46	0.3
Of which: Classes over 25 taught by 2 teachers						
26 – 30	1,625	53	4.1	1,305	159	4.2
>30	1,346	-	79.6	920	46	13.2

(1) See background note 5.1.

Table 2.17: Class size of pupils in P4, 2007-2008⁽¹⁾

Class size	2007			2008		
	Single stage classes	Composite classes	%	Single stage classes	Composite classes	%
Total	38,181	15,294		36,692	15,562	
0 – 18	1,322	2,502	7.2	1,259	2,465	7.1
19 – 20	1,246	1,591	5.3	1,274	1,681	5.7
21 – 25	9,753	11,111	39.0	9,263	11,379	39.5
26 – 30	18,668	90	35.1	17,780	37	34.1
31 – 33	7,088	-	13.3	7,074	-	13.5
>33	104	-	0.2	42	-	0.1
Of which: Classes over 30 taught by 2 teachers						
31-33	190	-	2.7	33	-	0.5
>33	70	-	67.3	42	-	100.0

(1) See background note 5.1.

Table 2.18: Class size of pupils in P5, 2007-2008⁽¹⁾

Class size	2007			2008		
	Single stage classes	Composite classes	%	Single stage classes	Composite classes	%
Total	39,666	15,677		37,866	15,546	
0 – 18	1,340	2,436	6.8	1,216	2,366	6.7
19 – 20	1,564	1,639	5.8	1,058	1,705	5.2
21 – 25	9,865	11,520	38.6	9,257	11,428	38.7
26 – 30	18,648	82	33.8	16,566	47	31.1
31 – 33	8,160	-	14.7	9,735	-	18.2
>33	89	-	0.2	34	-	0.1
Of which: Classes over 30 taught by 2 teachers						
31-33	321	-	3.9	159	-	1.6
>33	89	-	100.0	34	-	100.0

(1) See background note 5.1.

SCOTLAND: PRIMARY

Table 2.19: Class size of pupils in P6, 2007-2008⁽¹⁾

Class size	2007			2008		
	Single stage classes	Composite classes	%	Single stage classes	Composite classes	%
Total	40,599	15,686		39,553	15,596	
0 – 18	1,356	2,445	6.8	1,198	2,545	6.8
19 – 20	1,440	1,427	5.1	1,570	1,736	6.0
21 – 25	10,189	11,650	38.8	9,360	11,214	37.3
26 – 30	18,003	164	32.3	17,904	101	32.6
31 – 33	9,433	-	16.8	9,394	-	17.0
>33	178	-	0.3	127	-	0.2
Of which: Classes over 30 taught by 2 teachers						
31-33	226	-	2.4	63	-	0.7
>33	110	-	61.8	93	-	73.2

(1) See background note 5.1.

Table 2.20: Class size of pupils in P7, 2007-2008⁽¹⁾

Class size	2007			2008		
	Single stage classes	Composite classes	%	Single stage classes	Composite classes	%
Total	46,341	10,205		45,670	10,408	
0 – 18	2,550	2,154	8.3	2,268	2,181	7.9
19 – 20	2,334	1,054	6.0	2,363	1,365	6.6
21 – 25	12,173	6,890	33.7	12,647	6,793	34.7
26 – 30	18,564	107	33.0	18,469	69	33.1
31 – 33	10,427	-	18.4	9,513	-	17.0
>33	293	-	0.5	410	-	0.7
Of which: Classes over 30 taught by 2 teachers						
31-33	63	-	0.6	96	-	1.0
>33	190	-	64.8	335	-	81.7

(1) See background note 5.1.

Table 2.21: Percentage of pupils by class size⁽¹⁾, 1997 to 2008

	P1 to P3 pupils			P4 to P7 pupils		
	18 or fewer	19 to 25	more than 25	25 or fewer	26 to 30	more than 30
1997	7	40	53	45	35	20
1998	8	42	50	45	35	20
1999	9	45	46	46	35	19
2000	10	47	44	46	35	19
2001	10	49	41	46	35	19
2002	9	49	41	47	35	18
2003	10	49	41	48	35	17
2004	10	49	41	48	36	17
2005	11	50	39	49	35	16
2006	11	51	38	50	35	15
2007	12	60	28	50	34	16
2008	13	63	23	51	33	17

(1) A small proportion of classes with more than 18 pupils have two teachers and so a pupil teacher ratio of 18 or less. However these are not counted in this table. See background note 5.1

Scotland: Secondary**Table 3.1: Schools and pupils in publicly funded secondary schools, 1996-2008**

	Schools	Female	Male	Total
1996 ⁽¹⁾	403	157,820	157,916	316,594
1997 ⁽¹⁾	401	157,040	157,014	314,889
1998 ⁽¹⁾	392	156,043	156,118	313,204
1999	389	157,166	158,190	315,356
2000	389	158,075	159,629	317,704
2001	387	157,134	159,225	316,359
2002	386	157,469	159,434	316,903
2003	386	158,407	160,020	318,427
2004	386	158,540	159,360	317,900
2005	385	157,425	158,415	315,840
2006	381	156,220	156,759	312,979
2007	378	154,715	154,845	309,560
2008	376	151,555	152,423	303,978

(1) There were 858 pupils in 1996, 835 pupils in 1997 and 1,043 pupils in 1998 for whom gender was not recorded. Local authority figures on pages 65 and 66.

Table 3.2: Secondary schools and pupils by school denomination, 1996-2008

	Schools			Pupil roll		
	Non-denominational	Roman Catholic	Other denomination ⁽¹⁾	Non-denominational	Roman Catholic	Other denomination
1996	338	65	-	262,746	53,848	-
1997	337	64	-	260,841	54,048	-
1998	331	61	-	259,722	53,482	-
1999	329	60	-	261,187	54,169	-
2000	329	60	-	262,978	54,726	-
2001	328	59	-	262,214	54,145	-
2002	327	59	-	262,792	54,111	-
2003	327	59	-	264,120	54,307	-
2004	327	59	-	263,726	54,174	-
2005	327	58	-	262,121	53,719	-
2006	325	56	-	259,919	53,060	-
2007	323	55	-	256,946	52,614	-
2008	322	54	-	252,064	51,914	-

(1) See background note 5.14
Local authority figures on page 67.

Table 3.3: Secondary pupils by stage, 2001-2008⁽¹⁾

	2001	2002	2003	2004	2005	2006	2007	2008
S1	59,341	61,572	62,398	60,748	58,879	57,646	56,778	55,740
S2	61,133	59,275	61,673	62,436	60,817	58,876	57,814	56,924
S3	62,175	61,447	59,718	62,112	62,732	61,193	59,203	58,033
S4	59,998	61,035	60,446	58,871	61,190	61,697	60,351	58,452
S5	47,320	46,198	47,198	46,715	45,440	47,469	47,892	46,866
S6	26,392	27,372	26,993	27,018	26,782	26,098	27,522	27,963

(1) In 2002 there were four pupils and in 2003 there was one pupil for whom stage was not recorded. Local authority figures on page 68.

SCOTLAND: SECONDARY

Table 3.4a: Secondary pupils (total) by age at 28th February 2009 and stage, as at September 2008⁽¹⁾

	S1	S2	S3	S4	S5	S6
11	129					
12	51,873	162				
13	3,705	52,927	221			
14	30	3,804	53,699	224		
15		31	4,058	54,437	265	
16			51	3,747	44,262	210
17				41	2,304	26,325
18					31	1,407
19						19

(1)There were 16 pupils for whom age was outwith the shown range.

Table 3.4b: Secondary pupils (female) by age at 28th February 2009 and stage, as at September 2008⁽¹⁾

	S1	S2	S3	S4	S5	S6
11	68					
12	25,795	97				
13	1,387	26,338	145			
14	12	1,469	26,901	145		
15		15	1,601	27,182	165	
16			20	1,485	22,807	126
17				15	953	14,197
18					10	598
19						9

(1)There were 15 pupils for whom age was outwith the shown range.

Table 3.4c: Secondary pupils (male) by age at 28th February 2009 and stage, as at September 2008⁽¹⁾

	S1	S2	S3	S4	S5	S6
11	61					
12	26,078	65				
13	2,318	26,589	76			
14	18	2,335	26,798	79		
15		16	2,457	27,255	100	
16			31	2,262	21,455	84
17				26	1,351	12,128
18					21	809
19						10

(1)There was 1 pupil for whom age was outwith the shown range.

SCOTLAND: SECONDARY

Table 3.5a: Integration of secondary pupils (total) with Additional Support Needs, 2007-2008

Nature of attendance	with RoN, CSP			
	and/or IEP	with RoN ⁽¹⁾	with CSP ⁽¹⁾	with IEP
2007	13,355	2,719	327	10,309
2008	14,334	1,935	478	11,921
Time spent by pupils in mainstream classes				
All the time in mainstream classes	12,079	1,475	261	10,343
$\frac{3}{4}$ or more but less than all time in mainstream classes	755	124	31	600
$\frac{1}{2}$ or more but less than $\frac{3}{4}$ of the time in mainstream classes	515	102	46	367
$\frac{1}{4}$ or more but less than $\frac{1}{2}$ of the time in mainstream classes	144	57	13	74
Some time, but less than $\frac{1}{4}$ of the time in mainstream classes	288	71	52	165
No time in mainstream classes	553	106	75	372

(1) Irrespective of whether they have an IEP
Local authority figures on page 69.

Table 3.5b: Integration of secondary pupils (female) with Additional Support Needs, 2007-2008

Nature of attendance	with RoN, CSP			
	and/or IEP	with RoN ⁽¹⁾	with CSP ⁽¹⁾	with IEP
2007	4,009	816	97	3,096
2008	4,336	551	140	3,645
Time spent by pupils in mainstream classes				
All the time in mainstream classes	3,642	399	72	3,171
$\frac{3}{4}$ or more but less than all time in mainstream classes	214	39	8	167
$\frac{1}{2}$ or more but less than $\frac{3}{4}$ of the time in mainstream classes	178	36	15	127
$\frac{1}{4}$ or more but less than $\frac{1}{2}$ of the time in mainstream classes	45	14	3	28
Some time, but less than $\frac{1}{4}$ of the time in mainstream classes	98	26	20	52
No time in mainstream classes	159	37	22	100

(1) Irrespective of whether they have an IEP

Table 3.5c: Integration of secondary pupils (male) with Additional Support Needs, 2007-2008

Nature of attendance	with RoN, CSP			
	and/or IEP	with RoN ⁽¹⁾	with CSP ⁽¹⁾	with IEP
2007	9,346	1,903	230	7,213
2008	9,998	1,384	338	8,276
Time spent by pupils in mainstream classes				
All the time in mainstream classes	8,437	1,076	189	7,172
$\frac{3}{4}$ or more but less than all time in mainstream classes	541	85	23	433
$\frac{1}{2}$ or more but less than $\frac{3}{4}$ of the time in mainstream classes	337	66	31	240
$\frac{1}{4}$ or more but less than $\frac{1}{2}$ of the time in mainstream classes	99	43	10	46
Some time, but less than $\frac{1}{4}$ of the time in mainstream classes	190	45	32	113
No time in mainstream classes	394	69	53	272

(1) Irrespective of whether they have an IEP

SCOTLAND: SECONDARY

Table 3.6: Nature of support for secondary pupils with Additional Support Needs, 2008 Occurrences. Pupils with more than one support type will appear in each row.

	with RoN, CSP and/or IEP	with RoN ⁽¹⁾	with CSP ⁽¹⁾	with IEP
Pupils for whom nature of support is reported	13,718	1,819	477	11,422
Education: Additional Specialist teaching support	9,945	1,378	379	8,188
Education: Additional Specialist non-teaching support	7,368	1,047	356	5,965
Social Work services	1,152	125	135	892
Health services	1,261	228	210	823
Voluntary	164	17	29	118
Other	1,521	204	35	1,282

(1) Irrespective of whether they have an IEP
Local authority figures on page 72.

Table 3.7: Reasons for support for secondary pupils with Additional Support Needs, 2008 Occurrences. Pupils with more than one reason will appear in each row

				Rate per 1,000 pupils		
	Female	Male	Total	Female	Male	Total
Pupils for whom reason for support is reported	4,184	9,614	13,798	27.6	63.1	45.4
Learning disability	787	1,515	2,302	5.2	9.9	7.6
Dyslexia	679	1,993	2,672	4.5	13.1	8.8
Other specific learning difficulty (e.g. numeric)	365	781	1,146	2.4	5.1	3.8
Other moderate learning difficulty	684	1,115	1,799	4.5	7.3	5.9
Visual impairment	123	180	303	0.8	1.2	1.0
Hearing impairment	141	189	330	0.9	1.2	1.1
Deafblind	6	9	15	0.0	0.1	0.0
Physical or motor impairment	281	466	747	1.9	3.1	2.5
Language or speech disorder	184	456	640	1.2	3.0	2.1
Autistic spectrum disorder	179	1,299	1,478	1.2	8.5	4.9
Social, emotional and behavioural difficulty	730	2,579	3,309	4.8	16.9	10.9
Physical health problem	207	285	492	1.4	1.9	1.6
Mental health problem	48	59	107	0.3	0.4	0.4
Interrupted learning	90	135	225	0.6	0.9	0.7
English as an additional language	193	233	426	1.3	1.5	1.4
Looked after	157	233	390	1.0	1.5	1.3
More able pupil	91	49	140	0.6	0.3	0.5
Other	337	685	1,022	2.2	4.5	3.4

Local authority figures on page 70

SCOTLAND: SECONDARY

Table 3.8: Secondary pupils who are assessed or declared as disabled, by gender, 2008

				Rate per 1,000 pupils		
	Female	Male	Total	Female	Male	Total
Total assessed and/or declared as disabled	1,778	3,417	5,195	11.7	22.4	17.1
Assessed as disabled ⁽¹⁾	876	1,728	2,604	5.8	11.3	8.6
Declared as disabled but not assessed	902	1,689	2,591	6.0	11.1	8.5
Assessed requirement of adaptation to school provision:						
Physical adaptation	227	298	525	1.5	2.0	1.7
Curriculum adaptation	654	1,344	1,998	4.3	8.8	6.6
Communication adaptation	204	399	603	1.3	2.6	2.0
Not known/not disclosed	119	229	348	0.8	1.5	1.1

(1) Irrespective of whether a pupil is declared as disabled

Table 3.9: Secondary pupils by ethnicity and stage, 2008

	S1	S2	S3	S4	S5	S6
White – UK	51,870	52,842	53,574	54,457	43,645	25,643
White – Other	994	1006	956	862	694	467
Mixed	479	457	416	409	320	220
Asian – Indian	204	187	183	160	143	121
Asian – Pakistani	710	713	745	689	628	457
Asian – Bangladeshi	40	36	37	32	26	21
Asian – Chinese	157	172	191	205	189	153
Asian – Other	183	184	209	174	150	104
Black – Caribbean	6	13	11	9	4	4
Black – African	186	203	174	182	141	96
Black – Other	36	39	30	36	32	14
Occupational Traveller	17	18	18	14	11	6
Gypsy / Traveller	38	31	28	23	10	2
Other Traveller	5	8	10	6	5	2
Other	157	165	450	175	146	109
Total known	55,082	56,074	57,032	57,433	46,144	27,419
Not known / disclosed	658	850	1,001	1,019	722	544

Local authority figures on page 74.

SCOTLAND: SECONDARY

Table 3.10: Staying-on rates of secondary pupils, 1996-2008⁽¹⁾

	Female S3-S5			Male S3-S5			All pupils S3-S5		
	S3-S5	Christmas	S3-S6	S3-S5	Christmas	S3-S6	S3-S5	Christmas	S3-S6
1996	76.5	66.9	42.2
1997	76.5	67.1	41.6
1998	79.5	71.9	..	72.6	63.2	..	76.0	67.5	42.2
1999	81.3	73.1	47.4	74.0	64.0	39.6	77.6	68.4	43.4
2000	81.2	72.2	48.8	74.7	64.0	41.2	77.9	68.1	44.9
2001	80.1	71.4	47.3	74.6	64.1	40.5	77.3	67.7	43.9
2002	79.2	71.4	48.0	72.4	63.4	41.6	75.7	67.3	44.7
2003	79.5	71.7	48.0	72.4	62.8	40.7	75.9	67.1	44.2
2004	79.9	72.0	48.0	72.3	62.6	39.1	76.0	67.2	43.5
2005	79.6	71.1	47.9	72.7	62.6	39.4	76.1	66.8	43.6
2006	80.0	71.8	48.1	73.0	63.2	39.5	76.4	67.4	43.7
2007	79.8	71.8	49.0	73.0	63.7	39.8	76.3	67.6	44.3
2008	79.8	..	48.5	73.5	..	40.8	76.6	..	44.6

(1) The S5 stage staying-on rates are based on S3 pupils 2 years earlier and S6 rates on S3 pupils 3 years earlier.

Post Christmas staying-on rates are calculated as a percentage of the post Christmas S5 roll divided by the S3 roll 2 years earlier. The post Christmas roll in S5 is calculated by subtracting the number of first term leavers in S5 from the September S5 roll.

1996-98 stage roll data used to calculate staying-on rates excludes pupils in special units. 1999-07 stage roll data used to calculate staying-on rates includes pupils in special units.

Local authority figures on page 77.

Scotland: Special

Table 4.1: Schools and pupils in publicly funded special schools, 1996-2008

	Schools	Female	Male	Total
1996	158	8,077
1997	158	2,872	5,184	8,056
1998	185	2,885	5,346	8,231
1999	195	2,871	5,440	8,311
2000	195	2,847	5,471	8,318
2001	197	2,755	5,428	8,183
2002 ⁽¹⁾	191	2,605	5,300	7,981
2003	194	2,531	5,149	7,680
2004	192	2,381	5,008	7,389
2005	190	2,302	4,838	7,140
2006	190	2,225	4,750	6,975
2007	183	2,132	4,577	6,709
2008	193	2,115	4,641	6,756

(1) There were 76 pupils in 2002 for whom gender was not known.
Local authority figures on pages 79 and 80.

Table 4.2: Special schools and pupils by school denomination, 1996-2008

	Schools			Pupil roll		
	Non-denominational	Roman Catholic	Other denomination ⁽¹⁾	Non-denominational	Roman Catholic	Other denomination
1996	137	7	14	6,975	461	641
1997	136	7	15	6,960	469	627
1998	156	7	22	7,035	477	719
1999	161	7	27	6,998	491	822
2000	161	7	27	7,000	497	821
2001	162	6	29	6,861	472	850
2002	156	6	29	6,701	436	844
2003	162	7	25	6,546	424	710
2004	160	7	25	6,260	406	723
2005	158	7	25	6,069	364	707
2006	184	6	-	6,639	336	-
2007	177	6	-	6,395	314	-
2008	187	6	-	6,446	310	-

(1) The decrease in the number of schools and pupils in "Other denomination" is due to inter-denominational schools being categorised as non-denominational from 2006. See background note 5.14.
Local authority figures on page 81.

SCOTLAND: SPECIAL

Table 4.3: Pupils based in special schools by age at 28th February 2009 and gender, 2008

Age	All pupils			Pupils with RoN, CSP and/or IEP		
	Female	Male	Total	Female	Male	Total
4	*	*	6	*	*	6
5	73	145	218	72	145	217
6	92	233	325	92	233	325
7	105	232	337	104	231	335
8	122	269	391	122	269	391
9	123	296	419	123	296	419
10	126	311	437	126	311	437
11	151	388	539	151	388	539
12	168	434	602	168	430	598
13	183	448	631	183	447	630
14	224	480	704	224	479	703
15	227	502	729	226	501	727
16	242	448	690	242	447	689
17	187	312	499	187	312	499
18	78	107	185	78	107	185
19	5	25	30	5	25	30
Other	*	*	14	*	*	6
All ages	2,115	4,641	6,756	2,109	4,627	6,736

Local authority figures on page 82.

Table 4.4: Integration of pupils based in special schools, by gender, 2007-2008

Nature of attendance	All pupils	Female	Male
2007	6,709	2,132	4,577
2008	6,756	2,115	4,641
Time spent by pupils in mainstream classes			
All the time in mainstream classes	21	13	8
¾ or more but less than all time in mainstream classes	8	-	8
½ or more but less than ¾ of the time in mainstream classes	46	20	26
¼ or more but less than ½ of the time in mainstream classes	90	38	52
Some time, but less than ¼ of the time in mainstream classes	183	53	130
No time in mainstream classes	6,408	1,991	4,417

SCOTLAND: SPECIAL

Table 4.5: Nature of support for pupils based in special schools with Additional Support Needs, 2008

Occurrences. Pupils with more than one support type will appear in each row.

Pupils for whom nature of support is reported	Pupils based in special schools			
		with RoN ⁽¹⁾	with CSP ⁽¹⁾	with IEP
Pupils for whom nature of support is reported	6,677	2,439	1,048	3,182
Education: Additional Specialist teaching support	5,567	2,054	875	2,638
Education: Additional Specialist non-teaching support	3,024	936	602	1,486
Social Work services	1,386	432	404	550
Health services	2,141	769	597	775
Voluntary	100	41	42	17
Other	378	159	56	163

(1) Irrespective of whether they have an IEP
Local authority figures on page 88.

Table 4.6: Reasons for support for pupils based in special schools with Additional Support Needs, by gender, 2008

Occurrences. Pupils with more than one reason for support will appear in each row.

Pupils for whom reason for support is reported	Rate per 1,000 pupils			Rate per 1,000 pupils		
	Female	Male	Total	Female	Male	Total
Pupils for whom reason for support is reported	2,103	4,617	6,720	994.3	994.8	994.7
Learning disability	1,432	2,702	4,134	677.1	582.2	611.9
Dyslexia	*	*	15	*	*	2.2
Other specific learning difficulty (e.g. numeric)	40	56	96	18.9	12.1	14.2
Other moderate learning difficulty	263	515	778	124.3	111.0	115.2
Visual impairment	239	289	528	113.0	62.3	78.2
Hearing impairment	93	146	239	44.0	31.5	35.4
Deafblind	*	*	9	*	*	1.3
Physical or motor impairment	468	624	1,092	221.3	134.5	161.6
Language or speech disorder	391	756	1,147	184.9	162.9	169.8
Autistic spectrum disorder	184	1,019	1,203	87.0	219.6	178.1
Social, emotional and behavioural difficulty	242	931	1,173	114.4	200.6	173.6
Physical health problem	227	323	550	107.3	69.6	81.4
Mental health problem	17	18	35	8.0	3.9	5.2
Interrupted learning	15	10	25	7.1	2.2	3.7
English as an additional language	31	47	78	14.7	10.1	11.5
Looked after	61	76	137	28.8	16.4	20.3
More able pupil ⁽¹⁾	*	*	*	*	*	*
Other	55	129	184	26.0	27.8	27.2

(1) Where totals are published elsewhere, the number of 'More able pupil' is assumed to be 2.
Local authority figures on page 86

SCOTLAND: SPECIAL

Table 4.7: Pupils based in special schools who are assessed or declared as disabled, by gender, 2008

				Rate per 1,000 pupils		
	Female	Male	Total	Female	Male	Total
Total assessed and/or declared as disabled	1,099	2,294	3,393	547.9	515.0	525.2
Assessed as disabled ⁽¹⁾	895	1,906	2,801	446.2	427.9	433.6
Declared as disabled but not assessed	204	388	592	101.7	87.1	91.6
Assessed requirement of adaptation to school provision:						
Physical adaptation	319	438	757	159.0	98.3	117.2
Curriculum adaptation	854	1,799	2,653	425.7	403.9	410.7
Communication adaptation	512	1,054	1,566	255.2	236.6	242.4
Not known/not disclosed	30	85	115	15.0	19.1	17.8

(1) Irrespective of whether a pupil is declared as disabled. Excludes grant aided schools.
Local authority figures on page 89

Table 4.8: Pupils based in special schools by gender and mode of attendance, 2003-2008

	2003	2004	2005	2006	2007	2008
Total	7,680	7,389	7,140	6,975	6,709	6,756
Female	2,531	2,381	2,302	2,225	2,132	2,115
Male	5,149	5,008	4,838	4,750	4,577	4,641
Percentage female	33.0	32.2	32.2	31.9	31.8	31.3
Day						
Total	7,322	7,177	6,949	6,766	6,535	6,584
Female	2,422	2,307	2,237	2,156	2,077	2,063
Male	4,900	4,870	4,712	4,610	4,458	4,521
Residential						
Total	188	190	191	209	174	145
Female	67	71	65	69	55	44
Male	121	119	126	140	119	101
Not known						
Total	170	22	-	-	-	27
Female	42	3	-	-	-	8
Male	128	19	-	-	-	19
<i>% residential (of those known)</i>						
Total	2.5	2.6	2.7	3.0	2.6	2.1
Female	2.7	3.0	2.9	3.1	2.6	2.1
Male	2.4	2.4	2.7	2.9	2.6	2.2

Table 4.9: Pupils based in special schools ethnicity by national identity, 2008⁽¹⁾

	Scottish	All other categories	Not known /not disclosed	Total
White - UK	4,333	1,071	252	5,656
White - Other	62	74	11	147
Minority ethnic groupings	112	208	54	374
Not known / not disclosed	32	33	218	283
Total	4,539	1,386	535	6,460

(1) Excludes pupils in grant-aided special schools.
Local authority figures on page 90

Local Authority: All Sectors

Table 5.1: Publicly funded schools, 2000-2008

	2000	2001	2002	2003	2004	2005	2006	2007	2008
Aberdeen City	81	81	78	79	79	79	78	76	72
Aberdeenshire	179	178	177	176	176	173	175	174	174
Angus	69	68	68	68	67	65	68	63	63
Argyll & Bute	100	100	100	99	98	98	98	98	98
Clackmannanshire	24	24	24	26	26	26	26	26	26
Dumfries & Galloway	133	133	130	130	129	125	125	124	126
Dundee City	52	52	52	52	52	51	51	51	48
East Ayrshire	60	60	63	63	63	63	63	63	62
East Dunbartonshire	54	54	53	51	51	53	51	51	51
East Lothian	41	41	41	41	41	42	42	42	43
East Renfrewshire	33	33	32	32	32	32	32	32	32
Edinburgh City	138	138	141	137	136	130	130	130	129
Eilean Siar	55	52	50	50	50	49	49	49	47
Falkirk	63	63	62	62	62	62	62	63	63
Fife	182	183	182	181	179	178	179	175	175
Glasgow City	281	283	277	273	259	256	249	246	251
Highland	223	219	218	219	218	219	219	219	218
Inverclyde	44	45	45	44	39	38	38	37	35
Midlothian	46	44	44	44	43	44	44	39	39
Moray	54	54	54	54	54	54	54	54	54
North Ayrshire	67	67	67	67	67	67	67	66	66
North Lanarkshire	167	167	167	168	168	167	163	163	162
Orkney Islands	28	28	28	28	27	27	27	27	27
Perth & Kinross	90	90	90	89	88	88	88	88	87
Renfrewshire	70	69	68	68	68	67	66	65	65
Scottish Borders	82	82	82	82	79	76	76	76	74
Shetland Islands	44	44	42	42	42	41	41	41	41
South Ayrshire	58	58	58	57	57	57	56	55	55
South Lanarkshire	155	155	155	155	155	153	153	151	151
Stirling	56	56	53	55	53	53	53	52	52
West Dunbartonshire	44	44	44	45	44	44	42	42	43
West Lothian	80	81	81	82	84	83	81	82	82
All local authorities	2,853	2,846	2,826	2,819	2,786	2,760	2,746	2,720	2,713
Grant aided	9	9	9	9	9	9	9	9	9

National figures on page 11

LOCAL AUTHORITY: ALL SECTORS

Table 5.2: Pupils in publicly funded schools, 2000-2008

	2000	2001	2002	2003	2004	2005	2006	2007	2008
Aberdeen City	26,357	25,853	24,999	24,448	23,958	23,465	22,985	22,489	21,874
Aberdeenshire	36,579	36,239	36,160	36,135	36,152	35,815	35,438	34,961	34,326
Angus	16,523	16,408	16,290	16,319	16,211	16,098	16,088	15,813	15,614
Argyll & Bute	13,263	13,016	12,976	12,927	12,847	12,520	12,236	11,981	11,716
Clackmannanshire	7,486	7,430	7,312	7,222	7,195	7,109	7,006	6,973	6,769
Dumfries & Galloway	22,293	22,045	21,851	21,528	21,337	20,941	20,561	20,288	19,894
Dundee City	20,462	20,272	19,803	19,434	18,964	18,649	18,166	17,859	17,598
East Ayrshire	19,022	18,808	18,662	18,467	18,313	17,891	17,490	16,971	16,654
East Dunbartonshire	19,431	19,258	19,026	18,867	18,319	17,608	17,136	16,538	16,253
East Lothian	13,316	13,494	13,532	13,518	13,541	13,467	13,423	13,352	13,164
East Renfrewshire	16,083	16,137	16,314	16,374	16,352	16,346	16,232	16,241	16,213
Edinburgh City	49,681	49,322	48,739	47,927	47,058	46,353	45,504	44,864	44,531
Eilean Siar	4,216	4,166	4,153	4,110	4,018	4,010	3,891	3,833	3,711
Falkirk	21,271	21,246	21,170	21,355	21,376	21,275	20,946	20,737	20,636
Fife	53,195	52,638	52,079	51,455	50,850	50,039	49,388	48,700	48,203
Glasgow City	76,580	75,664	74,535	73,076	71,362	69,799	68,582	67,392	66,075
Highland	33,588	33,326	33,112	33,065	32,858	32,617	32,422	32,163	31,860
Inverclyde	13,299	12,993	12,757	12,482	12,203	11,890	11,521	11,070	10,779
Midlothian	13,020	12,997	12,777	12,710	12,412	12,266	12,073	11,904	11,686
Moray	13,540	13,562	13,660	13,727	13,675	13,506	13,114	13,002	12,581
North Ayrshire	21,579	21,382	21,374	21,174	20,789	20,416	19,909	19,437	19,062
North Lanarkshire	52,505	52,113	51,842	51,579	51,096	50,525	49,864	49,402	48,667
Orkney Islands	3,155	3,130	3,168	3,133	3,111	3,057	3,009	2,929	2,788
Perth & Kinross	18,489	18,366	18,438	18,407	18,230	18,388	18,200	17,977	17,745
Renfrewshire	27,389	27,058	26,820	26,418	25,887	25,413	25,024	24,543	24,110
Scottish Borders	15,721	15,760	15,779	15,696	15,663	15,558	15,478	15,400	15,116
Shetland Islands	3,785	3,751	3,740	3,679	3,655	3,617	3,527	3,441	3,377
South Ayrshire	16,933	16,669	16,347	16,265	15,876	15,635	15,332	15,026	14,783
South Lanarkshire	47,235	46,636	46,212	45,781	45,620	45,026	44,732	44,141	43,429
Stirling	12,794	12,853	12,870	12,994	13,052	12,978	12,937	12,681	12,563
West Dunbartonshire	15,400	15,057	14,810	14,419	14,071	13,679	13,316	12,973	12,723
West Lothian	25,617	25,969	25,840	25,968	25,910	25,880	25,811	25,765	25,740
All local authorities	749,807	743,618	737,147	730,659	721,961	711,836	701,341	690,846	680,240
Grant aided	1,436	1,445	1,450	1,463	1,428	1,404	1,396	1,369	1,333

National figures on page 11.

LOCAL AUTHORITY: ALL SECTORS

Table 5.3: School and Pupil Numbers by Sector and Local Authority, 2008

	Schools			Pupils		
	Primary	Secondary	Special	Primary	Secondary	Special
Aberdeen City	49	12	11	12,072	9,529	273
Aberdeenshire	152	17	5	19,071	15,027	228
Angus	55	8	-	8,722	6,892	-
Argyll & Bute	85	10	3	6,116	5,561	39
Clackmannanshire	19	3	4	3,862	2,872	35
Dumfries & Galloway	106	16	4	10,467	9,408	19
Dundee City	37	10	1	9,577	7,895	126
East Ayrshire	46	9	7	8,984	7,483	187
East Dunbartonshire	37	8	6	8,421	7,666	166
East Lothian	35	6	2	7,378	5,766	20
East Renfrewshire	24	7	1	8,278	7,873	62
Edinburgh City	94	23	12	24,609	19,201	721
Eilean Siar	36	11	-	1,902	1,809	-
Falkirk	49	8	6	11,455	9,008	173
Fife	142	19	14	26,514	21,571	118
Glasgow City	167	30	54	36,920	27,470	1,685
Highland	183	30	5	16,954	14,753	153
Inverclyde	24	7	4	5,656	4,981	142
Midlothian	30	6	3	6,281	5,308	97
Moray	46	8	-	6,831	5,750	-
North Ayrshire	53	9	4	10,296	8,601	165
North Lanarkshire	127	24	11	26,614	21,268	785
Orkney Islands	21	6	-	1,406	1,382	-
Perth & Kinross	76	10	1	9,914	7,781	50
Renfrewshire	51	11	3	12,781	11,000	329
Scottish Borders	65	9	2	8,296	6,820	-
Shetland Islands	32	9	-	1,830	1,547	-
South Ayrshire	44	8	3	7,821	6,870	92
South Lanarkshire	125	17	9	23,621	19,386	422
Stirling	42	7	3	6,532	5,994	37
West						
Dunbartonshire	34	6	3	6,766	5,820	137
West Lothian	66	11	5	14,432	11,109	199
All local authorities	2,152	375	186	370,379	303,401	6,460
Grant aided	1	1	7	460	577	296

National figures on page 11.

LOCAL AUTHORITY: ALL SECTORS

Table 5.4: Pupils who are assessed or declared as disabled in publicly funded schools, 2008⁽¹⁾

	Assessed as disabled (²)	Declared as disabled but not assessed	Type of adaptation assessed as required			Rate assessed and/or declared as disabled per 1,000 pupils
			Physical	Curriculum	Communication	
Aberdeen City	412	15	87	362	153	19.5
Aberdeenshire	941	206	170	815	279	33.4
Angus	55	50	25	33	27	6.7
Argyll & Bute	45	39	21	31	22	7.2
Clackmannanshire	49	24	19	34	25	10.8
Dumfries & Galloway	246	226	81	204	126	23.7
Dundee City	275	124	25	215	123	22.7
East Ayrshire	26	50	16	14	10	4.6
East Dunbartonshire	186	79	49	145	76	16.3
East Lothian	157	28	47	142	64	14.1
East Renfrewshire	55	68	18	17	9	7.6
Edinburgh City	778	158	220	624	411	21.0
Eilean Siar	53	*	8	50	17	14.8
Falkirk	204	70	51	169	106	13.3
Fife	890	431	194	706	297	27.4
Glasgow City	228	367	69	155	96	9.0
Highland	626	78	174	507	270	22.1
Inverclyde	155	32	22	137	58	17.3
Midlothian	167	56	48	139	51	19.1
Moray	273	35	84	197	114	24.5
North Ayrshire	150	51	62	125	61	10.5
North Lanarkshire	345	138	132	306	193	9.9
Orkney Islands	38	*	15	28	8	14.3
Perth & Kinross	370	19	63	294	87	21.9
Renfrewshire	187	79	42	150	70	11.0
Scottish Borders	160	69	60	144	66	15.1
Shetland Islands	174	*	18	156	77	52.1
South Ayrshire	70	101	35	44	23	11.6
South Lanarkshire	491	157	113	402	147	14.9
Stirling	156	81	65	134	93	18.9
West Dunbartonshire	35	37	10	12	8	5.7
West Lothian	84	54	55	69	53	5.4
All local authorities	8,081	2,928	2,098	6,560	3,220	16.2

(1) Does not include grant aided schools. There are wide variations in the extent to which disabled pupils have been identified in different local authorities and the information should not be considered complete. Data may be subject to a small amount of data-swapping for disclosure purposes. See background note 7.2

(2) Irrespective of whether a pupil is declared as disabled
National figures on page 15.

LOCAL AUTHORITY: ALL SECTORS

Table 5.5: Looked after children in publicly funded schools by age and local authority of residence, 2008⁽¹⁾

Local Authority of Residence	Looked after children as indicated in results of school census collection ⁽²⁾		Looked after children from results of children's social work statistics survey ⁽³⁾	
	5-11yrs	12-15yrs	5-11yrs	12-15yrs
Aberdeen City	152	102	217	209
Aberdeenshire	154	127	145	129
Angus	95	73	115	81
Argyll & Bute	59	62	62	85
Clackmannanshire	93	58	54	55
Dumfries & Galloway	142	144	132	164
Dundee City	175	152	222	192
East Ayrshire	153	142	176	119
East Dunbartonshire	51	30	33	39
East Lothian	67	52	68	63
East Renfrewshire	31	46	55	36
Edinburgh City	395	319	479	385
Eilean Siar	11	17	11	19
Falkirk	140	126	151	180
Fife	293	257	298	243
Glasgow City	962	711	1,120	954
Highland	183	171	162	150
Inverclyde	76	51	82	101
Midlothian	83	57	122	98
Moray	52	54	60	61
North Ayrshire	234	203	175	162
North Lanarkshire	276	235	270	248
Orkney Islands	7	12	8	17
Perth & Kinross	70	61	76	75
Renfrewshire	234	140	265	226
Scottish Borders	76	57	51	67
Shetland Islands	18	15	9	10
South Ayrshire	97	76	95	106
South Lanarkshire	351	226	172	210
Stirling	113	85	67	87
West Dunbartonshire	54	86	146	152
West Lothian	139	138	157	134
All local authorities	5,036	4,085	5,255	4,857

(1) See background note 5.12. Pupils may not attend a school in the local authority in which they are looked after.

(2) Does not include grant aided schools

(3) As at 31st March 2007 therefore unlikely to match the pupil census figures exactly. Table excludes children who are on a planned series of short term placements.

National figures on page 12

LOCAL AUTHORITY: ALL SECTORS

Table 5.6: Asylum seekers and refugees in publicly funded schools, 2007-2008⁽¹⁾

	2007		2008	
	Asylum seeker	Refugee	Asylum seeker	Refugee
Aberdeen City	*	7	*	*
Aberdeenshire	-	-	-	-
Angus	-	-	-	-
Argyll & Bute	*	*	*	-
Clackmannanshire	*	-	-	-
Dumfries & Galloway	-	-	-	-
Dundee City	5	-	7	*
East Ayrshire	-	-	*	-
East Dunbartonshire	*	*	*	10
East Lothian	*	*	*	*
East Renfrewshire	*	*	*	*
Edinburgh City	14	18	38	46
Eilean Siar	-	-	-	-
Falkirk	*	*	*	*
Fife	7	-	7	-
Glasgow City	1,594	708	814	1,394
Highland	-	*	-	*
Inverclyde	-	-	-	-
Midlothian	-	-	*	-
Moray	-	-	-	-
North Ayrshire	-	-	-	*
North Lanarkshire	7	6	7	15
Orkney Islands	-	-	-	-
Perth & Kinross	-	-	-	-
Renfrewshire	*	8	*	15
Scottish Borders	-	*	*	-
Shetland Islands	*	-	*	-
South Ayrshire	-	-	-	-
South Lanarkshire	*	*	8	7
Stirling	-	*	-	*
West Dunbartonshire	*	14	*	16
West Lothian	*	-	*	-
All local authorities	1,655	775	907	1,517

(1) Does not include grant aided schools.
National figures on page 17.

LOCAL AUTHORITY: ALL SECTORS

Table 5.7 : Pupils from minority ethnic groups⁽¹⁾, 2007-2008

	Minority ethnic group ⁽²⁾		White other		Not known/not disclosed	
	2007	2008	2007	2008	2007	2008
Aberdeen City	1,552	1,627	926	1,045	617	457
Aberdeenshire	563	559	712	826	396	391
Angus	619	570	206	254	825	651
Argyll & Bute	178	203	211	258	453	411
Clackmannanshire	197	188	121	135	40	38
Dumfries & Galloway	328	341	260	286	451	446
Dundee City	1,075	1,191	279	340	763	604
East Ayrshire	248	258	162	216	189	268
East Dunbartonshire	958	979	223	227	301	311
East Lothian	222	240	162	189	329	206
East Renfrewshire	1,778	1,852	222	256	170	274
Edinburgh City	4,326	4,672	1,867	2,049	823	746
Eilean Siar	54	39	47	52	31	18
Falkirk	506	544	188	221	291	258
Fife	1,259	1,276	576	672	575	419
Glasgow City	8,853	9,177	1,707	1,954	2,937	2,651
Highland	631	632	637	751	397	379
Inverclyde	189	185	110	126	301	279
Midlothian	226	279	150	173	516	531
Moray	201	230	244	264	114	111
North Ayrshire	269	263	248	257	502	512
North Lanarkshire	1,373	1,425	631	780	1,663	1,512
Orkney Islands	35	46	31	37	180	121
Perth & Kinross	369	438	326	431	341	344
Renfrewshire	660	732	308	324	539	515
Scottish Borders	200	227	328	373	277	296
Shetland Islands	52	55	47	59	53	36
South Ayrshire	277	279	376	303	376	406
South Lanarkshire	1,181	1,235	422	501	1,393	1,629
Stirling	324	432	210	220	71	113
West Dunbartonshire	245	264	174	259	454	483
West Lothian	949	939	447	555	783	1,029
All local authorities	29,896	31,477	12,558	14,393	17,151	16,445
Grant aided	103	103	8	8	23	22

(1) Excludes grant aided special schools. Local authority totals have been adjusted slightly for disclosure purposes, however, the figures for "All local authorities" is correct.

(2) Minority ethnic group includes all categories other than white-UK and white-other or unknown/not disclosed. National figures on page 16.

LOCAL AUTHORITY: ALL SECTORS

Table 5.8: Main home language of pupils in publicly funded schools, 2008⁽¹⁾

	Pupils whose main home language is neither English, Gaelic, Scots, Doric nor Sign Language	Number of languages ⁽²⁾	Main three languages after English ⁽³⁾
Aberdeen City	1,811	78	Polish, Arabic, Bengali
Aberdeenshire	738	49	Polish, Lithuanian, Scots
Angus	239	34	Polish, Urdu, Punjabi
Argyll & Bute	181	31	Polish, Gaelic, French
Clackmannanshire	127	19	Polish, Urdu, Punjabi
Dumfries & Galloway	313	43	Polish, Cantonese, Punjabi
Dundee City	964	55	Punjabi, Urdu, Polish
East Ayrshire	165	32	Cantonese, Urdu, Polish
East Dunbartonshire	505	45	Punjabi, Cantonese, Urdu
East Lothian	189	37	Polish, Punjabi, Bosnian
East Renfrewshire	1,164	38	Urdu, Punjabi, Cantonese
Edinburgh City	3,996	90	Polish, Urdu, Punjabi
Eilean Siar	45	17	Gaelic, -
Falkirk	470	37	Punjabi, Urdu, Polish
Fife	919	54	Polish, Punjabi, Urdu
Glasgow City	8,624	110	Punjabi, Urdu, Arabic
Highland	736	52	Polish, Gaelic, Tagalog
Inverclyde	100	22	Cantonese, Punjabi, Sign Language
Midlothian	227	36	Polish, Urdu, Punjabi
Moray	341	38	Polish, Scots, Portuguese
North Ayrshire	190	23	Cantonese, Punjabi, Polish
North Lanarkshire	1,179	53	Punjabi, Polish, Urdu
Orkney Islands	24	8	-
Perth & Kinross	506	46	Polish, Scots, Cantonese
Renfrewshire	570	44	Punjabi, Polish, Urdu
Scottish Borders	307	33	Polish, Portuguese, Scots
Shetland Islands	57	19	Polish, -
South Ayrshire	198	34	Polish, Cantonese, Punjabi
South Lanarkshire	845	49	Punjabi, Urdu, Cantonese
Stirling	241	40	Polish, Punjabi, Urdu
West Dunbartonshire	192	36	Polish, Punjabi, Swahili
West Lothian	638	49	Polish, Urdu, Punjabi
All local authorities	26,801	145	Polish, Punjabi, Urdu

(1) Data includes 1,859 pupils who are not based in their reporting school and hence are likely to be double counted.

(2) Languages other than English and Gaelic.

(3) Where languages are spoken by fewer than 10 pupils this is represented by a - National figures on page 18.

LOCAL AUTHORITY: ALL SECTORS

Table 5.9: Pupils with English as an additional language, 2008

	New to English	Early Acquisition	Developing competence	Competent
Aberdeen City	242	610	434	131
Aberdeenshire	145	130	132	108
Angus	74	10	35	31
Argyll & Bute	64	6	23	9
Clackmannanshire	54	7	18	5
Dumfries & Galloway	50	49	81	52
Dundee City	53	143	234	227
East Ayrshire	24	10	29	14
East Dunbartonshire	22	23	92	196
East Lothian	14	24	38	41
East Renfrewshire	28	63	235	353
Edinburgh City	590	634	804	574
Eilean Siar	7	*	12	*
Falkirk	33	53	123	119
Fife	135	107	152	118
Glasgow City	1,337	1,868	2,572	2,027
Highland	161	76	139	110
Inverclyde	*	*	13	11
Midlothian	20	11	33	35
Moray	32	44	60	57
North Ayrshire	26	10	22	8
North Lanarkshire	236	97	142	192
Orkney Islands	*	-	6	*
Perth & Kinross	82	55	94	84
Renfrewshire	118	16	33	30
Scottish Borders	43	43	76	55
Shetland Islands	*	*	13	12
South Ayrshire	44	13	20	9
South Lanarkshire	115	40	122	96
Stirling	37	8	37	38
West Dunbartonshire	44	11	32	22
West Lothian	176	37	82	64
All local authorities	4,021	4,206	5,938	4,836

LOCAL AUTHORITY: ALL SECTORS

Table 5.10: Percentage of pupils, by Scottish Index of Multiple Deprivation categories, 2008⁽¹⁾

	Most Deprivation							Least Deprivation			
	1	2	3	4	5	6	7	8	9	10	
Aberdeen City	10	7	13	6	9	5	3	7	13	26	
Aberdeenshire	1	2	1	4	8	13	12	25	21	13	
Angus	1	6	8	9	12	14	19	16	11	5	
Argyll & Bute	3	6	5	11	18	26	15	9	6	2	
Clackmannanshire	17	13	10	10	10	17	8	8	6	2	
Dumfries & Galloway	4	6	6	13	18	18	15	14	5	2	
Dundee City	26	16	13	6	4	3	9	8	13	2	
East Ayrshire	12	15	18	15	6	8	7	5	9	6	
East Dunbartonshire	5	4	3	11	6	5	4	13	24	25	
East Lothian	-	3	9	12	11	11	16	17	7	14	
East Renfrewshire	2	6	3	5	4	7	7	8	15	42	
Edinburgh City	13	8	7	6	5	6	6	10	11	29	
Eilean Siar	-	-	24	43	27	4	3	-	-	-	
Falkirk	5	9	14	15	10	9	9	10	11	9	
Fife	5	14	11	9	12	10	11	11	12	6	
Glasgow City	46	14	9	7	4	5	5	5	4	2	
Highland	3	5	10	9	20	15	16	12	7	2	
Inverclyde	25	19	9	6	7	5	12	8	7	3	
Midlothian	2	10	9	20	8	9	12	11	6	13	
Moray	-	2	5	4	16	24	21	18	8	3	
North Ayrshire	12	16	21	9	5	7	11	6	10	3	
North Lanarkshire	11	22	16	11	11	8	5	7	7	2	
Orkney Islands	-	-	-	6	13	20	30	22	10	-	
Perth & Kinross	3	3	5	7	6	14	22	18	13	8	
Renfrewshire	11	16	10	5	13	7	7	7	14	10	
Scottish Borders	2	3	3	5	8	20	24	20	9	6	
Shetland Islands	-	-	-	8	17	39	17	15	5	-	
South Ayrshire	6	8	8	16	16	10	7	7	15	6	
South Lanarkshire	11	10	9	12	12	12	10	9	9	7	
Stirling	5	6	10	9	8	3	12	16	17	13	
West Dunbartonshire	18	21	13	15	8	9	4	6	4	1	
West Lothian	1	13	14	14	12	7	8	9	7	15	
All local authorities	11	10	10	10	10	10	10	10	10	9	
Grant aided	-	3	1	1	3	15	2	4	21	49	

(1) The data here refer to the number of pupils in each local authority's schools, by the SIMD of where they live, irrespective of which local authority they live in. SIMD data is not available for 5,951 pupils or for the 296 pupils in grant aided special schools. Data has been adjusted slightly for disclosure purposes. The categories refer to deciles. Also see background note 7.2

Local Authority: Primary

Table 6.1: Publicly funded primary schools, 2000-2008

	2000	2001	2002	2003	2004	2005	2006	2007	2008
Aberdeen City	57	57	57	57	57	57	57	57	49
Aberdeenshire	156	156	156	155	155	152	153	152	152
Angus	61	60	60	60	59	57	57	55	55
Argyll & Bute	87	87	87	86	85	85	85	85	85
Clackmannanshire	19	19	19	19	19	19	19	19	19
Dumfries & Galloway	114	114	111	110	109	107	107	106	106
Dundee City	41	41	41	41	41	40	40	39	37
East Ayrshire	47	47	47	47	47	47	47	47	46
East Dunbartonshire	37	37	37	37	37	37	37	37	37
East Lothian	35	35	35	35	35	35	35	35	35
East Renfrewshire	24	24	24	24	24	24	24	24	24
Edinburgh City	102	102	102	98	97	94	94	94	94
Eilean Siar	42	40	39	39	39	38	38	38	36
Falkirk	48	48	48	48	48	48	48	49	49
Fife	146	146	146	145	144	143	144	142	142
Glasgow City	203	203	197	197	184	180	172	170	167
Highland	192	187	185	184	183	184	184	184	183
Inverclyde	32	32	32	32	27	26	26	26	24
Midlothian	36	36	36	36	35	35	35	30	30
Moray	46	46	46	46	46	46	46	46	46
North Ayrshire	53	53	53	53	53	53	53	53	53
North Lanarkshire	130	130	130	131	131	130	127	127	127
Orkney Islands	21	21	21	21	21	21	21	21	21
Perth & Kinross	78	78	78	77	76	76	76	76	76
Renfrewshire	52	52	52	52	52	52	52	51	51
Scottish Borders	71	71	71	71	68	65	65	65	65
Shetland Islands	34	34	33	33	33	32	32	32	32
South Ayrshire	45	45	45	45	45	45	45	44	44
South Lanarkshire	125	125	125	125	125	125	125	125	125
Stirling	43	43	43	43	42	42	42	42	42
West Dunbartonshire	35	35	35	35	34	34	34	34	34
West Lothian	65	66	66	66	66	65	65	66	66
All local authorities	2,277	2,270	2,257	2,247	2,216	2,193	2,183	2,167	2,152
Grant aided	1	1	1	1	1	1	1	1	1

National figures on page 19.

LOCAL AUTHORITY: PRIMARY

Table 6.2: Pupils in publicly funded primary schools, 2003-2008

	2003	2004	2005	2006	2007	2008		
						Female	Male	Total
Aberdeen City	13,623	13,234	12,815	12,303	12,285	5,789	6,283	12,072
Aberdeenshire	20,190	20,018	19,736	19,461	19,257	9,231	9,840	19,071
Angus	9,215	9,129	9,064	8,957	8,741	4,259	4,463	8,722
Argyll & Bute	7,137	6,949	6,741	6,484	6,263	2,934	3,182	6,116
Clackmannanshire	4,194	4,084	4,030	3,953	3,931	1,885	1,977	3,862
Dumfries & Galloway	11,915	11,724	11,348	10,961	10,666	5,083	5,384	10,467
Dundee City	10,707	10,335	10,097	9,937	9,720	4,658	4,919	9,577
East Ayrshire	10,093	9,869	9,575	9,388	9,053	4,439	4,545	8,984
East Dunbartonshire	9,720	9,469	9,100	8,927	8,517	4,070	4,351	8,421
East Lothian	7,878	7,764	7,664	7,557	7,451	3,742	3,636	7,378
East Renfrewshire	8,732	8,676	8,589	8,445	8,371	4,032	4,246	8,278
Edinburgh City	26,956	26,183	25,643	25,088	24,714	11,958	12,651	24,609
Eilean Siar	2,158	2,097	2,128	2,037	1,963	965	937	1,902
Falkirk	12,195	12,019	11,964	11,567	11,507	5,590	5,865	11,455
Fife	28,597	28,267	27,679	27,196	26,787	12,980	13,534	26,514
Glasgow City	41,789	40,544	39,456	38,583	37,831	18,240	18,680	36,920
Highland	18,082	17,758	17,535	17,347	17,059	8,183	8,771	16,954
Inverclyde	6,696	6,492	6,315	6,041	5,795	2,766	2,890	5,656
Midlothian	6,897	6,696	6,599	6,494	6,354	3,144	3,137	6,281
Moray	7,778	7,653	7,516	7,200	7,038	3,282	3,549	6,831
North Ayrshire	11,727	11,409	11,046	10,762	10,492	5,097	5,199	10,296
North Lanarkshire	28,296	27,989	27,638	27,252	27,020	13,059	13,555	26,614
Orkney Islands	1,670	1,684	1,630	1,558	1,462	688	718	1,406
Perth & Kinross	10,521	10,257	10,312	10,209	10,057	4,834	5,080	9,914
Renfrewshire	14,305	13,925	13,608	13,357	13,017	6,297	6,484	12,781
Scottish Borders	8,768	8,672	8,587	8,520	8,377	4,083	4,213	8,296
Shetland Islands	2,010	1,987	1,944	1,867	1,849	903	927	1,830
South Ayrshire	8,681	8,407	8,196	8,080	7,974	3,811	4,010	7,821
South Lanarkshire	25,269	25,043	24,341	24,176	23,915	11,619	12,002	23,621
Stirling	7,037	6,968	6,922	6,870	6,649	3,158	3,374	6,532
West Dunbartonshire	7,819	7,550	7,299	7,053	6,889	3,366	3,400	6,766
West Lothian	14,898	14,789	14,683	14,692	14,481	7,211	7,221	14,432
All local authorities	405,553	397,640	389,800	382,322	375,485	181,356	189,023	370,379
Grant aided	462	460	460	461	461	223	237	460

National figures on page 19.

LOCAL AUTHORITY: PRIMARY

Table 6.3: Primary schools and pupils by school denomination, 2008

	Schools			Pupil roll		
	Non-denominational	Roman Catholic	Other denomination ⁽¹⁾	Non-denominational	Roman Catholic	Other denomination
Aberdeen City	46	3	-	11,464	608	-
Aberdeenshire	152	-	-	19,071	-	-
Angus	53	2	-	8,559	163	-
Argyll & Bute	80	5	-	5,553	563	-
Clackmannanshire	17	2	-	3,698	164	-
Dumfries & Galloway	100	6	-	10,037	430	-
Dundee City	26	11	-	7,237	2,340	-
East Ayrshire	40	6	-	8,138	846	-
East Dunbartonshire	29	8	-	6,425	1,996	-
East Lothian	31	4	-	6,727	651	-
East Renfrewshire	17	6	1	5,865	2,255	158
Edinburgh City	79	15	-	21,345	3,264	-
Eilean Siar	36	-	-	1,902	-	-
Falkirk	43	6	-	9,837	1,618	-
Fife	128	14	-	23,953	2,561	-
Glasgow City	103	64	-	22,108	14,812	-
Highland	179	3	1	16,483	407	64
Inverclyde	13	11	-	3,279	2,377	-
Midlothian	23	7	-	5,510	771	-
Moray	43	3	-	6,573	258	-
North Ayrshire	43	10	-	8,495	1,801	-
North Lanarkshire	79	48	-	16,031	10,583	-
Orkney Islands	21	-	-	1,406	-	-
Perth & Kinross	71	4	1	9,042	758	114
Renfrewshire	35	16	-	9,433	3,348	-
Scottish Borders	61	4	-	8,041	255	-
Shetland Islands	32	-	-	1,830	-	-
South Ayrshire	38	6	-	7,041	780	-
South Lanarkshire	96	29	-	17,638	5,983	-
Stirling	38	3	1	5,939	510	83
West Dunbartonshire	21	13	-	3,939	2,827	-
West Lothian	50	16	-	11,396	3,036	-
All local authorities	1,823	325	4	303,995	65,965	419
Grant aided	1	-	-	460	-	-

(1) The denominations of the four 'Other denominational' primary schools were Jewish in East Renfrewshire and Episcopalian in Highland, Perth and Kinross and Stirling. See background note 5.14. National figures on page 18.

LOCAL AUTHORITY: PRIMARY

Table 6.4: Primary pupils by stage, 2008

	P1	P2	P3	P4	P5	P6	P7
Aberdeen City	1,712	1,743	1,633	1,673	1,723	1,815	1,773
Aberdeenshire	2,657	2,680	2,552	2,695	2,830	2,770	2,887
Angus	1,238	1,121	1,287	1,189	1,238	1,309	1,340
Argyll & Bute	827	791	829	847	892	941	989
Clackmannanshire	503	521	569	556	563	561	589
Dumfries & Galloway	1,417	1,428	1,385	1,467	1,510	1,617	1,643
Dundee City	1,408	1,319	1,337	1,291	1,342	1,422	1,458
East Ayrshire	1,266	1,166	1,243	1,271	1,319	1,340	1,379
East Dunbartonshire	1,192	1,066	1,180	1,164	1,214	1,293	1,312
East Lothian	1,073	987	1,051	1,035	1,091	1,069	1,072
East Renfrewshire	1,116	1,131	1,127	1,171	1,186	1,253	1,294
Edinburgh City	3,682	3,506	3,505	3,462	3,480	3,496	3,478
Eilean Siar	265	275	235	276	281	293	277
Falkirk	1,649	1,552	1,518	1,647	1,602	1,764	1,723
Fife	3,786	3,644	3,768	3,692	3,749	3,941	3,934
Glasgow City	5,259	5,051	5,161	5,300	5,220	5,388	5,541
Highland	2,235	2,244	2,337	2,415	2,397	2,708	2,618
Inverclyde	779	774	736	818	826	829	894
Midlothian	863	857	867	907	939	946	902
Moray	863	922	888	961	1,007	1,063	1,127
North Ayrshire	1,449	1,402	1,410	1,444	1,465	1,538	1,588
North Lanarkshire	3,745	3,644	3,626	3,759	3,801	4,014	4,025
Orkney Islands	184	174	195	181	214	223	235
Perth & Kinross	1,369	1,326	1,414	1,443	1,435	1,416	1,511
Renfrewshire	1,807	1,697	1,769	1,808	1,901	1,859	1,940
Scottish Borders	1,117	1,130	1,196	1,206	1,203	1,151	1,293
Shetland Islands	253	240	239	236	292	271	299
South Ayrshire	1,074	1,008	1,081	1,085	1,146	1,253	1,174
South Lanarkshire	3,269	3,273	3,262	3,271	3,514	3,444	3,588
Stirling	924	889	866	940	926	1,000	987
West Dunbartonshire	948	927	902	943	973	1,009	1,064
West Lothian	2,111	1,998	2,055	2,035	2,068	2,087	2,078
All local authorities	52,040	50,486	51,223	52,188	53,347	55,083	56,012
Grant aided	66	66	65	66	65	66	66

National figures on page 19.

LOCAL AUTHORITY: PRIMARY

Table 6.5: Primary classes by type of class, 2008

	number of schools	classes			pupils		
		single stage	composite class	percentage composite	single stage	composite class	percentage composite
Aberdeen City	49	383	106	21.7	9,676	2,396	19.8
Aberdeenshire	152	428	418	49.4	10,740	8,331	43.7
Angus	55	235	135	36.5	5,856	2,866	32.9
Argyll & Bute	85	139	182	56.7	3,153	2,963	48.4
Clackmannanshire	19	137	31	18.5	3,241	621	16.1
Dumfries & Galloway	106	229	255	52.7	5,529	4,938	47.2
Dundee City	37	305	75	19.7	7,844	1,733	18.1
East Ayrshire	46	276	101	26.8	6,810	2,174	24.2
East Dunbartonshire	37	253	88	25.8	6,463	1,958	23.3
East Lothian	35	214	89	29.4	5,601	1,777	24.1
East Renfrewshire	24	308	17	5.2	7,927	351	4.2
Edinburgh City	94	859	146	14.5	21,669	2,940	11.9
Eilean Siar	36	22	112	83.6	386	1,516	79.7
Falkirk	49	382	89	18.9	9,622	1,833	16.0
Fife	142	782	361	31.6	19,021	7,493	28.3
Glasgow City	167	1,179	340	22.4	29,284	7,636	20.7
Highland	183	347	474	57.7	8,430	8,524	50.3
Inverclyde	24	201	32	13.7	4,918	738	13.0
Midlothian	30	203	70	25.6	4,865	1,416	22.5
Moray	46	203	102	33.4	4,792	2,039	29.8
North Ayrshire	53	255	158	38.3	6,722	3,574	34.7
North Lanarkshire	127	851	294	25.7	20,449	6,165	23.2
Orkney Islands	21	41	43	51.2	847	559	39.8
Perth & Kinross	76	273	176	39.2	6,597	3,317	33.5
Renfrewshire	51	417	122	22.6	10,203	2,578	20.2
Scottish Borders	65	214	174	44.8	4,953	3,343	40.3
Shetland Islands	32	46	64	58.2	858	972	53.1
South Ayrshire	44	241	87	26.5	6,136	1,685	21.5
South Lanarkshire	125	673	337	33.4	16,726	6,895	29.2
Stirling	42	192	91	32.2	4,717	1,815	27.8
West Dunbartonshire	34	221	79	26.3	5,140	1,626	24.0
West Lothian	66	466	145	23.7	11,448	2,984	20.7
All local authorities	2,152	10,975	4,993	31.3	271,083	99,756	26.9
Grant aided	1	17	-	-	460	-	-

National figures on page 25.

LOCAL AUTHORITY: PRIMARY

Table 6.6: Average primary class size by type of class, 2008

Note: The P1-P7 information shows average class size for single stage classes. Hence it does not refer to the average class size for pupils in each of the stages, as many pupils will be in composite classes. Please see Table 6.7 for data on class sizes by pupil stage.

	Single stage							Composite	Average class size
	P1	P2	P3	P4	P5	P6	P7		
Aberdeen City	21.5	24.8	24.7	26.6	27.4	27.2	26.0	22.6	24.7
Aberdeenshire	21.4	24.9	25.5	25.9	26.3	26.3	26.4	19.9	22.5
Angus	22.2	23.7	25.8	25.8	25.5	25.5	26.5	21.2	23.6
Argyll & Bute	20.7	21.8	21.1	23.9	23.5	25.0	23.3	16.3	19.1
Clackmannanshire	18.1	23.8	23.6	23.5	25.7	27.0	25.7	20.0	23.0
Dumfries & Galloway	21.0	23.4	23.3	26.2	26.2	25.3	24.7	19.4	21.6
Dundee City	23.0	24.4	26.5	26.4	26.7	27.0	26.9	23.1	25.2
East Ayrshire	21.2	22.6	24.5	26.8	27.0	25.5	26.0	21.5	23.8
East Dunbartonshire	21.9	24.3	25.8	27.1	27.2	27.1	26.7	22.3	24.7
East Lothian	22.9	25.3	26.1	27.0	26.5	28.5	27.5	20.0	24.3
East Renfrewshire	21.4	25.5	26.1	26.6	25.9	27.8	27.7	20.6	25.5
Edinburgh City	22.2	25.2	25.7	25.9	26.3	26.8	25.3	20.1	24.5
Eilean Siar	16.0	22.0	19.0	16.7	19.3	15.0	17.8	13.5	14.2
Falkirk	21.7	23.9	25.2	27.1	25.8	27.3	26.2	20.6	24.3
Fife	20.7	23.1	25.1	25.3	26.4	26.3	24.9	20.8	23.2
Glasgow City	21.1	23.5	24.7	26.9	26.8	26.8	25.8	22.5	24.3
Highland	20.9	23.3	24.5	26.6	24.4	26.0	24.8	18.0	20.7
Inverclyde	21.4	24.4	24.2	26.1	25.0	25.2	25.5	23.1	24.3
Midlothian	20.3	21.9	24.5	25.5	28.3	25.6	23.5	20.2	23.0
Moray	20.8	22.1	22.6	24.5	25.0	24.3	25.8	20.0	22.4
North Ayrshire	23.1	23.1	26.7	27.4	28.4	28.0	28.1	22.6	24.9
North Lanarkshire	19.9	22.9	24.2	25.6	26.3	26.1	25.0	21.0	23.2
Orkney Islands	19.2	20.6	17.5	21.3	23.8	19.7	22.6	13.0	16.7
Perth & Kinross	20.6	22.9	24.5	26.0	26.3	25.9	24.5	18.8	22.1
Renfrewshire	21.3	21.0	25.8	25.9	26.9	25.6	25.4	21.1	23.7
Scottish Borders	19.0	23.4	22.8	23.7	25.0	24.7	25.1	19.2	21.4
Shetland Islands	16.7	18.4	20.8	18.8	19.9	18.4	19.2	15.2	16.6
South Ayrshire	21.6	25.0	26.4	26.0	27.3	27.1	25.9	19.4	23.8
South Lanarkshire	20.7	24.0	24.6	26.9	27.0	26.7	26.0	20.5	23.4
Stirling	22.5	25.1	25.0	25.6	24.4	24.9	25.0	19.9	23.1
West Dunbartonshire	20.1	22.6	21.6	24.3	24.7	25.7	25.0	20.6	22.6
West Lothian	19.9	23.2	24.1	26.7	27.3	27.0	25.9	20.6	23.6
Grant aided	22.0	22.0	21.7	33.0	32.5	33.0	33.0	-	27.1

National figures on page 24.

LOCAL AUTHORITY: PRIMARY

Table 6.7: Number of pupils by pupil stage and class size⁽¹⁾, 2008

	P1			P2 and P3			P4 to P7		
	18 or fewer	19 to 25	more than 25	18 or fewer	19 to 30	more than 30	30 or fewer	31 to 33	more than 33
Aberdeen City	215	1,437	60	100	3,276	-	5,395	1,589	-
Aberdeenshire	464	2,167	26	583	4,649	-	10,042	1,105	35
Angus	192	709	337	192	2,184	32	4,303	738	35
Argyll & Bute	277	485	65	531	1,058	31	3,542	127	-
Clackmannanshire	212	291	-	87	1,003	-	1,985	284	-
Dumfries & Galloway	316	1,033	68	449	2,331	33	5,757	480	-
Dundee City	94	1,214	100	65	2,591	-	4,025	1,401	87
East Ayrshire	137	1,129	-	151	2,258	-	4,638	671	-
East Dunbartonshire	194	972	26	131	2,115	-	4,128	855	-
East Lothian	109	938	26	86	1,921	31	3,285	982	-
East Renfrewshire	102	977	37	49	2,167	42	3,530	1,277	97
Edinburgh City	480	2,804	398	435	6,513	63	11,847	2,032	37
Eilean Siar	173	92	-	343	167	-	1,127	-	-
Falkirk	208	1,358	83	182	2,888	-	5,206	1,530	-
Fife	725	2,887	174	623	6,677	112	12,701	2,581	34
Glasgow City	929	3,770	560	517	9,633	62	16,863	4,586	-
Highland	713	1,470	52	1,042	3,539	-	9,504	634	-
Inverclyde	59	693	27	78	1,432	-	2,607	760	-
Midlothian	204	659	-	130	1,594	-	3,439	255	-
Moray	211	624	28	218	1,592	-	3,623	535	-
North Ayrshire	104	1,292	53	106	2,706	-	4,397	1,604	34
North Lanarkshire	734	2,896	115	742	6,493	35	13,307	2,292	-
Orkney Islands	85	99	-	153	216	-	853	-	-
Perth & Kinross	282	1,087	-	372	2,335	33	5,191	541	73
Renfrewshire	194	1,613	-	191	3,275	-	5,918	1,590	-
Scottish Borders	507	544	66	334	1,992	-	4,582	158	113
Shetland Islands	156	97	-	232	247	-	1,098	-	-
South Ayrshire	224	719	131	202	1,887	-	3,450	1,208	-
South Lanarkshire	703	2,347	219	643	5,761	131	10,717	3,066	34
Stirling	119	641	164	157	1,598	-	3,436	417	-
West Dunbartonshire	264	629	55	250	1,579	-	3,675	314	-
West Lothian	769	1,314	28	758	3,295	-	6,393	1,841	34
All local authorities	10,155	38,987	2,898	10,132	90,972	605	180,564	35,453	613
Grant aided	-	66	-	-	131	-	-	263	-

(1) Some of the larger classes may have more than one teacher.
National figures on pages 25-27.

LOCAL AUTHORITY: PRIMARY

Table 6.8: Percentage of P1-P3 pupils in classes of size 18 or less⁽¹⁾, 2004-2008

	2004	2005	2006	2007	2008
Aberdeen City	7.0	7.2	12.7	8.6	6.2
Aberdeenshire	13.9	14.7	15.5	15.6	13.3
Angus	7.6	7.1	6.5	11.3	10.5
Argyll & Bute	25.1	30.3	29.9	37.6	33.0
Clackmannanshire	7.9	14.4	12.4	14.1	18.8
Dumfries & Galloway	15.4	17.7	18.2	15.1	18.1
Dundee City	3.1	4.0	4.3	4.7	3.9
East Ayrshire	10.4	8.8	9.8	14.3	7.8
East Dunbartonshire	5.3	4.3	6.7	8.4	9.5
East Lothian	6.4	7.0	9.9	6.2	6.3
East Renfrewshire	5.6	5.1	5.7	9.1	4.5
Edinburgh, City of	7.4	6.5	7.1	7.1	8.6
Eilean Siar	61.4	64.0	70.7	72.5	66.6
Falkirk	4.4	4.7	7.2	9.8	8.3
Fife	7.6	10.0	10.1	10.7	12.0
Glasgow City	9.0	10.6	8.0	10.9	9.3
Highland	21.0	22.5	21.8	24.2	25.7
Inverclyde	7.2	8.9	9.2	13.6	6.0
Midlothian	8.5	11.3	8.1	8.6	12.9
Moray	9.3	6.7	7.4	11.5	16.0
North Ayrshire	4.6	4.6	6.9	5.6	4.9
North Lanarkshire	8.9	9.2	9.9	12.1	13.4
Orkney Islands	39.3	48.1	32.4	41.4	43.0
Perth & Kinross	16.5	15.1	14.6	13.1	15.9
Renfrewshire	7.9	7.6	5.9	7.3	7.3
Scottish Borders	10.8	11.5	12.9	17.7	24.4
Shetland Islands	58.5	58.2	55.6	51.0	53.0
South Ayrshire	11.3	10.9	13.8	10.5	13.5
South Lanarkshire	8.0	9.0	6.9	9.4	13.7
Stirling	7.0	10.7	12.8	12.3	10.3
West Dunbartonshire	9.4	9.6	5.1	14.8	18.5
West Lothian	7.5	7.0	7.5	10.0	24.8
All local authorities	10.0	10.7	10.8	12.3	13.2
Grant aided	0.0	0.0	0.0	0.0	0.0

(1) A small proportion of classes of size greater than 18 have two teachers and so a pupil teacher ratio of 18 or less. However these are not counted in this table. See background note 5.1

LOCAL AUTHORITY: PRIMARY

Table 6.9: Looked after children in primary schools by local authority of school, 2008⁽¹⁾

	All pupils	Children looked after:	
		At home	Away from home
Aberdeen City	12,072	81	69
Aberdeenshire	19,071	37	122
Angus	8,722	32	65
Argyll & Bute	6,116	33	27
Clackmannanshire	3,862	20	56
Dumfries & Galloway	10,467	81	65
Dundee City	9,577	74	102
East Ayrshire	8,984	47	95
East Dunbartonshire	8,421	12	38
East Lothian	7,378	22	47
East Renfrewshire	8,278	15	10
Edinburgh City	24,609	205	174
Eilean Siar ⁽²⁾	1,902	-----12-----	
Falkirk	11,455	64	77
Fife	26,514	68	229
Glasgow City	36,920	661	154
Highland	16,954	91	91
Inverclyde	5,656	42	33
Midlothian	6,281	30	49
Moray	6,831	25	28
North Ayrshire	10,296	112	120
North Lanarkshire	26,614	126	116
Orkney Islands ⁽²⁾	1,406	-----7-----	
Perth & Kinross	9,914	24	46
Renfrewshire	12,781	170	60
Scottish Borders	8,296	15	62
Shetland Islands	1,830	5	13
South Ayrshire	7,821	56	39
South Lanarkshire	23,621	237	121
Stirling	6,532	76	29
West Dunbartonshire	6,766	32	19
West Lothian	14,432	45	92
All Local Authorities	370,379	2,545	2,260
Grant Aided	460	-	-

(1) See background note 5.12

(2) Data merged for disclosure purposes

National figures on page 12

LOCAL AUTHORITY: PRIMARY

Table 6.10: Primary pupils with Additional Support Needs, 2008

	with RoN, CSP and/or IEP	with RoN ⁽¹⁾	with CSP ⁽¹⁾	with IEP only	Percentage of pupils with RoN, CSP and/or IEP
Aberdeen City	770	44	6	720	6.4
Aberdeenshire	1,530	28	39	1,463	8.0
Angus	596	34	38	524	6.8
Argyll & Bute	243	14	19	210	4.0
Clackmannanshire	119	2	10	107	3.1
Dumfries & Galloway	615	14	146	455	5.9
Dundee City	649	-	74	575	6.8
East Ayrshire	272	2	3	267	3.0
East Dunbartonshire	207	5	13	189	2.5
East Lothian	157	12	33	112	2.1
East Renfrewshire	316	13	10	293	3.8
Edinburgh City	778	108	27	643	3.2
Eilean Siar	238	6	23	211	12.5
Falkirk	701	25	30	646	6.1
Fife	1,379	34	69	1,276	5.2
Glasgow City	1,424	91	19	1,314	3.9
Highland	729	64	29	636	4.3
Inverclyde	169	12	6	151	3.0
Midlothian	269	4	5	260	4.3
Moray	358	40	50	268	5.2
North Ayrshire	334	8	16	310	3.2
North Lanarkshire	1,094	49	169	876	4.1
Orkney Islands	107	39	8	60	7.6
Perth & Kinross	748	10	63	675	7.5
Renfrewshire	616	29	74	513	4.8
Scottish Borders	297	20	42	235	3.6
Shetland Islands	176	-	19	157	9.6
South Ayrshire	470	10	9	451	6.0
South Lanarkshire	1,069	130	38	901	4.5
Stirling	337	-	24	313	5.2
West Dunbartonshire	159	5	5	149	2.3
West Lothian	700	16	52	632	4.9
All local authorities	17,626	868	1,168	15,592	4.8
Grant aided	-	-	-	-	-

(1) Irrespective of whether they have an IEP
National figures on page 21.

LOCAL AUTHORITY: PRIMARY

Table 6.11: Reasons for support for primary pupils with Additional Support Needs, 2008

	Pupils for whom reason for support is reported	Learning disability	Dyslexia	Other specific learning difficulty (e.g. numeric)	Other moderate learning difficulty	Visual impairment	Hearing impairment	Deafblind	Physical or motor impairment
Aberdeen City	739	95	26	67	140	16	13	*	32
Aberdeenshire	1,530	330	190	153	327	44	25	*	120
Angus	596	71	37	60	95	22	15	*	53
Argyll & Bute	213	17	17	16	38	*	*	-	11
Clackmannanshire	119	15	*	11	13	6	*	-	9
Dumfries & Galloway	566	97	18	83	152	19	14	*	52
Dundee City	649	72	34	15	106	14	11	-	38
East Ayrshire	272	24	21	51	82	6	8	-	9
East Dunbartonshire	207	25	10	25	16	8	*	-	19
East Lothian	157	28	16	28	22	*	*	*	27
East Renfrewshire	316	46	85	*	29	10	5	*	17
Edinburgh, City of	778	94	44	70	97	19	30	-	76
Eilean Siar	230	45	14	31	61	6	7	*	12
Falkirk	632	83	101	108	151	16	7	*	26
Fife	1,379	232	136	68	161	35	44	11	108
Glasgow City	1,424	113	72	86	220	29	14	-	46
Highland	689	105	68	66	106	16	16	-	50
Inverclyde	169	21	33	19	35	*	6	-	12
Midlothian	269	44	12	36	26	12	*	-	23
Moray	342	37	62	25	57	16	15	*	30
North Ayrshire	334	68	40	27	63	12	9	*	19
North Lanarkshire	1,094	109	35	115	199	27	32	-	55
Orkney Islands	107	17	11	27	9	*	*	-	6
Perth & Kinross	748	97	123	70	164	8	12	-	52
Renfrewshire	616	72	39	90	68	14	11	-	40
Scottish Borders	256	58	*	29	41	10	6	-	24
Shetland Islands	167	16	21	26	31	*	-	-	13
South Ayrshire	470	97	38	17	96	13	9	*	31
South Lanarkshire	1,069	225	84	107	263	24	27	-	58
Stirling	337	50	20	42	47	5	7	*	27
West Dunbartonshire	159	28	13	*	27	6	12	*	15
West Lothian	700	89	50	93	125	13	12	*	60
All local authorities	17,333	2,520	1,482	1,674	3,067	444	385	28	1,170
Grant aided	-	-	-	-	-	-	-	-	-

National figures on page 22 .

LOCAL AUTHORITY: PRIMARY

Table 6.11 (cont.): Reasons for support for primary pupils with Additional Support Needs, 2008

Language or speech disorder	Autistic spectrum disorder	Social, emotional and behavioural difficulty	Physical health problem	Mental health problem	Interrupted learning	English as an additional language	Looked after	More able pupil	Other	
97	84	137	32	7	8	154	38	*	12	Aberdeen City
314	169	401	89	22	47	64	36	13	75	Aberdeenshire
85	48	115	27	*	*	62	72	5	33	Angus
32	28	36	13	*	8	*	18	*	19	Argyll & Bute
25	21	34	7	-	*	-	*	-	8	Clackmannanshire
95	100	98	32	*	*	14	14	-	*	Dumfries & Galloway
64	111	185	5	-	13	7	21	5	76	Dundee City
37	11	42	8	-	*	*	7	-	13	East Ayrshire
53	27	34	13	-	*	*	*	*	9	East Dunbartonshire
51	37	55	22	-	*	-	7	*	7	East Lothian
45	65	49	17	-	*	8	*	*	26	East Renfrewshire
156	110	176	49	*	17	15	15	9	82	Edinburgh, City of
42	14	46	8	*	*	7	15	6	9	Eilean Siar
118	61	97	21	*	8	*	8	*	11	Falkirk
182	191	329	54	7	15	51	89	7	55	Fife
110	114	284	57	*	55	287	26	34	82	Glasgow City
97	115	147	43	*	9	21	28	5	15	Highland
20	30	24	*	-	*	*	-	-	7	Inverclyde
62	38	66	19	6	8	5	5	-	16	Midlothian
66	59	69	21	5	7	*	7	*	8	Moray
43	46	53	17	-	7	12	10	-	22	North Ayrshire
169	188	187	33	*	9	56	20	12	62	North Lanarkshire
15	20	15	*	-	-	*	*	5	16	Orkney Islands
107	63	159	18	*	11	20	8	*	58	Perth & Kinross
61	60	133	29	*	11	22	30	13	63	Renfrewshire
61	25	45	16	-	*	6	11	-	8	Scottish Borders
23	28	28	8	-	*	*	5	6	*	Shetland Islands
52	40	175	29	*	6	6	11	-	31	South Ayrshire
105	159	135	29	*	13	13	20	5	73	South Lanarkshire
64	42	105	19	-	*	*	10	*	16	Stirling
31	29	27	9	-	*	*	*	-	7	West Dunbartonshire
146	86	170	26	*	9	18	20	*	72	West Lothian
2,628	2,219	3,656	777	75	285	869	558	147	996	All local authorities
-	-	-	-	-	-	-	-	-	-	Grant aided

LOCAL AUTHORITY: PRIMARY

Table 6.12: Nature of support of primary pupils with Additional Support Needs, 2008

	Pupils for whom nature of support is reported	Education: Additional Specialist teaching support	Education: Additional Specialist non-teaching support	Social Work services	Health services	Voluntary	Other
Aberdeen City	737	562	347	46	150	5	45
Aberdeenshire	1,530	1,239	1,046	185	444	15	64
Angus	596	479	219	45	109	*	69
Argyll & Bute	237	149	137	26	44	*	40
Clackmannanshire	119	75	61	12	24	*	17
Dumfries & Galloway	565	499	335	51	162	*	*
Dundee City	649	549	197	43	137	13	51
East Ayrshire	272	211	70	*	35	-	15
East Dunbartonshire	207	104	132	13	37	*	36
East Lothian	156	116	112	24	84	*	*
East Renfrewshire	316	234	206	14	36	*	28
Edinburgh City	778	466	431	47	195	9	110
Eilean Siar	233	194	114	43	58	*	16
Falkirk	647	553	390	66	143	5	6
Fife	1,379	720	811	176	272	10	133
Glasgow City	1,424	771	327	125	136	13	317
Highland	648	446	386	85	173	18	*
Inverclyde	169	134	81	*	12	-	10
Midlothian	269	198	108	17	74	*	45
Moray	321	279	199	51	116	*	22
North Ayrshire	334	275	133	23	65	*	29
North Lanarkshire	1,094	767	408	60	249	*	126
Orkney Islands	107	102	93	9	19	5	*
Perth & Kinross	748	590	422	58	179	17	35
Renfrewshire	616	343	146	86	135	14	145
Scottish Borders	252	159	170	25	51	16	17
Shetland Islands	158	144	106	7	38	-	*
South Ayrshire	470	386	258	69	100	5	77
South Lanarkshire	1,069	744	520	56	180	*	118
Stirling	337	269	201	43	102	5	16
West Dunbartonshire	159	119	81	10	37	*	27
West Lothian	700	541	323	47	195	8	90
All local authorities	17,296	12,417	8,570	1,571	3,791	188	1,718
Grant aided	-	-	-	-	-	-	-

National figures on page 22.

LOCAL AUTHORITY: PRIMARY

Table 6.13: Primary pupils by ethnicity, 2008

				Percentage		
	Minority ethnic ⁽¹⁾	White other	Not known	Minority ethnic ⁽¹⁾	White other	Not known
Aberdeen City	1,084	625	205	9	5	2
Aberdeenshire	407	510	215	2	3	1
Angus	188	163	422	2	2	5
Argyll & Bute	105	155	284	2	3	5
Clackmannanshire	132	84	20	3	2	1
Dumfries & Galloway	184	157	322	2	1	3
Dundee City	759	219	302	8	2	3
East Ayrshire	158	155	188	2	2	2
East Dunbartonshire	522	136	218	6	2	3
East Lothian	143	100	31	2	1	0
East Renfrewshire	985	157	192	12	2	2
Edinburgh City	2,936	1,377	425	12	6	2
Eilean Siar	24	29	9	1	2	0
Falkirk	334	131	115	3	1	1
Fife	748	409	220	3	2	1
Glasgow City	5,765	1,312	2,027	16	4	5
Highland	336	421	189	2	2	1
Inverclyde	92	102	228	2	2	4
Midlothian	169	84	320	3	1	5
Moray	126	133	63	2	2	1
North Ayrshire	138	174	408	1	2	4
North Lanarkshire	861	578	1,198	3	2	5
Orkney Islands	34	20	34	2	1	2
Perth & Kinross	268	280	133	3	3	1
Renfrewshire	400	202	415	3	2	3
Scottish Borders	134	237	225	2	3	3
Shetland Islands	32	32	25	2	2	1
South Ayrshire	151	219	325	2	3	4
South Lanarkshire	756	402	1,395	3	2	6
Stirling	259	133	75	4	2	1
West Dunbartonshire	146	196	370	2	3	5
West Lothian	617	337	779	4	2	5
All local authorities	18,993	9,269	11,377	5	3	3
Grant aided	39	6	13	8	1	3

(1) Percentage of those with known ethnic background. Minority ethnic group includes all categories other than White-UK and White-Other.

National figures on page 23.

LOCAL AUTHORITY: PRIMARY

Table 6.14: Primary pupils who attend schools outwith their local authority of residence, 2006-2008⁽¹⁾

Local authority of residence	Total pupils 2008	Number going to a school outwith area			% going to a school outwith area		
		2006	2007	2008	2006	2007	2008
Aberdeen City	11,872	72	106	72	0.6	0.9	0.6
Aberdeenshire	19,137	267	289	283	1.4	1.5	1.5
Angus	8,585	166	150	127	1.9	1.7	1.5
Argyll & Bute	6,029	33	30	29	0.5	0.5	0.5
Clackmannanshire	3,844	64	72	53	1.6	1.8	1.4
Dumfries & Galloway	10,427	24	14	14	0.2	0.1	0.1
Dundee City	9,641	235	253	228	2.3	2.6	2.4
East Ayrshire	9,002	192	196	184	2.0	2.2	2.0
East Dunbartonshire	7,593	117	138	125	1.5	1.8	1.6
East Lothian	7,413	107	98	117	1.4	1.3	1.6
East Renfrewshire	7,246	115	105	107	1.5	1.4	1.5
Edinburgh City	24,220	88	93	91	0.4	0.4	0.4
Eilean Siar	1,899	-	-	-	-	-	-
Falkirk	11,466	164	171	145	1.4	1.5	1.3
Fife	26,375	70	78	92	0.3	0.3	0.3
Glasgow City	37,531	2,205	2,218	2,144	5.6	5.8	5.7
Highland	16,793	17	10	9	0.1	0.1	0.1
Inverclyde	5,595	35	35	37	0.6	0.6	0.7
Midlothian	6,208	136	131	110	2.1	2.1	1.8
Moray	6,759	33	24	26	0.5	0.3	0.4
North Ayrshire	10,303	120	128	127	1.1	1.2	1.2
North Lanarkshire	26,959	869	835	816	3.2	3.1	3.0
Orkney Islands	1,399	-	-	-	-	-	-
Perth & Kinross	9,832	153	145	127	1.5	1.5	1.3
Renfrewshire	12,654	156	154	149	1.2	1.2	1.2
Scottish Borders	8,202	34	35	31	0.4	0.4	0.4
Shetland Islands	1,823	-	2	-	-	0.1	-
South Ayrshire	7,685	80	74	69	1.0	0.9	0.9
South Lanarkshire	23,324	651	652	608	2.7	2.8	2.6
Stirling	6,416	65	40	38	1.0	0.6	0.6
West Dunbartonshire	6,808	192	182	201	2.7	2.7	3.0
West Lothian	14,406	152	149	127	1.0	1.0	0.9
All local authorities	367,446	6,612	6,607	6,286	1.7	1.8	1.7

(1) Figures do not include pupils in grant aided schools. Local authority of residence not identified for a further 2,933 pupils.

LOCAL AUTHORITY: PRIMARY

Table 6.15: Primary pupils who attend schools but who live outwith the local authority, 2006-2008⁽¹⁾

Local authority of school	Total pupils 2008	Number coming from outwith area			% Coming from outwith area		
		2006	2007	2008	2006	2007	2008
Aberdeen City	12,034	209	238	234	1.7	1.9	1.9
Aberdeenshire	18,956	113	134	102	0.6	0.7	0.5
Angus	8,677	228	250	219	2.6	2.9	2.5
Argyll & Bute	6,047	47	52	47	0.7	0.8	0.8
Clackmannanshire	3,832	52	42	41	1.3	1.1	1.1
Dumfries & Galloway	10,419	5	6	6	-	0.1	0.1
Dundee City	9,537	156	154	124	1.6	1.6	1.3
East Ayrshire	8,918	119	113	100	1.3	1.3	1.1
East Dunbartonshire	8,346	970	889	878	10.9	10.5	10.5
East Lothian	7,328	49	33	32	0.7	0.4	0.4
East Renfrewshire	8,224	1,033	1,107	1,085	12.4	13.3	13.2
Edinburgh City	24,432	315	324	303	1.3	1.3	1.2
Eilean Siar	1,899	-	-	-	-	-	-
Falkirk	11,357	35	33	36	0.3	0.3	0.3
Fife	26,308	30	29	25	0.1	0.1	0.1
Glasgow City	36,369	1,049	1,040	982	2.8	2.8	2.7
Highland	16,793	9	8	9	0.1	-	0.1
Inverclyde	5,587	33	30	29	0.6	0.5	0.5
Midlothian	6,175	81	72	77	1.3	1.1	1.2
Moray	6,771	45	34	38	0.6	0.5	0.6
North Ayrshire	10,205	36	29	29	0.3	0.3	0.3
North Lanarkshire	26,492	372	391	349	1.4	1.5	1.3
Orkney Islands	1,399	-	-	-	-	-	-
Perth & Kinross	9,849	163	154	144	1.6	1.5	1.5
Renfrewshire	12,683	212	203	178	1.6	1.6	1.4
Scottish Borders	8,214	49	40	43	0.6	0.5	0.5
Shetland Islands	1,821	-	2	-	-	0.1	-
South Ayrshire	7,774	165	157	158	2.1	2.0	2.0
South Lanarkshire	23,385	690	671	669	2.9	2.8	2.9
Stirling	6,479	119	121	101	1.7	1.8	1.6
West Dunbartonshire	6,743	149	154	136	2.1	2.3	2.0
West Lothian	14,393	79	97	114	0.5	0.7	0.8
All local authorities	367,446	6,612	6,607	6,288	1.7	1.8	1.7

(1) Figures do not include pupils in grant aided schools. Local authority of residence not identified for a further 2,933 pupils.

LOCAL AUTHORITY: PRIMARY

Table 6.16: Primary pupils receiving Gaelic medium education, 2008.

	"Gaelic medium education"			
	Exclusively through Gaelic	All curriculum through Gaelic or bilingual	Some curriculum through English, some through Gaelic	Gaelic the only subject taught through Gaelic
Aberdeen City	-	-	38	-
Aberdeenshire	1	-	-	-
Angus	-	6	8	-
Argyll & Bute	42	56	40	-
Clackmannanshire	-	-	-	-
Dumfries & Galloway	-	-	-	-
Dundee City	-	-	-	-
East Ayrshire	25	-	-	-
East Dunbartonshire	52	-	-	-
East Lothian	-	-	-	-
East Renfrewshire	-	-	-	-
Edinburgh City	75	39	-	-
Eilean Siar	177	311	7	41
Falkirk	-	-	-	-
Fife	-	-	-	-
Glasgow City	-	287	-	-
Highland	342	296	90	-
Inverclyde	19	-	12	-
Midlothian	-	-	-	-
Moray	-	-	-	-
North Ayrshire	-	-	-	-
North Lanarkshire	-	116	-	-
Orkney Islands	-	-	-	-
Perth & Kinross	6	-	-	337
Renfrewshire	-	-	-	-
Scottish Borders	-	-	-	-
Shetland Islands	-	-	-	-
South Ayrshire	-	-	-	-
South Lanarkshire	56	28	-	-
Stirling	67	-	-	-
West Dunbartonshire	-	-	-	1
West Lothian	-	-	-	-
All local authorities	862	1,139	195	379
Grant aided	-	-	-	-

LOCAL AUTHORITY: SECONDARY

Local Authority: Secondary

Table 7.1: Publicly funded secondary schools, 2000-2008

	2000	2001	2002	2003	2004	2005	2006	2007	2008
Aberdeen City	13	13	12	12	12	12	12	12	12
Aberdeenshire	16	16	17	17	17	17	17	17	17
Angus	8	8	8	8	8	8	8	8	8
Argyll & Bute	10	10	10	10	10	10	10	10	10
Clackmannanshire	3	3	3	3	3	3	3	3	3
Dumfries & Galloway	16	16	16	16	16	16	16	16	16
Dundee City	10	10	10	10	10	10	10	11	10
East Ayrshire	9	9	9	9	9	9	9	9	9
East Dunbartonshire	9	9	9	9	9	9	8	8	8
East Lothian	6	6	6	6	6	6	6	6	6
East Renfrewshire	7	7	7	7	7	7	7	7	7
Edinburgh City	23	23	23	23	23	23	23	23	23
Eilean Siar	13	12	11	11	11	11	11	11	11
Falkirk	8	8	8	8	8	8	8	8	8
Fife	19	19	19	19	19	19	19	19	19
Glasgow City	29	29	29	29	29	29	30	30	30
Highland	28	28	29	29	29	30	30	30	30
Inverclyde	8	8	8	8	8	8	8	7	7
Midlothian	6	6	6	6	6	6	6	6	6
Moray	8	8	8	8	8	8	8	8	8
North Ayrshire	10	10	10	10	10	10	10	9	9
North Lanarkshire	26	26	26	26	26	26	25	25	24
Orkney Islands	6	6	6	6	6	6	6	6	6
Perth & Kinross	10	10	10	10	10	10	10	10	10
Renfrewshire	14	13	12	12	12	12	11	11	11
Scottish Borders	9	9	9	9	9	9	9	9	9
Shetland Islands	9	9	9	9	9	9	9	9	9
South Ayrshire	9	9	9	9	9	9	8	8	8
South Lanarkshire	21	21	21	21	21	19	19	17	17
Stirling	7	7	7	7	7	7	7	7	7
West Dunbartonshire	7	7	7	7	7	7	6	6	6
West Lothian	11	11	11	11	11	11	11	11	11
All local authorities	388	386	385	385	385	384	380	377	375
Grant aided	1	1	1	1	1	1	1	1	1

National figures on page 28.

LOCAL AUTHORITY: SECONDARY

Table 7.2: Pupils in publicly funded secondary schools, 2003-2008

	2003	2004	2005	2006	2007	2008		
						Female	Male	Total
Aberdeen City	10,552	10,457	10,375	10,396	9,917	4,640	4,889	9,529
Aberdeenshire	15,670	15,881	15,836	15,743	15,474	7,530	7,497	15,027
Angus	7,104	7,082	7,034	7,131	7,072	3,490	3,402	6,892
Argyll & Bute	5,739	5,853	5,735	5,699	5,680	2,769	2,792	5,561
Clackmannanshire	2,991	3,074	3,042	3,015	3,000	1,452	1,420	2,872
Dumfries & Galloway	9,564	9,585	9,581	9,590	9,615	4,714	4,694	9,408
Dundee City	8,585	8,501	8,433	8,123	8,026	3,906	3,989	7,895
East Ayrshire	8,181	8,255	8,139	7,925	7,736	3,686	3,797	7,483
East Dunbartonshire	8,991	8,690	8,348	8,050	7,854	3,713	3,953	7,666
East Lothian	5,640	5,777	5,803	5,866	5,901	2,827	2,939	5,766
East Renfrewshire	7,591	7,625	7,705	7,732	7,804	3,903	3,970	7,873
Edinburgh City	20,220	20,140	19,978	19,689	19,454	9,437	9,764	19,201
Eilean Siar	1,952	1,921	1,882	1,854	1,870	911	898	1,809
Falkirk	8,933	9,147	9,119	9,207	9,071	4,443	4,565	9,008
Fife	22,701	22,424	22,213	22,051	21,795	10,801	10,770	21,571
Glasgow City	29,318	28,914	28,499	28,189	27,876	13,842	13,628	27,470
Highland	14,807	14,928	14,908	14,902	14,942	7,403	7,350	14,753
Inverclyde	5,640	5,571	5,444	5,337	5,134	2,527	2,454	4,981
Midlothian	5,647	5,550	5,502	5,464	5,457	2,642	2,666	5,308
Moray	5,949	6,022	5,990	5,914	5,964	2,887	2,863	5,750
North Ayrshire	9,276	9,205	9,203	8,982	8,774	4,269	4,332	8,601
North Lanarkshire	22,474	22,363	22,123	21,829	21,597	10,615	10,653	21,268
Orkney Islands	1,441	1,427	1,427	1,451	1,467	705	677	1,382
Perth & Kinross	7,831	7,919	8,023	7,941	7,870	3,905	3,876	7,781
Renfrewshire	11,791	11,657	11,506	11,368	11,208	5,487	5,513	11,000
Scottish Borders	6,928	6,991	6,971	6,958	7,023	3,392	3,428	6,820
Shetland Islands	1,669	1,668	1,673	1,660	1,592	758	789	1,547
South Ayrshire	7,495	7,384	7,350	7,158	6,957	3,493	3,377	6,870
South Lanarkshire	19,956	20,018	20,170	20,033	19,757	9,680	9,706	19,386
Stirling	5,918	6,043	6,022	6,037	6,004	3,027	2,967	5,994
West Dunbartonshire	6,467	6,397	6,255	6,159	5,987	2,869	2,951	5,820
West Lothian	10,818	10,842	10,967	10,937	11,096	5,554	5,555	11,109
All local authorities	317,839	317,311	315,256	312,390	308,974	151,277	152,124	303,401
Grant aided	588	589	584	589	586	278	299	577

National figures on page 28.

LOCAL AUTHORITY: SECONDARY

Table 7.3: Secondary schools and pupils by school denomination, 2008

	Schools		Pupil roll	
	Non-denominational ⁽¹⁾	Roman Catholic	Non-denominational	Roman Catholic
Aberdeen City	12	-	9,529	-
Aberdeenshire	17	-	15,027	-
Angus	8	-	6,892	-
Argyll & Bute	10	-	5,561	-
Clackmannanshire	3	-	2,872	-
Dumfries & Galloway	15	1	8,627	781
Dundee City	8	2	5,856	2,039
East Ayrshire	8	1	6,727	756
East Dunbartonshire	6	2	6,282	1,384
East Lothian	6	-	5,766	-
East Renfrewshire	5	2	5,504	2,369
Edinburgh City	20	3	16,758	2,443
Eilean Siar	11	-	1,809	-
Falkirk	7	1	7,834	1,174
Fife	17	2	19,893	1,678
Glasgow City	19	11	16,611	10,859
Highland	30	-	14,753	-
Inverclyde	4	3	2,848	2,133
Midlothian	5	1	4,502	806
Moray	8	-	5,750	-
North Ayrshire	8	1	7,198	1,403
North Lanarkshire	15	9	11,804	9,464
Orkney Islands	6	-	1,382	-
Perth & Kinross	9	1	7,240	541
Renfrewshire	8	3	8,051	2,949
Scottish Borders	9	-	6,820	-
Shetland Islands	9	-	1,547	-
South Ayrshire	7	1	6,193	677
South Lanarkshire	13	4	14,777	4,609
Stirling	6	1	5,092	902
West Dunbartonshire	3	3	3,058	2,762
West Lothian	9	2	8,924	2,185
All local authorities	321	54	251,487	51,914
Grant aided	1	-	577	-

(1) See background note 5.14.
National figures on page 28.

LOCAL AUTHORITY: SECONDARY

Table 7.4: Secondary pupils by stage, 2008

	S1	S2	S3	S4	S5	S6
Aberdeen City	1,756	1,757	1,968	1,877	1,375	796
Aberdeenshire	2,749	2,849	2,918	3,035	2,154	1,322
Angus	1,256	1,360	1,391	1,319	1,011	555
Argyll & Bute	930	1,016	1,040	1,041	902	632
Clackmannanshire	522	544	560	560	447	239
Dumfries & Galloway	1,680	1,813	1,830	1,890	1,334	861
Dundee City	1,520	1,533	1,436	1,572	1,164	670
East Ayrshire	1,320	1,420	1,417	1,472	1,237	617
East Dunbartonshire	1,319	1,382	1,367	1,392	1,204	1,002
East Lothian	1,095	1,102	1,095	1,098	841	535
East Renfrewshire	1,363	1,394	1,441	1,417	1,280	978
Edinburgh City	3,478	3,542	3,654	3,557	2,985	1,985
Eilean Siar	328	361	336	309	300	175
Falkirk	1,667	1,586	1,818	1,629	1,480	828
Fife	4,029	4,070	4,219	4,193	3,224	1,836
Glasgow City	5,169	5,161	5,354	5,380	4,230	2,176
Highland	2,563	2,770	2,739	2,789	2,378	1,514
Inverclyde	868	936	940	893	845	499
Midlothian	963	999	1,046	1,004	797	499
Moray	1,051	1,134	1,141	1,098	852	474
North Ayrshire	1,617	1,648	1,645	1,710	1,247	734
North Lanarkshire	4,082	4,015	4,049	4,051	3,298	1,773
Orkney Islands	249	285	286	260	184	118
Perth & Kinross	1,438	1,414	1,440	1,524	1,231	734
Renfrewshire	2,017	2,023	1,996	2,107	1,827	1,030
Scottish Borders	1,245	1,361	1,339	1,312	903	660
Shetland Islands	280	272	308	299	245	143
South Ayrshire	1,283	1,197	1,263	1,367	1,089	671
South Lanarkshire	3,552	3,547	3,621	3,866	3,069	1,731
Stirling	1,075	1,107	1,063	1,067	1,038	644
West Dunbartonshire	1,063	1,081	1,130	1,125	930	491
West Lothian	2,114	2,146	2,084	2,144	1,665	956
All local authorities	55,641	56,825	57,934	58,357	46,766	27,878
Grant aided	99	99	99	95	100	85

National figures on page 28.

LOCAL AUTHORITY: SECONDARY

Table 7.5: Secondary pupils with Additional Support Needs, 2008

	with RoN, CSP and/or IEP	with RoN ⁽¹⁾	with CSP ⁽¹⁾	with IEP only	Percentage of pupils with RoN, CSP and/or IEP
Aberdeen City	382	109	-	273	4.0
Aberdeenshire	1,368	88	28	1,252	9.1
Angus	400	79	11	310	5.8
Argyll & Bute	319	71	13	235	5.7
Clackmannanshire	263	23	4	236	9.2
Dumfries & Galloway	503	43	76	384	5.3
Dundee City	830	-	8	822	10.5
East Ayrshire	213	6	5	202	2.8
East Dunbartonshire	96	38	11	47	1.3
East Lothian	77	18	6	53	1.3
East Renfrewshire	179	56	3	120	2.3
Edinburgh City	369	65	9	295	1.9
Eilean Siar	150	18	17	116	8.3
Falkirk	710	42	9	659	7.9
Fife	1,318	90	38	1,190	6.1
Glasgow City	1,003	160	16	827	3.7
Highland	699	199	18	482	4.7
Inverclyde	232	50	6	176	4.7
Midlothian	190	16	2	172	3.6
Moray	353	163	38	152	6.1
North Ayrshire	299	14	1	284	3.5
North Lanarkshire	652	59	44	549	3.1
Orkney Islands	74	10	1	63	5.4
Perth & Kinross	439	75	17	347	5.6
Renfrewshire	384	95	7	282	3.5
Scottish Borders	220	28	41	151	3.2
Shetland Islands	143	18	12	113	9.2
South Ayrshire	529	49	6	474	7.7
South Lanarkshire	793	197	9	587	4.1
Stirling	365	24	10	331	6.1
West Dunbartonshire	292	8	7	277	5.0
West Lothian	488	25	5	458	4.4
All local authorities	14,332	1,936	478	11,919	4.7
Grant aided ⁽²⁾	*	*	*	*	*

(1) Irrespective of whether they have an IEP

(2) Where totals are published elsewhere, the figure for IEP in grant aided schools has been assumed to be 2 National figures on page 30.

LOCAL AUTHORITY: SECONDARY

Table 7.6: Reasons for support for secondary pupils with Additional Support Needs, 2008

	Pupils for whom reason for support is reported	Learning disability	Dyslexia	Other specific learning difficulty (e.g. numeric)	Other moderate learning difficulty	Visual impairment	Hearing impairment	Deafblind	Physical or motor impairment
Aberdeen City	382	75	15	26	21	9	5	-	5
Aberdeenshire	1,368	377	355	124	188	25	23	-	76
Angus	400	78	40	10	49	11	11	-	15
Argyll & Bute	319	25	52	49	37	6	9	-	30
Clackmannanshire	263	30	27	10	35	*	*	-	13
Dumfries & Galloway	503	83	40	31	100	11	7	*	34
Dundee City	830	80	76	28	54	6	19	-	22
East Ayrshire	213	19	24	16	66	-	9	-	15
East Dunbartonshire	96	10	20	*	8	*	5	-	12
East Lothian	77	18	9	*	9	-	5	*	6
East Renfrewshire	179	22	47	6	23	*	6	*	9
Edinburgh, City of	369	69	64	17	50	*	-	*	29
Eilean Siar	150	15	42	9	34	5	*	-	*
Falkirk	710	68	114	276	66	11	8	-	26
Fife	1,318	244	322	82	102	24	34	*	67
Glasgow City	1,003	28	175	40	114	32	38	-	51
Highland	699	135	72	38	72	16	19	*	41
Inverclyde	232	9	66	10	45	7	11	-	11
Midlothian	190	44	27	9	27	*	*	*	10
Moray	353	124	96	18	43	13	11	*	31
North Ayrshire	299	36	83	21	45	5	*	-	11
North Lanarkshire	652	125	120	54	83	28	35	-	38
Orkney Islands	74	14	7	*	40	-	-	-	*
Perth & Kinross	439	72	91	41	48	8	7	-	20
Renfrewshire	384	46	90	33	73	14	7	-	12
Scottish Borders	220	75	17	10	43	*	5	*	24
Shetland Islands	143	16	21	10	16	*	*	-	8
South Ayrshire	529	71	97	28	89	7	5	*	19
South Lanarkshire	793	105	234	40	133	23	22	*	43
Stirling	365	52	39	27	29	6	*	-	21
West Dunbartonshire	292	100	57	7	6	*	5	-	17
West Lothian	488	37	133	68	51	10	10	-	25
Grant aided	-	-	-	-	-	-	-	-	-

National figures on page 31 .

LOCAL AUTHORITY: SECONDARY

Table 7.6 (cont.):Reasons for support for secondary pupils with Additional Support Needs, 2008

Language or speech disorder	Autistic spectrum disorder	Social, emotional and behavioural difficulty	Physical health problem	Mental health problem	Interrupted learning	English as an additional language	Looked after	More able pupil	Other	
*	38	65	*	-	*	18	*	*	*	Aberdeen City
66	125	460	52	22	21	75	37	*	62	Aberdeenshire
18	23	91	9	*	9	18	39	-	65	Angus
13	29	30	11	-	6	14	6	*	19	Argyll & Bute
25	22	134	*	*	-	23	*	-	*	Clackmannanshire
24	62	63	25	5	*	17	7	-	93	Dumfries & Galloway
12	37	445	15	8	29	22	24	*	105	Dundee City
6	23	26	7	-	-	*	13	*	5	East Ayrshire
*	19	6	*	-	-	-	-	*	10	East Dunbartonshire
7	12	15	6	*	-	*	*	-	*	East Lothian
17	36	15	17	-	-	6	*	-	8	East Renfrewshire
18	39	62	17	*	*	*	11	*	65	Edinburgh, City of
8	11	22	*	-	*	11	*	*	10	Eilean Siar
30	29	119	25	*	7	10	5	-	*	Falkirk
46	163	304	46	*	8	16	43	-	118	Fife
46	129	163	20	*	10	57	59	116	84	Glasgow City
32	98	89	29	5	-	23	17	-	*	Highland
6	27	45	*	*	*	*	-	-	28	Inverclyde
*	17	55	13	9	*	*	6	-	*	Midlothian
47	46	88	22	*	5	*	*	-	14	Moray
6	38	57	10	*	9	8	23	-	19	North Ayrshire
50	81	69	29	4	8	17	8	*	66	North Lanarkshire
*	*	*	*	-	-	*	-	-	5	Orkney Islands
12	45	124	18	12	6	7	*	-	21	Perth & Kinross
9	50	58	12	7	9	10	7	-	27	Renfrewshire
23	19	48	13	*	*	-	*	-	*	Scottish Borders
8	22	35	5	*	*	5	15	5	5	Shetland Islands
23	38	176	11	*	11	19	12	-	34	South Ayrshire
24	81	131	33	5	49	11	20	*	45	South Lanarkshire
20	34	119	*	*	15	*	7	*	51	Stirling
14	28	57	18	-	-	15	8	-	25	West Dunbartonshire
19	53	137	12	5	*	*	5	*	18	West Lothian
-	-	-	-	-	-	-	-	-	-	Grant aided

LOCAL AUTHORITY: SECONDARY

Table 7.7: Nature of support for secondary pupils with Additional Support Needs, 2008

	Pupils for whom nature of support is reported	Education: Additional Specialist teaching support	Education: Additional Specialist non-teaching support	Social Work services	Health services	Voluntary	Other
Aberdeen City	239	213	81	9	12	*	7
Aberdeenshire	1,276	1,162	1,039	155	149	11	21
Angus	400	259	142	52	19	-	84
Argyll & Bute	273	198	125	13	14	*	41
Clackmannanshire	263	175	194	15	10	-	30
Dumfries & Galloway	454	326	378	56	61	10	5
Dundee City	830	628	216	87	75	20	100
East Ayrshire	213	153	31	12	5	-	29
East Dunbartonshire	96	65	60	*	8	-	12
East Lothian	73	56	17	*	10	*	15
East Renfrewshire	179	124	101	10	9	*	13
Edinburgh City	369	216	171	15	29	*	74
Eilean Siar	128	108	28	12	14	*	14
Falkirk	674	516	569	26	38	*	*
Fife	1,316	856	610	89	99	10	207
Glasgow City	1,003	549	312	73	50	*	226
Highland	519	448	247	50	68	8	*
Inverclyde	232	141	134	12	9	-	28
Midlothian	190	114	133	24	36	*	9
Moray	344	275	307	80	82	*	42
North Ayrshire	299	256	169	34	24	*	22
North Lanarkshire	652	483	384	29	89	8	34
Orkney Islands	74	28	56	-	6	-	6
Perth & Kinross	439	392	183	41	56	6	29
Renfrewshire	384	238	148	18	24	-	38
Scottish Borders	220	189	121	17	35	6	24
Shetland Islands	119	114	80	20	27	9	*
South Ayrshire	529	452	336	82	41	*	50
South Lanarkshire	793	432	245	48	65	47	198
Stirling	358	169	206	23	31	*	79
West Dunbartonshire	292	261	258	20	22	-	*
West Lothian	488	349	287	23	44	*	73
All local authorities	13,718	9,945	7,368	1,152	1,261	164	1,521
Grant aided	-	-	-	-	-	-	-

National figures on page 31.

LOCAL AUTHORITY: SECONDARY

Table 7.8: Looked after children in secondary schools by local authority of school, 2008⁽¹⁾

	All pupils	Children looked after:	
		At home	Away from home
Aberdeen City	9,529	54	47
Aberdeenshire	15,027	52	91
Angus	6,892	29	64
Argyll & Bute	5,561	28	36
Clackmannanshire	2,872	23	31
Dumfries & Galloway	9,408	94	70
Dundee City	7,895	98	69
East Ayrshire	7,483	73	79
East Dunbartonshire	7,666	21	11
East Lothian	5,766	24	41
East Renfrewshire	7,873	42	12
Edinburgh City	19,201	163	120
Eilean Siar ⁽²⁾	1,809	-----18-----	
Falkirk	9,008	91	72
Fife	21,571	79	216
Glasgow City	27,470	574	159
Highland	14,753	112	71
Inverclyde	4,981	37	20
Midlothian	5,308	40	40
Moray	5,750	26	32
North Ayrshire	8,601	112	98
North Lanarkshire	21,268	120	77
Orkney Islands ⁽²⁾	1,382	-----14-----	
Perth & Kinross	7,781	36	42
Renfrewshire	11,000	83	73
Scottish Borders	6,820	28	38
Shetland Islands	1,547	12	8
South Ayrshire	6,870	50	37
South Lanarkshire	19,386	136	81
Stirling	5,994	68	45
West Dunbartonshire	5,820	56	36
West Lothian	11,109	57	60
All local authorities	303,401	2,430	1,896
Grant aided	577	-	-

(1) See background note 5.12

(2) Data merged for disclosure purposes

National figures on page 12.

LOCAL AUTHORITY: SECONDARY

Table 7.9: Secondary pupils by ethnicity, 2008

	Minority ethnic	White other	Not known	Of which percentage		
				Minority ethnic ⁽¹⁾	White other	Not known
Aberdeen City	527	418	234	6	4	2
Aberdeenshire	251	309	171	2	2	1
Angus	382	91	229	6	1	3
Argyll & Bute	98	103	124	2	2	2
Clackmannanshire	54	51	17	2	2	1
Dumfries & Galloway	154	127	124	2	1	1
Dundee City	423	115	299	5	1	4
East Ayrshire	97	58	76	1	1	1
East Dunbartonshire	451	86	92	6	1	1
East Lothian	97	89	165	2	2	3
East Renfrewshire	860	97	81	11	1	1
Edinburgh City	1,675	649	311	9	3	2
Eilean Siar	15	23	9	1	1	0
Falkirk	204	90	139	2	1	2
Fife	522	263	193	2	1	1
Glasgow City	3,214	599	485	12	2	2
Highland	293	327	175	2	2	1
Inverclyde	91	20	51	2	0	1
Midlothian	107	87	209	2	2	4
Moray	104	131	48	2	2	1
North Ayrshire	123	81	103	1	1	1
North Lanarkshire	552	180	301	3	1	1
Orkney Islands	12	17	87	1	1	6
Perth & Kinross	168	151	209	2	2	3
Renfrewshire	328	117	95	3	1	1
Scottish Borders	93	136	71	1	2	1
Shetland Islands	23	27	11	1	2	1
South Ayrshire	126	82	80	2	1	1
South Lanarkshire	467	96	212	2	0	1
Stirling	171	87	38	3	1	1
West Dunbartonshire	114	60	107	2	1	2
West Lothian	314	210	239	3	2	2
All local authorities	12,110	4,977	4,785	4	2	2
Grant aided	64	2	9	11	0	2

(1) Percentage of those with known ethnic background. Minority ethnic includes all categories other than White-UK and White-Other.

National figures on page 32.

LOCAL AUTHORITY: SECONDARY

Table 7.10: Secondary pupils who attend schools outwith their local authority of residence, 2006-2008⁽¹⁾

Local authority of residence	Total pupils 2008	Number going to a school outwith area			% going to a school outwith area		
		2006	2007	2008	2006	2007	2008
Aberdeen City	9,052	175	172	184	1.8	1.8	2.0
Aberdeenshire	15,375	702	686	671	4.3	4.3	4.4
Angus	6,871	230	249	265	3.3	3.5	3.9
Argyll & Bute	5,590	130	122	102	2.3	2.1	1.8
Clackmannanshire	3,081	222	242	241	7.0	7.6	7.8
Dumfries & Galloway	9,358	9	6	5	0.1	0.1	0.1
Dundee City	7,664	228	218	198	2.9	2.8	2.6
East Ayrshire	7,661	321	329	344	4.0	4.2	4.5
East Dunbartonshire	6,921	470	425	426	6.6	6.0	6.2
East Lothian	6,021	316	332	329	5.2	5.4	5.5
East Renfrewshire	6,330	127	108	103	2.0	1.7	1.6
Edinburgh City	18,650	197	177	157	1.0	0.9	0.8
Eilean Siar	1,790	2	1	-	0.1	0.1	-
Falkirk	9,295	418	414	406	4.4	4.4	4.4
Fife	21,572	133	138	121	0.6	0.6	0.6
Glasgow City	29,730	3,918	3,840	3739	12.8	12.7	12.6
Highland	14,661	38	32	34	0.3	0.2	0.2
Inverclyde	4,955	62	56	56	1.2	1.1	1.1
Midlothian	5,066	113	114	135	2.2	2.2	2.7
Moray	5,736	37	39	38	0.6	0.7	0.7
North Ayrshire	8,691	194	202	200	2.1	2.3	2.3
North Lanarkshire	21,173	1,405	1,365	1339	6.5	6.4	6.3
Orkney Islands	1,370	1	1	-	0.1	0.1	-
Perth & Kinross	7,922	304	322	295	3.7	4.0	3.7
Renfrewshire	10,606	178	177	197	1.6	1.6	1.9
Scottish Borders	6,827	97	99	86	1.4	1.4	1.3
Shetland Islands	1,547	2	2	-	0.1	0.1	-
South Ayrshire	6,617	64	64	77	0.9	1.0	1.2
South Lanarkshire	19,014	957	961	956	4.9	5.0	5.0
Stirling	5,398	49	43	45	0.9	0.8	0.8
West Dunbartonshire	5,727	338	313	340	5.6	5.4	5.9
West Lothian	11,325	366	344	337	3.3	3.0	3.0
All local authorities	301,596	11,803	11,593	11426	3.8	3.8	3.8

(1) Figures do not include pupils in grant aided schools. Local authority of residence not identified for a further 1,805 pupils.

LOCAL AUTHORITY: SECONDARY

Table 7.11: Secondary pupils who attend schools but who live outwith the local authority, 2006-2008⁽¹⁾

Local authority of school	Total pupils	Number coming from outwith area			% coming from outwith area		
		2006	2007	2008	2006	2007	2008
Aberdeen City	9,508	672	651	640	6.5	6.6	6.7
Aberdeenshire	14,981	253	255	277	1.6	1.7	1.8
Angus	6,865	285	282	259	4.0	4.0	3.8
Argyll & Bute	5,528	35	39	40	0.6	0.7	0.7
Clackmannanshire	2,856	26	23	16	0.9	0.8	0.6
Dumfries & Galloway	9,379	34	26	26	0.4	0.3	0.3
Dundee City	7,866	385	413	400	4.7	5.2	5.1
East Ayrshire	7,444	108	117	127	1.4	1.5	1.7
East Dunbartonshire	7,606	1,312	1,151	1,111	16.4	14.8	14.6
East Lothian	5,742	68	58	50	1.2	1.0	0.9
East Renfrewshire	7,827	1,464	1,558	1,600	19.1	20.1	20.4
Edinburgh City	19,084	573	560	591	2.9	2.9	3.1
Eilean Siar	1,790	1	1	-	0.1	0.1	-
Falkirk	8,951	68	62	62	0.7	0.7	0.7
Fife	21,491	42	41	40	0.2	0.2	0.2
Glasgow City	27,093	1,065	1,072	1,102	3.8	3.9	4.1
Highland	14,649	19	19	22	0.1	0.1	0.2
Inverclyde	4,930	30	35	31	0.6	0.7	0.6
Midlothian	5,252	355	350	321	6.5	6.4	6.1
Moray	5,726	30	32	28	0.5	0.5	0.5
North Ayrshire	8,541	43	37	50	0.5	0.4	0.6
North Lanarkshire	21,194	1,520	1,461	1,360	7.0	6.8	6.4
Orkney Islands	1,370	-	-	-	-	-	-
Perth & Kinross	7,731	90	109	104	1.1	1.4	1.3
Renfrewshire	10,944	536	532	535	4.7	4.8	4.9
Scottish Borders	6,765	31	31	25	0.4	0.4	0.4
Shetland Islands	1,543	-	-	-	-	-	-
South Ayrshire	6,845	307	303	305	4.3	4.4	4.5
South Lanarkshire	19,254	1,279	1,229	1,196	6.4	6.3	6.2
Stirling	5,957	643	624	604	10.7	10.4	10.1
West Dunbartonshire	5,804	443	425	417	7.3	7.2	7.2
West Lothian	11,080	86	97	92	0.8	0.9	0.8
All local authorities	301,596	11,803	11,593	11,431	3.8	3.8	3.8

(1) Figures do not include pupils in grant aided schools. Local authority of residence not identified for a further 1,805 pupils.

LOCAL AUTHORITY: SECONDARY

Table 7.12: Staying on rates of secondary pupils, 2008⁽¹⁾

	Female		Male		All pupils	
	S3-S5	S3-S6	S3-S5	S3-S6	S3-S5	S3-S6
Aberdeen City	69.6	41.5	66.2	35.2	67.9	38.2
Aberdeenshire	71.8	46.8	66.7	36.5	69.2	41.7
Angus	76.9	43.8	67.0	32.6	71.9	38.2
Argyll & Bute	85.2	62.3	85.5	50.2	85.3	56.1
Clackmannanshire	73.9	41.9	62.8	35.9	68.5	38.9
Dumfries & Galloway	77.9	52.3	66.9	40.4	72.4	46.2
Dundee City	74.2	43.5	62.6	35.3	68.3	39.4
East Ayrshire	82.0	43.4	74.5	32.1	78.1	37.9
East Dunbartonshire	86.5	63.5	83.2	57.7	84.8	60.5
East Lothian	76.4	48.7	70.2	45.5	73.1	47.1
East Renfrewshire	93.2	73.5	91.6	69.0	92.4	71.2
Edinburgh City	81.6	51.1	75.5	48.6	78.4	49.8
Eilean Siar	87.4	55.7	73.9	45.1	80.2	49.9
Falkirk	84.9	49.8	78.9	41.9	81.7	45.8
Fife	79.0	45.3	71.7	38.4	75.3	41.7
Glasgow City	76.1	40.7	70.7	32.5	73.4	36.6
Highland	84.7	57.4	79.6	46.4	82.1	51.7
Inverclyde	86.4	52.4	79.3	43.5	82.7	47.8
Midlothian	75.6	51.7	71.8	39.0	73.7	45.4
Moray	76.6	44.6	66.3	34.1	71.5	39.0
North Ayrshire	72.6	42.3	68.1	37.0	70.3	39.5
North Lanarkshire	81.1	43.9	73.2	35.9	77.0	39.8
Orkney Islands	73.6	46.8	59.1	41.5	66.7	44.0
Perth & Kinross	81.7	53.1	75.9	43.8	78.7	48.2
Renfrewshire	83.3	50.9	80.2	43.3	81.7	47.2
Scottish Borders	72.5	49.4	61.0	44.4	66.5	46.9
Shetland Islands	76.9	51.0	69.4	40.5	72.9	45.4
South Ayrshire	81.3	50.0	79.0	45.1	80.1	47.5
South Lanarkshire	83.5	46.6	77.7	39.5	80.6	42.9
Stirling	89.4	56.3	84.9	52.5	87.1	54.4
West Dunbartonshire	79.5	45.2	74.3	34.5	76.8	39.8
West Lothian	82.2	48.7	74.2	38.8	78.1	43.8
Scotland	79.8	48.5	73.5	40.8	76.6	44.6

(1) The S5 stage staying-on rates are based on S3 pupils 2 years earlier and S6 rates on S3 pupils 3 years earlier. Where significant numbers of pupils are taken on in S5 this can result in staying-on rates of over 100%. 1999-2007 stage roll data used to calculate staying-on rates includes pupils in special units. National averages have been calculated from the figures for all available local authority and grant-aided schools Data for Jordanhill is included in the Scotland figure but not in Glasgow City. National figures on page 33.

LOCAL AUTHORITY: SECONDARY

Table 7.13: Secondary pupils receiving Gaelic medium education, 2008

	Some subjects other than Gaelic taught through Gaelic ⁽¹⁾	Gaelic the only subject taught through Gaelic
Aberdeen City	5	24
Aberdeenshire	-	-
Angus	-	3
Argyll & Bute	-	22
Clackmannanshire	-	-
Dumfries & Galloway	-	-
Dundee City	-	-
East Ayrshire	5	1
East Dunbartonshire	-	7
East Lothian	-	-
East Renfrewshire	-	-
Edinburgh City	-	21
Eilean Siar	120	296
Falkirk	-	-
Fife	-	1
Glasgow City	116	-
Highland	278	511
Inverclyde	-	1
Midlothian	-	-
Moray	-	-
North Ayrshire	-	-
North Lanarkshire	35	-
Orkney Islands	-	-
Perth & Kinross	-	45
Renfrewshire	-	-
Scottish Borders	-	-
Shetland Islands	-	-
South Ayrshire	-	-
South Lanarkshire	-	16
Stirling	11	3
West Dunbartonshire	-	-
West Lothian	-	-
All local authorities	570	951
Grant aided	-	-

(1) Only this column is considered as Gaelic medium education
National figures on page 17.

Local Authority: SpecialTable 8.1: Publicly funded special schools, 2000-2008⁽¹⁾

	2000	2001	2002	2003	2004	2005	2006	2007	2008
Aberdeen City	11	11	9	11	11	11	11	11	11
Aberdeenshire	7	6	4	4	4	4	5	5	5
Angus	-	-	-	-	-	-	3	-	-
Argyll & Bute	3	3	3	3	3	3	3	3	3
Clackmannanshire	2	2	2	4	4	4	4	4	4
Dumfries & Galloway	3	3	3	4	4	2	2	2	4
Dundee City	1	1	1	1	1	1	1	1	1
East Ayrshire	4	4	7	7	7	7	7	7	7
East Dunbartonshire	8	8	7	5	5	7	6	6	6
East Lothian	-	-	-	-	-	1	1	1	2
East Renfrewshire	2	2	1	1	1	1	1	1	1
Edinburgh City	13	13	16	16	16	13	13	13	12
Eilean Siar	-	-	-	-	-	-	-	-	-
Falkirk	7	7	6	6	6	6	6	6	6
Fife	17	18	17	17	16	16	16	14	14
Glasgow City	49	51	51	47	46	47	47	46	54
Highland	3	4	4	6	6	5	5	5	5
Inverclyde	4	5	5	4	4	4	4	4	4
Midlothian	4	2	2	2	2	3	3	3	3
Moray	-	-	-	-	-	-	-	-	-
North Ayrshire	4	4	4	4	4	4	4	4	4
North Lanarkshire	11	11	11	11	11	11	11	11	11
Orkney Islands	1	1	1	1	-	-	-	-	-
Perth & Kinross	2	2	2	2	2	2	2	2	1
Renfrewshire	4	4	4	4	4	3	3	3	3
Scottish Borders	2	2	2	2	2	2	2	2	2
Shetland Islands	1	1	-	-	-	-	-	-	-
South Ayrshire	4	4	4	3	3	3	3	3	3
South Lanarkshire	9	9	9	9	9	9	9	9	9
Stirling	6	6	3	5	4	4	4	3	3
West Dunbartonshire	2	2	2	3	3	3	2	2	3
West Lothian	4	4	4	5	7	7	5	5	5
All local authorities	188	190	184	187	185	183	183	176	186
Grant aided	7	7	7	7	7	7	7	7	7

(1) See background note 5.5.
National figures on page 34.

LOCAL AUTHORITY: SPECIAL

Table 8.2: Pupils based in publicly funded special schools, 2003-2008⁽¹⁾

	2003	2004	2005	2006	2007	2008		
						Female	Male	Total
Aberdeen City	273	267	275	286	287	105	168	273
Aberdeenshire	275	253	243	234	230	59	169	228
Angus	#	#	#	-	#	#	#	#
Argyll & Bute	51	45	44	53	38	15	24	39
Clackmannanshire	37	37	37	38	42	11	24	35
Dumfries & Galloway	49	28	12	10	7	7	12	19
Dundee City	142	128	119	106	113	36	90	126
East Ayrshire	193	189	177	177	182	64	123	187
East Dunbartonshire	156	160	160	159	167	52	114	166
East Lothian	#	#	-	-	-	6	14	20
East Renfrewshire	51	51	52	55	66	21	41	62
Edinburgh City	751	735	732	727	696	169	552	721
Eilean Siar	#	#	#	#	#	#	#	#
Falkirk	227	210	192	172	159	58	115	173
Fife	157	159	147	141	118	43	75	118
Glasgow City	1,969	1,904	1,844	1,810	1,685	529	1,156	1,685
Highland	176	172	174	173	162	44	109	153
Inverclyde	146	140	131	143	141	40	102	142
Midlothian	166	166	165	115	93	31	66	97
Moray	#	#	#	#	#	#	#	#
North Ayrshire	171	175	167	165	171	59	106	165
North Lanarkshire	809	744	764	783	785	244	541	785
Orkney Islands	22	#	#	#	#	#	#	#
Perth & Kinross	55	54	53	50	50	12	38	50
Renfrewshire	322	305	299	299	318	123	206	329
Scottish Borders	-	-	-	-	-	-	-	-
Shetland Islands	#	#	#	#	#	#	#	#
South Ayrshire	89	85	89	94	95	28	64	92
South Lanarkshire	556	559	515	523	469	130	292	422
Stirling	39	41	34	30	28	12	25	37
West Dunbartonshire	133	124	125	104	97	41	96	137
West Lothian	252	279	230	182	188	67	132	199
All local authorities	7,267	7,010	6,780	6,629	6,387	2,006	4,454	6,460
Grant aided	413	379	360	346	322	109	187	296

(1) See background note 5.5.
National figures on page 34.

LOCAL AUTHORITY: SPECIAL

Table 8.3: Special schools and pupils by school denomination, 2008

	Schools		Pupil roll	
	Non-denominational ⁽¹⁾	Roman Catholic	Non-denominational	Roman Catholic
Aberdeen City	11	-	273	-
Aberdeenshire	5	-	228	-
Angus	-	-	-	-
Argyll & Bute	3	-	39	-
Clackmannanshire	4	-	35	-
Dumfries & Galloway	4	-	19	-
Dundee City	1	-	126	-
East Ayrshire	7	-	187	-
East Dunbartonshire	6	-	166	-
East Lothian	2	-	20	-
East Renfrewshire	1	-	62	-
Edinburgh City	12	-	721	-
Eilean Siar	-	-	-	-
Falkirk	6	-	173	-
Fife	14	-	118	-
Glasgow City	48	6	1,375	310
Highland	5	-	153	-
Inverclyde	4	-	142	-
Midlothian	3	-	97	-
Moray	-	-	-	-
North Ayrshire	4	-	165	-
North Lanarkshire	11	-	785	-
Orkney Islands	-	-	-	-
Perth & Kinross	1	-	50	-
Renfrewshire	3	-	329	-
Scottish Borders	2	-	-	-
Shetland Islands	-	-	-	-
South Ayrshire	3	-	92	-
South Lanarkshire	9	-	422	-
Stirling	3	-	37	-
West Dunbartonshire	3	-	137	-
West Lothian	5	-	199	-
All local authorities	180	6	6,150	310
Grant aided	7	-	296	-

(1) See background note 5.14.
National figures on page 34.

LOCAL AUTHORITY: SPECIAL

Table 8.4: Pupils based in special schools by age at 28th February 2009⁽¹⁾

	4	5	6	7	8	9	10	11
Aberdeen City	-	6	13	13	9	15	5	15
Aberdeenshire	-	8	15	13	16	19	21	27
Angus	#	#	#	#	#	#	#	#
Argyll & Bute	-	*	*	*	*	*	*	*
Clackmannanshire	-	*	*	*	*	8	*	*
Dumfries & Galloway	-	-	-	-	-	-	-	*
Dundee City	-	-----11-----		12	*	*	11	6
East Ayrshire	-	-----16-----		10	12	15	20	23
East Dunbartonshire	-	-----5-----		6	17	8	11	10
East Lothian	-	-	-	-	-	-	-	-
East Renfrewshire	-	*	*	6	7	5	7	5
Edinburgh City	-	19	27	27	46	43	52	74
Eilean Siar	#	#	#	#	#	#	#	#
Falkirk	-	5	*	*	7	*	5	6
Fife	-----7-----		9	*	9	13	8	12
Glasgow City	-	72	97	107	103	131	133	140
Highland	-----8-----		7	8	14	*	8	9
Inverclyde	-	*	9	*	10	12	10	10
Midlothian	-	8	*	5	6	5	8	*
Moray	#	#	#	#	#	#	#	#
North Ayrshire	-	*	7	*	8	12	13	14
North Lanarkshire	-	21	28	39	50	44	56	65
Orkney Islands	#	#	#	#	#	#	#	#
Perth & Kinross	-	*	*	-	*	*	*	*
Renfrewshire	-	11	22	15	18	11	17	34
Scottish Borders	-	-	-	-	-	-	-	-
Shetland Islands	#	#	#	#	#	#	#	#
South Ayrshire	-	*	*	6	11	9	5	13
South Lanarkshire	-	12	25	15	9	11	11	16
Stirling	-	*	*	7	9	6	*	*
West Dunbartonshire	-	-----9-----		5	*	15	*	5
West Lothian	-	8	10	14	9	11	13	11
All local authorities	-----216-----		319	328	383	408	424	508
Grant aided	*	*	6	9	8	11	13	31

(1) There were 14 pupils for whom age was outwith the standard range.
National figures on page 35.

LOCAL AUTHORITY: SPECIAL

Table 8.4 (cont.): Pupils based in special schools by age at 28th February 2009⁽¹⁾

12	13	14	15	16	17	18	19
18	30	37	49	28	23	-----12-----	Aberdeen City
12	19	27	16	15	-----20-----	-----20-----	Aberdeenshire
#	#	#	#	#	#	#	# Angus
*	*	*	*	*	8	*	- Argyll & Bute
*	*	5	*	*	-	-	- Clackmannanshire
*	*	*	*	*	*	*	* Dumfries & Galloway
14	20	11	7	7	-----19-----	-----19-----	Dundee City
18	15	11	9	14	-----24-----	-----24-----	East Ayrshire
14	11	14	24	23	6	17	- East Dunbartonshire
*	*	*	*	5	*	*	- East Lothian
*	*	7	*	6	*	*	* East Renfrewshire
64	66	90	98	77	32	6	- Edinburgh City
#	#	#	#	#	#	#	# Eilean Siar
15	21	22	23	33	20	6	- Falkirk
5	*	14	9	10	8	-----6-----	Fife
141	146	149	150	154	106	48	7 Glasgow City
10	13	13	18	10	13	13	* Highland
12	13	16	11	15	-----17-----	-----17-----	Inverclyde
9	8	8	14	9	-----11-----	-----11-----	Midlothian
#	#	#	#	#	#	#	# Moray
12	13	10	13	23	28	*	* North Ayrshire
86	81	94	102	68	42	9	- North Lanarkshire
#	#	#	#	#	#	#	# Orkney Islands
*	*	9	6	7	6	-	- Perth & Kinross
29	34	28	36	36	25	-----13-----	Renfrewshire
-	-	-	-	-	-	-	- Scottish Borders
#	#	#	#	#	#	#	# Shetland Islands
6	*	7	8	8	*	5	* South Ayrshire
45	57	53	55	70	42	1	- South Lanarkshire
*	*	*	*	*	*	*	- Stirling
14	10	14	24	15	11	-----10-----	West Dunbartonshire
25	24	33	19	12	-----10-----	-----10-----	- West Lothian
568	609	681	703	653	469	164	26 All local authorities
34	22	23	26	37	30	21	* Grant aided

LOCAL AUTHORITY: SPECIAL

Table 8.5: Looked after children in special schools by local authority of school, 2008⁽¹⁾

	All pupils	Children looked after:	
		At home	Away from home
Aberdeen City	273	17	11
Aberdeenshire	228	-----7-----	
Angus	#	#	#
Argyll & Bute	39	*	*
Clackmannanshire	35	26	7
Dumfries & Galloway	19	-----9-----	
Dundee City	126	-----7-----	
East Ayrshire	187	9	22
East Dunbartonshire	166	*	*
East Lothian	20	-	-
East Renfrewshire	62	-----6-----	
Edinburgh City	721	78	74
Eilean Siar	#	#	#
Falkirk	173	-----12-----	
Fife	118	*	*
Glasgow City	1,685	207	71
Highland	153	40	6
Inverclyde	142	-----10-----	
Midlothian	97	*	*
Moray	#	#	#
North Ayrshire	165	9	12
North Lanarkshire	785	76	28
Orkney Islands	#	#	#
Perth & Kinross	50	*	*
Renfrewshire	329	18	10
Scottish Borders	-	-	-
Shetland Islands	#	#	#
South Ayrshire	92	*	*
South Lanarkshire	422	20	15
Stirling	37	-	11
West Dunbartonshire	137	-----11-----	
West Lothian	199	33	10
All local authorities	6,460	576	315
Grant aided	296	-----78-----	

(1) See background note 5.12. For some local authorities data on category of care has been merged for disclosure purposes. National figures on page 12.

LOCAL AUTHORITY: SPECIAL

Table 8.6: Pupils based in special schools with Additional Support Needs, 2008

	with RoN, CSP and/or IEP	with RoN ⁽¹⁾	with CSP ⁽¹⁾	with IEP only	Percentage of pupils with RoN, CSP and/or IEP
Aberdeen City	273	89	35	149	100.0
Aberdeenshire	228	110	21	97	100.0
Angus	#	#	#	#	#
Argyll & Bute	36	18	11	7	92.3
Clackmannanshire	35	12	9	14	100.0
Dumfries & Galloway	19	*	14	*	100.0
Dundee City	126	*	99	*	100.0
East Ayrshire	187	-	28	159	100.0
East Dunbartonshire	166	62	46	58	100.0
East Lothian	20	12	*	*	100.0
East Renfrewshire	62	*	*	47	100.0
Edinburgh City	713	318	70	325	98.9
Eilean Siar	#	#	#	#	#
Falkirk	173	88	28	57	100.0
Fife	118	39	22	57	100.0
Glasgow City	1,684	630	125	929	99.9
Highland	153	23	17	113	100.0
Inverclyde	142	73	18	51	100.0
Midlothian	97	21	11	65	100.0
Moray	#	#	#	#	#
North Ayrshire	165	93	15	57	100.0
North Lanarkshire	785	314	83	388	100.0
Orkney Islands	#	#	#	#	#
Perth & Kinross	50	23	22	5	100.0
Renfrewshire	329	5	146	178	100.0
Scottish Borders	-	-	-	-	-
Shetland Islands	#	#	#	#	#
South Ayrshire	92	18	20	54	100.0
South Lanarkshire	422	246	20	156	100.0
Stirling	37	-	22	15	100.0
West Dunbartonshire	137	36	21	80	100.0
West Lothian	199	44	60	95	100.0
All local authorities	6,448	2,280	984	3,184	99.8
Grant aided	288	169	64	55	97.3

(1) Irrespective of whether they have an IEP

LOCAL AUTHORITY: SPECIAL

Table 8.7: Reasons for support for pupils based in special schools with Additional Support Needs, 2008

	Pupils for whom reason for support is reported	Learning disability	Dyslexia	Other specific learning difficulty (e.g. numeric)	Other moderate learning difficulty	Visual impairment	Hearing impairment	Deafblind	Physical or motor impairment
Aberdeen City	273	225	-	30	-	23	9	*	61
Aberdeenshire	228	181	-	-	*	8	-	*	48
Angus	#	#	#	#	#	#	#	#	#
Argyll & Bute	34	6	-	-	3	-	-	-	*
Clackmannanshire	35	25	-	*	-	9	-	-	5
Dumfries & Galloway	19	16	-	6	-	5	-	*	9
Dundee City	126	75	-	*	*	19	*	-	29
East Ayrshire	187	133	-	-	15	7	*	-	30
East Dunbartonshire	166	83	*	*	50	24	*	-	36
East Lothian	20	15	-	*	-	*	-	-	-
East Renfrewshire	62	27	-	-	*	*	-	-	10
Edinburgh, City of	713	180	-	*	170	26	13	-	113
Eilean Siar	#	#	#	#	#	#	#	#	#
Falkirk	151	131	-	*	-	10	17	*	19
Fife	118	100	-	-	-	30	6	*	50
Glasgow City	1,684	922	7	*	313	114	67	*	218
Highland	153	123	-	-	-	*	*	*	6
Inverclyde	142	127	-	*	60	15	13	-	27
Midlothian	97	97	-	-	-	5	*	-	37
Moray	#	#	#	#	#	#	#	#	#
North Ayrshire	165	80	-	*	39	13	7	-	28
North Lanarkshire	785	555	-	*	-	35	8	-	104
Orkney Islands	#	#	#	#	#	#	#	#	#
Perth & Kinross	50	*	-	*	-	-	-	-	5
Renfrewshire	329	272	-	-	*	26	14	-	48
Scottish Borders	-	-	-	-	-	-	-	-	-
Shetland Islands	#	#	#	#	#	#	#	#	#
South Ayrshire	92	28	-	*	48	-	*	-	*
South Lanarkshire	422	320	*	23	*	32	21	-	42
Stirling	37	28	-	-	-	-	-	-	-
West Dunbartonshire	137	48	-	-	51	*	*	-	13
West Lothian	199	144	-	-	-	-	*	-	5
Grant aided ⁽¹⁾	296	192	*	14	16	118	50	*	143

National figures on page 36 .

LOCAL AUTHORITY: SPECIAL

Table 8.7 (cont.): Reasons for support for pupils based in special schools with Additional Support Needs, 2008

Language or speech disorder	Autistic spectrum disorder	Social, emotional and behavioural difficulty	Physical health problem	Mental health problem	Interrupted learning	English as an additional language	Looked after	More able pupil	Other	
111	55	81	36	7	*	*	10	-	-	Aberdeen City
78	71	21	25	*	-	*	*	*	22	Aberdeenshire
#	#	#	#	#	#	#	#	#	#	Angus
-	*	-	-	-	-	-	*	-	18	Argyll & Bute
20	13	5	6	-	-	-	5	-	*	Clackmannanshire
11	9	5	5	-	-	-	6	-	-	Dumfries & Galloway
40	40	23	17	*	-	*	*	-	5	Dundee City
19	26	21	9	*	-	*	15	*	*	East Ayrshire
20	53	14	17	*	-	-	-	-	*	East Dunbartonshire
-	*	-	-	-	-	-	-	-	-	East Lothian
-	23	-	-	-	-	-	-	-	-	East Renfrewshire
89	169	166	19	*	-	-	5	-	43	Edinburgh, City of
#	#	#	#	#	#	#	#	#	#	Eilean Siar
6	11	5	10	-	-	*	*	-	-	Falkirk
48	33	*	41	-	*	-	*	-	*	Fife
182	324	231	131	18	*	59	27	-	26	Glasgow City
*	26	12	19	-	-	-	*	-	-	Highland
20	28	19	6	-	-	-	*	-	5	Inverclyde
49	25	6	*	-	-	-	*	-	-	Midlothian
#	#	#	#	#	#	#	#	#	#	Moray
40	39	29	13	-	-	-	*	-	9	North Ayrshire
86	64	189	30	-	-	*	*	-	*	North Lanarkshire
#	#	#	#	#	#	#	#	#	#	Orkney Islands
*	7	*	*	*	-	*	*	-	31	Perth & Kinross
75	71	130	39	-	-	*	*	-	*	Renfrewshire
-	-	-	-	-	-	-	-	-	-	Scottish Borders
#	#	#	#	#	#	#	#	#	#	Shetland Islands
-	*	*	-	-	-	-	*	*	9	South Ayrshire
72	44	78	44	-	*	*	*	-	-	South Lanarkshire
-	-	9	-	-	-	-	-	-	*	Stirling
6	19	28	*	-	-	-	-	-	-	West Dunbartonshire
-	10	54	*	-	-	-	*	-	-	West Lothian
173	37	40	69	*	21	*	37	-	-	Grant aided

LOCAL AUTHORITY: SPECIAL

Table 8.8: Nature of support for pupils based in special schools with Additional Support Needs, 2008

	Pupils for whom nature of support is reported	Education: Additional Specialist teaching support	Education: Additional Specialist non-teaching support	Social Work services	Health services	Voluntary	Other
Aberdeen City	241	117	133	53	119	20	18
Aberdeenshire	228	205	120	107	118	*	25
Angus	#	#	#	#	#	#	#
Argyll & Bute	34	5	*	12	13	-	13
Clackmannanshire	35	16	*	16	26	*	9
Dumfries & Galloway	19	19	18	14	18	-	-
Dundee City	126	113	78	16	82	12	*
East Ayrshire	187	182	36	50	67	*	5
East Dunbartonshire	166	164	120	59	108	*	5
East Lothian	20	20	-	-	-	-	-
East Renfrewshire	62	62	-	-	-	-	-
Edinburgh City	713	498	308	113	75	*	85
Eilean Siar	#	#	#	#	#	#	#
Falkirk	147	142	64	*	14	-	-
Fife	118	104	98	20	48	*	*
Glasgow City	1,684	1,443	548	275	515	21	119
Highland	146	146	109	20	33	-	-
Inverclyde	142	63	105	47	105	*	22
Midlothian	97	97	97	23	94	-	*
Moray	#	#	#	#	#	#	#
North Ayrshire	165	115	73	16	50	-	-
North Lanarkshire	785	596	162	69	190	-	30
Orkney Islands	#	#	#	#	#	#	#
Perth & Kinross	50	50	50	16	28	-	13
Renfrewshire	329	316	256	134	207	-	-
Scottish Borders	-	-	-	-	-	-	-
Shetland Islands	#	#	#	#	#	#	#
South Ayrshire	92	36	19	57	-	-	-
South Lanarkshire	422	392	123	82	108	-	*
Stirling	37	37	30	24	28	*	*
West Dunbartonshire	137	116	91	25	6	-	-
West Lothian	199	199	51	22	12	-	-
All local authorities	6,381	5,253	2,710	1,281	2,064	68	356
Grant aided(1)	296	64	64	*	7	-	16

National figures on page 36.

LOCAL AUTHORITY: SPECIAL

Table 8.9: Pupils in special schools who are assessed or declared as disabled⁽¹⁾, 2008

	All pupils	Assessed as disabled ⁽²⁾	Declared as disabled but not assessed	Assessed and/or declared as disabled	
				Number	Rate per 1,000 pupils
Aberdeen City	273	231	-	231	846
Aberdeenshire	228	209	*	211	925
Angus	#	#	#	#	#
Argyll & Bute	39	7	18	25	641
Clackmannanshire	35	28	-	28	800
Dumfries & Galloway	19	18	-	18	947
Dundee City	126	65	28	93	738
East Ayrshire	187	6	18	24	128
East Dunbartonshire	166	130	10	140	843
East Lothian	20	18	-	18	900
East Renfrewshire	62	-	22	22	355
Edinburgh City	721	499	18	517	717
Eilean Siar	#	#	#	#	#
Falkirk	173	113	7	120	694
Fife	118	94	*	96	814
Glasgow City	1,685	167	261	428	254
Highland	153	121	-	121	791
Inverclyde	142	135	-	135	951
Midlothian	97	82	*	84	866
Moray	#	#	#	#	#
North Ayrshire	165	94	5	99	600
North Lanarkshire	785	251	50	301	383
Orkney Islands	#	#	#	#	#
Perth & Kinross	50	46	*	48	960
Renfrewshire	329	143	19	162	492
Scottish Borders	-	-	-	-	-
Shetland Islands	#	#	#	#	#
South Ayrshire	92	11	60	71	772
South Lanarkshire	422	242	26	268	635
Stirling	37	28	-	28	757
West Dunbartonshire	137	16	16	32	234
West Lothian	199	45	28	73	367
All local authorities	6,460	2,799	594	3,393	525

(1) Does not include grant aided schools. There are wide variations in the extent to which pupils with disabilities have been identified in different local authorities and the information should not be considered complete. Data may be subject to a small amount of data-swapping for disclosure purposes. See background note 7.2

(2) Irrespective of whether a pupil is declared as disabled.

National figures on page 37.

Table 8.10: Pupils based in special schools by ethnicity⁽¹⁾, 2008

				Of which percentage		
	Minority ethnic ⁽²⁾	White other	Not known	Minority ethnic ⁽²⁾	White other	Not known
Aberdeen City	16	2	18	5.9	0.7	6.6
Aberdeenshire	4	7	5	1.8	3.1	2.2
Angus	#	#	#	#	#	#
Argyll & Bute	-	-	3	-	-	7.7
Clackmannanshire	*	*	*	*	*	*
Dumfries & Galloway	2	1	-	10.5	5.3	-
Dundee City	9	8	3	7.1	6.3	2.4
East Ayrshire	*	*	*	*	*	*
East Dunbartonshire	6	5	1	3.6	3.0	0.6
East Lothian	-	-	10	-	-	50.0
East Renfrewshire	*	*	*	*	*	*
Edinburgh City	61	23	10	8.5	3.2	1.4
Eilean Siar	#	#	#	#	#	#
Falkirk	6	-	4	3.5	-	2.3
Fife	6	-	6	5.1	-	5.1
Glasgow City	198	43	139	11.8	2.6	8.2
Highland	3	4	15	2.0	2.6	9.8
Inverclyde	*	*	*	*	*	*
Midlothian	*	*	*	*	*	*
Moray	#	#	#	#	#	#
North Ayrshire	*	*	*	*	*	*
North Lanarkshire	12	22	13	1.5	2.8	1.7
Orkney Islands	#	#	#	#	#	#
Perth & Kinross	*	*	*	*	*	*
Renfrewshire	4	5	5	1.2	1.5	1.5
Scottish Borders	-	-	-	-	-	-
Shetland Islands	#	#	#	#	#	#
South Ayrshire	*	*	*	*	*	*
South Lanarkshire	12	*	*	2.8	*	*
Stirling	*	*	*	*	*	*
West Dunbartonshire	4	3	6	2.9	2.2	4.4
West Lothian	8	8	11	4.0	4.0	5.5
All local authorities	374	147	283	5.8	2.3	4.4

(1) Not collected for grant aided schools. Where local authority figures are published in table 5.7, figures marked * have been assumed to be 2. However the totals in this table, and elsewhere, are based on the correct data.

(2) Percentage of those with known ethnic background. Minority ethnic includes all categories other than White-UK and White-Other.

National figures on page 37.

LOCAL AUTHORITY: SPECIAL

Table 8.11: Pupils based in special schools who attend schools outwith their local authority of residence, 2006-2008⁽¹⁾

Local authority of residence	Total pupils 2008	Number going to a school outwith area			% going to a school outwith area		
		2006	2007	2008	2006	2007	2008
Aberdeen City	264	-	1	-	#	-	#
Aberdeenshire	228	7	7	5	3	3	2
Angus	18	18	19	18	100	100	100
Argyll & Bute	38	10	4	4	18	11	11
Clackmannanshire	36	6	4	3	14	9	8
Dumfries & Galloway	20	-	-	1	#	#	5
Dundee City	104	-	-	-	#	#	#
East Ayrshire	187	6	6	3	3	3	2
East Dunbartonshire	162	16	12	6	10	7	4
East Lothian	37	27	25	18	100	100	49
East Renfrewshire	75	21	18	16	29	23	21
Edinburgh City	667	7	7	4	1	1	1
Eilean Siar	-	-	-	-	#	#	#
Falkirk	175	10	12	11	6	7	6
Fife	119	1	3	3	1	2	3
Glasgow City	1,568	26	24	19	2	2	1
Highland	151	-	-	-	#	#	#
Inverclyde	139	2	4	4	1	3	3
Midlothian	103	15	13	13	13	14	13
Moray	-	-	-	-	#	#	#
North Ayrshire	165	7	8	4	4	5	2
North Lanarkshire	786	42	38	26	5	5	3
Orkney Islands	-	-	-	-	#	#	#
Perth & Kinross	54	2	2	4	4	4	7
Renfrewshire	315	14	13	12	5	4	4
Scottish Borders	4	2	5	4	100	100	100
Shetland Islands	-	-	-	-	#	#	#
South Ayrshire	88	6	3	2	7	4	2
South Lanarkshire	455	53	56	47	10	11	10
Stirling	40	7	6	5	20	19	13
West Dunbartonshire	151	16	18	19	15	17	13
West Lothian	209	12	9	12	6	5	6
All local authorities	6,358	333	317	263	5	5	4

(1) Figures do not include pupils in grant aided schools. Local authority of residence not identified for a further 102 pupils.

LOCAL AUTHORITY: SPECIAL

Table 8.12: Pupils based in special schools who attend schools but live outwith the local authority, 2006-2008⁽¹⁾

Local authority of school	Total pupils 2008	Number coming from outwith area			% coming from outwith area		
		2006	2007	2008	2006	2007	2008
Aberdeen City	269	7	7	5	2	2	2
Aberdeenshire	224	1	2	1	-	1	0
Angus	-	-	-	-	#	#	#
Argyll & Bute	39	6	5	5	11	13	13
Clackmannanshire	34	1	1	1	3	2	3
Dumfries & Galloway	19	-	-	-	-	-	-
Dundee City	125	19	20	21	22	18	17
East Ayrshire	186	3	3	2	2	2	1
East Dunbartonshire	166	16	13	10	10	8	6
East Lothian	19	-	-	-	-	-	-
East Renfrewshire	62	3	5	3	5	8	5
Edinburgh City	711	46	51	48	6	7	7
Eilean Siar	-	-	-	-	#	#	#
Falkirk	170	10	8	6	6	5	4
Fife	117	-	-	1	-	-	1
Glasgow City	1,637	118	112	88	7	7	5
Highland	151	-	-	-	-	-	-
Inverclyde	142	9	7	7	6	5	5
Midlothian	97	14	10	7	12	11	7
Moray	-	-	-	-	#	#	#
North Ayrshire	164	4	4	3	2	2	2
North Lanarkshire	779	22	23	19	3	3	2
Orkney Islands	-	-	-	-	#	#	#
Perth & Kinross	50	-	-	-	-	-	-
Renfrewshire	323	22	24	20	7	8	6
Scottish Borders	-	-	-	-	-	-	-
Shetland Islands	-	-	-	-	#	#	#
South Ayrshire	88	3	2	2	3	2	2
South Lanarkshire	414	14	11	6	3	2	1
Stirling	36	2	1	1	7	4	3
West Dunbartonshire	137	9	4	5	9	4	4
West Lothian	199	4	4	2	2	2	1
All local authorities	6,358	333	317	263	5	5	4

(1) Figures do not include pupils in grant aided schools. Local authority of residence not identified for a further 102 pupils

Index

	Background note	Tables	Pages
Additional support needs	5.8-5.11	1.5, Chart 2, 1.6-1.8, Chart 3, 2.5-2.7, 3.5-3.7, 4.4-4.6, 6.10-6.12, 7.5-7.7, 8.6-8.8	12-14, 21-22, 30-31, 35-36, 57-60, 69-72, 85-88
Age		2.4, 3.4, 4.3, 5.5, 8.4	20, 29,35, 42, 82
Asylum seekers		1.12, 5.6	17, 43
Class sizes	5.2	2.10-2.21, 6.5-6.7	24-27, 52-54
Composite classes	5.3	2.10-2.20, 6.5-6.6	24-27, 52-53
Denominational schools	5.14	1.15, 2.2, 3.2, 4.2, 6.3, 7.3, 8.3	18, 19, 28, 34, 50, 67, 81
Deprivation		1.3, Chart 3, 5.10	12, 13, 47
Disability		1.9, 2.8, 3.8, 4.7, 5.4, 8.9	15, 23, 32, 37, 41, 89
English as an additional language		5.9	46
Ethnicity/National identity	5.4, 7.1	1.10, 1.11, 2.9, 3.9, 4.9, 5.7 6.13 7.9, 8.10	15, 16, 23, 32, 37, 44, 61, 74, 90
Free meal registration	5.7	1.10	15
Gaelic medium education		1.13, 6.16 7.13	17, 64, 78
Gender		1.8-1.9, 1.10, 2.5, 2.7-2.8, 3.5, 3.7-3.8, 4.3, 4.6-4.7, 6.2, 7.2, 8.2	14, 15, 21-23, 30-32, 35, 36, 37, 49, 66, 80
Grant aided schools	5.6	5.1-5.2, 5.7,6.1-6.13,6.16,7.1-7.9, 7.13, 8.1-8.8	38-39, 44, 48-61, 64, 65-74, 78, 79-88
Home language		1.14, 5.8	18, 45
Independent schools	2.1		
Local authorities		5.1-8.12, Map	38-92, 93
Local authority of residence		5.5, 6.14 7.10, 8.11	42, 62, 75, 91
Looked after (by local authority) children	5.12	1.4, Chart 3, 5.5,6.9,7.8, 8.5	12, 13, 42, 56, 73, 84
Mainstreaming		1.5, Chart 2, 1.6, 2.5, 3.5, 4.4	12, 13, 21, 30, 35
Primary schools		1.1, 1.2, 1.5, Chart 1, Chart 2, 2.1-2.21 6.1-6.16	11, 12, 19-27, 48-64
Refugees		1.12, 5.6	17, 43
Residential students		4.8	37
Roman Catholic schools		1.15, 2.2, 3.2, 4.2, 6.3, 7.3, 8.3	18, 19, 28, 34, 50, 67, 81
Rural schools	5.13	1.3	12
School numbers		1.1-1.2, 2.1-2.2, 3.1-3.2, 4.1-4.2, 5.1, 6.1, 6.3, 7.1, 7.3, 8.1, 8.3	11, 19, 28, 34, 38, 48, 50, 65, 67, 79, 81
School size		1.2	11
Secondary schools		1.1, 1.2, 1.5, Chart 1, Chart 2, 3.1-3.10, 7.1-7.13	11, 12, 28-33, 65-78
Special schools	5.5, 5.6	1.1, 1.2, Chart 1, 4.1-4.9, 8.1-8.12	11, 34-37, 79-92
Stage		2.3-2.4, 2.9-2.11, 2.15-2.20, 3.3-3.4, 3.9, 6.4, 6.6-6.7, 7.4	19-20, 23-24, 25-27, 28-29, 32, 51, 53-54, 68
Staying on rates		3.10, 7.12	33, 77
Urban schools	5.13	1.3	12

SCOTTISH GOVERNMENT STATISTICIAN GROUP

OUR AIM

To provide relevant and reliable information, analysis and advice that meet the needs of government, business and the people of Scotland.

OBJECTIVES

1. To produce statistics and analysis relevant to user needs by
 - Developing our understanding of customer requirements to ensure statistics are kept relevant and analysis is well targeted;
 - Developing the range of statistics and analysis we produce;
 - Where practicable improving timeliness;
 - Providing more statistics disaggregated by age, gender and ethnicity;
 - Developing more data for small areas through the Neighbourhood Statistics project;
 - Contributing to production of comparable statistics across the UK and internationally.
2. To ensure effective use of our statistics by
 - Contributing more directly to policy processes inside and where possible outside government;
 - Improving access to and presentation of data and analysis;
 - Improving the advice provided on statistics.
3. To work effectively with users and providers by
 - Maintaining arrangements to consult and involve users and providers;
 - Involving users and providers in planning developments in outputs and processes;
 - Minimising the burden on data providers through dropping or streamlining collections as appropriate, to ensure the benefits of the information justify the costs of collection.
4. To develop the quality of statistics by
 - Assuring and improving quality as an integral part of data collection and analysis and through regular reviews in line with National Statistics quality strategy;
 - Developing statistical methods, systems and classifications;
 - Working with the rest of the Government Statistical Service to develop joint approaches/solutions where appropriate.
5. To assure the integrity of statistics by
 - Maintaining and promoting integrity through implementation of the National Statistics Code of Practice and related protocols;
 - Safeguarding the confidentiality of data subjects.
6. To ensure the efficient and effective delivery of statistics products and services by
 - Making best use of all sources including administrative sources;
 - Working with other analysts to maximise the contribution of our own and other analysts' work;
 - Ensuring value for money;
 - Making best use of Information and Communications Technology;
 - Ensuring effective communication within the Statistician Group.
7. To develop our workforce and competences
 - Ensuring recruitment of staff with the necessary skills and potential;
 - Ensuring development of expertise amongst existing staff;
 - Promoting and upholding the standards of the statistics profession.

This is a National Statistics publication

"This is a National Statistics publication. It has been produced to high professional standards set out in the National Statistics Code of Practice Protocol - see www.statistics.gov.uk/about_ns/cop/default.asp

These statistics undergo regular quality assurance reviews to ensure that they meet customer needs. They are produced free from any political interference."

Details of pre-release access will be provided in the Scottish Government Statistics Website under 'Forthcoming Publications'

Correspondence and enquiries

Enquiries on Pupil Census Statistical Publications should be addressed to:

Paul Gona
Education Analytical Services
Scottish Government Education Directorate
Room 1-B, Victoria Quay
Edinburgh, EH6 6QQ
Telephone: 0131 244 0183; Fax: 0131 244 0354
e-mail: school.stats@scotland.gsi.gov.uk

General enquiries on Scottish Government statistics can be addressed to:

Ryan Stewart
Office of the Chief Statistician
Scottish Government
3 Floor West Rear, St Andrews House
EDINBURGH EH1 3DG
Telephone: (0131) 244 0442; Fax: (0131) 244 0335
e-mail: statistics.enquiries@scotland.gsi.gov.uk

Advice on specific areas of Scottish Government statistical work can be obtained from staff at the telephone numbers given below:

Scottish Government Statistics contacts		Other contacts for Scottish statistics	
Schools – pupils, teachers and schools	(0131) 244 1689	Forestry Commission	(0131) 314 6337
Schools –Survey of Achievement	(0131) 244 0893	The Scottish Funding Councils for Higher and Further Education	(0131) 313 6575
Further and Higher Education	(0141) 242 0273	General Register Office for Scotland - Vital statistics and publications	(0131) 314 4243
The Economy	(0131) 244 2234	- Population statistics, census statistics or digital boundary products	(0131) 314 4254
Labour market	(0141) 242 5446		
Business	(0141) 242 5446		
Income, Tax and Benefits	(0131) 244 2583		
Local government finance	(0131) 244 7033		
Environment	(0131) 244 0445		
Planning	(0131) 244 0439		
Equality	(0131) 244 0324		
Housing	(0131) 244 7236		
Transport	(0131) 244 7255		
Health	(0131) 244 3432		
Community Care	(0131) 244 3777		
Social Justice	(0131) 244 0442		
Scottish Government personnel	(0131) 244 3926		
Agricultural census and labour force	(0131) 244 6150		
Fisheries	(0131) 244 6441		
Courts and law	(0131) 244 2227		
Recorded crime	(0131) 244 2635		
Prisons	(0131) 244 2147		

For **general enquiries about National Statistics** in the United Kingdom Government contact the National Statistics Public Enquiry Service on

020 7533 5888

minicom: 01633 812399

Email: info@statistics.gov.uk

Fax: 01633 652747

Letters: room DG/18, 1 Drummond Gate, LONDON SW1V 2QQ

You can also find National Statistics on the internet - go to **www.statistics.gov.uk**

If you would like to be consulted about new or existing statistical collections or receive notification of forthcoming statistical publications, please register your interest on the Scottish Government ScotStat website at **www.scotland.gov.uk/scotstat**

Current contact points, e-mail addresses and the publications listed below as well as a range of other statistical publications can be found on the Scottish Government Web site at **www.scotland.gov.uk/stats**

Further information on the General Register Office for Scotland is available on the website **www.gro-scotland.gov.uk**

Most recent Education Analytical Services Division's Statistical Publications relating to the Education and Training theme

Title	Last published
Education Maintenance Allowances, 2007-08	27 January 2009
Exclusions from Schools, 2007/08	26 January 2009
Attendance and absence in Scottish Schools, 2007/08	11 December 2008
Destinations of Leavers from Scottish Schools, 2007/08	10 December 2008
Children Educated Outwith School and Pupil Projections, 2008	21 November 2008

Additional copies of this publication are available from **Education Analytical Services**, Scottish Government, Room 1-B South, Victoria Quay, Edinburgh EH6 6QQ, Telephone: 0131 244 0183.

Complaints and suggestions

If you are not satisfied with our service, please write to the Chief Statistician, Mr Rob Wishart, 3R02, St Andrews House, Edinburgh, EH1 3DG, Telephone: (0131) 244 0302, e-mail rob.wishart@scotland.gsi.gov.uk. We also welcome any comments or suggestions that would help us to improve our standards of service.

ISSN 0 143-599X
ISBN 978-0-7559-7437-5

Crown Copyright

Brief extracts from the Crown Copyright material in this publication may be reproduced provided the source is fully acknowledged.

ISBN 978-0-7559-7437-5



9 780755 974375