



# Statistics Publication Notice

Education Series

ISSN 1479-7569

## EXCLUSIONS FROM SCHOOLS, 2002/03

February 17, 2004 (revised version September 2 2004)<sup>1</sup>

### A Scottish Executive National Statistics Publication

The results of the survey on exclusions from schools are published today by the Scottish Executive Education Department. The results relate to the school year 2002/03. Exclusions, in this context, include both temporary exclusions and pupils removed from the register.

Most of the data refers to cases of exclusion, which should not be confused with the number of pupils excluded, as some pupils were excluded more than once during the year.

The main findings are:

- During 2002/03 there were **36,496 exclusions** from local authority primary, secondary and special schools in Scotland, a decrease of three per cent from 2001/02. Over 99 per cent of all exclusions were temporary. In 292 cases, pupils were removed from the register of the school, a decrease of 12 per cent from the 2001/02 figure of 332. Overall, male pupils accounted for 81 per cent of exclusions. (Tables 1 and 4)
- Eleven per cent of all exclusions were from **primary** schools. There were 10 exclusions per 1,000 pupils in primary schools in 2002/03. Exclusions in primary school decreased from around 4,500 in 1999/00 to 4,131 in 2002/03. (Tables 2a, 3a and 14)
- Eighty-five per cent of all exclusions were from **secondary** schools. In 2002/03 there were 98 exclusions per 1,000 pupils in secondary schools. Exclusion rates peaked during S3, with 170 exclusions per 1,000 pupils. Exclusions in secondary schools decreased from 33,197 in 1999/2000 to 31,055 in 2002/03. (Tables 2b, 3b, and 14)
- Four per cent of all exclusions in 2002/03 were from **special** schools. There were 173 exclusions per 1,000 pupils in special schools. Exclusions in special schools have generally increased since 1999/2000. (Tables 2c, 3c and 14)
- Eighty-eight per cent of all temporary exclusions lasted one week or less. (Table 6)

---

<sup>1</sup> This publication has been revised to take account of amended exclusion figures for 1998/99 – see background note 7 for further information. Figures for other years have not changed.

- Some pupils were excluded more than once during the year. In 2002/03, 20,180 different pupils accounted for the 36,204 temporary exclusions (**three per cent of pupils** in local authority schools). Of these pupils, 12,505 were temporarily excluded on one occasion only and 3,850 were temporarily excluded twice. Fifty-one pupils were temporarily excluded 10 times or more. (Table 7)
- Comparison with the overall school population shows that pupils entitled to free school meals, pupils with a Record of Needs, or pupils looked after by the local authority, all had higher exclusion rates than other pupils. (Table 9)
- Twenty-three per cent of exclusions were due to general or persistent disobedience (where the reasons were known); 18 per cent involved verbal abuse of members of staff; and 13 per cent involved physical abuse of fellow pupils. (Table 10)
- Overall, there were 50 exclusions per 1,000 pupils from local authority primary, secondary, and special schools in Scotland in 2002/03. This ranged from 91 per 1,000 in Dundee City to seven per 1,000 in Eilean Siar and Shetland Islands. (Table 13)

## CONTENTS

### TABLES

- Table 1 - Exclusions by type of exclusion, 1998/99 to 2002/03
- Table 2 - Exclusions by sector, stage and gender, 2002/03
- Table 3 - Exclusions by sector and stage, 1999/2000 to 2002/03
- Table 4 - Exclusions by sector and gender, 1999/2000 to 2002/03
- Table 5 - Number of half days lost due to removal from the register, 2002/03
- 
- Table 6 - Temporary exclusions by duration, 2002/03
- Table 7 - Number of times that pupils were temporarily excluded, 2002/03
- Table 8 - Exclusions by ethnic background of pupils, 2002/03
- Table 9 - Exclusions amongst particular groups of pupils, 2002/03
- Table 10 - Exclusions by type and reason for exclusion, 2002/03
- 
- Table 11 - Exclusions by reason for exclusion 1998/99 to 2002/03
- Table 12 - Appeals against exclusions, 1998/99 to 2002/03
- Table 13 - Exclusions by type of exclusion and local authority, 2002/03
- Table 14 - Exclusions by school sector and local authority, 2002/03
- Table 15 - Temporary exclusions and number of different pupils temporarily excluded by local authority, 2002/03
- 
- Table 16 - Temporary exclusions by local authority, 1998/99 to 2002/03
- Table 17 - Removals from the register by local authority, 1999/2000 to 2002/03
- Table 18 - Total exclusions by local authority, 1999/2000 to 2002/03

### CHARTS

- Chart 1 - Exclusions by stage, 2002/03
- Chart 2 - Exclusions by school sector, 1999/2000 to 2002/03
- Chart 3 - Exclusions by gender, 1999/2000 to 2002/03
- Chart 4 - Temporary exclusions by duration, 2002/03
- Chart 5 - Number of times that pupils were temporarily excluded, 2002/03

## BACKGROUND NOTES

1. Under Circulars 10/93 and 1/95, local authorities are required each year to collect certain statistics from schools on exclusions. The statistics relate to half-days of temporary exclusions and number of pupils removed from the register (previously known as 'permanent' exclusions).
2. An exclusion is temporary when a pupil is excluded from a school but remains on the register of that school because they are expected to return when the exclusion period is completed. The term 'removed from the register' refers to a pupil who is excluded and their name removed from the school register. Such a pupil would then be educated at another school or via some other form of provision. The process of being removed and subsequently receiving education elsewhere can either take place with or without a break in school attendance. Local authorities have different procedures for use of temporary exclusions and removal from the register with and without a break in attendance.
3. In April 1998, the then Scottish Office issued Circular 2/98 to local authorities, informing them of a formal requirement to report, record and monitor additional information on exclusions from schools starting from the 1998/99 school year. Following the issue of Circular 2/98, the Scottish Executive collected and collated this additional information from local authorities for the first time in September 1999.
4. Following an answer to a Parliamentary Question in June 2003, the Executive issued Circular 8/03 in November 2003, which gave revised guidance and formally informed local authorities that the target to reduce exclusions had been dropped. Exclusions in this publication pre-date this circular.
5. This survey covers local authority primary, secondary and special schools. There was one self-governing primary school in 2002/03 which was not covered by this survey.
6. The following symbol is used: - = zero or rounds to zero
7. **Revision September 2004:** It has recently come to our attention that the temporary exclusions figures for Renfrewshire authority in 1998/99 were revised in 1999/2000 (increasing from 474 to 2,700). In addition, the number of removals from the register for Scotland in 1998/99 (and therefore the total number of exclusions in 1998/99) were now thought to be an undercount and therefore not comparable with subsequent years. Tables 1 and 16 have been altered to take account of the revised temporary exclusions figures and 1998/99 data has been removed from tables 3, 4, 17 and 18, and charts 2 and 3.
8. **This is a National Statistics publication.** National Statistics are produced to high professional standards set out in the National Statistics Code of Practice. They undergo regular quality assurance reviews to ensure that they meet customer needs. They are produced free from any political interference
9. All tables are available on the Scottish Executive website at <http://www.scotland.gov.uk/stats/bulletins/00321-00.asp>

## Enquiries

9. Public enquiries (non-media) about the information contained in this notice should be addressed to Bianca Heggie, Education and Children Statistics Unit, Room 1A, Victoria Quay, Edinburgh EH6 6QQ. Telephone 0131 244 0300 or e-mail [school.stats@scotland.gsi.gov.uk](mailto:school.stats@scotland.gsi.gov.uk)
10. Media enquiries about the information in this notice should be addressed to:  
Marion MacKay: 0131 244 3070

Statistics Publication Notice

17 February 2003 (revised September 2, 2004. Please see Background Note 7 above.)

**Table 1: Exclusions by type of exclusion, 1998/99 to 2002/03**

	1998/99	1999/00	2000/01	2001/02	2002/03
Total all exclusions	<i>n/a</i>	38,769	38,656	37,442	36,496
Temporary	36,856	38,409	38,334	37,110	36,204
Total removed from register	<i>n/a</i>	360	322	332	292
<i>Removed from register (with a break in school attendance)</i>	<i>n/a</i>	190	136	175	128
<i>Removed from register (without a break in school attendance)</i>	<i>n/a</i>	170	186	157	164

**Exclusions by sector, stage and gender 2002/03:****Table 2a: Primary schools**

	Total	P1	P2	P3	P4	P5	P6	P7
Total	4,131	95	173	238	505	741	999	1,380
<i>Percentage</i>	<i>100</i>	<i>2</i>	<i>4</i>	<i>6</i>	<i>12</i>	<i>18</i>	<i>24</i>	<i>33</i>
Male	3,775	85	159	229	472	695	902	1,233
Female	356	10	14	9	33	46	97	147

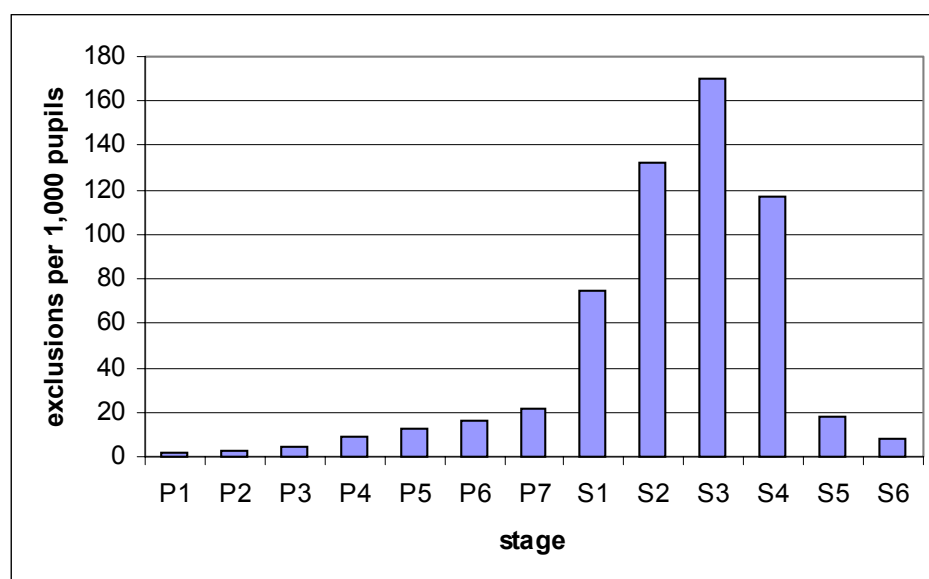
**Table 2b: Secondary schools**

	Total	S1	S2	S3	S4	S5	S6
Total	31,055	4,599	7,813	10,449	7,147	835	212
<i>Percentage</i>	<i>100</i>	<i>15</i>	<i>25</i>	<i>34</i>	<i>23</i>	<i>3</i>	<i>1</i>
Male	24,450	3,878	6,068	8,038	5,626	674	166
Female	6,605	721	1,745	2,411	1,521	161	46

**Table 2c: Special schools**

	Total
Total	1,310
Male	1,184
Female	126

**Chart 1: Exclusions from primary and secondary schools per 1,000 pupils, by stage, 2002/03**



**Exclusions by stage from 1999/2000 to 2002/03**

**Table 3a: Primary schools**

	Total	P1	P2	P3	P4	P5	P6	P7
1999/00	4,495	86	141	340	471	833	1,070	1,554
2000/01	4,507	78	128	260	491	770	1,267	1,513
2001/02	4,478	112	184	327	575	835	1,053	1,392
2002/03	4,131	95	173	238	505	741	999	1,380

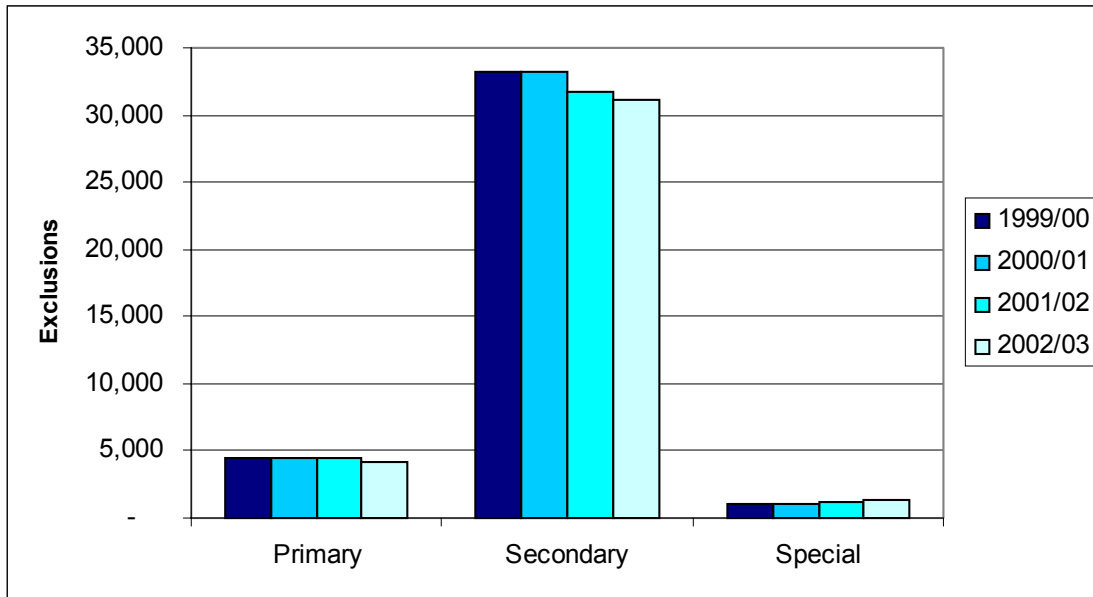
**Table 3b: Secondary Schools**

	Total	S1	S2	S3	S4	S5	S6
1999/00	33,197	5,059	8,591	10,744	7,652	985	166
2000/01	33,145	4,957	8,864	10,591	7,704	852	177
2001/02	31,767	4,481	8,224	10,651	7,335	922	154
2002/03	31,055	4,599	7,813	10,449	7,147	835	212

**Table 3c: Special Schools**

	Total
1999/00	1,077
2000/01	1,004
2001/02	1,197
2002/03	1,310

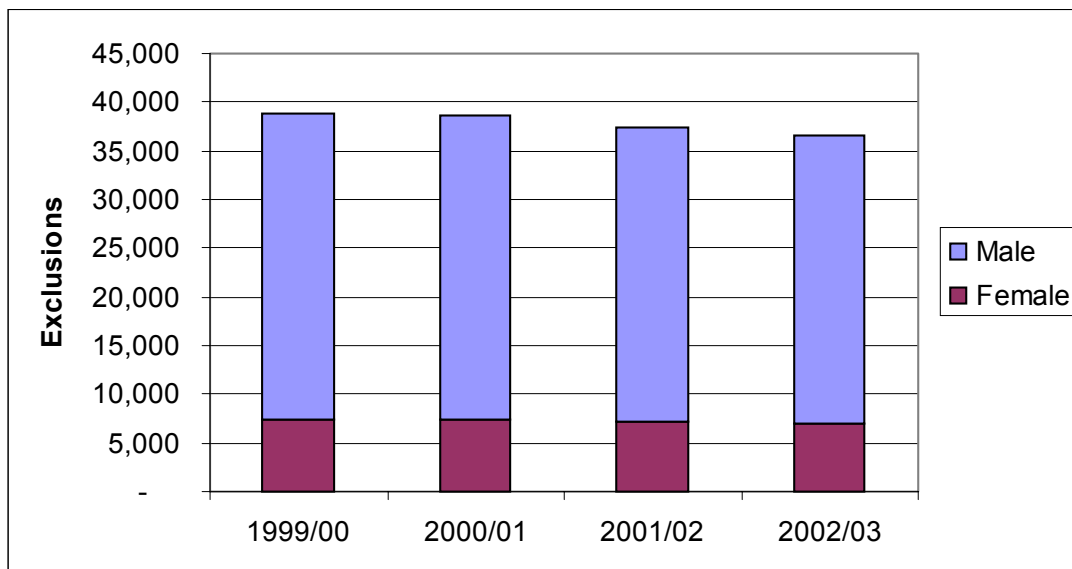
**Chart 2: Exclusions by school sector, 1999/2000 to 2002/03**



**Table 4: Exclusions by sector and gender, 1999/2000 to 2002/03**

	Primary		Secondary		Special	
	Female	Male	Female	Male	Female	Male
1999/00	378	4,117	6,878	26,319	143	934
2000/01	335	4,172	6,972	26,173	108	896
2001/02	341	4,137	6,771	24,996	93	1,104
2002/03	356	3,775	6,605	24,450	126	1,184

**Chart 3: Exclusions by gender and year**



**Table 5: Number of half days lost due to removal from the register, 2002/03**

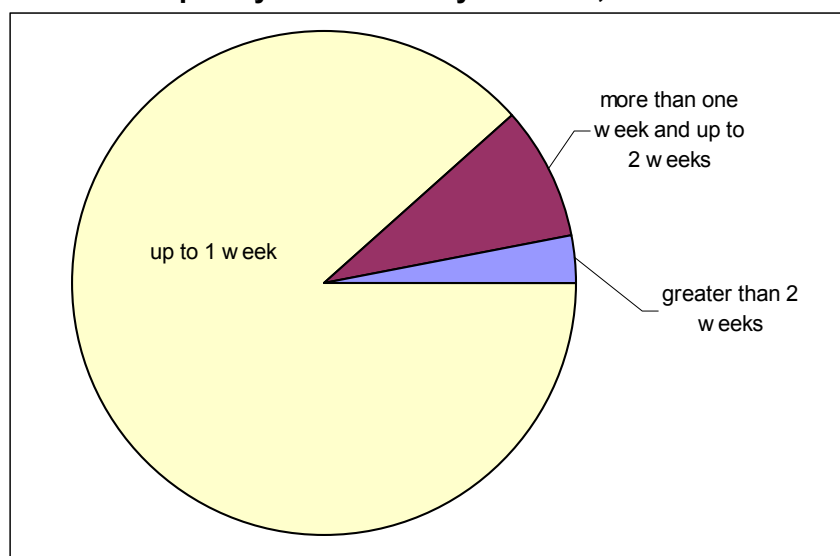
	Half days lost
Total	12,258
With no alternative provision of education	1,520
With alternative provision of education	10,738

There were also 270,450 half days non-attendance at school due to temporary exclusions in publicly funded schools in 2002/03 (source: Attendance & Absence Statistics, 2002/03)

**Table 6: Temporary exclusions, by duration, 2002/03**

Duration (half-days)	Number	<i>Percentage (where known)</i>
Total	36,204	
1	255	1
2	4,598	13
3	1,003	3
4	7,665	21
5	1,077	3
6	9,817	27
7	745	2
8	2,322	6
9	499	1
10	3,993	11
11-20	3,030	8
21-30	743	2
>30	412	1
Duration not known	45	

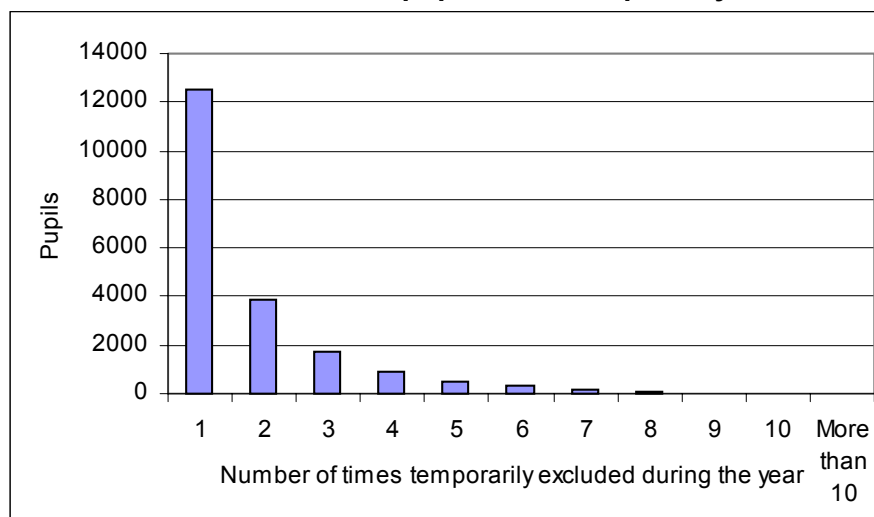
**Chart 4: Temporary exclusions by duration, 2002/03**



**Table 7: Number of times that pupils were temporarily excluded, 2002/03**

Number of temporary exclusions per pupil	Number of pupils	Percentage (where known)
Total	20,180	
1	12,505	62
2	3,850	19
3	1,770	9
4	926	5
5	493	2
6	295	1
7	172	1
8	75	-
9	41	-
10	25	-
More than 10	26	-
Not known	2	

**Chart 5: Number of times that pupils were temporarily excluded, 2002/03**



**Table 8: Exclusions by ethnic background of pupils, 2002/03**

Ethnic Background	All exclusions	Temporary Exclusions	Removals from register	Total pupil numbers <sup>1</sup>	Average rate per 1,000 pupils <sup>2</sup>
Total	36,496	36,204	292	738,031	50
White - UK	33,687	33,542	145	660,866	51
White - Other	258	258	-	9,249	40
Mixed	66	64	2	3,742	10
Asian - Indian	29	29	-	2,385	15
Asian - Pakistani	329	329	-	8,070	41
Asian - Bangladeshi	7	7	-	414	24
Asian - Chinese	11	11	-	2,021	6
Asian - other	11	11	-	955	26
Black – Caribbean <sup>3</sup>	7	7	-	97	74
Black – African <sup>3</sup>	34	34	-	959	28
Black – Other <sup>3</sup>	49	49	-	430	92
Occupational traveller <sup>3</sup>	-	-	-	72	14
Gypsy traveller <sup>3</sup>	4	4	-	242	10
Other traveller <sup>3</sup>	-	-	-	48	-
Other	123	123	-	2,508	37
Not known/not disclosed	1,881	1,736	145	45,950	45

1. Pupil numbers in this table are calculated on a slightly different basis than elsewhere in this publication.

2. The average rate per 1000 pupils is based on two years of exclusion data (2001/02 and 2002/03) and pupil numbers as at September 2002.

3. Pupil numbers are for primary and secondary only in these categories. There were also 18 pupils in special schools from the Black-Caribbean, Black-African and Black-Other categories, and 5 pupils from the Gypsies & Travellers categories which cannot be split for disclosure reasons. The average rate per 1000 pupils includes the special school pupils.

**Table 9: Exclusions amongst particular groups of pupils, 2002/03**

	Number of exclusions	Number of temporary exclusions	Number of removals from register, with or without break in school attendance	Rate per 1,000 pupils in each category
All pupils	36,496	36,204	292	50
Pupils entitled to Free School Meals <sup>1</sup>	16,438	16,289	149	120
Pupils with a Record of Needs <sup>2</sup>	1,636	1,623	13	109
Pupils looked after by the local authority <sup>3</sup>	1,819	1,804	15	227

Sources for pupil numbers used to calculate rate per 1,000 pupils:

<sup>1</sup> School Meals Survey, January 2003

<sup>2</sup> Pupils with Record of Needs, September 2002 (revised figures).

<sup>3</sup> Children's Social Work Statistics, March 2003 (includes children aged 5-15)

**Table 10: Exclusions by type and reason for exclusion, 2002/03**

	Number*	<i>Percentage for known circumstances</i>	Number of temporary exclusions	Number of removals from register, with or without a break in attendance
Total	41,401		40,939	462
General or persistent disobedience	9,677	23	9,617	60
Verbal abuse of members of staff	7,467	18	7,416	51
Physical abuse of fellow pupils	5,337	13	5,301	36
Aggressive or threatening behaviour	4,205	10	4,143	62
Insolent or offensive behaviour	3,450	8	3,427	23
Fighting	2,966	7	2,954	12
Theft / vandalism	1,646	4	1,646	-
Physical abuse of members of staff	1,506	4	1,478	28
Verbal abuse of fellow pupils	917	2	899	18
Drug related incident	542	1	537	5
Racist incident	132	-	132	-
Lack of parental co-operation	56	-	56	-
Other	3,303	8	3,275	28
Not known	197		58	139

\* An exclusion with more than one circumstance given is counted under each relevant category

**Table 11: Exclusions by reason for exclusion 1998/99 to 2002/03<sup>1</sup>**

	1998/99 <sup>2</sup>	1999/00	2000/01	2001/02	2002/03
Total	35,791	42,340	42,656	44,192	41,401
General or persistent disobedience	9,245	10,058	10,116	10,092	9,677
Verbal abuse of members of staff	5,485	6,794	7,090	7,135	7,467
Physical abuse of fellow pupils	4,529	5,466	5,648	5,514	5,337
Aggressive or threatening behaviour	3,238	4,291	4,130	4,294	4,205
Insolent or offensive behaviour	3,588	3,733	3,734	3,602	3,450
Fighting	3,232	3,768	3,475	3,076	2,966
Theft / vandalism (2002/03 only)	n/a	n/a	n/a	n/a	1,646
Physical abuse of members of staff	886	1,146	1,309	1,452	1,506
Verbal abuse of fellow pupils	868	1,052	1,073	906	917
Drug related incident	494	449	443	568	542
Racist incident	113	90	121	118	132
Lack of parental co-operation	79	82	78	81	56
Other	4,034	5,227	5,327	5,047	3,303
Not known	n/a	184	112	2,307	197

1 An exclusion with more than one circumstance given is counted under each relevant category

2 Information on reason for exclusion was not known for 2,226 of the 36,856 temporary exclusions in 1998/99. Data for 1998/99 also includes the 201 removals from the register for which information was available. This figure has been otherwise excluded from this publication as it is believed to be an undercount of the total.

**Table 12: Appeals against exclusions**

	all exclusions	temporary exclusions	removals from register
1998/99	28	n/a	n/a
1999/00	135	129	6
2000/01	76	62	14
2001/02	144	131	13
2002/03	91	77	14

**Table 13: Exclusions by type of exclusion and local authority, 2002/03**

Local authority	Total exclusions	<i>Exclusions per 1,000 pupils</i>	Number of temporary exclusions	Removed from register (with a break in attendance)	Removed from register (without a break in attendance)
Scotland	36,496	50	36,204	128	164
Aberdeen City	932	37	907	25	-
Aberdeenshire	803	22	790	10	3
Angus	725	45	725	-	-
Argyll & Bute	691	53	691	-	-
Clackmannanshire	302	41	302	-	-
Dumfries & Galloway	654	30	654	-	-
Dundee City	1,805	91	1,805	-	-
East Ayrshire	1,124	60	1,124	-	-
East Dunbartonshire	754	40	754	-	-
East Lothian	459	34	459	-	-
East Renfrewshire	220	13	220	-	-
Edinburgh, City of	1,879	39	1,789	90	-
Eilean Siar	28	7	27	-	1
Falkirk	1,231	58	1,231	-	-
Fife	3,234	62	3,234	-	-
Glasgow City	6,471	87	6,332	-	139
Highland	738	22	738	-	-
Inverclyde	840	66	840	-	-
Midlothian	560	44	560	-	-
Moray	292	21	289	3	-
North Ayrshire	1,059	50	1,059	-	-
North Lanarkshire	3,126	60	3,112	-	14
Orkney Islands	29	9	29	-	-
Perth & Kinross	638	35	638	-	-
Renfrewshire	2,095	78	2,095	-	-
Scottish Borders	265	17	265	-	-
Shetland Islands	25	7	25	-	-
South Ayrshire	744	46	744	-	-
South Lanarkshire	2,163	47	2,163	-	-
Stirling	225	18	225	-	-
West Dunbartonshire	1,067	72	1,065	-	2
West Lothian	1,318	51	1,313	-	5

Note: Local authorities have different procedures for use of temporary exclusions and removal from the register with and without a break in attendance.

**Table 14: Exclusions by school sector and local authority, 2002/03**

	Primary		Secondary		Special	
	Number	<i>Rate per 1,000 pupils</i>	Number	<i>Rate per 1,000 pupils</i>	Number	<i>Rate per 1,000 pupils</i>
Scotland	4,131	10	31,055	98	1,310	173
Aberdeen City	189	13	689	65	54	187
Aberdeenshire	66	3	715	46	22	82
Angus	104	11	621	89	-	-
Argyll & Bute	71	10	620	110	-	-
Clackmannanshire	68	16	234	79	-	-
Dumfries & Galloway	86	7	543	56	25	532
Dundee City	207	19	1,596	184	2	13
East Ayrshire	185	18	924	114	15	78
East Dunbartonshire	28	3	724	82	2	12
East Lothian	39	5	420	77	-	-
East Renfrewshire	14	2	206	27	-	-
Edinburgh, City of	327	12	1,402	70	150	195
Eilean Siar	2	1	26	13	-	-
Falkirk	80	7	990	114	161	605
Fife	327	11	2,821	123	86	534
Glasgow City	589	14	5,504	188	378	172
Highland	60	3	677	46	1	6
Inverclyde	63	9	767	135	10	63
Midlothian	112	16	406	72	42	316
Moray	62	8	228	39	2	-
North Ayrshire	103	9	948	103	8	47
North Lanarkshire	456	16	2,518	112	152	189
Orkney Islands	4	2	25	17	-	-
Perth & Kinross	148	14	476	62	14	237
Renfrewshire	200	14	1,807	152	88	272
Scottish Borders	58	7	207	30	-	-
Shetland Islands	3	1	21	13	1	-
South Ayrshire	49	6	695	93	-	-
South Lanarkshire	152	6	1,971	100	40	66
Stirling	26	4	199	34	-	-
West Dunbartonshire	104	13	936	142	27	216
West Lothian	149	10	1,139	108	30	137

**Table 15: Temporary exclusions and number of different pupils temporarily excluded by local authority, 2002/03**

Local authority	Temporary exclusions		Different pupils temporarily excluded	
	Number	<i>Per 1,000 pupils</i>	Number	<i>Per 1,000 pupils</i>
Scotland	36,204	49	20,180	27
Aberdeen City	907	36	563	23
Aberdeenshire	790	22	500	14
Angus	725	45	391	24
Argyll & Bute	691	53	388	30
Clackmannanshire	302	41	185	25
Dumfries & Galloway	654	30	415	19
Dundee City	1,805	91	917	46
East Ayrshire	1,124	60	609	33
East Dunbartonshire	754	40	436	23
East Lothian	459	34	281	21
East Renfrewshire	220	13	162	10
Edinburgh, City of	1,789	37	1,195	25
Eilean Siar	27	7	22	5
Falkirk	1,231	58	662	31
Fife	3,234	62	1,742	33
Glasgow City	6,332	85	3,320	45
Highland	738	22	485	15
Inverclyde	840	66	406	32
Midlothian	560	44	378	30
Moray	289	21	186	14
North Ayrshire	1,059	50	563	26
North Lanarkshire	3,112	60	1,663	32
Orkney Islands	29	9	24	8
Perth & Kinross	638	35	375	20
Renfrewshire	2,095	78	1,078	40
Scottish Borders	265	17	173	11
Shetland Islands	25	7	21	6
South Ayrshire	744	46	401	25
South Lanarkshire	2,163	47	1,225	27
Stirling	225	18	157	12
West Dunbartonshire	1,065	72	532	36
West Lothian	1,315	51	725	28

**Table 16: Temporary exclusions by local authority, 1998/99 to 2002/03**

	1998/99	1999/00	2000/01	2001/02	2002/03
Scotland	36,856	38,409	38,334	37,110	36,204
Aberdeen City	805	842	894	953	907
Aberdeenshire	414	457	575	684	790
Angus	472	515	545	649	725
Argyll & Bute	603	573	607	616	691
Clackmannanshire	349	368	340	308	302
Dumfries & Galloway	556	558	563	571	654
Dundee City	2,082	1,785	1,716	1,933	1,805
East Ayrshire	1,064	1,178	1,321	995	1,124
East Dunbartonshire	707	586	701	803	754
East Lothian	451	525	448	447	459
East Renfrewshire	265	299	261	192	220
Edinburgh, City of	1,650	1,685	1,730	1,688	1,789
Eilean Siar	10	12	17	22	27
Falkirk	984	964	884	1,098	1,231
Fife	2,495	3,143	3,193	3,028	3,234
Glasgow City	7,936	8,470	7,336	6,850	6,332
Highland	524	510	717	759	738
Inverclyde	904	1,005	1,050	930	840
Midlothian	402	368	503	525	560
Moray	147	209	190	197	289
North Ayrshire	1,091	1,246	1,092	1,052	1,059
North Lanarkshire	3,198	3,459	3,584	3,528	3,112
Orkney Islands	21	8	22	15	29
Perth & Kinross	545	572	648	608	638
Renfrewshire	2,700	2,641	2,821	2,426	2,095
Scottish Borders	245	239	266	268	265
Shetland Islands	10	7	3	7	25
South Ayrshire	838	930	785	811	744
South Lanarkshire	2,775	2,369	2,417	2,288	2,163
Stirling	156	136	155	175	225
West Dunbartonshire	1,463	1,617	1,785	1,526	1,065
West Lothian	994	1,133	1,165	1,158	1,313

**Table 17: Removals from the register by local authority, 1999/2000 to 2002/03**

	1999/00	2000/01	2001/02	2002/03
Scotland	360	322	332	292
Aberdeen City	34	43	35	25
Aberdeenshire	6	17	15	13
Angus	-	-	-	-
Argyll & Bute	-	-	-	-
Clackmannanshire	-	-	-	-
Dumfries & Galloway	4	-	-	-
Dundee City	-	-	-	-
East Ayrshire	1	2	-	-
East Dunbartonshire	-	-	-	-
East Lothian	2	-	-	-
East Renfrewshire	11	9	15	-
Edinburgh, City of	106	68	117	90
Eilean Siar	-	1	-	1
Falkirk	-	-	-	-
Fife	-	-	-	-
Glasgow City	112	106	103	139
Highland	10	3	-	-
Inverclyde	1	1	-	-
Midlothian	6	8	9	-
Moray	12	6	5	3
North Ayrshire	2	-	-	-
North Lanarkshire	6	25	7	14
Orkney Islands	-	-	-	-
Perth & Kinross	-	-	-	-
Renfrewshire	13	8	2	-
Scottish Borders	2	-	2	-
Shetland Islands	-	-	-	-
South Ayrshire	5	1	-	-
South Lanarkshire	3	3	-	-
Stirling	2	-	1	-
West Dunbartonshire	13	17	19	2
West Lothian	9	4	2	5

Note: Local authorities have different procedures for use of temporary exclusions and removal from the register with and without a break in attendance.

**Table 18: Total exclusions by local authority, 1999/2000 to 2002/03**

	1999/00	2000/01	2001/02	2002/03
Scotland	38,769	38,656	37,442	36,496
Aberdeen City	876	937	988	932
Aberdeenshire	463	592	699	803
Angus	515	545	649	725
Argyll & Bute	573	607	616	691
Clackmannanshire	368	340	308	302
Dumfries & Galloway	562	563	571	654
Dundee City	1,785	1,716	1,933	1,805
East Ayrshire	1,179	1,323	995	1,124
East Dunbartonshire	586	701	803	754
East Lothian	527	448	447	459
East Renfrewshire	310	270	207	220
Edinburgh, City of	1,791	1,798	1,805	1,879
Eilean Siar	12	18	22	28
Falkirk	964	884	1,098	1,231
Fife	3,143	3,193	3,028	3,234
Glasgow City	8,582	7,442	6,953	6,471
Highland	520	720	759	738
Inverclyde	1,006	1,051	930	840
Midlothian	374	511	534	560
Moray	221	196	202	292
North Ayrshire	1,248	1,092	1,052	1,059
North Lanarkshire	3,465	3,609	3,535	3,126
Orkney Islands	8	22	15	29
Perth & Kinross	572	648	608	638
Renfrewshire	2,654	2,829	2,428	2,095
Scottish Borders	241	266	270	265
Shetland Islands	7	3	7	25
South Ayrshire	935	786	811	744
South Lanarkshire	2,372	2,420	2,288	2,163
Stirling	138	155	176	225
West Dunbartonshire	1,630	1,802	1,545	1,067
West Lothian	1,142	1,169	1,160	1,318