

Statistics Publication Notice

Lifelong Learning Series

A National Statistics Publication For Scotland

HIGHER EDUCATION STUDENT SUPPORT IN SCOTLAND 2007-08



25 November 2008

Scotland's Chief Statistician today published statistics on **Higher Education Student Support In Scotland 2007-08**. These figures provide information on support provided or assessed by the Student Awards Agency for Scotland (SAAS) to higher education students in Scotland and elsewhere in academic years 2002-2003 to 2007-2008. The statistics in this release supersede those published by Scotland's Chief Statistician on 13 November 2007.

Key Findings

- The level of all types of support administered by SAAS increased by 4.0 per cent in academic year 2007-2008 to £458.6 million. The number of students supported increased by 0.4 per cent to 122,505.
- In 2007-2008 the amount paid out as non-repayable awards increased by 1.9 per cent, fee payments increased by 11.4 per cent and the value of loan authorisations decreased by 0.8 per cent compared with the previous academic year. The fall in loan authorisations follows the trend seen since 2002-2003.
- Award payments accounted for 22.9 per cent of mainstream support administered by SAAS in 2007-2008, fee payments accounted for 37.0 per cent and loan authorisations for 40.2 per cent.
- In 2007-2008, 74.0 per cent of students who received SAAS support were studying for a first degree. This is consistent with previous years.

- The number of EU students receiving support from SAAS has increased by 93.8 per cent to 8,680 between 2002-2003 and 2007-2008. This includes a 17.6 per cent increase in EU student numbers since 2006-2007. EU students receive fee support only. In academic year 2007-2008 92.9 per cent of those supported by SAAS were Scottish domiciles.
- Fee payments totalled £169.5 million in 2007-2008, an increase of 11.4 per cent on the previous year. This is mainly due to the increase in tuition fees introduced for new entrants in 2006-2007 now applying to both new entrants and those in the second year of their course in 2007-2008.
- Fee loan payments for students studying outside Scotland in the rest of the UK have increased by 106.8 per cent to £5.6 million since their introduction for new entrants in 2006-2007. This increase was due to this support being available to both first and second year students in 2007-2008 compared to only those in their first year in 2006-2007.
- Award payments to young students, students with dependents and students with a disability have increased by 36.8 per cent since 2002-2003 to £80.7 million in 2007-2008. This is an increase of 0.4 per cent since 2006-2007
- In 2007-2008 3,625 students were in receipt of Disabled Students Allowance payments totalling £8.1 million. This is an increase of 7.1 per cent in terms of students and 6.7 per cent in terms of amounts paid out since 2006-2007.



Contents

NOTES TO NEWS EDITORS.....	2
Mainstream Student Support Tables and Figures – National Statistics	7
Supplementary Tables – Not National Statistics.....	28

List of Tables

Table 1: Students receiving support and/or assessed for loans¹ by SAAS, 2002-03 to 2007-08.....	7
Table 2: All students receiving support¹ from SAAS by location of study and institution type, 2002-03 to 2007-08	10
Table 3: All students receiving support¹ from SAAS by gender and age, 2002-03 to 2007-08	11
Table 4: All students receiving support¹ from SAAS by level of study and domicile, 2002-03 to 2007-08.....	12
Table 5: Students receiving fee support from SAAS and total amount paid, 2002-03 to 2007-08	14
Table 6: Students assessed by SAAS¹ as entitled to loans and total entitlement, 2002-03 to 2007-08	16
Table 7: Students assessed by SAAS¹ as entitled to loans and actual loan take-up from the Student Loans Company 2002-03 to 2007-08².....	18
Table 8: Students receiving awards from SAAS and total amount paid, 2002-03 to 2007-08	19
Table 9: Students in receipt of Disabled Students' Allowance from SAAS, 2002-03 to 2007-08. Disability type & total amount paid.....	23
Table 10: Parental/spousal residual income details of students receiving support from SAAS, 2007-08	26
Table 11: Students receiving support from SAAS, 2007-08. Institution location, type of institution & level of support.....	27
Table 12: Nursing and midwifery students receiving support through the Scottish Government Health Directorate's Nursing and Midwifery Students' Bursary Scheme (NMSB). NOT NATIONAL STATISTICS.....	28
Table 13: Instances of assistance and amount of support provided through the Higher Education Discretionary Fund and the Higher Education Childcare Fund academic years 2002-03 – 2006-07. NOT NATIONAL STATISTICS.....	29

List of Figures

Figure 1 Students receiving support and/or assessed for loans by SAAS, 2002-03 to 2007-08	8
Figure 2: Total amounts paid or assessed by SAAS through awards, fees and loan (£m), 2002-03 to 2007-08	9
Figure 3: Students assessed by SAAS¹ as entitled to loans, 2002-03 to 2007-08.....	17
Figure 4: Students receiving awards from SAAS, 2002-03 to 2007-08.....	21
Figure 5: Total amounts paid in award payments (£m), 2002-03 to 2007-08..	22
Figure 6: Students in receipt of Disabled Students' Allowance from SAAS, 2002-03 to 2007-08	24
Figure 7: Total Disabled Students' Allowance paid (£m) by SAAS, 2002-03 to 2007-08.....	25

NOTES TO NEWS EDITORS

1. The information presented in this news release is provided by the Student Awards Agency for Scotland (SAAS), and analysed by the Scottish Government.
2. SAAS administers the student support arrangements for Scottish domiciled higher education students studying throughout the UK and EU students studying in Scotland.
3. Most full-time first degree courses and equivalent level qualifications are covered by SAAS student support, as well as the postgraduate teaching qualifications and some sub-degree courses. Certain other postgraduate qualifications are also covered. Information on support provided by SAAS is covered in the main body of this publication, in the section entitled 'Mainstream Student Support'. Pre-registration Nursing and Midwifery students are supported by the Scottish Government's Health Directorate, though SAAS deals with their applications and administers their payments. Top level information on such students is provided in the 'Supplementary Tables' section of this publication. Additional support is also available to students experiencing financial difficulties through the Higher Education Discretionary and Childcare Funds. Some data on these funds is also included in the 'Supplementary Tables' section.
4. Since 2001-02, support for new entrants has consisted of up to 3 elements: tuition fees paid by SAAS on behalf of all eligible students (direct to the institution of study); living cost support through a loan extended by the Student Loans Company; and targeted allowances to certain groups of students (e.g. young students, students with disabilities, students with dependents).
5. Over the period covered in this publication several changes to the student support package available through SAAS occurred. The main changes are outlined below.

Grants & Awards

For undergraduate students, Standard Maintenance Allowance (SMA) only applies to those who entered the system before 1998-99. In 2001-02 new grants targeted towards young students and students with dependants were introduced. Postgraduate students on taught postgraduate diplomas (excluding education) who come under the PSAS scheme (Postgraduate Students Allowances Scheme) are eligible for income assessed SMA.

The Dependants Grant for children and the School Meals Grant were abolished in 2004-05, following the introduction of the new tax credits system.

The Young Students Bursary (YSB) income thresholds were changed in 2005-06, meaning that more students were eligible for

the full amount of YSB. The maximum amount of YSB available to students was also increased in 2005-06.

Student Outside Scotland Bursary (SOSB) was introduced in 2006-07 for new students studying outside Scotland. This replaced the Young Students Outside Scotland Bursary for such students and extended eligibility to mature students.

Fee Payments

Scottish and EU domiciled students studying in Scotland are eligible to have their tuition fees paid by SAAS.

Students who entered their course between 2001-2002 and 2005-2006 can apply for fee support and can receive £1,225 which is paid directly to the institution. Those who entered in 2006-2007 or later, or those returning after a break in study of a year or more, can receive £1,735 in fee support for a first degree or post graduate teaching qualification. The fee for medical students is £2,760 and for an HNC/HND level course it is £1,225. Postgraduate (excluding teaching qualifications) course fees are £3,235.

Fee loans were introduced in 2006-07 for new Scottish students who were studying outside of Scotland in the rest of the UK. In 2007-08 both new students and those who began their course in 2006-07 could apply for fee loans. In such cases fees are paid direct to the institution on the students' behalf and are repaid by the student in the same way as maintenance loans.

Loan Assessments

Prior to 1999-00 students applied for a loan through their institution and not SAAS. From 1999-00 onwards new entrants have applied to SAAS for a loan. SAAS calculates a student's loan entitlement and the Student Loans Company (SLC) extends the loan. The data on loans included in this publication relate to the level of loans assessed by SAAS. This might not match the final loan that a student draws from SLC due to a number of factors such as non-completion of course.

In order to compare the numbers being assessed by SAAS and the final uptake figures of loan from the Student Loans Company (SLC), figures from the SLC are included in this publication.

Details on loans issued under previous arrangements in the period before 1999-00 are not included in this publication (including mortgage-style repayment loans).

In academic year 2007-2008 students received their loan instalments on a monthly basis for the first time. Prior to this, payments were made at the start of each term.

6. The level of income assessed support payable to students is dependent on the unearned income of the student, as well as his/her parents' (or spouse's/civil partner's) residual income. The residual income of the parent(s) or spouse/civil partner is calculated as the total income from all sources (including earned income from employment, income from property/pensions/benefits, interest from savings, etc.) less allowable deductions (such as superannuation contributions, retirement annuity premiums, life assurance premiums (up to 2001-02), interest paid on loans (up to 2001-02), allowances for dependants, etc.). The residual income is then used as the basis for income assessment for awards, fee payments and loans as appropriate.

7. Each year student support levels and income thresholds are updated by the forecasted Retail Price Index excluding mortgage payments (RPIX).

8. In considering the statistics presented in this paper it may also be useful to be aware of the sources of finance which fund different types of student support. Fees and Awards are paid directly from the Scottish Government's Barnett allocation (also known as the Departmental Expenditure Limit or DEL). Funding for loans is provided by HM Treasury from what is known as the Annual Managed Expenditure (AME) budget. However, for every £1 of loan paid by HM Treasury from its AME budget, it costs the Scottish Government 31p from its DEL budget to cover the cost of subsidising interest on the loans and the cost of loans which may eventually be written off.

9. The following classification has been used in this publication to define the level of study of students receiving support. This classification is consistent with other Scottish Government National Statistics publications on higher education.

- **Postgraduate:** Students attending courses where a first degree qualification is an entry requirement. This includes students doing research or on a course leading to a higher degree, postgraduate diploma or equivalent (including post graduate diploma in education - PGDE - students).
- **First Degree:** Students on courses leading to a first degree or equivalent.
- **Sub-Degree:** Students on courses classified as higher education but not classified as postgraduate or first degree, such as HNCs and HNDs.

A small number of the qualification types supported by SAAS do not obviously fall into postgraduate/first degree/other undergraduate levels. For the purposes of this publication these have been coded at first degree level with the exception of those on Adult Education courses at residential colleges who have been included in 'other undergraduate courses'. This only affects around 30 students in each academic year.

Although certain students are classed as undertaking postgraduate levels study, they are funded through the undergraduate support stream. These mainly include Post Graduate Diploma in Education (PGDE) students. In Table 4 (which shows supported students by domicile and level of study) such students are counted under the 'postgraduate' category.

10. This is a National Statistics publication. National Statistics are produced to high professional standards set out in the National Statistics Code of Practice. They undergo regular quality assurance reviews to ensure that they meet customer needs. They are produced free from any political interference.

11. This publication contains some corrections of data published in the previous year's Statistical release. These corrections account for errors which have been picked up during quality assurance. For academic years 2002-2003 to 2006-2007 corrected figures are shown in the relevant tables and indication of where they occur is given either in the footnotes or in the text accompanying the table. As it is customary to include time series data for six academic years in these publications, data for academic year 2001-2002 was included in last year's publication but not this one. Corrected data for 2001-2002 and previous years can be found at: <http://www.scotland.gov.uk/Topics/Statistics/Browse/Lifelong-learning/SAAS>

12. This news release, together with associated tables listed above, is published on the Scottish Government website at the following address:

<http://www.scotland.gov.uk/Topics/Statistics/Browse/Lifelong-learning/Publications>

13. Tables showing the figures contained in the publication back to 1997-98 will also be available on the Scottish Government website at the following address:

<http://www.scotland.gov.uk/Topics/Statistics/Browse/Lifelong-learning/datasets>

14. The Student Loans Company recently published data on student loans and outstanding debt and the publication can be accessed via the following address:

<http://www.scotland.gov.uk/Topics/Statistics/Browse/Lifelong-learning/PubStudentLoansHE>

15. Further information on all aspects of student support provided by the Student Awards Agency for Scotland, including types of support and eligibility, can be found on their website at the following address:

<https://www.saas.gov.uk/>

For further information (**non-media**), enquiries and comments on this news release, please contact:

Debbie Amabile

ASU LLL Lifelong Learning Statistics
Education Analytical Services
Scottish Government
3rd Floor, Meridian Court
5 Cadogan Street
Glasgow
G2 6AT

Tel. (0141) 242 0271

Fax. (0141) 242 5455

E-mail fhestatistics@scotland.gsi.gov.uk

For **media enquiries** please contact:

Ashley Duff

Communications Education and Lifelong Learning
Scottish Government
St Andrew's House
Regent Road
Edinburgh
EH1 3DG

Tel. (0131) 244 3070

E-mail:

CommunicationsEducationAndLifelongLearning@scotland.gsi.gov.uk

Mainstream Student Support Tables and Figures – National Statistics

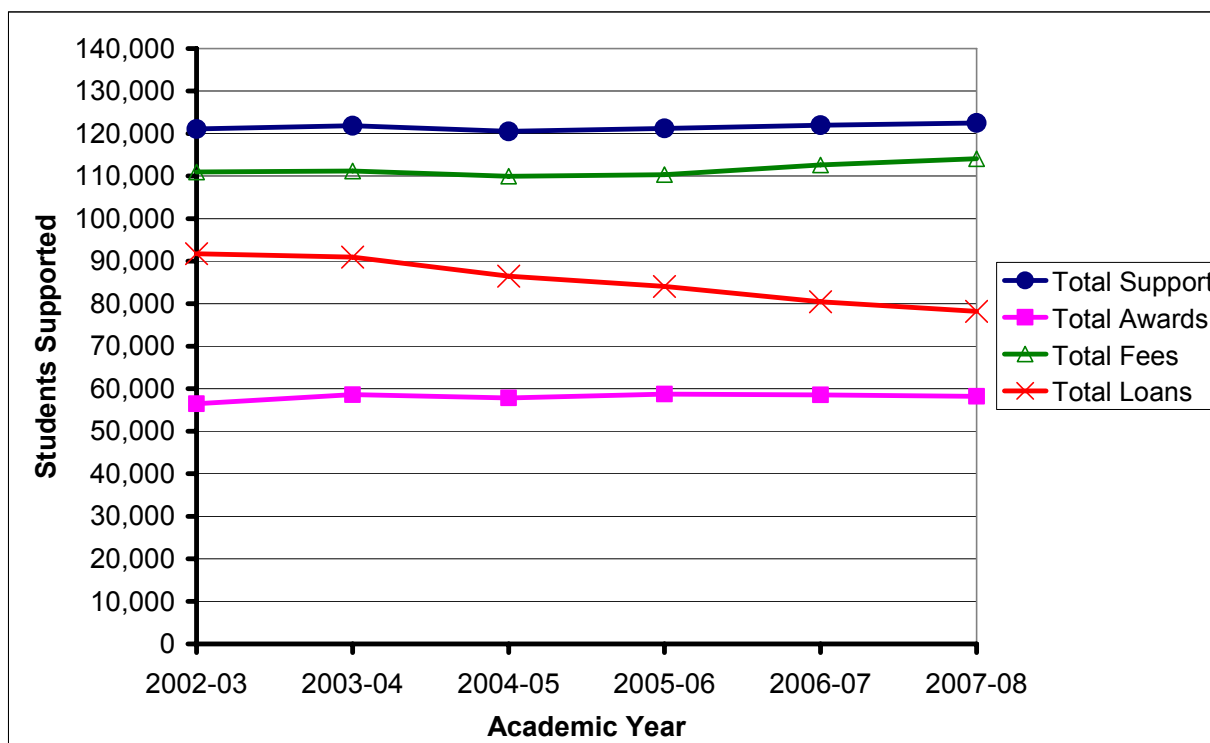
Table 1: Students receiving support and/or assessed for loans¹ by SAAS, 2002-03 to 2007-08

	2002-03		2003-04		2004-05	
	Students Receiving Support ¹	Total Support/Assessed Loans (£1000s) ²	Students Receiving Support ¹	Total Support/Assessed Loans (£1000s) ²	Students Receiving Support ¹	Total Support/Assessed Loans (£1000s) ²
Total Support^{3,4}	121,080	438,110	121,855	441,188	120,525	417,511
Total Awards	56,485	84,491	58,610	90,396	57,825	80,086
Total Fees ⁵	110,960	124,892	111,180	127,620	109,955	129,013
Total Loans ⁶	91,755	228,728	90,950	223,172	86,440	208,412
	2005-06		2006-07		2007-08	
	Students Receiving Support ¹	Total Support/Assessed Loans (£1000s) ²	Students Receiving Support ¹	Total Support/Assessed Loans (£1000s) ²	Students Receiving Support ¹	Total Support/Assessed Loans (£1000s) ²
Total Support^{3,4}	121,235	423,648	121,990	440,829	122,505	458,613
Total Awards	58,750	99,825	58,565	102,872	58,230	104,773
Total Fees ⁵	110,340	132,117	112,610	152,145	114,100	169,528
Total Loans ⁶	84,065	191,707	80,450	185,813	78,175	184,312

Source: SAAS management information.

1. Student numbers in this table have been rounded up or down to the nearest 5 (e.g. 1, 2 round to 0; 3, 4 round to 5).
2. Cash totals are rounded to the nearest thousand.
3. Each student is counted once in the 'total support' row. For this reason the total number of students is lower than the sum of the number of students receiving support through each element.
4. Cash totals may not equal the sum of their constituent parts due to rounding.
5. Fee loans were introduced in 2006/07 for students studying outside Scotland in the rest of the UK and are included in 2006/07 and 2007/08 fees totals.
6. Student loan entitlement is calculated by SAAS but the Student Loans Company extends the loan. These figures relate to entitlement rather than uptake which may be lower.

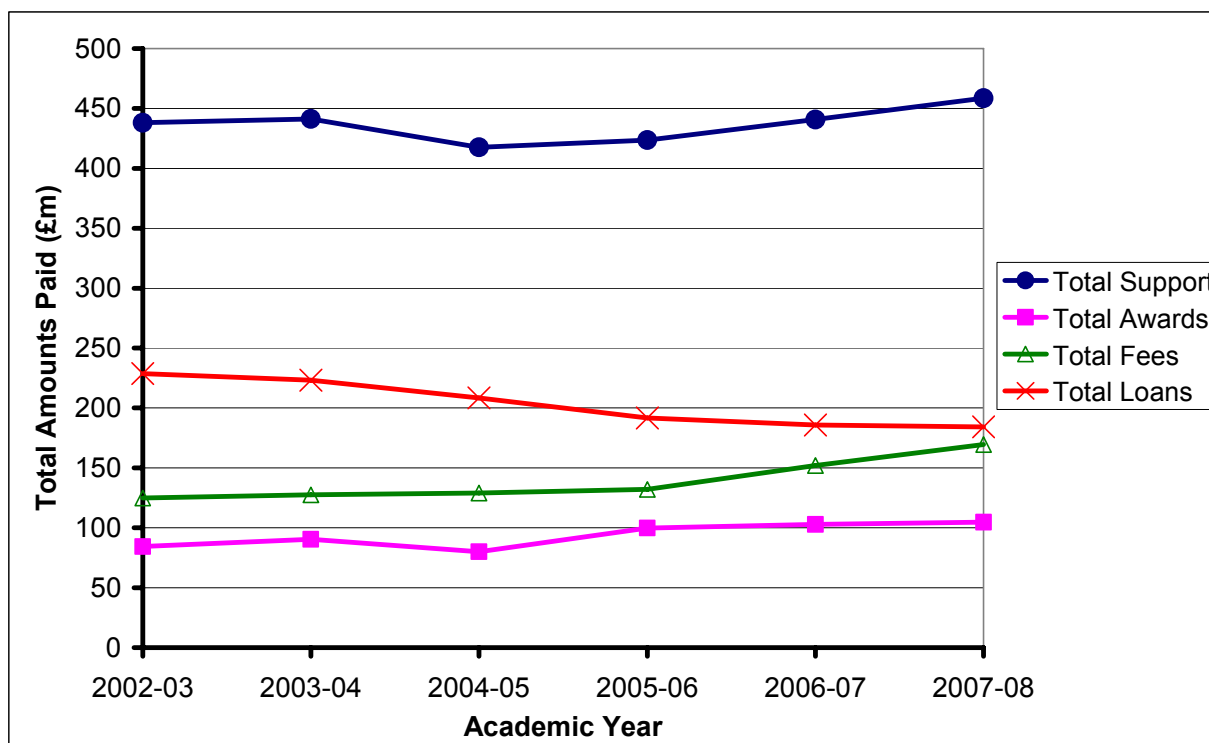
Figure 1 Students receiving support and/or assessed for loans by SAAS, 2002-03 to 2007-08



Source: SAAS management information.
Data for this figure is taken from Table 1.

1. Figure 1 and Table 1 show that the total number of students supported since 2002-2003 has increased by 1.2% to 122,505 in 2007-2008. The number of students receiving awards has increased by 3.1% since 2002-2003 to 58,230 in 2007-2008. However numbers receiving award payments have been decreasing since 2005-2006 with 0.9% fewer students receiving awards in 2007-2008. The number of students receiving fee support remained reasonably constant, at around 111,000, up until academic year 2006-2007, which saw an increase of around 2.0% in the numbers receiving fees. 2007-2008 saw another increase, by 1.3% to 114,100. These increases can be attributed to the introduction of fee loan support for study outside Scotland in the rest of the UK for new entrants in academic year 2006-2007 and increasing EU student numbers. The number of students assessed for maintenance loans has decreased in each academic year from a high of 91,755 in 2002-03 to 78,175 in 2007-08; this corresponds to a decrease of 14.8%. Further details on these elements of support can be found in Table 5 (fees), Tables 6 and 7 (loans) and Table 8 (awards).

Figure 2: Total amounts paid or assessed by SAAS through awards, fees and loan (£m), 2002-03 to 2007-08



Source: SAAS management information.
Data for this chart taken from Table 1.

2. Total student support paid by SAAS has increased by 4.7% since 2002-2003 to £458.6 million in 2007-2008. Figure 2 shows that after a fall in 2004-2005 (relating to the abolition of Dependants Grant for dependent children¹), the amount of support has risen in each academic year and is now 9.8% higher. This is attributed to the increase in support paid from 2005-2006 through Young Students Bursaries, the introduction of fee loans for study outside Scotland in 2006-2007 and the higher public institution fee rates introduced 2006-2007. Award payments have risen by 30.8% since 2004-2005 to £104.8 million in 2007-2008 and fee payments have increased by 31.4% to £169.5 million. The value of loan authorisations has fallen 19.4% since its peak in 2002-2003 to £184.3 million in 2007-2008 (reflecting the decrease in students applying for loans shown in Table 1 and Figure 1).

3. 22.9% of total support in 2007-2008 consisted of award payments, fee payments (tuition fees and tuition fee loans) accounted for 37.0% and the remaining 40.2% consisted of maintenance loan authorisations.

¹ Dependant's Grant is still available (on an income assessed basis) for students with a spouse or civil partner.

Table 2: All students receiving support¹ from SAAS by location of study and institution type, 2002-03 to 2007-08

		Students Supported ^{1,2}					
		2002-03	2003-04	2004-05	2005-06	2006-07	2007-08
Total	Total	121,080	121,855	120,525	121,235	121,990	122,505
	HEI ³	93,695	95,015	95,185	95,860	96,685	97,180
	FEC ⁴	27,140	26,615	25,115	25,115	25,085	25,115
	Other institution ⁵	245	225	225	260	220	210
Scotland	Total	115,245	116,210	115,205	116,185	117,220	117,880
	HEI ³	88,540	90,005	90,455	91,390	92,370	92,995
	FEC ⁴	26,565	26,075	24,615	24,640	24,715	24,760
	Other institution ⁵	135	130	130	155	140	125
Outwith Scotland	Total	5,835	5,645	5,325	5,050	4,770	4,625
	HEI ³	5,155	5,010	4,725	4,470	4,315	4,185
	FEC ⁴	575	540	500	475	370	355
	Other institution ⁵	105	100	95	105	80	85

Source: SAAS management information.

1. 'Students supported' are those receiving fees (or fee loans) and/or awards and/or who have been assessed for maintenance loans.
2. Student numbers have been rounded up or down to the nearest 5 (e.g. 1, 2 round to 0; 3, 4 round to 5)
3. HEI = Higher Education Institution.
4. FEC = Further Education College.
5. 'Other institution' types include NHS colleges, theological colleges, Adult Education colleges and others.

4. Table 2 shows that in academic year 2007-2008 79.3% (97,180) of students supported by SAAS studied at Higher Education Institutions (HEIs) and 20.5% (25,115) studied at FECs (Further Education Colleges). These proportions are similar for institutions located in Scotland, but for students studying outwith Scotland 90.5% (4,185) attend an HEI. The number of SAAS supported students studying at HEIs in 2007-2008 is 3.7% higher than in 2002-2003, whereas numbers at FECs have decreased by 7.5% (reflecting trends in falling higher education entrant numbers at Scotland's colleges²). This corresponds to a percentage point increase of around 2 for the proportion studying at HEIs and a percentage point decrease of around 2 for the proportion studying at FECs. A similar trend is seen for students studying in Scotland, but outwith Scotland student numbers have decreased for both HEIs and FECs since 2002-2003 (by 18.8% and 38.2% respectively). In each academic year around 95-96% of all students supported by SAAS study in Scotland.

5. The figures in Table 2 for academic years 2002-2003 to 2006-2007 are corrections of those included in the previous year's publication 'Student Awards in Scotland 2006-07'. The correction was necessary as some partner colleges of the University of the Highlands and Islands Millennium Institute were incorrectly classified as either 'FECs' or 'Other Institutions'. In addition schools of Dentistry and Dental Hygiene attached to Edinburgh and Glasgow Universities are now classified as HEIs. These changes affect around 50 to 80 students depending on the academic year. Corrected versions of this table for academic years 2001-2002 and earlier can be found at <http://www.scotland.gov.uk/Topics/Statistics/Browse/Lifelong-learning/SAAS>.

²See 'Students in Higher Education at Scottish Institutions 2006-07' table 1 <http://www.scotland.gov.uk/Publications/2008/06/23093807/4>

Table 3: All students receiving support¹ from SAAS by gender and age, 2002-03 to 2007-08

		Students Supported ^{1,2}					
		2002-03	2003-04	2004-05	2005-06	2006-07	2007-08
Total	Total	121,080	121,855	120,525	121,235	121,990	122,505
	17 and under	12,745	12,100	11,560	11,640	11,285	10,995
	18-20	60,250	60,940	59,980	59,885	60,350	60,735
	21-24	27,320	28,115	28,815	29,145	30,130	30,510
	25 and over	20,765	20,695	20,170	20,565	20,220	20,265
Female	Total	65,805	65,575	64,995	65,345	64,710	64,405
	17 and under	7,070	6,525	6,110	6,110	5,855	5,665
	18-20	32,920	33,070	32,535	32,275	31,770	31,845
	21-24	14,045	14,335	14,745	14,955	15,315	15,310
	25 and over	11,765	11,645	11,605	12,005	11,770	11,590
Male	Total	55,280	56,280	55,530	55,890	57,285	58,100
	17 and under	5,675	5,580	5,450	5,530	5,435	5,335
	18-20	27,330	27,870	27,445	27,610	28,580	28,895
	21-24	13,270	13,780	14,070	14,190	14,815	15,195
	25 and over	9,000	9,055	8,565	8,560	8,455	8,675

Source: SAAS management information.

- 'Students supported' are those receiving fees (or fee loans) and/or awards and/or who have been assessed for maintenance loans.
- Student numbers have been rounded up or down to the nearest 5 (e.g. 1, 2 round to 0; 3, 4 round to 5).

6. The proportion of female students supported by SAAS has decreased by almost 2 percentage points from 54.3% in academic year 2002-2003 to 52.6% academic year 2007-2008. Numbers of female students have increased by 2.1% to 64,405 since 2002-2003, whereas numbers of male students have increased by 5.1% to 58,100 in 2007-2008. Across all six academic years those aged 25 and over are most likely and those aged 21-24 are least likely to be female: around 57-58% of those aged 25 and over are female compared with 50-51% of those aged 21-24. The 21-24 age group has seen the largest increase in male student numbers: a 14.5% increase since 2002-2003 to 15,195 students in 2007-2008.

7. 9.0% of all students supported by SAAS in academic year 2007-2008 were aged 17 or under, 49.6% were aged 18-20, 24.9% were aged 21-24 and 16.5% were aged 25 and over. The age distribution is similar in academic years 2002-2003 – 2006-2007. However the number of students aged 17 or under is 13.7% lower in academic year 2007-2008 than in academic year 2002-2003 whereas the number aged 21-24 has increased by 11.7%. The decrease in those aged 17 and under is more pronounced for female students than male students (19.9% for females, 6.0% for males) whereas the reverse is true for the increase in students aged 21-24 (9.0% for females compared to 14.5% for males)

Table 4: All students receiving support¹ from SAAS by level of study and domicile, 2002-03 to 2007-08

	2002-03				2003-04				2004-05			
	Scots		EU		Scots		EU		Scots		EU	
	Total ^{1,2}	Domiciled	Total ^{1,2}	Domiciled	Total ^{1,2}	Domiciled	Total ^{1,2}	Domiciled	Total ^{1,2}	Domiciled	Total ^{1,2}	Domiciled
Total	121,080	116,600	4,480	4,480	121,855	116,880	4,975	4,975	120,525	114,660	5,865	5,865
Postgraduate³	3,940	3,705	235	235	3,845	3,565	280	280	4,290	3,900	390	390
First degree	87,020	82,770	4,250	4,250	88,930	84,235	4,695	4,695	89,025	83,650	5,375	5,375
Other Undergraduate⁴	30,085	30,085	-	-	29,045	29,040	0	0	27,200	27,100	100	100
Unknown	40	40	-	-	35	35	-	-	10	10	-	-
	2005-06				2006-07				2007-08			
	Scots		EU		Scots		EU		Scots		EU	
	Total ^{1,2}	Domiciled	Total ^{1,2}	Domiciled	Total ^{1,2}	Domiciled	Total ^{1,2}	Domiciled	Total ^{1,2}	Domiciled	Total ^{1,2}	Domiciled
Total	121,235	114,850	6,385	6,385	121,990	114,610	7,385	7,385	122,505	113,825	8,680	8,680
Postgraduate³	5,085	4,700	385	385	5,070	4,645	420	420	4,705	4,260	445	445
First degree	88,910	83,045	5,865	5,865	89,725	82,910	6,815	6,815	90,680	82,635	8,045	8,045
Other Undergraduate⁴	27,230	27,095	135	135	27,165	27,015	150	150	27,095	26,900	195	195
Unknown	10	10	-	-	35	35	-	-	30	30	-	-

Source: SAAS management information.

1. 'Students supported' are those receiving fees (or fee loans) and/or awards and/or who have been assessed for maintenance loans.
2. Student numbers have been rounded up or down to the nearest 5 (e.g. 1, 2 round to 0; 3, 4 round to 5). Cells containing a dash indicate 0 students.
3. Postgraduate student numbers include those doing Post Graduate Diploma in Education and Post Graduate Diploma in Community Education courses even though such students are funded in the same way as undergraduates.
4. 'Other undergraduates' include students at Adult Education colleges who are funded under the Adult Education Allowances Scheme.

8. Table 4 shows that the number of EU students has increased in each academic year since 2002-2003. In academic year 2007-2008 SAAS supported 8,680 EU students; this is 93.8% higher than in 2002-2003 and 17.6% higher than in 2006-2007. This increase means that Scots students made up 92.9% of all those supported in 2007-2008 compared to 96.3% in 2002-2003.

9. The majority of students supported are studying at first degree level. In 2007-2008 almost three quarters of those supported (74.0%, 90,680 students) were studying at first degree level, 22.1% (27,095 students) were studying at 'other undergraduate' level and 3.8% (4,705) were studying at postgraduate level. This distribution is reflected for Scottish domiciled students but EU domiciled students are more likely to be first degree students: 92.7% (8,045 out of 8,680) of EU students supported by SAAS

studied first degrees in 2007-2008. Since academic year 2002-2003 there has been a decrease of 10.0% in the number of supported students at 'other undergraduate' level (possibly reflecting published trends in falling sub-degree level entrants in Scotland²). Postgraduate numbers have increased by 19.5% (despite a 7.2% fall between 2006-2007 and 2007-2008) and first degree numbers have increased by 4.2% in the same period.

10. Table 4 contains corrections of the figures for academic years 2002-2003 to 2006-2007 published in 'Student Awards in Scotland 2006-07'. These corrections are a result of changes made to how different qualification types were classified. They mainly affect around 230-320 EU students in each year who have now been re-categorised from 'first degree' to 'postgraduate' though other smaller groups have also been affected. Corrected versions of this table for academic years 2001-2002 and earlier can be found at <http://www.scotland.gov.uk/Topics/Statistics/Browse/Lifelong-learning/SAAS>.

Table 5: Students receiving fee support from SAAS and total amount paid, 2002-03 to 2007-08

	2002-03		2003-04		2004-05	
	Students in Receipt ¹	Total Amount Paid (£1000s) ²	Students in Receipt ¹	Total Amount Paid (£1000s) ²	Students in Receipt ¹	Total Amount Paid (£1000s) ²
Tuition Fee Total	110,960	124,892	111,180	127,620	109,955	129,013
Full fees	108,700	123,209	109,045	126,006	108,230	127,664
Half fees	1,110	598	1,130	622	795	445
Other Fees	1,150	1085	1,010	993	930	904
Fee Loan ³	-	-	-	-	-	-
	2005-06		2006-07		2007-08	
	Students in Receipt ¹	Total Amount Paid (£1000s) ²	Students in Receipt ¹	Total Amount Paid (£1000s) ²	Students in Receipt ¹	Total Amount Paid (£1000s) ²
Tuition Fee Total	110,340	132,117	112,610	152,145	114,100	169,528
Full fees	108,535	130,705	109,575	147,912	109,910	162,265
Half fees	800	456	830	546	725	457
Other Fees	1010	956	1,245	977	1,555	1,203
Fee Loan ³	-	-	960	2,709	1,910	5,602

Source: SAAS management information.

1. Student numbers have been rounded up or down to the nearest 5 (e.g. 1, 2 round to 0, 3, 4 round to 5). Cells containing a dash indicate 0 students.
2. Cash totals have been rounded to the nearest thousand and may not equal the sum of their constituent parts due to this rounding.
3. Fee loans were introduced for eligible students who started their course in academic year 2006-2007 and were studying outside Scotland in the rest of the UK.

- **Full fees** – the normal maximum public fee rate of £1,225 for students continuing from academic year 2005-06 or earlier and for all HNC/HND level students, £1,735 for first degree level students who entered their course in 2006-2007 or later, £2,760 for medical students, and £3,235 for postgraduate students.
- **Half fees** – paid to students on work placements or those on years abroad where they attend their home institution for less than 10 weeks.
- **Other fees** – there are a few private institutions that get more than the public fee rate (usually theology-related).

Also takes account of the income assessed fees i.e. cases where SAAS pay some of the normal public fee rate and the student pays the rest. In addition students who have had a break of study of a year or more and whose college or university is charging a fee rate higher £1,225 can have the difference paid by SAAS so they are not penalised by the new higher rates.

- **Fee Loans** - Eligible students who begin their course of study in 2006-2007 or later, or who are returning after a break in study of a year or more, and are studying outside Scotland, can apply for a non-income assessed fee loan to pay some or all of their fees. The Student Loans Company (SLC) extends the fee loan to the students who repay them in the same way as maintenance loans.

11. Table 5 shows that 96.3% (109,910) of those receiving tuition fee support receive their full fees. The amount spent in tuition fee support has increased by 11.4% from 2006-2007 to £169.5 million in 2007-2008. This increase is due mainly to the fact that the increased fee rates for first degree students and medical students introduced for new entrants in 2006-2007 now apply to students in the first and second years of their courses. Fee loans, which were introduced for new entrants in 2006-2007, have increased by 99.1% (to 1,910) in terms of student numbers and 106.8% in terms of payments (to £5.6 million).

Table 6: Students assessed by SAAS¹ as entitled to loans and total entitlement, 2002-03 to 2007-08

	2002-03		2003-04		2004-05	
	Students Entitled ^{1,2} (£1000s) ³	Total Entitlement (£1000s) ³	Students Entitled ^{1,2} (£1000s) ³	Total Entitlement (£1000s) ³	Students Entitled ^{1,2} (£1000s) ³	Total Entitlement (£1000s) ³
Total Loan⁴	91,755	228,728	90,950	223,172	86,440	208,412
Non Income Assessed Loan	90,300	95,258	89,665	82,170	85,210	70,337
Income Assessed Loan	67,430	127,294	68,070	133,200	64,600	129,442
Additional Income Assessed loan	13,035	6,176	16,075	7,803	17,545	8,633

	2005-06		2006-07		2007-08	
	Students Entitled ^{1,2} (£1000s) ³	Total Entitlement (£1000s) ³	Students Entitled ^{1,2} (£1000s) ³	Total Entitlement (£1000s) ³	Students Entitled ^{1,2} (£1000s) ³	Total Entitlement (£1000s) ³
Total Loan⁴	84,065	191,707	80,450	185,813	78,175	184,312
Non Income Assessed Loan	83,155	66,835	79,635	62,959	77,465	61,222
Income Assessed Loan	62,350	115,981	59,310	113,982	57,480	114,309
Additional Income Assessed loan	17,505	8,891	16,980	8,872	16,405	8,782

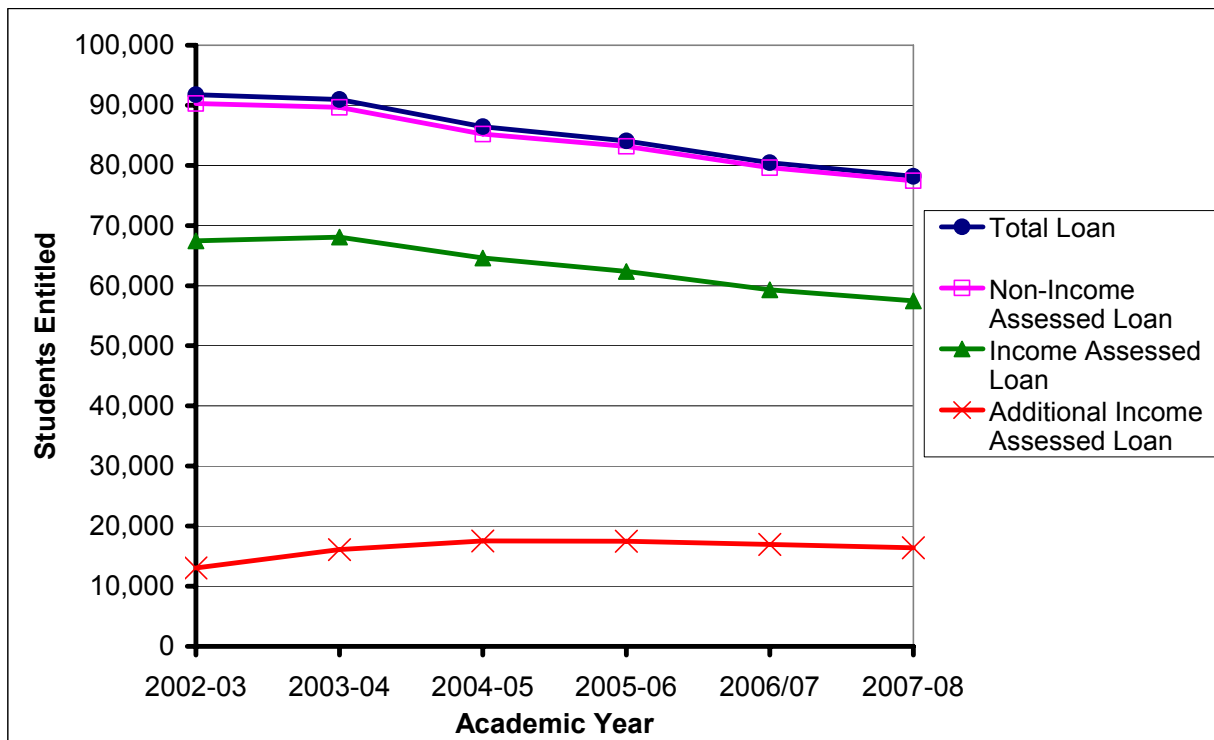
Source: SAAS management information.

1. Student loan entitlement is calculated by SAAS but the Student Loans Company extends the loan. These figures relate to entitlement rather than uptake which may be lower. Prior to 1999/00 students applied for a loan through their institution.
2. Student numbers have been rounded up or down to the nearest 5 (e.g. 1, 2 round to 0, 3, 4 round to 5). Both full and part-time students are included in the table.
3. Cash totals have been rounded to the nearest thousand and may not equal the sum of their constituent parts due to this rounding.
4. Each student is counted once in the 'total loan' row irrespective of the number of different loans they receive. For this reason the total number of students is lower than the sum of the number students entitled to support through each individual loan.

- **Non Income Assessed Loan** – The total number of students receiving the part of the loan where income is irrelevant. This will include those who have declared their income and those who want the loan but did not declare the income, as it may be too high to receive any income assessed support.

- **Income Assessed Loan** – Only includes those who have declared income (or are independent and get max loan) and the income is low enough to ensure they get some or all of the income assessed loan. Most students in this category *also* get the non income assessed loan.
- **Additional Income Assessed loan** – small extra loan available to those on very low incomes. Paid in addition to the income assessed loan and the non income assessed loan, therefore most students in this category should be included in those above.

Figure 3: Students assessed by SAAS¹ as entitled to loans, 2002-03 to 2007-08



Source: SAAS management information.

1. Student loan entitlement is calculated by SAAS but the Student Loans Company extends the loan. These figures relate to entitlement rather than uptake which may be lower. Prior to 1999/00 students applied for a loan through their institution.

Data for this chart is taken from Table 6.

12. Figure 3 shows that the number of students assessed by SAAS as being entitled to maintenance loans has fallen in each academic year from its peak level of 91,755 students in 2002-2003. The total number of students entitled to loans in academic year 2007-2008 (78,715) is 14.8% lower than in 2002-2003 and 2.8% lower than in 2006-2007. Numbers entitled to the non-income assessed and income assessed loans have decreased in each year since 2002-2003, whereas additional income assessed loan entitlements increased between 2002-2003 and 2004-2005 and then decreased to 16,405 in 2007-2008, a 6.5% decrease since their peak in 2004-2005. Table 6 shows that the overall value of loan authorisations has also fallen since 2002-2003 to £184.3 million in 2007-2008, a decrease of 19.4%.

Table 7: Students assessed by SAAS¹ as entitled to loans and actual loan take-up from the Student Loans Company 2002-03 to 2007-08²

Academic Year	Entitlement from SAAS		Actual SLC take-up		Actual take-up (SLC) versus entitlement (SAAS)	
	Number of Students ³	Total Entitlement (£1000s) ⁵	Number of Students ³	Amount Paid (£1000s) ⁴	Percentage of Students	Percentage of Amount Paid
2002-03	91,120	228,411	90,390	223,690	99.20	97.93
2003-04	90,305	222,848	89,325	217,373	98.92	97.54
2004-05	85,815	208,099	85,025	203,290	99.08	97.69
2005-06	83,385	191,367	82,645	187,460	99.11	97.96
2006-07	79,800	185,489	78,940	180,433	98.92	97.27
2007-08	77,580	184,014	76,690	178,322	98.85	96.91

Source: SAAS management information (entitlement), SLC management information (actual take-up).

1. Student loan entitlement is calculated by SAAS but the Student Loans Company extends the loan. These figures relate to entitlement rather than uptake which may be lower. Prior to 1999/00 students applied for a loan through their institution.
2. These figures include full time students only and as such are a correction of figures in previous publications for academic years 2002-2003 – 2006-2007 which included both full and part-time students in SAAS data but only full-time students in SLC data. In 2001-2002 86,545 full-time students applied for loans totalling £223,812,000. Of these 86,160 students (99.56%) went on to take out a total of £220,563,000 (98.55% of total amount applied for) with the SLC.
3. Student numbers have been rounded up or down to the nearest 5 (e.g. 1, 2 round to 0, 3, 4 round to 5).
4. Cash totals have been rounded to the nearest thousand.

13. Table 7 shows that, having had a loan entitlement calculated by SAAS, the vast majority (around 99%) of full-time students go on to take out a loan from the Student Loans Company. Furthermore almost all (97-98%) of the total loan amount authorised by SAAS is borrowed from the SLC.

Table 8: Students receiving awards from SAAS and total amount paid, 2002-03 to 2007-08

	2002-03		2003-04		2004-05	
	Students in receipt ¹	Total Amount Paid (£1000s) ²	Students in receipt ¹	Total Amount Paid (£1000s) ²	Students in receipt ¹	Total Amount Paid (£1000s) ²
Total Award Payments	56,485	84,491	58,610	90,396	57,825	80,087
Standard Maintenance Allowance (Postgraduates) ³	1,500	4,100	1,220	3,373	1,060	2,972
Standard Maintenance Allowance (Undergraduates) ⁴	925	1,525	200	395	90	225
Scottish Government Health Department Bursary	2,170	3,948	2,030	3,621	1,955	3,572
Travel Expenses	37,915	15,469	37,150	15,474	34,830	14,555
Young Students:						
Young Students Bursary ⁵	21,870	30,177	27,855	39,193	31,500	45,532
Students Studying Elsewhere in the UK						
Young Students Outside Scotland Bursary ⁶	325	147	605	281	795	384
Student Outside Scotland Bursary ⁷	-	-	-	-	-	-
Dependant's & Childcare:						
Dependants Grant ⁸	6,330	15,394	5,905	14,599	475	940
Lone Parents Grant	4,115	4,401	3,775	4,130	3,410	3,748
Lone Parents Childcare Grant ⁹	1,655	1,570	1,525	1,500	1,505	1,499
School Meals Grant ^{5,10,11}	5,360	2,188	5,075	2,075	-	-
Disabled Students:						
Disabled Students Allowance	2,040	5,128	2,410	5,429	2,775	6,512
Other :						
Adhoc Payments	335	246	235	175	125	118
Adjustment Payments	50	16	60	27	65	29
Two Homes Grant ¹¹	245	182	160	122	-	-

Source: SAAS management information.

1. Student numbers have been rounded up or down to the nearest 5 (e.g. 1, 2 round to 0, 3, 4 round to 5). Cells containing a dash represent 0 students. Each student is counted only once in the 'Total Awards' line irrespective of how many award types they receive. **2.** Cash totals have been rounded to the nearest thousand and may not equal the sum of their constituent parts due to this rounding. **3.** Postgraduate students excluding PGDE. Figures have been corrected to reflect changes to qualification categories as explained at Table 4. **4.** Includes undergraduate and PGDE students as they receive the same support package. Figures have been corrected to reflect changes to qualification categories as explained at Table 4. **5.** Introduced in 2001/02. **6.** Introduced in 2002/03. **7.** Introduced in 2006/07 for new young and mature students studying outside Scotland. **8.** Abolition of Dependents Grant for children at the end of 2003/04. **9.** Introduced in 2001/02 but paid through Adhoc payments in its initial year. **10.** Removed at the end of 2003/04. **11.** Errors from previous publications have been corrected. No students received these award types in 2004/05 - 2007/08.

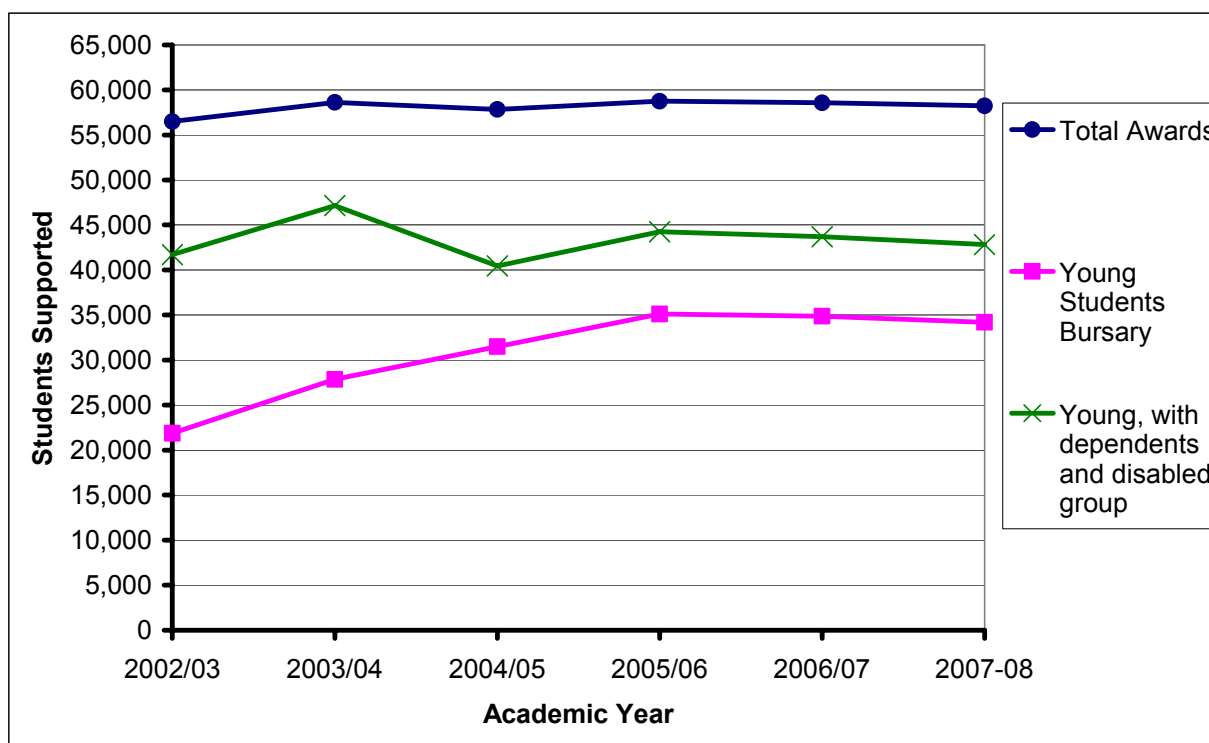
Table 8 (continued): Students receiving awards from SAAS and total amount paid, 2002-03 to 2007-08

	2005-06		2006-07		2007-08	
	Students in receipt ¹	Total Amount Paid (£1000s) ²	Students in receipt ¹	Total Amount Paid (£1000s) ²	Students in receipt ¹	Total Amount Paid (£1000s) ²
Total Award Payments	58,750	99,825	58,565	102,872	58,230	104,773
Standard Maintenance Allowance (Postgraduates) ³	1020	2,993	925	2,910	1,040	3,269
Standard Maintenance Allowance (Undergraduates) ⁴	50	130	45	122	40	122
Scottish Government Health Department Bursary	1,965	3,573	1,940	3,619	1,935	3,667
Travel Expenses	32,625	14,177	32,970	14,666	33,710	15,170
Young Students:						
Young Students Bursary ⁵	35,105	65,355	34,875	66,760	34,200	66,877
Students Studying Elsewhere in the UK						
Young Students Outside Scotland Bursary ⁶	860	428	630	319	375	189
Student Outside Scotland Bursary ⁷	-	-	625	1,024	1,020	1,703
Dependant's & Childcare:						
Dependants Grant ⁸	430	882	370	773	335	697
Lone Parents Grant	3,230	3,632	3,025	3,498	2,920	3,427
Lone Parents Childcare Grant ⁹	1,450	1,495	1,415	1,470	1,375	1,463
School Meals Grant ^{5,10,11}	-	-	-	-	-	-
Disabled Students:						
Disabled Students Allowance	3,165	7,031	3,385	7,552	3,625	8,059
Other :						
Adhoc Payments	100	114	105	121	70	92
Adjustment Payments	35	15	80	38	70	38
Two Homes Grant ¹¹	-	-	-	-	-	-

Source: SAAS management information.

1. Student numbers have been rounded up or down to the nearest 5 (e.g. 1, 2 round to 0, 3, 4 round to 5). Cells containing a dash represent 0 students. Each student is counted only once in the 'Total Awards' line irrespective of how many award types they receive. 2. Cash totals have been rounded to the nearest thousand and may not equal the sum of their constituent parts due to this rounding. 3. Postgraduate students excluding PGDE. Figures have been corrected to reflect changes to qualification categories as explained at Table 4. 4. Includes undergraduate and PGDE students as they receive the same support package. Figures have been corrected to reflect changes to qualification categories as explained at Table 4. 5. Introduced in 2001/02. 6. Introduced in 2002/03. 7. Introduced in 2006/07 for new young and mature students studying outside Scotland. 8. Abolition of Dependents Grant for children at the end of 2003/04. 9. Introduced in 2001/02 but paid through Adhoc payments in its initial year. 10. Removed at the end of 2003/04. 11. Errors from previous publications have been corrected. No students received these award types in 2004/05 - 2007/08.

Figure 4: Students receiving awards from SAAS, 2002-03 to 2007-08



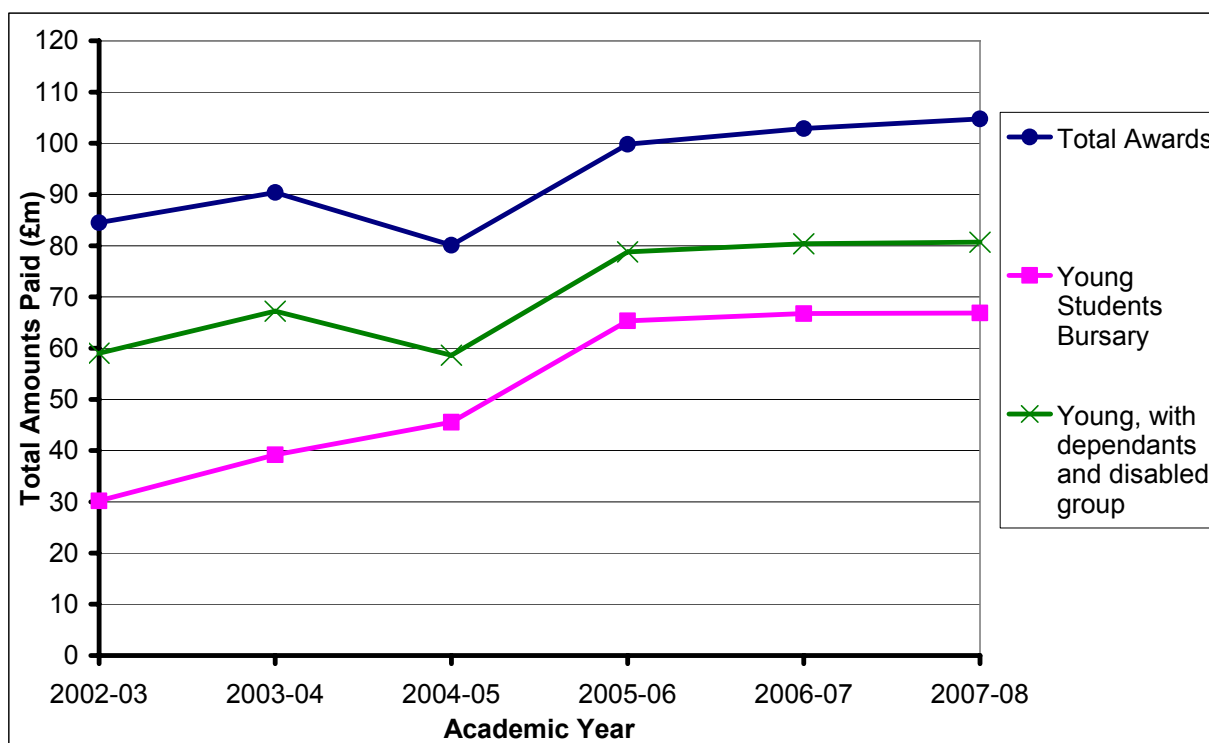
Source: SAAS management information.

Data for this chart taken from Table 8.

The 'young, with dependent and disabled group' includes those students receiving Young Students Bursary, Young Students Outside Scotland Bursary, Dependants Grant, Lone Parents Grant, Lone Parents Childcare Grant and Disabled Students Allowance.

14. Table 8 and Figure 4 show that the total number of students receiving an award from SAAS has gone up by 3.1% since 2002-03, from 56,485 to 58,230, though numbers have decreased by 0.9% since 2005-2006. Recipients of awards in the 'young, with dependents and disabled group' (consisting of young students – usually aged less than 25 at the start of their course, students with dependents – either children or partners - and students with a disability who receive Disabled Student's Allowance) have decreased by 3.2% since 2005-2006 to 42,825. This is higher than the lowest number seen in 2004-05 after the abolition of Dependents Grant for children¹, and is 2.7% higher than in 2002-2003. Students in this group make up 73.5% of all award recipients in 2007-2008. The number of students in receipt of Young Students Bursary has increased by 56.4% since 2002-2003 to 34,200. This is, however, 2.6% lower than the peak level of 35,105 in 2005-2006.

Figure 5: Total amounts paid in award payments (£m), 2002-03 to 2007-08



Source: SAAS management information.

Data for this chart taken from Table 8.

The 'young, with dependant and disabled group' includes those students receiving Young Students Bursary, Young Students Outside Scotland Bursary, Dependants Grant, Lone Parents Grant, Lone Parents Childcare Grant and Disabled Students Allowance.

15. Figure 5 and Table 8 show that total award payments have increased by 24.0% since academic year 2002-2003, despite a dip in 2004-2005 relating to the abolition of Dependents Grant for children¹, to £104.8 million in 2007-2008. Award payments to the 'young, with dependants and disabled group' follow the same trend and have increased by 36.8% since 2002-2003 although amounts paid out in 2007-2008 were 0.4% higher than in 2006-2007 compared to an increase of 1.9% for all awards. The additional increase in total awards is attributed to increases in payments of Students Outside Scotland Bursary (SOSB), Standard Maintenance Allowance and Travel Expenses which are not included in the 'young, with dependants and disabled' group of awards.

16. Payments of Young Students Bursary (YSB) have increased in each academic year since 2002-2003 and were 121.6% higher in 2007-2008 at £66.9 million. The most pronounced rise occurred between academic years 2004-2005 and 2005-2006 when YSB payments grew by 43.5%. This was a result of changes to the income thresholds meaning that more students were eligible for the maximum payment and an above inflation increase of this payment. Increases in YSB awards paid out have been smaller in more recent academic years: between 2006-2007 and 2007-2008 there was a rise of 0.2% compared to 2.2% between 2005-2006 and 2006-2007. This reflects the decrease in YSB recipients seen in Figure 4 and Table 8. Awards paid to the 'young, with dependants and disabled' group make up 77.0% of all award payments in 2007-2008 and YSB payments make up 82.9% of payments made to this group.

Table 9: Students in receipt of Disabled Students' Allowance from SAAS, 2002-03 to 2007-08. Disability type & total amount paid

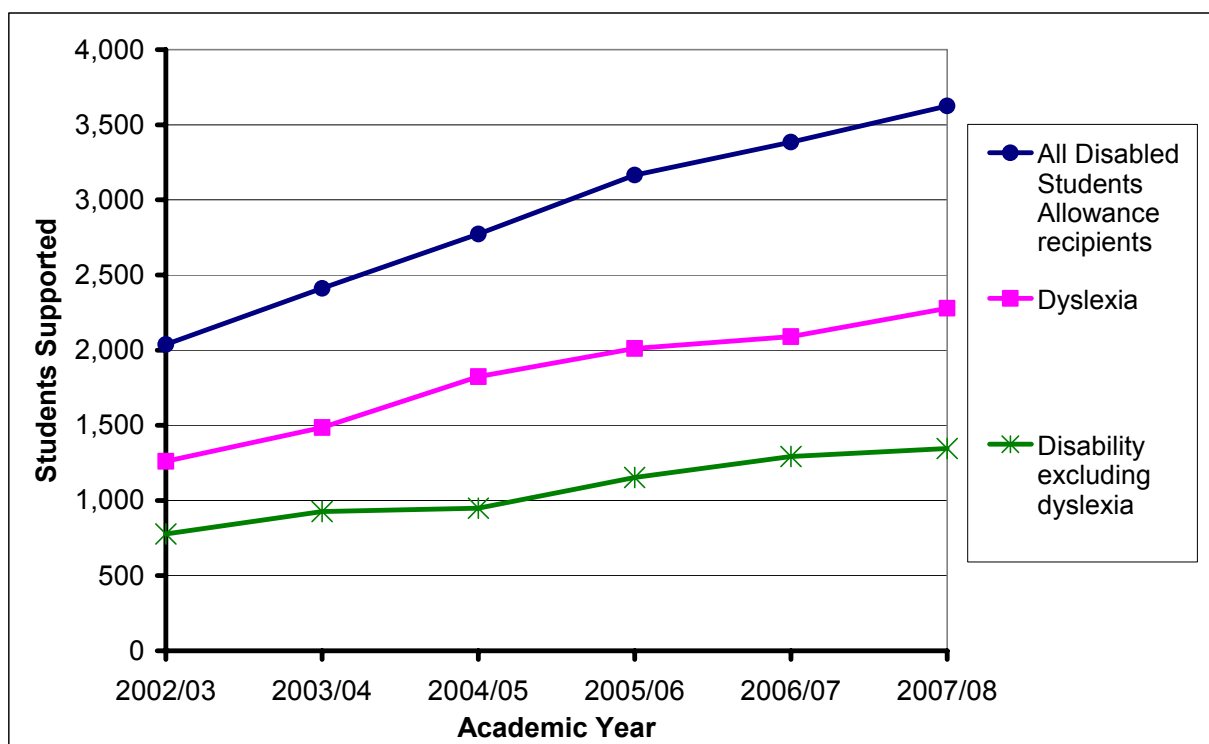
	2002-03		2003-04		2004-05	
	Students in receipt ¹	Total Amount Paid (£1000s) ²	Students in receipt ¹	Total Amount Paid (£1000s) ²	Students in receipt ¹	Total Amount Paid (£1000s) ²
Total	2,040	5,128	2,410	5,429	2,775	6,512
Dyslexia	1,260	2,849	1,485	2,860	1,825	3,727
Blind/Partially Sighted	90	425	90	423	65	351
Deaf Partial Hearing	95	417	80	308	80	338
Wheelchair/mobility	115	357	95	245	105	360
Mental Health/Personal Care	55	133	80	165	105	228
Unseen Disability	125	201	75	140	80	138
Multiple Disabilities	145	396	195	535	155	479
Other Disability	150	350	315	752	355	891

	2005-06		2006-07		2007-08	
	Students in receipt ¹	Total Amount Paid (£1000s) ²	Students in receipt ¹	Total Amount Paid (£1000s) ²	Students in receipt ¹	Total Amount Paid (£1000s) ²
Total	3,165	7,031	3,385	7,552	3,625	8,059
Dyslexia	2,010	3,999	2,090	3,871	2,280	4,373
Blind/Partially Sighted	80	363	100	486	105	459
Deaf Partial Hearing	95	363	100	500	100	470
Wheelchair/mobility	95	283	160	507	165	594
Mental Health/Personal Care	120	212	175	366	190	438
Unseen Disability	100	159	160	293	245	454
Multiple Disabilities	225	628	170	515	230	603
Other Disability	435	1,025	430	1,013	310	669

Source: SAAS management information.

1. Student numbers have been rounded up or down to the nearest 5 (e.g. 1, 2 round to 0, 3, 4 round to 5).
2. Cash totals have been rounded to the nearest thousand and may not equal the sum of their constituent parts due to this rounding.

Figure 6: Students in receipt of Disabled Students' Allowance from SAAS, 2002-03 to 2007-08



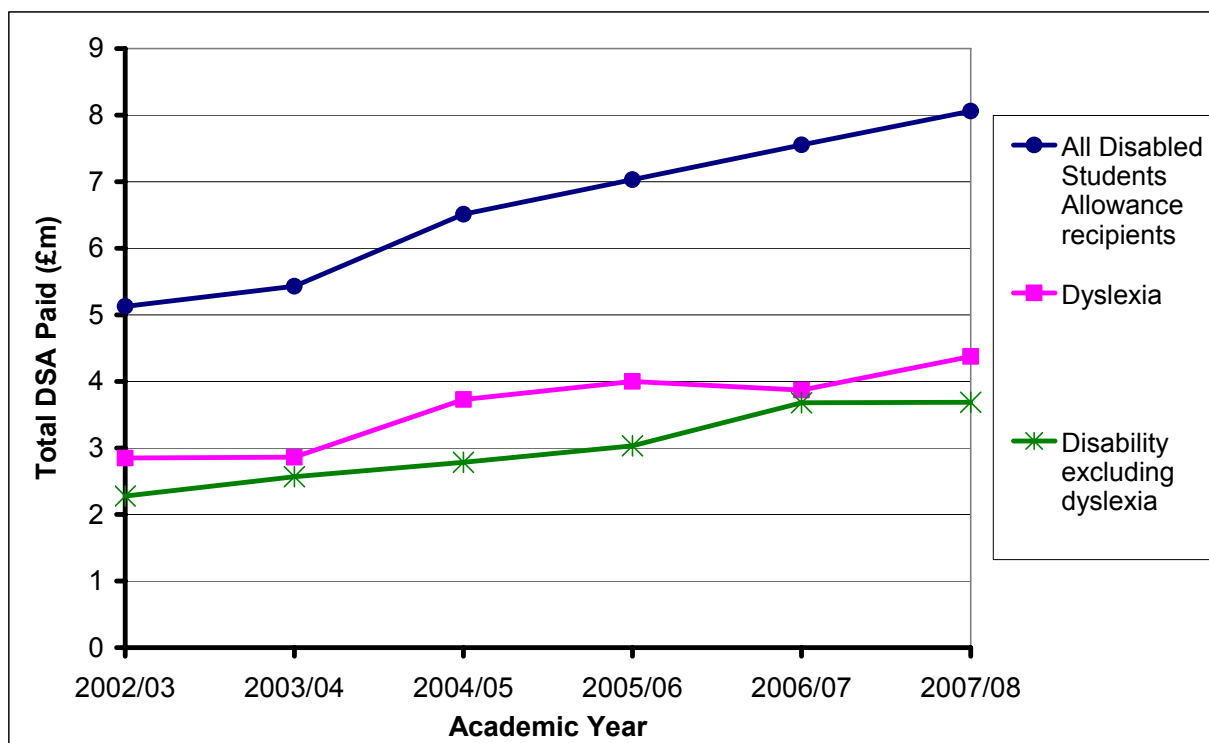
Source: SAAS management information.

Data for this chart is taken from Table 9.

The 'disability excluding dyslexia' group includes those students classed as blind/partially sighted, deaf/partial hearing, wheelchair/mobility, mental health/personal care, unseen disability, multiple disability and other disability.

17. Figure 6 and Table 9 show that the number of students in receipt of Disabled Students Allowance (DSA) has increased in each academic year since 2002-2003. In 2007-2008 3,625 students received DSA; this is 77.9% higher than in 2002-2003 and 7.1% higher than in 2006-2007. DSA recipients with dyslexia have increased by 80.7% since 2002-2003 compared with a rise of 73.2% in numbers excluding dyslexia. Between 2006-2007 and 2007-2008 the number of DSA students with dyslexia increased by 9.0%, compared with a 4.1% rise in recipients with disabilities excluding dyslexia. In 2007-2008 62.9% of students receiving DSA had dyslexia.

Figure 7: Total Disabled Students' Allowance paid (£m) by SAAS, 2002-03 to 2007-08



Source: SAAS management information.

Data for this chart is taken from Table 9.

The 'disability excluding dyslexia' group includes those students classed as blind/partially sighted, deaf/partial hearing, wheelchair/mobility, mental health/personal care, unseen disability, multiple disability and other disability.

18. Figure 7 and Table 9 show that the amount of Disabled Students Allowance (DSA) paid out has increased by 57.2% since 2002-2003 to £8.1 million in 2007-2008; this is 6.7% higher than in 2006-2007. After decreasing between 2005-2006 and 2006-2007 the amount of DSA paid to dyslexic students has increased by 13.0% and, at £4.4 million, is 53.5% higher than in 2002-2003. DSA payments to students with all other disabilities have risen by 61.8% since 2002-2003 to £3.7 million in 2007-2008, an increase of 0.2% since 2006-2007. 54.3% of the total amount of DSA payments in 2007-2008 went to students with dyslexia.

Table 10: Parental/spousal residual income details of students receiving support from SAAS, 2007-08

	2007/8		
	Student receiving Award ¹	Students receiving fees ^{1,2}	Students entitled to Loan ^{1,3}
Total⁴	58,230	114,100	78,175
< £10k	9,955	9,885	7,670
£10,000 - £19,999	12,605	12,530	9,630
£20,000 - £29,999	10,520	10,675	8,415
£30,000 - £39,999	5,835	9,050	7,750
£40,000 - £49,999	3,275	6,560	5,875
£50,000 - £59,999	1,055	3,840	3,510
£60,000 - £69,999	320	2,040	1,855
£70,000 - £79,999	110	945	870
£80,000 - £99,998	65	730	700
£99,999 and above	45	610	560
Income not declared/required⁵	3,665	40,680	15,250
Exempt from parental/spousal contribution⁶	10,785	16,560	16,095

Source: SAAS management information.

1. Student numbers have been rounded up or down to the nearest 5 (e.g. 1, 2 round to 0; 3, 4 round to 5)
2. Fee loans were introduced for new students studying outside Scotland in the rest of the UK in 2006-2007. Students receiving fee loans are included under 'fees'.
3. Student loan entitlement is calculated by SAAS but the Student Loans Company extends the loan. These figures relate to entitlement rather than uptake which may be lower. Prior to 1999/00 students applied for a loan through their institution.
4. Totals may not equal the sum of their constituent parts due to rounding.
5. This group includes those who have not declared income because they have applied for non-income assessed support only and those whose income is so low that they receive the full support package.
6. This group comprises all those who have no benefactor to assess for a contribution to their support. Such students will be entitled to maximum loan amounts and supplementary grants.

19. Table 10 shows that 38.7% of those receiving award support have declared parental/spousal incomes of £20,000 or less compared to 19.6% of those receiving fees or fee loans and 22.1% of those receiving maintenance loans. The majority of awards are income assessed although Disabled Students Allowance is not³. The 'income not declared/required' category accounts for 6.3% of all those receiving awards, 35.7% of those receiving fees or fee loans and 19.5% of those receiving maintenance loans. This category includes both those who have not declared income because they have applied for non-income assessed support only and those whose income is so low they automatically receive the full support package. 1,940 students in this category receive the maximum Young Students Bursary of £2,510.

³ Lone Parent's Childcare Grant is not income assessed but it is only available to students who are already receiving Lone Parent's Grant which is income assessed.

Table 11: Students receiving support from SAAS, 2007-08. Institution location, type of institution & level of support

		2007/08					
		Award		Fees ¹		Loans ²	
		Students in receipt ³	Total Amount Paid (£1000s) ⁴	Students in receipt ³	Total Amount Paid (£1000s) ⁴	Students in receipt ³	Total Amount Paid (£1000s) ⁴
Total	Total	58,230	104,773	114,100	169,528	78,175	184,312
	HEI ⁵	42,945	77,178	91,375	141,254	61,890	136,437
	FEC ⁶	15,185	27,433	22,560	27,964	16,130	47,354
	Other institution ⁷	105	161	165	310	155	521
Scotland	Total	56,195	101,239	111,130	162,477	74,090	173,364
	HEI ⁵	41,140	74,035	88,690	134,864	58,180	126,627
	FEC ⁶	15,000	27,129	22,330	27,433	15,820	46,428
	Other institution ⁷	55	74	110	180	90	308
Outwith Scotland	Total	2,035	3,534	2,965	7,051	4,090	10,948
	HEI ⁵	1,805	3,142	2,680	6,391	3,710	9,810
	FEC ⁶	185	304	230	531	310	926
	Other institution ⁷	50	87	55	129	70	212

Source: SAAS management information.

1. Fee loans were introduced for new students studying outside Scotland in the rest of the UK in 2006-2007. Students receiving fee loans are included under 'fees'.
2. Student loan entitlement is calculated by SAAS but the Student Loans Company extends the loan. These figures relate to entitlement rather than uptake which may be lower. Prior to 1999/00 students applied for a loan through their institution.
3. Student numbers have been rounded up or down to the nearest 5 (e.g. 1, 2 round to 0; 3, 4 round to 5). Totals may not equal the sum of their constituent parts due to this rounding.
4. Cash totals have been rounded to the nearest thousand and may not equal the sum of their constituent parts due to this rounding.
5. HEI = Higher Education Institution.
6. FEC = Further Education College.
7. Other institution' types include NHS colleges, theological colleges, Adult Education colleges and others.

20. Table 11 shows students in receipt of awards, fees and entitled to maintenance loans and amounts paid out in 2007-2008 by institution type and location. The majority of support, irrespective of institution location, is paid to students studying at HEIs (73.7% of awards, 83.3% of fees and 74.0% of loans). Of the £458.6 million paid out in support by SAAS in 2007-2008:

- £437.1 million (95.3%) went to students studying at an institution in Scotland
- £354.9 million (77.4%) was spent supporting students at HEIs.

Supplementary Tables – Not National Statistics

21. The previous tables concern mainstream students supported by SAAS and the amount support received. They do not include nursing and midwifery pre-registration diploma and degree students who started their courses in academic year 2001-2002 or later. Such students are supported by the Scottish Government Health Directorate's Nursing and Midwifery Students' Bursary Scheme (NMSB) when they study in Scotland. Table 12 shows the number of NMSB students and the total amount of support they received in academic years 2006-2007 and 2007-2008. NMSB students receive a different support package to other SAAS funded students, details of which are provided on SAAS's website⁴.

Table 12: Nursing and midwifery students receiving support through the Scottish Government Health Directorate's Nursing and Midwifery Students' Bursary Scheme (NMSB). NOT NATIONAL STATISTICS

Academic Year	Students Receiving Support¹	Total Support (£000s)²
2006-07	9,575	63,281
2007-08	10,075	72,261

Source: SAAS NMSB management information.

1. Student numbers have been rounded up or down to the nearest 5 (e.g. 1, 2 round to 0; 3, 4 round to 5).
2. Cash totals have been rounded to the nearest thousand.

22. Table 12 shows that the number of students supported through NMSB has increased by 5.2% from academic year 2006-2007 to 10,075 in 2007-2008. The amount of support paid has increased from £63.3 million to £72.3 million, a rise of 14.2%.

23. In addition to support provided by SAAS, assistance is also available to students who find themselves experiencing financial difficulties through the Higher Education Discretionary (formerly Hardship) Fund and the Higher Education Childcare Fund (formerly Mature Students' Bursary Fund). Table 13 shows the amount spent to assist higher education students through these funds and the number of times help was provided. Discretionary funding is paid in addition to other forms of student support for Scottish domiciled students and is also available to eligible students from the rest of the UK who study in Scotland. Nursing and midwifery students are not eligible. Students can receive help from both the Childcare Fund and the Discretionary Fund in the same academic year and are also able to receive help more than once from each. The table therefore shows instances of assistance from the funds rather than student numbers. This overlap does not affect amounts.

⁴ http://www.saas.gov.uk/student_support/special_circumstances/nursing_midwifery.htm

Table 13: Instances of assistance and amount of support provided through the Higher Education Discretionary Fund and the Higher Education Childcare Fund academic years 2002-03 – 2006-07. NOT NATIONAL STATISTICS

Academic Year	Discretionary Fund		Childcare Fund	
	Instances of Assistance ^{1,2}	Amounts issued by institutions (£000s) ^{3,4}	Instances of Assistance ^{1,2,5}	Amounts issued by institutions (£000s) ⁴
2002-03	14,705	6,128	6,815	5,018
2003-04	10,775	6,415	6,180	5,899
2004-05	10,930	6,794	5,855	6,537
2005-06	12,395	9,970	1,715	3,094
2006-07 ⁶	13,995	11,360	1,260	3,228

Source: SAAS management information returns for Scottish institutions.

1. Students can receive help from both the Discretionary Fund and the Childcare Fund in the same year so the 'instances of assistance' from each fund cannot be summed to a total. Furthermore as students can receive help more than once in an academic year from each fund there may be an element of double counting in the student numbers for each fund.
2. 'Instances of assistance' have been rounded up or down to the nearest 5 (e.g. 1, 2 round to 0; 3, 4 round to 5).
3. The 'Amounts issued by institutions' figures are the amounts distributed to students by institutions. At the beginning of the academic year each institution is allocated a pot of money for these funds by SAAS. Any of the allocation which has not been spent is returned to SAAS as unused funds. Any unused funds received by SAAS are redistributed the following January.
4. 'Amounts issued' are rounded up or down to the nearest thousand.
5. For the Childcare Fund, a figure for number of students assisted was not available. However information on the number of students who applied and the number of students who had their application refused was available so the 'instances of assistance' figures are the net number as this should equal the number of students assisted.
6. Academic year 2006-2007 is the latest for which information on 'instances of assistance' under both funds is available.

24. Table 13 shows that instances of assistance through each fund have decreased since 2002-2003 by 4.9% (715) and 81.5% (5,555) for the Discretionary and Childcare funds respectively. However the Discretionary Fund has shown an increase in activity from academic year 2004-2005 onwards and in 2006-2007 instances of assistance were 12.9% higher than in the previous year. Amounts issued by institutions in 2006-2007 were 13.9% higher for the Discretionary Fund and 4.3% higher for the Childcare Fund than in 2005-2006. Overall spending by institutions on both funds has increased by 30.9% since 2002-2003 from £11.1 million to £14.6 million.

SCOTTISH GOVERNMENT STATISTICIAN GROUP

OUR AIM

To provide relevant and reliable information, analysis and advice that meet the needs of government, business and the people of Scotland.

OBJECTIVES

1. To produce statistics and analysis relevant to user needs by
 - Developing our understanding of customer requirements to ensure statistics are kept relevant and analysis is well targeted;
 - Developing the range of statistics and analysis we produce;
 - Where practicable improving timeliness;
 - Providing more statistics disaggregated by age, gender and ethnicity;
 - Developing more data for small areas through the Neighbourhood Statistics project;
 - Contributing to production of comparable statistics across the UK and internationally.
2. To ensure effective use of our statistics by
 - Contributing more directly to policy processes inside and where possible outside government;
 - Improving access to and presentation of data and analysis;
 - Improving the advice provided on statistics.
3. To work effectively with users and providers by
 - Maintaining arrangements to consult and involve users and providers;
 - Involving users and providers in planning developments in outputs and processes;
 - Minimising the burden on data providers through dropping or streamlining collections as appropriate, to ensure the benefits of the information justify the costs of collection.
4. To develop the quality of statistics by
 - Assuring and improving quality as an integral part of data collection and analysis and through regular reviews in line with National Statistics quality strategy;
 - Developing statistical methods, systems and classifications;
 - Working with the rest of the Government Statistical Service to develop joint approaches/solutions where appropriate.
5. To assure the integrity of statistics by
 - Maintaining and promoting integrity through implementation of the National Statistics Code of Practice and related protocols;
 - Safeguarding the confidentiality of data subjects.
6. To ensure the efficient and effective delivery of statistics products and services by
 - Making best use of all sources including administrative sources;
 - Working with other analysts to maximise the contribution of our own and other analysts' work;
 - Ensuring value for money;
 - Making best use of Information and Communications Technology;
 - Ensuring effective communication within the Statistician Group.
7. To develop our workforce and competences
 - Ensuring recruitment of staff with the necessary skills and potential;
 - Ensuring development of expertise amongst existing staff;
 - Promoting and upholding the standards of the statistics profession.

This is a National Statistics publication

"This is a National Statistics publication. It has been produced to high professional standards set out in the National Statistics Code of Practice Protocol - see www.statistics.gov.uk/about_ns/cop/default.asp

These statistics undergo regular quality assurance reviews to ensure that they meet customer needs. They are produced free from any political interference."

Details of pre-release access will be provided in the Scottish Government Statistics Website under 'Forthcoming Releases'

Correspondence and enquiries

Enquiries on Higher Education Student Support in Scotland 2007-08 should be addressed to:

Debbie Amabile
ASU LLL Lifelong Learning Statistics
Education Analytical Services
3rd Floor Meridian Court
Glasgow G2 6AT
Telephone: +44 141 242 0271; Fax: +44 141 2425455
e-mail: Debbie.Amabile@scotland.gsi.gov.uk

General enquiries on Scottish Government statistics can be addressed to:

Angela McLean
Office of the Chief Statistician
Scottish Government
3 Floor West Rear, St Andrews House
EDINBURGH EH1 3DG
Telephone: (0131) 244 0442; Fax: (0131) 244 2223
e-mail: statistics.enquiries@scotland.gsi.gov.uk

Advice on specific areas of Scottish Government statistical work can be obtained from staff at the telephone numbers given below:

Scottish Government Statistics contacts

Agricultural census and labour force	(0131) 244 6150
Business	(0141) 242 5446
Community Care	(0131) 244 3777
Courts and law	(0131) 244 2227
Environment	(0131) 244 0445
Equality	(0131) 244 0324
Fisheries	(0131) 244 6441
Further and Higher Education	(0141) 242 0273
Health	(0131) 244 3432
Housing	(0131) 244 7236
Income, Tax and Benefits	(0131) 244 2583
Labour market	(0141) 242 5446
Local government finance	(0131) 244 7033
Planning	(0131) 244 0439
Prisons	(0131) 244 2147
Recorded crime	(0131) 244 2635
Schools – pupils and teachers	(0131) 244 1689
Schools – qualifications	(0131) 244 0315
Scottish Government personnel	(0131) 244 3926
Scottish Neighbourhood Statistics	(0131) 244 0442
The Economy	(0131) 244 2234
Transport	(0131) 244 7255

Other contacts for Scottish statistics

Forestry Commission	(0131) 314 6337
General Register Office for Scotland - Vital statistics and publications	(0131) 314 4243
- Population statistics, census statistics or digital boundary products	(0131) 314 4254
The Scottish Funding Councils for Higher and Further Education	(0131) 313 6575

For **general enquiries about National Statistics** in the United Kingdom Government contact the National Statistics Public Enquiry Service on

020 7533 5888

minicom: 01633 812399
Email: info@statistics.gov.uk
Fax: 01633 652747
Letters: room DG/18, 1 Drummond Gate,
LONDON SW1V 2QQ

You can also find National Statistics on the internet - go to www.statistics.gov.uk

If you would like to be consulted about new or existing statistical collections or receive notification of forthcoming statistical publications, please register your interest on the Scottish Government ScotStat website at www.scotland.gov.uk/Topics/Statistics/scotstat

Current contact points, e-mail addresses and the publications listed below as well as a range of other statistical publications can be found on the Scottish Government Web site at www.scotland.gov.uk/stats

Further information on the General Register Office for Scotland is available on the website www.gro-scotland.gov.uk

Complaints and suggestions

If you are not satisfied with our service, please write to the Chief Statistician, Mr Rob Wishart, 3R.01, St Andrews House, Edinburgh, EH1 3DG, Telephone: (0131) 244 0302, e-mail rob.wishart@scotland.gsi.gov.uk. We also welcome any comments or suggestions that would help us to improve our standards of service.

Crown Copyright

Brief extracts from the Crown Copyright material in this publication may be reproduced provided the source is fully acknowledged.