

GYPSIES/TRAVELLERS IN SCOTLAND

The Twice Yearly Count – No. 13: January 2008

SUMMARY OF FINDINGS

- The January 2008 count recorded a total of 455 Gypsies/Travellers households in Scotland, living on Council/Registered Social Landlord (RSL) sites, private sites and unauthorised encampments. This is estimated to represent a population of around 1,547 people. This represents a small reduction in the size of the January 2006 and 2007 populations of 1,628 and 1,653 respectively.
- There were 276 households living on Council/RSL sites, 81 on private sites and 98 on unauthorised encampments (comparable figures for January 2007 were 295 on Council/RSL sites, 159 on private sites and 97 on unauthorised encampments).
- Of the total number of households, 61% were living on Council/RSL sites, 18% on private sites and 22% on unauthorised encampments.
- There are currently 32 Council/RSL sites across Scotland. 29 of these operate all year round and 3 are only open in the summer. These sites provide a total of 500 pitches (down from 508 at the time of the July 2007 count) of which 321 (64%) are currently tenanted, 70 (14%) are available for let but untenanted and 109 (22%) are unavailable for letting.
- Eight Council/RSL sites were operating at full capacity. A site in Glasgow and another in North Lanarkshire remain completely unoccupied, and a site in Clackmannanshire was closed for refurbishment during the count. Three seasonal sites were unoccupied at the time of the count.
- 63% of households based on Council/RSL sites had been tenants for over a year. 32% of all households had held their tenancies for 5 years or more.
- At the time of the count, there were 19 private sites in existence, 16 of which operate all year round and 3 of which are seasonal and open only in summer. 81 households were living on private sites. The great majority (90%) of households on private sites had been there for 4 weeks or longer.
- The number of unauthorised encampments at the time of the January 2008 count stood at 20 across 10 local authorities. They varied in size from 2 to 21 households.
- Around 49% of the Gypsies/Travellers population living on Council/RSL sites is aged 19 or under, compared to only 23% in the wider Scottish population; conversely, only 7% of Gypsies/Travellers are over 60, compared to around 22% of the general population

A report by Craigforth on behalf of
Scottish Government Social Research

CONTENTS		Page
1.	INTRODUCTION	4
2.	OVERALL TRENDS	6
3.	COUNCIL/RSL SITES	11
4.	PRIVATE SITES	21
5.	UNAUTHORISED ENCAMPMENTS	25
6.	APPENDIX	31

TABLE OF FIGURES

Figure 2.1: Gypsies/Travellers Population – Summer and Winter 2001 to 2008	6
Figure 2.2: Winter Population of Gypsies/Travellers January 2001 to January 2008	7
Figure 2.3: Distribution of All Households and Gypsy/Traveller Households January 2008	10
Figure 3.1: Number of Households on Council/RSL Sites (Winter) January 2001 to January 2008	15
Figure 4.1: Number of Households on Private Sites (Winter) January 2001 to January 2008	22
Figure 5.1: Number of Households on Unauthorised Encampments (Winter) January 2001 to January 2008	26

INDEX OF TABLES

Table 2.1: Gypsies/Travellers Households by Local Authority Area and Type of Site January 2005 – January 2008	8
Table 2.2 Change in Winter (January) Households by Region	9
Table 3.1: Pitch Provision and Occupancy Profile by Local Authority January 2008	14

Table 3.2 Unavailable Pitches	15
Table 3.3: Demographic Comparison Gypsies/Travellers on Council/RSL Sites/Scotland as a Whole	17
Table 3.4: Length of Tenancy Profile by Local Authority Area January 2008	19
Table 4.1: Households Living on Private Sites by Local Authority Area January 2008	23
Table 4.2: Private Sites at January 2008	24
Table 5.1: Number of Households on Unauthorised Encampments (Winter) January 2004 to January 2008	28
Table 5.2: Visits to Known Encampment Locations August 2007-January 2008, by Local Authority Area	30

APPENDIX OF TABLES

Table 1: Council/RSL Sites: Pitch Occupancy by Site.....	32
Table 2: Council/RSL Sites: Length of Tenancy Profile by Local Authority Area January 2008.....	33
Table 3: Council/RSL Sites: Movement Away From Sites by Local Authority Area January 2008.....	34
Table 4: Council/RSL Sites: Tenancy Change and Demand by Local Authority Area January 2008.....	35
Table 5: Council/RSL Sites: Age Structure Profile by Site.....	36
Table 6: Private Sites: Availability and Usage	37
Table 7: Characteristics of Unauthorised Encampments Occupied.....	38
Table 8: Use of Unauthorised Encampments in Last 6 months	39
Table 9: Gypsies/Travellers Households by Local Authority Area and Type of Site January 2008.....	40

Acknowledgement

Thanks to all the local authority and Registered Social Landlord (RSL) staff who assisted with the completion of the January 2008 Count, and those who gave their input into the consultation for the revised form.

1. INTRODUCTION

1.1 Gypsies/Travellers are a small but distinctive ethnic and cultural minority within the Scottish population. The Scottish Government recognises that Gypsies/Travellers have specific requirements and that they should receive the same level of protection from prejudice and discrimination as other ethnic minority groups in Scotland. The definition of Gypsies/Travellers excludes Occupational/Show Travellers and New (Age) Travellers.

1.2 In July 1998, the former Scottish Executive (now Scottish Government) introduced a series of Twice Yearly Counts of this population (undertaken in January and July) to establish standardised and consistent estimates across Scotland. The purpose of the count is to understand more fully the characteristics of this population and to assist and inform the development of public policies and services for Gypsies/Travellers, both nationally and locally.

1.3 The count is based on an estimate of the number of Gypsies/Travellers households living on:

- Sites provided by Councils or Registered Social Landlords (RSLs)
- Privately owned sites
- Unauthorised encampments.

1.4 It is therefore a count of the site/encampment based population only and does not seek to capture those living in ordinary housing. Reluctance to self-identify makes the latter difficult to quantify.

1.5 Travelling extensively for some or all of the year among some Scottish based Gypsies/Travellers has become less common than in the past and this is particularly true of those who have become settled for long periods of time on official Council/RSL or private sites. For others, travelling is still very much part of their culture and lifestyle.

1.6 The incidence of travelling means that the population of Gypsies/Travellers in Scotland can vary considerably at different points in time. This is particularly true between the winter and summer months.

1.7 The questionnaire distributed for the January 2008 count has been revised in consultation with the Scottish Government and users of the form. The revised form now gives much more space for recording activity on unauthorised encampments throughout the six months, rather than on the day of the count alone. Additionally, the form now seeks more exact information on age groups, places of origin and patterns of movement; and looks for more precise information on the unavailability of pitches and reasons for this.

1.8 Accordingly, this report follows a different format than previously published reports on the Twice Yearly Count. It focuses more on overall trends and information at local authority area level rather than on the details of individual sites.

1.9 Due to unavoidable and unforeseen circumstances, no return was received from West Lothian Council. Where possible, we have used the figures available from the January 2007 count as a guide, as indicated in the tables.

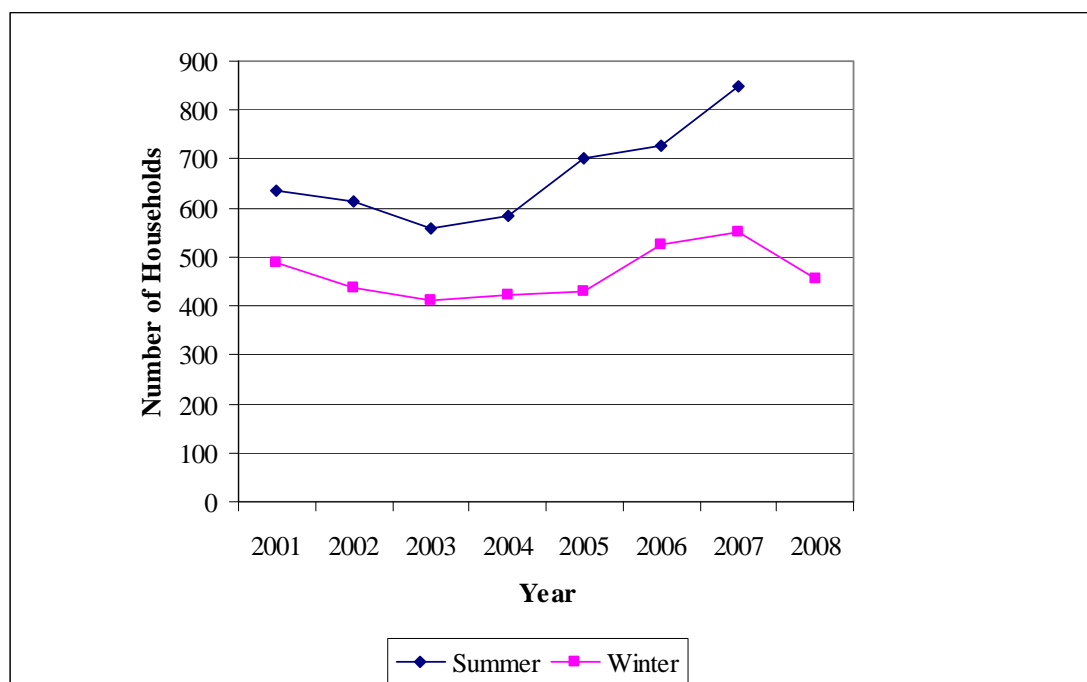
2. OVERALL TRENDS

2.1 Between 2001 and 2008, the winter (January) Gypsies/Travellers population has stood at around 450 households, although slightly higher populations of 525 and 551 households were recorded during January 2006 and January 2007. The number of households recorded in January 2008 was 455, representing a decrease of around 17% (96 households) on the previous year.

2.2 It is estimated that these 455 households are likely to represent a total population of around 1,547 people, accounting for 0.03% of the total Scottish population. This estimate is based on the application of an average household size of 3.4 and discussed further in the later section on Official Sites.

2.3 As can be seen from Figure 2.1 below, the summer population of Gypsies/Travellers is consistently higher than the winter population. In 2005, the summer population of Gypsies/Travellers increased significantly and has continued to rise, with a smaller scale increase in the winter population figures. Therefore, the average gap between the winter and summer populations has widened, to just over 40%.

Figure 2.1: Gypsies/Travellers Population – Summer and Winter 2001 to 2008



2.4 There has been some change to the distribution of the population by type of site. In January 2001, 60% of the total population was to be found on Council/RSL sites, with a little under a third on private sites (28%) and the smallest proportion on unauthorised encampments (11%). This balance has shifted within the last three years. In January 2006, for the first time a higher percentage (23%) of

Gypsies/Travellers stayed on unauthorised encampments rather than private sites (20%). This pattern has been repeated on this latest count, with 61% of households living on Council/RSL sites, 22% staying on unauthorised encampments and 18% on private sites.

2.5 Since 2001, the number of households living on private sites has varied considerably. While there seems to be a decline in the use of private sites, accurate data available on private sites can be unrepresentative of what is actually happening due to difficulties in collecting the data.

2.6 The number of households using unauthorised encampments during the winter counts has almost doubled since 2001, rising from 56 in January 2001 to 98 in January 2008. This is likely to reflect reluctance to use, or inability to access, other forms of site-based accommodation (official Council/RSL or private sites).

2.7 The changing trends in the use of different types of site among the winter population of Gypsies/Travellers in Scotland as a whole are illustrated in Figure 2.2. Table 2.1 that follows shows the trends by local authority area from January 2005 to January 2008.

**Figure 2.2: Winter Population of Gypsies/ Travellers
January 2001 to January 2008**

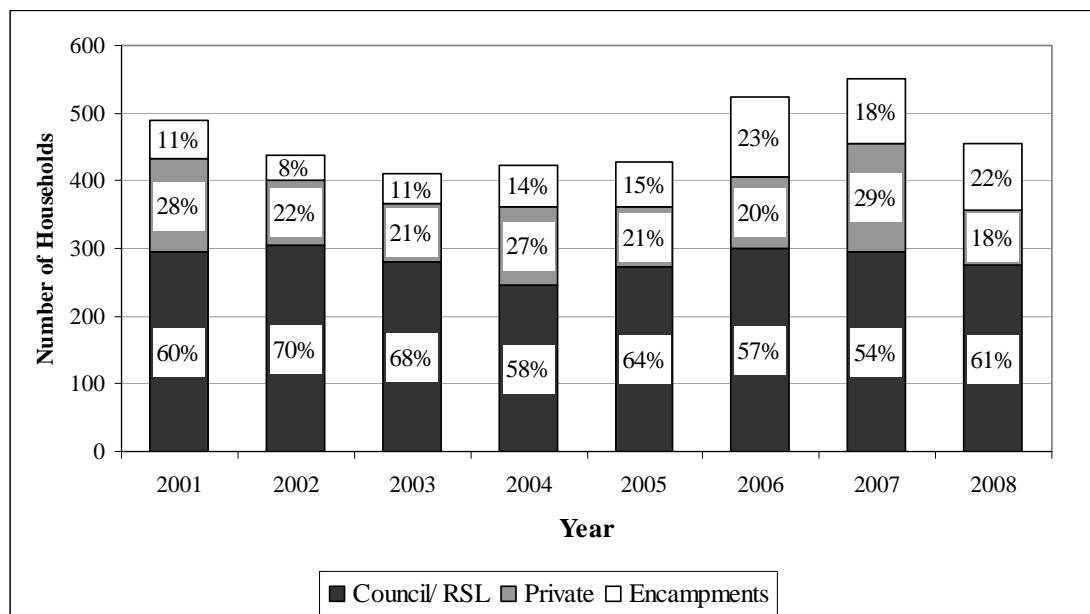


Table 2.1: Gypsies/Travellers Households by Local Authority Area and Type of Site, January 2005 – January 2008

Local Authority	January 2005				January 2006				January 2007				January 2008			
	A	B	C	D	A	B	C	D	A	B	C	D	A	B	C	D
Aberdeen	7	0	0	7	7	0	0	7	11	5	4	20	10	0	20	30
Aberdeenshire	0	0	8	8	0	0	11	11	0	0	0	0	0	0	21	21
Angus	18	16	7	41	18	16	2	36	18	21	23	62	7	0	0	7
Argyll & Bute	12	0	0	12	23	0	0	23	26	0	0	26	16	0	0	16
Clackmannanshire	7	0	0	7	7	0	0	7	5	0	0	5	0	0	0	0
Dumfries & Galloway	9	0	0	9	18	0	3	21	20	0	0	20	20	4	0	24
Dundee	19	0	0	19	17	0	31	48	14	0	0	14	12	0	0	12
East Ayrshire	0	1	5	6	0	1	7	8	0	6	7	13	0	0	2	2
East Dunbartonshire	6	0	0	6	1	0	0	1	2	0	0	2	5	0	0	5
East/Midlothian	12	0	0	12	13	0	18	31	7	0	9	16	12	0	0	12
East Renfrewshire	0	16	0	16	0	16	0	16	0	15	0	15	0	0	0	0
Edinburgh	16	0	8	24	15	0	9	24	16	0	0	16	12	0	0	12
Eilean Siar	0	0	0	0	0	0	0	0	0	0	0	0	0	0	0	0
Falkirk	9	5	0	14	10	0	0	10	13	5	0	18	12	5	0	17
Fife	35	20	23	78	44	20	10	74	45	20	3	68	46	24	6	76
Glasgow	3	0	0	3	2	0	0	2	0	0	0	0	0	0	0	0
Highland	19	0	0	19	19	1	4	24	27	0	16	43	27	0	8	35
Inverclyde	0	0	0	0	0	0	3	3	0	0	0	0	0	0	0	0
Moray	0	0	1	1	0	0	2	2	0	10	0	10	0	0	15	15
North Ayrshire	17	0	0	17	19	0	3	22	0	0	0	0	12	0	0	12
North Lanarkshire	0	0	5	5	0	0	5	5	8	0	19	27	0	0	0	0
Orkney	0	0	0	0	0	0	0	0	0	0	0	0	0	0	0	0
Perth & Kinross	16	0	4	20	16	0	5	21	21	0	5	26	16	25	4	45
Renfrewshire	0	0	0	0	0	0	0	0	0	0	0	0	0	0	0	0
Scottish Borders	0	0	0	0	0	15	0	15	0	10	0	10	0	0	0	0
Shetland	0	0	0	0	0	0	0	0	0	0	0	0	0	0	0	0
South Ayrshire	8	0	0	8	8	0	0	8	8	0	0	8	8	0	8	16
South Lanarkshire	26	32	5	63	26	38	2	66	27	67	2	96	24	23	0	47
Stirling	6	0	0	6	11	0	0	11	5	0	0	5	16	0	0	16
West Dunbartonshire	19	0	0	19	20	0	0	20	21	0	0	21	20	0	5	25
<i>West Lothian*</i>	8	0	0	8	5	0	4	9	1	0	9	10	1	0	9	10
SCOTLAND	272	90	66	428	299	107	119	525	295	159	97	551	276	81	98	455
<i>Categories as % of total</i>	<i>64%</i>	<i>21%</i>	<i>15%</i>	<i>100%</i>	<i>57%</i>	<i>20%</i>	<i>23%</i>	<i>100%</i>	<i>54%</i>	<i>29%</i>	<i>18%</i>	<i>100%</i>	<i>61%</i>	<i>18%</i>	<i>22%</i>	<i>100%</i>
<i>Population</i>	870	288	211	1,370	927	332	369	1,628	885	477	291	1,653	938	275	333	1,547

EXPLANATORY NOTE

A Estimated households on Council/RSL Sites

B Estimated households on Private Sites

*West Lothian figures are as at January 2007

C Estimated households on Unauthorised Encampments

D Total estimated number of Households

2.8 At a local authority area level, the largest Gypsies/Travellers population is to be found in Fife, followed by South Lanarkshire and then Perth and Kinross, with 76, 47 and 45 households respectively. These 3 areas account for 37% of all Gypsies/Travellers households living in Scotland as at January 2008.

2.9 As can be seen from Table 2.2 below, there has been a net decrease of -17% in the number of Gypsies/Travellers households present during the winter count since last year. The largest drop in numbers was in West Central Scotland, where the number of households fell from 187 to 93 (-50%). Similarly, a large fall of -35% occurred in the Lothians/Borders area. In contrast, the number of Gypsies/Travellers households increased in both the Highlands, Islands and Grampian area and the Ayrshire and Dumfries and Galloway area by 38% and 32% respectively.

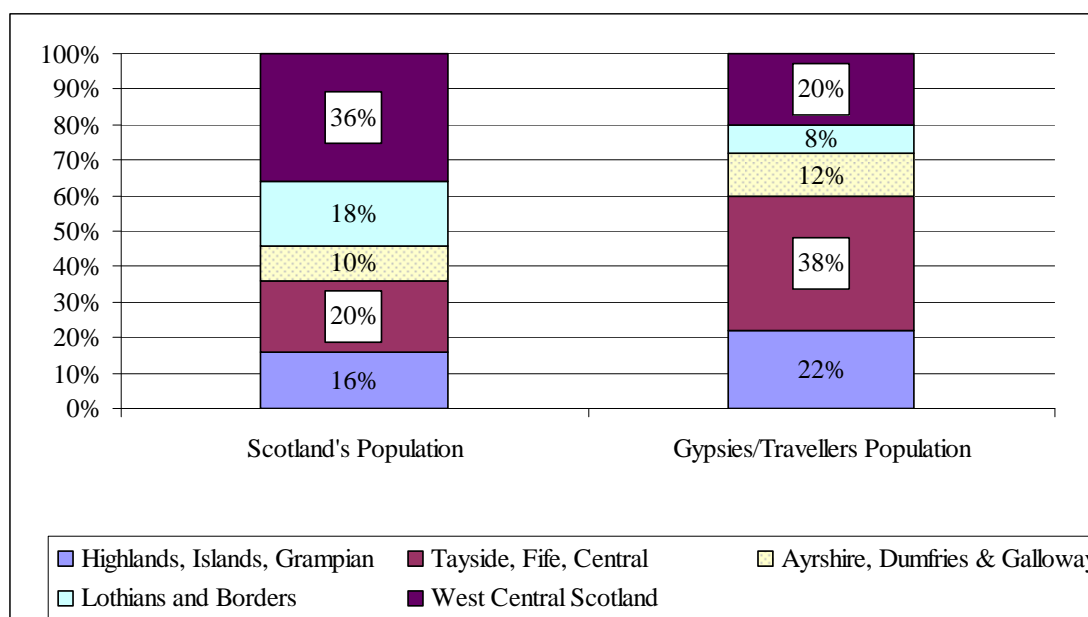
Table 2.2 Change in Winter (January) Households by Region

Region	Number of Households		Change 2007 - 2008	Change 2001 - 2008
	2007	2008		
Highlands, Islands, Grampian	73	101	38%	66%
Tayside, Fife, Central	198	173	-13%	-2%
Ayrshire, Dumfries & Galloway	41	54	32%	32%
Lothians and Borders	52	34	-35%	-36%
West Central Scotland	187	93	-50%	-41%
TOTAL	551	455	-17%	-7%

2.10 Over the longer term, since 2001 the number of Gypsy/Traveller households present across Scotland at the time of the winter count has dropped by 7%. The largest fall has occurred in West Central Scotland, with a 41% drop in the population. Reductions were also seen in Lothians and Borders (-36%) and Tayside, Fife and Central (-2%). However, contrary to the overall trend, the number of households living in Highlands, Islands and Grampian increased by two thirds, while the number of households present in Ayrshire and Dumfries and Galloway has increased by almost a third. The reasons behind these regional changes are ambiguous. Some possible factors affecting movement may include:

- Availability of safe and appropriate places to stop;
- Changes in council provision and differing approaches to management of unauthorised encampments;
- Seasonal work opportunities may be more forthcoming in some localities than others;
- Family and personal reasons, such as disputes, illness and bereavement, education, as well as traditional associations to a particular area.

Figure 2.3: Distribution of All Households and Gypsy/Traveller Households January 2008



2.11 The Gypsies/Travellers population (approximately 1,547 people) makes up about 0.03% of the total Scottish population (approximately 5,116,900 people). Compared to the Scottish population as a whole, the winter population of Gypsies/Travellers is distributed throughout the country in a slightly different way to the rest of the Scottish population. The largest proportion (38% of the total Gypsy/Traveller population) can be found in the Tayside, Fife and Central area and the second highest proportion is present in the Highlands, Islands and Grampians region (22%). The largest proportion (36%) of the wider Scottish population lives in West Central Scotland, with the second highest proportion (20%) to be found in Tayside, Fife and Central Scotland.

2.12 The differences in population and distribution are likely to be accounted for by fewer Council/RSL pitches or opportunities to form encampments in the urban centres of large cities such as Glasgow and Edinburgh. They may also be due to the traditional patterns of travel among Gypsies/Travellers who often choose to return to the same sites year on year. Another factor may be the quality of the relationships between Gypsies/Travellers and the local settled population in different areas.

3. COUNCIL/RSL SITES

Background

3.1 From the late 1970s through to the early 2000s, many of Scotland's local authorities developed purpose-built serviced sites for Gypsies/Travellers with the aid of grant assistance from the (then) Scottish Office. Local authorities also managed these sites.

3.2 A total of 37 facilities were developed over the period (34 year round and 3 seasonal) although 5 of the year round sites have since closed. These sites closed for a variety of reasons, but often had a history of vandalism, low occupancy or association with family feuding/fear of intimidation among Gypsies/Travellers.

3.3 Purpose-built Council/RSL sites are formally laid out with clearly demarcated pitches intended for a single household. Very large households may be allocated two adjacent pitches based on a single tenancy and there may also be instances of more than one household occupying a single pitch and a single tenancy. Overall, such instances tend to be rare. Pitches are usually designed to accommodate a large trailer or static caravan with space for a lorry/van although in some instances a small tourer caravan is also permitted. Each pitch has its own amenity block, which contains facilities such as showers/baths, toilets and domestic appliances, although the type and extent of such facilities tends to vary by site.

3.4 Tenancies of year round sites are unrestricted in length and tenants are permitted leaves of absence for up to 12 weeks for reasons such as work, travelling, visiting relatives or holidaying, while retaining their tenancy.

3.5 The range of data available on Council/RSL sites and those who live on them is much more extensive than in the case of private sites and unauthorised encampments. This data is largely based on site management records and the knowledge of those who manage such sites.

Provision

3.6 There are now 32 Council/RSL sites across Scotland; 29 are year round sites and 3 are seasonal (open summer only). In 2006, the Argyll and Bute local authority area witnessed 3 year round sites transfer ownership to a RSL – Argyll Community Housing Association (ACHA) - as part of a Council housing stock transfer. This means that overall, 29 sites are now owned and managed by Councils and 3 by a RSL.

3.7 The 32 Council/RSL sites have a total capacity of 500 pitches. These 32 sites are not evenly distributed throughout the various councils; of Scotland's 32 local authorities, 24 have such sites while 8 do not. East and Midlothian share a

site and have been counted separately. Aberdeenshire and Scottish Borders only have one seasonal summer site each.

3.8 Since the July 2007 count when there were 508 pitches in total on Council/RSL sites, 9 pitches have been demolished at the Clinterty site in Aberdeen City, while the South Lanarkshire Council site has redefined a pitch as operable. However, this is currently being used as a community facility and is therefore unavailable for residential purposes.

3.9 Four sites were closed at the time of the count, three seasonal and one permanent site (Clackmannanshire) which is currently undergoing refurbishment. The following 8 sites were fully tenanted in January 2008¹:

- St Christopher's, Angus
- Thistlegrove, Dumfries and Galloway
- Heatherswood, Fife
- Tarvit Mill, Fife
- Thornton Wood, Fife
- Houdston, South Ayrshire
- Springbank, South Lanarkshire
- Dennystoun Forge, West Dunbartonshire.

3.10 The following 12 sites had 75% or more of pitches let²:

- Clinterty, Aberdeen City
- Duncholgan, Argyll and Bute
- Ledaig, Argyll and Bute
- Balmuir Wood, Dundee City
- North Cairntow, City of Edinburgh
- Redding, Falkirk
- Aonachan, Highland
- Longman, Highland
- Redburn, North Ayrshire
- Double Dykes, Perth and Kinross
- Swinhill, South Lanarkshire
- Bridgend, Stirling.

3.11 The Council site in Glasgow is now completely unoccupied, having had one tenant over the summer 2007 period. The site in North Lanarkshire is also unoccupied.

3.12 Overall occupancy patterns in January 2008 were as follows:

- Of the 500 pitches on 32 sites, 321 pitches (64% of the total) were tenanted;

¹ See Appendix, Table 1

² See Appendix, Table 1

- 276 pitches (55%) were let and occupied at the time of the count;
- 45 pitches (9%) were let but with tenants on permitted leave of absence;
- 70 pitches (14%) were available for let but untenanted;
- 109 pitches (22%) were unavailable for let.

3.13 A breakdown of pitch provision and occupancy on Council/RSL sites by local authority area is shown in Table 3.1. A more detailed version can be found in Table 1 of the Appendix.

**Table 3.1: Pitch Provision and Occupancy Profile by Local Authority
January 2008**

Local Authority Area	Number of Sites	Total Number of Pitches	% Tenanted	% Available for let	% Not available for Let
Aberdeen City	1	21	76%	5%	19%
Aberdeenshire	1	20	0%	0%	100%
Angus	1	18	100%	0%	0%
Argyll & Bute	3	32	72%	19%	9%
Clackmannanshire	1	16	0%	0%	100%
Dumfries & Galloway	2	32	69%	31%	0%
Dundee City	1	20	80%	0%	20%
East Ayrshire	0	0	0	0	0
East Dunbartonshire	1	15	33%	47%	20%
East Renfrewshire	0	0	0	0	0
East/Midlothian	1	20	65%	35%	0%
Edinburgh, City of	1	20	75%	15%	10%
Eilean Siar	0	0	0	0	0
Falkirk	1	15	80%	7%	13%
Fife	3	50	100%	0%	0%
Glasgow City	1	10	0%	100%	0%
Highland	4	54	61%	6%	33%
Inverclyde	0	0	0	0	0
Moray	0	0	0	0	0
North Ayrshire	1	16	75%	0%	25%
North Lanarkshire	1	16	0%	0%	100%
Orkney	0	0	0	0	0
Perth And Kinross	1	20	80%	0%	20%
Renfrewshire	0	0	0	0	0
Scottish Borders	1	10	0%	0%	100%
Shetland	0	0	0	0	0
South Ayrshire	1	8	100%	0%	0%
South Lanarkshire	2	28	89%	0%	11%
Stirling	1	18	89%	11%	0%
West Dunbartonshire	1	20	100%	0%	0%
<i>West Lothian*</i>	<i>1</i>	<i>21</i>	<i>5%</i>	<i>95%</i>	<i>0%</i>
SCOTLAND	32	500	64%	14%	22%

Note: East Lothian and Midlothian Councils submit a joint return for the purposes of the Count.

* Projected figures based on last year's returns.

3.14 For the January 2008 count, new questions regarding the unavailability of pitches were introduced to establish the reasons why some pitches were not available to let. Of the total number of local authority pitches in Scotland, 109 (approx 22%) were unavailable for use, an increase on 63 last January. The breakdown of the reasons why pitches were unavailable can be seen in Table 3.2, with most being seasonal pitches, unfit for use or under refurbishment at the time of the count.

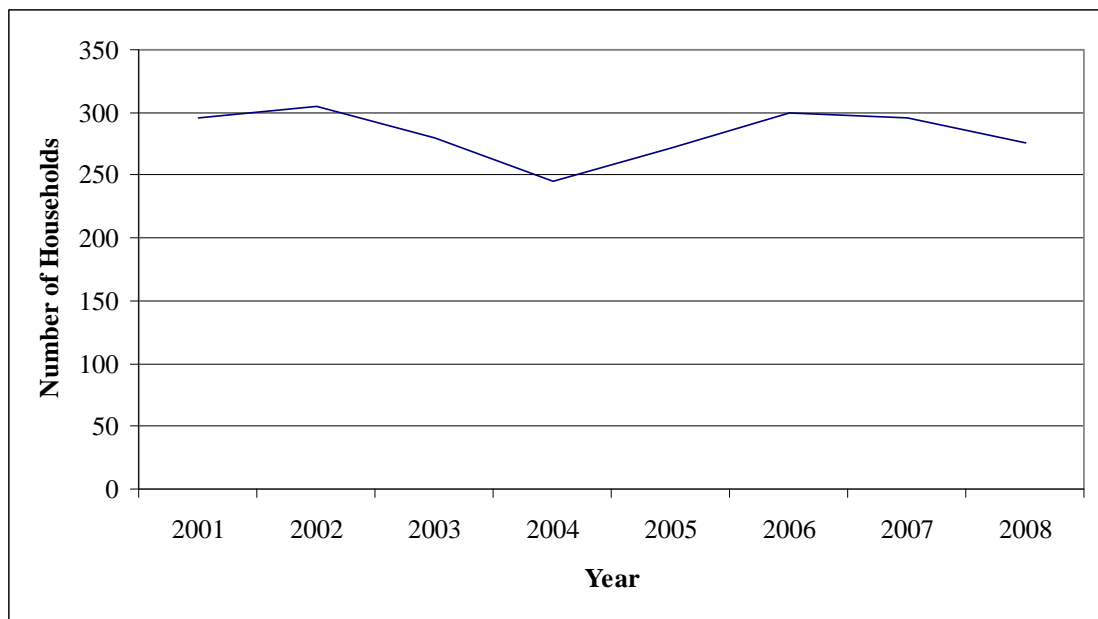
Table 3.2 Unavailable Pitches

Reason	Number	%
Seasonal	37	34%
Unfit for use	30	28%
Under refurbishment	27	25%
Held for decant purposes	10	9%
Held for community use	2	2%
Other	3	3%
Total	109	

Population

3.15 Of the 321 tenanted pitches, 276 (86%) were let and occupied on the day of the count. This is 13 fewer pitches than in January 2007, in part reflecting that a higher proportion of households were temporarily absent from their site on the count day in January 2008. There has been little change in the number of households recorded on such sites since 2001 as shown in Figure 3.1.

Figure 3.1: Number of Households on Council/RSL Sites (Winter) January 2001 to January 2008



3.16 The population of 932 Gypsies/Travellers on Council/RSL sites counted as present on the day were spread across 276 pitches. As seen in Table 3.3 below, 47% were male and 53% female. This is similar to the wider Scottish gender profile where females outnumber males.

3.17 Average household size was 3.4 persons, which compares with only 2.2 persons in the wider population (see Table 3.3 below). However, household size varied considerably by site and ranged from less than 2 individuals to over 6 individuals.

3.18 As much as 49% of the population on Council/RSL sites was under 19 years of age, compared to only 23% in the wider Scottish population. The proportion of under 5s and 5-11s is particularly high, standing at 14% and 18% respectively, compared with the Scottish averages of 5% and 8%. The difference is less marked in the case of the 12-15 age group, although there is still a higher than average number of this age group living on Council and RSL sites.

3.19 The percentage of the Council/RSL based Gypsies/Travellers population aged 60 and over is significantly lower than the Scottish average, sitting at just 7% compared to the national average of 22%. It is not clear whether this age group is choosing to live away from Council/RSL run sites or whether there is a limited longevity for Gypsies/Travellers as a whole.

3.20 Table 3.3 gives a comparison of some key demographic characteristics for the Council/RSL site based Gypsies/Travellers population and the wider Scottish population.

**Table 3.3: Demographic Comparison
Gypsies/Travellers on Council/RSL Sites/Scotland as a Whole**

	Gypsies/Travellers		Scotland
	Number	%	%
GENDER			
Male	439	47%	48%
Female	493	53%	52%
AGE STRUCTURE			
Under 5 years	134	14%	5%
5 - 11 years	167	18%	8%
12 - 15 years	78	8%	5%
16 to 19 years	82	9%	5%
20 to 59 years	402	43%	55%
60 plus years	69	7%	22%
POPULATION BASE	932		5,116,900
AVERAGE HOUSEHOLD SIZE			
	3.4		2.2

Source: Twice Yearly Count January 2008; General Register Office 2006 Mid Year Estimate and 2006 Household Estimates

Note: This does not include January 2007 figures from West Lothian due to revisions in the age structure in the count form for the January 2008 count.

Change, Movement and Demand

3.21 The level of tenancy change on Council/RSL sites is currently running at 14% for the six-month period (see Appendix, Table 3). Not all tenancy changes are as a result of pitch turnover/households moving; such changes can sometimes involve a change from a single to a joint tenancy, for example, transferring between a mother to mother and daughter. Tenancy change across Scotland would now appear to be predominantly associated with the refurbishment of Council/RSL sites, movement between Council/RSL sites and movement on and off seasonal sites.

3.22 Due to these factors, it is difficult to establish the current extent of travelling among Gypsies/Travellers from the data, although recent research has shown this is much reduced compared to the past³. While only 45 tenants (14%) were away at the time of the January 2008 Count, around 87 or 27% had been away from their pitch in the 6 months previously⁴. It is known that in some

³ An Assessment of the Housing Needs and Aspirations of Gypsies/Travellers in Tayside, Heriot-Watt University, Communities Scotland, 2004; An Accommodation Needs Assessment of Gypsies/Travellers in West Central Scotland, Craigforth, 2007.

⁴ See Appendix, Table 3

cases such absences are as a result of ongoing site refurbishment e.g. at Clackmannanshire.

3.23 This year's data would suggest that tenants in Aberdeen City and City of Edinburgh are more likely to travel than tenants in other areas. In these cases, over half of tenants had had permitted leaves of absence over the previous 6 months.

3.24 Data on length of stay on Council/RSL sites has only recently been introduced to the count, therefore a time series is not yet available. Again, evidence from research and anecdotal evidence from site managers suggests that in some cases Gypsies/Travellers have become quite settled on some of these sites. 37% of Gypsies/Travellers based on Council/RSL sites had been there for less than a year. Of the remainder, the length of tenancy profile was almost split equally between those who had held tenancies between 1 and 5 years (31%) and for over 5 years (32%).

3.25 In the case of sites in Angus, South Ayrshire and West Dunbartonshire over 75% of tenants have been there for more than 5 years, making these the most settled sites of all. Other areas where more than a third of tenancies have lasted for longer than 5 years are Argyll and Bute, Edinburgh, Fife, Perth and Kinross and South Lanarkshire.

**Table 3.4: Length of Tenancy Profile by Local Authority Area
January 2008**

Local Authority Area	Total Tenancies	Under 1 year	1 year to 5 years	5 years and above
Aberdeen City	16	63%	25%	13%
Aberdeenshire	0	0	0	0
Angus Council	18	0%	11%	89%
Argyll & Bute	23	17%	43%	39%
Clackmannanshire	0	0	0	0
Dumfries & Galloway	22	55%	41%	5%
Dundee City Council	16	44%	44%	13%
East Dunbartonshire	5	60%	40%	0%
East/Midlothian	13	46%	31%	23%
Edinburgh, City of	15	40%	27%	33%
Falkirk	12	58%	42%	0%
Fife	50	22%	42%	36%
Glasgow City	0	0	0	0
Highland	33	45%	52%	3%
North Ayrshire	12	83%	0%	17%
North Lanarkshire	0	0	0	0
Perth And Kinross	16	0%	31%	69%
Scottish Borders	0	0	0	0
South Ayrshire	8	0%	25%	75%
South Lanarkshire	25	28%	24%	48%
Stirling	16	100%	0%	0%
West Dunbartonshire	20	10%	10%	80%
<i>West Lothian*</i>	<i>1</i>	<i>0%</i>	<i>100%</i>	<i>0%</i>
SCOTLAND	321	37%	31%	32%

Note: East Lothian and Midlothian Councils submit a joint return for the purposes of the Count.

* *Projected figures based on last year's returns.*

3.26 The most reliable indicators of demand for pitches are derived from waiting lists and numbers of families turned away. There are currently 113 households recorded on waiting lists for Council/RSL sites, which represents 29% of current pitch provision (see Appendix, Table 4). However as some households may be registered on more than one list there will be some degree of overlap.

3.27 Waiting list demand tends to cluster around popular areas such as West Dunbartonshire, Angus and South Ayrshire; there is also demand for sites in South Lanarkshire, Fife and Dundee. However, there are some pitfalls to be aware of in interpreting data from these sources. Where a site is full with long-

term tenants the waiting list may be small since non-resident Gypsies/Travellers might not even attempt to access a pitch.

3.28 A total of 56 households were turned away from various Council/RSL sites within the last 6 months (see Appendix, Table 4). As this is likely to include those who have been turned away from more than one site during this period there will again be an element of overlap.

3.29 Significant numbers of Gypsies/Travellers have been turned away from sites in Fife, Highland and Dumfries and Galloway.

4. PRIVATE SITES

Background

4.1 Privately owned sites are used by Gypsies/Travellers who either do not want to access Council/RSL sites, or are unable to do so. They include year round sites and those used only on a seasonal basis.

4.2 Year round sites are often established by Gypsies/Travellers themselves and usually cater for specific families or extended families. This tends to mean they accommodate groups of people from largely the same ethnicity (for example. Romanies, Scottish Travellers etc).

4.3 Private seasonal sites can either be specifically for Gypsies/Travellers (often provided and/or managed by Gypsies/Travellers) or commercial holiday/touring sites known to accept Gypsies/Travellers. Such sites are largely used on a transit basis by Gypsies/Travellers travelling through or visiting an area. All but one of the private seasonal sites recorded by the count operates in the summer months only, although the length of the operating summer season has been known to vary.

4.4 Owners of private sites are under no obligation to take part in the Twice Yearly Count. Owners of holiday/touring sites can be reluctant to disclose that they accept Gypsies/Travellers, while sites established by Gypsies/Travellers themselves tend to value their privacy. Accurate data on the number of households living on private sites and details of the sites themselves can therefore be difficult to obtain. The information gathered for the count is based on the best local intelligence held among local authority officers working most closely with Gypsies/Travellers.

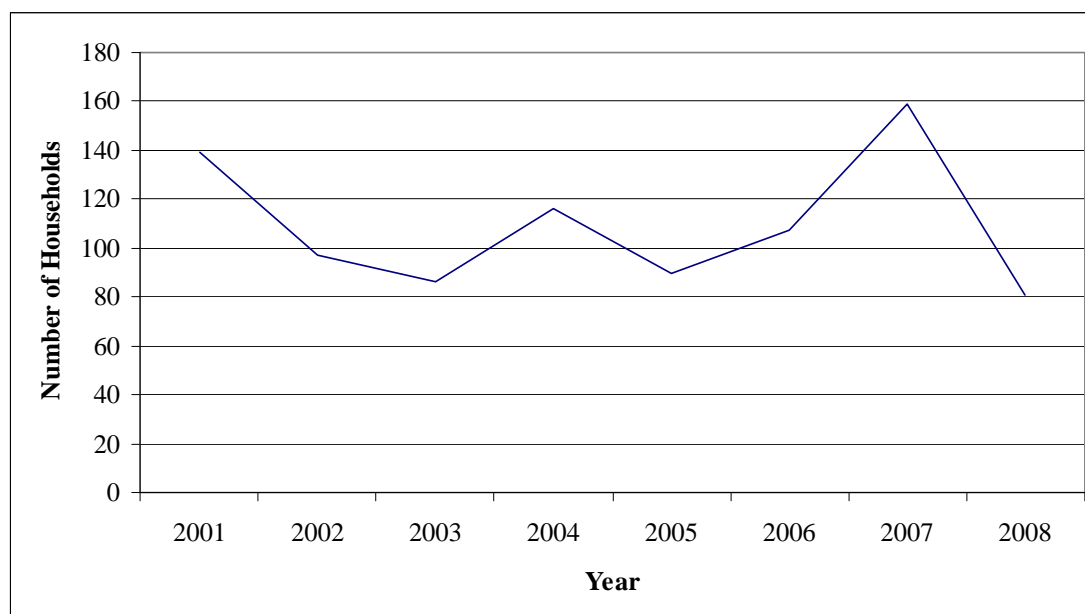
4.5 In the case of private sites, estimates of the number of households for count purposes are based on the assumption that one caravan is equivalent to one household. While experience from Council/RSL sites suggests this will not be strictly true in all cases, it will be in the vast majority. It is therefore a useful general rule to apply when estimating the total Gypsies/Travellers population.

Population, Households and Provision

4.6 Information on private sites is less exact than information available from Council/RSL sources. Population numbers are estimated through applying the household size derived from Council/RSL tenants to these households. The number of households is taken as being the same as the number of pitches/trailers. In January 2008, there were 81 Gypsies/Travellers households on private sites accounting for 18% of all households recorded nationally. This is significantly fewer than the 159 households recorded on private sites in January 2007, which accounted for 29% of all Gypsies/Travellers households.

4.7 The trend in number of households living on private sites in winter months from 2001 onwards is shown in Figure 4.1.

**Figure 4.1: Number of Households on Private Sites (Winter)
January 2001 to January 2008**



4.8 Historically, Moray has accounted for many of the households living on private sites included in previous counts. While it has reported two sites in use near Findhorn, it had no figures for these, and 10 households noted last January are now absent. For the purposes of the count, it has been assumed no Gypsies/Travellers were present to avoid double counting.

4.9 Reasons for the drop in the number of private sites vary. One of the most likely factors affecting the figures is that the gathering of data – or rather, availability thereof – from private facilities can be very inconsistent. In some counts data is not available for either a holiday site or location operated by Gypsies/Travellers themselves, in others, a commercial site will suddenly stop providing pitches to Gypsies/Travellers for a period of time. Information from sites operated by Gypsies/Travellers can also be sparse, with changes in occupancy not noted or fully quantified.

4.10 As can be seen in Table 4.1, in Perth and Kinross 25 families are known to be living on private sites representing around 31% of the total households based in this type of accommodation⁵. Fife reported a similar proportion, with 24 households (30%) living on long stay sites. South Lanarkshire, which previously had 67 families living on private sites, has 23 present.

4.11 The great majority (90%) of those living on private sites had been doing so on a long stay basis (stays of over 4 weeks) while a minority (10%) were there on a

⁵ Further details on these figures are available in the January 2008 Appendix.

short stay basis. A detailed breakdown of the distribution of those living on private sites by local authority area is in Table 4.1.

Table 4.1: Households Living on Private Sites by Local Authority Area January 2008

Local Authority Area	2007		2008	
	Short Stay	Long Stay	Short Stay	Long Stay
Aberdeen City	0	5	0	0
Aberdeenshire	-	-	0	0
Angus	0	21	-	-
Dumfries & Galloway	0	0	0	4
East Ayrshire	6	0	0	0
East Renfrewshire*	0	15	*	*
Falkirk	0	5	0	5
Fife	0	20	0	24
Highland	0	0	0	0
Moray	0	10	/	/
Perth And Kinross	0	0	0	25
Scottish Borders	0	10	0	0
South Lanarkshire	12	55	8	15
SCOTLAND	18	141	8	73
	159		81	

*The East Renfrewshire site has been removed as this site is actually for Show Travellers who are not included in the count.

0 indicates were a LA has reported a site but no travellers were present at the time of the count, - indicates that no site was reported.

4.12 In January 2008 19 private sites across 11 local authorities were reported. Of these, 11 sites in 5 local authorities were in use at the time of the count.

4.13 Since 2001 the actual number of private sites recorded by the count has fluctuated at around 20 sites, while the number of households has been subject to much more substantial changes, 44 having been lost in South Lanarkshire alone. In January 2007, there were 18 sites reported but 159 households, almost double the number of households recorded this year.

4.14 While it would appear that a number of those households reported in areas such as South Lanarkshire and the Scottish Borders have disappeared, reporting on private sites tends to be inconsistent and information is often patchy or unavailable. This means that the number of households living on private sites may be more stable than first appears.

4.15 All year round sites accounted for the majority of private sites in use at the time of the count. Gypsies/Travellers sites tend to be long stay rather than short stay sites and more than half were in continuous use (see Appendix, Table 6). The distribution of year round and seasonal sites is shown in Table 4.2.

Table 4.2: Private Sites at January 2008

Local Authority Area	Number of Sites			
	All Year	Seasonal		TOTAL
		Summer Only	Winter Only	
Aberdeen City	1	0	0	1
Aberdeenshire	0	2	0	2
Dumfries & Galloway	2	0	0	2
East Ayrshire	1	0	0	1
Falkirk	2	0	0	2
Fife	2	0	0	2
Highland	0	1	0	1
Moray	2	0	0	2
Perth And Kinross	3	0	0	3
Scottish Borders	1	0	0	1
South Lanarkshire	2	0	0	2
SCOTLAND	16	3	0	19

5. UNAUTHORISED ENCAMPMENTS

Background

5.1 Unauthorised encampments are set up on a short-term basis by Gypsies/Travellers when travelling through or visiting an area. They can also arise when families are having difficulty finding somewhere to settle in an area, for example, on a Council/RSL or private site. In many areas, such encampments are the only option available (where no available sites/pitches exist or where they are refused entry to private/holiday sites); for other Gypsies/Travellers they are the only option they will consider as part of their way of life.

5.2 Gypsies/Travellers based in Scotland and seasonal incomers from England, Ireland and Wales traditionally move around mostly during the summer months. While unauthorised encampments tend to spring up more frequently in summer than in winter, the number of them in Scotland has until this year, been increasing significantly in both seasons, particularly during the last 3-4 years. There are areas of Scotland where unauthorised encampments are reported right through the winter.

5.3 Locations used include wasteland, industrial sites, open space areas, lay-bys, car parks and more secluded spots away from settled populations such as loch shores, river banks, remote glens and grazing pastures. Some of these are long-established 'stopping places' used by Gypsies/Travellers for decades and traditionally recognised as such, although locations of this type seem to be increasingly a thing of the past. Families often follow an annual pattern of favoured locations, stopping periodically before moving on of their own accord or as a result of a court order being raised by the landowner.

5.4 As in the case of private sites, accurate data on unauthorised encampments is difficult to obtain and varies from authority to authority. For the purposes of the count, estimates are based on a count of caravans on known sites within an area. Again, estimates of the number of households are based on the assumption that one caravan is the equivalent of one household.

5.5 Encampments can be difficult to find and are not always known to the local authority officers, as Gypsies/Travellers often set up encampments in remote locations. Other agencies such as the Police are a valuable source of information on encampment activity.

5.6 In a change from previous counts, councils were asked to conduct a count of the total number of vans sighted within the area in the six months leading up to the day of the count.

5.7 These changes were introduced because, increasingly in the case of Council/RSL and private sites, the 'snapshot' nature of the count meant it might not accurately represent the typical level of activity in a local area. It was understood that not all

councils keep regular records on encampment activity, but it is hoped that by including it in the counts, authorities will subsequently be encouraged to take up the practice.

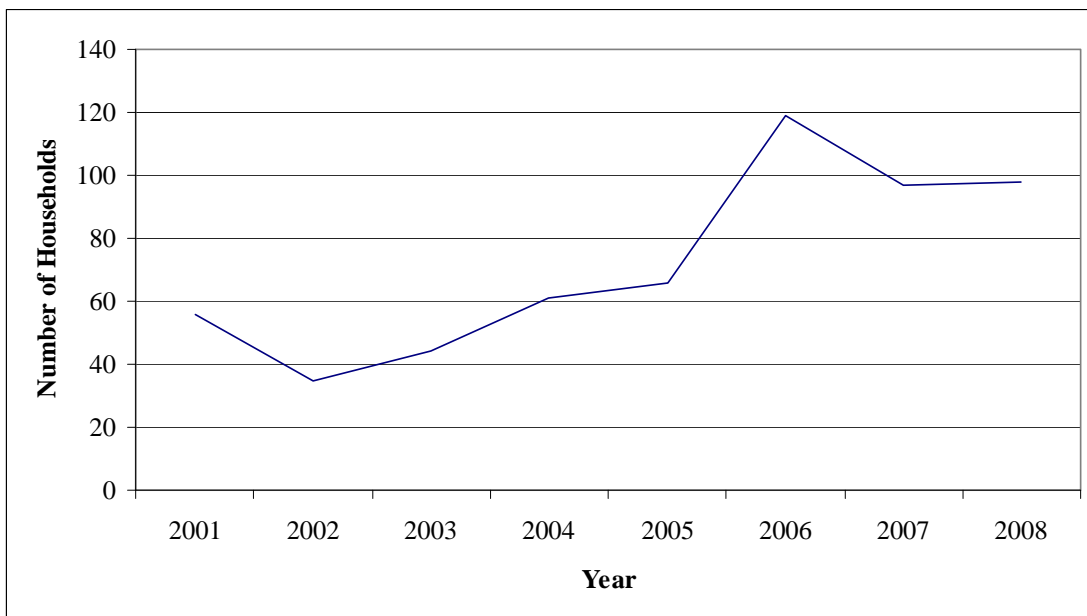
Households and Encampment Activity

5.8 In January 2008 there were 98 households living in unauthorised encampments, representing 22% of the total number of Gypsies/Travellers households identified. This is just slightly higher than the 97 households reported in January 2007.

5.9 From 2001 through to 2004, the number of encampments remained relatively stable but recent years have seen significant increases. While the number of households based on Council/RSL and private sites has remained relatively stable during the winter months (with this year being the exception), the increase in the total number of Gypsy/Traveller households between January 2005 and January 2008 was accounted for by those living on encampments.

5.10 The year on year trend in the number of Gypsies/Travellers living on unauthorised encampments from 2001 onwards is shown in Figure 5.1.

Figure 5.1: Number of Households on Unauthorised Encampments (Winter) January 2001 to January 2008



5.11 On the day of the count, 10 out of 32 local authorities reported unauthorised encampments by Gypsies/Travellers on 20 separate locations, assuming that the figures for West Lothian are the same as in January 2007. Collectively, these locations alone had been used over 50 times in the past 6 months by 224 caravans, as indicated in Table 7 of the appendix.

5.12 As shown in Table 5.1, the encampments with the highest number of households on the day of the count were to be found in Aberdeen (20 caravans) and Aberdeenshire (21). These 2 authorities accounted for 42% of unauthorised encampments reported on the day of the count. Neighbouring Moray had 15% of the total number of households living on encampments.

Table 5.1: Number of Households on Unauthorised Encampments (Winter) January 2004 to January 2008

Local Authority Area	2005	2006	2007	2008
Aberdeen	0	0	4	20
Aberdeenshire	8	11	0	21
Angus	7	2	23	0
Argyll & Bute	0	0	0	0
Clackmannanshire	0	0	0	0
Dumfries & Galloway	0	3	0	0
Dundee	0	31	0	0
East Ayrshire	5	7	7	2
East Dunbartonshire	0	0	0	0
East/ Midlothian	0	18	9	0
East Renfrewshire	0	0	0	0
Edinburgh	8	9	0	0
Eilean Siar	0	0	0	0
Falkirk	0	0	0	0
Fife	23	10	3	6
Glasgow	0	0	0	0
Highland	0	4	16	8
Inverclyde	0	3	0	0
Moray	1	2	0	15
North Ayrshire	0	3	0	0
North Lanarkshire	5	5	19	0
Orkney	0	0	0	0
Perth & Kinross	4	5	5	4
Renfrewshire	0	0	0	0
Scottish Borders	0	0	0	0
Shetland	0	0	0	0
South Ayrshire	0	0	0	8
South Lanarkshire	5	2	2	0
Stirling	0	0	0	0
West Dunbartonshire	0	0	0	5
<i>West Lothian*</i>	<i>0</i>	<i>4</i>	<i>9</i>	<i>9</i>
TOTAL	66	119	97	98

** Projected figures based on last year's returns.*

Note: East Lothian and Midlothian Councils submit a joint return for the purposes of the Count. The encampments occupied at the time of the January 2007 Count were in Midlothian.

5.13 Length of occupancy on encampments at the time of the count was variable although there was a tendency towards longer-term stays; on 95% of sites Gypsies/Travellers had been there for more than a week (see Table 7 of the appendix). Seven encampments were occupied for one or two weeks and longer-term occupations accounted for 10 locations (the length of stay for 2 locations was unknown).

5.14 For the first time, the Twice Yearly Count also asked for information on encampments throughout the 6-month period. Local authorities identified 170 locations in use by Gypsies/Travellers occupied by an average of 5.1 caravans. Overall, local authorities counted 1,400 caravans using unauthorised locations over the period, as shown in Table 8 of the Appendix.

5.15 Over this longer time period the local authority areas recording the highest number of visits were, in order, Highland (36), Moray (31), Fife (25) East/Midlothian (22) and North Ayrshire (21).

5.16 Table 5.2 provides a breakdown by local authority area of the estimated average number of caravans visiting unauthorised encampments recorded in the six months leading up to January 2008.

5.17 As can be seen from Table 5.2, the size of unauthorised encampments often varies greatly. Some authorities are visited frequently and by few (for example, Highland), while others witness on average much more substantial encampments less frequently (for example North Lanarkshire). There are also local authorities such as East and Midlothian and Aberdeen that experience frequent visits in relatively large numbers.

Table 5.2: Visits to Known Encampment Locations August 2007-January 2008, by Local Authority Area

Local Authority	Number of visits	Average Number of Caravans
Aberdeen City	17	9.8
Aberdeenshire	5	7.0
Angus	4	5.5
Argyll & Bute	0	0
Clackmannanshire	4	9.5
Dumfries & Galloway	11	5.3
Dundee City	10	0.0
East/ Midlothian	22	8.9
East Ayrshire	1	2.0
East Dunbartonshire	0	0
East Renfrewshire	0	0
Eilean Siar	0	0
Edinburgh, City of	6	6.2
Falkirk	3	11.3
Fife	25	5.6
Glasgow City	0	0.0
Highland	36	1.5
Inverclyde	3	5.3
Moray	31	2.5
North Ayrshire	21	5.8
North Lanarkshire	9	15.1
Orkney	1	3.0
Perth & Kinross	16	2.4
Renfrewshire	5	4.8
Scottish Borders	0	0.0
Shetland	0	0
South Ayrshire	15	3.9
South Lanarkshire	4	2.3
Stirling	12	4.0
West Dunbartonshire	13	6.5
<i>West Lothian*</i>	/	/
SCOTLAND	274	5.1

/ Figures for West Lothian cannot be produced for this table as data is taken from a new question introduced in the January 2008 count.

6. APPENDIX

Index of Tables

Table 1: Council/RSL Sites: Pitch Occupancy by Site.....	32
Table 2: Council/RSL Sites: Length of Tenancy Profile by Local Authority Area January 2008	33
Table 3: Council/RSL Sites: Movement Away From Sites by Local Authority Area January 2008.....	34
Table 4: Council/RSL Sites: Tenancy Change and Demand by Local Authority Area January 2008.....	35
Table 5: Council/RSL Sites: Age Structure Profile by Site	36
Table 6: Private Sites: Availability and Usage	37
Table 7: Characteristics of Unauthorised Encampments Occupied.....	38
Table 8: Use of Unauthorised Encampments in Last 6 months	39
Table 9: Gypsies/Travellers Households by Local Authority Area and Type of Site January 2008.....	40

**Table 1: Council/RSL Sites: Pitch Occupancy by Site
January 2008**

Local Authority	Site	Total Number of Pitches	Total Let	Let and Occupied	Let and tenant temporarily absent	Available for Let	Not Available
ALL YEAR							
Aberdeen City	Clinterty Caravan Park	21	76%	48%	29%	5%	19%
Angus	St Christopher's	18	100%	94%	6%	0%	0%
Argyll & Bute	Duncholgan	14	86%	64%	21%	0%	14%
Argyll & Bute	Ledaig	8	75%	75%	0%	25%	0%
Argyll & Bute	Torlochran	10	50%	20%	30%	40%	10%
Clackmannanshire	Westhaugh	16	0%	0%	0%	0%	100%
Dumfries & Galloway	Barlockhart	14	29%	29%	0%	71%	0%
Dumfries & Galloway	Thistlegrove	18	100%	89%	11%	0%	0%
Dundee City	Balmuir Wood Travellers Site	20	80%	60%	20%	0%	20%
East Dunbartonshire	Redhills Travellers Site	15	33%	33%	0%	47%	20%
East/Midlothian	Old Dalkeith Colliery	20	65%	60%	5%	35%	0%
Edinburgh, City of	North Cairntow	20	75%	60%	15%	15%	10%
Falkirk	Redding Travellers Site	15	80%	80%	0%	7%	13%
Fife	Heatherywood	18	100%	72%	28%	0%	0%
Fife	Tarvit Mill	20	100%	100%	0%	0%	0%
Fife	Thornton Wood	12	100%	83%	17%	0%	0%
Glasgow City	Oakbank Wharf	10	0%	0%	0%	100%	0%
Highland	Aonachan G.T.S	15	93%	53%	40%	0%	7%
Highland	Kentallen G.T.S	12	33%	17%	17%	25%	42%
Highland	Longman Road GTS	20	75%	55%	20%	0%	25%
North Ayrshire	Redburn Site	16	75%	75%	0%	0%	25%
North Lanarkshire	Forrest Street	16	0%	0%	0%	0%	100%
Perth And Kinross	Double Dykes	20	80%	80%	0%	0%	20%
South Ayrshire	Houdston	8	100%	88%	13%	0%	0%
South Lanarkshire	Springbank	6	100%	83%	17%	0%	0%
South Lanarkshire	Swinhill Travelling Persons Site	22	86%	86%	0%	0%	14%
Stirling	Bridgend Park	18	89%	89%	0%	11%	0%
West Dunbartonshire	Dennistoun Forge	20	100%	100%	0%	0%	0%
West Lothian*	Sibbalds Brae	21	5%	5%	0%	95%	0%
Seasonal							
Aberdeenshire	Greenbanks	20	0%	0%	0%	0%	100%
Highland	Newtonmore G.T.S	7	0%	0%	0%	0%	100%
Scottish Borders	Tweedside Caravan Park	10	0%	0%	0%	0%	100%
SCOTLAND		500	64%	55%	9%	14%	22%

* Figures based on January 2007 Return

**Table 2: Council/RSL Sites: Length of Tenancy Profile by Local Authority Area
January 2008**

Local Authority	Total Tenancies	0-3 months	3 to 6 months	6 to 12 months	1 to 2 years	2 to 5 years	5 to 10 years	10+ years
Aberdeen City	16	0%	50%	13%	0%	25%	13%	0%
Aberdeenshire	0	0%	0%	0%	0%	0%	0%	0%
Angus	18	0%	0%	0%	0%	11%	22%	67%
Argyll & Bute	23	9%	0%	9%	17%	26%	26%	13%
Clackmannanshire	0	0%	0%	0%	0%	0%	0%	0%
Dumfries & Galloway	22	9%	32%	14%	0%	41%	5%	0%
Dundee City	16	6%	13%	25%	38%	6%	6%	6%
East Dunbartonshire	5	0%	0%	60%	20%	20%	0%	0%
East/Midlothian	13	46%	0%	0%	8%	23%	0%	23%
Edinburgh, City of	15	13%	20%	7%	7%	20%	7%	27%
Falkirk	12	17%	17%	25%	33%	8%	0%	0%
Fife	50	14%	8%	6%	16%	18%	12%	24%
Glasgow City	0	0%	0%	0%	0%	0%	0%	0%
Highland	33	6%	3%	36%	15%	36%	3%	0%
North Ayrshire	12	42%	25%	17%	0%	0%	0%	17%
North Lanarkshire	0	0%	0%	0%	0%	0%	0%	0%
Perth And Kinross	16	0%	0%	0%	0%	31%	31%	38%
Scottish Borders	0	0%	0%	0%	0%	0%	0%	0%
South Ayrshire	8	0%	0%	0%	25%	0%	75%	0%
South Lanarkshire	25	4%	12%	12%	8%	16%	40%	8%
Stirling	16	31%	69%	0%	0%	0%	0%	0%
West Dunbartonshire	20	5%	5%	0%	0%	10%	45%	35%
<i>West Lothian*</i>	<i>1</i>	<i>0%</i>	<i>0%</i>	<i>0%</i>	<i>100%</i>	<i>0%</i>	<i>0%</i>	<i>0%</i>
SCOTLAND	321	11%	14%	12%	9%	22%	17%	15%

* Projected figures based on last year's returns.

**Table 3: Council/RSL Sites: Movement Away From Sites by Local Authority Area
January 2008**

Local Authority	Total Let Pitches	Let with tenant absent	Tenants away for permitted periods
Aberdeen City	16	38%	56%
Aberdeenshire	0	0	0
Angus	18	6%	6%
Argyll & Bute	23	26%	22%
Clackmannanshire	0	0	0
Dumfries & Galloway	22	9%	14%
Dundee City	16	25%	25%
East Dunbartonshire	5	0%	20%
East/Midlothian	13	8%	15%
Edinburgh City	15	20%	67%
Falkirk	12	0%	8%
Fife	50	14%	26%
Glasgow City	0	0	0
Highland	33	36%	24%
North Ayrshire	12	0%	42%
North Lanarkshire	0	0	0
Perth And Kinross	16	0%	44%
Scottish Borders	0	0	0
South Ayrshire	8	13%	50%
South Lanarkshire	25	4%	36%
Stirling	16	0%	19%
West Dunbartonshire	20	0%	0%
<i>West Lothian*</i>	<i>1</i>	<i>0%</i>	<i>100%</i>
SCOTLAND	321	14%	27%

* Projected figures based on last year's returns.

**Table 4: Council/RSL Sites: Tenancy Change and Demand by Local Authority Area
January 2008**

Local Authority	Usable Pitches	Tenancy Changes (past 6 months)		Waiting List		Number Turned Away	
	Number	Number	%	Number	%	Number	%
Aberdeen City	17	0	0%	0	0%	0	0%
Aberdeenshire	0	0	0%	0	0%	0	0%
Angus	18	0	0%	12	67%	3	17%
Argyll & Bute	29	2	7%	5	17%	3	10%
Clackmannanshire	0	0	0%	0	0%	0	0%
Dumfries & Galloway	32	4	13%	4	13%	10	31%
Dundee City	16	4	25%	5	31%	5	31%
East Dunbartonshire	12	0	0%	0	0%	0	0%
East/Midlothian	20	6	30%	0	0%	0	0%
Edinburgh, City of	18	4	22%	5	28%	0	0%
Falkirk	13	4	31%	2	15%	0	0%
Fife	50	7	14%	21	42%	15	30%
Glasgow	10	0	0%	0	0%	0	0%
Highland	36	3	8%	8	22%	9	25%
North Ayrshire	12	8	67%	0	0%	5	42%
North Lanarkshire	0	0	0%	0	0%	0	0%
Perth And Kinross	16	0	0%	0	0%	0	0%
Scottish Borders	0	0	0%	0	0%	0	0%
South Ayrshire	8	2	25%	4	50%	2	25%
South Lanarkshire	25	4	16%	12	48%	4	16%
Stirling	18	5	28%	0	0%	0	0%
West Dunbartonshire	20	2	10%	35	175%	0	0%
<i>West Lothian*</i>	<i>21</i>	<i>0</i>	<i>0%</i>	<i>0</i>	<i>0%</i>	<i>0</i>	<i>0%</i>
SCOTLAND	391	55	14%	113	29%	56	14%

** Projected figures based on last year's returns.*

Note: Percentages in this table represent numbers as a proportion of the total number of usable pitches.

**Table 5: Council/RSL Sites: Age Structure Profile by Site
January 2008**

Local Authority	Site	Total People	Under 5 years	5 - 11 years	12 - 15 years	16 to 19 years	20 to 59 years	60 plus years
Aberdeen City	Clinterty Caravan Park	58	9%	26%	7%	7%	48%	3%
Aberdeenshire	Greenbanks	0	0	0	0	0	0	0
Angus	St Christopher's	42	5%	14%	0%	0%	62%	19%
Argyll & Bute	Duncholgan	17	12%	6%	6%	6%	53%	18%
	Ledaig	19	5%	26%	5%	11%	53%	0%
	Torlochan	7	29%	14%	29%	0%	14%	14%
Clackmannanshire	Westhaugh	0	0	0	0	0	0	0
Dumfries & Galloway	Barlockhart	7	0%	0%	0%	14%	0%	86%
	Thistlegrove	57	18%	9%	7%	7%	49%	11%
Dundee City	Balmuir Wood	23	9%	26%	13%	0%	48%	4%
East and Midlothian	Old Dalkeith Colliery	41	17%	15%	7%	7%	51%	2%
East Dunbartonshire	Redhills Travellers Site	15	27%	20%	0%	0%	53%	0%
Edinburgh City	North Cairntow	40	8%	28%	15%	5%	40%	5%
Falkirk	Redding Travellers Site	48	23%	17%	4%	8%	42%	6%
Fife	Heathery Wood	74	27%	24%	3%	0%	45%	1%
	Tarvit Mill	67	19%	10%	10%	6%	45%	9%
	Thornton Wood	38	26%	32%	11%	0%	32%	0%
Glasgow City	Oakbank Wharf	0	0	0	0	0	0	0
Highland	Aonachan G.T.S	31	26%	6%	6%	0%	58%	3%
	Kentallen G.T.S	10	10%	40%	10%	0%	40%	0%
	Longman Road GTS	33	12%	21%	6%	30%	30%	0%
	Newtonmore G.T.S	0	0	0	0	0	0	0
North Ayrshire	Redburn Site	41	5%	27%	17%	2%	44%	5%
Perth And Kinross	Double Dykes	56	9%	14%	13%	21%	32%	11%
Scottish Borders	Tweedside Caravan Park	0	0	0	0	0	0	0
South Ayrshire	Houdston	27	11%	19%	7%	4%	52%	7%
South Lanarkshire	Springbank	22	18%	41%	9%	5%	23%	5%
	Swinhill	67	6%	12%	7%	13%	49%	12%
Stirling	Bridgend Park	32	22%	3%	6%	56%	6%	6%
West Dunbartonshire	Dennistoun Forge	60	7%	13%	15%	8%	45%	12%
SCOTLAND		932	14%	18%	8%	9%	43%	7%

Note: Due to changes in the age brackets collected on the January 2008 count form, figures from West Lothian cannot be included in this analysis

**Table 6: Private Sites: Availability and Usage
January 2008**

Local Authority	Site	Site Type	Households		Use Last 6 Months
			Short Stay	Long Stay	
Aberdeen City	a	Specifically for Gypsies/Travellers	0	0	Continuous
Aberdeenshire	a	Holiday	0	0	Occasional
	b	Holiday	0	0	Occasional
Dumfries & Galloway	a	Holiday	0	2	Continuous
	b	Holiday	0	2	Occasional
East Ayrshire	a	Holiday	0	0	Occasional
Falkirk	a	Specifically for Gypsies/Travellers	0	2	Continuous
	b	Specifically for Gypsies/Travellers	0	3	Continuous
Fife	a	Specifically for Gypsies/Travellers	0	22	Continuous
	b	Specifically for Gypsies/Travellers	0	2	Continuous
Highland	a	Holiday	0	0	Occasional
Moray	a	Holiday	0	0	Occasional
	b	Holiday	0	0	Occasional
Perth And Kinross	a	Holiday	0	10	Occasional
	b	Specifically for Gypsies/Travellers	0	13	Continuous
	c	Specifically for Gypsies/Travellers	0	2	Continuous
Scottish Borders	a	Holiday	0	0	Not at all
South Lanarkshire	a	Holiday	0	6	Continuous
	b	Specifically for Gypsies/Travellers	8	9	Continuous
SCOTLAND			8	73	

* Projected figures based on last year's returns.

**Table 7: Characteristics of Unauthorised Encampments Occupied
January 2008**

Local Authority	Location	At the time of the count		Use last 6 months	
		Number of Caravans	How Long Had Caravans Occupied Site?	Number of Times	Number of Caravans
Aberdeen City	1	4	Longer	5	58
	2	16	Longer	1	30
Aberdeenshire	1	5	1 or 2 weeks	2	10
	2	16	1 or 2 weeks	1	16
East Ayrshire	1	2	Longer	1	2
Fife	1	2	Longer	5	6
	2	4	1 or 2 weeks	3	2
Highland	1	3	Longer	3	3
	2	1	1 or 2 weeks	3	1
	3	1	Longer	2	5
	4	1	1 or 2 weeks	1	1
	5	2	1 or 2 weeks	3	7
Moray	1	4	Longer	17	32
	2	4	Longer	2	7
	3	7	Longer	1	7
Perth And Kinross	1	4	Longer	1	4
South Ayrshire	1	8	Few days	3	8
West Dunbartonshire	1	5	1 or 2 weeks	5	25
West Lothian*	1	9	/	/	/
	2		/	/	/
SCOTLAND	20	98		59	224

* Projected figures based on last year's returns.

/ indicates where figures for West Lothian cannot be produced as data is taken from a new question introduced in the January 2008 count.

Table 8: Use of Unauthorised Encampments in Last 6 Months

Local Authority	Number of Locations Identified	Number Occupied at Count	Number of Times Occupied in Last 6 Months	Total Number of Caravans Occupied in Last 6 Months
Aberdeen City	6	2	17	167
Aberdeenshire	6	2	5	35
Angus	4	0	4	22
Clackmannanshire	3	0	4	38
Dumfries & Galloway	5	0	11	58
Dundee City	6	0	10	0
East and Midlothian	15	0	22	195
East Ayrshire	1	1	1	2
Edinburgh, City of	4	0	6	37
Falkirk	3	0	3	34
Fife	11	2	25	141
Glasgow City	1	0	0	0
Highland	19	5	36	55
Inverclyde	3	0	3	16
Moray	6	3	31	77
North Ayrshire	6	0	21	121
North Lanarkshire	9	0	9	136
Orkney	2	0	1	3
Perth And Kinross	18	1	16	39
Renfrewshire	6	0	5	24
Scottish Borders	6	0	0	0
South Ayrshire	9	1	15	58
South Lanarkshire	3	0	4	9
Stirling	6	0	12	48
West Dunbartonshire	6	1	13	85
<i>West Lothian*</i>	6	2	/	/
SCOTLAND	170	20	274	1400

** Projected figures based on last year's returns.*

/ indicates where figures for West Lothian cannot be produced for this table as data is taken from a new question introduced in the January 2008 count.

**Table 9: Gypsies/Travellers Households by Local Authority Area and Type of Site
January 2008**

Local Authority	Council/RSL	Private	Camps	Total Households
Aberdeen	33%	0%	67%	30
Aberdeenshire	0%	0%	100%	21
Angus	100%	0%	0%	7
Argyll & Bute	100%	0%	0%	16
Clackmannanshire	0	0	0	0
Dumfries & Galloway	83%	17%	0%	24
Dundee	100%	0%	0%	12
East Ayrshire	0%	0%	100%	2
East Dunbartonshire	100%	0%	0%	5
East/ Midlothian	100%	0%	0%	12
East Renfrewshire	0	0	0	0
Edinburgh	100%	0%	0%	12
Eilean Siar	0	0	0	0
Falkirk	71%	29%	0%	17
Fife	61%	32%	8%	76
Glasgow	0	0	0	0
Highland	77%	0%	23%	35
Inverclyde	0	0	0	0
Moray	0%	0%	100%	15
North Ayrshire	100%	0%	0%	12
North Lanarkshire	0	0	0	0
Orkney	0	0	0	0
Perth & Kinross	36%	56%	9%	45
Renfrewshire	0%	0%	0%	0
Scottish Borders	0	0	0	0
Shetland	0	0	0	0
South Ayrshire	50%	0%	50%	16
South Lanarkshire	51%	49%	0%	47
Stirling	100%	0%	0%	16
West Dunbartonshire	80%	0%	20%	25
<i>West Lothian*</i>	<i>10%</i>	<i>0%</i>	<i>90%</i>	<i>10</i>
SCOTLAND	61%	18%	22%	455

* Projected figures based on last year's returns.

/ Figures for West Lothian cannot be produced for this table as data is taken from a new question introduced in the January 2008 count