

# Statistics Publication Notice

Health and Care Series

ISSN 1479-7569 (*online*)

## CHILD PROTECTION STATISTICS 2006/07

25 September 2007

### A National Statistics Publication for Scotland

This publication presents statistics on Child Protection in Scotland. Headline messages are:

- In 2006/07, there were 11,960 child protection referrals, of which 47% were for boys, 50% were for girls, and 2% were for children whose gender was not known (largely due to being unborn). (Table 1, Chart 1)
- Thirty-nine per cent of child protection referrals resulted in an inter-agency case conference in 2006/07. This compares to 38% in 2005/06 and 36% in 2004/05. (Table 1, Table 2)
- Over 80% of children who were subject to a case conference were living at home prior to being referred. (Table 2)
- For eighty-five per cent of children who were subject to a case conference, the primary known/suspected abuser was the child's birth parent (where this was known). (Table 3)
- Of the 4,608 case conferences, 68% resulted in the child being placed on the local child protection register compared to 70% in the previous year. (Table 3, Table 4)
- In 2006/07, the number of registrations on to child protection registers as a result of emotional abuse were up by 26%, and by physical neglect were up by 21%. The number of registrations due to sexual abuse were down by 11%. (Table 4, Chart 2)
- Twelve per cent of registrations on to child protection registers in 2006/07 were of children who were known to have been previously on a child protection register. This compares with 14% in 2005/06. (Table 5)

- The number of de-registrations from child protection registers between 1<sup>st</sup> April 2006 and 31<sup>st</sup> March 2007 was 3,084. Nearly 80% of these de-registrations were for children who had been on the register for less than one year. (Table 6)
- As at 31 March 2007, there were 2,593 children on Child Protection Registers, an increase of 13% compared with the previous year. A similar number of boys and girls were on child protection registers, and just over 80 per cent of children were under the age of 11 years old. (Table 7)
- At 31<sup>st</sup> March 2007, 49% of all children on local child protection registers were registered because of physical neglect, 23% because of physical injury, 18% because of emotional abuse and 9% because of sexual abuse. (Table 8)

**The following charts are available:**

Chart 1 - Number of child protection referrals by gender, 1999/00-2006/07

Chart 2 - Number of registrations to child protection registers following a case conference by category of abuse/risk, 1999/00-2006/07

**The following tables are available:**

Table 1 - Number of child protection referrals: 1999/00-2006/07 by gender and age group

Table 2 - Number of child protection referrals that resulted in a case conference: 1999/00-2006/07 by placement of children prior to referral

Table 3 - Number of child protection referrals that resulted in a case conference: 1999/00-2006/07 by child's primary known/suspected abuser

Table 4 - Number of registrations following a case conference: 1999/00-2006/07 by category of abuse/risk identified by conference

Table 5 - Number of registrations following a case conference: 2005/06-2006/07 by length of time since de-registration before this registration

Table 6 - Number of de-registrations: 1999/00-2006/07 by category of abuse/risk identified and length of time on register

Table 7 - Number of children on child protection registers: 31 March 2000-2007 by gender and age group

Table 8 - Number of children on child protection registers: 31 March 2006-2007 by category of abuse/risk identified

Table 9 - Numbers of child protection referrals, subject to a case conference, registrations, de-registrations and on child protection registers: 2000-2007

Table 10 - Number of children on child protection registers and population rates: 31 March 2000-2007 by local authority

Table 11 - Numbers of child protection referrals, subject to a case conference, registrations, de-registrations and on child protection registers by local authority: 2006/07

## **BACKGROUND NOTES**

### **Method of Collection**

Each local authority is asked to submit an annual survey form providing aggregate data for children going through the process of child protection. Figures were collected for the number of child protection referrals, number of child protection referrals that resulted in a case conference, number of registrations, number of de-registrations and number of children on child protection registers. The dates for the collection is throughout the financial year, 1<sup>st</sup> April 2006 to 31<sup>st</sup> March 2007.

### **Change in Methodology**

From 2005/06, to improve consistency in reporting across local authorities, the question in relation to the number of child protection referrals was revised from asking for the number of children who had a child protection referral to asking for the total number of child protection referrals and the total number of children these involved. The reason for this change was to take into account that a child may be subject to more than one child protection referral in the same year, and that more than one child could be involved in a single child protection referral. In previous years, the child was only being counted once by some local authorities, whereas from 2005/06 this was now a count of referrals and a child could be counted more than once. Also, if a number of children were included in a single child protection referral, then all children were to be counted (as if they had each had their own child protection referral).

This change in the way Child Protection Referrals were to be counted may also have affected the number of Case Conferences and any subsequent Child Protection Registrations (see Tables 2 – 5) as a child who was subject to more than one Case Conference and Child Protection registration during the year will now be counted more than once by some local authorities.

As a result of this change any comparisons pre- and post- 2005/06 should be made with caution.

### **Revisions to 2005/06 figures**

Two local authorities revised their previously published 2005/06 figures. These revisions have resulted in the number of child protection referrals, the number of case conferences, the number of registrations and the number of de-registrations for 2005/06 being revised.

### **Child protection referrals in 2006/07**

Local Authorities reported an increase in child protection referrals in 2006/07 because of the following:

- Improved information-sharing;
- Improved record-keeping;
- Increased single-agency and multi-agency training and working in child protection;
- Increased awareness of child protection issues by staff across a range of agencies.

## Resources

The information in this News Release was obtained from the statistical return. The attached link gives details of the statistics collected from each local authority.

<http://www.scotland.gov.uk/Topics/Statistics/Browse/Children/SurveyChildProtection>

This News Release is available on the Scottish Government website at:-

<http://www.scotland.gov.uk/stats/bulletins/00609>

More information on other children's areas and social work staffing, can be seen at

<http://www.scotland.gov.uk/childrenstats>

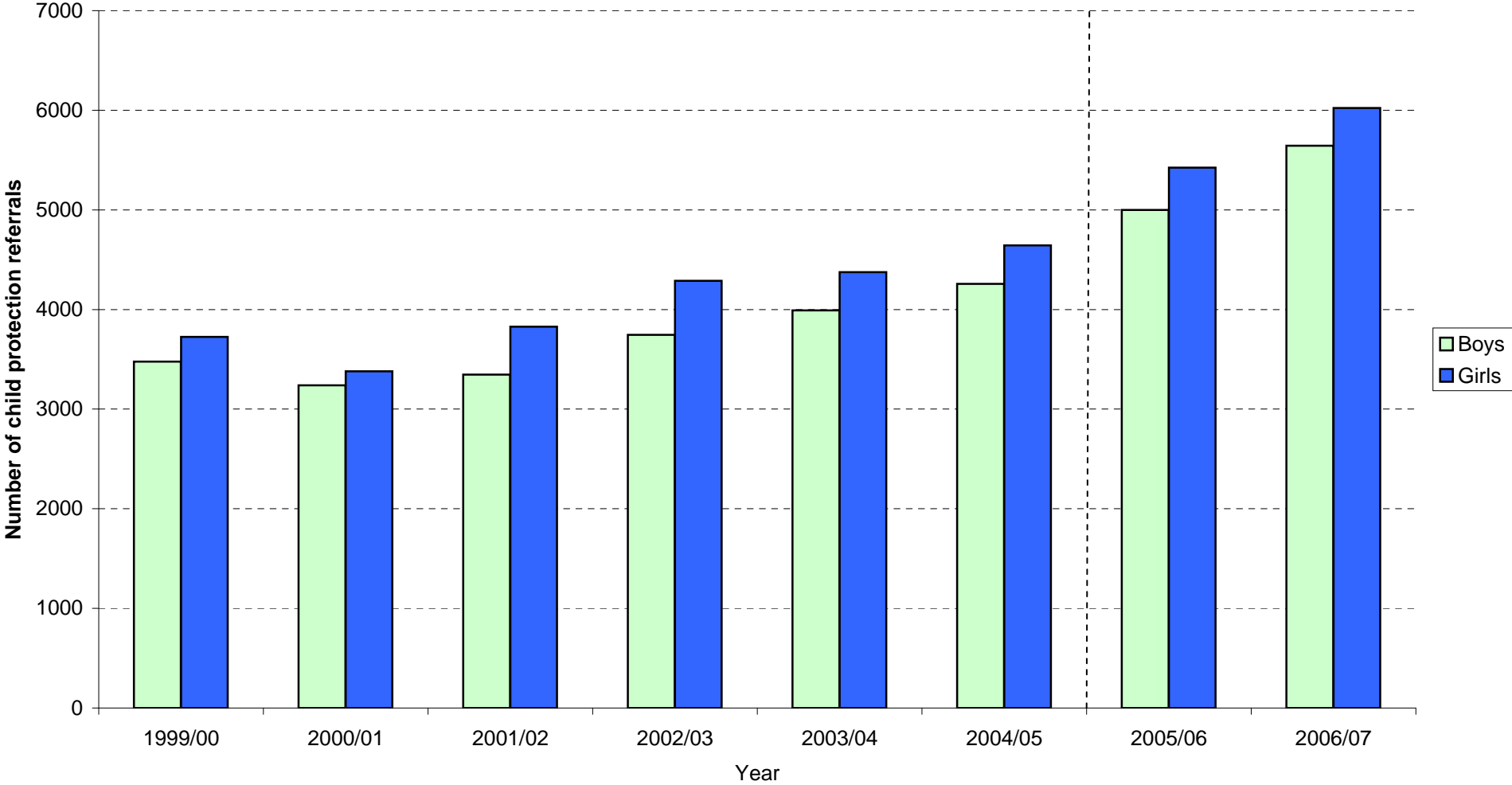
## General

This is a National Statistics publication. National Statistics are produced to high professional standards set out in the National Statistics Code of Practice. They undergo regular quality assurance reviews to ensure that they meet customer needs. They are produced free from any political interference.

Public enquiries (**non-media**) about the information contained in this Publication Notice should be addressed to Gary Sutton, Scottish Government, Area 1-B, Victoria Quay, Edinburgh, EH6 6QQ (telephone 0131 244 1690 or e-mail [gary.sutton@scotland.gsi.gov.uk](mailto:gary.sutton@scotland.gsi.gov.uk) ).

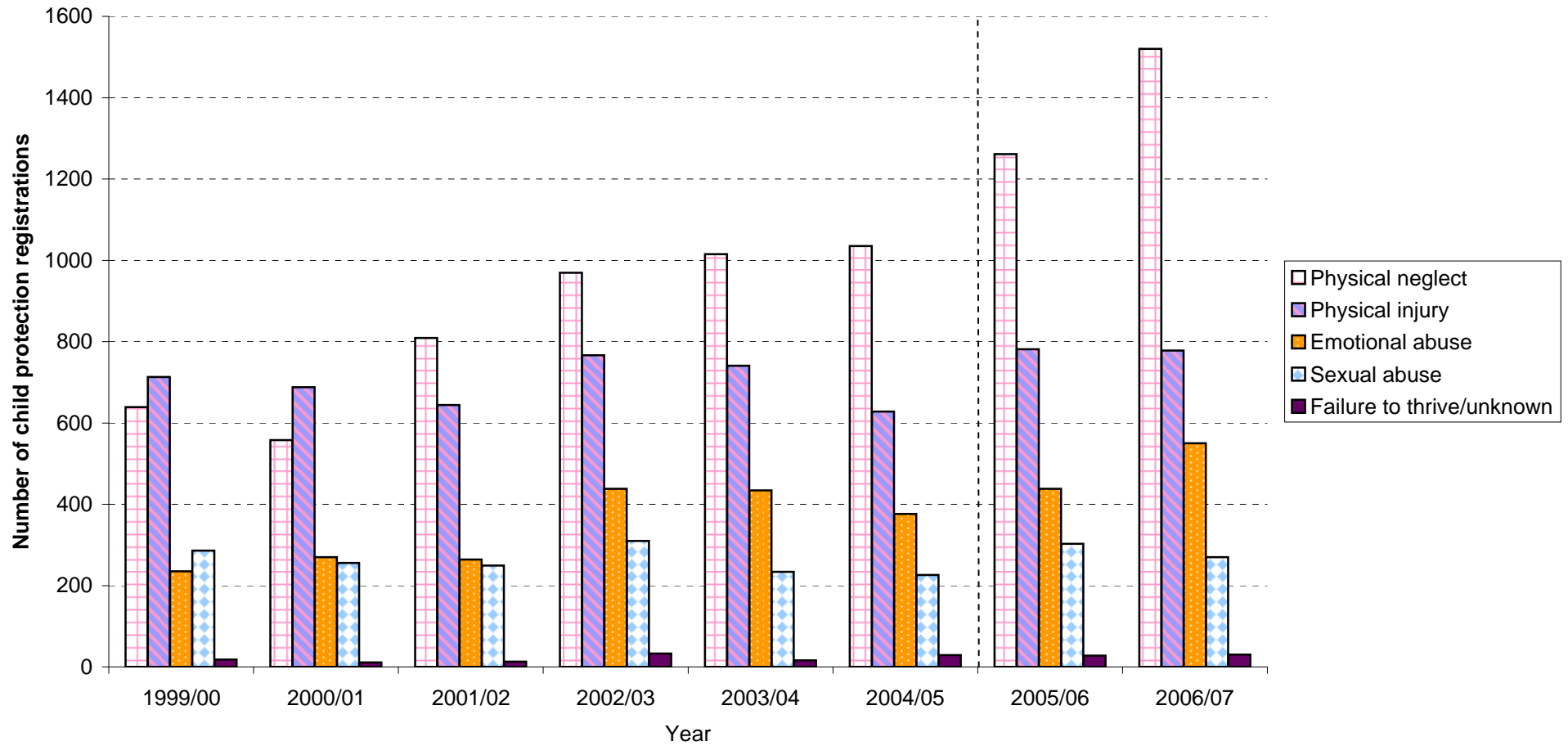
**Media** enquiries about the information in this Statistics Publication Notice should be addressed to Samantha Fiander on 0131 244 2087.

**Chart 1: Number of child protection referrals by gender, 1999/00-2006/07**



Note : Figures prior to 2005/06 figures may not be directly comparable due to a definitional change in counting child protection referrals made in 2005/06.

**Chart 2: Number of registrations to child protection registers following a case conference by category of abuse/risk, 1999/00-2006/07**



Note : Figures prior to 2005/06 figures may not be directly comparable due to a definitional change in counting child protection referrals made in 2005/06.

**TABLE 1**  
**NUMBER OF CHILD PROTECTION REFERRALS: 1999/00-2006/07**  
**BY GENDER AND AGE GROUP**

Age/gender	Year Ended 31 March.....								% of total 2007	% change 2006-2007
	2000	2001	2002	2003	2004	2005	2006	2007		
<b>Boys</b>										
Unborns	-	-	-	-	-	-	49	-		
0-4	1,286	1,053	1,023	1,252	1,260	1,444	1,554	1,816	15%	17%
5-10	1,250	1,142	1,267	1,400	1,555	1,515	1,862	2,108	18%	13%
11-15	907	1,002	1,003	1,044	1,114	1,169	1,407	1,621	14%	15%
16+	34	41	53	50	61	83	95	81	1%	-15%
Unknown	-	-	-	-	-	46	33	18	0%	-45%
<b>Total</b>	<b>3,477</b>	<b>3,239</b>	<b>3,345</b>	<b>3,746</b>	<b>3,990</b>	<b>4,257</b>	<b>5,000</b>	<b>5,644</b>	<b>47%</b>	<b>13%</b>
<b>Girls</b>										
Unborns	-	-	-	-	-	-	56	-	0%	
0-4	1,152	915	1,035	1,232	1,240	1,331	1,488	1,805	15%	21%
5-10	1,216	1,121	1,215	1,436	1,396	1,462	1,677	1,837	15%	10%
11-15	1,313	1,282	1,496	1,536	1,589	1,675	1,995	2,192	18%	10%
16+	43	62	81	83	150	117	156	159	1%	2%
Unknown	-	-	-	-	-	58	52	29	0%	-44%
<b>Total</b>	<b>3,724</b>	<b>3,380</b>	<b>3,827</b>	<b>4,287</b>	<b>4,376</b>	<b>4,643</b>	<b>5,424</b>	<b>6,022</b>	<b>50%</b>	<b>11%</b>
<b>Gender Unknown</b>										
<b>Total</b>	-	-	-	-	-	233	143	294	2%	106%
<b>All people</b>										
Unborns	-	-	-	-	-	-	200	270	2%	35%
0-4	2,438	1,968	2,058	2,485	2,500	2,837	3,053	3,634	30%	19%
5-10	2,466	2,263	2,482	2,835	2,951	3,021	3,541	3,952	33%	12%
11-15	2,220	2,284	2,498	2,580	2,704	2,885	3,404	3,817	32%	12%
16+	77	103	134	134	211	205	251	240	2%	-4%
Unknown	-	-	-	-	-	185	118	47	0%	-60%
<b>Total</b>	<b>7,201</b>	<b>6,619</b>	<b>7,172</b>	<b>8,033</b>	<b>8,366</b>	<b>9,133</b>	<b>10,567</b>	<b>11,960</b>	<b>100%</b>	<b>13%</b>

**Note** : From 1999/00 to 2003/04, 'unknowns' were allocated to a category rather than being reported as unknown.

**Note** : In 2006/07, the gender-split for unborns was not requested so these are all allocated as 'unknown gender'.

**Note** : Data prior to 2005/06 are not comparable to previous years due to definitional change for referrals (see background notes).

**Note** : For cells shown as "-", figures are not available.

**Note** : Some revisions to 2005/06 data (see background notes).

**TABLE 2**  
**NUMBER OF CHILD PROTECTION REFERRALS THAT RESULTED IN A CASE CONFERENCE: 1999/00-2006/07**  
**BY PLACEMENT OF CHILDREN PRIOR TO REFERRAL**

Placement of children prior to referral	Year Ended 31 March.....								% of total 2007	% change 2006-2007
	2000	2001	2002	2003	2004	2005	2006	2007		
At home	2,281	2,006	2,382	2,878	2,915	2,661	3,321	3,818	83%	15%
With relatives	113	150	170	97	163	121	133	141	3%	6%
With foster carers	75	73	210	135	166	91	88	56	1%	-36%
In a residential establishment	23	25	27	29	30	18	30	19	0%	-37%
Other placement	100	98	62	105	77	122	138	128	3%	-7%
Unknown	-	-	-	-	-	290	322	446	10%	39%
<b>Total</b>	<b>2,593</b>	<b>2,352</b>	<b>2,851</b>	<b>3,244</b>	<b>3,351</b>	<b>3,303</b>	<b>4,032</b>	<b>4,608</b>	<b>100%</b>	<b>14%</b>

**Note** : For cells shown as "-", figures are not available.

**Note** : From 1999/00 to 2003/04, 'unknowns' were allocated to a category rather than being reported as unknown.

**Note** : Figures prior to 2005/06 figures may not be directly comparable due to a definitional change in counting child protection referrals made in 2005/06 (see background notes).

**Note** : Some revisions to 2005/06 data (see background notes).

**TABLE 3**  
**NUMBER OF CHILD PROTECTION REFERRALS THAT RESULTED IN A CASE CONFERENCE: 1999/00-2006/07**  
**BY CHILD'S PRIMARY KNOWN/SUSPECTED ABUSER**

Primary known/suspected abuser	Year Ended 31 March.....								% of total	% change
	2000	2001	2002	2003	2004	2005	2006	2007	2007	2006-2007
Natural mother	-	1,128	1,325	1,647	1,625	1,185	1,411	1,722	37%	22%
Natural father	-	680	829	846	1,015	524	561	608	13%	8%
<b>Total - natural parent</b>	<b>2,034</b>	<b>1,808</b>	<b>2,154</b>	<b>2,493</b>	<b>2,640</b>	<b>1,709</b>	<b>1,972</b>	<b>2,330</b>	<b>51%</b>	<b>18%</b>
Step parent	122	85	100	128	133	67	109	76	2%	-30%
Parent's co-habitee	191	152	255	263	175	119	174	139	3%	-20%
Other relative (including sibling)	142	167	172	165	203	124	116	98	2%	-16%
Other person known to child / family	86	83	105	137	149	96	117	72	2%	-38%
Person unknown to child / family	18	56	64	58	51	29	9	6	0%	-33%
Child him/herself was known/suspected perpetrator	-	-	-	-	-	-	6	12	0%	100%
Unknown	-	-	-	-	-	1,159	1,529	1,875	41%	23%
<b>Total</b>	<b>2,593</b>	<b>2,352</b>	<b>2,851</b>	<b>3,244</b>	<b>3,351</b>	<b>3,303</b>	<b>4,032</b>	<b>4,608</b>	<b>100%</b>	<b>14%</b>

**Note** : Breakdown of natural parent was not collected prior to 2000/01.

**Note** : For cells shown as "-", figures are not available.

**Note** : From 1999/00 to 2003/04, 'unknowns' were allocated to a category rather than being reported as unknown.

**Note** : Figures prior to 2005/06 may not be directly comparable due to a definitional change in counting child protection referrals made in 2005/06 (see background notes).

**Note** : Some revisions to 2005/06 data (see background notes).

**TABLE 4**  
**NUMBER OF REGISTRATIONS FOLLOWING A CASE CONFERENCE: 1999/00-2006/07**  
**BY CATEGORY OF ABUSE/RISK IDENTIFIED BY CONFERENCE**

Category of abuse/risk	Year Ended 31 March.....								% of total 2007	% change 2006-2007
	2000	2001	2002	2003	2004	2005	2006	2007		
Physical injury	713	688	644	766	741	628	781	778	25%	0%
Sexual abuse	286	256	249	310	234	226	303	270	9%	-11%
Emotional abuse	235	270	264	438	434	376	438	550	17%	26%
Physical neglect	639	558	809	969	1,015	1,035	1,261	1,520	48%	21%
Failure to thrive	18	11	13	33	16	11	6	7	0%	17%
Unknown	-	-	-	-	-	18	22	23	1%	5%
<b>Total</b>	<b>1,890</b>	<b>1,783</b>	<b>1,979</b>	<b>2,517</b>	<b>2,440</b>	<b>2,294</b>	<b>2,811</b>	<b>3,148</b>	<b>100%</b>	<b>12%</b>

**Note** : From 1999/00 to 2003/04, 'unknowns' were allocated to a category rather than being reported as unknown.

**Note** : Figures prior to 2005/06 may not be comparable due to a definitional change made in counting child protection referrals in 2005/06 (see background notes).

**Note** : Prior to 2005/06, 'Failure to thrive' included child known/suspected perpetrator.

**Note** : Some revisions to 2005/06 data (see background notes).

**TABLE 5**  
**NUMBER OF REGISTRATIONS FOLLOWING A CASE CONFERENCE: 2005/06 - 2006/07**  
**BY LENGTH OF TIME SINCE DE-REGISTRATION BEFORE THIS REGISTRATION**

Category of abuse/risk	Year Ended 31 March.....		% of total
	2006	2007	2007
Never been registered before	2,150	2,565	81%
Registered before but time unknown	N/A	8	0%
Less than 6 months	64	92	3%
6 months - < 1 year	58	68	2%
1 year - < 18 months	27	46	1%
18 months - < 2 years	35	43	1%
2 years or more	204	120	4%
Not known if been registered before	273	206	7%
<b>Total</b>	<b>2,811</b>	<b>3,148</b>	<b>100%</b>

**Note** : 'Registered before but time unknown' was not collected prior to 2006/07

**Note** : Some revisions to 2005/06 data (see background notes).

**TABLE 6**  
**NUMBER OF DE-REGISTRATIONS : 1999/00-2006/07**  
**BY CATEGORY OF ABUSE/RISK IDENTIFIED AND LENGTH OF TIME ON REGISTER**

	Year Ended 31 March.....								% of total 2007	% change 2006-2007
	2000	2001	2002	2003	2004	2005	2006	2007		
<b>Category of abuse/risk</b>										
Physical injury	839	627	758	770	792	714	808	784	25%	-3%
Sexual abuse	358	300	296	318	313	277	293	322	10%	10%
Emotional abuse	222	202	319	397	454	427	478	599	19%	25%
Physical neglect	673	513	825	907	1,041	1,115	1,284	1,367	44%	6%
Failure to thrive	19	44	18	17	32	18	9	3	0%	-67%
Unknown	-	-	-	-	-	23	15	9	0%	-40%
<b>Length of time registered</b>										
Less than 6 months	716	570	815	942	1,085	901	1,097	1,329	43%	21%
6 months to under 1 year	702	543	729	835	843	971	1,052	1,092	35%	4%
1 year to under 18 months	305	303	328	316	407	357	404	362	12%	-10%
18 months to under 2 years	163	127	185	151	131	161	166	158	5%	-5%
2 years or more	226	144	159	164	168	184	168	143	5%	-15%
<b>Total</b>	<b>2,112</b>	<b>1,687</b>	<b>2,216</b>	<b>2,408</b>	<b>2,633</b>	<b>2,574</b>	<b>2,887</b>	<b>3,084</b>	<b>100%</b>	<b>7%</b>

**Note** : From 1999/00 to 2003/04, 'unknowns' were allocated to a category rather than being reported as unknown.

**Note** : Prior to 2005/06, 'Failure to thrive' included child known/suspected perpetrator.

**Note** : Some revisions to 2005/06 data (see background notes).

**TABLE 7**  
**NUMBER OF CHILDREN ON CHILD PROTECTION REGISTERS: 31 MARCH 2000-2007**  
**BY GENDER AND AGE GROUP**

Age group/ gender	As at 31 March.....								% of total 2007	% of Scottish population	% change 2006-2007
	2000	2001	2002	2003	2004	2005	2006	2007			
<b>Boys</b>											
0-4	483	454	476	490	523	533	554	625	24%	0.5%	13%
5-10	368	348	354	408	417	355	407	434	17%	0.3%	7%
11-15	217	224	179	235	215	206	207	226	9%	0.1%	9%
16+	11	8	4	4	8	4	5	5	0%	0.0%	0%
<b>Total</b>	<b>1,080</b>	<b>1,035</b>	<b>1,013</b>	<b>1,137</b>	<b>1,163</b>	<b>1,098</b>	<b>1,179</b>	<b>1,290</b>	<b>50%</b>	<b>0.2%</b>	<b>9%</b>
<b>Girls</b>											
0-4	354	371	458	481	497	493	490	607	23%	0.5%	24%
5-10	351	344	327	405	377	354	370	421	16%	0.3%	14%
11-15	249	236	208	258	199	208	228	234	9%	0.2%	3%
16+	17	15	12	8	9	4	9	10	0%	0.0%	11%
<b>Total</b>	<b>970</b>	<b>965</b>	<b>1,005</b>	<b>1,152</b>	<b>1,082</b>	<b>1,059</b>	<b>1,109</b>	<b>1,272</b>	<b>49%</b>	<b>0.2%</b>	<b>15%</b>
<b>All people</b>											
Unborns	-	-	-	-	-	-	18	31	1%	N/A	72%
0-4	837	825	933	971	1,020	1,026	1,044	1,232	48%	0.5%	18%
5-10	718	693	681	813	794	710	777	855	33%	0.3%	10%
11-15	466	460	387	493	414	413	435	460	18%	0.1%	6%
16+	28	23	16	12	17	8	14	15	1%	0.0%	7%
<b>Total</b>	<b>2,050</b>	<b>2,000</b>	<b>2,018</b>	<b>2,289</b>	<b>2,245</b>	<b>2,157</b>	<b>2,288</b>	<b>2,593</b>	<b>100%</b>	<b>0.2%</b>	<b>13%</b>

**Source** : General Register Office (Scotland) - 2006 mid-year population estimates

**Note** : For Age 16+, relevant population used was 16-17 years old

**Note** : Information on unborns is not available prior to 2005/06.

**TABLE 8**  
**NUMBER OF CHILDREN ON CHILD PROTECTION REGISTERS: 31 MARCH 2006-2007**  
**BY CATEGORY OF ABUSE/RISK IDENTIFIED**

Category of abuse/risk	As at 31 March.....		% of total 2007	% change 2006-2007
	2006	2007		
Physical injury	626	585	23%	-7%
Sexual abuse	266	240	9%	-10%
Emotional abuse	371	472	18%	27%
Physical neglect	1,020	1,275	49%	25%
Failure to thrive	*	7	0%	N/A
Unknown	*	14	1%	N/A
<b>Total</b>	<b>2,288</b>	<b>2,593</b>	<b>100%</b>	<b>13%</b>

**Note** : Cells containing \* represent small numbers that are suppressed to maintain confidentiality.

**TABLE 9**  
**NUMBERS OF CHILD PROTECTION REFERRALS, SUBJECT TO A CASE CONFERENCE, REGISTRATIONS, DE-REGISTRATIONS**  
**AND ON CHILD PROTECTION REGISTERS: 2000-2007**

Summary	Year Ended 31 March.....								% change	% change
	2000	2001	2002	2003	2004	2005	2006	2007	2006-2007	2000-2007
Referrals	7,201	6,619	7,172	8,033	8,366	9,133	10,567	11,960	13%	66%
Case Conferences	2,593	2,352	2,851	3,244	3,351	3,303	4,032	4,608	14%	78%
Registrations	1,890	1,783	1,979	2,517	2,440	2,294	2,811	3,148	12%	67%
De-registrations	2,112	1,687	2,216	2,408	2,633	2,574	2,887	3,084	7%	46%
Children on CP registers (at 31 March....)	2,050	2,000	2,018	2,289	2,245	2,157	2,288	2,593	13%	26%

**Note** : Please refer to footnotes in Tables 1-8.

**Note** : Figures prior to 2005/06 may not be comparable due to a definitional change made in counting child protection referrals in 2005/06 (see background notes).

**Note** : Some revisions to 2005/06 data (see background notes).

**TABLE 10**  
**NUMBER OF CHILDREN ON CHILD PROTECTION REGISTERS AND POPULATION RATES: 31 MARCH 2000-2007**  
**BY LOCAL AUTHORITY AREA**

Local authority area	As at 31 March...															
	2000		2001		2002		2003		2004		2005		2006		2007	
	Number on Register	Rate per 1,000 population aged 0-15	Number on Register	Rate per 1,000 population aged 0-15	Number on Register	Rate per 1,000 population aged 0-15	Number on Register	Rate per 1,000 population aged 0-15	Number on Register	Rate per 1,000 population aged 0-15	Number on Register	Rate per 1,000 population aged 0-15	Number on Register	Rate per 1,000 population aged 0-15	Number on Register	Rate per 1,000 population aged 0-15
Aberdeen City	144	3.7	148	4.3	176	4.9	163	4.8	150	4.5	147	4.5	159	4.8	142	4.3
Aberdeenshire	89	1.9	82	1.7	113	2.4	112	2.4	104	2.2	108	2.3	105	2.3	68	1.5
Angus	50	2.3	45	2.2	45	2.2	86	4.3	61	3.0	53	2.6	62	3.1	88	4.4
Argyll & Bute	42	2.7	18	1.1	25	1.5	48	2.9	44	2.7	39	2.4	56	3.5	34	2.2
Clackmannanshire	20	2.0	11	1.1	17	1.7	29	3.0	28	2.9	12	1.3	24	2.5	23	2.4
Dumfries & Galloway	55	2.0	111	4.0	59	2.1	101	3.7	62	2.3	62	2.4	48	1.8	57	2.2
Dundee City	42	1.5	45	1.8	50	1.9	79	3.1	67	2.7	83	3.4	93	3.9	89	3.7
East Ayrshire	14	0.6	10	0.4	27	1.1	31	1.3	35	1.5	41	1.8	44	2.0	45	2.0
East Dunbartonshire	14	0.7	4	0.2	10	0.5	14	0.7	19	0.9	8	0.4	9	0.4	25	1.3
East Lothian	70	3.9	60	3.2	49	2.6	77	4.1	57	3.1	27	1.5	44	2.4	46	2.5
East Renfrewshire	19	1.1	21	1.1	18	0.9	7	0.4	9	0.5	15	0.8	20	1.1	18	1.0
Edinburgh, City of	317	4.1	309	4.2	315	4.2	332	4.6	326	4.6	234	3.3	290	4.1	311	4.4
Eilean Siar	12	2.2	19	3.8	11	2.1	18	3.7	23	4.8	13	2.7	12	2.5	15	3.2
Falkirk	73	2.6	86	3.0	63	2.2	64	2.3	67	2.4	68	2.4	55	1.9	81	2.9
Fife	76	1.1	65	0.9	83	1.2	96	1.4	122	1.8	118	1.8	168	2.5	202	3.1
Glasgow City	325	2.8	305	2.9	242	2.2	207	2.0	275	2.7	264	2.7	308	3.1	353	3.6
Highland	166	3.9	96	2.3	112	2.7	124	3.1	102	2.6	118	3.0	111	2.8	125	3.2
Inverclyde	8	0.5	9	0.6	20	1.2	34	2.1	7	0.4	34	2.2	33	2.2	30	2.0
Midlothian	57	3.5	56	3.3	62	3.6	67	4.0	68	4.2	71	4.5	50	3.2	80	5.1
Moray	22	1.2	30	1.7	28	1.6	33	1.9	45	2.6	70	4.1	56	3.5	72	4.5
North Ayrshire	41	1.5	22	0.8	10	0.4	22	0.8	26	1.0	27	1.0	34	1.3	56	2.2
North Lanarkshire	52	0.8	48	0.7	68	1.0	84	1.3	78	1.2	92	1.4	61	1.0	100	1.6
Orkney Isles	2	0.5	7	1.8	2	0.5	1	0.3	8	2.2	4	1.1	7	1.9	20	5.6
Perth & Kinross	36	1.4	60	2.3	52	2.0	51	2.0	41	1.6	37	1.5	31	1.2	47	1.9
Renfrewshire	51	1.4	78	2.3	71	2.1	86	2.6	65	2.0	69	2.2	79	2.5	87	2.8
Scottish Borders	37	1.8	31	1.5	37	1.8	48	2.4	44	2.2	37	1.8	46	2.3	63	3.1
Shetland	10	2.0	11	2.3	12	2.4	8	1.7	17	3.7	8	1.7	13	2.8	10	2.3
South Ayrshire	7	0.3	13	0.6	5	0.2	27	1.4	19	1.0	28	1.4	17	0.9	29	1.5
South Lanarkshire	67	1.1	71	1.2	86	1.4	94	1.6	137	2.4	115	2.0	99	1.7	127	2.2
Stirling	21	1.3	31	1.9	35	2.1	50	3.0	25	1.5	29	1.7	21	1.3	28	1.7
West Dunbartonshire	21	1.0	14	0.8	25	1.3	13	0.7	32	1.8	23	1.3	28	1.7	22	1.3
West Lothian	90	2.7	84	2.4	90	2.6	83	2.4	82	2.4	103	3.0	105	3.1	100	2.9
<b>Scotland</b>	<b>2,050</b>	<b>2.0</b>	<b>2,000</b>	<b>2.1</b>	<b>2,018</b>	<b>2.0</b>	<b>2,289</b>	<b>2.4</b>	<b>2,245</b>	<b>2.4</b>	<b>2,157</b>	<b>2.3</b>	<b>2,288</b>	<b>2.5</b>	<b>2,593</b>	<b>2.8</b>

Source : General Register Office (Scotland) - 2000-2006 mid-year population estimates

**TABLE 11**  
**NUMBERS OF CHILD PROTECTION REFERRALS, SUBJECT TO A CASE CONFERENCE, REGISTRATIONS,**  
**DE-REGISTRATIONS AND ON CHILD PROTECTION REGISTERS BY LOCAL AUTHORITY AREA: 2006/07**

Local authority area	Year Ended 31 March 2007				As at 31 March 2007
	Number of Referrals	Number Subject to a Case Conference	Number of Registrations	Number of De-registrations	Number on Register
Aberdeen City	1,114	251	198	222	142
Aberdeenshire	940	68	63	94	68
Angus	304	150	121	95	88
Argyll & Bute	166	97	56	78	34
Clackmannanshire	131	37	29	39	23
Dumfries & Galloway	269	135	100	85	57
Dundee City	184	161	133	137	89
East Ayrshire	263	155	92	94	45
East Dunbartonshire	125	63	37	21	25
East Lothian	345	78	62	61	46
East Renfrewshire	125	52	40	39	18
Edinburgh, City of	1,018	278	235	253	311
Eilean Siar	97	24	22	17	15
Falkirk	486	134	92	61	81
Fife	496	329	286	285	202
Glasgow City	1,373	1,009	523	477	353
Highland	329	81	64	136	125
Inverclyde	179	68	48	52	30
Midlothian	309	73	62	34	80
Moray	438	75	70	55	72
North Ayrshire	387	123	65	49	56
North Lanarkshire	416	230	127	95	100
Orkney Isles	152	39	34	26	20
Perth & Kinross	135	67	51	52	47
Renfrewshire	318	239	122	137	87
Scottish Borders	258	86	73	59	63
Shetland	74	13	11	12	10
South Ayrshire	165	73	46	23	29
South Lanarkshire	473	208	121	122	127
Stirling	268	56	49	46	28
West Dunbartonshire	136	56	27	38	22
West Lothian	487	100	89	90	100
<b>Scotland</b>	<b>11,960</b>	<b>4,608</b>	<b>3,148</b>	<b>3,084</b>	<b>2,593</b>

**Note** : Please refer to footnotes in Tables 1-8.