

Statistics Release

CARE HOMES, SCOTLAND MARCH 2006

Introduction

The purpose of this Statistics Release is to present national figures for care homes for adults in Scotland. All figures relate to 31 March 2006 and are provisional. As such they are subject to change. The final figures will be published in subsequent statistics bulletins. The information is derived from the Scottish Care Home Census.

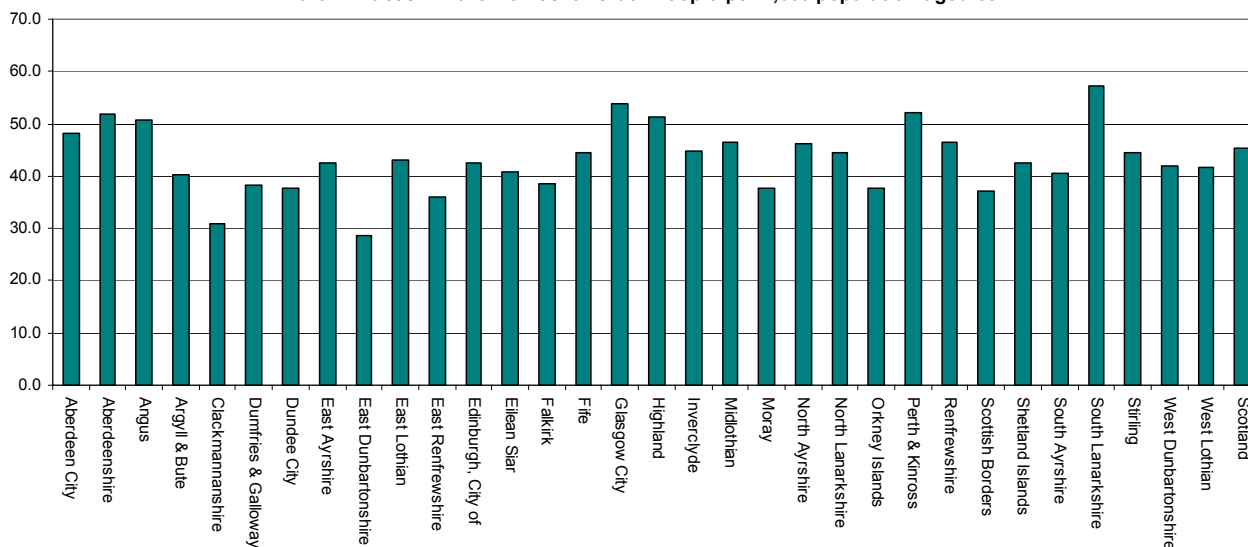
Some of the information which used to be collected as part of the Scottish Care Home Census is now collected by the Care Commission. This information is not included in this publication. More details of this can be found in the background information section at the end of this infonote.

All figures in this release omit care homes that deregistered to become Housing Support services.

Main Points

- At 31 March 2006 there were a total of 1,491 registered care homes providing 43,489 places to 38,010 residents. Annexes A and F provide further details.
- There were 38,099 registered places in care homes for older people. The number of places had decreased by 0.5 per cent since September 2005 and by 2.8 per cent from the March 2000 level.
- The average gross weekly charge for a long stay resident in an independent care home for older people was £459 in March 2006 compared to £437 in March 2005 and £418 in March 2004 (Table 5).
- In independent care homes for older people, the average weekly charge for a place without nursing care was £404 compared to £476 for a place with nursing care (Annex E).
- Of the 32,577 long stay residents in care homes for Older People, 18 per cent had spent 5 years or more in that care home.

Chart 1: Places in Care Homes for Older People per 1,000 population aged 65+



Section One: Care Homes for Older People

Table 1 – Care Homes, Places, Residents by Sector / Places per 1,000 Population, 2000 - 2006

	Mar-00	Mar-01	Mar-02	Mar-03	Mar-04	Mar-05	Mar-06
Number of Care Homes	1,060	1,038	1,019	996	989	978	960
- Of which LA/NHS	199	191	188	188	189	184	184
- Of which Private	700	687	672	654	648	642	633
- Of which Voluntary	161	160	159	154	152	152	143
Number of Places	39,204	38,425	38,128	37,924	38,243	38,316	38,099
- Of which LA/NHS	6,456	6,052	5,872	5,862	6,015	5,810	5,661
- Of which Private	27,969	27,769	27,628	27,567	27,690	27,981	28,149
- Of which Voluntary	4,779	4,604	4,628	4,495	4,538	4,525	4,289
Number of Residents	34,457	34,500	34,591	34,326	34,156	33,608	33,358
- Of which LA/NHS	5,842	5,441	5,236	5,164	5,124	4,905	4,887
- Of which Private	24,337	24,873	25,139	25,165	24,963	24,675	24,642
- Of which Voluntary	4,278	4,186	4,216	3,997	4,069	4,028	3,829
Places per 1,000 pop'n aged 65+	49.0	47.6	46.9	46.4	46.4	46.1	45.4

Source: SCHC1 March 2006

In March 2006 there were 960 care homes for older people. Of these 184 (19 per cent) were run by a Local Authority or by the NHS, 633 (66 per cent) were privately owned and the remaining 143 (15 per cent) were in the voluntary sector. In total, there were 100 fewer homes for older people in March 2006 than in March 2000 (when there were 1,060 such homes) and 18 fewer than in March 2006.

The 38,099 registered places in March 2006 represents 45.4 places per 1,000 population and consists of 5,661 places (15 per cent) in the Local Authority/NHS sector, 28,149 places (74 per cent) in the private sector and 4,289 places (11 per cent) in the voluntary sector. Between March 2000 and March 2006 the total number of registered places had fallen by 1,105 (2.8 per cent). In the Local Authority/NHS sector there had been a decrease of 795 places (12.3 per cent) whilst in the private sector there had been a small increase with an additional 180 places (an increase of less than 1 per cent). Finally, in the voluntary sector there had been a decrease of 490 places (a reduction of 10.3 per cent). Annex C and chart 1 show the number of places per 1,000 population aged 65+ for each local authority. East Dunbartonshire had 28.6 places per 1,000 population aged 65+, the fewest of all local authorities, whilst South Lanarkshire had the most at 57.2 places per 1,000 population aged 65+.

During the same period, the number of residents had fallen by 1,099 (3.2 per cent) from 34,457 to 33,358.

Table 2 - Registered Places in Care Homes for Older People, Local Authorities with the Largest Increases/Decreases

LOCAL AUTHORITY	NUMBER OF REGISTERED PLACES		
	Mar-00	Mar-06	% change between Mar-00 and Mar-06
Orkney Islands	100	136	36.0
North Lanarkshire	1,710	2,100	22.8
Fife	2,307	2,670	15.7
Clackmannanshire	203	234	15.3
Scotland	39,204	38,099	-2.8
Edinburgh, City of	3,424	2,916	-14.8
North Ayrshire	1,300	1,095	-15.8
Stirling	780	639	-18.1
Aberdeen City	1,896	1,553	-18.1

Source: SCHC1 March 2006

Table 2 shows the local authorities with the largest percentage increases and decreases in the number of registered places in care homes for older people between March 2000 and March 2006. Annex B contains details of registered places for each census between these dates for all local authorities.

The biggest percentage increase in registered places since March 2000 occurred in the Orkney Islands where the number of registered places has risen from 100 in March 2000 to 136 in March 2006 (a 36 per cent increase associated with a net increase of three care homes). Other local authorities to have experienced large increases in the percentage of registered places were North Lanarkshire, Clackmannanshire and South

Lanarkshire. The biggest percentage decrease in the number of registered places since March 2000 occurred in Aberdeen City. Here there had been a 18.1 per cent decrease, a reduction of 343 places. This corresponded to a net decrease of 7 homes over the same period. Other local authorities to have experienced a large decrease were Stirling, North Ayrshire and the City of Edinburgh.

Care Homes for Older People: Closures and New Homes

Table 3: Care Home Closures by Sector

Census Period	Number of home closures			
	LA/NHS	Private	Voluntary	Total
Apr 2000 - Mar 2001	10	25	4	39
Apr 2001 - Mar 2002	5	21	3	29
Apr 2002 - Mar 2003	2	22	6	30
Apr 2003 - Sep 2003	1	6	3	10
Oct 2003 - Mar 2004	5	5	3	13
Apr 2004 - Sep 2004	5	13	0	18
Oct 2004 - Mar 2005	2	6	2	10
Apr 2005 - Sep 2005	5	9	2	16
Oct 2005 - Mar 2006	5	7	2	14
Total	40	114	25	179

Source: SCHC1 March 2006

Table 3 shows that 14 care homes closed between September 2005 and March 2006. The homes that closed had an average of 22.8 places compared to the average size of all open care homes on 31 March 2006 of 39.7 places. Of the 179 homes which have closed since March 2000, 114 homes (64 per cent of closed homes) operated in the private sector. Forty closed homes (22 per cent of closures) were local authority run homes. The remaining 25 closures (14 per cent) operated in the voluntary sector. Annex D provides a local authority split of care home closures between March 2000 and March 2006.

Care Homes for Older People: Newly Opened Care Homes

Table 4: New Care Homes by Sector

Census Period	Number of home closures			
	LA/NHS	Private	Voluntary	Total
Apr 2000 - Mar 2001	2	12	3	17
Apr 2001 - Mar 2002	2	6	2	10
Apr 2002 - Mar 2003	1	4	2	7
Apr 2003 - Sep 2003	3	2	3	8
Oct 2003 - Mar 2004	4	4	0	8
Apr 2004 - Sep 2004	2	8	2	12
Oct 2004 - Mar 2005	0	5	0	5
Apr 2005 - Sep 2005	2	5	1	8
Oct 2005 - Mar 2006	2	2	0	4
Total	18	48	13	79

Source: SCHC1 March 2006

Since March 2000, 79 care homes have opened in Scotland. Around 61 per cent of these (48 homes) opened in the private sector whilst 18 homes opened in the local authority sector (23 per cent) and the remaining 13 (16 per cent) were in the voluntary sector. In the 6 months prior to the most recent census night in March 2006, 4 homes opened and had an average of 19.75 places (again compared to the average size of all open care homes on 31 March 2006 of 39.7 places). Annex D provides details of new care homes which opened between March 2000 and March 2006. The information is split by local authority.

Care Home Average Gross Weekly Charge

Table 5 shows the average gross weekly charge per long stay resident in care homes for older people. The table is broken down into local authority run homes and independent (private and voluntary) run homes. It gives charging information by local authority for March 2004, March 2005 and March 2006.

The average gross weekly charge per home is equal to the amount the home charges in total to all residents each week divided by the number of residents. This is before any deductions are made (such as income from local authorities for accommodation or free personal care).

The figures in the table have been weighted to reflect the capacity of care homes within each local authority.

The overall average gross weekly charge for all care homes for Older people in Scotland in March 2006 was £467. This was an increase of 4.7 per cent from the March 2005 level of £446 and of 10.4 per cent from the March 2004 level of £423. During the two year period there was a 13 per cent increase in the average charge of local authority run homes (£453 to £512) and a 9.8 per cent increase in the charge of private/voluntary homes (£418 to £459).

Table 5: Average gross Weekly Charge**March 2004 – March 2006**

Local Authority	31st March 2004			31st March 2005			31st March 2006		
	Local Authority	Independent	Total	Local Authority	Independent	Total	Local Authority	Independent	Total
Aberdeen City	418	442	439	429	460	455	440	477	472
Aberdeenshire	429	420	421	471	433	439	473	460	462
Angus	429	400	403	442	427	428	555	452	462
Argyll & Bute	551	391	416	622	402	437	740	439	485
Clackmannanshire	395	477	462	422	507	492	501	478	482
Dumfries & Galloway	--	369	369	--	388	388	--	393	393
Dundee City	615	399	433	634	414	447	634	439	470
East Ayrshire	346	404	397	360	402	398	364	419	415
East Dunbartonshire	--	459	459	--	488	488	--	511	511
East Lothian	529	429	449	547	480	494	517	500	503
East Renfrewshire	390	450	446	390	459	455	390	482	476
Edinburgh, City of ¹	604	498	521	735	528	573	523	567	557
Eilean Siar	566	*	503	678	*	588	684	*	585
Falkirk	513	410	427	526	429	446	524	437	450
Fife	575	413	436	599	434	456	631	454	477
Glasgow City	388	409	405	408	435	429	453	448	449
Highland	447	402	410	505	419	434	612	442	471
Inverclyde	--	422	422	--	432	432	--	447	447
Midlothian	315	424	399	368	450	431	406	464	451
Moray	--	396	396	--	424	424	--	437	437
North Ayrshire	389	412	409	364	423	418	375	442	438
North Lanarkshire	369	413	404	449	426	430	472	475	474
Orkney Islands	628	*	583	640	*	595	704	*	662
Perth & Kinross	419	397	399	433	417	418	446	435	436
Renfrewshire	399	413	410	420	445	441	465	459	460
Scottish Borders	365	397	389	416	415	415	416	431	427
Shetland Islands ²	889	358	567	955	378	604	1,051	*	1,051
South Ayrshire	416	419	419	425	439	437	451	456	456
South Lanarkshire ³	276	408	396	276	425	411	276	449	432
Stirling	489	410	412	535	424	424	553	452	452
West Dunbartonshire	413	420	417	430	437	434	448	452	451
West Lothian	374	413	411	374	435	432	374	465	460
Scotland	453	418	423	497	437	446	512	459	467

Source: SCHC1 March 2006

* Where the average is based on 1, 2 or 3 homes in the independent sector, the figure has been suppressed to maintain care home confidentiality
 -- This symbol indicates that there were no LA care homes in the local authority area

1. In 2004 and 2005 City of Edinburgh council supplied figures based on the total cost of running their care homes and the number of residents. In 2006 the figures supplied were the charges to residents (some / all of which would generally have been paid by the council)
2. In 2004 and 2005 seven care homes in Shetland were operated by independent sector providers. Between March 2005 and March 2006, operation of six of these was transferred to Shetland Islands Council and the 2006 figures more accurately reflect the cost of running the care homes
3. The Local Authority figures for South Lanarkshire reflect charges to residents whereas some other local authority figures relate more closely to the cost of running the care home. There is a council commitment to keep the charge to a minimum for the elderly population of South Lanarkshire

Excluding Shetland Islands (see note 2 at the bottom of table 5), the largest percentage increase between March 2004 and March 2006 in the average gross weekly charge occurred in North Lanarkshire (an increase of 17.3 per cent from £404 to £474). Argyll & Bute and Eilean Siar also showed an increase of over 15 per cent during the 2 years.

The lowest percentage increase occurred in Clackmannanshire which had an increase in the gross weekly charge of 4.3 per cent between March 2004 and March 2006.

Between March 2005 and March 2006 (and again excluding Shetland Islands) the largest percentage increase occurred in Orkney Islands (an 11.3 per cent increase from £595 to £662).

There is a large amount of variation in charges between local authorities. Charges may vary for a variety of reasons, for example, some homes offer nursing care to residents while others (former residential care homes) do not. Similarly charges may vary between privately funded and local authority funded residents or between rooms of different sizes or between rooms with ensuite facilities and those without. The gross weekly charge as it is presented in table 5 does not distinguish between these factors.

Average Weekly Charge for Different Residents

From March 2006 the Scottish Care Home Census asked care homes to supply a breakdown of the different charges applied to long stay residents in four different categories as follows:

- Local authority funded, without nursing care
- Local Authority funded and receiving nursing care
- Privately funded, without nursing care
- Privately funded and receiving nursing care

Table 6: Average weekly charge in independent care homes by source of funding and whether nursing care required

Source of funding	Without nursing care	With Nursing care	All
Local Authority	389	443	431
Private	434	564	527
All	404	476	459

Source: SCHC1 March 2006

Table 6 shows the average charges across Scotland for long stay residents in each category in independent care homes. Charges have been weighted to reflect the number of long stay residents in each category within each care home.

In independent sector care homes for older people the average weekly charge for a long stay resident receiving nursing care was £476 compared to £404 for a resident without nursing care. Charges for residents in both these categories varied depending on the main source of funding and, overall, the average charge for a local authority funded resident was £431 and, for a privately funded resident, was £527.

Annex E shows a local authority level analysis of these charges. The maximum and minimum average charges quoted below omit local authorities in which there were fewer than 4 homes, these charges have been withheld to maintain confidentiality.

Average charges for privately funded residents without nursing care ranged from £384 in Renfrewshire to £534 in East Renfrewshire, the Scottish average figure was £434. For privately funded residents receiving nursing care the Scottish average charge was £564. At local authority level charges ranged from £445 in Dumfries & Galloway to £721 in Edinburgh. Overall, for all residents without nursing care, irrespective of their source of funding, the average charge ranged from £350 in West Dunbartonshire to £488 in East Renfrewshire whilst the average charge for residents with nursing care ranged from £440 in Scottish Borders to £601 in Edinburgh.

Table 7: Number of Admissions, Discharges and Deaths in Homes for Older People

September 2005 – March 2006

	SECTOR									TOTAL		
	LA/NHS			Private			Voluntary					
	Long Stay	Short Stay	Total	Long Stay	Short Stay	Total	Long Stay	Short Stay	Total	Long Stay	Short Stay	Total
RESIDENTS IN CARE HOMES												
In on 30 September 2005	4,617	343	4,960	24,490	424	24,914	3,856	87	3,943	32,963	854	33,817
Admissions during 6 months	809	4,613	5,422	5,029	3,209	8,238	629	1,104	1,733	6,467	8,926	15,393
Discharges during 6 months	446	4,604	5,050	1,323	3,191	4,514	270	1,082	1,352	2,039	8,877	10,916
Deaths during 6 months	423	22	445	3,915	81	3,996	476	19	495	4,814	122	4,936
In on 31 March 2006	4,557	330	4,887	24,281	361	24,642	3,739	90	3,829	32,577	781	33,358

Source: SCHC1 March 2006

Admissions and Discharges.

In care homes run by local authorities or by the NHS there were a total of 5,422 admissions. These accounted for 35 per cent of all admissions (13 per cent of all long stay and 52 per cent of all short stay admissions). In the Local Authority/NHS sector, the majority of admissions (85 per cent) were for a short stay or respite care.

In the private sector there were a total of 8,238 admissions, 5,029 (61 per cent) of which were long stay and 3,209 (39 per cent) short stay or respite. In total these represented 54 per cent of all admissions and included 78 per cent of all long stay and 36 per cent of all short stay admissions.

Admissions in the voluntary sector accounted for the remaining 11 per cent of all admissions including 10 per cent of all long

stay and 12 per cent of all short stay admissions.

Between 30 September 2005 and 31 March 2006, 10,916 residents were discharged from care homes. Two thousand and thirty nine of these discharges were long stay residents and 8,877 were short stay residents. Discharges from local authority run homes accounted for 46 per cent of all discharges whilst a further 41 per cent of discharges were of residents in the private sector and 12 per cent were in the voluntary sector.

During the 6 months preceding the most recent census 4,936 care home residents died.

Of these the majority, 4,814 were long stay residents and 3,915 of these (81 per cent) were in the private sector.

Section Two: Long Stay Residents in Care Homes for Older People

Table 8: Gender and Age of Residents March 2003 – March 2006

Gender	Age	Mar-03	Sep-03	Mar-04	Sep-04	Mar-05	Sep-05	Mar-06
Male	Under 65	8%	8%	8%	8%	8%	9%	8%
	65-74	17%	14%	16%	16%	17%	17%	17%
	75-84	38%	38%	39%	40%	40%	38%	40%
	85+	37%	40%	37%	36%	35%	36%	36%
	Total	8,847	8,505	8,614	8,845	8,794	8,948	8,852
Female	Under 65	3%	3%	3%	3%	3%	4%	3%
	65-74	9%	9%	9%	9%	9%	9%	9%
	75-84	34%	35%	35%	36%	35%	35%	35%
	85+	54%	53%	53%	52%	53%	52%	53%
	Total	24,744	25,005	24,586	24,407	24,005	23,758	23,724
Total	Under 65	4%	4%	4%	4%	5%	5%	4%
	65-74	11%	10%	11%	11%	11%	11%	11%
	75-84	35%	35%	36%	37%	36%	36%	36%
	85+	50%	50%	49%	48%	48%	48%	49%
	Total	33,591	33,510	33,200	33,252	32,799	32,706	32,577

Source: SCHC1, March 2006

Of the 32,577 long stay residents in care homes for older people on 31 March 2006, 23,724 (almost three-quarters) were female and 8,852 were male. More than half of the female long stay residents were aged 85 or over and a further 35 per cent were aged between 75 and 84. Amongst male residents, 36 per cent were aged 85 and over and 40 per cent were aged 75-84. Since March 2003 the percentage of long stay residents aged 85 and over has fallen slightly amongst both male and female residents. There has been a corresponding increase in the percentage of residents aged 75-84.

Chart 2 shows where long stay residents were before being admitted to a care home. This covers all residents admitted in each census period between April 2002 and March 2006.

Between October 2005 and March 2006, 48 per cent of long stay residents were admitted from a hospital. A further 34 per cent were admitted from their own home. This distribution has remained fairly steady since the March 2003 census.

Chart 3 shows the destination of long stay residents who were discharged from care homes in each census period back to April 2002 – March 2003. Between October 2005 and March 2006, 71 per cent of discharges were due to deaths. Generally more deaths are reported in the March censuses which cover the winter period. A further 13 per cent exited to another care home..

Chart 4 shows the incomplete length of stay of residents in care homes on census nights. On 31 March 2006, 32 per cent of long stay residents had been there for between 1 and 3 years. Eighteen per cent had been in the care home for 5 years or more. There has been little variation in this distribution since March 2003 although the percentage staying in care homes for more than 3 years has risen steadily from 33 per cent in March 2003 to 38 per cent in March 2006.

Table 9: Characteristics of residents in care Homes for Older People, March 2006

Resident Characteristics	Under 65	65 - 74	75 - 84	85+	All ages	% of all residents
Requiring Nursing Care	1,158	2,374	8,099	10,144	21,775	67%
Visual Impairment	278	728	2,643	4,592	8,241	25%
Hearing Impairment	104	354	1,612	3,545	5,615	17%
Acquired Brain Injury	292	369	826	819	2,306	7%
Other Phys. Dis. or Chronic Illness	633	377	1,097	1,377	3,484	11%
Dementia (not medically diagnosed)	284	1,027	4,395	5,143	10,849	33%
Dementia (medically diagnosed)	77	342	1,424	2,417	4,260	13%
Mental Health Problems	317	668	1,624	1,514	4,123	13%
Learning Disability	253	269	360	245	1,127	3%
Alcohol Related Problems	273	474	627	370	1,744	5%
Drugs Related Problems	11	9	15	7	42	0%
None of these	17	196	800	1,384	2,397	7%
All Residents	1,384	3,505	11,851	15,837	32,577	100%

Source: SCHC1 March 2006

Table 9 shows the number of long stay residents with various characteristics. Residents may have more than one of these characteristics. In total, 67 per cent of older people in care homes required nursing care). A total of 15,109 long stay residents (46 per cent) had dementia (of these, 72% had their dementia medically diagnosed).

Chart 2: Location Resident Admitted From, April 2002 – March 2006

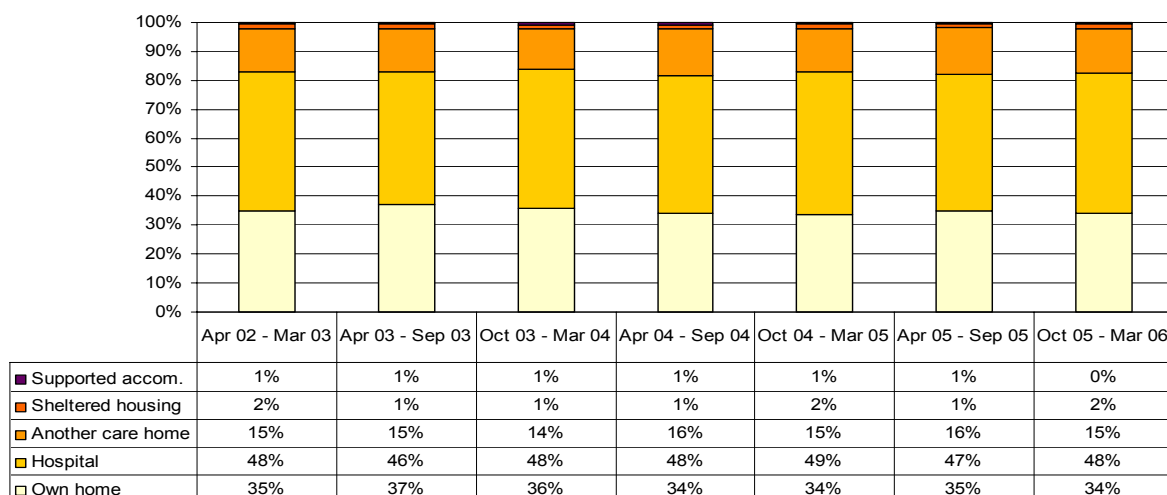


Chart 3: Destination on discharge, April 2002 – March 2006

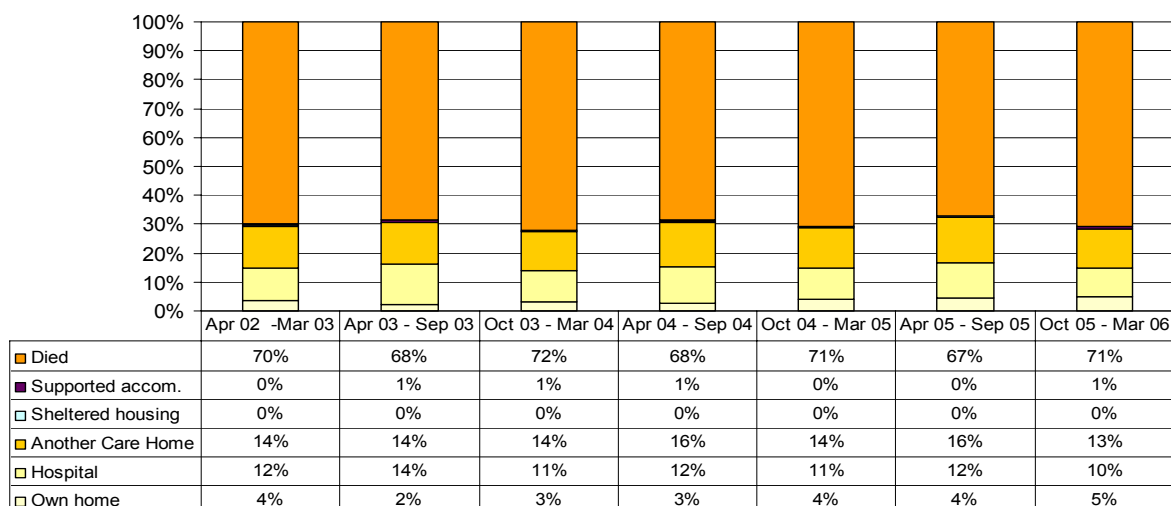
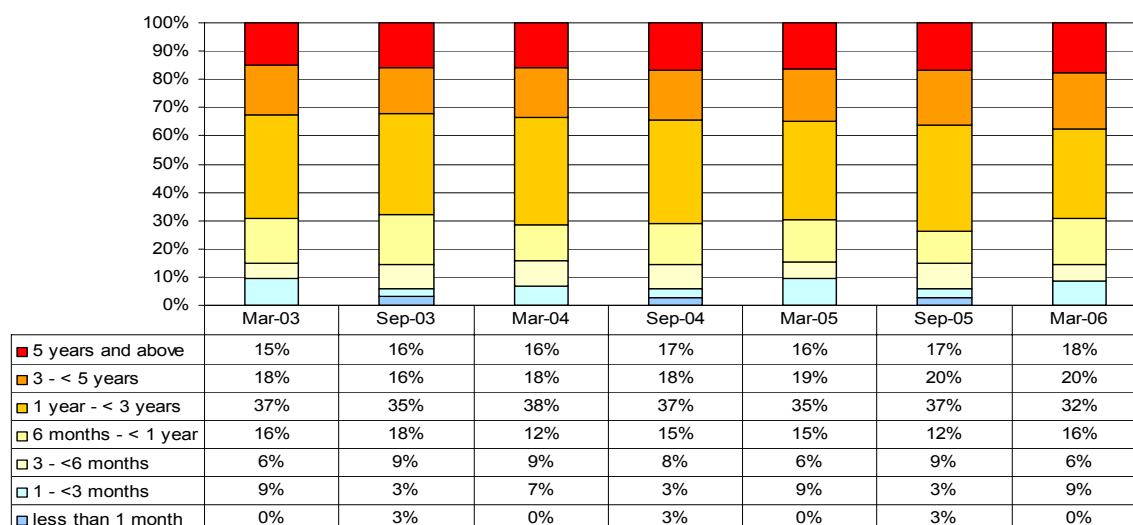


Chart 4: Average incomplete length of stay, March 2003 – March 2006



Section Three: Care Homes for Physically Disabled People

Table 10 – Care Homes, Places and Residents by Sector, March 2000 - March 2006

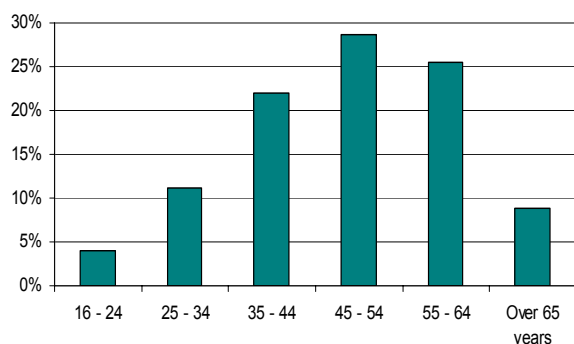
	Mar-00	Mar-01	Mar-02	Mar-03	Mar-04	Mar-05	Mar-06
Number of Care Homes	39	45	44	43	46	46	46
- Of which LA/NHS	2	2	2	2	3	3	3
- Of which Private	3	3	3	3	7	7	8
- Of which Voluntary	34	40	39	38	36	36	35
Number of Places	823	663	628	568	578	548	552
- Of which LA/NHS	27	27	27	26	27	27	27
- Of which Private	58	58	57	57	82	82	96
- Of which Voluntary	738	578	544	485	469	439	429
Number of Residents	723	572	551	478	484	488	493
- Of which LA/NHS	25	20	25	17	15	20	20
- Of which Private	50	50	56	51	66	67	74
- Of which Voluntary	648	502	470	410	403	401	399

Source: SCHC1 March 2006

On 31 March 2006 there were 46 care homes for physically disabled people providing 552 places and housing 493 residents.

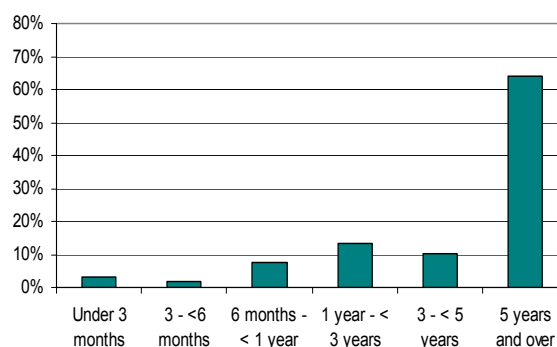
Since March 2000 the number of care homes has increased by 7 from 39. In the same period, the number of registered places has fallen from 823, a reduction of 271 places, and the number of residents has dropped from 723, down by 230. In March 2000, there were, on average, 21 places in a care home for people with physical disabilities. By March 2006 the average size had fallen to 12 places. Of the 46 care homes for physically disabled people, the majority, 35 (or 76 per cent) were operated by voluntary organisations. These voluntary homes offered 429 places to residents (78 per cent of all places). Of the remaining 11 care homes, 3 were operated by local authorities and 8 were in the private sector. The private sector has grown in size since March 2000 with an additional 5 care homes and 38 places by March 2006.

Chart 5: Age of residents, March 2006



Around 29 per cent of long stay residents in care homes for physically disabled people were aged between 45 and 54 (Chart 5).

Chart 6: Average incomplete length of stay, March 2006



Around 64 per cent of long stay residents in care homes for physically disabled people had been there for 5 years or more. Just over 12 per cent had been in the care home for less than 1 year (Chart 6).

Section Four: Care Homes for Adults with Mental Health Problems

Table 11 – Care Homes, Places and Residents by Sector, March 2000 - March 2006

	Mar-00	Mar-01	Mar-02	Mar-03	Mar-04	Mar-05	Mar-06
Number of Care Homes	129	120	108	105	105	105	101
- Of which LA/NHS	3	4	4	5	5	5	5
- Of which Private	20	21	19	18	19	18	17
- Of which Voluntary	106	95	85	82	81	82	79
Number of Places	1,225	1,294	1,261	1,209	1,224	1,231	1,203
- Of which LA/NHS	40	48	47	87	87	81	81
- Of which Private	358	389	379	321	341	346	338
- Of which Voluntary	827	857	835	801	796	804	784
Number of Residents	1,083	1,123	1,123	1,075	1,082	1,096	1,071
- Of which LA/NHS	35	35	38	74	68	69	73
- Of which Private	330	353	328	291	296	314	305
- Of which Voluntary	718	735	757	710	718	713	693

Source: SCHC1 March 2006

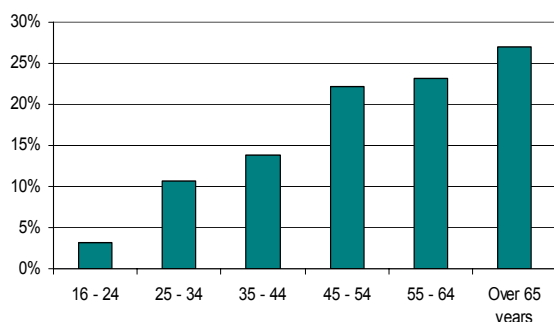
On the most recent census night there were 101 care homes in Scotland for adults with mental health problems. Of these 78 per cent (79 homes) were run by voluntary organisations. The 101 care homes offered a total of 1,203 places and were an average of 12 places in size.

The 79 care homes in the voluntary sector offered a total of 784 places and had an average of 10 places each. This compares to an average size of 20 places amongst the 17 privately owned care homes which offered a total of 338 places and housed 305 residents.

The 5 local authority run care homes offered a total of 81 places and had an average of 16 places.

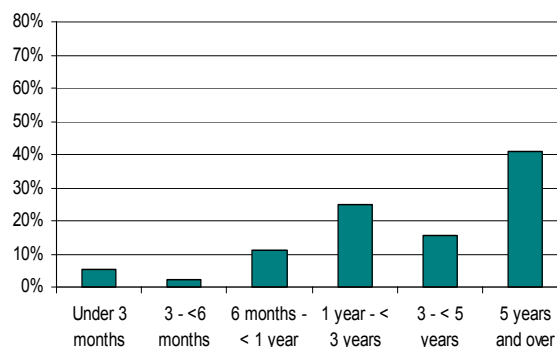
Since March 2000, the number of care homes offering services in this client group has dropped by 28, from 129. In the same period the number of places has decreased by only 22 and the number of residents by 12. The average size of a care home in March 2000 was 9 places.

Chart 7: Age of residents, March 2006



Over a quarter of long stay residents in care homes for adults with mental health problems were aged 65 and above and around half were aged 55 or over. Around 3 per cent of residents were aged between 16 and 24 (Chart 7).

Chart 8: Average incomplete length of stay, March 2006



Eighteen per cent of long stay residents in care homes for adults with mental health problems had been there for less than 1 year whilst 41 per cent had been resident in the care home for 5 years or more (Chart 8).

Section Five: Care Homes for Adults with Learning Disabilities

Table 12 – Care Homes, Places and Residents by Sector, March 2000 - March 2006

	Mar-00	Mar-01	Mar-02	Mar-03	Mar-04	Mar-05	Mar-06
Number of Care Homes	386	375	349	341	343	335	330
- Of which LA/NHS	64	59	56	55	54	49	45
- Of which Private	72	74	74	68	69	69	70
- Of which Voluntary	250	242	219	218	220	217	215
Number of Places	3,624	3,439	3,125	3,078	3,029	2,885	2,906
- Of which LA/NHS	700	655	599	570	561	472	459
- Of which Private	917	916	914	905	898	888	955
- Of which Voluntary	2,007	1,868	1,612	1,603	1,570	1,525	1,492
Number of Residents	3,321	3,162	2,872	2,690	2,610	2,573	2,499
- Of which LA/NHS	602	564	505	438	389	367	325
- Of which Private	851	852	867	818	818	831	832
- Of which Voluntary	1,868	1,746	1,500	1,434	1,403	1,375	1,342

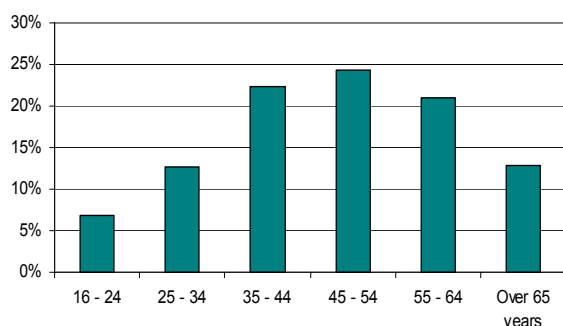
Source: SCHC1 March 2006

On 31 March 2006 there were 330 care homes for adults with learning disabilities. These homes offered a total of 2,906 places and had 2,499 residents.

Just over 65 per cent (215) of the care homes in this client group and 51 per cent (1,492) of the registered places were in the voluntary sector whilst 70 (21 per cent) were in the private sector and 45 (14 per cent) were run by local authorities. The average size of these care homes varied between sectors. Homes were, on average, 7 places in size the voluntary sector, 10 places in local authority homes and 14 places in privately operated care homes.

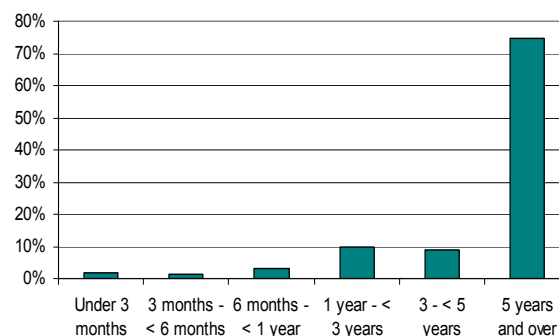
Since March 2000, the number of care homes has fallen by 56 from 386 in 2000 to the current level of 330 homes. There has been a corresponding drop in the number of places from 3,624 to 2,906. This is a reduction of 718 places (20 per cent). The number of residents in care homes for adults with learning disabilities has fallen by 822 from 3,321 in March 2000 to 2,499 in March 2006.

Chart 9: Age of residents, March 2006



Seven per cent of long stay residents in care homes for adults with learning disabilities were aged between 16 and 24 and 13 per cent were aged 65+ (Chart 9).

Chart 10: Average incomplete length of stay, March 2006



Three quarters of all long stay residents in care homes for adults with learning disabilities on 31 March 2006 had spent 5 years or more in that care home. Around 6 per cent had been in the care home for less than 1 year (Chart 10).

Further information on adults with learning disabilities and those who live in their own tenancies is available from:

<http://www.scotland.gov.uk/Publications/2006/05/22101802/0>

Section Six: Care Homes for Adults in Other Client Group

Table 13 – Care Homes, Places and Residents by Sector, March 2000 - March 2006

	Mar-00	Mar-01	Mar-02	Mar-03	Mar-04	Mar-05	Mar-06
Number of Care Homes	71	68	63	57	55	54	54
- Of which LA/NHS	4	5	4	3	3	3	4
- Of which Private	4	4	4	3	2	2	3
- Of which Voluntary	63	59	55	51	50	49	47
Number of Places	975	961	862	777	780	770	729
- Of which LA/NHS	68	71	68	42	42	42	43
- Of which Private	79	86	78	73	100	100	101
- Of which Voluntary	828	804	716	662	638	628	585
Number of Residents	784	784	662	583	620	603	589
- Of which LA/NHS	68	64	62	31	30	33	30
- Of which Private	75	78	76	60	94	82	100
- Of which Voluntary	641	642	524	492	496	488	459

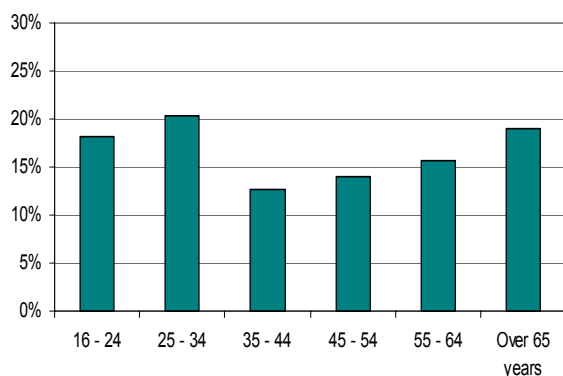
Source: SCHC1 March 2006

Care homes registered for other types of user can include homes for adults with acquired brain injuries, mothers and children, alcohol related problems, drugs related problems, AIDS/HIV and other vulnerable groups.

In March 2006 there were a total of 54 care homes for adults in other client groups. These homes offered a total of 729 places, an average of 13.5 places per home, and had 589 residents. The majority of the 54 homes (47 homes or 87 per cent of all homes) operated in the voluntary sector and these homes offered a total of 585 places. Of the remaining 8 care homes, 4 were run by local authorities and 3 were privately run. The local authority run homes offered a total of 43 places whilst the 3 private homes offered 101 places.

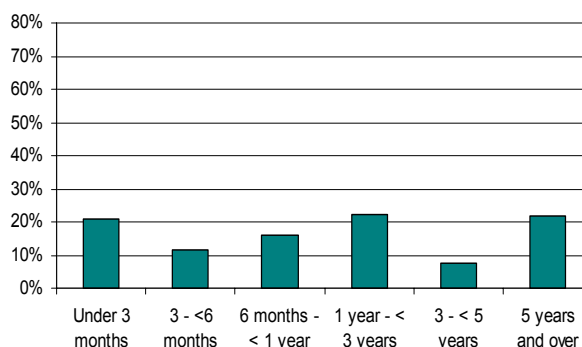
Since March 2000 the number of care homes in this client group has fallen by 17, from 71 to 54. This has coincided with a reduction of 246 places, from 975 to 729 and of 195 residents from 784 to 589.

Chart 11: Age of residents, March 2006



Around 18 per cent of long stay residents in care homes for adults in other client groups were aged between 16 and 24. A further 20 per cent were aged between 25 and 34 (Chart 11).

Chart 12: Average incomplete length of stay, March 2006



More than a fifth (21 per cent) of long stay residents in care homes for adults in other client groups had been there for less than 3 months. Roughly the same proportion had been in the care home for more than 5 years (Chart 12).

Background Information on the Census of Care Home Establishments

The Scottish Care Home census is intended to cover all adult care home establishments that are registered with the Care Commission. The Care Commission is responsible for regulating a wide range of social services and was established under the Regulation of Care (Scotland) Act 2001.

This census was first issued in March 2003 and replaced two previous surveys. It combined the former 'Residential Care Home Census – R1' (run by the Scottish Executive) and the 'Private Nursing Homes Census' (run by ISD Scotland). In March 2006 some of the data collection, relating mainly to care home places, was taken over by the Care Commission. It was intended that this would be made available to be included in this publication and the date of the publication was delayed as a result. Unfortunately, due to problems in the Care Commission's data collection this data has not yet been made available and, consequently, this publication excludes tables relating to places in single rooms, ensuite places and occupancy rates that have been published in infonotes for previous censuses. The information relating to registered places that *is* published in this release is largely taken from Scottish Care Home Census figures collected in September 2005. Where the Care Commission register shows the number of places in a care home to have changed since September 2005 this has been reflected in the published figures.

Figures showing the number and percentage of care home places in single rooms and the number and percentage of ensuite places in care homes are available from Audit Scotland. This data is shown as indicator 3 in the adult social work performance indicators at

<http://www.audit-scotland.gov.uk/performance/compendium/service/index.htm>

Care should be taken when interpreting this data. The local authority split shows places that are funded by each local authority as opposed to places located in each authority as is the case in this infonote.

The figures in this release relate to 31 March 2006. They are provisional and subject to change.

The number of open establishments covered by the March census was 1,491. Full or partial responses were received from 1,308 open care homes giving a response rate of approximately 88 per cent.

The figures in this statistics release have been grossed up to take account of non-response. The methodology adopted was based on carrying forward previous records available for the care home in question.

All figures in this release omit care homes that deregistered to become Housing Support services.

This release contains details of long stay residents in care homes. Forms are received for approximately 75 per cent of all long stay residents. The remaining 25 per cent are estimated using a series of computer programs. If resident details are missing from a particular home, the programs will identify 'similar' homes for which resident details are available and will estimate the details of the missing records based on these.

Further Information

Further details and analysis of both the establishment and resident data presented in this Statistics Release is available on request from the following address. The Statistics Release is also available on the Scottish Executive web site (www.scotland.gov.uk). This release was published on 27 March 2007

Community Care Statistics
Basement Rear
St Andrew's House
Edinburgh, EH1 3DG

Contact: Steven Gillespie
Tel: 0131 244 3777
E-mail: SWStat@scotland.gov.uk
27th March 2007

Annex A

Care Homes and Registered Places by Local Authority

All Care Homes for Adults

Local Authority	Older people		Physical Disabilities		Mental Health Problems		Learning Disabilities		Other		All client groups	
	Care Homes	Places	Care Homes	Places	Care Homes	Places	Care Homes	Places	Care Homes	Places	Care Homes	Places
Aberdeen City	35	1,553	4	50	16	134	34	230	11	125	100	2,092
Aberdeenshire	51	1,905	2	9	1	12	36	203	0	0	90	2,129
Angus	32	1,063	0	0	0	0	8	142	0	0	40	1,205
Argyll & Bute	28	734	0	0	0	0	4	24	3	45	35	803
Clackmannanshire	6	234	0	0	1	20	2	42	0	0	9	296
Dumfries & Galloway	37	1,186	0	0	4	79	8	60	1	9	50	1,334
Dundee City	24	957	1	12	1	2	8	168	0	0	34	1,139
East Ayrshire	24	854	1	10	1	25	5	66	0	0	31	955
East Dunbartonshire	10	532	1	22	1	5	2	8	0	0	14	567
East Lothian	19	712	1	20	0	0	6	32	0	0	26	764
East Renfrewshire	12	551	0	0	0	0	3	31	0	0	15	582
Edinburgh, City of	68	2,916	7	40	16	118	43	244	6	73	140	3,391
Eilean Siar	9	219	0	0	0	0	1	16	0	0	10	235
Falkirk	20	912	0	0	6	63	9	97	0	0	35	1,072
Fife	74	2,670	3	17	3	68	8	54	4	36	92	2,845
Glasgow City	88	4,526	4	60	24	289	15	133	16	217	147	5,225
Highland	70	1,956	2	31	8	126	15	179	4	62	99	2,354
Inverclyde	15	624	10	88	1	9	4	55	0	0	30	776
Midlothian	13	588	0	0	1	8	21	140	1	6	36	742
Moray	17	583	1	4	1	21	8	44	0	0	27	652
North Ayrshire	27	1,095	1	33	1	8	6	110	0	0	35	1,246
North Lanarkshire	40	2,100	0	0	2	18	12	143	1	98	55	2,359
Orkney Islands	8	136	1	1	0	0	3	8	0	0	12	145
Perth & Kinross	42	1,412	2	64	2	9	11	116	0	0	57	1,601
Renfrewshire	22	1,273	1	23	1	60	8	78	0	0	32	1,434
Scottish Borders	25	804	1	28	0	0	10	135	0	0	36	967
Shetland Islands	10	144	0	0	0	0	1	6	0	0	11	150
South Ayrshire	26	913	0	0	0	0	7	87	0	0	33	1,000
South Lanarkshire	56	2,831	1	16	2	46	9	92	5	44	73	3,029
Stirling	21	639	1	17	4	64	3	50	0	0	29	770
West Dunbartonshire	14	605	0	0	0	0	2	18	0	0	16	623
West Lothian	17	872	1	7	4	19	18	95	2	14	42	1,007
Scotland	960	38,099	46	552	101	1,203	330	2,906	54	729	1,491	43,489

Source: SCHC1 March 2006

Notes:

1. Care Homes and places – The number of care homes and places in care homes registered with the Care Commission. These figures are given for each client group and are split by Local Authority.

Annex B

Registered Places and Percentage Change by Local Authority Care Homes for Older People

Local Authority	Mar-00	Mar-01	Mar-02	Mar-03	Mar-04	Mar-05	Mar-06	% change in places during March 2000 - March 2006	% Change in places during year to March 2006
Aberdeen City	1,896	1,738	1,697	1,613	1,606	1,586	1,553	-18.1	-2.1
Aberdeenshire	2,017	1,977	1,991	2,017	1,975	1,966	1,905	-5.6	-3.1
Angus	1,022	1,025	1,026	1,018	1,057	1,029	1,063	4.0	3.3
Argyll & Bute	748	770	777	802	776	745	734	-1.9	-1.5
Clackmannanshire	203	205	234	234	234	234	234	15.3	0.0
Dumfries & Galloway	1,244	1,255	1,226	1,226	1,209	1,224	1,186	-4.7	-3.1
Dundee City	1,114	1,076	1,021	996	998	986	957	-14.1	-2.9
East Ayrshire	946	899	889	844	840	804	854	-9.7	6.2
East Dunbartonshire	515	618	597	601	601	527	532	3.3	0.9
East Lothian	762	735	724	696	690	701	712	-6.6	1.6
East Renfrewshire	540	564	556	554	554	554	551	2.0	-0.5
Edinburgh, City of	3,424	3,187	3,155	3,089	3,093	2,981	2,916	-14.8	-2.2
Eilean Siar	233	216	218	218	218	219	219	-6.0	0.0
Falkirk	1,003	973	944	946	927	935	912	-9.1	-2.5
Fife	2,307	2,437	2,457	2,479	2,458	2,594	2,670	15.7	2.9
Glasgow City	4,737	4,553	4,637	4,620	4,569	4,541	4,526	-4.5	-0.3
Highland	2,088	2,028	2,021	1,993	1,981	1,996	1,956	-6.3	-2.0
Inverclyde	664	590	583	595	580	608	624	-6.0	2.6
Midlothian	627	630	625	587	586	591	588	-6.2	-0.5
Moray	574	553	549	537	555	582	583	1.6	0.2
North Ayrshire	1,300	1,319	1,288	1,237	1,227	1,225	1,095	-15.8	-10.6
North Lanarkshire	1,710	1,693	1,708	1,788	1,830	1,960	2,100	22.8	7.1
Orkney Islands	100	102	98	104	100	100	136	36.0	36.0
Perth & Kinross	1,434	1,441	1,444	1,446	1,419	1,408	1,412	-1.5	0.3
Renfrewshire	1,198	1,165	1,157	1,167	1,208	1,270	1,273	6.3	0.2
Scottish Borders	875	848	840	854	826	835	804	-8.1	-3.7
Shetland Islands	135	132	142	142	142	143	144	6.7	0.7
South Ayrshire	1,049	1,009	900	901	966	938	913	-13.0	-2.7
South Lanarkshire	2,506	2,524	2,524	2,570	2,926	2,869	2,831	13.0	-1.3
Stirling	780	751	693	637	638	690	639	-18.1	-7.4
West Dunbartonshire	567	567	563	557	557	623	605	6.7	-2.9
West Lothian	886	845	844	856	897	852	872	-1.6	2.3
Scotland	39,204	38,425	38,128	37,924	38,243	38,316	38,099	-2.8	-0.6

Source: SCHC1 March 2006

Notes:

1. Registered Places – The number of places registered in care homes for older people. Figures are given by local authority for March 2000 – March 2006.
2. % Change 2000 – 2006 – The percentage change in the number of registered places in care homes for older people between March 2000 and March 2006. The change is given by individual local authority and for Scotland overall.
3. % Change during year to March 2006 – The percentage change in the number of registered places in care homes for older people between March 2005 and March 2006. The change is given by local authority and for Scotland overall.

Annex C

Registered places by Local Authority and Sector / places per 1,000 population aged 65+ Care Homes for Older People

Local Authority	LA/NHS	Private	Voluntary	All Sectors	Places per 1,000 pop'n aged 65+
Aberdeen City	224	1,134	195	1,553	48.2
Aberdeenshire	300	1,449	156	1,905	51.7
Angus	106	917	40	1,063	50.8
Argyll & Bute	112	519	103	734	40.2
Clackmannanshire	52	170	12	234	30.9
Dumfries & Galloway	0	914	272	1,186	38.2
Dundee City	153	714	90	957	37.6
East Ayrshire	57	797	0	854	42.6
East Dunbartonshire	0	499	33	532	28.6
East Lothian	158	495	59	712	43.2
East Renfrewshire	34	329	188	551	36.1
Edinburgh, City of	637	1,661	618	2,916	42.6
Eilean Siar	138	40	41	219	40.8
Falkirk	133	722	57	912	38.5
Fife	344	2,166	160	2,670	44.5
Glasgow City	849	3,243	434	4,526	54.0
Highland	339	1,453	164	1,956	51.4
Inverclyde	0	401	223	624	44.8
Midlothian	131	385	72	588	46.4
Moray	0	523	60	583	37.8
North Ayrshire	77	929	89	1,095	46.1
North Lanarkshire	283	1,805	12	2,100	44.5
Orkney Islands	114	22	0	136	37.6
Perth & Kinross	128	1,064	220	1,412	52.1
Renfrewshire	192	871	210	1,273	46.5
Scottish Borders	207	455	142	804	37.1
Shetland Islands	128	0	16	144	42.6
South Ayrshire	87	770	56	913	40.5
South Lanarkshire	277	2,093	461	2,831	57.2
Stirling	67	502	70	639	44.6
West Dunbartonshire	191	404	10	605	41.8
West Lothian	143	703	26	872	41.8
Scotland	5,661	28,149	4,289	38,099	45.4

Source: SCHC1 March 2006

Annex D

Care Home Closures and New Care Homes by Local Authority

Care Homes for Older People

Local Authority	Mar-00	New Care Homes	Home Closures	Mar-03	New Care Homes	Home Closures	Mar-04	New Care Homes	Home Closures	Mar-05	New Care Homes	Home Closures	Mar-06	Change since 2000
Aberdeen City	42	0	5	37	1	1	37	0	1	36	0	1	35	-7
Aberdeenshire	56	0	1	55	0	1	54	0	1	53	0	2	51	-5
Angus	34	2	5	31	1	0	32	0	1	31	1	0	32	-2
Argyll & Bute	34	0	4	30	0	1	29	1	2	28	0	0	28	-6
Clackmannanshire	5	1	0	6	0	0	6	0	0	6	0	0	6	1
Dumfries & Galloway	40	1	3	38	0	1	37	0	0	37	0	0	37	-3
Dundee City	31	0	5	26	1	2	25	0	0	25	0	1	24	-7
East Ayrshire	27	1	3	25	0	0	25	0	2	23	2	1	24	-3
East Dunbartonshire	10	2	1	11	0	0	11	0	1	10	0	0	10	0
East Lothian	21	0	3	18	1	1	18	1	0	19	0	0	19	-2
East Renfrewshire	13	1	1	13	0	0	13	0	0	13	0	1	12	-1
Edinburgh, City of	84	2	13	73	1	1	73	0	3	70	0	2	68	-16
Eilean Siar	10	0	1	9	0	0	9	0	0	9	0	0	9	-1
Falkirk	22	0	0	22	0	1	21	0	0	21	0	1	20	-2
Fife	70	4	2	72	0	1	71	3	0	74	0	0	74	4
Glasgow City	100	6	12	94	0	2	92	2	3	91	0	3	88	-12
Highland	75	2	4	73	0	0	73	1	3	71	1	2	70	-5
Inverclyde	18	1	3	16	1	3	14	1	0	15	0	0	15	-3
Midlothian	15	0	2	13	1	1	13	0	0	13	0	0	13	-2
Moray	18	0	2	16	0	0	16	1	0	17	1	1	17	-1
North Ayrshire	37	3	5	35	0	1	34	0	3	31	1	5	27	-10
North Lanarkshire	39	1	3	37	0	0	37	3	1	39	2	1	40	1
Orkney Islands	5	2	1	6	0	0	6	0	0	6	2	0	8	3
Perth & Kinross	46	0	1	45	0	2	43	0	1	42	0	0	42	-4
Renfrewshire	25	1	3	23	1	1	23	2	3	22	1	1	22	-3
Scottish Borders	28	0	1	27	0	0	27	0	0	27	0	2	25	-3
Shetland Islands	9	2	1	10	0	0	10	0	0	10	0	0	10	1
South Ayrshire	32	0	4	28	1	1	28	0	0	28	0	2	26	-6
South Lanarkshire	55	2	3	54	5	1	58	0	2	56	1	1	56	1
Stirling	25	0	3	22	0	0	22	1	0	23	0	2	21	-4
West Dunbartonshire	14	0	0	14	0	0	14	1	0	15	0	1	14	0
West Lothian	20	0	3	17	2	1	18	0	1	17	0	0	17	-3
Scotland	1,060	34	98	996	16	23	989	17	28	978	12	30	960	-100

Source: SCHC1 March 2006

Notes:

1. Number of Registered Care Homes by Local Authority – The number of care homes registered with the Care Commission within each local authority. Figures are given for March 2000, 2003, 2004, 2005 and 2006.
2. New – Care Homes that have newly registered with the Care Commission since the previous March census.
3. Home Closures – Care Homes that have closed and therefore cancelled their registration with the Care Commission since the previous March census.

Annex E

Average weekly charge for long stay residents in independently operated care homes, by main source of funding and whether nursing care required, March 2006 Care Homes for Older People

Local Authority	LA funded residents without nursing	LA funded residents with nursing	All LA funded residents	Private funded residents without nursing	Private funded residents with nursing	All private funded residents	All residents without nursing	All residents with nursing
Aberdeen City	374	439	430	455	644	609	402	494
Aberdeenshire	365	436	424	452	528	519	388	468
Angus	388	432	416	419	538	466	402	457
Argyll & Bute	380	422	399	457	499	477	398	442
Clackmannanshire	*	*	447	*	*	*	*	443
Dumfries & Galloway	369	446	395	416	445	425	379	446
Dundee City	375	429	419	410	539	486	390	451
East Ayrshire	361	437	420	404	459	441	373	441
East Dunbartonshire	392	450	439	527	588	570	469	511
East Lothian	375	443	431	416	550	531	389	486
East Renfrewshire	455	429	438	534	524	528	488	465
Edinburgh, City of	399	460	448	472	721	673	438	601
Eilean Siar	*	*	465	*	--	*	*	*
Falkirk	370	440	431	395	479	470	375	450
Fife	388	440	426	425	557	510	402	475
Glasgow City	422	443	438	394	532	492	417	457
Highland	393	446	428	435	527	489	408	470
Inverclyde	375	436	420	396	517	484	380	455
Midlothian	398	461	449	457	590	564	418	503
Moray	368	442	422	417	517	492	380	463
North Ayrshire	367	432	418	396	501	474	374	446
North Lanarkshire	373	478	470	407	502	491	380	481
Orkney Islands	*	*	*	*	*	*	*	*
Perth & Kinross	384	446	426	423	533	486	405	482
Renfrewshire	387	441	439	384	564	548	386	469
Scottish Borders	394	428	420	466	516	499	408	440
Shetland Islands	*	*	*	--	*	655	*	*
South Ayrshire	385	440	437	393	508	496	389	466
South Lanarkshire	403	438	432	438	485	471	416	449
Stirling	395	442	431	419	530	497	405	475
West Dunbartonshire	347	450	439	*	651	564	350	473
West Lothian	429	437	436	*	516	*	437	452
Scotland	389	443	431	434	564	527	404	476

Source: SCHC1 March 2006

* Where the average is based on 1, 2 or 3 homes in the independent sector, the figure has been suppressed to maintain care home confidentiality

-- This symbol indicates that there were no residents with this nursing care / funding combination in the Local Authority area

The breakdown of charging information into residents with / without nursing care and LA funded / private funded residents was collected for the first time in March 2006.

Annex F

Care Homes by Client Group: March 2000 – March 2006

(Excludes homes which de-registered between April 2002 and March 2006)

No. of Homes	Mar-00	Mar-01	Mar-02	Mar-03	Mar-04	Mar-05	Mar-06
Older people	1,060	1,038	1,019	996	989	978	960
Physical Disabilities	39	45	44	43	46	46	46
Mental Health Problems	129	120	108	105	105	105	101
Learning Disabilities	386	375	349	341	343	335	330
Other	71	68	63	57	55	54	54
Total	1,685	1,646	1,583	1,542	1,538	1,518	1,491

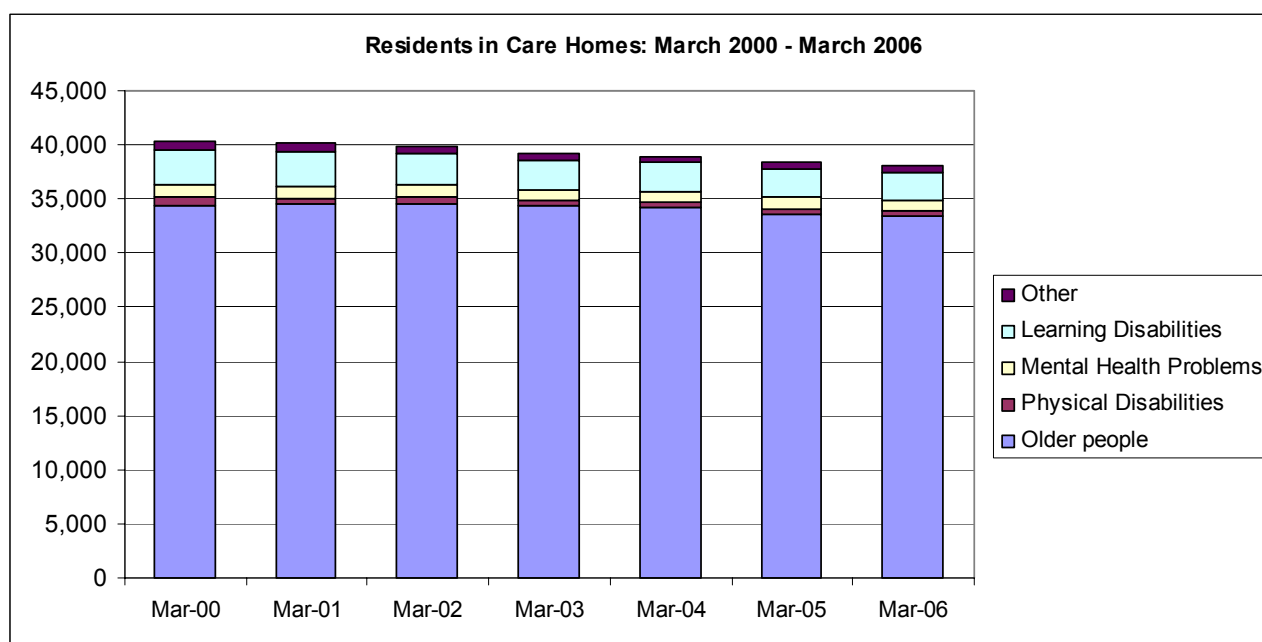
Source: SCHC1 March 2006

No. of Places	Mar-00	Mar-01	Mar-02	Mar-03	Mar-04	Mar-05	Mar-06
Older people	39,204	38,425	38,128	37,924	38,243	38,316	38,099
Physical Disabilities	823	663	628	568	578	548	552
Mental Health Problems	1,225	1,294	1,261	1,209	1,224	1,231	1,203
Learning Disabilities	3,624	3,439	3,125	3,078	3,029	2,885	2,906
Other	975	961	862	777	780	770	729
Total	45,851	44,782	44,004	43,556	43,854	43,750	43,489

Source: SCHC1 March 2006

No. of Residents	Mar-00	Mar-01	Mar-02	Mar-03	Mar-04	Mar-05	Mar-06
Older people	34,457	34,500	34,591	34,326	34,156	33,608	33,358
Physical Disabilities	723	572	551	478	484	488	493
Mental Health Problems	1,083	1,123	1,123	1,075	1,082	1,096	1,071
Learning Disabilities	3,321	3,162	2,872	2,690	2,610	2,573	2,499
Other	784	784	662	583	620	603	589
Total	40,368	40,141	39,799	39,152	38,952	38,368	38,010

Source: SCHC1 March 2006



ISBN 978 0 7559 6574 8 (web only publication)