



Statistics Publication Notice

Education Series

ISSN 1479-7569
ISBN 978-0-7559-6551-9

PLACING REQUESTS IN SCHOOLS IN SCOTLAND, 2005/06

20th March, 2007

A Scottish Executive National Statistics Publication

This document contains results of the latest annual survey of placing requests (requests by parents to local authorities that a child be placed in a specified school). The survey has changed this year to collect information according to the academic year in which the placement would occur, rather than the year in which the request was received. This does mean that in this transition year many of the reported requests will be those reported in last year's publication.

The main findings for 2005/06 are:

- The total number of placing requests **received** for 2005/06 was 30,240. The annual number of placing requests has changed little over the last decade (Table 1).
- Eighty four per cent of all requests were **granted**. There has been little change in this rate in recent years.
- Where requests were **refused**, "Accommodation constraints" was the reason reported in 32 per cent of cases in primary schools and 39 per cent of cases in secondary schools (Table 9).
- Sixty per cent of placing requests (18,254) were **primary** school requests, of which 89 per cent were granted. Placing requests received for stage P1 (excluding early entry) represented 22 per cent of the P1 pupil roll (Tables 2 and 7).
- Thirty-nine per cent of placing requests (11,845) were for **secondary**, of which 76 per cent were granted. Placing requests for stage S1 represented 14 per cent of the S1 pupil roll (Tables 2 and 7).
- **Special** schools accounted for half a per cent of requests (141), of which 80 per cent were granted (Table 2). Of these, 30 placing requests were for places in **grant aided or independent** special schools (Table 5). Forty per cent of these were granted.
- There were also 196 requests for **early entry** into primary school which, as they are not legally placing requests, are generally not included in this year's publication (except in Table 2 for information). There were however 23 early entry requests for alternative schools which are counted as primary school placing requests.

TABLES

- Table 1 Total placing requests made to primary, secondary and special schools (excluding pre-school and early entry requests), by outcome, 1996/97 to 2005/06
- Table 2 Placing requests received and percentage granted, by sector, 1990/91 to 2005/06
- Table 3 Placing requests by outcome, primary schools
- Table 4 Placing requests by outcome, secondary schools
- Table 5 Placing requests by outcome, special schools
- Table 6 Placing requests received and granted, by sector and local authority, 2005/06
- Table 7 Placing requests received as a percentage of the relevant stage roll, primary and secondary schools, 1st August 2005 to 31st July 2006
- Table 8 Placing requests refused, by reason for refusal primary, secondary and special schools, 1st August 2005 to 31st July 2006
- Table 9 Percentage of placing requests refused, by reason for refusal primary, secondary and special schools, 1st August 2005 to 31st July 2006
- Table 10 Percentage of placing requests refused, by reason for refusal, 1998/99 to 2005/06
- Table 11 Requests for deferred entry to P1, 2003/04 to 2005/06
- Table 12 Placing requests from pupils in other local authorities, 2005/06
- Table 13 The distance of all pupils to their second nearest (i.e. nearest alternative) non-denominational publicly funded school, 2005/06

CHARTS

- Chart 1 Placing requests received, 1996/97 to 2005/06
- Chart 2 Outcome of placing requests to primary, secondary and special schools, 2005/06

MAPS

- Map 1 Primary pupils' proximity to their second nearest (i.e. nearest alternative) non-denominational publicly funded school, 2005/06
- Map 2 Secondary pupils' proximity to their second nearest (i.e. nearest alternative) non-denominational publicly funded school, 2005/06

BACKGROUND NOTES

1. In this Statistics Publication Notice, a placing request is defined as a request that a child be placed in a specified school under the control of the local authority concerned. The figures also include requests that a child would not have to move to another school as a result of a change of residence. It excludes:
 - early entry requests, irrespective of whether the request is for the school the pupil would normally go to;
 - requests by parents of children who have been recorded as having special educational needs to have their child placed in a grant-aided or independent special school;
 - requests for a child to be placed in the school which he/she would, in any event, have attended;
 - requests for placements in nursery schools.
2. Unless they request the pupil to attend a school other than the one they would ordinarily attend, requests for early entry into P1 are not legally placing requests. For most tables in the publication we have included only those early entry to P1 requests that are also placing requests as part of the primary figures. We continue to provide annual figures for requests for under statutory entry age children alongside placing requests for primary, secondary and special sectors in table 2.
3. The usual arrangements for pupils entering P1 are that children whose 5th birthday falls between the start of March and the end of February start school together in the August in the middle of that period. For example, pupils whose 5th birthday is between the start of March 2005 and the end of February 2006 would generally start school in August 2005.
4. The systems operated by local authorities vary considerably. Some authorities operate a flexible policy whereby arrangements are made by the parent contacting the head teacher, without the involvement of the education authority.
5. From the commencement of the Additional Support for Learning Act in November 2005 parents of a child with additional support needs have the right to make a placing request for a child to attend an independent school or a grant-aided special school.
6. In most cases where placing requests are refused, cases will be referred to an education authority appeal committee and, in cases where the education authority uphold the refusal, referred to the Sheriff.
7. Cases where a child has a Co-ordinated Support Plan (or it has been determined either by the parents or the local authority that a child requires a Co-ordinated Support Plan, or the parents believe a Co-ordinated Support Plan should be in place) and the placing request is refused, the Additional Support Needs Tribunal will hear the appeal. Where the dispute is around whether a child should have a Co-ordinated Support Plan, and the Tribunal decides that a child does not require a plan, the appeal may then be returned to the education authority appeal committee.
8. In Table 7, the number of placing requests have been expressed as percentages of the relevant pupil populations as at September 2005.
9. Grounds in 2005/06 for refusing a placing request include:
 - a) where placing a child in a school would make it necessary to employ an additional teacher;
 - b) where it would give rise to significant expenditure on extending or altering accommodation;
 - c) where it is likely to be seriously detrimental to order and discipline in the school;
 - d) where it would be likely to be seriously detrimental to the educational well-being of the pupils already at the school;
 - e) where it would be seriously detrimental to the continuity of the child's education;

- f) if the education normally provided at the specified school would not be suited to the age, ability or aptitude of the child;
- g) if the education authority has already required the child to discontinue his/her attendance at the specified school;
- h) if, where the specified school is a special school, the child does not have additional support needs requiring the education or special facilities normally provided at that school;
- i) if the specified school is a single sex school and the child is not of the sex admitted to the school;
- j) where accepting the request would prevent the Council reserving a place at the school for a child likely to move into the catchment area of the school in-year;
- k) where accepting the request would make it necessary for the Council to create an additional class or employ an additional teacher at a future stage of the child's primary education;
- l) under the terms of section 38(1) of the Standards in Scotland's Schools etc. Act 2000, in the case of a child under school age, the education normally provided at the school would not be suited to the ability and aptitude of the child
- m) accepting the request would have the consequence that the capacity of the school would be exceeded in terms of pupil numbers
- n) the school is not a public school, the authority can make alternative provision for the child's additional support needs and it is not reasonable to place the child in the specified school given the suitability and cost of provision compared to the school the child would otherwise attend, at which the child has been offered a place.

Grounds (m) and (n) have been introduced for the first time in 2005/06.

- 10. Table 13 and Maps 1 and 2 are included for the first time this year. They have been produced using information from the September 2004 Pupil Census.
- 11. The full publication is available through the following link
<http://www.scotland.gov.uk/stats/bulletins/00570>
- 12. This report was edited by Carrie Graham, Mal Cooke and Colin Gallacher
- 13. This is a **National Statistics** publication. National Statistics are produced to high professional standards set out in the National Statistics Code of Practice. They undergo regular quality assurance reviews to ensure that they meet customer needs. They are produced free from any political interference.

Enquiries

- 12. Public enquiries (non-media) about the information contained in this News Release should be addressed to Carrie Graham, The Scottish Executive Education Department, Room 1B, Victoria Quay, Edinburgh EH6 6QQ.
Telephone 0131 244 0183
or email
school.stats@scotland.gsi.gov.uk
- 13. Media enquiries about the information in this statistical publication notice should be addressed to:
Nick Murton, tel. 0131 244-2087

Statistics Publication Notice
20th March, 2007

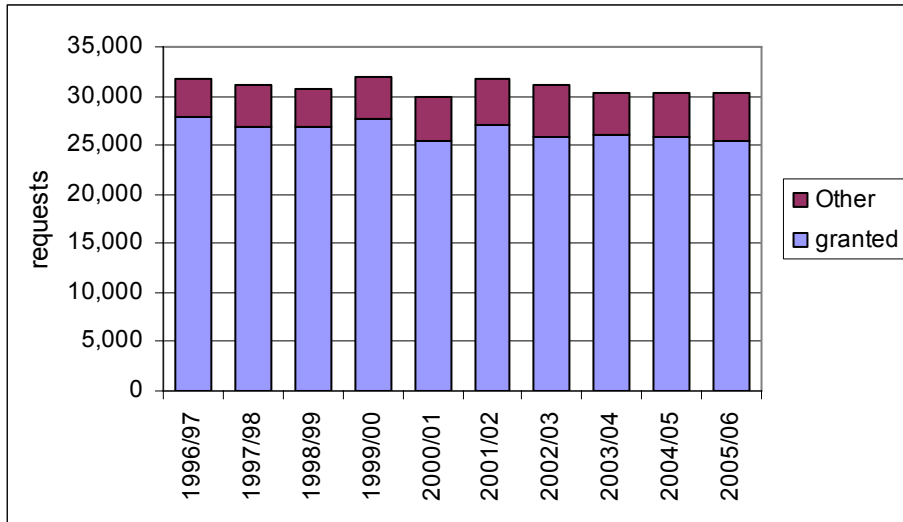
Table 1: Total Placing Requests made to primary, secondary and special schools (excluding pre-school and early entry requests), by outcome, 1996/97 to 2005/06 ⁽¹⁾

	1996/97	1997/98	1998/99	1999/00	2000/01	2001/02	2002/03	2003/04	2004/05	2005/06
Total requests received	31,663	31,100	30,681	31,932	30,008	31,685	31,224	30,309	30,317	30,240
Decisions made on placing requests at the initial stage										
Requests granted at initial stage	27,872	26,836	26,881	27,538	25,407	26,898	25,624	25,983	25,812	25,323
Requests refused at initial stage	2,641	2,809	2,408	2,873	3,017	3,023	3,752	2,886	2,947	3,174
Requests under consideration	233	305	284	236	282	207	276	220	200	171
Requests withdrawn prior to consideration	917	1,150	1,108	1,285	1,302	1,557	1,572	1,220	1,358	1,570
Passed to the Tribunal	n/a	n/a	n/a	n/a	n/a	n/a	n/a	n/a	n/a	2
Passed to the Appeal Committee										
Appeals granted	63	74	40	60	67	94	125	162	67	75
Appeals refused	434	425	352	522	542	527	612	314	280	388
Appeals under consideration	4	6	7	2	3	3	7	4	7	5
Appeals withdrawn prior to consideration	210	244	165	223	328	122	384	185	295	241
Passed to the Tribunal	n/a	n/a	n/a	n/a	n/a	n/a	n/a	n/a	n/a	1
Decisions made following appeal to Sheriff										
Appeals granted	2	3	-	-	1	8	2	1	1	1
Appeals refused	1	6	-	1	2	-	1	-	2	4
Appeals under consideration	7	1	6	4	9	1	9	1	4	-
Appeals withdrawn prior to consideration	16	12	5	17	16	16	24	2	6	5
Passed to the Tribunal	n/a	n/a	n/a	n/a	n/a	n/a	n/a	n/a	n/a	-
Decisions made by the Tribunal										
Appeals granted	n/a	n/a	n/a	n/a	n/a	n/a	n/a	n/a	n/a	2
Appeals refused	n/a	n/a	n/a	n/a	n/a	n/a	n/a	n/a	n/a	-
Appeals under consideration	n/a	n/a	n/a	n/a	n/a	n/a	n/a	n/a	n/a	-
Appeals withdrawn prior to consideration	n/a	n/a	n/a	n/a	n/a	n/a	n/a	n/a	n/a	-
Referred back to the Appeal Committee	n/a	n/a	n/a	n/a	n/a	n/a	n/a	n/a	n/a	-
Total granted ⁽²⁾										
Number	27,937	26,913	26,921	27,598	25,475	27,000	25,751	26,146	25,880	25,401
Percentage	88	87	88	86	85	85	82	86	85	84

(1) Year from 1 August to 31 July. Figures for previous years have been revised. See background note 3.

(2) Granted at initial stage, appeal committee or appeal to Sheriff or Tribunal

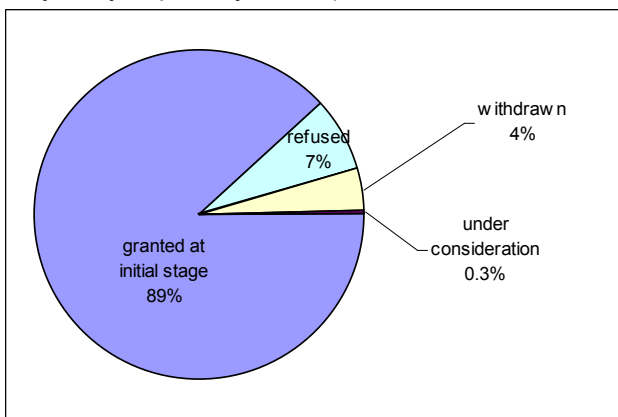
Chart 1: Placing requests received, 1996/97 to 2005/06⁽¹⁾



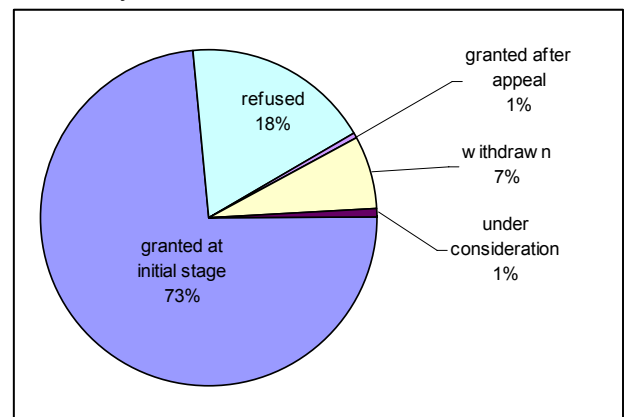
(1) Year from 1 August to 31 July. Including special schools and excluding pre-school and early entry. Granted means initially or at any later stage. See background note 3

Chart 2: Outcome of placing requests to primary, secondary and special schools, 2005/06

Primary (excluding under statutory age requests for early entry to primary school)



Secondary



Special (including grant-aided and independent special schools)

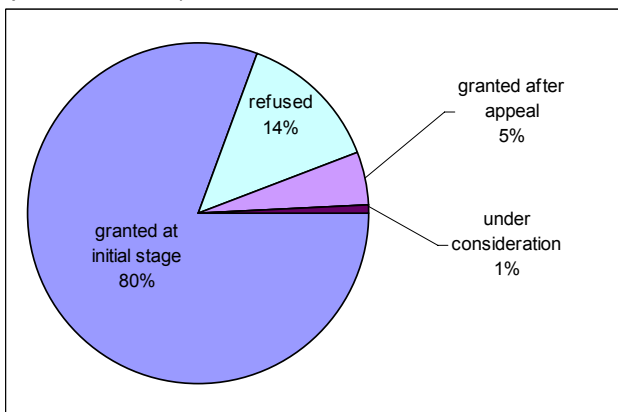


Table 2: Placing requests received and percentage granted, by sector, 1990/91 to 2005/06

Session ⁽¹⁾	Under statutory entry age primary ⁽²⁾		Primary		Secondary		Special ⁽⁴⁾	
	Received	Percentage granted ⁽³⁾	Received	Percentage granted ⁽³⁾	Received	Percentage granted ⁽³⁾	Received	Percentage granted ⁽³⁾
1990/91	998	37.4	15,541	95.0	8,867	87.5	n/a	n/a
1991/92	1,163	32.0	16,263	95.4	9,566	84.0	n/a	n/a
1992/93	1,064	36.2	17,565	94.1	10,534	83.8	n/a	n/a
1993/94	954	27.3	18,099	93.7	10,126	88.5	n/a	n/a
1994/95	855	26.3	19,780	91.9	10,274	83.6	24	100.0
1995/96	861	20.1	19,497	91.3	11,057	86.4	23	91.3
1996/97	617	33.7	20,695	92.0	10,956	81.2	12	50.0
1997/98	415	23.1	19,846	90.4	11,248	79.7	6	83.3
1998/99	327	21.7	19,459	91.3	11,155	81.6	67	92.5
1999/00	299	32.1	20,554	92.1	11,286	76.3	92	69.6
2000/01	218	29.4	18,919	90.7	10,959	74.9	130	73.1
2001/02	186	21.5	20,492	90.1	11,051	76.2	142	77.5
2002/03	176	23.9	19,440	89.4	11,692	71.1	92	67.4
2003/04	193	24.4	19,244	91.1	10,956	77.8	109	82.6
2004/05	197	21.3	18,670	91.1	11,507	76.2	140	75.0
2005/06	196	22.4	18,254	89.4	11,845	75.8	141	80.1

(1) Year from 1 August to 31 July.

(2) These are not technically placing requests, but are shown here for information. In 2004/05 ten of these were for schools other than the one the pupil would normally have entered. See background note 3

(3) Granted at initially or at any later stage

(4) Data for special schools not available before 1994/95. Includes grant aided and independent special schools from 2004/05 onwards.

**Table 3: Placing requests by outcome, primary schools,
1st August 2005 to 31st July 2006**

	Total	P1	P2-P7
Total Requests Received	18,254	11,587	6,667
Decisions at the initial stage			
Granted	16,275	10,183	6,092
Refused	1,182	847	335
Under consideration	56	12	44
Withdrawn	741	545	196
Passed to Tribunal	-	-	-
References to the appeal committee			
Received	296	263	33
Granted	37	30	7
Refused	136	119	17
Under consideration	1	-	1
Withdrawn	122	114	8
Passed to Tribunal	-	-	-
Appeals to Sheriff			
Received	6	4	2
Granted	-	-	-
Refused	3	3	-
Under consideration	-	-	-
Withdrawn	3	1	2
Passed to Tribunal	-	-	-
References to the Tribunal			
Received	-	-	-
Granted	-	-	-
Refused	-	-	-
Under consideration	-	-	-
Withdrawn	-	-	-
Referred back to Appeal Committee	-	-	-
Total granted ⁽¹⁾			
Number	16,312	10,213	6,099
Percentage	89.4	88.1	91.5

(1) Granted at initial stage, appeal committee or appeal to Sheriff or Tribunal

**Table 4: Placing requests by outcome, secondary schools,
1st August 2005 to 31st July 2006**

	Total	S1	S2-S6	
			under minimum leaving age	over minimum leaving age
Total Requests Received	11,845	8,139	3,135	571
Decisions at the initial stage				
Granted	8,941	6,292	2,194	455
Refused	1,963	1,307	621	35
Under consideration	114	47	52	15
Withdrawn	827	493	268	66
Passed to Tribunal	-	-	-	-
References to the appeal committee				
Received	396	329	54	13
Granted	34	29	5	-
Refused	242	201	28	13
Under consideration	3	2	1	-
Withdrawn	116	96	20	-
Passed to Tribunal	1	1	-	-
Appeals to Sheriff				
Received	4	4	-	-
Granted	1	1	-	-
Refused	1	1	-	-
Under consideration	-	-	-	-
Withdrawn	2	2	-	-
Passed to Tribunal	-	-	-	-
References to the Tribunal				
Received	-	-	-	-
Granted	-	-	-	-
Refused	-	-	-	-
Under consideration	-	-	-	-
Withdrawn	-	-	-	-
Referred back to Appeal Committee	-	-	-	-
Total granted ⁽¹⁾				
Number	8,976	6,322	2,199	455
Percentage	75.8	77.7	70.1	79.7

(1) Granted at initial stage, appeal committee or appeal to Sheriff or Tribunal

Table 5: Placing requests by outcome, special schools⁽¹⁾, 1st August 2005 to 31st July 2006

	Local Authority			
	Total	Under minimum leaving age	Over minimum leaving age	Grant-aided and Independent ⁽¹⁾
Total Requests Received	141	111	-	30
Decisions at the initial stage				
Granted	107	95	-	12
Refused	29	13	-	16
Under consideration	1	1	-	-
Withdrawn	2	-	-	2
Passed to Tribunal	2	2	-	-
References to the appeal committee				
Received	18	8	-	10
Granted	4	4	-	-
Refused	10	3	-	7
Under consideration	1	-	-	1
Withdrawn	3	1	-	2
Passed to Tribunal	-	-	-	-
Appeals to Sheriff				
Received	-	-	-	-
Granted	-	-	-	-
Refused	-	-	-	-
Under consideration	-	-	-	-
Withdrawn	-	-	-	-
Passed to Tribunal	-	-	-	-
References to the Tribunal				
Received	2	2	-	-
Granted	2	2	-	-
Refused	-	-	-	-
Under consideration	-	-	-	-
Withdrawn	-	-	-	-
Referred back to Appeal Committee	-	-	-	-
Total granted ⁽²⁾				
Number granted	113	101	-	12
Percentage	80.1	91.0	-	40.0

(1) Includes grant aided and independent special schools

(2) Granted at initial stage, appeal committee or appeal to Sheriff or Tribunal

Table 6: Placing Requests Received and Granted⁽¹⁾, by sector and local authority, 2005/06

	Primary ⁽²⁾		Secondary		Special ⁽³⁾	
	Received	Granted	Received	Granted	Received	Granted
Scotland	18,254	16,312	11,845	8,976	141	113
Aberdeen City	182	144	456	296	-	-
Aberdeenshire	651	615	287	261	1	1
Angus	733	664	299	276	-	-
Argyll & Bute	253	245	17	14	-	-
Clackmannanshire	228	213	45	44	-	-
Dumfries & Galloway	506	501	515	515	-	-
Dundee City	671	576	313	164	4	3
East Ayrshire	288	274	74	59	1	1
East Dunbartonshire	547	500	472	338	2	2
East Lothian	229	220	83	56	-	-
East Renfrewshire	686	490	606	242	-	-
Edinburgh, City of	2283	1758	1765	998	73	59
Eilean Siar	37	37	36	36	-	-
Falkirk	503	443	174	135	-	-
Fife	1026	989	1014	926	6	6
Glasgow City	2154	2010	1895	1450	17	14
Highland	585	553	229	217	-	-
Inverclyde	321	293	213	183	-	-
Midlothian	327	316	256	231	-	-
Moray	371	359	121	120	-	-
North Ayrshire	455	432	221	203	-	-
North Lanarkshire	962	875	473	420	-	-
Orkney Islands	11	11	-	-	-	-
Perth & Kinross	568	527	228	190	29	23
Renfrewshire	613	572	414	334	-	-
Scottish Borders	313	298	51	50	-	-
Shetland Islands	38	38	46	46	-	-
South Ayrshire	419	372	334	294	-	-
South Lanarkshire	1157	1068	500	319	2	-
Stirling	289	235	252	201	1	-
West Dunbartonshire	276	265	156	148	-	-
West Lothian	572	419	300	210	5	4

(1) Granted at initial stage, appeal committee or appeal to Sheriff or Tribunal

(2) Excludes requests for early entry to primary school (pupils under statutory entry age)

(3) Includes grant aided and independent special schools

Table 7: Placing requests received as a percentage of the relevant stage roll⁽¹⁾, primary and secondary schools, 1st August 2005 to 31st July 2006

	P1 requests as a % of P1 roll ⁽²⁾	P2-P7 requests as a % of P2-P7 roll	S1 requests as a % of S1 roll	S2-S6 requests as a % of S2-S6 roll
Scotland	22	2	14	1
Aberdeen City	7	-	19	1
Aberdeenshire	15	1	7	1
Angus	30	5	11	3
Argyll & Bute	17	2	1	-
Clackmannanshire	21	3	5	1
Dumfries & Galloway	18	2	15	3
Dundee City	31	3	14	1
East Ayrshire	15	1	3	-
East Dunbartonshire	35	2	27	1
East Lothian	14	1	5	1
East Renfrewshire	33	4	30	3
Edinburgh, City of	42	3	33	3
Eilean Siar	7	1	12	-
Falkirk	18	2	5	1
Fife	16	2	13	3
Glasgow City	27	2	23	3
Highland	14	2	5	1
Inverclyde	27	2	20	1
Midlothian	23	2	19	2
Moray	23	2	7	1
North Ayrshire	20	2	11	-
North Lanarkshire	18	1	8	1
Orkney Islands	4	-	-	-
Perth & Kinross	22	3	11	1
Renfrewshire	26	1	15	1
Scottish Borders	16	2	3	-
Shetland Islands	7	1	12	1
South Ayrshire	24	2	18	1
South Lanarkshire	26	2	9	1
Stirling	17	2	17	1
West Dunbartonshire	23	1	12	-
West Lothian	19	1	9	1

(1) Percentages are based on September 2005 stage rolls

(2) Excluding 'Under Statutory Entry Age' requests.

Table 8: Placing requests refused⁽¹⁾, by reason for refusal, primary, secondary and special schools, 1st August 2005 to 31st July 2006

	Total	Primary		Secondary		Special ⁽²⁾		
		P1	P2-P7	S1	S2-S6	Local Authority Under minimum leaving age	Over minimum leaving age	Grant-aided and Independent Special Schools
Total	3,174	847	335	1,307	656	13	-	16
Staffing constraints	1,077	250	83	482	254	8	-	-
Accommodation constraints	1,141	308	67	600	166	-	-	-
Effect on school discipline	42	1	9	2	30	-	-	-
Educational well-being of pupils already at the school	113	24	36	30	23	-	-	-
Continuity of the child's education	210	46	32	5	127	-	-	-
Age, ability or aptitude of the child	15	12	1	-	1	1	-	-
Child already required to discontinue at specified school	-	-	-	-	-	-	-	-
Specified school is a special school and the child does not have special educational needs	2	-	-	1	-	1	-	-
Specified school is a single sex school and the child is not of the sex admitted to the school	-	-	-	-	-	-	-	-
Place retained for children moving into the catchment area	378	113	45	168	52	-	-	-
Would require additional classes or teachers at a future stage of the child's primary education	128	88	33	4	3	-	-	-
Education normally provided would not be suited to ability and aptitude of child ⁽³⁾	-	-	-	-	-	-	-	-
Exceeds pupil capacity of the requested school	51	5	28	15	-	3	-	-
School not a public school, authority can make alternative provision for the child, suitability and cost of provision of the requested school insufficiently beneficial.	17	-	1	-	-	-	-	16

(1) Refused at initial stage. Includes some which were then granted on appeal

(2) Includes grant aided and independent special school

(3) Under Section 38(1) of the Standards in Scotland's Schools etc. Act 2000

Table 9: Percentage of placing requests refused⁽¹⁾, by reason for refusal, primary, secondary and special schools, 1st August 2005 to 31st July 2006

	Total	Primary		Secondary		Special ⁽²⁾		
		P1	P2-P7	S1	S2-S6	Local Authority Under minimum leaving age	Over minimum leaving age	Grant-aided and Independent Special Schools
Staffing constraints	33.9	29.5	24.8	36.9	38.7	61.5	-	-
Accommodation constraints	35.9	36.4	20.0	45.9	25.3	-	-	-
Effect on school discipline	1.3	0.1	2.7	0.2	4.6	-	-	-
Educational well-being of pupils already at the school	3.6	2.8	10.7	2.3	3.5	-	-	-
Continuity of the child's education	6.6	5.4	9.6	0.4	19.4	-	-	-
Age, ability or aptitude of the child	0.5	1.4	0.3	-	0.2	7.7	-	-
Child already required to discontinue at specified school	-	-	-	-	-	-	-	-
Specified school is a special school and the child does not have special educational needs	0.1	-	-	0.1	-	7.7	-	-
Specified school is a single sex school and the child is not of the sex admitted to the school	-	-	-	-	-	-	-	-
Place retained for children moving into the catchment area	11.9	13.3	13.4	12.9	7.9	-	-	-
Would require additional classes or teachers at a future stage of the child's primary education	4.0	10.4	9.9	0.3	0.5	-	-	-
Education normally provided would not be suited to ability and aptitude of child ⁽³⁾	-	-	-	-	-	-	-	-
Exceeds pupil capacity of the requested school	1.6	0.6	8.4	1.1	-	23.1	-	-
School not a public school, authority can make alternative provision for the child, suitability and cost of provision of the requested school insufficiently beneficial.	0.5	-	0.3	-	-	-	-	100.0

(1) Refused at initial stage. Includes some which were then granted on appeal

(2) Includes grant aided and independent special schools

(3) Under Section 38(1) of the Standards in Scotland's Schools etc. Act 2000

Table 10: Percentage of placing requests refused⁽¹⁾, by reason for refusal, 1998/99 to 2005/06

Reason for refusal	Percentage							
	98/99	99/00	00/01	01/02	02/03	03/04	04/05	05/06
Staffing constraints	14.9	12.2	9.0	15.9	21.3	18.0	26.2	33.9
Accommodation constraints	66.6	76.7	81.8	71.6	63.1	60.2	44.8	35.9
Effect on school discipline	1.0	1.1	0.3	0.7	0.5	1.5	2.2	1.3
Educational well-being of pupils already at the school	8.5	5.9	2.7	2.3	3.4	4.5	3.5	3.6
Continuity of the child's education	8.4	3.0	2.5	2.3	2.1	7.3	6.2	6.6
Age, ability or aptitude of the child	-	0.2	0.3	0.2	0.2	0.1	0.2	0.5
Child already required to discontinue at specified school	-	-	0.1	-	-	-	-	-
Specified school is a special school and the child does not have special educational needs	-	-	-	0.2	-	0.1	0.1	0.1
Specified school is a single sex school and the child is not of the sex admitted to the school	-	-	0.3	-	0.1	-	-	-
Place retained for children moving into the catchment area	0.5	0.7	2.9	5.3	7.5	7.5	13.5	11.9
Would require additional classes or teachers at a future stage of the child's primary education	n/a	n/a	0.1	1.6	1.7	0.7	3.3	4.0
Education normally provided would not be suited to ability and aptitude of child ⁽³⁾	n/a	n/a	-	-	0.2	-	-	-
Exceeds pupil capacity of the requested school	n/a	n/a	n/a	n/a	n/a	n/a	n/a	1.6
School not a public school, authority can make alternative provision for the child, suitability and cost of provision of the requested school insufficiently beneficial.	n/a	n/a	n/a	n/a	n/a	n/a	n/a	0.5

(1) Refused at initial stage. Includes some which were then granted on appeal

(2) Additional reasons included in survey from 2000/01 onwards

(3) Under Section 38(1) of the Standards in Scotland's Schools etc. Act 2000

Table 11: Requests for deferred entry to P1, 2003/04 to 2005/06

	2003/04 ⁽¹⁾		2004/05 ⁽²⁾		2005/06 ⁽³⁾	
	Primary	Special	Primary	Special	Primary	Special
Scotland	3,240	79	3,248	57	3,274	74
Aberdeen City	222	2	222	17	196	3
Aberdeenshire	420	15	444	3	395	18
Angus	108	8	171	-	163	-
Argyll & Bute	47	-	38	1	62	-
Clackmannanshire	23	15	35	-	35	-
Dumfries & Galloway	9	-	3	-	-	-
Dundee City	218	-	171	-	116	-
East Ayrshire	35	-	59	-	64	-
East Dunbartonshire	80	-	61	1	74	-
East Lothian	119	-	120	-	120	-
East Renfrewshire	62	3	74	1	69	-
Edinburgh, City of	464	-	486	-	486	-
Eilean Siar	28	-	-	-	-	-
Falkirk	65	-	55	-	57	-
Fife	151	1	128	2	150	-
Glasgow City	55	-	71	-	45	-
Highland	5	-	3	-	26	-
Inverclyde	37	-	51	-	48	-
Midlothian	77	-	83	-	83	-
Moray	9	-	-	-	75	-
North Ayrshire	42	-	44	-	50	-
North Lanarkshire	120	26	132	-	116	-
Orkney Islands	40	-	21	-	35	-
Perth & Kinross	191	-	139	-	159	1
Renfrewshire	97	-	92	-	112	-
Scottish Borders	86	-	83	11	89	-
Shetland Islands	-	-	-	-	-	-
South Ayrshire	44	-	37	-	48	-
South Lanarkshire	141	9	136	10	141	9
Stirling	59	-	56	-	43	22
West Dunbartonshire	19	-	64	-	70	-
West Lothian	167	-	169	11	147	21

(1) Where 5th birthday is between September 2003 and February 2004, pupil is wishing to defer to August 2006 and request is received 1st August 2003 to 31st July 2004.

(2) Where 5th birthday is between September 2004 and February 2005, pupil is wishing to defer to August 2006 and request is received 1st August 2004 to 31st July 2005.

(3) Where 5th birthday is between September 2005 and February 2006, pupil is wishing to defer to August 2006 and request is received 1st August 2005 to 31st July 2006.

Table 12: Placing requests from pupils in other local authorities, 2005/06 ⁽¹⁾

Pupils requesting to go to ⁽²⁾

Pupils requesting to move from Scotland	Aberdeen City	Aberdeenshire	Angus	Argyll & Bute	Clackmannanshire	Dumfries & Galloway	Dundee City
	28 (23)	95 (93)	195 (168)	15 (11)	21 (21)	1 (1)	99 (88)
Aberdeen City		74 (72)	-	-	-	-	3 (3)
Aberdeenshire	28 (23)		26 (25)	-	-	-	6 (6)
Angus	-	14 (14)		-	-	-	38 (32)
Argyll & Bute	-	-	-		-	-	-
Clackmannanshire	-	-	-	-		-	-
Dumfries & Galloway	-	-	-	-	2 (2)		-
Dundee City	-	-	130 (107)	-	-	-	
East Ayrshire	-	-	-	-	-	-	3 (3)
East Dunbartonshire	-	-	-	-	-	-	1 (1)
East Lothian	-	-	-	-	-	-	-
East Renfrewshire	-	-	-	-	-	-	-
Edinburgh City	-	-	-	-	-	-	4 (4)
Eilean Siar	-	-	-	-	-	-	-
Falkirk	-	-	-	-	2 (2)	-	-
Fife	-	-	1 (1)	-	1 (1)	-	19 (17)
Glasgow City	-	-	-	2 (-)	2 (2)	-	6 (4)
Highland	-	-	-	1 (1)	2 (2)	-	3 (3)
Inverclyde	-	-	-	1 (-)	-	-	-
Midlothian	-	-	-	-	1 (1)	-	3 (3)
Moray	-	7 (7)	2 (2)	-	-	-	-
North Ayrshire	-	-	-	-	-	-	-
North Lanarkshire	-	-	-	-	-	-	-
Orkney Islands	-	-	-	-	-	-	-
Perth & Kinross	-	-	36 (33)	-	2 (2)	-	12 (11)
Renfrewshire	-	-	-	-	-	-	-
Scottish Borders	-	-	-	-	-	-	1 (1)
Shetland Islands	-	-	-	-	-	-	-
South Ayrshire	-	-	-	-	-	1 (1)	-
South Lanarkshire	-	-	-	-	-	-	-
Stirling	-	-	-	-	7 (7)	-	-
West Dunbartonshire	-	-	-	11 (10)	-	-	-
West Lothian	-	-	-	-	2 (2)	-	-

(1) No pupils from Eilean Siar, Highland, Moray, Orkney or Shetland Islands made placing requests to attend schools outside their local authority in 2005/06

(2) Data shows the number of requests received and, in brackets, number of requests granted

Table 12 (cont.): Placing requests from pupils in other local authorities, 2005/06

Pupils requesting to move from	Pupils requesting to go to ⁽¹⁾						
	East Ayrshire	East Dunbartonshire	East Lothian	East Renfrewshire	Edinburgh City	Falkirk	Fife
Scotland	3 (3)	516 (404)	10 (5)	750 (392)	2 (1)	1 (1)	12 (12)
Aberdeen City	-	-	-	-	-	-	-
Aberdeenshire	-	-	-	-	-	-	-
Angus	-	-	-	-	-	-	-
Argyll & Bute	-	2 (2)	-	2 (1)	-	-	-
Clackmannanshire	-	3 (3)	-	1 (1)	-	-	-
Dumfries & Galloway	-	-	1 (-)	-	-	-	-
Dundee City	-	-	-	-	-	-	1 (1)
East Ayrshire	-	-	-	14 (10)	-	-	-
East Dunbartonshire	-	-	-	1 (1)	-	-	-
East Lothian	-	-	-	4 (2)	2 (1)	-	1 (1)
East Renfrewshire	-	10 (10)	-	-	-	-	-
Edinburgh City	-	2 (2)	2 (1)	-	-	-	2 (2)
Eilean Siar	-	-	-	-	-	-	-
Falkirk	-	-	-	2 (-)	-	-	1 (1)
Fife	-	-	-	4 (2)	-	-	-
Glasgow City	-	377 (280)	-	600 (320)	-	-	-
Highland	-	-	-	1 (1)	-	-	-
Inverclyde	-	-	-	-	-	-	-
Midlothian	-	-	-	-	-	-	2 (2)
Moray	-	-	-	-	-	-	-
North Ayrshire	3 (3)	1 (1)	-	1 (1)	-	-	-
North Lanarkshire	-	73 (66)	-	3 (2)	-	-	-
Orkney Islands	-	-	-	-	-	-	-
Perth & Kinross	-	-	-	3 (1)	-	-	2 (2)
Renfrewshire	-	2 (2)	-	15 (7)	-	-	-
Scottish Borders	-	-	7 (4)	-	-	-	-
Shetland Islands	-	-	-	-	-	-	-
South Ayrshire	-	-	-	2 (2)	-	-	-
South Lanarkshire	-	2 (2)	-	96 (40)	-	-	-
Stirling	-	6 (6)	-	-	-	1 (1)	-
West Dunbartonshire	-	38 (30)	-	-	-	-	-
West Lothian	-	-	-	1 (1)	-	-	3 (3)

(1) Data shows the number of requests received and, in brackets, number of requests granted

Table 12 (cont.): Placing requests from pupils in other local authorities, 2005/06

Pupils requesting to move from Scotland	Pupils requesting to go to ⁽¹⁾						
	Glasgow City	Inverclyde	Midlothian	North Ayrshire	North Lanarkshire	Perth & Kinross	Renfrewshire
	138 (126)	14 (13)	62 (62)	16 (16)	93 (88)	90 (90)	221 (178)
Aberdeen City	-	-	-	-	-	1 (1)	1 (1)
Aberdeenshire	-	-	-	-	-	1 (1)	-
Angus	-	-	-	-	-	2 (2)	1 (1)
Argyll & Bute	-	5 (4)	-	-	-	2 (2)	-
Clackmannanshire	-	-	-	-	-	14 (14)	-
Dumfries & Galloway	-	-	-	-	-	1 (1)	-
Dundee City	-	-	-	-	-	19 (19)	-
East Ayrshire	5 (5)	-	-	8 (8)	-	-	-
East Dunbartonshire	12 (10)	-	-	-	6 (6)	2 (2)	-
East Lothian	-	-	11 (11)	-	-	1 (1)	-
East Renfrewshire	19 (17)	-	-	-	-	-	4 (2)
Edinburgh City	-	-	41 (41)	-	1 (1)	1 (1)	-
Eilean Siar	-	-	-	-	-	-	-
Falkirk	-	-	-	-	11 (11)	1 (1)	-
Fife	-	-	2 (2)	-	-	41 (41)	1 (1)
Glasgow City	-	-	2 (2)	1 (1)	48 (46)	-	172 (141)
Highland	-	-	-	-	-	-	2 (-)
Inverclyde	-	-	-	3 (3)	-	-	17 (12)
Midlothian	-	-	-	-	-	-	-
Moray	-	-	-	-	-	-	1 (-)
North Ayrshire	1 (1)	3 (3)	-	-	-	-	16 (14)
North Lanarkshire	6 (4)	-	-	-	-	-	2 (2)
Orkney Islands	-	-	-	-	-	-	-
Perth & Kinross	-	-	-	-	-	-	-
Renfrewshire	18 (18)	6 (6)	-	2 (2)	-	-	-
Scottish Borders	-	-	5 (5)	-	-	-	1 (1)
Shetland Islands	-	-	-	-	-	-	-
South Ayrshire	1 (-)	-	-	2 (2)	-	-	2 (2)
South Lanarkshire	51 (50)	-	1 (1)	-	24 (21)	-	1 (1)
Stirling	1 (1)	-	-	-	1 (1)	4 (4)	-
West Dunbartonshire	24 (20)	-	-	-	2 (2)	-	-
West Lothian	-	-	-	-	-	-	-

(1) Data shows the number of requests received and, in brackets, number of requests granted

Table 12 (cont.): Placing requests from pupils in other local authorities, 2005/06Pupils requesting to go to⁽¹⁾

Pupils requesting to move from Scotland	Scottish Borders	South Ayrshire	South Lanarkshire	Stirling	West Dunbartonshire	West Lothian
	8 (8)	69 (61)	241 (210)	140 (127)	55 (48)	30 (21)
Aberdeen City	-	-	4 (4)	-	-	-
Aberdeenshire	-	-	-	-	-	-
Angus	-	-	-	-	-	-
Argyll & Bute	-	-	-	-	1 (1)	-
Clackmannanshire	-	-	-	37 (34)	-	-
Dumfries & Galloway	-	-	-	1 (1)	-	-
Dundee City	-	-	-	-	-	-
East Ayrshire	-	49 (44)	3 (3)	-	-	-
East Dunbartonshire	-	-	3 (3)	5 (5)	4 (4)	-
East Lothian	-	-	-	-	-	-
East Renfrewshire	-	-	2 (2)	-	-	-
Edinburgh City	-	-	2 (1)	-	-	4 (3)
Eilean Siar	-	-	-	-	-	-
Falkirk	-	-	1 (1)	23 (18)	-	17 (9)
Fife	-	-	5 (5)	-	-	-
Glasgow City	-	-	138 (117)	3 (3)	50 (43)	-
Highland	-	-	2 (2)	-	-	-
Inverclyde	-	-	-	-	-	-
Midlothian	8 (8)	-	-	-	-	-
Moray	-	-	-	-	-	-
North Ayrshire	-	20 (17)	10 (10)	-	-	-
North Lanarkshire	-	-	66 (57)	3 (2)	-	6 (6)
Orkney Islands	-	-	-	-	-	-
Perth & Kinross	-	-	-	24 (21)	-	-
Renfrewshire	-	-	-	-	-	-
Scottish Borders	-	-	-	-	-	-
Shetland Islands	-	-	-	-	-	-
South Ayrshire	-	-	-	-	-	-
South Lanarkshire	-	-	-	-	-	3 (3)
Stirling	-	-	1 (1)	-	-	-
West Dunbartonshire	-	-	-	44 (43)	-	-
West Lothian	-	-	4 (4)	-	-	-

(1) Data shows the number of requests received and, in brackets, number of requests granted

Table 13: The distance of all pupils to their second nearest (i.e. nearest alternative) non-denominational publicly funded school, 2005/06⁽¹⁾

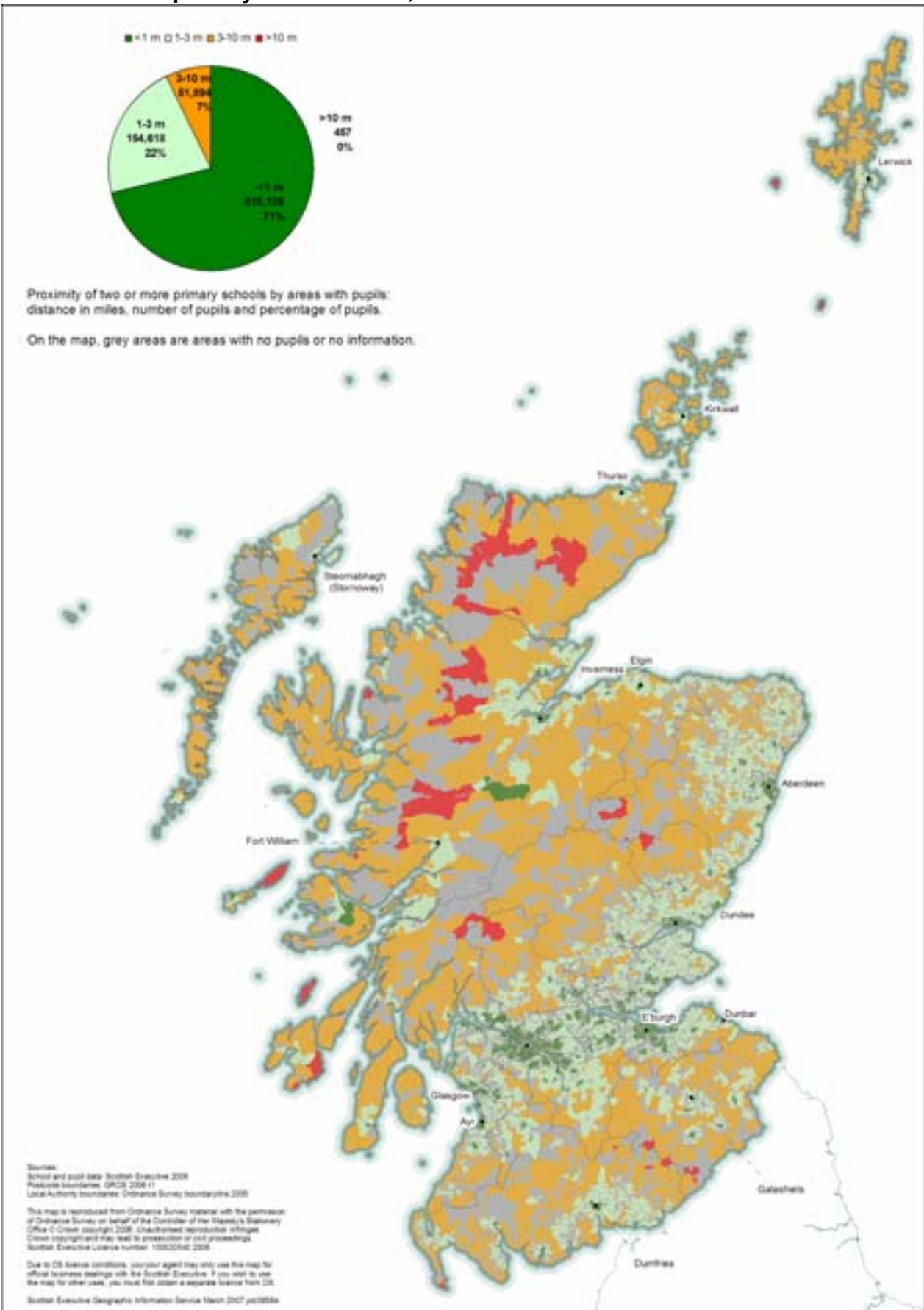
Local authority	Distance from alternative school (miles)							
	Primary schools				Secondary schools			
	<1 mile	1-3 miles	3-10 miles	>10 miles	<3 miles	3-5 miles	5-10 miles	>10 miles
Aberdeen City	20,168	3,532	-	-	22,599	1,091	10	22,674
Aberdeenshire	13,334	15,557	7,770	4	111	5,563	8,317	-
Angus	11,540	3,446	1,067	5	555	1,783	3,516	10,204
Argyll & Bute	3,842	5,786	3,067	87	134	3,875	1,691	7,082
Clackmannanshire	5,517	2,084	-	-	-	-	2,164	5,437
Dumfries & Galloway	8,477	7,771	4,982	26	19	62	538	20,637
Dundee City	18,410	343	-	-	18,600	110	43	-
East Ayrshire	8,698	8,780	947	-	-	-	3,125	15,300
East Dunbartonshire	13,769	2,362	9	-	12,157	3,699	284	-
East Lothian	7,247	5,838	662	-	7,230	1,029	2,555	2,933
East Renfrewshire	9,758	4,231	74	-	11,638	1,969	456	-
Edinburgh, City of	43,136	3,039	3	-	43,355	2,820	3	-
Eilean Siar	694	1,373	1,896	2	20	51	1,929	1,965
Falkirk	17,199	4,604	-	2	2,336	7,661	10,930	878
Fife	33,908	17,072	231	-	808	924	31,451	18,028
Glasgow City	74,262	476	-	-	74,465	273	-	-
Highland	14,744	7,530	9,887	219	6,152	1,606	4,206	20,416
Inverclyde	8,674	3,413	2	-	8,545	2,555	989	-
Midlothian	10,694	1,481	54	-	10,948	1,194	87	-
Moray	6,834	3,720	2,690	-	-	46	3,186	10,012
North Ayrshire	15,717	3,489	1,698	-	-	-	3,331	17,573
North Lanarkshire	42,310	8,419	46	-	28,427	12,945	9,403	-
Orkney Islands	920	605	1,557	6	-	-	324	2,764
Perth & Kinross	7,313	7,581	3,339	-	-	23	2,769	15,441
Renfrewshire	21,092	4,019	148	-	22,043	2,605	611	-
Scottish Borders	6,879	4,331	4,481	26	-	1	3,052	12,664
Shetland Islands	757	756	2,103	34	-	8	361	3,281
South Ayrshire	10,526	2,845	2,064	-	-	-	544	14,891
South Lanarkshire	36,550	7,436	822	-	16,972	15,429	8,527	3,880
Stirling	4,526	5,466	2,280	46	-	18	7,519	4,781
West Dunbartonshire	12,763	1,041	8	-	6,959	1,337	5,516	-
West Lothian	19,877	6,192	7	-	15,829	4,811	5,436	-

(1) Note that pupil numbers in both the primary and secondary sections of the table include all pupils, not just those in the respective sector.

Source: Pupils in Scotland 2004

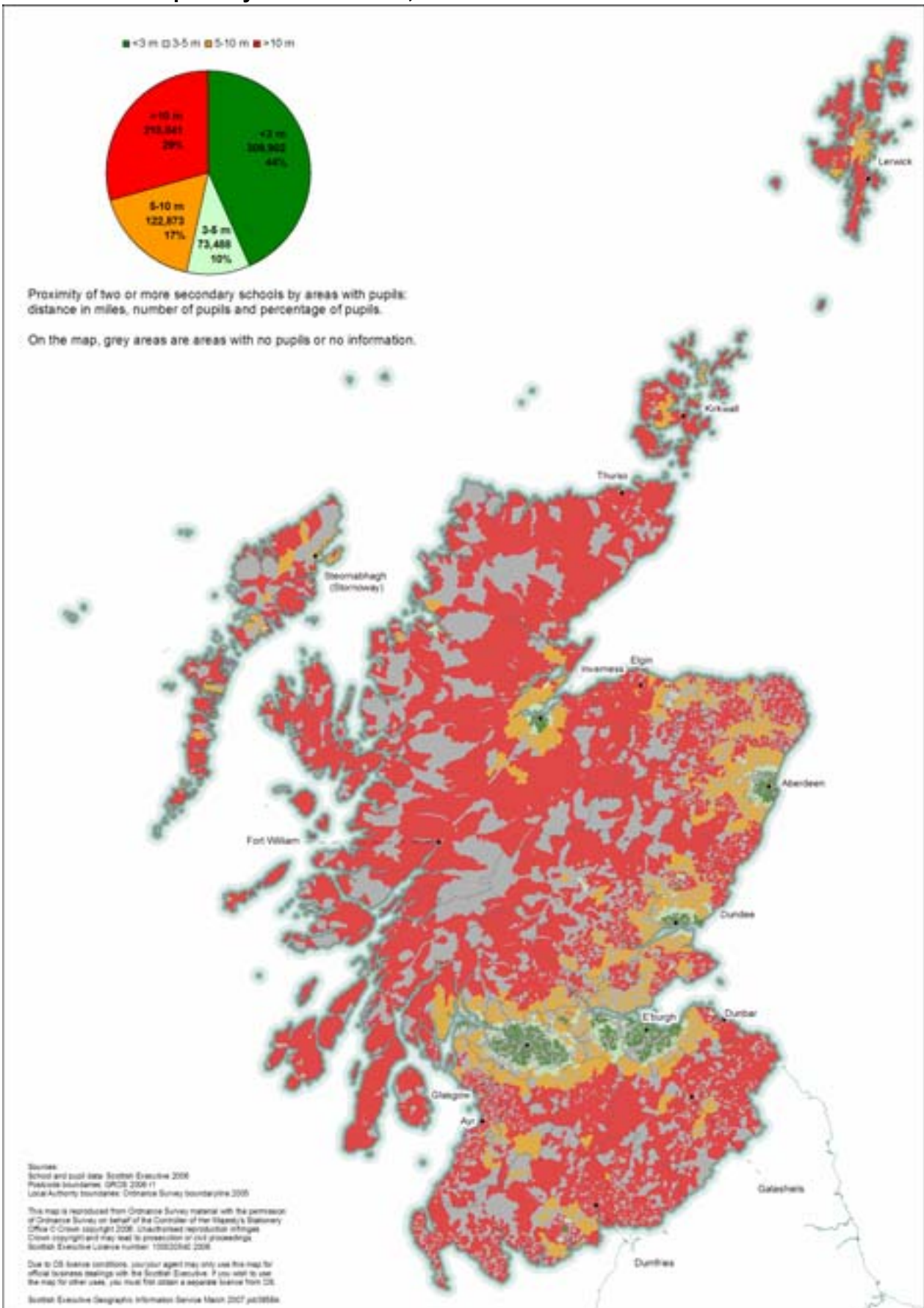
See background note 10

Map 1: Primary pupils' proximity to their second nearest (i.e. nearest alternative) non-denominational publicly funded school, 2005/06



Source: Pupils in Scotland 2005
 See background note 10

Map 2: Secondary pupils' proximity to their second nearest (i.e. nearest alternative) non-denominational publicly funded school, 2005/06



Source: Pupils in Scotland 2005
See background note 10